

1991

Industrial Resources: Carroll County - Carrollton

Kentucky Library Research Collections
Western Kentucky University, spcol@wku.edu

Follow this and additional works at: https://digitalcommons.wku.edu/carroll_cty

 Part of the [Business Administration, Management, and Operations Commons](#), [Growth and Development Commons](#), and the [Infrastructure Commons](#)

Recommended Citation

Kentucky Library Research Collections, "Industrial Resources: Carroll County - Carrollton" (1991). *Carroll County*. Paper 4.
https://digitalcommons.wku.edu/carroll_cty/4

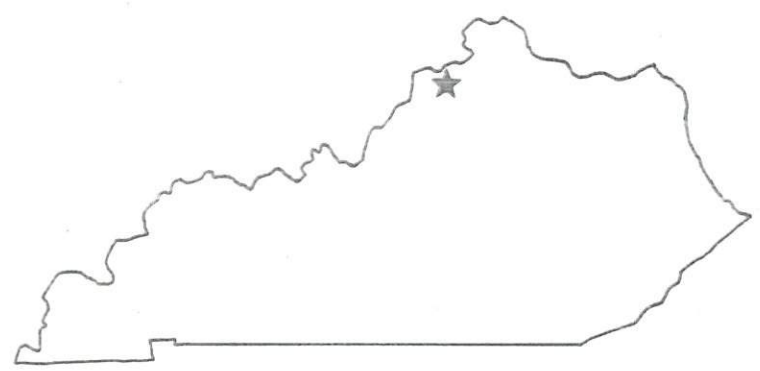
This Report is brought to you for free and open access by TopSCHOLAR®. It has been accepted for inclusion in Carroll County by an authorized administrator of TopSCHOLAR®. For more information, please contact topscholar@wku.edu.

716

Carroll Co

Resources for Economic Development

Carrollton



KENTUCKY
Open for Business

RESOURCES FOR ECONOMIC DEVELOPMENT
CARROLLTON, KENTUCKY

Prepared by
The Kentucky Cabinet for Economic Development
Division of Research and Planning
in cooperation with
Carroll County Community Development Corporation

1991

Division Director - Pamela K. Riley; program manager - Keith Roberts; research - Barry K. Holder, Jr.; clerical - Wanda Sharp; graphics - Robert Owens, Pat Coleman; cartography - Edwin Scott, Dave Clark. Cost of printing paid from state funds.

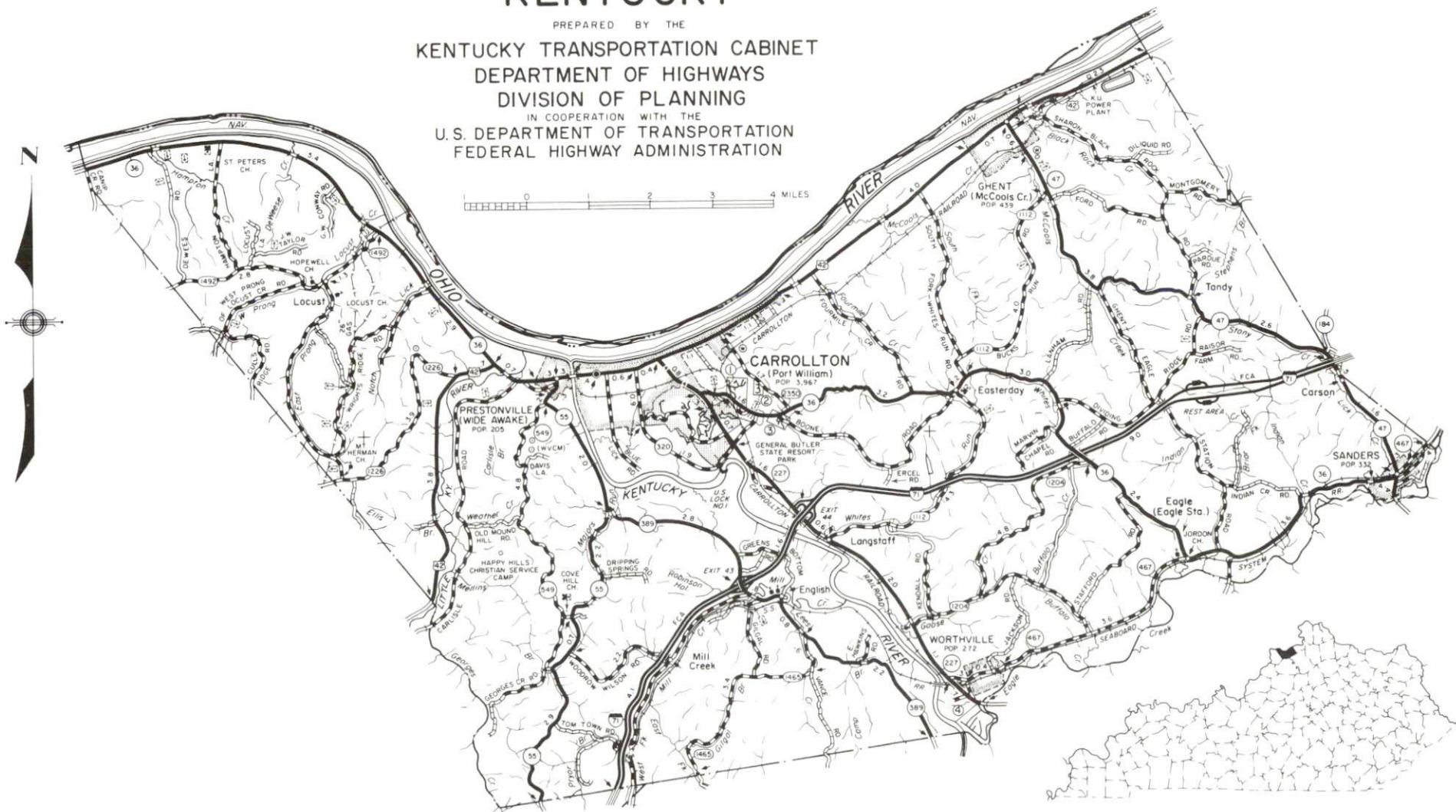
TABLE OF CONTENTS

<u>Chapter</u>	<u>Page</u>
CARROLLTON, KENTUCKY - A RESOURCE PROFILE	1
THE LABOR MARKET STATISTICS	2
Labor Market Area Map	2
Population	3
Population Projections	3
Estimated Labor Supply	3
Labor Force Characteristics of Residents, 1990	4
Selected Components of Nonagricultural Employment, by Place of Work, 1990	5
Per Capita Personal Income	6
Average Placement Wages	7
Average Weekly Wages of Workers Covered by Unemployment Insurance 1989 - Bar Chart	8
Average Weekly Wages by Industry, by Place of Work, 1989	9
EXISTING INDUSTRY	10
Carrollton Manufacturing Firms, Their Products and Employment	10
Major Nonmanufacturing Employers	10
Labor Organizations in Manufacturing Firms	11
Selected Industrial Services	11
TRANSPORTATION	12
Highways	12
Truck Service	12
Selected Market Location Map	13
Rail	14
Air	14
Water	15
UTILITIES	16
Electricity	16
Natural Gas	17
Public Water Supply	17
Sewerage	18
CLIMATE	19

<u>Chapter</u>	<u>Page</u>
LOCAL GOVERNMENT	20
Structure	20
Planning and Zoning	20
Local Fees and Licenses.....	20
State and Local Property Taxes	21
EDUCATION	22
Public Schools	22
Area Colleges and Universities.....	22
Vocational Training.....	23
OTHER LOCAL FACILITIES.....	24
Local Medical Personnel	24
Hospitals.....	24
Other Medical Facilities and Services	24
Banks and Savings & Loan Associations.....	24
Newspapers	24
Telephone Service	24
RECREATION	25
COMMUNITY IMPROVEMENTS	26

GENERAL HIGHWAY MAP CARROLL COUNTY KENTUCKY

PREPARED BY THE
KENTUCKY TRANSPORTATION CABINET
DEPARTMENT OF HIGHWAYS
DIVISION OF PLANNING
IN COOPERATION WITH THE
U.S. DEPARTMENT OF TRANSPORTATION
FEDERAL HIGHWAY ADMINISTRATION



CARROLLTON, KENTUCKY - A RESOURCE PROFILE

Carrollton, the county seat of Carroll County, is located at the confluence of the Kentucky and Ohio Rivers. Carrollton is the home of Kentucky's only ski resort which is located at the General Butler State Resort Park. The city is located 51 miles northeast of Louisville, Kentucky and 59 miles southwest of Cincinnati, Ohio. In 1990, Carrollton had a population of 3,715 persons.

Carroll County, with a land area of 130 square miles, is located in the Outer Bluegrass Region. The Ohio River forms the northern boundary of the county. Carroll County's 1990 population was 9,292 persons.

The Economic Framework - The total number of Carroll County residents employed in 1990 averaged 4,710. Manufacturing firms in the county reported 1,751 employees; wholesale and retail trade provided 783 jobs; 460 people were employed in service occupations; state and local government accounted for 731 employees; and contract construction firms provided 179 jobs.

Labor Supply - There is a current estimated labor supply of 5,196 persons available for industrial jobs in the labor market area. In addition, from 1992 through 1996, 3,244 young persons in the area will become 18 years of age and potentially available for industrial jobs.

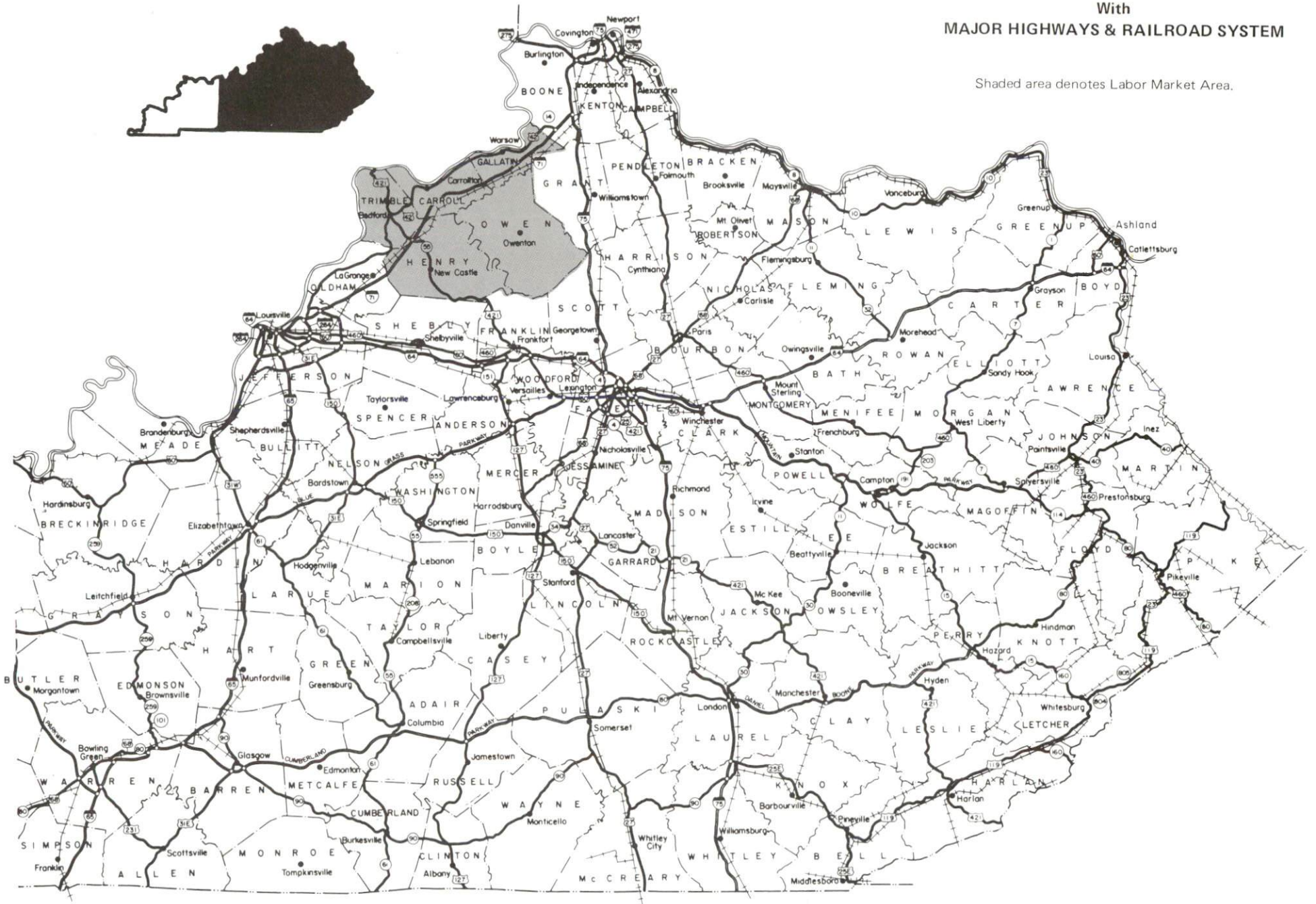
Transportation - Interstate Highway 71, U.S. Highway 42, and Kentucky Highway 227 are AAA-rated (80,000-pound gross load limit) highways serving Carrollton. Twenty-five trucking firms provide trucking service to Carrollton. The Carrollton Railroad, a subsidiary of CSX Transportation, provides rail service to Carrollton. The nearest scheduled commercial airline services are located at the Greater Cincinnati-Northern Kentucky International Airport, 55 miles northeast of Carrollton, and at Standiford Field near Louisville, 55 miles southwest of Carrollton. Madison Municipal Airport in Madison, Indiana, 18 miles west of Carrollton, maintains a 3,200-foot paved runway designed to accommodate small aircraft. A privately-owned riverport facility is located on the Ohio River near Carrollton.

Power and Fuel - Kentucky Utilities Company provides electric power to Carrollton and portions of Carroll County. Owen Electric Cooperative and Shelby Rural Electric Cooperative Corporation distribute power to the remainder of Carroll County. Carrollton Utilities provides natural gas service to Carrollton.

Education - Carroll County School System, accredited by Southern Association of Colleges and Schools, provides primary and secondary education to Carrollton and Carroll County. Carrollton residents may attend a variety of classes offered by both Northern Kentucky University and the Jefferson Community College in Carrollton. In addition, sixteen colleges and universities are located within 65 miles of Carrollton. Vocational training is available locally at the Carroll County Area Vocational Education Center. The Jefferson State Vocational-Technical School, and the Northern Kentucky State Vocational-Technical School are both located within 60 miles of Carrollton.

CARROLLTON LABOR MARKET AREA With MAJOR HIGHWAYS & RAILROAD SYSTEM

Shaded area denotes Labor Market Area.



LABOR MARKET STATISTICS

The Carrollton Labor Market Area includes Carroll County and the adjoining Kentucky counties of Gallatin, Henry, Owen, and Trimble.

POPULATION			
	1990	1980	1970
Labor Market Area	42,633	42,029	36,386
Carrollton	3,715	3,967	3,884
Carroll County	9,292	9,270	8,523

Source: U.S. Department of Commerce, Bureau of the Census, January 1991.

POPULATION PROJECTIONS				
	2000	2010	2020	2030
Labor Market Area	47,210	48,620	49,250	48,910
Carroll County	10,350	10,650	10,850	10,880

Source: University of Louisville, Urban Studies Center, State Data Center.

ESTIMATED LABOR SUPPLY					
	Current				Future
	Total	Unemployed	Employed Part-Time	Not in Labor Force	Becoming 18 years of age 1992 thru 1996
Labor Market Area*	5,196	1,124	2,160	1,912	3,244
Carroll County	951	245	486	220	685

* Additional workers may be drawn from other nearby counties.

Note: Unemployed - persons unemployed and actively seeking work; Employed Part-Time - persons employed but working only 14 to 26 weeks per year; Not in Labor Force - represents the number of persons who would enter the labor force if suitable employment were available (based on the assumption that persons in Kentucky would like to participate in the labor force in the same proportion that they do nationally).

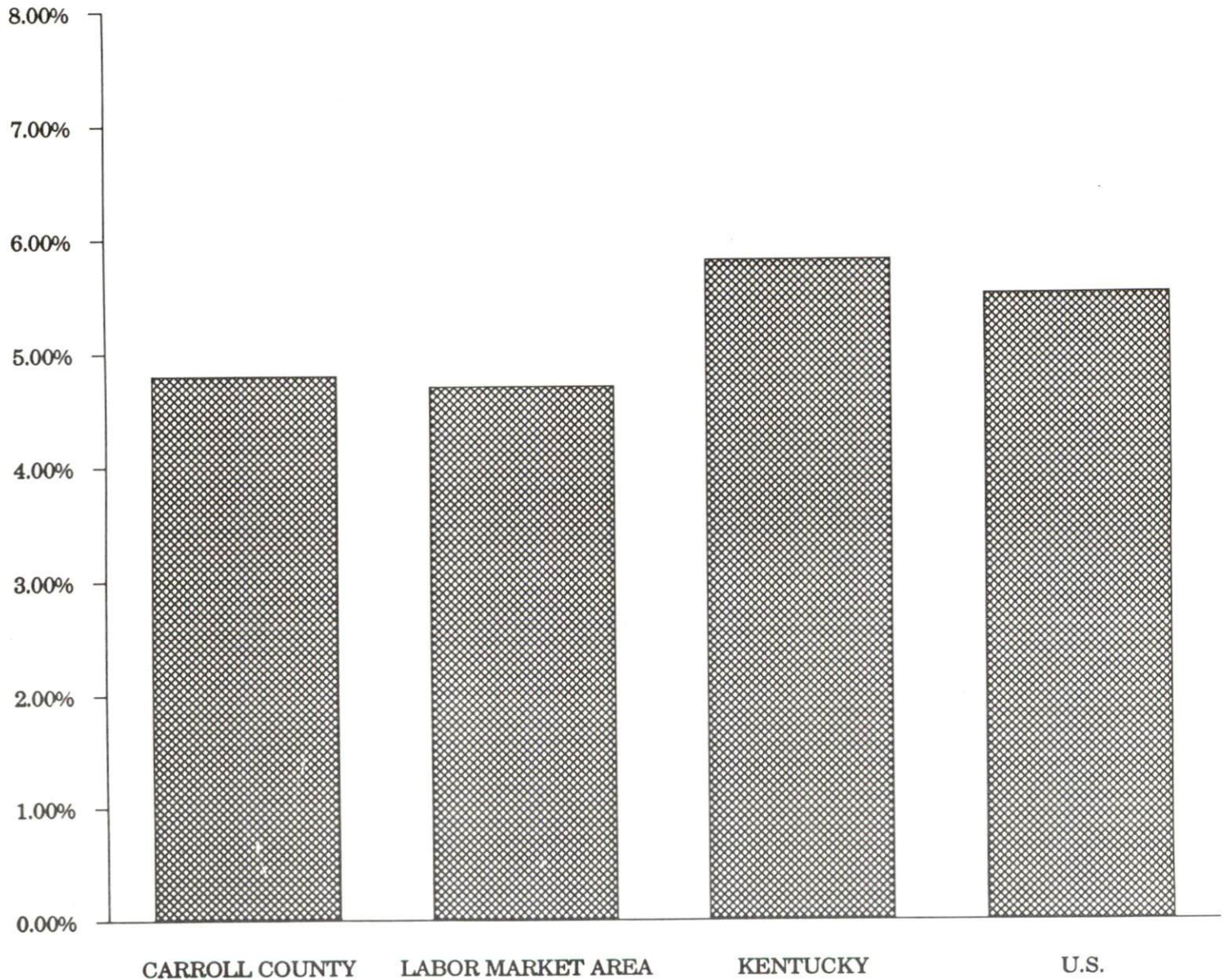
Sources: Kentucky Cabinet for Human Resources, Kentucky Labor Supply Estimates by County, 1989. Kentucky Cabinet for Economic Development, Future Labor Supply Becoming 18 Years of Age, 1992 thru 1996.

LABOR FORCE CHARACTERISTICS OF RESIDENTS, 1990

	<u>Carroll County</u>	<u>Labor Market Area</u>
Civilian Labor Force	4,949	24,220
Employment	4,710	23,083
Unemployment	239	1,137
Rate of Unemployment (%)	4.8	4.7

Source: Kentucky Cabinet for Human Resources, Kentucky Labor Force Estimates, Annual Averages, 1990.

UNEMPLOYMENT RATES
1990

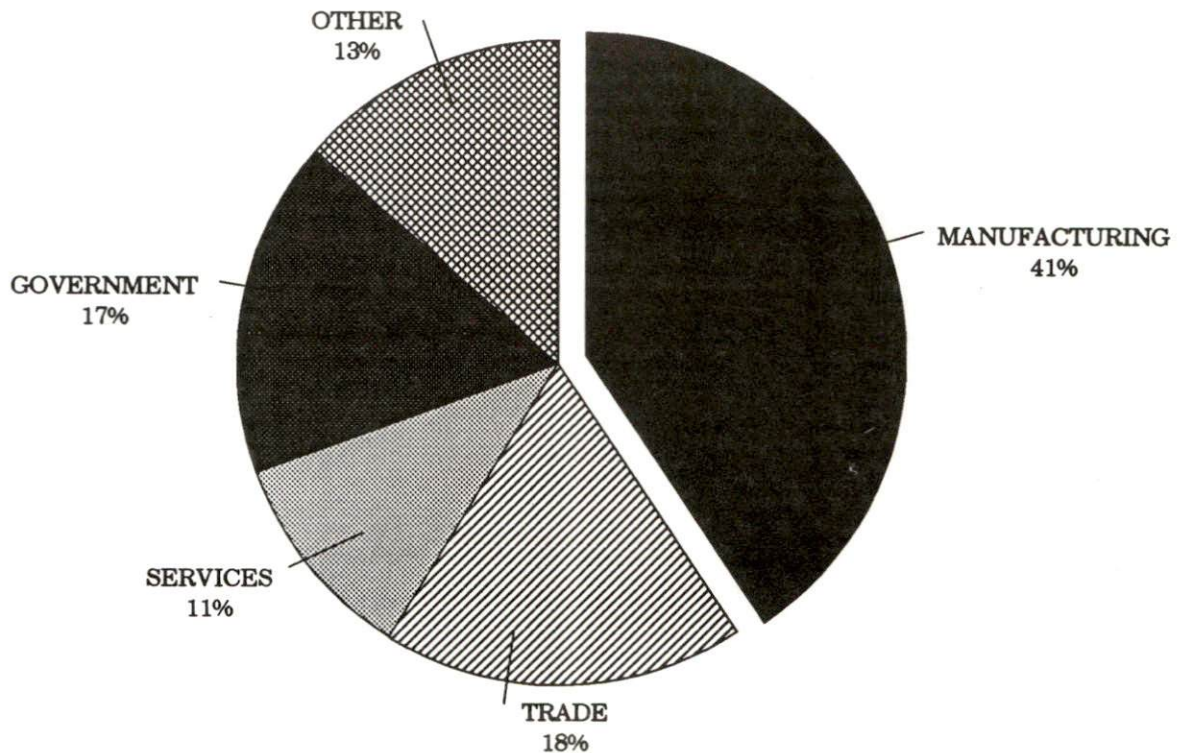


SELECTED COMPONENTS OF NONAGRICULTURAL EMPLOYMENT
BY PLACE OF WORK, 1990

	<u>Carroll County</u>	<u>Labor Market Area</u>
All Industries (total)	4,294	10,381
Manufacturing	1,751	2,541
Wholesale & Retail Trade	783	2,146
Services	460	1,292
State/Local Government	731	2,047
Contract Construction	179	310

Note: Excludes domestic workers, railway workers, certain nonprofit corporations, majority of federal government workers, and self-employed workers.
Source: Kentucky Cabinet for Human Resources, Average Monthly Workers Covered by Kentucky Unemployment Insurance Law, 1990.

CARROLL COUNTY

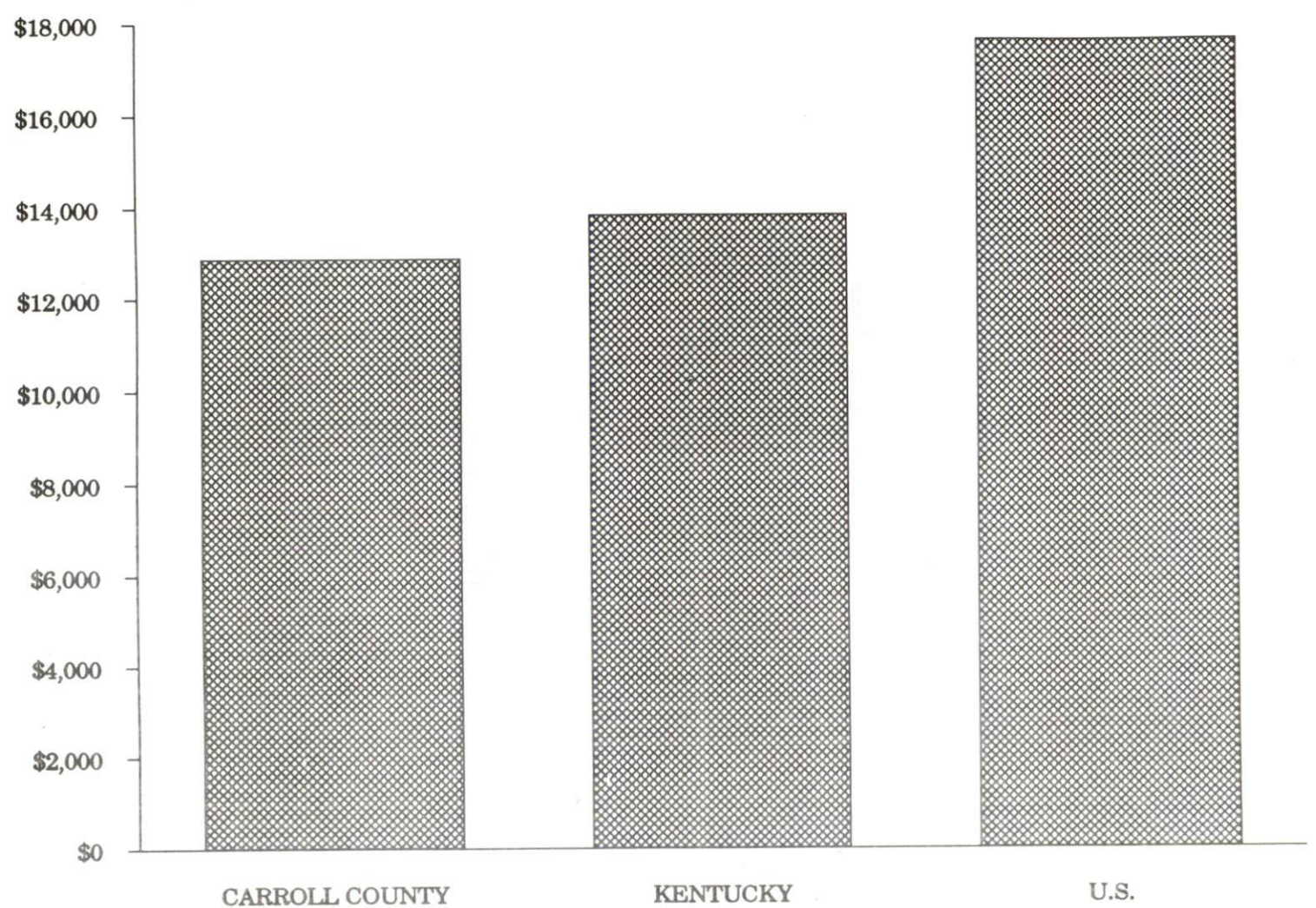


PER CAPITA PERSONAL INCOME

Area	1985	1989	Percent Change
Carroll County	\$9,478	\$12,875	35.8
Labor Market Area Range	\$8,017 - \$9,478	\$10,494 - \$13,511	-
Kentucky	\$10,755	\$13,823	28.5
U.S.	\$13,899	\$17,594	26.6

Source: U.S. Bureau of Economic Analysis, Kentucky Economic Information System, April 1991.

PER CAPITA PERSONAL INCOME
1989



AVERAGE PLACEMENT WAGES

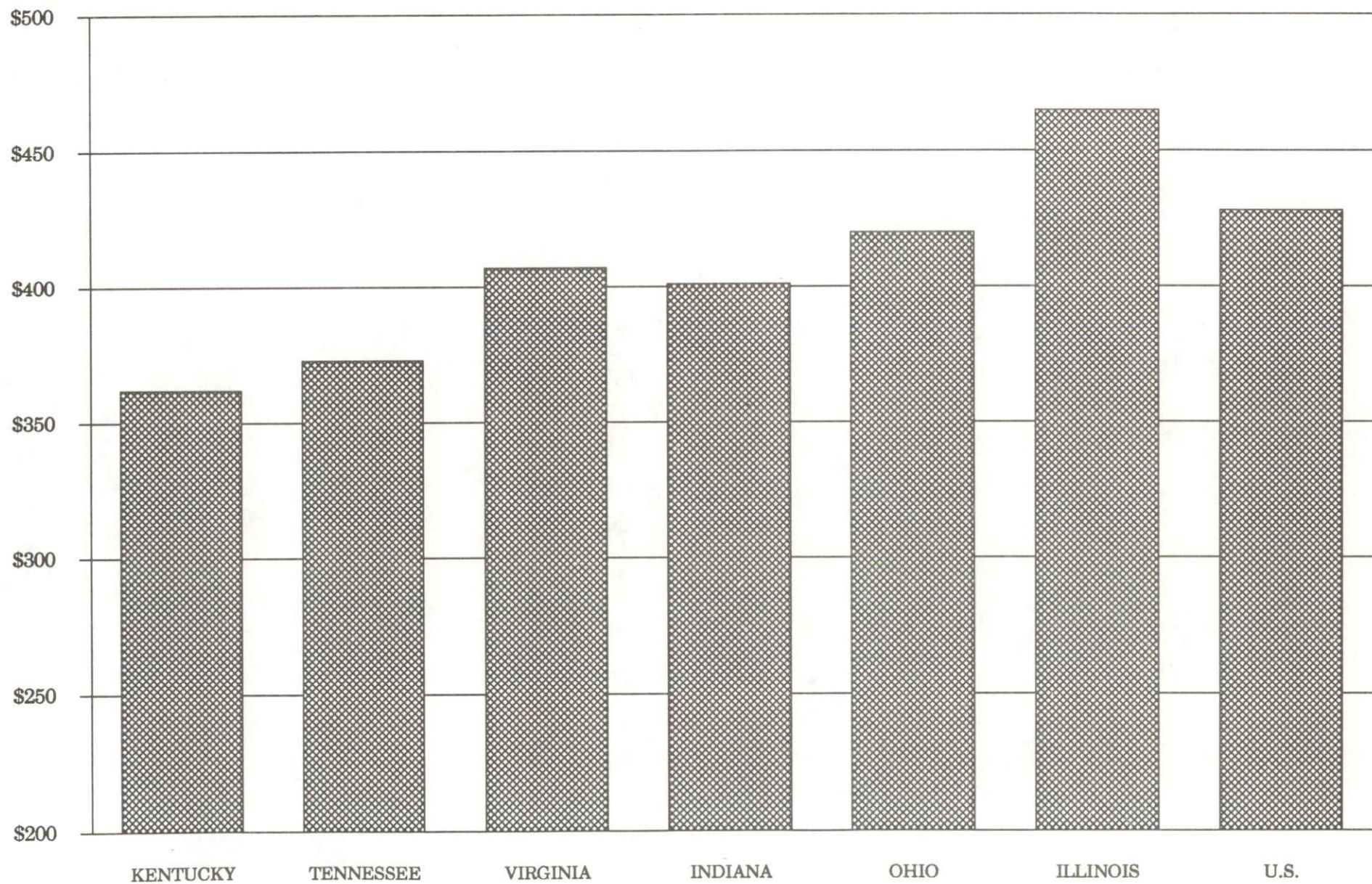
Carroll County is served by the Covington local office of the Kentucky Department for Employment Services. The focus of the following data is on job placements made by the Covington local office and may therefore be used as an indicator of the wages which employers in the area pay new employees. During the twelve months which ended on June 30, 1990, the local employment office filled 6,640 job openings in various occupational categories. The average hourly wage for selected occupational categories were:

<u>OCCUPATIONAL CATEGORY</u>	<u>NUMBER OF PLACEMENTS</u>	<u>AVERAGE WAGE(\$)</u>
All Occupations	6,640	5.18
Clerical	929	4.73
Sales	228	4.30
Services (excluding domestic)	1,214	4.03
Agricultural, Fishery, Forestry, etc.	66	4.13
Processing	259	7.99
Machine Trades	557	6.85
Bench Work	553	4.94
Structural	456	6.75
Motor Freight/ Transportation	246	5.45
Packaging and Materials Handling	2,037	4.96
Other	12	6.41

The Covington local office also serves Boone, Campbell, Gallatin, Grant, Kenton, Owen, and Pendleton Counties. The above occupational categories are taken from the Dictionary of Occupational Titles published by the U.S. Department of Labor.

Source: Kentucky Cabinet for Human Resources, Department for Employment Services.

AVERAGE WEEKLY WAGES OF WORKERS COVERED BY
UNEMPLOYMENT INSURANCE - 1989



AVERAGE WEEKLY WAGES BY INDUSTRY
BY PLACE OF WORK, 1989*

	Carroll County	Kentucky (State- Wide)	Tennessee	Virginia
All Industries	\$390.93	\$362.03	\$373.00	\$407.00
Mining & Quarrying	N/A	623.82	522.00	576.00
Contract Construction	394.03	388.21	407.00	434.00
Manufacturing	510.99	472.92	431.00	470.00
Transportation, Communications & Public Utilities	578.77	482.22	493.00	575.00
Wholesale & Retail Trade	210.73	245.12	N/A	N/A
Finance, Insurance & Real Estate	281.86	417.89	448.00	488.00
Services	173.58	310.29	357.00	409.00
State/Local Government	309.68	370.61	N/A	N/A
	<u>Indiana</u>	<u>Ohio</u>	<u>Illinois</u>	<u>U. S.</u>
All Industries	\$401.00	\$420.00	\$465.00	\$428.00
Mining & Quarrying	693.00	596.00	707.00	688.00
Contract Construction	464.00	480.00	608.00	485.00
Manufacturing	546.00	580.00	566.00	534.00
Transportation, Communications & Public Utilities	504.00	533.00	582.00	556.00
Wholesale & Retail Trade	N/A	N/A	N/A	N/A
Finance, Insurance & Real Estate	418.00	456.00	594.00	544.00
Services	328.00	360.00	419.00	399.00
State/Local Government	N/A	N/A	N/A	N/A

* Wages for U.S. and surrounding states rounded to nearest dollar.

N/A Not Available.

Note: The average weekly wage for each category includes the salaries and wages of all persons working for that type business. For example, the manufacturing category includes both production workers and administrative personnel. Excludes domestic workers, railway workers, certain nonprofit corporations, majority of federal government workers, and self-employed workers.

Source: Kentucky Cabinet for Human Resources, Average Weekly Wages of Workers Covered by Kentucky Unemployment Insurance Law, 1989. U.S. Department of Labor, Bureau of Labor Statistics, Employment and Wages, Annual Averages, 1989, October 1990.

EXISTING INDUSTRY

CARROLLTON MANUFACTURING FIRMS, THEIR PRODUCTS AND EMPLOYMENT

<u>Firm</u> <u>(Establishment date)</u>	<u>Product</u>	<u>1990</u> <u>Average Employment</u>
Atochem North America (1958)	Inorganic & organic tin chemicals	340
Carrollton Cabinet Company, Inc. (1960)	Coffee & end tables, office furniture, electronic & clock cabinets	35
COO PAR Concrete of Kentucky (1949)	Ready-mixed concrete	12
Dayton Walther Corporation, Casting Center (1972)	Truck hubs and wheels	102
Dayton Walther Corporation, Machining Center (1972)	Truck hubs, brakes, and steering components; auto disc and drum brakes, steering knuckles	330
Dow Corning Corporation (1967)	Silicones	373
Kawneer Company (1965)	Aluminum appliance trim	234
Kentucky Ladder Company (1989)	Wood ladders	97
News-Democrat (1867)	Job printing & newspaper	7
Ohio Valley Contractors, Inc. (1953)	Asphaltic concrete	4
Smith Tool & Fabrication (1990)	Metal fabrication, welding, precision machining	2
Teledyne Packaging, Inc. (1954)	Metal collapsible tubes	129
Woodmaster Foundations, Inc. (1987)	Permanent wood foundations	11

Sources: Kentucky Cabinet for Economic Development, Division of Research and Planning.

MAJOR CARROLL COUNTY NONMANUFACTURING EMPLOYERS

Kentucky Utilities Company, an electric power generation and transmission company, operates a plant at Ghent, Kentucky which employs 231 persons.

LABOR ORGANIZATIONS IN MANUFACTURING FIRMS

<u>Union</u>	<u>Representing workers at:</u>
International Union, United Automobile, Aerospace and Agricultural Implement Workers of America	Dayton Walther Corporation, Casting Center Dayton Walther Corporation, Machining Center Kawneer Company
International Union of Operating Engineers, AFL-CIO	Ohio Valley Contractors, Inc.
United Steelworkers of America, AFL-CIO-CLC	Teledyne Packaging, Inc.

SELECTED INDUSTRIAL SERVICES

<u>Types of Services</u>	<u>Location</u>	<u>Mileage from Carrollton</u>
Custom Data Processing	Jeffersontown, Kentucky	48
	Louisville, Kentucky	51
Custom Plastics Producers	LaGrange, Kentucky	27
Electric Motor Repair	Louisville, Kentucky	51
Grinding, Precision & Tool	Madison, Indiana	13
Heat Treating Facilities	Louisville, Kentucky	51
Industrial Equipment & Supplies	Madison, Indiana	13
Industrial Gases	Louisville, Kentucky	51
Industrial Waste Removal	Buckner, Kentucky	31
Machine Shops, Tool & Die	Carrollton, Kentucky	-
Metal Castings	Carrollton, Kentucky	-
Metal Finishers	Jeffersontown, Kentucky	48
	Louisville, Kentucky	51
Metal Service Centers	Louisville, Kentucky	51
Millwrights	Erlanger, Kentucky	51
	Louisville, Kentucky	51
Public Warehouse Facilities	Florence, Kentucky	47

Sources: Kentucky Cabinet for Economic Development, Division of Research and Planning; Carroll County Community Development Corporation.

TRANSPORTATION

Highways

Major highways serving Carrollton include Interstate 71, U.S. Highway 42, and Kentucky Route 227. Each of these highways are AAA-rated (80,000-pound gross load limit) trucking highways.

An interchange of Interstate 71 is located four miles southeast of Carrollton via Kentucky 227. Interstate 71 provides direct access to Interstate 75, thirty-six miles northeast of Carrollton, near Cincinnati, Ohio; and to Interstates 64 and 65 in Louisville, fifty miles southwest of Carrollton.

HIGHWAY MILES FROM CARROLLTON, KENTUCKY, TO SELECTED MARKET CENTERS

City	Highway Miles	City	Highway Miles
Atlanta, GA	433	Los Angeles, CA	2,159
Baltimore, MD	556	Louisville, KY	51
Birmingham, AL	415	Nashville, TN	219
Chicago, IL	343	New Orleans, LA	736
Cincinnati, OH	59	New York, NY	706
Cleveland, OH	303	Pittsburgh, PA	346
Detroit, MI	318	St. Louis, MO	314
Knoxville, TN	267		

Note: Mileage computations are via the best interstate or primary highways, not necessarily the most direct route of travel.

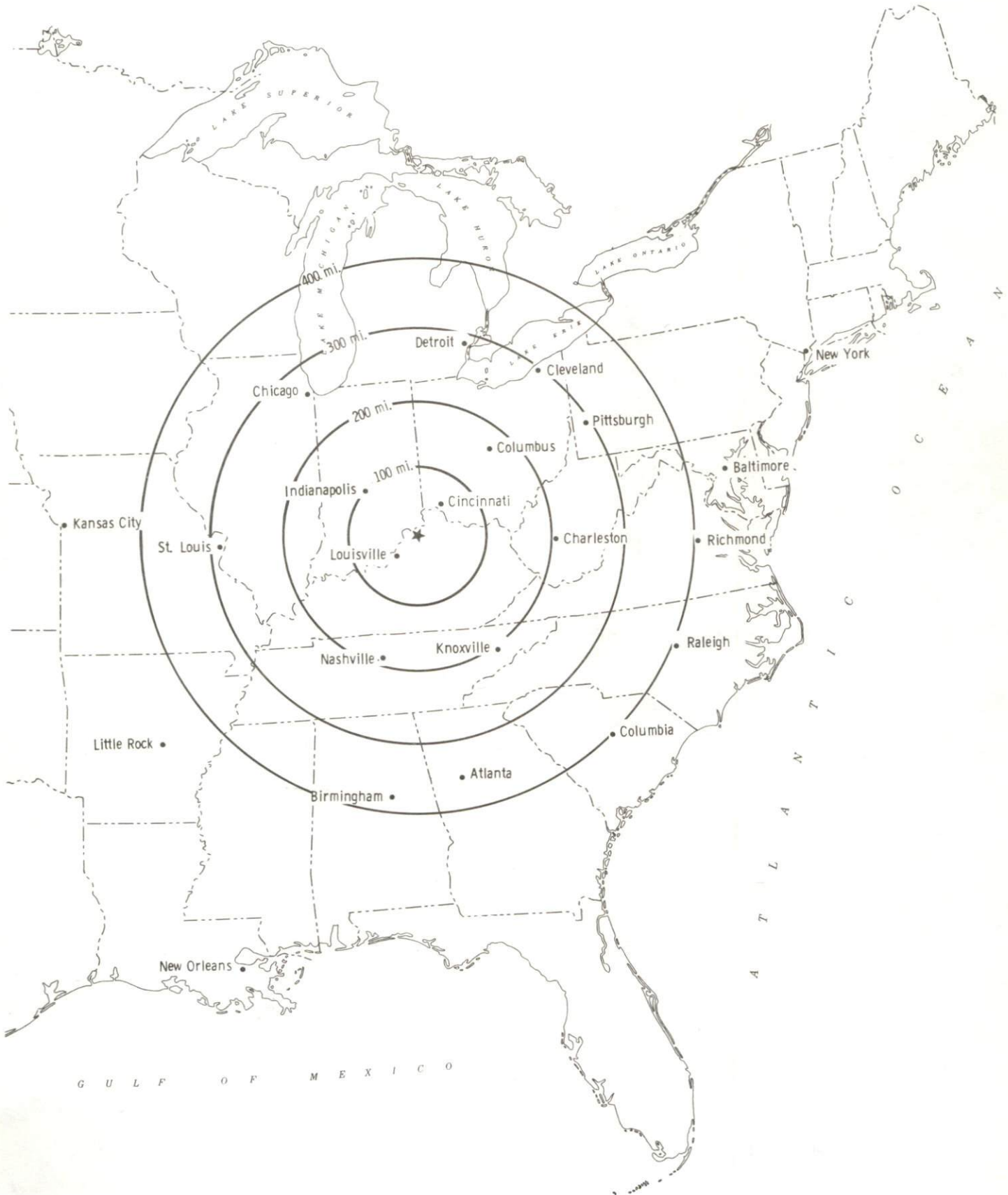
Sources: Rand McNally Deluxe Motor Carriers' Road Atlas, 1989. Official Kentucky Mileage Map, 1980.

Truck Service

Twenty-five trucking firms provide interstate and/or intrastate service to Carrollton. One company maintains a local terminal in Carrollton.

Source: American Motor Carrier Directory, Fall 1991.

Selected Market Centers



Rail

The Carrollton Railroad, a subsidiary of CSX Transportation, provides branch line service to Carrollton. The line connects with CSX Transportation System at Worthville, nine miles southeast of Carrollton.

The nearest piggyback service is provided by Southern Railway System, Paducah and Louisville Railway, and Burlington Northern Railroad in Louisville, Kentucky, 51 miles southwest of Carrollton.

For details on routing, schedules, rates, and services contact:

The Carrollton Railroad
P.O. Box 253
Worthville, Kentucky 41098
(502) 732-6120

and/or

Industrial Development
CSX Transportation
9420 Bunsen Parkway
Suite 212
Louisville, Kentucky 40220
(502) 499-3025

Air

Local

Location: Madison Municipal Airport
5 miles west of Madison, Indiana; approximately
18 miles west of Carrollton

Runways: 1 paved
Length: 3,200 feet

Traffic Control: Unicom 122.8, Standiford Field approach control
123.7

Lighting: Beacon runway, REIL

Services: Jet-A and 100LL fuel, minor A & P repairs,
tie-down, hangars, charter service, flight
instruction, plane rental, car rental, taxi

Air Freight Service: Chartered air freight service must be arranged

The Madison Municipal Airport is in the process of extending its runway to 4,400 feet.

Nearest Scheduled Commercial Airline Service

Location: Standiford Field
4 miles southeast of center of Louisville, Kentucky;
55 miles southwest of Carrollton

Air Service: Air Toronto, Delta, Northwest, American,
Continental, TWA, United, USAir, ComAir,
Midway,

Daily Arrivals & Departures: 172

Location: Greater Cincinnati International Airport
8 miles southwest of Covington, Kentucky;
55 miles northwest of Carrollton

Air Service: American, Delta, Mesava, ComAir, TWA,
American Eagle, United, USAir,
Northwest Air Link, USAir Express,
Continental, Northwest, United Express

Daily Arrivals
& Departures: 774

Water

Carrollton is located at the confluence of the Kentucky and Ohio Rivers. A six-foot navigation channel is maintained on the Kentucky River, while a nine-foot navigation channel is maintained on the Ohio River. A privately owned port facility is located at Ghent, Kentucky in Carroll County. In addition, two privately owned public-use terminals are located in Madison, Indiana, 13 miles northwest of Carrollton.

Port facilities are also available in Louisville, Kentucky, 51 miles southwest of Carrollton, and in the Northern Kentucky-Cincinnati area, 58 miles northeast of Carrollton. The Louisville-Jefferson County Riverport Authority has been designated as a Foreign Trade Zone and offers complete U.S. Customs Services for exports and imports. The Port of Louisville, while privately owned, is also available for public use.

UTILITIES

Electricity

Company serving Carrollton and portions of Carroll County - Kentucky
Utilities Company

Source of power - Kentucky Utilities Company
For industrial rates contact:

Industrial Development Department
Kentucky Utilities Company
One Quality Street
Lexington, Kentucky 40507
(606) 255-1461

Company serving the eastern portion of Carroll County - Owen Electric
Cooperative

Source of power - East Kentucky Power Cooperative
For industrial rates contact:

Industrial Development Division
East Kentucky Power Cooperative
P.O. Box 707
Winchester, Kentucky 40392-0707
(606) 744-4812

and/or

Owen Electric Cooperative
510 Georgetown Road
Owenton, Kentucky 40359
(502) 484-3471 or (800) 372-7612

Company serving the western portion of Carroll County - Shelby County
Rural Electric Cooperative Corporation

Source of power - East Kentucky Power Cooperative
For industrial rates contact:

Industrial Development Division
East Kentucky Power Cooperative
P.O. Box 707
Winchester, Kentucky 40392-0707
(606) 744-4812

and/or

Shelby County Rural Electric
Cooperative
P.O. Box 309
Shelbyville, Kentucky 40066-0309
(502) 633-4420 or (800) 292-6585

Natural Gas

Company serving Carrollton - Carrollton Utilities
Source of supply - Texas Gas Transmission
For rates and supplies contact:

Carrollton Utilities
P.O. Box 269
Sixth & Sycamore Streets
Carrollton, Kentucky 41008
(502) 732-7055

Public Water Supply

Company serving Carrollton - Carrollton Utilities
P.O. Box 269
225 Sixth Street
Carrollton, Kentucky 41008
(502) 732-7055

Source - Wells; total pumping capacity - 2,200 gallons per minute
Treatment plant capacity - 1,296,000 gallons per day
Average daily consumption - 635,000 gallons
Peak daily consumption - 990,000 gallons
Storage capacity - 1,290,000 gallons
Water pressure - 90 psi to 135 psi

Carrollton Utilities is in the process of expanding and upgrading its existing water treatment plant. The \$1.4 million project will increase capacity to 1,500,000 gallons per day and is scheduled for completion by September 1992.

Name of water district - Carroll County Water District
P.O. Box 333
Carrollton, Kentucky 41008
(502) 732-4034

Area served - Carroll County and portion of Gallatin County
Source of raw water - Wells
Capacity of treatment plant - 650,000 gallons per day
Average daily consumption - 487,255 gallons
Peak daily consumption - 558,700 gallons
Storage capacity - 400,000 gallons
Water pressure - 30 psi to 250 psi

Sewerage

Company serving Carrollton and portions of Carroll County -

Carrollton Utilities
Sixth & Sycamore Streets
P.O. Box 269
Carrollton, Kentucky 41008
(502) 732-7055

Design capacity -	700,000 gallons per day
Average daily flow -	375,000 gallons
Type of treatment -	Secondary
Treated effluent discharged into -	Kentucky River

A secondary digester was completed in the spring of 1989 at a cost of \$250,000.

CLIMATE

Carroll County

Temperature

Normal (29-year record)	56.20 degrees
Average annual 1989	55.90 degrees
Record highest, July 1954 (42-year record)	105.00 degrees
Record lowest, January 1963 (42-year record)	-20.00 degrees
Normal heating degree days (29-year record) (Heating degree day totals are the sums of negative departures of average daily temperatures from 65 degrees F.)	4,525

Precipitation

Normal (29-year record)	43.56 inches
Mean annual snowfall (42-year record)	16.80 inches
Total precipitation 1989	50.97 inches
Mean number days precipitation (.01 inch or more) (42-year record)	124.00
Mean number days thunderstorms (42-year record)	45.20

Prevailing winds (through 1963)

South

Relative Humidity (29-year record)

1 a.m.	76 percent
7 a.m.	81 percent
1 p.m.	59 percent
7 p.m.	61 percent

Source: U.S. Department of Commerce, Environmental Science Services Administration, Climatological Data, 1989. Station of record: Louisville, Kentucky.

LOCAL GOVERNMENT

Structure

Carrollton is governed by a mayor and six council members. The mayor serves a four-year term while the council members each serve two-year terms. Carroll County is governed by a county judge/executive and three magistrates. Each county official serves a four-year term.

Planning and Zoning

City agency - Carrollton Planning Commission
Zoning enforced - Within city only
Subdivision regulations enforced - Within city and one mile beyond corporate limits
Local codes enforced - Building and housing
Mandatory state codes enforced - Kentucky Plumbing Code, National Electric Code, Kentucky Boiler Regulations and Standards, Kentucky Building Code (modeled after BOCA code)

Local Fees and Licenses

The City of Carrollton levies a business license fee on businesses operating within the city. The fees range from \$10 to \$600 annually. The annual fee for a manufacturer is \$200.

Carroll County levies a one percent occupational license tax on all gross wages, salaries, commissions, and other compensation earned within the county. In addition, the one percent tax is also levied on net profits on sales of all businesses, professions, or occupations for activities conducted in the county.

PROPERTY TAXES

The Kentucky Constitution requires the state to tax all classes of taxable property, and state statutes allow local jurisdictions to tax only a few classes. All locally taxed property is subject to county taxes and school district taxes (either a county school district or an independent school district). Property located inside of city limits may also be subject to city property taxes.

Special local taxing jurisdictions (fire protection districts, watershed districts, and sanitation districts) levy taxes within their operating areas (usually a small portion of community or county).

Property assessments in Kentucky are at 100% fair cash value. A 15% reduction is automatically granted for accounts receivable.

STATE PROPERTY TAX RATES PER \$100 VALUATION

<u>Selected Classes of Property</u>	<u>1990 State Rate</u>	<u>Local Taxation Permitted</u>
Real Estate	\$0.189	YES
Manufacturing Machinery	0.150	NO
Pollution Control Equipment	0.150	NO
Inventories		
Raw Materials	0.050	NO
Goods in Process	0.050	NO
Finished Goods	0.050	YES
Motor Vehicles	0.450	YES
Other Tangible Personal Property	0.450	YES
Intangibles (Accounts Receivable, Money on Hand)	0.250	NO

LOCAL PROPERTY TAX RATES PER \$100 VALUATION, 1990

<u>Taxing Jurisdiction</u>	<u>Real Estate</u>	<u>Finished Goods & Tangibles</u>	<u>Motor Vehicles</u>
Carroll County	\$0.1880	\$0.2143	\$0.2143
School Districts:			
Carroll County	0.4390	0.4390	0.3240
Cities:			
Carrollton	0.2500	0.2500	0.2500
Other:			
Ghent Fire Protection District	0.0480	0.0480	0.0480

EDUCATION

Public Schools

	Carroll County
Total Enrollment (Fall, 1990)	1,843
Accreditation	Southern Association of Colleges and Schools
Pupil-Teacher Ratio (1989-90)	17.7-1
Percent High School Graduates to College (1989-90)	38.4
Expenditures Per Pupil (1989-90)	\$2,981.89

The Carroll County School System recently completed a new media room which is located in the school board offices. In addition, the Top Brass Program was recently established by the School Board. The program enables students to receive discounts and free items from nearly thirty participating local businesses as a reward for good grades. Many businesses also participate in the Partnership Program by providing classroom instructors and mentorships.

Area Colleges and Universities

<u>Name</u>	<u>Location (Miles distant)</u>	<u>Enrollment (Fall, 1990)</u>
Hanover College	Hanover, Indiana (18)	1,058
Kentucky State University	Frankfort, Kentucky (50)	2,512
Bellarmino College	Louisville, Kentucky (51)	3,907
Jefferson Community College	Louisville, Kentucky (51)	10,240
Spalding University	Louisville, Kentucky (51)	1,028
University of Louisville	Louisville, Kentucky (51)	23,610
Thomas More College	Fort Mitchell, Kentucky (53)	1,297
Indiana University Southeast	New Albany, Indiana (54)	5,642
Athenaeum of Ohio	Cincinnati, Ohio (59)	290
Cincinnati Bible Seminary	Cincinnati, Ohio (59)	884
College of Mt. St. Joseph	Cincinnati, Ohio (59)	2,648
Hebrew Union College	Cincinnati, Ohio (59)	122
Southern Ohio College	Cincinnati, Ohio (59)	559
University of Cincinnati	Cincinnati, Ohio (59)	30,720
Xavier University	Cincinnati, Ohio (59)	6,680
Northern Kentucky University	Highland Heights, Kentucky (62)	11,260

Jefferson Community College recently began offering classes at the Carroll County Area Vocational School. The branch of Jefferson Community College offers English Composition, Principles of Office Management, Principles of Marketing, Psychology, Principles of Management, Chemical Technology, Sociology, Business Law, and Developmental Math. Northern Kentucky University also offers college level courses at the Carroll County Area Vocational Education Center.

Vocational Training

Vocational training is available at both the state vocational-technical schools and the area vocational education centers. The state vocational-technical schools are post-secondary institutions. The area vocational education centers are designed to supplement the curriculum of high school students. Both the state vocational-technical schools and the area vocational education centers offer evening courses to enable working adults to upgrade current job skills.

Arrangements can be made to provide training in the specific production skills required by an industrial plant. Instruction may be conducted either in the vocational school or in the industrial plant, depending upon the desired arrangement and the availability of special equipment.

Bluegrass State Skills Corporation

The Bluegrass State Skills Corporation, an independent public corporation created and funded by the Kentucky General Assembly, provides programs of skills training to meet the needs of business and industry from entry level to advanced training, and from upgrading present employees to retraining experienced workers.

The Bluegrass State Skills Corporation is the primary source for skills training assistance for a new or existing company. The Corporation works in partnership with other employment and job training resources and programs, as well as Kentucky's economic development activities, to package a program customized to meet the specific needs of a company.

<u>Vocational School</u>	<u>Location (Miles distant)</u>	<u>Cumulative Enrollment 1989-1990</u>
Carroll County Area Vocational Education Center	Carrollton, Kentucky	403
Jefferson State Vocational- Technical School and Manpower Skill Center	Louisville, Kentucky (51)	1,225
Northern Kentucky State Vocational-Technical School	Covington, Kentucky (60)	782

OTHER LOCAL FACILITIES

Local Medical Personnel

Physicians - 6
Dentists - 3

Hospitals

<u>Hospital</u>	<u>Location</u>	<u>General Beds</u>
Carroll County Memorial Hospital	Carrollton	49

Medical staff - eight active staff physicians, eight courtesy staff physicians,
23 registered nurses, seven licensed practical nurses

Other Medical Facilities and Services

Carroll County Health Center
Carroll County Ambulance Service
Comprehensive Care Center

Banks and Savings & Loan Associations

Carrollton Federal Savings & Loan Association
The First National Bank of Carrollton
Kentucky National Bank
United Citizens Trust and Savings Company

Newspapers

The News-Democrat (weekly)

Telephone Service

South Central Bell

RECREATION

Local

Carrollton's location on the Ohio and Kentucky Rivers afford an interesting variety of recreational opportunities. The area's pleasant quality of life is complemented by a city park, a county park, and a state resort park; as well as organized team sports, annual festivals, and even occasional stops by sternwheeler steamboats that cruise the Ohio River.

The six-acre Point Park is located at the confluence of the Kentucky and Ohio Rivers and offers a boat dock, a playground, camping, picnic areas, a softball field, a soccer field, and a Frisbee golf course.

A 35-acre lighted recreational park is located in Carroll County. The park offers six tennis courts, two softball fields, a volleyball court, a soccer field, a playground, a tot lot, basketball goals, a junior Olympic-size swimming pool with dressing rooms and restrooms, a wading pool, a jogging fitness trail, a golf driving range, picnic tables, and grills.

General Butler State Resort Park is located in Carrollton. The park is the site of the Ski Butler ski area, the state's only publicly owned ski facility. The park includes a 30-acre lake, a boat dock, a nine-hole golf course, a swimming pool, playgrounds, shuffleboard, tennis courts, planned recreation, fishing, camping, horseback riding, 58 lodge rooms, cottages, and gift shops. General Butler's family home, the Butler Mansion, has been restored and contains a museum of Ohio River lore.

Free guided tours are available at the historic Masterson House, built in 1790. This is one of the oldest two-story brick homes still standing on the banks of the Ohio River between Pittsburgh and Cairo, Illinois.

The Carrollton Recreation Department and the local churches provide supervised recreation programs, including Little League football, baseball, and basketball. Six playgrounds, tennis courts, a baseball diamond, a football field, boating facilities, and private docks are located throughout the city.

Annual events in Carroll County include the Carroll County Fair in early July, featuring exhibits and 4-H judging; the Kentucky Scottish Heritage Weekend held in May; the Goldenrod Gala in early June - an arts and crafts festival; a series of plays which are presented on four weekends in July; and the Tobacco Festival held in late September, featuring a parade, a flea market, and entertainment. A performing arts series brings four professional touring groups to Carrollton each year.

Area (Within 55 miles)

Clifty Falls State Park

Glenwood Hall

Big Bone Lick State Park

E.P. Tom Sawyer State Park

Churchill Downs

Turfway Park

Kentucky's State Capital (Frankfort)

Two major metropolitan areas:

Northern Kentucky and Cincinnati Area

Louisville, Kentucky

COMMUNITY IMPROVEMENTS

Carrollton re-certified as a "Kentucky Certified City" in 1990, and is distinguished as a gold award winner recognizing eight consecutive years of certification. Re-certification is based on achievement in the following areas: existing industry assistance, small business assistance, educational resources, and community development factors of health care, public safety, arts and culture, recreation, governmental awareness and resources. The Certified Cities Program is sponsored by the Kentucky Chamber of Commerce.

Recent

Vanity Fair Factory Outlet Mall opened a 40,000-square-foot mall facility in the summer of 1989 near the I-71 interchange.

The Carroll County School System recently completed a new media room which is located in the school board offices.

The Top Brass Program was recently established by the Carroll County School Board. The program enables students to receive discounts and free items from nearly thirty participating local businesses as a reward for good grades. Many businesses also participate in the Partnership Program by providing classroom instructors and mentorships.

Jefferson Community College recently started offering classes at the Carroll County Area Vocational School. The branch of Jefferson Community College will offer English Composition, Principles of Office Management, Principles of Marketing, Psychology, Principles of Management, Chemical Technology, Sociology, Business Law, and Developmental Math. Northern Kentucky University will continue to offer college level courses at the Carroll County Area Vocational Education Center.

Under Way

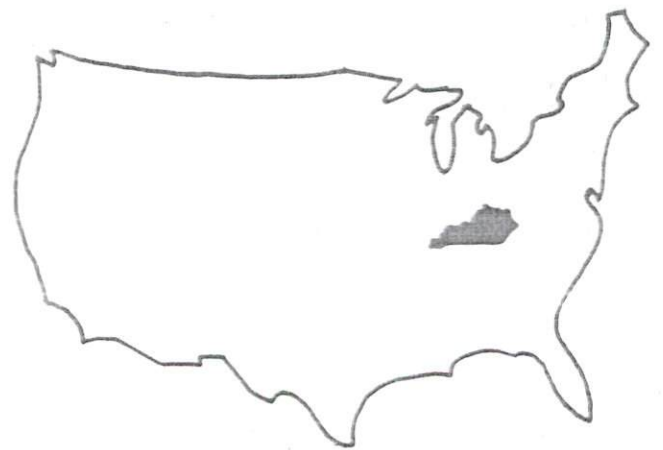
Dow Corning is currently implementing a \$150 million expansion project which is scheduled for completion by Fall 1991. The expansion will increase plant capacity by fifty percent.

Dayton Walther Corporation is undergoing a \$12 million equipment expansion, which is scheduled for completion by early 1992.

Teledyne Wirz is undergoing a \$3 million equipment expansion and is scheduled for completion by early 1992.

Carrollton Utilities is in the process of expanding and upgrading its existing water treatment plant. The \$1.4 million project will increase capacity to 1,500,000 gallons per day and is scheduled for completion by September 1992.

Development of the "911" emergency communications system is under way in Carroll County.



KENTUCKY
Open for Business