

1994

Industrial Resources - Floyd County - Prestonsburg

Kentucky Library Research Collections
Western Kentucky University, spcol@wku.edu

Follow this and additional works at: https://digitalcommons.wku.edu/floyd_pty



Part of the [Business Administration, Management, and Operations Commons](#), [Growth and Development Commons](#), and the [Infrastructure Commons](#)

Recommended Citation

Kentucky Library Research Collections, "Industrial Resources - Floyd County - Prestonsburg" (1994). *Floyd County*. Paper 3.
https://digitalcommons.wku.edu/floyd_pty/3

This Report is brought to you for free and open access by TopSCHOLAR®. It has been accepted for inclusion in Floyd County by an authorized administrator of TopSCHOLAR®. For more information, please contact topscholar@wku.edu.

1517 Floyd County

Kentucky

Resources For Economic Development

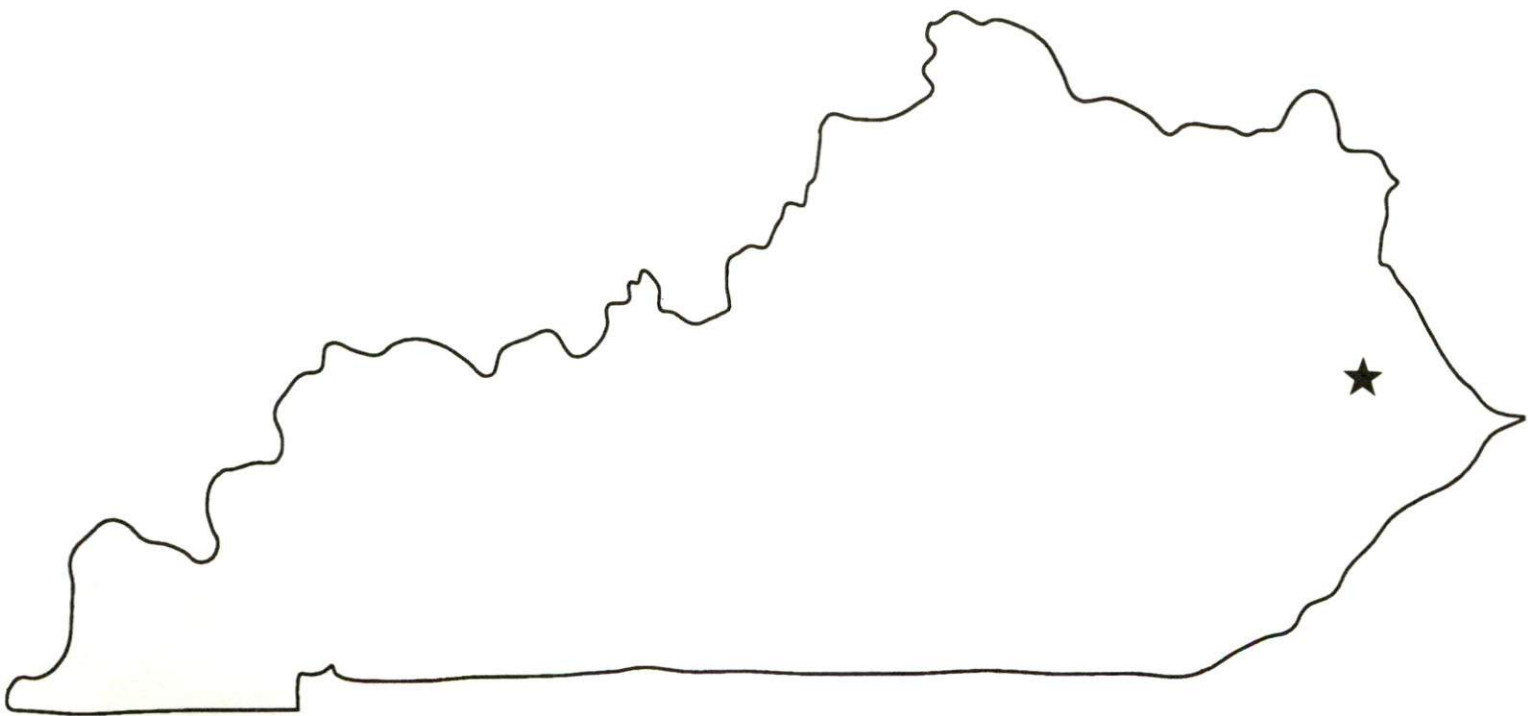
Prestonsburg

Albany
Barbourville
Ballard County
Bardstown • Booneville Berea
Bowling Green • Boyd & Greenup Counties
Bracken County • Brandenburg • Breckinridge
Brownsville • Bullitt County • Burkesville • Cadiz
Campbellsville • Campton • Carlisle • Carlisle County
Carrollton • Cave City • Clinton • Columbia • Corbin • Cythiana
Danville • Dawson Springs • Edmonton • Elizabethtown • Estill County
Elliott County • Falmouth & Butler • Flemingsburg • Frankfort • Franklin
Frenchburg • Fulton County • Gallatin County • Georgetown • Grant County • Greensburg
Grayson & Olive Hill • Glasgow • Hancock County • Harlan County • Harrodsburg • Hart County
Hazard • Henderson • Henry County • Hodgenville • Hopkinsville • Christian County • Jackson County
Jackson • Knott County • LaGrange & Buckner • Lancaster • Lawrenceburg • Lebanon • Leitchfield
Grayson County • Letcher County • Lexington • Liberty • Casey County • Logan County • Louisville
London • Louisa • Lyon County • Madisonville & Earlington • Manchester • Marshall County • Mayfield
Maysville • McCreary County • Marion • McLean County • Middlesboro & Pineville • Monticello • Morehead
Morgantown • Mt. Sterling • Mt. Vernon • Muhlenberg County • Murray • Nicholasville • Northern Kentucky
Ohio County • Owensboro • Owenton • Owingsville • Paducah • Paintsville • Paris • Pike County • Powell
Prestonsburg • Princeton • Radcliff • Richmond • Russell County • Scottsville • Shelbyville • Somerset
Springfield • Stamping Ground • Stanford • Lincoln County • Tompkinsville & Gamaliel • Taylorsville
Todd County • Union County • Vanceburg • Versailles • Webster County • West Liberty • Williamsburg
Winchester, Kentucky

Kentucky

**Resources For
Economic Development**

Prestonsburg



PRESTONSBURG>\$.00



CB96

Prepared by
The Kentucky Cabinet for Economic Development
Division of Research
in cooperation with
Floyd County Development Authority

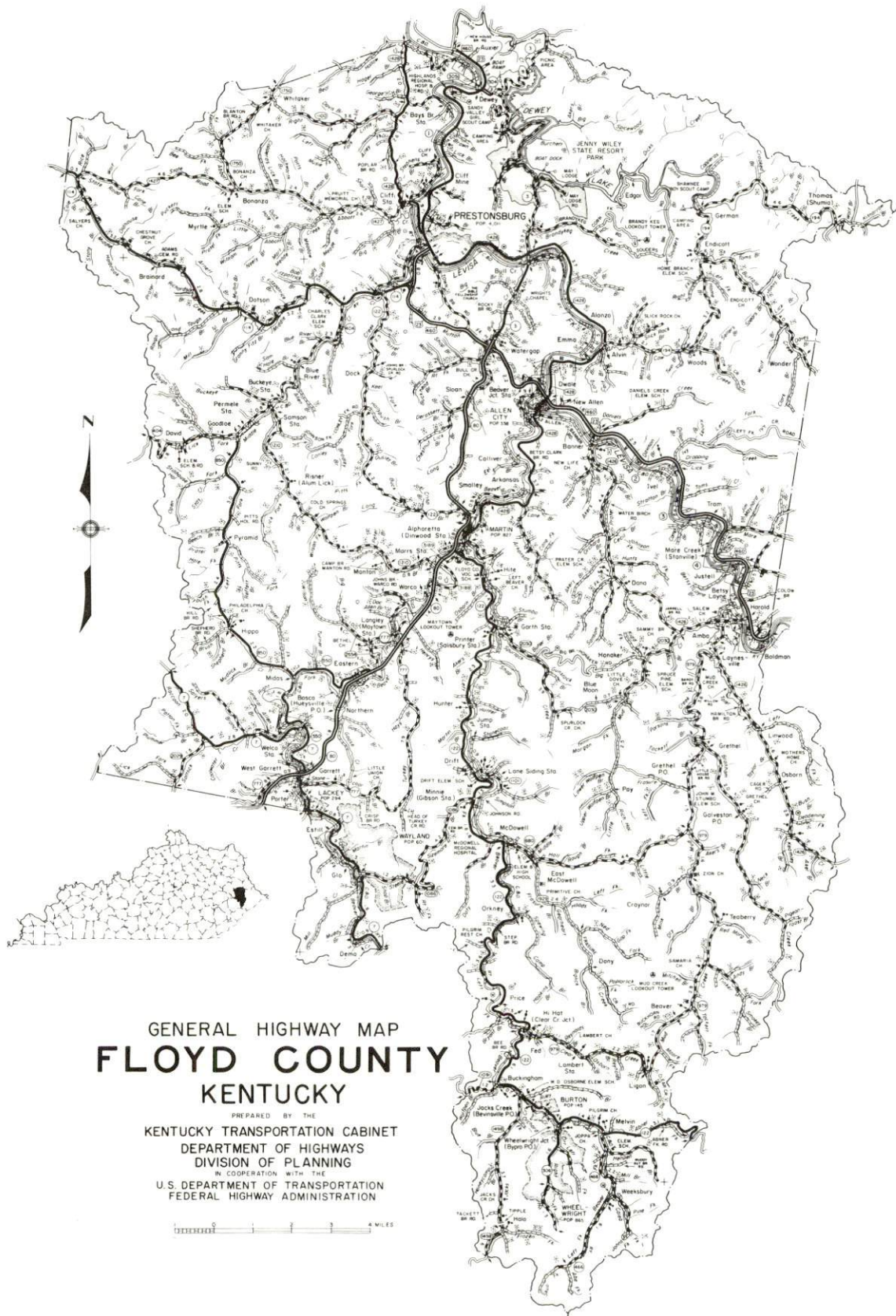
1994

Division Director - Pamela K. Riley; program manager - Keith Roberts; research - Barry K. Holder, Jr.; clerical - Wanda Sharp; graphics - Robert Owens. Cost of printing paid from state funds.

TABLE OF CONTENTS

<u>Chapter</u>	<u>Page</u>
PRESTONSBURG, KENTUCKY - A RESOURCE PROFILE	1
THE LABOR MARKET STATISTICS.....	2
Labor Market Area Map.....	2
Population	3
Population Projections.....	3
Estimated Labor Supply	3
Labor Force Characteristics of Residents, 1992	4
Selected Components of Nonagricultural Employment, by Place of Work, 1992	5
Per Capita Personal Income	6
Average Placement Wages	7
Average Weekly Wages of Workers Covered by Unemployment Insurance 1992 - Bar Chart	8
Average Weekly Wages by Industry, by Place of Work, 1992	9
EXISTING INDUSTRY	10
Floyd County Manufacturing Firms, Their Products and Employment.....	10
Labor Organizations in Manufacturing Firms.....	11
Selected Industrial Services	12
TRANSPORTATION	13
Highways	13
Truck Service	13
Selected Market Location Map	14
Rail	15
Air	15
UTILITIES.....	16
Electricity	16
Natural Gas	16
Public Water Supply	17
Sewerage	17
CLIMATE	18

<u>Chapter</u>	<u>Page</u>
LOCAL GOVERNMENT	19
Structure	19
Planning and Zoning	19
Local Fees and Licenses	19
State and Local Property Taxes	20
EDUCATION	21
Public Schools	21
Nonpublic Schools	21
Area Colleges and Universities	21
Vocational Training	23
OTHER LOCAL FACILITIES	25
Local Medical Personnel	25
Hospitals	25
Other Medical Facilities and Services	25
Banks and Savings & Loan Associations	25
Newspapers	25
Telephone Service	25
RECREATION	26



GENERAL HIGHWAY MAP
FLOYD COUNTY
KENTUCKY

PREPARED BY THE
KENTUCKY TRANSPORTATION CABINET
DEPARTMENT OF HIGHWAYS
DIVISION OF PLANNING
IN COOPERATION WITH THE
U.S. DEPARTMENT OF TRANSPORTATION
FEDERAL HIGHWAY ADMINISTRATION

0 1 2 3 4 MILES

PRESTONSBURG, KENTUCKY - A RESOURCE PROFILE

Prestonsburg, the county seat of Floyd County, is located in the Eastern Coal Field Region of Kentucky. Prestonsburg is located 120 miles southeast of Lexington, Kentucky; 190 miles southeast of Louisville, Kentucky; 163 miles southeast of Cincinnati, Ohio; and 188 miles northeast of Knoxville, Tennessee. In 1990, Prestonsburg had a population of 3,595. Floyd County, which covers a land area of 394 square miles, had a 1990 population of 43,586.

The Economic Framework - The total number of Floyd County residents employed in 1992 averaged 14,168. Manufacturing firms in the county reported 328 employees; wholesale and retail trade provided 2,910 jobs; 2,758 people were employed in service occupations; state and local government accounted for 2,124 employees; and 1,549 people were employed by mining and quarrying operations.

Labor Supply - There is a current estimated labor supply of 35,572 persons available for industrial jobs in the labor market area. In addition, from 1994 through 1998, 16,183 young persons in the area will become 18 years of age and potentially available for industrial jobs.

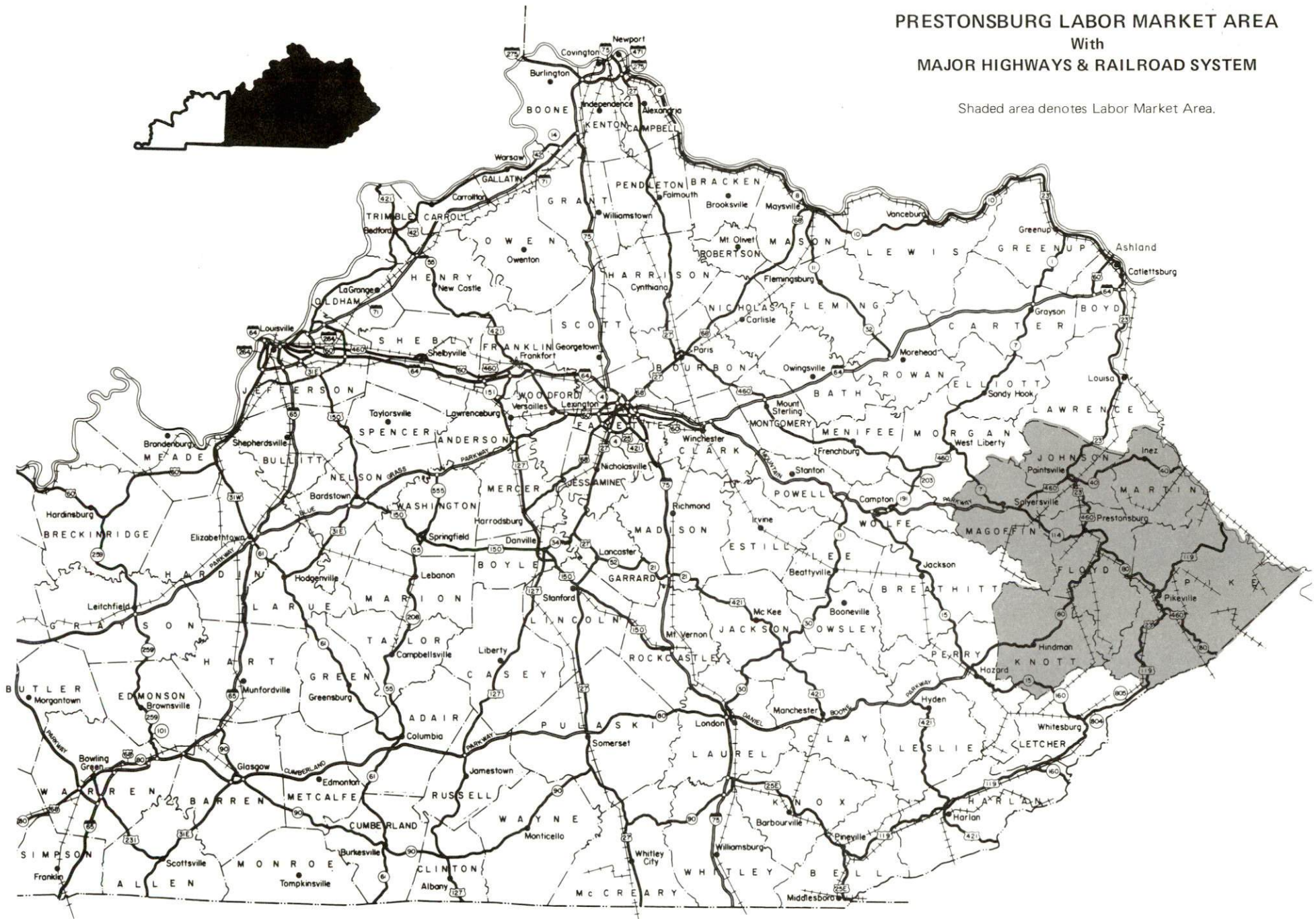
Transportation - Prestonsburg is served by U.S. 23/460 and Kentucky 114. The Mountain Parkway, twenty-two miles west, provides easy access to Interstate 64, ninety-eight miles northwest. Kentucky 80, four miles south of Prestonsburg provides access to the Daniel Boone Parkway, forty-six miles southwest. Nine trucking companies provide Prestonsburg with interstate and/or intrastate service. Rail service is provided to Prestonsburg by CSX Transportation. The Combs Airport, eight miles north of Prestonsburg, has a 3,200-foot paved runway. The Big Sandy Regional Airport, nineteen miles northeast of Prestonsburg, maintains a 5,000-foot paved runway. The nearest scheduled commercial airline service is available at the Tri-State Field near Huntington, West Virginia, seventy-three miles northeast of Prestonsburg.

Power and Fuel - Electric power is provided to Prestonsburg and Floyd County by Kentucky Power Company, an electric generation and transmission company. Floyd County is also provided electric power by the Big Sandy Rural Electric Cooperative Corporation, which is supplied by East Kentucky Power. Natural gas is provided locally by Prestonsburg City's Utilities which is supplied by Kentucky-West Virginia Gas Company.

Education - Primary and secondary education is provided to Prestonsburg and Floyd County by the Floyd County School System. One nonpublic school also serves Floyd County. Prestonsburg Community College, a unit of the University of Kentucky Community College System, offers associate degree programs and curricula for the first two years of a baccalaureate program. Morehead State University operates an extended campus in Prestonsburg. Two universities, three senior colleges, and three other community colleges are located within 80 miles of Prestonsburg. Prestonsburg is provided vocational training by Floyd County Area Vocational Education Center at Martin, 11 miles south of Prestonsburg, and by Mayo State Vocational-Technical School at Paintsville, 13 miles north of Prestonsburg.

PRESTONSBURG LABOR MARKET AREA With MAJOR HIGHWAYS & RAILROAD SYSTEM

Shaded area denotes Labor Market Area.



LABOR MARKET STATISTICS

The Prestonsburg Labor Market Area includes Floyd County and the adjoining Kentucky counties of Johnson, Knott, Magoffin, Martin and Pike.

POPULATION

	<u>1990</u>	<u>1980</u>	<u>1970</u>
Labor Market Area	182,926	199,699	149,005
Prestonsburg	3,595	4,011	3,422
Floyd County	43,586	48,764	35,889

Source: U.S. Department of Commerce, Bureau of the Census, January 1991.

POPULATION PROJECTIONS

	<u>1995</u>	<u>2000</u>	<u>2010</u>	<u>2020</u>
Labor Market Area	181,925	180,081	176,403	170,678
Floyd County	43,168	42,575	41,746	40,748

Note: Population projections are from Moderate Growth Series forecast.

Source: University of Louisville, Urban Studies Center, State Data Center.

ESTIMATED LABOR SUPPLY

	<u>Current</u>		<u>Future</u>	
	<u>Total</u>	<u>Unemployed</u>	<u>Not in Labor Force</u>	<u>Becoming 18 years of age 1994 thru 1998</u>
Labor Market Area*	35,572	6,361	29,211	16,183
Floyd County	7,286	1,437	5,849	3,787

* Additional workers may be drawn from other nearby counties.

Note: Unemployed - persons unemployed and actively seeking work; Not in Labor Force - represents the number of persons who would enter the labor force if suitable employment were available (based on the assumption that persons in Kentucky would like to participate in the labor force in the same proportion that they do nationally). Underemployed persons (employed only 14 to 26 weeks during the year) are no longer included in labor surplus estimates.

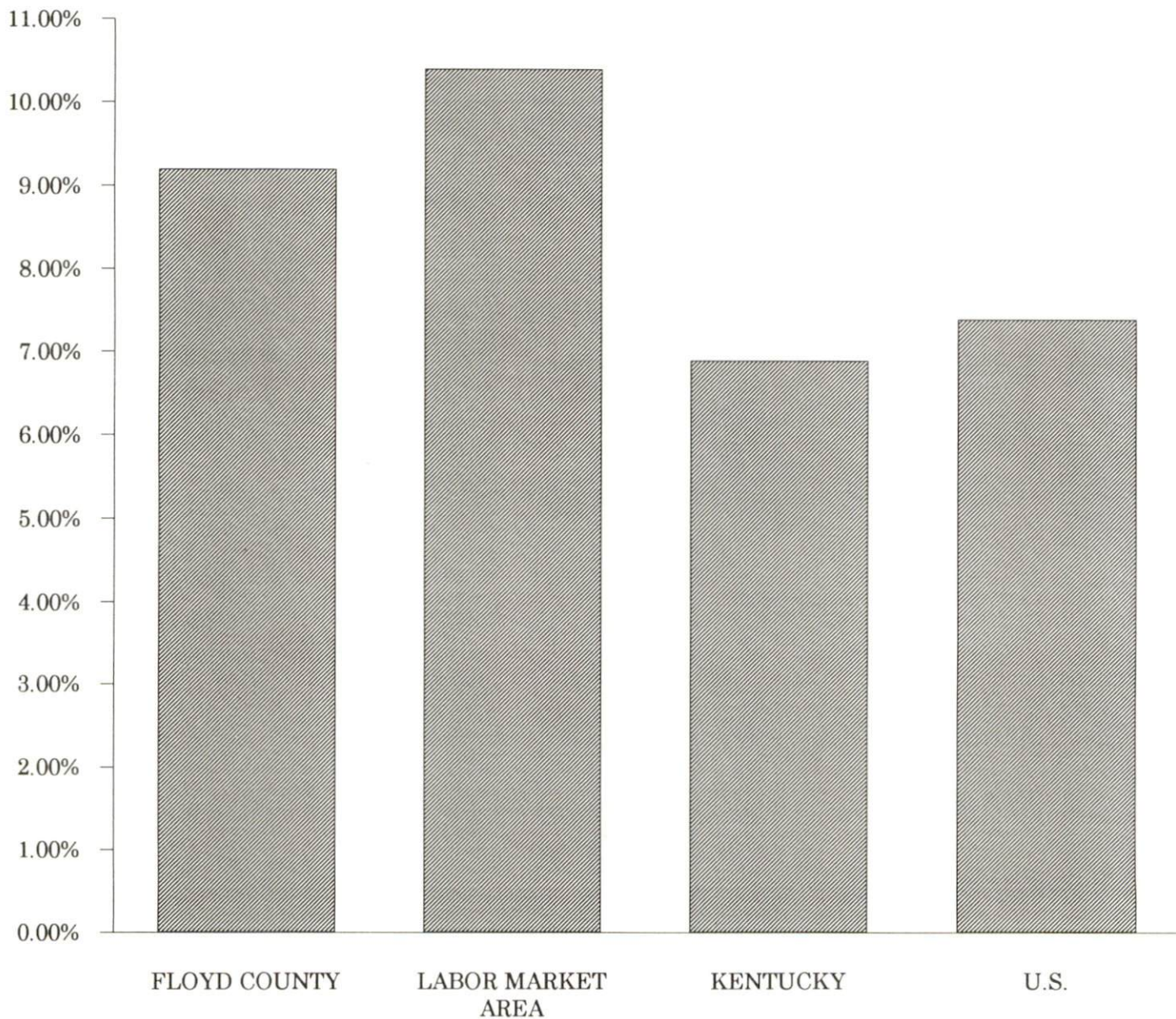
Sources: Kentucky Cabinet for Human Resources, Kentucky Labor Surplus Estimates by County, 1992. Kentucky Cabinet for Economic Development, Future Labor Supply Becoming 18 Years of Age, 1994 thru 1998.

LABOR FORCE CHARACTERISTICS OF RESIDENTS, 1992

	<u>Floyd County</u>	<u>Labor Market Area</u>
Civilian Labor Force	15,605	60,911
Employment	14,168	54,550
Unemployment	1,437	6,361
Rate of Unemployment (%)	9.2	10.4

Source: Kentucky Cabinet for Human Resources, Kentucky Labor Force Estimates, Annual Averages, 1992.

UNEMPLOYMENT RATES 1992

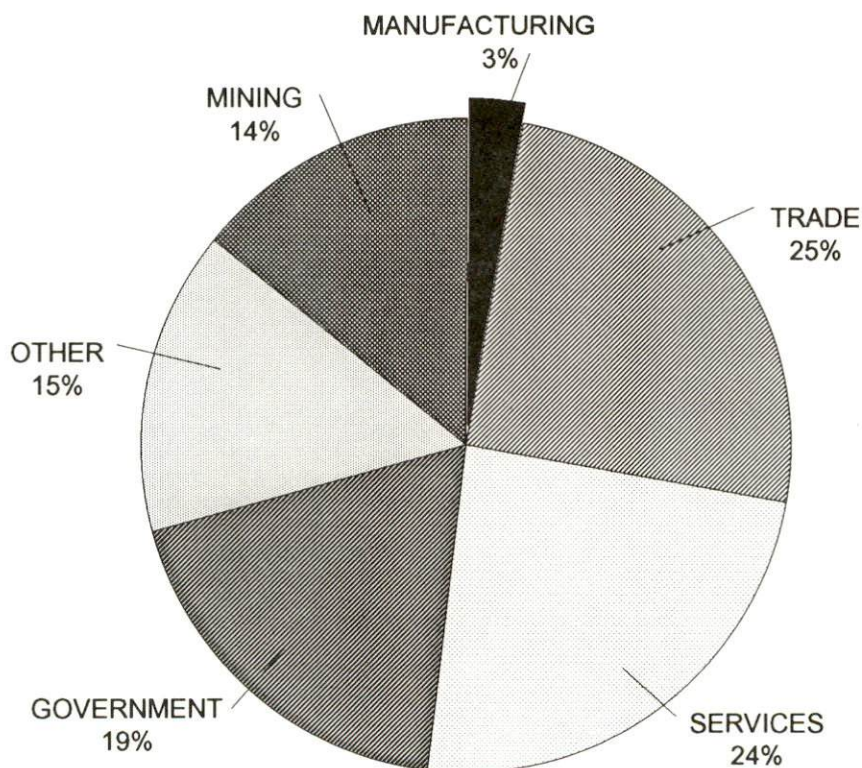


SELECTED COMPONENTS OF NONAGRICULTURAL EMPLOYMENT
BY PLACE OF WORK, 1992

	<u>Floyd County</u>	<u>Labor Market Area</u>
All Industries (total)	11,453	46,607
Manufacturing	328	925
Wholesale & Retail Trade	2,910	11,504
Services	2,758	8,892
State/Local Government	2,124	8,565
Mining & Quarrying	1,549	9,518

Note: Excludes domestic workers, railway workers, certain nonprofit corporations, majority of federal government workers, and self-employed workers.
Source: Kentucky Cabinet for Human Resources, Average Monthly Workers Covered by Kentucky Unemployment Insurance Law, 1992.

FLOYD COUNTY

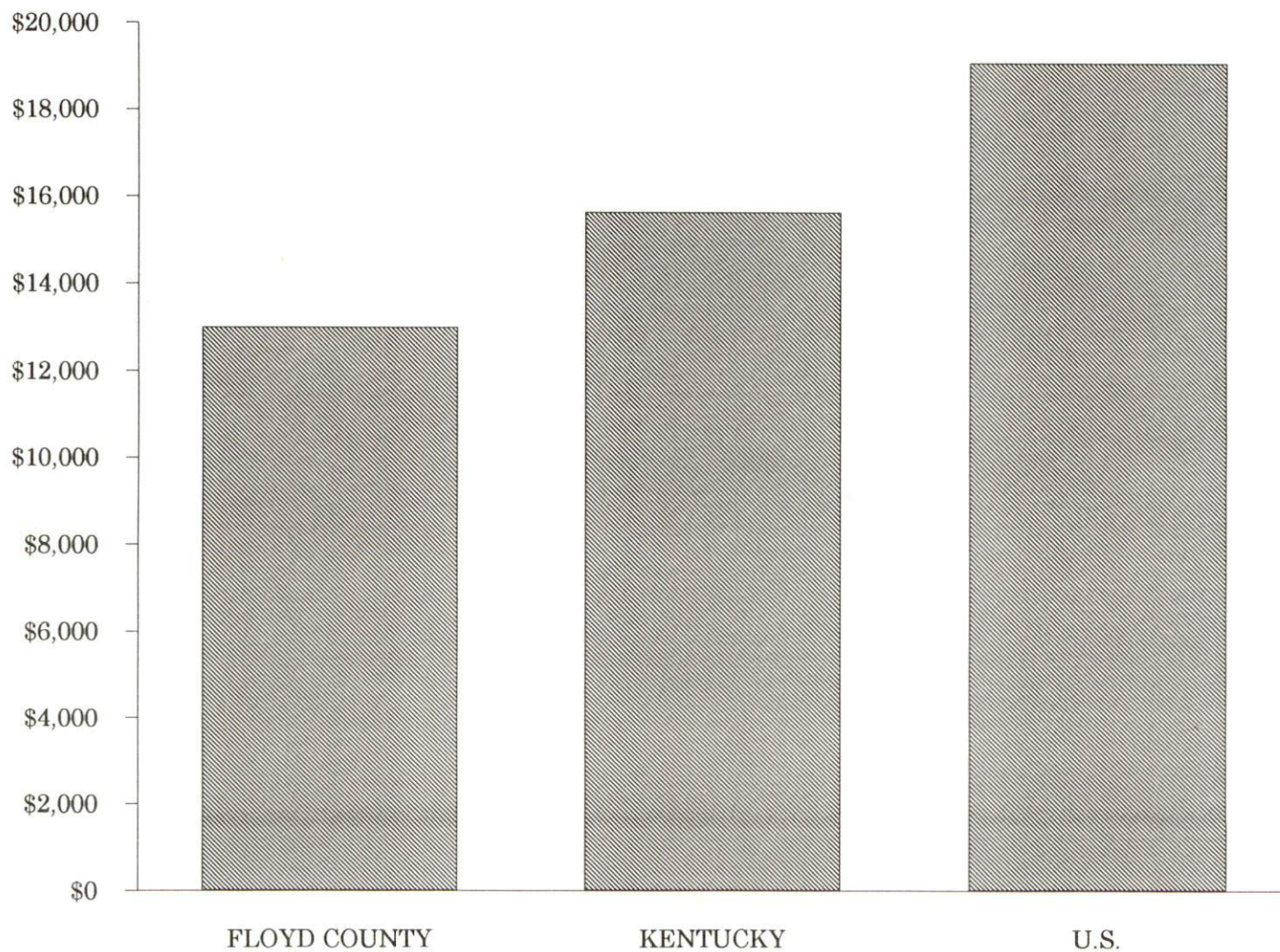


PER CAPITA PERSONAL INCOME

Area	1987	1991	Percent Change
Floyd County	\$10,030	\$12,995	29.6
Labor Market Area Range	\$7,467 - \$10,496	\$9,740 - \$13,972	-
Kentucky	\$12,216	\$15,626	27.9
U.S.	\$15,638	\$19,091	22.0

Source: U.S. Bureau of Economic Analysis, Regional Economic Information System, April 1993.

PER CAPITA PERSONAL INCOME
1991



AVERAGE PLACEMENT WAGES

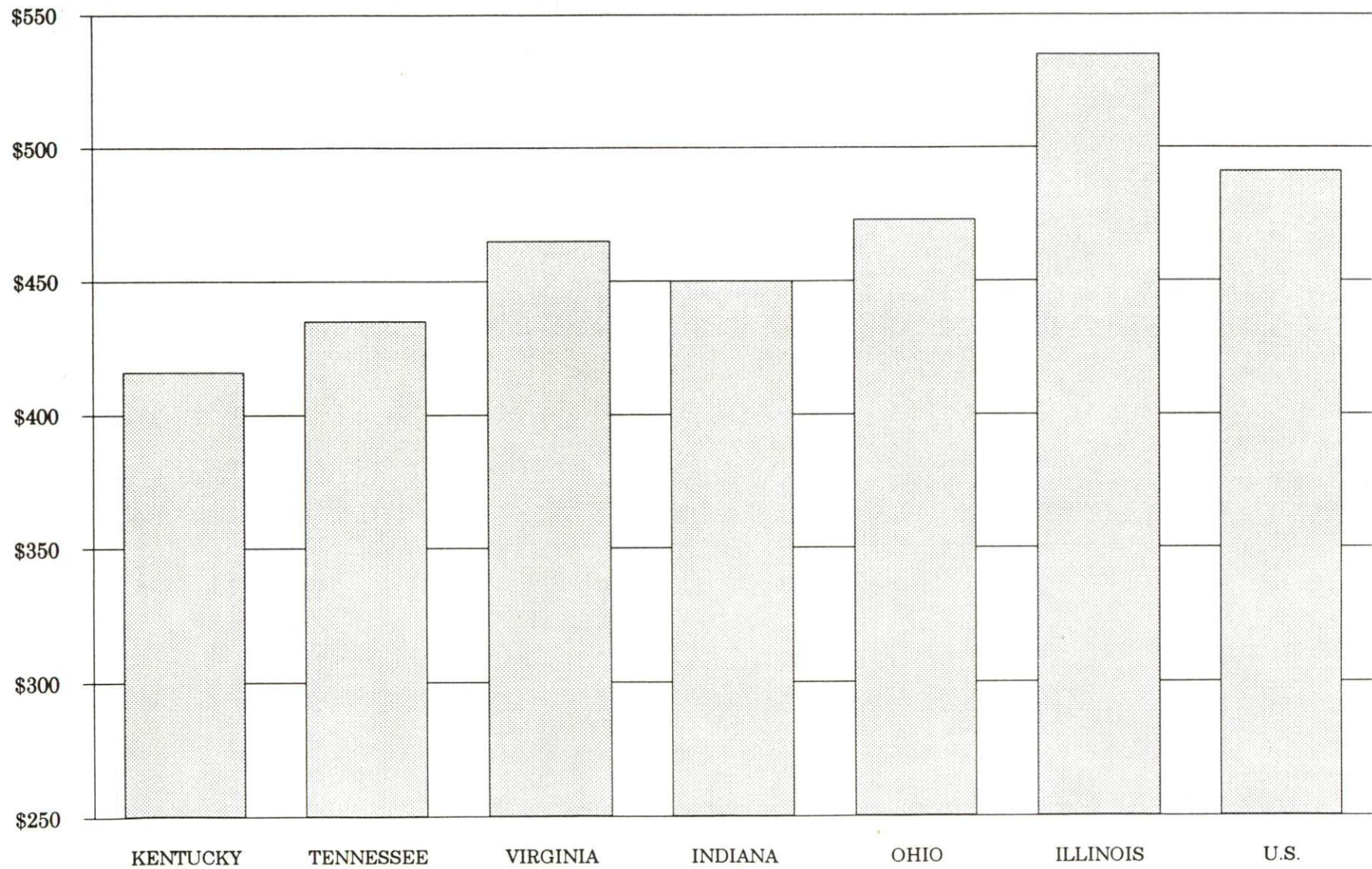
Floyd County is served by the Prestonsburg local office of the Kentucky Department for Employment Services. The focus of the following data is on job placements made by the Prestonsburg local office and may therefore be used as an indicator of the wages which employers in the area pay new employees. During the twelve months which ended on June 30, 1993, the local employment office filled 1,660 job openings in various occupational categories. The average hourly wage for selected occupational categories were:

<u>OCCUPATIONAL CATEGORY</u>	<u>NUMBER OF PLACEMENTS</u>	<u>AVERAGE WAGE(\$)</u>
All Occupations	1,660	5.04
Clerical	361	4.43
Sales	191	4.32
Services (excluding domestic)	617	4.33
Agricultural, Fishery, Forestry, etc.	18	5.35
Processing	1	4.25
Machine Trades	18	7.56
Bench Work	11	4.27
Structural	114	6.44
Motor Freight/ Transportation	57	5.72
Packaging and Materials Handling	129	4.41
Other	53	10.25

The Prestonsburg local office also serves Johnson, Magoffin, and Martin Counties. The above occupational categories are taken from the Dictionary of Occupational Titles published by the U.S. Department of Labor.

Source: Kentucky Cabinet for Human Resources, Department for Employment Services.

**AVERAGE WEEKLY WAGES OF WORKERS COVERED BY
UNEMPLOYMENT INSURANCE - 1992**



AVERAGE WEEKLY WAGES BY INDUSTRY
BY PLACE OF WORK, 1992*

	Floyd County	Kentucky (State- Wide)	Tennessee	Virginia
All Industries	\$392.23	\$415.94	\$435.00	\$465.00
Mining & Quarrying	585.52	685.48	564.00	690.00
Contract Construction	424.99	431.97	456.00	456.00
Manufacturing	321.84	535.73	510.00	535.00
Transportation, Communications & Public Utilities	490.77	560.84	561.00	637.00
Wholesale & Retail Trade	288.39	282.29	N/A	N/A
Finance, Insurance & Real Estate	398.20	493.68	548.00	576.00
Services	369.23	371.91	419.00	483.00
State/Local Government	393.02	434.01	N/A	N/A
	<u>Indiana</u>	<u>Ohio</u>	<u>Illinois</u>	<u>U. S.</u>
All Industries	\$450.00	\$473.00	\$535.00	\$491.00
Mining & Quarrying	731.00	639.00	787.00	799.00
Contract Construction	504.00	525.00	658.00	527.00
Manufacturing	609.00	653.00	652.00	612.00
Transportation, Communications & Public Utilities	548.00	590.00	674.00	632.00
Wholesale & Retail Trade	N/A	N/A	N/A	N/A
Finance, Insurance & Real Estate	511.00	545.00	728.00	670.00
Services	386.00	419.00	488.00	468.00
State/Local Government	N/A	N/A	N/A	N/A

* Wages for U.S. and surrounding states rounded to nearest dollar.

N/A Not Available.

Note: The average weekly wage for each category includes the salaries and wages of all persons working for that type business. For example, the manufacturing category includes both production workers and administrative personnel. Excludes domestic workers, railway workers, certain nonprofit corporations, majority of federal government workers, and self-employed workers.

Source: Kentucky Cabinet for Human Resources, Average Weekly Wages of Workers Covered by Kentucky Unemployment Insurance Law, 1992. U.S. Department of Labor, Bureau of Labor Statistics, Employment and Wages, Annual Averages, 1992, October 1993.

EXISTING INDUSTRY

FLOYD COUNTY MANUFACTURING FIRMS, THEIR PRODUCTS AND EMPLOYMENT

<u>Firm</u> <u>(Establishment date)</u>	<u>Product</u>	<u>1993</u> <u>Average Employment</u>
Prestonsburg		
Floyd County Newspapers, Inc. (1937)	Newspaper, printing	37
Inner Mountain Manufacturing Company (1986)	Mining equipment/personnel carriers	7
State Wide Press (1950)	Printing envelopes, business forms, letterhead commercial printing	4
Wells Ready Mix Concrete, Inc. (1958)	Ready-mixed concrete	8
Allen		
Hall Concrete Products Company (1945)	Precast concrete, concrete block	11
May Metal Products, Inc. (1977)	Truck bodies	30
Porter Industries, Inc. (1950)	Industrial battery chargers, belt conveyor systems, high voltage power distribution centers	14
R & S Truck Body Company, Inc. (1968)	Aluminum and steel dump trailers, steel fabrication, steel and aluminum truck bodies	150
Dwale		
Arrow Printing Company (1981)	Commercial printing	2
Hippo		
S & H Manufacturing Company (1975)	Mining scoops, tractors, backhoes	21

(Continued)

<u>Firm</u> <u>(Establishment date)</u>	<u>Product</u>	<u>1993</u> <u>Average Employment</u>
Ivel		
Unisign Corporation (1952)	Wood, metal and plastic signs	35
Martin		
Frasure Manufacturing Electric Service Company (1979)	Mining equipment	6
RND, Inc. (1993)	Low voltage outdoor lighting	8
Shirt Gallery (1982)	Screen printing	8
Warco Manufacturing Company, Inc. (1990)	Metal fabrication	5
West Prestonsburg		
ICI Explosives USA, Inc. (1965)	Explosives	70

Sources: Kentucky Cabinet for Economic Development, Division of Research; Floyd County Development Authority.

LABOR ORGANIZATIONS IN MANUFACTURING FIRMS

There are no labor unions representing workers in Floyd County manufacturing firms at the present time.

SELECTED INDUSTRIAL SERVICES

<u>Types of Services</u>	<u>Location</u>	<u>Mileage from Prestonsburg</u>
Custom Data Processing	Prestonsburg, Kentucky	-
Custom Plastics Producers	Wurtland, Kentucky	82
Electric Motor Repair	Pikeville, Kentucky	27
Heat Treating Facilities	Richmond, Kentucky	116
	Lexington, Kentucky	120
Industrial Waste Removal	Prestonsburg, Kentucky	-
Machine Shops, Tool & Die	Van Lear, Kentucky	9
Metal Castings	Cynthiana, Kentucky	128
Metal Finishers	Ashland, Kentucky	77
Metal Service Centers	Prestonsburg, Kentucky	-
Millwrights & Riggers	Lexington, Kentucky	120

Sources: Kentucky Cabinet for Economic Development, Division of Research.

TRANSPORTATION

Highways

Major highways serving Prestonsburg are U.S. 23/460 and Kentucky 114, both "AAA"-rated (80,000-pound gross load limit) trucking highways. Access to the Mountain Parkway is twenty-two miles west of Prestonsburg via Kentucky 114. The Mountain Parkway intersects with Interstate 64, ninety-eight miles northwest of Prestonsburg. Kentucky 80, four miles south of Prestonsburg, is a multilane highway which provides access to the Daniel Boone Parkway, forty-six miles southwest of Prestonsburg near Hazard. The Daniel Boone Parkway then provides access to Interstate 75, 105 miles southwest of Prestonsburg.

Improvements to U.S. 23 are currently being made between Prestonsburg and Paintsville. The thirteen-mile stretch of U.S. 23 will be converted to a four-lane trucking highway. Completion of the project is scheduled for early 1995.

HIGHWAY MILES FROM PRESTONSBURG, KENTUCKY, TO SELECTED MARKET CENTERS

City	Highway Miles	City	Highway Miles
Atlanta, GA	382	Los Angeles, CA	2,275
Baltimore, MD	486	Louisville, KY	190
Birmingham, AL	431	Nashville, TN	308
Chicago, IL	457	New Orleans, LA	796
Cincinnati, OH	163	New York, NY	671
Cleveland, OH	331	Pittsburgh, PA	317
Detroit, MI	373	St. Louis, MO	448
Knoxville, TN	188		

Note: Mileage computations are via the best interstate or primary highways, not necessarily the most direct route of travel.

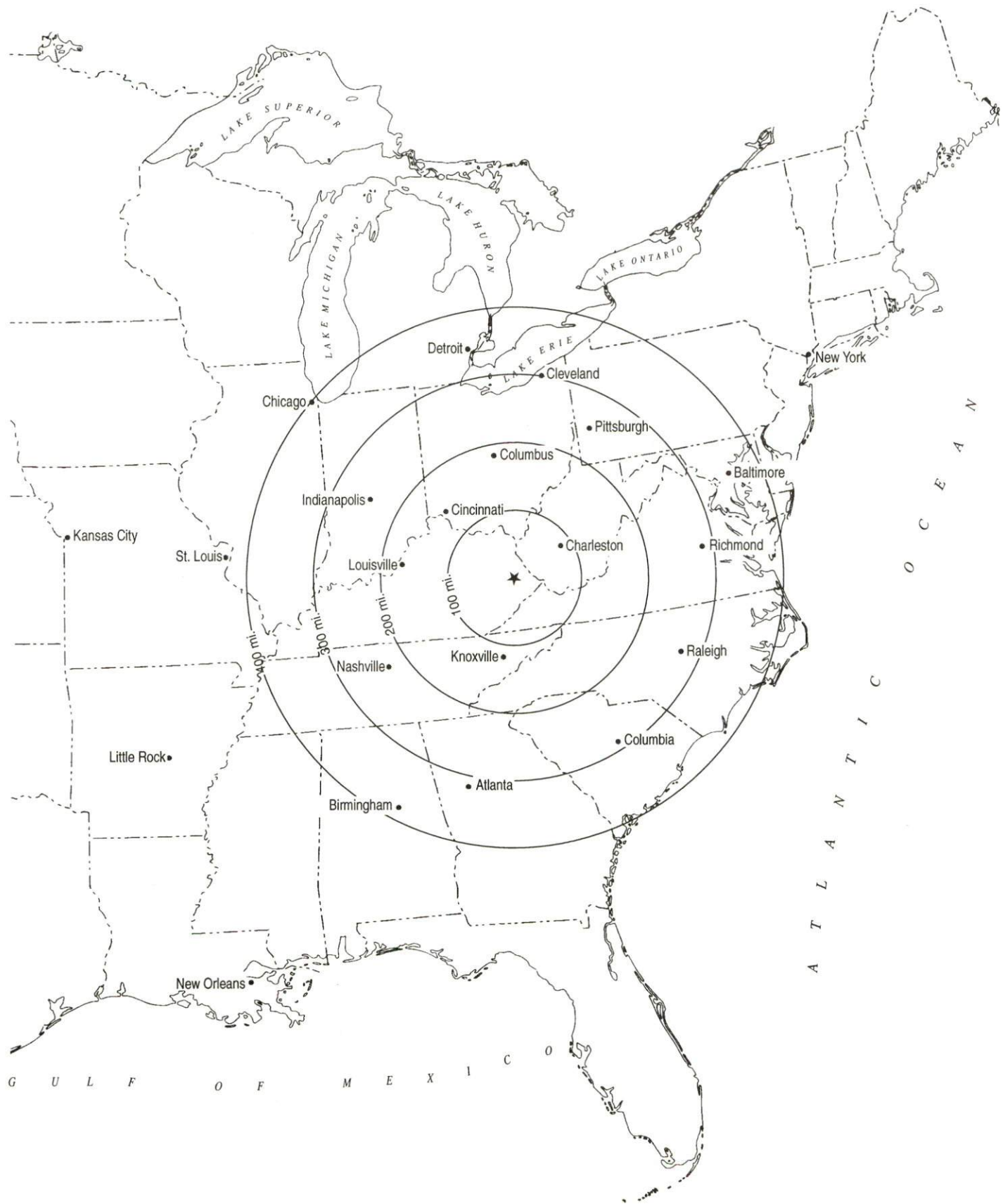
Sources: Rand McNally Standard Highway Mileage Guide, 1990. Official Kentucky Mileage Map, 1985.

Truck Service

Nine trucking companies provide interstate and/or intrastate trucking service to Prestonsburg.

Source: American Motor Carrier Directory, Spring 1994.

Selected Market Centers



Rail

CSX Transportation provides main line rail service to Prestonsburg. The nearest intermodal facilities are provided by Norfolk Southern Corporation at Georgetown, Kentucky, 128 miles northwest of Prestonsburg.

For details on routing, schedules, rates, and services contact:

Manager
Industrial Development
CSX Transportation
9420 Bunsen Parkway
Suite 212
Louisville, Kentucky 40220
(502) 499-3025

Air

Local

Location:	Combs Airport
Runways:	8 miles north of Prestonsburg
Length:	One paved
Traffic	3,200 feet
Control:	Unicom 122.8
Lighting:	None
Services:	100LL octane fuel, aircraft rental, flight instruction

Location:	Big Sandy Regional Airport
Runways:	19 miles northeast of Prestonsburg
Length:	One paved
Traffic	5,000 feet
Control:	Unicom 122.7
Lighting:	Rotating beacon, pilot control runway and taxi lights, PAPI
Services:	Jet-A, AV-Gas fuels; light mechanic work; flight instruction; rental cars; aircraft rental

Nearest Scheduled Commercial Airline Service

Location:	Tri-State Field (Walker-Long Field)
	3 miles southwest of Huntington, West Virginia;
	73 miles northeast of Prestonsburg
Air Service:	C.C. Air, ComAir, Northwest Airlink, USAir
Daily Arrivals & Departures:	48

UTILITIES

Electricity

Company serving Prestonsburg and most of Floyd County - Kentucky
Power Company

Source of power - Kentucky Power Company

For industrial rates contact:

Economic Development Manager
Kentucky Power Company
1701 Central Avenue
P.O. Box 1428
Ashland, Kentucky 41105-1428
(606) 327-1244 Fax (606) 327-1246

Company serving parts of Floyd County - Big Sandy Rural Electric
Cooperative Corporation

Source of power - East Kentucky Power

For industrial rates contact:

Industrial Development Department
East Kentucky Power
P.O. Box 707
Winchester, Kentucky 40392-0707
(606) 744-4812

and/or

Big Sandy Rural Electric Cooperative
Corporation
P.O. Box 8
Glyn View Plaza
Prestonsburg, Kentucky 41653
(606) 886-2987

Natural Gas

Company serving Prestonsburg - Prestonsburg City's Utilities Commission

Source of supply - Kentucky-West Virginia Gas Company and several
local suppliers

For rates and supplies contact:

Prestonsburg City's Utilities
Commission
2103 South Lake Drive
Prestonsburg, Kentucky 41653
(606) 886-6871

Public Water Supply

Company serving Prestonsburg - Prestonsburg City's Utilities
Commission
2103 South Lake Drive
Prestonsburg, Kentucky 41653
(606) 886-6871

Source - Levisa Fork of Big Sandy River
Treatment plant capacity - 5,000,000 gallons per day
Average daily consumption - 3,000,000 gallons
Peak daily consumption - 3,000,000 gallons
Storage capacity - 3,850,000 gallons
Water pressure - 72 psi to 125 psi

Prestonsburg City's Utilities Commission recently expanded its water treatment facilities from 3,000,000 gallons per day to 5,000,000 gallons per day.

Sewerage

Company serving Prestonsburg - Prestonsburg City's Utilities
Commission
2103 South Lake Drive
Prestonsburg, Kentucky 41653
(606) 886-6871

Design capacity - 1,000,000 gallons per day
Average daily flow - 500,000 gallons
Type of treatment - Secondary
Treated effluent discharged into - Levisa Fork of Big Sandy River

CLIMATE

Floyd County

Temperature

Normal (30-year record)	55.90 degrees
Average annual 1992	55.50 degrees
Record highest, July 1952 (47-year record)	102.00 degrees
Record lowest, January 1985 (47-year record)	-21.00 degrees
Normal heating degree days (30-year record)	4,356
(Heating degree day totals are the sums of negative departures of average daily temperatures from 65 degrees F.)	

Precipitation

Normal (30-year record)	41.24 inches
Mean annual snowfall (55-year record)	15.70 inches
Total precipitation 1992	38.72 inches
Mean number days precipitation (.01 inch or more) (47-year record)	133.40
Mean number days thunderstorms (49-year record)	43.00

Prevailing winds (through 1963)

Northeast

Relative Humidity (31-year record)

1 a.m.	81 percent
7 a.m.	86 percent
1 p.m.	57 percent
7 p.m.	63 percent

Source: U.S. Department of Commerce, Environmental Science Services Administration, Climatological Data, 1992. Station of record: Bristol, Johnson City, Kingsport, Tennessee.

LOCAL GOVERNMENT

Structure

Prestonsburg is served by a mayor, eight council members and a city administrator. Floyd County is served by a county judge/executive and four magistrates.

Planning and Zoning

City agency - Prestonsburg Planning and Zoning Commission

Zoning enforced - Yes

Subdivision regulations enforced - Within city limits and five miles beyond

Local codes enforced - Building and housing

Mandatory state codes enforced - Kentucky Plumbing Code, National Electric Code, Kentucky Boiler Regulations and Standards, Kentucky Building Code (modeled after BOCA code)

Local Fees and Licenses

The City of Prestonsburg levies an occupational license fee of 1 1/2% of gross salaries of individuals and 1 1/2% of net profits of businesses. A restaurant and motel tax of 3% of gross receipts is assessed with proceeds going directly to promote tourism and upgrade the city's parks.

PROPERTY TAXES

The Kentucky Constitution requires the state to tax all classes of taxable property, and state statutes allow local jurisdictions to tax only a few classes. All locally taxed property is subject to county taxes and school district taxes (either a county school district or an independent school district). Property located inside of city limits may also be subject to city property taxes.

Special local taxing jurisdictions (fire protection districts, watershed districts, and sanitation districts) levy taxes within their operating areas (usually a small portion of community or county).

Property assessments in Kentucky are at 100% fair cash value. Accounts receivable are taxed at 85% of face value.

STATE PROPERTY TAX RATES PER \$100 VALUATION

<u>Selected Classes of Property</u>	<u>1993 State Rate</u>	<u>Local Taxation Permitted</u>
Real Estate	\$0.180	YES
Manufacturing Machinery	0.150	NO
Pollution Control Equipment	0.150	NO
Inventories		
Raw Materials	0.050	NO
Goods in Process	0.050	NO
Finished Goods	0.050	YES
Motor Vehicles	0.450	YES
Other Tangible Personal Property	0.450	YES
Intangibles (Accounts Receivable, Money on Hand)	0.250	NO

LOCAL PROPERTY TAX RATES PER \$100 VALUATION, 1993

<u>Taxing Jurisdiction</u>	<u>Real Estate</u>	<u>Finished Goods & Tangibles</u>	<u>Motor Vehicles</u>
Floyd County	\$0.2180	\$0.2139	\$0.2607
School Districts:			
Floyd County	0.5990	0.6160	0.5540
Cities:			
Prestonsburg	0.2500	0.2500	0.2500
Allen	0.2300	0.2300	None
Martin	0.2200	0.2200	0.2200
Wayland	0.4900	0.4900	None
Wheelwright	0.3500	0.3500	0.3500
Other: (not county-wide)			
Eight Fire Districts	0.1000	0.1000	0.1000

EDUCATION

Public Schools

	Floyd County
Total Enrollment (Fall, 1992)	8,486
Pupil-Teacher Ratio (1991-92)	18.0-1
Percent High School Graduates to College (1991-92)	63.0
Expenditures Per Pupil (1991-92)	\$3,444.46

Nonpublic Schools

<u>School</u>	<u>Enrollment</u>	<u>Grades</u>
Mountain Christian Academy Elementary	152	PS-8

Area Colleges and Universities

<u>Name</u>	<u>Location (Miles distant)</u>	<u>Enrollment (Fall, 1992)</u>
Prestonsburg Community College	Prestonsburg, Kentucky	2,887
Pikeville College	Pikeville, Kentucky (27)	991
Alice Lloyd College	Pippa Passes, Kentucky (40)	579
Hazard Community College	Hazard, Kentucky (50)	1,695
Lees College	Jackson, Kentucky (63)	459
Ashland Community College	Ashland, Kentucky (77)	3,276
Marshall University	Huntington, West Virginia (78)	13,093
Morehead State University	Morehead, Kentucky (80)	9,169
Southeast Community College	Cumberland, Kentucky (80)	2,453

Prestonsburg Community College

Prestonsburg Community College, a unit of the University of Kentucky Community College System, offers courses leading to the Associate in Applied Science degree, the Associate in Arts degree and the Associate in Science degree. The Community College is charged with three specific functions: 1) to offer career-oriented programs designed to prepare students for immediate technical or semi-professional employment; 2) to offer curricula for the first two years of a baccalaureate program, which courses parallel University offerings and are transferable to the Lexington campus of the University of Kentucky or to another four-year institution either public or private; and 3) to provide general educational opportunities for citizens in its area.

Morehead State University - Big Sandy Extended Campus Center

Morehead State University began operating the Big Sandy Extended Campus Center in Prestonsburg in 1991. The Center maintains ten classrooms, a computer lab, a conference room, and office space for the Center's director, two full-time faculty members, MSU's regional nursing coordinator, the Big Sandy and Ashland Area students activities coordinator, and a Commonwealth Equal Opportunities Commission counselor.

The University offers upper division undergraduate classes leading to bachelors degrees in elementary education, nursing, and business, as well as several other classes in government, paralegal studies, English, history, social work, sociology, art, and mathematics. Also, graduate courses are available in education, business, history, and social work/sociology.

VOCATIONAL-TECHNICAL TRAINING

Kentucky Tech schools are operated by the Cabinet for Workforce Development and provide secondary (Sec) and postsecondary (P/S) vocational-technical training.

<u>Kentucky Tech Schools</u>	<u>Location (Mileage from Prestonsburg)</u>	<u>Number of Program Offerings</u>	<u>Cumulative Enrollment 1992-1993</u>	<u>Approximate Number Completing Programs Annually</u>
Floyd County (Garth) Area Vocational Education Center	Martin (11)	8	<u>Sec</u> 190	50
Mayo State Vocational- Technical School	Paintsville (13)	19	<u>Sec</u> <u>P/S</u> 101 776	258

Customized Training

The Kentucky Tech system, through its Training and Development Coordinators, will provide technical assistance and will identify and develop low cost customized training programs and services for both established and prospective businesses. Businesses wanting to establish a customized training program should simply contact a Training and Development Coordinator located on the campus of Mayo SVTS.

Assessment Services

Kentucky Tech Career Connections offers to business, education, and government agencies testing packages for evaluating job applicants, selecting employees for promotional consideration and developing training programs within the organization. A Career Connections Assessment Center is located on the campus of Mayo SVTS.

Tech Prep

Tech Prep is a combined secondary and postsecondary program of studies that leads to an associate degree or diploma in a vocational-technical field. In Prestonsburg, the Floyd County Board of Education is currently in the second year implementation for its tech prep program in Business Office and Home Economics.

Adult Education Services

Adult education programs are available to adults who want to develop new skills, improve basic skills or earn a high school equivalency diploma. In Prestonsburg, adult education and literacy programs are provided through the David School.

Bluegrass State Skills Corporation

The Bluegrass State Skills Corporation, an independent public corporation created and funded by the Kentucky General Assembly, provides programs of skills training to meet the needs of business and industry from entry level to advanced training, and from upgrading present employees to retraining experienced workers.

The Bluegrass State Skills Corporation is a major source for skills training assistance for a new or existing company. The Corporation works in partnership with other employment and job training resources and programs, as well as Kentucky's economic development activities, to package a program customized to meet the specific needs of a company.

OTHER LOCAL FACILITIES

Local Medical Personnel

Physicians - 53
Dentists - 17

Hospitals

<u>General Hospital</u>	<u>Location</u>	<u>Beds</u>
Highlands Regional Medical Center	5 miles north of Prestonsburg	184
Our Lady of the Way Hospital	Martin, 11 miles distant	39
McDowell Appalachian Regional Hospital	McDowell, 20 miles distant	60

Highlands Regional Medical Center

Medical staff - 34 active physicians; 28 courtesy physicians;
104 registered nurses; 61 licensed practical nurses

Our Lady of the Way Hospital

Medical staff - 12 active physicians; 28 courtesy physicians;
36 registered nurses; ten licensed practical nurses

McDowell Appalachian Regional Hospital

Medical staff - nine active physicians; four courtesy physicians;
26 registered nurses; 19 licensed practical nurses

Other Medical Facilities and Services

Floyd County Health Department
Archer Memorial Clinic
Mountain Comprehensive Care Center
Potter Medical Clinic
P & B Ambulance Service
Prestonsburg Rescue Squad
Floyd County Emergency and Rescue Squad
Big Sandy Health Care Services

Banks and Savings & Loan Associations

First Commonwealth
The Bank Josephine
United Federal Savings Bank
First Guaranty National Bank (Martin)

Newspapers

Floyd County Times (bi-weekly)

Telephone Service

South Central Bell
Harold Telephone (serves the Floyd County communities of Grethel, Harold, and Wheelwright)

RECREATION

Local

The 32-acre Archer Park provides numerous recreational opportunities to the citizens of Prestonsburg. Facilities include seven all-weather tennis courts, a skating rink, a basketball gymnasium with a stage for theatrical productions, a senior citizens center, three lighted baseball fields, an Olympic-size swimming pool, two fenced playgrounds, racquetball facilities, several camping spaces, a horse ring, and four shelters. Classes in gymnastics and square dancing are offered. A county fair and horse show are held at the park annually. A senior citizens recreational facility offers shuffleboard, horseshoes, croquet, and a hiking trail.

A county park at Allen, Kentucky, 4 miles south of Prestonsburg, includes a nine-hole golf course, tennis courts, baseball diamonds, a swimming pool, convention center, and a reception area.

Annual events held in Prestonsburg include the Kentucky Highland Folk Festival which is held the Friday, Saturday and Sunday after Labor Day; the Jenny Wiley Festival which is held the second week in October; the Old Christmas Party which is held the Sunday following the 6th of January; the FACES Festival (Family, Arts, Culture, and Education) which is held the week after the Kentucky Derby; a Labor Day "Day in the Park"; and an annual Fourth of July Celebration.

Jenny Wiley State Resort Park, near Prestonsburg, takes full advantage of its picturesque highland setting. The 1,700-acre park offers facilities and activities such as a lodge, a dining room, a gift shop, cottages, a lodge pool, recreation rooms, campsites, picnic areas, planned recreation, a playground, golf, hiking, sky lift, horseback riding, shuffleboard, fishing, and fishing boat and pedal boat rental. The Kentucky Opry presents weekly performances at the 250-seat Jenny Wiley Amphitheatre and Convention Center.

Two new attractions are nearing completion and should be operational in 1994 or early 1995. Mountain Racing, Inc. is currently constructing a \$6 million harness horse racetrack facility that includes a half-mile harness track, a 1,500-seat grandstand/convention facility, and related parimutuel betting facilities. Live harness horse racing will be held during July and August of each year. The facility will be used as a fairgrounds/convention center the remaining months. The Mountain Arts Center will be a \$6 million performing arts center featuring a 1,000-seat auditorium with musical, theatrical, and drama productions. It will be the permanent home for the area's renowned Kentucky Opry, a professional country music troupe made up of accomplished area musicians. It will also feature an educational component aimed at training young musicians in the areas of band, chorus, and individual musical talents.

Area (Within 80 miles)

Breaks Interstate Park
Natural Bridge State Resort Park
Red River Gorge
Buckhorn Lake State Resort Park
Grayson Lake State Park
Kingdom Come State Park
Yatesville Lake State Park

Kentucky

Cabinet For Economic Development

2300 Capital Plaza Tower, 500 Mero Street, Frankfort, KY 40601, 502 • 564 • 7140



Printed on recycled paper.