

1990

Industrial Resources - Franklin County - Frankfort

Kentucky Library Research Collections
Western Kentucky University, spcol@wku.edu

Follow this and additional works at: https://digitalcommons.wku.edu/franklin_pty



Part of the [Business Administration, Management, and Operations Commons](#), [Growth and Development Commons](#), and the [Infrastructure Commons](#)

Recommended Citation

Kentucky Library Research Collections, "Industrial Resources - Franklin County - Frankfort" (1990). *Franklin County*. Paper 5.
https://digitalcommons.wku.edu/franklin_pty/5

This Report is brought to you for free and open access by TopSCHOLAR®. It has been accepted for inclusion in Franklin County by an authorized administrator of TopSCHOLAR®. For more information, please contact topscholar@wku.edu.

Resources for Economic Development

Frankfort



KENTUCKY
Open for Business

RESOURCES FOR ECONOMIC DEVELOPMENT

FRANKFORT, KENTUCKY

Prepared by
The Kentucky Cabinet for Economic Development
Division of Research and Planning
in cooperation with
Frankfort-Franklin County Chamber of Commerce

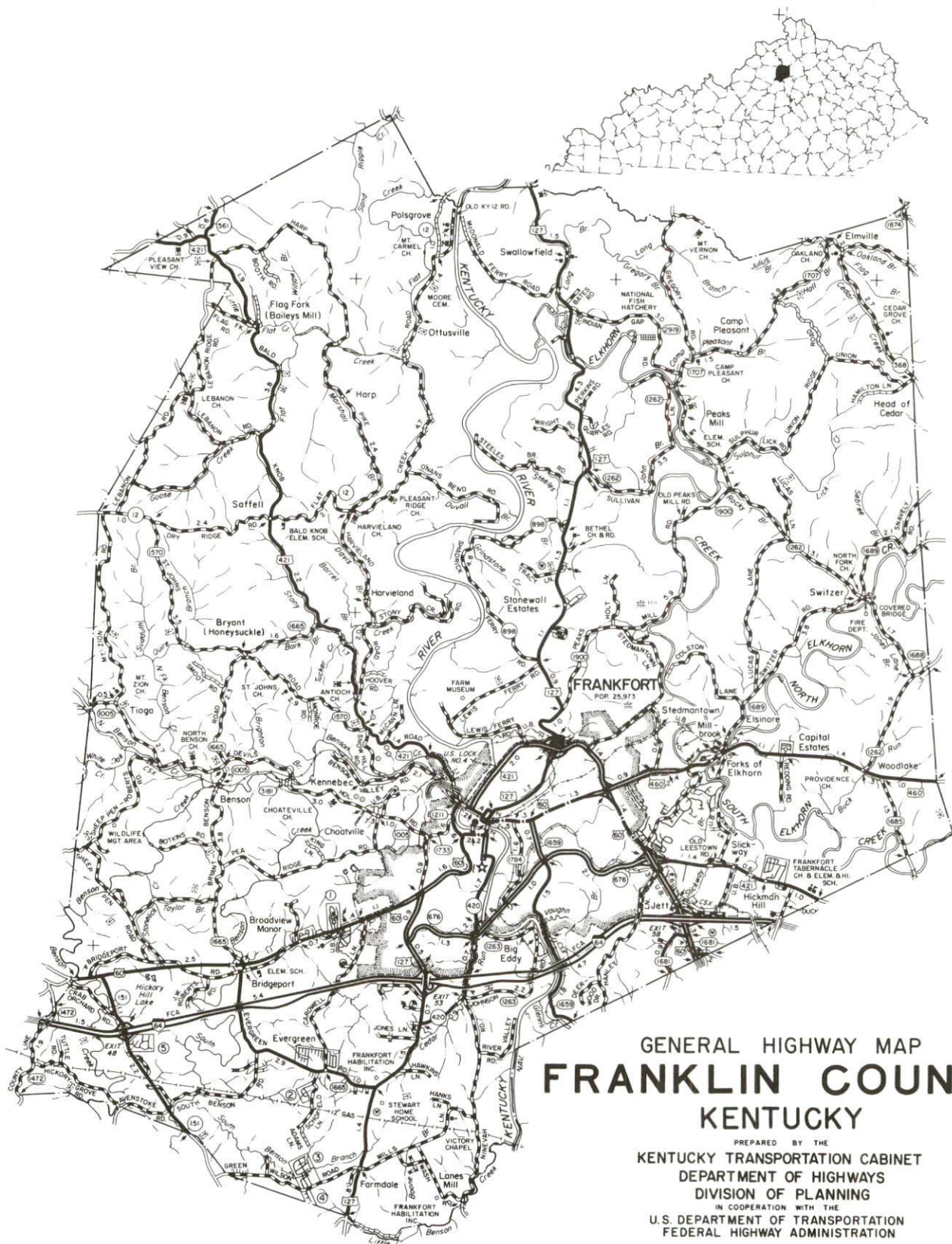
1990

Division Director - Pamela K. Riley; program coordinator - Keith Roberts; research - Jane Sullivan; clerical - Wanda Sharp; graphics - Robert Owens, Pat Coleman; cartography - Edwin Scott, Dave Clark. Cost of printing paid from state funds.

TABLE OF CONTENTS

<u>Chapter</u>	<u>Page</u>
FRANKFORT, KENTUCKY - A RESOURCE PROFILE	1
THE LABOR MARKET STATISTICS	2
Labor Market Area Map	2
Population	3
Population Projections	3
Estimated Labor Supply	3
Labor Force Characteristics of Residents, 1988	4
Selected Components of Nonagricultural Employment, by Place of Work, 1988	5
Per Capita Personal Income	6
Average Placement Wages	7
Average Weekly Wages of Workers Covered by Unemployment Insurance F.Y. 1987-88 - Bar Chart	8
Average Weekly Wages by Industry, by Place of Work, 1988	9
EXISTING INDUSTRY	10
Frankfort Manufacturing Firms, Their Products and Employment	10
Labor Organizations in Manufacturing Firms	12
Selected Industrial Services	13
TRANSPORTATION	14
Highways	14
Truck Service	14
Selected Market Location Map	15
Rail	16
Air	16
Water	16
UTILITIES	17
Electricity	17
Natural Gas	18
Public Water Supply	18
Sewerage	18
CLIMATE	19

<u>Chapter</u>	<u>Page</u>
LOCAL GOVERNMENT	20
Structure	20
Planning and Zoning	20
Local Fees and Licenses	20
State and Local Property Taxes	21
Combined State and Local Rates Per \$100 Valuation, 1989	21
EDUCATION	22
Public Schools	22
Nonpublic Schools	22
Area Colleges and Universities	22
Vocational Training	24
OTHER LOCAL FACILITIES	25
Local Medical Personnel	25
Hospitals	25
Other Medical Facilities and Services	25
Banks and Savings & Loan Associations	25
Newspapers	25
Telephone Service	25
RECREATION	26
COMMUNITY IMPROVEMENTS	28



GENERAL HIGHWAY MAP
FRANKLIN COUNTY
KENTUCKY

PREPARED BY THE
KENTUCKY TRANSPORTATION CABINET
DEPARTMENT OF HIGHWAYS
DIVISION OF PLANNING
IN COOPERATION WITH THE
U.S. DEPARTMENT OF TRANSPORTATION
FEDERAL HIGHWAY ADMINISTRATION



FRANKFORT, KENTUCKY - A RESOURCE PROFILE

Frankfort, the capital of Kentucky and home of Kentucky State University, is located in central Kentucky's Blue Grass Region. Frankfort is the county seat of Franklin County and is located 29 miles northwest of Lexington, 54 miles east of Louisville; and 93 miles southwest of Cincinnati, Ohio. In 1988 Frankfort had an estimated population of 27,350.

Franklin County, with a rolling to hilly terrain, has a land area of 212 square miles. The Kentucky River transverses through the center portion of the county, while Elkhorn Creek runs through eastern Franklin county. In 1988, Franklin County had an estimated population of 44,600.

The Economic Framework - The total number of Franklin County residents employed in 1988 averaged 22,963. Manufacturing firms in the county reported 4,194 employees; wholesale and retail trade provided 3,717 jobs; 2,966 people were employed in service occupations; state and local government accounted for 13,440 employees; contract construction firms provided 1,030 jobs.

Labor Supply - There is a current estimated labor supply of 12,338 persons available for industrial jobs in the labor market area. In addition, from 1990 through 1994, 10,416 young persons in the area will become 18 years of age and potentially available for industrial jobs.

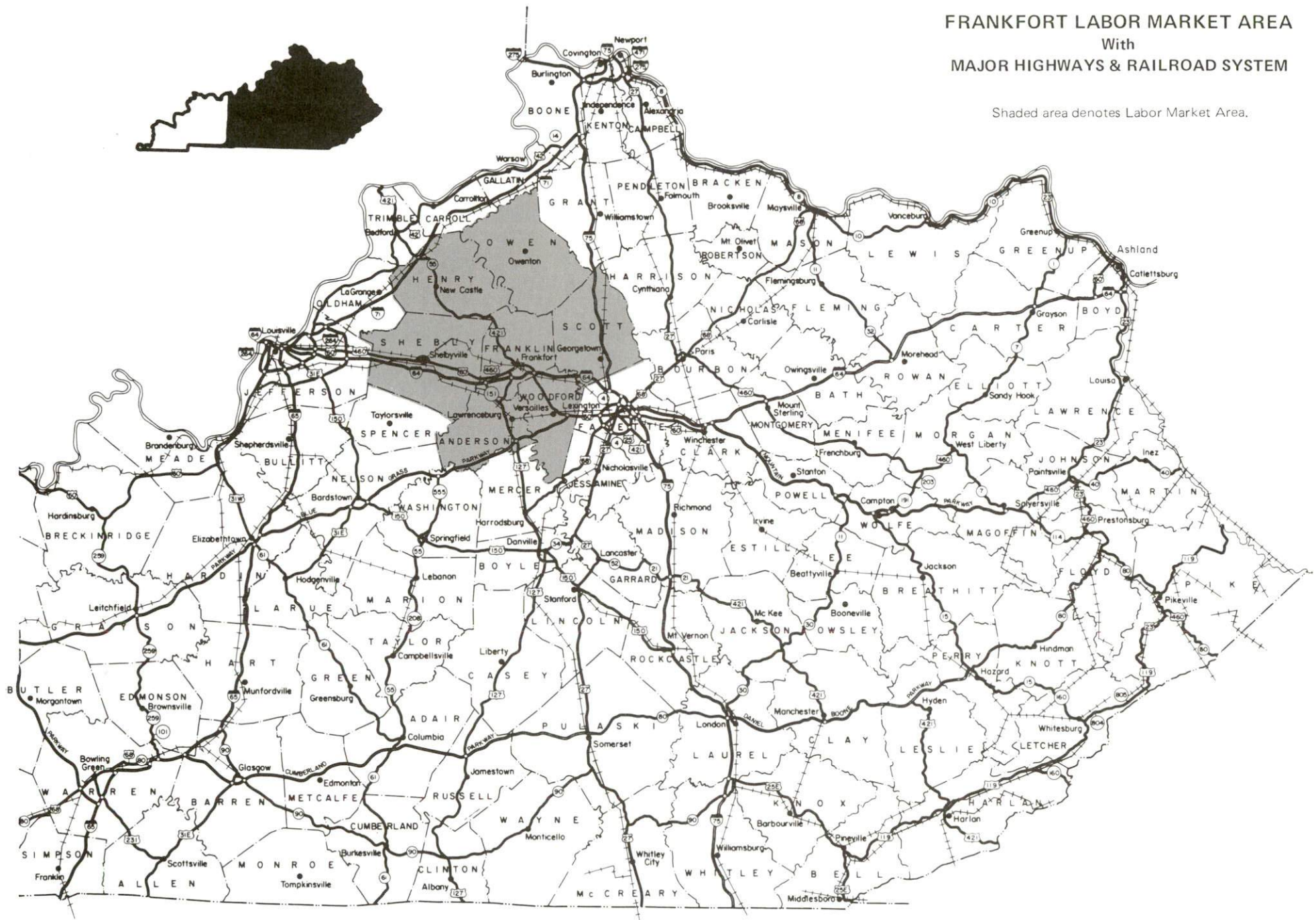
Transportation - Major highways serving Frankfort are Interstate 64; U.S. 421, U.S. 127, U.S. 460, and Kentucky Highway 676, all of which are "AAA-rated" highways. Thirty-six firms provide interstate and/or intrastate trucking service to Frankfort, while three trucking firms maintain terminals in Frankfort. Main line rail service is provided by CSX Transportation. The nearest scheduled commercial airline service is available at Blue Grass Airport, four miles west of Lexington and twenty-five miles southeast of Frankfort. The Capital City Airport, one mile west of Frankfort, maintains a 5,000-foot paved runway. Frankfort is located on the Kentucky River where a six-foot navigation channel is maintained.

Power and Fuel - The Frankfort Electric and Water Plant Board provides electric power, supplied by Kentucky Utilities Company, to Frankfort and portions of Franklin County. Franklin County is also served directly by Kentucky Utilities and by Fox Creek Rural Electric Cooperative Corporation, which is supplied by the East Kentucky Power Cooperation. Natural Gas is supplied to Frankfort by Columbia Gas of Kentucky, Inc.

Education - Primary and secondary education is provided by the Frankfort Independent School System and by the Franklin County School System. Both systems are accredited by the Southern Association of Colleges and Schools. There are four non-public schools in Franklin County. Kentucky State University, a small liberal studies - oriented institution of higher learning, offers programs leading to two-year associate degrees, four-year baccalaureate degrees and a masters program in public administration. There are thirteen additional colleges and universities within a 60 mile radius of Frankfort. Vocational training is provided by the Franklin County Area Vocational Education Center and the Central Kentucky State Vocational-Technical School, located in Lexington, 29 miles southeast of Frankfort.

FRANKFORT LABOR MARKET AREA With MAJOR HIGHWAYS & RAILROAD SYSTEM

Shaded area denotes Labor Market Area.



LABOR MARKET STATISTICS

The Frankfort Labor Market Area includes Franklin County and the adjoining Kentucky counties of Anderson, Henry, Owen, Scott, Shelby, and Woodford.

POPULATION			
	<u>1988*</u>	<u>1980</u>	<u>1970</u>
Labor Market Area	149,200	138,980	113,600
Frankfort	27,350	25,973	21,902
Franklin County	44,600	41,830	34,481

* Population estimates.

Sources: U.S. Department of Commerce, Bureau of the Census, October 1988.

POPULATION PROJECTIONS				
	<u>1995</u>	<u>2000</u>	<u>2010</u>	<u>2020</u>
Labor Market Area	159,831	165,349	173,287	177,723
Franklin County	44,747	44,994	44,689	43,279

Source: University of Louisville, Urban Studies Center, State Data Center.

ESTIMATED LABOR SUPPLY					
	Current			Future	
	<u>Total</u>	<u>Unemployed</u>	<u>Employed Part-Time</u>	<u>Not in Labor Force</u>	<u>Becoming 18 years of age 1990 thru 1994</u>
Labor Market Area*	12,338	4,304	6,433	1,601	10,416
Franklin County	3,251	1,379	1,872	-	3,093

* Additional workers may be drawn from other nearby counties.

Note: Unemployed - persons unemployed and actively seeking work; Employed Part-Time - persons employed but working only 14 to 26 weeks per year; Not in Labor Force - represents the number of persons who would enter the labor force if suitable employment were available (based on the assumption that persons in Kentucky would like to participate in the labor force in the same proportion that they do nationally).

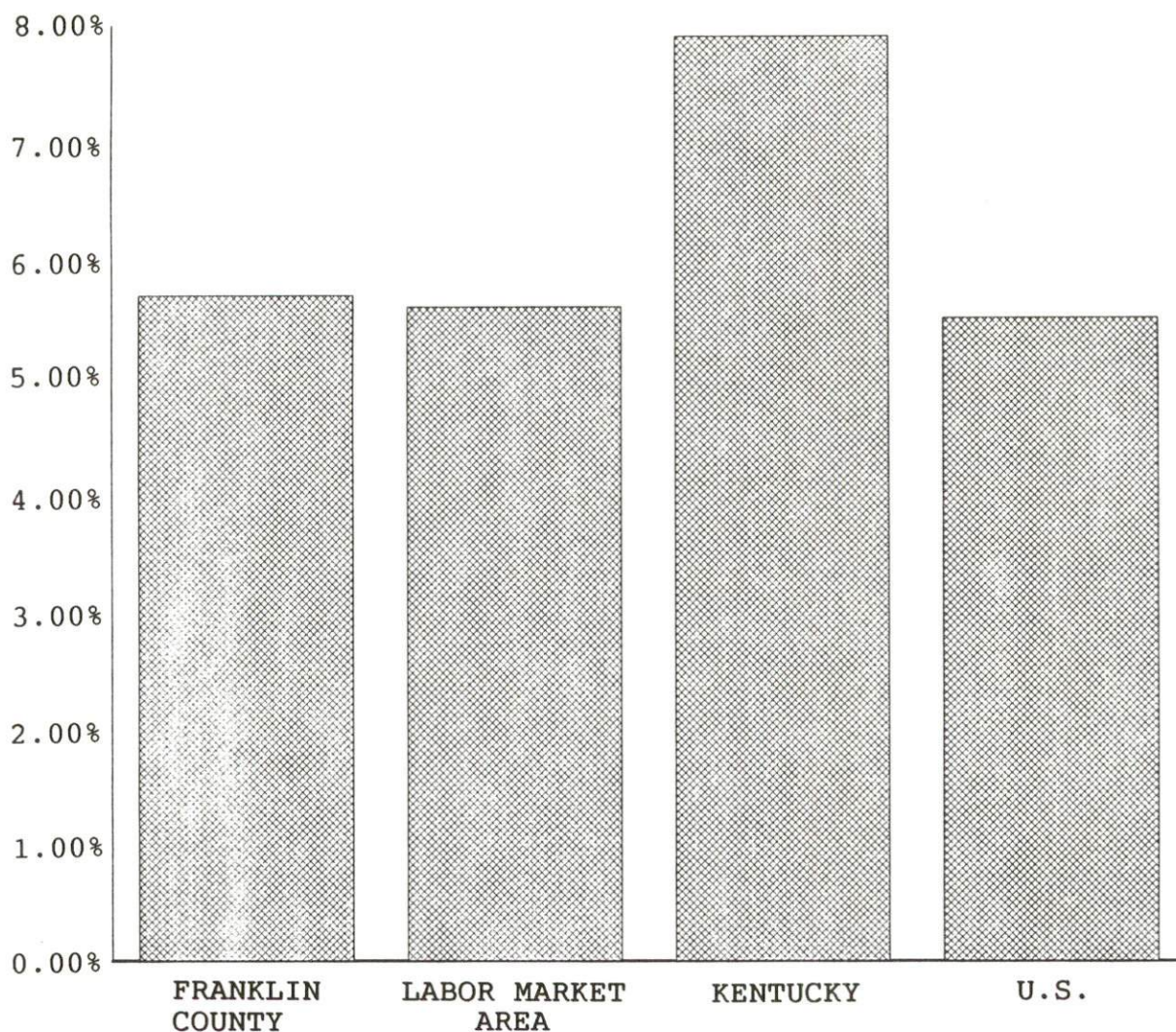
Sources: Kentucky Cabinet for Human Resources, Kentucky Labor Supply Estimates by County, 1988. Kentucky Cabinet for Economic Development, Future Labor Supply Becoming 18 Years of Age, 1990 thru 1994.

LABOR FORCE CHARACTERISTICS OF RESIDENTS, 1988

	Franklin County	Labor Market Area
Civilian Labor Force	24,342	76,564
Employment	22,963	72,260
Unemployment	1,379	4,304
Rate of Unemployment (%)	5.7	5.6

Source: Kentucky Cabinet for Human Resources, Kentucky Labor Force Estimates, Annual Averages, 1988.

UNEMPLOYMENT RATES 1988

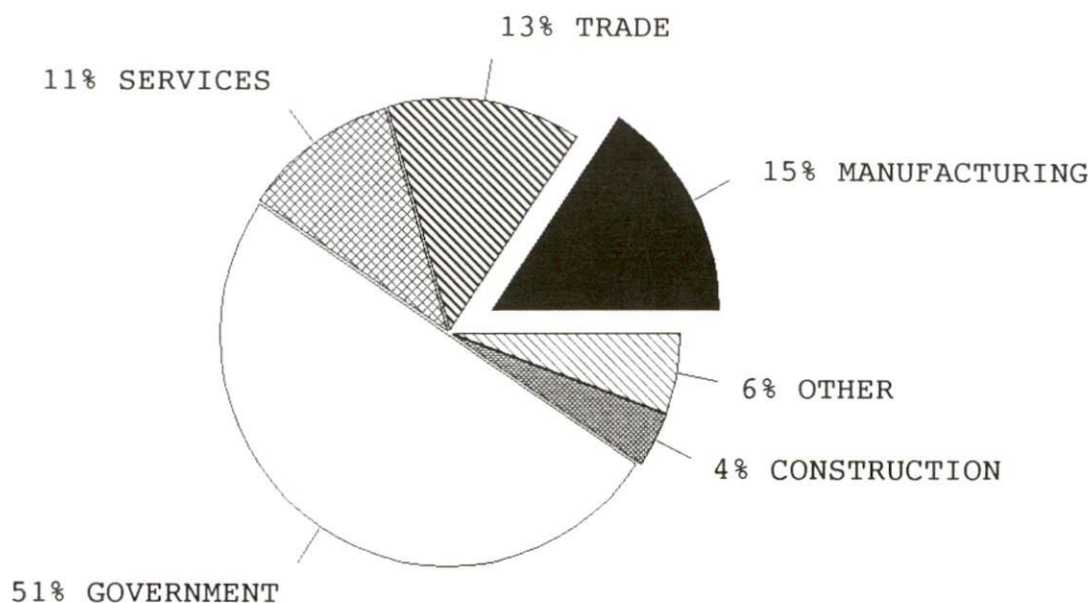


SELECTED COMPONENTS OF NONAGRICULTURAL EMPLOYMENT
BY PLACE OF WORK, 1988

	Franklin County	Labor Market Area
All Industries (total)	26,862	56,969
Manufacturing	4,194	15,341
Wholesale & Retail Trade	3,717	9,952
Services	2,966	7,211
State/Local Government	13,440	17,183
Contract Construction	1,030	2,429

Note: Excludes domestic workers, railway workers, certain nonprofit corporations, majority of federal government workers, and self-employed workers.
Source: Kentucky Cabinet for Human Resources, Average Monthly Workers Covered by Kentucky Unemployment Insurance Law, 1988.

FRANKLIN COUNTY

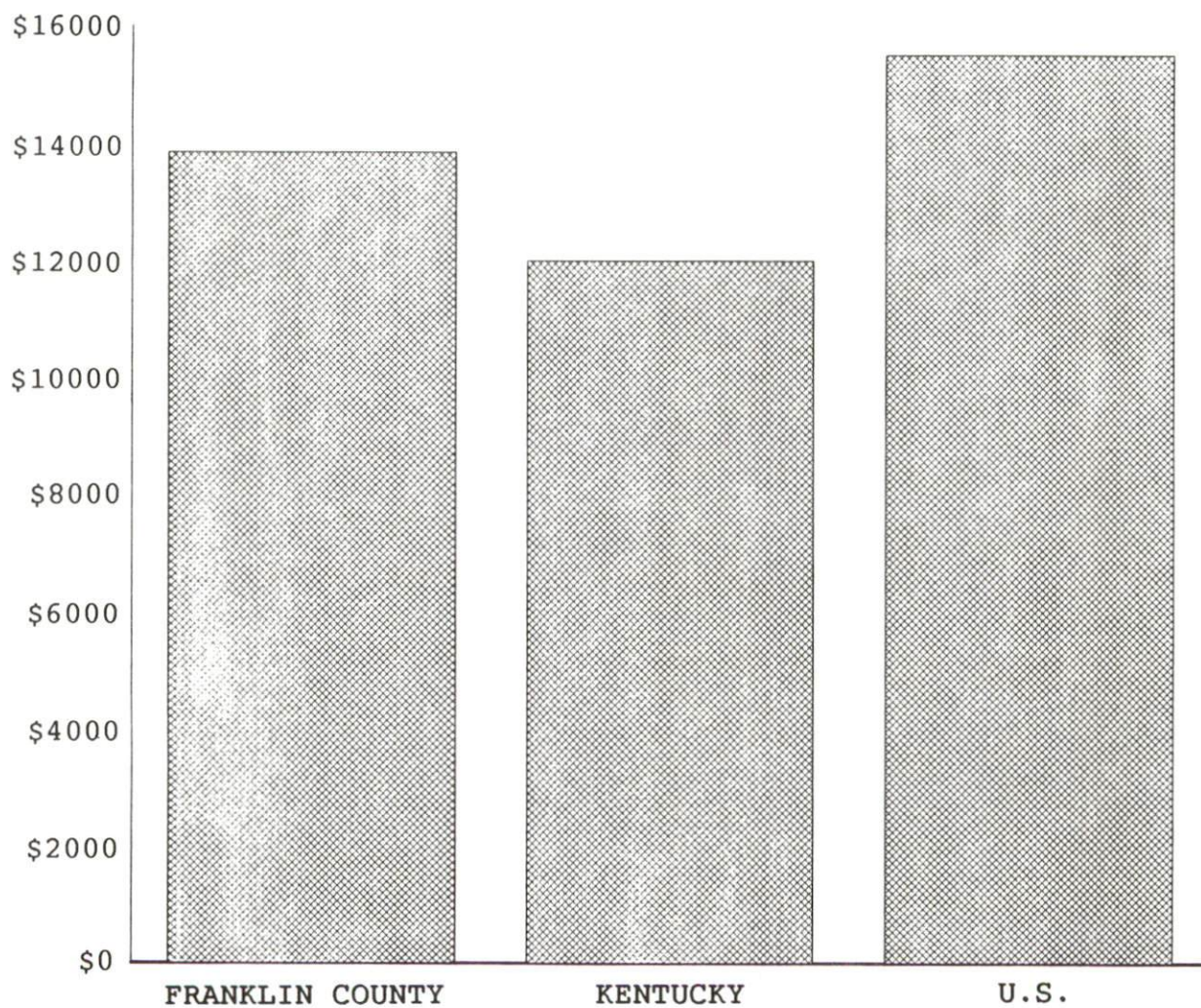


PER CAPITA PERSONAL INCOME

Area	1983	1987	Percent Change
Franklin County	\$10,923	\$13,837	26.7
Labor Market Area Range	\$6,769 - 17,336	\$8,627 - 20,299	-
Kentucky	\$9,513	\$11,997	26.1
U.S.	\$12,098	\$15,484	28.0

Sources: U.S. Bureau of Economic Analysis, Kentucky Economic Information System, August 1988 and April 1989.

PER CAPITA PERSONAL INCOME
1987



AVERAGE PLACEMENT WAGES

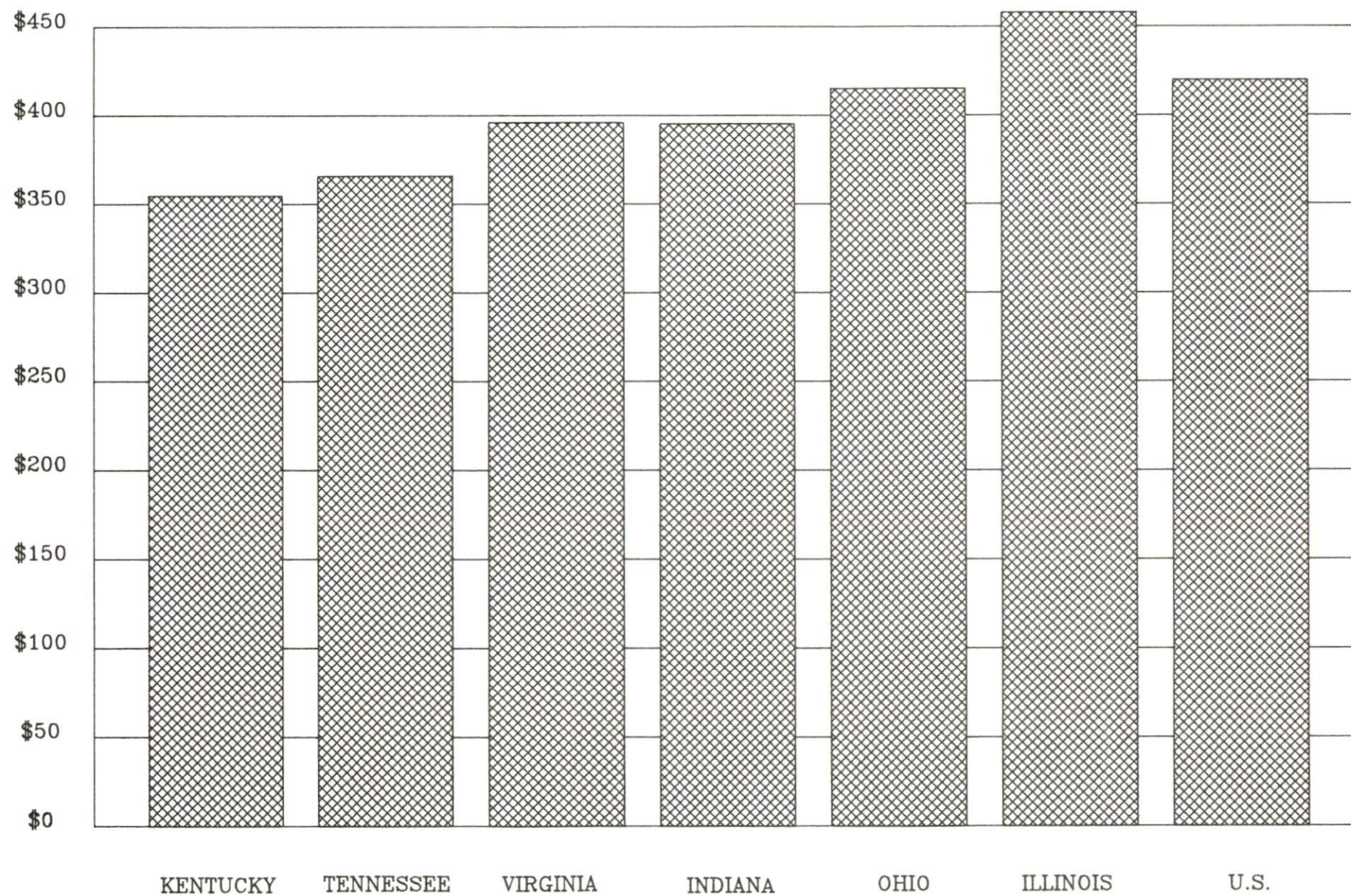
Franklin County is served by the Frankfort local office of the Kentucky Department for Employment Services. The focus of the following data is on job placements made by the Frankfort local office and may therefore be used as an indicator of the wages which employers in the area pay new employees. During the twelve months which ended on June 30, 1989, the local employment office filled 3,040 job openings in various occupational categories. The average hourly wage for selected occupational categories were:

<u>OCCUPATIONAL CATEGORY</u>	<u>NUMBER OF PLACEMENTS</u>	<u>AVERAGE WAGE(\$)</u>
All Occupations	3,040	5.10
Clerical	841	3.77
Sales	145	4.25
Services (excluding domestic)	543	4.44
Agricultural, Fishery, Forestry, etc.	34	3.76
Processing	121	8.32
Machine Trades	302	5.86
Bench Work	344	6.10
Structural	202	5.31
Motor Freight/ Transportation	133	6.82
Packaging and Materials Handling	244	5.16
Other	10	6.46

The Frankfort local office also serves Anderson and Woodford Counties. The above occupational categories are taken from the Dictionary of Occupational Titles published by the U.S. Department of Labor.

Source: Kentucky Cabinet for Human Resources, Department for Employment Services.

AVERAGE WEEKLY WAGES OF WORKERS COVERED BY
UNEMPLOYMENT INSURANCE F.Y. 1987-88



AVERAGE WEEKLY WAGES BY INDUSTRY
BY PLACE OF WORK, 1988

	Franklin County	Kentucky (State- Wide)	Tennessee	Virginia
All Industries	\$368.87	\$352.31	\$363.12	\$392.56
Mining & Quarrying	*	603.27	495.85	596.88
Contract Construction	396.37	380.71	394.27	422.27
Manufacturing	380.40	464.92	416.73	452.60
Transportation, Communications & Public Utilities	467.54	468.17	485.13	554.17
Wholesale & Retail Trade	200.71	238.88	N/A	N/A
Finance, Insurance & Real Estate	354.30	401.17	269.27	466.23
Services	279.75	298.98	343.48	391.67
State/Local Government	426.09	377.81	403.21	457.00
	<u>Indiana</u>	<u>Ohio</u>	<u>Illinois</u>	<u>U. S.</u>
All Industries	\$392.63	\$411.08	\$454.10	\$416.33
Mining & Quarrying	635.77	579.73	674.62	660.40
Contract Construction	449.87	465.46	584.10	469.85
Manufacturing	532.06	569.98	555.83	517.62
Transportation, Communications & Public Utilities	502.69	519.17	584.83	542.33
Wholesale & Retail Trade	N/A	N/A	N/A	N/A
Finance, Insurance & Real Estate	406.58	444.33	579.88	532.52
Services	317.98	348.48	402.38	384.31
State/Local Government	395.31	428.10	453.12	442.71

* Not Disclosed.

N/A Not Available.

Note: The average weekly wage for each category includes the salaries and wages of all persons working for that type business. For example, the manufacturing category includes both production workers and administrative personnel. Excludes domestic workers, railway workers, certain nonprofit corporations, majority of federal government workers, and self-employed workers.

Source: Kentucky Cabinet for Human Resources, Average Weekly Wages of Workers Covered by Kentucky Unemployment Insurance Law, 1988. U.S. Department of Labor, Bureau of Labor Statistics, Average Annual Pay by State and Industry, August 29, 1989.

EXISTING INDUSTRY

FRANKFORT MANUFACTURING FIRMS, THEIR PRODUCTS AND EMPLOYMENT

<u>Firm</u> <u>(Establishment date)</u>	<u>Product</u>	<u>1989</u> <u>Average Employment</u>
Aerobraze Corporation (1980)	Heat treating, brazing	20
Age International, Inc. (1869)	Packaged beverages, distilled products, distillers dried grain	175
Allied/Bendix Corporation (Heavy Vehicle Systems Group) (1967)	Air brake components	478
APL, Inc.	Book printing, magazine printing, offset printing	25
Jim Beam Brands Company/Old Crow Distilling Company (1835)	Whiskey	70
Jim Beam Brands Company/Old Grand Dad Distilling Company (1901)	Alcoholic beverages	270
Bottoms Engineering & Service, Inc. (1967)	Fabricated steel bridge grates, systems	8
Capital City Tool, Inc. (1973)	Dies & fixtures, machine shop	20
Frankfort Habilitation, Inc. (1972)	Pallets, wood furniture, plastic molded parts	100
Frankfort Materials Company (1964)	Bituminous concrete	7
Frankfort Publishing Company (1917)	Commercial printing, newspaper	40
Frankfort Tool & Die (1968)	Punch & press stamping, weldments, tools & dies fixtures	4
Fruit of the Loom, Inc. (1932)	Printed childrens underwear, mens' and boys' knit briefs & t-shirts	1,425
General Electric Company (1971)	Plastic parts & materials	300
Goins Printing Services, Inc. (1972)	Offset printing	3
Harrod Concrete & Stone Company (1970)	Crushed stone, agriculture lime, ready mixed concrete	130
Hulette Printing Company, Inc. (1962)	Commercial printing	5
Lee Masonry Products (1964)	Precast concrete products, concrete block	15

(Continued)

<u>Firm</u> <u>(Establishment date)</u>	<u>Product</u>	<u>1989</u> <u>Average Employment</u>
Lukjan Metal Products (1972)	Sheet metal fabrication	32
Lyons Lumber Company (1909)	Millwork	15
Ohi Atwood	Automotive window regulators, door latches, hinges, seatadjusters	225
Porritts & Spencer (1983)	Papermakers wet felts	75
Rebecca Ruth Candy, Inc. (1929)	Candy	16
Rodgers Concrete Company (1987)	Ready mixed concrete	18
Southern Moldings, Inc. (1974)	Automotive roll forming, wire products, metal stamping roll forming	250
Sta-Rite Heating & Specialty Products Group (1954)	Oil valves for heating industry, fuel pumps, neon & oil ignition transformers	170
Topy Corporation (1985)	Automobile wheels	88
Trig, Inc. (1963)	Electric range components, emissions control components, thermal temp control devices	150

Sources: Kentucky Cabinet for Economic Development, 1989 Kentucky Directory of Manufacturers; Division of Research and Planning.

LABOR ORGANIZATIONS IN MANUFACTURING FIRMS

<u>Union</u>	<u>Representing workers at:</u>
Distillery, Wine, and Allied Workers' International Union, AFL-CIO-CLC	Age International, Inc. Jim Beam Brands Co., Old Crow Distilling Company Jim Beam Brands Co., Old Grand Dad Distilling Company
International Brotherhood of Firemen and Oilers AFL-CIO	Age International, Inc. Jim Beam Brands Co., Old Crow Distilling Company Jim Beam Brands Co., Old Grand Dad Distilling Company
International Guards Union of America	Jim Beam Brands Co., Old Crow Distilling Company Jim Beam Brands Co., Old Grand Dad Distilling Company
International Union, Allied Industrial Workers of America, AFL-CIO	Allied/Bendix Corporation Sta-Rite Heating & Specialty Products
International Association of Machinists and Aerospace Workers AFL-CIO	Age International Allied/Bendix Corporation
United Association of Journeymen and Apprentices of the Plumbing and Pipe Fitting Industry of the United States and Canada AFL-CIO	Jim Beam Brands Co., Old Crow Distilling Company Jim Beam Brands Co., Old Grand Dad Distilling Company
United Steelworkers of America AFL-CIO	Harrod Concrete & Stone Company
International Brotherhood of Teamsters, Chauffeurs, Warehousemen, and Helpers of America AFL-CIO	Harrod Concrete & Stone Company

SELECTED INDUSTRIAL SERVICES

<u>Types of Services</u>	<u>Location</u>	<u>Mileage from Frankfort</u>
Custom Data Processing	Frankfort, Kentucky	-
Custom Plastics Producers	Georgetown, Kentucky	18
	Shelbyville, Kentucky	21
Electric Motor Repair	Lexington, Kentucky	29
Grinding, Precision & Tool	Georgetown, Kentucky	18
	Lexington, Kentucky	29
Heat Treating Facilities	Frankfort, Kentucky	-
Industrial Equipment & Supplies	Frankfort, Kentucky	-
Industrial Gases	Lexington, Kentucky	29
Industrial Waste Removal	Frankfort, Kentucky	-
Machine Shops, Tool & Die	Frankfort, Kentucky	-
Metal Castings	Cynthiana, Kentucky	37
Metal Finishers	Georgetown, Kentucky	18
	Lexington, Kentucky	29
Metal Service Centers	Lexington, Kentucky	29
Millwrights	Lexington, Kentucky	29
Public Warehouse Facilities	Frankfort, Kentucky	-

Sources: Kentucky Cabinet for Economic Development, Kentucky Directory of Selected Industrial Services, 1987; Division of Research and Planning.

TRANSPORTATION

Highways

Major "AAA"-rated (80,000-pound gross load limit) trucking highways serving Frankfort include Interstate 64, U.S. Highway 60, 127, 421, and 460; and Kentucky Highway 676 and a portion of 1659. Interstate 64, a major east-west corridor, passes through Frankfort with interchanges southeast and southwest of the downtown area, and connects with Interstate 75, 22 miles east of Frankfort near Lexington. The Blue Grass Parkway, a multi-lane toll road, is accessible 18 miles south of Frankfort via U.S. 127.

The Plaza Connector, a four lane section of highway 670, was recently completed. The \$30 million highway project extends from the intersection of U.S. 60 and U.S. 127 on the west side of Frankfort, to the intersection of U.S. 421, Mero Street, and Clinton Street. The reconstruction of Cedar Cove Hill, a section of U.S. 127 north, is currently under way. The project, which is scheduled to be completed by summer 1991, will straighten the road and add a truck lane.

HIGHWAY MILES FROM FRANKFORT, KENTUCKY, TO SELECTED MARKET CENTERS

City	Highway Miles	City	Highway Miles
Atlanta, GA	393	Los Angeles, CA	2,140
Baltimore MD	563	Louisville, KY	54
Birmingham, AL	414	Nashville, TN	227
Chicago, IL	341	New Orleans, LA	747
Cincinnati, OH	93	New York, NY	742
Cleveland, OH	347	Pittsburgh, PA	370
Detroit, MI	365	St. Louis, MO	312
Knoxville, TN	200		

Note: Mileage computations are via the best interstate or primary highways, not necessarily the most direct route of travel.

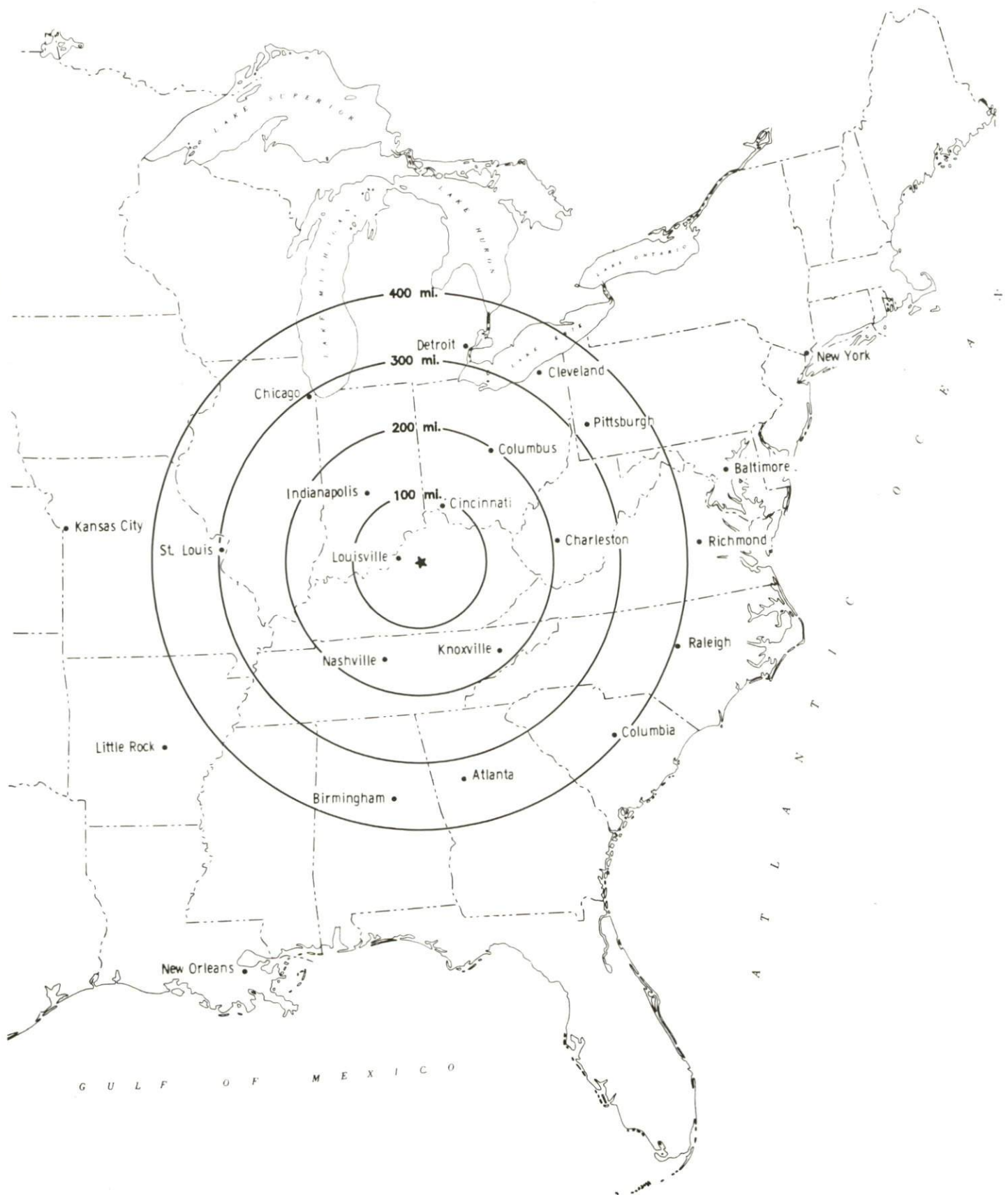
Sources: Rand McNally Deluxe Motor Carriers' Road Atlas, 1989. Official Kentucky Mileage Map, 1980.

Truck Service

Thirty-six firms provide trucking service to the Frankfort area. Three trucking companies maintain terminals in Frankfort.

Source: American Motor Carrier Directory, Spring 1990.

Selected Market Centers



Rail

CSX Transportation provides main line rail service to Frankfort. The nearest piggyback facility is provided by Southern Railway in Georgetown, 20 miles northeast of Frankfort.

For details on routing, schedules, rates, and services contact:

Mananger
Industrial Development
CSX Transportation
9420 Bunsen Parkway
Suite 212
Louisville, Kentucky 40220
(502) 499-3025

Air

	Capital City Airport
Location:	One mile west of Frankfort
Runway:	One paved
Length:	5,000 feet
Traffic	
Control:	Wind tee
Lighting:	Beacon, runway lights sundown to sunrise, REILS and VASI
Services:	100 octane, jet fuel, hangar,storage, auto rental, taxi

Nearest Scheduled Commercial Airline Service

	Bluegrass Airport
Location:	4 miles west of Lexington, Kentucky; 25 miles east of Frankfort
Air Service:	Delta, USAir, TWA, United Express, JetStream, Air Kentucky, American Eagle, ComAir
Daily Arrivals & Departures:	116

Water

A six-foot navigation channel is maintained on the Kentucky River at Frankfort. Frankfort is 54 miles from Louisville were the Louisville and Jefferson County Riverport and Port of Louisville operate on the Ohio River.

POWER AND FUEL

Electricity

Company serving Frankfort and south central portion of Franklin County - Frankfort Electric and Water Plant Board
Source of power - Kentucky Utilities Company
For industrial rates contact:

Frankfort Electric and Water Plant Board
315 West Second Street
P.O. Box 308
Frankfort, Kentucky 40602
(502) 223-3401

Company serving the eastern portion of Franklin County - Kentucky Utilities Company
Source of power - Kentucky Utilities Company
For industrial rates contact:

Industrial Development Department
Kentucky Utilities Company
One Quality Street
Lexington, Kentucky 40507
(606) 255-1461

Company serving the western portion of Franklin County - Fox Creek Rural Electric Cooperative Corporation
Source of power - East Kentucky Power Cooperative
For industrial rates contact:

Industrial Development Division
East Kentucky Power Cooperative
P. O. Box 707
Winchester, Kentucky 40391
(606) 744-4812

and/or

Fox Creek RECC
1200 Versailles Road
P.O. Box 150
Lawrenceburg, Kentucky 40342
(502) 839-3442 or (800) 372-7160

Natural Gas

Company serving Frankfort - Columbia Gas of Kentucky, Inc.
Source of supply - Columbia Gas Transmission Corporation and Southwest and Appalachian Producers
For rates and supplies contact:

Columbia Gas of Kentucky, Inc.
115 West Main Street
P.O. Box 429
Frankfort, Kentucky 40602
(502) 223-8237

Public Water Supply

Company serving Frankfort - Frankfort Electric & Water Plant Board
315 West Second Street
P.O. Box 308
Frankfort, Kentucky 40602
(502) 223-3401 or 875-4501

Source - Kentucky River	
Treatment plant capacity -	18,000,000 gallons per day
Average daily consumption -	6,500,000 gallons
Peak daily consumption -	12,000,000 gallons
Storage capacity -	13,200,000 gallons
Water pressure -	20 psi to 133 psi

The Frankfort Electric and Water Plant Board plans to construct a 3,000,000 gallon above ground storage tank in West Frankfort. They will also extend a 16-inch water line from Taylor Tot Road to Duckers Road (U.S. 421). Negotiations are underway to provide water to a portion of the city of Georgetown.

Sewerage

Company serving Frankfort - Frankfort Municipal Sewer Board
1200 Kentucky Avenue
Frankfort, Kentucky 40601
(502) 875-2448

Design capacity -	8.9 million gallons per day
Average daily flow -	4.5 million gallons
Type of treatment -	Secondary
Treated effluent discharged into -	Kentucky River

The Frankfort Municipal Sewer Board recently upgraded the capacity of the pump station at the Frankfort Industrial Park to 1,000 gallons per minute with potential for 1,500 gallons per minute. Gravity service was extended to the new industrial park addition.

CLIMATE

Franklin County

Temperature

Normal (30-year record)	54.90 degrees
Average annual 1988	54.90 degrees
Record highest, July 1988 (44-year record)	103.00 degrees
Record lowest, January 1963 (44-year record)	-21.00 degrees
Normal heating degree days (30-year record)	4,818
(Heating degree day totals are the sums of negative departures of average daily temperatures from 65 degrees F.)	

Precipitation

Normal (30-year record)	45.68 inches
Mean annual snowfall (44-year record)	16.20 inches
Total precipitation 1988	38.90 inches
Mean number days precipitation (.01 inch or more) (44-year record)	129.50
Mean number days thunderstorms (44-year record)	45.30

Prevailing winds (through 1963)

South

Relative Humidity (25-year record)

1 a.m.	77 percent
7 a.m.	81 percent
1 p.m.	60 percent
7 p.m.	64 percent

Source: U.S. Department of Commerce, Environmental Science Services Administration, Climatological Data, 1988. Station of record: Lexington, Kentucky.

LOCAL GOVERNMENT

Structure

Frankfort municipal government consist of a mayor, who serves a four-year term and four commissioners, who serve two-year terms. Franklin County is served by a county judge/executive and six magistrates, each serving a four-year term.

Planning and Zoning

Joint agency - Frankfort - Franklin County Planning Commission
Participating cities - Frankfort
Zoning enforced - All areas
Subdivision regulations enforced - All areas
Local codes enforced - Building (County-wide) Housing (City only)
Mandatory state codes enforced - Kentucky Plumbing code, National Electric Code, Kentucky Boiler Regulations and Standards, Kentucky Building Code (modeled after BOCA code)

Local Fees and Licenses

The city of Frankfort and Franklin County each levy an occupational license fee of one percent of all salaries, wages, commissions and other compensation earned by individuals in the city and county for work done or services rendered, and one percent of the net profits of all businesses, professions or other activities conducted in both the city and the county. Regulatory license fees for most business range from \$10 to \$500 annually within the city of Frankfort.

State and Local Property Taxes

All property in Kentucky, except items exempted by the state constitution, is taxed by the state. Property which also may be taxed by local jurisdictions includes land and buildings, finished goods inventories, automobiles, trucks, office furniture and office equipment. Local taxing jurisdictions in Kentucky include counties, cities, and school districts.

All property in Kentucky is assessed at 100 percent of fair cash value.

COMBINED STATE AND LOCAL RATES PER \$100 VALUATION, 1989

	<u>Frankfort/ Frankfort Independent School District</u>	<u>Frankfort/ Franklin County School District</u>	<u>Unincorporated Franklin County</u>
Land and Buildings	0.951	0.876	0.649
Manufacturing			
Machinery	0.150	0.150	0.150
Pollution Control			
Equipment	0.150	0.150	0.150
Inventories			
Raw Materials	0.001	0.001	0.001
Goods in Process	0.001	0.001	0.001
Finished Goods	.771	0.696	0.469
Automobiles & Trucks	1.252	1.175	0.925
Other Tangible			
Personal Property	1.220	1.145	0.918
Intangibles (Accounts receivable*, money in hand, stock, notes, bonds)	0.250	0.250	0.250
Goods Stored in Public Warehouses in Transit Status	0.001	0.001	0.001
Private Leaseholds in Industrial Revenue Bond Financed Facilities	0.015	0.015	0.015

* Accounts receivable are taxed at 85 percent of face value, for an effective rate of \$0.2125 per \$100 valuation.

EDUCATION

Public Schools

	<u>Frankfort Independent</u>	<u>Franklin County</u>
Total Enrollment (Fall, 1989)	840	6,218
Pupil-Teacher Ratio (1988-89)	15.4-1	18.4-1
Percent High School Graduates to College (1988-89)	47.1	54.7
Expenditures Per Pupil (1988-89)	\$3,506.13	\$2,604.86

Nonpublic Schools

<u>School</u>	<u>Enrollment</u>	<u>Grades</u>
Good Shepherd	292	K-8
Capital Day	160	K-8
Montessori School	36	K-5
Tabernacle Christian	36	K-12

Area Colleges and Universities

<u>Name</u>	<u>Location (Miles distant)</u>	<u>Enrollment (Fall, 1989)</u>
Kentucky State University	Frankfort	2,190
Midway College	Midway (12)	524
Georgetown College	Georgetown (18)	1,562
Lexington Community College	Lexington (29)	3,928
Transylvania University	Lexington (29)	1,076
University of Kentucky	Lexington (29)	22,957
Asbury College	Wilmore (35)	1,076
Centre College	Danville (42)	857
Saint Catharine College	Springfield (50)	242
Eastern Kentucky University	Richmond (52)	14,268
Bellarmino College	Louisville (54)	3,724
Jefferson Community College	Louisville (54)	9,039
Spalding University	Louisville (54)	1,112
University of Louisville	Louisville (54)	23,182

Kentucky State University

Kentucky State University, located in Frankfort, is Kentucky's unique, small liberal studies-oriented institution of higher learning. The university offers academic programs leading to two-year associate degrees, four-year baccalaureate degrees and the masters degree in public administration. KSU provides pre-professional instruction, and Kentucky dentistry, medical, and law schools reserve a percentage of their commissions for for KSU graduates. The first phase of a five-year engineering degree program is also offered in cooperation with the University of Kentucky, Vanderbilt University, the University of Maryland-College Park, and Florida A & M University. The Whitney Young College of Leadership Studies at KSU offers a unique program of study based upon the Great Books of the Western World. A continuing education program, evening and off-campus classes, credit for KET college telecourses, and other specialized programs are offered through the university's Community College to meet the varied needs and interests of the area. The university is the home of the Governmental Services Center, which develops, coordinates, and implements state government worker training programs.

The university's Interinstitutional Graduate Center is a multi-institutional unit through which graduate-level courses and programs are offered by other institutions. The Community Research Service conducts U.S. Department of Agriculture-sponsored research in aquaculture and natural resources, human nutrition and home economics, plant and soil science, rural development and sociology, and agricultural marketing. The Cooperative Extension Program provides assistance to limited-resource farmers, homemakers, families, youth and communities in Franklin and 29 other Kentucky counties. A recent addition to the university's public service efforts is the Center of Excellence for Quality. The center sponsors seminars and forums and other educational activities designed to assist public and private enterprise with developing quality services and products.

Vocational Training

Vocational training is available at both the state vocational-technical schools and the area vocational education centers. The state vocational-technical schools are post-secondary institutions. The area vocational education centers are designed to supplement the curriculum of high school students. Both the state vocational-technical schools and the area vocational education centers offer evening courses to enable working adults to upgrade current job skills.

Arrangements can be made to provide training in the specific production skills required by an industrial plant. Instruction may be conducted either in the vocational school or in the industrial plant, depending upon the desired arrangement and the availability of special equipment.

Bluegrass State Skills Corporation

The Bluegrass State Skills Corporation, an independent public corporation created and funded by the Kentucky General Assembly, provides programs of skills training to meet the needs of business and industry from entry level to advanced training, and from upgrading present employees to retraining experienced workers.

The Bluegrass State Skills Corporation is the primary source for skills training assistance for a new or existing company. The Corporation works in partnership with other employment and job training resources and programs, as well as Kentucky's economic development activities, to package a program customized to meet the specific needs of a company.

<u>Vocational School</u>	<u>Location (Miles distant)</u>	<u>Cumulative Enrollment 1988-1989</u>
Franklin County Area Vocational Education System	Frankfort	210
Central Kentucky State Vocational-Technical School	Lexington (29)	1,043

OTHER LOCAL FACILITIES

Local Medical Personnel

Physicians - 55
Dentists - 22

Hospitals

<u>General Hospital</u>	<u>Location</u>	<u>Beds</u>
HCA Kings Daughters Memorial Hospital	Frankfort	190

Medical staff - 45 physicians, 86 registered nurses, 19 physicians on courtesy staff

The HCA King's Daughters Memorial Hospital has added a psychiatric and chemical dependency unit and has expanded its out-patient surgery facility.

Other Medical Facilities and Services

Franklin Medical Center
Comprehensive Care Center
Capital Surgical Clinic
Franklin County Health Department

Banks and Savings & Loan

The Cumberland
Farmers Bank
First Federal Savings and Loan
Republic Savings Bank
State National Bank

Newspapers

State Journal (Daily)
Buyers Guide

Telephone Service

South Central Bell

RECREATION

Local

The city of Frankfort provides excellent recreational facilities and organized programs for the youth, adults, and senior citizens of the community. A full-time staff organizes and promotes supervised sporting activities each year. The recreation department sponsors softball leagues and Instructional, Minor, Little Babe Ruth League, and Senior Babe Ruth baseball leagues. In addition, there are tennis leagues, archery club, croquet club, volleyball leagues, and golf.

The recreation department also maintains three multi-facility parks. Juniper Hills Park has an 18-hole golf course, pro-shop, an Olympic-size swimming pool, four lighted tennis courts, two lighted volleyball courts, picnic facilities, two playgrounds, horseshoe pits, a basketball court, a tree arboretum, a shelter, and gazebo.

East Frankfort Park has a swimming pool, four lighted tennis courts, lighted minor league and instructional league baseball fields, a lighted softball field, concrete and sand volleyball courts, nature trails, playground equipment, picnic facilities and two shelters. The park also includes a playground with therapeutic equipment.

The Capital View Park includes two lighted softball fields, an unlighted softball field, volleyball courts, two basketball courts, picnic facilities, playground, a 6.2 mile running trail with seven exercise stations, nature trails, and two shelters.

South Frankfort Park has a concrete volleyball court, a playground, two basketball courts, picnic facilities and a shelter.

A new riverfront park, to be built in the spring of 1990, will be located on Wilkinson Boulevard. The park will include a boat dock for the operation of a cruise boat and an open space for passive recreation. The park will be completed in the summer of 1990.

In addition to the city park system, The State Department for Fish and Wildlife maintains a Game Farm in Frankfort. Visitors to the Game Farm can enjoy viewing many native Kentucky animals. A fishing lake and picnic area are also available.

The Frankfort YMCA offers numerous programs for children and adults. The facility houses a swimming pool, racquetball court, a handball court, weight lifting equipment, and fitness center. A successful soccer program is also administered by the YMCA.

There are vast cultural opportunities available in Frankfort. In addition to the many museums and historic homes to visit, two art galleries are located in Frankfort. The community benefits from two theatre groups and cultural events sponsored by the Frankfort Arts Foundation.

Area (Within 50 miles)

The Kentucky Horse Park
Taylorsville Lake State Park
Waveland State Shrine
Old Fort Harrod State Park
Herrington Lake
Pleasant Hill
Constitution Square State Shrine
E.P. "Tom" Sawyer State Park
Perryville Battlefield State Shrine
Lincoln Homestead State Park
White Hall State Shrine

COMMUNITY IMPROVEMENTS

Recent

Frankfort was re-certified as a "Kentucky Certified City" in 1989, and is distinguished as a silver award winner as they have been certified for four consecutive years. Re-certification is based on achievement in the following areas: existing industry assistance, small business assistance, educational resources, and community development factors of health care, public safety arts and culture, recreation, governmental awareness and resources. The Certified Cities Program is sponsored by the Kentucky Chamber of Commerce.

The Frankfort - Franklin County Industrial Foundation has developed a new 155 acre industrial park on U.S. 60. Ohi Atwood has located a 77,000 square-foot plant, employing approximately 225 people, that will occupy 23.17 acres of the new park. The company, which will manufacture automobile window regulators, will begin operations in early 1990. GRW Industries announced in December that they will also construct a plant in the new industrial park and has contracted to purchase 14.34 acres. The 67,000 square-foot plant will employ from 65 to 120 people and manufacture tubular automotive parts.

The city of Frankfort has purchased 180 acres on Kentucky 626 (East-West Connector). The state plans to utilize 25 to 50 acres to locate a lab facility. The remaining acres will be developed by the city for use as a possible research park.

The Franklin County School System has completed the renovation of two middle schools. In addition, the school system has added four classrooms, a media center, and a kitchen and cafeteria to two elementary schools. Network computer laboratories have been installed in the middle schools and additional counselors have been hired throughout the school system. Several new science classes were added to the curriculum in both high schools such as, advanced placement biology, genetics, and ecology. Renovation of the Thornhill Center is complete and is the home of Franklin County Community Education which offers many programs for adult learning, including typing and computer skills. The center also houses the Adult Learning Center, which implements adult literacy programs, adult vocational counseling, and GED preparation classes.

The Frankfort Independent School System completed a \$2,500,000 addition and renovation project at the Second Street Elementary School in January 1990. The project added eight classrooms, a new library, cafeteria, gymnasium and computer room.

Kentucky State University has completed numerous capital improvements recently. The Blazer Library has undergone a \$3.6 million expansion and renovation project, \$1.6 million in campus roadway, walkway, and landscaping improvements, and a \$400,000 animal care laboratory project are among some of the major capital improvements implemented at the University. In addition, Kentucky State University has expanded its academic offerings to include an associate degree in Manufacturing Technology and is planning to add a new specialization in rural development to its Masters degree program in Public Administration.

Underway

A renovation project is currently underway at city hall and is expected to be completed in the spring of 1990. A major component of the renovation is the installation of a consolidated dispatch for 911 which will simultaneously handle calls for both ambulance service and the fire department.

Downtown Frankfort, Inc. is implementing the Mainstreet program in Frankfort. The organization has scheduled town meetings, sponsored numerous events to draw people to the downtown area, and has commissioned a study of downtown Frankfort. Negotiations with local banks led to the formation of a loan pool for the renovation and revitalization of buildings. Downtown Frankfort also offers technical assistance for facade improvements.

The construction of two bridges across the Kentucky River was completed in the Fall of 1989. The bridges connect Wilkinson Boulevard with the Plaza Connector. A 1.024-mile section of U.S. 127 North is currently being reconstructed. The \$3 million project is expected to be completed by July 1991 and will add a truck lane and straighten Cedar Cove Hill, which serves as a major route to Owenton and Carrollton, Kentucky.

Planned

Construction is scheduled to begin in mid to late 1990 on a floodwall along the Kentucky river which will protect seventy-five percent of the businesses and residents in South Frankfort. A study of the areas that will not be protected is planned in order to develop relocation assistance programs and programs to assist in procuring grants for elevating structures.

Construction of a new riverfront park is scheduled to begin in the Spring of 1990. The park will be located on Wilkinson Boulevard and will include a docking area for a cruise boat, a parking lot and open space for passive recreation. The \$50,000 project is to be completed by early summer 1990. Additional improvements to the city's recreational facilities and capital improvements to the recreation department's offices, totaling \$128,000, are planned for 1990-1991.

Franklin County plans to build a community center which would include a YMCA, county fairgrounds, soccer fields and meeting rooms for public organizations.

The Frankfort Municipal Sewer Board has completed a waste water needs assessment. As a result of the study, a pump station has been planned which will serve a portion of western Franklin county at the I-64 127 interchange. The Frankfort Electric and Water Plant Board recently ran a 12-inch line to the new industrial park and has begun to serve Woodford County. Negotiations are in progress to provide water to a portion of the city of Georgetown.



KENTUCKY
Open for Business