

1994

Industrial Resources: Johnson County - Paintsville

Kentucky Library Research Collections
Western Kentucky University, spcol@wku.edu

Follow this and additional works at: https://digitalcommons.wku.edu/johnson_cty



Part of the [Business Administration, Management, and Operations Commons](#), [Growth and Development Commons](#), and the [Infrastructure Commons](#)

Recommended Citation

Kentucky Library Research Collections, "Industrial Resources: Johnson County - Paintsville" (1994). *Johnson County*. Paper 4.
https://digitalcommons.wku.edu/johnson_cty/4

This Report is brought to you for free and open access by TopSCHOLAR®. It has been accepted for inclusion in Johnson County by an authorized administrator of TopSCHOLAR®. For more information, please contact topscholar@wku.edu.

Kentucky

**Resources For
Economic Development**

Paintsville



Prepared by
The Kentucky Cabinet for Economic Development
Division of Research
in cooperation with
Paintsville-Johnson County Chamber of Commerce

1994

Division Director - Pamela K. Riley; program manager - Keith Roberts; research - Barry K. Holder, Jr.; clerical - Wanda Sharp; graphics - Robert Owens. Cost of printing paid from state funds.

TABLE OF CONTENTS

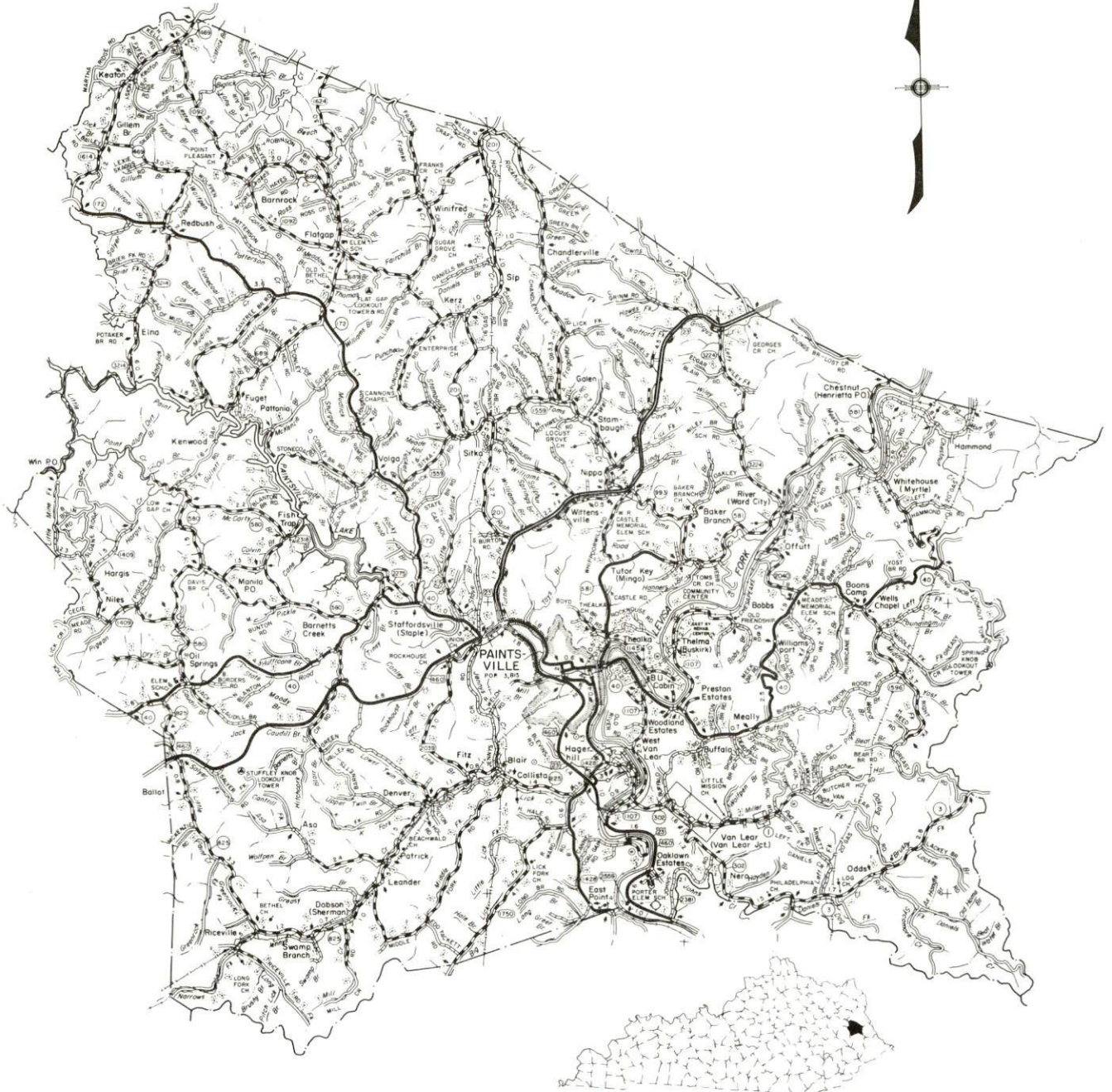
<u>Chapter</u>	<u>Page</u>
PAINTSVILLE, KENTUCKY - A RESOURCE PROFILE	1
THE LABOR MARKET STATISTICS	2
Labor Market Area Map	2
Population	3
Population Projections	3
Estimated Labor Supply	3
Labor Force Characteristics of Residents, 1992	4
Selected Components of Nonagricultural Employment, by Place of Work, 1992	5
Per Capita Personal Income	6
Average Placement Wages	7
Average Weekly Wages of Workers Covered by Unemployment Insurance 1992 - Bar Chart	8
Average Weekly Wages by Industry, by Place of Work, 1992	9
EXISTING INDUSTRY	10
Paintsville Manufacturing Firms, Their Products and Employment	10
Labor Organizations in Manufacturing Firms	10
Selected Industrial Services	11
TRANSPORTATION	12
Highways	12
Truck Service	12
Selected Market Location Map	13
Rail	14
Air	14
UTILITIES	15
Electricity	15
Natural Gas	15
Public Water Supply	16
Sewerage	16
CLIMATE	17

<u>Chapter</u>	<u>Page</u>
LOCAL GOVERNMENT	18
Structure	18
Planning and Zoning	18
Local Fees and Licenses	18
State and Local Property Taxes	19
EDUCATION	20
Public Schools	20
Nonpublic Schools	20
Area Colleges and Universities	20
Vocational Training	21
OTHER LOCAL FACILITIES	23
Local Medical Personnel	23
Hospitals	23
Other Medical Facilities and Services	23
Banks and Savings & Loan Associations	23
Newspapers	23
Telephone Service	23
RECREATION	24

GENERAL HIGHWAY MAP
JOHNSON COUNTY
KENTUCKY

PREPARED BY THE
KENTUCKY TRANSPORTATION CABINET
DEPARTMENT OF HIGHWAYS
DIVISION OF PLANNING

IN COOPERATION WITH THE
U.S. DEPARTMENT OF TRANSPORTATION
FEDERAL HIGHWAY ADMINISTRATION



PAINTSVILLE, KENTUCKY - A RESOURCE PROFILE

Paintsville, the county seat of Johnson County, is located in the Eastern Coal Field Region of Kentucky. Paintsville, with a 1990 population of 4,354, is located 116 miles southeast of Lexington, Kentucky; 186 miles southeast of Louisville, Kentucky; 159 miles southeast of Cincinnati, Ohio; and 201 miles northeast of Knoxville, Tennessee.

Johnson County, with a 1990 population of 23,248, has a land area of 261 square miles.

The Economic Framework - The total number of Johnson County residents employed in 1992 averaged 7,928. Wholesale and retail trade provided 2,088 jobs; 888 people were employed in service occupations; state and local government accounted for 1,286 employees; and 431 people were employed by mining and quarrying operations.

Labor Supply - There is a current estimated labor supply of 23,011 persons available for industrial jobs in the labor market area. In addition, from 1994 through 1998, 10,387 young persons in the area will become 18 years of age and potentially available for industrial jobs.

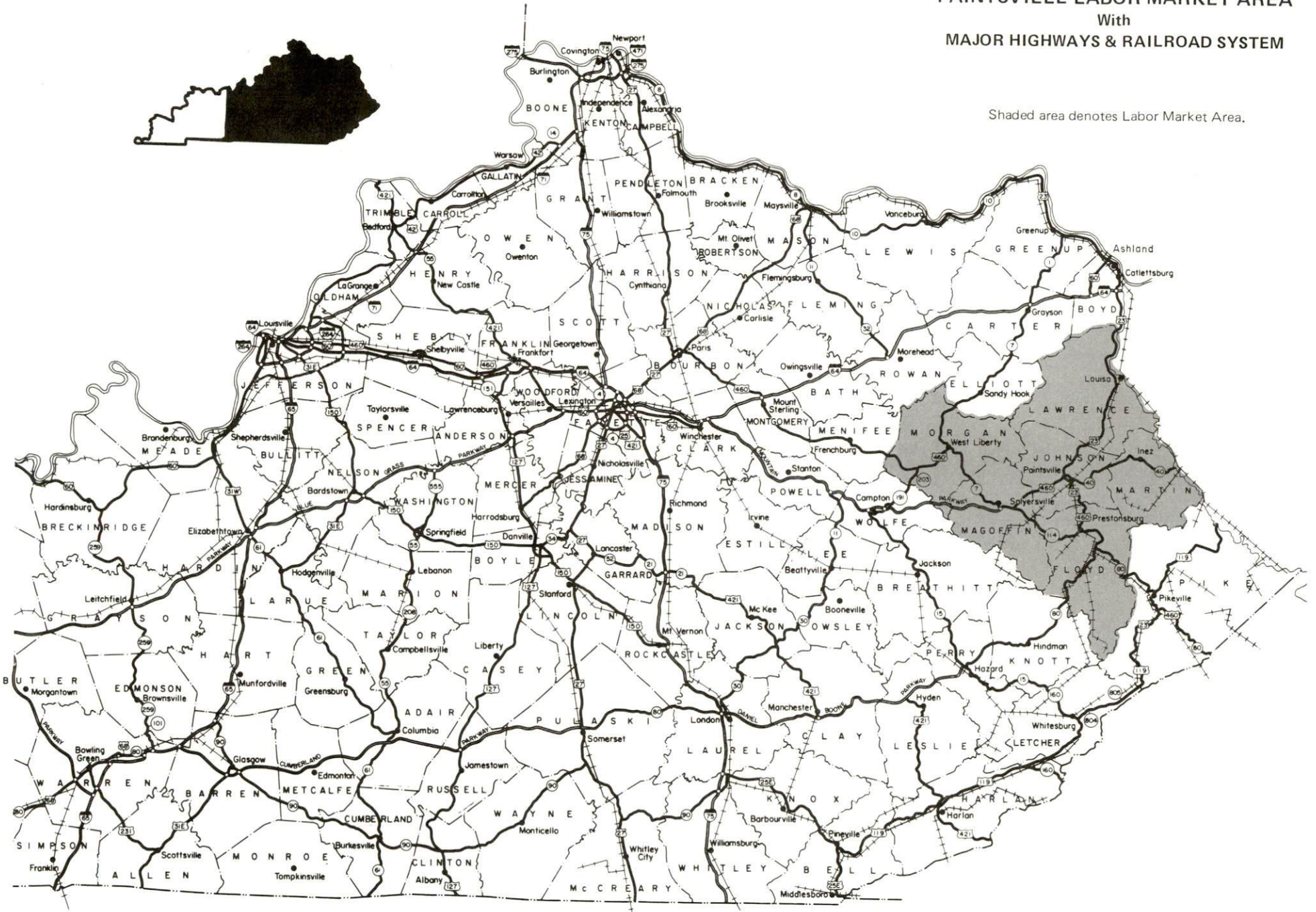
Transportation - Major highways serving Paintsville include U.S. 23, U.S. 460 and Kentucky Highway 40. The Mountain Parkway is located eighteen miles southwest via U.S. 460. Interstate 64, is located fifty-six miles north via U.S. 23 and ninety-four miles northwest via U.S. 460 and the Mountain Parkway. Rail service is provided to Paintsville by CSX Transportation. Fifteen trucking companies provide Paintsville with interstate and/or intrastate service. Combs Airport, five miles south of Paintsville, has a 3,200-foot paved runway. Big Sandy Regional Airport, twenty miles southeast of Paintsville, maintains a 5,000-foot paved runway. The nearest scheduled commercial airline service is available at the Tri-State Field (Walker-Long Field), three miles southwest of Huntington, West Virginia, sixty miles northeast of Paintsville.

Power and Fuel - Electric power is provided to Paintsville and Johnson County by the Kentucky Power Company, an electric generation and transmission company. Johnson County is also served by the Big Sandy Rural Electric Cooperative Corporation, which is supplied by East Kentucky Power. Natural gas is provided to Paintsville by Paintsville City Utilities, which is supplied by Kentucky-West Virginia Gas Company.

Education - Primary and secondary education is provided by the Paintsville Independent and Johnson County School Systems. Two universities, three senior colleges, and three community colleges are located within 70 miles of Paintsville. Vocational education is provided to Paintsville and Johnson County by the Mayo State Vocational-Technical School, located in Paintsville.

PAINTSVILLE LABOR MARKET AREA With MAJOR HIGHWAYS & RAILROAD SYSTEM

Shaded area denotes Labor Market Area.



LABOR MARKET STATISTICS

The Paintsville Labor Market Area includes Johnson County and the adjoining Kentucky counties of Floyd, Lawrence, Magoffin, Martin and Morgan.

POPULATION			
	1990	1980	1970
Labor Market Area	118,083	126,860	93,993
Paintsville	4,354	3,815	3,868
Johnson County	23,248	24,432	17,539

Source: U.S. Department of Commerce, Bureau of the Census, January 1991.

POPULATION PROJECTIONS				
	1995	2000	2010	2020
Labor Market Area	117,978	117,360	116,316	114,066
Johnson County	23,224	23,073	22,715	21,993

Note: Population projections are from Moderate Growth Series forecast.
 Source: University of Louisville, Urban Studies Center, State Data Center.

ESTIMATED LABOR SUPPLY				
	Current			Future
	Total	Unemployed	Not in Labor Force	Becoming 18 years of age 1994 thru 1998
Labor Market Area*	23,011	4,102	18,909	10,387
Johnson County	3,652	714	2,938	1,936

* Additional workers may be drawn from other nearby counties.

Note: Unemployed - persons unemployed and actively seeking work; Not in Labor Force - represents the number of persons who would enter the labor force if suitable employment were available (based on the assumption that persons in Kentucky would like to participate in the labor force in the same proportion that they do nationally). Underemployed persons (employed only 14 to 26 weeks during the year) are no longer included in labor surplus estimates.

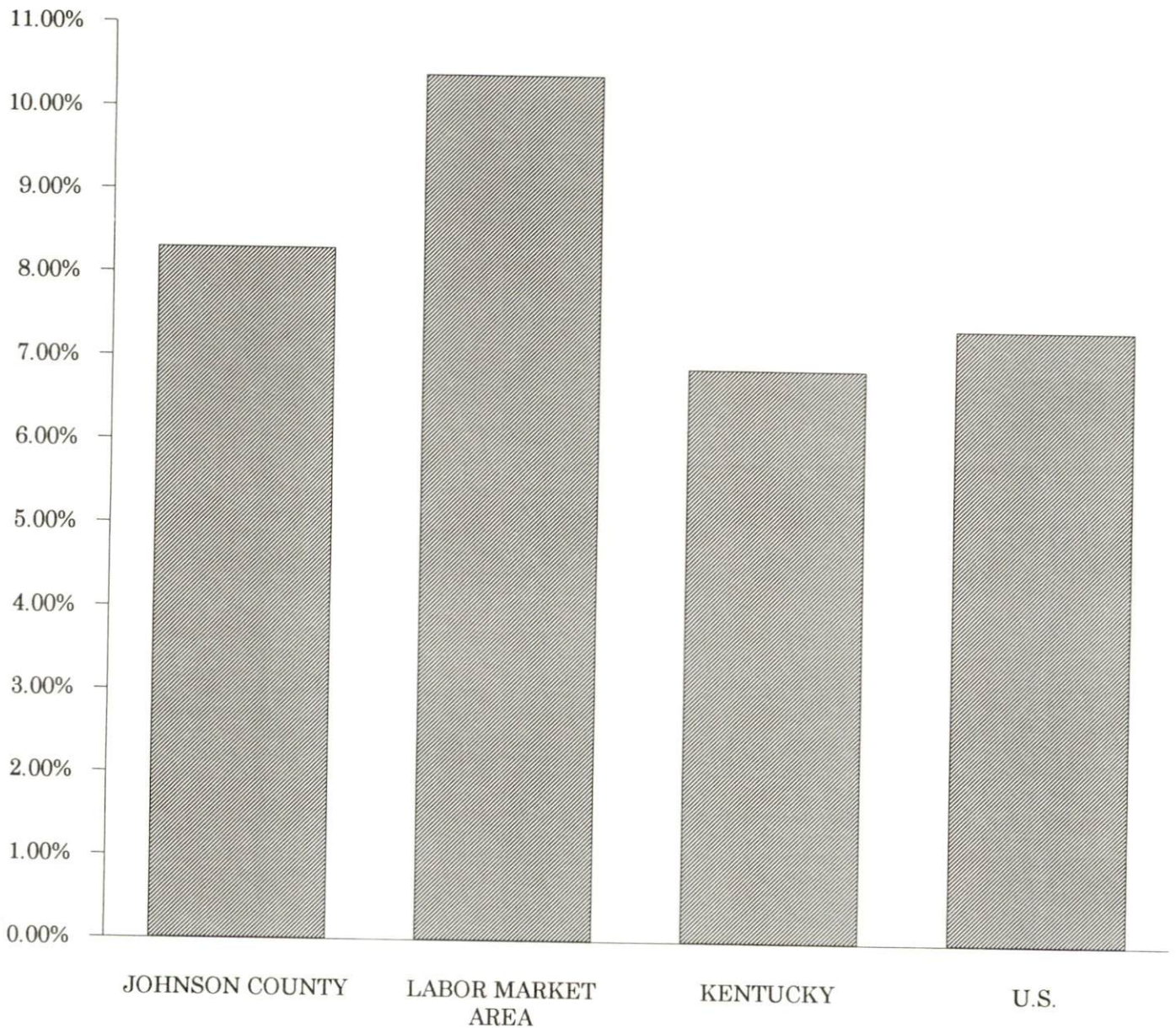
Sources: Kentucky Cabinet for Human Resources, Kentucky Labor Surplus Estimates by County, 1992. Kentucky Cabinet for Economic Development, Future Labor Supply Becoming 18 Years of Age, 1994 thru 1998.

LABOR FORCE CHARACTERISTICS OF RESIDENTS, 1992

	<u>Johnson County</u>	<u>Labor Market Area</u>
Civilian Labor Force	8,642	39,273
Employment	7,928	35,171
Unemployment	714	4,102
Rate of Unemployment (%)	8.3	10.4

Source: Kentucky Cabinet for Human Resources, Kentucky Labor Force Estimates, Annual Averages, 1992.

UNEMPLOYMENT RATES
1992

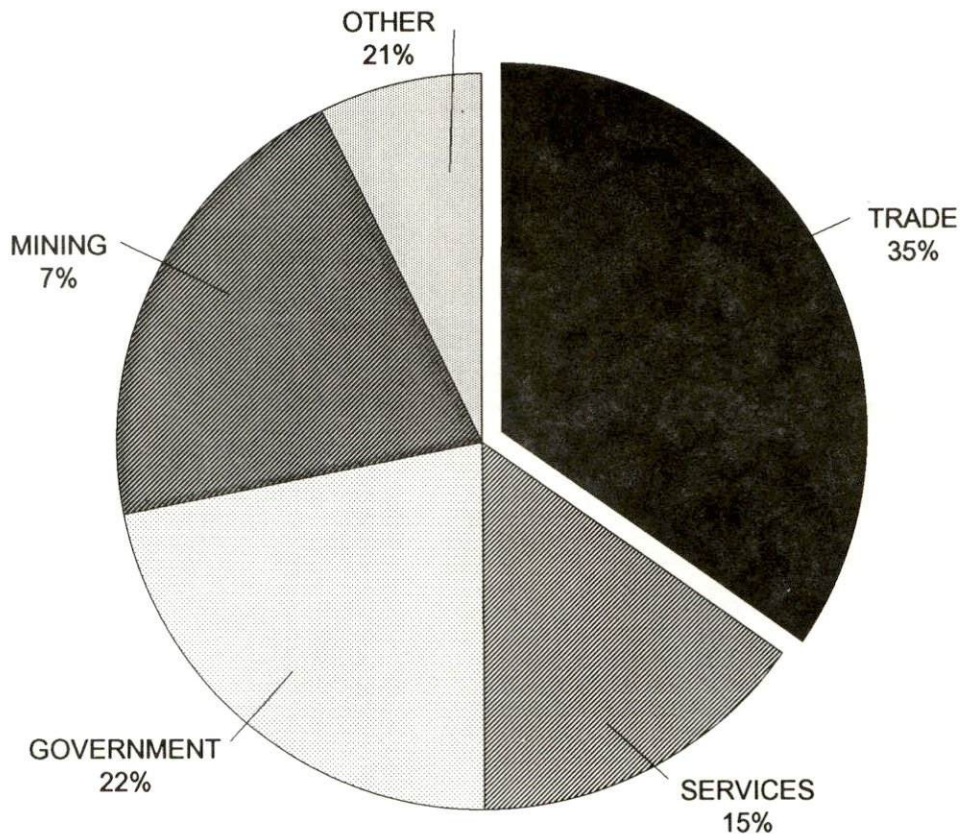


SELECTED COMPONENTS OF NONAGRICULTURAL EMPLOYMENT
BY PLACE OF WORK, 1992

	Johnson County	Labor Market Area
All Industries (total)	6,002	27,331
Manufacturing	N/A	828
Wholesale & Retail Trade	2,088	6,820
Services	888	5,080
State/Local Government	1,286	6,136
Mining & Quarrying	431	3,581

Note: Excludes domestic workers, railway workers, certain nonprofit corporations, majority of federal government workers, and self-employed workers.
Source: Kentucky Cabinet for Human Resources, Average Monthly Workers Covered by Kentucky Unemployment Insurance Law, 1992.

JOHNSON COUNTY

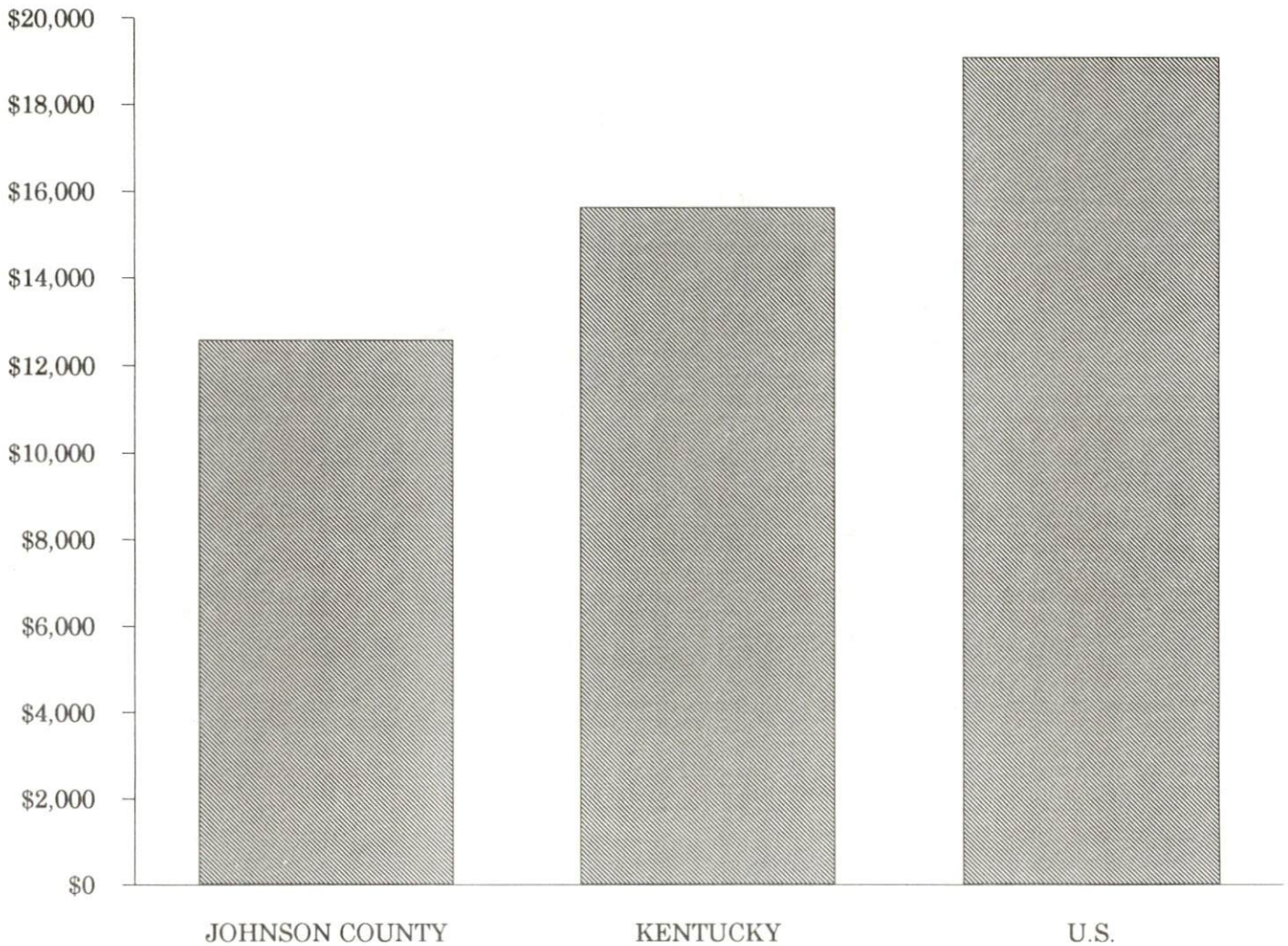


PER CAPITA PERSONAL INCOME

Area	1987	1991	Percent Change
Johnson County	\$9,791	\$12,586	28.5
Labor Market Area Range	\$7,161 - \$10,030	\$9,912 - \$12,995	-
Kentucky	\$12,216	\$15,626	27.9
U.S.	\$15,638	\$19,091	22.0

Source: U.S. Bureau of Economic Analysis, Regional Economic Information System, April 1993.

PER CAPITA PERSONAL INCOME
1991



AVERAGE PLACEMENT WAGES

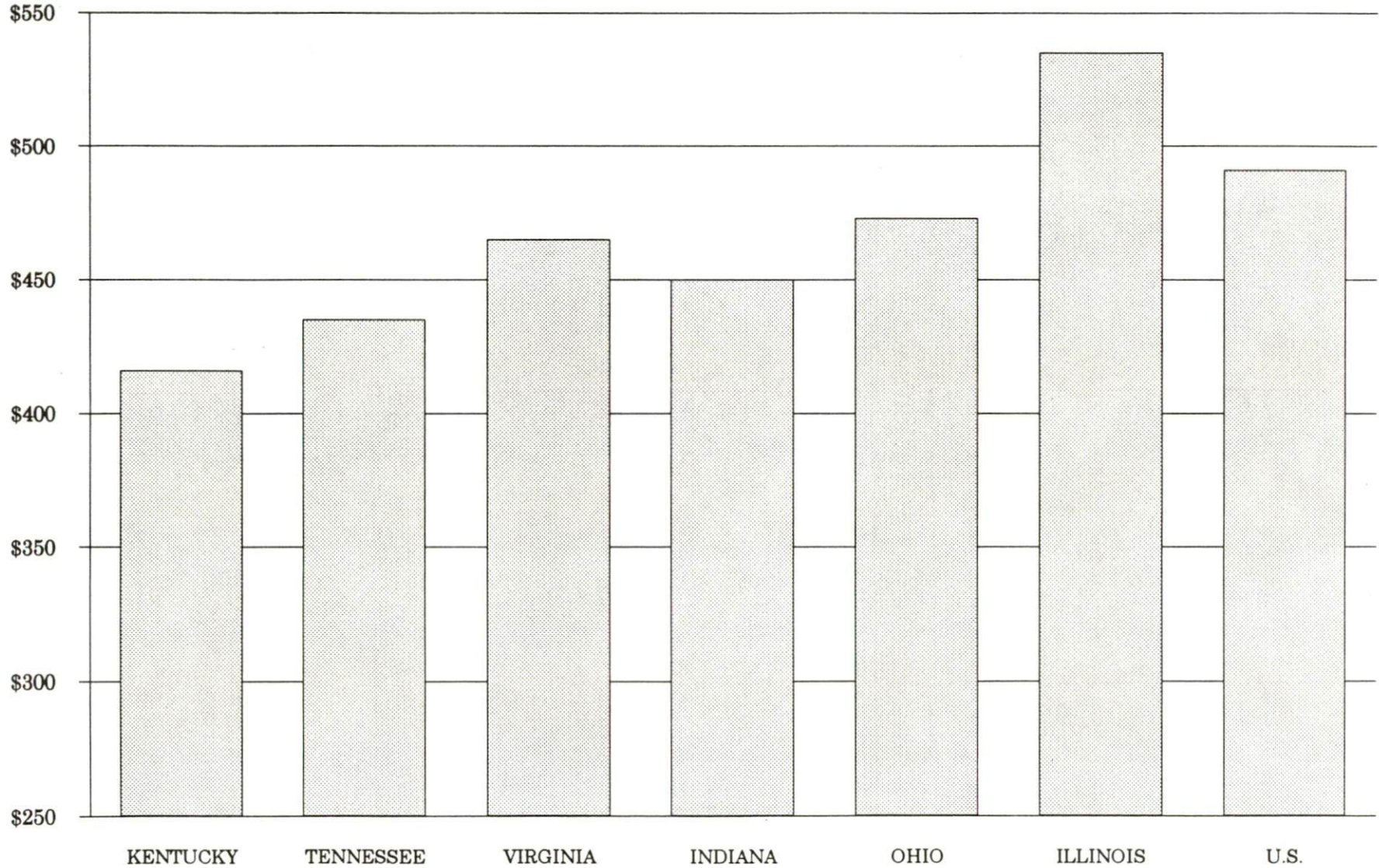
Johnson County is served by the Prestonsburg local office of the Kentucky Department for Employment Services. The focus of the following data is on job placements made by the Prestonsburg local office and may therefore be used as an indicator of the wages which employers in the area pay new employees. During the twelve months which ended on June 30, 1993, the local employment office filled 1,660 job openings in various occupational categories. The average hourly wage for selected occupational categories were:

<u>OCCUPATIONAL CATEGORY</u>	<u>NUMBER OF PLACEMENTS</u>	<u>AVERAGE WAGE(\$)</u>
All Occupations	1,660	5.04
Clerical	361	4.43
Sales	191	4.32
Services (excluding domestic)	617	4.33
Agricultural, Fishery, Forestry, etc.	18	5.35
Processing	1	4.25
Machine Trades	18	7.56
Bench Work	11	4.27
Structural	114	6.44
Motor Freight/ Transportation	57	5.72
Packaging and Materials Handling	129	4.41
Other	53	10.25

The Prestonsburg local office also serves Floyd, Magoffin, and Martin Counties. The above occupational categories are taken from the Dictionary of Occupational Titles published by the U.S. Department of Labor.

Source: Kentucky Cabinet for Human Resources, Department for Employment Services.

**AVERAGE WEEKLY WAGES OF WORKERS COVERED BY
UNEMPLOYMENT INSURANCE - 1992**



AVERAGE WEEKLY WAGES BY INDUSTRY
BY PLACE OF WORK, 1992*

	Johnson County	Kentucky (State- Wide)	Tennessee	Virginia
All Industries	\$345.10	\$415.94	\$435.00	\$465.00
Mining & Quarrying	592.28	685.48	564.00	690.00
Contract Construction	317.77	431.97	456.00	456.00
Manufacturing	N/A	535.73	510.00	535.00
Transportation, Communications & Public Utilities	413.01	560.84	561.00	637.00
Wholesale & Retail Trade	246.73	282.29	N/A	N/A
Finance, Insurance & Real Estate	342.20	493.68	548.00	576.00
Services	331.40	371.91	419.00	483.00
State/Local Government	385.75	434.01	N/A	N/A
	<u>Indiana</u>	<u>Ohio</u>	<u>Illinois</u>	<u>U. S.</u>
All Industries	\$450.00	\$473.00	\$535.00	\$491.00
Mining & Quarrying	731.00	639.00	787.00	799.00
Contract Construction	504.00	525.00	658.00	527.00
Manufacturing	609.00	653.00	652.00	612.00
Transportation, Communications & Public Utilities	548.00	590.00	674.00	632.00
Wholesale & Retail Trade	N/A	N/A	N/A	N/A
Finance, Insurance & Real Estate	511.00	545.00	728.00	670.00
Services	386.00	419.00	488.00	468.00
State/Local Government	N/A	N/A	N/A	N/A

* Wages for U.S. and surrounding states rounded to nearest dollar.

N/A Not Available.

Note: The average weekly wage for each category includes the salaries and wages of all persons working for that type business. For example, the manufacturing category includes both production workers and administrative personnel. Excludes domestic workers, railway workers, certain nonprofit corporations, majority of federal government workers, and self-employed workers.

Source: Kentucky Cabinet for Human Resources, Average Weekly Wages of Workers Covered by Kentucky Unemployment Insurance Law, 1992. U.S. Department of Labor, Bureau of Labor Statistics, Employment and Wages, Annual Averages, 1992, October 1993.

EXISTING INDUSTRY

PAINTSVILLE MANUFACTURING FIRMS, THEIR PRODUCTS AND EMPLOYMENT

<u>Firm</u> (Establishment date)	<u>Product</u>	<u>1993</u> <u>Average Employment</u>
Adams Construction Company (1962)	Crushed limestone, concrete ready mix, bituminous concrete	12
American Automation and Manufacturing, Inc. (1993)	Screw machinery parts, special machines, component parts and sub-assemblies	12
American Standard, Inc. (1969)	Plumbing fittings	330
Commercial Printing Company (1955)	Book publishing, offset printing	5
Fouts Wood Products, Inc. (1988)	Lumber	54
Johnson County Newspapers, Inc. D.B.A. The Paintsville Herald (1901)	Newspaper	10
McGahan Feed Company, Inc. (1942)	Feed	9
Red's Machine Shop, Inc. (1979)	Machine shop, portable boring bar machines, special tools	6
TMC Print Shop, Division of Mountain Chronicle (1985)	Commercial printing	5

Sources: Kentucky Cabinet for Economic Development, Division of Research.

LABOR ORGANIZATIONS IN MANUFACTURING FIRMS

<u>Union</u>	<u>Representing workers at:</u>
United Steelworkers of America, AFL-CIO-CLC	Adams Construction Company; American Standard, Inc.

SELECTED INDUSTRIAL SERVICES

<u>Types of Services</u>	<u>Location</u>	<u>Mileage from Paintsville</u>
Custom Plastics Producers	Wurtland, Kentucky	69
Electric Motor Repair	Ashland, Kentucky	64
Heat Treating Facilities	Richmond, Kentucky	112
	Lexington, Kentucky	116
Industrial Waste Removal	Prestonsburg, Kentucky	13
Machine Shops, Tool & Die	Van Lear, Kentucky	5
Metal Castings	Cynthiana, Kentucky	125
Metal Finishers	Ashland, Kentucky	64
Metal Service Centers	Prestonsburg, Kentucky	13
Millwrights & Riggers	Lexington, Kentucky	116

Sources: Kentucky Cabinet for Economic Development, Division of Research.

TRANSPORTATION

Highways

Major highways serving Paintsville include U.S. 23 and U.S. 460, both "AAA"-rated (80,000-pound gross load limit) trucking highways. Kentucky Highway 40, a "AA"-rated (62,000-pound gross load limit) trucking highway, also serves Paintsville. Access to the Mountain Parkway is eighteen miles southwest of Paintsville via U.S. 460. The Mountain Parkway intersects with Interstate 64, ninety-four miles northwest of Paintsville. Access to Interstate 64 is also available fifty-six miles north of Paintsville via U.S. 23. Kentucky 80, seventeen miles south of Paintsville, is a multilane highway which provides access to the Daniel Boone Parkway, fifty-nine miles southeast of Paintsville. The Daniel Boone Parkway then connects with Interstate 75, 118 miles southwest of Paintsville.

Improvements to U.S. 23 are currently being made between Paintsville and Prestonsburg. The thirteen-mile stretch of U.S. 23 will be converted to a four-lane trucking highway. Completion of the project is scheduled for early 1995.

HIGHWAY MILES FROM PAINTSVILLE, KENTUCKY, TO SELECTED MARKET CENTERS

City	Highway Miles	City	Highway Miles
Atlanta, GA	395	Los Angeles, CA	2,271
Baltimore, MD	473	Louisville, KY	186
Birmingham, AL	444	Nashville, TN	312
Chicago, IL	444	New Orleans, LA	783
Cincinnati, OH	159	New York, NY	658
Cleveland, OH	317	Pittsburgh, PA	304
Detroit, MI	369	St. Louis, MO	444
Knoxville, TN	201		

Note: Mileage computations are via the best interstate or primary highways, not necessarily the most direct route of travel.

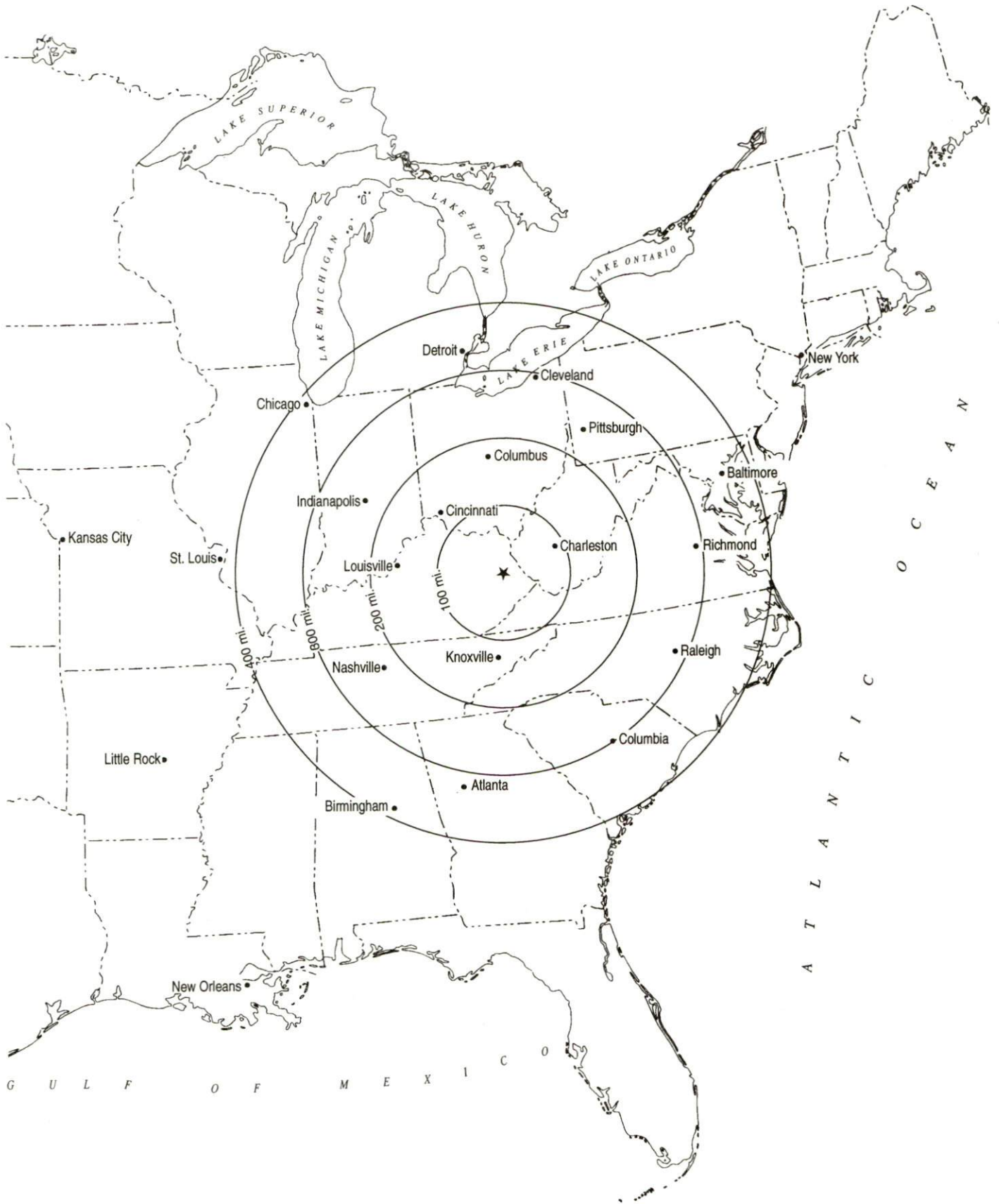
Sources: Rand McNally Standard Highway Mileage Guide, 1990. Official Kentucky Mileage Map, 1985.

Trucking Service

Fifteen trucking companies provide interstate and/or intrastate trucking service to Paintsville.

Source: American Motor Carrier Directory, Spring 1994.

Selected Market Centers



Rail

CSX Transportation provides main line rail service to Paintsville. Norfolk Southern Corporation provides the nearest intermodal facilities, which are located at Georgetown, 124 miles east of Paintsville.

For details on routing, schedules, rates, and services contact:

Manager
Industrial Development
CSX Transportation
9420 Bunsen Parkway
Suite 212
Louisville, Kentucky 40220
(502) 499-3025

Air

Local

Location: Combs Airport
5 miles south of Paintsville
Runways: 1 paved
Length: 3,200 feet
Traffic
Control: Unicom 122.8
Lighting: None
Services: 100LL octane fuel, aircraft rental,
flight instruction

Location: Big Sandy Regional Airport
20 miles south Paintsville
Runways: 1 paved
Length: 5,000 feet
Traffic
Control: Unicom 122.7
Lighting: Rotating beacon, pilot controlled runway and
taxiway lights, PAPI
Services: Jet-A, AV-Gas fuels; light mechanic work;
flight instruction; rental cars; aircraft rental

Nearest Scheduled Commercial Airline Service

Location: Tri-State Field (Walker-Long Field)
3 miles southwest of Huntington, West Virginia;
60 miles northeast of Paintsville
Air Service: C.C. Air, ComAir, Northwest Airlink, USAir
Daily Arrivals
& Departures: 48

UTILITIES

Electricity

Company serving Paintsville and parts of Johnson County - Kentucky
Power Company
Source of power - Kentucky Power Company
For industrial rates contact:

Economic Development Manager
Kentucky Power Company
1701 Central Avenue
P.O. Box 1428
Ashland, Kentucky 41105-1428
(606) 327-1244 Fax (606) 327-1246

Company serving parts of Johnson County - Big Sandy Rural Electric
Cooperative Corporation
Source of power - East Kentucky Power
For industrial rates contact:

Big Sandy Rural Electric
Cooperative Corporation
P.O. Box 1746
Paintsville, Kentucky 41240
(606) 789-4095

and/or

Industrial Development Department
East Kentucky Power
P.O. Box 707
Winchester, Kentucky 40392-0707
(606) 744-4812

Natural Gas

Company serving Paintsville - Paintsville City Utilities
Source of supply - Kentucky-West Virginia Gas Company
For rates and supplies contact:

Paintsville City Utilities
P.O. Box 631
Paintsville, Kentucky 41240
(606) 789-2630

Public Water Supply

Company serving Paintsville - Paintsville City Utilities
P.O. Box 631
Paintsville, Kentucky 41240
(606) 789-2630

Source - Big Sandy River
Treatment plant capacity - 3,000,000 gallons per day
Average daily consumption - 1,600,000 gallons
Peak daily consumption - 2,000,000 gallons
Storage capacity - 1,700,000 gallons
Water pressure - 70 psi to 86 psi

Sewerage

Company serving Paintsville - Paintsville City Utilities
P.O. Box 631
Paintsville, Kentucky 41240
(606) 789-2630

Design capacity - 990,000 gallons per day
Average daily flow - 750,000 gallons
Type of treatment - Secondary
Treated effluent discharged into - Big Sandy River

CLIMATE

Johnson County

Temperature

Normal (30-year record)	55.90 degrees
Average annual 1992	55.50 degrees
Record highest, July 1952 (47-year record)	102.00 degrees
Record lowest, January 1985 (47 year record)	-21.00 degrees
Normal heating degree days (30-year record) (Heating degree day totals are the sums of negative departures of average daily temperatures from 65 degrees F.)	4,356

Precipitation

Normal (30-year record)	41.24 inches
Mean annual snowfall (55-year record)	15.70 inches
Total precipitation 1992	38.72 inches
Mean number days precipitation (.01 inch or more) (47-year record)	133.40
Mean number days thunderstorms (49-year record)	43.00

Prevailing winds (through 1963)

Northeast

Relative Humidity (31-year record)

1 a.m.	81 percent
7 a.m.	86 percent
1 p.m.	57 percent
7 p.m.	63 percent

Source: U.S. Department of Commerce, Environmental Science Services Administration, Climatological Data, 1992. Station of record: Bristol, Johnson City, Kingsport, Tennessee.

LOCAL GOVERNMENT

Structure

Paintsville is served by a mayor and six council members. Johnson County is served by a county judge/executive, a deputy judge/executive and three commissioners.

Planning and Zoning

City agency - Paintsville Planning and Zoning Commission

Zoning enforced - Yes

Subdivision regulations enforced - Within city limits and five miles beyond

Local codes enforced - Building and housing

Mandatory state codes enforced - Kentucky Plumbing Code, National Electric Code, Kentucky Boiler Regulations and Standards, Kentucky Building Code (modeled after BOCA code)

Local Fees and Licenses

The City of Paintsville levies an occupational license tax of 1% on gross salaries of individuals and 1% on net profits of businesses. An annual license fee of \$25 is also charged.

PROPERTY TAXES

The Kentucky Constitution requires the state to tax all classes of taxable property, and state statutes allow local jurisdictions to tax only a few classes. All locally taxed property is subject to county taxes and school district taxes (either a county school district or an independent school district). Property located inside of city limits may also be subject to city property taxes.

Special local taxing jurisdictions (fire protection districts, watershed districts, and sanitation districts) levy taxes within their operating areas (usually a small portion of community or county).

Property assessments in Kentucky are at 100% fair cash value. Accounts receivable are taxed at 85% of face value.

STATE PROPERTY TAX RATES PER \$100 VALUATION

<u>Selected Classes of Property</u>	<u>1992 State Rate</u>	<u>Local Taxation Permitted</u>
Real Estate	\$0.184	YES
Manufacturing Machinery	0.150	NO
Pollution Control Equipment	0.150	NO
Inventories		
Raw Materials	0.050	NO
Goods in Process	0.050	NO
Finished Goods	0.050	YES
Motor Vehicles	0.450	YES
Other Tangible Personal Property	0.450	YES
Intangibles (Accounts Receivable, Money on Hand)	0.250	NO

LOCAL PROPERTY TAX RATES PER \$100 VALUATION, 1992

<u>Taxing Jurisdiction</u>	<u>Real Estate</u>	<u>Finished Goods & Tangibles</u>	<u>Motor Vehicles</u>
Johnson County	\$0.2200	\$0.2212	\$0.2186
School Districts:			
Paintsville Independent	0.7440	0.7440	0.7270
Johnson County	0.4300	0.4300	0.4390
Cities:			
Paintsville	0.1431	0.1431	0.1148

EDUCATION

Public Schools

	Paintsville Independent	Johnson County
Total Enrollment (Fall, 1992)	931	4,123
Accreditation	Southern Association of Colleges and Schools	
Pupil-Teacher Ratio (1991-92)	17.2-1	17.7-1
Percent High School Graduates to College (1991-92)	96.9	41.5
Expenditures Per Pupil (1991-92)	\$3,757.85	\$3,531.83

Nonpublic Schools

<u>School</u>	<u>Enrollment</u>	<u>Grades</u>
Our Lady of the Mountains Elementary	75	PS-8

Area Colleges and Universities

<u>Name</u>	<u>Location (Miles distant)</u>	<u>Enrollment (Fall, 1992)</u>
Prestonsburg Community College	Prestonsburg, Kentucky (13)	2,887
Pikeville College	Pikeville, Kentucky (40)	991
Alice Lloyd College	Pippa Passes, Kentucky (53)	579
Lees College	Jackson, Kentucky (59)	459
Hazard Community College	Hazard, Kentucky (63)	1,695
Ashland Community College	Ashland, Kentucky (64)	3,276
Marshall University	Huntington, West Virginia (65)	13,093
Morehead State University	Morehead, Kentucky (67)	9,169

VOCATIONAL-TECHNICAL TRAINING

Kentucky Tech schools are operated by the Cabinet for Workforce Development and provide secondary (Sec) and postsecondary (P/S) vocational-technical training.

<u>Kentucky Tech Schools</u>	<u>Location</u>	<u>Number of Program Offerings</u>	<u>Cumulative Enrollment 1992-1993</u>	<u>Approximate Number Completing Programs Annually</u>
Mayo State Vocational-Technical School	Paintsville	19	Sec 101 P/S 776	258

Customized Training

The Kentucky Tech system, through its Training and Development Coordinators, will provide technical assistance and will identify and develop low cost customized training programs and services for both established and prospective businesses. Businesses wanting to establish a customized training program should simply contact a Training and Development Coordinator located on the campus of Mayo SVTS.

Assessment Services

Kentucky Tech Career Connections offers to business, education, and government agencies testing packages for evaluating job applicants, selecting employees for promotional consideration and developing training programs within the organization. A Career Connections Assessment Center is located on the campus of Mayo SVTS.

Tech Prep

Tech Prep is a combined secondary and postsecondary program of studies that leads to an associate degree or diploma in a vocational-technical field. In Paintsville, Johnson Central High School in partnership with Mayo SVTS and Prestonsburg Community College is in the third year implementation of its Tech Prep program in Technology, Health, Human Services and Business.

Adult Education Services

Adult education programs are available to adults who want to develop new skills, improve basic skills or earn a high school equivalency diploma. In Paintsville, adult education is provided through the Johnson County Board of Education and the Mayo SVTS, and adult literacy programs are provided through the Johnson County Literacy Project.

Bluegrass State Skills Corporation

The Bluegrass State Skills Corporation, an independent public corporation created and funded by the Kentucky General Assembly, provides programs of skills training to meet the needs of business and industry from entry level to advanced training, and from upgrading present employees to retraining experienced workers.

The Bluegrass State Skills Corporation is a major source for skills training assistance for a new or existing company. The Corporation works in partnership with other employment and job training resources and programs, as well as Kentucky's economic development activities, to package a program customized to meet the specific needs of a company.

OTHER LOCAL FACILITIES

Local Medical Personnel

Physicians - 30
Dentists - 6

Hospitals

<u>General Hospital</u>	<u>Location</u>	<u>Beds</u>
Paul B. Hall Regional Medical Center	Paintsville	72
Highlands Regional Medical Center	8 miles south of Paintsville	184

Paul B. Hall Regional Medical Center

Medical staff - 27 active physicians; 8 courtesy physicians;
16 consulting physicians; 54 registered nurses; 24 licensed
practical nurses

Highlands Regional Medical Center

Medical staff - 34 active physicians; 28 courtesy physicians;
91 registered nurses; 60 licensed practical nurses

Other Medical Facilities and Services

Paintsville Health Care Center
Burchett's Ambulance Service
Sandy Valley Medical Clinic
Big Sandy Health Department
Johnson County Rescue Squad, Inc.

Banks and Savings & Loan Associations

Citizens National Bank
First National Bank
Family Federal Bank

Newspapers

The Paintsville Herald (weekly)

Telephone Service

South Central Bell

RECREATION

Local

Excellent recreational facilities are provided for the citizens of Paintsville. The Paintsville Park and playground, which covers a 16-acre area, offers a lighted Little League field, a lighted baseball and softball field, lighted tennis courts, basketball courts, a swimming pool, an Olympic racing pool, and a service building with restroom facilities.

A community center provides covered facilities and a lighted area for family outings. A five-acre park adjacent to the center features a Little League field, basketball courts, racquetball courts, a 320-meter running track, playground equipment, and grills.

Paintsville Country Club has an 18-hole golf course, a swimming pool, and several tennis courts, which are open to the public. Several golf tournaments are held there each year.

A stadium owned by the Paintsville Independent School District is the site for football games, and events connected with the annual Apple Festival.

Paintsville Lake State Park, a 1,139-acre recreational lake and park, is located four miles west of Paintsville. Recreational opportunities include fishing, boating and marina, swimming, and hunting.

Butcher Hollow, located at Van Lear, is the birthplace of country music superstars Loretta Lynn and Crystal Gayle. Tours are available.

Development of Mountain Homeplace Historic Area is presently under way near Paintsville at the Paintsville Lake. The park will recreate a typical 1850s farm which will include a living history village of a log cabin, log church, log school and authentic crops and animals. The project is scheduled for completion by Spring 1995.

Area (Within 80 miles)

Jenny Wiley State Resort Park
Dewey Lake
Grayson Lake State Park
Breaks Interstate Park
Natural Bridge State Resort Park
Red River Gorge
Cave Run Lake
Greenbo Lake State Resort Park
Yatesville Lake State Park