

1991

# Industrial Resources: Lewis County - Vanceburg

Kentucky Library Research Collections  
Western Kentucky University, [spcol@wku.edu](mailto:spcol@wku.edu)

Follow this and additional works at: [https://digitalcommons.wku.edu/lewis\\_pty](https://digitalcommons.wku.edu/lewis_pty)



Part of the [Business Administration, Management, and Operations Commons](#), [Growth and Development Commons](#), and the [Infrastructure Commons](#)

---

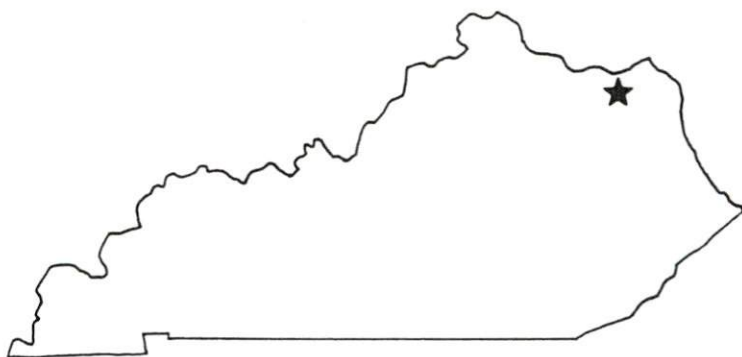
## Recommended Citation

Kentucky Library Research Collections, "Industrial Resources: Lewis County - Vanceburg" (1991). *Lewis County*. Paper 5.  
[https://digitalcommons.wku.edu/lewis\\_pty/5](https://digitalcommons.wku.edu/lewis_pty/5)

This Report is brought to you for free and open access by TopSCHOLAR®. It has been accepted for inclusion in Lewis County by an authorized administrator of TopSCHOLAR®. For more information, please contact [topscholar@wku.edu](mailto:topscholar@wku.edu).

# *Resources for Economic Development*

## Vanceburg



**KENTUCKY**  
*Open for Business*

---

RESOURCES FOR ECONOMIC DEVELOPMENT

VANCEBURG, KENTUCKY

Prepared by  
The Kentucky Cabinet for Economic Development  
Division of Research and Planning  
in cooperation with  
The Vanceburg-Lewis County Industrial Authority

1991

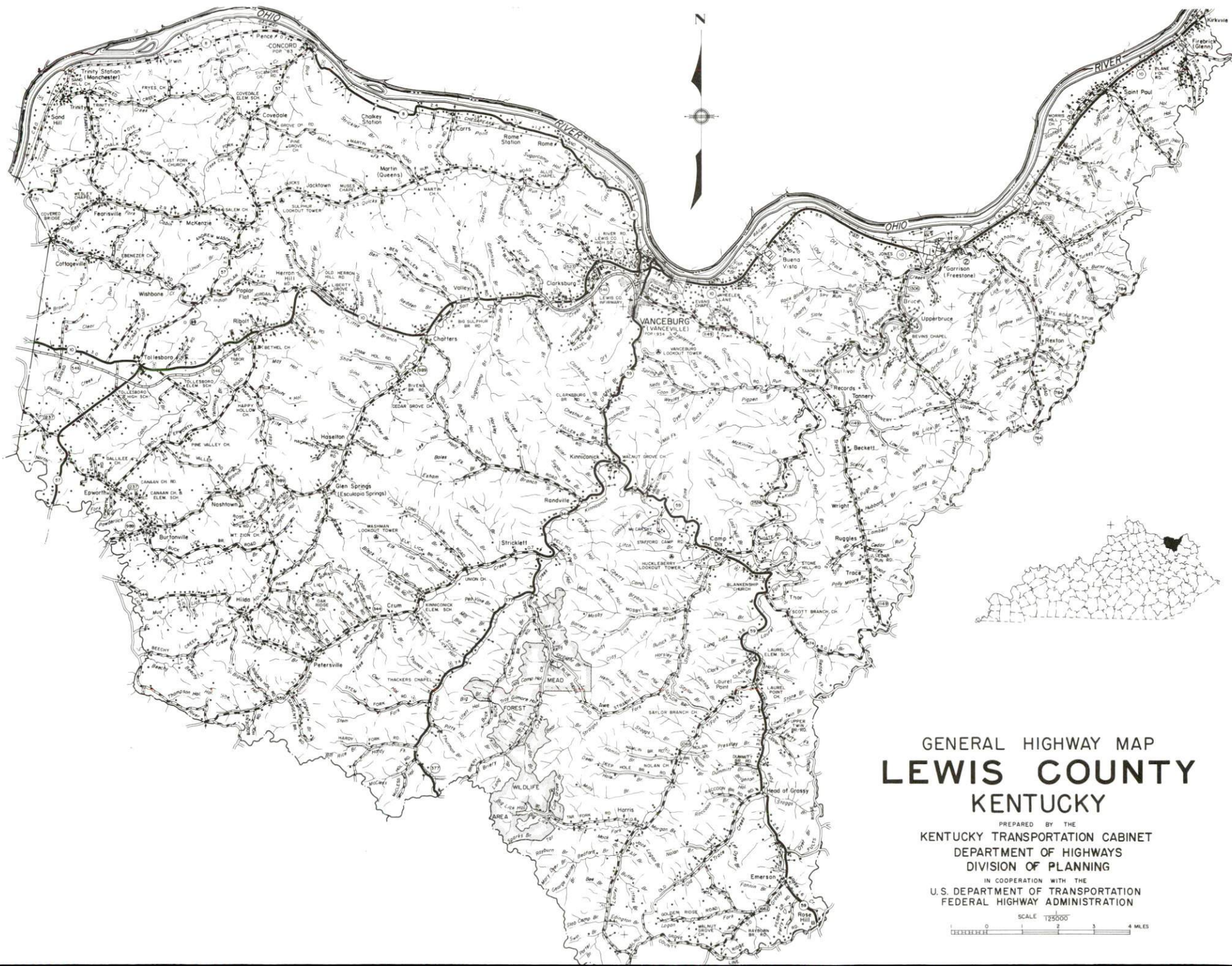
Division Director - Pamela K. Riley; program manager - Keith Roberts; research - Barry K. Holder, Jr.; clerical - Wanda Sharp; graphics - Robert Owens, Pat Coleman; cartography - Edwin Scott, Dave Clark. Cost of printing paid from state funds.

## TABLE OF CONTENTS

<u>Chapter</u>	<u>Page</u>
VANCEBURG, KENTUCKY - A RESOURCE PROFILE .....	1
THE LABOR MARKET STATISTICS.....	2
Labor Market Area Map .....	2
Population .....	3
Population Projections .....	3
Estimated Labor Supply .....	3
Labor Force Characteristics of Residents, 1989 .....	4
Selected Components of Nonagricultural Employment, by Place of Work, 1989.....	5
Per Capita Personal Income.....	6
Average Placement Wages.....	7
Average Weekly Wages of Workers Covered by Unemployment Insurance 1988 - Bar Chart .....	8
Average Weekly Wages by Industry, by Place of Work, 1988.....	9
EXISTING INDUSTRY.....	10
Lewis County Manufacturing Firms, Their Products and Employment .....	10
Recent Industrial Developments .....	10
Labor Organizations in Manufacturing Firms .....	10
Selected Industrial Services .....	11
TRANSPORTATION .....	12
Highways.....	12
Truck Service .....	12
Selected Market Location Map .....	13
Rail .....	14
Air .....	14
Water.....	14
UTILITIES .....	15
Electricity.....	15
Natural Gas.....	15
Public Water Supply.....	16
Raw Water.....	16
Sewerage.....	17
CLIMATE.....	18

<u>Chapter</u>	<u>Page</u>
LOCAL GOVERNMENT .....	19
Structure .....	19
Planning and Zoning .....	19
Local Fees and Licenses .....	19
State and Local Property Taxes .....	20
Combined State and Local Rates Per \$100 Valuation, 1989 .....	20
EDUCATION .....	21
Public Schools .....	21
Area Colleges and Universities .....	21
Vocational Training .....	22
OTHER LOCAL FACILITIES .....	23
Local Medical Personnel .....	23
Hospitals .....	23
Other Medical Facilities and Services .....	23
Banks and Savings & Loan Associations .....	23
Newspapers .....	23
Telephone Service .....	23
RECREATION .....	24
COMMUNITY IMPROVEMENTS .....	25





GENERAL HIGHWAY MAP  
**LEWIS COUNTY**  
KENTUCKY

PREPARED BY THE  
KENTUCKY TRANSPORTATION CABINET  
DEPARTMENT OF HIGHWAYS  
DIVISION OF PLANNING  
IN COOPERATION WITH THE  
U.S. DEPARTMENT OF TRANSPORTATION  
FEDERAL HIGHWAY ADMINISTRATION

SCALE 1:25000  
0 1 2 3 4 MILES  
0 1 2 3 4 FEET



## VANCEBURG, KENTUCKY - A RESOURCE PROFILE

Vanceburg, the county seat of Lewis County, is located in the north central portion of Lewis County. With a 1988 estimated population of 2,350, Vanceburg is located 72 miles northwest of Huntington, West Virginia; 89 miles northeast of Lexington, Kentucky; 100 miles southeast of Cincinnati, Ohio; and 162 miles east of Louisville, Kentucky.

Lewis County, with a land area of 484 square miles, is located in northeastern Kentucky. The Ohio River forms the northern boundary of the county and the Licking River forms the southern boundary. In 1988, Lewis County had an estimated population of 13,900.

**The Economic Framework** - The total number of Lewis County residents employed in 1989 averaged 5,108. Manufacturing firms in the county reported 1,135 employees; wholesale and retail trade provided 254 jobs; 167 people were employed in service occupations; state and local government accounted for 458 employees; and contract construction firms provided 49 jobs.

**Labor Supply** - There is a current estimated labor supply of 22,332 persons available for industrial jobs in the labor market area. In addition, from 1990 through 1994, 10,202 young persons in the area will become 18 years of age and potentially available for industrial jobs.

**Transportation** - Highways serving Vanceburg include Kentucky Route 10, a "AAA"-rated trucking highway; and Kentucky Routes 8 and 59, both "AA"-rated trucking highways. Construction of the Alexandria-Ashland Highway, which extends from I-275 in northern Kentucky through Vanceburg, is currently under way. Twelve trucking companies provide interstate and/or intrastate service to the area. CSX Transportation provides main line rail service to Vanceburg. The nearest scheduled commercial airline service is available at Tri-State Airport near Huntington, West Virginia, 69 miles southeast of Vanceburg. The Fleming-Mason Airport, 39 miles southwest of Vanceburg, maintains a 5,000-foot runway designed to accommodate small aircraft.

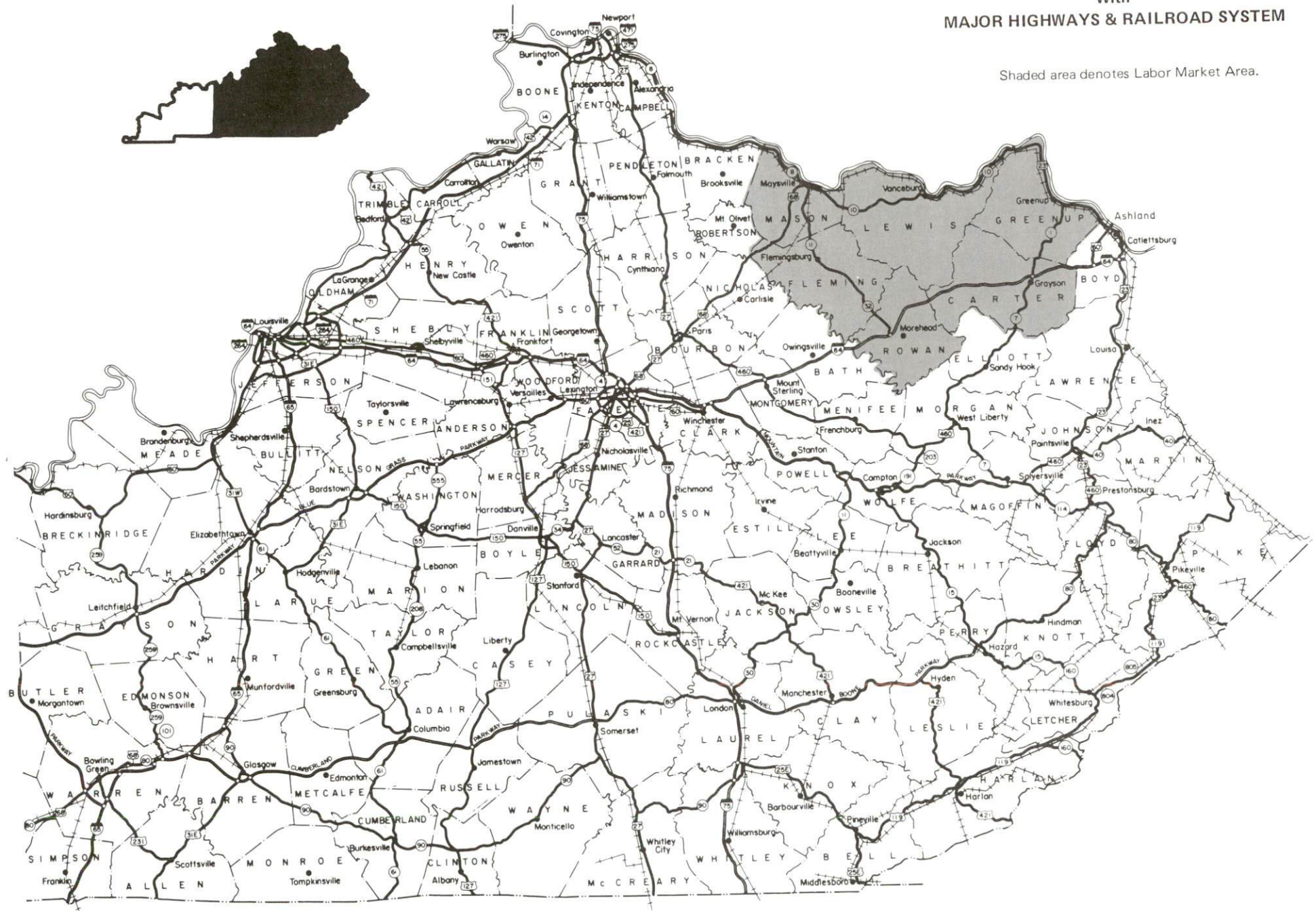
**Power and Fuel** - Electric power is provided to Vanceburg and parts of Lewis County by the Vanceburg Electric System. Lewis County is also provided electric power by the Fleming-Mason Rural Electric Cooperative Corporation. Natural gas service is provided to Vanceburg by the Vanceburg Utilities System.

**Education** - Primary and secondary education is provided to Vanceburg and Lewis County by the Lewis County School System. Ten colleges and universities are located within 90 miles of Vanceburg. The Rowan State Vocational-Technical School in Morehead, Kentucky, and the Lewis County Area Vocational Education Center in Vanceburg, each provide vocational training facilities to the area.



# VANCEBURG LABOR MARKET AREA With MAJOR HIGHWAYS & RAILROAD SYSTEM

Shaded area denotes Labor Market Area.



## LABOR MARKET STATISTICS

The Vanceburg Labor Market Area includes Lewis County and the adjoining Kentucky counties of Carter, Fleming, Greenup, Mason, and Rowan.

POPULATION			
	<u>1988*</u>	<u>1980</u>	<u>1970</u>
Labor Market Area	125,400	127,869	111,046
Vanceburg	2,350	1,939	1,773
Lewis County	13,900	14,545	12,355

\* Population estimates.

Sources: U.S. Department of Commerce, Bureau of the Census, August 1989; November 1989.

POPULATION PROJECTIONS				
	<u>2000</u>	<u>2010</u>	<u>2020</u>	<u>2030</u>
Labor Market Area	127,240	126,860	124,020	119,000
Lewis County	14,610	14,900	14,850	14,490

Source: University of Louisville, Urban Studies Center, State Data Center.

ESTIMATED LABOR SUPPLY					
	Current				Future
	<u>Total</u>	<u>Unemployed</u>	<u>Employed Part-Time</u>	<u>Not in Labor Force</u>	<u>Becoming 18 years of age 1990 thru 1994</u>
Labor Market Area*	22,332	3,921	6,445	11,966	10,202
Lewis County	2,659	516	745	1,398	1,357

\* Additional workers may be drawn from other nearby counties.

Note: Unemployed - persons unemployed and actively seeking work; Employed Part-Time - persons employed but working only 14 to 26 weeks per year; Not in Labor Force - represents the number of persons who would enter the labor force if suitable employment were available (based on the assumption that persons in Kentucky would like to participate in the labor force in the same proportion that they do nationally).

Sources: Kentucky Cabinet for Human Resources, Kentucky Labor Supply Estimates by County, 1989. Kentucky Cabinet for Economic Development, Future Labor Supply Becoming 18 Years of Age, 1990 thru 1994.

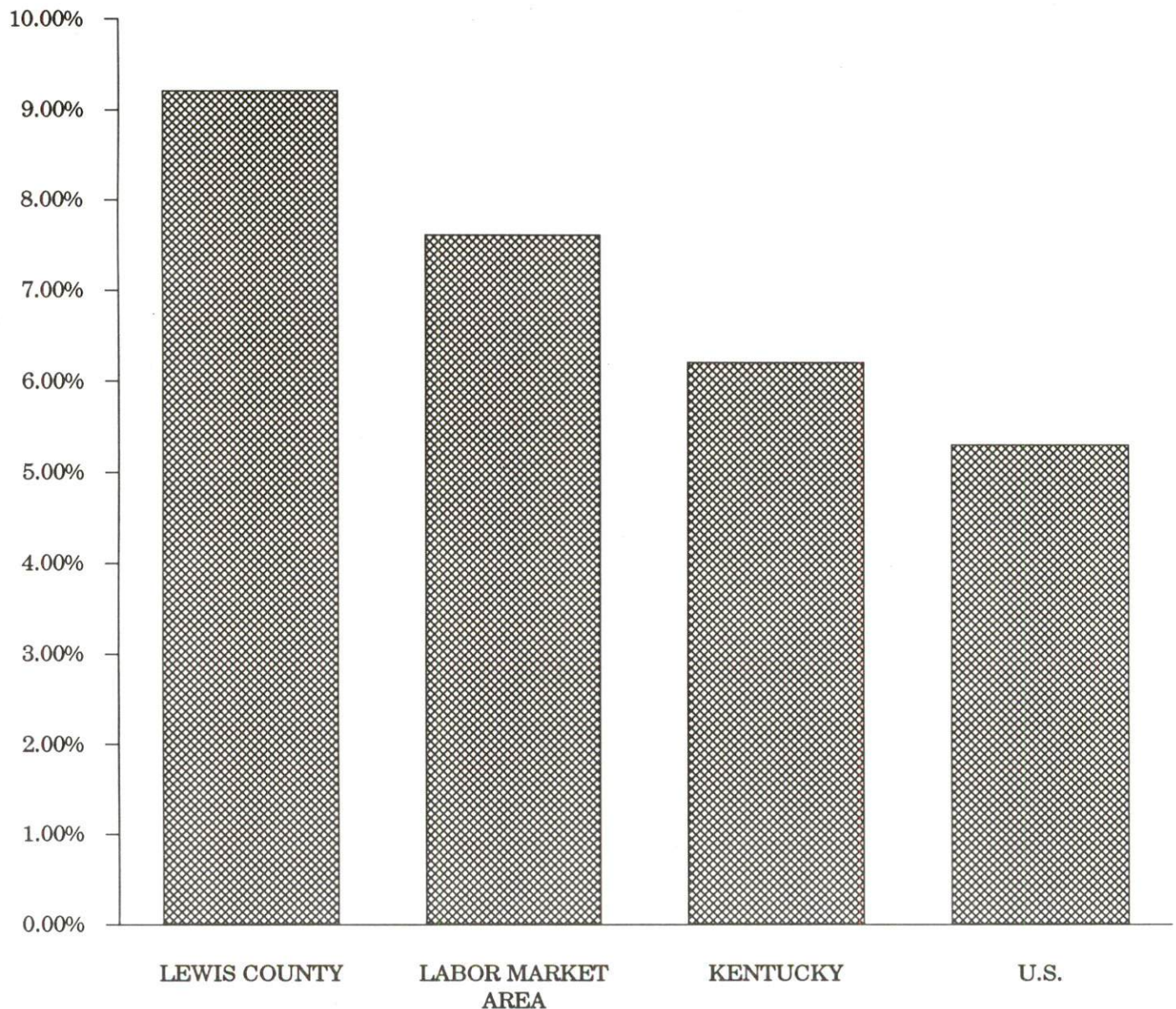


# LABOR FORCE CHARACTERISTICS OF RESIDENTS, 1989

	<u>Lewis County</u>	<u>Labor Market Area</u>
Civilian Labor Force	5,624	51,308
Employment	5,108	47,387
Unemployment	516	3,921
Rate of Unemployment (%)	9.2	7.6

Source: Kentucky Cabinet for Human Resources, Kentucky Labor Force Estimates, Annual Averages, 1989.

## UNEMPLOYMENT RATES 1989

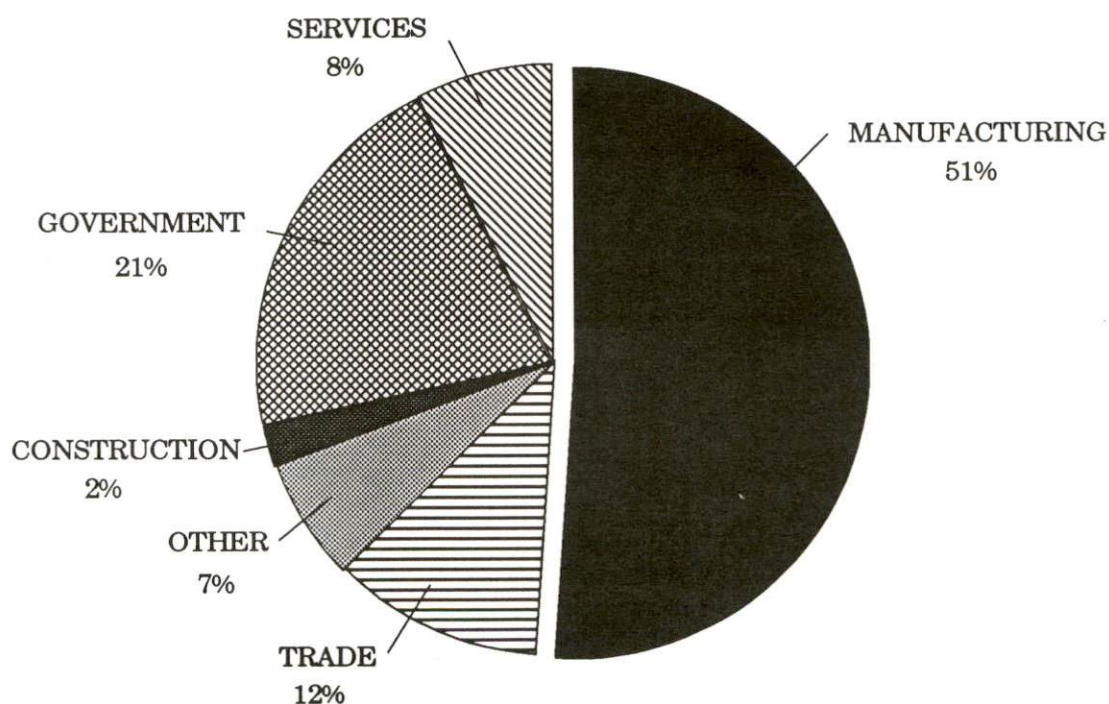


SELECTED COMPONENTS OF NONAGRICULTURAL EMPLOYMENT  
BY PLACE OF WORK, 1989

	<u>Lewis County</u>	<u>Labor Market Area</u>
All Industries (total)	2,210	31,416
Manufacturing	1,135	9,893
Wholesale & Retail Trade	254	7,182
Services	167	4,546
State/Local Government	458	6,201
Contract Construction	49	1,066

Note: Excludes domestic workers, railway workers, certain nonprofit corporations, majority of federal government workers, and self-employed workers.  
Source: Kentucky Cabinet for Human Resources, Average Monthly Workers Covered by Kentucky Unemployment Insurance Law, 1989.

LEWIS COUNTY



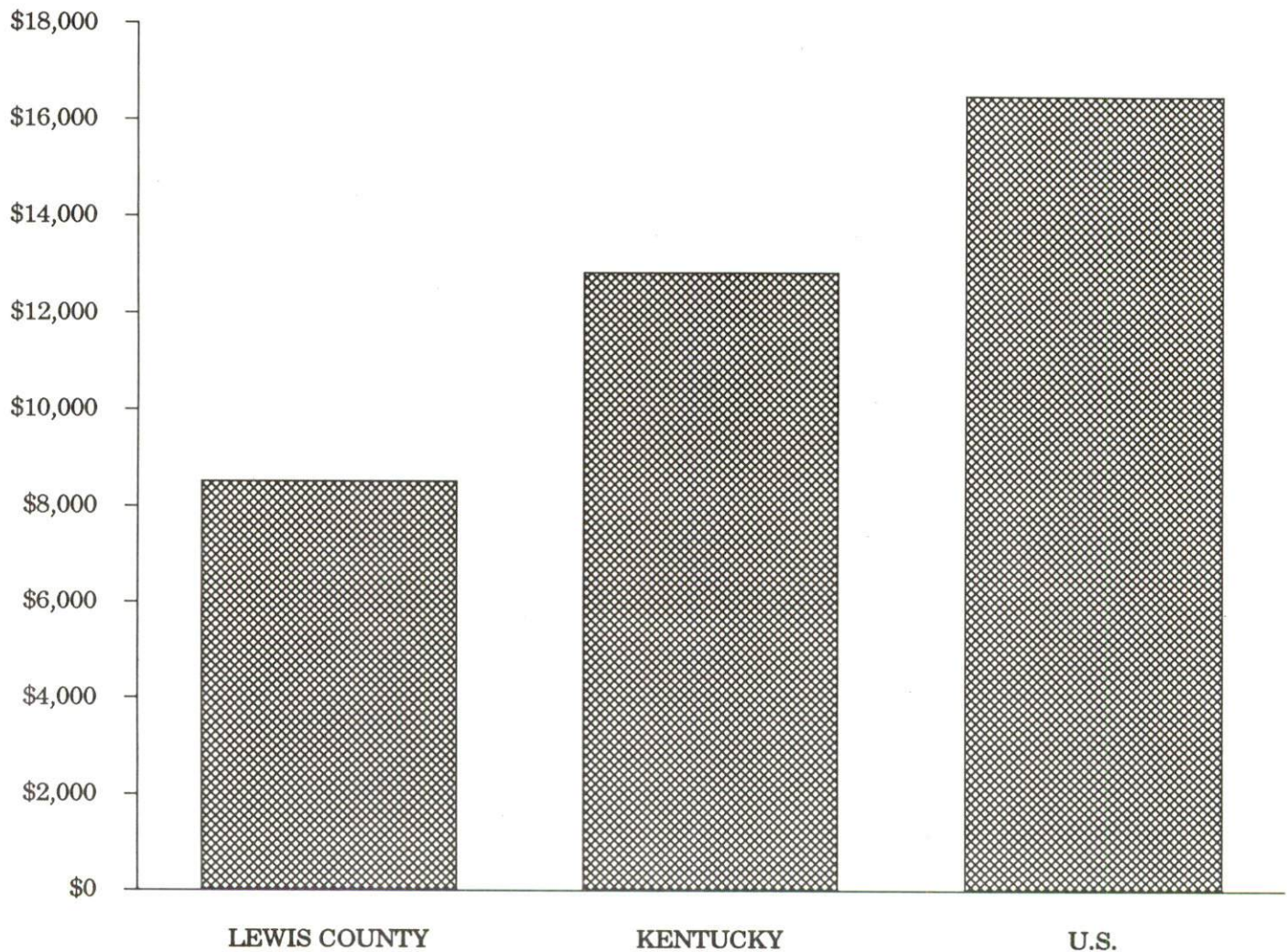


PER CAPITA PERSONAL INCOME

<u>Area</u>	<u>1984</u>	<u>1988</u>	<u>Percent Change</u>
Lewis County	\$6,996	\$8,498	21.5
Labor Market Area Range	\$6,996 - \$10,064	\$8,498 - \$12,786	-
Kentucky	\$10,411	\$12,830	23.2
U.S.	\$13,116	\$16,490	25.7

Sources: U.S. Bureau of Economic Analysis, Kentucky Economic Information System, April 1990.

PER CAPITA PERSONAL INCOME  
1988



## AVERAGE PLACEMENT WAGES

Lewis County is served by the Maysville local office of the Kentucky Department for Employment Services. The focus of the following data is on job placements made by the Maysville local office and may therefore be used as an indicator of the wages which employers in the area pay new employees. During the twelve months which ended on June 30, 1990, the local employment office filled 1,442 job openings in various occupational categories. The average hourly wage for selected occupational categories were:

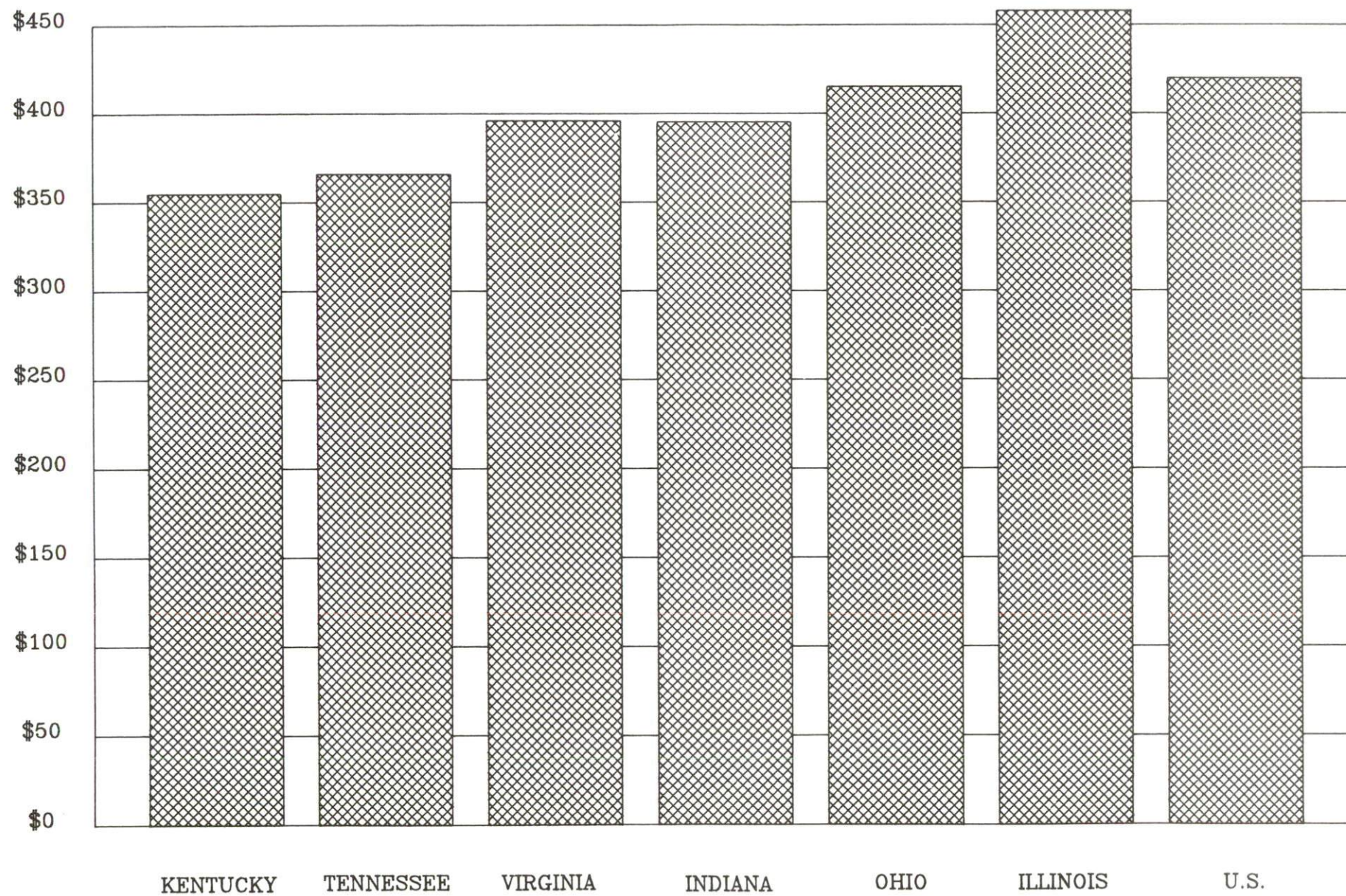
<u>OCCUPATIONAL CATEGORY</u>	<u>NUMBER OF PLACEMENTS</u>	<u>AVERAGE WAGE(\$)</u>
All Occupations	1,442	4.14
Clerical	329	3.71
Sales	41	3.66
Services (excluding domestic)	56	3.88
Agricultural, Fishery, Forestry, etc.	5	3.70
Processing	24	5.68
Machine Trades	300	4.35
Bench Work	355	4.14
Structural	111	5.08
Motor Freight/ Transportation	21	3.93
Packaging and Materials Handling	159	3.96

The Maysville local office also serves Bracken, Fleming, Mason, and Robertson Counties. The above occupational categories are taken from the Dictionary of Occupational Titles published by the U.S. Department of Labor.

Source: Kentucky Cabinet for Human Resources, Department for Employment Services.



AVERAGE WEEKLY WAGES OF WORKERS COVERED BY  
UNEMPLOYMENT INSURANCE - 1988





AVERAGE WEEKLY WAGES BY INDUSTRY  
BY PLACE OF WORK, 1988

	<u>Lewis County</u>	<u>Kentucky (State- Wide)</u>	<u>Tennessee</u>	<u>Virginia</u>
All Industries	\$233.20	\$352.31	\$363.12	\$392.56
Mining & Quarrying	0	603.27	495.85	596.88
Contract Construction	219.66	380.71	394.27	422.27
Manufacturing	219.59	464.92	416.73	452.60
Transportation, Communications & Public Utilities	223.35	468.17	485.13	554.17
Wholesale & Retail Trade	151.20	238.88	N/A	N/A
Finance, Insurance & Real Estate	258.40	401.17	269.27	466.23
Services	191.35	298.98	343.48	391.67
State/Local Government	319.09	377.81	403.21	457.00
	<u>Indiana</u>	<u>Ohio</u>	<u>Illinois</u>	<u>U. S.</u>
All Industries	\$392.63	\$411.08	\$454.10	\$416.33
Mining & Quarrying	635.77	579.73	674.62	660.40
Contract Construction	449.87	465.46	584.10	469.85
Manufacturing	532.06	569.98	555.83	517.62
Transportation, Communications & Public Utilities	502.69	519.17	584.83	542.33
Wholesale & Retail Trade	N/A	N/A	N/A	N/A
Finance, Insurance & Real Estate	406.58	444.33	579.88	532.52
Services	317.98	348.48	402.38	384.31
State/Local Government	395.31	428.10	453.12	442.71

N/A Not Available.

Note: The average weekly wage for each category includes the salaries and wages of all persons working for that type business. For example, the manufacturing category includes both production workers and administrative personnel. Excludes domestic workers, railway workers, certain nonprofit corporations, majority of federal government workers, and self-employed workers.

Source: Kentucky Cabinet for Human Resources, Average Weekly Wages of Workers Covered by Kentucky Unemployment Insurance Law, 1988. U.S. Department of Labor, Bureau of Labor Statistics, Average Annual Pay by State and Industry, August 29, 1989.



## EXISTING INDUSTRY

### LEWIS COUNTY MANUFACTURING FIRMS, THEIR PRODUCTS AND EMPLOYMENT

<u>Firm</u> <u>(Establishment date)</u>	<u>Product</u>	<u>1990</u> <u>Average Employment</u>
<b>Vanceburg</b>		
Deerfield Manufacturing Company (1989)	Steel stampings	10
Lewis County Herald Publishing Company (1924)	Newspaper	10
Moore and White Lumber Company, Inc. (1958)	Grade lumber, blocking, veneer logs	21
Rigdon Lumber Company (1982)	Precut lumber, wood chips, mulch	14
C.J. Thomas and Son, Inc. (1945)	Wood pallets, wood chips, lumber	24
U.S. Shoe Corporation (1957)	Ladies' shoes	530
U.S. Shoe Corporation, Component Plant (1967)	Cut and fit uppers for shoes	425
Vanceburg Hardwood, Inc. (1987)	Grade lumber, pallet cants	9
<b>Tollesboro</b>		
R.S. Salvage Company, Inc. (1964)	Pallets	5

**Sources:** Kentucky Cabinet for Economic Development, Division of Research and Planning; Vanceburg-Lewis County Industrial Authority.

## RECENT INDUSTRIAL DEVELOPMENTS

Sanymetal Company recently initiated operations in Vanceburg. The 40,000-square-foot facility produces metal panels for restrooms and currently employs 45 persons but will eventually employ 200 persons. Total investment approximated \$3 million.

## LABOR ORGANIZATIONS IN MANUFACTURING FIRMS

There are no labor unions representing manufacturing workers in Lewis County manufacturing firms at the present time.

## SELECTED INDUSTRIAL SERVICES

<u>Types of Services</u>	<u>Location</u>	<u>Mileage from Vanceburg</u>
Custom Data Processing	Lexington, Kentucky	89
Custom Plastics Producers	Ashland, Kentucky	55
Electric Motor Repair	Maysville, Kentucky	31
Grinding, Precision & Tool	Huntington, West Virginia	72
Heat Treating Facilities	Georgetown, Kentucky	88
	Lexington, Kentucky	89
Industrial Equipment & Supplies	Ashland, Kentucky	55
Industrial Gases	Huntington, West Virginia	72
Industrial Waste Removal	Portsmouth, Ohio	25
Machine Shops, Tool & Die	Maysville, Kentucky	31
	Flemingsburg, Kentucky	32
Metal Castings	Cynthiana, Kentucky	72
Metal Finishers	Georgetown, Kentucky	88
	Lexington, Kentucky	89
Metal Service Centers	Morehead, Kentucky	39
Millwrights	Lexington, Kentucky	89
Public Warehouse Facilities	Maysville, Kentucky	31

Sources: Kentucky Cabinet for Economic Development, Kentucky Directory of Selected Industrial Services, 1987; Division of Research and Planning.

## TRANSPORTATION

### Highways

Vanceburg is served by Kentucky Highway 10, a "AAA"-rated (80,000-pound gross load limit) trucking highway, and Kentucky Highways 8 and 59, both "AA"-rated (62,000-pound gross load limit) trucking highways. Lewis County is served by Kentucky 57, a "AAA"-rated trucking highway, and Kentucky 344, a "AA"-rated trucking highway. Access to Interstate 64 is 28 miles south of Vanceburg via Kentucky Highway 59.

Construction of the Alexandria-to-Ashland Highway (Kentucky Highway 546) is currently under way. The \$450 million highway begins at I-275 in northern Kentucky and extends to Vanceburg. Tentative plans also include construction of spurs from Vanceburg to I-64 at Grayson and to the Greenup Dam Bridge at Greenup.

#### HIGHWAY MILES FROM VANCEBURG, KENTUCKY, TO SELECTED MARKET CENTERS

City	Highway Miles	City	Highway Miles
Atlanta, GA	453	Los Angeles, CA	2,248
Baltimore, MD	482	Louisville, KY	162
Birmingham, AL	485	Nashville, TN	299
Chicago, IL	385	New Orleans, LA	819
Cincinnati, OH	100	New York, NY	671
Cleveland, OH	347	Pittsburgh, PA	311
Detroit, MI	358	St. Louis, MO	420
Knoxville, TN	260		

Note: Mileage computations are via the best interstate or primary highways, not necessarily the most direct route of travel.

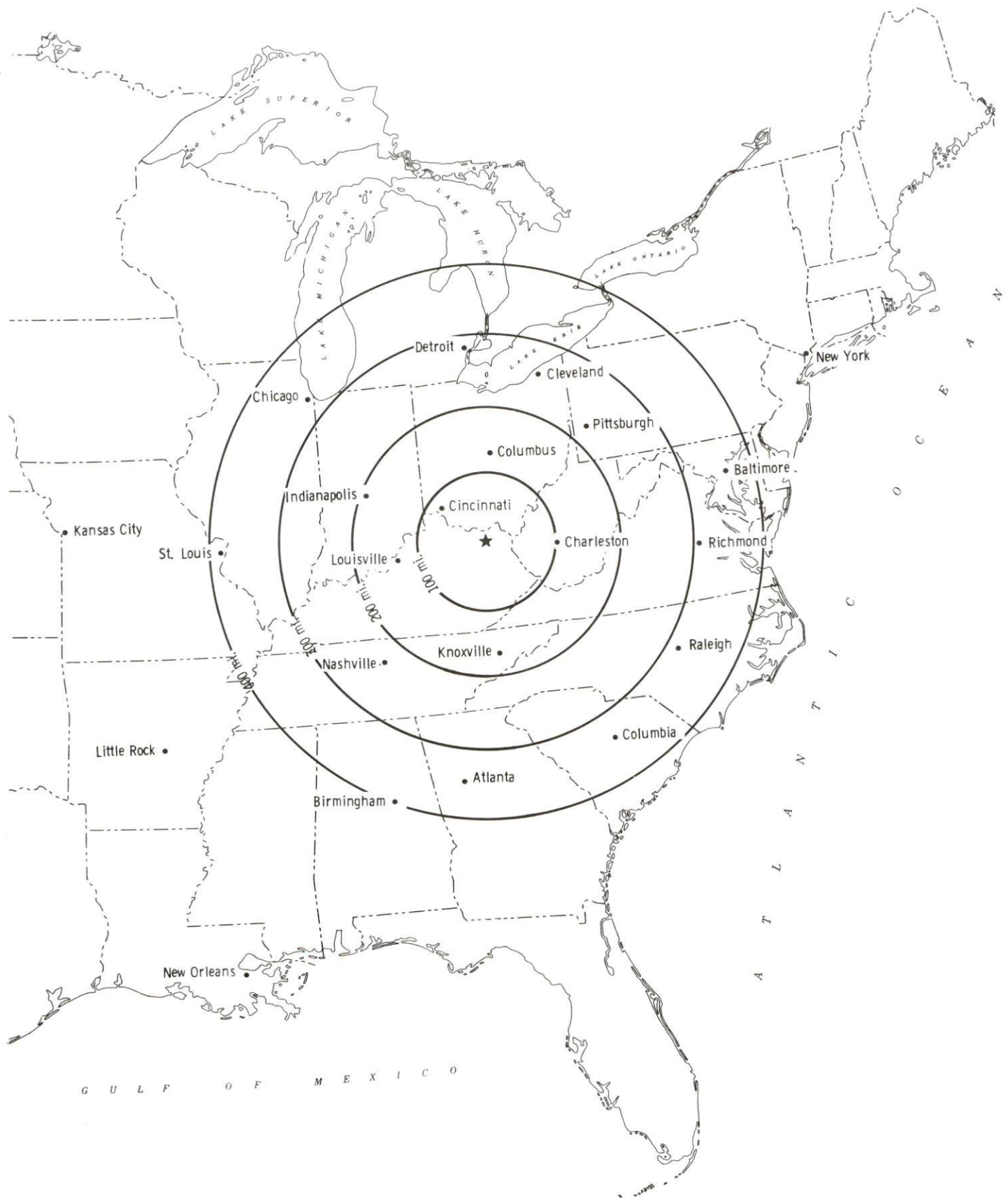
Sources: Rand McNally Deluxe Motor Carriers' Road Atlas, 1989. Official Kentucky Mileage Map, 1980.

### Truck Service

Twelve common carrier trucking firms provide interstate and/or intrastate service to Vanceburg.

Source: American Motor Carrier Directory, Fall 1990.

## Selected Market Centers





## Rail

CSX Transportation provides main line rail service to Vanceburg. Southern Railway System provides the nearest piggyback facilities at Georgetown, Kentucky, 88 miles southwest of Vanceburg.

For details on routing, schedules, rates, and services contact:

Manager  
Industrial Development  
CSX Transportation  
9420 Bunsen Parkway  
Suite 212  
Louisville, Kentucky 40220  
(502) 499-3025

## Air

### Nearest Small Craft Airport

Location:	Fleming-Mason Airport
Runways:	39 miles southwest of Vanceburg
Length:	1 paved
Traffic	5,000 feet
Control:	Segmented circle, wind cone
Lighting:	VASI, MIRL, beacon - sundown to sunrise, runway lights
Services:	100LL and jet-A fuel; minor A & P repairs; hangar; tie-down; flight instruction, taxi service, attended 24 hours daily

### Nearest Scheduled Commercial Airline Service

Location:	Tri-State Airport (Walker-Long Field)
	3 miles southwest of Huntington, West Virginia; 69 miles southeast of Vanceburg
Air Service:	ComAir, USAir, C.C. Air
Daily Arrivals & Departures:	34

## Water

The Ohio River, which forms the northern boundary of Lewis County, provides Vanceburg with excellent water transportation capabilities. The Maysville-Mason County Port Authority plans to develop a public port on the Ohio River at Maysville, 31 miles west of Vanceburg. The planned port will serve as a general cargo facility.

## UTILITIES

### Electricity

Company serving Vanceburg and a small portion of Lewis and Greenup Counties - Vanceburg Electric System  
Source of power - City of Hamilton, Ohio and Kentucky Utilities  
For industrial rates contact:

Vanceburg Electric System  
611 Front Street  
P.O. Box 489  
Vanceburg, Kentucky 41179  
(606) 796-2641

Vanceburg Electric System recently constructed a 14,000 KVA-138,000 volt substation and 138 KV transmission line in Lewis County. The Electric System also constructed a 2,500 KVA-34,500 volt substation at the industrial park. Total cost of these projects was approximately \$275,000.

Company serving Lewis County - Fleming-Mason Rural Electric Cooperative Corporation  
Source of power - East Kentucky Power Cooperative  
For industrial rates contact:

Industrial Development Division  
East Kentucky Power Cooperative  
P. O. Box 707  
Winchester, Kentucky 40391  
(606) 744-4812

and/or

Fleming-Mason Rural Electric  
Cooperative Corporation  
Elizaville Road  
P.O. Drawer 328  
Flemingsburg, Kentucky 41041  
(606) 845-2661

### Natural Gas

Company serving Vanceburg and surrounding vicinity - Vanceburg Utilities System  
Source of supply - Columbia Gas Transmission Company  
For rates and supplies contact:

Vanceburg Utilities System  
P.O. Box 489  
Vanceburg, Kentucky 41179  
(606) 796-2641

The Vanceburg Utilities System recently completed construction of a new four-inch gas line at the Lewis County Industrial Park. Total construction cost was \$66,000.

Company serving Tollesboro - Western Lewis-Rectorville Water and Gas District

Source of supply - Columbia Gas Transmission Corporation

For rates and supplies contact:

Western Lewis-Rectorville  
Water and Gas District  
Route 4  
Maysville, Kentucky 41056  
(606) 564-9333

### Public Water Supply

Company serving Vanceburg- Vanceburg Utilities System  
611 Front Street  
P.O. Box 489  
Vanceburg, Kentucky 41179  
(606) 796-2641

Source - Two wells  
Treatment plant capacity - 720,000 gallons per day  
Average daily consumption - 240,000 gallons  
Peak daily consumption - 270,000 gallons  
Storage capacity - 600,000 gallons  
Water pressure - 40 psi to 50 psi

The Vanceburg Utilities System recently completed construction of a new 250,000-gallon water storage tank. The water department plans to install 3.5 miles of six-inch water line and to drill a new well.

Name of water district - Western Lewis-Rectorville Water and Gas District  
Route 4  
Maysville, Kentucky 41056  
(606) 564-9333

Source of supply of treated water - Two wells  
Capacity of treatment plant - 220,000 gallons per day  
Average daily consumption - 200,000 gallons  
Peak daily consumption - 300,000 gallons  
Storage capacity - 300,000 gallons  
Water pressure - 35 psi to 50 psi

### Raw Water

Surface water sources - Ohio River and Cabin Creek  
Average discharge - Ohio River at Greenup Dam, Kentucky - 89,440 cfs  
(21-year record, USGS); Cabin Creek near Tollesboro - 30.3 cfs  
(17-year record, USGS)  
Expected ground water yield - 500 to 1,000 gpm along the Ohio River;  
5 to 50 gpm in isolated bands throughout the county; 5 gpm or less  
over the remainder of the county

## Sewerage

Company serving Vanceburg - Vanceburg Utilities System  
611 Front Street  
P.O. Box 489  
Vanceburg, Kentucky 41179  
(606) 796-2641

Design capacity - 250,000 gallons per day  
Average daily flow - 200,000 gallons  
Type of treatment - Primary  
Treated effluent discharged into - Ohio River

Vanceburg Utilities System plans to construct a new wastewater treatment plant. The new facility will have a capacity of 410,000 gallons-per-day. Installation of a sewage pump station is also included in the plans of this \$1.1 million project which is scheduled for completion in 1991. The existing treatment plant will be utilized as a holding tank.



## CLIMATE

### Lewis County

#### Temperature

Normal (30-year record)	53.40 degrees
Average annual 1988	53.40 degrees
Record highest, July 1988 (27-year record)	103.00 degrees
Record lowest, January 1977 (27-year record)	-25.00 degrees
Normal heating degree days (30-year record)	5,247
(Heating degree day totals are the sums of negative departures of average daily temperatures from 65 degrees F.)	

#### Precipitation

Normal (30-year record)	40.14 inches
Mean annual snowfall (41-year record)	23.50 inches
Total precipitation 1988	39.97 inches
Mean number days precipitation (.01 inch or more) (41-year record)	128.40
Mean number days thunderstorms (41-year record)	42.50

#### Prevailing winds (through 1963)

South-Southwest

#### Relative Humidity (26-year record)

1 a.m.	77 percent
7 a.m.	81 percent
1 p.m.	59 percent
7 p.m.	63 percent

Source: U.S. Department of Commerce, Environmental Science Services Administration, Climatological Data, 1988. Station of record: Cincinnati, Ohio, Greater Cincinnati Airport.

## **Structure**

The City of Vanceburg is governed by a mayor and six council members. The mayor is elected to a four-year term while the council members serve two-year terms each. Lewis County is governed by a county judge/executive and three magistrates. Each county official serves a four-year term.

## **Planning and Zoning**

There is no planning and zoning commission in Lewis County at the present time.

Mandatory state codes enforced - Kentucky Plumbing Code, National Electric Code, Kentucky Boiler Regulations and Standards, Kentucky Building Code (modeled after BOCA code)

## **Local Fees and Licenses**

The City of Vanceburg levies a one percent occupational license tax on all wages, salaries, and commissions of individuals employed within the city and on net profits of businesses located within the city. An annual business license fee of \$25.50 is also required to operate a business in Vanceburg.

## State and Local Property Taxes

All property in Kentucky, except items exempted by the state constitution, is taxed by the state. Property which also may be taxed by local jurisdictions includes land and buildings, finished goods inventories, automobiles, trucks, office furniture and office equipment. Local taxing jurisdictions in Kentucky include counties, cities, and school districts.

All property in Kentucky is assessed at 100 percent of fair cash value.

### COMBINED STATE AND LOCAL RATES PER \$100 VALUATION, 1989

	Vanceburg	Unincorporated Lewis County
Land and Buildings	\$0.8010	\$0.6710
Manufacturing		
Machinery	0.1500	0.1500
Pollution Control		
Equipment	0.1500	0.1500
Inventories		
Raw Materials	0.0010	0.0010
Goods in Process	0.0010	0.0010
Finished Goods	0.6298	0.4898
Automobiles & Trucks	1.0758	0.9358
Other Tangible		
Personal Property	1.0788	0.9388
Intangibles (Accounts receivable*, money in hand, stock, notes, bonds)	0.2500	0.2500
Goods Stored in Public		
Warehouses in Transit		
Status	0.0010	0.0010
Private Leaseholds in		
Industrial Revenue		
Bond Financed		
Facilities	0.0150	0.0150

Three fire protection districts in Lewis County levy a special tax on real and personal property within their boundaries. The rate is \$0.1000 per \$100 valuation.

\* Accounts receivable are taxed at 85 percent of face value, for an effective rate of \$0.2125 per \$100 valuation.



## EDUCATION

### Public Schools

#### Lewis County

Total Enrollment (Fall, 1989)	2,782
Pupil-Teacher Ratio (1988-89)	18.4-1
Percent High School Graduates to College (1988-89)	38.0
Expenditures Per Pupil (1988-89)	\$2,393.89

Recent improvement projects at Lewis County School System include construction of a six-classroom addition and one trainable mentally-handicapped facility at Lewis County Central Elementary, construction of new classroom facilities for science, art and mentally-handicapped, and construction of a five-classroom addition at Tollesboro Elementary School. Total combined cost of these recent improvements approximated \$2 million. In addition, the School System plans to construct an eight-classroom addition at Garrison Elementary. The \$1.5 million project includes construction of a physical education facility and a library.

### Area Colleges and Universities

<u>Name</u>	<u>Location (Miles distant)</u>	<u>Enrollment (Fall, 1989)</u>
Shawnee State University	Portsmouth, Ohio (25)	2,928
Maysville Community College	Maysville, Kentucky (31)	1,060
Morehead State University	Morehead, Kentucky (39)	7,962
Ohio University (Ironton Campus)	Ironton, Ohio (49)	1,375
Ashland Community College	Ashland, Kentucky (55)	2,771
Marshall University	Huntington, West Virginia (72)	9,762
Georgetown College	Georgetown, Kentucky (88)	1,562
Lexington Community College	Lexington, Kentucky (89)	3,928
Transylvania University	Lexington, Kentucky (89)	1,076
University of Kentucky	Lexington, Kentucky (89)	22,957

## Vocational Training

Vocational training is available at both the state vocational-technical schools and the area vocational education centers. The state vocational-technical schools are post-secondary institutions. The area vocational education centers are designed to supplement the curriculum of high school students. Both the state vocational-technical schools and the area vocational education centers offer evening courses to enable working adults to upgrade current job skills.

Arrangements can be made to provide training in the specific production skills required by an industrial plant. Instruction may be conducted either in the vocational school or in the industrial plant, depending upon the desired arrangement and the availability of special equipment.

### Bluegrass State Skills Corporation

The Bluegrass State Skills Corporation, an independent public corporation created and funded by the Kentucky General Assembly, provides programs of skills training to meet the needs of business and industry from entry level to advanced training, and from upgrading present employees to retraining experienced workers.

The Bluegrass State Skills Corporation is the primary source for skills training assistance for a new or existing company. The Corporation works in partnership with other employment and job training resources and programs, as well as Kentucky's economic development activities, to package a program customized to meet the specific needs of a company.

<u>Vocational School</u>	<u>Location (Miles distant)</u>	<u>Cumulative Enrollment 1988-1989</u>
Rowan State Vocational- Technical School	Morehead, Kentucky (39)	518
Lewis County Area Vocational Education Center	Vanceburg, Kentucky	368

## OTHER LOCAL FACILITIES

### Local Medical Personnel

Physicians - 5  
Dentists - 2

### Hospitals

<u>General Hospital</u>	<u>Location</u>	<u>Beds</u>
Southern Ohio Medical Center	Portsmouth, Ohio, 25 miles from Vanceburg	473
Meadowview Regional Hospital	Maysville, Kentucky, 31 miles from Vanceburg	111

#### Southern Ohio Medical Center

Medical staff - 110 active staff physicians, 280 registered nurses,  
80 licensed practical nurses

#### Medowview Regional Hospital

Medical staff - 20 active staff physicians, 77 registered nurses,  
12 licensed practical nurses

### Other Medical Facilities and Services

Bel Air Clinic  
Conley's Ambulance Service  
Lewis County Health Department  
Lewis County Primary Care Center  
Vanceburg Health Care Center, Inc.

### Banks and Savings and Loan Associations

Citizens Deposit Bank and Trust  
First National Bank of Lewis County

### Newspapers

Lewis County Herald (weekly)

### Telephone Service

General Telephone Company



## RECREATION

### Local

Public recreational facilities in Vanceburg are located at the Boat Dock Park, the Lewis County schools, and Lock and Dam 32. The Boat Dock Park, located on a stream off the Ohio River, contains two lighted tennis courts, a basketball court, a volleyball court, a shelter house with picnic tables and grills, and playground equipment. A major renovation and redevelopment of Boat Dock Park in Vanceburg is planned. Improvements proposed include the construction of a 4,000-square-foot shelter house, the installation of several picnic tables and grills, the upgrading of tennis courts, development of two baseball diamonds, parking space added, and other facilities. Total cost of the project is estimated at \$1.1 million. The Lock & Dam 32 Park includes a softball diamond, horseshoe pitching, and picnic facilities on the Ohio River. The local schools offer a football field, a track and baseball fields.

The Ohio River borders Lewis County on the north and provides ideal boating, fishing and other water sport opportunities. Construction of a 21-slip boat docking facility including a fishing pier was recently completed on the Ohio River.

The July Jubilee is a week-long celebration held annually. The celebration includes a beauty pageant, baby show, pet show, athletic events, street vendors, gospel singing, 50s dance, teen dance, carnival, fireworks, little league all-star baseball games, punch-out contest, and Bluegrass music.

The Sorghum Festival is held each year in September. The two-day event includes crafts, dancing, live music, and street vendors.

### Area (Within 60 miles)

Blue Licks Battlefield State Park  
Carter Caves State  
Resort Park  
Cave Run Lake  
Daniel Boone National Forest  
Grayson Lake State Park  
Greenbo Lake State Resort Park  
Yatesville Lake

## COMMUNITY IMPROVEMENTS

### Recent

Sanymetal Company recently initiated operations in Vanceburg. The 40,000-square-foot facility produces metal panels for restrooms and currently employs 45 persons but will eventually employ 200 persons. Total investment approximated \$3 million.

The Alexandria-Ashland Highway (Kentucky Highway 546) was recently completed from Interstate 275 north of Alexandria, Kentucky to Vanceburg.

Recent improvement projects at the Vanceburg Utilities System included moving a 22,000-gallon-per-day package sewage treatment plant from west Vanceburg to the Lewis County Industrial Park, construction of a new four-inch gas line at the Industrial Park, and construction of a 250,000-gallon water storage tank.

Vanceburg Electric System recently constructed a 14,000 KVA-138,000 volt substation and 138 KV transmission line in Lewis County. The Electric System also constructed a 2,500 KVA-34,500 volt substation at the industrial park. Total cost of these projects was approximately \$275,000.

Recent improvement projects at Lewis County School System include construction of a six-classroom addition and one trainable mentally-handicapped facility at Lewis County Central Elementary, construction of new classroom facilities for science, art and mentally-handicapped, and construction of a five-classroom addition at Tollesboro Elementary School. Total combined cost of these improvements approximated \$2 million.

Construction of a 21-slip boat docking facility including a fishing pier was recently completed on the Ohio River.

### Planned

Planned projects for the Vanceburg Utilities System include the installation of 3.5 miles of six-inch water line, drilling a new well, and the construction of a 410,000-gallon wastewater treatment plant including a sewage pump station. These \$2.2 million projects are scheduled for completion in 1991.

The Lewis County School System plans to construct an eight-classroom addition at Garrison Elementary. The \$1.5 million project includes construction of a physical education facility and a library.

A major renovation and redevelopment of Boat Dock Park in Vanceburg is planned. Improvements proposed include the construction of a 4,000-square-foot shelter house, the installation of several picnic tables and grills, the upgrading of tennis courts, development of two baseball diamonds, parking space added, and other facilities. Total cost of the project is estimated at \$1.1 million.

The City of Vanceburg plans to construct a new municipal building which will provide office space and a conference room. Total cost of the project will approximate \$125,000.

Phase Three of the Grant Hill Neighborhood Project is planned. The redevelopment project consists of removing dilapidated housing, improving existing structures, landscaping lots, and reconstructing new sidewalks and streets.