

1991

# Industrial Resources: Logan County

Kentucky Library Research Collection  
Western Kentucky University, [spcol@wku.edu](mailto:spcol@wku.edu)

Follow this and additional works at: [https://digitalcommons.wku.edu/logan\\_cty](https://digitalcommons.wku.edu/logan_cty)

 Part of the [Business Administration, Management, and Operations Commons](#), [Growth and Development Commons](#), and the [Infrastructure Commons](#)

---

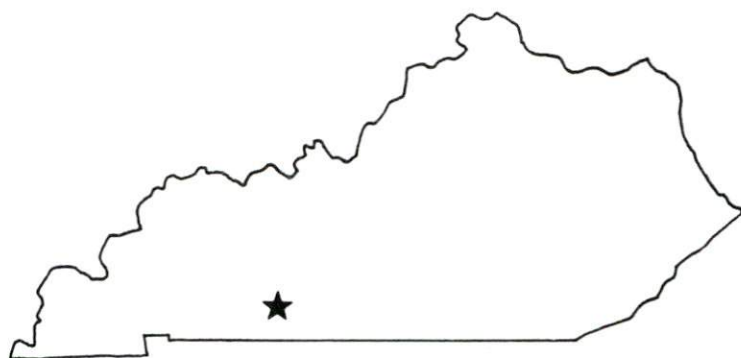
## Recommended Citation

Kentucky Library Research Collection, "Industrial Resources: Logan County" (1991). *Logan County*. Paper 6.  
[https://digitalcommons.wku.edu/logan\\_cty/6](https://digitalcommons.wku.edu/logan_cty/6)

This Report is brought to you for free and open access by TopSCHOLAR®. It has been accepted for inclusion in Logan County by an authorized administrator of TopSCHOLAR®. For more information, please contact [topscholar@wku.edu](mailto:topscholar@wku.edu).

# *Resources for Economic Development*

## Logan County



**KENTUCKY**  
*Open for Business*

---

RESOURCES FOR ECONOMIC DEVELOPMENT  
LOGAN COUNTY, KENTUCKY

Prepared by  
The Kentucky Cabinet for Economic Development  
Division of Research and Planning  
in cooperation with  
Logan County Chamber of Commerce

1991

Division Director - Pamela K. Riley; program manager - Keith Roberts; research - Jane E. Sullivan; clerical - Wanda Sharp; graphics - Robert Owens, Pat Coleman; cartography - Edwin Scott, Dave Clark. Cost of printing paid from state funds.

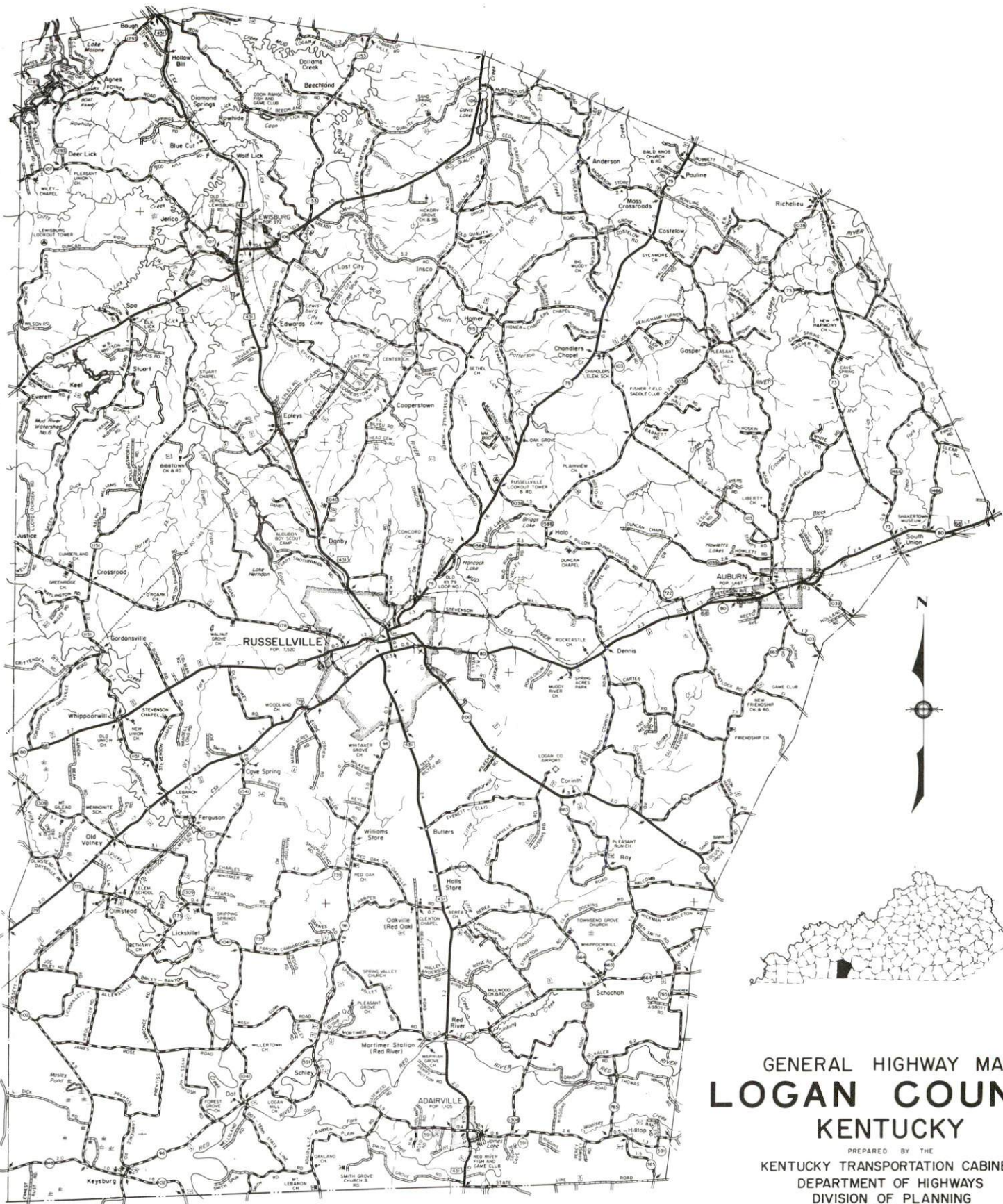


## TABLE OF CONTENTS

<u>Chapter</u>	<u>Page</u>
LOGAN COUNTY, KENTUCKY - A RESOURCE PROFILE.....	1
THE LABOR MARKET STATISTICS .....	2
Labor Market Area Map.....	2
Population .....	3
Population Projections.....	3
Estimated Labor Supply.....	3
Labor Force Characteristics of Residents, 1989 .....	4
Selected Components of Nonagricultural Employment, by Place of Work, 1989 .....	5
Per Capita Personal Income .....	6
Average Placement Wages .....	7
Average Weekly Wages of Workers Covered by Unemployment Insurance 1988 - Bar Chart .....	8
Average Weekly Wages by Industry, by Place of Work, 1988 .....	9
EXISTING INDUSTRY .....	10
Logan County Manufacturing Firms, Their Products and Employment .....	10
Labor Organizations in Manufacturing Firms.....	11
Selected Industrial Services .....	12
TRANSPORTATION.....	13
Highways .....	13
Truck Service .....	13
Selected Market Location Map.....	14
Rail.....	15
Air.....	15
UTILITIES .....	16
Electricity .....	16
Natural Gas .....	17
Public Water Supply .....	17
Sewerage .....	19
CLIMATE.....	21

<u>Chapter</u>	<u>Page</u>
LOCAL GOVERNMENT .....	22
Structure .....	22
Planning and Zoning .....	22
Local Fees and Licenses .....	22
State and Local Property Taxes .....	23
Combined State and Local Rates Per \$100 Valuation, 1989.....	23
EDUCATION .....	25
Public Schools .....	25
Area Colleges and Universities .....	25
Vocational Training .....	26
OTHER LOCAL FACILITIES .....	27
Local Medical Personnel .....	27
Hospitals .....	27
Other Medical Facilities and Services .....	27
Banks and Savings & Loan Associations .....	27
Newspapers .....	27
Telephone Service .....	27
RECREATION.....	28
COMMUNITY IMPROVEMENTS .....	29





GENERAL HIGHWAY MAP  
**LOGAN COUNTY**  
KENTUCKY

PREPARED BY THE  
KENTUCKY TRANSPORTATION CABINET  
DEPARTMENT OF HIGHWAYS  
DIVISION OF PLANNING  
IN COOPERATION WITH THE  
U.S. DEPARTMENT OF TRANSPORTATION  
FEDERAL HIGHWAY ADMINISTRATION

SCALE 1:25,000  
0 1 2 3 4 MILES



## LOGAN COUNTY, KENTUCKY - A RESOURCE PROFILE

Logan County, with a 1988 estimated population of 25,400, is located in southwestern Kentucky, on the Kentucky/Tennessee border. Logan County, with a land area of 556 square miles, has a terrain ranging from gently rolling to hilly. Russellville, the county seat of Logan County, is situated in the central portion of the county. With a 1988 estimated population of 8,540, Russellville is located 51 miles north of Nashville, Tennessee; 148 miles southwest of Louisville, Kentucky; and 304 miles southeast of St. Louis, Missouri.

Adairville, located 12 miles south of Russellville, had a 1988 estimated population of 1,030; Auburn, located 11 miles east of Russellville, had a 1988 estimated population of 1,600; and Lewisburg, 10 miles north of Russellville, had a 1988 estimated population of 1,390.

**The Economic Framework** - The total number of Logan County residents employed in 1989 averaged 11,226. Manufacturing firms in the county reported 4,176 employees; wholesale and retail trade provided 1,321 jobs; 788 people were employed in service occupations; state and local government accounted for 814 employees; and contract construction firms provided 138 jobs.

**Labor Supply** - There is a current estimated labor supply of 20,810 persons available for industrial jobs in the labor market area. In addition, from 1990 through 1994, 12,141 young persons in the area will become 18 years of age and potentially available for industrial jobs.

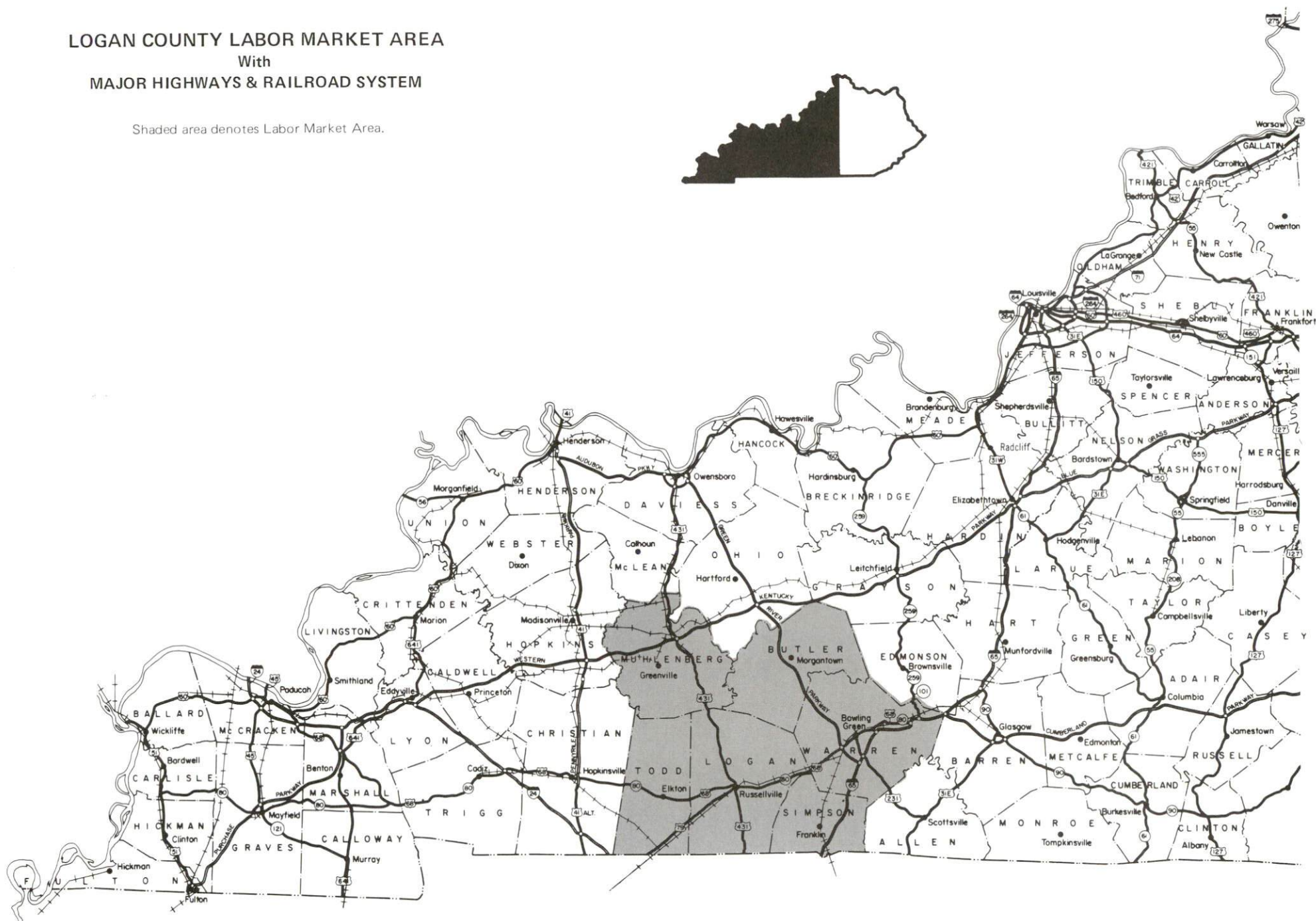
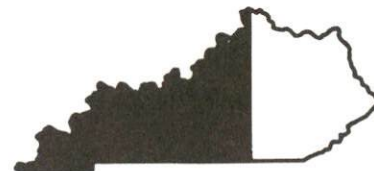
**Transportation** - U.S. Highways 68, 79, and 431, and Kentucky Highways 79 and 100 are "AAA"-rated trucking highways serving Logan County. Interchanges with Interstate 65 are located 26 miles southeast of Russellville via Kentucky 100 and 30 miles northeast of Russellville via U.S. Highway 68 and Green River Parkway. Interstate 24 is accessible 27 miles southwest of Russellville via U.S. Highway 79. Twenty-seven common carriers provide Logan County with interstate and/or intrastate service. The Nashville Metropolitan Airport, located 57 miles south of Russellville, provides the nearest scheduled commercial airline service. The Russellville-Logan County Airport, located five miles southeast of Russellville, maintains one paved 4,000-foot runway. Rail service is provided to Russellville and Auburn by the R. J. Corman Railroad Corporation.

**Power and Fuel** - Electric power is provided to Russellville by the Russellville Electric Plant Board. Adairville, Lewisburg and part of Logan County are served by Pennyrite Rural Electric Cooperative Corporation. Auburn and part of Logan County are served by Warren Rural Electric Cooperative Corporation. Natural gas is provided to Russellville, Adairville and Auburn by Western Kentucky Gas Company.

**Education** - Primary and secondary education is provided to Logan County by the Russellville Independent School System and the Logan County School System. The Russellville Independent School System is accredited by the Southern Association of Colleges and Schools. Twelve institutions of higher learning are located within 55 miles of Russellville. The Bowling Green State Vocational-Technical School, located 29 miles east of Russellville at Bowling Green, and the Russellville Area Vocational Education Center, in Russellville, provide vocational training for Logan County.

# LOGAN COUNTY LABOR MARKET AREA With MAJOR HIGHWAYS & RAILROAD SYSTEM

Shaded area denotes Labor Market Area.





## LABOR MARKET STATISTICS

The Logan County Labor Market Area includes Logan County and the adjoining Kentucky counties of Butler, Muhlenberg, Simpson, Todd and Warren. Workers may also be drawn from nearby counties in Tennessee.

POPULATION			
	1988*	1980	1970
Labor Market Area	173,200	165,815	140,814
Adairville	1,030	1,105	973
Auburn	1,600	1,467	1,160
Lewisburg	1,390	972	651
Russellville	8,540	7,858	6,456
Logan County	25,400	24,138	21,793

\* Population estimates.

Sources: U.S. Department of Commerce, Bureau of the Census, August 1989; November 1989.

POPULATION PROJECTIONS				
	2000	2010	2020	2030
Labor Market Area	193,450	205,930	214,220	216,810
Logan County	28,260	29,980	31,330	32,200

Source: University of Louisville, Urban Studies Center, State Data Center.

ESTIMATED LABOR SUPPLY					
	Current			Future	
	Total	Unemployed	Employed Part-Time	Not in Labor Force	Becoming 18 years of age 1990 thru 1994
Labor Market Area*	20,810	5,785	9,110	5,915	12,141
Logan County	2,751	800	1,035	916	1,804

\* Additional workers may be drawn from other nearby counties.

Note: Unemployed - persons unemployed and actively seeking work; Employed Part-Time - persons employed but working only 14 to 26 weeks per year; Not in Labor Force - represents the number of persons who would enter the labor force if suitable employment were available (based on the assumption that persons in Kentucky would like to participate in the labor force in the same proportion that they do nationally).

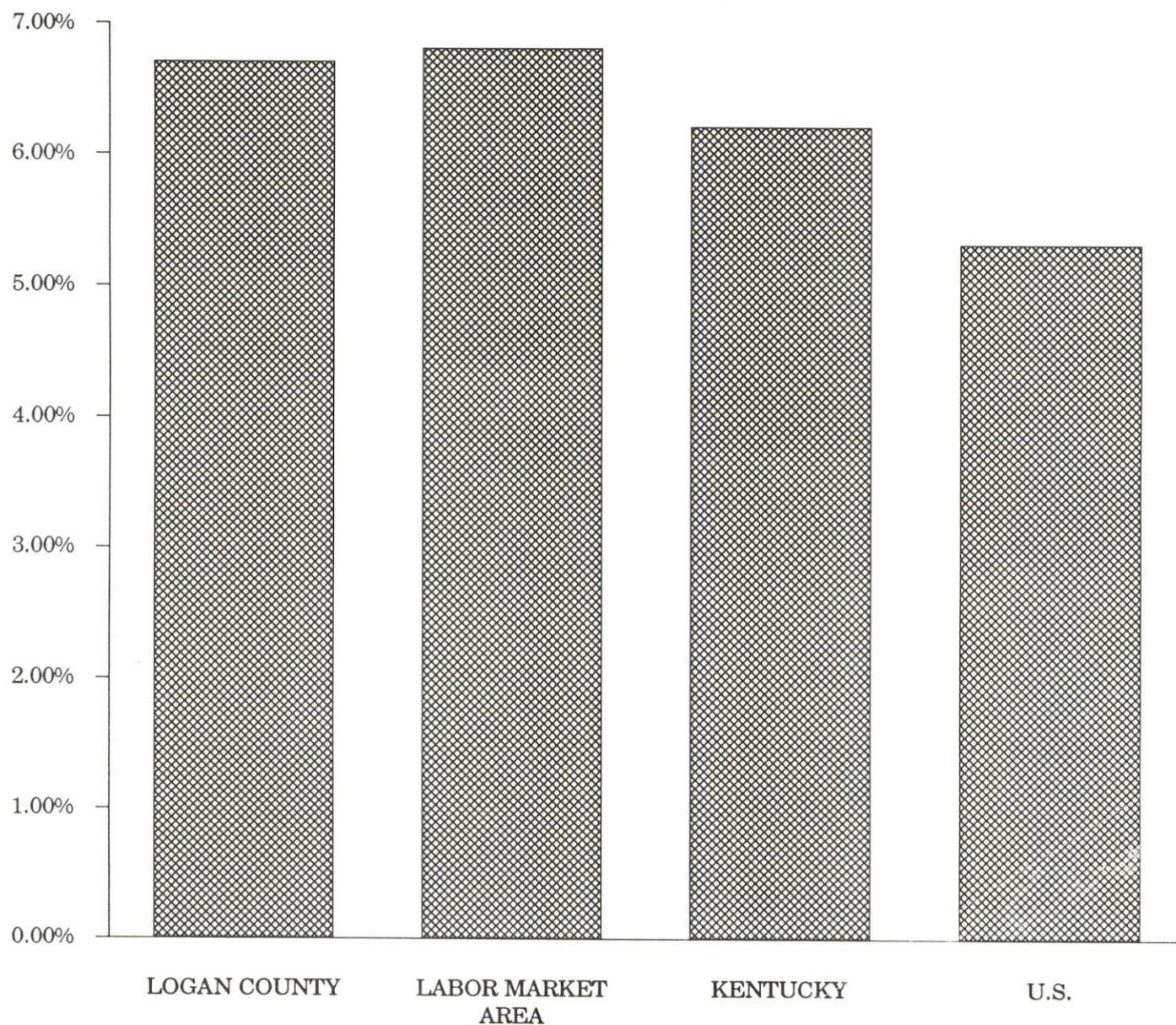
Sources: Kentucky Cabinet for Human Resources, Kentucky Labor Supply Estimates by County, 1989. Kentucky Cabinet for Economic Development, Future Labor Supply Becoming 18 Years of Age, 1990 thru 1994.

# LABOR FORCE CHARACTERISTICS OF RESIDENTS, 1989

	Logan County	Labor Market Area
Civilian Labor Force	12,026	85,299
Employment	11,226	79,514
Unemployment	800	5,785
Rate of Unemployment (%)	6.7	6.8

Source: Kentucky Cabinet for Human Resources, Kentucky Labor Force Estimates, Annual Averages, 1989.

## UNEMPLOYMENT RATES 1989



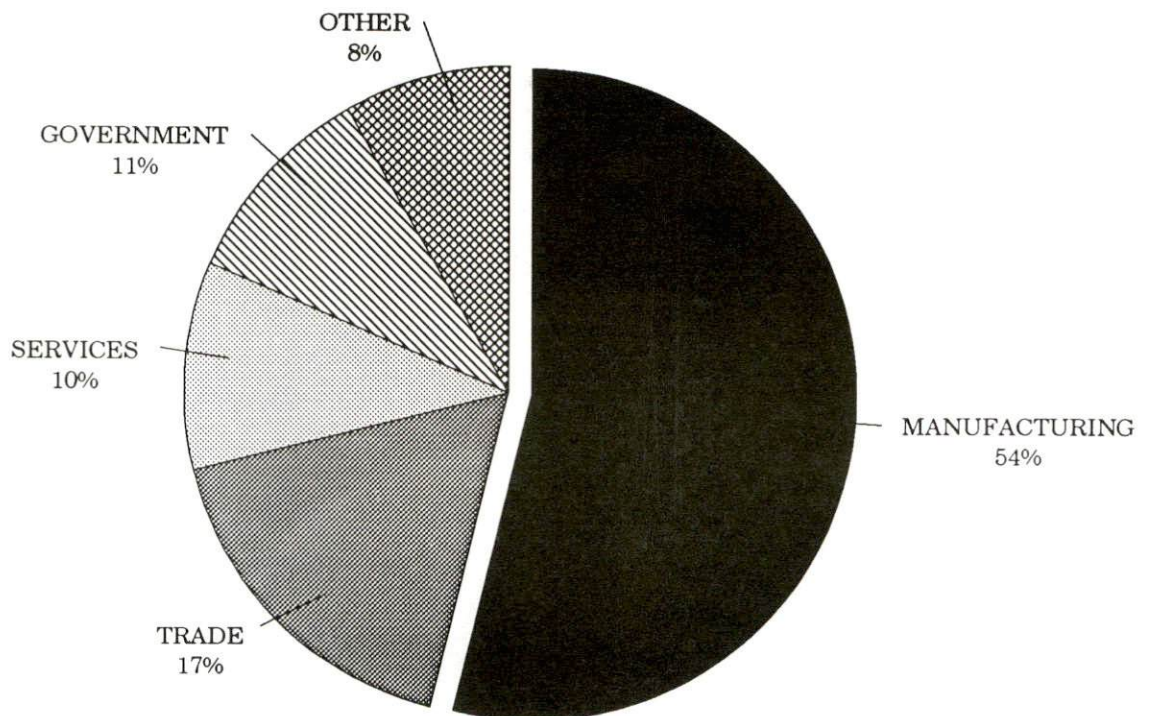


SELECTED COMPONENTS OF NONAGRICULTURAL EMPLOYMENT  
BY PLACE OF WORK, 1989

	Logan County	Labor Market Area
All Industries (total)	7,719	62,509
Manufacturing	4,176	19,501
Wholesale & Retail Trade	1,321	16,101
Services	788	10,296
State/Local Government	814	8,376
Contract Construction	138	2,382

Note: Excludes domestic workers, railway workers, certain nonprofit corporations, majority of federal government workers, and self-employed workers.  
Source: Kentucky Cabinet for Human Resources, Average Monthly Workers Covered by Kentucky Unemployment Insurance Law, 1989.

LOGAN COUNTY



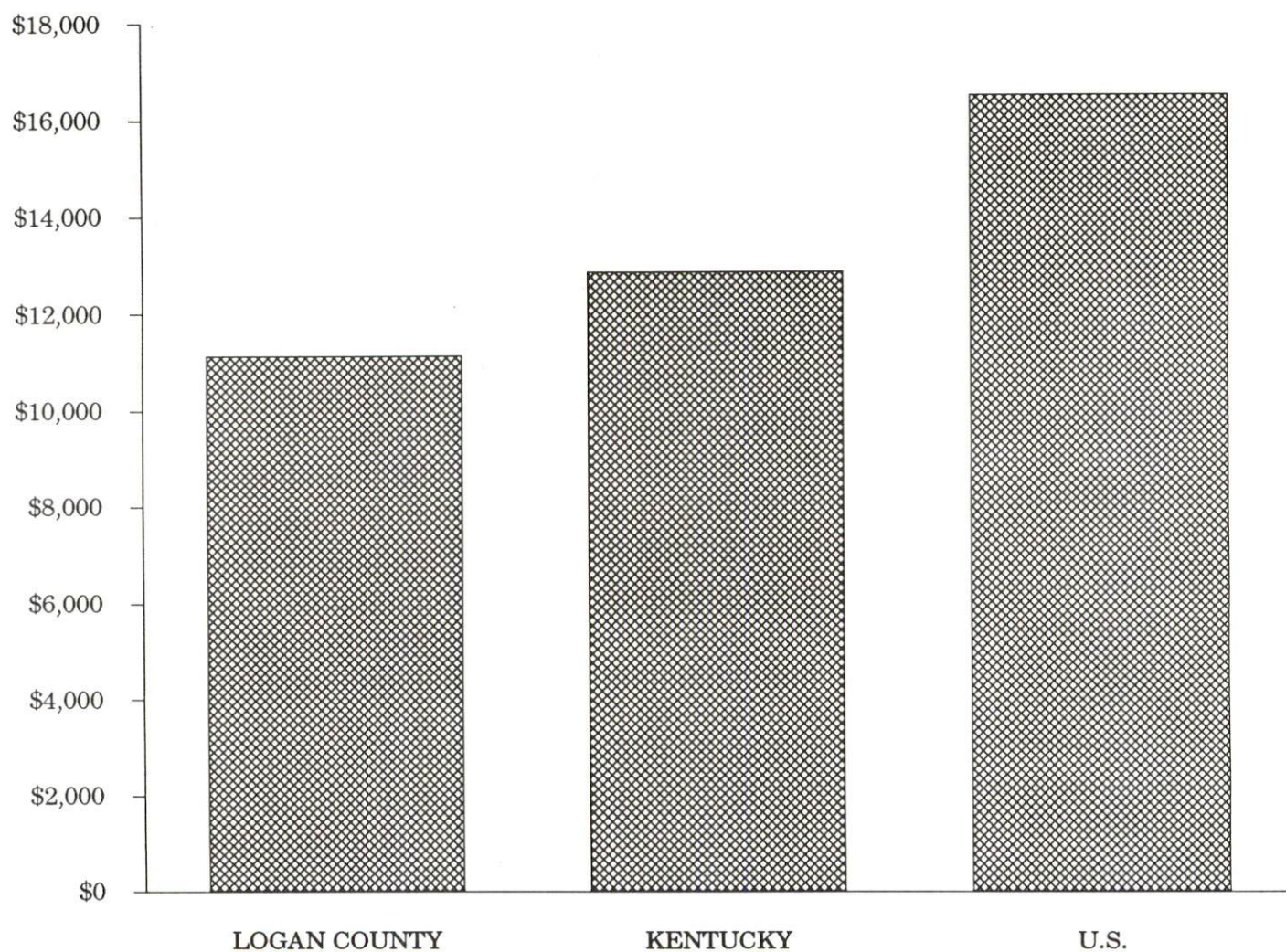


# PER CAPITA PERSONAL INCOME

Area	1984	1988	Percent Change
Logan County	\$9,494	\$11,120	17.1
Labor Market Area Range	\$7,277 - \$10,159	\$9,746 - \$12,720	-
Kentucky	\$10,411	\$12,830	23.2
U.S.	\$13,116	\$16,490	25.7

Sources: U.S. Bureau of Economic Analysis, Kentucky Economic Information System, April 1990.

## PER CAPITA PERSONAL INCOME 1988



## AVERAGE PLACEMENT WAGES

Logan County is served by the Bowling Green local office of the Kentucky Department for Employment Services. The focus of the following data is on job placements made by the Bowling Green local office and may therefore be used as an indicator of the wages which employers in the area pay new employees. During the twelve months which ended on June 30, 1990, the local employment office filled 4,792 job openings in various occupational categories. The average hourly wage for selected occupational categories were:

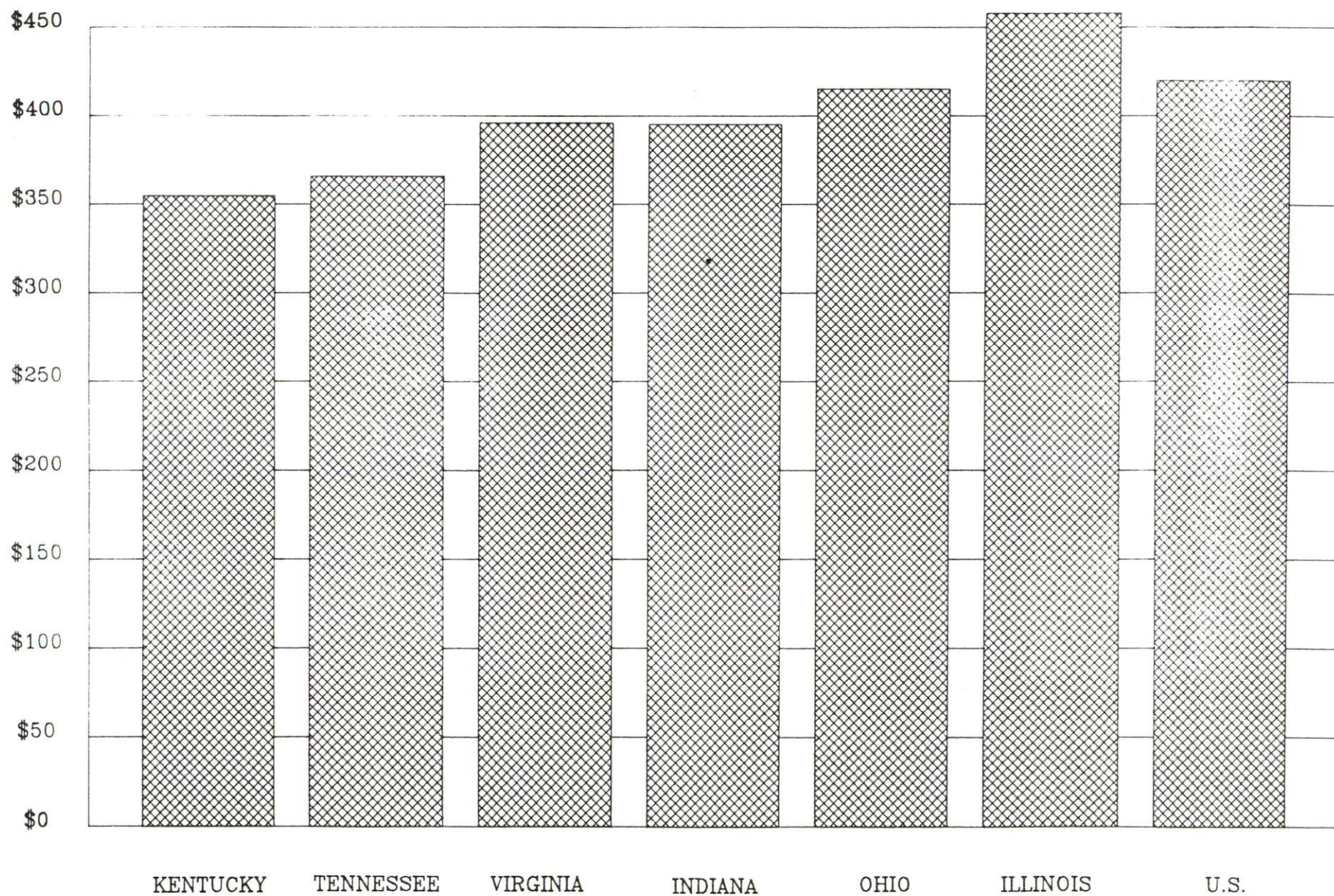
<u>OCCUPATIONAL CATEGORY</u>	<u>NUMBER OF PLACEMENTS</u>	<u>AVERAGE WAGE(\$)</u>
All Occupations	4,792	5.11
Clerical	971	6.20
Sales	98	4.20
Services (excluding domestic)	790	3.65
Agricultural, Fishery, Forestry, etc.	62	4.25
Processing	87	4.98
Machine Trades	424	6.13
Bench Work	911	4.49
Structural	268	5.44
Motor Freight/ Transportation	186	7.54
Packaging and Materials Handling	888	5.30
Other	24	4.77

The Bowling Green local office also serves Allen, Butler, Edmonson, Simpson, and Warren Counties. The above occupational categories are taken from the Dictionary of Occupational Titles published by the U.S. Department of Labor.

Source: Kentucky Cabinet for Human Resources, Department for Employment Services.



AVERAGE WEEKLY WAGES OF WORKERS COVERED BY  
UNEMPLOYMENT INSURANCE - 1988





AVERAGE WEEKLY WAGES BY INDUSTRY  
BY PLACE OF WORK, 1988

	Logan County	Kentucky (State- Wide)	Tennessee	Virginia
All Industries	\$320.51	\$352.31	\$363.12	\$392.56
Mining & Quarrying	*	603.27	495.85	596.88
Contract Construction	223.31	380.71	394.27	422.27
Manufacturing	375.56	464.92	416.73	452.60
Transportation, Communications & Public Utilities	375.20	468.17	485.13	554.17
Wholesale & Retail Trade	182.82	238.88	N/A	N/A
Finance, Insurance & Real Estate	297.81	401.17	269.27	466.23
Services	272.78	298.98	343.48	391.67
State/Local Government	329.24	377.81	403.21	457.00
	<u>Indiana</u>	<u>Ohio</u>	<u>Illinois</u>	<u>U. S.</u>
All Industries	\$392.63	\$411.08	\$454.10	\$416.33
Mining & Quarrying	635.77	579.73	674.62	660.40
Contract Construction	449.87	465.46	584.10	469.85
Manufacturing	532.06	569.98	555.83	517.62
Transportation, Communications & Public Utilities	502.69	519.17	584.83	542.33
Wholesale & Retail Trade	N/A	N/A	N/A	N/A
Finance, Insurance & Real Estate	406.58	444.33	579.88	532.52
Services	317.98	348.48	402.38	384.31
State/Local Government	395.31	428.10	453.12	442.71

\* Not disclosed.

N/A Not Available.

Note: The average weekly wage for each category includes the salaries and wages of all persons working for that type business. For example, the manufacturing category includes both production workers and administrative personnel. Excludes domestic workers, railway workers, certain nonprofit corporations, majority of federal government workers, and self-employed workers.

Source: Kentucky Cabinet for Human Resources, Average Weekly Wages of Workers Covered by Kentucky Unemployment Insurance Law, 1988. U.S. Department of Labor, Bureau of Labor Statistics, Average Annual Pay by State and Industry, August 29, 1989.

# EXISTING INDUSTRY

## LOGAN COUNTY MANUFACTURING FIRMS, THEIR PRODUCTS AND EMPLOYMENT

<u>Firm</u> <u>(Establishment date)</u>	<u>Product</u>	<u>1989</u> <u>Average Employment</u>
<b>Adairville</b>		
Adairville Feed Mill (1958)	Feed, grain	7
Auburn Hosiery Mills, Inc. (1946)	Boys & men's socks, children's panty hose and tights, ladies' hose, panty hose and tights	217
Odom Sausage Company of Kentucky, Inc. (1964)	Sausage	139
<b>Auburn</b>		
Auburn Hosiery Mills, Inc. (1937)	Men and boy's sport socks, children's panty hose and tights, ladies' hosiery, panty hose, and tights	247
Auburn Leather Company, Inc. (1863)	Western tack	34
Caldwell Gasket, Inc. (1985)	Non-metallic gaskets high-temperature electrical insulation, molded thermo-plastics	75
Colonial House Furniture (1960)	Reproduction furniture	14
Country Barn (1983)	Shaker furniture reproduction, Wood accent items	5
Scotts Auburn Mills, Inc. (1876)	Yellow corn meal, mill feed, soft wheat flour, white corn mill	25
<b>Lewisburg</b>		
Acres of Art (1985)	Screen printing apparel, signs	1
Hinton Lumber, Inc. (1933)	Rough lumber, ties, flitches	35
Lewisburg Roller Mills (1944)	Fertilizer, feed	3
Nelson Company of Kentucky (1976)	Wood pallets, skids, crates	45
Red Kap Industries (1972)	Men's work clothes	171
<b>Russellville</b>		
BTR Precision Diecasting, Inc.(1956)	Gas pressure regulators, Alum die casting	336

(Continued)

<u>Firm</u> <u>(Establishment date)</u>	<u>Product</u>	<u>1989</u> <u>Average Employment</u>
Bilt Rite Products Company (1958)	Poultry cages, welded mesh	59
E.R. Carpenter Company (1969)	Polyethlene film, bonded fiber fabrics, urethane foam cushion	653
Emerson Electric Company (1961)	Hermetic electric motors	800
Griffin Industries of Kentucky (1972)	Tallow by-products, tankage	42
Illinois Tool Works, Inc. (1967)	Metal fasteners	35
The Kentucky Stone Company (1936)	Agricultural lime, crushed limestone	13
Logan Aluminum, Inc. (1983)	Flint aluminum sheet, aluminum can stock	750
Logan Leader (1968)	Newspapers	34
Maxwell Tool & Machine, Inc. (1982)	Machine shop, tools and dies	15
McCarley & Richardson, Inc. (1949)	Feed	8
National Lumber (1986)	Hardwood lumber, pallet flitches	10
Printers Plus, Inc. (1984)	Commercial printing	5
Red Kap Industries (1944)	Men and women's sportswear, rental uniforms	440
Russellville Concrete Products (1945)	Ready mixed concrete, precast concrete	16
Russellville Dental Lab (1956)	Dental appliances	9
Southern States Cooperative, Inc. (1959)	Fertilizer	12
<b>South Union</b>		
Merchants Grain, Inc. (1985)	Grain	5

Sources: Kentucky Cabinet for Economic Development, Division of Research and Planning. Logan County Chamber of Commerce.

#### LABOR ORGANIZATIONS IN MANUFACTURING FIRMS

<u>Union</u>	<u>Representing workers at:</u>
United Food and Commercial Workers International Union, AFL-CIO	Odom Sausage Company of Kentucky
United Steelworks of America, AFL-CIO-CLC	The Kentucky Stone Company



# SELECTED INDUSTRIAL SERVICES

<u>Types of Services</u>	<u>Location</u>	<u>Mileage from Russellville</u>
Custom Data Processing	Bowling Green, Kentucky	29
Custom Plastics Producers	Bowling Green, Kentucky	29
Electric Motor Repair	Auburn, Kentucky	12
	Bowling Green, Kentucky	29
Grinding, Precision & Tool	Hopkinsville, Kentucky	36
	Glasgow, Kentucky	62
Heat Treating Facilities	Nashville, Tennessee	51
Industrial Equipment & Supplies	Bowling Green, Kentucky	29
Industrial Gases	Bowling Green, Kentucky	29
Industrial Waste Removal	Russellville, Kentucky	-
Machine Shops, Tool & Die	Russellville, Kentucky	-
Metal Castings	Elkton, Kentucky	16
Metal Finishers	Nashville, Tennessee	51
Metal Service Centers	Russellville, Kentucky	-
Millwrights	Franklin, Kentucky	22
	Bowling Green, Kentucky	29
Public Warehouse Facilities	Bowling Green, Kentucky	29

Sources: Kentucky Cabinet for Economic Development, Kentucky Directory of Selected Industrial Services, 1987; Division of Research and Planning.

## TRANSPORTATION

### Highways

U.S. Highways 68, 79, and 431, and Kentucky Highways 79 and 100 are all "AAA"-rated (80,000-pound gross load limit) trucking highways serving Logan County. U.S. Highway 68 provides access to the Green River Parkway, 25 miles east of Russellville, and to the Pennyryle Parkway, 35 miles to the west. The Western Kentucky Parkway is located 37 miles north of Russellville via U.S. Highway 431.

Interchanges with Interstate 65 are located 25 miles southeast of Russellville via Kentucky 100, and 30 miles northeast of Russellville via U.S. Highway 68 and the Green River Parkway. Interstate 24 is accessible 27 miles southwest of Russellville via U.S. Highway 79.

The reconstruction of U.S. 68/KY 80 between Auburn and Bowling Green and the construction of a bypass around Auburn and Russellville is scheduled to begin in 1991. U.S. 431 North will also be reconstructed from Russellville to the Logan Aluminum Plant.

#### HIGHWAY MILES FROM RUSSELLVILLE, KENTUCKY, TO SELECTED MARKET CENTERS

City	Highway Miles	City	Highway Miles
Atlanta, GA	331	Los Angeles, CA	2,084
Baltimore, MD	719	Louisville, KY	148
Birmingham, AL	242	Nashville, TN	51
Chicago, IL	424	New Orleans, LA	575
Cincinnati, OH	248	New York, NY	898
Cleveland, OH	495	Pittsburgh, PA	526
Detroit, MI	506	St. Louis, MO	304
Knoxville, TN	233		

Note: Mileage computations are via the best interstate or primary highways, not necessarily the most direct route of travel.

Sources: Rand McNally Deluxe Motor Carriers' Road Atlas, 1989. Official Kentucky Mileage Map, 1980.

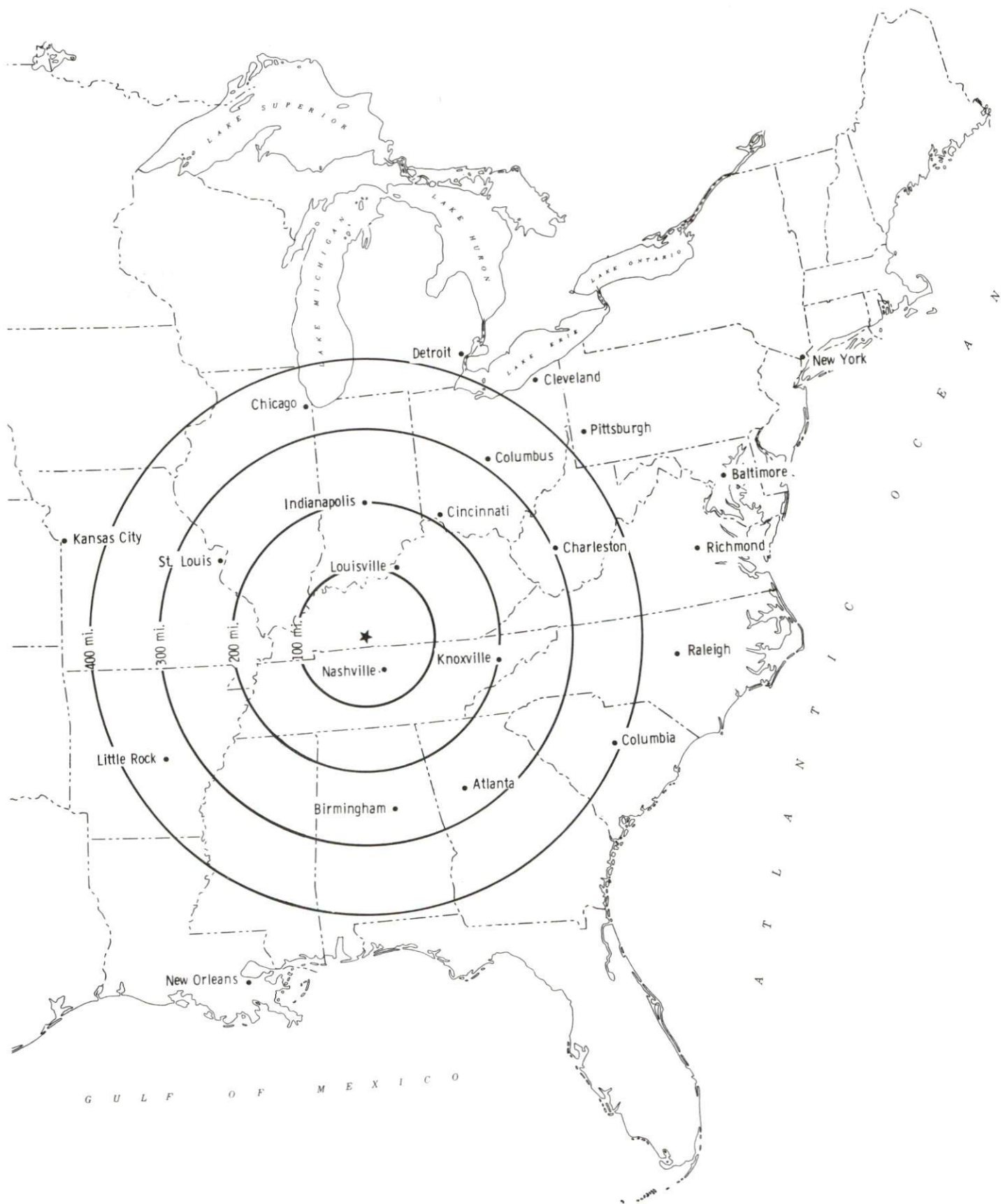
### Truck Service

Twenty-six firms provide interstate and/or intrastate trucking service to Russellville. Adairville is served by 15 companies; Auburn is served by 20 companies; and 19 trucking companies serve Lewisburg.

Source: American Motor Carrier Directory, Fall 1990.



## Selected Market Centers



## Rail

The R. J. Corman Railroad Corporation provides branch line rail service to Russellville and Auburn. The R. J. Corman Railroad Corporation line connects with CSX Transportation's main line at Bowling Green, Kentucky, 29 miles northeast. CSX Transportation provides the nearest piggyback facilities at Nashville, Tennessee, 51 miles south of Russellville.

The R. J. Corman Railroad recently constructed a 40,000 square-foot warehouse and distribution facility on the Warren and Logan County line. The \$2 million facility has 40,000 square-feet of warehouse space and 51 acres of fenced in outdoor storage. The facility is adjacent to U.S. 68/KY 80 and is served by the R. J. Corman Railroad which connects with the CSX Railroad, ten miles east of the facility near Bowling Green.

For details on routing, schedules, rates, and services contact:

R.J. Corman Railroad Corporation  
P.O. Box 788  
Nicholasville, Kentucky 40356  
(606) 885-9457

## Air

### Local

Location:	Russellville-Logan County Airport
Runways:	5 miles southeast of Russellville
Length:	1 paved
Traffic	4,000 feet
Control:	Wind sock, unicom 122.7
Lighting:	Pilot controlled lighting, sundown to sunrise, VASI, REIL, rotating beacon, 100LL octane fuel, flight instruction, tie-down, restrooms, hangars, maintenance by appointment, aircraft rental

The Russellville-Logan County Airport is currently constructing eight additional hangars. The expenditure for the project will be \$140,000.

### Nearest Scheduled Commercial Airline Service

Location:	Nashville Metropolitan Airport
	6 miles southeast of Nashville, Tennessee;
	57 miles south of Russellville
Air Service:	American, Delta, Northwest, TWA, Southwest, United, USAir, Nashville Eagle, ComAir, USAir Express
Daily Arrivals & Departures:	440

## UTILITIES

### Electricity

Company serving **Russellville** - Russellville Electric Plant Board  
Source of power - Tennessee Valley Authority  
For industrial rates contact:

Russellville Electric Plant Board  
165 East Fourth Street  
P.O. Box 418  
Russellville, Kentucky 42276-0418  
(502) 726-2466

Company serving **Adairville, Lewisburg and a major portion of Logan County** - Pennyryle Rural Electric Cooperative Corporation  
Source of power - Tennessee Valley Authority  
For industrial rates contact:

South Kentucky Industrial Development  
Association, Inc.  
P.O. Box 726  
Hopkinsville, Kentucky 42240  
(502) 885-5392

and/or

Pennyryle Rural Electric Cooperative  
Corporation  
P.O. Box 551  
Hopkinsville, Kentucky 42240  
(502) 886-2555

Company serving **Auburn and northeastern Logan County** - Warren Rural  
Electric Cooperative Corporation  
Source of power - Tennessee Valley Authority  
For industrial rates contact:

South Kentucky Industrial Development  
Association, Inc.  
P.O. Box 726  
Hopkinsville, Kentucky 42240  
(502) 885-5392

and/or

Warren Rural Electric Cooperative  
Corporation  
P.O. Box 1118  
Bowling Green, Kentucky 42102  
(502) 842-6541

## Natural Gas

Company serving **Russellville, Adairville, and Auburn** - Western  
Kentucky Gas Company  
Source of supply - Texas Gas Transmission Corporation  
For rates and supplies contact:

Marketing Department  
Western Kentucky Gas Company  
311 West Seventh Street  
Owensboro, Kentucky 42302  
(502) 685-8067

Natural gas service is not available in the corporate limits of Lewisburg. However, natural gas is available 2.5 miles south of the city.

## Public Water Supply

Company serving **Russellville**- City of Russellville Water Department  
106 South West Park Square  
Russellville, Kentucky 42276  
(502) 726-5006 or 726-5026

Source -	Lake Herndon
Treatment plant capacity -	3,200,000 gallons per day
Average daily consumption -	1,700,000 gallons
Peak daily consumption -	2,000,000 gallons
Storage capacity -	3,100,000 gallons
Water pressure -	78 psi to 110 psi

The City of Russellville is currently installing a 14-inch main from Spa Lake to the city. The \$2.5 million project will provide a second source of raw water to Russellville. The project is expected to be completed by February 1991.

Company serving **Adairville** - Adairville Water Works  
P.O. Box 185  
Adairville, Kentucky 42202  
(502) 539-8661

Source -	South Fork of Red River
Treatment plant capacity -	750,000 gallons per day
Average daily consumption -	400,000 gallons
Peak daily consumption -	650,000 gallons
Storage capacity -	310,000 gallons including clear well
Water pressure -	60 psi to 90 psi

The City of Adairville has been awarded a grant to expand the water treatment plant to a 1.25 million gallon-per-day capacity facility. The project is expected to be underway by early 1991.



Company serving Auburn - Auburn Water Department  
P.O. Box 465  
Auburn, Kentucky 42206  
(502) 542-4475

Source - Blue Hole Spring  
Treatment plant capacity - 200,000 gallons per day  
Average daily consumption - 190,000 gallons  
Peak daily consumption - Capacity  
Storage capacity - 90,000 gallons  
Water pressure - 30 psi to 55 psi

The City of Auburn is currently constructing a new 400,000 gallon-per-day water treatment plant. In addition, a 500,000 gallon elevated storage tank is being constructed. Both projects, which represent an approximate investment of \$1,003,338, will be completed in early 1991.

Company serving Lewisburg - Lewisburg Water Works  
P.O. Box 239  
Lewisburg, Kentucky 42256  
(502) 755-2311

Source - Spa Lake  
Treatment plant capacity - 576,000 gallons per day  
Average daily consumption - 90,000 gallons  
Peak daily consumption - 175,000 gallons  
Storage capacity - 210,000 gallons  
Water pressure - 35 psi to 150 psi

The Lewisburg Water Works recently completed the construction of a new \$900,000 treatment plant. The new facility increased treatment capacity from 192,000 gallons per day to 576,000 gallons per day.

Name of water district - North Logan Water District  
5311 Lewisburg Road  
Russellville, Kentucky 42276  
(502) 726-7988

Area served - portions of Northern Logan County -  
Source of supply of treated water - Russellville Municipal Water Works  
Average daily consumption - 90,000 gallons  
Peak daily consumption - 120,000 gallons  
Storage capacity - 100,000 gallons  
Water pressure - 40 psi to 80 psi

Name of water district - South Logan Water Association  
City Hall  
P.O. Box 185  
Adairville, Kentucky 42202  
(502) 539-6731 or 726-6510

Area served - Most of southern Logan County  
Source of supply of treated water - City of Adairville Water Works  
Average daily consumption - 350,000 gallons  
Peak daily consumption - 550,000 gallons  
Storage capacity - 200,000 gallons  
Water pressure - 70 psi to 100 psi

The South Logan Water Association has installed approximately 17 miles of water lines in 1990. Additional line extensions and a 100,000 gallon elevated storage tank are planned for the near future.

#### Sewerage

Company serving Russellville - Russellville Wastewater Treatment Plant  
Francis Avenue  
Russellville, Kentucky 42276  
(502) 726-5037

Design capacity - 1,600,000 gallons per day  
Average daily flow - 600,000 gallons  
Type of treatment - Secondary  
Treated effluent discharged into - Town Branch

Company serving Adairville - Adairville Wastewater Treatment Plant  
P.O. Box 185  
Adairville, Kentucky 42202  
(502) 539-6731

Design capacity - 260,000 gallons per day  
Average daily flow - 115,000 gallons  
Type of treatment - Secondary  
Treated effluent discharged into - South Fork of Red River

The Adairville Wastewater Treatment Plant will extend service north of the city in 1991. A study is currently underway to determine the feasibility of extending service to the southern portion of the Adairville city limits.

Company serving Auburn - Auburn Sewer Department  
P.O. Box 465  
Auburn, Kentucky 42206  
(502) 542-4149

Design capacity - 350,000 gallons per day  
Average daily flow - 246,000 gallons  
Type of treatment - Primary and secondary  
Treated effluent discharged into - Black Lick Creek

The City of Auburn constructed a new waste water treatment plant in 1990. The \$845,117 facility increased sewage treatment capacity from 154,000 gallons per day to 350,000 gallons per day.

Company serving Lewisburg- Lewisburg Sewer Department  
P.O. Box 239  
Lewisburg, Kentucky 42256  
(502) 755-4805

Design capacity - 125,000 gallons per day  
Average daily flow - 75,000 gallons  
Type of treatment - Primary and secondary  
Treated effluent discharged into - Alum Lick Creek

The Lewisburg Sewer Department will construct an HCR storage lagoon in 1991. An effluent line to mud river will also be constructed. The project, which will cost approximately \$658,000 is expected to be completed by late 1991.

## CLIMATE

### Logan County

#### Temperature

Normal (29-year record)	59.20 degrees
Average annual 1989	58.80 degrees
Record highest, July 1952 (50-year record)	107.00 degrees
Record lowest, January 1985 (50-year record)	-17.00 degrees
Normal heating degree days (29-year record)	3,756
(Heating degree day totals are the sums of negative departures of average daily temperatures from 65 degrees F.)	

#### Precipitation

Normal (29-year record)	48.49 inches
Mean annual snowfall (48-year record)	10.90 inches
Total precipitation 1989	57.03 inches
Mean number days precipitation (.01 inch or more) (48-year record)	118.80
Mean number days thunderstorms (48-year record)	53.50

#### Prevailing winds (through 1963)

South

#### Relative Humidity (24-year record)

Midnight	79 percent
6 a.m.	84 percent
Noon	57 percent
6 p.m.	61 percent

Source: U.S. Department of Commerce, Environmental Science Services Administration, Climatological Data, 1989. Station of record: Nashville, Tennessee.



## LOCAL GOVERNMENT

### Structure

The cities of Russellville, Adairville, Auburn and Lewisburg are each served by a mayor and six council members. The mayor is elected to a four-year term while the council members each serve two-year terms. Logan County is served by a county judge/executive and eight magistrates. Each county official serves a four-year term.

### Planning and Zoning

Joint agency - Joint Cities - Logan County Planning Commission

Participating cities - Russellville, Auburn, Adairville

Zoning enforced - within the corporate limits of Russellville, Auburn, and Adairville and three miles beyond each city

Subdivision regulations enforced - within the corporate limits of Russellville, Adairville, and Auburn and three miles beyond each city

Local codes enforced - Building code in Russellville

Mandatory state codes enforced - Kentucky Plumbing Code, National Electric Code, Kentucky Boiler Regulations and Standards, Kentucky Building Code (modeled after BOCA code)

### Local Fees and Licenses

The cities of Auburn and Russellville each levy an occupational license fee of one and one-half percent of all salaries, wages, commissions, and other compensation earned by every person in these cities for work performed or services rendered, and one and one-half percent of the net profits of all businesses, professions, or other activities conducted in these cities. The cities of Adairville and Lewisburg each levy an occupational license fee of one percent and one percent on net profits of all businesses.

Unloading licenses are \$25.50 per year in Adairville and \$10 annually in Lewisburg. Business license fees of \$10 are also charged by Adairville, Auburn, Lewisburg, and Russellville.

## State and Local Property Taxes

All property in Kentucky, except items exempted by the state constitution, is taxed by the state. Property which also may be taxed by local jurisdictions includes land and buildings, finished goods inventories, automobiles, trucks, office furniture and office equipment. Local taxing jurisdictions in Kentucky include counties, cities, and school districts.

All property in Kentucky is assessed at 100 percent of fair cash value.

### COMBINED STATE AND LOCAL RATES PER \$100 VALUATION, 1989

	Russellville/ Russellville Independent School District	Russellville/ Logan County School District	City of Adairville
Land and Buildings	\$0.9441	\$0.6901	\$0.9301
Manufacturing			
Machinery	0.1500	0.1500	0.1500
Pollution Control			
Equipment	0.1500	0.1500	0.1500
Inventories			
Raw Materials	0.0010	0.0010	0.0010
Goods in Process	0.0010	0.0010	0.0010
Finished Goods	0.7611	0.5071	0.7281
Automobiles & Trucks	1.2070	0.9550	1.1760
Other Tangible			
Personal Property	1.2101	0.9561	1.1771
Intangibles (Accounts receivable*, money in hand, stock, notes, bonds)	0.2500	0.2500	0.2500
Goods Stored in Public Warehouses in Transit Status	0.0010	0.0010	0.0010
Private Leaseholds in Industrial Revenue Bond Financed Facilities	0.015	0.015	0.015

COMBINED STATE AND LOCAL RATES PER \$100 VALUATION, 1989

	City of Auburn	City of Lewisburg	Unincorporated Logan County
Land and Buildings	\$0.7621	\$0.7301	\$0.5201
Manufacturing			
Machinery	0.1500	0.1500	0.1500
Pollution Control			
Equipment	0.1500	0.1500	0.1500
Inventories			
Raw Materials	0.0010	0.0010	0.0010
Goods in Process	0.0010	0.0010	0.0010
Finished Goods	0.5601	0.5281	0.3181
Automobiles & Trucks	1.0080	0.9760	0.7660
Other Tangible			
Personal Property	1.0091	0.9771	0.7671
Intangibles (Accounts			
receivable*, money			
in hand, stock,			
notes, bonds)	0.2500	0.2500	0.2500
Goods Stored in Public			
Warehouses in Transit			
Status	0.0010	0.0010	0.0010
Private Leaseholds in			
Industrial Revenue			
Bond Financed			
Facilities	0.0150	0.0150	0.0150

\* Accounts receivable are taxed at 85 percent of face value, for an effective rate of \$0.2125 per \$100 valuation.

## EDUCATION

### Public Schools

	Russellville Independent	Logan County
Total Enrollment (Fall, 1990)	1,522	3,013
Accreditation	Southern Association of Colleges and Schools	
Pupil-Teacher Ratio (1989-90)	17.0-1	17.6-1
Percent High School Graduates to College (1989-90)	59.6	40.8
Expenditures Per Pupil (1989-90)	\$3,207.71	\$2,797.35

### Area Colleges and Universities

<u>Name</u>	<u>Location (Miles distant)</u>	<u>Enrollment (Fall, 1990)</u>
Western Kentucky University	Bowling Green, Kentucky (29)	15,240
Austin Peay State University	Clarksville, Tennessee (34)	6,347
Hopkinsville Community College	Hopkinsville, Kentucky (36)	1,828
Belmont College	Nashville, Tennessee (51)	2,812
David Lipscomb College	Nashville, Tennessee (51)	2,466
Fisk University	Nashville, Tennessee (51)	891
Free Will Baptist Bible College	Nashville, Tennessee (51)	252
Meharry Medical College	Nashville, Tennessee (51)	623
Nashville State Technical Institute	Nashville, Tennessee (51)	5,974
Trevecca Nazarene College	Nashville, Tennessee (51)	1,795
Tennessee State University	Nashville, Tennessee (51)	7,393
Vanderbilt University	Nashville, Tennessee (51)	9,236



## Vocational Training

Vocational training is available at both the state vocational-technical schools and the area vocational education centers. The state vocational-technical schools are post-secondary institutions. The area vocational education centers are designed to supplement the curriculum of high school students. Both the state vocational-technical schools and the area vocational education centers offer evening courses to enable working adults to upgrade current job skills.

Arrangements can be made to provide training in the specific production skills required by an industrial plant. Instruction may be conducted either in the vocational school or in the industrial plant, depending upon the desired arrangement and the availability of special equipment.

### Bluegrass State Skills Corporation

The Bluegrass State Skills Corporation, an independent public corporation created and funded by the Kentucky General Assembly, provides programs of skills training to meet the needs of business and industry from entry level to advanced training, and from upgrading present employees to retraining experienced workers.

The Bluegrass State Skills Corporation is the primary source for skills training assistance for a new or existing company. The Corporation works in partnership with other employment and job training resources and programs, as well as Kentucky's economic development activities, to package a program customized to meet the specific needs of a company.

<u>Vocational School</u>	<u>Location (Miles from Russellville)</u>	<u>Cumulative Enrollment 1989-1990</u>
Russellville Area Vocational Education Center	Russellville	311
Bowling Green State Vocational- Technical School	Bowling Green (29)	965
Advanced Technology Center	Bowling Green (29)	157

## OTHER LOCAL FACILITIES

### Local Medical Personnel

Physicians - 31  
Dentists - 8

### Hospitals

<u>General Hospital</u>	<u>Location</u>	<u>Beds</u>
Logan Memorial Hospital	Russellville	100

Medical staff - 15 active physicians, 40 consulting and courtesy physicians; 46 registered nurses; 20 licensed practical nurses

### Other Medical Facilities and Services

Auburn Nursing Center  
Barren River Comprehensive Care  
Center (Russellville)  
Home Health Care (four agencies)  
Logan County Health Department  
(Russellville)  
Russellville Health Care Manor, Inc.  
Russellville-Logan County Ambulance  
Service, Inc.  
Adairville Volunteer Fire Department and  
Ambulance Service  
Auburn Rural Fire Department and  
Ambulance Service

### Banks and Savings and Loan Associations

The Citizens National Bank (Russellville)  
Southern Deposit Bank (Russellville)  
Adairville Banking Company  
Auburn Banking Company  
Lewisburg Banking Company

### Newspapers

The Logan Leader and The News Democrat

### Telephone Service

South Central Bell Company  
(serves Russellville)  
Logan County Rural Telephone Cooperative, Inc.  
(serves Adairville, Auburn, and Lewisburg)

## RECREATION

### Local

Recreational facilities in Russellville include the 110-acre Russellville-Logan County Memorial Park with two ball fields, four tennis courts, basketball courts, a nature trail, and facilities for shuffleboard and croquet. The park also provides a miniature golf course, a trapshooting range, playground equipment, picnic areas, four shelters, two concession stands, restrooms and clubhouse with a kitchen. Hampton Park, also located in Russellville, features basketball courts, a picnic shelter, playground equipment and a multipurpose baseball and softball field. A recreation room is also available in the old armory building. Planned recreation programs include Little League, Farm League and Senior League baseball; Adult and Peewee League basketball; and tennis tournaments.

The 10-acre Adairville Community Park features two lighted ball fields, concession stands, a basketball court, picnic areas with a pavilion, and parking areas. A lake and clubhouse are also available at the Red River Fish and Game Club's facilities near Adairville.

Coke-McCutchen Park in Auburn contains two ball fields, two tennis courts, basketball and volleyball courts, facilities for shuffleboard and horseshoe pitching, campgrounds, two open-air pavilions and a concession stand.

The lighted 10-acre Lewisburg Municipal Park has a ball field, basketball courts, three tennis courts, a playground, a picnic area, a covered shelter, a concession stand and restrooms.

Other recreational facilities in Logan County include the Russellville Country Club which features a clubhouse and dining room, a swimming pool, a nine-hole golf course, and two tennis courts. Also available are a public nine-hole golf course and clubhouse, one indoor cinema, a drive-in movie theatre and public swimming pool.

South Union Kentucky, located in eastern Logan County, is the site of the last Shaker Community in Kentucky. The community features the Shaker Museum, the Shaker Tavern, and the Shaker Antique Mall and Gifts.

Lake Malone State Park, located in southern Muhlenberg County, 20 miles northwest of Russellville, offers camping facilities, swimming, fishing, and boating on an 826-acre lake. Playground facilities and picnic shelters are located in a beautiful scenic cliff area. Located across from the entrance to the park is an inn featuring luxury rooms, a restaurant, a swimming lake, a beach, boating, fishing, tennis, and nature trails.

### Area (Within 75 miles)

Jefferson Davis Monument  
Pennyrile Forest State Park  
Barren River Lake State Park  
Lake Barkley Resort Park  
Rough River Dam State Resort Park  
Mammoth Cave National Park  
Nolin River Lake  
The Land Between The Lakes



## COMMUNITY IMPROVEMENTS

### Recent

Russellville re-certified as a "Kentucky Certified City" in 1990, and is distinguished as a silver award winner recognizing three consecutive years of certification. Re-certification is based on achievement in the following areas: existing industry assistance, small business assistance, educational resources, and community development factors of health care, public safety, art and culture, recreation, governmental awareness and resources. The Certified Cities Program is sponsored by the Kentucky Chamber of Commerce.

The Auburn Hosiery Mills' Adairville Plant recently underwent an expansion which included the construction of a new 29,400 square-foot building and the addition of 100 new jobs.

The R. J. Corman Railroad Corporation recently constructed a warehouse and distribution facility on the Warren and Logan County line. The 40,000 square-foot facility is served by the R. J. Corman Railroad which connects with the CSX Railroad ten miles east near Bowling Green. The \$2 million facility also has 51 acres of out-door, fenced-in storage.

The City of Russellville upgraded the filtering system at its water treatment plant which increased the plant's treatment capacity to 3,200,000 gallons per day. A 14-inch line is currently being installed from Spa Lake to the city of Russellville in order to provide a second source of raw water. A recent line extension to the western portion of Logan County added 134 new customers. The total cost of the line extension project is approximately \$707,000. The city plans to construct a 200,000 gallon elevated storage tank in the near future.

Adairville recently re-zoned all areas of the city, increasing the areas zoned industrial and multi-family residential. Adairville is also in the process of annexing areas north, west, and east of the present city limits. The city's Economic Development Committee is currently formulating plans to develop an industrial park.

A Land and Water Conservation Fund Grant was recently obtained by the city of Adairville to implement improvements at the Adairville Community Park. Improvements were made to the playground, lighting, ball fields, and dugouts. In addition, a tennis court was constructed, water hydrants were installed, a new scoreboard and control building were constructed as was a walktrack in the west section of the park.

A new elementary school was constructed in Auburn in 1989 and an elementary/middle school is currently being completed in Adairville.



## Under Way

JS Technos will open in Russellville in October 1991. The manufacturer produces automotive brake parts, master cylinders, wheel cylinders, and brake boosters. Employment is expected to reach 50 in its first year of production. JS Technos has constructed a 47,000 square-foot plant and invested \$9,000,000 in the project.

An air filtration systems manufacturer will open in Russellville in early 1991. Its All About Clean Air will produce commercial air filtration systems for the health care industry and will employ 35. Its All About Clean Air invested \$1,000,000 in the renovation of an existing 40,000 square-foot spec building.

Logan Aluminum is undergoing a \$250,000,000 expansion. In addition to increasing the size of their facility, Logan Aluminum will add approximately 150 new jobs in five years.

The Russellville-Logan County Airport is currently constructing eight new hangars at a cost of \$140,000.

The City of Auburn is in the process of completing the construction of a new 400,000 gallon-per-day water treatment plant and a 500,000 gallon water storage tank. The combined expenditure for the projects, which are scheduled to be completed by spring 1991, is approximately \$1,023,000. A new sewage treatment plant, which increased the city's sewage treatment capacity to 350,000 gallons per day, was completed in 1990.

## Planned

The Kentucky Transportation Cabinet has announced plans to construct a four-lane highway to replace the existing US 68/KY 80. The new road will serve as a corridor between I-65 and I-24. In addition a bypass around Auburn and Russellville will be constructed. U.S. Highway 431 will be rebuilt from U.S. 68 to the Logan Aluminum Plant, north of Russellville.

The City of Adairville will implement an expansion project to increase the water treatment plant's capacity from 775,000 gallons per day to 1,250,000 gallons per day in early 1991. A sewer service extension project has also been planned.

The City of Lewisburg plans to install effluent lines to Mud River. This project, which is scheduled to begin in early 1991, also includes a new storage lagoon, pump, and force main. The total cost of the project will be \$658,000.

Lewisburg has applied for a \$21,000 Land and Water Conservation Grant to implement improvements to the Lewisburg Municipal Park.