

1991

Industrial Resources: Marion County - Lebanon

Kentucky Library Research Collection

Follow this and additional works at: https://digitalcommons.wku.edu/marion_cty

 Part of the [Business Administration, Management, and Operations Commons](#), [Growth and Development Commons](#), and the [Infrastructure Commons](#)

Recommended Citation

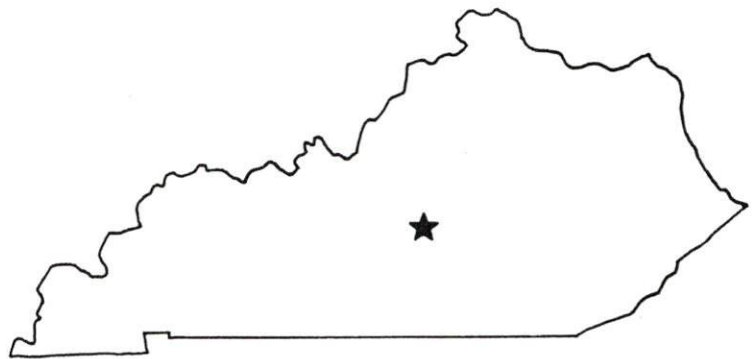
Kentucky Library Research Collection, "Industrial Resources: Marion County - Lebanon" (1991). *Marion County*. Paper 5.
https://digitalcommons.wku.edu/marion_cty/5

This Report is brought to you for free and open access by TopSCHOLAR®. It has been accepted for inclusion in Marion County by an authorized administrator of TopSCHOLAR®. For more information, please contact topscholar@wku.edu.

R 697 Marion Co.

Resources for Economic Development

Lebanon



KENTUCKY
Open for Business

RESOURCES FOR ECONOMIC DEVELOPMENT

LEBANON, KENTUCKY

Prepared by
The Kentucky Cabinet for Economic Development
Division of Research and Planning
in cooperation with
The Lebanon-Marion County Chamber of Commerce

1991

Division Director - Pamela K. Riley; program manager - Keith Roberts; research - Richard H. Cobb; clerical - Wanda Sharp; graphics - Robert Owens, Pat Coleman; cartography - Edwin Scott, Dave Clark. Cost of printing paid from state funds.

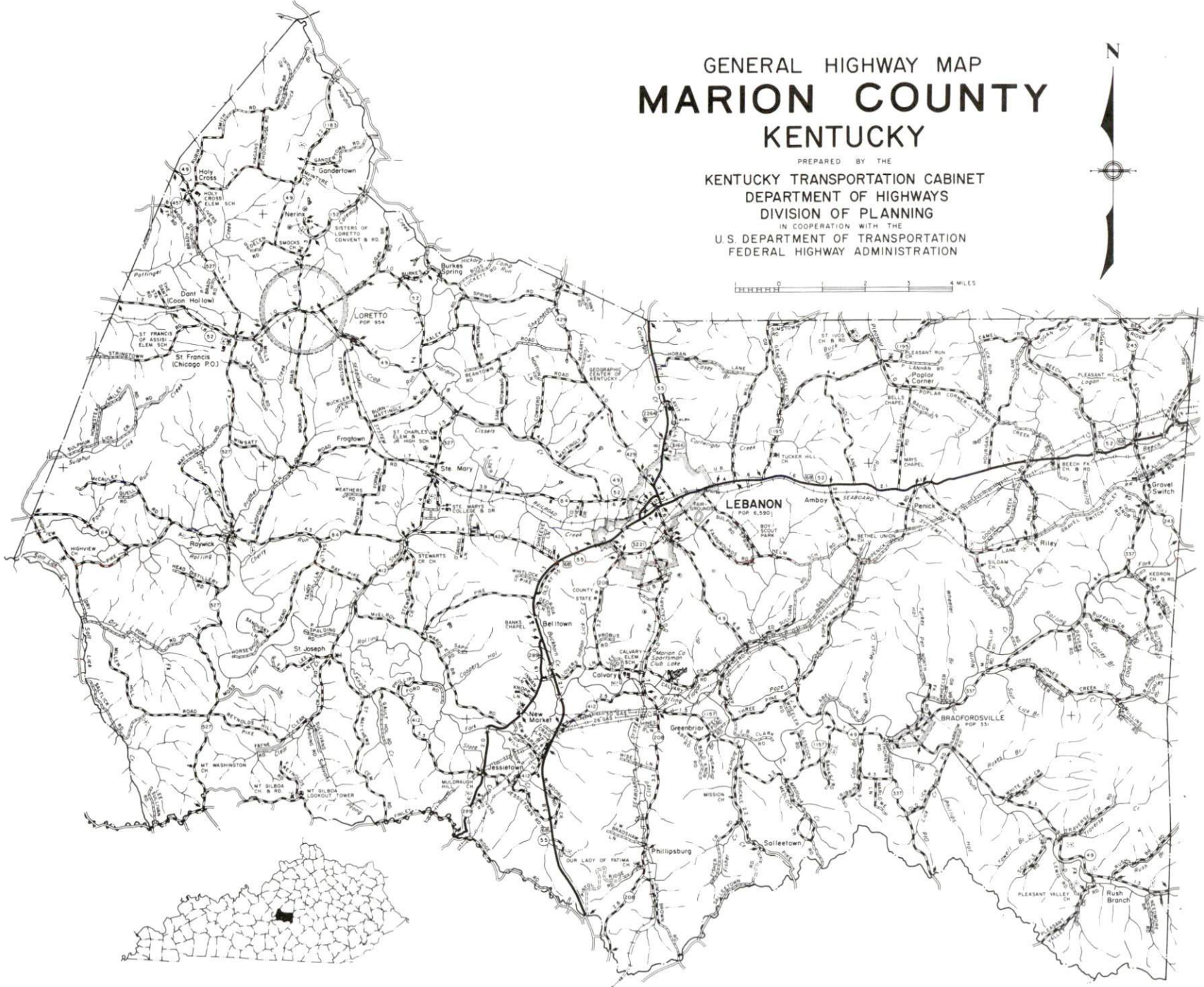
TABLE OF CONTENTS

<u>Chapter</u>	<u>Page</u>
LEBANON, KENTUCKY - A RESOURCE PROFILE	1
THE LABOR MARKET STATISTICS	2
Labor Market Area Map	2
Population	3
Population Projections	3
Estimated Labor Supply	3
Labor Force Characteristics of Residents, 1990	4
Selected Components of Nonagricultural Employment, by Place of Work, 1989	5
Per Capita Personal Income	6
Average Placement Wages	7
Average Weekly Wages of Workers Covered by Unemployment Insurance 1989 - Bar Chart	8
Average Weekly Wages by Industry, by Place of Work, 1989	9
EXISTING INDUSTRY	10
Marion County Manufacturing Firms, Their Products and Employment	10
Recent Industrial Developments	11
Labor Organizations in Manufacturing Firms	11
Selected Industrial Services	12
TRANSPORTATION	13
Highways	13
Truck Service	13
Selected Market Location Map	14
Rail	15
Air	15
UTILITIES	16
Electricity	16
Natural Gas	16
Public Water Supply	17
Sewerage	17
CLIMATE	18

<u>Chapter</u>	<u>Page</u>
LOCAL GOVERNMENT	19
Structure	19
Planning and Zoning	19
Local Fees and Licenses.....	19
State and Local Property Taxes	20
EDUCATION	21
Public Schools	21
Nonpublic Schools	21
Area Colleges and Universities.....	21
Vocational Training.....	22
OTHER LOCAL FACILITIES	23
Local Medical Personnel	23
Hospitals.....	23
Other Medical Facilities and Services	23
Banks and Savings & Loan Associations.....	23
Newspapers	23
Telephone Service	23
RECREATION	24
COMMUNITY IMPROVEMENTS	25

GENERAL HIGHWAY MAP MARION COUNTY KENTUCKY

PREPARED BY THE
KENTUCKY TRANSPORTATION CABINET
DEPARTMENT OF HIGHWAYS
DIVISION OF PLANNING
IN COOPERATION WITH THE
U.S. DEPARTMENT OF TRANSPORTATION
FEDERAL HIGHWAY ADMINISTRATION



LEBANON, KENTUCKY - A RESOURCE PROFILE

Lebanon, the county seat of Marion County, is located three miles southeast of the geographical center of the state of Kentucky. Lebanon, with a 1990 population of 5,695, is located 62 miles southwest of Lexington, Kentucky; 66 miles southeast of Louisville, Kentucky; 140 miles southwest of Cincinnati, Ohio; 164 miles northeast of Nashville, Tennessee; and 198 miles northwest of Knoxville, Tennessee.

Marion County, located in both the Outer Blue Grass and Mississippian Plateaus Regions, has a land area of 347 square miles. In 1990 Marion County had a population of 16,499.

The Economic Framework - The total number of Marion County residents employed in 1990 averaged 7,729. In 1989, manufacturing firms in the county reported 972 employees; wholesale and retail trade provided 833 jobs; 643 people were employed in service occupations; state and local government accounted for 581 employees; and contract construction firms provided 225 jobs.

Labor Supply - There is a current estimated labor supply of 15,249 persons available for industrial jobs in the labor market area. In addition, from 1990 through 1994, 9,665 young persons in the area will become 18 years of age and potentially available for industrial jobs.

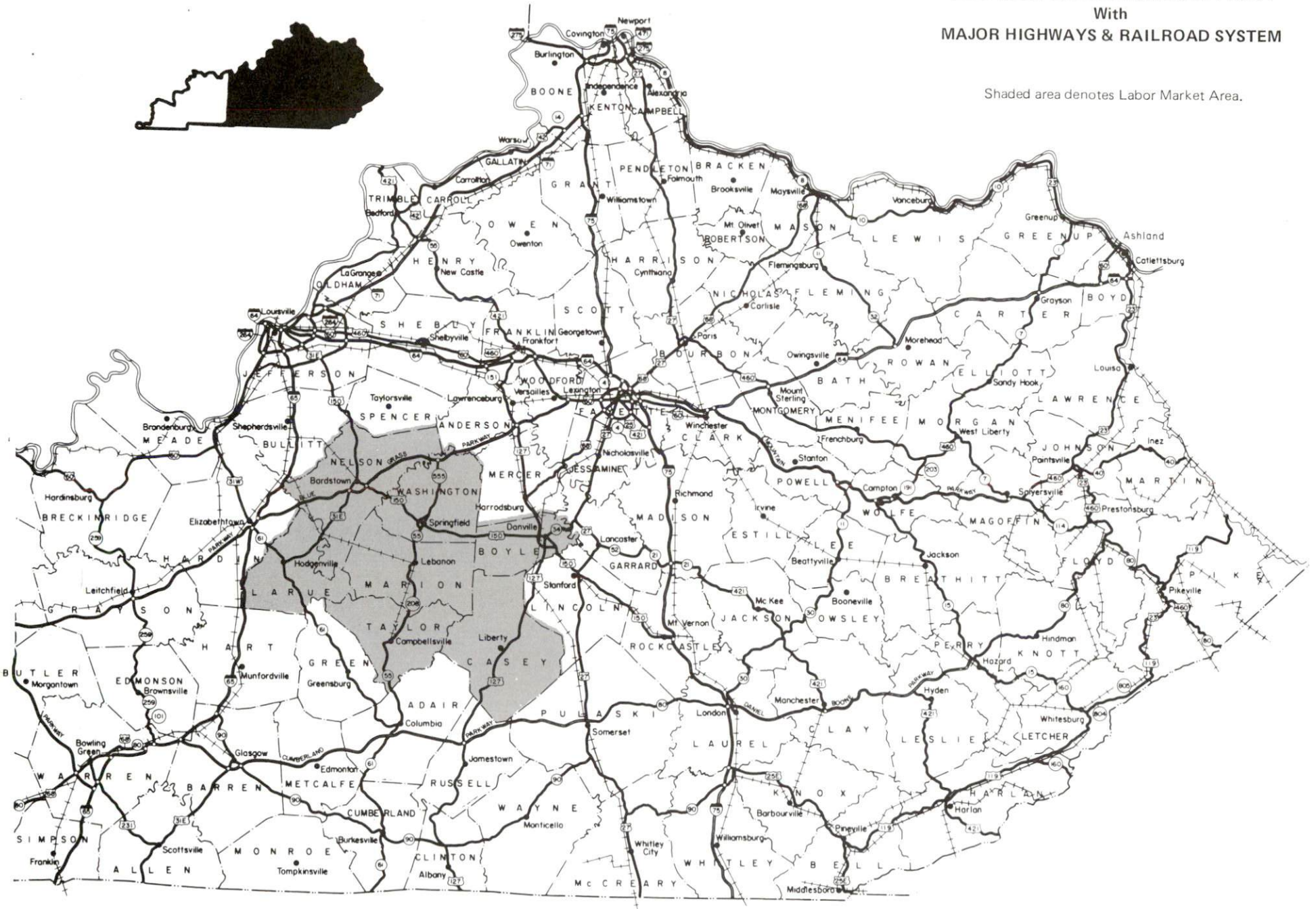
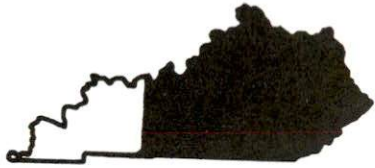
Transportation - Lebanon is served directly by U.S. 68 and Kentucky 55, both "AAA"-rated (80,000-pound gross limit) trucking highways. The Blue Grass Parkway is located 23 miles north via Kentucky 55 and Kentucky 555. Eleven trucking companies provide interstate and/or intrastate trucking service to Lebanon. R.J. Corman Railroad provides the nearest branch line rail service at Bardstown, Kentucky, 25 miles northwest of Lebanon. The Lebanon-Springfield Airport, four miles north, maintains one paved 4,000-foot runway. The nearest scheduled commercial airline service is provided by Blue Grass Airport near Lexington, Kentucky, 58 miles northeast of Lebanon, and Standiford Field near Louisville, Kentucky, 62 miles northwest of Lebanon.

Power and Fuel - Electric power is provided to Lebanon and parts of Marion County by the Kentucky Utilities Company. Most of Marion County is provided electric power by Inter-County Rural Electric Cooperative Corporation. Natural gas is provided to Lebanon by the Western Kentucky Gas Company.

Education - Primary and secondary education is provided to Lebanon and Marion County by the Marion County School System. Two nonpublic schools serve Marion County. Six universities, eight senior colleges, and four community colleges are located within 70 miles of Lebanon. Vocational training is provided by the Marion County Area Vocational Education Center in Lebanon and the Elizabethtown State Vocational-Technical School in Elizabethtown, 51 miles northwest.

LEBANON LABOR MARKET AREA With MAJOR HIGHWAYS & RAILROAD SYSTEM

Shaded area denotes Labor Market Area.



LABOR MARKET STATISTICS

The Lebanon Labor Market Area includes Marion County and the adjoining Kentucky counties of Boyle, Casey, Larue, Nelson, Taylor, and Washington.

POPULATION

	<u>1990</u>	<u>1980</u>	<u>1970</u>
Labor Market Area	129,327	129,242	113,520
Lebanon	5,695	6,590	5,528
Marion County	16,499	17,910	16,714

Source: U.S. Department of Commerce, Bureau of the Census, January 1991.

POPULATION PROJECTIONS

	<u>2000</u>	<u>2010</u>	<u>2020</u>	<u>2030</u>
Labor Market Area	137,780	140,140	140,300	137,690
Marion County	18,110	18,610	18,790	18,550

Source: University of Louisville, Urban Studies Center, State Data Center.

ESTIMATED LABOR SUPPLY

	<u>Current</u>				<u>Future</u>
	<u>Total</u>	<u>Unemployed</u>	<u>Employed Part-Time</u>	<u>Not in Labor Force</u>	<u>Becoming 18 years of age 1990 thru 1994</u>
Labor Market Area*	15,249	4,374	5,823	5,052	9,665
Marion County	1,567	678	660	229	1,390

* Additional workers may be drawn from other nearby counties.

Note: Unemployed - persons unemployed and actively seeking work; Employed Part-Time - persons employed but working only 14 to 26 weeks per year; Not in Labor Force - represents the number of persons who would enter the labor force if suitable employment were available (based on the assumption that persons in Kentucky would like to participate in the labor force in the same proportion that they do nationally).

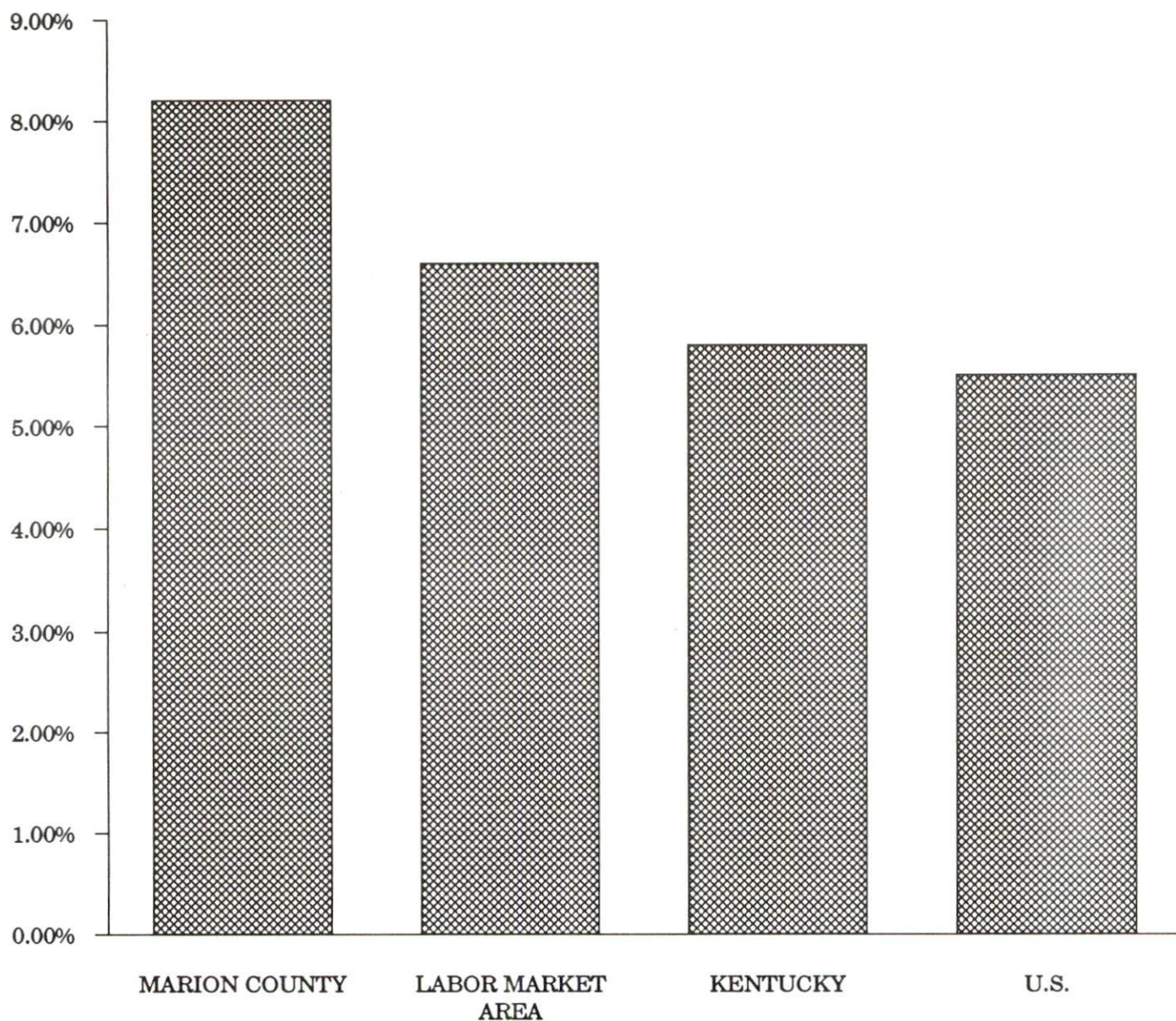
Sources: Kentucky Cabinet for Human Resources, Kentucky Labor Supply Estimates by County, 1989. Kentucky Cabinet for Economic Development, Future Labor Supply Becoming 18 Years of Age, 1990 thru 1994.

LABOR FORCE CHARACTERISTICS OF RESIDENTS, 1990

	<u>Marion County</u>	<u>Labor Market Area</u>
Civilian Labor Force	8,421	64,481
Employment	7,729	60,203
Unemployment	692	4,278
Rate of Unemployment (%)	8.2	6.6

Source: Kentucky Cabinet for Human Resources, Kentucky Labor Force Estimates, Annual Averages, 1990.

**UNEMPLOYMENT RATES
1990**

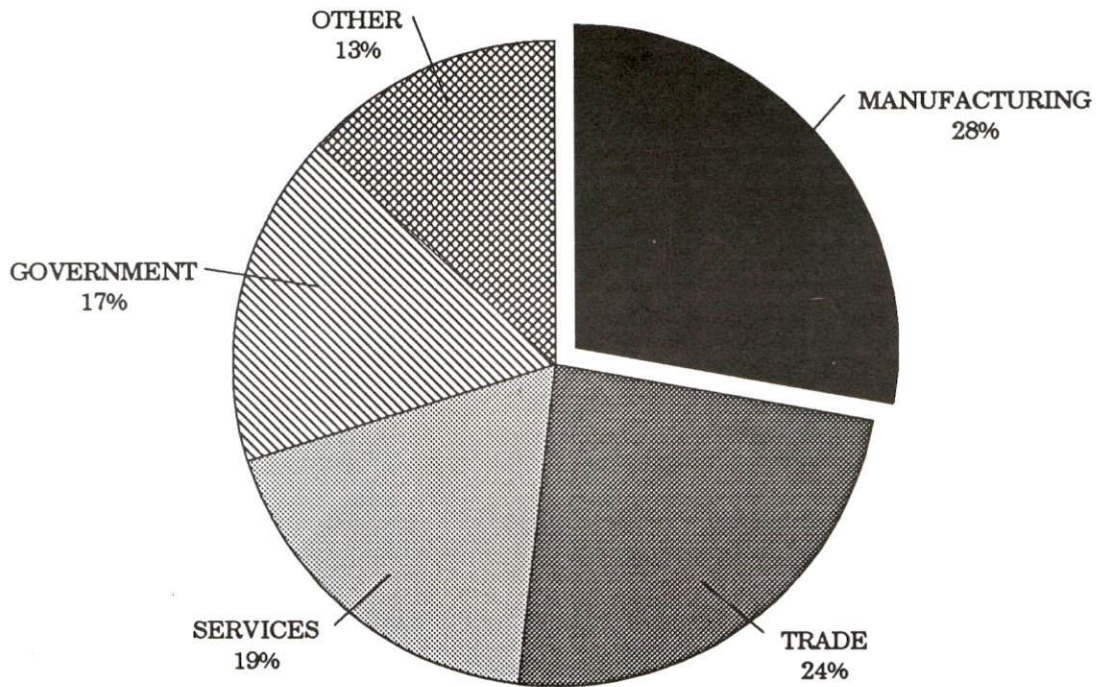


**SELECTED COMPONENTS OF NONAGRICULTURAL EMPLOYMENT
BY PLACE OF WORK, 1989**

	<u>Marion County</u>	<u>Labor Market Area</u>
All Industries (total)	3,472	39,825
Manufacturing	972	14,569
Wholesale & Retail Trade	833	9,495
Services	643	5,620
State/Local Government	581	5,429
Contract Construction	225	1,659

Note: Excludes domestic workers, railway workers, certain nonprofit corporations, majority of federal government workers, and self-employed workers.
Source: Kentucky Cabinet for Human Resources, Average Monthly Workers Covered by Kentucky Unemployment Insurance Law, 1989.

MARION COUNTY

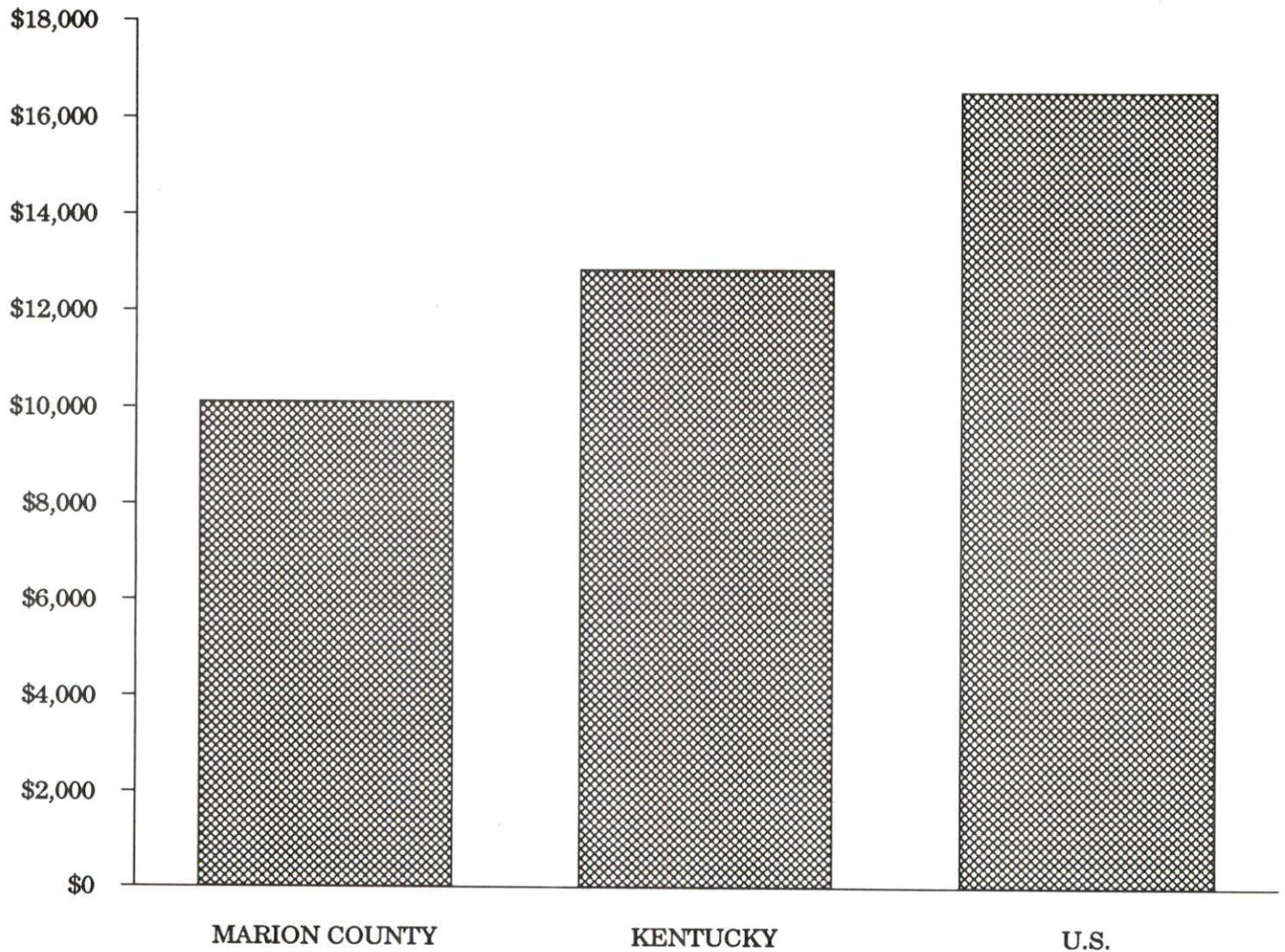


PER CAPITA PERSONAL INCOME

Area	1984	1988	Percent Change
Marion County	\$8,312	\$10,108	21.6
Labor Market Area Range	\$6,666 - \$10,242	\$8,491 - \$12,427	-
Kentucky	\$10,411	\$12,830	23.2
U.S.	\$13,116	\$16,490	25.7

Source: U.S. Bureau of Economic Analysis, Kentucky Economic Information System, April 1990.

PER CAPITA PERSONAL INCOME
1988



AVERAGE PLACEMENT WAGES

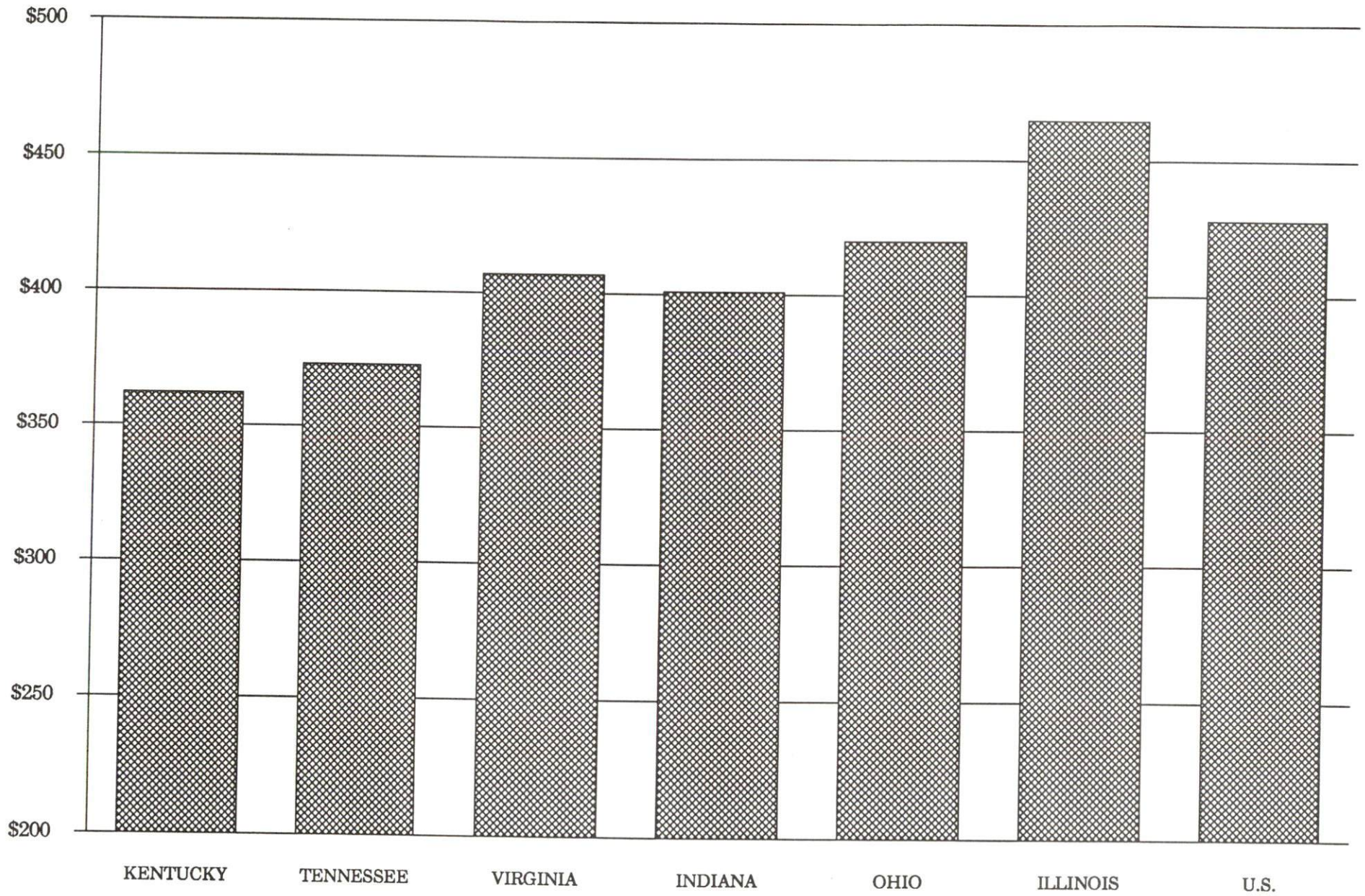
Marion County is served by the Bardstown local office of the Kentucky Department for Employment Services. The focus of the following data is on job placements made by the Bardstown local office and may therefore be used as an indicator of the wages which employers in the area pay new employees. During the twelve months which ended on June 30, 1990, the local employment office filled 1,585 job openings in various occupational categories. The average hourly wage for selected occupational categories were:

<u>OCCUPATIONAL CATEGORY</u>	<u>NUMBER OF PLACEMENTS</u>	<u>AVERAGE WAGE(\$)</u>
All Occupations	1,585	4.81
Clerical	256	3.85
Sales	37	4.67
Services (excluding domestic)	178	3.45
Agricultural, Fishery, Forestry, etc.	93	3.42
Processing	307	5.82
Machine Trades	169	5.73
Bench Work	179	5.14
Structural	98	6.53
Motor Freight/ Transportation	25	4.32
Packaging and Materials Handling	178	4.05
Other	27	5.01

The Bardstown local office also serves Nelson and Washington Counties. The above occupational categories are taken from the Dictionary of Occupational Titles published by the U.S. Department of Labor.

Source: Kentucky Cabinet for Human Resources, Department for Employment Services.

AVERAGE WEEKLY WAGES OF WORKERS COVERED BY
UNEMPLOYMENT INSURANCE - 1989



AVERAGE WEEKLY WAGES BY INDUSTRY
BY PLACE OF WORK, 1989*

	Marion County	Kentucky (State- Wide)	Tennessee	Virginia
All Industries	\$271.76	\$362.03	\$373.00	\$407.00
Mining & Quarrying	N/A	623.82	522.00	576.00
Contract Construction	260.36	388.21	407.00	434.00
Manufacturing	302.78	472.92	431.00	470.00
Transportation, Communications & Public Utilities	300.11	482.22	493.00	575.00
Wholesale & Retail Trade	160.71	245.12	N/A	N/A
Finance, Insurance & Real Estate	312.13	417.89	448.00	488.00
Services	321.44	310.29	357.00	409.00
State/Local Government	319.67	370.61	N/A	N/A
	Indiana	Ohio	Illinois	U. S.
All Industries	\$401.00	\$420.00	\$465.00	\$428.00
Mining & Quarrying	693.00	596.00	707.00	688.00
Contract Construction	464.00	480.00	608.00	485.00
Manufacturing	546.00	580.00	566.00	534.00
Transportation, Communications & Public Utilities	504.00	533.00	582.00	556.00
Wholesale & Retail Trade	N/A	N/A	N/A	N/A
Finance, Insurance & Real Estate	418.00	456.00	594.00	544.00
Services	328.00	360.00	419.00	399.00
State/Local Government	N/A	N/A	N/A	N/A

* Wages for U.S. and surrounding states rounded to nearest dollar.

N/A Not Available.

Note: The average weekly wage for each category includes the salaries and wages of all persons working for that type business. For example, the manufacturing category includes both production workers and administrative personnel. Excludes domestic workers, railway workers, certain nonprofit corporations, majority of federal government workers, and self-employed workers.

Source: Kentucky Cabinet for Human Resources, Average Weekly Wages of Workers Covered by Kentucky Unemployment Insurance Law, 1989. U.S. Department of Labor, Bureau of Labor Statistics, Employment and Wages, Annual Averages, 1989, October 1990.

EXISTING INDUSTRY

MARION COUNTY MANUFACTURING FIRMS,
THEIR PRODUCTS AND EMPLOYMENT

<u>Firm</u> <u>(Establishment date)</u>	<u>Product</u>	<u>1990</u> <u>Average Employment</u>
Lebanon		
American Wood Products (1990)	Pet bedding supplies	20
Angell Manufacturing Company (1965)	Name plates, plaques, aluminum & plastic trim	120
Bluegrass Knitting Mills (1989)	T-shirts	60
Cargill, Inc. (1964)	Fertilizer mixing; chemicals, herbicides	4
Central Kentucky Drying Company, Inc. (1977)	Kiln dried lumber, millwork	6
Central Kentucky Tool and Engineering Company (1970)	Precision machine parts, stampings, tools, dies, fabrication, jigs fixtures, machine shop, precision machining	22
Curtis Maruyasu American, Inc. (1988)	Steel tubing for the auto industry	30
Deeps Farm Supply (1953)	Animal feed	5
Independent Stave Company, Inc. (1983)	Whiskey barrels	180
Jane & Linda Sportswear Company (1958)	Ladies' sportswear	316
Kemp Lumber Company (1950)	Rough lumber, dimension stock, cedar posts	11
Ken Mar Tool, Inc. (1976)	Sheet metal fabrication, service industry machines, machine shop	50
Kentucky Furniture and Woodworking, Inc. (1983)	Furniture dimension stock	65
The Lebanon Enterprise, Inc. (1966)	Newspaper, printing	10
Lebanon Machine Shop (1955)	Machine shop	3
Lebanon Oak Flooring Company (1897)	Flooring, furniture dimension, millwork products	77
Lebanon Power and Apparatus Company, Inc. (1963)	Rebuilt motors, industrial electronic repair, industrial electronic design	19
Plastic Products Company, Inc. (1986)	Plastic injection molding	90

(Continued)

<u>Firm</u> <u>(Establishment date)</u>	<u>Product</u>	<u>1990</u> <u>Average Employment</u>
Russell Springs Gate Company (1984)	Metal farm gates, cattle feeders	14
T & H Feed Service, Inc. (1956)	Feed	8
Teledyne Portland Forge (1991)	Steel forgings	175
Loretto		
Makers Mark Distillery, Inc. (1953)	Whiskey, Feed	42

Sources: Kentucky Cabinet for Economic Development, Division of Research and Planning, Lebanon-Marion County Chamber of Commerce.

RECENT INDUSTRIAL DEVELOPMENTS

American Wood Fibers Company constructed a 20,000-square-foot facility in the industrial park during 1990. With an initial investment of \$1 million, the company manufactures cedar chips for sale to the pet industry for bedding and employ 20 persons.

Bluegrass Knitting Mills constructed a 10,000-square-foot facility during 1989, with an initial investment of \$1 million. The company, located in the industrial park area of Lebanon, employs 60 persons in the manufacturing of T-shirts.

Teledyne Portland Forge Company has completed construction of a 110,000-square-foot facility. This plant is the world's most modern, fully integrated screw press forging plant. The company employs approximately 175 persons.

LABOR ORGANIZATIONS IN MANUFACTURING FIRMS

<u>Union</u>	<u>Representing workers at:</u>
International Union of Electronic, Electrical, Technical, Salaried, and Machine Workers, AFL-CIO	Angell Manufacturing Company
Coopers International Union of North America, AFL-CIO	Independent Stave Company, Inc.
International Ladies' Garment Workers, AFL-CIO	Jane & Linda Sportswear Company
International Woodworkers of America, UF	Lebanon Oak Flooring Company

SELECTED INDUSTRIAL SERVICES

<u>Types of Services</u>	<u>Location</u>	<u>Mileage from Lebanon</u>
Custom Data Processing	Danville	31
Custom Plastics Producers	Lebanon	-
Electric Motor Repair	Lebanon	-
Grinding, Precision & Tool	Clearmont	43
Heat Treating Facilities	Frankfort	58
Industrial Equipment & Supplies	Springfield	8
Industrial Gases	Campbellsville	20
Industrial Waste Removal	Elizabethtown	51
Machine Shops, Tool & Die	Lebanon	-
Metal Castings	Louisville	66
Metal Finishers	Elizabethtown	51
Metal Service Centers	Lexington	62
Millwrights	Wilmore	48
Public Warehouse Facilities	Danville	31

Sources: Kentucky Cabinet for Economic Development, Division of Research and Planning.

TRANSPORTATION

Highways

Lebanon is served by U.S. Highway 68 and Kentucky Highway 55, both "AAA"-rated (80,000-pound gross load limit) trucking highways. The Blue Grass Parkway, which provides easy access to Interstates 64, 65, and 75, is located 23 miles north via Kentucky 55 and 555. Interstate 65 is located 48 miles northwest of Lebanon, while Interstate 64 and 75 are located 65 miles northeast of Lebanon. The Cumberland Parkway is accessible 40 miles south via Kentucky 55.

HIGHWAY MILES FROM LEBANON, KENTUCKY, TO SELECTED MARKET CENTERS

City	Highway Miles	City	Highway Miles
Atlanta, GA	405	Los Angeles, CA	2,168
Baltimore, MD	600	Louisville, KY	66
Birmingham, AL	351	Nashville, TN	164
Chicago, IL	353	New Orleans, LA	684
Cincinnati, OH	140	New York, NY	772
Cleveland, OH	385	Pittsburgh, PA	403
Detroit, MI	398	St. Louis, MO	324
Knoxville, TN	198		

Note: Mileage computations are via the best interstate or primary highways, not necessarily the most direct route of travel.

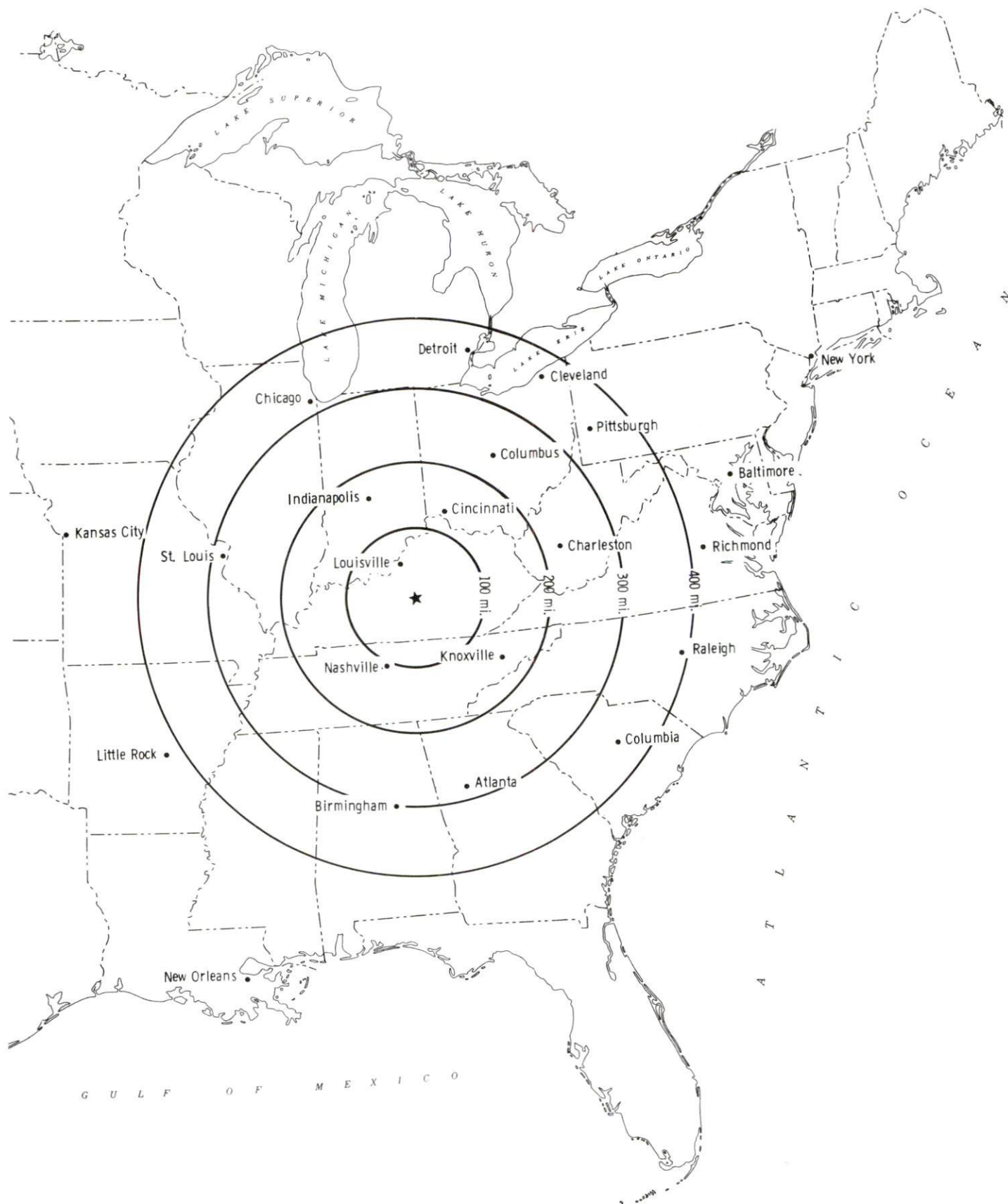
Sources: Rand McNally Deluxe Motor Carriers' Road Atlas, 1989. Official Kentucky Mileage Map, 1980.

Truck Service

Eleven common carrier trucking companies provide interstate and/or intrastate service to Lebanon.

Source: American Motor Carrier Directory, Spring 1991.

Selected Market Centers



Rail

R.J. Corman Railroad provides the nearest branch line rail service at Bardstown, Kentucky, 25 miles northwest of Lebanon. Norfolk Southern and Burlington Northern, located at Louisville, Kentucky, 66 miles northwest, provide the nearest piggyback facilities.

For details on routing, schedules, rates, and services contact:

Vice President-Operations
R.J. Corman Railroad Corporation
P.O. Box 279
Bardstown, Kentucky 40004
(502) 348-7444

Air

Local

Location:	Lebanon-Springfield Airport
Runways:	4 miles north of Lebanon
Length:	1 paved
Traffic	4,000 feet
Control:	Wind sock, VOR/DME, unicom
Lighting:	Rotating beacon, sunset to sunrise
Services:	80 and 100LL fuel, major and minor A & P repairs, flight instruction, tie-down, hangar, courtesy car

Nearest Scheduled Commercial Airline Service

Location:	Bluegrass Airport
	4 miles west of Lexington, Kentucky;
	58 miles northeast of Lebanon
Air Service:	Delta, USAir, TWA, United Express, American Eagle, ComAir, TW Express, USAir Express
Daily Arrivals & Departures:	74

Location:	Standiford Field
	4 miles southeast of center of Louisville, Kentucky;
	62 miles northwest of Lebanon
Air Service:	Air Toronto, Delta, Northwest, American, Continental, TWA, United, USAir, ComAir, JetStream, Simmons Eagle
Daily Arrivals & Departures:	164

UTILITIES

Electricity

Company serving Lebanon and parts of Marion - Kentucky Utilities Company

Source of power - Kentucky Utilities Company
For industrial rates contact:

Industrial Development Department
Kentucky Utilities Company
One Quality Street
Lexington, Kentucky 40507
(606) 255-1461

Company serving most of Marion County - Inter-County Rural Electric Cooperative Corporation

Source of power - East Kentucky Power Cooperative
For industrial rates contact:

Industrial Development Division
East Kentucky Power Cooperative
P. O. Box 707
Winchester, Kentucky 40391
(606) 744-4812

and/or

Inter-County Rural Electric Cooperative Corporation
Hustonville Road
P.O. Box 87
Danville, Kentucky 40422
(606) 236-4561

Natural Gas

Company serving Lebanon - Western Kentucky Gas Company

Source of supply - Tennessee Gas Pipeline Company
For rates and supplies contact:

Western Kentucky Gas Company
P.O. Box 866
Owensboro, Kentucky 42302
(502) 685-8067

Public Water Supply

Company serving City of Lebanon - Lebanon Water Works Company
120 South Proctor Knott
Lebanon, Kentucky 40033
(502) 692-2491

Source - Rolling Fork River
Treatment plant capacity - 3,000,000 gallons per day
Average daily consumption - 1,500,000 gallons
Peak daily consumption - 2,000,000 gallons
Storage capacity - 2,600,000 gallons
Water pressure - 40 psi to 190 psi

The Lebanon Water Works Company has tentative plans for several projects. Included is the construction of a dam and 940-million-gallon reservoir on Fagan Branch and a raw water pump station near the Rolling Fork River at the Calvary Dam with about 14,000 feet of 20-inch raw water transmission line. The improvements will provide a supplemental raw water source for customers. Total combined cost of the projects is approximately \$5.8 million and construction could begin by mid-Summer 1991.

Sewerage

Company serving City of Lebanon - Lebanon Sewer Department
118 South Proctor Knott
P.O. Box 840
Lebanon, Kentucky 40033
(502) 692-6272

Design capacity - 3,000,000 gallons per day
Average daily flow - 1,000,000 gallons
Type of treatment - Primary
Treated effluent discharged into - Hardins Creek

CLIMATE

Marion County

Temperature

Normal (29-year record)	54.90 degrees
Average annual 1989	54.20 degrees
Record highest, July 1988 (45-year record)	103.00 degrees
Record lowest, January 1963 (45-year record)	-21.00 degrees
Normal heating degree days (29-year record) (Heating degree day totals are the sums of negative departures of average daily temperatures from 65 degrees F.)	4,814

Precipitation

Normal (29-year record)	45.68 inches
Mean annual snowfall (45-year record)	16.10 inches
Total precipitation 1989	53.16 inches
Mean number days precipitation (.01 inch or more) (45-year record)	129.50
Mean number days thunderstorms (45-year record)	45.30

Prevailing winds (through 1963)

South

Relative Humidity (26-year record, except 1 a.m. - 25-year record)

1 a.m.	77 percent
7 a.m.	81 percent
1 p.m.	60 percent
7 p.m.	64 percent

Source: U.S. Department of Commerce, Environmental Science Services Administration, Climatological Data, 1989. Station of record: Lexington, Kentucky.

LOCAL GOVERNMENT

Structure

Lebanon is governed by a mayor and six council members. The mayor serves a four-year term and the six council members are elected for two-year terms. Marion County is governed by a county judge/executive and five magistrates. Each county official is elected to a four-year term.

Planning and Zoning

City agency - Lebanon Planning & Zoning Commission

Zoning enforced - Within city only

Subdivision regulations enforced - Within city and three miles beyond the corporate limits

Local codes enforced - Building and housing

Mandatory state codes enforced - Kentucky Plumbing Code, National Electric Code, Kentucky Boiler Regulations and Standards, Kentucky Building Code (modeled after BOCA code)

Local Fees and Licenses

The City of Lebanon levies an occupational license tax of one-half of one percent on salaries, wages, commissions and other compensations earned by individuals, and one-half of one percent on net profits of sales made within the city for businesses and professions, with a minimum fee of \$25.00.

Marion County levies an occupational license tax of one-half of one percent on salaries, wages, commissions and other compensations earned by individuals, and one-half of one percent on net profits of businesses and professions.

PROPERTY TAXES

The Kentucky Constitution requires the state to tax all classes of taxable property, and state statutes allow local jurisdictions to tax only a few classes. All locally taxed property is subject to county taxes and school district taxes (either a county school district or an independent school district). Property located inside of city limits may also be subject to city property taxes.

Special local taxing jurisdictions (fire protection districts, watershed districts, and sanitation districts) levy taxes within their operating areas (usually a small portion of community or county).

Property assessments in Kentucky are at 100% fair cash value. A 15% reduction is automatically granted for accounts receivable.

STATE PROPERTY TAX RATES PER \$100 VALUATION

<u>Selected Classes of Property</u>	<u>1990 State Rate</u>	<u>Local Taxation Permitted</u>
Real Estate	\$0.189	YES
Manufacturing Machinery	0.150	NO
Pollution Control Equipment	0.150	NO
Inventories		
Raw Materials	0.050	NO
Goods in Process	0.050	NO
Finished Goods	0.050	YES
Motor Vehicles	0.450	YES
Other Tangible Personal Property	0.450	YES
Intangibles (Accounts Receivable, Money on Hand)	0.250	NO

LOCAL PROPERTY TAX RATES PER \$100 VALUATION, 1990

<u>Taxing Jurisdiction</u>	<u>Real Estate</u>	<u>Finished Goods & Tangibles</u>	<u>Motor Vehicles</u>
Marion County	\$0.1780	\$0.1929	\$0.1929
School Districts			
Marion County	0.3010	0.3010	0.2330
Cities			
Lebanon	0.2500	0.2433	0.2433

EDUCATION

Public Schools

Marion County

Total Enrollment (Fall, 1990)	2,928
Pupil-Teacher Ratio (1989-90)	17.3-1
Percent High School Graduates to College (1989-90)	49.5
Expenditures Per Pupil (1989-90)	\$2,689.37

The Marion County School System is planning to construct a new middle school.

Nonpublic Schools

<u>School</u>	<u>Enrollment</u>	<u>Grades</u>
St. Augustine Elementary	420	K-8
St. Francis of Assisi Elementary (St. Francis)	57	K-7

Area Colleges and Universities

<u>Name</u>	<u>Location (Miles distant)</u>	<u>Enrollment (Fall, 1990)</u>
Saint Catharine College	Springfield (8)	257
Campbellsville College	Campbellsville (20)	857
Centre College	Danville (31)	879
Lindsey Wilson College	Columbia (39)	1,327
Ashbury College	Wilmore (48)	1,053
Elizabethtown Community College	Elizabethtown (51)	3,364
Kentucky State University	Frankfort (58)	2,512
Lexington Community College	Lexington (62)	4,588
Transylvania University	Lexington (62)	1,091
University of Kentucky	Lexington (62)	23,081
Midway College	Midway (63)	556
Berea College	Berea (65)	1,550
Bellarmino College	Louisville (66)	3,907
Jefferson Community College	Louisville (66)	10,240
Spalding University	Louisville (66)	1,028
University of Louisville	Louisville (66)	23,610
Eastern Kentucky University	Richmond (65)	15,371
Somerset Community College	Somerset (69)	2,087

Vocational Training

Vocational training is available at both the state vocational-technical schools and the area vocational education centers. The state vocational-technical schools are post-secondary institutions. The area vocational education centers are designed to supplement the curriculum of high school students. Both the state vocational-technical schools and the area vocational education centers offer evening courses to enable working adults to upgrade current job skills.

Arrangements can be made to provide training in the specific production skills required by an industrial plant. Instruction may be conducted either in the vocational school or in the industrial plant, depending upon the desired arrangement and the availability of special equipment.

Bluegrass State Skills Corporation

The Bluegrass State Skills Corporation, an independent public corporation created and funded by the Kentucky General Assembly, provides programs of skills training to meet the needs of business and industry from entry level to advanced training, and from upgrading present employees to retraining experienced workers.

The Bluegrass State Skills Corporation is the primary source for skills training assistance for a new or existing company. The Corporation works in partnership with other employment and job training resources and programs, as well as Kentucky's economic development activities, to package a program customized to meet the specific needs of a company.

<u>Vocational School</u>	<u>Location (Miles distant)</u>	<u>Cumulative Enrollment 1989-1990</u>
Marion County Area Vocational Education Center	Lebanon	296
Elizabethtown State Vocational- Technical School	Elizabethtown (51)	797

OTHER LOCAL FACILITIES

Local Medical Personnel

Physicians - 11

Dentists - 5

Hospitals

<u>General Hospital</u>	<u>Location</u>	<u>Beds</u>
Spring View Hospital	Lebanon	75

Medical staff - 49 physicians, 28 registered nurses, and 17 licensed practical nurses

Application for Certificate of Need for a total hospital replacement has been filed with the Human Resources Cabinet. If approved, construction will begin in late 1991.

Other Medical Facilities

Marion County Health Department (outpatient care)

Cedars of Lebanon Nursing Home - 94 beds

Spring View Nursing Home -38 beds

Marion County Ambulance Service

Banks and Savings & Loan Associations

Citizens National Bank

Farmers National Bank

Great Financial Federal

Kentucky National Bank of Marion County

Peoples Bank

Newspapers

The Lebanon Enterprise (weekly)

Telephone Service

General Telephone Company

RECREATION

Local

Public recreational facilities in or near Lebanon include eight tennis courts, one park, four playgrounds, one swimming pool, three baseball diamonds, two football fields, one skating rink, and a 3,400-foot jogging track.

The Lebanon Community Theater provides the community with several productions of the musical, drama, and comedy variety each year.

Sportsman's Lake, near the Lebanon city limits, is a public recreational area owned by the Commonwealth of Kentucky and operated by Marion County. The lake and surrounding area offers a clubhouse, a playground, and facilities for fishing, picnicking, and archery.

The Lebanon Country Club, a privately-owned facility, offers a nine-hole golf course, a swimming pool, and tennis courts.

Makers Mark Distillery, located between Lebanon and Loretto, is Kentucky's oldest operating mill and distillery on its original site. Tours are offered Monday through Friday. Facilities include a visitor/reception house which features artifacts of old time distilling and quarthouse, the equivalent of the modern package store. The Makers Mark Distillery has been listed on the National Register of Historic Places and has been named a Kentucky Landmark.

Lebanon is the home of the annual Marion County Ham Days, held the last weekend in September, and the Marion County Fair, held each year in July.

A fitness center is located at the Marion County High School and is fully equipped with the latest exercise equipment. The facility is open to the public during the evenings and used by the high school students daily.

Area (Within 50 miles)

Abraham Lincoln Birthplace National
Historic Site
Bernheim Forest Arboretum and
Nature Center
Constitution Square State Historic Site
Green River Lake State Park
Herrington Lake
Isaac Shelby Cemetery State Historic Site
Lincoln Homestead State Park
My Old Kentucky Home State Park
Old Fort Harrod State Park
Taylorsville Lake State Park
William Whitley House State Historic Site

COMMUNITY IMPROVEMENTS

Recent

Lebanon was chosen as a "Kentucky Certified City" for the sixth consecutive year in 1990. The award is based on achievement in the following categories: economic development, housing, education, and recreation. The Certified Cities Program is sponsored by the Kentucky Chamber of Commerce.

Teledyne Portland Forge Company has completed construction of a 110,000-square-foot facility. This plant is the world's most modern, fully integrated screw press forging plant. The company employs approximately 175 persons.

Bluegrass Knitting Mills constructed a 10,000-square-foot facility during 1989, with an initial investment of \$1 million. The company, located in the industrial park area of Lebanon, employs 60 persons in the manufacturing of T-shirts.

American Wood Fibers Company constructed a 20,000-square-foot facility in the industrial park during 1990. With an initial investment of \$1 million, the company manufactures cedar chips for sale to the pet industry for bedding and employ 20 persons.

The Bluegrass State Skills Corporation (B.S.S.C.) has approved for several companies in Marion County funding for customized training programs for new workers at entry level up through advance skills levels, upgrading of present employees' skills, and the retraining of experienced workers.

A fitness center was constructed at the Marion County High School during 1990, funded by public donations, and is now fully equipped with the latest exercise equipment. The facility is open to the public during the evenings and used by high school students daily.

Planned

The Lebanon Water Works Company has tentative plans for several projects. Included is the construction of a dam and 940-million-gallon reservoir on Fagan Branch, and a raw water pump station near the Rolling Fork River at the Calvary Dam with about 14,000 feet of 20-inch raw water transmission line. The improvements will provide a supplemental raw water source for customers. Total combined cost of the projects is approximately \$5.8 million and construction could begin by mid-Summer 1991.

Application for a Certificate of Need for a total hospital replacement has been filed with the Human Resources Cabinet. If approved, construction will begin in late 1991.

The Marion County School System plans to construct a new middle school.