

1979

Industrial Resources: Mason County - Maysville

Kentucky Library Research Collections
Western Kentucky University, spcol@wku.edu

Follow this and additional works at: https://digitalcommons.wku.edu/mason_cty



Part of the [Business Administration, Management, and Operations Commons](#), [Growth and Development Commons](#), and the [Infrastructure Commons](#)

Recommended Citation

Kentucky Library Research Collections, "Industrial Resources: Mason County - Maysville" (1979). *Mason County*. Paper 9.
https://digitalcommons.wku.edu/mason_cty/9

This Report is brought to you for free and open access by TopSCHOLAR®. It has been accepted for inclusion in Mason County by an authorized administrator of TopSCHOLAR®. For more information, please contact topscholar@wku.edu.

INDUSTRIAL RESOURCES

MAYSVILLE

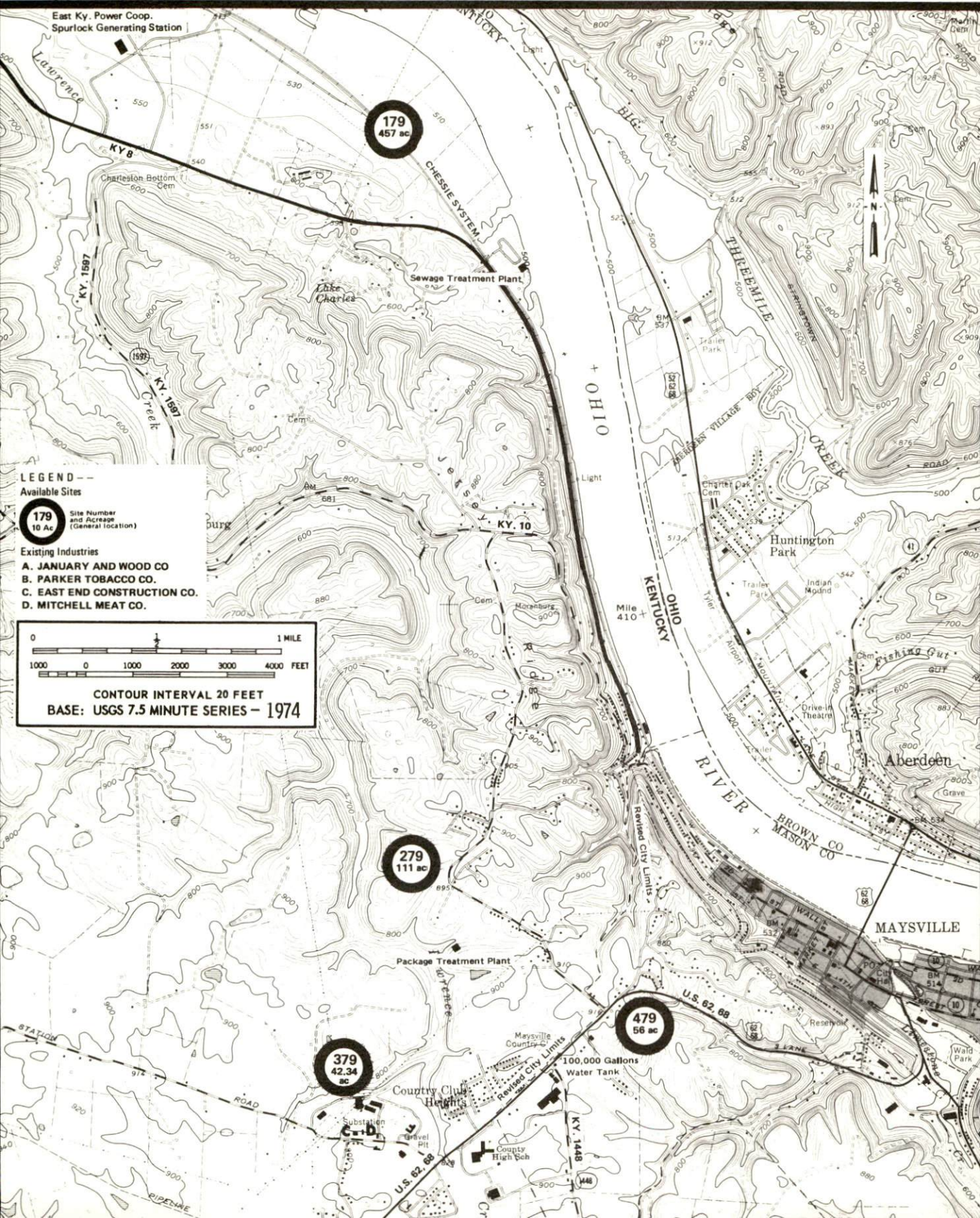
**Kentucky
first**



DEPARTMENT OF COMMERCE

MAYSVILLE, KENTUCKY --- Index to Industrial Sites --- 1979

For detailed data on individual sites, contact Mr. Robert Vance, P. O. Box 68, Maysville, Kentucky 41056 or the Kentucky Department of Commerce, Capital Plaza Tower, Frankfort, Kentucky 40601.



INDUSTRIAL RESOURCES

MAYSVILLE, KENTUCKY

Prepared by
The Kentucky Department of Commerce
Division of Research and Planning
in cooperation with
The Maysville-Mason County Chamber of Commerce

1979

TABLE OF CONTENTS

<u>Chapter</u>	<u>Page</u>
INDUSTRIAL SITES	i
SUMMARY OF INDUSTRIAL RESOURCES - MAYSVILLE, KENTUCKY	1
THE LABOR MARKET AREA	6
Population	6
Labor Force Characteristics of Residents, 1978	6
Maysville Manufacturing Firms, Their Products and Employment	7
Labor Organizations	9
Industrial Services	9
Estimated Male Labor Supply	10
Estimated Female Labor Supply	10
Average Weekly Wages by Industry, by Place of Work, 1978	11
Per Capita Personal Income	13
TRANSPORTATION	14
Rail	14
Highways	14
Truck Service	15
Air	16
Bus	17
Taxi	17
Rental Services	17
Water	17
POWER AND FUEL	18
Electricity	18
Natural Gas	18
Other Fuels	19
WATER AND SEWERAGE	20
Water	20
Sewerage	25
CLIMATE	26

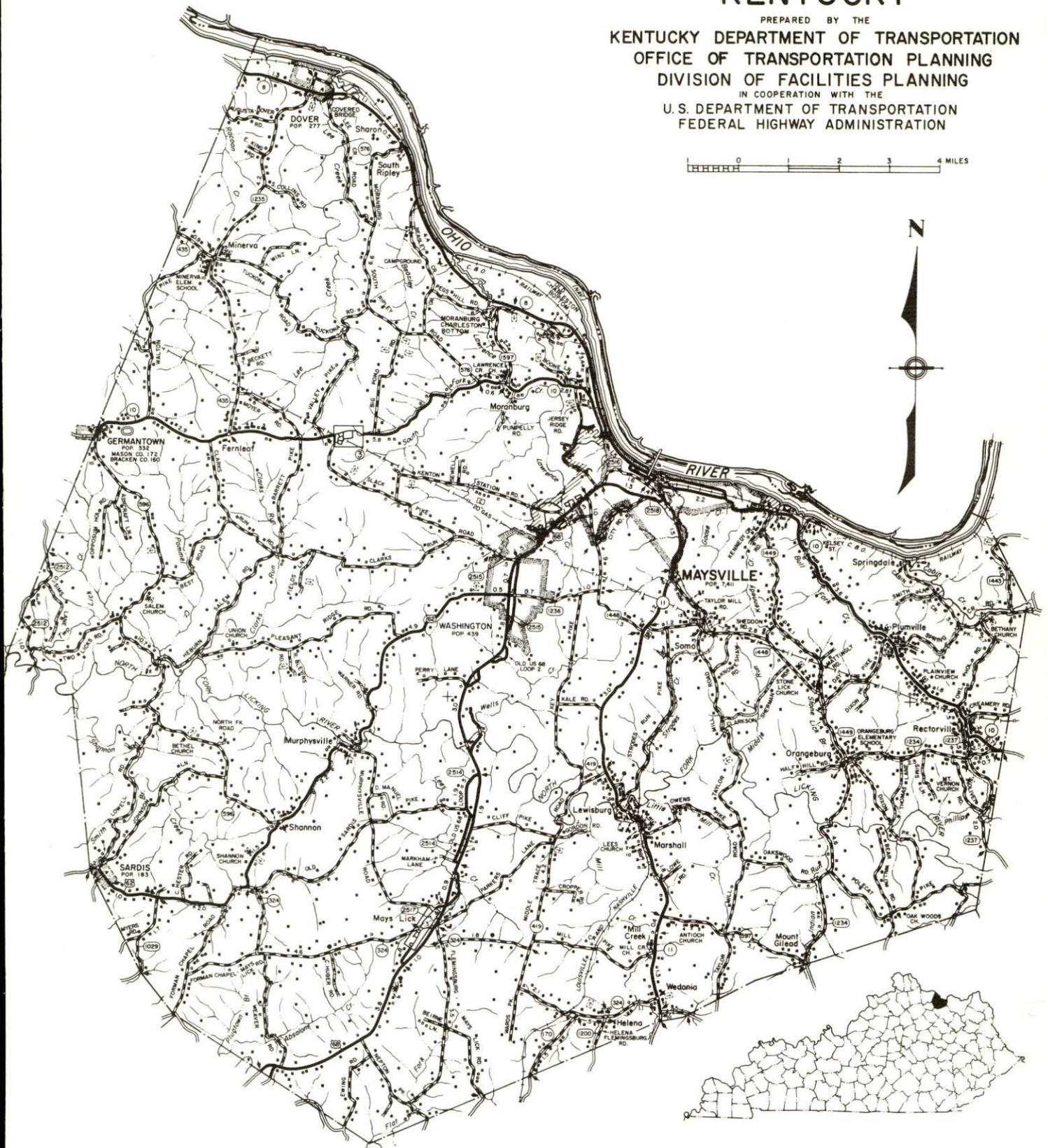
<u>Chapter</u>	<u>Page</u>
LOCAL GOVERNMENT	29
City	29
County	29
Assessed Value of Property	29
Property Taxes	29
Combined State and Local Rates Per \$100	
Valuation, 1978	30
Utilities Gross Receipts Tax for Schools	30
Planning and Zoning	30
Safety	31
Police	31
Fire	31
Rescue Service	31
Refuse Collection and Disposal	31
EDUCATION	33
Public Schools	33
Nonpublic Schools	33
Area Colleges and Universities	34
Vocational Schools	35
HEALTH	37
Local Medical Personnel	37
Hospitals	37
Other Medical Facilities	37
Ambulance Service	38
Public Health	38
OTHER LOCAL FACILITIES	41
Communications	41
Library Services	42
Religious Institutions	42
Financial Institutions	43
Hotels and Motels	43
Clubs and Organizations	43
RECREATION	45
COMMUNITY IMPROVEMENTS	48

1979 EDITION
GENERAL HIGHWAY MAP
MASON COUNTY
KENTUCKY

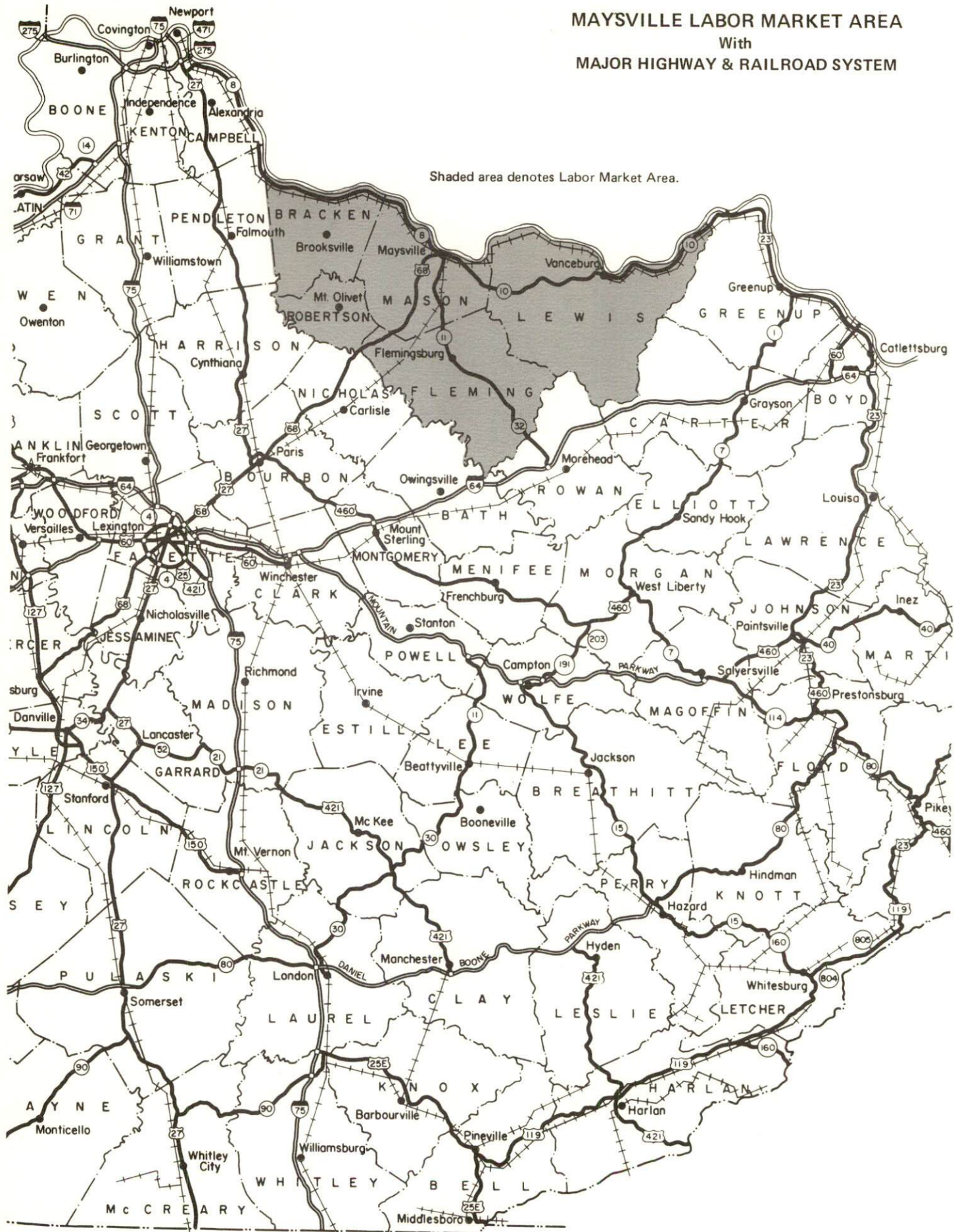
PREPARED BY THE
KENTUCKY DEPARTMENT OF TRANSPORTATION
OFFICE OF TRANSPORTATION PLANNING
DIVISION OF FACILITIES PLANNING
IN COOPERATION WITH THE
U.S. DEPARTMENT OF TRANSPORTATION
FEDERAL HIGHWAY ADMINISTRATION

0 1 2 3 4 MILES

N

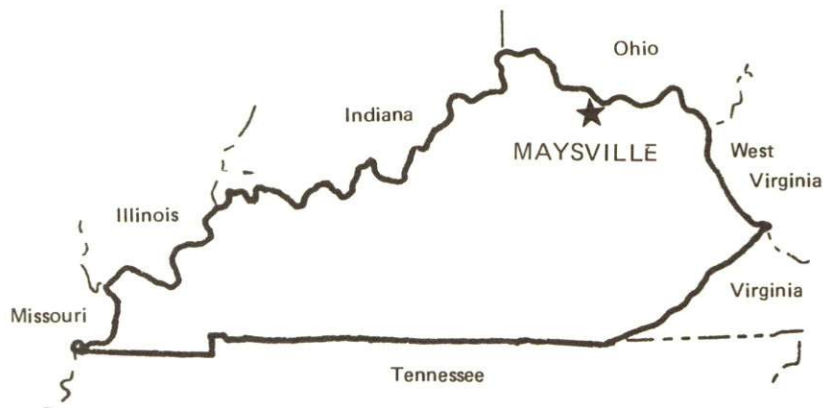


MAYSVILLE LABOR MARKET AREA With MAJOR HIGHWAY & RAILROAD SYSTEM



SUMMARY OF INDUSTRIAL RESOURCES MAYSVILLE, KENTUCKY

LOCATION



Road Distance in Miles:

Atlanta	429	Baltimore	539
Chicago	351	Detroit	323
New York	658	St. Louis	403

POPULATION

City of Maysville, 1976	7,076
Mason County, 1978	17,200
Labor Market Area, 1978	52,600
% Nonwhite, Mason County, 1977	10.4

LABOR ANALYSIS

Labor Market Area - Mason, Bracken, Fleming, Lewis and Robertson Counties

Estimated available workers from labor market area, 1978:

Male	1,789*	Female	1,621*
Unemployment rate, 1978		Labor Market Area	5.3%
Mason County	4.1%	Lewis County	7.6%
Bracken County	5.1%	Robertson County	7.1%
Fleming County	4.9%		

*The labor supply will be supplemented by the number of men and women in the adjoining Ohio counties of Brown and Adams who are available for industrial jobs.

Total employment, Mason County, 1978 - 8,921
Manufacturing employment in labor market area, 1978 - 4,996
Major local manufacturing plants:

<u>Name</u>	<u>Employment</u>
<u>Bluegrass Industries, Inc.</u>	<u>308</u>
<u>Browning Manufacturing Division, Emerson Electric Company</u>	<u>920</u>
<u>Carnation Company</u>	<u>126</u>
<u>Dravo Lime Company</u>	<u>150</u>
<u>January and Wood Company</u>	<u>261</u>
<u>Parker Tobacco Company, Inc.</u>	<u>420</u>
<u>Southwestern Tobacco Company, Inc.</u>	<u>150</u>
<u>U.S. Shoe Corporation, Inc.</u>	<u>252</u>

Labor unions in local manufacturing plants:

Teamsters; Textile Workers

TRANSPORTATION

Highways:

Nearest Interstate - I-64, 41 miles distant
U.S. Highways - U.S. 62, U.S. 68, and U.S. 52

Rail:

Railroads - The Chessie System and the Louisville & Nashville Railroad
Distance to nearest Chessie System piggyback - 64 miles

Truck:

Number of interstate motor carriers - 5; Local terminals - 0

Water:

Nearest navigable river - Ohio River at Maysville
Nearest public riverport - Riverport planned at Maysville

Air:

Nearest scheduled airline service - Blue Grass Field, Lexington
Distance - 71 miles; Airlines serving - Delta, Eastern, Piedmont
USAir, Tennessee Airways (commuter) and Vale International
(commuter)

Nearest local airport - Fleming-Mason Airport, Mason County
Distance - 6 miles; Runway length - 3,900 feet

UTILITIES AND SERVICES

Electricity:

Local distributor - Kentucky Utilities Company
Source of power - Kentucky Utilities Company

Natural Gas:

Local distributor - Columbia Gas of Kentucky, Inc.
Source of supply - Columbia Gas Transmission Corporation
Available for new industry - Yes

Other Fuels:

Number of area propane distributors - 4
Number of area distillate fuel oil distributors - 8

Water, treated:

Local supplier - Municipal
Excess municipal system capacity - 500,000 gpd
Storage capacity - 2,850,000 gallons
Planned improvements - 150,000-gallon storage tank

Water, raw:

Sources for industrial use - Ohio River and North Fork Licking River

Sewer:

Excess treatment capacity - 224,000 gpd

Industrial Services:

	<u>Location</u>	<u>Miles Distant</u>
Tool & Die, Machine & Pattern Shops	<u>Falmouth</u>	<u>39</u>
Metal Service Centers	<u>Lexington</u>	<u>67</u>
Heat Treating	<u>Georgetown</u>	<u>66</u>
Metal Finishers	<u>Cynthiana</u>	<u>47</u>
Electric Motor Repair	<u>Lexington</u>	<u>67</u>

CLIMATE

Temperature, Normal - 54.0 degrees F.
Precipitation, Normal - 39.04 inches
Snowfall, Mean Annual - 24.6 inches
Prevailing winds - South-southwest
Relative humidity (%) - 7 a.m. 81; 7 p.m. 64

GOVERNMENT

Type - Mayor-City Commission-City Manager

Police personnel - full-time - 22

Fire department personnel - full-time - 16, volunteer - 8

Fire insurance rating (A.I.A.), class - Inside city - 6
Outside city - 10

TAXES

Property Taxes:

Combined state and local rates per \$100 valuation, 1978
(100% assessment)

	<u>Inside City of Maysville</u>	<u>Outside City</u>
1. Land and buildings	\$1.093	\$0.786
2. Mfg. machinery, raw materials, goods in process, pollution control equipment	0.150	0.150
3. Finished goods, office equipment, vehicles, other tangibles	1.228	0.921
4. Intangibles (accounts receivable, notes, bonds, etc.)	0.250	0.250
5. Leaseholds in I. R. bond financed plants	0.015	0.015

Special local taxes:

Utilities tax - 3% of electric, gas, water, sewer, telephone
services (not county-wide)

EDUCATION

Nearest state vocational-technical school - Central Kentucky State
Vocational-Technical School, Lexington, 67 miles southwest

Area vocational education center - Maysville Area Vocational Education
Center, Maysville

College - Maysville Community College, Maysville

Public Schools:

High school enrollment - 1,071; Student/teacher ratio - 16-1

Junior high school enrollment - 171; Student/teacher ratio - 16-1

Elementary school enrollment - 2,208; Student/teacher ratio - 19-1

Nonpublic Schools:

Enrollment - 225; Student/teacher ratio - 13-1

FINANCIAL INSTITUTIONS

Banks - 3; Total assets - \$107,830,235.02
Savings & loan associations - 1; Total assets - \$8,760,054.00

COMMUNICATIONS

Local newspapers - Daily - The Ledger Independent; Weekly - The Advertiser
Local radio station - WFTM-AM & FM
Television reception - Cable service

MEDICAL

Number of physicians locally - 21; Number of dentists locally - 7
Hospital - Hayswood Hospital
Number of beds - 113 acute; 30 extended care

RELIGIOUS FACILITIES

Churches - 25
Nearest synagogues - Portsmouth, Ohio, 54 miles east;
Cincinnati, Ohio, 64 miles west

PUBLIC LODGING

Total number hotels and motels - 2; Total rooms - 22

RECREATION FACILITIES

Public golf courses - 1; Parks - 5; Tennis courts - 5;
Public swimming pools - 1; Country clubs - 1
Nearest Kentucky state park - Blue Licks Battlefield State Park, 25
miles southwest
Camping; Swimming; Fishing; Museum

THE LABOR MARKET AREA

Area	POPULATION		
	1978*	1970	Percent Nonwhite**
Maysville	7,076**	7,411	15.1
Labor Market Area	52,600	50,384	N/A
Mason County	17,200	17,273	10.4
Bracken County	7,700	7,227	0.9
Fleming County	11,700	11,366	2.6
Lewis County	13,900	12,355	0.2
Robertson County	2,100	2,163	0.7

*Provisional Estimates.

**1976 Population Estimates; 1970 Percent Nonwhite for city; 1977 Percent Nonwhite for counties.

Sources: U.S. Department of Commerce, Bureau of the Census, Census of Population, 1970. U.S. Department of Commerce, Bureau of the Census, Current Population Reports, Series P-25, No. 756, January 1979; Series P-26, No. 78-17, 1979. University of Louisville, Urban Studies Center, Population Research Unit, Kentucky's Population Disaggregations of 1977 Estimates, December 1978.

LABOR FORCE CHARACTERISTICS OF RESIDENTS, 1978

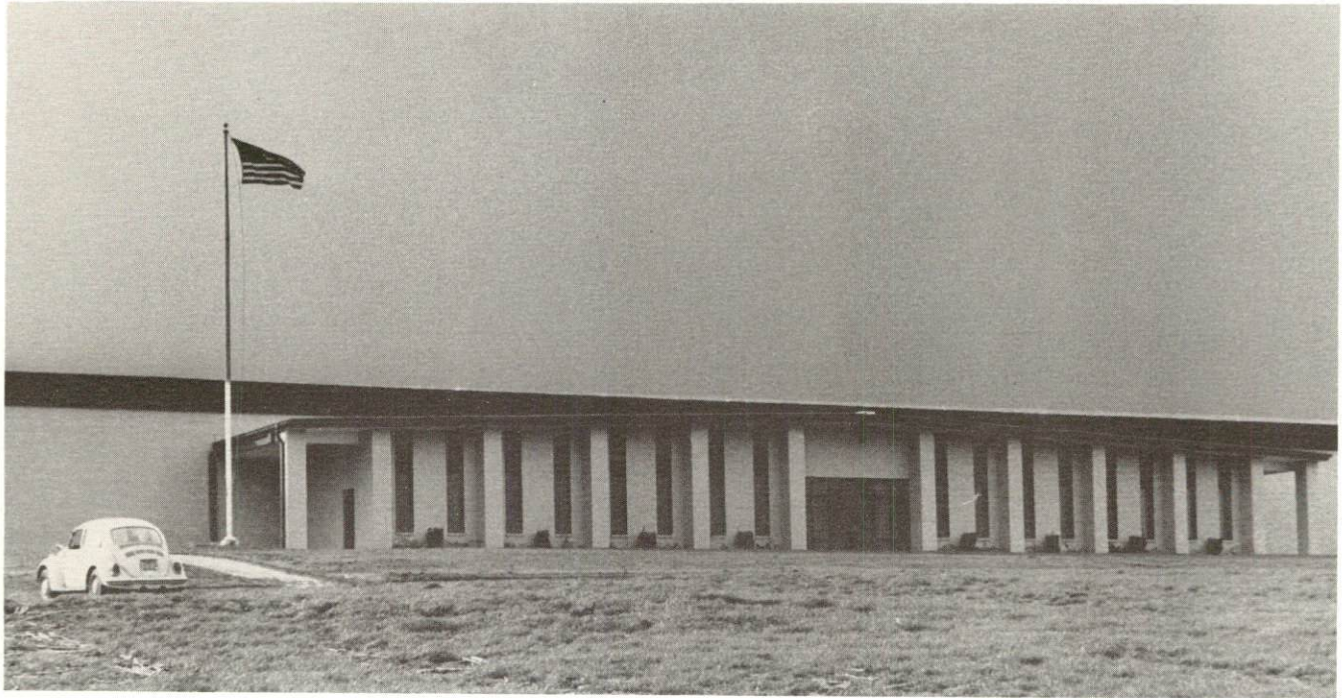
	Mason County	Labor Market Area
Civilian Labor Force	9,307	22,326
Employment	8,921	21,151
Agricultural	1,015	3,807
Nonagricultural	7,906	17,344
Unemployment	386	1,175
Rate of Unemployment (%)	4.1	5.3

Source: Kentucky Department for Human Resources, Kentucky Labor Force Estimates, Annual Averages, 1978.

MAYSVILLE MANUFACTURING FIRMS,
THEIR PRODUCTS AND EMPLOYMENT

Firm (Establishment date)	Product	Employment			Organized
		Total	Male	Female	
Bluegrass Industries, Inc. (1973)	Men's knit underwear	308	29	279	
Browning Manufacturing Division, Emerson Electric Company (1886)	Pulleys, V-belt drives, sprockets, ball and roller bearing units, gear reducers	920	800	120	
Carnation Company (1928)	Evaporated milk, tin cans	126	115	11	*
Clover Leaf Dairy Products Company (1948)	Fluid milk	24	23	1	
Dravo Lime Company (1974)	Lime and calcinating plant	150	144	6	
January and Wood Company (1851)	Cotton twine, cotton, rayon yarns	261	166	95	*
Magee's Bakery (1940)	Bakery products	4	1	3	
Maysville Ready Mix Concrete Company (1950)	Ready mixed concrete	30	26	4	*
Ohio Valley Fertilizer, Inc. (1951)	Fertilizer	9	8	1	
Parker Tobacco Company, Inc. (1932)	Tobacco processing	420	300	120	
Southwestern Tobacco Company, Inc. (1928)	Tobacco processing	150	75	75	
Standard Supply Company (1953)	Concrete block, precast concrete products	16	15	1	
Standard Tobacco Company (1932)	Concrete blocks and bricks, water tanks, burial vaults, parking curbs	22	20	2	

(Contd.)



BLUEGRASS INDUSTRIES, INC.



PARKER TOBACCO COMPANY - ONE OF FIVE NEW GREENHOUSES

<u>Firm (Establishment date)</u>	<u>Product</u>	<u>Employment</u>			<u>Organized</u>
		<u>Total</u>	<u>Male</u>	<u>Female</u>	
Sunier Machine Shop (1951)	Machine shop, electric motors, controls	2	2	0	
U. S. Shoe Corporation, Inc. (1972)	Ladies' shoes and boots	252	N/A	N/A	

*See Labor Organizations below.

Source: Kentucky Department of Commerce, Division of Research and Planning.

LABOR ORGANIZATIONS

<u>Union</u>	<u>Representing manufacturing workers at:</u>
International Brotherhood of Teamsters, Chauffeurs, Warehousemen and Helpers of America	Carnation Company; Maysville Ready Mix Concrete Company
United Textile Workers of America, AFL-CIO	January and Wood Company

INDUSTRIAL SERVICES

	<u>Location</u>	<u>Miles Distant</u>
Tool & Die, Machine & Pattern Shops	Falmouth	39
Metal Service Centers	Lexington	67
Heat Treating	Georgetown	66
Metal Finishers	Cynthiana	47
Electric Motor Repair	Lexington	67

Source: Kentucky Directory of Selected Industrial Services, 1977.

ESTIMATED MALE LABOR SUPPLY
MAYSVILLE LABOR MARKET AREA*

Area	Current				Future
	Total	Not in Labor Force	Unemployed	Under- employed	Reaching 18 years of age before 1985
Labor Market					
Area	1,789	366	563	860	2,458
Mason	598	118	180	300	784
Bracken	219	55	64	100	323
Fleming	393	85	118	190	552
Lewis	503	92	171	240	697
Robertson	76	16	30	30	102

*In addition, the labor supply will be supplemented by the number of men in the adjoining Ohio counties of Brown and Adams who are available for industrial jobs.

Sources: Kentucky Department for Human Resources, Kentucky Labor Supply Estimates by County, 1978. Kentucky Department of Commerce, Future Labor Supply Before 1985.

ESTIMATED FEMALE LABOR SUPPLY
MAYSVILLE LABOR MARKET AREA*

Area	Current				Future
	Total	Not in Labor Force	Unemployed	Under- employed	Reaching 18 years of age before 1985
Labor Market					
Area	1,621	159	612	850	2,383
Mason	572	56	206	310	779
Bracken	222	23	69	130	317
Fleming	332	36	126	170	522
Lewis	397	37	180	180	683
Robertson	98	7	31	60	82

*In addition, the labor supply will be supplemented by the number of women in the adjoining Ohio counties of Brown and Adams who are available for industrial jobs.

Sources: Kentucky Department for Human Resources, Kentucky Labor Supply Estimates by County, 1978. Kentucky Department of Commerce, Future Labor Supply Before 1985.

AVERAGE WEEKLY WAGES BY INDUSTRY,
BY PLACE OF WORK, 1978

	<u>Mason County</u>	<u>Bracken County</u>	<u>Fleming County</u>
All Industries	\$184.65	\$177.04	\$156.14
Mining & Quarrying	*	0	*
Contract Construction	233.07	*	168.16
Manufacturing	209.96	228.77	151.45
Transportation, Communications & Public Utilities	298.37	228.39	249.69
Wholesale & Retail Trade	137.18	123.46	140.75
Finance, Insurance & Real Estate	181.48	*	177.06
Services	149.63	92.26	127.15
Other	*	0	66.43

	<u>Lewis County</u>	<u>Robertson County</u>
All Industries	\$130.52	\$158.94
Mining & Quarrying	0	0
Contract Construction	*	95.91
Manufacturing	*	0
Transportation, Communications & Public Utilities	142.46	*
Wholesale & Retail Trade	104.72	87.34
Finance, Insurance & Real Estate	*	*
Services	117.12	109.84
Other	0	*

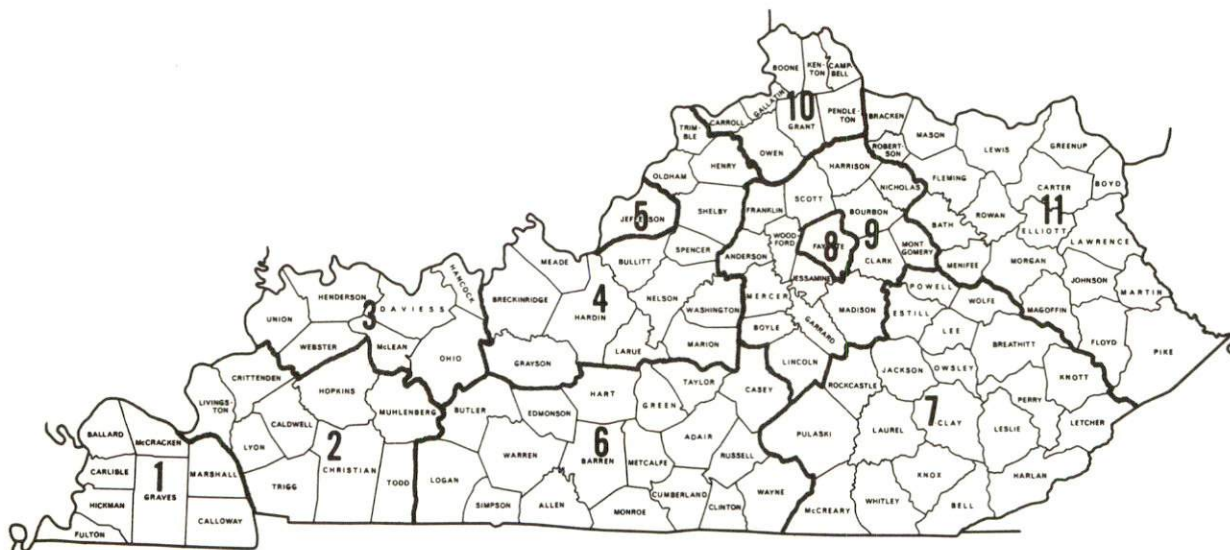
*Not disclosed.

Note: Excludes domestic workers, railway workers; certain nonprofit corporations; majority of federal, state, and local government workers; and self-employed workers.

Source: Kentucky Department for Human Resources, Average Weekly Wages of Workers Covered by Kentucky Unemployment Insurance Law, 1978.

Occupational wage rates for specific industries are usually not available to most government agencies, and wage data furnished to state employment agencies by individual industrial employers is protected from disclosure by federal law. The most reliable up-to-date wage information can be obtained by direct contact with local employers.

Associated Industries of Kentucky, a voluntary organization of Kentucky businesses, regularly collects occupational wage rates and fringe benefits data from participating member firms. Data is compiled for over 127 clearly defined office, production, and service occupations. Tabulations are published for eleven regions of Kentucky, as shown on the map below. It should be noted that the data may be weighted by the preponderance of firms in the larger cities and may be somewhat higher than the rates paid in the smaller communities. Data from these tabulations are available, upon request, from the Kentucky Department of Commerce, Frankfort, Kentucky 40601.



Associated Industries of Kentucky Area Wage Surveys

PER CAPITA PERSONAL INCOME

<u>Area</u>	<u>1977</u>	<u>1973</u>	<u>Percent Change</u>
Mason County	\$6,008	\$3,896	54.2
Labor Market Area			
Range	\$3,665 - 6,008	\$2,479 - 3,896	N/A
Kentucky	5,989	4,021	48.9
U.S.	7,026	4,980	41.1

Source: U.S. Department of Commerce, Bureau of Economic Analysis,
April 1979.

TRANSPORTATION

Rail

The Chessie System and the Louisville & Nashville Railroad provide rail service to Maysville.

Maysville is located on a main line of the Chessie System. Services include: one eastbound and one westbound freight stops daily, two eastbound and two westbound through freights daily, switching facilities, team track space for 50 to 60 cars, and siding space for 150 cars. The nearest Chessie System piggyback facilities are located at Cincinnati, Ohio, 64 miles northwest of Maysville. For details on routing, schedules, rates, and services, contact:

The Chessie System
Real Estate and Industrial Development
808 Dixie Terminal Building
Cincinnati, Ohio 45202
(513) 369-5258

Maysville is located on a branch line of the Louisville & Nashville Railroad. For details on routing, schedules, rates, and services, contact:

Manager of Industrial Development
Louisville & Nashville Railroad
908 West Broadway
Louisville, Kentucky 40201
(502) 587-5723

Highways

U.S. Highways 62 and 68 and Kentucky Highways 10 and 11 serve the Maysville area. The Simon Kenton Memorial Bridge provides access to U.S. 52 which is located just across the Ohio River at Aberdeen, Ohio. U.S. 52 provides easy access to Cincinnati, Ohio, to the west and Portsmouth, Ohio, to the east.

Interchanges of Interstate 64 are located 41 miles southeast of Maysville at Morehead and 63 miles to the southwest at Lexington. Access to Interstate 75 is 63 miles southwest of Maysville at Lexington and 64 miles northwest of Maysville at Cincinnati, Ohio. Access to I-74 and I-71 is also available at Cincinnati.

Improvements to highways serving the Maysville area include the reconstruction of a 2.2 mile section of Kentucky 11 between Lewisburg and Maysville, now under way, and the planned construction of a 5.7 mile section of Kentucky 10 which will be rerouted from 3.4 miles east of the Bracken County line to U.S. 62/68 1.2 miles northeast of Washington.

Truck Service

<u>Company</u>	<u>Home Office</u>
Budig Western*	1100 Gest Street Cincinnati, Ohio 45203
General Highway Express, Inc.**	2280 Industrial Drive Sidney, Ohio 45365
Interstate Motor Freight System**	134 Grandville Avenue S.W. Grand Rapids, Michigan 49503
McDaniel Motor Express, Inc.***	1115 Winchester Road Lexington, Kentucky 40505
Reinhardt Transfer Company*	1410 Tenth Street Portsmouth, Ohio 45662
Smith's Transfer Corporation**	P. O. Box 1000 Staunton, Virginia 24401

<u>Other Freight Services</u>	<u>Nearest Shipping Center</u>
Purolator Courier Corporation****	Lexington, 67 miles distant
United Parcel Service****	Maysville

HIGHWAY MILES AND TRUCK TRANSIT TIME IN DAYS FROM MAYSVILLE, KENTUCKY, TO SELECTED MARKET CENTERS

City	Delivery		City	Delivery	
	Highway Miles	Time TL		Highway Miles	Time TL
Atlanta, Ga.	429	3	Los Angeles, Ca.	2,247	7
Baltimore, Md.	539	2	Louisville, Ky.	140	2
Birmingham, Ala.	465	3	Nashville, Tenn.	277	3
Chicago, Ill.	351	3	New Orleans, La.	794	3
Cincinnati, Ohio	64	1	New York, N. Y.	658	4
Cleveland, Ohio	256	2	Pittsburgh, Pa.	298	3
Detroit, Mich.	323	2	St. Louis, Mo.	403	2
Knoxville, Tenn.	242	3			

Source: Delivery Time Only - Budig Western, 1100 Gest Street,
Cincinnati, Ohio 45203.

*Interstate and Intrastate.

**Interstate only.

***Intrastate only.

****For regular scheduled pickups or for occasional pickups, arrangements must be made with the Louisville office of Purolator Courier Corporation or United Parcel Service.

Air

Local

Fleming-Mason Airport
Location: 6 nautical miles south of Maysville
Runways: 1 paved
Length: 3,900 feet
Traffic
Control: Segmented circle and wind cone
Lighting: Medium intensity runway lighting and
beacon sundown to sunrise
Services: 80, 100 and Jet A fuel; flight
instruction; mechanic on duty;
courtesy car; open 24-hours daily

Nearest Scheduled Airline Service

Blue Grass Field
Location: 4.5 miles west of Lexington, 71 miles
southwest of Maysville
Runways: 2 paved
Length: 6,500 feet; 3,500 feet
Traffic
Control: Tower; radar services - arrival/ departure,
Stage II contact approach control
approximately 20 nautical miles out,
ground control; Automatic Terminal
Information Service
Lighting: Approach lighting system, beacon,
runways and obstructions lighted
Services: Delta, Eastern, Piedmont, USAir,
Tennessee Airways (commuter) and
Vale International (commuter)
Airlines; Fuel - 24-hour service,
80, 100, and jet fuel; Repair
service - Major A & E repairs,
Certified Avionics repair station;
National Weather Service; restaurant;
flight instructions; charter service;
storage; taxi; limousine; car rentals
Air Freight
Service: Air freight terminal regularly serviced
by freight carrying airlines

Bus - City Transit (Intracity)

Taxi - Two companies, 24-hour service

Rental Services - Car, truck and trailer rentals

Water

Maysville is located on the Ohio River. At present, Carey and Adams operates a terminal on the Ohio River with open storage facilities, and Crounse Corporation operates a commercial barge line with load service offices in Maysville. Four river terminals for private use only are operated within 5 miles of Maysville.

The Maysville-Mason County Port Authority is planning to develop a public port at Maysville which will serve as a general cargo facility.

POWER AND FUEL

Electricity

Company serving Maysville and parts of Mason County - Kentucky
Utilities Company
Source of power - Kentucky Utilities Company
Total generating capacity - 2,238,400 KW
For industrial rates contact:

Industrial Development Department
Kentucky Utilities Company
120 South Limestone Street
Lexington, Kentucky 40507
(606) 255-1461

Company serving parts of Mason County - Fleming-Mason Rural
Electric Cooperative Corporation
Source of power - East Kentucky Power Cooperative
Total generating capacity - 867,000 KW
For industrial rates contact:

Industrial Development Division
East Kentucky Power Cooperative
P. O. Box 707
Winchester, Kentucky 40391
(606) 744-4812

and/or

Fleming-Mason RECC
Elizaville Road
P. O. Drawer 328
Flemingsburg, Kentucky 41041
(606) 845-2661

Natural Gas

Company serving Maysville - Columbia Gas of Kentucky, Inc.
Source of supply - Columbia Gas Transmission Corporation
Size of transmission mains - 8-inch (supplier);
6 and 8 inches (distributor)
Distribution mains - 2 to 10 inches
Distribution pressure - 10-inch water column
Btu content - 1,025 per cubic foot
Specific gravity - 0.62
For rates and supplies contact:

Columbia Gas of Kentucky, Inc.
State National Bank Building
33 West Second Street
Maysville, Kentucky 41056
(606) 564-3472

Other Fuels

Propane (Within 15 miles)

Long Blue Flame Gas Company
200 West Second Street
Manchester, Ohio 45144

Stan Harvey Gas Company
919 Forest Avenue
Maysville, Kentucky 41056

Ripley Gas Company
28 North Second Street
Ripley, Ohio 45617

Williams Energy Company
Minerva, Kentucky 41062

Fuel oils (Within 15 miles)

Distillate fuel oil -

Ashland Petroleum Company
(bulk plant)
Blue Run Road
Maysville, Kentucky 41056

Finch Oil Company
U.S. Highway 68
Maysville, Kentucky 41056

Bowman Fuel, Inc.
Stark Avenue
Manchester, Ohio 45144

Gulf Oil Products Distributor
Lexington Street
Maysville, Kentucky 41056

Breslin Oil Company
Lexington Street
Maysville, Kentucky 41056

M. C. Russell Company
Texaco Products
Lexington Street
Maysville, Kentucky 41056

Chevron U.S.A., Inc.
Blue Run Road
Maysville, Kentucky 41056

Union Oil Company
(bulk plant)
Blue Run Road
Maysville, Kentucky 41056

Residual fuel oil - Arrangements must be made with the refinery.

Low sulphur content coal - Available in Kentucky.

WATER AND SEWERAGE

Water

Company serving Maysville - Maysville Utility Commission*
Municipal Building
Bridge Street
Maysville, Kentucky 41056
(606) 564-4046

Source - Ohio River

Treatment plant capacity - 2,400,000 gallons per day**

Average daily consumption - 1,400,000 gallons**

Peak daily consumption - 1,900,000 gallons**

Type treatment - Coagulation, filtration, chlorination, fluoridation

Storage capacity - 2,850,000 gallons

Size lines - 2 to 16 inches

Average pressure - 150 psi

Average temperature - 65 degrees F.

MONTHLY WATER RATES FOR WHOLESALE AND INDUSTRIAL CONSUMERS

First	1,000 gallons	\$3.10
Next	3,000 gallons	1.55 per M gallons
Next	6,000 gallons	1.32 per M gallons
Next	40,000 gallons	1.01 per M gallons
Next	200,000 gallons	.62 per M gallons
Over	250,000 gallons	.45 per M gallons

A surcharge of 25 percent of the water bill is charged to customers outside the city limits who do not pay the sewerage charge.

(Contd.)

*Addition of a 150,000-gallon storage tank and several 10-inch feeder mains is planned.

**Kentucky Department for Natural Resources and Environmental Protection.

MINIMUM CHARGES

3/4-inch meter	\$ 3.10 per month
1-inch meter	7.74 per month
1 1/2-inch meter	23.23 per month
2-inch meter	38.72 per month
2 1/2-inch meter	46.46 per month
3-inch meter	61.95 per month
4-inch meter	77.44 per month
6-inch meter	154.88 per month

Tap-on charge:

3/4-inch	\$ 90
1-inch	100
1 1/2-inch	125
2-inch	150
Above 2-inch	Actual cost of installation

Yearly Private Fire Protection Rates

4-inch connection	\$150 plus tax
6-inch connection	222 plus tax
8-inch connection	372 plus tax
10-inch connection	558 plus tax

Public Fire Protection Rates

\$5.50 per plug per month for all public
fire hydrants in excess of 97

Name of water district - Western Mason County Water District

Route 1

Dover, Kentucky 41034

(606) 882-3141

Area served - Dover, Minerva and Germantown

Date when water district began operating - 1960

Source of raw water - Wells

Capacity of treatment plant - 216,000 gallons per day*

Type of treatment - Chlorination and fluoridation

Average amount of water used in a 24-hour period - 120,000 gallons*

Storage capacity - 150,000 gallons

Average pressure - 80 psi

Size lines - 2, 3, 4 and 6 inches

Bi-monthly rates -

First	3,000 gallons	\$10.00 (Minimum)
Next	3,000 gallons	1.50 per M gallons
Next	2,000 gallons	1.00 per M gallons
Next	12,000 gallons	.80 per M gallons
Over	20,000 gallons	.70 per M gallons

Tap-on charge: Residential - \$225 (road crossing
and copper extra)

Name of water district - Washington-Lewisburg Water District

P. O. Box 536

Maysville, Kentucky 41056

(606) 564-9333

Area served - Washington, Lewisburg and rural areas between

Date when water district began operating - 1964

Source of supply of treated water - Maysville Utility Commission

Average amount of water used in a 24-hour period - 170,000 gallons

Peak amount of water used in a 24-hour period - 195,000 gallons

Storage capacity - 250,000 gallons

Average pressure - 50 psi

Average temperature - 50 degrees F.

Size lines - 4, 6 and 8 inches

Rates -

Residential

First	3,000 gallons	\$7.50 (Minimum)
Next	27,000 gallons	1.25 per M gallons
Over	30,000 gallons	1.00 per M gallons

Commercial

First	40,000 gallons	\$55.00
Over	40,000 gallons	1.00 per M gallons

Tap-on charge: Residential - \$200

*Kentucky Department for Natural Resources and Environmental Protection.

Name of water district - Western Lewis-Rectorville Water and
Gas District
P. O. Box 633
Maysville, Kentucky 41056
(606) 564-9333

Area served - Eastern Mason County and western Lewis County

Date when water district began operating - 1961

Source of raw water - 3 wells

Capacity of treatment plant - 216,000 gallons per day*

Type of treatment - Chlorination

Average amount of water used in a 24-hour period - 156,000 gallons

Peak amount of water used in a 24-hour period - 180,000 gallons

Storage capacity - 200,000 gallons

Average pressure - 45 psi

Average temperature - 40 degrees F.

Size lines - 2 to 8 inches

Rates -

First	1,000 gallons	\$3.75 (Minimum)
Next	2,000 gallons	1.50 per M gallons
Next	2,000 gallons	1.00 per M gallons
Next	5,000 gallons	.85 per M gallons
Next	5,000 gallons	.75 per M gallons
Over	15,000 gallons	.65 per M gallons

Tap-on charge: Residential - \$225

*Kentucky Department for Natural Resources and Environmental Protection.

Name of water district - Southern Mason County Water District
Route 2, Box 275-A
Mayslick, Kentucky 41055
(606) 763-6216

Area served - Mayslick and southwestern Mason County

Date when water district began operating - 1965

Source of supply of treated water - Western Fleming County
Water District

Average amount of water used in a 24-hour period - 60,000 gallons

Peak amount of water used in a 24-hour period - 68,000 gallons

Storage capacity - 115,000 gallons

Average pressure - 80 psi

Size lines - 2, 4 and 6 inches

Rates -

First	1,000 gallons	\$9.25 (Minimum)
Next	4,000 gallons	2.50 per M gallons
Next	5,000 gallons	2.20 per M gallons
Over	10,000 gallons	2.00 per M gallons

Tap-on charge:

3/4-inch meter	\$200
1-inch meter	280
1 1/2-inch meter	490
2-inch meter	630

Surface water sources - Ohio River and North Fork Licking River

Average discharge - Ohio River at Greenup Dam - 92,110 cfs
(10 years, USGS); North Fork Licking River near Lewisburg -
149 cfs (32 years, USGS)

Expected ground water yield - 500 to 1,000 gpm along Ohio River,
5 to 50 gpm in a very small section in north central part of
county, 5 gpm or less over remainder of county

Sewerage

Company serving Maysville - Maysville Utility Commission*
Municipal Building
Bridge Street
Maysville, Kentucky 41056
(606) 564-4046

Design capacity - 1,424,000 gallons per day**

Average daily flow - 1,200,000 gallons**

Treatment - Primary and secondary

Type treatment - Clarifier, aeration, activated sludge, drying
beds, chlorine contact tank, digester

Treated effluent discharged into - Ohio River

Size of sanitary mains - 8 to 24 inches

Size of storm mains - 8 to 54 inches

Rates - 90 percent of monthly water bill

Tap-on charge: \$10 inspection fee after owner has sewer tap
installed at own expense

*Plans are under way for the Maysville Utility Commission to begin
providing sewerage service to the community of Washington.

**Kentucky Department for Natural Resources and Environmental Protection.

CLIMATE

Mason County

Temperature

Normal (30-year record)	54.0 degrees
Average annual 1978	51.0 degrees
Record highest, August, 1962 (17-year record)	102.0 degrees
Record lowest, January, 1977 (17-year record)	-25.0 degrees
Normal heating degree days (30-year record)	5,070
(Heating degree day totals are the sums of negative departures of average daily temperatures from 65 degrees F.)	

Precipitation

Normal (30-year record)	39.04 inches
Mean annual snowfall (31-year record)	24.60 inches
Total precipitation 1978	46.83 inches
Mean number days precipitation (.01 inch or more) (31-year record)	129
Mean number days thunderstorms (31-year record)	44

Prevailing Winds (16-year record)

South-southwest

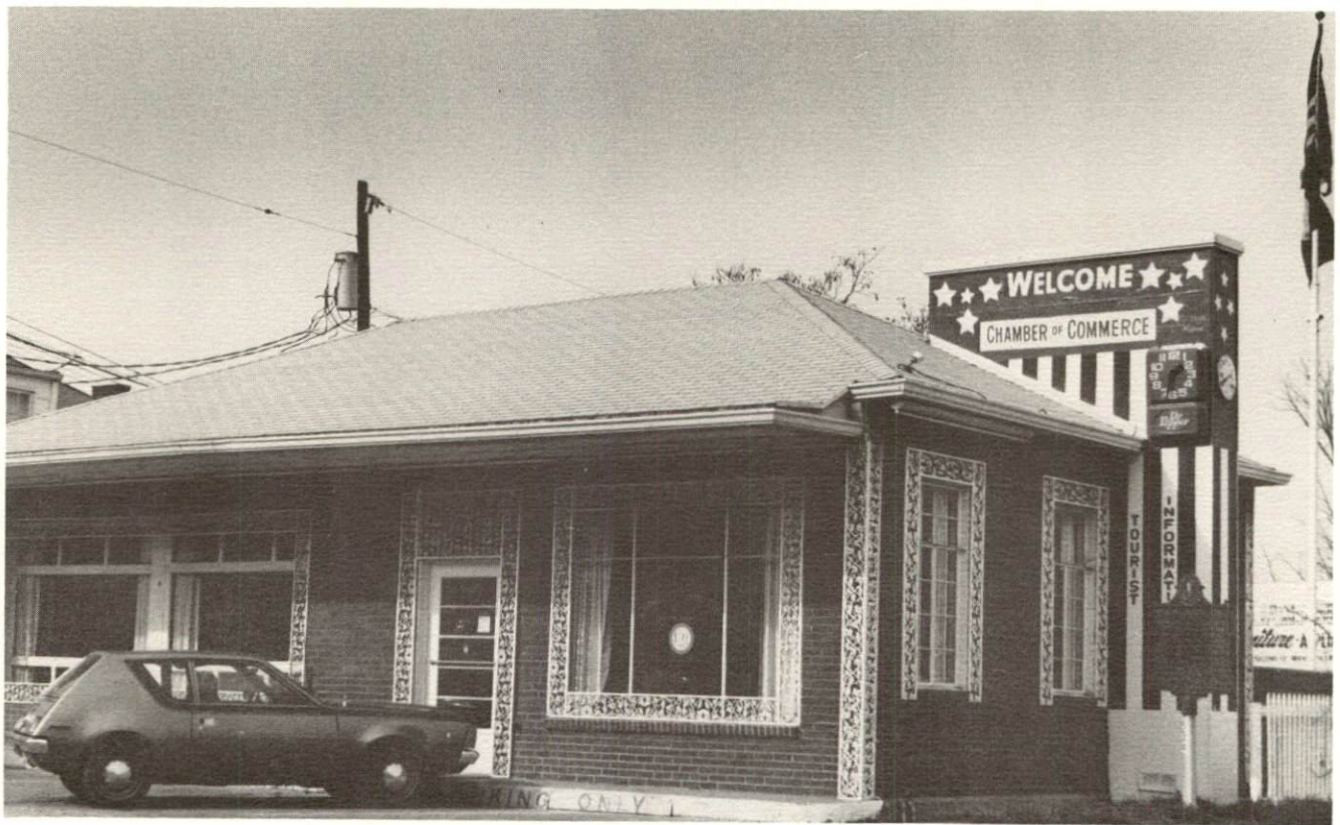
Relative Humidity (16-year record)

1 a.m.	77 percent
7 a.m.	81 percent
1 p.m.	59 percent
7 p.m.	64 percent

Source: U.S. Department of Commerce, Environmental Science
Services Administration, Climatological Data, 1978.
Station of record: Cincinnati, Ohio, Greater Cincinnati Airport.



MASON COUNTY COURTHOUSE



MAYSVILLE-MASON COUNTY CHAMBER OF COMMERCE



MAYSVILLE PUBLIC SAFETY BUILDING

LOCAL GOVERNMENT

City

Structure - Mayor - 4-year term; 4 commissioners - 2-year terms;
city manager

Budget 1978-79 - General Fund \$1,683,909
Water and Sewer Fund 498,000 (estimate)

Fees and licenses - Annual occupational license fees for manufacturers are: \$150 for firms with 50 or less employees, \$225 for firms with 100 or less employees, and \$50 for each 100 employees or fraction thereof in addition to the above fees; regulatory business license fees range from \$7.50 to \$600 annually; occupational license tax of 1½ percent of wages, salaries and commissions

County

Structure - County Judge/Executive - 4-year term
3 commissioners - 4-year terms

Budget 1978-79 - General Fund \$342,500; Road Fund \$81,800

Assessed Value of Property

<u>Classes of Property</u>	<u>Maysville (1978)</u>	<u>Mason County (1978-79)</u>
Real Estate	\$63,444,950	\$172,954,150
Tangibles	18,907,562	39,904,777

Property Taxes

All property in Kentucky is assessed at 100 percent of fair cash value.

Land and buildings are taxed by the state and may be taxed by local jurisdictions. The state rate is \$0.315 per \$100 of assessed valuation.

Manufacturing machinery, raw materials inventories, pollution control equipment, and goods in the process of manufacture are not subject to local taxation. The state rate is \$0.15 per \$100.

Other tangible personal property owned by manufacturers (automobiles, trucks, finished goods, office furniture, office equipment) is taxed by the state at \$0.45 per \$100 and may be taxed by local jurisdictions.

Property stored in public warehouses in a transit status is not subject to local taxation. The state rate is only \$0.015 per \$100.

Intangible personal property located in Kentucky (money in hand, shares of stock, notes, bonds, accounts receivable, and other credits) is taxed by the state at \$0.25 per \$100, and is not subject to local taxation.

Private leaseholds in industrial facilities owned by cities or counties and financed by industrial revenue bonds are subject to a state tax of \$0.015 per \$100 of value (essentially the lessee's equity, adjusted for appreciation or depreciation). Local taxation is not permitted.

Combined State and Local Rates Per \$100 Valuation, 1978*
(100% assessment)

	<u>Inside City of Maysville</u>	<u>Outside City</u>
1. Land and buildings	\$1.093	\$0.786
2. Mfg. machinery, raw materials, goods in process, pollution control equipment	0.150	0.150
3. Finished goods, office equipment, vehicles, other tangibles	1.228	0.921
4. Intangibles (accounts receivable, notes, bonds, etc.)	0.250	0.250
5. Leaseholds in I. R. bond financed plants	0.015	0.015

Utilities Gross Receipts Tax for Schools

A 3 percent tax is levied on utilities receipts for schools in the Mason County School System. Tax is paid by all consumers of utilities as an add-on to the utilities bills. Exempted are receipts from utilities services that are resold and the receipts from the sale of energy or energy producing fuels that exceed 3 percent of the cost of production in manufacturing, processing, mining or refining.

Planning and Zoning

Joint agency - Maysville-Mason County Joint Planning Commission**
 Zoning enforced - Within the city of Maysville and the city of Washington
 Subdivision regulations enforced - Within the city of Maysville and 5 miles beyond city limits
 Local codes enforced - Housing and building codes in Maysville
 Mandatory state codes enforced - Plumbing, National Fire Protection Association Code, National Building Code (for major buildings and residential construction containing more than 12 bedrooms per building)

*Kentucky Department of Commerce.

**Includes Mason County and the cities of Maysville and Washington.

Safety

<u>Police</u>	<u>Maysville</u>	<u>Mason County</u>
Total staff	22	5
Radio-patrol cars	5	2

Fire

American Insurance Association Fire Rating	6	10
Full-time staff	16	
Volunteers	8	Approximately 100*

Rescue Service

Maysville Rescue Squad (operated by the Maysville Fire Department):
Equipment - Rescue squad truck equipped with two cots, resuscitator, and other medical equipment and supplies
Personnel training - Standard first aid, multimedia first aid, emergency medical technician training

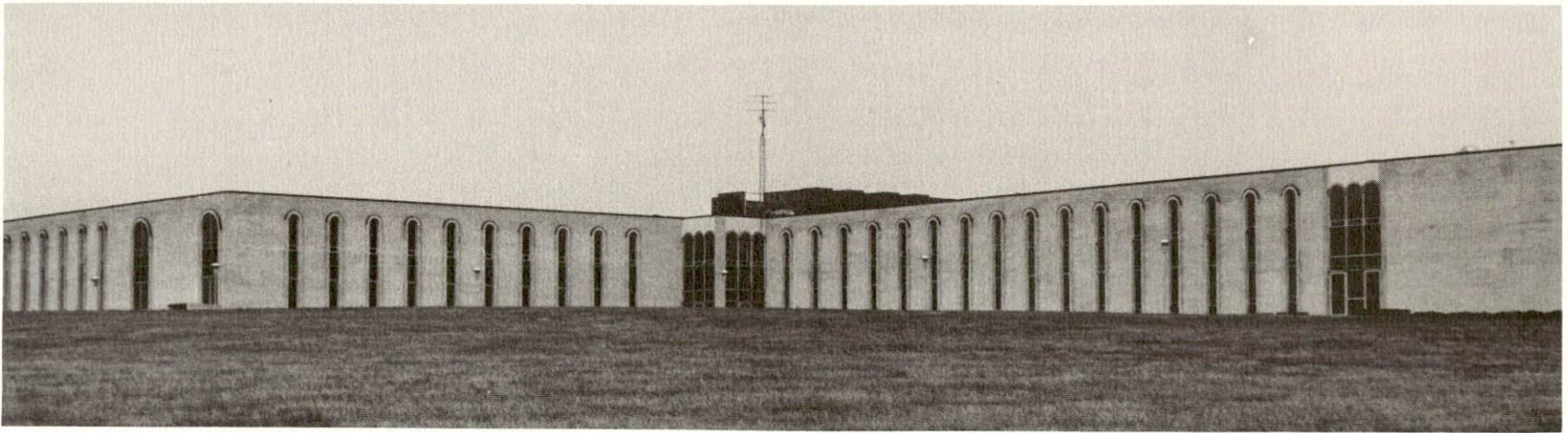
Refuse Collection and Disposal

	<u>Maysville**</u>
Type service	Municipal
Fee charged:	
residential	None
business	None
industrial	None
Collection frequency:	
residential	Weekly
business	Weekly
industrial	Weekly
Trash pickup	Weekly
Disposal method	Sanitary landfill

Several private companies serve Mason County and fees vary according to the volume and frequency of collection.

*There are six volunteer fire departments serving Mason County.

**The City does not provide refuse collection service outside the city limits, but manufacturing firms can make arrangements with the city to use the landfill.



MAYSVILLE COMMUNITY COLLEGE



MASON COUNTY HIGH SCHOOL

EDUCATION

Public Schools

	<u>Maysville Independent</u>	<u>Mason County</u>
Total Enrollment (Spring 1979)	952	2,498
Elementary	503*	1,705
Junior High	171	
High School	278	793
Student-Teacher Ratio	16-1	19-1
Elementary	18-1	19-1
Junior High	16-1	
High School	13-1	18-1
Accreditation	Southern Association of Colleges and Schools	
Percent High School Graduates to College	44.3	43.9
Expenditures Per Pupil (1977-78)	\$949.71	\$961.88
Bonded Indebtedness, June 30, 1978	\$768,000	\$2,732,000**

Nonpublic Schools

	<u>St. Patrick's</u>
Total Enrollment	225
Elementary	135
High School	90
Student-Teacher Ratio	13-1
Elementary	15-1
High School	11-1

*Includes kindergarten enrollment.

**Includes \$970,000 refunding issue.

Area Colleges and Universities

<u>Name</u>	<u>Location (Miles distant)</u>	<u>Enrollment (Fall, 1978)</u>	<u>Highest Degree Conferred</u>
Maysville Community College	Maysville	374	Associate
Morehead State University	Morehead (44)	7,681	Masters, Specialist*
Shawnee State Community College	Portsmouth, Ohio (54)	1,687	Associate and Baccalaureate**
College of Mt. St. Joseph on the Ohio (Women)	Cincinnati, Ohio (64)	1,224	Baccalaureate
Edgecliff	Cincinnati, Ohio (64)	618	Academic and Professional
Hebrew Union College	Cincinnati, Ohio (64)	154	Doctorate
University of Cincinnati	Cincinnati, Ohio (64)	37,736	Academic and Professional
Xavier University	Cincinnati, Ohio (64)	6,385	Masters
Georgetown College	Georgetown (66)	1,092	Masters
Lexington Technical Institute	Lexington (67)	1,867	Associate
Transylvania University	Lexington (67)	789	Masters***
University of Kentucky	Lexington (67)	22,463	Doctorate, M.D., D.M.D., J.D.
Thomas More College	Ft. Mitchell (70)	1,276	Baccalaureate
Northern Kentucky University	Highland Heights (70)	6,287	Masters, J.D.****

*Joint doctoral degree programs are offered in cooperation with the University of Kentucky, Lexington.

**Baccalaureate degree issued by Ohio University; classes taught on the Shawnee State Community College campus.

***Courses in the masters degree program are taught on the Transylvania campus by Xavier University of Cincinnati faculty members. The degree is issued by Xavier University.

****Salmon P. Chase College of Law is part of Northern Kentucky University.

Vocational Schools

Nearest State School

Location
Miles Distant
Curriculum

Central Kentucky State Vocational-
Technical School
Lexington
67
Agriculture
Equine Education
Business and Office
Clerical
Secretarial
Consumer and Home Economics
Commercial Foods
Consumer Education
Health and Personal Services Occupations
Cosmetology
Dental Assistant
Operating Room Technician
Orderly/Nurse Assistant
Practical Nursing
Marketing and Distributive Education
Industrial Education
Auto Body Repair
Auto Mechanics
Carpentry
Drafting
Electronics
Graphic Arts (Printing)
Industrial Electricity
Machine Shop
Masonry
Office Machine Repair
Sheet Metal
(includes Heating & Air Conditioning)
Welding
Learning Resource Center

Nearest Area Education Center

Location	Maysville Area Vocational Education Center
Curriculum	Maysville
	Agriculture
	Agribusiness
	Business and Office
	Clerical
	Secretarial
	Consumer and Home Economics
	Home Economics
	Industrial Education
	Auto Body Repair
	Auto Mechanics
	Carpentry/Building Trades
	Drafting
	Industrial Electricity
	Welding

Arrangements can be made to provide training in the specific production skills required by an industrial plant. Instruction may be conducted either in the vocational school or in the industrial plant, depending upon the desired arrangement and the availability of special equipment.

HEALTH

Local Medical Personnel

Physicians - 21
Dentists - 7

Hospitals

<u>General Hospital</u>	<u>Location</u>	<u>Beds</u>
Hayswood Hospital	Maysville	113 acute; 30 extended care

General hospital facilities - 3 operating rooms, recovery room, intensive care, 3 X-ray units, obstetrical unit, nursery, laboratory, pharmacy, physical therapy, respiratory therapy, nuclear medicine, cardiac care monitor, medical staff library

Medical staff - 21 physicians (8 family practitioners, 3 general practitioners, 1 anesthesiologist, 1 pediatrician, 1 neurologist, 1 ophthalmologist, 1 obstetrician/gynecologist, 1 internist, 3 general surgeons, 1 nuclear medicine specialist), 52 registered nurses, 27 licensed practical nurses, 2 physical therapists, 1 respiratory therapist

Other Medical Facilities

Mason County Comprehensive Care Center (Comprehend, Inc.)

Ambulance Service

Name - Maysville Fire Department
Staff - 6 emergency medical technicians
Service - 24-hour daily service
Equipment - 1 ambulance

Name - J. A. Bull & Son
Staff - 6 emergency medical technicians
Service - 24-hour service
Equipment - 1 ambulance, 1 back-up ambulance

Name - Brothers Funeral Home
Staff - 2 emergency medical technicians
Service - 24-hour service
Equipment - 1 ambulance

Name - Knox Funeral Home
Staff - 2 first aid directors, 1 driver
Service - 24-hour service
Equipment - 1 ambulance

Public Health

Facility - Mason County Health Department
Staff - Full time: 1 administrator, 4 nurses, 4 clerks,
1 sanitarian, 1 educator, 2 community
health workers
Part time: 1 dentist, 1 medical clinician, 1 nurse,
1 janitor



JOHN N. BROWNING MEDICAL BUILDING



MAYSVILLE PUBLIC LIBRARY

OTHER LOCAL FACILITIES

Communications

Telephone - South Central Bell Telephone Company (Maysville);
Kentucky Telephone Company, a subsidiary of
Continental Telephone Service (Mason County)
Services - Standard

Telegraph - Western Union
Services - Counter service, toll free number for telegrams,
mailgrams and international messages

Postal - U.S. Post Office
Class - First
Mail received - Twice daily
Mail dispatched - Twice daily

Newspapers -
Daily and circulation - The Ledger Independent, 8,350
Weekly and distribution - The Advertiser,* 20,800
Other papers
received from - Louisville and Lexington, Kentucky; Cincinnati, Ohio

Radio - WFTM-AM and FM
Stations received from - Lexington and Louisville, Kentucky;
Cincinnati and Dayton, Ohio

Television -
Cable service
Reception from - Lexington, Kentucky; Cincinnati and Dayton, Ohio;
Huntington, West Virginia
Kentucky Educational
Television - Lexington-Richmond transmitter - Channel 46;
Morehead transmitter - Channel 38

*Free weekly publication of The Ledger Independent.

Library Services

Public library - Mason County Library District

Size collection - 19,156 volumes

Circulation, 1978 - 118,000 items

Services - Bookmobile, records, film strips, microfilm reader-printer

College library - Maysville Community College Library (open to public)

Size collection - 21,839 volumes

Special collections - Kentucky history

Services - tape recorders, record players, 16 mm film projectors, microfilm reader-printer, microfilm, microfiche, learning lab (tutorial services, audiovisual and programmed instruction)

Other - Mason County Museum Genealogical Library

Size collection - 7,500

Special collections - Virginia, Pennsylvania and Maryland genealogy; local history of Mason and adjoining counties

Religious Institutions

Number of churches - 25

Denominations - Baptist

Catholic

Christian

Church of Christ

Church of God

Church of Jesus Christ
of Latter Day Saints

Episcopal

Holiness

Jehovah's Witnesses

Lutheran

Methodist

Nazarene

Pentecostal

Presbyterian

Nearest Synagogues - Portsmouth, Ohio, 54 miles east;

Cincinnati, Ohio, 64 miles west

Congregations - Portsmouth - Bene Abraham (reform);

Cincinnati - 16 synagogues (orthodox, reform,
traditional and conservative)

Financial Institutions

<u>Banks</u>	<u>Assets</u>	<u>Deposits</u>	<u>Statement Date</u>
The State National Bank	\$51,037,322.00	\$45,832,997.00	12/31/78
Bank of Maysville	45,489,278.89	37,141,055.25	12/31/78
The Security Bank and Trust Company	11,303,634.13	9,651,916.25	12/30/78
<u>Savings and Loan Associations</u>	<u>Assets</u>	<u>Savings Accounts</u>	<u>Statement Date</u>
First Federal Savings and Loan Association of Maysville	\$ 8,760,054.00	\$ 7,777,293.00	12/31/78

Hotels and Motels

Total number - 2*
Total units - 22

Clubs and Organizations

American Association of University Women	Garden Club
American Legion	Girl Scouts
American Legion Ladies Auxiliary	Homemakers Clubs
Beta Club	International Order of Odd Fellows
Beta Sigma Phi (Alpha Nu, Preceptor Nu, Xi Omicron Chapters)	Jaycees
Boy Scouts	Knights of Columbus
Brownies	Knights of Pythias
Business and Professional Women's Club	Lions
Campfire Girls	Mason County Recreational Foundation
Cub Scouts	Masons
Daughters of the American Revolution	Maysville-Mason County Chamber of Commerce
Eastern Star	Maysville Woman's Club
4-H	Moose Lodge
Fraternal Order of Eagles	Rotary
Fraternal Order of Police	Royal Arch
Future Farmers of America	Tom Browning's Boys Club
Future Homemakers of America	Valley Bow Hunters
Game and Fish Club	Veterans of Foreign Wars
	Welcome Wagon
	Younger Woman's Club

*In addition, there are six motels across the Ohio River from Maysville at Aberdeen, Ohio, which serve the Maysville area.



MASON COUNTY MUSEUM

RECREATION

Local

Five public parks are open to Maysville and Mason County residents and supervised recreational programs are available at three of the parks. Facilities at the parks include a swimming pool, a children's pool, five tennis courts, five basketball goals, a lodge, a 10-acre picnic area, a fishing lake, two softball diamonds, shelters, and concession stands. A 9-hole public golf course is located 6 miles south of Maysville. One movie theatre and two drive-in theatres are located in Maysville.

A country club with a swimming pool and a 9-hole golf course is located in Maysville.

Maysville has one of the most attractive and beautifully preserved downtowns in Kentucky. Fifteen French-style houses built in Maysville in the mid-1800's are known as "Little New Orleans." Walking tour maps are available at the Chamber of Commerce office. The Mason County Museum houses a substantial genealogical library and features an art gallery and local history exhibits. Mason County Court Day is held each October and features a parade, old fashioned dress contest and other special events. Concerts and lectures held at Maysville Community College are open to the public. The Maysville Little Theatre presents programs year round at the Maysville Opera Theatre.

Historic Old Washington is located 3 miles from Maysville in Mason County. Old Washington's historic district has been named to the National Register of Historic Places and guided tours are available on weekends and by special arrangement at other times. Special events such as Geranium Day and Frontier Christmas take place April through December.

A county fair and horse show is held annually at Germantown, 11 miles west of Maysville in Mason County.

Area (Within 70 miles)

The Rankin House in Ripley, Ohio, 10 miles northwest of Maysville, is the restored home of the Reverend John Rankin, an early Ohio abolitionist. The home was a station on the underground railroad and is reputedly the home in which Eliza, the character in Uncle Tom's Cabin, found refuge after crossing the ice on the Ohio River.

Shawnee State Park, located in Shawnee State Forest about 45 miles east near Portsmouth, Ohio, is a 1,165-acre park offering camping, picnicking, hiking trails, boating on an 80-acre lake, fishing, swimming, horseback riding, golf, a lodge, cabins, and a restaurant. Ruffed grouse, squirrel and deer hunting are allowed in season. Shawnee State Forest encompasses 60,000 acres including six lakes.

Adams Lake State Park near West Union, Ohio, about 20 miles north, is a 96-acre park offering picnicking, boating and fishing.

The Walcott covered bridge, built in 1824 and believed to be the oldest remaining in the state, is located west of Maysville in Bracken County near Wellsburg. A small park and picnic area are adjacent to the bridge. Other covered bridges in the area are: Sherburne Bridge, Hillsboro Bridge, Goddard Bridge, and Ringo's Mill Bridge in Fleming County; Johnson Creek Covered Bridge in Robertson County; and Lei's Creek Bridge and Cabin Creek Bridge in Mason County.

Blue Licks Battlefield State Park is located near Mt. Olivet, about 25 miles southwest of Maysville. The 100-acre park is on the site of what is known as "The Last Battle of the Revolution" and the last major confrontation between the Indians and the pioneers. A museum features Indian and pioneer artifacts, and audiovisual program and prehistoric bones from animals trapped at Blue Licks. Facilities include ten primitive campsites, a gift shop, picnic shelters and grills, playground, snack bar, and an Olympic-size swimming pool. Fishing is available at the Licking River which runs through the park.

The Fox Valley Recreation Area, about 25 miles south of Maysville, is a 225-acre park with a 75-acre fishing lake. The area has trailer campsites, primitive camping, a shelter house, boat dock, picnic area, and nature trails.

Kincaid Lake State Park near Falmouth, about 45 miles west of Maysville, offers a 250-acre lake, a bathhouse, swimming, boating, hiking, picnicking, an amphitheatre, badminton, shuffleboard, miniature golf, tennis, and organized recreational programs in the summer months.

Maysville is about 45 miles northwest of the northern portion of the Daniel Boone National Forest. Several recreation areas are located within its 650,000 acres.

Cave Run Lake, an 8,270-acre lake near Morehead, about 50 miles southeast, was built by the Corps of Engineers and extends into four counties. Camping facilities are available.

Carter Caves State Resort Park is about 60 miles southeast of Maysville near Olive Hill. Among 20 caves in the park are Laurel Cave, Saltpetre Cave, X Cave, Cascade Cavern and Bat Cave (home of the Social Bat, included on the U.S. list of vanishing species). The park contains a lodge, dining room, coffee shop, gift shop, cottages, 86 campsites with a service building and grocery, swimming pool, 9-hole golf course, miniature golf course, 37-acre lake, playground, tennis courts and 300-seat convention center. Activities include fishing, swimming, hiking, canoeing and guided tours of Cascade Cavern. Hunting in season is available in the 800-acre Tygart's State Forest on the western boundary of the park.

Lexington, 67 miles southwest of Maysville, offers a variety of sporting, entertainment and cultural events. The colleges and universities in Lexington host concerts, lectures, exhibits, and sporting events. Thoroughbred and harness racing are available as well as tours of famous horse farms, museums, and historic homes.

Cincinnati, Ohio, 64 miles northwest, also offers a wide variety of sporting, entertainment and cultural events. The Cincinnati Zoo and Kings Island, the largest family entertainment center in the entire midwest, are popular attractions for the entire family. Sports attractions include Cincinnati Reds baseball, Bengals professional football, and Cincinnati Stingers professional hockey games. Cultural attractions include performances by the Cincinnati Symphony Orchestra, various legitimate theatres, opera, libraries, art galleries, and museums.

COMMUNITY IMPROVEMENTS

Industrial:

The Maysville-Mason County Port Authority plans to develop a public port which will serve as a general cargo facility.

Construction is under way on Spurlock Unit #2, an electric generating station of East Kentucky Power Cooperative. The \$339 million facility is expected to be completed in January of 1982.

Commercial:

Plans are under way for construction of an \$800,000 riverfront hotel adjacent to the municipal parking lot. A private developer will build the hotel and the City of Maysville will construct a two-story parking lot over the existing municipal parking lot.

New businesses include three restaurants, three clothing stores, a health food store, two opticians' shops, two florists, a stockbroker, and a drive-in branch of the State National Bank.

Construction of two shopping centers is planned.

Municipal:

A new city building was completed in November 1978. The new building houses administrative, engineering, finance, community development, and utility offices. The old city hall now houses public safety offices and facilities.

A mall was recently completed on Market Street. The town's 70-year-old fountain has been restored and is located on the mall.

Utilities:

Plans are under way for the Maysville Utility Commission to begin providing sewerage service to the community of Washington.

Addition of a 150,000-gallon elevated storage tank and several 10-inch feeder mains is planned for the municipal water system.

Transportation:

A 2.2 mile section of Kentucky 11 between Lewisburg and Maysville is being reconstructed.

A 5.7 mile section of Kentucky 10 will be rerouted from 3.4 miles east of the Bracken County line to U.S. 62/68 1.2 miles northeast of Washington.

The Fleming-Mason Airport located in Mason County is now open 24 hours daily. Flight instruction is now available and a mechanic is on duty at all times.

Education:

A new wing at Jones Elementary School, part of the Maysville Independent School District, was completed in 1978. It houses a Title I Reading Program, band classes, and kindergarten.

Construction will begin in the summer of 1979 on a new elementary school building for the Mason County School System.

Construction began in the spring of 1979 on a classroom building at Maysville Community College. The classroom building will house nursing, retail management, and electronics technology classes.