

1989

# Industrial Resources: Montgomery County - Mount Sterling

Kentucky Library Research Collections  
Western Kentucky University, [spcol@wku.edu](mailto:spcol@wku.edu)

Follow this and additional works at: [https://digitalcommons.wku.edu/montgomery\\_cty](https://digitalcommons.wku.edu/montgomery_cty)

 Part of the [Business Administration, Management, and Operations Commons](#), [Growth and Development Commons](#), and the [Infrastructure Commons](#)

---

## Recommended Citation

Kentucky Library Research Collections, "Industrial Resources: Montgomery County - Mount Sterling" (1989). *Montgomery County*. Paper 6.  
[https://digitalcommons.wku.edu/montgomery\\_cty/6](https://digitalcommons.wku.edu/montgomery_cty/6)

This Report is brought to you for free and open access by TopSCHOLAR®. It has been accepted for inclusion in Montgomery County by an authorized administrator of TopSCHOLAR®. For more information, please contact [topscholar@wku.edu](mailto:topscholar@wku.edu).

IR  
613

Montgomery

# *Resources for Economic Development*

## Mt. Sterling



**KENTUCKY**  
*Open for Business*

---

RESOURCES FOR ECONOMIC DEVELOPMENT

MT. STERLING, KENTUCKY

Prepared by  
The Kentucky Cabinet for Economic Development  
Division of Research and Planning  
in cooperation with  
The Mt. Sterling & Montgomery County Industrial Authority  
and  
The Mt. Sterling & Montgomery County Chamber of Commerce

1989

Division Director - Pamela K. Riley; program coordinator - Keith Roberts; research - Jane E. Sullivan; clerical - Bobbi Graves; graphics - Robert Owens, Pat Coleman; cartography - Edwin Scott, Dave Clark. Cost of printing paid from state funds.

## TABLE OF CONTENTS

<u>Chapter</u>	<u>Page</u>
INDUSTRIAL SITES . . . . .	i
MT. STERLING, KENTUCKY - A RESOURCE PROFILE . . . . .	1
THE LABOR MARKET STATISTICS . . . . .	2
Labor Market Area Map . . . . .	2
Population . . . . .	3
Population Projections . . . . .	3
Estimated Labor Supply . . . . .	3
Labor Force Characteristics of Residents, 1988 . . . . .	4
Selected Components of Nonagricultural Employment, by Place of Work, 1988 . . . . .	5
Per Capita Personal Income . . . . .	6
Average Placement Wages . . . . .	7
Average Weekly Wages of Workers Covered by Unemployment Insurance F.Y. 1986-87 - Bar Chart . . . . .	8
Average Weekly Wages by Industry, by Place of Work, 1987 . . . . .	9
EXISTING INDUSTRY . . . . .	10
Mt. Sterling Manufacturing Firms, Their Products and Employment . . . . .	10
Labor Organizations in Manufacturing Firms . . . . .	11
Selected Industrial Services . . . . .	11
TRANSPORTATION . . . . .	12
Highways . . . . .	12
Truck Service . . . . .	12
Selected Market Location Map . . . . .	13
Rail . . . . .	14
Air . . . . .	14
UTILITIES . . . . .	15
Electricity . . . . .	15
Natural Gas . . . . .	15
Public Water Supply . . . . .	16
Sewerage . . . . .	16
CLIMATE . . . . .	17

<u>Chapter</u>	<u>Page</u>
LOCAL GOVERNMENT . . . . .	18
Structure . . . . .	18
Planning and Zoning . . . . .	18
Local Fees and Licenses . . . . .	18
State and Local Property Taxes . . . . .	19
Combined State and Local Rates Per \$100 Valuation, 1988 . . . . .	19
EDUCATION . . . . .	20
Public Schools . . . . .	20
Nonpublic Schools . . . . .	20
Area Colleges and Universities . . . . .	20
Vocational Training . . . . .	21
OTHER LOCAL FACILITIES . . . . .	22
Local Medical Personnel . . . . .	22
Hospitals . . . . .	22
Other Medical Facilities and Services . . . . .	22
Banks and Savings & Loan Associations . . . . .	22
Newspapers . . . . .	22
Telephone Service . . . . .	22
RECREATION . . . . .	23
COMMUNITY IMPROVEMENTS . . . . .	24

# GENERAL HIGHWAY MAP MONTGOMERY COUNTY KENTUCKY

PREPARED BY THE  
KENTUCKY TRANSPORTATION CABINET  
DEPARTMENT OF HIGHWAYS  
DIVISION OF PLANNING  
IN COOPERATION WITH THE  
U.S. DEPARTMENT OF TRANSPORTATION  
FEDERAL HIGHWAY ADMINISTRATION



## MT. STERLING, KENTUCKY - A RESOURCE PROFILE

Mt. Sterling, the county seat of Montgomery County, is located in the Outer Blue Grass Region of central Kentucky. Mt. Sterling lies 36 miles east of Lexington, Kentucky; 108 miles east of Louisville, Kentucky; 114 miles southeast of Cincinnati, Ohio; and 199 miles north of Knoxville, Tennessee. The 1986 estimated population of the city of Mt. Sterling was 7,020 persons. Montgomery County, with a land area of 199 square miles, had a 1987 estimated population of 20,300.

**The Economic Framework** - The total number of Montgomery County residents employed in 1988 averaged 7,650. Manufacturing firms in the county reported 2,055 employees; wholesale and retail trade provided 2,128 jobs; 830 people were employed in service occupations; state and local government accounted for 755 employees; and contract construction firms provided 285 jobs.

**Labor Supply** - There is a current estimated labor supply of 12,624 persons available for industrial jobs in the labor market area. In addition, from 1989 through 1993, 8,476 young persons in the area will become 18 years of age and potentially available for industrial jobs.

**Transportation** - The city of Mt. Sterling is served by the following major highways: I-64, U.S. 60, U.S. 460, and Kentucky 11. The Mountain Parkway can be accessed near Winchester, 14 miles southwest of Mt. Sterling, and I-75 can be accessed near Lexington, 30 miles west of Mt. Sterling. Twenty-eight trucking firms provide interstate and/or intrastate trucking service to the Mt. Sterling area. Rail service is provided to Mt. Sterling by CSX Transportation. The Mt. Sterling-Montgomery County Airport has a 4,000-foot paved runway. The nearest scheduled commercial air service is available at Lexington's Bluegrass Airport, 41 miles west of Mt. Sterling.

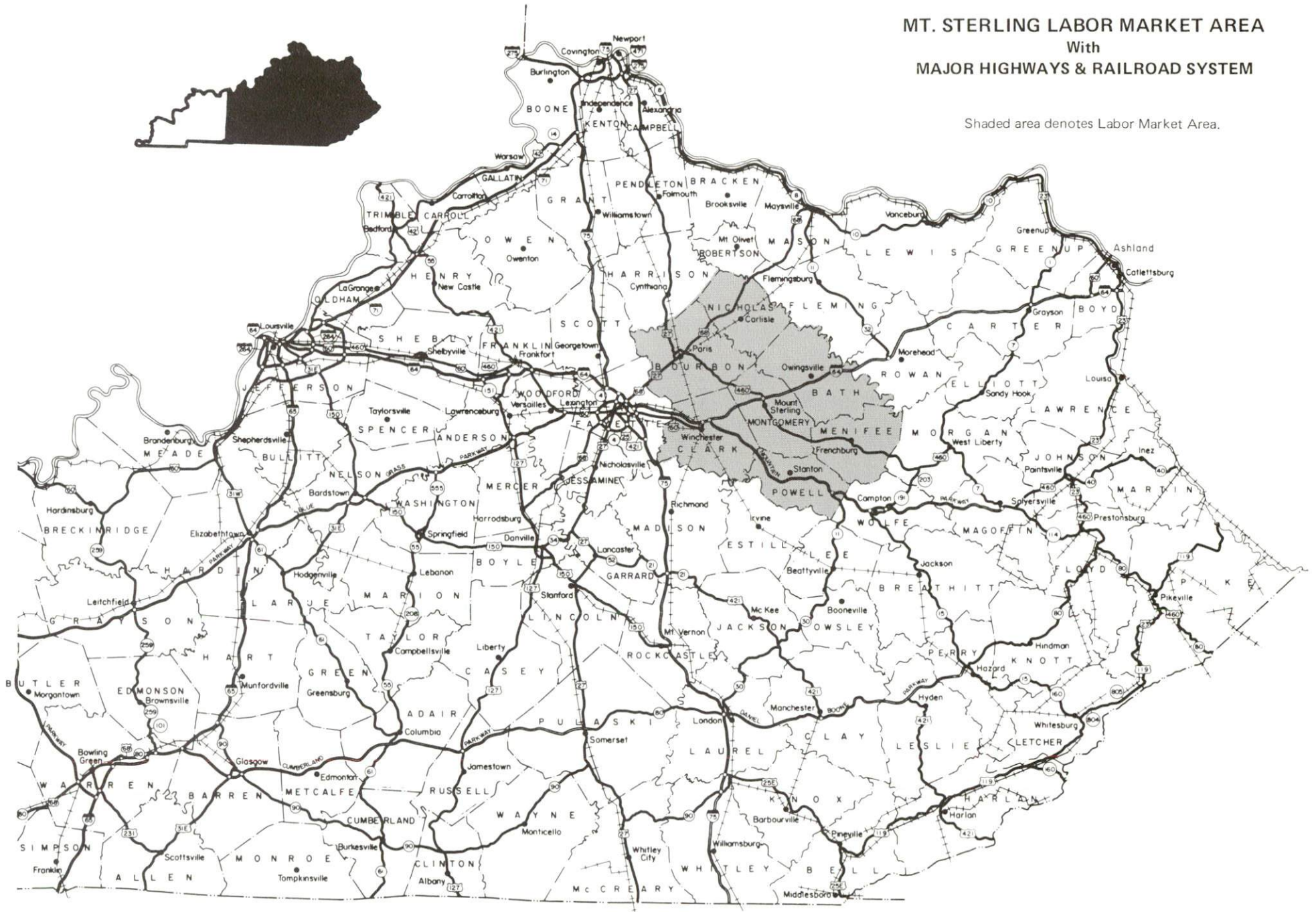
**Power and Fuel** - Electric power is provided to Mt. Sterling and parts of Montgomery County by Kentucky Utilities Company, an electric generation and transmission company. Montgomery County is also served by Clark Rural Electric Cooperative Corporation. Natural gas service is provided by Columbia Gas of Kentucky.

**Education** - Primary and secondary education is provided to Mt. Sterling by the Montgomery County School System. Four state universities and seven other colleges and universities are located within 60 miles of Mt. Sterling. Vocational training is provided by the Montgomery County Area Vocational Education Center in Mt. Sterling, and the Rowan State Vocational-Technical School in Morehead, 31 miles east of Mt. Sterling.



# MT. STERLING LABOR MARKET AREA With MAJOR HIGHWAYS & RAILROAD SYSTEM

Shaded area denotes Labor Market Area.



## LABOR MARKET STATISTICS

The Mt. Sterling Labor Market Area includes Montgomery County and the adjoining Kentucky counties of Bath, Bourbon, Clark, Menifee, Nicholas, and Powell.

	POPULATION		
	<u>1987*</u>	<u>1980</u>	<u>1970</u>
Labor Market Area	103,400	101,173	85,427
Mt. Sterling	7,020	5,820	5,083
Montgomery County	20,300	20,046	15,364

\* Population estimates. City estimates are for 1986.

Sources: U.S. Department of Commerce, Bureau of the Census, October 1988; University of Louisville, Urban Studies Center, Population Unit.

	POPULATION PROJECTIONS			
	<u>1990</u>	<u>1995</u>	<u>2000</u>	<u>2010</u>
Labor Market Area	106,526	109,782	112,488	116,052
Montgomery County	21,061	21,682	22,192	22,736

Source: University of Louisville, Urban Studies Center, State Data Center.

	ESTIMATED LABOR SUPPLY				
	Current				Future
	<u>Total</u>	<u>Unemployed</u>	<u>Employed Part-Time</u>	<u>Not in Labor Force</u>	<u>Becoming 18 years of age 1989 thru 1993</u>
Labor Market Area*	12,624	5,249	4,631	2,744	8,476
Montgomery County	3,485	1,305	1,017	1,163	1,812

\* Additional workers may be drawn from other nearby counties.

Note: Unemployed - persons unemployed and actively seeking work; Employed Part-Time - persons employed but working only 14 to 26 weeks per year; Not in Labor Force - represents the number of persons who would enter the labor force if suitable employment were available (based on the assumption that persons in Kentucky would like to participate in the labor force in the same proportion that they do nationally).

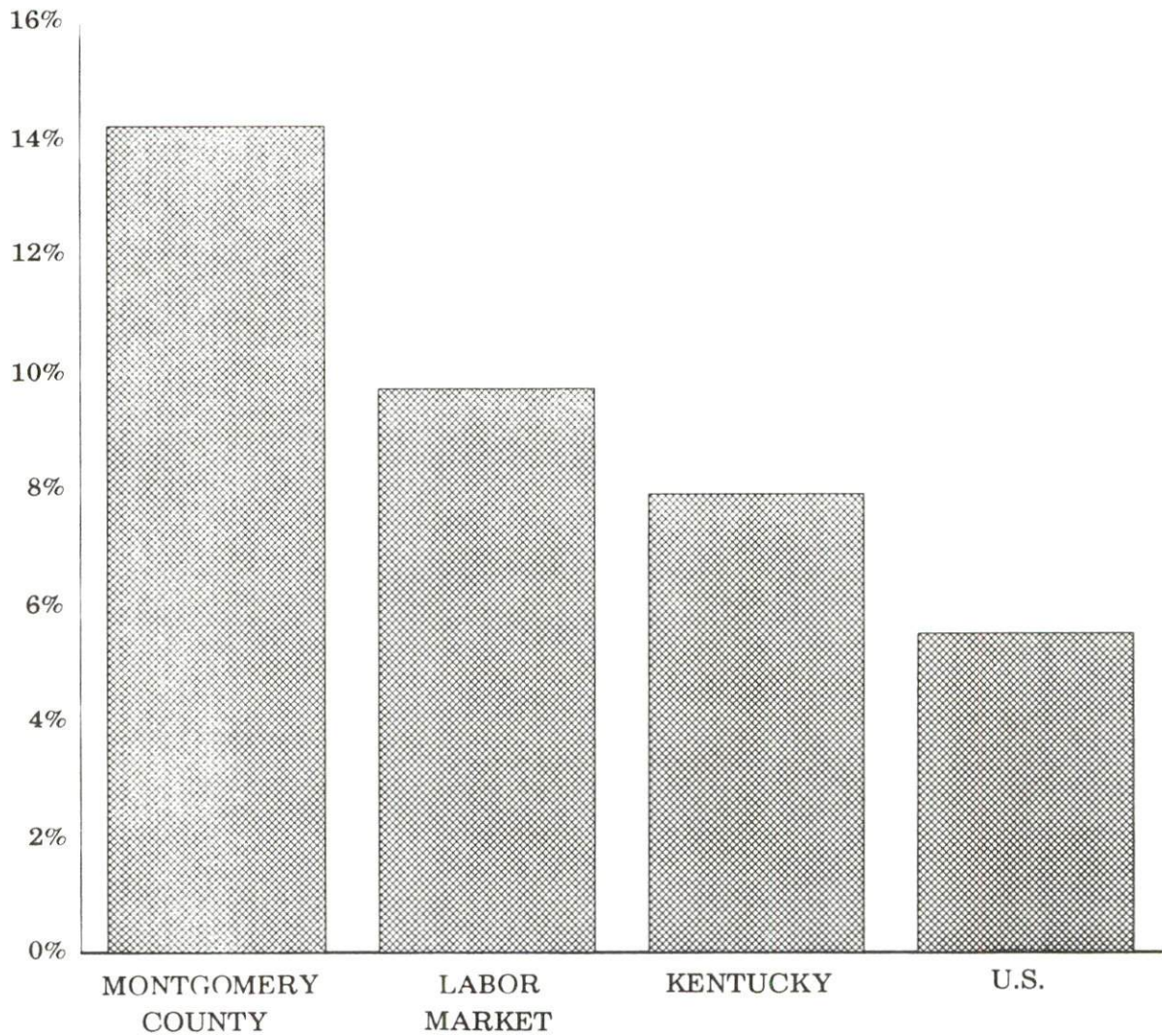
Sources: Kentucky Cabinet for Human Resources, Kentucky Labor Supply Estimates by County, 1987. Kentucky Cabinet for Economic Development, Future Labor Supply Becoming 18 Years of Age, 1989 thru 1993.

LABOR FORCE CHARACTERISTICS OF RESIDENTS, 1988

	Montgomery County	Labor Market Area
Civilian Labor Force	8,921	49,972
Employment	7,650	45,145
Unemployment	1,271	4,827
Rate of Unemployment (%)	14.2	9.7

Source: Kentucky Cabinet for Human Resources, Kentucky Labor Force Estimates, Annual Averages, 1988.

UNEMPLOYMENT RATES  
1988

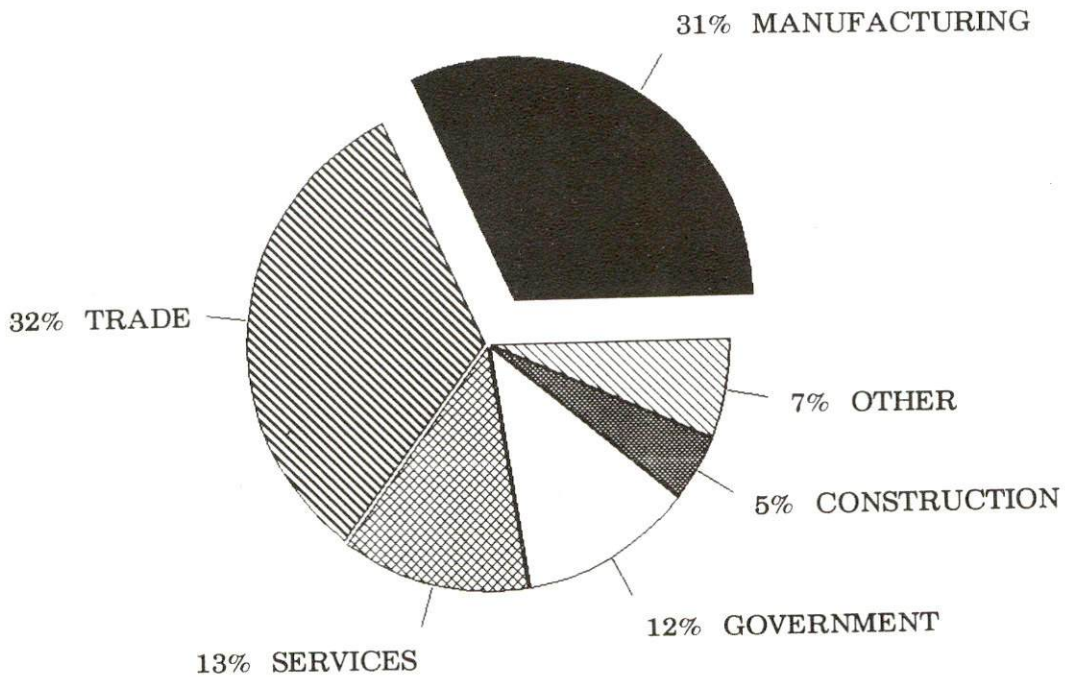


SELECTED COMPONENTS OF NONAGRICULTURAL EMPLOYMENT  
BY PLACE OF WORK, 1988

	Montgomery County	Labor Market Area
All Industries (total)	6,481	26,862
Manufacturing	2,055	8,169
Wholesale & Retail Trade	2,128	6,875
Services	830	3,012
State/Local Government	755	3,781
Contract Construction	285	1,270

Note: Excludes domestic workers, railway workers, certain nonprofit corporations, majority of federal government workers, and self-employed workers.  
 Source: Kentucky Cabinet for Human Resources, Average Monthly Workers Covered by Kentucky Unemployment Insurance Law, 1988.

MONTGOMERY COUNTY

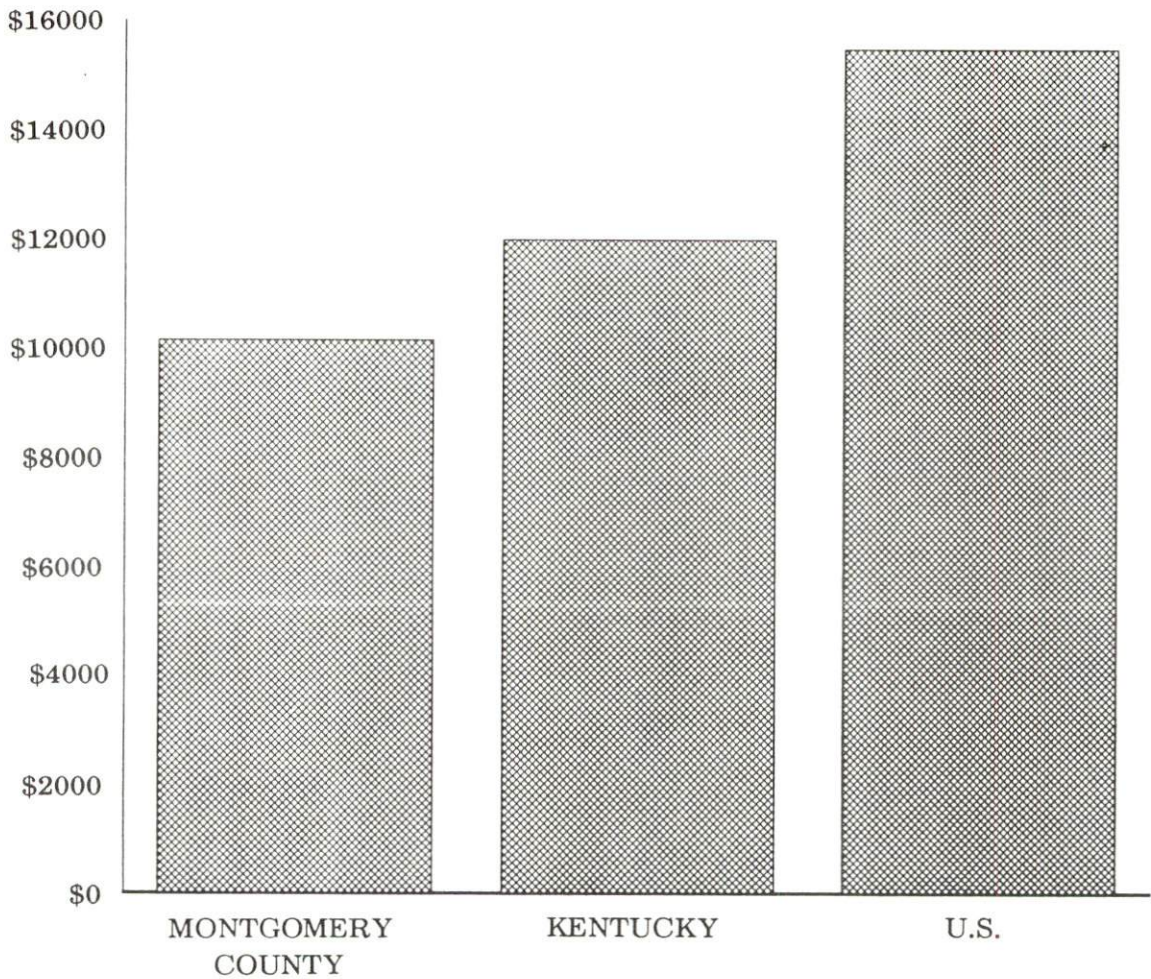


PER CAPITA PERSONAL INCOME

Area	1983	1987	Percent Change
Montgomery County	\$8,164	\$10,153	24.5
Labor Market Area Range	\$4,763 - 10,588	\$6,123 - 12,733	-
Kentucky	\$9,513	\$11,997	26.1
U.S.	\$12,098	\$15,484	28.0

Sources: U.S. Bureau of Economic Analysis, Kentucky Economic Information System, August 1988 and April 1989.

PER CAPITA PERSONAL INCOME  
1987



## AVERAGE PLACEMENT WAGES

---

Montgomery County is served by the Morehead local office of the Kentucky Department for Employment Services. The focus of the following data is on job placements made by the Morehead local office and may therefore be used as an indicator of the wages which employers in the area pay new employees. During the twelve months which ended on June 30, 1988, the local employment office filled 1,865 job openings in various occupational categories. The average hourly wage for selected occupational categories were:

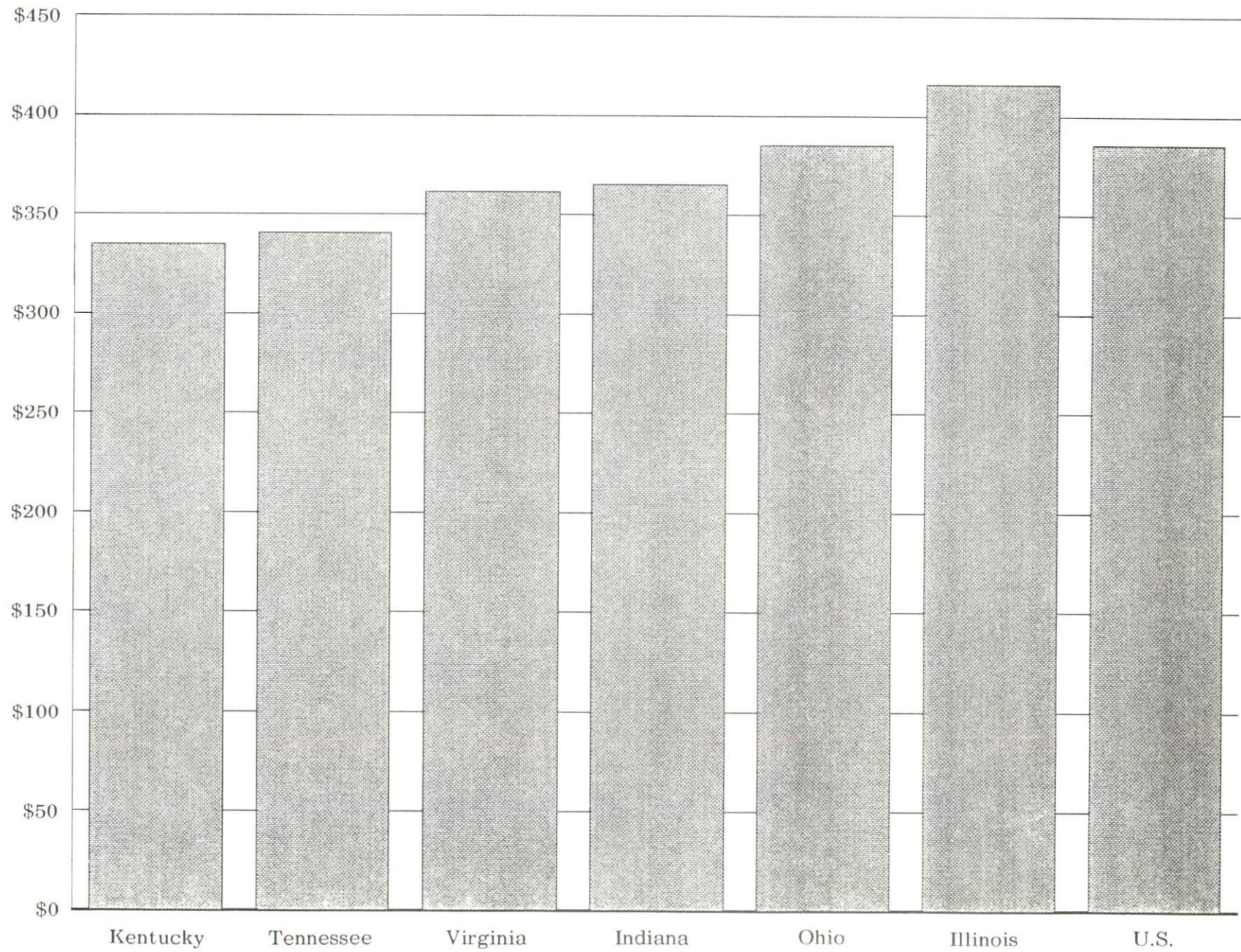
<u>OCCUPATIONAL CATEGORY</u>	<u>NUMBER OF PLACEMENTS</u>	<u>AVERAGE WAGE(\$)</u>
All Occupations	1,865	3.78
Clerical	240	3.46
Sales	327	3.68
Services (excluding domestic)	599	3.33
Agricultural, Fishery, Forestry, etc.	10	3.61
Processing	7	5.26
Machine Trades	59	3.53
Bench Work	298	3.49
Structural	145	7.00
Motor Freight/ Transportation	27	3.38
Packaging and Materials Handling	119	3.63
Other	1	3.35

The Morehead local office also serves Bath, Menifee, Morgan, and Rowan Counties. The above occupational categories are taken from the Dictionary of Occupational Titles published by the U.S. Department of Labor.

---

**Source:** Kentucky Cabinet for Human Resources, Department for Employment Services.

AVERAGE WEEKLY WAGES OF WORKERS COVERED BY  
UNEMPLOYMENT INSURANCE F.Y. 1986-87



AVERAGE WEEKLY WAGES BY INDUSTRY  
BY PLACE OF WORK, 1987\*

	<u>Montgomery County</u>	<u>Kentucky (State- Wide)</u>	<u>Tennessee</u>	<u>Virginia</u>
All Industries	\$283.26	\$343.02	\$350.00	\$372.00
Mining & Quarrying	341.40	591.43	473.00	584.00
Contract Construction	377.21	366.14	375.00	392.00
Manufacturing	357.29	453.50	400.00	431.00
Transportation, Communications & Public Utilities	368.45	451.87	474.00	530.00
Wholesale & Retail Trade	205.30	232.55	N/A	N/A
Finance, Insurance & Real Estate	294.74	380.77	433.00	437.00
Services	218.44	286.94	331.00	369.00
State/Local Government	319.35	345.02	N/A	N/A
	<u>Indiana</u>	<u>Ohio</u>	<u>Illinois</u>	<u>U. S.</u>
All Industries	\$379.00	\$394.00	\$427.00	\$397.00
Mining & Quarrying	624.00	582.00	640.00	634.00
Contract Construction	434.00	444.00	555.00	445.00
Manufacturing	513.00	543.00	523.00	494.00
Transportation, Communications & Public Utilities	491.00	N/A	559.00	527.00
Wholesale & Retail Trade	N/A	N/A	N/A	N/A
Finance, Insurance & Real Estate	391.00	418.00	538.00	500.00
Services	304.00	332.00	379.00	364.00
State/Local Government	N/A	N/A	N/A	N/A

\* Wages for U.S. and surrounding states rounded to nearest dollar.

N/A Not available.

Note: The average weekly wage for each category includes the salaries and wages of all persons working for that type business. For example, the manufacturing category includes both production workers and administrative personnel. Excludes domestic workers, railway workers, certain nonprofit corporations, majority of federal government workers, and self-employed workers.

Source: Kentucky Cabinet for Human Resources, Average Weekly Wages of Workers Covered by Kentucky Unemployment Insurance Law, 1987. U.S. Department of Labor, Employment and Wages, Annual Averages, 1987.



## EXISTING INDUSTRY

### MT. STERLING MANUFACTURING FIRMS, THEIR PRODUCTS AND EMPLOYMENT

Firm (Establishment date)	Product	1988 Average Employment
Atlas Concrete Products (1946)	Concrete tanks, ready- mix concrete	10
Cowden-Mt. Sterling Company (1946)	Jeans	175
Eastern Electroplating (1987)	Electroplating	10
Elvridges Barbeque (1950)	Hot dog sauce, pork & beef barbeque	4
Hasco Newspapers, Inc. (1961)	Web offset printing, newspaper	17
Highway Drainage Pipe, Inc. (1949)	Concrete pipe, manholes, gabion & channel lining mattresses	15
Home Lumber & Supply Company of Mt. Sterling (1888)	Millwork, trusses, surveyor stakes	16
Ruth Hunt Candy (1923)	Candy	6
Jockey International, Inc. (1955)	Men's underwear	420
Kitchen Aid, Inc., Division of Whirlpool (1965)	Home dishwashers	452
Rex Moore Harness Shop (1949)	Harness	1
Mt. Sterling Industries, Inc. (1966)	Electro-mechanical assemblies, machine shop, tools, dies, jigs & fixtures	27
Mountain Town Machining (1979)	Machine shop, special machines, tooling	18
Plasti-Drum Corporation (1985)	Plastic drums, covers	33
Russell Engineering Company (1979)	Automated machines, tooling, dies, fixtures	15
A. O. Smith Corporation Electrical Products Company (1964)	Hermetic motors	800
Trojan Manufacturing Company (1960)	Electro-mechanical sub- assemblies, fluorescent lamps, coiled wire products	156

Sources: Kentucky Department for Economic Development, 1989 Kentucky Directory of Manufacturers; Division of Research and Planning.

## LABOR ORGANIZATIONS IN MANUFACTURING FIRMS

<u>Union</u>	<u>Representing workers at:</u>
International Union, United Automobile, Aerospace and Agricultural Implement Workers of America (AFL-CIO)	Kitchen Aid, Division of Whirl- pool Corporation
International Brotherhood of Electrical Workers (AFL-CIO)	A.O. Smith Corporation Electrical Products Company
International Brotherhood of Teamsters, Chauffeurs, Ware- housemen and Helpers of America (AFL-CIO)	Cowden-Mt. Sterling Company

## SELECTED INDUSTRIAL SERVICES

<u>Types of Service</u>	<u>Location</u>	<u>Mileage from Mt. Sterling</u>
Custom Data Processing	Lexington	36
Custom Plastics Producers	Lexington	36
Electric Motor Repair	Morehead Lexington	31 36
Grinding, Precision & Tool	Winchester	16
Heat Treating Facilities	Lexington Richmond	36 37
Industrial Equipment & Supplies	Mt. Sterling	-
Industrial Gases	Lexington	36
Industrial Waste Removal	Lexington Richmond	36 37
Machine Shops, Tool & Die	Mt. Sterling	-
Metal Castings	Cynthiana	41
Metal Finishers	Lexington Richmond	36 37
Metal Service Centers	Morehead Lexington	31 36
Millwrights	Stanton	20
Public Warehouse Facilities	Paris	26

Sources: Kentucky Department of Economic Development, Kentucky Directory of Selected Industrial Services, 1987; Division of Research and Planning.

## TRANSPORTATION

### Highways

Major highways serving Mt. Sterling are Interstate 64 (with an interchange two miles north of central Mt. Sterling), U.S. Highways 60 and 460, and Kentucky Route 11. All are "AAA"-rated trucking highways (80,000-pound gross load limit). Access to Interstate 75 is available 30 miles west of Mt. Sterling via Interstate 64. An interchange of the Mountain Parkway, a multi-lane toll road providing access to eastern Kentucky, is located 14 miles west of the city. Kentucky Route 686, the Mt. Sterling Bypass, encircles the city and provides access to surrounding areas.

#### HIGHWAY MILES FROM MT. STERLING, KENTUCKY, TO SELECTED MARKET CENTERS

City	Highway Miles	City	Highway Miles
Atlanta, GA	400	Los Angeles, CA	2,195
Baltimore MD	496	Louisville, KY	109
Birmingham, AL	432	Nashville, TN	246
Chicago, IL	379	New Orleans, LA	766
Cincinnati, OH	114	New York, NY	685
Cleveland, OH	354	Pittsburgh, PA	325
Detroit, MI	372	St. Louis, MO	367
Knoxville, TN	207		

Note: Mileage computations are via the best interstate or primary highways, not necessarily the most direct route of travel.

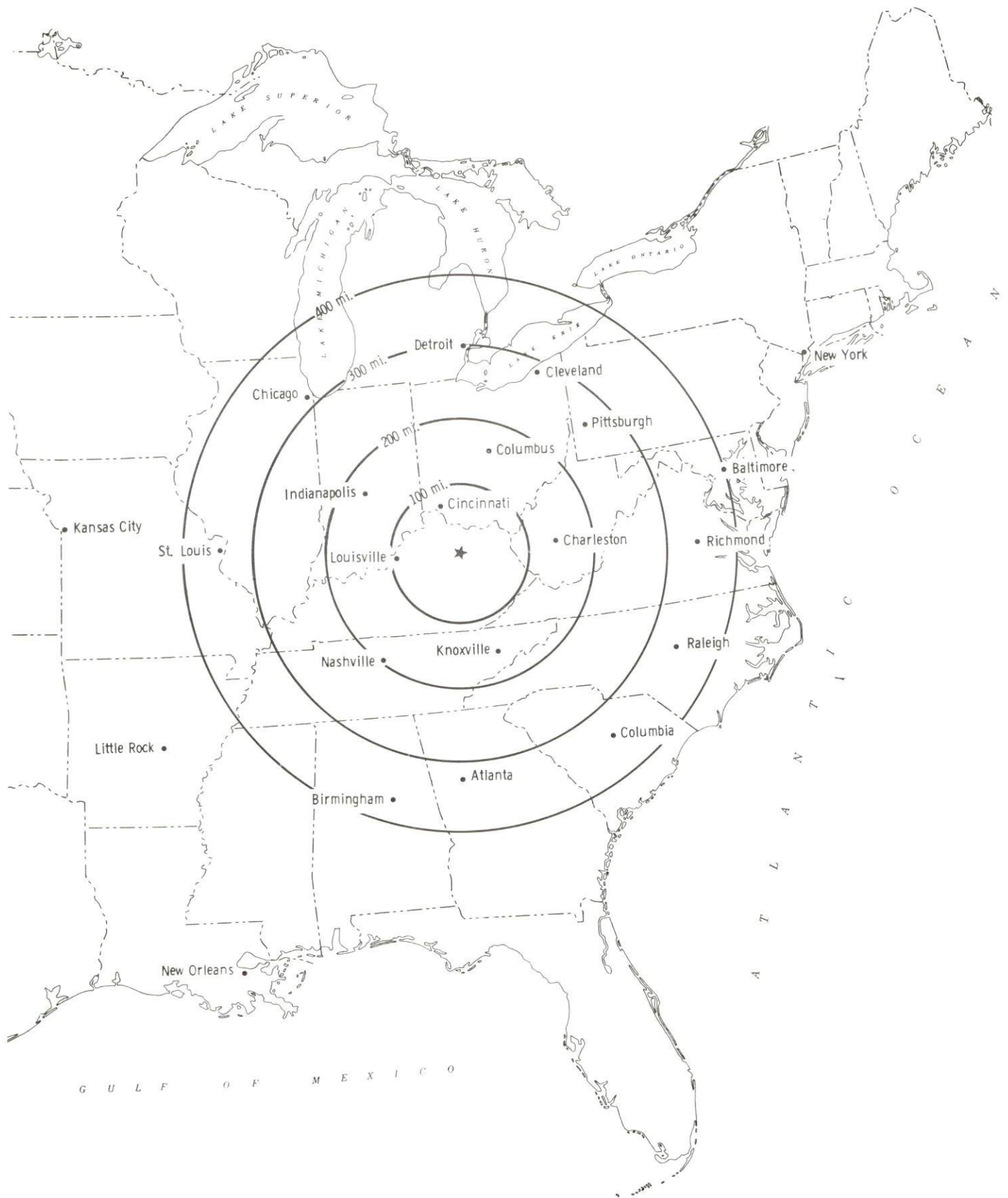
Sources: Rand McNally Deluxe Motor Carriers' Road Atlas, 1989. Official Kentucky Mileage Map, 1980.

### Truck Service

Twenty-eight trucking firms provide interstate and/or intrastate service to Lebanon.

Source: American Motor Carrier Directory, Spring 1989.

# Selected Market Centers



## Rail

CSX Transportation provides main line rail service to Mt. Sterling. The nearest piggyback service is provided by Southern Railway System at Georgetown, 46 miles northwest of Mt. Sterling.

For details on routing, schedules, rates, and services contact:

Manager  
Industrial Development  
CSX Transportation  
908 West Broadway  
P. O. Box 2157  
Louisville, Kentucky 40201  
(502) 587-7746

## Air

### Local

Location: Mt. Sterling-Montgomery County Airport  
Runways: 2 miles west of Mt. Sterling  
Length: 1 paved  
4,000 feet  
Traffic  
Control: Unicom, wind sock, tetrahedron  
Lighting: VASI, landing  
Services: Major & minor repairs, jet-A and 100LL fuel, charter,  
flight instruction, tie-downs, hangar, car rental  
Air Freight  
Service: Chartered air freight services must be arranged

Construction of an additional parallel taxiway is currently under way at the Montgomery County Airport. The airport plans to increase hangar space and available parking in the near future.

### Nearest Scheduled Commercial Airline Service

Location: Bluegrass Airport  
4 miles west of Lexington, Kentucky;  
41 miles west of Mt. Sterling  
Air Service: Delta, USAir, TWA, United Express, JetStream, Air  
Kentucky, American Eagle, ComAir  
Daily Arrivals  
& Departures: 116

## UTILITIES

### Electricity

Company serving Mt. Sterling and parts of Montgomery County - Kentucky  
Utilities Company  
Source of power - Kentucky Utilities Company  
For industrial rates contact:

Industrial Development Department  
Kentucky Utilities Company  
One Quality Street  
Lexington, Kentucky 40507  
(606) 255-1461

Company serving parts of Montgomery County - Clark Rural Electric  
Cooperative Corporation  
Source of power - East Kentucky Power Cooperative  
For industrial rates contact:

Clark RECC  
P. O. Box 748  
Winchester, Kentucky 40391  
(606) 744-4251

and/or

Industrial Development Division  
East Kentucky Power Cooperative  
P. O. Box 707  
Winchester, Kentucky 40391  
(606) 744-4812

### Natural Gas

Company serving Mt. Sterling - Columbia Gas of Kentucky  
Source of supply - Columbia Gas Transmission Corporation  
For rates and supplies contact:

Marketing Department  
Columbia Gas of Kentucky, Inc.  
166 Walnut Street  
Lexington, Kentucky 40584  
(606) 255-3612

## Public Water Supply

Company serving Mt. Sterling - Mt. Sterling Water and Sewer System  
300 East Main Street  
P. O. Box 392  
Mt. Sterling, Kentucky 40353-0392  
(606) 498-0166

Source - Slate Creek Impoundment and Greenbriar Reservoir

Treatment plant capacity - 3,000,000 gallons per day

Average daily consumption - 1,950,000 gallons

Peak daily consumption - 2.4 to 2.5 million gallons

Storage capacity - 1,500,000 gallons

Water pressure - 70 psi to 95 psi

In 1988, the Mt. Sterling Water and Sewer System completed a \$1.3 million project which increased raw water storage from 220 to 565 million gallons. As a result of a study done in 1985, \$10 million worth of projects that will update the water plant have been planned. In addition, a one million gallon elevated tank and main with 2,700 feet of connecting line will be constructed by 1991. The estimated cost of this project is \$1.6 million.

## Sewerage

Company serving Mt. Sterling - Mt. Sterling Water and Sewer System  
300 East Main Street  
P. O. Box 392  
Mt. Sterling, Kentucky 40353-0392  
(606) 498-0166

Design capacity - 3,000,000 gallons per day

Average daily flow - 1,200,000 gallons

Type of treatment - Tertiary

Treated effluent discharged into - Hinkston Creek

## CLIMATE

### Montgomery County

#### Temperature

Normal (30-year record)	54.90 degrees
Average annual 1987	56.80 degrees
Record highest, August 1983 (43-year record)	103.00 degrees
Record lowest, January 1963 (43-year record)	-21.00 degrees
Normal heating degree days (30-year record) (Heating degree day totals are the sums of negative departures of average daily temperatures from 65 degrees F.)	4,814

#### Precipitation

Normal (30-year record)	45.68 inches
Mean annual snowfall (43-year record)	16.40 inches
Total precipitation 1987	36.68 inches
Mean number days precipitation (.01 inch or more) (43-year record)	130.10
Mean number days thunderstorms (43-year record)	45.40

#### Prevailing winds (through 1963)

South

#### Relative Humidity (24-year record)

1 a.m.	77 percent
7 a.m.	81 percent
1 p.m.	60 percent
7 p.m.	64 percent

Source: U.S. Department of Commerce, Environmental Science Services Administration, Climatological Data, 1987. Station of record: Lexington, Kentucky.



## LOCAL GOVERNMENT

### Structure

The City of Mt. Sterling is governed by a mayor and eight council members. The mayor serves a four-year term and the council members serve two-year terms. Montgomery County is served by a county judge/executive and three commissioners, each of which is elected to four-year terms.

### Planning and Zoning

City agency - Mt. Sterling Planning and Zoning Commission

Zoning enforced - Yes

Subdivision regulations enforced - Within the city and five miles beyond corporate limits

Local codes enforced - Building and housing

Mandatory state codes enforced - Kentucky Plumbing code, National Electric Code, Kentucky Boiler Regulations and Standards, Kentucky Building Code (modeled after BOCA code)

### Local Fees and Licenses

The City of Mt. Sterling levies a business license fee ranging from \$25 to \$150, depending on the number of employees. The city also levies a 1 percent occupational license tax on wages, salaries, and commissions of individuals employed in the city and on net profits of businesses operating in the city. An insurance premium tax of 10 percent is levied on all insurance policies issued within the city of Mt. Sterling. Montgomery County levies a 1% occupational license tax on wages, salaries, and commissions of individuals and on net profits of businesses in the county.

## State and Local Property Taxes

All property in Kentucky, except items exempted by the state constitution, is taxed by the state. Property which also may be taxed by local jurisdictions includes land and buildings, finished goods inventories, automobiles, trucks, office furniture and office equipment. Local taxing jurisdictions in Kentucky include counties, cities, and school districts.

All property in Kentucky is assessed at 100 percent of fair cash value.

### COMBINED STATE AND LOCAL RATES PER \$100 VALUATION, 1988

	City of Mt. Sterling	Montgomery County
Land and Buildings	\$0.996	\$0.749
Manufacturing		
Machinery	0.150	0.150
Pollution Control		
Equipment	0.150	0.150
Inventories		
Raw Materials	0.001	0.001
Goods in Process	0.001	0.001
Finished Goods	0.817	0.573
Automobiles & Trucks	1.310	1.066
Other Tangible		
Personal Property	1.266	1.022
Intangibles (Accounts receivable*, money in hand, stock, notes, bonds)	0.250	0.250
Goods Stored in Public Warehouses in Transit Status	0.001	0.001
Private Leaseholds in Industrial Revenue Bond Financed Facilities	0.015	0.015

\* Accounts receivable are taxed at 85 percent of face value, for an effective rate of \$0.2125 per \$100 valuation.

## EDUCATION

### Public Schools

#### Montgomery County

Total Enrollment (Fall, 1988)	4,129
Accreditation	Southern Association of Colleges and Schools
Pupil-Teacher Ratio (1987-88)	18.3-1
Percent High School Graduates to College (1987-88)	44.5
Expenditures Per Pupil (1987-88)	\$2,324.59

### Nonpublic Schools

<u>School</u>	<u>Enrollment</u>	<u>Grades</u>
Mt. Sterling Christian School	62	K-2

### Area Colleges and Universities

<u>Name</u>	<u>Location (Miles distant)</u>	<u>Enrollment (Fall, 1988)</u>
Morehead State University	Morehead (31)	7,379
Lexington Community College	Lexington (36)	3,401
Transylvania University	Lexington (36)	1,041
University of Kentucky	Lexington (36)	22,824
Eastern Kentucky University	Richmond (37)	13,664
Georgetown College	Georgetown (46)	1,471
Midway College	Midway (48)	396
Maysville Community College	Maysville (49)	873
Berea College	Berea (49)	1,527
Asbury College	Wilmore (55)	987
Kentucky State University	Frankfort (59)	2,222

## Vocational Training

Vocational training is available at both the state vocational-technical schools and the area vocational education centers. The state vocational-technical schools are post-secondary institutions. The area vocational education centers are designed to supplement the curriculum of high school students. Both the state vocational-technical schools and the area vocational education centers offer evening courses to enable working adults to upgrade current job skills.

Arrangements can be made to provide training in the specific production skills required by an industrial plant. Instruction may be conducted either in the vocational school or in the industrial plant, depending upon the desired arrangement and the availability of special equipment.

### Bluegrass State Skills Corporation

The Bluegrass State Skills Corporation, an independent public corporation created and funded by the Kentucky General Assembly, provides programs of skills training to meet the needs of business and industry from entry level to advanced training, and from upgrading present employees to retraining experienced workers.

The Bluegrass State Skills Corporation is the primary source for skills training assistance for a new or existing company. The Corporation works in partnership with other employment and job training resources and programs, as well as Kentucky's economic development activities, to package a program customized to meet the specific needs of a company.

<u>Vocational School</u>	<u>Location (Miles distant)</u>	<u>Enrollment Fall, 1987</u>
Montgomery County Area Vocational Education Center	Mt. Sterling	416
Rowan State Vocational-Technical School	Morehead (31)	679

## OTHER LOCAL FACILITIES

### Local Medical Personnel

Physicians - 23  
Dentists - 11

### Hospitals

<u>General Hospital</u>	<u>Location</u>	<u>Beds</u>
Mary Chiles Hospital	Mt. Sterling	104

Medical staff - 25 doctors, 55 registered nurses, 25 licensed practical nurses

### Other Medical Facilities and Services

Cave Run Clinic  
Montgomery County Ambulance Service  
Montgomery County Health Center  
Mt. Sterling Clinic  
Mt. Sterling Medical Center  
Pathways, Inc.

### Banks and Savings & Loans

Commonwealth Bank FSB  
The Exchange Bank of Kentucky  
Montgomery & Traders Bank & Trust Company  
Mt. Sterling National Bank

### Newspapers

Montgomery Times (weekly)  
Mt. Sterling Advocate (weekly)

### Telephone Service

South Central Bell

## RECREATION

### Local

Mt. Sterling offers a variety of recreational opportunities for all ages. The Mt. Sterling-Montgomery County Recreation, Tourism, and Convention Commission maintains the facilities in the three local parks. The Mt. Sterling-Montgomery County Pool and Park contains two junior Olympic-size swimming pools, bathhouse facilities, four lighted tennis courts, an outdoor basketball court, a tot lot with a variety of playground equipment, and a picnic area with a covered shelter. The park has two Little League baseball diamonds, an all-purpose building, and a picnic area. Supervised programs are offered year-round in activities such as softball, baseball, swimming, tennis, Little League football, soccer, and adult basketball and volleyball.

The Montgomery County Board of Education maintains a variety of recreational facilities at the local schools which can be used for a number of supervised programs. These facilities include five gymnasiums, two football fields, three soccer fields, two Little League baseball diamonds, five tennis courts, three playgrounds and an outdoor basketball court.

The city is currently building a new park which will be completed by spring of 1990. In addition, a park is being built in the Camargo community. The new park will include two picnic shelters, a walking track, a horse shoe pit, and tennis courts.

Private recreational facilities include a country club with a swimming pool and a 9-hole golf course; a drive-in movie theatre; Sid Calk Lake, Inc., a private recreational and real estate development; the McKee Boy Scout Reservation; and Greenbriar Lake, a fishing lake.

October Court Day is an annual event which attracts thousands of people to Mt. Sterling. With the old time trading and selling of everything from Barlow knives to hunting dogs, this event marks the opening of the fall term of court. Court Day is held on the third Monday in October, however, the festivities begin the Saturday before.

### Area (Within 40 miles)

Daniel Boone National Forest  
Fort Boonesborough State Park  
Cane Run Lake  
White Hall State Shrine  
Blue Licks Battlefield State Park  
Lexington  
Kentucky Horse Park

## COMMUNITY IMPROVEMENTS

### Recent

Mt. Sterling was chosen as a "Kentucky Certified City" in 1983-1988. The award is based on achievement in the following categories: economic development, transportation, public affairs, utilities, health, commercial development, housing, education and recreation. The Certified Cities Program is sponsored by the Kentucky Chamber of Commerce.

Construction of a new elementary school, located in Camargo, was recently completed. The school opened for the 1989-90 school year.

### Under Way

Mt. Sterling has recently begun a downtown revitalization project. Currently, all overhead utilities are being replaced by underground utilities, period street lighting is being installed, and landscaping will be added to a four-block area of downtown Mt. Sterling. The projected completion date is spring of 1990. The cost of the project is expected to total \$600,000.

The Montgomery County Fire Department has begun construction of a new park in Camargo. The park will have two picnic shelters, a walking track, horse shoe pits, tennis courts and restrooms. A Community Development Block Grant and matching funds totaling \$75,000 are being used to fund the project.

### Planned

Construction of a new United States Post Office is scheduled to begin in the fall of 1989 and is expected to be completed by fall of 1990. A new park with a playground will be constructed by spring of 1990 on land already owned by the city. Approximately \$10,000 worth of equipment will be purchased.