

1983

Industrial Resources: Nelson County - Bardstown

Kentucky Library Research Collections
Western Kentucky University, spcol@wku.edu

Follow this and additional works at: https://digitalcommons.wku.edu/nelson_cty



Part of the [Business Administration, Management, and Operations Commons](#), [Growth and Development Commons](#), and the [Infrastructure Commons](#)

Recommended Citation

Kentucky Library Research Collections, "Industrial Resources: Nelson County - Bardstown" (1983). *Nelson County*. Paper 6.
https://digitalcommons.wku.edu/nelson_cty/6

This Report is brought to you for free and open access by TopSCHOLAR®. It has been accepted for inclusion in Nelson County by an authorized administrator of TopSCHOLAR®. For more information, please contact topscholar@wku.edu.

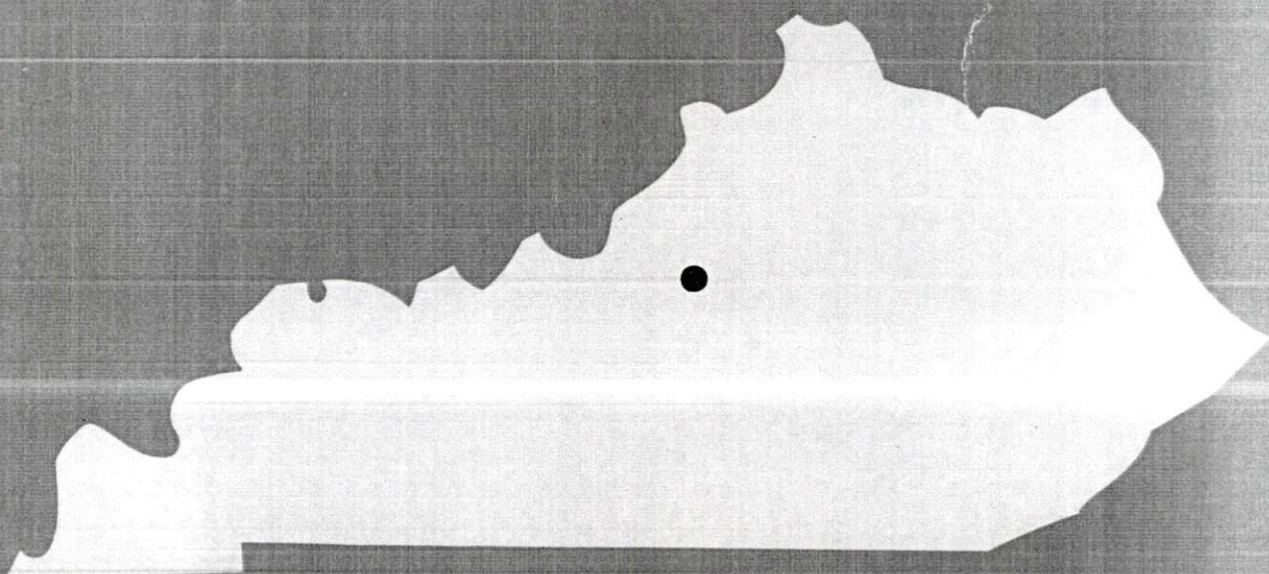
IR
308

Nelson

1983

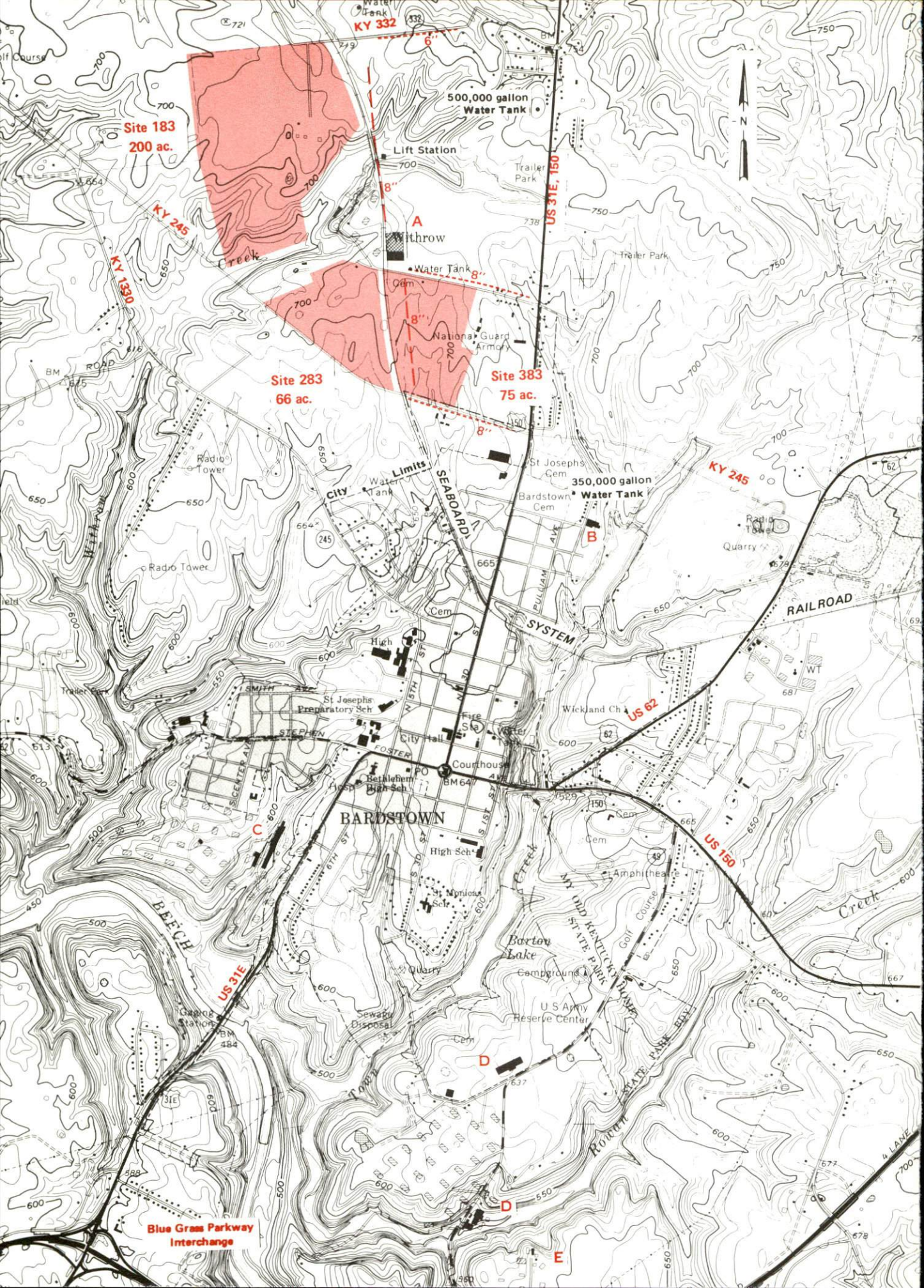
**A comprehensive
report on**

Bardstown, Ky.



KENTUCKY & CO.

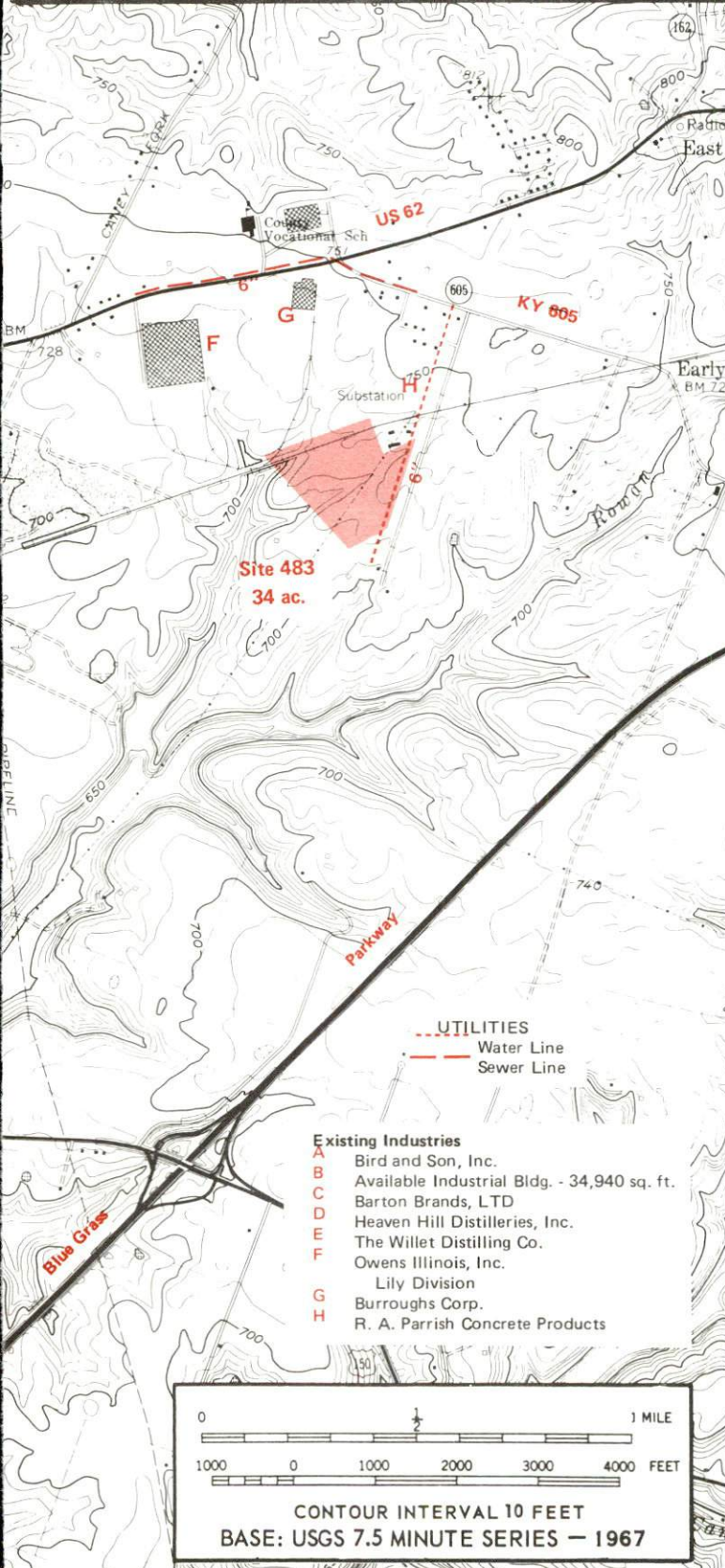
The state that's run like a business.



BARDSTOWN, KENTUCKY

Industrial Sites — 1983

For more information contact the Department of Economic Development, Office of Business Development, Industrial Development Division, Capital Plaza Tower, Frankfort, Kentucky 40601 (502-564-7140).



Site 183 - 200 Acres

LOCATION: Approximately 0.5 mile northwest of city limits
ZONING: Agricultural
HIGHWAY ACCESS: KY 332 adjacent to northeast boundary;
 KY 245 approximately 200 feet from southwest boundary
 US 31E, US 150 approximately 1.2 miles east via KY 245;
 Blue Grass Parkway interchange approximately 5 miles south via US 31 E and KY 245
RAILROAD: Seaboard System Railroad along northeastern boundary
WATER: Bardstown Municipal Light and Water Company
 Size Line: 6-inch line approximately 600 feet east across Seaboard System Railroad; 8-inch line approximately 1600 feet southeast across Seaboard System Railroad
NATURAL GAS: Louisville Gas and Electric Company
 Size Line: 8-inch line approximately 600 feet east across Seaboard System Railroad
ELECTRICITY: Salt River RECC
SEWERAGE: Bardstown Municipal Sewerage Service
 Size Line: 8-inch line approximately 300 feet east across Seaboard System Railroad
OWNERSHIP: Private

Site 283 - 66 Acres

LOCATION: Approximately 500 feet northwest of city limits
ZONING: Industrial
HIGHWAY ACCESS: KY 245 adjacent to southern boundary;
 US 31E, US 150 approximately 0.5 mile east via KY 245;
 Blue Grass Parkway interchange approximately 3.8 miles south via US 31E and KY 245
RAILROAD: Seaboard System Railroad along eastern boundary
WATER: Bardstown Municipal Light and Water Company
 Size Line: 8-inch line approximately 500 feet southeast across Seaboard System Railroad along south side of KY 245; 8-inch line approximately 600 feet east across Seaboard System Railroad
NATURAL GAS: Louisville Gas and Electric Company
 Size Line: 8-inch line approximately 400 feet east across Seaboard System Railroad
ELECTRICITY: Salt River RECC
SEWERAGE: Bardstown Municipal Sewerage Service
 Size Line: 8-inch line approximately 300 feet east across Seaboard System Railroad
OWNERSHIP: Bardstown Industrial Development Corporation

Site 383 - 75 Acres

LOCATION: Adjacent to northwest city limits
ZONING: Industrial
HIGHWAY ACCESS: KY 245 adjacent to southern boundary;
 US 31E, US 150 approximately 0.3 mile east via KY 245;
 Blue Grass Parkway interchange approximately 3.5 miles south via US 31E and KY 245
RAILROAD: Seaboard System Railroad along western boundary
WATER: Bardstown Municipal Light and Water Company
 Size Line: 8-inch line approximately 100 feet north across paved access road; 8-inch line approximately 100 feet south across KY 245
NATURAL GAS: Louisville Gas and Electric Company
 Size Line: 8-inch line along northern boundary
ELECTRICITY: Bardstown Municipal Light and Water Company
SEWERAGE: Bardstown Municipal Sewerage Service
 Size Line: 8-inch line passes through western section of site
OWNERSHIP: Bardstown Industrial Development Corporation

Site 483 - 34 Acres

LOCATION: Approximately 1.5 miles east of city limits
ZONING: Industrial
HIGHWAY ACCESS: KY 605 approximately 0.3 mile north via paved access road; Blue Grass Parkway interchange approximately 5.0 miles south via KY 605, US 62 and US 150
RAILROAD: Seaboard System Railroad along northern boundary
WATER: Bardstown Municipal Light and Water Company
 Size Line: 6-inch line along eastern boundary
NATURAL GAS: Louisville Gas and Electric Company
 Size Line: 4-inch medium pressure line approximately 2500 feet north along north side of US 62
ELECTRICITY: Kentucky Utilities Company
SEWERAGE: Bardstown Municipal Sewerage Service
 Size Line: 8-inch line approximately 2000 feet north along south side of US 62; Proposed 12-inch line to pass through site, completion scheduled for Spring of 1984
OWNERSHIP: Private

A COMPREHENSIVE REPORT ON
BARDSTOWN, KENTUCKY

Prepared by
The Kentucky Department of Economic Development
Division of Research and Planning
in cooperation with
The Bardstown Industrial Development Corporation
and
Bardstown/Nelson County Chamber of Commerce

1983

TABLE OF CONTENTS

<u>Chapter</u>	<u>Page</u>
INDUSTRIAL SITES	i
BARDSTOWN, KENTUCKY - A RESOURCE PROFILE	1
THE LABOR MARKET AREA	3
Population	3
Labor Force Characteristics of Residents, 1982	3
Selected Components of Nonagricultural Employment, by Place of Work, 1982	4
Nelson County Manufacturing Firms, Their Products and Employment	5
Labor Organizations in Manufacturing Firms	7
Industrial Services	8
Estimated Male Labor Supply	9
Estimated Female Labor Supply	10
Average Weekly Wages by Industry, by Place of Work, 1982	11
Per Capita Personal Income	13
TRANSPORTATION	14
Rail	14
Highways	14
Truck Service	15
Air	17
Bus	17
Taxi	17
Rental Services	17
Water	17
POWER AND FUEL	18
Electricity	18
Natural Gas	19
Other Fuels	19
WATER AND SEWERAGE	20
Public Water Supply	20
Raw Water	20
Sewerage	21
CLIMATE	22

<u>Chapter</u>	<u>Page</u>
LOCAL GOVERNMENT	23
City	23
County	23
Assessed Value of Property, 1982	23
Property Taxes	23
Combined State and Local Rates Per \$100 Valuation, 1982	24
Planning and Zoning	25
Safety	25
Police	25
Fire	25
Rescue Service	25
Refuse Collection and Disposal	26
EDUCATION	27
Public Schools	27
Nonpublic Schools	27
Area Colleges and Universities	28
Vocational Schools	28
HEALTH	30
Local Medical Personnel	30
Hospitals	30
Other Medical Facilities	30
Ambulance Service	30
Public Health	30
OTHER LOCAL FACILITIES	31
Communications	31
Library Services	31
Religious Institutions	32
Financial Institutions	32
Hotels and Motels	32
Clubs and Organizations	33
RECREATION	34
COMMUNITY IMPROVEMENTS	37

1983 EDITION
GENERAL HIGHWAY MAP
NELSON COUNTY
KENTUCKY

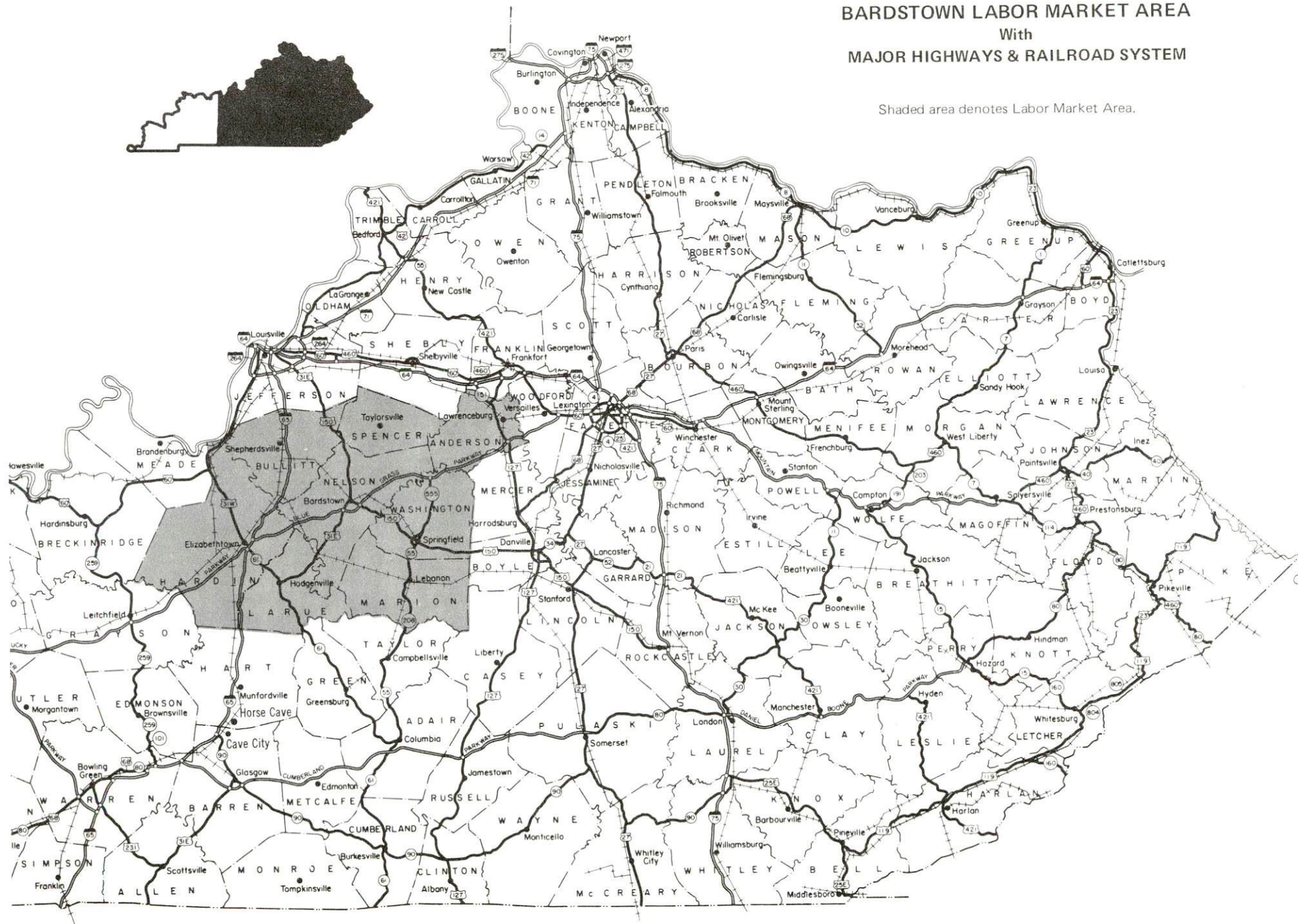
PREPARED BY THE
KENTUCKY TRANSPORTATION CABINET
DEPARTMENT OF HIGHWAYS
DIVISION OF PROJECT DEVELOPMENT
IN COOPERATION WITH THE
U.S. DEPARTMENT OF TRANSPORTATION
FEDERAL HIGHWAY ADMINISTRATION

0 1 2 3 4 5 MILES



BARDSTOWN LABOR MARKET AREA With MAJOR HIGHWAYS & RAILROAD SYSTEM

Shaded area denotes Labor Market Area.



BARDSTOWN, KENTUCKY - A RESOURCE PROFILE

Bardstown, county seat of Nelson County, is a 1981 and 1982 "Kentucky Certified City" and a four-time recipient of the "All Kentucky City" award. Located in the outer Bluegrass Region of central Kentucky, Bardstown is only 41 miles south of Louisville, Kentucky; 58 miles west of Lexington, Kentucky; 136 miles southwest of Cincinnati, Ohio; and 154 miles northeast of Nashville, Tennessee. In 1980, Bardstown had a population of 6,155.

Nelson County, covering 424 square miles, had a 1980 population of 27,584.

The Economic Framework

The total number of Nelson County residents employed in 1982 averaged 10,750 with 9,850 persons employed in nonagricultural jobs. Manufacturing employers in the county provided 1,950 jobs; wholesale and retail trade 1,440; state and local government 830; and 790 in the service industries. Manufacturing employment is greatest in the rubber and plastic products, food and kindred products and paper and allied products industries.

Per capita personal income in Nelson County in 1981 was \$7,505. Between 1977 and 1981 per capita income increased by 45 percent.

The Bardstown labor market area includes Nelson and its seven adjoining counties. The total number of residents in the labor market area employed in 1982 averaged 77,740 with 72,250 persons employed in nonagricultural jobs. Manufacturing employers in the county provided 9,890 jobs; wholesale and retail trade 9,780; state and local government 5,950; and 5,050 in the services industries.

Resources for Growth

1. Labor Supply - There is a current labor supply of 19,120 men and 9,270 women available for industrial jobs in the labor market area. In addition, from 1983 thru 1987, 10,090 young men and 9,630 young women will become 18 years of age and potentially available for work.

2. Transportation - The Seaboard System Railroad provides rail service to Bardstown. Highways serving Bardstown and the Blue Grass Parkway (a multi-lane roll road), U. S. 62, U. S. 31-E, U. S. 150 plus Kentucky Routes 49 and 245. Interstate 65 is accessible 23 miles west of Bardstown via the Blue Grass Parkway or 17 miles north of Bardstown via Kentucky Route 245. Fifteen common carriers have the authority to serve Bardstown. Samuels Field, located 2 miles west of Bardstown, has a 4,000-foot paved runway and chartered freight service. The nearest airport providing scheduled commercial airline service and an air freight terminal is Standiford Field in Louisville, 36 miles north of Bardstown.

3. Power and Fuel - Electric power is distributed in Bardstown by the Bardstown Municipal Light and Water Company which is supplied by Kentucky Utilities Company. Portions of Nelson County are served directly by Kentucky Utilities Company. Salt River RECC, supplied by East Kentucky Power Cooperative, serves the majority of Nelson County. Natural gas service is provided in Bardstown by Louisville Gas and Electric Company which is supplied by Texas Gas Transmission Corporation. There are three distributors of propane and five distributors of distillate fuel oil in Nelson County.

4. Education - Two public school systems, both accredited by the Southern Association of College and Schools, serve Nelson County. Bardstown Independent School System served 1,450 students and the Nelson County School System served 3,490 students during the 1982-83 school year.

There are eight colleges or universities within 45 miles of Bardstown.

The Elizabethtown State Vocational-Technical School, 26 miles west of Bardstown, offers training in 22 courses. The Nelson County Area Vocational Education Center in Bardstown offers training in 7 courses.

THE LABOR MARKET AREA

The Bardstown Labor Market Area includes Nelson County and the adjoining Kentucky counties of Anderson, Bullitt, Hardin, Larue, Marion, Spencer, and Washington.

POPULATION

<u>Area</u>	<u>1980</u>	<u>1970</u>	<u>Percent Nonwhite</u>
Bardstown	6,155	5,816	17.8
Labor Market Area	218,939	180,948	N/A
Nelson County	27,584	23,477	6.6
Anderson County	12,567	9,358	3.9
Bullitt County	43,346	26,090	0.8
Hardin County	88,917	78,421	14.7
Larue County	11,922	10,672	4.7
Marion County	17,910	16,714	8.0
Spencer County	5,929	5,488	2.7
Washington County	10,764	10,728	10.3

Note: The 1980 counts of population by race are provisional.

Sources: U. S. Department of Commerce, Bureau of the Census, 1980 Census of Population and Housing, March 1981; 1980 Census of Population, Number of Inhabitants. Population Research Unit, Urban Studies Center, University of Louisville, Kentucky Demographics: The 1980 Census of Kentucky, Characteristics of Population, Households, Housing, January 1982.

LABOR FORCE CHARACTERISTICS OF RESIDENTS, 1982

	<u>Nelson County</u>	<u>Labor Market Area</u>
Civilian Labor Force	12,713	87,895
Employment	10,748	77,742
Agricultural	894	5,489
Nonagricultural	9,854	72,253
Unemployment	1,965	10,153
Rate of Unemployment (%)	15.5	11.6

Source: Kentucky Cabinet for Human Resources, Kentucky Labor Force Estimates, Annual Averages, 1982.

SELECTED COMPONENTS OF NONAGRICULTURAL EMPLOYMENT,
BY PLACE OF WORK, 1982

	<u>Nelson County</u>	<u>Labor Market Area</u>
All Industries (total)	5,863	35,537
Manufacturing	1,946	9,888
Wholesale & Retail Trade	1,443	9,777
Services	786	5,054
State/Local Government	834	5,950
Contract Construction	269	1,432

Source: Kentucky Cabinet for Human Resources, Average Monthly Workers Covered by Kentucky Unemployment Insurance Law, 1982.

NELSON COUNTY MANUFACTURING FIRMS,
THEIR PRODUCTS AND EMPLOYMENT

Firm (Establishment date)	Product	Employment			Labor Unions
		Total	Male	Female	
<u>Bardstown</u>					
Bardstown Asphalt Company, Inc. (1958)	Asphalt	6	6	0	
Bardstown Mills (1819)	Feed	8	8	0	
Barton Brands Ltd. (1879)	Whiskey, distillers dried grain	350	250	100	Distillery Workers*
Bird and Son, Inc. (1966)	Vinyl siding, gutters and shutters	170	135	30	Teamsters*
Boones Abattoir, Inc. (1946)	Meat process- ing	16	8	8	
Burroughs Corporation (1972)	Fabric business machine ribbons, paper rolls for business machines	200	70	130	Teamsters*
Chris's Creations (1981)	Furniture custom	4	3	1	
Cleveland Welding and Equipment Company (1950)	Steel tanks, miscellaneous steel fabri- cation	7	6	1	
Distillers Pride Corporation (1937)	Whiskey	34	17	17	Distillery Workers*
GBA Printing and Office Supply (1981)	Commercial printing	4	2	2	
Heaven Hill Distilleries, Inc. (1935)	Whiskey, gin, vodka, distillers dried grains	250	200	50	Distillery Workers*
Mago Construction Company, Inc. (1958)	Bituminous concrete, surface mixes	22	19	3	

(Contd.)

<u>Firm (Establishment date)</u>	<u>Product</u>	<u>Employment</u>			<u>Labor Unions</u>
		<u>Total</u>	<u>Male</u>	<u>Female</u>	
Owens-Illinois, Inc., Lily Division (1968)	Plastic cups and con- tainers, plastic bottle labels, plastic bottle carriers	500	350	150	Paperworkers*
R. A. Parrish Concrete Products (1958)	Concrete block, silo staves, pre- cast concrete products	17	16	1	
Standard Publishing Company (1900)	Newspaper, letterpress printing, offset printing	36	19	17	
<u>Bloomfield</u>					
Glisson's Cabinet Shop, Inc. (1973)	Furniture custom, antique reproduced furniture, wooden accent items	3	2	1	
D. B. Sutherland and Sons, Inc. (1810)	Flour, corn meal, season- ed flour for meat and poultry, feed	13	11	2	
<u>Boston</u>					
James B. Beam Distilling Company (1953)	Whiskey, distillers dried grain	73	66	7	Distillery Workers*
David E. Wallace (1950)	Country hams	2	2	0	
(Contd.)					

<u>Firm</u> (<u>Establishment date</u>)	<u>Product</u>	<u>Employment</u>			<u>Labor Unions</u>
		<u>Total</u>	<u>Male</u>	<u>Female</u>	
Kirby Woosley and Son (1950)	Lumber, crossties, chips	12	11	1	
<u>New Haven</u>					
Log Homes, Inc. (1977)	Log homes	8	7	1	

*See Labor Organizations below.

Source: Kentucky Department of Economic Development, Division of Research and Planning.

Recent Manufacturing Developments

American Greeting Corporation has begun site preparation work for their new plant location in Bardstown. A 710,000-square-foot building will be constructed during 1983 and the plant is scheduled to be in operation in January 1984. Initial employment at the new facility will be approximately 500 to 600 with eventual employment to reach 800 to 900.

LABOR ORGANIZATIONS IN MANUFACTURING FIRMS

<u>Union</u>	<u>Representing workers at:</u>
Distillery, Wine and Allied Workers' International Union, AFL-CIO-CLC	Barton Brands, Ltd; Distillers Pride Corporation; Heaven Hill Distilleries; James B. Beam Distilling Company
International Brotherhood of Teamsters, Chauffeurs, Warehousemen and Helpers of America	Bird and Son, Inc.; Burroughs Corporation
United Paperworkers International Union, AFL-CIO	Owens-Illinois, Inc., Lily Division

INDUSTRIAL SERVICES

<u>Types of Services</u>	<u>Location</u>	<u>Mileage from Bardstown</u>
Electric Motor Repair	Lebanon	25
	Elizabethtown	26
Grinding, Precision & Tool	Louisville	41
Heat Treating Facilities	Louisville	41
Industrial Gases	Elizabethtown	26
	Louisville	41
Industrial Waste Removal	Elizabethtown	26
	Louisville	41
Machine Shops, Tool & Die	Springfield	17
	Elizabethtown	26
Metal Finishers	Elizabethtown	26
	Louisville	41
Metal Service Centers	Louisville	41
Millwrights	Elizabethtown	26
	Louisville	41

Source: Kentucky Department of Economic Development, Kentucky Directory of Selected Industrial Services, 1983.

ESTIMATED MALE LABOR SUPPLY
BARDSTOWN LABOR MARKET AREA

Area	Total	Unemployed	Current		Future
			Under- employed	Not in Labor Force	Becoming 18 years of age 1983 thru 1987
Labor Market Area*	19,119	5,530	7,030	6,559	10,090
Nelson	2,034	1,132	471	431	1,397
Anderson	670	294	139	237	564
Bullitt	1,771	1,210	561	0	2,519
Hardin	11,138	1,465	5,097	4,576	3,269
Larue	926	300	213	413	484
Marion	1,356	572	337	447	994
Spencer	416	175	84	157	290
Washington	808	382	128	298	573

*Additional workers may be drawn from other nearby counties.

Note: Unemployed - persons unemployed and actively seeking work; Under-employed - persons employed but working only 14 to 26 weeks per year; Not in Labor Force - represents the number of persons who would enter the labor force if suitable employment were available (based on the assumption that persons in Kentucky would like to participate in the labor force in the same proportion that they do nationally).

Sources: Kentucky Cabinet for Human Resources, Kentucky Labor Supply Estimates by Area Development District and County, 1981. Kentucky Department of Economic Development, Future Labor Supply Becoming 18 Years of Age, 1983 thru 1987.

ESTIMATED FEMALE LABOR SUPPLY
BARDSTOWN LABOR MARKET AREA

Area			Current		Future
	Total	Unemployed	Under- employed	Not in Labor Force	Becoming 18 years of age 1983 thru 1987
Labor Market Area*	9,274	2,384	4,276	2,614	9,629
Nelson	1,069	474	595	0	1,364
Anderson	373	152	221	0	524
Bullitt	1,477	541	936	0	2,408
Hardin	4,864	613	1,782	2,469	3,169
Larue	372	125	243	4	477
Marion	583	239	299	45	946
Spencer	227	79	52	96	255
Washington	309	161	148	0	486

*Additional workers may be drawn from other nearby counties.

Note: Unemployed - persons unemployed and actively seeking work; Under-employed - persons employed but working only 14 to 26 weeks per year; Not in Labor Force - represents the number of persons who would enter the labor force if suitable employment were available (based on the assumption that persons in Kentucky would like to participate in the labor force in the same proportion that they do nationally).

Sources: Kentucky Cabinet for Human Resources, Kentucky Labor Supply Estimates by Area Development District and County, 1981. Kentucky Department of Economic Development, Future Labor Supply Becoming 18 Years of Age, 1983 thru 1987.

AVERAGE WEEKLY WAGES BY INDUSTRY,
BY PLACE OF WORK, 1982

	<u>Nelson County</u>	<u>Anderson County</u>	<u>Bullitt County</u>	<u>Hardin County</u>
All Industries	\$257.25	\$261.36	\$245.49	\$249.04
Mining & Quarrying	381.44	*	*	*
Contract Construction	315.56	215.50	247.87	289.20
Manufacturing	337.83	322.56	328.16	324.66
Transportation, Communications & Public Utilities	390.66	395.22	261.38	298.75
Wholesale & Retail Trade	173.27	204.91	163.58	182.15
Finance, Insurance & Real Estate	221.60	235.23	235.33	247.84
Services	148.65	148.32	178.34	226.02
State/Local Government	245.30	233.45	245.84	270.23
Other	199.40	119.19	122.63	191.24
	<u>Larue County</u>	<u>Marion County</u>	<u>Spencer County</u>	<u>Washington County</u>
All Industries	\$190.88	\$203.35	\$216.59	\$200.50
Mining & Quarrying	0	*	*	*
Contract Construction	147.75	260.33	*	322.71
Manufacturing	179.34	244.32	*	208.58
Transportation, Communications & Public Utilities	373.43	235.98	233.94	198.58
Wholesale & Retail Trade	160.06	159.92	146.67	154.34
Finance, Insurance & Real Estate	263.97	243.19	*	271.01
Services	147.35	158.30	215.52	140.14
State/Local Government	227.17	228.89	220.08	215.24
Other	199.50	143.65	132.96	124.81

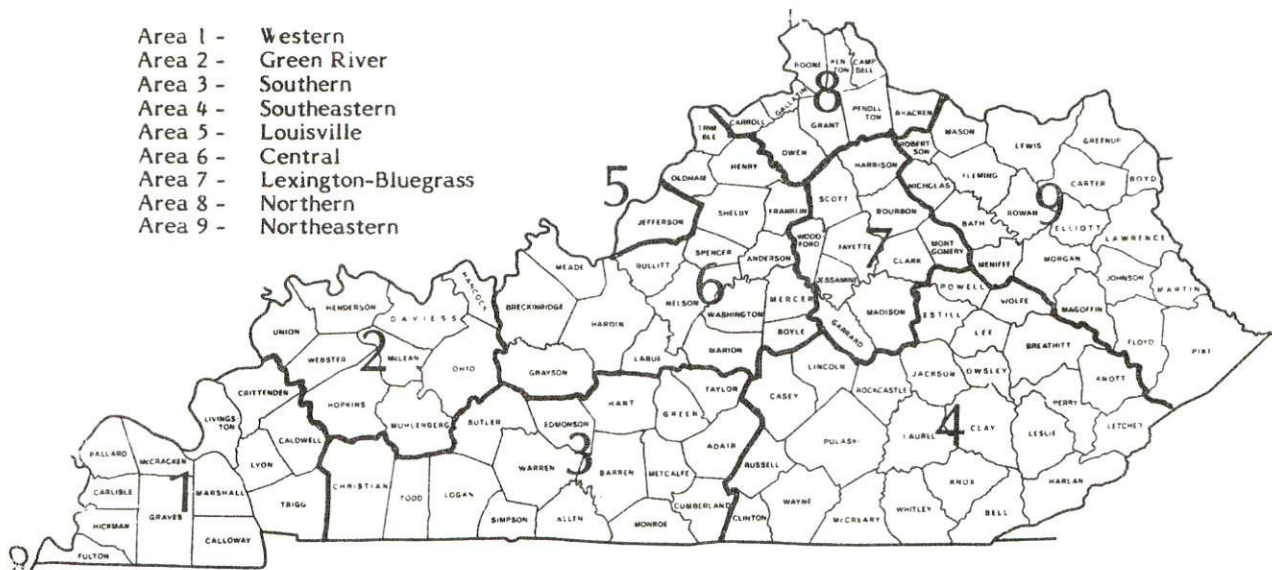
*Not disclosed.

Note: Excludes domestic workers, railway workers, certain nonprofit corporations, majority of federal government workers, and self-employed workers.

Source: Kentucky Cabinet for Human Resources, Average Weekly Wages of Workers Covered by Kentucky Unemployment Insurance Law, 1982.

Occupational wage rates for specific industries are usually not available to most government agencies, and wage data furnished to state employment agencies by individual industrial employers are protected from disclosure by federal law. The most reliable up-to-date wage information can be obtained by direct contact with local employers.

Associated Industries of Kentucky, a voluntary organization of Kentucky businesses, regularly collects occupational wage rates and fringe benefits data from participating member firms. Data are compiled for over 127 clearly defined office, production, and service occupations. Tabulations are published for nine geographical areas of Kentucky, as shown on the map below. It should be noted that the data may be weighted by the preponderance of firms in the larger cities and may be somewhat higher than the rates paid in the smaller communities. Data from these tabulations are available, upon request, from the Kentucky Department of Economic Development, Frankfort, Kentucky 40601.



Associated Industries of Kentucky Area Wage Surveys

PER CAPITA PERSONAL INCOME

<u>Area</u>	<u>1977</u>	<u>1981</u>	<u>Percent Change</u>
Nelson County	\$5,165	\$7,505	45.3
Labor Market Area Range	\$3,798 - 6,000	\$5,730 - 8,467	N/A
Kentucky	5,797	8,416	45.2
U. S.	6,984	10,495	50.3

Source: U. S. Bureau of Economic Analysis, Kentucky Economic Information System, May 1983.

TRANSPORTATION

Rail

Line serving Bardstown - Seaboard System Railroad

Services - Branch line; local turnaround service daily to Springfield; team track space for 20 to 25 cars; switching facilities; siding space for 28 cars; piggyback service*

For details on routing, schedules, rates, and services, contact:

Manager of Industrial Development
Seaboard System Railroad
P. O. Box 32290
Louisville, Kentucky 40232
(502) 587-5228

Highways

Bardstown is served by the Blue Grass Parkway, U. S. 62, U. S. 31-E, U. S. 150 plus Kentucky Routes 49 and 245. The Blue Grass Parkway, a multi-lane toll road, serves Bardstown with two interchanges to the southeast and southwest of the city. The Blue Grass Parkway connects with Interstate 65 near Elizabethtown, 23 miles west of Bardstown. In addition, northbound Interstate 65 is accessible 17 miles northwest of Bardstown via Kentucky Route 245.

All highways which serve Bardstown are "AAA" rated (80,000-pound gross load limit) trucking highways except U. S. 31-E and Kentucky 49 south of the Blue Grass Parkway.

*Seaboard System Railroad provides piggyback service to Bardstown through the Louisville ramp with highway service substituted for rail between the two cities. Rates are charged from Bardstown.

Truck Service

Company

Bestway Express, Inc.*
Central Motor Express, Inc.**
Central Transport, Inc.*
Distillery Transfer Service
(distillery products and
supplies only)**(T)
Eldin Brothers, Inc.
(distillery products and
supplies only)**
F.M.S. Transportation
(irregular route common
carrier)***
Interstate System*
Leoni Motor Express, Inc.**
The Mason and Dixon Lines,
Inc.**
McLean Trucking Company*
Overnite Transportation
Company**
Robbins Truck Line, Inc.**
Rapier Smith, Inc.**(T)
Smith's Transfer Corporation**
Thurston Motor Lines, Inc.**

Home Office

520 Lester Avenue
Nashville, Tennessee 37210
P. O. Drawer C
Campbellsville, Kentucky 42718
34200 Mound Road
Sterling Heights, Michigan 48077

P. O. Box H
Bardstown, Kentucky 40004

Route 2
New Haven, Kentucky 40051

2564 Harley Drive
St. Louis, Missouri 63043
110 Ionia N. W.
Grand Rapids, Michigan 49503
Chicago Heights, Illinois 60411

P. O. Box 969
Kingsport, Tennessee 37662
P. O. Box 213
Winston-Salem, North Carolina 27154

P. O. Box 1216
Richmond, Virginia 23209
Hardinsburg, Kentucky 40143
P. O. Box 848
Bardstown, Kentucky 40004
P. O. Box 1000
Staunton, Virginia 24401
600 Johnston Road
Charlotte, North Carolina 28206

(T)Local terminal.

*Interstate only.

**Interstate and intrastate service.

***Interstate and intrastate service, truckload only.

Other Freight ServicesNearest Shipping Center or Home Office

Purolator Courier Corporation*
 United Parcel Service**
 KATO Express, Inc. (air
 cargo service)***

Louisville, 41 miles north of Bardstown
 Louisville, 41 miles north of Bardstown
 Elizabethtown, 26 miles west of Bardstown

HIGHWAY MILES AND TRUCK TRANSIT TIME IN DAYS FROM
 BARDSTOWN, KENTUCKY, TO SELECTED MARKET CENTERS

City	Highway Miles	Delivery Time TL	City	Highway Miles	Delivery Time TL
Atlanta, Ga.	396	1	Los Angeles, Ca.	2,149	5
Baltimore, Md.	599	1-2	Louisville, Ky.	41	1
Birmingham, Ala.	348	1	Nashville, Tenn.	154	1
Chicago, Ill.	333	1	New Orleans, La.	671	2
Cincinnati, Ohio	136	1	New York, N. Y.	761	2-3
Cleveland, Ohio	375	1	Pittsburgh, Pa.	401	1
Detroit, Mich.	395	1-2	St. Louis, Mo.	304	1
Knoxville, Tenn.	239	1			

Note: Mileage computations are via the best interstate or primary highways, not necessarily the most direct route of travel. Delivery time does not include day of pickup.

Sources: Rand McNally Interstate Road Atlas, 1981. Official Kentucky Mileage Map, 1980. Delivery time - Overnite Transportation Company, P. O. Box 1216, Richmond, Virginia 23209.

*For regular scheduled pickups or for occasional pickups, arrangements must be made with the Louisville office of Purolator Courier Corporation.

**For regular scheduled pickups or for occasional pickups, arrangements must be made with the Louisville office of United Parcel Service.

***Daily pickup and delivery service is available to and from Standiford Field in Louisville. Arrangements for service should be made through the home office in Elizabethtown.

Air

Local

Location: Samuels Field
Runways: 2 miles west of Bardstown
Length: 1 paved
Traffic: 4,000 feet
Control: Wind sock, Unicom
Lighting: Sundown to sunrise, rotating beacon, medium intensity
runway edge lights, obstruction lights, REIL, SAVASI
Services: Fuel (100, 80), charter, flight instruction, hangar,
storage, repairs, maintenance
Air Freight
Service: Chartered air freight services must be arranged

Nearest Scheduled Commercial Airline Service

Location: Standiford Field
5 miles southeast of center of Louisville, Kentucky;
36 miles north of Bardstown
Runways: 3 paved
Length: 7,800 feet; 7,250 feet; 5,000 feet
Traffic:
Control: Control tower
Lighting: Runways, obstructions, beacon and approach and touch-
down lights, center line on one runway
Services: Continental, Delta, Eastern, Ozark, Piedmont, TWA,
United, USAir, Wright Airways, Allegheny Commuter,
Comair; fuel - 100 and jet-A; tie downs; major
A & P repairs; major Avionics repairs; APU,
charter, oxygen, U. S. Customs; taxi, car rentals,
limousine, courtesy car, public transit; weather
information; restaurant, snack bar
Air Freight
Service: Air freight terminal

Bus - Southern Greyhound Bus Lines

Taxi - One company, 24-hour service

Rental Services - Car truck and trailer rentals are available locally.

Water

Bardstown is located 41 miles south of the Ohio River at Louisville where port facilities are available. The Louisville-Jefferson County Riverport is designated as a Foreign Trade Zone and offers U. S. customs services for exports and imports.

POWER AND FUEL

Electricity

Company serving Bardstown - Bardstown Municipal Light and Water Company
Source of power - Kentucky Utilities Company
Total generating capacity - 2,639,100 KW*
For industrial rates contact:

Bardstown Municipal Light and Water Company
220 N. Fifth Street
P. O. Box 368
Bardstown, Kentucky 40004
(502) 348-5947

Company serving a small portion of Nelson County - Kentucky
Utilities Company
Source of power - Kentucky Utilities Company
Total generating capacity - 2,639,100 KW*
For industrial rates contact:

Industrial Development Department
Kentucky Utilities Company
One Quality Street
Lexington, Kentucky 40507
(606) 255-1461

Company serving the majority of Nelson County - Salt River Rural
Electric Cooperative Corporation
Source of power - East Kentucky Power Cooperative
Total generating capacity - 1,304,000 KW
For industrial rates contact:

Industrial Development Division
East Kentucky Power Cooperative
P. O. Box 707
Winchester, Kentucky 40391
(606) 744-4812

and/or

Salt River RECC
111 West Brashear Avenue
Bardstown, Kentucky 40004
(502) 348-3931

*A new generating unit is under construction in Carroll County. Due to be completed in 1984, the unit will have a generating capacity of 511,000 KW.

Natural Gas

Company serving Bardstown - Louisville Gas and Electric Company

Source of supply - Texas Gas Transmission Corporation

Size of transmission mains - 26-inch (supplier);
8-inch (distributor)

Distribution mains - 8, 6, 4 and 2 inches

Distribution pressure - 45 psi

Btu content - 1,050 per cubic foot

Specific gravity - .588

For rates and supplies contact:

Manager, Market Services Department
Louisville Gas and Electric Company
311 W. Chestnut Street
P. O. Box 32010
Louisville, Kentucky 40232
(502) 566-4253

Other Fuels (Nelson County)

Propane

Coleman Gas Service Company
(bulk service)
1106 N. Third Street
Bardstown, Kentucky 40004

Amerigas (bulk service)
Depot Street
New Haven, Kentucky 40051

Humphrey Brothers' Hardware
Main Street
Bloomfield, Kentucky 40008

Fuel oils

Distillate fuel oil -

Newcomb Oil Company (Gulf)
1360 E. John Rowan Street
Bardstown, Kentucky 40004

Culver's Auto Salvage (Ashland)
Culverton Street
New Haven, Kentucky 40051

Regal Oil Company, Inc. (Shell)
Main Street
Bloomfield, Kentucky 40008

Spank Oil Company (Chevron)
Maple Hill
Bardstown, Kentucky 40004

Bowling and Cecil Marathon
Distributors
Center Street
New Haven, Kentucky 40051

Residual fuel oil - Arrangements must be made with the refinery.

Low sulphur content coal - Available in Kentucky.

WATER AND SEWERAGE

Public Water Supply

Company serving Bardstown - Bardstown Municipal Light and Water Company*
220 N. Fifth Street
Bardstown, Kentucky 40004
(502) 348-5947

Source - Simpson Lake

Treatment plant capacity - 3,000,000 gallons per day

Average daily consumption - 1,900,000 gallons

Peak daily consumption - 2,500,000 gallons

Type treatment - Filtration, coagulation, chlorination, sedimentation,
fluoride adjustment, disinfection, softening

Storage capacity - 2,665,000 gallons including clear well

Size lines - 16, 12, 10, 8, 6, 4 and 2 inches

Average pressure - 45 psi

Average temperature - 61 degrees F.

MONTHLY WATER RATES

First	3,000 gallons	\$3.75 (Minimum)
Next	75,000 gallons	.535 per M gallons
Over	78,000 gallons	.435 per M gallons

Tap-on charge: 5/8 x 3/4-inch meter - \$100 inside city
\$125 outside city
larger meters - charge is negotiated

Raw Water

Surface water sources - Rolling Fork and Beech Fork of the Salt River

Average discharge - Rolling Fork near Boston, 1,804 cfs
(43 years, USGS)

Expected ground water yield - 5 gpm or less over entire county

*In 1981 a project which increased the water treatment capacity to 3 million gallons per day was completed. Another expansion project is in the early planning stages. Tentative plans include increasing the treatment capacity to either 5.4 million or 6 million gallons per day.

Sewerage

Company serving Bardstown - Bardstown Municipal Light and Water Company*
220 N. Fifth Street
Bardstown, Kentucky 40004
(502) 348-5947

Design capacity - 3,000,000 gallons per day

Average daily flow - 816,000 gallons**

Treatment - Primary, secondary, tertiary

Type treatment - Aerated lagoons, packed biological reactor

Treated effluent discharged into - Town Creek

Size of sanitary mains - 18, 16, 12, 8 and 6 inches

Size of storm mains - Variable (separate from sanitary mains)

Monthly rates -

		<u>Inside City</u>	<u>Outside City</u>
First	3,000 gallons	\$4.50	\$5.50 Minimum
Over	3,000 gallons	.59	.59 per M gallons

Separate sewer rates are charged to users who discharge wastewater which differs significantly from domestic strength wastewater. These rates are based on flow volume, BOD, suspended solids, ammonia nitrogen and for any other parameter established by the city of Bardstown.

Tap-on charge: \$150 inside city
200 outside city

*Bardstown Municipal Light and Water Company completed a \$3 million expansion to the sewage treatment plant in 1982. The design capacity of the plant was increased to 3 million gallons per day.

**Kentucky Cabinet for Natural Resources and Environmental Protection.

CLIMATE

Nelson County

Temperature

Normal (30-year record)	55.2 degrees
Average annual 1981	54.2 degrees
Record highest, September 1954 (37-year record)	103 degrees
Record lowest, January 1963 (37-year record)	-21 degrees
Normal heating degree days (30-year record)	4,729
(Heating degree day totals are the sums of negative departures of average daily temperatures from 65 degrees F.)	

Precipitation

Normal (30-year record)	44.49 inches
Mean annual snowfall (37-year record)	16.7 inches
Total precipitation 1981	36.65 inches
Mean number days precipitation (.01 inch or more) (37-year record)	130
Mean number days thunderstorms (37-year record)	46

Prevailing Winds (17-year record)

South

Relative Humidity

1 a.m.	77 percent (17-year record)
7 a.m.	81 percent (18-year record)
1 p.m.	60 percent (18-year record)
7 p.m.	64 percent (18-year record)

Source: U. S. Department of Commerce, Environmental Science
Services Administration, Climatological Data, 1981.
Station of record: Lexington, Kentucky.

LOCAL GOVERNMENT

City

Structure - Mayor - 4-year term; 6 council members - 2-year terms

Budget 1982-83 - General Fund \$ 405,255

Water and Sewer Fund 758,500

City Electric System 2,689,500

Fees and licenses - Business licenses range from \$15 to \$500 per year depending upon the type of business; licenses for manufacturing firms are \$125

County

Structure - County Judge/Executive - 4-year term;

5 magistrates - 4-year terms

Budget 1982-83 - General Fund \$1,032,942; Road Fund \$572,121

Assessed Value of Property, 1982*

<u>Classes of Property</u>	<u>Bardstown</u>	<u>Nelson County</u>
Real Estate	\$73,218,792	\$306,403,667
Tangibles	28,014,296	60,773,031

Property Taxes

All property in Kentucky is assessed at 100 percent of fair cash value.

Land and buildings are taxed by the state and may be taxed by local jurisdictions. The state rate is \$0.224 per \$100 of assessed valuation.

Manufacturing machinery, raw materials inventories, pollution control equipment, and goods in the process of manufacture are not subject to local taxation. The state rate is \$0.15 per \$100.

Other tangible personal property owned by manufacturers (automobiles, trucks, finished goods, office furniture, office equipment) is taxed by the state at \$0.45 per \$100 and may be taxed by local jurisdictions.

Intangible personal property located in Kentucky (money in hand, shares of stocks, notes, bonds, accounts receivable, and other credits) is taxed by the state at \$0.25 per \$100, and is not subject to local taxation.

Property stored in public warehouses in a transit status is not subject to local taxation. The state rate is only \$0.015 per \$100.

Private leaseholds in industrial facilities owned by cities or counties and financed by industrial revenue bonds are subject to a state tax of \$0.015 per \$100 of value (essentially the lessee's equity, adjusted for appreciation or depreciation). Local taxation is not permitted.

*Excludes Homestead Exemptions.

Combined State and Local Rates Per \$100 Valuation, 1982*
(100% assessment)

Kentucky school districts levy property taxes on property located within individual school district boundaries. Two types of school districts are operated in Kentucky: 1) independent school districts which usually operate within a single city and often do not cover the entire city; and 2) common school districts which operate in portions of counties not covered by independent districts and cover the entire county when there is no independent district. School district boundaries are mutually exclusive and do not cross.

	<u>Site Inside City of Bardstown and within the Bardstown School District</u>	<u>Site Inside City of Bardstown and within the Nelson County School District</u>	<u>Site Inside Unincorporated Nelson County</u>
1. Land and build- ings	\$0.9151	\$0.8511	\$0.6131
2. Mfg. machinery, raw materials, goods in process, pollution control equipment	0.1500	0.1500	0.1500
3. Finished goods, office equipment, vehicles, other tangibles	1.2151	1.1341	0.8961
4. Intangibles (accounts rec., notes, bonds, etc.)	0.2500	0.2500	0.2500
5. Property stored in public warehouses in a transit status	0.0150	0.0150	0.0150
6. Leaseholds in industrial revenue bond financed plants	0.0150	0.0150	0.0150

*Kentucky Department of Economic Development.

Planning and Zoning

Joint agency - Joint City/County Planning Commission of Nelson County*

Zoning enforced - All areas

Subdivision regulations enforced - All areas

Local codes enforced - Building and housing (excluding single family residences)

Mandatory state codes enforced - Kentucky Plumbing Code, National Electric Code, Kentucky Boiler Regulations and Standards, Kentucky Building Code (modeled after BOCA code)

Safety

<u>Police</u>	<u>Bardstown</u>	<u>Nelson County</u>	
		<u>Police</u>	<u>Sheriff</u>
Total staff	16 full-time 2 part-time	3	4
Radio-patrol cars	3	3	4

Fire

Insurance Services Office,
Public Protection

Classification	6	**
Full-time staff	2	-
Volunteers	24	-

Rescue Service

Rescue service is provided by the Bardstown Fire Department. Rescue equipment includes: a van, boat, jaws of life, diving equipment, dragging equipment and other miscellaneous rescue equipment.

*Participating cities are Bardstown, Bloomfield, Fairfield, and New Haven.

**Four volunteer fire departments, in addition to Bardstown, provide fire protection in Nelson County: Bloomfield, Class 7; New Haven, Class 7; Rolling Fork, Class 9; and New Hope, Class 10.

Refuse Collection and Disposal

	<u>Bardstown</u>	<u>Nelson County</u>
Type service	Municipal	Private
Fee charged:		
residential	\$3 per month	\$5 per month
business	Variable*	Negotiated
industrial	Variable*	Negotiated
Collection frequency:		
residential	Weekly	Weekly
business	Variable	Negotiated
industrial	Variable	Negotiated
Trash pickup	Daily	Weekly
Disposal method	Landfill	Landfill

*Based on volume.

EDUCATION

Public Schools

	<u>Bardstown Independent</u>	<u>Nelson County</u>
Total Enrollment (December 1982)	1,447	3,489
Elementary	611	1,629
Junior High	-	888
Middle School	385	-
High School	451	972
Student-Teacher Ratio	17-1	16-1
Elementary	17-1	15-1
Junior High	-	17-1
Middle School	24-1	-
High School	13-1	18-1
Accreditation	Southern Association of Colleges and Schools	Southern Association of Colleges and Schools
Percent High School Graduates to College (1982)	45.3	26.1
Expenditures Per Pupil (1981-82)	\$1,825.54	\$1,614.56
Bonded Indebtedness (June 30, 1981)	\$1,105,000	\$2,005,000

Nonpublic Schools

	<u>Bardstown</u>	<u>Nelson County</u>
Total Enrollment	912	329
Elementary	612	329
High School	300	-
Student-Teacher Ratio	20-1	17-1
Elementary	22-1	17-1
High School	17-1	-

Area Colleges and Universities

<u>Name</u>	<u>Location (Miles distant)</u>	<u>Enrollment (Fall, 1982)</u>	<u>Highest Degree Conferred</u>
St. Catharine College	Springfield (17)	227	Associate
Elizabethtown Community College	Elizabethtown (26)	2,187	Associate
University of Louisville	Louisville (41)	19,744	Doctorate, M.D., D.M.D., J.D.
Bellarmino College	Louisville (41)	2,350	Masters
Spalding College	Louisville (41)	763	Masters, Specialist
Jefferson Community College	Louisville (41)	6,595	Associate
Centre College	Danville (44)	718	Baccalaureate
Campbellsville College	Campbellsville (45)	702	Baccalaureate

Vocational Schools

Both the state vocational-technical schools and the area vocational education centers are operated by the Kentucky Department of Education. The state vocational-technical schools enroll persons full time who are at least 16 years of age and not in school. These students attend classes for six hours each day. The area vocational education centers are designed to accommodate high school students who are at least 15 years of age. These students attend vocational school for three hours each day. The state vocational-technical schools and the area education centers offer evening courses to enable working adults to upgrade current job skills.

(Contd.)

Nearest State School

Location	Elizabethtown State Vocational - Technical School
Miles Distant	Elizabethtown 26
Curriculum	Business and Office Accounting Management* Clerical Secretarial Word Processing* Consumer and Home Economics Commercial Foods Retail Store Worker* Industrial Education Agricultural Mechanics* Air Conditioning Appliance Repair Auto Mechanics Carpentry Diesel Mechanics* Drafting Electronics* General Industry Worker* Industrial Electricity Industrial Maintenance Machine Shop Masonry* Plumbing* Radio and T. V. Repair Welding

Nearest Area Education Center

Location	Nelson County Area Vocational Education Center Bardstown
Curriculum	Health and Personal Service Occupations Health Services Industrial Education Air Conditioning/Heating Auto Mechanics Carpentry Cabinet Making Drafting Welding

Arrangements can be made to provide training in the specific production skills required by an industrial plant. Instruction may be conducted either in the vocational school or in the industrial plant, depending upon the desired arrangement and the availability of special equipment.

*Tentatively scheduled to begin January 1984.

HEALTH

Local Medical Personnel

Physicians - 15
Dentists - 7

Hospitals

<u>General Hospital</u>	<u>Location</u>	<u>Beds</u>
Flaget Memorial Hospital*	Bardstown	52

General hospital facilities - Clinical laboratory, operating room, 24-hour emergency service, OB services, cardiac intensive care unit, pharmacy, surgical recovery room, respiratory therapy department, radiology, nuclear medicine, ultra sound, and CT scanning

Medical staff - 20 physicians, 14 registered nurses (full-time), 14 registered nurses (part-time), 5 licensed practical nurses, 12 nurses aides (full-time), 6 nurses aides (part-time), 4 laboratory technologists, 1 registered X-ray technician

Other Medical Facilities

North Central Comprehensive Care Center
Sisters of Charity and Community Health Services

Ambulance Service

Name - Bardstown Ambulance Service
Staff - 20 emergency medical technicians
Service - 24-hours per day, 7 days per week, county-wide
Equipment - 4 ambulances, fully-equipped

Public Health

Facility - Nelson County Health Center
Staff - 3 registered nurses, 1 health environmentalist,
4 clerk typists (3 full-time, 1 part-time)

*The first phase of a renovation project at Flaget Memorial Hospital was completed in January 1983. The project increased the number of rooms and beds for medical surgery patients. Tentative plans for the second phase of the renovation would be a restructuring of the maternity and obstetrics ward.

OTHER LOCAL FACILITIES

Communications

Telephone - South Central Bell
Services - Standard

Telegraph - Western Union office and a toll-free telephone number

Postal - U. S. Post Office
Class - First
Mail received - Twice daily
Mail dispatched - Once daily

Newspapers - The Kentucky Standard
Bi-weekly and circulation - 9,600
Other papers received
from - Louisville and Lexington, Kentucky

Radio - WBRT-AM, WOKH-FM
(Major) Stations received from - Elizabethtown, Louisville and
Lexington, Kentucky; Cincinnati,
Ohio; Nashville, Tennessee

Television -
Cable service - yes
Reception from - Louisville, Lexington and Bowling Green, Kentucky;
Atlanta, Georgia
Kentucky Educational
Television - Elizabethtown transmitter, Channel 23

Library Services

Public library - Nelson County Public Library, Bardstown*
Size collection - 50,081
Circulation, 1981-82 - 107,778 volumes
Services - Bookmobile, periodicals, story hour, films, projectors,
color television, framed paintings, records, microfilm reader-
printer, copy machine, engraver appliance, paper cutter, newspapers,
magazines, portable public address system

*Branch libraries are located in Bloomfield, Boston, and New Haven.

Religious Institutions

Number of churches - 13

Denominations - AME Zion
Baptist
Christian
Church of Christ
Church of God
Disciples of Christ
Episcopal
Jehovah's Witnesses
Methodist
Presbyterian
Roman Catholic

Nearest Synagogues - Louisville, 41 miles north of Bardstown

Congregations - Adath Israel Brith Sholom (reform)
Adath Jeshurum (conservative)
Anshei Sfard (orthodox)
Keneseth Israel (orthodox)
Sholom (reform)

Financial Institutions

<u>Banks</u>	<u>Assets</u>	<u>Deposits</u>	<u>Statement Date</u>
Farmers Bank and Trust Company	\$60,047,895.97	\$51,759,729.92	12/31/82
Wilson and Muir Bank and Trust Company	62,883,904.00	54,680,339.00	12/31/82

<u>Savings and Loan Associations</u>	<u>Assets</u>	<u>Savings Accounts</u>	<u>Statement Date</u>
Nelson County Federal Savings and Loan Association, Inc.	\$ 23,642,573.88	\$ 21,856,672.14	12/31/82
First Federal Savings and Loan Association of Elizabethtown*	\$131,744,138.45	\$115,681,112.71	12/31/82

Hotels and Motels

Total number - 7**
Total rooms - 276

*Figures represent total assets and savings accounts of all locations of First Federal Savings and Loan Association of Elizabethtown.

**A new hotel to be located on Kentucky Route 245 in the northern Bardstown area is in the planning stage.

Clubs and Organizations

American Association of Retired Persons	NAACP
American Veterans of World War II, Korea and Vietnam (AMVETS)	Nelson County Council on Aging
American Legion	Nelson County Extension Service
American Legion Auxillary	Nelson County Historical Society
Babe Ruth League	Nelson County Voluntary Action
Bardstown Garden Club	Nelson County Medical Association
Bardstown Industrial Development Corporation	Nelson County Medical Auxillary
Bardstown-Nelson County Chamber of Commerce	19th Hole Golf Club
Bardstown Art League	Optimist
Bardstown-Nelson County Retired Teachers Association	Old Kentucky Home Board of Realtors
Beta Sigma Club	Parent-Teacher Association
Bethlehem Service Club	Parents Without Partners
Boy Scouts	Peanuts League
Brownies	Powder Puff Football
Business and Professional Women's Club	Red Cross
Cancer Society	Rotary International
Clean Community Service	Senior Citizens
Cub Scouts	Stephen Foster Music Club
Daughters of the American Revolution (DAR)	Track and Field Program
Distributive Education Club of America (DECA)	Veterans of Foreign Wars
Eastern Star	Welcome Wagon
Ebonese	Woman's Club
Fish and Game Club	
4-H	
Future Farmers of America (FFA)	
Girl Scouts	
Homemakers	
Heart Fund	
Hospital Auxillary	
Homebuilders Association of Central Kentucky	
Jaycees	
Jaycettes	
Jettistic	
Junior Achievement	
Junior Music Club	
Key Club	
Kiwanis	
Knights of Columbus	
Little League	
Lucky Eight	
Masons	
Minor League	

RECREATION

Local

Bardstown provides various recreational facilities which include an Olympic-size swimming pool, a gymnasium, a golf course, a football field, and two baseball diamonds. Other facilities are basketball courts, volleyball courts, and nine tennis courts, six of which are lighted. Playground and picnic areas are conveniently located to provide for family gatherings. Supervised recreational programs are: organized baseball and softball leagues, tennis instruction, Little League soccer, football, volleyball, and basketball; arts and crafts; weight lifting; Red Cross swimming programs; and exercise and yoga instructions.

Other facilities available in Bardstown include a country club, movie theaters, bowling facility, skating rink, lighted croquet court, health spa, miniature golf and community theater.

My Old Kentucky Home State Park, in Bardstown, portrays an image of the South's gentle and leisurely home life before the Civil War. The restored Georgian Colonial mansion is where composer Stephen Foster visited and where he was inspired to write "My Old Kentucky Home." One of the nation's most successful outdoor dramas, "The Stephen Foster Story", is presented in the park's amphitheatre mid-June until Labor Day. The park also offers a 40-site campground, a gift shop, a 9-hole golf course and pro shop, a picnic area, and planned recreation.

St. Joseph Cathedral, the first Catholic cathedral west of the Allegheny Mountains, was completed in 1819. The cathedral contains paintings which were personal gifts of Francis I of the Two Sicilies and Pope Leo XII.

Wickland, home of three governors, was completed in 1817. This beautiful three story brick mansion is the most perfect example of Georgian architecture in the United States. The owners occupy the home and provide personal tours of the mansion where the finest antique furniture is displayed.

The Old Talbott Tavern originally served as a stage coach stop. Erected in the latter part of the 18th century, the tavern is said to be the oldest hotel in continuous operation west of the Alleghenies.

Spalding Hall, established in 1819 as the St. Joseph College, served as a hospital for Union soldiers during the Civil War. It now houses a museum and an arts and crafts center.

The Barton Museum of Whiskey History displays a graphic picture of 170 years of the distilling industry in the United States.

Area (Within 45 miles)

Bernheim Forest Arboretum and Nature Center, located 15 miles northwest of Bardstown, is a privately endowed 10,000-acre forest and wildlife refuge. The area contains over 1,400 labeled varieties of plant, trees and shrubs; ornamental gardens; a museum; nature trail and waterfowl ponds.

Lincoln Homestead State Park, 25 miles southeast of Bardstown near Springfield, is a 153-acre park on the original land settled by Abraham Lincoln's family. The actual building in which Nancy Hanks, mother of President Lincoln, lived during her courtship with Thomas Lincoln is preserved here as well as a replica of the 1782 cabin where Lincoln lived as a boy. The park also has a museum, a gift shop, a picnic area, and an 18-hole golf course.

Abraham Lincoln Birthplace National Historic Site, located 25 miles southwest of Bardstown near Hodgenville, features the log cabin, which was the birthplace of Abraham Lincoln, enclosed within the granite memorial shrine. The grounds include 116 acres of the original Thomas Lincoln farm and a visitors' center with audiovisual programs and exhibits on the Lincoln family.

Perryville Battlefield State Shrine, 34 miles southeast of Bardstown near Perryville, is the site of the largest Civil War battle in Kentucky. A museum, a picnic area, and a playground are located on the grounds.

Louisville, 41 miles north of Bardstown, provides a wide variety of recreational opportunities. The most noted recreational event in Louisville is the Kentucky Derby at Churchill Downs. The "Run for the Roses" is the oldest continuously held horse race in the United States. Other attractions include: Macauley Theatre, Actors Theatre of Louisville, Louisville Children's Theatre, the Louisville Bach Society, the Louisville Orchestra, the Louisville Ballet, the Kentucky Opera Association, several museums, the Louisville Zoological Gardens, University of Louisville sporting events, rock concerts, and the Belle of Louisville sternwheeler.

E. P. "Tom" Sawyer State Park, 41 miles north of Bardstown, is a 400-acre park located in Louisville. Recreational facilities include an outdoor Olympic-size pool, a bathhouse, 12 lighted tennis courts, a picnic area, an archery range, and soccer fields. Planned recreation and a playground are offered year-round.

Constitution Square State Shrine, 44 miles southeast of Bardstown in Danville, is a reproduction of Kentucky's first courthouse square, including the original 1792 post office which was the first in the west.

Isaac Shelby State Shrine, also near Danville, is the burial site of Kentucky's first governor and one of the Commonwealth's statesmen.

(Contd.)

Old Fort Harrod State Park, 44 miles southeast of Bardstown, is a 28-acre park in Harrodsburg that features a full-scale reproduction of the original Fort Harrod. The park also contains the log cabin where Abraham Lincoln's parents were wed, the Mansion Museum which houses mementos associated with the great periods of Kentucky history, a pioneer cemetery, and a federal monument dedicated to pioneers. The "Legend of Daniel Boone", an outdoor drama which brings to life on stage the men and women who made Kentucky, is performed in the park amphitheatre during the summer months.

Green River Lake State Park near Campbellsville, 45 miles south of Bardstown, is made up of 1,300 acres surrounding an 8,200-acre lake. The park is open all year-round and offers 96 campsites, a beach, boat docks, fishing, swimming, and a picnic area.

COMMUNITY IMPROVEMENTS

Recent

Bardstown Municipal Light and Water Company completed a \$3 million expansion to the sewage treatment plant in 1982. The design capacity of the plant was increased to 3 million gallons per day.

In 1981 a project which increased the water treatment capacity in Bardstown to 3 million gallons per day was completed. Another expansion project is in the early planning stages. Tentative plans include increasing the treatment capacity to either 5.4 million or 6 million gallons per day.

Bardstown was chosen as a 1981 and 1982 "Kentucky Certified City." The award is based on achievement or potential in the following categories: economic development, transportation, public affairs, utilities, health, commercial development, housing, education, and recreation.

In the July 12, 1982 issue of U. S. News & World Report, Bardstown was picked as one of the ten most attractive cities in America in which to live.

Under Way

American Greetings Corporation has begun site preparation work for their new plant location in Bardstown. A 710,000-square-foot building will be constructed during 1983 and the plant is scheduled to be in operation in January 1984. Initial employment at the new facility will be approximately 500 to 600 with eventual employment to reach 800 to 900.

The first phase of a renovation project at Flaget Memorial Hospital was completed in January 1983. The project increased the number of rooms and beds for medical surgery patients. Tentative plans for the second phase of the renovation would be a restructuring of the maternity and obstetrics ward.

Bardstown is participating in the Governor's Economic Achievement Recognition (GEAR) program. GEAR, utilizing a team of economic and community development professionals, helps communities identify and solve specific economic development problems or needs. Four projects have been identified in connection with GEAR in Bardstown: 1) Develop a defined, organized industry retention program and schedule. In addition to ombudsman services, the program would have marketing features. 2) Develop a promotional program to attract a firm to a local available building. 3) Develop an off-season use for motel facilities with emphasis on conventions or other activities which would generate overnight business. 4) Organize a campaign to further develop transportation facilities, specifically an extension of Kentucky Highway 245 to connect with Blue Grass Parkway.

Planned

A new hotel to be located on Kentucky Route 245 in the northern Bardstown area is in the very early planning stages.

The Bardstown Industrial Development Corporation, the Bardstown-Nelson County Chamber of Commerce and the Bardstown Tourist Commission will move to a new office in the summer of 1983. The new location will be a renovated building in downtown Bardstown.