

1992

Industrial Resources: Pike County

Kentucky Library Research Collections
Western Kentucky University, spcol@wku.edu

Follow this and additional works at: https://digitalcommons.wku.edu/pike_cty

 Part of the [Business Administration, Management, and Operations Commons](#), [Growth and Development Commons](#), and the [Infrastructure Commons](#)

Recommended Citation

Kentucky Library Research Collections, "Industrial Resources: Pike County" (1992). *Pike County*. Paper 4.
https://digitalcommons.wku.edu/pike_cty/4

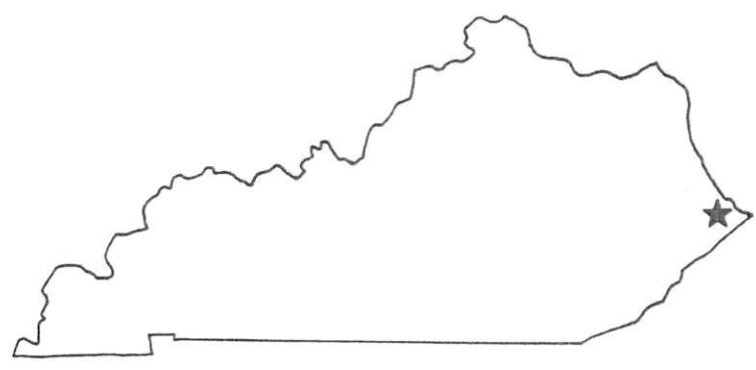
This Report is brought to you for free and open access by TopSCHOLAR®. It has been accepted for inclusion in Pike County by an authorized administrator of TopSCHOLAR®. For more information, please contact topscholar@wku.edu.

LK
157

Pike

Resources for Economic Development

Pike County



KENTUCKY

RESOURCES FOR ECONOMIC DEVELOPMENT
PIKE COUNTY, KENTUCKY

Prepared by
The Kentucky Cabinet for Economic Development
Division of Research and Planning
in cooperation with
Pikeville-Pike County Industrial Development
and Economic Authority (IDEA);
and
Pike County Chamber of Commerce

1992

Division Director - Pamela K. Riley; program manager - Keith Roberts; research - Barry K. Holder, Jr.; clerical - Wanda Sharp; graphics - Robert Owens, Pat Coleman; cartography - Edwin Scott, Dave Clark. Cost of printing paid from state funds.

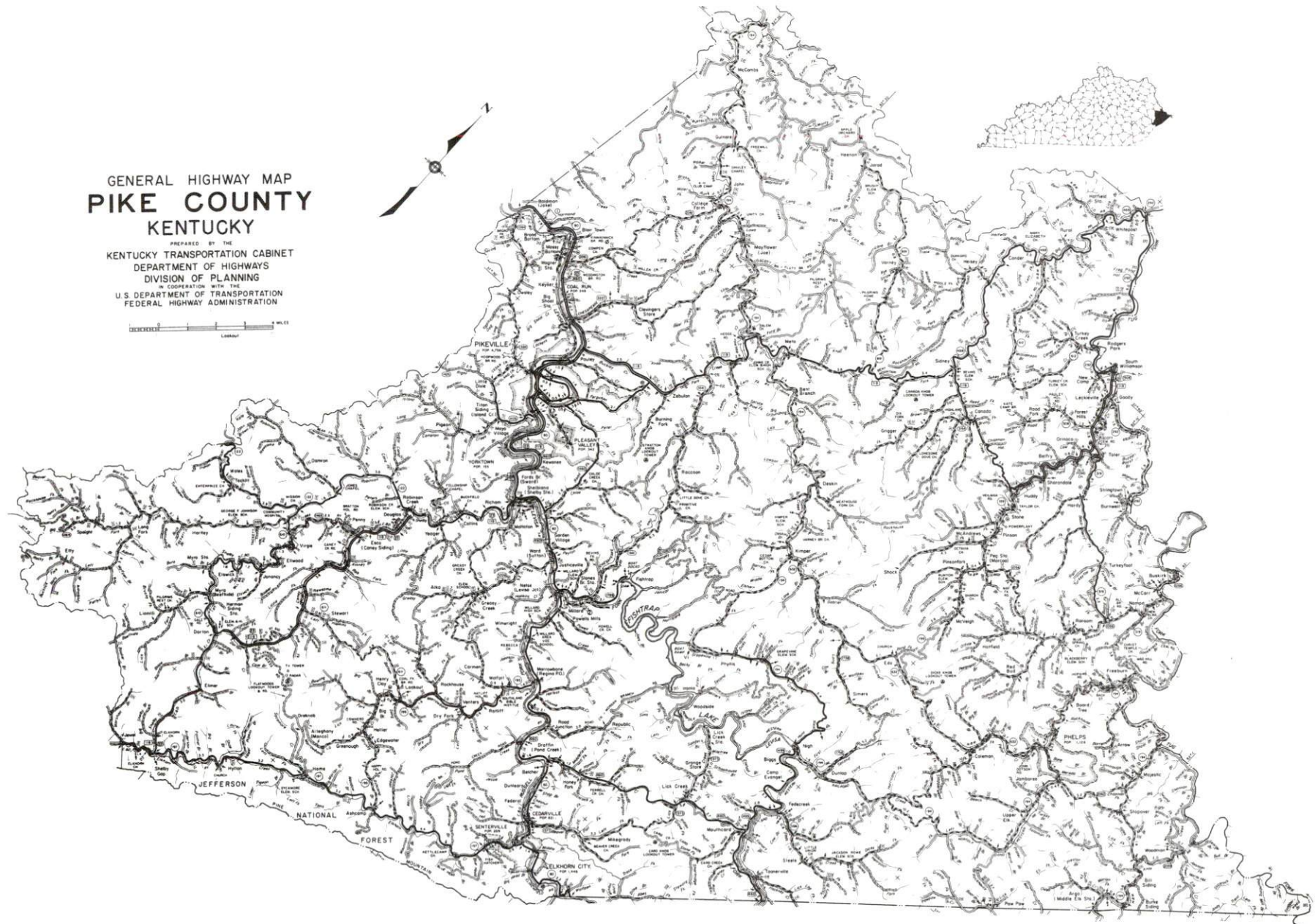
TABLE OF CONTENTS

<u>Chapter</u>	<u>Page</u>
PIKE COUNTY, KENTUCKY - A RESOURCE PROFILE	1
THE LABOR MARKET STATISTICS	2
Labor Market Area Map	2
Population	3
Population Projections	3
Estimated Labor Supply	3
Labor Force Characteristics of Residents, 1991	4
Selected Components of Nonagricultural Employment, by Place of Work, 1990	5
Per Capita Personal Income	6
Average Placement Wages	7
Average Weekly Wages of Workers Covered by Unemployment Insurance 1990 - Bar Chart	8
Average Weekly Wages by Industry, by Place of Work, 1990	9
EXISTING INDUSTRY	10
Pike County Manufacturing Firms, Their Products and Employment	10
Recent Industrial Developments	11
Labor Organizations in Manufacturing Firms	11
Selected Industrial Services	12
TRANSPORTATION	13
Highways	13
Truck Service	13
Selected Market Location Map	14
Rail	15
Air	15
UTILITIES	17
Electricity	17
Natural Gas	17
Public Water Supply	18
Sewerage	19
CLIMATE	20

<u>Chapter</u>	<u>Page</u>
LOCAL GOVERNMENT	21
Structure	21
Planning and Zoning	21
Local Fees and Licenses	21
State and Local Property Taxes	21
EDUCATION	23
Public Schools	23
Nonpublic Schools	23
Area Colleges and Universities	24
Vocational Training	25
OTHER LOCAL FACILITIES	26
Local Medical Personnel	26
Hospitals	26
Other Medical Facilities and Services	26
Banks and Savings & Loan Associations	27
Newspapers	27
Telephone Service	27
RECREATION	28
COMMUNITY IMPROVEMENTS	29

GENERAL HIGHWAY MAP
PIKE COUNTY
KENTUCKY

PREPARED BY THE
KENTUCKY TRANSPORTATION CABINET
DEPARTMENT OF HIGHWAYS
DIVISION OF PLANNING
IN COOPERATION WITH THE
U.S. DEPARTMENT OF TRANSPORTATION
FEDERAL HIGHWAY ADMINISTRATION



PIKE COUNTY, KENTUCKY - A RESOURCE PROFILE

Pike County, located at the easternmost tip of Kentucky in the Eastern Kentucky Coal Field Region, covers 785 square miles of land area. Pike County is both Kentucky's largest county and the nation's largest underground bituminous coal-producing county. The county had a 1990 population of 72,583.

Pikeville, the county seat, is located along the Levisa Fork of the Big Sandy River. The city had a 1990 population of 6,324. Pikeville is located 144 miles southeast of Lexington, Kentucky; 193 miles southeast of Cincinnati, Ohio; and 181 miles northeast of Knoxville, Tennessee.

Elkhorn City, 23 miles southeast of Pikeville on the Kentucky-Virginia border, had a 1990 population of 813 persons.

The Economic Framework - The total number of Pike County residents employed in 1991 averaged 22,853. In 1990, manufacturing firms in the county reported 339 employees; wholesale and retail trade provided 5,153 jobs; 3,595 people were employed in service occupations; state and local government accounted for 3,008 employees; and 6,014 people were employed by mining and quarrying operations.

Labor Supply - There is a current estimated labor supply of 47,582 persons available for industrial jobs in the labor market area. In addition, from 1992 through 1996, 15,611 young persons in the area will become 18 years of age and potentially available for industrial jobs.

Transportation - U.S. Highways 23, 119, and 460, and Kentucky 80 are "AAA"-rated highways serving Pikeville. The Mountain Parkway, a multi-lane highway, is located 49 miles northwest of Pikeville. Elkhorn City is located 23 miles southeast of Pikeville via Kentucky 80. Fifteen trucking companies provide interstate and/or intrastate service to Pike County. CSX Transportation provides main line rail freight service to Pikeville and Elkhorn City. The nearest scheduled commercial airline service is available at Huntington, West Virginia, 114 miles north of Pikeville. The Pikeville Regional Airport maintains both 3,600-foot and 5,000-foot paved runways.

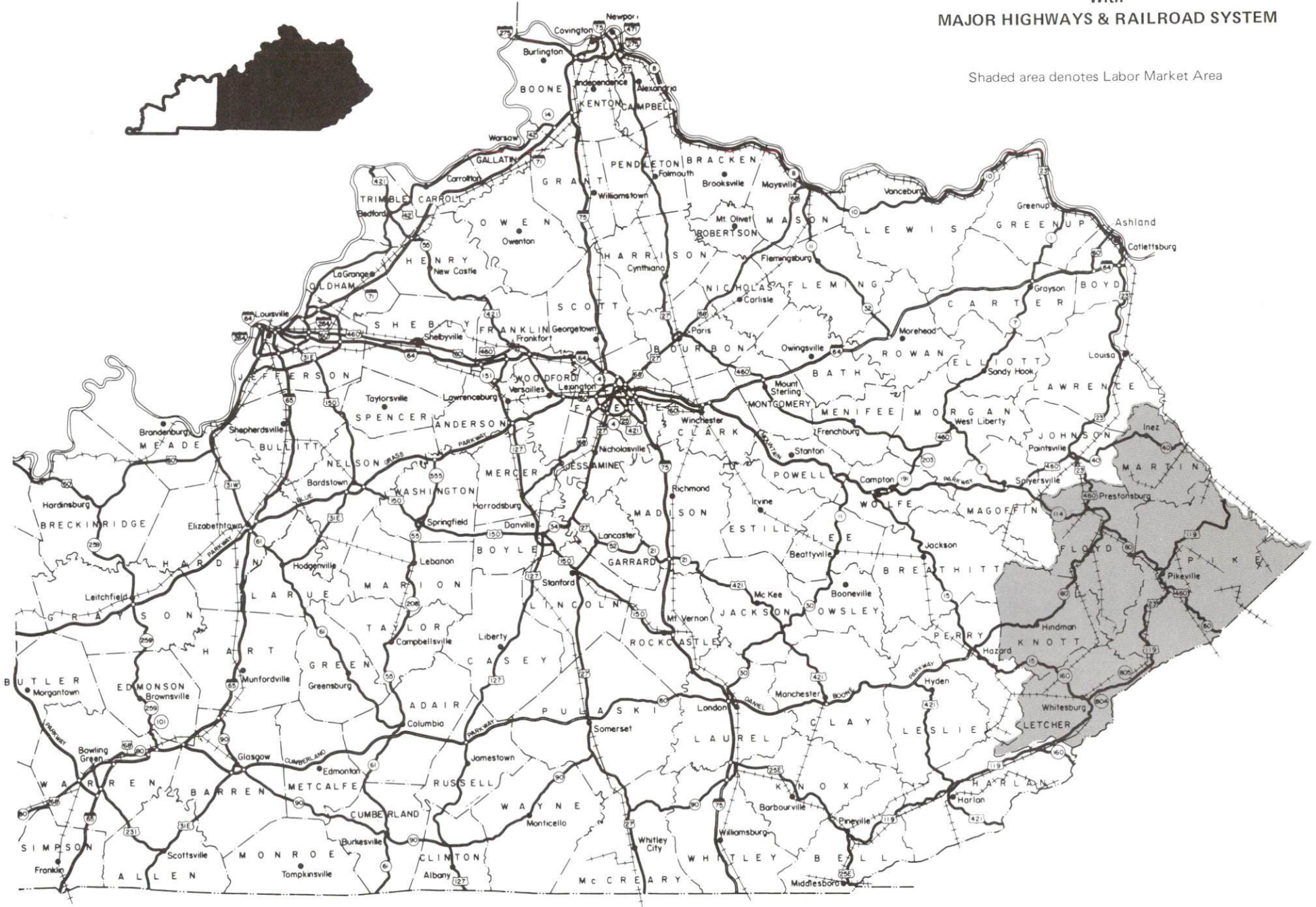
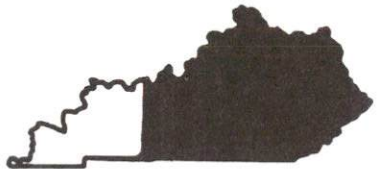
Power and Fuel - Kentucky Power Company provides electric power throughout Pike County. Natural gas service is provided to Pikeville by the City of Pikeville. In addition, seven privately owned gas companies provide natural gas service at wholesale rates to Pike County.

Wood Resources - Pike County's abundance of raw timber resources make it a natural location for manufacturers of wood products; however, most of Kentucky's timber production is sold out-of-state. The state's existing wood industry is weighted toward low value-added types of operations, while the high value-added manufacturing is performed by companies outside the state. By targeting the secondary wood industry, Pike County and Kentucky can reap the benefits of greater employment in the manufacture of high value-added wood products such as furniture and hardwood flooring.

Education - The Pikeville Independent School System and the Pike County School System provides primary and secondary education in Pike County. One private elementary school also operates in Pike County. Pikeville College is a local four-year, independent college affiliated with the Presbyterian Church. Prestonsburg Community College operates a branch campus in Pikeville. Five other institutions of higher learning are located within 70 miles of Pikeville. Twelve vocational education centers in Pike County provide training for both adults and high school students. Specialized on-site industrial training is available to new and existing industries.

PIKE COUNTY LABOR MARKET AREA With MAJOR HIGHWAYS & RAILROAD SYSTEM

Shaded area denotes Labor Market Area



LABOR MARKET STATISTICS

The Pike County Labor Market Area includes Pike County and the adjoining Kentucky counties of Floyd, Knott, Letcher, and Martin. In addition, the labor market area is supplemented by Mingo County, West Virginia; and Buchanan and Dickenson Counties, Virginia.

POPULATION			
	1990	1980	1970
Labor Market Area	173,601	192,439	144,188
Elkhorn City	813	1,446	1,081
Pikeville	6,324	5,583	5,205
Pike County	72,583	81,123	61,059

Source: U.S. Department of Commerce, Bureau of the Census, January 1991.

POPULATION PROJECTIONS				
	1995	2000	2010	2020
Labor Market Area	163,405	153,353	138,942	126,907
Pike County	67,791	63,086	55,952	49,869

Source: University of Louisville, Urban Studies Center, State Data Center.

ESTIMATED LABOR SUPPLY					
	Current				Future
	Total	Unemployed	Employed Part-Time	Not in Labor Force	Becoming 18 years of age 1992 thru 1996
Labor Market Area*	47,582	5,419	6,998	35,165	15,611
Pike County	20,848	2,357	2,845	15,646	6,540

* Additional workers may be drawn from other nearby counties.

Note: Unemployed - persons unemployed and actively seeking work; Employed Part-Time - persons employed but working only 14 to 26 weeks per year; Not in Labor Force - represents the number of persons who would enter the labor force if suitable employment were available (based on the assumption that persons in Kentucky would like to participate in the labor force in the same proportion that they do nationally).

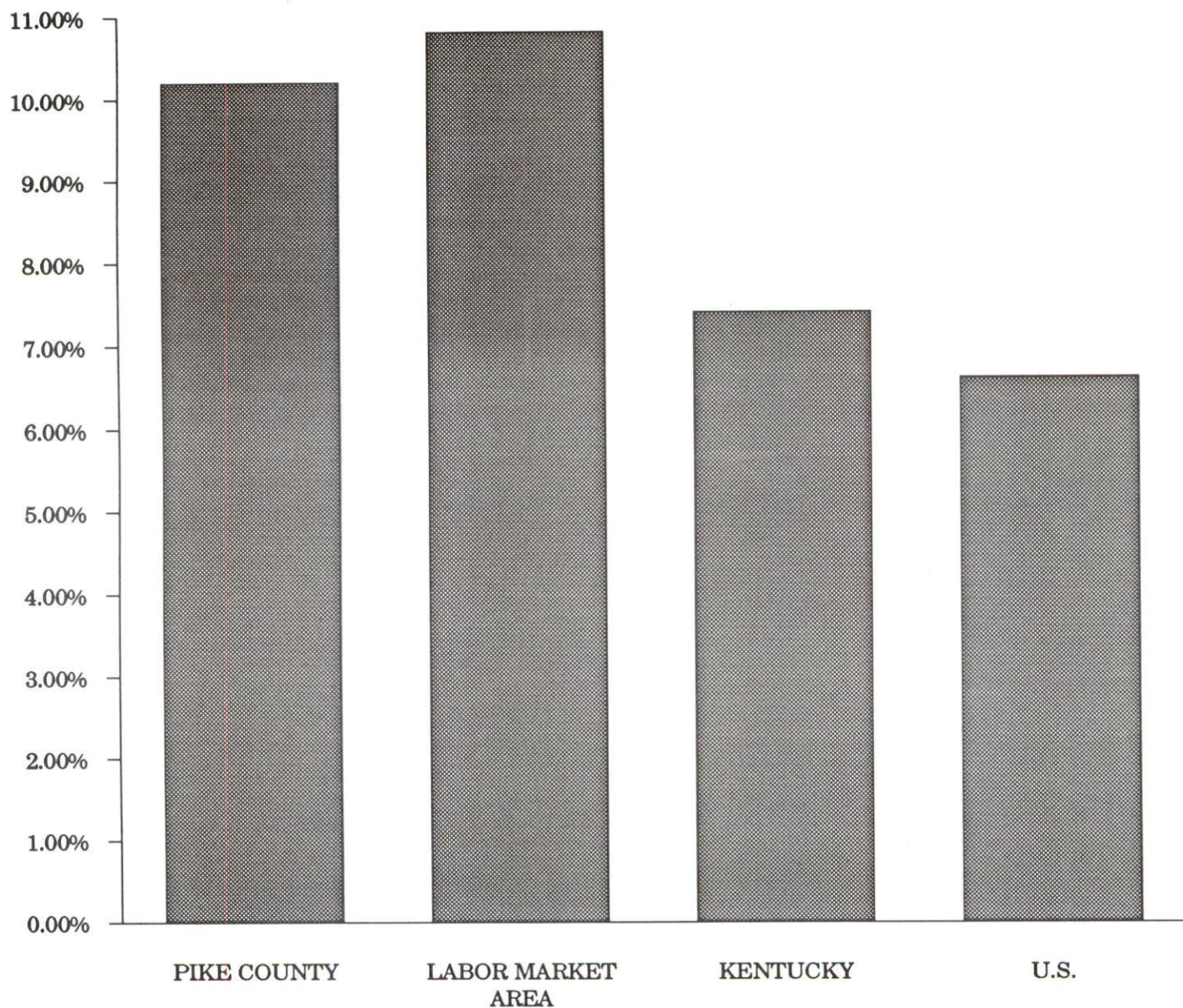
Sources: Kentucky Cabinet for Human Resources, Kentucky Labor Supply Estimates by County, 1989. Kentucky Cabinet for Economic Development, Future Labor Supply Becoming 18 Years of Age, 1992 thru 1996.

LABOR FORCE CHARACTERISTICS OF RESIDENTS, 1991

	<u>Pike County</u>	<u>Labor Market Area</u>
Civilian Labor Force	25,448	58,492
Employment	22,853	52,147
Unemployment	2,595	6,345
Rate of Unemployment (%)	10.2	10.8

Source: Kentucky Cabinet for Human Resources, Kentucky Labor Force Estimates, Annual Averages, 1991.

**UNEMPLOYMENT RATES
1991**

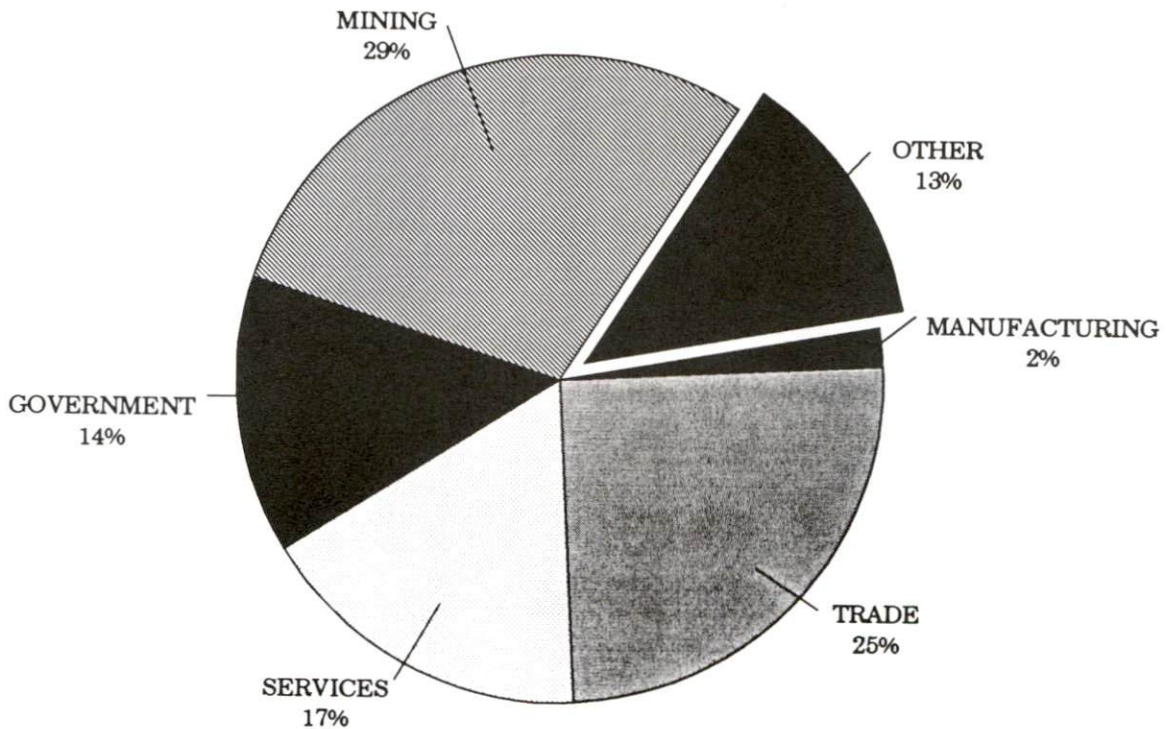


SELECTED COMPONENTS OF NONAGRICULTURAL EMPLOYMENT
BY PLACE OF WORK, 1990

	Pike County	Labor Market Area
All Industries (total)	20,789	44,259
Manufacturing	339	822
Wholesale & Retail Trade	5,153	9,945
Services	3,595	7,726
State/Local Government	3,008	7,160
Mining & Quarrying	6,014	12,609

Note: Excludes domestic workers, railway workers, certain nonprofit corporations, majority of federal government workers, and self-employed workers.
Source: Kentucky Cabinet for Human Resources, Average Monthly Workers Covered by Kentucky Unemployment Insurance Law, 1990.

PIKE COUNTY

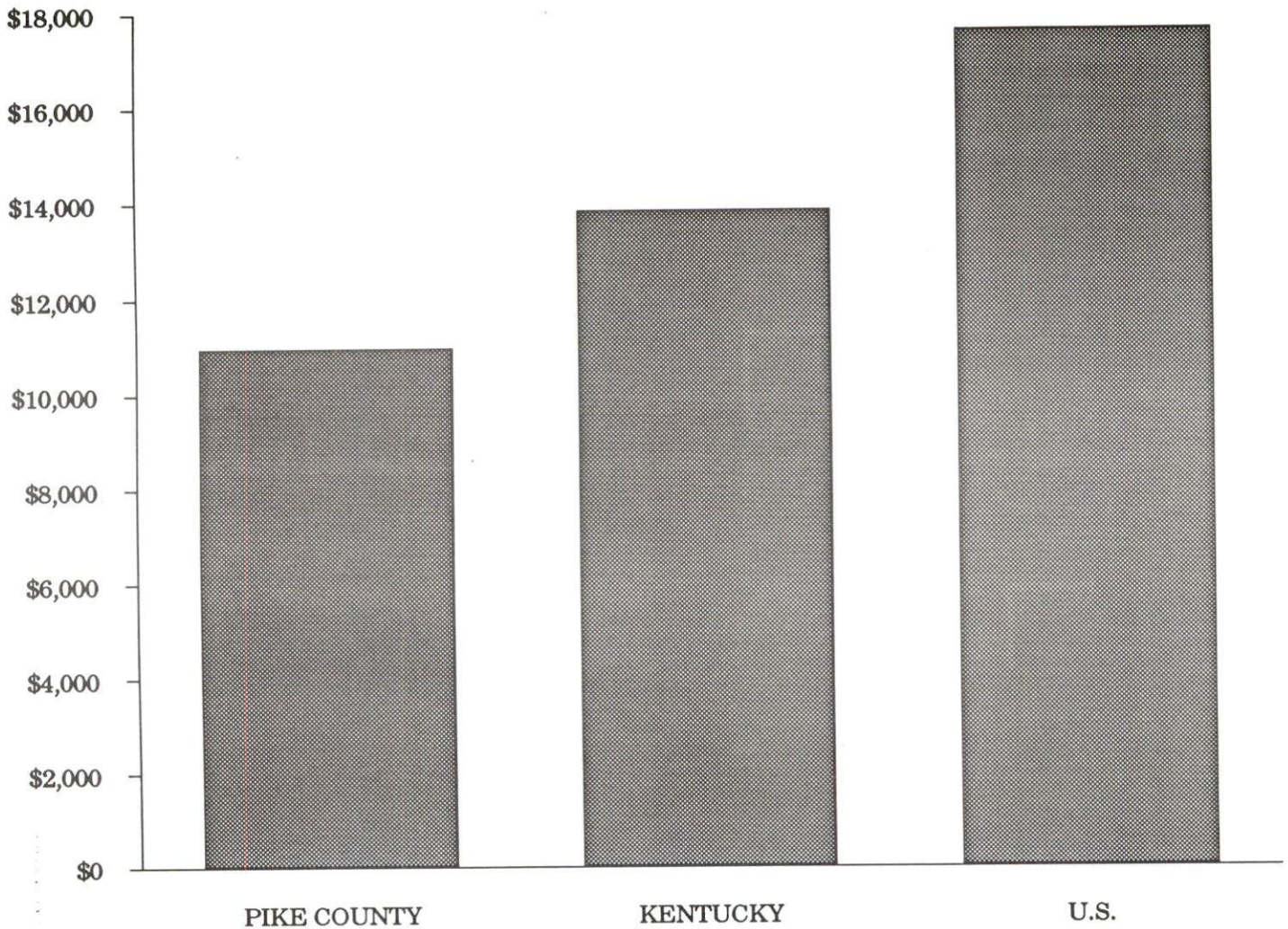


PER CAPITA PERSONAL INCOME

Area	1985	1989	Percent Change
Pike County	\$9,229	\$10,969	18.9
Labor Market Area Range	\$6,868 - \$9,759	\$8,216 - \$10,969	-
Kentucky	\$10,755	\$13,823	28.5
U.S.	\$13,899	\$17,594	26.6

Source: U.S. Bureau of Economic Analysis, Kentucky Economic Information System, April 1991.

PER CAPITA PERSONAL INCOME
1989



AVERAGE PLACEMENT WAGES

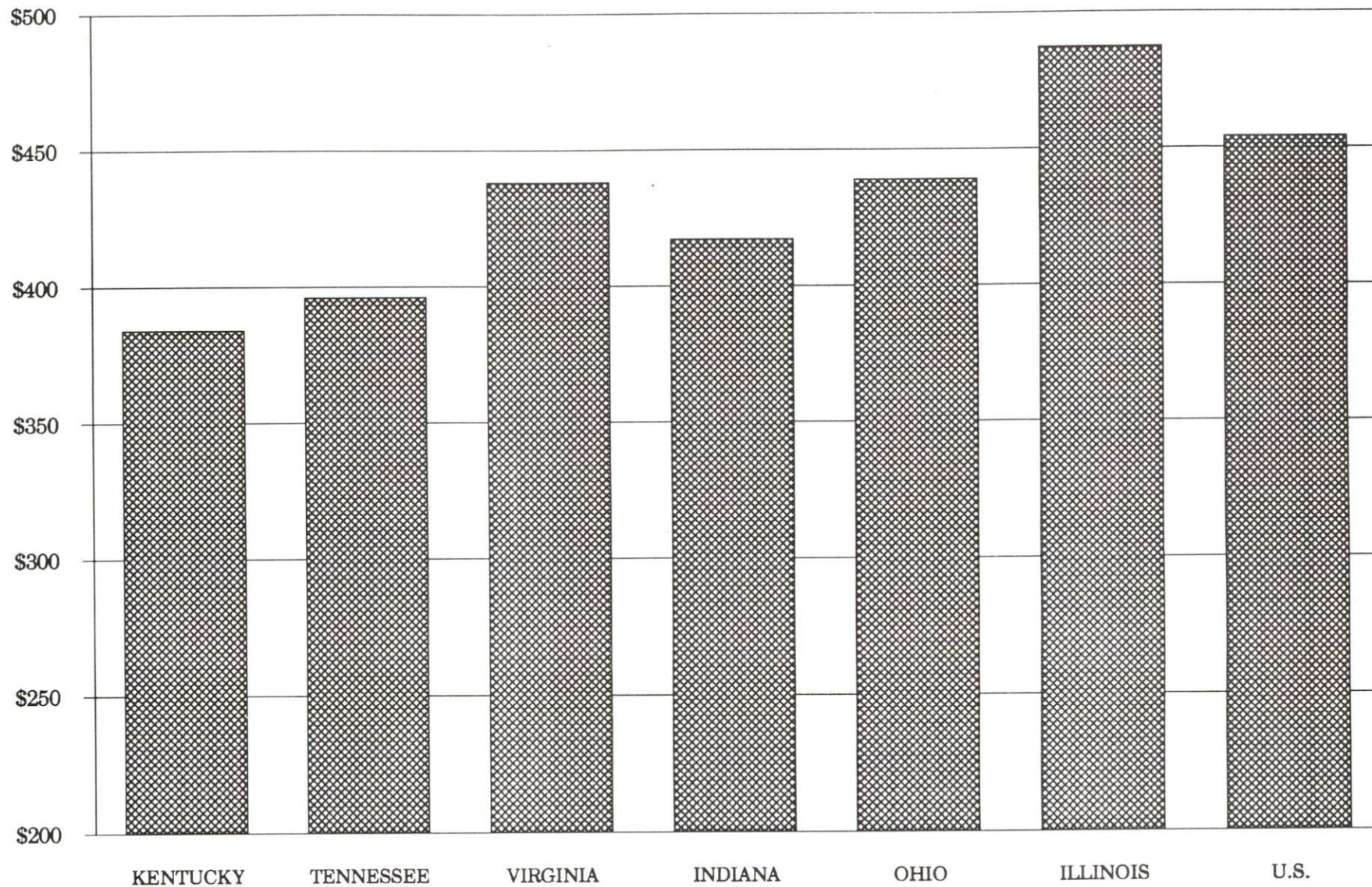
Pike County is served by the Pikeville local office of the Kentucky Department for Employment Services. The focus of the following data is on job placements made by the Pikeville local office and may therefore be used as an indicator of the wages which employers in the area pay new employees. During the twelve months which ended on June 30, 1990, the local employment office filled 1,430 job openings in various occupational categories. The average hourly wage for selected occupational categories were:

<u>OCCUPATIONAL CATEGORY</u>	<u>NUMBER OF PLACEMENTS</u>	<u>AVERAGE WAGE(\$)</u>
All Occupations	1,430	4.40
Clerical	364	4.04
Sales	96	3.76
Services (excluding domestic)	501	3.59
Agricultural, Fishery, Forestry, etc.	3	3.72
Processing	1	6.50
Machine Trades	13	7.97
Bench Work	20	3.72
Structural	95	7.16
Motor Freight/ Transportation	56	5.29
Packaging and Materials Handling	158	3.86
Other	41	9.72

The Pikeville local office serves Pike County only. The above occupational categories are taken from the Dictionary of Occupational Titles published by the U.S. Department of Labor.

Source: Kentucky Cabinet for Human Resources, Department for Employment Services.

AVERAGE WEEKLY WAGES OF WORKERS COVERED BY
UNEMPLOYMENT INSURANCE - 1990



AVERAGE WEEKLY WAGES BY INDUSTRY
BY PLACE OF WORK, 1990*

	Pike County	Kentucky (State- Wide)	Tennessee	Virginia
All Industries	\$407.56	\$379.97	\$396.00	\$438.00
Mining & Quarrying	619.97	654.24	535.00	635.00
Contract Construction	342.34	401.70	421.00	444.00
Manufacturing	391.90	496.95	449.00	487.00
Transportation, Communications & Public Utilities	452.89	500.70	523.00	575.00
Wholesale & Retail Trade	242.38	255.93	N/A	N/A
Finance, Insurance & Real Estate	389.02	434.93	469.00	508.00
Services	351.68	329.76	378.00	430.00
State/Local Government	344.75	392.28	N/A	N/A
	Indiana	Ohio	Illinois	U. S.
All Industries	\$417.00	\$439.00	\$487.00	\$454.00
Mining & Quarrying	746.00	619.00	747.00	714.00
Contract Construction	475.00	504.00	624.00	503.00
Manufacturing	561.00	595.00	590.00	555.00
Transportation, Communications & Public Utilities	519.00	553.00	610.00	578.00
Wholesale & Retail Trade	N/A	N/A	N/A	N/A
Finance, Insurance & Real Estate	442.00	478.00	619.00	571.00
Services	349.00	382.00	444.00	423.00
State/Local Government	N/A	N/A	N/A	N/A

* Wages for U.S. and surrounding states rounded to nearest dollar.

N/A Not Available.

Note: The average weekly wage for each category includes the salaries and wages of all persons working for that type business. For example, the manufacturing category includes both production workers and administrative personnel. Excludes domestic workers, railway workers, certain nonprofit corporations, majority of federal government workers, and self-employed workers.

Source: Kentucky Cabinet for Human Resources, Average Weekly Wages of Workers Covered by Kentucky Unemployment Insurance Law, 1990. U.S. Department of Labor, Bureau of Labor Statistics, Employment and Wages, Annual Averages, 1990, November 1991.

EXISTING INDUSTRY

PIKE COUNTY MANUFACTURING FIRMS, THEIR PRODUCTS AND EMPLOYMENT

<u>Firm</u> (Establishment date)	<u>Product</u>	<u>1991</u> <u>Average Employment</u>
Ashcamp		
Mother Nature Mountain Spring Water (1987)	Bottled water	6
Etty		
Coolidge Johnson Lumber Company (1957)	Lumber	9
Meta		
Mountain Top Baking Company (1990)	Cookies and crackers	400
Pikeville		
Adams Construction Corporation (1955)	Ready-mixed concrete, bituminous concrete	12
Appalachian News-Express (1920)	Newspaper	30
Damron Welding & New Steel Sales (1970)	Fabricated steel products	18
Executive Printing & Office Supply (1977)	Job printing	4
Hydroplate of Kentucky, Inc. (1983)	Hydraulic cylinders, pumps, valves, motors	10
Industrial Rubber Products Company (1976)	Rubber knee pads	18
Johnson Industries, Inc. (1981)	Engineering laser, mine personnel carriers	13
Kentucky Welding Supply, Inc. (1946)	Welding equipment assembly	4
Kris Electrical Manufacturing Company (1985)	Electrical mining equipment, battery chargers, dry type transformers	7
Mountain Enterprises, Inc. (1974)	Asphalt, crushed limestone	18
Pikeville Ready Mix (1969)	Ready-mixed concrete	23
Power Service Manufacturing Corporation (1985)	Electric mining equipment	7
Printing By George (1985)	Job printing	10

(Continued)

<u>Firm</u> <u>(Establishment date)</u>	<u>Product</u>	<u>1991</u> <u>Average Employment</u>
Robinson Creek		
Colley Block Company, Inc. (1958)	Concrete blocks	20
Virgie		
Shelby Valley Boat Works (1991)	Boats	4

Sources: Kentucky Cabinet for Economic Development, Division of Research and Planning; Pikeville-Pike County Industrial Development and Economic Authority.

RECENT INDUSTRIAL DEVELOPMENTS

Mountain Top Baking Company is in the process of constructing its fifth line and has plans for beginning its sixth line. When these baking lines are completed, employment is expected to increase by about 200 and eventually increasing the total employment to 800. Mountain Top Baking recently received an equipment grant from the Commonwealth of Kentucky in the amount of \$149,130.

Shelby Valley Boat Works began manufacturing ThunderCraft Boats in August 1991. Employment is expected to reach between 60 and 80 persons in the next three years. There are plans to construct two buildings which will tie together with an assembly line production set-up. At its peak, six styles of ThunderCraft boats could be produced at the rate of eight to ten a day.

LABOR ORGANIZATIONS IN MANUFACTURING FIRMS

Union

United Steelworkers of
America, AFL-CIO-CLC

Representing workers at:

Adams Construction Corporation;
Damron Welding & New Steel Sales;
Mountain Enterprises, Inc.

SELECTED INDUSTRIAL SERVICES

<u>Types of Services</u>	<u>Location</u>	<u>Mileage from Pikeville</u>
Custom Data Processing	Prestonsburg, Kentucky	27
Custom Plastics Producers	Ashland, Kentucky	104
Electric Motor Repair	Martin, Kentucky	27
Grinding, Precision & Tool	Huntington, West Virginia	114
Heat Treating Facilities	Richmond, Kentucky	143
	Lexington, Kentucky	144
Industrial Equipment & Supplies	Ashland, Kentucky	104
Industrial Gases	Prestonsburg, Kentucky	27
Industrial Waste Removal	Ashland, Kentucky	104
Machine Shops, Tool & Die	Pikeville, Kentucky	-
Metal Castings	Middlesboro, Kentucky	138
Metal Finishers	Richmond, Kentucky	143
	Lexington, Kentucky	144
Metal Service Centers	Pikeville, Kentucky	-
Millwrights	Stanton, Kentucky	103
Public Warehouse Facilities	Lexington, Kentucky	144

Sources: Kentucky Cabinet for Economic Development, Division of Research and Planning.

TRANSPORTATION

Highways

Pike County and Pikeville are served by an excellent transportation network including "AAA"-rated (80,000-pound gross load limit) U.S. Highways 23 and 119. U.S. 460 and Kentucky Route 80 are "AAA"-rated west of Pikeville and "AA"-rated (62,000-pound gross load limit) east of the city. Portions of U.S. 23 and 119, and Kentucky 80 are four-lane highways. The Mountain Parkway, a multi-lane limited access highway, is located 49 miles northwest of Pikeville, and provides easy access to Interstate 64, 125 miles northwest of Pikeville. Elkhorn City is located 23 miles southeast of Pikeville via Kentucky Route 80.

Another segment of U.S. 23 was recently widened to four lanes, extending from south of Pikeville to Jenkins, Kentucky. U.S. 23 is now a four-lane highway throughout Pike County.

U.S. Highway 23 extends from Michigan to Florida and is predominately four lanes throughout the system. Construction is planned to widen the entire highway to four lanes.

HIGHWAY MILES FROM PIKEVILLE, KENTUCKY, TO SELECTED MARKET CENTERS

City	Highway Miles	City	Highway Miles
Atlanta, GA	375	Los Angeles, CA	2,314
Baltimore, MD	453	Louisville, KY	218
Birmingham, AL	453	Nashville, TN	317
Chicago, IL	478	New Orleans, LA	788
Cincinnati, OH	193	New York, NY	653
Cleveland, OH	346	Pittsburgh, PA	337
Detroit, MI	411	St. Louis, MO	476
Knoxville, TN	181		

Note: Mileage computations are via the best interstate or primary highways, not necessarily the most direct route of travel.

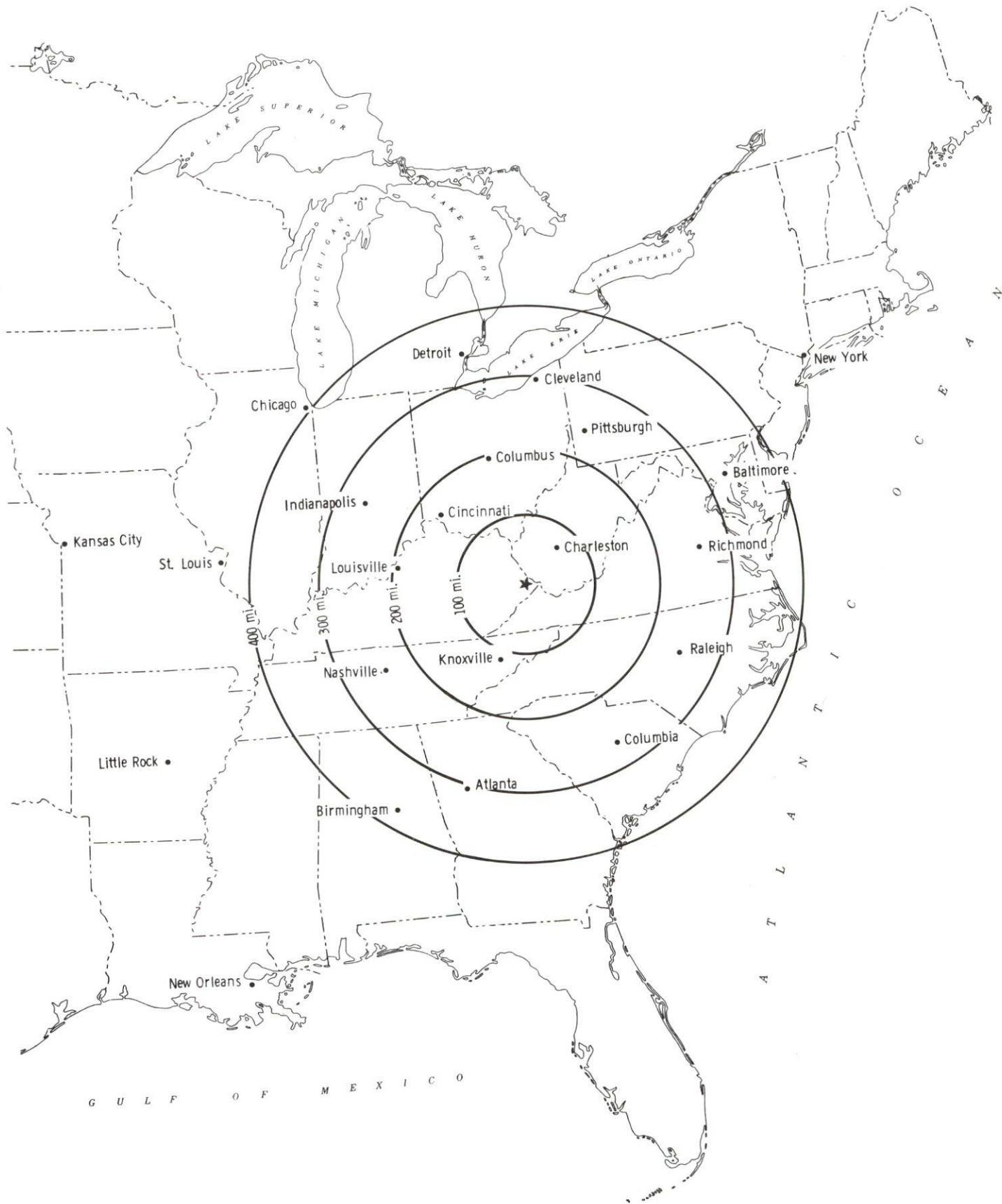
Sources: Rand McNally Deluxe Motor Carriers' Road Atlas, 1989. Official Kentucky Mileage Map, 1985.

Truck Service

Fifteen common carrier trucking companies provide interstate and/or intrastate service to Pike County.

Source: American Motor Carrier Directory, Spring 1992.

Selected Market Centers



Rail

CSX Transportation provides main line rail service to Pikeville and to Elkhorn City, 23 miles southeast of Pikeville. CSX Transportation and Southern Railway System provide the nearest piggyback facilities in Kingsport, Tennessee, 101 miles south of Pikeville. The Norfolk Southern Corporation provides rail service to numerous coal mining operations in Pike County.

For details on routing, schedules, rates, and services contact:

Manager
Industrial Development
CSX Transportation
9420 Bunsen Parkway
Suite 212
Louisville, Kentucky 40220
(502) 499-3025

Air

Local

Location: Pike County Regional Airport
6 miles north of Pikeville
Runways: 2 paved
Length: 5,000 and 3,600 feet
Traffic
Control: Wind sock
Lighting: Runway lights, VASI, sundown to sunrise
Services: 100LL and jet-A fuel; hangars and tie-downs;
flight instruction; plane rentals; FBO,
which services general aviation aircraft
Air Freight
Service: Chartered air freight services must be arranged

The Pike County Regional Airport recently constructed an additional 5,000-foot paved runway.

Nearest Scheduled Commercial Airline Service

Location: Tri-State Airport (Walker-Long Field)
3 miles southwest of Huntington, West Virginia;
114 miles north of Pikeville
Air Service: ComAir, USAir, C.C. Air, United Express
Daily Arrivals
& Departures: 48

Location: Tri-City Airport
14 miles southwest of Bristol, Tennessee;
133 miles south of Pikeville
Air Service: USAir, American Eagle, Atlantic Southeast,
ComAir, C.C. Air, Delta
Daily Arrivals
& Departures: 74

(Continued)

Location: Bluegrass Airport
4 miles west of Lexington, Kentucky;
148 miles northwest of Pikeville

Air Service: Delta, USAir, United Express, American Eagle,
ComAir, TW Express, Atlantic Southeast
Airlines, Northwest Airlin, Henson Airlines

Daily Arrivals
& Departures: 120

UTILITIES

Electricity

Company serving **Pike County** - Kentucky Power Company
Source of power - Kentucky Power Company
For industrial rates contact:

Marketing and Customer Service
Department
Kentucky Power Company
1701 Central Avenue
P.O. Box 1428
Ashland, Kentucky 41101
(606) 327-1244

and/or

Kentucky Power Company
749 North Mayo Trail
Pikeville, Kentucky 41501-8220
(606) 437-3777

Natural Gas

Company serving **Pikeville** - City of Pikeville
Source of supply - Columbia Gas Transmission Corporation and
local wells
For rates and supplies contact:

City of Pikeville
P.O. Box 1228
Pikeville, Kentucky 41502
(606) 437-5100

In addition, several other privately-owned local gas companies provide natural gas service at wholesale rates to Pike County including:

Alert Oil and Gas Company
Ashland Exploration
Case Enterprises, Inc.
CD&G Development
Interstate Natural Gas Company
Kentucky - West Virginia Gas
Kinzer Drilling Company

Public Water Supply

Company serving **Pikeville** - Professional Services Group
787 Island Creek Road
Pikeville, Kentucky 41501
(606) 437-5115

Source - Levisa Fork of the Big Sandy River
Treatment plant capacity - 6,000,000 gallons per day
Average daily consumption - 2,287,000 gallons
Peak daily consumption - 3,238,000 gallons
Storage capacity - 3,875,000 gallons
Water pressure - 30 psi to 272 psi

Professional Services Group recently completed construction of a 16-inch water transmission main through Pikeville and a 1,000,000-gallon water storage tank at a total cost of \$1,000,000.

Company serving **Elkhorn City** - Elkhorn City Water and Sewer
Department
P.O. Box 681
Elkhorn City, Kentucky 41522
(606) 754-9418

Source - Russell Fork of the Big Sandy River
Treatment plant capacity - 400,000 gallons per day
Average daily consumption - 220,300 gallons
Peak daily consumption - 276,000 gallons
Storage capacity - 200,000 gallons
Water pressure - 100 psi to 128 psi

Name of water district - Mountain Water District
P.O. Box 3157
Pikeville, Kentucky 41502-3157
(606) 631-9167

Area served - Pike County except Pikeville, Elkhorn City & Sandy Valley

Source of raw water - Levisa Fork of the Big Sandy River
Source of supply of treated water - (Maximum amount available)
City of Pikeville - 580,630 gallons per day
City of Williamson, West Virginia - 518,500 gallons per day
Sandy Valley Water District - 15,000 gallons per day
Capacity of treatment plant - 620,000 gallons per day
Average daily consumption - 1,114,130 gallons
Peak daily consumption - 1,314,130 gallons
Storage capacity - 3,914,000 gallons
Water pressure - 40 psi to 220 psi

Mountain Water District is currently reconstructing several water lines in the Dorton area and constructing new lines in various areas throughout Pike County. The Water District also plans to extend service to the Indian Creek area. These service extension projects will eventually serve 1,600+ customers at a total combined construction cost of \$8 million.

Name of water district - Sandy Valley Water District
P.O. Box 127
Betsy Layne, Kentucky 41605
(606) 478-5500

Area served - Western Pike County including Coal Run
Source of supply of treated water - (Maximum amount available)
City of Pikeville - 400,000 gallons per day
City of Prestonsburg - 150,000 gallons per day
Average daily consumption - 550,000 gallons
Peak daily consumption - 600,000 gallons
Storage capacity - 300,000 gallons
Water pressure - 50 psi to 140 psi

Sewerage

Company serving Pikeville - Professional Services Group
787 Island Creek Road
Pikeville, Kentucky 41501
(606) 437-5115

Design capacity - 2,000,000 gallons per day
Average daily flow - 800,000 gallons
Type of treatment - Secondary
Treated effluent discharged into - Levisa Fork of the Big Sandy River

Professional Services Group completely renovated its existing wastewater treatment plant which involved converting the treatment process to extended aeration and increasing the capacity from 800,000 gallons per day to 2,000,000 gallons per day. Total cost of that project was \$2.8 million.

Company serving Elkhorn City - Elkhorn City Water and Sewer
Department
P.O. Box 681
Elkhorn City, Kentucky 41522
(606) 754-9418

Design capacity - 150,000 gallons per day
Average daily flow - 45,000 gallons
Type of treatment - Primary
Treated effluent discharged into - Russell Fork of the Big Sandy River

CLIMATE

Pike County

Temperature

Normal (29-year record)	55.90 degrees
Average annual 1990	58.20 degrees
Record highest, July 1952 (45-year record)	102.00 degrees
Record lowest, January 1985 (45 year record)	-21.00 degrees
Normal heating degree days (29-year record) (Heating degree day totals are the sums of negative departures of average daily temperatures from 65 degrees F.)	4,356

Precipitation

Normal (29-year record)	41.24 inches
Mean annual snowfall (30-year record)	16.20 inches
Total precipitation 1990	44.36 inches
Mean number days precipitation (.01 inch or more) (45-year record)	133.20
Mean number days thunderstorms (47-year record)	43.10

Prevailing winds (through 1963)

Northeast

Relative Humidity (29-year record)

1 a.m.	81 percent
7 a.m.	86 percent
1 p.m.	57 percent
7 p.m.	63 percent

Source: U.S. Department of Commerce, Environmental Science Services Administration, Climatological Data, 1990. Station of record: Bristol, Johnson City, Kingsport, Tennessee.

LOCAL GOVERNMENT

Structure

The City of Pikeville is governed by a mayor, four commissioners and a full-time city manager. The mayor is elected to a four-year term, while the commissioners each serve two-year terms. Elkhorn City is governed by a mayor and six council members. The mayor is elected to a four-year term, while the council members each serve two-year terms. Pike County is governed by a county judge/executive and six magistrates. Each county official serves a four-year term.

Planning and Zoning

Joint agency - Pikeville-Pike County-Elkhorn City

Joint Planning Commission

Participating cities - Pikeville and Elkhorn City

Zoning enforced - City of Pikeville

Subdivision regulations enforced - All areas of Pike County

Mandatory state codes enforced - Kentucky Plumbing Code, National Electric Code, Kentucky Boiler Regulations and Standards, Kentucky Building Code (modeled after BOCA code)

Local Fees and License

The City of Pikeville levies a two percent occupational license tax on wages, salaries, and commissions of individuals and on net profits of businesses. The City of Pikeville also levies a contractors occupational license fee of one-half percent of all local contracts, with a minimum fee of \$10.

Elkhorn City levies a license fee on businesses, occupations, and professions in the city. These fees range from \$25 to \$150 annually for most businesses. Elkhorn City also levies a \$50 per year loading and unloading fee.

PROPERTY TAXES

The Kentucky Constitution requires the state to tax all classes of taxable property, and state statutes allow local jurisdictions to tax only a few classes. All locally taxed property is subject to county taxes and school district taxes (either a county school district or an independent school district). Property located inside of city limits may also be subject to city property taxes.

Special local taxing jurisdictions (fire protection districts, watershed districts, and sanitation districts) levy taxes within their operating areas (usually a small portion of community or county).

Property assessments in Kentucky are at 100% fair cash value. A 15% reduction is automatically granted for accounts receivable.

STATE PROPERTY TAX RATES PER \$100 VALUATION

<u>Selected Classes of Property</u>	<u>1991 State Rate</u>	<u>Local Taxation Permitted</u>
Real Estate	\$0.187	YES
Manufacturing Machinery	0.150	NO
Pollution Control Equipment	0.150	NO
Inventories		
Raw Materials	0.050	NO
Goods in Process	0.050	NO
Finished Goods	0.050	YES
Motor Vehicles	0.450	YES
Other Tangible Personal Property	0.450	YES
Intangibles (Accounts Receivable, Money on Hand)	0.250	NO

LOCAL PROPERTY TAX RATES PER \$100 VALUATION, 1991

<u>Taxing Jurisdiction</u>	<u>Real Estate</u>	<u>Finished Goods & Tangibles</u>	<u>Motor Vehicles</u>
Pike County	\$0.2110	\$0.2232	\$0.2219
School Districts:			
Pikeville Independent	0.6860	0.6860	0.7930
Pike County	0.4880	0.4880	0.4400
Cities:			
Elkhorn City	0.2000	0.2000	0.2000
Pikeville	0.1810	0.1810	0.1810

EDUCATION

Public Schools

	Pikeville Independent	Pike County
Total Enrollment (Fall, 1991)	1,407	13,550
Accreditation	Southern Association of Schools & Colleges	
Pupil-Teacher Ratio (1990-91)	17.7-1	17.6-1
Percent High School Graduates to College (1990-91)	89.7	49.9
Expenditures Per Pupil (1990-91)	\$3,648.34	\$3,119.70

Nonpublic Schools

<u>School</u>	<u>Enrollment</u>	<u>Grades</u>
St. Francis of Assisi Elementary	70	K-6

Pikeville Independent School District

The Pikeville Independent School District is highly regarded throughout the state in both academics and athletics. Currently, the Pikeville Independent School Board has committed \$850,000 toward computer technology into the curriculum over the next five years.

In 1986, the Pikeville High School Academic Team won first place in the first statewide Governor's Cup Competition and has continued to place near the top each year since. The high school's 1989 Girls State Championship Cheerleading Squad and the football team has won the Class A State Championship for the past three years. There has always been strong community involvement in all aspects of Pikeville Independent Schools.

Pike County School District

The Pike County School District is the third largest school system in Kentucky. Thirty-two schools located throughout the school district provide a community based educational program and promote parental involvement in all programs.

The Pike County School System provides a wide variety of educational programs for its students. Vocational programs are available in all eight high schools and three vocational centers. Special education students are served by sixty-one different programs. Headstart programs are available for all qualifying four-year olds. The kindergarten program serves all five-year olds on a "full day-everyday basis".

Area Colleges and Universities

<u>Name</u>	<u>Location (Miles distant)</u>	<u>Enrollment (Fall, 1991)</u>
Pikeville College	Pikeville, Kentucky	941
Prestonsburg Community College-Pikeville Campus	Pikeville, Kentucky	860
Prestonsburg Community College	Prestonsburg, Kentucky (27)	2,863
Southern West Virginia Community College	Williamson, West Virginia (32)	3,238
Clinch Valley College of the University of Virginia	Wise, Virginia (48)	1,354
Alice Lloyd College	Pippa Passes, Kentucky (58)	548
Hazard Community College	Hazard, Kentucky (69)	1,429

Pikeville College

Pikeville College is a four-year, independent, co-educational college affiliated with the Presbyterian Church. The institution is a liberal arts college offering courses leading to the degrees of Bachelor of Arts, Bachelor of Science, and Bachelor of Business Administration. Associate degrees are offered in Nursing and Business. Through the Appalachian Graduate Consortium, Morehead State University offers a Masters degree in Education and other graduate level courses on the Pikeville College Campus.

Prestonsburg Community College - Pikeville Campus

Prestonsburg Community College in Pikeville, is a branch of the University of Kentucky. This two-year college offers associate degrees in Nursing, Accounting, Secretarial Science, and Early Childhood Education and also offers pre-requisites to those students who plan to attend a four year college and obtain a bachelor's degree.

Vocational Training

Vocational training is available at both the state vocational-technical schools and the area vocational education centers. The state vocational-technical schools are post-secondary institutions. The area vocational education centers are designed to supplement the curriculum of high school students. Both the state vocational-technical schools and the area vocational education centers offer evening courses to enable working adults to upgrade current job skills.

Arrangements can be made to provide training in the specific production skills required by an industrial plant. Instruction may be conducted either in the vocational school or in the industrial plant, depending upon the desired arrangement and the availability of special equipment.

Bluegrass State Skills Corporation

The Bluegrass State Skills Corporation, an independent public corporation created and funded by the Kentucky General Assembly, provides programs of skills training to meet the needs of business and industry from entry level to advanced training, and from upgrading present employees to retraining experienced workers.

The Bluegrass State Skills Corporation is the primary source for skills training assistance for a new or existing company. The Corporation works in partnership with other employment and job training resources and programs, as well as Kentucky's economic development activities, to package a program customized to meet the specific needs of a company.

<u>Vocational School</u>	<u>Location (Miles distant)</u>	<u>Cumulative Enrollment 1990-1991</u>
Mayo State Vocational- Technical School	Prestonsburg, Kentucky (40)	936
Millard Area Vocational Education Center	Millard, Kentucky (13)	247
Belfry Area Vocational Education Center	Belfry, Kentucky (28)	207
Phelps Area Vocational Education Center	Phelps, Kentucky (35)	180

Construction is planned for a new area vocational education center in Robinson Creek, 13 miles south of Pikeville.

OTHER LOCAL FACILITIES

Local Medical Personnel

Physicians - 90
Dentists - 36

Hospitals

<u>General Hospitals</u>	<u>Location</u>	<u>Beds</u>
The Methodist Hospital of Kentucky	Pikeville	221
Williamson Appalachian Regional Hospital	South Williamson, 31 miles northeast of Pikeville	193

The Methodist Hospital of Kentucky

Medical staff - 101 physicians, 145 registered nurses, and
112 licensed practical nurses

Pikeville Methodist Hospital is the top private sector employer in Pike County with 750 employees. Some of its recent endeavors to provide state-of-the-art medical care to patients include the opening of a Breast Care Center, establishment of the region's only Level II Neonatal Intensive Care Unit as well as the purchase of a neonatal transport van. An additional wing to the hospital was constructed to expand and improve the hospital's emergency services. The hospital is presently involved in a \$3,000,000 addition which will include radiation and a medical oncology unit, a new emergency room, an ambulatory surgery center and a pediatric urgent care center.

Williamson Appalachian Regional Hospital

Medical staff - 58 physicians, 47 registered nurses, and 55 licensed
practical nurses

Other Medical Facilities and Services

Mountain Comprehensive Care Center
Pike County Health Department
Marrowbone Health Clinic
Phelps Clinic
Pikeville Pediatric Clinic
Accu-Med Ambulance Service (Pikeville)
Ambu-Care Ambulance (Pikeville)
Elkhorn City Area Ambulance Service
Med-Tech Ambulance (Pikeville)
Shelby Valley Ambulance Service, Inc.

Banks and Savings & Loan Associations

The Citizens Bank of Pikeville
Family Federal Savings Bank
The First National Bank of Pikeville
The Josephine Bank
Pikeville National Corporation and its
subsidiaries (Pikeville National Bank
and Trust Company and the First Security
Bank and Trust Company)

Newspapers

Appalachian News-Express (three times weekly)

Telephone Service

South Central Bell

RECREATION

Pike County is in the center of Kentucky's mountain vacationland and is surrounded by some of the most majestic scenery in the eastern United States.

Public recreational facilities in Pikeville include the 15-acre Bob Amos Park, offering ball fields, tennis courts, a track, a football field, a golf driving range, mini-golf, a horseshow ring, picnic areas, a scenic overlook and walking trails. Construction of an outdoor theatre is proposed in Pikeville. The Hambley Recreational Facility (a youth center) features a tennis court, a year-round swimming pool, Little League ball fields, a football field, and a mini-park. The Pikeville City Park offers basketball goals, a playground, and tennis courts. In addition, several mini-parks are located in Pikeville. The Fourth Street Community Recreation Center provides a gymnasium.

Public recreational facilities in Pike County include the city park in Elkhorn City, which offers a playground, a Little League ball field, and a swimming pool. Two tennis courts are located at the local school. Swimming pools are also located in Virgie, Phelps, and Blackberry. Mountain Pub-Links is a nine-hole public golf course located in John's Creek.

Private recreational facilities in Pike County include two country clubs with a golf course and swimming pools, a YMCA facility, a bowling alley, roller rinks, and seven movie theatres.

The Augusta Dils York "Creekmore" Mansion, located on a hill overlooking downtown Pikeville, was home to Augusta Dils York, a prominent woman of Pikeville. This circa 1912 mansion features period furniture, antiques, china, and many other artifacts from the mid-1800s and early 1900s. Tours are offered by appointment. A gift shop is also available.

Annual events in Pike County include Pikeville's Fourth of July Festival, featuring a fireworks display, and the Christmas Parade. The internationally renowned Hillbilly Days, also held in Pikeville, features costume contests, food booths, games, bluegrass and country music, and a parade. The annual Pike Area Coal Exposition, one of the largest coal expositions in the country, is held in Pikeville. Ocktoberfest is held annually each fall. The Apple Blossom Festival is held each year in Elkhorn City.

Fishtrap Lake, seven miles southeast of Pikeville, contains 1,131 acres of excellent boating and fishing. The lake extends about 18 1/2 miles up the Levisa Fork of the Big Sandy River.

Breaks Interstate Park, near Elkhorn City on the Kentucky-Virginia border, is a unique park sponsored by Kentucky and Virginia which is situated on the rim of the largest river canyon east of the Mississippi. The canyon is a five-mile cut with 1,600-foot palisades on either side. Sometimes called the "Grand Canyon of the South" this park offers 4,600 acres of breathtaking scenery. The "Breaks" is a full-facility resort park with a 36-room lodge, cottages, a restaurant, a swimming pool, camping facilities, fishing, whitewater rafting, and a visitors center.

Jenny Wiley State Resort Park, 29 miles northwest of Pikeville near Prestonsburg, takes full advantage of its picturesque highland setting. The 1,700-acre park offers facilities and activities such as a 49-room lodge, a dining room, a gift shop, 17 cottages, a lodge pool, sky lift, recreation rooms, campsites, picnic areas, planned recreation, playground, golf, hiking, horseback riding, miniature golf, shuffleboard, fishing, and fishing boat and pedal boat rentals. Also located at the park is the Jenny Wiley Summer Music Theatre, which features four outdoor productions including Broadway musicals and the "Jenny Wiley Story".

COMMUNITY IMPROVEMENTS

Pikeville re-certified as a "Kentucky Certified City" in 1991, and is distinguished as a silver award winner recognizing four consecutive years of certification. Re-certification is based on achievement in the following areas: existing industry assistance, small business assistance, educational resources, and community development factors of health care, public safety, arts and culture, recreation, governmental awareness and resources. The Certified Cities Program is sponsored by the Kentucky Chamber of Commerce.

Commercial and Industrial Development

Pikeville-Pike County Industrial Development and Economic Authority "IDEA" is a not-for-profit organization which was created in 1988. The primary purpose of this authority is to bring new industry to Pike County for the creation of jobs, as well as to assist in the expansion and retention of existing business and industry. This organization is responsible for bringing Mountain Top Baking to Pike County which now employs 400 people with the capacity to employ 800 when all its lines are in operation. The Pikeville-Pike County IDEA also proceeded with the development of the first industrial park in this region, the full-service 43-acre Pikeville-Pike County Industrial Park. The authority is assisting the community in diversifying its local industrial base in order to develop and sustain a vital, growing economy with a steady and reliable tax base.

Mountain Top Baking Company is in the process of constructing its fifth line and has plans for beginning its sixth line. When these baking lines are completed, employment is expected to increase by about 200 and eventually increasing the total employment to 800. Mountain Top Baking recently received an equipment grant from the Commonwealth of Kentucky in the amount of \$149,130.

Shelby Valley Boat Works began manufacturing ThunderCraft Boats in August 1991. Employment is expected to reach between 60 and 80 persons in the next three years. There are plans to construct two buildings which will tie together with an assembly line production set-up. At its peak, six styles of ThunderCraft boats could be produced at the rate of eight to ten a day.

Transportation

Another segment of U.S. 23 was recently widened to four lanes, extending from south of Pikeville to Jenkins, Kentucky. U.S. 23 is now a four-lane highway throughout Pike County.

The Pike County Regional Airport recently constructed an additional 5,000-foot paved runway.

Utilities

Professional Services Group, which provides water and sewer service to Pikeville, recently completed construction of a 16-inch water transmission main through Pikeville and a 1,000,000-gallon water storage tank at a total cost of \$1,000,000. The company also completely renovated its existing wastewater treatment plant which involved converting the treatment process to extended aeration and increasing the capacity from 800,000 gallons per day to 2,000,000 gallons per day. Total cost of that project was \$2.8 million.

Mountain Water District is currently reconstructing several water lines in the Dorton area and constructing new lines in various areas throughout Pike County. The Water District also plans to extend service to the Indian Creek area. These service extension projects will eventually serve 1,600+ customers at a total combined construction cost of \$8 million.

The Elkhorn City Water and Sewer Department is in the process of extending sewer service to the Looney Addition in Elkhorn City and plans to provide water and sewer service to the Senterville area.

Education

Construction is planned for a new area vocational education center in Robinson Creek, 13 miles south of Pikeville.

Prestonburg Community College-Pikeville Campus recently opened in Pikeville. The University of Kentucky branch campus offers a full array of preparatory courses for a four-year institution and varied associate degrees.

Community Development

Pikeville Methodist Hospital is the top private sector employer in Pike County with 750 employees. Some of its recent endeavors to provide state-of-the-art medical care to its patients include the opening of a Breast Care Center, establishment of a Level II Neonatal Intensive Care Unit as well as the purchase of a neonatal transport van. An additional wing to the hospital was constructed to expand and improve the hospital's emergency services. The hospital is presently involved in a \$3 million addition which will include radiation and a medical oncology unit, a new emergency room, an ambulatory surgery center and a pediatric urgent care center.

The new Pike County Health Department which opened its doors in October 1991, is a two-story facility complete with underground parking. The \$1.9 million structure has approximately 20,000 square feet, which doubles the size of the former county health department. The agency offers programs to county residents including the Women, Infants, and Children (WIC) program, family planning, prenatal clinics, TB testing, and immunization services. The facility employs 39 and offers a wide range of services.

Mountain Pub-Links, a new nine-hole public golf course located in John's Creek, was recently developed at a cost of \$1 million.

Development of the "911" emergency communications system is under way in Pikeville and Pike County. The program is scheduled for implementation by August 1992.