

1975

Industrial Resources: Pulaski County - Somerset and Burnside

Kentucky Library Research Collections
Western Kentucky University, spcol@wku.edu

Follow this and additional works at: https://digitalcommons.wku.edu/pulaski_cty

 Part of the [Business Administration, Management, and Operations Commons](#), [Growth and Development Commons](#), and the [Infrastructure Commons](#)

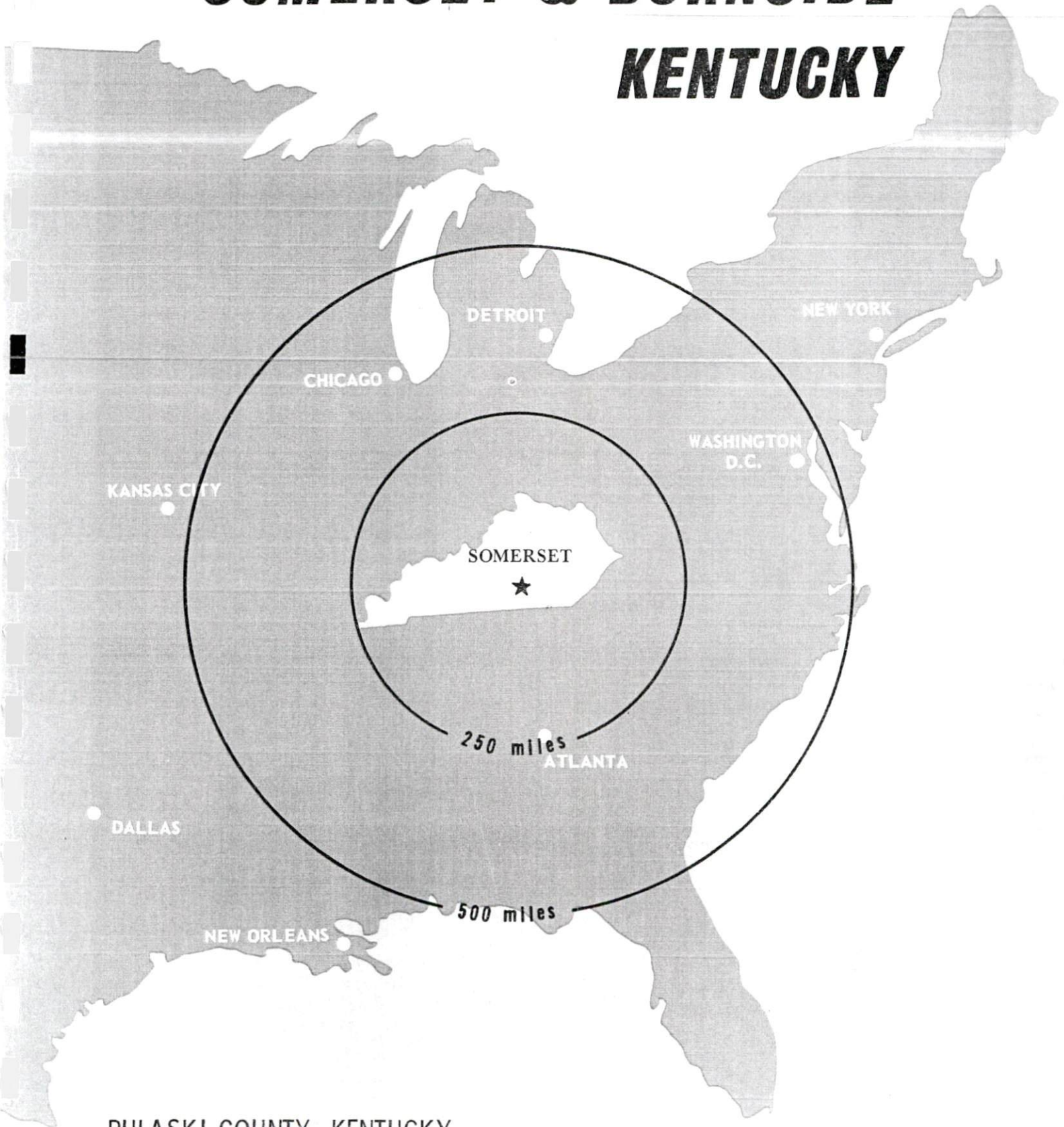
Recommended Citation

Kentucky Library Research Collections, "Industrial Resources: Pulaski County - Somerset and Burnside" (1975). *Pulaski County*. Paper 27.
https://digitalcommons.wku.edu/pulaski_cty/27

This Report is brought to you for free and open access by TopSCHOLAR®. It has been accepted for inclusion in Pulaski County by an authorized administrator of TopSCHOLAR®. For more information, please contact topscholar@wku.edu.

INDUSTRIAL RESOURCES

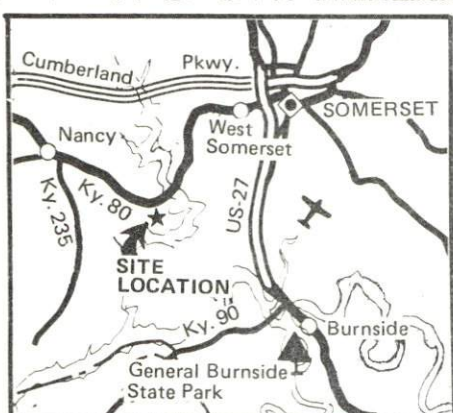
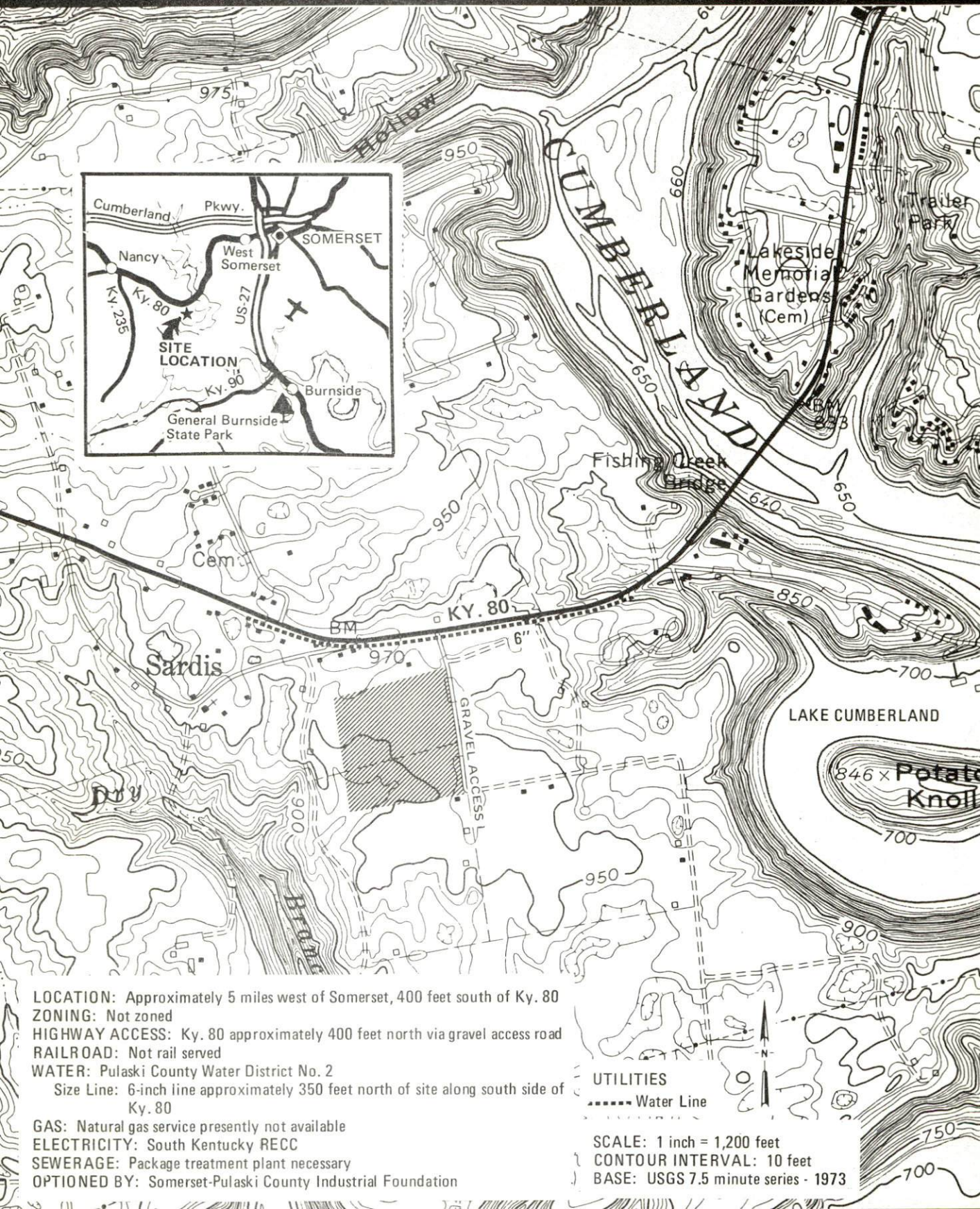
SOMERSET & BURNSIDE KENTUCKY



PULASKI COUNTY, KENTUCKY

SOMERSET, KENTUCKY --- Site No. 175 -- 25 Acres

For more information contact Mr. James Bowles, South Kentucky RECC, Post Office Box 910, Somerset, Kentucky 42501 or the Industrial Development Division, Kentucky Department of Commerce, Capital Plaza Tower, Frankfort, Kentucky 40601.



LOCATION: Approximately 5 miles west of Somerset, 400 feet south of Ky. 80
ZONING: Not zoned
HIGHWAY ACCESS: Ky. 80 approximately 400 feet north via gravel access road
RAILROAD: Not rail served
WATER: Pulaski County Water District No. 2
 Size Line: 6-inch line approximately 350 feet north of site along south side of Ky. 80
GAS: Natural gas service presently not available
ELECTRICITY: South Kentucky RECC
SEWERAGE: Package treatment plant necessary
OPTIONED BY: Somerset-Pulaski County Industrial Foundation

UTILITIES
 ----- Water Line
SCALE: 1 inch = 1,200 feet
CONTOUR INTERVAL: 10 feet
BASE: USGS 7.5 minute series - 1973

INDUSTRIAL RESOURCES
SOMERSET AND BURNSIDE, KENTUCKY

Prepared by
The Kentucky Department of Commerce
in cooperation with
The Somerset-Pulaski County Chamber of Commerce
and
The Burnside Area Chamber of Commerce

1975

TABLE OF CONTENTS

| <u>Chapter</u> | <u>Page</u> |
|---|-------------|
| INDUSTRIAL SITES | i |
| SOMERSET AND BURNSIDE, KENTUCKY - A RESOURCE PROFILE | i |
| THE LABOR MARKET. | 1 |
| Population Trends | 8 |
| General Employment Characteristics, 1973 | 8 |
| Manufacturing Employment Trends by Industry | 9 |
| Major Somerset and Burnside Manufacturing Firms, Their Products and Employment | 10 |
| Wages. | 14 |
| Labor Organizations | 15 |
| Estimated Male Labor Supply | 16 |
| Estimated Female Labor Supply | 16 |
| Per Capita Personal Income. | 17 |
| TRANSPORTATION | 18 |
| Rail | 18 |
| Truck Service | 18 |
| Air | 19 |
| Water. | 20 |
| Bus. | 20 |
| Taxi | 20 |
| Rental Services | 20 |
| POWER AND FUEL. | 21 |
| Electricity | 21 |
| Natural Gas | 21 |
| Other Fuels | 23 |
| WATER AND SEWERAGE | 24 |
| Water. | 24 |
| Sewerage | 29 |
| LOCAL GOVERNMENT | 30 |
| City. | 30 |
| County | 30 |

| <u>Chapter</u> | <u>Page</u> |
|--|-------------|
| Assessed Value of Property, 1974 | 30 |
| Property Taxes | 31 |
| Local Property Tax Rate Per \$100 of Assessed Valuation, 1974 | 31 |
| Utilities Gross Receipts Tax for Schools | 31 |
| Planning and Zoning | 32 |
| Safety | 32 |
| Police | 32 |
| Fire | 32 |
| Rescue Service | 33 |
| Sanitation | 33 |
| EDUCATION | 34 |
| Public Schools | 34 |
| Nonpublic Schools | 34 |
| Vocational Schools | 35 |
| Colleges and Universities | 35 |
| HEALTH | 37 |
| Hospitals | 37 |
| Other Medical Facilities | 37 |
| Ambulance Service | 39 |
| Nursing Homes | 39 |
| Public Health | 39 |
| OTHER LOCAL FACILITIES | 40 |
| Communications | 40 |
| Library Services | 42 |
| Religious Institutions | 42 |
| Financial Institutions | 43 |
| Accommodations | 43 |
| Clubs and Organizations | 43 |
| RECREATION | 45 |
| Local | 45 |
| Area | 45 |
| AGRICULTURE - NATURAL RESOURCES, - CLIMATE | 47 |
| Agriculture | 47 |
| Natural Resources | 47 |
| Climate | 48 |
| HISTORY | 49 |

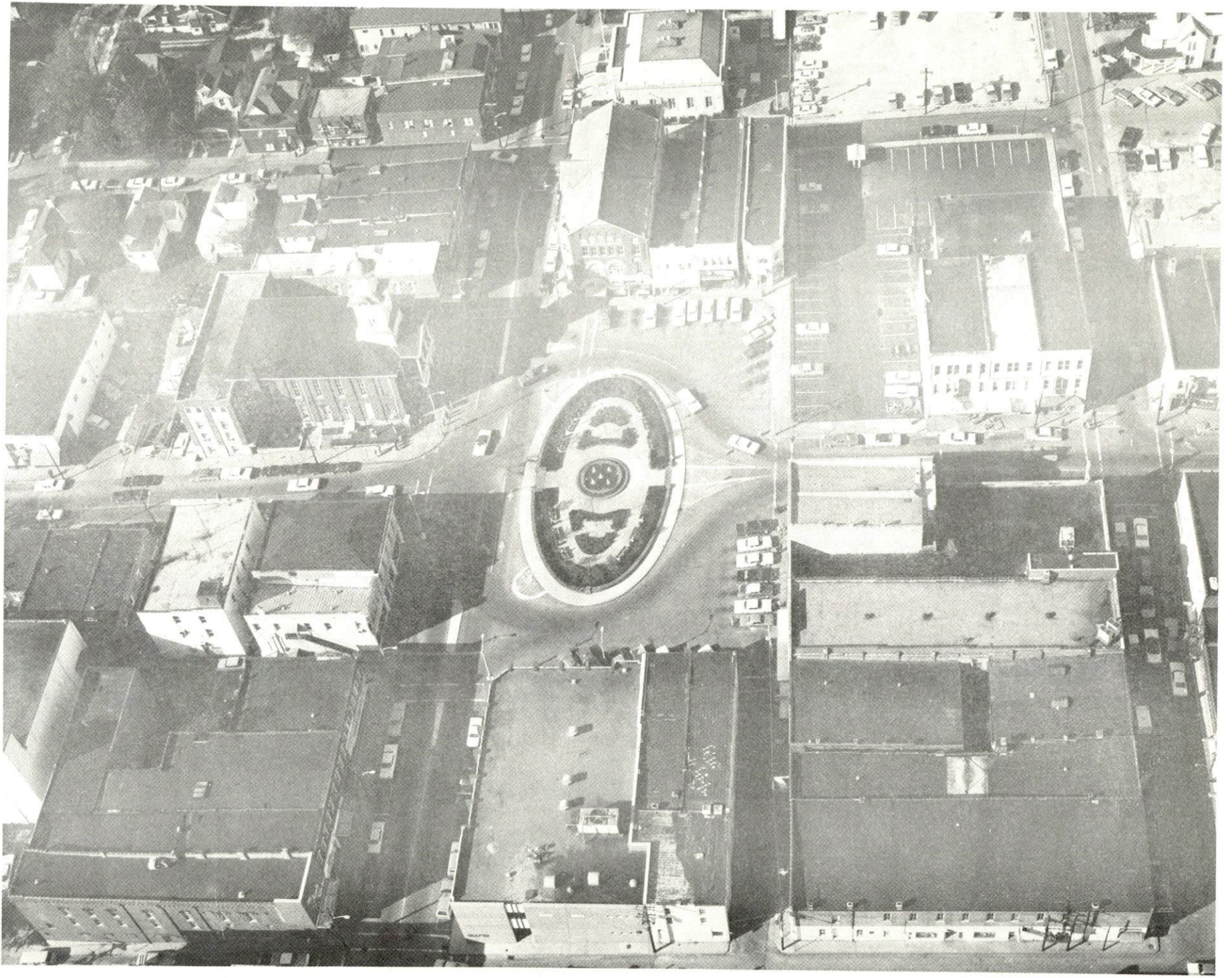


GENERAL HIGHWAY MAP
PULASKI COUNTY
KENTUCKY

PREPARED BY THE
KENTUCKY DEPARTMENT OF TRANSPORTATION
BUREAU OF HIGHWAYS
DIVISION OF PLANNING
IN COOPERATION WITH THE
U.S. DEPARTMENT OF TRANSPORTATION
FEDERAL HIGHWAY ADMINISTRATION

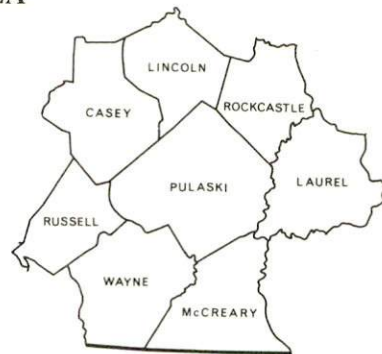


| ORIGINAL DATA | DATE | BY |
|---------------|------|----|
| REVISED | | |
| DATE | | |
| BY | | |
| DATE | | |
| BY | | |
| DATE | | |
| BY | | |

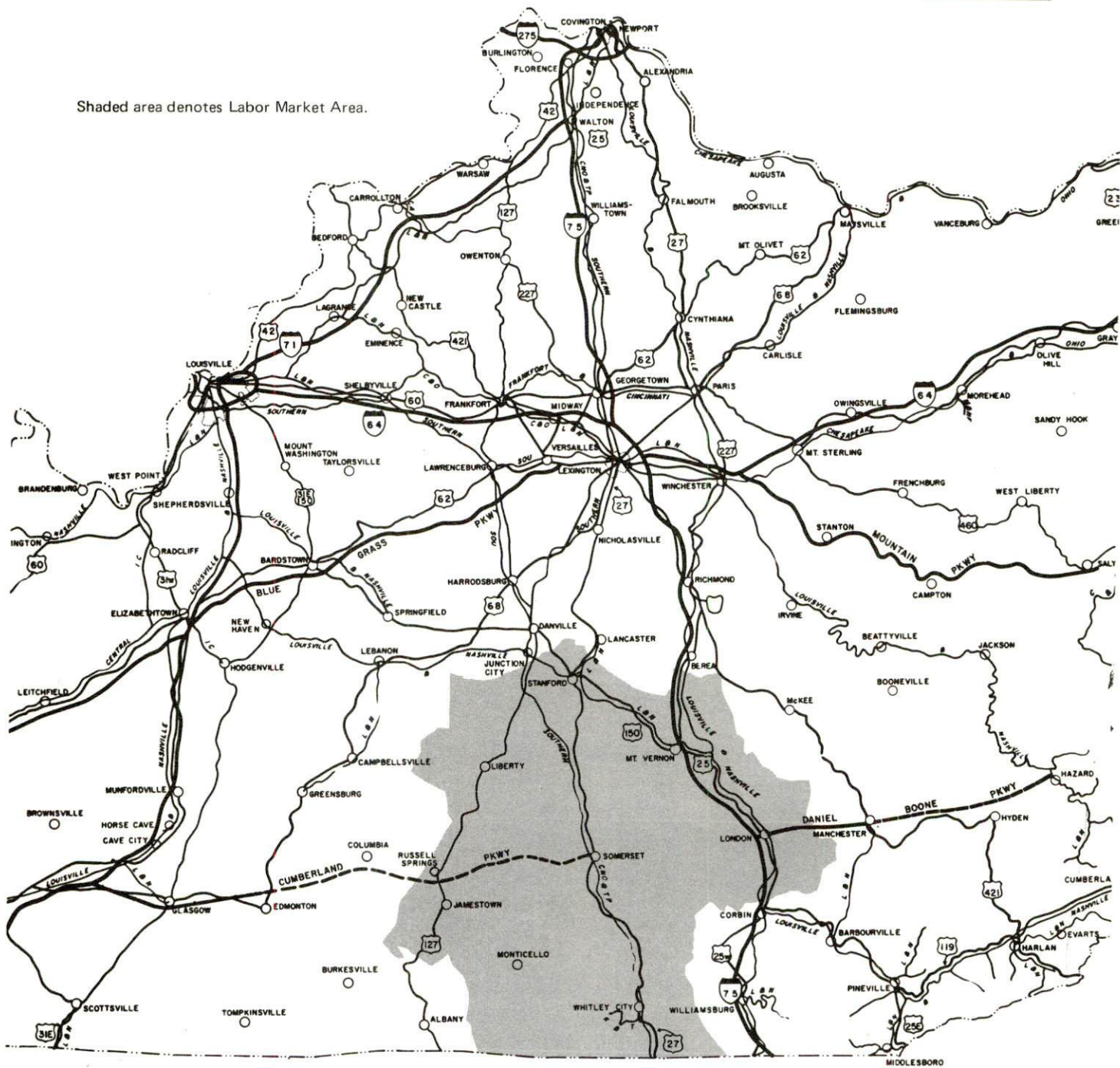


AERIAL VIEW OF SOMERSET, KENTUCKY

SOMERSET & BURNSIDE LABOR MARKET AREA



Shaded area denotes Labor Market Area.



SOMERSET AND BURNSIDE, KENTUCKY - A RESOURCE PROFILE

Somerset, the county seat of Pulaski County and a 1974 All Kentucky City, is located in south central Kentucky near Lake Cumberland. It is 106 miles south of Lexington, Kentucky, 130 miles southeast of Louisville, Kentucky, 131 miles northwest of Knoxville, Tennessee, and 187 miles south of Cincinnati, Ohio. Somerset had a 1970 population of 10,436 and is the largest city in the Lake Cumberland area.

Burnside, 8 miles south of Somerset at Lake Cumberland, had a population of 586 in 1970.

Pulaski County, covering a land area of 653 square miles, is the third largest county in Kentucky geographically. In 1970, the county had a population of 35,234.

The Economic Framework

Total employment in Pulaski County in 1973 averaged 15,360 with agriculture providing 1,790 jobs, manufacturing 3,560, trade and services 3,840 and government 1,780. Since 1964, manufacturing employment has increased nearly 140 percent, or 1,918 new jobs. Major industrial products are compressors for air conditioners, automobile seat frames, automobile seat assemblies, and men's coats.

Per capita income in the county in 1972 was \$2,778. Between 1962 and 1972, per capita personal income in the county increased nearly 143 percent.

The Somerset-Burnside labor market area includes Pulaski and the seven adjoining counties. In 1973 employment in the labor market area totaled 50,150 jobs with agriculture providing 8,110, manufacturing 9,540, trade and services 9,320, and government 7,010. Since 1964 industrial employment has increased nearly 154 percent or 6,040 new jobs with sharpest gains in the apparel industry. Significant growth also occurred in the paper, food and kindred products, textile, lumber, furniture, and nonelectrical machinery industries.

Despite important industrial gains in recent years, the area still has a deficit of 4,795 manufacturing jobs when measured against the national industrial employment-population ratio for 1973. This indicates an area with a potential for additional manufacturing production.

Resources for Growth

1. There is a current estimated labor supply of 8,730 men and 10,090 women available for industrial jobs in the labor market area. In addition, 7,470 young men and 7,050 young women will become 18 years of age before 1981 and will be potentially available for work.

2. The local transportation capability is good. The Southern Railway System provides Somerset and Burnside with a variety of services. Highway access to Somerset and Burnside is provided by U. S. 27. Kentucky Route 80 and the Cumberland Parkway connect Somerset with Interstate 65 just north of Bowling Green. Interstate 75 is 33 miles east of Somerset by way of Kentucky Route 80. Seven truck lines serve the Somerset-Burnside area. The Somerset-Pulaski County Airport provides service for small aircraft, and commercial air service is available in London, 38 miles east of Somerset.

3. The Kentucky Utilities Company provides electricity to Somerset and Burnside. Pulaski County is supplied electric power by the South Kentucky Rural Electric Cooperative Corporation. Natural gas service is provided to Somerset by the Somerset Gas Service. Burnside does not have natural gas service. There are three distributors of propane and eleven distributors of distillate fuel oil in the Somerset-Burnside area. The local raw water supply is adequate for continued industrial growth.

4. Education is an important growth asset for Pulaski County. Three school systems operate in the county. Somerset is served by the Somerset Independent School District and Burnside is within an area served by the Pulaski County School System.

Somerset Community College, a part of the University of Kentucky Community College System, provides two years of liberal arts and career-oriented programs and offers an Associate Degree in Arts, Science, or Applied Science.

In addition, one university, three senior colleges and two junior colleges are located within 50 miles of the county.

The Somerset State Vocational-Technical School offers training in thirteen different course areas. A cooperative program between the vocational school and Western Kentucky State University has been established in the Aircraft Maintenance Field. Students entering this program may acquire FAA Certification as maintenance technicians and continue at Western in an Associate of Science Degree Program receiving full credit for prior technical training. In addition, a program in Technical Electronics at the vocational school is being coordinated with a two-year Engineering Associate Degree program at the Somerset Community College.

Community Programs for Improvement

Somerset

Industrial and Commercial

Day Star Corporation began operations. Cumberland Wood and Chair Corporation completed a 35,000 square foot expansion of its plant. Tecumseh Products Company, Somerset Marine, Inc., and Somerset Cruisers announced expansion plans. Seventeen new commercial businesses were started or completed in 1974 and numerous existing buildings were remodeled. The Town Springs Shopping Area has been completed and future plans call for another shopping center to be constructed. Somerset Plaza Shopping Center and Tradewinds Shopping Center have expanded with new tenants. The Citizens National Bank occupied its new building in late 1974.

Utilities

A new tertiary sewage treatment plant is now in operation increasing total treatment capacity to 4,500,000 gallons per day, and a 16-inch sewer line has been extended from the new plant to the industrial park in the southern section of the city. Improvements totaling \$50,000 were completed by the Somerset Gas Service in 1974. The Kentucky Water Service Company has installed two new pumps. Kentucky Utilities Company has a new 7,500 kva substation and the South Kentucky RECC plans to build a 10,000 kva substation.

Transportation

The Cumberland Parkway, which extends from Somerset to the west connecting with Interstate 65, has been completed. A new four-lane highway is to be constructed which will connect Somerset and London. A section of the highway between Somerset and Shopville is under construction with remaining sections presently in the design stage. A bypass around the southeastern quadrant of Somerset has been proposed.

Education

A \$2.1 million project at the Somerset Independent School District for the construction of a new middle school and an athletic compound at the Somerset High School is scheduled for completion by the spring of 1975. The Pulaski County School System has completed the addition of a classroom complex and gymnasium to the Pulaski County High School, is constructing additional classrooms at several elementary schools, and plans to build a 24-room junior high school and a football stadium at the

high school. The Somerset State Vocational-Technical School has moved into a new \$1.25 million facility. Somerset Community College implemented an Associate Degree Program in Electrical Engineering Technology for the 1974-75 school year.

Health

In May of 1976, the Somerset City Hospital will close and the new 175-bed Lake Cumberland Medical Center will open. This \$10 million facility will feature the most modern facilities and equipment available. The Lake Cumberland District Health Department has initiated several new medical programs and expanded existing programs.

Public Safety

In 1974, the Somerset Police Department expended \$43,000 for improvements including the installation of all new radio equipment. The Pulaski County Sheriff's Office purchased six mobile radio units for the patrol cars. A 1,500 gpm pumper and a 750 gpm pumper have been ordered by the Somerset Fire Department.

Communications

The General Telephone Company conducted a service improvement and expansion program in the Somerset area in 1974 at a cost of \$1.1 million. The Commonwealth-Journal completely remodeled its offices and plant facilities and purchased some additional equipment. The Observer plans to replace all automatic typesetting machines in 1975.

Recreation

Improvements to the Babe Ruth Park have been completed. The city purchased a tract of land which it plans to develop as a residential recreational park. Plans are underway to renovate and fully develop the Pulaski County Park.

Other

The Somerset-Pulaski County Tourist Commission has been established. A new municipal parking lot and two additional paved lots have added 185 parking spaces in the downtown area. In 1974, approximately 8 miles of city streets were paved or resurfaced. The city has annexed approximately 1,000 acres of territory including the industrial area to the south of town. A new \$2 million County Governmental Complex is scheduled for completion in 1976. The Pulaski County Public Library has a new microfilm-reader-printer and will have an additional bookmobile by the spring of 1975. A 100-unit apartment complex and a 12-unit apartment house have been completed.

Burnside

Industrial and Commercial

Hamer Hardwood Manufacturers, Inc., has remodeled the interior of its building. Cumberland Charcoal Company expanded its facilities with the construction of an additional warehouse. Several new commercial businesses have opened and several existing businesses have expanded their facilities.

Utilities

The Burnside Municipal Water Works has installed a new turbine lake pump and new treatment equipment.

Education

Additional facilities constructed at the Burnside School include a multi-purpose gymnasium, a library, and two reading rooms.

Public Safety

The Burnside Police Department has new high-band radio equipment. The Burnside Fire Department has a new 750 gpm pumper on order and a new fire alarm system has been installed in five locations throughout the city.

Recreation

New facilities added to Cole Park include an amphitheatre, playground, basketball-tennis court, horseshoe pitching court, and baseball diamond. Further development of the park is planned. Preliminary work is underway for a state-owned public boat dock at Burnside Island.

Other

The Burnside Public Library has relocated into an expanded facility which was completely remodeled for library use. Plans are underway to start a Little Theatre Group.

Recreation, Entertainment and Livability

Somerset and Burnside each offer supervised recreational programs during the summer months. The Somerset-Burnside area offers a variety of recreational facilities including playgrounds, swimming pool, tennis courts, and baseball diamonds which are open to the public. The 246-acre

Pulaski County Park, located 9 miles west of Somerset on Lake Cumberland, provides campsites, a large picnic area, and a playground. In addition, there are eleven recreation areas in Pulaski County which are operated by the Corps of Engineers and which offer launching ramps, camping facilities, and picnic areas.

Lake Cumberland with 1,255 miles of shoreline is the mainstream of scenic beauty and outdoor activity in south central Kentucky. General Burnside State Park at Burnside is an island in Lake Cumberland made accessible by a causeway. The park offers a camping area and a variety of water sports and recreational facilities including an 18-hole golf course.

Another highlight of the area is the Annual North-South Championship Outboard Boat Regatta held on Lake Cumberland near Burnside. Sponsored by the Somerset-Pulaski County Jaycees, this event is held in early June and is sanctioned and approved for world records by the National Outboard Association.

The Daniel Boone National Forest lies partially within the boundaries of Pulaski County. This vast timberland encompasses hundreds of natural and historical attractions and provides ample opportunities for camping, boating, fishing, and hiking.

In the surrounding 50-mile area, there are three state parks which offer not only recreational facilities but scenic beauty as well.

Lake Cumberland State Resort Park, 43 miles southwest of Somerset, is a 3,000-acre park located on Lake Cumberland. The park offers lodge and cottage accommodations and sites for tent and trailer camping. Recreational facilities include two swimming pools, riding stables, tennis court, 9-hole and miniature golf courses, hiking trails, playground, and picnic area. A marina has houseboats, fishing boats, and motors for rent plus year-round launching ramps.

Cumberland Falls State Resort Park is located 34 miles southeast of Somerset in the midst of the Daniel Boone National Forest. The world famous Cumberland Falls are often called the "Niagara of the South." By night when the moon is full, the mist from the falls shows a mysterious moonbow, one of two such phenomena on earth. The park offers facilities for swimming, fishing, hiking, horseback riding, and picnicking. A lodge, cottages, and camping sites are also available.

Levi Jackson Wilderness Road State Park, 38 miles east of Somerset, is the site where Boone's Trace and Wilderness Road pioneer trails converge. The Mountain Life Museum which is a reproduced pioneer settlement and McHargue's Mill which contains one of the world's largest millstone collections are located on the park grounds. This 815-acre park offers facilities for camping, swimming, hiking, picnicking, and horseback riding.

Three state shrines of historical interest are also located within 50 miles of Somerset. William Whitley House State Shrine is the site of the first brick house west of the Alleghenies, built 1787-94. Isaac Shelby State Shrine is the burial site of Kentucky's first governor who served from 1792-96. Constitution Square State Shrine is an authentic reproduction of Kentucky's first courthouse square where the first State Constitution was written.

THE LABOR MARKET

POPULATION TRENDS

| Area | Population | | | | Percent Change | |
|-------------------|------------|---------|---------|---------|----------------|---------|
| | 1973* | 1970 | 1960 | 1950 | 1960-70 | 1950-60 |
| Somerset | N. A. | 10,436 | 7,112 | 7,097 | +46.7 | + 0.2 |
| Burnside | N. A. | 586 | 575 | 615 | + 1.9 | - 6.5 |
| Labor Market Area | 150,900 | 141,876 | 140,707 | 161,140 | + 0.8 | -12.7 |
| Pulaski County | 38,500 | 35,234 | 34,403 | 38,452 | + 2.4 | -10.5 |
| Casey County | 13,300 | 12,930 | 14,327 | 17,446 | - 9.8 | -17.9 |
| Laurel County | 28,800 | 27,386 | 24,901 | 25,797 | +10.0 | - 3.5 |
| Lincoln County | 17,400 | 16,663 | 16,503 | 18,668 | + 1.0 | -11.6 |
| McCreary County | 13,400 | 12,548 | 12,463 | 16,660 | + 0.7 | -25.2 |
| Rockcastle County | 12,600 | 12,305 | 12,334 | 13,925 | - 0.2 | -11.4 |
| Russell County | 11,900 | 10,542 | 11,076 | 13,717 | - 4.8 | -19.3 |
| Wayne County | 15,000 | 14,268 | 14,700 | 16,475 | - 2.9 | -10.8 |

*Provisional Estimates.

Sources: U. S. Department of Commerce, Bureau of the Census, Census of Population, 1970, 1960, 1950. U. S. Bureau of the Census, Current Population Reports, Series P-26, June 1973.

GENERAL EMPLOYMENT CHARACTERISTICS, 1973

| Major Employment Group | Employment | |
|------------------------|----------------|-------------------|
| | Pulaski County | Labor Market Area |
| TOTAL | 15,360 | 50,150 |
| Agricultural | 1,790 | 8,110 |
| Nonagricultural | 13,570 | 42,040 |
| Manufacturing | 3,560 | 9,540 |
| Government | 1,780 | 7,010 |
| Trade and Services | 3,840 | 9,324 |

Source: Kentucky Department for Human Resources, Bureau for Administration and Operations.

MANUFACTURING EMPLOYMENT TRENDS BY INDUSTRY

MARCH 1974 AND 1964

| Industry | Pulaski County | | | Labor Market Area | | |
|--|----------------|-------|----------|-------------------|-------|----------|
| | 1974 | 1964 | % Change | 1974 | 1964 | % Change |
| TOTAL | 3,290 | 1,372 | + 139.8 | 9,968 | 3,928 | + 153.8 |
| Food & Kindred Products | 278 | 159 | + 74.8 | 1,096 | 511 | + 114.5 |
| Tobacco | 1 | 2 | - 50.0 | 1 | 2 | - 50.0 |
| Apparel, Textiles, Leather | 584 | 527 | + 10.8 | 3,539 | 1,831 | + 93.3 |
| Lumber, Furniture | 911 | 362 | + 151.7 | 2,214 | 1,071 | + 106.7 |
| Printing & Publishing, Paper | 60 | 25 | + 140.0 | 1,026 | 57 | +1700.0 |
| Chemicals, Petroleum & Coal, Rubber | 372 | 140 | + 165.7 | 461 | 190 | + 142.6 |
| Stone, Clay & Glass | 463 | 143 | + 223.8 | 510 | 188 | + 171.3 |
| Primary Metals | 0 | 0 | 0 | 88 | 0 | -- |
| Machinery, Metal Products, Equip. | 621 | 12 | +5075.0 | 987 | 66 | +1395.5 |
| Other | 0 | 2 | - 100.0 | 46 | 12 | + 283.3 |

Source: Kentucky Department for Human Resources, Number of Workers in Manufacturing Industries Covered by Kentucky Unemployment Insurance Law Classified by Industry and County, March 1974, March 1964.

MAJOR SOMERSET AND BURNSIDE MANUFACTURING FIRMS,
THEIR PRODUCTS AND EMPLOYMENT

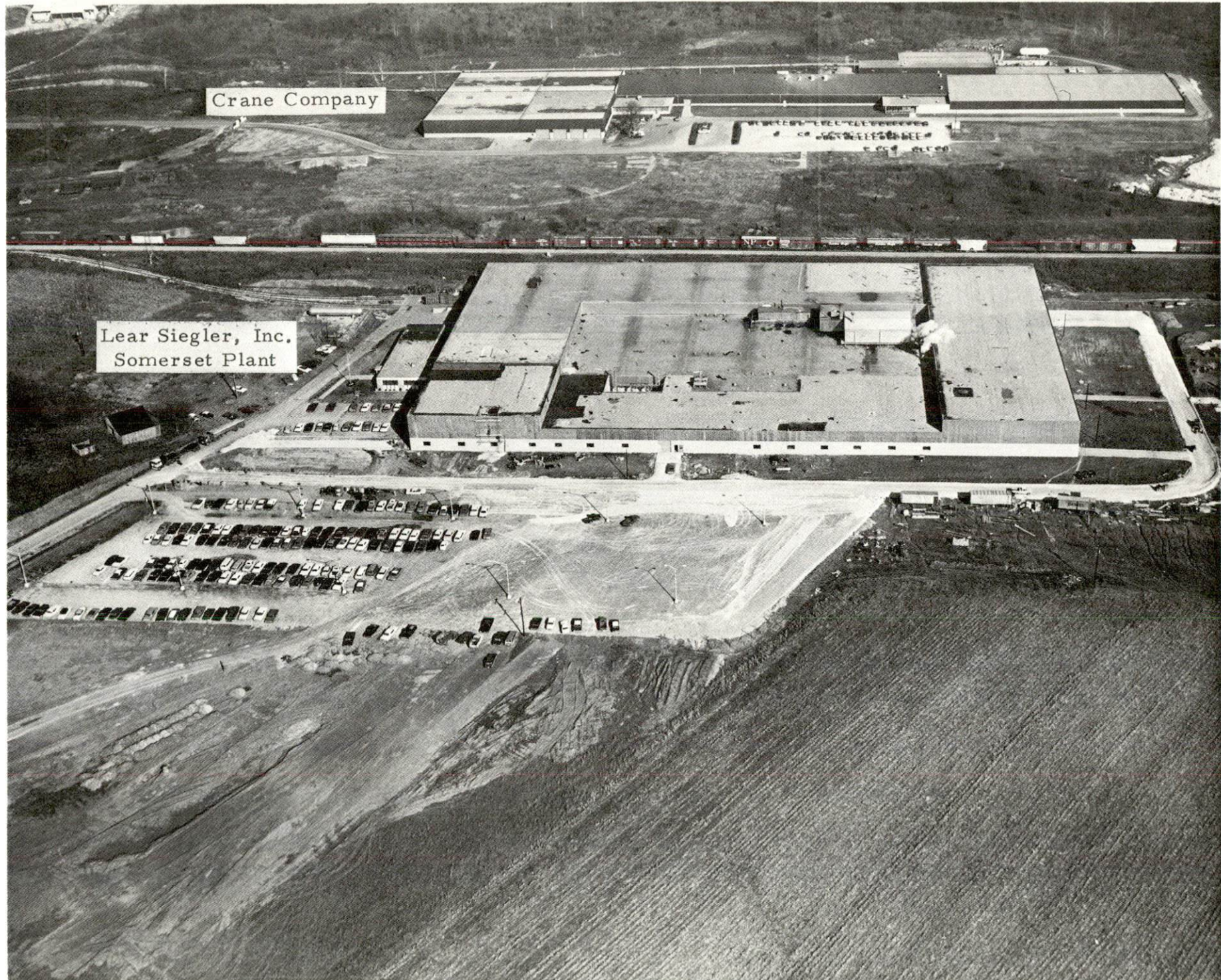
| <u>Firm (Establishment date)</u> | <u>Product</u> | <u>Employment</u> | | | |
|---|---|-------------------|-------------|---------------|------------------|
| | | <u>Total</u> | <u>Male</u> | <u>Female</u> | <u>Organized</u> |
| <u>Somerset</u> | | | | | |
| Crane Company (1963) | Vitreous china, sanitary ware | 275 | 263 | 12 | * |
| Cumberland Wood & Chair Corporation (1958) | Bunk beds, beds and headboards, chairs | 186 | 183 | 3 | |
| General Electric Company, Somerset Glass Plant (1958) | Pressed glassware | 126 | 76 | 50 | * |
| Lear Siegler, Inc., Somerset Plant (1965) | Automobile seat frames, auto- mobile seat assemblies | 650 | 500 | 150 | * |
| Palm Beach Company (1945) | Men's coats | 590 | 30 | 560 | * |
| Southern Belle Dairy Company, Inc. (1951) | Fluid milk, ice cream mix | 192 | 170 | 22 | * |
| Tecumseh Products Company (1970) | Compressors for air conditioners | 750 | | | * |
| <u>Burnside</u> | | | | | |
| Cumberland Charcoal Corporation (1963) | Charcoal briquets | 174 | 170 | 4 | * |
| Hamer Hardwood Manufacturers, Inc. (1958) | Lumber, lami- nated truck flooring | 100 | 99 | 1 | |

*See Labor Organizations, page 15.

Source: Kentucky Department of Commerce, 1975 Kentucky Directory of
Manufacturers.



GENERAL ELECTRIC COMPANY, SOMERSET GLASS PLANT



Crane Company

Lear Siegler, Inc.
Somerset Plant

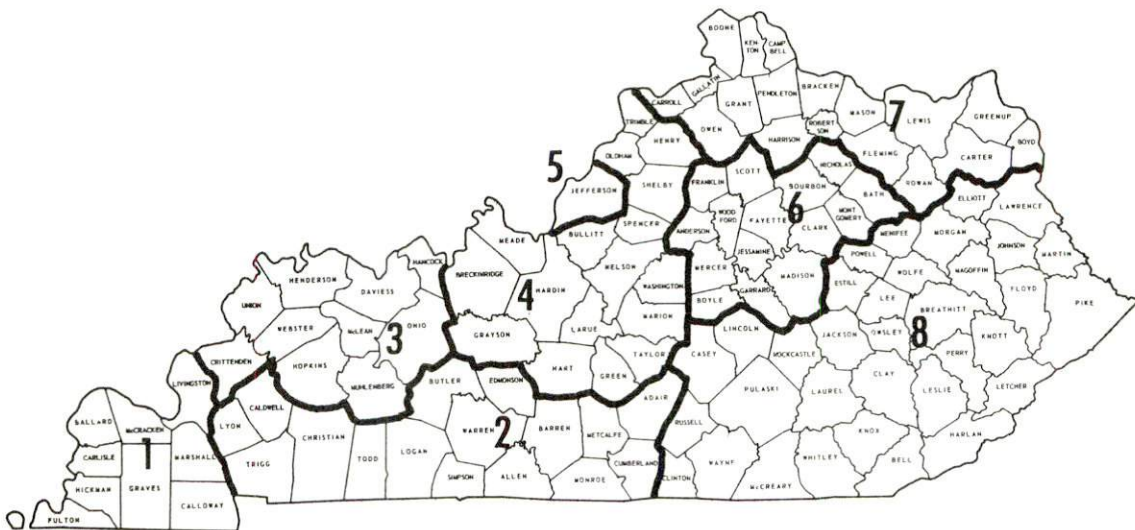


TECUMSEH PRODUCTS COMPANY

WAGES

Occupational wage rates for specific industries are usually not available to most government agencies, and wage data furnished to state employment agencies by industrial employers is protected from disclosure by federal law. The most reliable up-to-date wage information can be obtained by direct contact with local employers.

Associated Industries of Kentucky, a voluntary organization of Kentucky businesses, regularly collects occupational wage rates and fringe benefits data from participating member firms. Data is compiled for over 130 clearly defined office, production, and service occupations. Tabulations are published for eight regions of Kentucky, as shown on the map below. It should be noted that the data may be weighted by the preponderance of firms in the larger cities and may be somewhat higher than the rates paid in the smaller communities. Data from these tabulations are available, upon request, from the Kentucky Department of Commerce, Frankfort, Kentucky 40601.



Associated Industries of Kentucky Area Wage Surveys

LABOR ORGANIZATIONS

Union

Representing manufacturing workers at:

Somerset

International Brotherhood
of Operative Potters

Crane Company

International Union of Electrical,
Radio, and Machine Workers
(AFL-CIO) IUE

General Electric Company
Somerset Glass Plant

United Auto Workers

Lear Siegler, Inc.
Somerset Plant

Amalgamated Clothing
Workers of America

Palm Beach Company

Amalgamated Meat Cutters
and Butcher Workmen of
North America

Southern Belle Dairy Company, Inc.

International Brotherhood of
Electrical Workers

Tecumseh Products Company

Burnside

Laborer's International Union
of North America

Cumberland Charcoal Corporation

ESTIMATED MALE LABOR SUPPLY
SOMERSET AND BURNSIDE LABOR MARKET AREA

| Area | Current | | | Under- employed | Future |
|--------------|---------|-----------------------|------------|--------------------|--|
| | Total | Not in Labor Force | Unemployed | | Reaching 18 yrs. of age before 1981 |
| Labor Market | | | | | |
| Area | 8,730 | 3,690 | 2,700 | 2,340 | 7,470 |
| Pulaski | 1,520 | 570 | 540 | 410 | 1,804 |
| Casey | 780 | 310 | 210 | 260 | 651 |
| Laurel | 1,240 | 320 | 490 | 430 | 1,492 |
| Lincoln | 980 | 220 | 400 | 360 | 856 |
| McCreary | 1,320 | 900 | 210 | 210 | 775 |
| Rockcastle | 1,330 | 750 | 370 | 210 | 666 |
| Russell | 820 | 360 | 250 | 210 | 470 |
| Wayne | 740 | 260 | 230 | 250 | 756 |

Sources: Kentucky Department for Human Resources, Kentucky Labor Supply Estimates by County, 1973. Kentucky Department of Commerce, Future Labor Supply before 1981.

ESTIMATED FEMALE LABOR SUPPLY
SOMERSET AND BURNSIDE LABOR MARKET AREA

| Area | Current | | | Under- employed | Future |
|--------------|---------|-----------------------|------------|--------------------|--|
| | Total | Not in Labor Force | Unemployed | | Reaching 18 yrs. of age before 1981 |
| Labor Market | | | | | |
| Area | 10,090 | 6,800 | 1,170 | 2,120 | 7,049 |
| Pulaski | 2,330 | 1,570 | 260 | 500 | 1,633 |
| Casey | 850 | 540 | 80 | 230 | 625 |
| Laurel | 1,680 | 1,050 | 200 | 430 | 1,434 |
| Lincoln | 1,090 | 590 | 190 | 310 | 787 |
| McCreary | 1,060 | 910 | 60 | 90 | 694 |
| Rockcastle | 1,150 | 810 | 140 | 200 | 628 |
| Russell | 750 | 440 | 100 | 210 | 479 |
| Wayne | 1,180 | 890 | 140 | 150 | 769 |

Sources: Kentucky Department for Human Resources, Kentucky Labor Supply Estimates by County, 1973. Kentucky Department of Commerce, Future Labor Supply before 1981.

PER CAPITA PERSONAL INCOME

| <u>Area</u> | <u>1972</u> | <u>1962</u> | <u>% Change</u> |
|-------------------------|-----------------|---------------|-----------------|
| Pulaski County | \$2,778 | \$1,144 | +142.8 |
| Labor Market Area Range | \$1,428 - 2,778 | \$664 - 1,216 | N.A. |
| Kentucky | 3,634 | 1,769 | +105.4 |
| U. S. | 4,549 | 2,381 | + 91.1 |

Sources: Office of Development Services and Business Research, College of Economics, University of Kentucky, Kentucky Personal Income 1929/68. U. S. Department of Commerce, Office of Business Economics, Survey of Current Business, May, 1974, August, 1974.

TRANSPORTATION

Rail

Line serving Somerset - Southern Railway System

Services - Two northbound and two southbound freights daily; thirty through freights daily; switching facilities; siding space for fourteen cars; nearest piggyback facilities at Danville, 45 miles northwest of Somerset.

Line serving Burnside - Southern Railway System

Services - One northbound and one southbound freight daily; thirty through freights daily; switching facilities; siding space for ten cars; nearest piggyback facilities at Danville, 53 miles northwest of Burnside.

For details on routing, schedules, rates, and services, contact:

District Sales Manager
Southern Railway System
701 South Broadway
Lexington, Kentucky 40508

Truck Service

Somerset and Burnside

Company

Home Office

Courier-Newsom Express, Inc.

P. O. Box 509
Columbus, Indiana 47201

Detherage Freight Line*

P. O. Box 728
Somerset, Kentucky 42501

Eagle Express Company, Inc.

P. O. Box 679
Somerset, Kentucky 42501

Eldridge Truck Line

North Highway 27
Somerset, Kentucky 42501

Great Lakes Express

Saginaw, Michigan

McLean Trucking Company

617 Waughtown Street

Monticello-Albany Freight Line,
Inc.

Winston-Salem, North Carolina 27107
160 South Main Street
Monticello, Kentucky 42633

*Serves Somerset only.

Other Freight ServicesNearest Shipping Center

REA Express

Local delivery and pickup service
at Somerset

United Parcel Service

London, Kentucky

HIGHWAY MILES AND TRUCK TRANSIT TIME IN DAYS FROM
SOMERSET, KENTUCKY, TO SELECTED MARKET CENTERS

| City | Delivery | | City | Delivery | |
|------------------|------------------|------------|---------------------|------------------|------------|
| | Highway Miles | Time TL | | Highway Miles | Time TL |
| Atlanta, Ga. | 325 | 2 | Los Angeles, Calif. | 2,237 | 4 |
| Birmingham, Ala. | 360 | 2 | Louisville, Ky. | 130 | 1 |
| Chicago, Ill. | 429 | 2 | Nashville, Tenn. | 173 | 2 |
| Cincinnati, Ohio | 187 | 1 | New Orleans, La. | 715 | 3 |
| Cleveland, Ohio | 439 | 2 | New York, N. Y. | 863 | 3 |
| Detroit, Mich. | 453 | 2 | Pittsburgh, Pa. | 487 | 2 |
| Knoxville, Tenn. | 131 | 1 | St. Louis, Mo. | 394 | 2 |

Source: Delivery Time Only - Eagle Express Company, Inc., P. O. Box
679, Somerset, Kentucky 42501

AirLocalNearest CommercialSomerset-Pulaski
County Airport

London-Corbin Magee Field Airport

Location: 2 1/2 miles south of
Somerset

London, 38 miles east of Somerset

Runways: 1 paved

1 paved

Length: 3,900 feet

6,000 feet

Traffic

Control: Wind tee and wind sock

Wind sock

Lighting: Beacon and runway
lightsBeacon, runway and obstruction
lightsServices: 80 and 100 octane,
A & E repair, general
flying service, taxi,
rent-a-carPiedmont Airlines, 80 and 100
octane, JP-A-50, taxi, weather,
flight training, charter and
ambulance service, vending
machines

Air Freight

Service: Chartered air freight
services must be
arrangedAll commercial air carriers accept
air freight on a space-available
basis

Water

Lake Cumberland, Burnside, is navigable for a distance of approximately 101 miles. Presently, barge service is being used for transport of coal to the John Sherman Cooper Power Station.

Bus

Southern Greyhound Bus Lines (Somerset and Burnside)

Taxi

One company with 24-hour, radio-dispatched service (Somerset)

Rental Services

Car, truck, and trailer rentals available (Somerset)

POWER AND FUEL

Electricity

Company serving Somerset and Burnside - Kentucky Utilities Company
Source of power - Kentucky Utilities Company
Total generating capacity - 1,735,000 KW

For industrial rates contact:

Kentucky Utilities Company
North Main Street
Somerset, Kentucky 42501

Company serving Pulaski County - South Kentucky RECC
Source of power - East Kentucky Power Cooperative
Total generating capacity - 548,000 KW

For industrial rates contact:

South Kentucky RECC
Post Office Box 910
Somerset, Kentucky 42501

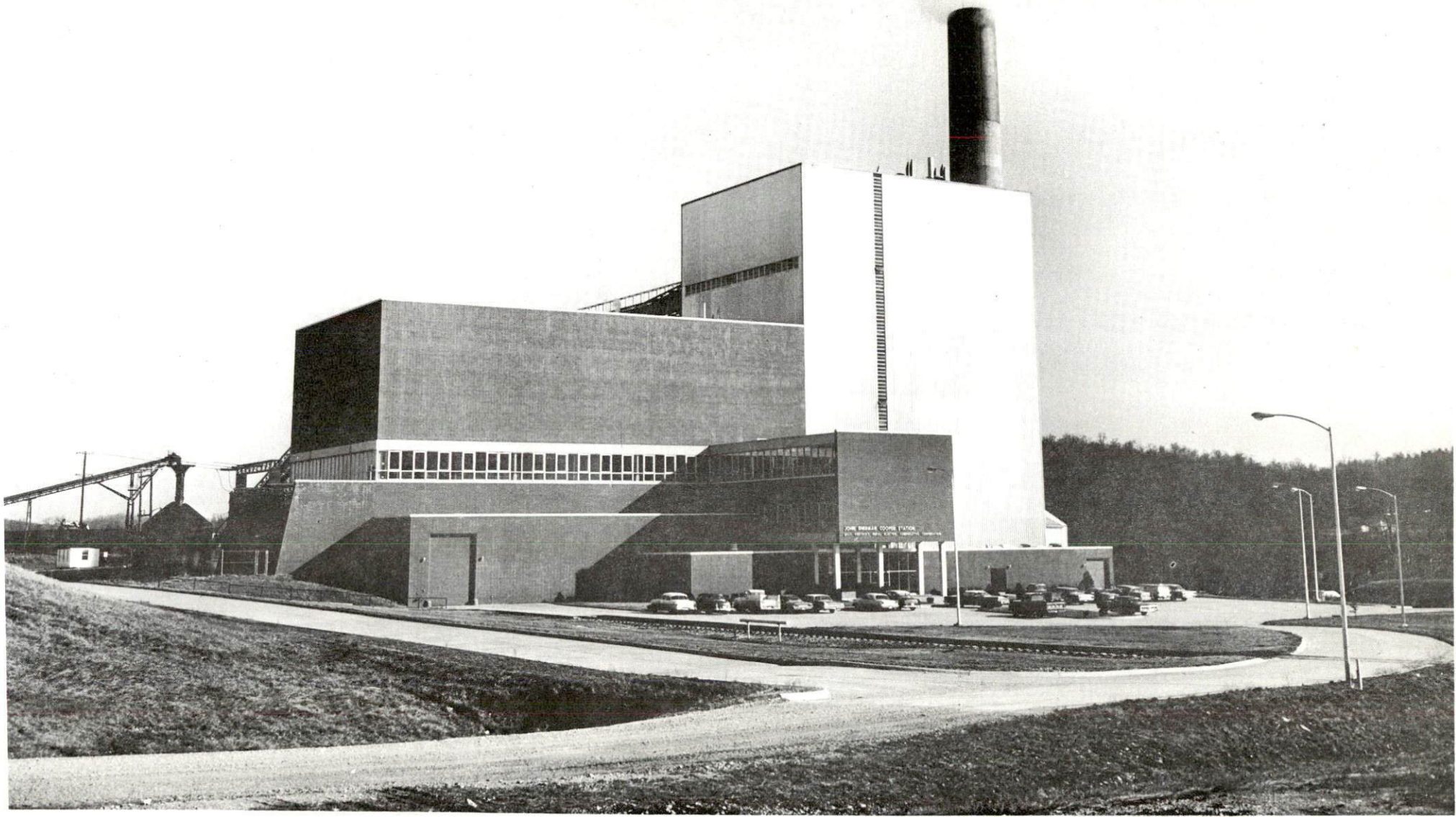
Natural Gas

Company serving Somerset - Somerset Gas Service
Source of supply - Texas Eastern Transmission Corporation
Size of transmission mains - 30-inch (supplier); 8-inch (distributor)
Distribution mains - 6, 4, 3, and 2 inches
Distribution pressure - 10 to 40 psi
Btu content - 1,014 per cubic foot; Specific gravity - .575

For rates and supplies contact:

Somerset Gas Service
College Street
Somerset, Kentucky 42501

Natural gas service is not available in Burnside.



JOHN SHERMAN COOPER STATION
EAST KENTUCKY POWER COOPERATIVE

Other Fuels

Propane and Butane

Cumberland Natural Gas Service, Tateville
Doxol LP Gas, Williams Energy Company
104 South Vine, Somerset
Pyrofax Gas Corporation
114 South Main Street, Somerset

Fuel Oils

Distillate fuel oil -

Appalachian Oil Corporation (Union 76)
South Highway 27, Somerset
Ashland Oil, Inc.
509 Monticello Road, Somerset
Cumberland Lake Shell, Inc.
Railroad Drive, Somerset
Direct Oil Company of Kentucky
West Highway 80, Somerset
Exxon Company U. S. A.
Oak Hill Road, Somerset
Gulf Oil Products Distributor (W. H. Ramsey)
710 West Columbia Street, Somerset
Somerset Refinery, Inc., Office
520 Monticello Road, Somerset
Standard Oil Company (bulk plant)
605 South Main, Somerset
VanHook Oil Company, Inc.
Route 1, Somerset
J. Heber Lewis Oil Company, Inc.
Walnut Street, Burnside
Arco Oil Company, Steve Vaught (distributor)
Science Hill

Residual fuel oil - arrangements must be made with the refinery

Low sulphur content coal - available locally

WATER AND SEWERAGE

Water

Company serving Somerset - Kentucky Water Service Company, Inc.*
Source - Lake Cumberland
Treatment plant capacity - 3,000,000 gpd
Average daily consumption - 2,000,000 gallons
Peak daily consumption - 2,500,000 gallons
Type treatment - Prechlorination, coagulation, sedimentation, filtration,
fluoride adjustment, disinfection
Storage capacity - 2,050,000 gallons
Size lines - 16, 12, 10, 8, 6, 4, and 2 inches
Average pressure - 125 psi
Average temperature - 55 degrees F.

MONTHLY WATER RATES FOR WHOLESALE AND INDUSTRIAL CONSUMERS

| | | |
|-------|-----------------|--------------------|
| First | 1,000 gallons | \$3.25 (Minimum) |
| Next | 1,000 gallons | 1.05 per M gallons |
| Next | 4,000 gallons | 1.00 per M gallons |
| Next | 19,000 gallons | .90 per M gallons |
| Next | 25,000 gallons | .80 per M gallons |
| Next | 25,000 gallons | .75 per M gallons |
| Next | 25,000 gallons | .65 per M gallons |
| Next | 100,000 gallons | .60 per M gallons |
| Over | 200,000 gallons | .50 per M gallons |

MINIMUM MONTHLY CHARGES

| | |
|-----------------------|---------|
| 5/8 or 3/4-inch meter | \$ 3.25 |
| 1 or 1 1/4-inch meter | 7.25 |
| 1 1/2-inch meter | 13.25 |
| 2-inch meter | 20.25 |
| 3-inch meter | 54.00 |
| 4-inch meter | 90.00 |
| 6-inch meter | 180.00 |

Tap-on charge: None

*One 300 horsepower low level pump and one 400 horsepower high service pump have been installed.

Company serving Burnside - Burnside Municipal Water Works*
 Source - Lake Cumberland
 Treatment plant capacity - 396,000 gallons per day
 Average daily consumption - 100,000 gallons
 Peak daily consumption - 200,000 gallons
 Type treatment - Pre-chlorination, coagulation, filtration, sedimentation
 Storage capacity - 145,000 gallons
 Size lines - 6 inches
 Average pressure - 65 psi
 Average temperature - 50 to 55 degrees F.

MONTHLY WATER RATES FOR WHOLESALE
 AND INDUSTRIAL CONSUMERS

| | | |
|----------|-----------------------|--------------------|
| First | 2,000 gallons or less | \$5.65 (Minimum) |
| Next | 1,000 gallons | 1.55 per M gallons |
| Next | 2,000 gallons | 1.40 per M gallons |
| Next | 5,000 gallons | 1.30 per M gallons |
| Next | 15,000 gallons | 1.15 per M gallons |
| Next | 25,000 gallons | 1.00 per M gallons |
| Next | 50,000 gallons | .85 per M gallons |
| All over | 100,000 gallons | .70 per M gallons |

Tap-on charges: 3/4-inch meter - \$ 75
 1-inch meter
 and larger - \$150

*A new turbine lake pump and new treatment equipment have been installed.

Name of water district - Pulaski County Water District No. 1
 Area served - Along U. S. Highway 27 and Kentucky Highway 1247 from
 Caney Fork Creek, north of Somerset, to approximately 1 mile north
 of Science Hill, including Science Hill area
 Date when water district began operating - August 1964
 Source of supply of treated water - Kentucky Water Service Company, Inc.
 Average amount of water used in a 24-hour period - 74,740 gallons
 Peak amount of water used in a 24-hour period - 100,000 gallons
 Storage capacity - 75,000 gallons
 Average pressure - 65 psi
 Average temperature - 55 degrees F.
 Size lines - 6, 4, and 2 inches

Rates -

| | | |
|----------|-----------------------|--------------------|
| First | 2,000 gallons or less | \$4.50 (Minimum) |
| Next | 3,000 gallons | 1.20 per M gallons |
| Next | 5,000 gallons | 1.00 per M gallons |
| Next | 15,000 gallons | .90 per M gallons |
| Next | 75,000 gallons | .75 per M gallons |
| All over | 100,000 gallons | .60 per M gallons |

Monthly Minimum Charges

| | |
|---------------------------|---------|
| 5/8 or 3/4-inch meter | \$ 4.50 |
| 1-inch meter | 5.50 |
| 1 1/4 or 1 1/2-inch meter | 6.50 |
| 2-inch meter | 7.50 |
| 3-inch meter | 9.00 |
| 4-inch meter | 12.00 |
| 6-inch meter | 25.00 |

Tap-on charges:

| | |
|----------------------|-------|
| 5/8 x 3/4-inch meter | \$200 |
| 1-inch meter | 260 |
| 2-inch meter | 355 |

Name of water district - Pulaski County Water District No. 2
 Area served - 11.72 miles of main line adjacent to Kentucky Highway 80
 from Somerset West, plus 1 1/2 miles of branch line
 Date when water district began operating - 1967
 Source of supply of treated water - Kentucky Water Service Company, Inc.
 Average amount of water used in a 24-hour period - 88,000 gallons
 Peak amount of water used in a 24-hour period - 98,000 gallons
 Storage capacity - 100,000 gallons
 Average pressure - 80 psi
 Average temperature - 40 to 50 degrees F.
 Size lines - 8-inch and 6-inch cast iron; 4-inch p. v. c.

Rates -

Large Business Establishments
 (1-inch meter or over)

| | | |
|----------|-----------------|--------------------|
| First | 5,000 gallons | \$9.45 (Minimum) |
| Next | 5,000 gallons | 1.50 per M gallons |
| Next | 10,000 gallons | .85 per M gallons |
| Next | 30,000 gallons | .75 per M gallons |
| Next | 50,000 gallons | .60 per M gallons |
| All over | 100,000 gallons | .50 per M gallons |

Tap-on charges:

| | |
|----------------------|---------------------|
| 5/8 x 3/4-inch meter | \$200 (Residential) |
| 1-inch meter | 300 (Commercial) |
| 2-inch meter | 500 (Industrial) |

Name of water district - Pleasant Hill Water District
 Area served - Northwest of Somerset, approximately 4 miles square,
 and southwest of Somerset, approximately 5 miles square
 Date when water district began operating - 1965
 Source of supply of treated water - Kentucky Water Service Company, Inc.
 Average amount of water used in a 24-hour period - 27,780 gallons
 Peak amount of water used in a 24-hour period - 37,290 gallons
 Storage capacity - 36,000 gallons
 Average pressure - 65 psi
 Average temperature - 55 degrees F.
 Size lines - 6, 4, and 3 inches

Rates -

| | | |
|----------|-----------------|--------------------|
| First | 2,000 gallons | \$5.75 (Minimum) |
| Next | 3,000 gallons | 1.50 per M gallons |
| Next | 5,000 gallons | 1.20 per M gallons |
| Next | 15,000 gallons | 1.00 per M gallons |
| Next | 75,000 gallons | .75 per M gallons |
| All over | 100,000 gallons | .60 per M gallons |

Tap-on charges:

| | |
|----------------------|-------|
| 1-inch meter or less | \$250 |
| 1 1/2-inch meter | 300 |
| 2-inch meter | 350 |

Surface water sources - Lake Cumberland, Rockcastle River and
 Cumberland River

Average discharge - Buck Creek near Shopville (Pulaski County),
 254 cfs (22-year record)

Expected ground water yield - North central portion of county 5 to 50
 gpm; remainder of county 5 gpm or less

Sewerage

Company serving Somerset - Somerset Sewer Department*

Design capacity - Plant 1 - 2,500,000 gpd; Plant 2 - 2,000,000 gpd

Average daily flow - 1,500,000 gallons

Treatment - Plant 1 - Primary and secondary; Plant 2 - Tertiary

Type treatment - Plant 1 - Aeration, clarifier, drying beds;

Plant 2 - Aeration, clarifier, drying beds, extended aeration on lagoons

Treated effluent discharged into - Sinking Creek and Pitman Creek

Size of sanitary mains - 24, 18, 16, 10, 8, and 6 inches

Rates - (monthly)

| | | |
|-------|-----------------|--------------------|
| First | 1,000 gallons | \$2.50 (Minimum) |
| Next | 6,000 gallons | 1.00 per M gallons |
| Next | 6,000 gallons | .95 per M gallons |
| Next | 12,000 gallons | .90 per M gallons |
| Next | 25,000 gallons | .85 per M gallons |
| Next | 50,000 gallons | .80 per M gallons |
| Next | 650,000 gallons | .75 per M gallons |
| Over | 750,000 gallons | .675 per M gallons |

Tap-on charges:

| | |
|---------------------|---------|
| Residences | - \$ 50 |
| Commercial Property | - 75 |
| Industrial Property | - 100 |

Septic tanks are utilized for sewage disposal in Burnside.

*In February, 1975, a new 2,000,000 gallon per day tertiary treatment plant was put into operation. A 16-inch sewer line has been extended from the new sewage treatment plant to the industrial park in the southern section of the city.

LOCAL GOVERNMENT

City

Somerset

Structure - Mayor - 4-year term; 12 councilmen - 2-year terms

| | |
|-------------------------------|-----------|
| Budget 1974-75 - General Fund | \$665,624 |
| 1974 - Sewer Fund | 337,182 |
| City Gas System | 963,900 |

Fees and licenses - Business licenses range from \$5 to \$300 per year including the following fees for manufacturers:

| | |
|-------------------------|---------|
| 50 employees or less | - \$100 |
| 51 to 100 employees | - 150 |
| More than 100 employees | - 200 |

Burnside

Structure - Mayor - 4-year term; 6 councilmen - 2-year terms

| | |
|----------------------------|----------|
| Budget 1974 - General Fund | \$33,010 |
| Water Fund | 47,533 |

Fees and licenses - License fees range from \$10 to \$100 per year depending on the type of business

County

Structure - County Judge - 4-year term; 5 magistrates - 4-year terms

| | |
|-------------------------------|-----------|
| Budget 1974-75 - General Fund | \$349,950 |
| Road Fund | 140,000 |

Assessed Value of Property, 1974

| <u>Classes of Property</u> | <u>Somerset</u> | <u>Pulaski County</u> |
|----------------------------|-----------------|-----------------------|
| Real Estate | \$63,417,890 | \$224,848,750 |
| Tangibles | 17,735,159 | 44,724,413 |
| Public Service | 15,962,017* | 40,351,651 |

*Total not complete.

Property Taxes

Land and buildings are taxed by the state and may be taxed by local jurisdictions. The state rate is \$0.015 per \$100 of assessed valuation.

Tangible personal property owned by manufacturers (automobiles, trucks, finished goods, office furniture, office equipment) is taxed by the state at \$0.15 per \$100 and may be taxed by local jurisdictions.

Manufacturing machinery, raw materials inventories, pollution control equipment, and goods in process inventories are not subject to local taxation. The state rate is \$0.15 per \$100.

Property stored in public warehouses is not subject to local taxation. The state rate is only \$0.015 per \$100.

All property is assessed at 100 percent of fair cash value.

Local Property Tax Rate Per \$100 of Assessed Valuation, 1974*

| <u>Taxing Jurisdiction</u> | <u>Somerset</u> | <u>Burnside</u> | <u>Pulaski County</u> |
|----------------------------|-----------------|-----------------|-----------------------|
| County | \$.155 | \$.155 | \$.155 |
| School | .708 | .288 | .288 |
| City | .345 | .260 | |

Utilities Gross Receipts Tax for Schools

Pulaski County levies a 3 percent tax on utilities receipts for the Pulaski County and Somerset Independent schools. This tax is paid by all consumers of utilities. Exempted are receipts from utilities services that are resold and the receipts from the sale of energy or energy producing fuels that exceed 3 percent of the cost of production in manufacturing, processing, mining or refining.

*Kentucky Department of Revenue, Kentucky Property Tax Rates, 1974.

Planning and Zoning

City agency - Somerset Planning Commission
Zoning enforced - Within city of Somerset only
Subdivision regulations enforced - Within city of Somerset and 1 mile beyond the city limits
Local codes enforced - Building, housing
Mandatory state codes enforced - Plumbing, National Fire Protection Association Code, National Building Code (for major buildings and residential construction containing more than 12 bedrooms per building)
Other programs - Public housing

City agency - Burnside Planning and Zoning Commission
Zoning enforced - Within city of Burnside only
Subdivision regulations enforced - Within city of Burnside and 1 mile beyond the city limits
Local codes enforced - Building, housing
Mandatory state codes enforced - Plumbing, National Fire Protection Association Code, National Building Code (for major buildings and residential construction containing more than 12 bedrooms per building)

Safety

| <u>Police</u> | <u>Somerset</u> | <u>Burnside</u> | <u>Pulaski County</u> |
|-------------------|---|-----------------------|-----------------------|
| Total staff | 26 | 2 | 12 |
| Radio-patrol cars | 6 | 1 | 6 |
| Other equipment | Radio base station, radar, portable radios, mobile crime laboratory | Radar, portable radio | Standard |

Fire

| | | |
|--|-----------|----|
| American Insurance Association Fire Rating | 7 & 9 | 7 |
| Full-time staff | 19 | |
| Volunteers | 12 active | 22 |
| Equipment: | | |
| 750 gpm pumpers | 2 | 1 |
| 600 gpm pumper | 1 reserve | |
| 500 gpm pumper | | 1 |
| pickup truck | 1 | |
| brush fire truck with 200-gallon tank | 1 | |

Rescue Service

Somerset-Pulaski County Rescue Squad:

Number of volunteers - 50

Equipment - 1 ambulance, 1 panel truck and 1 van equipped for use as ambulances, 1 panel truck, 1 kitchen truck, utility truck, all equipped with 2-way radios; 5 boats, 4 outboard motors, 3 boat trailers, 2 generators, lake dragging and scuba diving equipment and first aid equipment

Personnel training - Emergency Medical Technician training, American Red Cross, First Aid training, scuba diving and rescue training

Sanitation

| | <u>Somerset</u> | <u>Burnside</u> |
|-----------------------|-------------------------------------|-------------------------|
| Type service | Municipal | Trash control (private) |
| Fee charged: | | |
| residential | \$2.00 per month | \$3.25 per month |
| business | \$4.00 per month minimum charge* | According to volume |
| Collection frequency: | | |
| residential | Weekly | Weekly |
| business | Daily | Upon request |
| Trash pickup | Upon request | Upon request |
| Disposal method | Sanitary landfill | Sanitary landfill |

B & M Sanitation provides residential service in the northern and western parts of Pulaski County. Service is also provided to businesses in Somerset. The residential rate is \$3.50 per month for weekly service and business rates vary according to volume.

Suburban Sanitary Landfill Service provides service to businesses and manufacturing plants. Rates are set according to the volume and weight.

*Fees for businesses are established as a flat rate based on the average charge per month for the year 1973. However, there is a minimum charge of \$1.50 per cubic yard and a minimum monthly charge of \$4.00. The flat rate for all new accounts will be established by the \$1.50 per cubic yard measure.

EDUCATION

Public Schools

| | <u>Somerset Independent</u> | <u>Pulaski County</u> |
|---|---|---------------------------|
| Total Enrollment (1974-75) | 2,399 | 6,325 |
| Elementary | 1,254 | 3,725 |
| Middle School | 405 | |
| High School | 740 | 2,600 |
| Student-Teacher Ratio | 23 to 1 | 23 to 1 |
| Elementary | 22 to 1 | 24 to 1 |
| Middle School | 27 to 1 | |
| High School | 22 to 1 | 23 to 1 |
| Accreditation | Southern Association of Colleges and Schools | |
| Percent High School Graduates to College | 62.6 | 23.8 |
| Expenditures Per Pupil (1973-74) | \$630.10 | \$505.85 |
| Bonded Indebtedness, June 30, 1974 | \$3,649,000 | \$2,926,000 |

Nonpublic Schools

| | <u>Pulaski County Day Care Center</u> |
|-----------------------|---------------------------------------|
| Total Enrollment | 24 |
| Student-Teacher Ratio | 12 to 1 |

Vocational Schools

| | <u>Nearest State School</u> |
|------------|---|
| Location: | Somerset State Vocational Technical School Somerset |
| Curriculum | Data Processing Clerical Secretarial Marketing and Distributive Education Health Careers Learning Lab Electronics (Technology) Aircraft Maintenance Technology Appliance Repair Auto Mechanics Drafting Graphic Arts Machine Shop |

The Somerset State Vocational Technical School participates in a federally funded Comprehensive Educational Training program offering auto body repair, secretarial training, business education, diesel mechanics, machinist, and welding to individuals chosen by the employment services office for training in these areas.

Arrangements can be made to provide training in the specific production skills required by an industrial plant. Instruction may be conducted either in the vocational school or in the industrial plant, depending upon the desired arrangement and the availability of special equipment.

Colleges and Universities

| <u>Name</u> | <u>Area - Within 60 Miles</u> | | |
|----------------------------------|-------------------------------|------------------------------------|-------------------------------------|
| | <u>Location</u> | <u>Enrollment (Fall, 1974)</u> | <u>Highest Degree Conferred</u> |
| Somerset Community College | Somerset | 661 | Associate |
| Sue Bennett Junior College | London | 175 | Associate |
| Berea College | Berea | 1,411 | Baccalaureate |
| Centre College | Danville | 796 | Baccalaureate |
| Lindsey Wilson Junior College | Columbia | 308 | Associate |
| Cumberland College | Williamsburg | 1,777 | Baccalaureate |
| Eastern Kentucky University | Richmond | 12,571 | Masters, Ph. D.* |

*Cooperative program with the University of Kentucky, Lexington, for a Ph. D. in Education only.



SOMERSET COMMUNITY COLLEGE

HEALTH

Hospitals

| <u>General Hospital</u> | <u>Location</u> | <u>Beds</u> |
|-------------------------|-----------------|-------------|
| Somerset City Hospital | Somerset | 113 |

General hospital facilities - Physical therapy, radiology (X-ray), including nuclear medicine, pathology (laboratory), blood bank, recovery room, coronary care unit; 3 emergency rooms with observation room, outpatient service serving approximately 36,000 patients annually, 5 operating rooms, drug room, medical records, inhalation therapy, maintenance, laundry, home health service for a 10-county area; training facility for nursing students from Berea College, for students obtaining associate degrees in nursing and medical laboratory technicians from Somerset Community College, and vocational training for nurses aides, orderlies, ward clerks, obstetrical aides, surgical technicians and home health personnel; center for Region 14 Emergency Medical Communications Plan (HEAR).

Medical staff - 27 physicians (full time), 25 physicians (courtesy), 8 dentists, 51 registered nurses, 30 licensed practical nurses, 3 honorary members of medical staff, 3 emergency room physicians (2 full time, 1 part time), 302 full-time employees, * 65 part-time employees.*

Other Medical Facilities

Lake Cumberland Comprehensive Care Center (outpatient services), Somerset

Medical staff - Director of Mental Retardation and Development Disabilities Services, alcoholism-drug abuse director, mental health educator, mental health associate, psychologist, psychiatrist, psychiatric nurse, school consultant, clinical coordinator, area-team coordinators

Oakwood State Hospital and School

*These include employees in the home health agency which is a department of the Somerset City Hospital.



SOMERSET CITY HOSPITAL

Ambulance Service

A-1-A Ambulance Service

Staff - 6 (4 Emergency Medical Technicians)

Equipment - 2 ambulances, fully equipped

Personnel training - Emergency Medical Training, Red Cross Advanced First Aid, Civil Defense Self-Help Course

Nursing Homes

Number of Homes

4

Number and Type of Beds

142 personal care

69 extended care

Public Health

Facility - Pulaski County Health Center*

Staff - (Local) 5 registered nurses, 1 licensed practical nurse, 1 family planning aide, 1 sanitarian, 1 sanitarian-helper, 2 milk inspectors, 2 plumbing inspectors (1 full time, 1 part time), 4 clerks; (District-wide) medical director, doctor, 2 administrators, nurse-midwife, nutritionist, health educator, pediatric nurse, family planning nurse, nursing supervisor, sanitarian supervisor, clerical supervisor, administrative secretary, 5 clerks

Programs - Services include immunization, nursing services, health education, dental health, family planning, maternal and infant care, screening programs, tuberculosis control, communicable and chronic disease control, methadone maintenance, environmental health, nutritional-supplemental food program

*Pulaski County Health Center is a part of the Lake Cumberland District Health Department with headquarters in Somerset.

OTHER LOCAL FACILITIES

| <u>Communications</u> | <u>Somerset</u> | <u>Burnside</u> |
|--------------------------------------|---|--|
| Telephone - Services - | General Telephone Company of Kentucky Standard | General Telephone Company of Kentucky Standard |
| Telegraph - Services - | Western Union Telephone | Nearest office at Somerset |
| Postal - U. S. Post Office | | |
| Class - | First | Second |
| Mail received - | Once daily | Once daily |
| Mail dispatched - | Once daily | Once daily |
| Newspapers - | | |
| Daily and circulation - | The Commonwealth Journal, 10,350 | |
| Weekly and circulation - | The Observer, 2,800 | |
| Other papers received from - | Lexington and Louisville, Kentucky | Somerset, Louisville, and Lexington, Kentucky |
| Radio - | WSFC-AM, WSEK-FM, and WTLO-AM | |
| Stations received from - | Lexington and Louisville, Kentucky; Knoxville, Tennessee | Somerset, Lexington, and Louisville, Kentucky; Knoxville, Tennessee |
| Television - | | |
| Cable service | | |
| Reception from - | Lexington, Louisville, and Bowling Green, Kentucky; Knoxville, Tennessee | Lexington, Kentucky; Knoxville, Tennessee |
| Kentucky Educational Television - | Somerset transmitter, Channel 29 | Somerset transmitter, Channel 29 |



PULASKI COUNTY PUBLIC LIBRARY

Library Services

Public library - Pulaski County Public Library

Size collection - 33,800 volumes

Circulation, 1973-74 - 110,664 volumes*

Services - Magazines, records, tapes, filmstrips, paintings, cassettes, newspapers, copy and mimeograph service, microfilm reader-printer, movie projector, slide projector, story hour programs, two book mobiles, interlibrary loan, community room, aid to the blind and handicapped in securing talking books, and a ramp and elevator for the handicapped

Public library - Burnside Public Library

Size collection - 4,000 volumes

Services - Magazines, records, copy service, interlibrary loan, story hour, community room

Private library - Somerset Community College Library

Size collection - 25,000 volumes

Services - Magazines, newspapers, records, record players, slides, slide projectors, cassettes, cassette recorder-player, filmstrips, movies, movie projector, microfilm, tape recorder player, interlibrary loan, copy service, collection of transparencies for overhead projectors, Courier-Journal, New York Times, and Commonwealth Journal on microfilm

| <u>Religious Institutions</u> | <u>Somerset</u> | <u>Burnside</u> |
|-------------------------------|------------------------------------|-----------------|
| Number of churches - | 30 | 3 |
| Denominations - | Assembly of God | Baptist |
| | Baptist | Christian |
| | Catholic | Methodist |
| | Christian | |
| | Church of Christ | |
| | Church of God | |
| | Church of God of Prophecy | |
| | Episcopal | |
| | Lutheran | |
| | Methodist | |
| | Presbyterian | |
| | Seventh Day Adventist | |
| | Jehovah's Witnesses | |
| Nearest synagogues - | Lexington, 106 miles from Somerset | |
| Congregations - | Adath Israel (reform) | |
| | Ohavey Zion (traditional) | |

*Burnside Public Library circulation included.

Financial Institutions

Statement as of December 31, 1974

| <u>Banks</u> | <u>Assets</u> | <u>Deposits</u> |
|---------------------------------|-----------------|-----------------|
| Bank of Somerset | \$ 6,399,477.42 | \$ 5,589,108.78 |
| Citizens National Bank | 33,160,629.80 | 28,953,750.91 |
| First and Farmers National Bank | 80,218,685.00 | 70,873,890.00 |

| <u>Savings and Loan Associations</u> | <u>Assets</u> | <u>Shared Accounts</u> |
|---|-----------------|------------------------|
| American Federal Savings and Loan Association | \$ 4,098,717.00 | \$ 3,664,040.00 |
| Mutual Federal Savings and Loan Association | 38,000,205.47 | 31,283,731.33 |

Accommodations

Somerset-Burnside Area

Total number - 21
Units - 593

Clubs and Organizations

Somerset

Business and Civic - Somerset-Pulaski County Chamber of Commerce, Humane Society, Jaycees, Kiwanis Club, Lions Club, Rotary Club, Industrial Foundation, Tourist Commission, Historical Society, PTA, Somerset Civic Orchestra Association

Fraternal - American Legion, Masons, VFW, IOOF

Women's - Business and Professional Women's Club, Chautauqua Club, Jaycettes, Junior Woman's Club, Literary Club, Woman's Club, Eastern Star, Garden Club, D. A. R., Homemakers

Youth - Babe Ruth League, Boy Scouts, Girl Scouts, 4-H Club, Little League

Other - Friends of the Library, Big Brothers-Big Sisters, Pulaski County Ministerial Association, YMCA

Burnside

Business and Civic - Burnside Area Chamber of Commerce, Lions Club

Fraternal - Masonic Lodge

Women's - Eastern Star, Homemakers, Woman's Civic Club, Cumberland Garden Club

Youth - Babe Ruth League, Boy Scouts, * Girl Scouts, Cub Scouts, Key Club, Little League, Beta Club

Other - General Burnside Island Golf Club

*Burnside is the birthplace of the Boy Scouts of America.

RECREATION

Local

Somerset-Burnside Area

Public Recreation Facilities

Supervised program - Somerset and Burnside

Parks - Pulaski County Park and Cole Park

Playgrounds - 8

Swimming pool - YMCA pool, Somerset

Golf course - 18-hole course, Burnside Island

Tennis courts - 4

Baseball diamonds - 4

Football field - 1

Other - 11 U. S. Army Corps of Engineers Recreation Areas within the county (include launching ramps, camping facilities and picnic areas)

Private Recreation Facilities

Country club - 1

Golf course - 1 par-3 (lighted)

Swimming pool - 1

Movie theaters - 2 indoor, 2 drive-ins

Bowling facility - 1

Other - Roller skating rink, billiards, tennis court, miniature golf and driving range

Tourist Attractions

General Burnside State Park

Lake Cumberland

Daniel Boone National Forest

Annual North-South Championship Outboard Boat Regatta

Cultural Events

Somerset Civic Orchestra

Cumberland Players, Inc.

Children's Theatre

Area (Within 50 miles)

Cumberland Falls State Resort Park

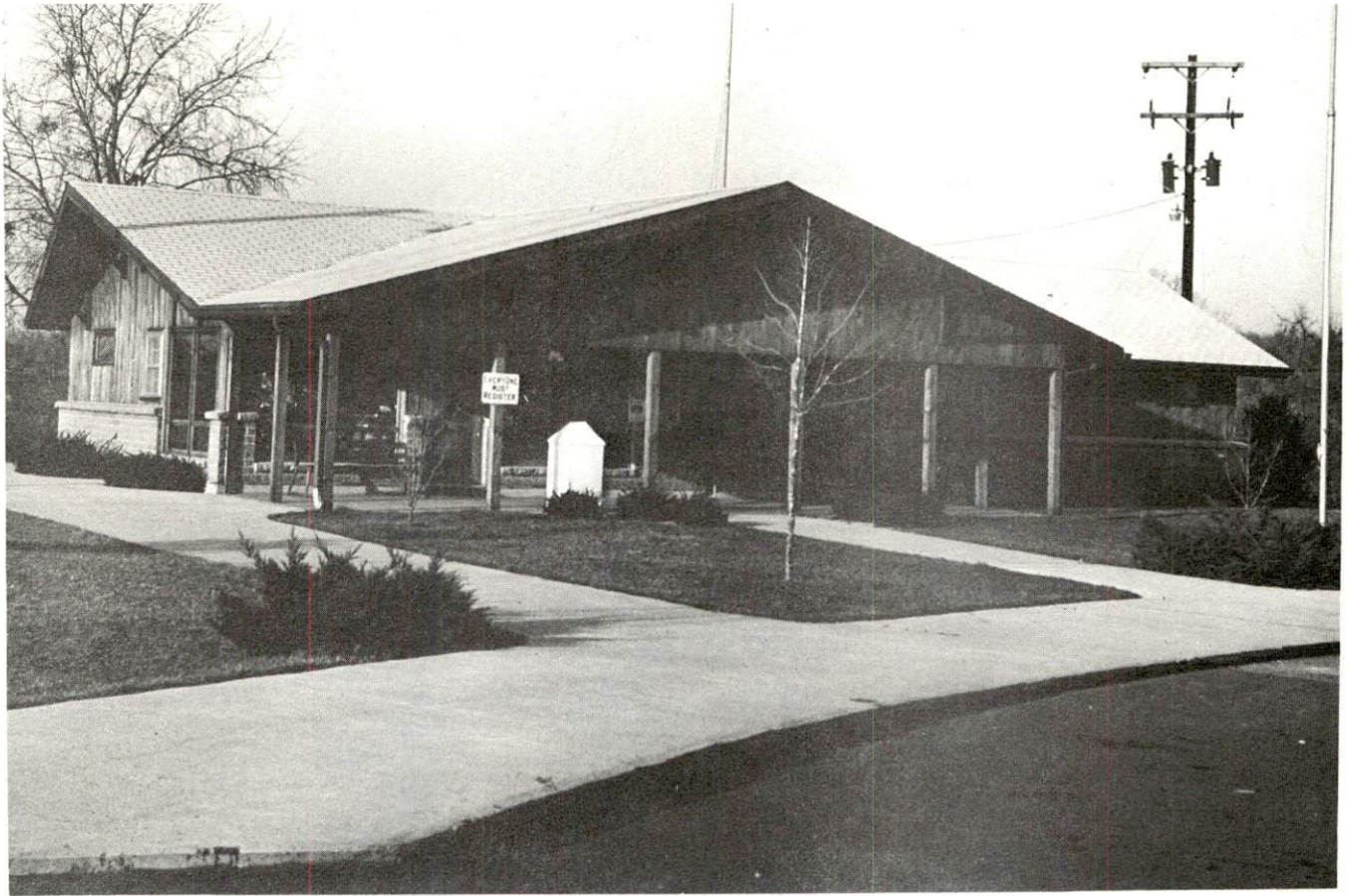
Lake Cumberland State Resort Park

Levi Jackson Wilderness Road State Park

Constitution Square State Shrine

Isaac Shelby State Shrine

William Whitley House State Shrine



GOLF PRO SHOP
GENERAL BURNSIDE ISLAND STATE PARK



BOAT STORAGE
BURNSIDE FISHING DOCK

AGRICULTURE - NATURAL RESOURCES - CLIMATE

Agriculture*

| | <u>Pulaski County</u> | <u>Labor Market Area</u> |
|---------------------------------------|-----------------------|------------------------------|
| Total land area (acres) | 418,176 | 2,099,968 |
| Percent of area in farm land | 57.5 | 58.0 |
| Number of farms | 2,839 | 12,869 |
| Average size of farms (acres) | 84.7 | 94.6 |
| 1969 value of all farm products | \$10,832,424 | \$52,212,153 |
| Value per farm | 3,815 | 4,057 |
| Total crop sales | 4,048,243 | 21,448,851 |
| Total livestock & livestock products | 6,701,023 | 30,264,368 |
| 1972 agriculture production included: | | |
| Burley tobacco (lbs.) (est.) | 4,681,000 | 24,170,000 |
| Corn for grain (bu.) | 1,083,600** | 4,392,600** |
| Cattle and calves (number) | 69,100** | 284,300** |
| Hogs and pigs (number) | 13,000** | 75,800** |
| Milk production, 1971 (lbs.) | 65,800,000 | 243,800,000*** |

Natural Resources

| | |
|---------------------------------|--|
| Principal mineral resources | Coal, stone, and petroleum |
| Acres of commercial forest land | 209,800 |
| Most abundant tree species | White oak, red oak, hickory, yellow pine, yellow poplar, beech, and hard maple |

*U. S. Department of Commerce, Bureau of the Census, Census of Agriculture, 1969. U. S. Department of Agriculture and Kentucky Department of Agriculture, Kentucky Agricultural Statistics, 1972.

**Preliminary figures.

***Milk production for McCreary County is not included.

Climate*

Pulaski County

Temperature

| | |
|--|---------------|
| Annual mean (30-year record) | 59.7 degrees |
| Average annual 1973 | 59.2 degrees |
| Record highest, August, 1968 (13-year record) | 99.0 degrees |
| Record lowest, January, 1966 (13-year record) | - 9.0 degrees |
| Normal heating degree days (30-year record) (Heating degree day totals are the sums of negative departures of average daily temperatures from 65° F.) | 3,478 |

Precipitation

| | |
|---|--------------|
| Mean annual total (30-year record) | 46.18 inches |
| Mean annual snow and sleet (31-year record) | 13.00 inches |
| Total precipitation 1973 | 58.03 inches |
| Mean number days precipitation (.01 inch or more) (31-year record) | 128 |
| Average number days thunderstorms (31-year record) | 48 |

Prevailing winds (14-year record) Northeast

*U. S. Department of Commerce, Environmental Science Services
Administration, Climatological Data, 1973. Station of record:
Knoxville, Tennessee.

HISTORY

Pulaski County is located in the south central part of Kentucky on the southwestern edge of the Eastern Kentucky Coal Fields and covers 653 square miles of territory. Approximately one-half of the eastern border follows Rockcastle River, and a portion of Lake Cumberland lies to the south. The land surface is gently rolling in the northern and western areas and hilly to mountainous in the south and east. A portion of the county lies within the boundaries of Daniel Boone National Forest.

Early settlements in Pulaski County beginning about 1780 were made along the streams of the area. Among the first settlers were John Newby, William Owens, Samuel Newell and Nicholas Jasper. After the Revolutionary War, several Virginia soldiers moved into the area, and the population grew rapidly. In 1798 Pulaski became Kentucky's twenty-seventh county, named for Count Joseph Pulaski, a distinguished Pole who entered the American service and was commissioned Brigadier General during the Revolution.

Somerset, the county seat, was established in 1801 and is at the geographical center of the county. It is named for Somerset County in England, from which some of its settlers came. Somerset, an important economic center, had a population of over 10,000 in 1970. Somerset Community College had an enrollment of 690 in 1972.

Burnside, the county's second largest town, with a population of 586 in 1970, was named for General A. E. Burnside, a Union General stationed there during the Civil War. Burnside was an important river and railroad shipping point during the 1800's and had a stagecoach line in operation until the early 1900's.

In 1850, Pulaski County had a population of 14,195. By 1950 this had climbed to 38,452, followed by a decline in the next decade to 34,403 in 1960. Due to industrial growth, however, the trend was reversed in the 1960's for a total of 35,234 in 1970.

Agriculture accounted for 1,790 of the county's 15,360 employed in 1973, with burley tobacco, corn, cattle, hogs, and milk the principal products. Manufacturing employed 3,560. Largest of the county's firms are Tecumseh Products Company, which makes compressors for air conditioners, Lear Siegler, Inc., which produces automobile seat frames and automobile seat assemblies, and Palm Beach Company, which manufactures men's coats.

Highway transportation in the county has been significantly improved with the completion of the Cumberland Parkway. Excellent recreational facilities are available at General Burnside State Park, and Lake Cumberland makes the area a popular tourist attraction.

Among the prominent citizens of Pulaski County is John Sherman Cooper, one of Kentucky's leading political figures. Mr. Cooper is a former Ambassador to India, served several terms in the U. S. Senate, and is presently serving as the first U. S. Ambassador to East Germany.

This copy has been prepared by the Kentucky Department of Commerce,
Division of Research and Planning, and the cost of printing paid from
state funds.