

1983

Industrial Resources: Rowan County - Morehead

Kentucky Library Research Collections
Western Kentucky University, spcol@wku.edu

Follow this and additional works at: https://digitalcommons.wku.edu/rowan_cty

 Part of the [Business Administration, Management, and Operations Commons](#), [Growth and Development Commons](#), and the [Infrastructure Commons](#)

Recommended Citation

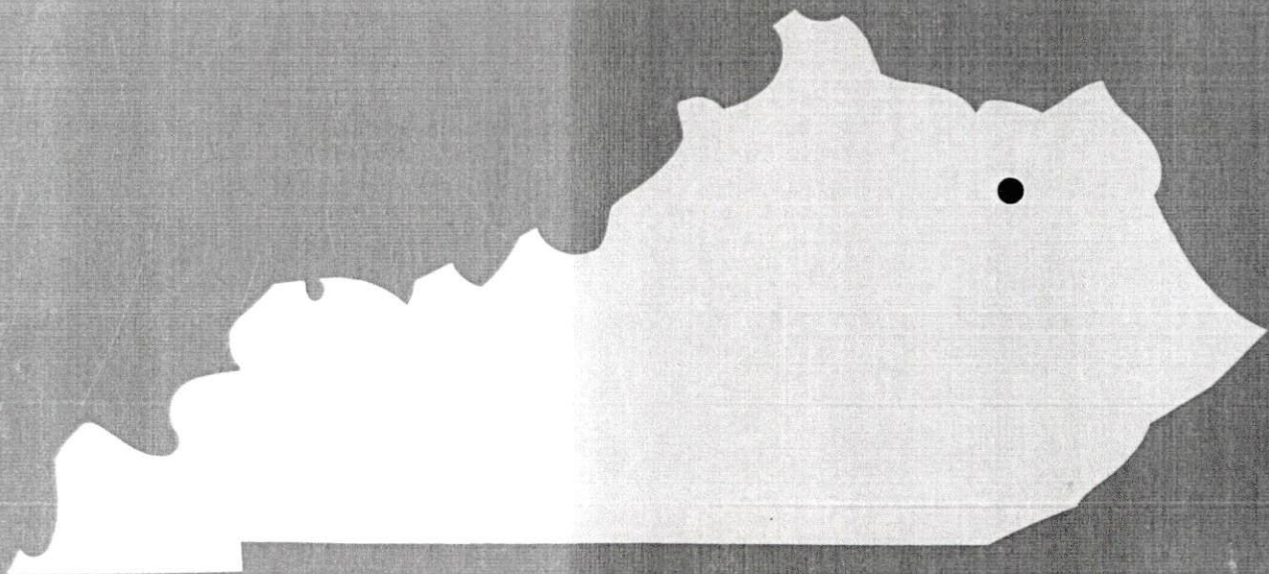
Kentucky Library Research Collections, "Industrial Resources: Rowan County - Morehead" (1983). *Rowan County*. Paper 6.
https://digitalcommons.wku.edu/rowan_cty/6

This Report is brought to you for free and open access by TopSCHOLAR®. It has been accepted for inclusion in Rowan County by an authorized administrator of TopSCHOLAR®. For more information, please contact topscholar@wku.edu.

IR ROWAN
354

1983

A comprehensive
report on
Morehead, Ky.

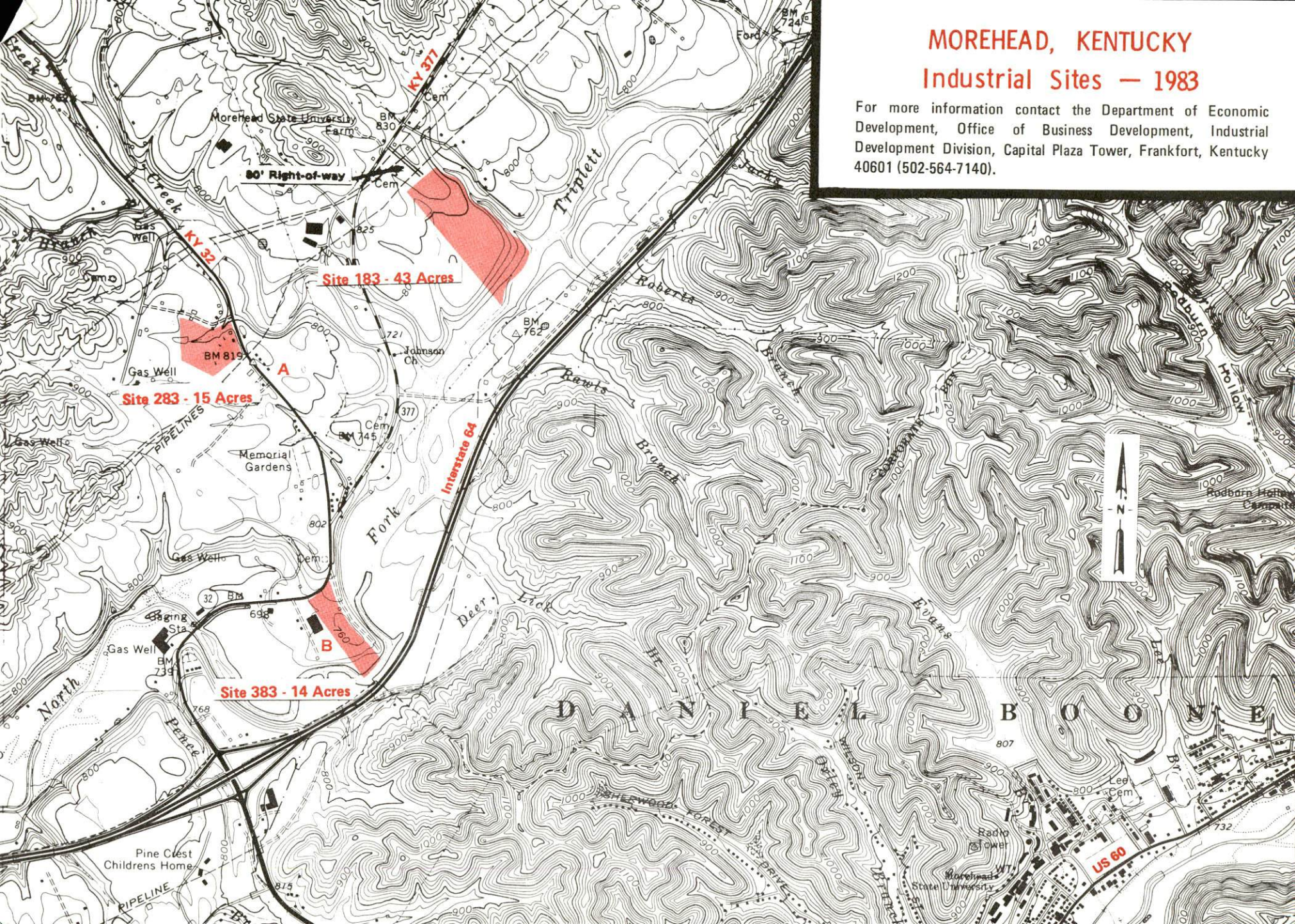


KENTUCKY & CO.
The state that's run like a business.

MOREHEAD, KENTUCKY

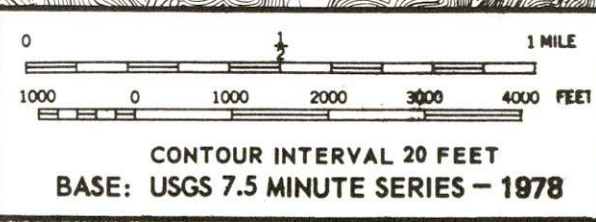
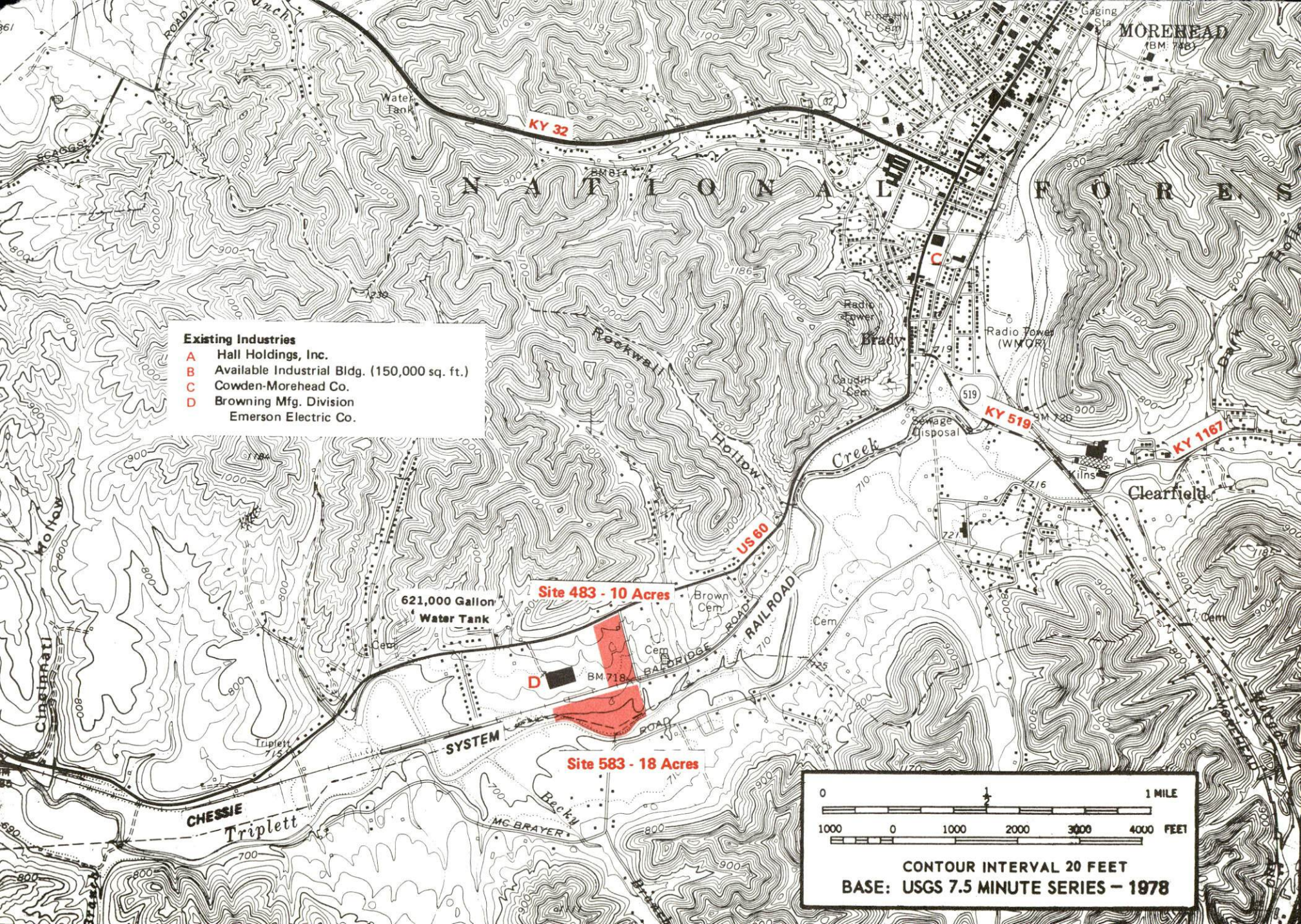
Industrial Sites — 1983

For more information contact the Department of Economic Development, Office of Business Development, Industrial Development Division, Capital Plaza Tower, Frankfort, Kentucky 40601 (502-564-7140).



Existing Industries

- A** Hall Holdings, Inc.
- B** Available Industrial Bldg. (150,000 sq. ft.)
- C** Cowden-Morehead Co.
- D** Browning Mfg. Division
Emerson Electric Co.



A COMPREHENSIVE REPORT ON
MOREHEAD, KENTUCKY

Prepared by
The Kentucky Department of Economic Development
Division of Research and Planning
in cooperation with
The Morehead-Rowan County Chamber of Commerce

1983

TABLE OF CONTENTS

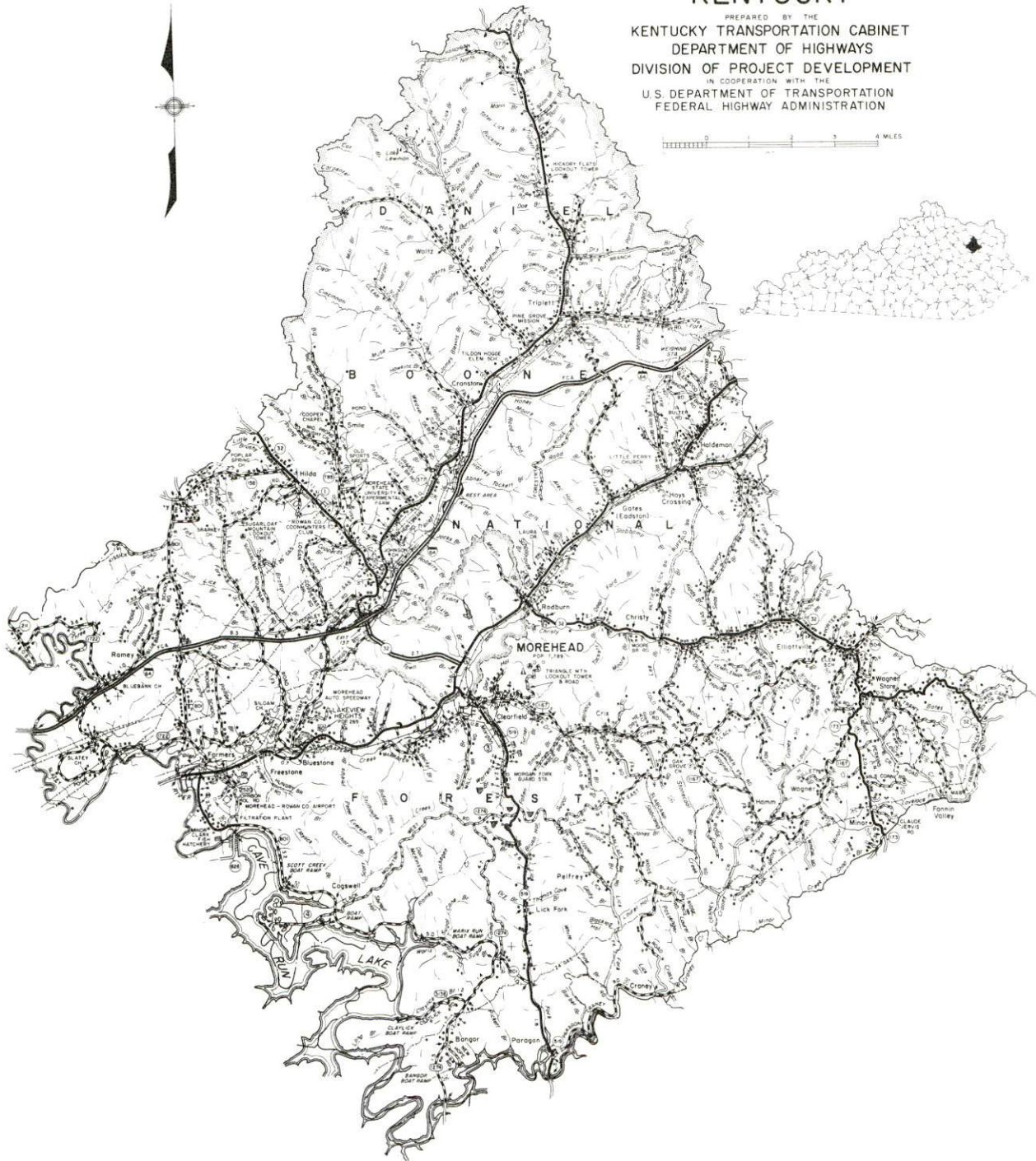
<u>Chapter</u>	<u>Page</u>
INDUSTRIAL SITES	i
MOREHEAD, KENTUCKY - A RESOURCE PROFILE	1
THE LABOR MARKET AREA	3
Population	3
Labor Force Characteristics of Residents, 1982	3
Selected Components of Nonagricultural Employment, by Place of Work, 1982	4
Morehead Manufacturing Firms, Their Products and Employment	5
Labor Organizations in Manufacturing Firms	6
Industrial Services	7
Estimated Male Labor Supply	8
Estimated Female Labor Supply	9
Average Weekly Wages by Industry, by Place of Work, 1982	10
Per Capita Personal Income	12
TRANSPORTATION	13
Rail	13
Highways	13
Truck Service	14
Air	15
Bus	16
Taxi	16
Rental Services	16
Water	16
POWER AND FUEL	17
Electricity	17
Natural Gas	18
Other Fuels	19
WATER AND SEWERAGE	20
Public Water Supply	20
Raw Water	21
Sewerage	22
CLIMATE	23

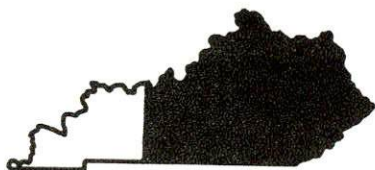
<u>Chapter</u>	<u>Page</u>
LOCAL GOVERNMENT	24
City	24
County	24
Assessed Value of Property, 1982	24
Property Taxes	25
Combined State and Local Rates Per \$100 Valuation, 1982	25
Utilities Gross Receipts Tax for Schools	26
Planning and Zoning	26
Safety	26
Police	26
Fire	26
Rescue Service	27
Refuse Collection and Disposal	27
EDUCATION	28
Public Schools	28
Area Colleges and Universities	29
Vocational Schools	30
HEALTH	32
Local Medical Personnel	32
Hospitals	32
Other Medical Facilities	33
Ambulance Service	33
Public Health	33
OTHER LOCAL FACILITIES	34
Communications	34
Library Services	34
Religious Institutions	35
Financial Institutions	35
Hotels and Motels	35
Clubs and Organizations	36
RECREATION	37
COMMUNITY IMPROVEMENTS	39

1983 EDITION
GENERAL HIGHWAY MAP
ROWAN COUNTY
KENTUCKY

PREPARED BY THE
KENTUCKY TRANSPORTATION CABINET
DEPARTMENT OF HIGHWAYS
DIVISION OF PROJECT DEVELOPMENT
IN COOPERATION WITH THE
U.S. DEPARTMENT OF TRANSPORTATION
FEDERAL HIGHWAY ADMINISTRATION

0 1 2 3 4 MILES

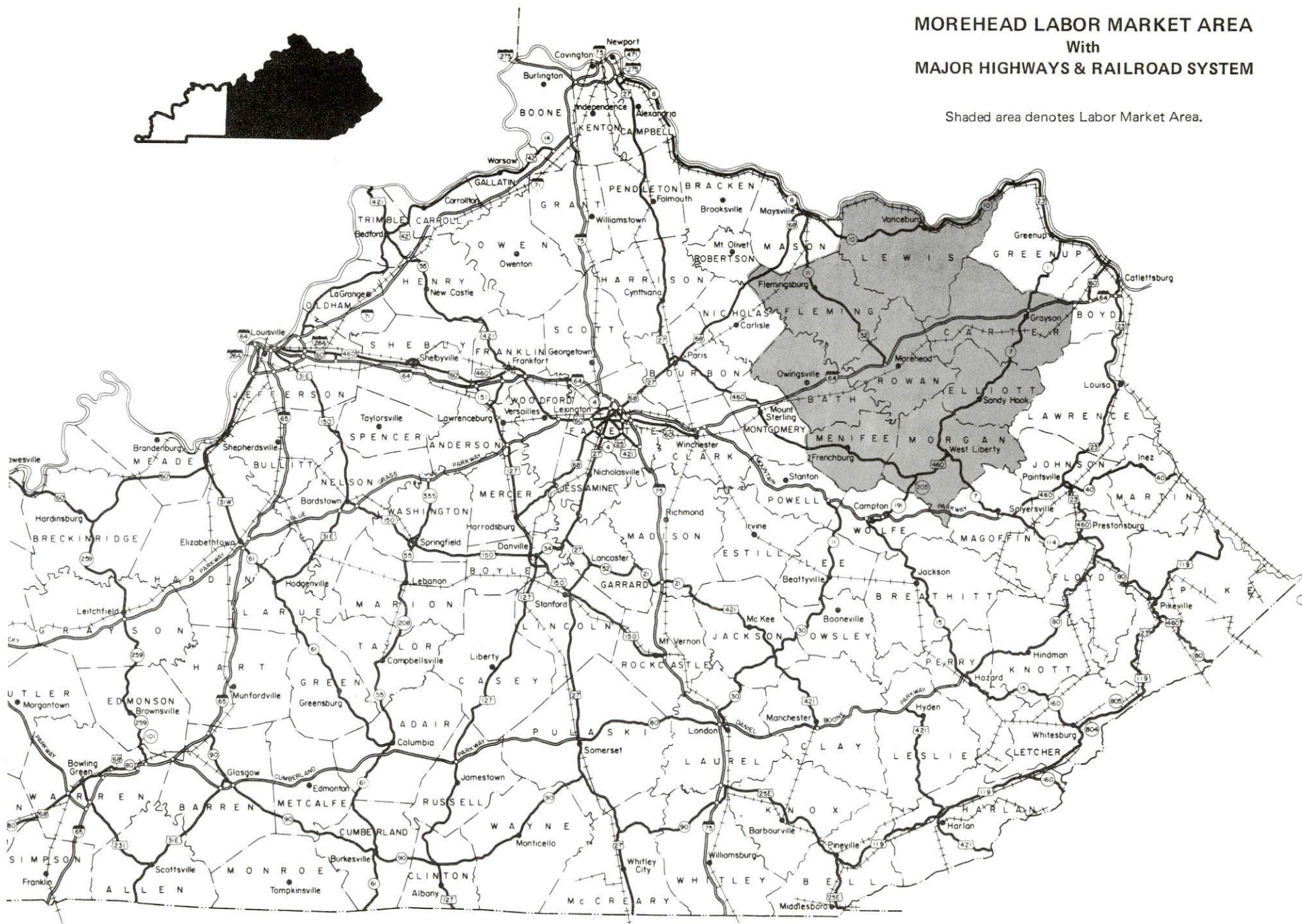




MOREHEAD LABOR MARKET AREA

With
MAJOR HIGHWAYS & RAILROAD SYSTEM

Shaded area denotes Labor Market Area.



MOREHEAD, KENTUCKY - A RESOURCE PROFILE

Morehead, the county seat of Rowan County and home of Morehead State University, is located in northeastern Kentucky along the western edge of the Appalachian Mountains. Morehead, with a 1980 population of 7,789, is 65 miles east of Lexington, Kentucky; 65 miles west of Huntington, West Virginia; 138 miles east of Louisville, Kentucky; and 143 miles southeast of Cincinnati, Ohio.

Rowan County covers 282 square miles and lies within the northernmost section of the Daniel Boone National Forest. In 1980, Rowan County had population of 19,049.

The Economic Framework

The total number of Rowan County residents employed in 1982 averaged 7,550, with nonagricultural jobs accounting for 7,330 workers. Manufacturing employers in the county reported 600 workers; wholesale and retail trade 1,170; state and local government 1,730; and 900 persons employed in service occupations. Manufacturing employment is greatest in the lumber and wood products, nonelectrical machinery, and apparel and related products industries.

Per capita personal income in Rowan County in 1981 was \$5,542. Between 1977 and 1981 per capita income increased by 42 percent.

The Morehead labor market area includes Rowan and the seven adjoining counties. The total number of residents of the labor market area employed in 1982 averaged 36,500, with nonagricultural jobs accounting for 33,060 workers. Manufacturing employers in the area reported 3,490 workers; wholesale and retail trade 3,650; state and local government 4,820; and 1,930 persons employed in service occupations.

Resources for Growth

1. Labor Supply - There is a current labor supply of 9,680 men and 6,815 women available for industrial jobs in the labor market area. In addition, from 1983 through 1987, 4,920 young men and 4,610 young women will become 18 years of age and potentially available for work.

2. Transportation - Railroad service is provided to Morehead by The Chessie System Railroads. Interstate 64 serves Morehead with an interchange three miles north of the city. Other major highways serving Morehead are U. S. 60 and Kentucky 32. Five common carriers have authority to serve Morehead. The nearest commercial airline service is available at Blue Grass Field, 70 miles to the west, near Lexington, Kentucky, or at Tri-State Airport, 60 miles to the east, near Huntington, West Virginia.

3. Power and Fuel - Electric power is provided to Morehead by Kentucky Utilities Company, an electric generation and transmission company. Rowan County is served electric power by the Kentucky Power Company, also a generation and transmission company; Grayson RECC; Clark RECC; and Fleming-Mason RECC. The three rural electric cooperative corporations are all supplied by East Kentucky Power Cooperative. Natural gas service is provided to Morehead by the Morehead Utility Plant Board and to parts of Rowan County by Delta Natural Gas Company. The source of supply for natural gas in the area is Tennessee Gas Pipeline Company. There are two distributors of propane and two distributors of fuel oil in Morehead.

4. Education - Primary and secondary education is provided to Morehead and Rowan County by the Rowan County School System which had an enrollment of 3,164 students in the spring of 1983.

Morehead State University offers more than 140 separate academic programs on the associate, baccalaureate and graduate levels. The university had a Fall 1982 headcount enrollment of 6,370. There are eight additional colleges and universities within 65 miles of Morehead.

The Ashland State Vocational-Technical School in Ashland, Kentucky, 59 miles east of Morehead, offers occupational training in 19 courses. The Rowan County Area Vocational Education Center in Morehead offers training in 10 courses. A state vocational-technical school is under construction in Morehead and scheduled for completion in January 1984.

THE LABOR MARKET AREA

The Morehead Labor Market Area includes Rowan County and the adjoining Kentucky counties of Bath, Carter, Elliott, Fleming, Lewis, Menifee and Morgan.

POPULATION

<u>Area</u>	<u>1980</u>	<u>1970</u>	<u>Percent Nonwhite</u>
Morehead	7,789	7,191	4.3
Labor Market Area	105,130	89,818	N/A
Rowan County	19,049	17,010	2.1
Bath County	10,025	9,235	3.3
Carter County	25,060	19,850	0.2
Elliott County	6,908	5,933	0.01
Fleming County	12,323	11,366	1.9
Lewis County	14,545	12,355	0.3
Menifee County	5,117	4,050	1.3
Morgan County	12,103	10,019	0.4

Note: The 1980 counts of population by race are provisional.

Sources: U. S. Department of Commerce, Bureau of the Census, 1980 Census of Population and Housing, March 1981; 1980 Census of Population, Number of Inhabitants. Population Research Unit, Urban Studies Center, University of Louisville, Kentucky Demographics: The 1980 Census of Kentucky, Characteristics of Population, Households, Housing, January 1982.

LABOR FORCE CHARACTERISTICS OF RESIDENTS, 1982

	<u>Rowan County</u>	<u>Labor Market Area</u>
Civilian Labor Force	8,419	42,829
Employment	7,549	36,499
Agricultural	215	3,437
Nonagricultural	7,334	33,062
Unemployment	870	6,330
Rate of Unemployment (%)	10.3	14.8

Source: Kentucky Cabinet for Human Resources, Kentucky Labor Force Estimates, Annual Averages, 1982.

SELECTED COMPONENTS OF NONAGRICULTURAL EMPLOYMENT,
BY PLACE OF WORK, 1982

	<u>Rowan County</u>	<u>Labor Market Area</u>
All Industries (total)	4,885	16,541
Manufacturing	601	3,486
Wholesale & Retail Trade	1,166	3,654
Services	897	1,926
State/Local Government	1,728	4,821
Contract Construction	139	503

Note: Excludes domestic workers, railway workers, certain nonprofit corporations, majority of federal government workers, and self-employed workers.

Source: Kentucky Cabinet for Human Resources, Average Monthly Workers Covered by Kentucky Unemployment Insurance Law, 1982.

MOREHEAD MANUFACTURING FIRMS,
THEIR PRODUCTS AND EMPLOYMENT

Firm (Establishment date)	Product	Employment			Labor Unions
		Total	Male	Female	
Alexanders Red Cottage Gallery, Inc. (1965)	Picture and mirror frames	2	1	1	
B & W Pallet Company (1965)	Pallets, lumber, sawdust	17	16	1	
Big Sandy Ready Mix Concrete, Inc. (1974)	Ready-mix concrete	6	-	-	
Browning Manufacturing Division, Emerson Electric Company (1975)	Bearing units, iron bushings, sheaves	159	-	-	
Cloud Concrete Products Company (1971)	Concrete products	3	3	0	
Cowden-Morehead Company (1953)	Men's and boys' slacks, ladies' and girls' slacks	165	20	145	Aluminum, Brick and Glass Workers*
East Kentucky Paving Corporation (1968)	Asphalt	30	30	0	
Hall Holdings, Inc. (1983)	Mine support systems, tooling	150	-	-	
Homer Gregory Company, Inc. (1944)	Rough lumber, dimension stock, pallets	58	56	2	
Ken-Mor Stone Company, Inc. (1964)	Crushed lime-stone	69	65	4	Steelworkers*
Mor Wood Sawmill, Inc. (1980)	Hardwood lumber, wood pallets, wood boxes	8	7	1	
The Morehead News (1894)	Newspaper, commercial job printing	31	13	18	

(Contd.)

<u>Firm (Establishment date)</u>	<u>Product</u>	<u>Employment</u>			<u>Labor Unions</u>
		<u>Total</u>	<u>Male</u>	<u>Female</u>	
Spring Grove Dairy (1950)	Fluid milk, ice milk	39	35	4	Teamsters*
J. C. Wells and Sons, Inc. (1953)	Pallets, hard- wood lumber, fencing boards	46	45	1	
Harold White Lumber, Inc. (1968)	Kiln dried lumber, hardwoods	41	38	3	
Ray L. White & Sons, Inc. (1952)	Furniture lumber, surfaced hardwood, wood pallets	30	28	2	

*See Labor Organizations below.

Source: Kentucky Department of Economic Development, Division of Research and Planning.

LABOR ORGANIZATIONS IN MANUFACTURING FIRMS

<u>Union</u>	<u>Representing workers at:</u>
Aluminum, Brick and Glass Workers International Union, AFL-CIO	Cowden-Morehead Company
International Brotherhood of Teamsters, Chauffeurs, Warehousemen and Helpers of America	Spring Grove Dairy
United Steelworkers of America, AFL-CIO	Ken-Mor Stone Company

INDUSTRIAL SERVICES

<u>Types of Services</u>	<u>Location</u>	<u>Mileage from Morehead</u>
Custom Plastics Producers	Mt. Sterling, Kentucky	31
Electric Motor Repair	Lexington, Kentucky	65
	Huntington, West Virginia	65
Grinding, Precision & Tool	Huntington, West Virginia	65
	Richmond, Kentucky	67
Heat Treating Facilities	Lexington, Kentucky	65
	Richmond, Kentucky	67
Industrial Equipment & Supplies	Lexington, Kentucky	65
Industrial Gases	Lexington, Kentucky	65
	Huntington, West Virginia	65
Industrial Waste Removal	Ashland, Kentucky	59
	Lexington, Kentucky	65
Machine Shops, Tool & Die	Mt. Sterling, Kentucky	31
Metal Finishers	Lexington, Kentucky	65
	Richmond, Kentucky	67
Metal Service Centers	Lexington, Kentucky	65
	Huntington, West Virginia	65
Millwrights	Lexington, Kentucky	65

Sources: Kentucky Department of Economic Development, Kentucky Directory of Selected Industrial Services, 1983. Kentucky Department of Economic Development, Division of Research and Planning.

ESTIMATED MALE LABOR SUPPLY
MOREHEAD LABOR MARKET AREA

Area	Current			Future	
	Total	Unemployed	Under- employed	Not in Labor Force	Becoming 18 years of age 1983 thru 1987
Labor Market Area*	9,684	3,993	2,900	2,791	4,918
Rowan	1,788	587	1,201	0	742
Bath	949	423	191	335	451
Carter	2,428	1,253	367	808	1,220
Elliott	456	296	160	0	347
Fleming	708	300	196	212	546
Lewis	1,387	431	298	658	788
Meniffee	788	232	79	477	277
Morgan	1,180	471	408	301	547

*Additional workers may be drawn from other nearby counties.

Note: Unemployed - persons unemployed and actively seeking work; Underemployed - persons employed but working only 14 to 26 weeks per year. Not in Labor Force - represents the number of persons who would enter the labor force if suitable employment were available (based on the assumption that persons in Kentucky would like to participate in the labor force in the same proportion that they do nationally).

Sources: Kentucky Cabinet for Human Resources, Kentucky Labor Supply Estimates by Area Development District and County, 1981. Kentucky Department of Economic Development, Future Labor Supply Becoming 18 Years of Age, 1983 thru 1987.

ESTIMATED FEMALE LABOR SUPPLY
MOREHEAD LABOR MARKET AREA

Area	Current			Future	
	Total	Unemployed	Under-employed	Not in Labor Force	Becoming 18 years of age 1983 thru 1987
Labor Market Area*	6,815	1,735	2,141	2,939	4,607
Rowan	1,190	240	950	0	735
Bath	510	173	195	142	407
Carter	2,219	364	283	1,572	1,179
Elliott	359	86	81	192	317
Fleming	659	241	179	239	551
Lewis	978	334	219	415	671
Menifee	395	95	60	240	226
Morgan	505	192	174	139	521

*Additional workers may be drawn from other nearby counties.

Note: Unemployed - persons unemployed and actively seeking work; Underemployed - persons employed but working only 14 to 26 weeks per year. Not in Labor Force - represents the number of persons who would enter the labor force if suitable employment were available (based on the assumption that persons in Kentucky would like to participate in the labor force in the same proportion that they do nationally).

Sources: Kentucky Cabinet for Human Resources, Kentucky Labor Supply Estimates by Area Development District and County, 1981. Kentucky Department of Economic Development, Future Labor Supply Becoming 18 Years of Age, 1983 thru 1987.

AVERAGE WEEKLY WAGES BY INDUSTRY
BY PLACE OF WORK, 1982

	<u>Rowan County</u>	<u>Bath County</u>	<u>Carter County</u>	<u>Elliott County</u>
All Industries	\$243.94	\$207.12	\$238.14	\$222.61
Mining & Quarrying	*	0	400.89	315.18
Contract Construction	331.83	277.49	406.84	*
Manufacturing	225.59	140.19	210.77	188.35
Transportation, Communications & Public Utilities	349.31	411.15	359.67	200.88
Wholesale & Retail Trade	162.22	152.30	172.29	128.49
Finance, Insurance & Real Estate	299.91	201.96	268.39	*
Services	241.95	131.06	198.33	132.95
State/Local Government	282.77	229.08	243.12	241.21
Other	116.65	*	144.95	0
	<u>Fleming County</u>	<u>Lewis County</u>	<u>Menifee County</u>	<u>Morgan County</u>
All Industries	\$208.83	\$182.75	\$210.25	\$236.63
Mining & Quarrying	*	0	*	427.55
Contract Construction	352.43	103.53	0	206.21
Manufacturing	192.21	168.75	*	171.37
Transportation, Communications & Public Utilities	337.07	202.78	198.85	299.72
Wholesale & Retail Trade	169.15	145.47	176.47	171.29
Finance, Insurance & Real Estate	228.04	229.22	*	247.51
Services	147.47	150.60	112.29	204.82
State/Local Government	235.93	227.86	234.84	261.56
Other	99.04	0	0	93.53

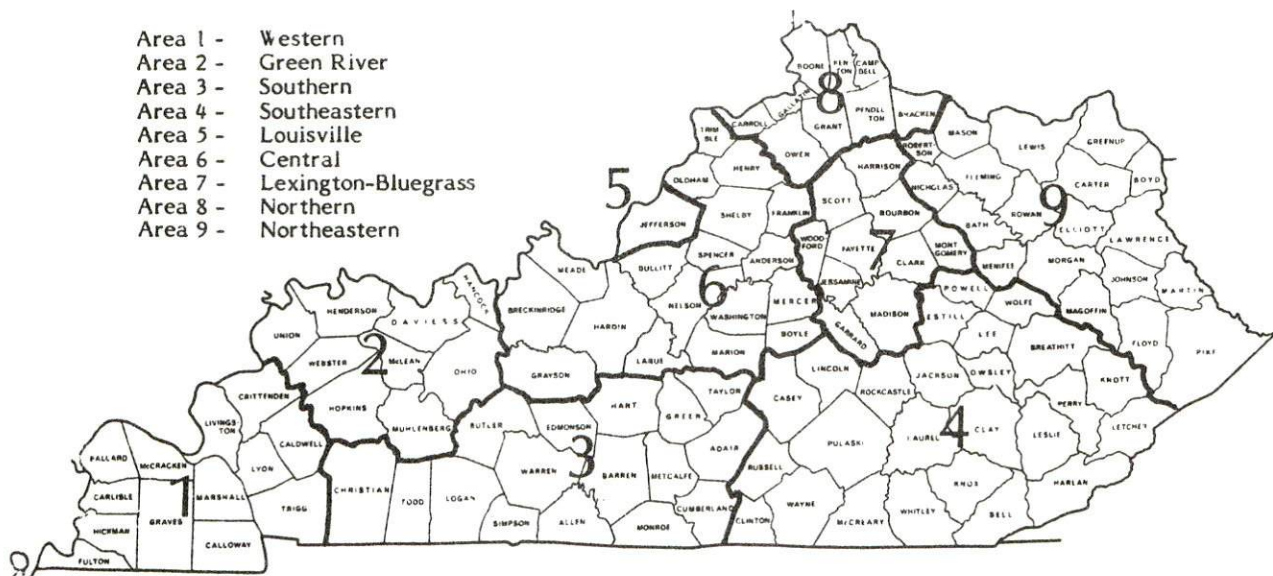
*Not disclosed.

Note: Excludes domestic workers, railway workers, certain nonprofit corporations, majority of federal government workers, and self-employed workers.

Source: Kentucky Cabinet for Human Resources, Average Weekly Wages of Workers Covered by Kentucky Unemployment Insurance Law, 1982.

Occupational wage rates for specific industries are usually not available to most government agencies, and wage data furnished to state employment agencies by individual industrial employers are protected from disclosure by federal law. The most reliable up-to-date wage information can be obtained by direct contact with local employers.

Associated Industries of Kentucky, a voluntary organization of Kentucky businesses, regularly collects occupational wage rates and fringe benefits data from participating member firms. Data are compiled for over 127 clearly defined office, production, and service occupations. Tabulations are published for nine geographical areas of Kentucky, as shown on the map below. It should be noted that the data may be weighted by the preponderance of firms in the larger cities and may be somewhat higher than the rates paid in the smaller communities. Data from these tabulations are available, upon request, from the Kentucky Department of Economic Development, Frankfort, Kentucky 40601.



Associated Industries of Kentucky Area Wage Surveys

PER CAPITA PERSONAL INCOME

<u>Area</u>	<u>1977</u>	<u>1981</u>	<u>Percent Change</u>
Rowan County	\$3,908	\$5,542	41.8
Labor Market Area Range	\$3,097 - 4,492	\$4,504 - 6,334	N/A
Kentucky	5,797	8,416	45.2
U. S.	6,984	10,495	50.3

Source: U. S. Bureau of Economic Analysis, Kentucky Economic Information System, May 1983.

TRANSPORTATION

Rail

Line serving Morehead - The Chessie System Railroads

Services - Main line; one westbound local freight stops as needed on Monday, Wednesday and Friday; one eastbound local freight stops as needed on Tuesday, Thursday, and Saturday; switching facilities; siding space for 60 cars. The nearest Chessie System piggyback facilities are in Louisville, Kentucky, 138 miles west of Morehead.

For details on routing, schedules, rates, and services, contact:

The Chessie System Railroads
Real Estate and Industrial Development Department
202 Dixie Terminal Building
Cincinnati, Ohio 45202
(513) 369-5258

Highways

The major highways serving Morehead are Interstate 64, U. S. 60 and Kentucky 32. Interstate 64, a major east-west route, serves Morehead with an interchange located 3 miles northwest of the city. Interstate 64 provides access to Interstate 75, a major north-south route, 59 miles west of Morehead. U. S. 60 and Kentucky 32 are both "AAA" rated (80,000-pound gross load limit) trucking highways. In addition, Kentucky 377 and Kentucky 519, both "AA" rated (62,000-pound gross load limit) trucking highways, serve Rowan County.

Truck Service

<u>Company</u>	<u>Home Office</u>
Budig Western*	1100 Gest Street Cincinnati, Ohio 45203
Dumont Trucking, Inc.**	P. O. Box 157 Oak Hill, Ohio 45656
Overnite Transportation Company*	1000 Semmes Avenue P. O. Box 1216 Richmond, Virginia 23209
Russell Transfer, Inc.*	5259 Aviation Drive Northwest Roanoke, Virginia 24012
Smith Transfer Corporation**	P. O. Box 1000 Staunton, Virginia 24401

*Interstate and intrastate service.

**Interstate service only.

Sources: American Motor Carrier Directory, Spring 1983. Kentucky
Department of Economic Development, Division of Research and Planning.

<u>Other Freight Services</u>	<u>Nearest Office or Shipping Center</u>
Emery	Lexington, 65 miles west
Federal Express Corporation	Lexington, 65 miles west
Purolator Courier Corporation	Ashland, 59 miles northeast
	Lexington, 65 miles west
United Parcel Service	Clay City, 46 miles southwest

HIGHWAY MILES AND TRUCK TRANSIT TIME IN DAYS FROM MOREHEAD, KENTUCKY, TO SELECTED MARKET CENTERS

<u>City</u>	<u>Highway Miles</u>	<u>Delivery Time TL</u>	<u>City</u>	<u>Highway Miles</u>	<u>Delivery Time TL</u>
Atlanta, Ga.	427	1	Los Angeles, Ca.	2,245	3
Baltimore, Md.	496	1	Louisville, Ky.	138	1
Birmingham, Ala.	463	1	Nashville, Tenn.	275	1
Chicago, Ill.	417	1	New Orleans, La.	792	2
Cincinnati, Ohio	143	1	New York, N. Y.	668	2
Cleveland, Ohio	358	1	Pittsburgh, Pa.	328	1
Detroit, Mich.	402	1	St. Louis, Mo.	400	1
Knoxville, Tenn.	228	1			

Note: Mileage computations are via the best interstate or primary highways,
not necessarily the most direct route of travel.

Sources: Rand McNally Road Atlas, 1979. Official Kentucky Mileage Map,
1980. Delivery time - Overnite Transportation Company, 1020 Whipple
Court, Lexington, Kentucky 40574.

Air

Local

Morehead-Rowan County Airport
Location: 5 1/2 miles southwest of Morehead
Runways: 1 paved
Length: 2,600 feet
Traffic
Control: Wind sock, unicom
Lighting: Runway lights, rotating beacons, lighted wind sock
Services: Flight instruction, ground school, aircraft charter and leasing
Air Freight Service: Chartered air freight service must be arranged

Nearest Scheduled Commercial Airline Service

Blue Grass Field
Location: 5 miles west of Lexington, Kentucky;
70 miles west of Morehead
Runways: 2 paved
Length: 6,500 feet; 3,500 feet
Traffic
Control: Tower
Lighting: Approach lighting system, beacon, runways and obstructions lighted, VASI
Services: Delta, Frontier, Piedmont, USAir, Comair, Tennessee Airways; fuel - 100LL and jet-A; hangars, tie-downs; major A & P repairs, major Avionics repairs; APU, charter, flight instruction, oxygen, plane rentals, survival equipment; taxi, limousine, car rentals, courtesy car; weather information; restaurant, snack bar
Air Freight Service: Air freight terminal

Tri-State Airport (Walker-Long Field)
Location: 9 miles southwest of Huntington, West Virginia;
60 miles east of Morehead
Runways: 2 paved
Length: 6,509 and 3,007 feet
Traffic
Control: Tower
Lighting: Beacon, runway
Services: USAir, Piedmont, Aeromech, Comair; fuel - 100LL, jet-A; tie-downs, hangars; major A & P repairs, major Avionics repairs; APU, charter, flight instruction, oxygen, plane rental, survival equipment, U. S. Customs; taxi, limousine, car rental; weather information; restaurant
Air Freight Service: Air freight terminal

Bus - Southern Greyhound Bus Lines

Taxi - Three companies, 24-hour service

Rental Services - Car, truck and trailer rentals are available locally.

Water

The nearest navigable river is the Ohio River. Morehead is 44 miles southeast of a point on the Ohio River at Maysville, Kentucky, where a nine-foot navigation channel is maintained. A public riverport is proposed for Maysville.

POWER AND FUEL

Electricity

Company serving Morehead and central Rowan County - Kentucky
Utilities Company

Source of power - Kentucky Utilities Company

Total generating capacity - 2,639,100 KW*

For industrial rates contact:

Industrial Development Department
Kentucky Utilities Company
One Quality Street
Lexington, Kentucky 40507
(606) 255-1461

Company serving northeast portion of Rowan County - Kentucky Power
Company

Source of power - Kentucky Power Company

Total generating capacity - 1,065,000 KW

For industrial rates contact:

Kentucky Power Company
1701 Central Avenue
P. O. Box 1428
Ashland, Kentucky 41101
(606) 329-2220

*A new generating unit is under construction in Carroll County. Due to be completed in 1984, the unit will have a generating capacity of 511,000 KW.

Company serving southeast portion of Rowan County - Grayson Rural
Electric Cooperative Corporation
Company serving southwest portion of Rowan County - Clark Rural
Electric Cooperative Corporation
Company serving northwest portion of Rowan County - Fleming-Mason
Rural Electric Cooperative Corporation
Source of power - East Kentucky Power Cooperative
Total generating capacity - 1,304,000 KW*
For industrial rates contact:

Industrial Development Division
East Kentucky Power Cooperative
P. O. Box 707
Winchester, Kentucky 40391
(606) 744-4812

Natural Gas

Company serving Morehead - Morehead Utility Plant Board*
Source of supply - Tennessee Gas Pipeline Company
Size of transmission mains - 36-inch (supplier);
6-inch (distributor)
Distribution mains - 1, 2, 3, 4 and 6-inch
Distribution pressure - 4 ounces to 125 psi
Btu content - 1,025 per cubic foot
Specific gravity - .60
For rates and supplies contact:

Morehead Utility Plant Board
109 Bishop Avenue
Morehead, Kentucky 40351
(606) 784-5538

*East Kentucky Power Cooperative's total generating capacity will be increased when a new 600,000 KW coal-fired generation plant is completed in southeast Clark County in 1992.

**In Spring 1983, a major project to revivify Morehead's municipal natural gas system began. The \$1.8 million project includes the replacement of most existing lines and installation of all new meters. The project will make for a more consistant distribution pressure throughout the entire system. The project is scheduled for completion in Spring 1984.

Company serving portions of Rowan County - Delta Natural Gas Company
Source of supply - Tennessee Gas Pipeline Company
Size of transmission mains - 30-inch (supplier);
2 and 4-inch (distributor)
Distribution mains - 2-inch
Distribution pressure - 15 psi
Btu content - 1,040 per cubic foot
Specific gravity - .61
For rates and supplies contact:

Marketing Manager
Delta Natural Gas Company
Route 1, Box 30-A
Winchester, Kentucky 40391
(606) 744-6171

Other Fuels

Propane

Buckeye Gas Products
(bulk plant)
U. S. 60 East
Morehead, Kentucky 40351

Empiregas, Inc. of Morehead
(bulk plant)
U. S. 60 East
Morehead, Kentucky 40351

Fuel oils

Distillate fuel oil -

Ashland Oil and Refining
Company (bulk plant)
218 Rowan Street
Morehead, Kentucky 40351

Williams-Nickell Oil Company
(bulk plant)
237 East First Street
Morehead, Kentucky 40351

Residual fuel oil - Arrangements must be made with the refinery.

Low sulphur content coal - Available locally.

WATER AND SEWERAGE

Public Water Supply

Company serving Morehead - Morehead Utility Plant Board*
109 Bishop Avenue
Morehead, Kentucky 40351
(606) 784-5538

Source - Licking River

Treatment plant capacity - 5,000,000 gallons per day*

Average daily consumption - 1,325,000 gallons

Peak daily consumption - 2,200,000 gallons

Type treatment - Filtration, coagulation, chlorination, fluoridation
and settling

Storage capacity - 2,676,000 gallons

Size lines - 1 to 16 inches

Average pressure - 40 psi

Average temperature - 55 degrees F.

MONTHLY WATER RATES

First	2,000 gallons	\$6.95 (Minimum bill)
Next	4,000 gallons	2.80 per M gallons
Next	4,000 gallons	2.45 per M gallons
Next	20,000 gallons	2.10 per M gallons
Next	20,000 gallons	1.75 per M gallons
Next	250,000 gallons	1.40 per M gallons
All over	300,000 gallons	1.20 per M gallons

There is a 20 percent surcharge for consumers outside the city limits.

Tap-on charge:

3/4-inch meter	\$300
1-inch meter	400
1 1/2-inch meter	500
2-inch meter	750

*Phase I of a major renovation of the water treatment system was completed in early 1983. The treatment plant capacity was increased from 1.5 million to 5 million gallons per day. Also included in Phase I of the project was the construction of four new storage tanks and the installation of a 12-inch raw water supply line to supplement the existing supply line. Phase II of the project is to increase the raw water intake capacity from 1.5 million to 5 million gallons per day. Phase II is scheduled to begin in the summer of 1983 and targeted for completion in the summer of 1984. Total cost of the project will be approximately \$6.3 million.

Name of water district - Rowan Water, Inc.*
110 Hargis Avenue
Morehead, Kentucky 40351
(606) 784-9818

Area served - Rural Rowan County
Date when water district began operating - 1970
Source of supply of treated water - Morehead Utility Plant Board
Average amount of water used in a 24-hour period - 280,000 gallons
Peak amount of water used in a 24-hour period - 300,000 gallons
Storage capacity - 130,000 gallons
Average pressure - 70 psi
Average temperature - 55 degrees F.
Size lines - 3, 4, 6, 8, 10 and 12-inch

MONTHLY WATER RATES

First	2,000 gallons	\$8.90 Minimum
Next	3,000 gallons	3.20 per M gallons
Next	10,000 gallons	2.80 per M gallons
Next	10,000 gallons	2.40 per M gallons
Next	10,000 gallons	2.20 per M gallons
Next	15,000 gallons	2.00 per M gallons
All over	50,000 gallons	1.75 per M gallons

Minimum Monthly Charges

5/8-inch meter	2,000 gallons	\$ 8.90
3/4-inch meter	4,000 gallons	15.30
1-inch meter	5,000 gallons	18.50
1 1/2-inch meter	15,000 gallons	46.50
2-inch meter	25,000 gallons	70.50

Tap-on charge:

5/8-inch meter	\$260
3/4-inch meter	300
1-inch meter	350
1 1/2-inch meter	650
2-inch meter	845

Raw Water

Surface water sources - Licking River, Triplett Creek and Cave Run Lake
Average discharge - Licking River at Farmers, Kentucky, 1,063 cfs
(43-year record, USGS, unadjusted); North Fork of Triplett Creek
near Morehead, 134 cfs (14-year record, USGS)
Expected ground water yield - 5 to 50 gpm along the Licking River, in
central Rowan County and in southeast Rowan County; 5 gpm or less in
the remainder of the county

*Rowan Water, Inc. has increased its service area by laying six miles of
8, 10 and 12-inch lines along Kentucky 32 to the Fleming County line. The
\$400,000 project was completed in Spring 1983.

Sewerage

Company serving Morehead - Morehead Utility Plant Board*
109 Bishop Avenue
Morehead, Kentucky 40351
(606) 784-5538

Design capacity - 2,500,000 gallons per day

Average daily flow - 1,250,000 gallons

Type of treatment - Secondary

Treatment process - Grit removal, screening, primary clarifiers,
aeration, secondary clarifier, chlorine contact, anaerobic sludge
digestion, belt pressed sludge

Treated effluent discharged into - Licking River

Size of sanitary mains - 4 to 36 inches

Size of storm mains - 36 inches

Monthly rates -

First	2,000 gallons	\$6.75 Minimum
Next	4,000 gallons	2.30 per M gallons
Next	4,000 gallons	2.10 per M gallons
Next	20,000 gallons	2.00 per M gallons
Next	20,000 gallons	1.90 per M gallons
Next	250,000 gallons	1.75 per M gallons
All over	300,000 gallons	1.60 per M gallons

There is a 20 percent surcharge for customers outside the city limits.

Tap-on charge: \$600

*Morehead Utility Plant Board began operation of a new 2,500,000 gallon per day treatment plant in 1981. The new plant made it possible to expand the sewerage system into the northside of Morehead.

CLIMATE

Rowan County

Temperature

Normal (30-year record)	55.20 degrees
Average annual 1982	55.50 degrees
Record highest, September 1954 (38-year record)	103.00 degrees
Record lowest, January 1963 (38-year record)	-21.00 degrees
Normal heating degree days (30-year record)	4,729
(Heating degree day totals are the sums of negative departures of average daily temperatures from 65 degrees F.)	

Precipitation

Normal (30-year record)	44.49 inches
Mean annual snowfall (39-year record)	16.40 inches
Total precipitation 1982	38.76 inches
Mean number days precipitation (.01 inch or more) (38-year record)	131
Mean number days thunderstorms (38-year record)	46

Prevailing Winds (17-year record)

South

Relative Humidity

1 a.m. 77 percent (18-year record)
7 a.m. 81 percent (19-year record)
1 p.m. 60 percent (19-year record)
7 p.m. 64 percent (19-year record)

Source: U. S. Department of Commerce, Environmental Science Services Administration, Climatological Data, 1982.
Station of record: Lexington Kentucky.

LOCAL GOVERNMENT

City

Structure - Mayor - 4-year term; 6 council members - 2-year terms

Budget 1982-83 - General Fund \$1,249,951

1983-84 - Water, Sewer

and City Gas Fund 3,346,800

Fees and licenses - Occupational license tax of one percent on salaries or wages of individuals for work done or services performed in the city. Business license tax of one percent on net profits of businesses, certain businesses are required to pay a minimum fee

County

Structure - County Judge/Executive - 4-year term;

4 magistrates - 4-year terms

Budget 1982-83 - General Fund \$475,359; Road Fund \$338,389

Fees and licenses - Occupational license tax of 1/4 of 1 percent on wages of individuals and on net profits of businesses

Assessed Value of Property, 1982*

<u>Classes of Property</u>	<u>Morehead</u>	<u>Rowan County</u>
Real Estate	\$63,499,114	\$154,682,626
Tangibles	17,623,893	43,784,045

*Excludes Homestead Exemptions.

Property Taxes

All property in Kentucky is assessed at 100 percent of fair cash value.

Land and buildings are taxed by the state and may be taxed by local jurisdictions. The state rate is \$0.224 per \$100 of assessed valuation.

Manufacturing machinery, raw materials inventories, pollution control equipment, and goods in the process of manufacture are not subject to local taxation. The state rate is \$0.15 per \$100.

Other tangible personal property owned by manufacturers (automobiles, trucks, finished goods, office furniture, office equipment) is taxed by the state at \$0.45 per \$100 and may be taxed by local jurisdictions.

Intangible personal property located in Kentucky (money in hand, shares of stock, notes, bonds, accounts receivable, and other credits) is taxed by the state at \$0.25 per \$100, and is not subject to local taxation.

Property stored in public warehouses in a transit status is not subject to local taxation. The state rate is only \$0.015 per \$100.

Private leaseholds in industrial facilities owned by cities or counties and financed by industrial revenue bonds are subject to a state tax of \$0.015 per \$100 of value (essentially the lessee's equity, adjusted for appreciation or depreciation). Local taxation is not permitted.

Combined State and Local Rates Per \$100 Valuation, 1982* (100% assessment)

	<u>Site Inside City of Morehead</u>	<u>Site Inside Unincorporated Rowan County</u>
1. Land and buildings	\$0.753	\$0.530
2. Mfg. machinery, raw materials, goods in process, pollution control equipment	0.150	0.150
3. Finished goods, office equipment, vehicles, other tangibles	1.037	0.814
4. Intangible (accounts rec., notes, bonds, etc.)	0.250	0.250
5. Property stored in public warehouses in a transit status	0.015	0.015
6. Leaseholds in industrial revenue bond financed plants	0.015	0.015

*Kentucky Department of Economic Development.

Utilities Gross Receipts Tax for Schools

A 3 percent tax is levied on utilities receipts for schools in Rowan County. Tax is paid by all consumers of utilities as an add-on to the utilities bills. Exempted are receipts from utilities services that are resold and the receipts from the sale of energy or energy producing fuels that exceed 3 percent of the cost of production in manufacturing, processing, mining or refining.

Planning and Zoning

Joint agency - Morehead-Lakeview Heights-Rowan County Planning Commission

Zoning enforced - All areas

Subdivision regulations enforced - All areas

Local codes enforced - Building and housing

Mandatory state codes enforced - Kentucky Plumbing Code, National

Electric Code, Kentucky Boiler Regulations and Standards, Kentucky

Building Code (modeled after BOCA code)

Safety

Police

Morehead

Rowan County

Total staff

24 full-time

4 full-time

15 auxiliary

1 part-time

Radio-patrol cars

6

4

Fire

Insurance Services Office,

Public Protection

Classification

6

*

Volunteers

30

-

*The Morehead Fire Department also serves Rowan County. In the county the fire rating is Class 10.

Rescue Service

Morehead-Rowan County Rescue Squad:*

Number of volunteers - 30

Equipment - Four radio-equipped trucks, 5 emergency generators, pontoon boat and motor rigged with dragging equipment, "Jaws of Life" and other miscellaneous rescue equipment

Personnel training - Red Cross first aid; emergency search, rescue and recovery training; hazardous materials training; basic rescue; 13 members are emergency medical technicians, one member is a registered nurse, and one member is a licensed practical nurse

Refuse Collection and Disposal

	<u>Morehead</u>	<u>Rowan County</u>
Type service	Municipal	Private
Fee charged:		
residential	\$4 monthly	\$5.50 monthly curb service \$7.50 monthly behind the house
business	Based on service	Based on volume
industrial	Based on service	Based on volume
Collection frequency:		
residential	Once weekly	Once weekly
business	Twice weekly	Based on volume
industrial	Twice weekly	Based on volume
Trash pickup	Once weekly during season	-
Disposal method	Sanitary landfill	Sanitary landfill

*The Morehead-Rowan County Rescue Squad moved into a new \$80,000 building in January 1983.

EDUCATION

Public Schools

Rowan County*

Total Enrollment (Spring 1983)	3,164
Elementary	1,422 (K-5)
Middle School	792
High School	950
Student-Teacher Ratio	23-1
Elementary	25-1
Middle School	24-1
High School	19-1
Percent High School Graduates to College (1982)	24.7
Expenditure Per Pupil (1981-82)	\$1,315.20
Bonded Indebtedness (June 30, 1983)	\$7,878,000**

*A new high school building was opened for use in January 1983. The \$8.5 million facility is designed to accommodate 1,200 students. The old high school building is now used as a middle school. Additional projects planned within the school system include new and better equipped athletic facilities and a new bus garage.

**Includes School Building Authority bonds outstanding - \$7,355,000; local school district obligation - \$5,225,000.

Area Colleges and Universities

<u>Name</u>	<u>Location (Miles distant)</u>	<u>Enrollment (Fall, 1982)</u>	<u>Highest Degree Conferred</u>
Morehead State University	Morehead	6,370	Masters, Specialist*
Kentucky Christian College	Grayson, Kentucky (38)	448	Baccalaureate
Maysville Community College	Maysville, Kentucky (44)	571	Associate
Ashland Community College	Ashland, Kentucky (59)	1,775	Associate
University of Kentucky	Lexington, Kentucky (65)	22,829	Doctorate, M.D., D.M.D., J.D.
Transylvania University	Lexington, Kentucky (65)	701	Baccalaureate**
Lexington Technical Institute	Lexington, Kentucky (65)	2,462	Associate
Ohio University (Ironton Campus)	Ironton, Ohio (65)	1,058	Academic & Professional
Marshall University	Huntington, West Virginia (65)	11,756	Academic & Professional

Morehead State University was founded in 1922 and received university status in 1966. The university offers more than 140 separate academic programs on the associate, baccalaureate, and graduate levels. The university's academic structure consists of six schools encompassing 24 departments. The campus consists of 500 acres within the city limits of Morehead and a 320-acre agricultural complex north of the city.

The Appalachian Development Center was established in 1978 as Morehead State University's regional service arm. The center is committed to economic, social and educational development in partnership with the people and institutions of Appalachian Kentucky. The center's major program areas are business development, regional research, community services and Appalachian studies.

*Joint doctoral degree programs are offered in cooperation with the University of Kentucky, Lexington. The degrees are issued by the University of Kentucky.

**Courses in a masters degree program are taught on the Transylvania campus by faculty members of Xavier University of Cincinnati. The degree is issued by Xavier University.

Vocational Schools

Both the state vocational-technical schools and the area vocational education centers are operated by the Kentucky Department of Education. The state vocational-technical schools enroll persons full time who are at least 16 years of age and not in school. These students attend classes for six hours each day. The area vocational education centers are designed to accommodate high school students who are at least 15 years of age. These students attend vocational school for three hours each day. The state vocational-technical schools and the area education centers offer evening courses to enable working adults to upgrade current job skills.

Nearest State School*

Location	Ashland State Vocational-Technical School
Miles Distant	Ashland
Curriculum	59
	Business and Office
	General Clerical
	Secretarial-Stenographic
	Consumer and Home Economics
	Child Care
	Commercial Foods
	Health and Personal Services Occupations
	Cosmetology
	Nurse Assistant
	Practical Nursing
	Industrial Education
	Auto Body Repair
	Auto Mechanics
	Carpentry-Building Trades
	Drafting
	Heavy Equipment Maintenance
	Industrial Electricity
	Industrial Electronics
	Instrumentation
	Machine Shop
	Radio and Television Repair
	Tool and Die Making
	Welding

*A state vocational-technical school is under construction in Morehead. The new facility is tentatively scheduled for completion in January 1984. The \$5 million complex will contain approximately 65,000 square feet.

Nearest Area Education Center

Location	Rowan County Area Vocational Education Center Morehead
Curriculum	Agriculture Adult Farmer Business and Office Clerical Secretarial Health and Personal Services Occupations Health Careers Practical Nursing Industrial Education Air Conditioning/Refrigeration Auto Mechanics Carpentry/Building Trades Drafting Special Vocational Programs* Consumer and Family Life Skills

Arrangements can be made to provide training in the specific production skills required by an industrial plant. Instruction may be conducted either in the vocational school or in the industrial plant, depending upon the desired arrangement and the availability of special equipment.

*Also includes programs for juvenile offenders.

HEALTH

Local Medical Personnel

Physicians - 30
Dentists - 17

Hospitals

<u>General Hospital</u>	<u>Location</u>	<u>Beds</u>
St. Claire Medical Center*	Morehead	170

General hospital facilities and services - Inpatient and outpatient services, 14-station emergency room, 4 operating rooms, 3 delivery rooms, 10-bed intensive/coronary care unit, 56 acute care beds, 20 psychiatric inpatient beds, physical therapy department, diagnostic radiology (ultrasound, nuclear medicine, special procedures), CT Scanning, EEG testing, EKG laboratory, blood bank, pharmacy, respiratory therapy, clinical and histology laboratory, medical library, home health and homemaker services, speech pathology, inpatient and outpatient diagnostic and therapeutic psychiatric services, acute alcoholism and drug abuse services, and hospice

Medical staff - 5 general surgeons, 1 anesthesiologist, 2 urologists, 2 orthopedists, 3 pediatricians, 3 obstetricians, 1 radiologist, 4 family medicine physicians, 5 internal medicine specialists, 1 pathologist, 2 oral surgeons, 2 EENT surgeons, 1 psychiatrist, 45 registered nurses, 16 licensed practical nurses, 11 laboratory technicians, 10 X-ray technicians, 4 pharmacists, 3 physical therapists, and 5 respiratory therapists

*The St. Claire Medical Center in affiliation with the University of Kentucky, Morehead State University, and the University of Louisville provides medical education programs in nursing, medical assistance, and radiology technology; clinical experience for the EMT program, medical interns, and medical and surgical residents. Licensed practical nursing is taught at the medical center by the Rowan County Area Vocational Education Center.

Other Medical Facilities

Morehead Clinic
Cave Run Clinic
Cave Run Comprehensive Care Center

Ambulance Service

Name - Morehead-Rowan County Ambulance Service, Inc.
Staff - 9 full-time emergency medical technicians and
6 part-time emergency medical technicians
Service - 24-hour, county-wide
Equipment - 4 fully equipped ambulances

Public Health

Facility - Rowan County Health Center*
Staff - two registered nurses, one licensed practical nurse, one
health environmentalist, one plumbing inspector, one nutritionist,
three clerks, and one community worker

*Rowan County has become a member of the Gateway District Health Department which also includes Bath, Menifee, Montgomery and Morgan Counties.

OTHER LOCAL FACILITIES

Communications

Telephone - General Telephone Company
Services - Standard

Telegraph - Western Union
Services - Toll-free number, 1-800-325-5100; Counter service
available in Morehead

Postal - U. S. Post Office
Class - First
Mail received - Twice daily
Mail dispatched - Twice daily

Newspapers - The Morehead News
Bi-weekly and circulation - 6,700
Other papers
received from - Louisville, Lexington and Ashland, Kentucky

Radio - WMOR-AM/FM and WMKY-FM
Stations received from - Lexington, Ashland, Mt. Sterling,
Grayson and Louisville, Kentucky;
Nashville, Tennessee

Television -
Cable service
Reception from - Lexington, Kentucky; Huntington and Charleston,
West Virginia; Cincinnati, Ohio; Atlanta, Georgia
Kentucky Educational
Television - Channel 38 - Morehead transmitter

Library Services

Public library - Rowan County Public Library
Size collection - 33,024 volumes
Circulation, 1981-82 - 108,703
Services - Story hour, reading program, magazines, records, art,
pamphlets, community meeting room, planned programs, copying
machine, projector, record player, Kentucky Revised Statutes

University library - Camden-Carroll Library, Morehead State University
(Open to the public)
Size collection - 808,811 resource units
Special collections - Kentucky Room (books about Kentucky or written
by Kentucky authors); James Still Room (writings of Kentucky
author, James Still); Appalachian Collection
Services - Conference rooms, phonograph records, filmstrips, teaching
aids, microfilm readers, microcard readers, microfiche reader-
printer, 3 coin-operated photographic machines, 2,321 newspapers
and magazines subscriptions, film library of 3,000 titles dealing
with all phases of mental health

Religious Institutions

Number of churches - 17

Denominations - Assembly of God
Baptist
Catholic
Christian
Church of Christ
Church of God
Episcopal
Jehovah's Witness
Methodist
Nazarene
Pentecostal
Presbyterian
Seventh Day Adventists

Nearest Synagogues - Ashland, 59 miles east
Congregations - Aqudath Achim (reform)

Financial Institutions

<u>Banks</u>	<u>Assets</u>	<u>Deposits</u>	<u>Statement Date</u>
Peoples Bank of Morehead	\$34,525,180.32	\$31,140,123.95	12/31/82
The Citizens Bank	21,443,707.99	18,699,011.28	12/31/82
<u>Savings and Loan Associations</u>	<u>Assets</u>	<u>Savings Accounts</u>	<u>Statement Date</u>
First Federal Savings and Loan Association of Morehead	\$25,718,789.69	\$23,935,653.91	12/31/82

Hotels and Motels

Total number - 3
Total rooms - 217

Clubs and Organizations

American Association of University Women
American Legion
Barber Shop Quartet
Beta Club
Boy Scouts
Breckinridge Key Club
Brownies
Business and Professional Women's Club
Chamber of Commerce
Community Development Club
Cub Scouts
Daughters of the American Revolution
Downtown Merchants Association
Eastern Star
4-H
Future Business Leaders of America
Future Farmers of America
Future Homemakers of America
Future Teachers of America
Girl Scouts
Historical Society
Homemakers
Junior Achievement
Kiwanis
League of Women Voters
Lions
Masons
Medical Wives Association
Mignon Doran Woman's Club
Morehead Men's Club
Morehead-Rowan County Arts Commission
Morehead-Rowan County Jaycees
Morehead-Rowan County Little League
Morehead University Women's Club
Morehead Woman's Club
Nurse's Association
Odd Fellows
Optimist
Painted Hills Garden Club
Pewee Football League
Police Athletic League
Rebecca Lodge
Retired Teachers Association
Rowan County High Key Club
Rowan County Home Economists
St. Claire Medical Auxiliary
Sweet Adelines
Veterans of World War I
Veterans of World War I Auxiliary

RECREATION

Local

Morehead's wide variety of recreational facilities provide year round activity. Outdoor facilities include five baseball fields (three are lighted), two playgrounds, olympic size swimming pool, outdoor multi-purpose court, four lighted tennis courts, a drive-in theater and a sheltered picnic area at the municipal park. Indoor facilities include two theaters; a senior citizens center at the municipal park; and the Carl D. Perkins Community Center which contains meeting rooms, a kitchen, and an arts and crafts area. Organized activities are sponsored by the Morehead-Rowan County Police Youth Athletic League.

Morehead State University provides the community with many recreational facilities and activities. The public is permitted to use such university facilities as the indoor swimming pool, the golf course, three racquetball courts, and 24 lit tennis courts. The university also provides an exhibition center on a university farm for horse shows, cattle shows, etc. In the summer the exhibition center is turned into an indoor track. All Morehead State University sporting events are also open to the public.

A wealth of cultural activities can be found in Morehead. The Morehead-Rowan County Arts Commission schedules ballets, operas, etc., and utilizes Morehead State University facilities for these events.

The university supports cultural awareness with a university lecture series, and the Morehead State University Summer Theatre, which puts on an open-air theater on the banks of Cave Run Lake during the summer months. They hope to soon have their own amphitheatre for these performances.

The Appalachian Development Center sponsors the Mountain Heritage Festival in Morehead, which features music and crafts.

Area (Within 55 miles)

Cave Run Lake, constructed by the U. S. Army Corps of Engineers, is only seven miles southwest of Morehead. The 8,200-acre lake provides facilities for camping, boating and fishing.

Rowan County lies within the northernmost part of the 640,000-acre Daniel Boone National Forest. The diversity of recreational pastimes available in the forest includes hiking, white water canoeing, fishing, nature study, hunting, rock climbing and camping.

Carter Caves State Resort Park, 30 miles northeast of Morehead, provides a restful atmosphere with its mountain wildflowers, a rippling stream, the underground wonders of three caves, a lodge, a restaurant, and a gift shop. Recreational facilities available include something for the whole family with playgrounds, two swimming pools (one Olympic-size), tennis courts, shuffleboards, a 9-hole golf course, boating, fishing, horseback riding, picnicking, and cave tours.

Grayson Lake State Park is located approximately 45 miles east of Morehead near Grayson. Facilities available include 71 campsites, a beach, and a picnic area. Good fishing and organized recreational programs can be found during the summer. The park is located in the 7,350-acre Grayson Lake Wildlife Area. Hunting information is available from the Kentucky Department of Fish and Wildlife Resources. The Rosendale Recreation Area, located near a dam on Grayson Lake, includes Kitchen House, a log house circa 1838 which was the scene of a Civil War skirmish. The nearby Camp Webb Conservation Center has a wildlife museum.

The spirit of Daniel Boone and his pioneers is reborn at Fort Boonesborough State Park in Boonesborough, 54 miles southwest of Morehead. In the re-created fort 16 pioneer crafts of the eighteenth century are demonstrated by Kentuckians using functioning antiques from the frontier era. Cabins are furnished as they would have been in the days of Boone and documentary films are presented which depict the struggle of the first Kentuckians to make the Kentucky wilderness a home. A gift shop within the fort offers for sale all the handcrafted items made at the fort, along with a wide variety of handcrafts from throughout Kentucky. Other recreational facilities and activities of the park include the finest sand beach on the Kentucky River with a modern bathhouse, sun deck, and snack shop; a modern camping area with 187 sites; a central service building housing showers; restrooms, and laundry facilities for campers; a pavilion with a gift shop and grocery inside and a playground and basketball, volleyball, and shuffleboard courts on the grounds; and planned daily activities and special events under the guidance of a trained recreation director. Near the park is the dock of the Dixie Belle stern-wheel excursion boat which operates one-hour trips daily on the Kentucky River leaving from the Fort Boonesborough boat dock.

Greenbo Lake State Resort Park, which is located 55 miles northeast of Morehead near Ashland, has a magnificent fieldstone lodge and every article in each room of the lodge has been made in Kentucky. The lodge offers 36 lodge rooms, a dining room, a gift shop, a meeting room, a lodge pool, and a recreation room. Other facilities and activities at the park include a well-equipped campground, a marina, miniature golf, tennis courts, playgrounds, shuffleboard, planned recreation, fishing, hiking, horseback riding, and picnicking.

COMMUNITY IMPROVEMENTS

Recent

A new high school building was opened for use in January 1983. The \$8.5 million facility is designed to accommodate 1,200 students. The old high school building is now used as a middle school. Additional projects planned within the Rowan County School System include new and better equipped athletic facilities and a new bus garage.

Morehead Utility Plant Board began operation of a new 2,500,000 gallon per day treatment plant in 1981. The new plant made it possible to expand the sewerage system into the northside of Morehead.

Rowan Water, Inc. has increased its service area by laying six miles of 8, 10 and 12-inch lines along Kentucky 32 to the Fleming County line. The \$400,000 project was completed in Spring 1983.

Hall Holdings, Inc. began operations in Morehead in 1983. The company manufactures mine support systems and tooling and employs 150.

Under Way

Morehead is participating in the Governor's Economic Achievement Recognition (GEAR) program. GEAR, utilizing a team of economic and community development professionals, helps communities identify and solve specific economic development problems or needs. Three recommendations have been made in connection with GEAR in Morehead:

- 1) Revitalize the local chamber of commerce
- 2) Identify and retain control over industrial sites
- 3) Develop a plan for downtown revitalization

In Spring 1983, a major project of revivify Morehead's municipal natural gas system began. The \$1.8 million project includes the replacement of most existing lines and installation of all new meters. The project will make for a more consistant distribution pressure throughout the entire system. The project is scheduled for completion in Spring 1984.

Phase I of a major renovation of the water treatment system was completed in early 1983. The treatment plant capacity was increased from 1.5 million to 5 million gallons per day. Also included in Phase I of the project was the construction of four new storage tanks and installation of a 12-inch raw water supply line to supplement the existing supply line. Phase II of the project is to increase the raw water intake capacity from 1.5 million to 5 million gallons per day. Phase II is scheduled to begin in the summer of 1983 and targeted for completion in the summer of 1984. Total cost of the project will be approximately \$6.3 million.

A state vocational-technical school is under construction in Morehead. The new facility is tentatively scheduled for completion in January 1984. The \$5 million complex will contain approximately 65,000 square feet.