

1981

## Industrial Resources: Russell County

Kentucky Library Research Collections  
Western Kentucky University, [spcol@wku.edu](mailto:spcol@wku.edu)

Follow this and additional works at: [https://digitalcommons.wku.edu/russell\\_cty](https://digitalcommons.wku.edu/russell_cty)

 Part of the [Business Administration, Management, and Operations Commons](#), [Growth and Development Commons](#), and the [Infrastructure Commons](#)

---

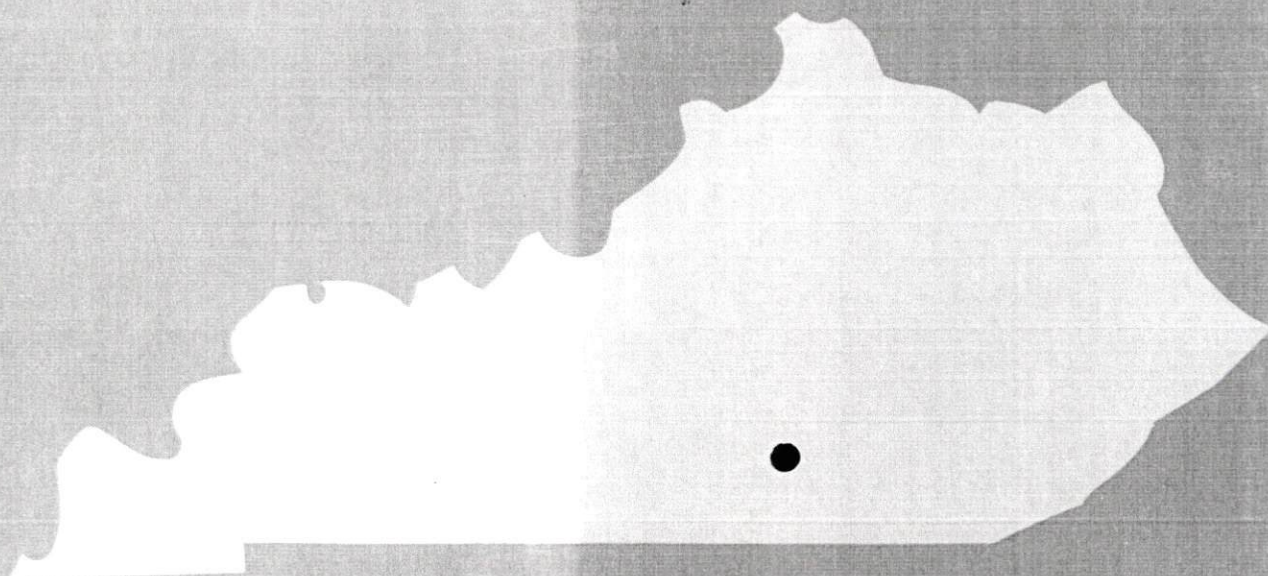
### Recommended Citation

Kentucky Library Research Collections, "Industrial Resources: Russell County" (1981). *Russell County*. Paper 8.  
[https://digitalcommons.wku.edu/russell\\_cty/8](https://digitalcommons.wku.edu/russell_cty/8)

This Report is brought to you for free and open access by TopSCHOLAR®. It has been accepted for inclusion in Russell County by an authorized administrator of TopSCHOLAR®. For more information, please contact [topscholar@wku.edu](mailto:topscholar@wku.edu).

Russell County

A comprehensive  
report on  
**Russell County, Ky.**

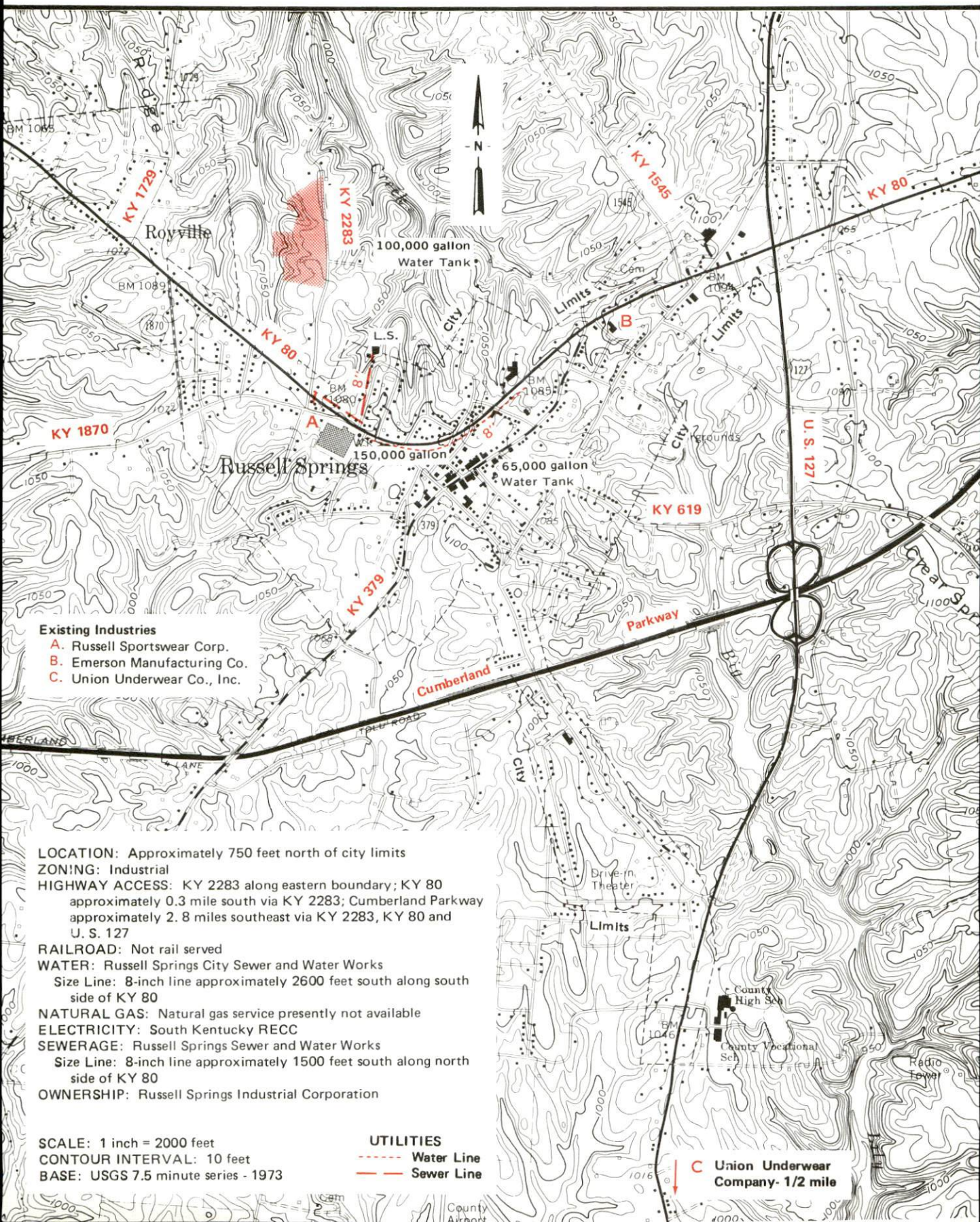


**KENTUCKY & CO.**  
The state that's run like a business.



# RUSSELL SPRINGS, KENTUCKY -- Site 181 -- 20 Acres

For more information contact the Department of Economic Development, Office of Business Development, Industrial Development Division, Capital Plaza Tower, Frankfort, Kentucky 40601 (502-564-7140).





A COMPREHENSIVE REPORT ON  
RUSSELL COUNTY, KENTUCKY

Prepared by  
The Kentucky Department of Commerce  
Division of Research and Planning  
in cooperation with  
The Russell Springs Chamber of Commerce

1981



# TABLE OF CONTENTS

<u>Chapter</u>	<u>Page</u>
INDUSTRIAL SITES . . . . .	i
RUSSELL COUNTY, KENTUCKY - A RESOURCE PROFILE . . . . .	1
THE LABOR MARKET AREA . . . . .	3
Population . . . . .	3
Labor Force Characteristics of Residents, 1980 . . . . .	3
Estimated Male Labor Supply . . . . .	4
Estimated Female Labor Supply . . . . .	4
Russell County Manufacturing Firms,	
Their Products and Employment . . . . .	5
New Manufacturing Development . . . . .	6
Labor Organizations in Manufacturing Firms . . . . .	6
Industrial Services . . . . .	7
Average Weekly Wages by Industry,	
by Place of Work, 1980 . . . . .	8
Per Capita Personal Income . . . . .	10
TRANSPORTATION . . . . .	11
Rail . . . . .	11
Highways . . . . .	11
Truck Service . . . . .	12
Air . . . . .	14
Bus . . . . .	15
Taxi . . . . .	15
Rental Services . . . . .	15
Water . . . . .	15
POWER AND FUEL . . . . .	16
Electricity . . . . .	16
Natural Gas . . . . .	16
Other Fuels . . . . .	17
WATER AND SEWERAGE . . . . .	18
Water . . . . .	18
Sewerage . . . . .	20
CLIMATE . . . . .	21

<u>Chapter</u>	<u>Page</u>
LOCAL GOVERNMENT . . . . .	22
City . . . . .	22
County . . . . .	22
Assessed Value of Property . . . . .	22
Property Taxes . . . . .	23
Combined State and Local Rates Per \$100 Valuation, 1980 . . . . .	23
Planning and Zoning . . . . .	24
Safety . . . . .	24
Police . . . . .	24
Fire . . . . .	24
Rescue Service . . . . .	24
Refuse Collection and Disposal . . . . .	25
EDUCATION . . . . .	26
Public Schools . . . . .	26
Area Colleges and Universities . . . . .	27
Vocational Schools . . . . .	28
HEALTH . . . . .	30
Local Medical Personnel . . . . .	30
Hospitals . . . . .	30
Other Medical Facilities . . . . .	30
Ambulance Service . . . . .	30
Public Health . . . . .	30
OTHER LOCAL FACILITIES . . . . .	31
Communications . . . . .	31
Library Services . . . . .	32
Religious Institutions . . . . .	32
Financial Institutions . . . . .	33
Hotels and Motels . . . . .	33
Clubs and Organizations . . . . .	34
RECREATION . . . . .	35



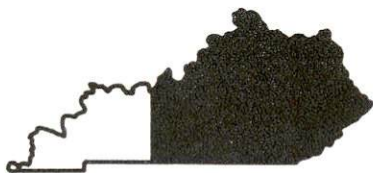
1980 EDITION  
GENERAL HIGHWAY MAP  
**RUSSELL COUNTY**  
**KENTUCKY**

PREPARED BY THE  
KENTUCKY DEPARTMENT OF TRANSPORTATION  
OFFICE OF TRANSPORTATION PLANNING  
DIVISION OF FACILITIES PLANNING

IN COOPERATION WITH THE  
U.S. DEPARTMENT OF TRANSPORTATION  
FEDERAL HIGHWAY ADMINISTRATION



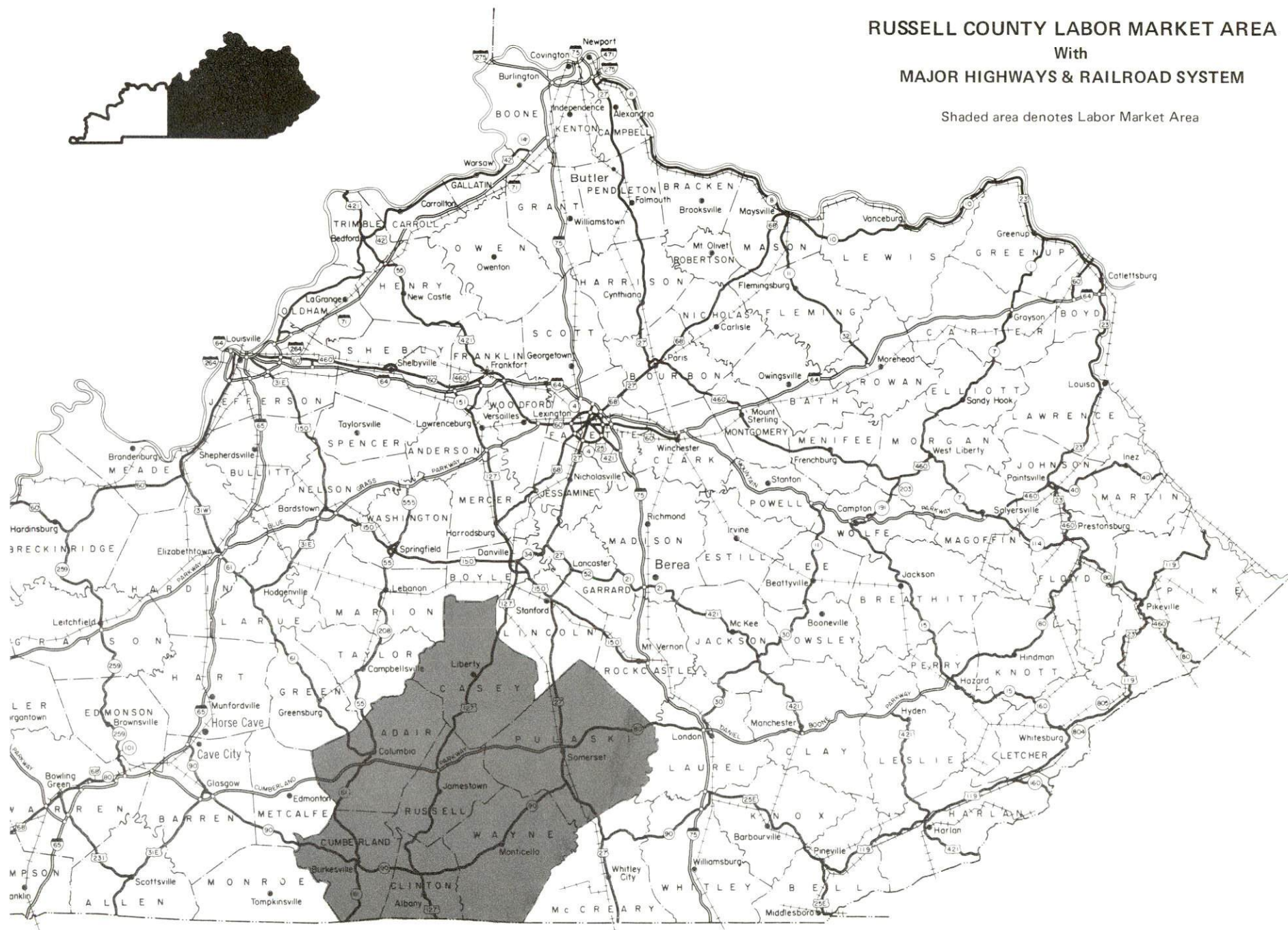




# RUSSELL COUNTY LABOR MARKET AREA

## With MAJOR HIGHWAYS & RAILROAD SYSTEM

Shaded area denotes Labor Market Area





## RUSSELL COUNTY, KENTUCKY - A RESOURCE PROFILE

Russell County is located in south central Kentucky, on the midpoint of a line connecting Louisville, Kentucky, with Knoxville, Tennessee. There are two principal cities in the county - Russell Springs and Jamestown. Russell Springs and Jamestown have been named All - Kentucky Cities in 1974 and 1980, respectively. Jamestown, the county seat, had a 1980 population of 1,441, and Russell Springs' population for 1980 was 1,831. The total population of Russell County in 1980 was 13,708, a 30 percent increase from its 1970 census figure of 10,542.

### The Economic Framework

Total employment in Russell County in 1980 averaged 3,531 workers, with 3,076 employed in nonagricultural jobs. Manufacturing provided 925 jobs, government provided 589 jobs, wholesale and retail trade provided 480 jobs, and services provided 215 jobs. Manufacturing employment should increase by approximately 1,000 to 1,100 before the end of 1982 as Union Underwear continues to step up production at its new Jamestown plant. Manufacturing employment is greatest in the textile mill products and apparel and related products fields.

Russell County's per capita personal income in 1979 was \$5,118, a 60 percent increase over the 1975 figure of \$3,204.

The Russell County labor market includes six surrounding counties, giving a total area employment of 47,679 for 1980, with 42,064 of this number employed in nonagricultural jobs. There were 8,541 jobs in manufacturing, 4,970 in wholesale and retail trade, 2,954 in services, and 4,553 in government in 1980.

### Resources for Growth

1. There is a current estimated labor supply of 8,689 men and 5,718 women available for industrial jobs in the labor market area. An additional 4,515 young men and 4,380 young women will become 18 years of age and potentially available for work before 1986.

2. Rail service is available at Somerset, Kentucky, 28 miles east of Russell Springs. Russell Springs is served directly by the Cumberland Parkway, an east-west, multi-lane toll road; Interstate 75 is accessible 61 miles to the east, via the Cumberland Parkway and Kentucky Route 80.

3. Electrical power is provided to Jamestown, Russell Springs and parts of Russell County by Kentucky Utilities Company. The remainder of Russell County is served by East Kentucky Power Cooperative through the South Kentucky Rural Electric Cooperative Corporation. There are two dealers of propane and two dealers of fuel oil located in Russell Springs.

(Contd.)

4. One public school system operates in Russell County. Two senior colleges, one community college and one junior college are located within 50 miles of Russell County. The Somerset State Vocational-Technical School is located 28 miles from Russell Springs, and offers training in 15 course areas. The Russell County Area Vocational Education Center in Russell Springs offers training in five course areas.



## THE LABOR MARKET AREA

The Labor Market Area includes Russell County and the adjoining Kentucky counties of Adair, Casey, Clinton, Cumberland, Pulaski and Wayne.

Area	POPULATION		Percent Nonwhite
	1980	1970	
Jamestown	1,441	1,027	3.8
Russell Springs	1,831	1,641	0.3
Labor Market Area	123,194	101,008	N/A
Russell County	13,708	10,542	0.9
Adair County	15,233	13,037	3.6
Casey County	14,818	12,930	0.3
Clinton County	9,321	8,174	0.2
Cumberland County	7,289	6,850	5.4
Pulaski County	45,803	35,234	1.5
Wayne County	17,022	14,268	2.4

Note: The 1980 counts of population by race are provisional.

Source: U.S. Department of Commerce, Bureau of the Census, 1980 Census of Population and Housing, March 1981.

### LABOR FORCE CHARACTERISTICS OF RESIDENTS, 1980

	<u>Russell County</u>	<u>Labor Market Area</u>
Civilian Labor Force	4,202	53,050
Employment	3,531	47,679
Agricultural	455	5,615
Nonagricultural	3,076	42,064
Unemployment	671	5,371
Rate of Unemployment (%)	16.0	10.1

Source: Kentucky Department for Human Resources, Kentucky Labor Force Estimates, Annual Averages, 1980.

ESTIMATED MALE LABOR SUPPLY  
RUSSELL COUNTY LABOR MARKET AREA

Area	Current			Future	
	Total	Not in Labor Force	Unemployed	Under-employed	Reaching 18 years of age before 1986
Labor Market Area*	8,689	2,833	3,615	2,241	4,515
Russell	1,536	848	452	236	440
Adair	828	252	306	270	537
Casey	975	286	375	314	584
Clinton	1,086	548	242	296	377
Cumberland	408	0	219	189	270
Pulaski	2,688	571	1,454	663	1,641
Wayne	1,168	328	567	273	666

\*Additional workers may be drawn from other nearby counties.

Note: Unemployed - persons unemployed and actively seeking work;  
Underemployed - persons employed but working only 14 to 26 weeks per year; Not in Labor Force - represents the number of persons who would enter the labor force if suitable employment were available (based on the assumption that persons in Kentucky would like to participate in the labor force in the same proportion that they do nationally).

Sources: Kentucky Department for Human Resources, Kentucky Labor Supply Estimates by County, 1980. Kentucky Department of Commerce, Future Labor Supply before 1986.

ESTIMATED FEMALE LABOR SUPPLY  
RUSSELL COUNTY LABOR MARKET AREA

Area	Current			Future	
	Total	Not in Labor Force	Unemployed	Under-employed	Reaching 18 years of age before 1986
Labor Market Area*	5,718	2,075	1,756	1,887	4,380
Russell	1,147	707	219	221	481
Adair	590	267	149	174	512
Casey	641	203	182	256	576
Clinton	693	373	117	203	336
Cumberland	232	0	107	125	294
Pulaski	1,807	347	707	753	1,541
Wayne	608	178	275	155	640

\*Additional workers may be drawn from other nearby counties.

Note: Unemployed - persons unemployed and actively seeking work;  
Underemployed - persons employed but working only 14 to 26 weeks per year; Not in Labor Force - represents the number of persons who would enter the labor force if suitable employment were available (based on the assumption that persons in Kentucky would like to participate in the labor force in the same proportion that they do nationally).

Sources: Kentucky Department for Human Resources, Kentucky Labor Supply Estimates by County, 1980. Kentucky Department of Commerce, Future Labor Supply before 1986.



RUSSELL COUNTY MANUFACTURING FIRMS,  
THEIR PRODUCTS AND EMPLOYMENT

Firm (Establishment date)	Product	Employment			Labor Unions
		Total	Male	Female	
<u>Jamestown</u>					
Amaranth Manufacturing Corporation (1972)	Roll forming operation	3	-	-	
Farmers Feed Mill (1949)	Feed	2	2	-	
Russell County News (1913)	Newspaper, job printing	3	2	1	
Sutton Shirt Corporation (1976)	Men's shirts	95	9	86	
Union Underwear, Inc. (1981)	Men's t-shirts, men's knitted underwear	500	-	-	
<u>Russell Springs</u>					
Burley Belt Chemical Company (1971)	Fertilizer	4	3	1	
Burton Cabinets (1971)	Cabinets, kitchen plastic laminated, office furniture, vanities bathroom	5	3	2	
Emerson Manufacturing Company (1954)	Wooden chair backs	24	21	3	
Hi-Way Wood Products, Inc. (1959)	Furniture frames, dinette seats	18	11	7	
Kern P. Kellar, Inc. (1938)	Pallets, skids, crates, boxes, lumber	17	16	1	
Lawless Welding, Inc. (1954)	Weldments, septic and fuel oil tanks	9	9	-	
Medaris Marine, Inc. (1960)	Houseboats and repair	11	11	-	
Plumlee Lumber Company, Inc. (1970)	Lumber	9	8	1	

(Contd.)

RUSSELL COUNTY MANUFACTURING FIRMS,  
THEIR PRODUCTS AND EMPLOYMENT

THEIR PRODUCTS AND EMPLOYMENT					
<u>Firm</u> (Establishment date)	<u>Product</u>	<u>Employment</u>			<u>Labor Unions</u>
		<u>Total</u>	<u>Male</u>	<u>Female</u>	
<u>Russell Springs (Contd.)</u>					
Russell County Feed Mill, Inc. (1961)	Feed, animal health aids, chemicals	7	6	1	
Russell County Ready Mix (N/A)	Concrete	8	8	-	
Russell Sportswear Corporation (1967)	Ladies' sports- wear	770	120	650	
W.H. Sandusky & Son, Inc. (1956)	Lumber, ties, pallets	13	12	1	
The Times Journal Publishing Company (1949)	Newspaper, job print- ing	10	4	6	
Warner Fertilizer Company, Inc. (1972)	Fertilizer	7	6	1	

Source: Kentucky Department of Commerce, Division of Research and Planning.

New Manufacturing Development

The Union Underwear Company began limited operations at its Jamestown plant in April of 1981. An average 1981 employment through October 16, 1981, was 500 persons. Plans call for the plant to be working at full capacity by July 1982 at which time employment will be between 1,000 and 1,200 persons.

LABOR ORGANIZATIONS IN MANUFACTURING FIRMS

There are no unions representing manufacturing workers in Jamestown or Russell Springs, Kentucky, at the present time.



# INDUSTRIAL SERVICES

<u>Type of Service</u>	<u>Location</u>	<u>Mileage from Russell Springs</u>
Tool & Die, Machine & Pattern Shops	Monticello	48
Metal Service Centers	Bowling Green	83
	Lexington	85
Heat Treating	Richmond	83
Metal Finishers	Richmond	83
	Lexington	85
Electric Motor Repair	Somerset	28
Source: <u>Kentucky Directory of Selected Industrial Services, 1981.</u>		

AVERAGE WEEKLY WAGES BY INDUSTRY  
BY PLACE OF WORK, 1980

	<u>Russell County</u>	<u>Adair County</u>	<u>Casey County</u>	<u>Clinton County</u>
All Industries	157.56	175.65	146.75	150.39
Mining & Quarrying	*	289.43	*	259.50
Contract Construction	204.82	179.61	197.69	105.04
Manufacturing	149.68	162.10	124.77	137.63
Transportation, Communications & Public Utilities	267.85	189.17	272.51	220.65
Wholesale & Retail Trade	122.30	133.75	132.00	127.36
Finance, Insurance & Real Estate	183.32	228.73	203.30	173.42
Services	127.82	161.75	112.40	152.80
State/Local Government	188.57	228.54	194.90	177.11
Other	0	*	*	*

	<u>Cumberland County</u>	<u>Pulaski County</u>	<u>Wayne County</u>
All Industries	150.19	210.27	171.01
Mining & Quarrying	162.04	312.49	277.96
Contract Construction	164.70	178.35	274.78
Manufacturing	137.07	240.54	159.26
Transportation, Communications & Public Utilities	180.29	290.51	183.43
Wholesale & Retail Trade	145.19	158.16	137.39
Finance, Insurance & Real Estate	168.01	246.84	206.47
Services	133.67	198.25	145.50
State/Local Government	198.14	205.01	200.16
Other	138.98	168.77	*

\*Not disclosed.

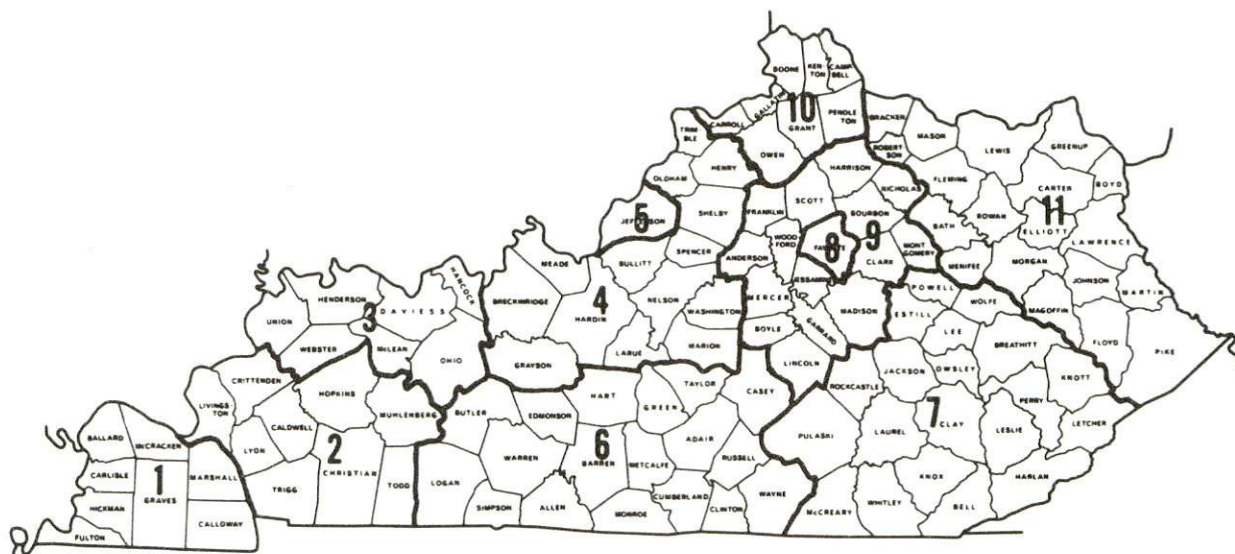
Note: Excludes domestic workers, railway workers, certain nonprofit corporations, majority of federal government workers, and self-employed workers.

Source: Kentucky Department for Human Resources, Average Weekly Wages of Workers Covered by Kentucky Unemployment Insurance Law, 1980.



Occupational wage rates for specific industries are usually not available to most government agencies, and wage data furnished to state employment agencies by individual industrial employers is protected from disclosure by federal law. The most reliable up-to-date wage information can be obtained by direct contact with local employers.

Associated Industries of Kentucky, a voluntary organization of Kentucky businesses, regularly collects occupational wage rates and fringe benefits data from participating member firms. Data is compiled for over 127 clearly defined office, production, and service occupations. Tabulations are published for eleven regions of Kentucky, as shown on the map below. It should be noted that the data may be weighted by the preponderance of firms in the larger cities and may be somewhat higher than the rates paid in the smaller communities. Data from these tabulations are available, upon request, from the Kentucky Department of Commerce, Frankfort, Kentucky 40601.



Associated Industries of Kentucky Area Wage Surveys

PER CAPITA PERSONAL INCOME

<u>Area</u>	<u>1979</u>	<u>1975</u>	<u>Percent Change</u>
Russell County	\$5,118	\$3,204	59.7
Labor Market Area			
Range	\$3,784 - 5,956	\$2,558 - 3,748	N/A
Kentucky	7,052	4,882	44.4
U.S.	8,637	5,861	47.4

Source: U.S. Department of Commerce, Bureau of Economic Analysis,  
 April 1981. U.S. Department of Commerce, Bureau of Economic  
 Analysis, August 1981.



## TRANSPORTATION

### Rail

Line nearest Jamestown and Russell Springs - Southern Railway System  
at Somerset, 28 miles east of Russell Springs

Services - One northbound and one southbound make stops daily,  
Monday through Saturday; 12 southbound and 12 northbound through  
freights daily; switching facilities Monday through Friday, one  
shift; team track space for 12 cars; nearest piggyback facilities  
located in Danville, 50 miles north of Russell Springs. L&N piggy-  
back facilities are located at Glasgow, 51 miles west of Russell  
Springs via the Cumberland Parkway.

For details on routing, schedules, rates, and services contact:

District Sales Manager  
Southern Railway System  
701 South Broadway  
Lexington, Kentucky 40508  
(606) 252-2212

### Highways

Russell Springs is served by the Cumberland Parkway, a multi-lane,  
east-west toll road. Interstate 75 is 61 miles east of Russell Springs  
via the Cumberland Parkway and Kentucky 80, a "AAA" rated trucking  
highway. U.S. 127, a "AAA" rated two-lane highway runs north-south,  
connecting Russell Springs with Jamestown, 5 miles south.

## Truck Service

### Companies serving Jamestown and Russell Springs

Eagle Express Company, Inc.\*

Manning Motor Express, Inc.\*

Reinhardt Transfer Company\*\*  
(Irregular route common  
carrier)

Sanders & Leigh Truck Line\*

Smith's Transfer Corporation\*\*

### Home Office

P.O. Box 12047  
Lexington, Kentucky 40580

P.O. Box 685  
Glasgow, Kentucky 42141

P.O. Box 7, 1410 Tenth Street  
Portsmouth, Ohio 45662

P.O. Box 69  
Liberty, Kentucky 42539

P.O. Box 1000  
Staunton, Virginia 24401

### Other Freight Services

### Shipping Center or Home Office

Purolator Courier Corporation\*\*\*

United Parcel Service\*\*\*\*

KATO Express, Inc. (air  
cargo service)\*\*\*\*\*

Louisville, 118 miles northwest of  
Russell Springs

Campbellsville, 32 miles northwest of  
Russell Springs

Elizabethtown, 104 miles northwest of  
Russell Springs

\*Interstate and intrastate service.

\*\*Interstate service only.

\*\*\*For regular scheduled pickups or for occasional pickups, arrangements must be made with the Louisville office of Purolator Courier Corporation.

\*\*\*\*For regular scheduled pickups or for occasional pickups, arrangements must be made with the Louisville office of United Parcel Service.

\*\*\*\*\*Daily pickup and delivery service is available to and from Standiford field in Louisville. Arrangements for service should be made through the home office in Elizabethtown.



HIGHWAY MILES AND TRUCK TRANSIT TIME IN DAYS FROM  
RUSSELL SPRINGS, KENTUCKY, TO SELECTED MARKET CENTERS

City	Highway Miles	Delivery		City	Highway Miles	Delivery	
		Time TL				Time TL	
Atlanta, Ga.	351	1		Los Angeles, Ca.	2,172	5	
Baltimore, Md.	626	2		Louisville, Ky.	145	1	
Birmingham, Ala.	343	1		Nashville, Tenn.	147	1	
Chicago, Ill.	137	1		New Orleans, La.	664	3	
Cincinnati, Ohio	163	1		New York, N.Y.	788	3	
Cleveland, Ohio	490	1		Pittsburgh, Pa.	428	2	
Detroit, Mich.	422	1		St. Louis, Mo.	408	2	
Knoxville, Tenn.	158	1					

Note: Mileage computations are via the best interstate or primary highways, not necessarily the most direct route of travel.

Sources: Rand McNally Road Atlas, 1979. Official Kentucky Mileage Map, 1979. Delivery time - Eagle Express Company, Inc., P.O. Box 679; Somerset, Kentucky 42501.

## Air

### Local

Russell County Airport\*  
Location: 1 1/2 miles north of Jamestown, 2 1/2 miles south of  
Russell Springs  
Runway: 1 paved  
Length: 2,800 feet (150 feet wide)  
Traffic  
Control: Wind sock (lighted)  
Lighting: Sunset to sunrise, rotating beacon  
Services: 100 octane fuel, tie-downs

### Nearest Scheduled Commercial Airline Service\*\*

Blue Grass Field  
Location: 4 1/2 miles west of Lexington, Kentucky; 85 miles  
north of Russell Springs  
Runways: 2 paved  
Length: 6,500 feet; 3,500 feet  
Traffic  
Control: Tower  
Lighting: Approach lighting system, beacon, runways and  
obstructions lighted, VASI  
Services: Delta, Frontier, Piedmont, and USAir airlines;  
Tennessee Airways commuter air carrier; fuel -  
24-hour service, 100, and jet fuel; repair service -  
major A & E repairs, Certified Avionics repair  
station; National Weather Service; flight  
instructions; charter service; storage; taxi,  
limousine and car rentals; restaurant  
Air Freight  
Service: Air freight terminal

\*A new fueling facility is being installed at the Russell County Airport at a projected cost of about \$40,000. This will include a 12,000 gallon storage tank with computerized pumps for dispensing 100 octane fuel. The project is expected to be completed by December 1981. Applications have been made to the Federal Government for funds to further expand and develop the airports facilities.

\*\*Commuter air carrier service is provided by Allegheny Commuter at the London-Corbin Airport which is located 3 miles south to London, Kentucky; 65 miles east of Russell Springs.



Bus - Cumberland Area Transit System (CATS)

Taxi - Taxi service is available at Russell Springs

Rental Services - Toll-free number for auto rentals.

Water

The nearest navigable waterway is the Kentucky River at Frankfort, Kentucky, 92 miles north of Russell Springs, where a six-foot navigation depth is maintained.

## POWER AND FUEL

### Electricity

Company serving Jamestown, Russell Springs and part of Russell County-  
Kentucky Utilities Company

Source of power - Kentucky Utilities Company

Total generating capacity - 2,883,767 KW

For industrial rates contact:

Industrial Development Department  
Kentucky Utilities Company  
One Quality Street  
Lexington, Kentucky 40507  
(606) 255-1461

Company serving major portion of Russell County - South Kentucky Rural  
Electric Cooperative Corporation

Source of power - East Kentucky Power Cooperative

Total generating capacity - 1,318,010 KW

For industrial rates contact:

Industrial Development Division  
East Kentucky Power Cooperative  
P.O. Box 707  
Winchester, Kentucky 40391  
(606) 744-4812

and/or

South Kentucky RECC  
925-929 North Main Street  
P.O. Box 910  
Somerset, Kentucky 42501  
(606) 678-4121

### Natural Gas

There is no natural gas service in Russell County at the present time.

## Other Fuels

### Propane

B&K Doxol Gas & Service  
Bernard Ridge  
Russell Springs, Kentucky 42642

Russell County Gas  
Rural Route 5, Box 81  
Russell Springs, Kentucky 42642

### Fuel Oils

Distillate fuel oil -

Aaron Oil Company (bulk plant)  
P.O. Box A  
Russell Springs, Kentucky 42642

Ashland Oil and Refining Company  
(bulk plant)  
P.O. Box 280  
Russell Springs, Kentucky 42642

Residual fuel oil - Arrangements must be made with the refinery.

Low sulphur content coal - Available in Kentucky.



## WATER AND SEWERAGE

### Water

Company serving Jamestown - Jamestown Municipal Water Works\*  
P.O. Box 99  
Jamestown, Kentucky 42629  
(502) 343-4185

Source - Lake Cumberland  
Treatment plant capacity - 275,000 gallons per day  
Average daily consumption - 100,000 gallons  
Peak daily consumption - 150,000 gallons  
Type treatment - Sedimentation, rapid sand filtration, chlorination  
Storage capacity - 650,000 gallons  
Size lines - 2, 4, 6, 8, 10, 12 and 16 inches  
Average pressure - 60 psi  
Average temperature - 68 degrees F.

### MONTHLY WATER RATES

1,500 gallons -	\$ 7.50 plus	25 cents per additional 100 gallons
4,500 gallons -	15.00 plus	23 cents per additional 100 gallons
10,000 gallons -	27.65 plus	21 cents per additional 100 gallons
20,000 gallons -	48.65 plus	19 cents per additional 100 gallons
40,000 gallons -	86.65 plus	17 cents per additional 100 gallons
(Commercial rate is 7.5 cents per additional 100 gallons)		
80,000 gallons -	\$154.65 plus	15 cents per additional 100 gallons

Tap-on charge: Inside city limits - \$100 plus labor and material

Outside city limits- \$125, residential  
\$150, commercial (for 3/4-inch tap)  
\$300, commercial (for 1 1/2-inch tap)  
\$450, commercial (for 2-inch tap)

\*A \$4 million, 2.5 million-gallon water treatment plant is scheduled for completion during spring 1982. Approximately 3.5 miles of 12 and 16-inch water mains have been installed to the industrial site. Also, a 500,000-gallon elevated storage tank has just been completed.

Company serving Russell Springs - City Sewer & Water Works\*  
P.O. Box 247  
Russell Springs, Kentucky 42642  
(502) 866-3981

Source - Wells

Treatment plant capacity - 500,000 gallons per day  
Average daily consumption - 240,000 gallons  
Peak daily consumption - 385,000 gallons  
Type treatment - Rapid sandfilters  
Storage capacity - 500,000 gallons  
Size lines - 4, 6, and 8 inches  
Average pressure - 45 psi  
Average temperature - 60 degrees F.

MONTHLY WATER RATES

First	2,000 gallons	\$4.30 (Minumum bill)
Next	3,000 gallons	1.70 per M gallons
Next	5,000 gallons	1.60 per M gallons
Next	15,000 gallons	1.50 per M gallons
Next	25,000 gallons	1.40 per M gallons
Next	50,000 gallons	1.30 per M gallons
All over	100,000 gallons	.75 per M gallons

Tap-on charge: \$100 - residential  
\$200 - commercial, industrial

Raw Water

Surface water sources - Lake Cumberland, Cumberland River  
Average discharge - Cumberland River near Rowena, Kentucky -  
9,198 cfs (40-year record, adjusted for storage, USGS)  
Expected ground water yield - 5 to 50 gpm over a western and north-  
central band of the county; 5 gpm or less over northern tip and  
southern section of county.

\*A 200,000-gallon elevated water storage tank in the Key Village Shopping Center was completed in October 1981. Also 14,000 feet of 8-inch PVC water main has been installed between the elementary school, the shopping center and the hospital.

## Sewerage

Company serving Jamestown - Jamestown Municipal Water Works\*  
P.O. Box 99  
Jamestown, Kentucky 42629  
(502) 343-4185

Design capacity - 250,000 gallons per day  
Average daily flow - 100,000 gallons  
Treatment - Primary and secondary  
Type treatment - Tricking filters, settling, digestion, drying beds  
and chlorination  
Treated effluent discharged into - Big Lily Creek  
Size of sanitary mains - 8 and 10 inches  
Size of storm mains - 16, 36, and 42 inches  
Rates - Sewer rates are equal to 50 percent of the monthly water bill.

Tap-on charge: Residential - \$125  
Business - 3/4-inch to 1-inch tap - \$150  
1 1/2-inch tap - \$300  
2-inch tap - \$450

Company serving Russell Springs - City Sewer and Water Works\*\*  
P.O. Box 247  
Russell Springs, Kentucky 42642  
(502) 866-3981

Design capacity - 350,000 gallons per day  
Average daily flow - 145,000 gallons  
Treatment - Primary and secondary  
Type treatment - Grit settling, aeration, primary clarifier,  
chlorination and drying beds  
Treated effluent discharged into - Lily Creek  
Size of sanitary mains - 8 and 10 inches  
Size of storm mains - 24 to 48 inches  
Rates - Sewer rates are 100 percent of monthly water bill.

Tap-on charge: Residential - \$100  
Commercial, industrial - \$400

\*Construction of a new \$4 million carousel-type sewage treatment plant is under way. Plans call for the plant to begin some phases of operation in Spring of 1982. Located halfway between the cities of Jamestown and Russell Springs, the plant will serve both communities when it is completed. The two cities will abandon their present sewage plants at that time. Jamestown is also in the process of constructing 15-to 18-inch and 24-inch sanitary sewers.

\*\*Approximately 3,400 feet of 8-inch sewer main has been installed from the present treatment plant to the Russell County Hospital. In addition, two new lift stations have been completed at the headwaters of Lily Creek.



## CLIMATE

### Russell County

#### Temperature

Normal (30-year record)	59.7 degrees
Average annual 1980	59.1 degrees
Record highest, September, 1954 (39-year record)	103.0 degrees
Record lowest, January, 1966 (39-year record)	-9.0 degrees
Normal heating degree days (30-year record)	3,478
(Heating degree day totals are the sums of negative departures of average daily temperatures from 65 degrees F.)	

#### Precipitation

Normal (30-year record)	46.18 inches
Mean annual snowfall (38-year record)	12.80 inches
Total precipitation 1980	40.46 inches
Mean number days precipitation (.01 inch or more) (38-year record)	127
Mean number days thunderstorms (38-year record)	47

Prevailing Winds (14-year record) Northeast

#### Relative Humidity (20-year record)

1 a.m.	79 percent
7 a.m.	85 percent
1 p.m.	59 percent
7 p.m.	62 percent

Source: U.S. Department of Commerce, Environmental Science  
Services Administration, Climatological Data, 1980.  
Station of record: Knoxville, Tennessee.

## LOCAL GOVERNMENT

### City

#### Jamestown

Structure - Mayor - 4-year term; 6 council members - 2-year terms;

Budget - General Fund \$128,000 (1981-82)

Water and Sewer Fund \$132,010 (1980-81)

Fees and licenses - Occupational license - \$24.50, unloading license - \$24.50 (some variations)

#### Russell Springs

Structure - Mayor - 4-year term; 6 council members - 2-year terms;

Budget 1981 - General Fund \$194,000

Water and Sewer \$185,000

Fees and licenses - Occupational license \$18 to \$75, unloading license - \$40 to \$60, vehicle sticker - \$7.50

### County

Structure - County Judge/Executive - 4-year term;

4 magistrates - 4-year terms

Budget 1980-81 - General Fund \$118,480,970; Road Fund \$57,209,858

### Assessed Value of Property, 1980

<u>Classes of Property</u>	<u>Jamestown</u>	<u>Russell Springs</u>	<u>Russell County</u>
Real Estate	\$8,768,441.00	\$17,800,000.00	\$112,797,006.00
Tangibles	1,652,099.00	6,357,000.00	23,791,276.00

## Property Taxes

All property in Kentucky is assessed at 100 percent of fair cash value.

Land and buildings are taxed by the state and may be taxed by local jurisdictions. The state rate is \$0.241 per \$100 of assessed valuation.

Manufacturing machinery, raw materials inventories, pollution control equipment, and goods in the process of manufacture are not subject to local taxation. The state rate is \$0.15 per \$100.

Other tangible personal property owned by manufacturers (automobiles, trucks, finished goods, office furniture, office equipment) is taxed by the state at \$0.45 per \$100 and may be taxed by local jurisdictions.

Property stored in public warehouses in a transit status is not subject to local taxation. The state rate is only \$0.015 per \$100.

Intangible personal property located in Kentucky (money in hand, shares of stock, notes, bonds, accounts receivable, and other credits) is taxed by the state at \$0.25 per \$100, and is not subject of local taxation.

Private leaseholds in industrial facilities owned by cities or counties and financed by industrial revenue bonds are subject to a state tax of \$0.015 per \$100 of value (essentially the lessee's equity, adjusted for appreciation or depreciation). Local taxation is not permitted.

### Combined State and Local Rates Per \$100 Valuation, 1980\* (100% assessment)

	<u>Inside City of Jamestown</u>	<u>Inside City of Russell Springs</u>	<u>Outside City</u>
1. Land and buildings	\$0.798	\$0.799	\$0.539
2. Mfg. machinery, raw materials, goods in process, pollution control equipment	0.150	0.150	0.150
3. Finished goods, office equipment, vehicles, other tangibles	1.007	1.008	0.748
4. Intangibles (accounts rec., notes, bonds, etc.)	0.250	0.250	0.250
5. Leaseholds in industrial revenue bond financed plants	0.015	0.015	0.015

\*Kentucky Department of Commerce



## Planning and Zoning

City agency - Jamestown Planning Commission  
Zoning enforced - No local codes enforced

Russell Springs has no planning and zoning commission at the present time.

Manadatory state codes enforced - Kentucky Plumbing Code, National Electric Code, Kentucky Boiler Regulations and Standards, National Fire Protection Association Standards of Safety (for buildings with an occupancy of less than 100 persons), Kentucky Building Code (modeled after BOCA code and applying to buildings with an occupancy of 100 or more persons)

## Safety

<u>Police</u>	<u>Jamestown</u>	<u>Russell Springs</u>	<u>Russell County</u>
Total staff	5	5	3
Radio-patrol cars	2	3	2

## Fire

American Insurance Association Fire Rating	7	8	10
Volunteers	20	22	*

## Rescue Service

Russell County Rescue Squad:

Number of volunteers - 50

Equipment - 4 vehicles, 1 5-ton porta-power unit, chain saws, diving gear, light rescue ropes and harnesses, 5 boats, 6 outboard motors, dragging equipment

Personnel training - 12 emergency medical technicians, 22 volunteers with advanced first-aid training, 3 first aid instructors; all members trained in first aid.

\*Both the Jamestown and Russell Springs Volunteer Fire Department provide fire protection service to county residents.

Refuse Collection and Disposal

	<u>Jamestown</u>	<u>Russell Springs</u>	<u>Russell County</u>
Type service	Municipal	Private	Private
Fee charged:			
residential	\$2.00	\$2.50	By contract
business	\$3.50, \$5.00	By contract	By contract
industrial	-	By contract	By contract
residential	\$5.00	-	-
(outside city limits)			
Collection frequency:			
residential	Weekly	Weekly	By contract
business	Weekly or semi-weekly	By contract	By contract
industrial	Semi-weekly	By contract	By contract
Disposal method	Landfill	Landfill	Landfill

## EDUCATION

### Public Schools

### Russell County

Total Enrollment (May 1981)	2,635
Elementary	1,775
High School	860
Student-Teacher Ratio	17-1
Elementary	15-1
High School	24-1
Percent High School Graduates to College (1980)	34.4
Expenditures Per Pupil (1979-80)	\$1,159.48
Bonded Indebtedness (June 30, 1980)	\$1,469,000

\*Improvements recently completed in the Russell County School System include the renovation of the Russell Springs and Jamestown Elementary Schools, the re-wiring of all schools, construction of a new library and two classrooms at Jamestown Elementary, and the Russell County High School gymnasium.



## Area Colleges and Universities

<u>Name</u>	<u>Location &amp; Mileage (from Russell Springs)</u>	<u>Enrollment (Fall, 1980)</u>	<u>Highest Degree Conferred</u>
Lindsey Wilson College	Columbia (13)	408	Associate
Somerset Community College	Somerset (28)	980	Associate
Campbellsville College	Campbellsville (32)	698	Baccalaureate
Centre College	Danville (50)	749	Baccalaureate
Sue Bennett College	London (62)	256	Associate
St. Catharine College	St. Catharine (63)	243	Associate
Berea College	Berea (70)	1,514	Baccalaureate
Elizabethtown Community College	Elizabethtown (73)	1,930	Associate
Asbury College	Wilmore (74)	1,222	Baccalaureate
Cumberland College	Williamsburg (80)	2,162	Baccalaureate
Eastern Kentucky University	Richmond (83)	14,185	Masters, Specialist/ Doctorate*
Western Kentucky University	Bowling Green (83)	13,358	Masters, Specialist/ Doctorate**
Lexington Tech- nical Institute	Lexington (85)	2,111	Associate
Transylvania University	Lexington (85)	810	Baccalaureate/ Masters***
University of Kentucky	Lexington (85)	23,468	Doctorate, M.D., D.M.D., J.D.

\*Joint doctoral degree programs are offered in cooperation with the University of Kentucky, Lexington, and cooperative doctoral degree programs are offered with Michigan State University and the University of Maryland.

\*\*Joint doctoral degree programs are offered in cooperation with the University of Kentucky, Lexington, and cooperative doctoral degree programs are offered with the University of Louisville.

\*\*\*Courses in the masters degree program are taught on the Transylvania campus by faculty members of Xavier University of Cincinnati. The degree is issued by Xavier University.

## Vocational Schools

Both the state vocational-technical schools and the area vocational education centers are operated by the Kentucky Department of Education. The state vocational-technical schools enroll persons full time who are at least 16 years of age and not in school. These students attend classes for six hours each day. The area vocational education centers are designed to accommodate high school students who are at least 15 years of age. These students attend vocational school for three hours each day. The state vocational-technical schools and the area education centers offer evening courses to enable working adults to upgrade current job skills.

### Nearest State School

Location	Somerset State Vocational-Technical School
Mileage from Russell Springs	Somerset  28
Curriculum	Business and Office Accounting/Jr. Management Clerical Data Processing Secretarial Health and Personal Services Occupations Health Careers Licensed Practical Nursing* Industrial Education Appliance Repair Auto Body Repair Auto Mechanics Aviation Maintenance Technician Diesel Mechanics Drafting Graphic Arts (Printing) Machine Shop Technical Electronics Welding Learning Resource Center

(Contd.)

\*This course is taught in cooperation with the Danville School of Practical Nursing.

Nearest Area Education Center

Location	Russell County Area Vocational Education Center
Curriculum	Russell Springs
	Health and Personal Service Occupations
	Health Careers
	Industrial Education
	Auto Mechanics
	Carpentry
	Residential Electricity
	Welding

Arrangements can be made to provide training in the specific production skills required by an industrial plant. Instruction may be conducted either in the vocational school or in the industrial plant, depending upon the desired arrangement and the availability of special equipment.



## HEALTH

### Local Medical Personnel

Physicians - 10  
Dentists - 4

### Hospitals

<u>General Hospital</u>	<u>Location</u>	<u>Beds</u>
Russell County Hospital	Russell Springs	45

General hospital facilities - Operating room, emergency room, X-ray, laboratory, recovery room, physical therapy, respiratory therapy, pharmacy

Medical staff - 13 registered nurses, 14 licensed practical nurses; total hospital staff includes 85 full-time employees and 16 part-time employees

### Other Medical Facilities

Lake Cumberland Medical Arts Clinic\*

Lake Cumberland Comprehensive Care Center

### Ambulance Service

Name - Russell County Ambulance Service  
Staff - 1 supervisor, 11 emergency medical technicians, 2 drivers, 4 dispatchers  
Service - 24-hour  
Equipment - 4 fully-equipped ambulances

### Public Health

Facility - Russell County Health Department\*\*  
Staff - Health environmentalist, 2 registered nurses, 2 clerk typist, dental hygienist (part-time)

\*The Lake Cumberland Medical Arts Clinic opened in May of 1981. The 600,000, 14,400 square-foot building houses a full laboratory and X-ray facility, as well as a pharmacy and office space for eight physicians.

\*\*The Russell County Health Department contracts with the Lake Cumberland Health Department for family planning and chest clinics.

## OTHER LOCAL FACILITIES

### Communications

Telephone - Duo County Telephone Cooperative, Inc.  
Services - Standard

Telegraph - Western Union  
Services - Toll-free number, 1-800-325-5100

Postal - U.S. Post Office	<u>Jamestown</u>	<u>Russell Springs</u>
Class -	Second	Second
Mail received -	Once daily	Twice daily
Mail dispatched -	Once daily	Twice daily

Newspapers -	Russell County News	The Times Journal
Weekly and circulation -	2,600	5,400
Other papers received from -	Louisville, Lexington, Somerset and Columbia, Kentucky	Louisville, Lexington, Somerset and Columbia, Kentucky

Radio -	WJKY - AM	WJRS - FM
Stations received from -	Lexington and Louisville, Kentucky; Knoxville and Nashville, Tennessee	Lexington and Louisville, Kentucky; Knoxville and Nashville, Tennessee

Television -		
Cable service		
Reception from -	Lexington, Louisville and Bowling Green Kentucky; Knoxville, Tennessee	Lexington, Louisville and Bowling Green Kentucky; Knoxville, Tennessee

Kentucky Educational Television -	Somerset transmitter, Channel 29	Somerset transmitter, Channel 29
-----------------------------------	----------------------------------	----------------------------------

### Library Services

Public library - Russell County Public Library

Size collection - 33,718 volumes

Circulation, 1979-80 - Library-48,676; Bookmobile-28,442

Services - Bookmobile, story hour, records, projector, art,  
microfilm reader-printer, reading group, summer reading group,  
meeting room, tapes

### Religious Institutions

	<u>Jamestown</u>	<u>Russell Springs</u>
Denominations -	Baptist	Baptist
	Catholic	Christian
	Christian	Church of God
	Church of Christ	Church of God of Prophecy
	Church of God	Grace Baptist Mission
	Methodist	Separate Baptist
	Nazarine	United Methodist
Nearest Synagogues -	Lexington, 85 miles north of Russell Springs	
Congregations -	Adath Israel (reform)	
	Ohavey Zion (traditional)	



## Financial Institutions

<u>Banks</u>	<u>Assets</u>	<u>Deposits</u>	<u>Statement Date</u>
<u>Jamestown</u>			
Bank of Jamestown*	\$20,995,998.84	\$17,723,329.19	6/30/81
<u>Russell Springs</u>			
First National Bank**	25,125,929.74	21,279,644.70	12/31/80
<u>Savings and Loan Associations</u>	<u>Assets</u>	<u>Savings Accounts</u>	<u>Statement Date</u>
Mutual Federal Savings and Loan Association***	\$110,766,131.83	\$93,432,363.99	12/31/80

## Hotels and Motels

	<u>Russell County</u>
Total number -	14****
Total rooms -	217

\*The Bank of Jamestown is constructing a new branch of the bank at the intersection of Highways 80 and 910.

\*\*The First National Bank recently completed construction of a new building at the intersection of U.S. 127 and Kentucky 80. The new structure houses the main office, and the older building downtown has been converted to a branch office.

\*\*\*Figures for Mutual Federal include the main office located in Somerset and three branch offices located in Russell Springs, Corbin, and Monticello.

\*\*\*\*Excluding Lake Cumberland State Resort Park.

## Clubs and Organizations

### Jamestown

American Legion  
Business and Professional Women's Club  
Career Club  
Chamber of Commerce  
DeMolay  
Eastern Star  
Fish and Game Club  
4-H  
Future Homemakers of America (FHA)  
Future Farmers of America (FFA)  
Girl Scouts  
Homemakers Club  
Lions  
Masonic Lodge  
Russell County Development Association

### Russell Springs

American Legion  
Boy Scouts  
Business and Professional Women's Club  
Chamber of Commerce  
DeMolay  
Disabled American Veterans  
Eastern Star  
4-H  
Future Farmers of America (FFA)  
Girl Scouts  
Homemakers Club  
IOOF  
Jaycees  
Lions  
Masonic Lodge  
Merchants Association  
VFW  
Welcome Wagon  
Woman's Club

## RECREATION

### Local

Public recreation facilities in Jamestown include a park with a ballfield, two lighted tennis courts, two croquet courts, a playground and a picnic area. Paving, totalling \$20,000, has been done at the park and a \$10,000 storage building-concession stand is to be completed by the end of summer 1981. In addition, lights are to be installed on the softball field during the summer of 1982, at a projected cost of \$20,000.

Public recreation facilities in Russell Springs include a park with two tennis courts, a ballfield, three basketball courts, a playground and picnic area, and a covered pavilion. Lighting has recently been installed on the ballfield at a cost of \$42,000. A concession stand and restrooms have also been constructed on the park grounds. Projects currently under way include renovation of the softball field, and the construction of a sand-top ballfield, a par-3, 9-hole golf course, and a frisbee-golf course.

Private recreation facilities in Russell County include a country club with a 9-hole golf course and swimming pool, three boat docks, a drive-in movie, and a disco. A bowling alley and country music build-are being constructed.

Lake Cumberland State Resort Park, 10 miles south of Jamestown, is a 3,000-acre park located on the 50,000-acre Lake Cumberland, which sports excellent bass, bluegill, and crappie fishing. The park features a modern resort lodge which is perched on a high bluff above the lake. The lodge has a swimming pool, a dining room, a gift shop, and a multi-purpose convention center. Other park facilities include an additional swimming pool, riding stables, tennis courts, hiking trails, a 9-hole golf course, miniature golf, a picnic area, a playground, a 350-seat amphitheater, and a nature center. A marina offers houseboats, and fishing boats and motors for rent plus year-round launching ramps.

### Area (Within 60 miles)

Green River Lake State Park near Campbellsville, 32 miles northwest of Russell Springs, is made up of 1,300 acres surrounding an 8,200-acre lake. The park is open year-round and offers 96 campsites, a beach, boat docks, fishing, swimming, and a picnic area.

General Burnside State Park, 36 miles east of Russell Springs, is Kentucky's only island state park. Rising out of Lake Cumberland and surrounded by beautiful Kentucky mountains, the park offers excellent fishing, an 18-hole golf course which is open year-round, a picnic area, a 150-site camping area for tents and recreational vehicles, a marina on the mainland near the park, and planned recreation.

Issac Shelby State Shrine, 40 miles north of Russell Springs near Danville, is the burial site of Kentucky's first governor and one of the Commonwealth's foremost statesmen.

(Contd.)



### Area (Within 60 miles)

Dale Hollow Lake State Park, 43 miles south of Russell Springs, is located on 3,497 lakeside acres in southeastern Cumberland County. Park facilities include a marina, a picnic area, and 144 sites for tent and trailer camping. A private resort located on the lake provides facilities for swimming, fishing, boating, and playground activities, and offers cabin and houseboat rentals. Another private campground has tent and trailer camping, houseboat rentals, and a picnic area.

Constitution Square State Shrine, 50 miles north of Russell Springs in Danville, is a reproduction of Kentucky's first courthouse square, including the original 1792 post office which was the first in the west.

Herrington Lake, 58 miles north of Russell Springs near Danville and Harrodsburg, was developed by the Kentucky Utilities Company in 1925. Dix River Dam near Pleasant Hill is located on the 1,860-acre lake. Fishing, boating, and swimming can all be enjoyed on the lake. Camping and fishing facilities are available near Danville and Harrodsburg.

William Whitley House State Shrine, 58 miles northeast of Russell Springs near Stanford, is the first brick house west of the Allegheny Mountains, built 1787-94. Whitley laid out Kentucky's first race track here and started U.S. counter-clockwise racing. The facility provides picnic areas in a 10-acre park.

Old Fort Harrod State Park, 59 miles north of Russell Springs, is a 28-acre park in Harrodsburg that features a full-scale reproduction of the original Fort Harrod. The park also contains the log cabin where Abraham Lincoln's parents were wed, the Mansion Museum which houses mementos associated with the great periods of Kentucky history, a pioneer cemetery, and a federal monument dedicated to pioneers. The "Legend of Daniel Boone," an outdoor drama which brings to life on stage the men and women who made Kentucky, is performed in the park amphitheatre during the summer months.

Old Mulkey Meeting House State Shrine, 60 miles southwest of Russell Springs near Tompkinsville, offers picnic areas and playgrounds. The house was built in 1804, and is the oldest log meeting house in the state. Daniel Boone's sister is buried in the graveyard and authentic records written in pokeberry ink are on display.

Laurel River Lake, a new 4,200-acre lake in Daniel Boone National Forest, is located 60 miles east of Russell Springs near Corbin. Camping and fishing areas are available, and a variety of other recreational facilities are being developed.

Wood Creek Lake, 60 miles east of Russell Springs near London, also provides a fishing area.

(Contd.)

Area (Within 60 miles)

Barren River Lake State Resort Park, 60 miles west of Russell Springs near Glasgow, is a full-facility resort park offering a resort lodge, a coffee shop, cottages, a lodge pool, a beach, riding stables, nature trails, open and covered boat slips, a 9-hole par-3 golf course, lighted handball and tennis courts, shuffleboard, park camping with a service building, a restaurant, fishing and pleasure boat rentals, picnic areas, and a playground. Barren River Lake, which covers 10,000-acres, is a popular area for skiing, sailing, fishing, and swimming.