

1982

# Industrial Resources: Scott County - Georgetown

Kentucky Library Research Collections  
Western Kentucky University, [spcol@wku.edu](mailto:spcol@wku.edu)

Follow this and additional works at: [https://digitalcommons.wku.edu/scott\\_cty](https://digitalcommons.wku.edu/scott_cty)

 Part of the [Business Administration, Management, and Operations Commons](#), [Growth and Development Commons](#), and the [Infrastructure Commons](#)

---

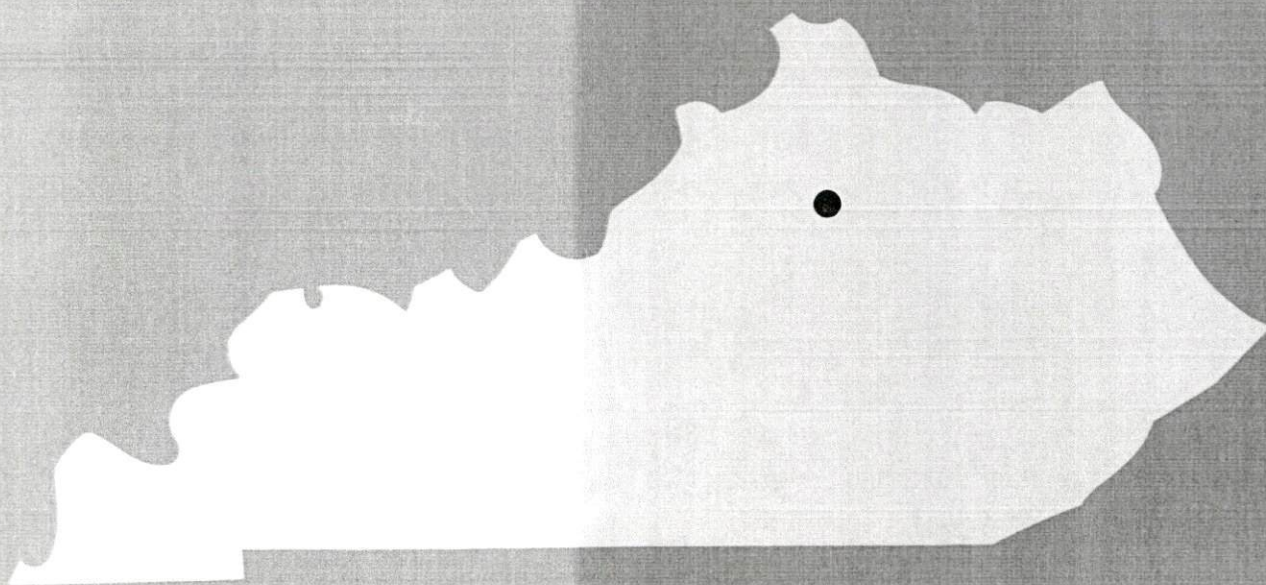
## Recommended Citation

Kentucky Library Research Collections, "Industrial Resources: Scott County - Georgetown" (1982). *Scott County*. Paper 15.  
[https://digitalcommons.wku.edu/scott\\_cty/15](https://digitalcommons.wku.edu/scott_cty/15)

This Report is brought to you for free and open access by TopSCHOLAR®. It has been accepted for inclusion in Scott County by an authorized administrator of TopSCHOLAR®. For more information, please contact [topscholar@wku.edu](mailto:topscholar@wku.edu).

IR Scott County  
325

**A comprehensive  
report on  
Georgetown, Ky.**



**KENTUCKY & CO.**  
The state that's run like a business.

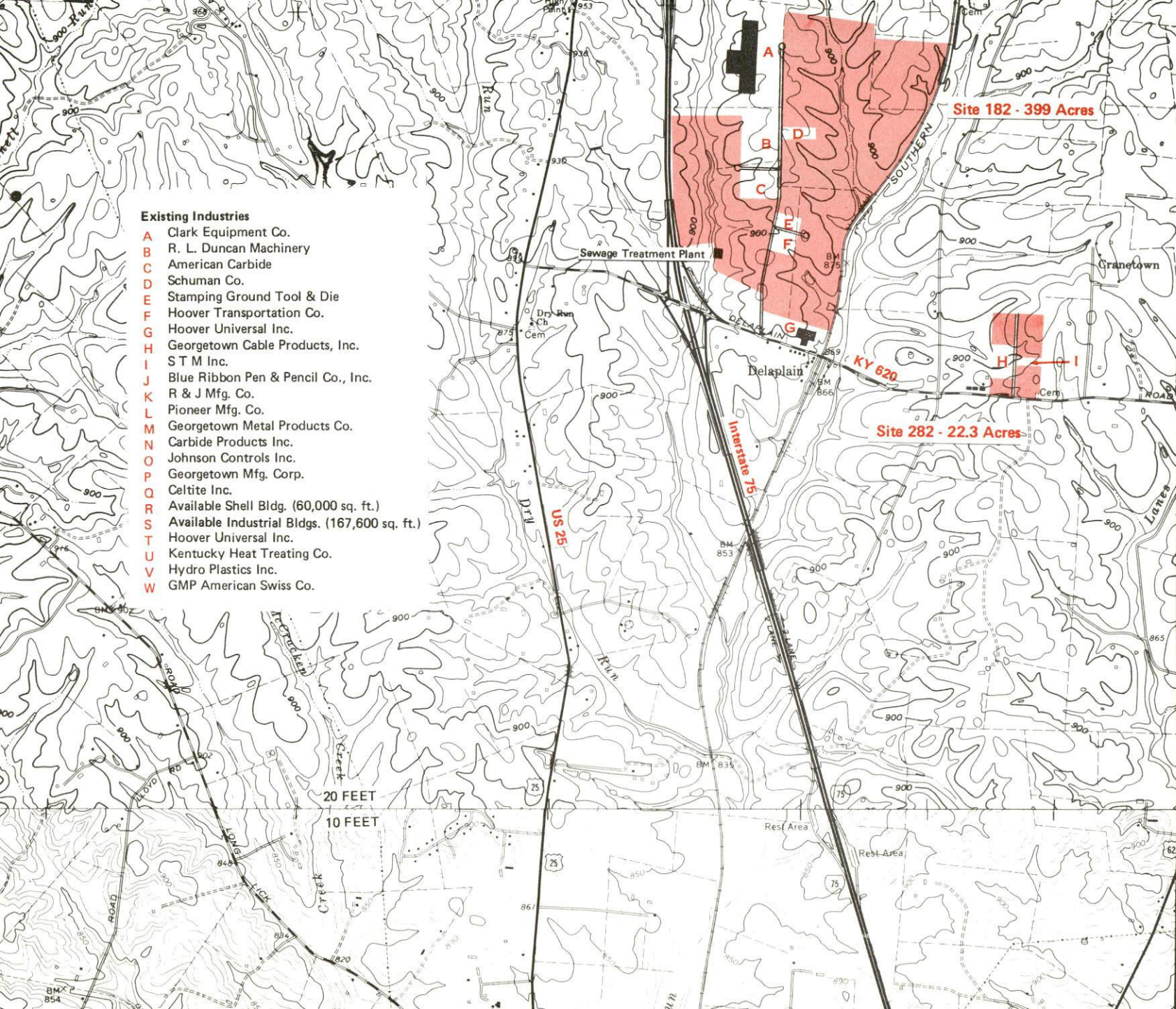


# GEORGETOWN, KENTUCKY --- Index to Industrial Sites --- 1982

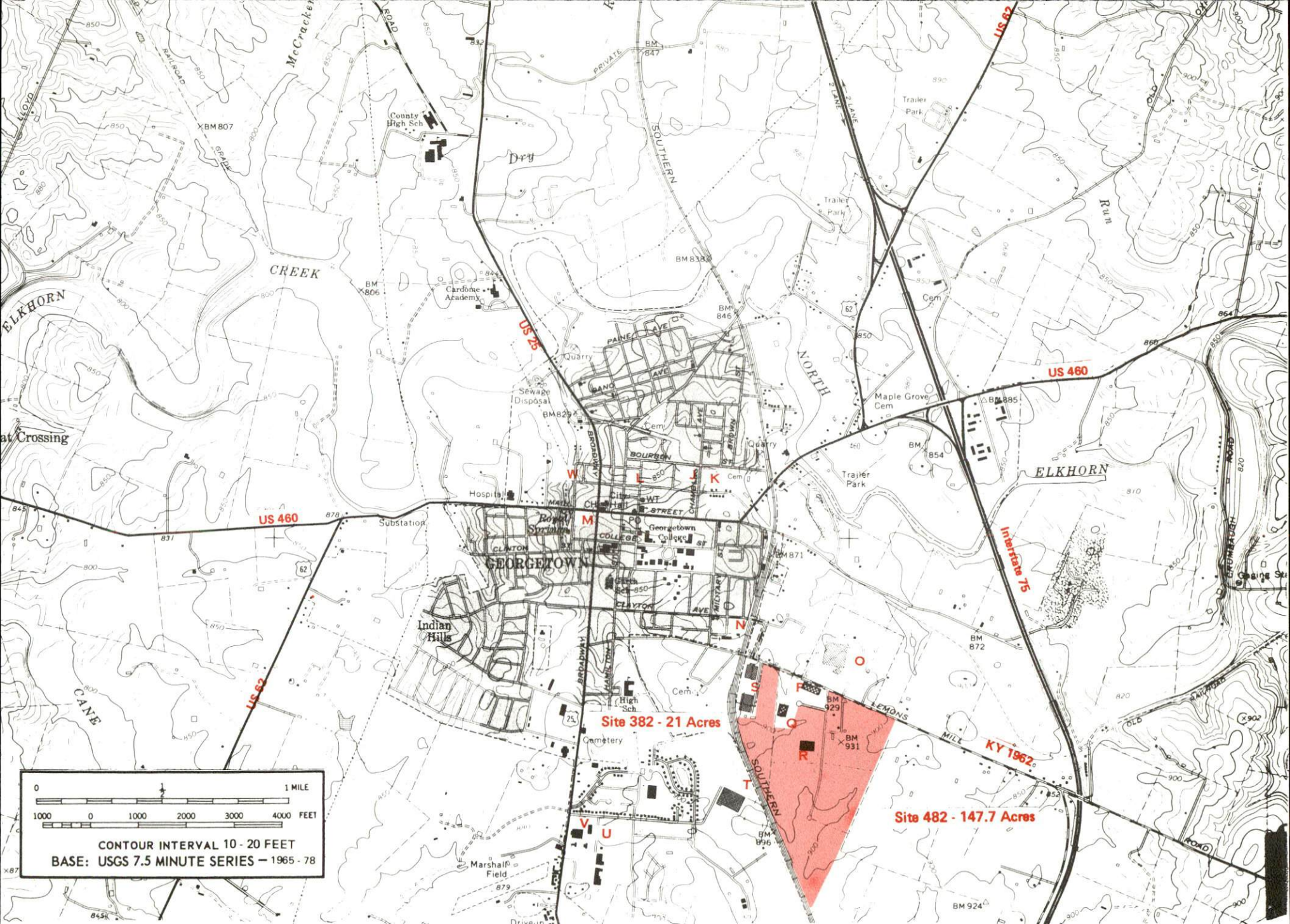
For more information contact the Department of Economic Development, Office of Business Development, Industrial Development Division, Capital Plaza Tower, Frankfort, Kentucky 40601 (502-564-7140).

## Existing Industries

- A Clark Equipment Co.
- B R. L. Duncan Machinery
- C American Carbide
- D Schuman Co.
- E Stamping Ground Tool & Die
- F Hoover Transportation Co.
- G Hoover Universal Inc.
- H Georgetown Cable Products, Inc.
- I S T M Inc.
- J Blue Ribbon Pen & Pencil Co., Inc.
- K R & J Mfg. Co.
- L Pioneer Mfg. Co.
- M Georgetown Metal Products Co.
- N Carbide Products Inc.
- O Johnson Controls Inc.
- P Georgetown Mfg. Corp.
- Q Celtite Inc.
- R Available Shell Bldg. (60,000 sq. ft.)
- S Available Industrial Bldgs. (167,600 sq. ft.)
- T Hoover Universal Inc.
- U Kentucky Heat Treating Co.
- V Hydro Plastics Inc.
- W GMP American Swiss Co.







0 1000 0 1000 2000 3000 4000 FEET  
1 MILE  
CONTOUR INTERVAL 10 - 20 FEET  
BASE: USGS 7.5 MINUTE SERIES - 1965 - 78

Site 382 - 21 Acres

Site 482 - 147.7 Acres



A COMPREHENSIVE REPORT ON  
GEORGETOWN, KENTUCKY

Prepared by  
The Kentucky Department of Economic Development  
Division of Research and Planning  
in cooperation with  
The Georgetown-Scott County Chamber of Commerce

1982



## TABLE OF CONTENTS

<u>Chapter</u>	<u>Page</u>
INDUSTRIAL SITES .....	1
GEORGETOWN, KENTUCKY - A RESOURCE PROFILE .....	1
THE LABOR MARKET AREA .....	3
Population .....	3
Labor Force Characteristics of Residents, 1981 .....	3
Georgetown Manufacturing Firms, Their Products and Employment .....	4
Labor Organizations in Manufacturing Firms .....	7
Industrial Services .....	7
Estimated Male Labor Supply .....	8
Estimated Female Labor Supply .....	9
Average Weekly Wages by Industry, by Place of Work, 1981 .....	10
Per Capita Personal Income .....	12
TRANSPORTATION .....	13
Rail .....	13
Highways .....	13
Truck Service .....	13
Air .....	16
Bus .....	17
Taxi .....	17
Rental Services .....	17
Water .....	17
POWER AND FUEL .....	18
Electricity .....	18
Natural Gas .....	19
Other Fuels .....	19
WATER AND SEWERAGE .....	21
Public Water Supply .....	21
Raw Water .....	23
Sewerage .....	24
CLIMATE .....	25

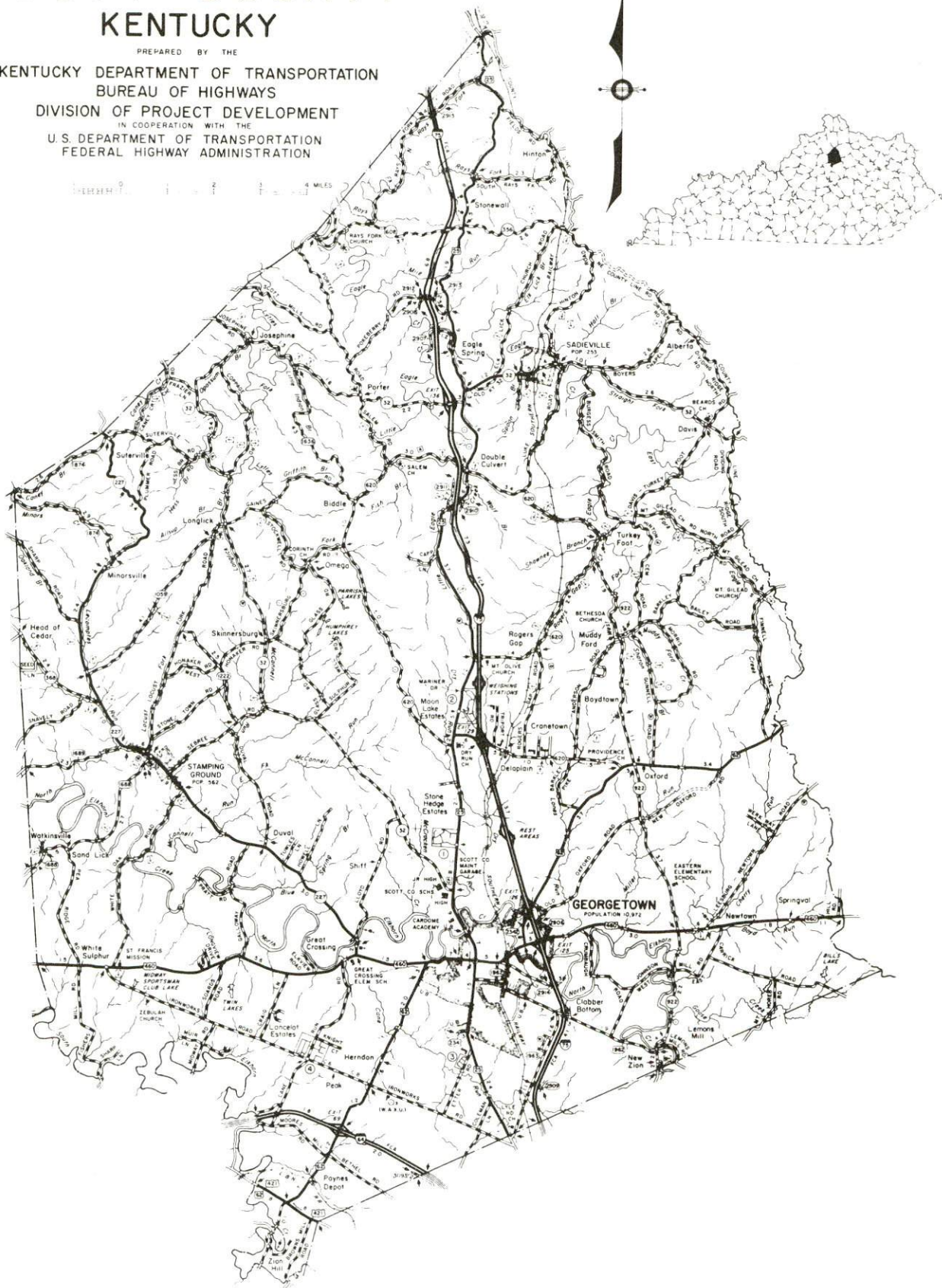


<u>Chapter</u>	<u>Page</u>
LOCAL GOVERNMENT .....	26
City .....	26
County .....	26
Assessed Value of Property, 1981 .....	26
Property Taxes .....	27
Combined State and Local Rates Per \$100 Valuation, 1981 .....	27
Utilities Gross Receipts Tax for Schools .....	28
Occupational License Tax for Schools .....	28
Planning and Zoning .....	28
Safety .....	28
Police .....	28
Fire .....	28
Refuse Collection and Disposal .....	29
EDUCATION .....	30
Public Schools .....	30
Area Colleges and Universities .....	31
Vocational Schools .....	32
HEALTH .....	35
Local Medical Personnel .....	35
Hospitals .....	35
Other Medical Facilities .....	35
Ambulance Service .....	35
Public Health .....	36
OTHER LOCAL FACILITIES .....	37
Communications .....	37
Library Services .....	38
Religious Institutions .....	38
Financial Institutions .....	39
Hotels and Motels .....	39
Clubs and Organizations .....	39
RECREATION .....	41



1982 EDITION  
GENERAL HIGHWAY MAP  
**SCOTT COUNTY**  
**KENTUCKY**

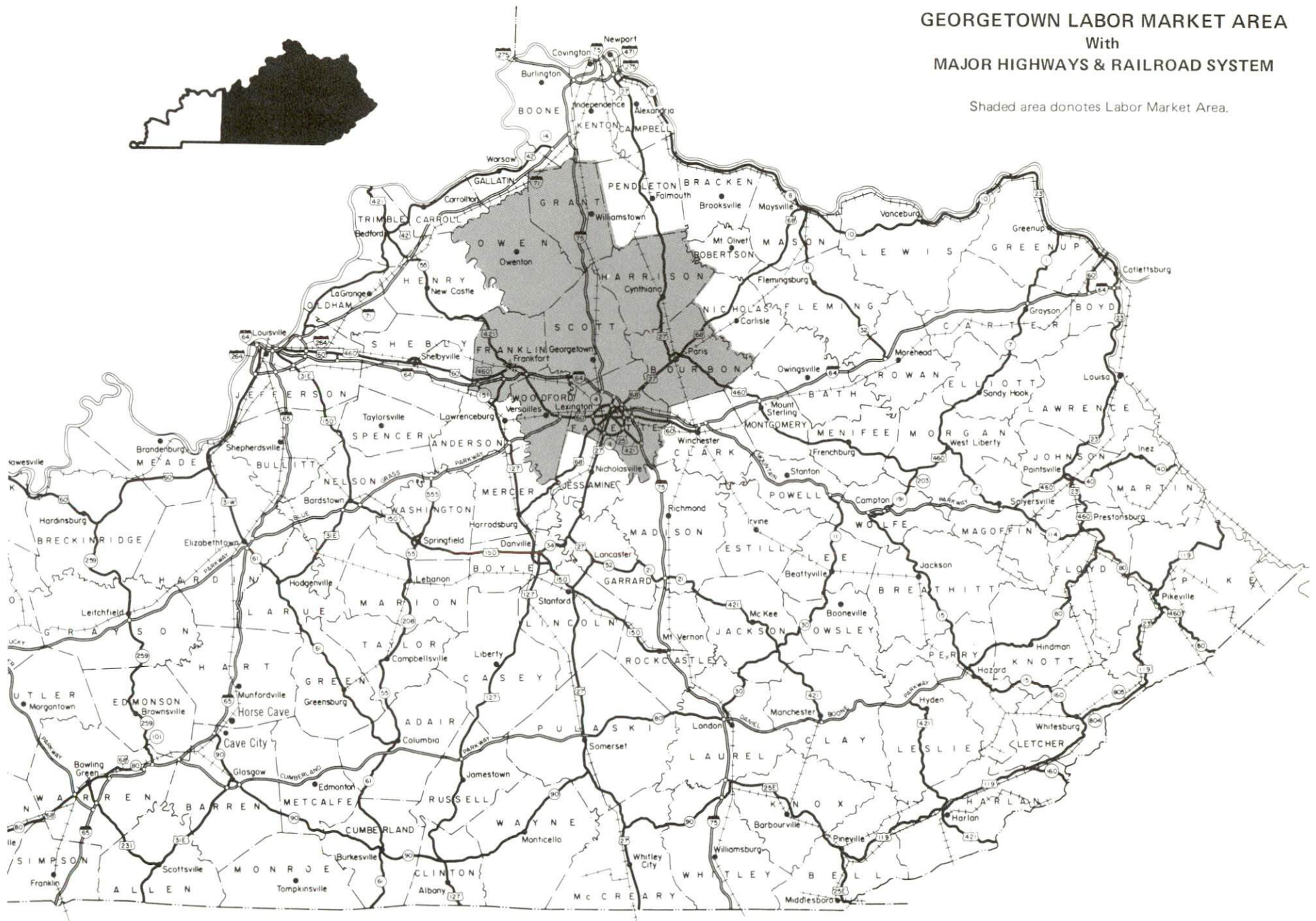
PREPARED BY THE  
KENTUCKY DEPARTMENT OF TRANSPORTATION  
BUREAU OF HIGHWAYS  
DIVISION OF PROJECT DEVELOPMENT  
IN COOPERATION WITH THE  
U.S. DEPARTMENT OF TRANSPORTATION  
FEDERAL HIGHWAY ADMINISTRATION





# GEORGETOWN LABOR MARKET AREA With MAJOR HIGHWAYS & RAILROAD SYSTEM

Shaded area donotes Labor Market Area.



## GEORGETOWN, KENTUCKY - A RESOURCE PROFILE

Georgetown, the county seat of Scott County and a 1981 "Kentucky Certified City," is located in central Kentucky's famous Bluegrass Region. Georgetown, only two miles from Interstate 75 and nine miles from Interstate 64, is ideally located for both north-south and east-west travel. Georgetown's location is only 16 miles north of Lexington, Kentucky; 72 miles east of Louisville, Kentucky; and 71 miles south of Cincinnati, Ohio. Georgetown had a 1980 population of 10,972.

Scott County covers 284 square miles and had a 1980 population of 21,813.

### The Economic Framework

Total employment in Scott County in 1981 averaged 11,650 with 10,530 persons employed in nonagricultural jobs. Manufacturing provided 2,370 jobs, 970 persons worked in service occupations, and wholesale and retail trade provided 980 jobs. Manufacturing employment is greatest in the fabricated metal products, nonelectrical machinery, and the instruments and related products industries.

Per capita personal income in Scott County in 1980 was \$7,774 or \$112 above the state average. Between 1976 and 1980 per capita income increased by 47 percent.

Georgetown is the hub of a labor market area which includes Scott and its seven adjoining counties. Area employment in 1981 averaged 175,840 with 167,660 employed in nonagricultural jobs. Manufacturing provided 30,790 jobs, wholesale and retail trade provided 32,600 jobs and 25,550 persons were employed in service occupations.

### Resources for Growth

1. Labor Supply - There is a current labor supply of 12,930 men and 11,600 women available for industrial jobs in the labor market area. In addition, 13,480 young men and 12,850 young women in the area will become 18 years of age before 1986 and potentially available for work.

2. Transportation - The Southern Railway System provides Georgetown with main line service. Interstate 75 is two miles from downtown Georgetown and Interstate 64 is only nine miles south of the city. Georgetown is also served by U.S. Highways 25, 62 and 460. Thirty common carriers have the authority to serve Georgetown.

Marshall Field, accommodating small aircraft with a 2,000 foot turf runway, is located one mile south of Georgetown. The nearest airport providing scheduled airline service and an air freight terminal is Blue Grass Field at Lexington, 20 miles south of Georgetown.



3. Utilities and Fuel - Kentucky Utilities Company provides electric power to Georgetown and part of Scott County. Harrison County RECC and Owen County RECC also supply electricity to Scott County. Natural gas service is provided to Georgetown by Columbia Gas of Kentucky, Inc. There are three distributors of propane and eight distributors of distillate fuel oil within 16 miles of Georgetown.

4. Education - The Scott County Public School System serves approximately 4,000 students.

Georgetown is the home of Georgetown College, a coeducational liberal arts school. The four-year college confers degrees of Bachelor of Arts, Bachelor of Science, Bachelor of Science in Medical Technology, Bachelor of Music Education, and Master of Arts in Education. Georgetown College had a Fall 1981 enrollment of 1,263.

In addition, nine other institutions of higher learning are within 55 miles.

The Central Kentucky State Vocational-Technical School in Lexington, 16 miles south, offers training in 19 courses. The Northside and Southside Area Vocational Education Centers offer training in 17 different courses.

## THE LABOR MARKET AREA

The Georgetown Labor Market Area includes Scott County and the adjoining Kentucky counties of Bourbon, Fayette, Franklin, Grant, Harrison, Owen, and Woodford.

POPULATION			
Area	1980	1970	Percent Nonwhite
Georgetown	10,972	8,629	10.0
Labor Market Area	342,389	291,289	N/A
Scott County	21,813	17,948	7.3
Bourbon County	19,405	18,476	10.2
Fayette County	204,165	174,323	14.5
Franklin County	41,830	34,481	8.7
Grant County	13,308	9,999	0.4
Harrison County	15,166	14,158	3.2
Owen County	8,924	7,470	2.5
Woodford County	17,778	14,434	8.0

Note: The 1980 counts of population by race are provisional.

Sources: U.S. Department of Commerce, Bureau of the Census, 1980 Census of Population and Housing, March 1981; 1980 Census of Population, Number of Inhabitants. Population Research Unit, Urban Studies Center, University of Louisville, Kentucky Demographics: The 1980 Census of Kentucky, Characteristics of Population, Households, Housing, January 1982.

LABOR FORCE CHARACTERISTICS OF RESIDENTS, 1981		
	Scott County	Labor Market Area
Civilian Labor Force	12,265	185,300
Employment	11,652	175,841
Agricultural	1,118	8,178
Nonagricultural	10,534	167,663
Unemployment	613	9,459
Rate of Unemployment (%)	5.0	5.1

Source: Kentucky Cabinet for Human Resources, Kentucky Labor Force Estimates, Annual Averages, 1981.



GEORGETOWN MANUFACTURING FIRMS,  
THEIR PRODUCTS AND EMPLOYMENT

<u>Firm (Establishment date)</u>	<u>Product</u>	<u>Employment</u>			<u>Labor Unions</u>
		<u>Total</u>	<u>Male</u>	<u>Female</u>	
American Carbide Corporation (1982)	Carbide tipped mining tools	15	--	--	
Blue Ribbon Pen and Pencil Company, Inc. (1958)	Imprinted pens and pencils	150	15	135	
Carbide Products, Inc. (1943)	Carbide tools and accessories, cutter blades, boring tools	42	27	15	
Celtite, Inc. (1981)	Mine roof stabilization equipment	60	--	--	
Clark Equipment Company (1973)	Electric fork lifts	428	329	99	
Frye Printing Company, Inc. (1946)	Newspaper, offset printing, letterpress printing	6	3	3	
GMP American Swiss Company (1970)	Screw machine products, centerless grinding, metal stampings	32	18	14	
Georgetown Cable Products, Inc. (1962)	Electronic wiring harnesses, electronic subassemblies	105	20	85	
Georgetown Manufacturing Corporation (1981)	Machine parts	142	131	11	
Georgetown Metal Products Company (1959)	Metal stampings, wire forms	50	14	36	

<u>Firm</u> (Establishment date)	<u>Product</u>	<u>Employment</u>			<u>Labor Unions</u>
		<u>Total</u>	<u>Male</u>	<u>Female</u>	
Georgetown Tool and Manufacturing, Inc. (1969)	Precision tooling, special machined parts	22	17	5	
Hoover Universal, Inc., Automotive Products Division (1961)	Auto seat springs, frames	331	285	46	
Hoover Universal, Inc., Furniture Components Division #1 (1960)	Bed and furniture springs	52	45	7	
Hoover Universal, Inc., Furniture Components Division #2 (1961)	Sofa sleeper mechanisms, office chair equipment, furniture springs	590	450	140	
Hydro Plastics, Inc. (1958)	Typewriter parts, custom molded plastic parts	38	15	23	
Interstate Transformer Company (1982)	Transformers	75	--	--	
Johnson Controls, Inc. (1969)	Environmental controls	429	164	265	Sheet Metal Workers*
Kentucky Heat Treating Company (1967)	Heat and sub zero treating metal parts, wheelabrator-tumbling of parts	30	28	2	Sheet Metal Workers*
Nally and Gibson (1959)	Ready mixed concrete, crushed limestone	24	24	0	



<u>Firm</u> (Establishment date)	<u>Product</u>	<u>Employment</u>			<u>Labor Unions</u>
		<u>Total</u>	<u>Male</u>	<u>Female</u>	
Pioneer Manufacturing Company (1977)	Typewriter parts, auto fittings	19	4	15	
Preferred Stampings, Inc. (1963)	Metal stampings, machine shop	40	15	25	
R & J Manufacturing, Inc. (1976)	Dowels, chair and ladder rungs wood, hickory chips and chunks, threaded broom handles	22	19	3	
Refractory Technologies, Inc. (1982)	Industrial furnace linings, ceramic fiber, steel wall and door panels for industrial furnaces	4	--	--	
Russell Manufacturing, Division of Hydro Plastics, Inc. (1952)	Advertising specialties	30	2	28	
STM, Inc. (1971)	Special machines, tools, dies, jigs, fixtures, tool design	9	7	2	
Southern States Georgetown Cooperative (1970)	Fertilizer	19	16	3	
Stamping Ground Tool and Die (1968)	Tools and dies molds, stampings, machine shop	115	110	5	

<u>Firm (Establishment date)</u>	<u>Product</u>	<u>Employment</u>			<u>Labor Unions</u>
		<u>Total</u>	<u>Male</u>	<u>Female</u>	
Stiohn Products (1962)	Machine shop	10	--	--	
Willmott Walnut Company, Inc. (1975)	Walnut gun stocks, walnut furniture squares, veneer logs	10	9	1	

\*See Labor Organizations below.

Source: Kentucky Department of Economic Development, Division of Research and Planning.

#### LABOR ORGANIZATIONS IN MANUFACTURING FIRMS

<u>Union</u>	<u>Representing workers at:</u>
Sheet Metal Workers' International Association	Johnson Controls, Inc. Kentucky Heat Treating Company

#### INDUSTRIAL SERVICES

<u>Types of Services</u>	<u>Location</u>	<u>Mileage from Georgetown</u>
Tool & Die, Machine & Pattern Shops	Georgetown	--
Metal Service Centers	Lexington	16
Heat Treating	Georgetown	--
Metal Finishers	Lexington	16
Electric Motor Repair	Lexington	16

Source: Kentucky Department of Economic Development, Kentucky Directory of Selected Industrial Services, 1981.



ESTIMATED MALE LABOR SUPPLY  
GEORGETOWN LABOR MARKET AREA

Area	Current			Future	
	Total	Not in Labor Force	Unemployed	Under-employed	Reaching 18 years of age before 1986
Labor Market Area*	12,930	907	5,326	6,697	13,482
Scott	841	0	392	449	839
Bourbon	628	0	346	282	893
Fayette	7,197	0	2,895	4,302	8,091
Franklin	1,429	0	746	683	1,515
Grant	912	446	269	197	455
Harrison	492	0	301	191	620
Owen	792	461	143	188	326
Woodford	639	0	234	405	743

\*Additional workers may be drawn from other nearby counties.

Note: Unemployed - persons unemployed and actively seeking work;

Underemployed - persons employed but working only 14 to 26 weeks per year;

Not in Labor Force - represents the number of persons who would enter the labor force if suitable employment were available (based on the assumption that persons in Kentucky would like to participate in the labor force in the same proportion that they do nationally).

Sources: Kentucky Cabinet for Human Resources, Kentucky Labor Supply Estimates by County, 1980. Kentucky Department of Economic Development, Future Labor Supply before 1986.

ESTIMATED FEMALE LABOR SUPPLY  
GEORGETOWN LABOR MARKET AREA

Area	Current			Future	
	Total	Not in Labor Force	Unemployed	Under- employed	Reaching 18 years of age before 1986
Labor Market					
Area*	11,601	472	3,089	8,040	12,852
Scott	776	0	204	572	818
Bourbon	623	0	212	411	840
Fayette	6,920	0	1,775	5,145	7,563
Franklin	1,262	0	387	875	1,502
Grant	612	255	135	222	489
Harrison	491	0	184	307	607
Owen	420	217	71	132	284
Woodford	497	0	121	376	749

\*Additional workers may be drawn from other nearby counties.

Note: Unemployed - persons unemployed and actively seeking work;

Underemployed - persons employed but working only 14 to 26 weeks per year;

Not in Labor Force - represents the number of persons who would enter the labor force if suitable employment were available (based on the assumption that persons in Kentucky would like to participate in the labor force in the same proportion that they do nationally).

Sources: Kentucky Cabinet for Human Resources, Kentucky Labor Supply Estimates by County, 1980. Kentucky Department of Economic Development, Future Labor Supply before 1986.



AVERAGE WEEKLY WAGES BY INDUSTRY,  
BY PLACE OF WORK, 1981

	<u>Scott County</u>	<u>Bourbon County</u>	<u>Fayette County</u>	<u>Franklin County</u>
All Industries	\$232.72	\$218.93	\$282.74	\$263.59
Mining & Quarrying	*	*	529.79	252.04
Contract Construction	242.11	271.06	340.51	353.76
Manufacturing	291.32	232.54	401.73	284.73
Transportation, Communications & Public Utilities	402.15	320.23	351.28	364.06
Wholesale & Retail Trade	155.03	192.45	199.44	165.43
Finance, Insurance & Real Estate	227.40	267.42	273.23	279.83
Services	168.78	157.75	242.34	200.51
State/Local Government	194.21	231.69	290.61	279.53
Other	240.29	212.99	244.71	193.82
	<u>Grant County</u>	<u>Harrison County</u>	<u>Owen County</u>	<u>Woodford County</u>
All Industries	\$203.02	\$242.89	\$216.08	\$258.17
Mining & Quarrying	0	*	0	0
Contract Construction	172.84	241.14	*	270.42
Manufacturing	276.91	310.88	*	311.93
Transportation, Communications & Public Utilities	332.26	293.57	*	336.35
Wholesale & Retail Trade	152.59	152.59	167.78	157.92
Finance, Insurance & Real Estate	196.14	227.59	207.15	199.49
Services	131.11	165.93	145.24	185.25
State/Local Government	218.39	222.33	195.07	234.39
Other	*	188.92	0	241.93

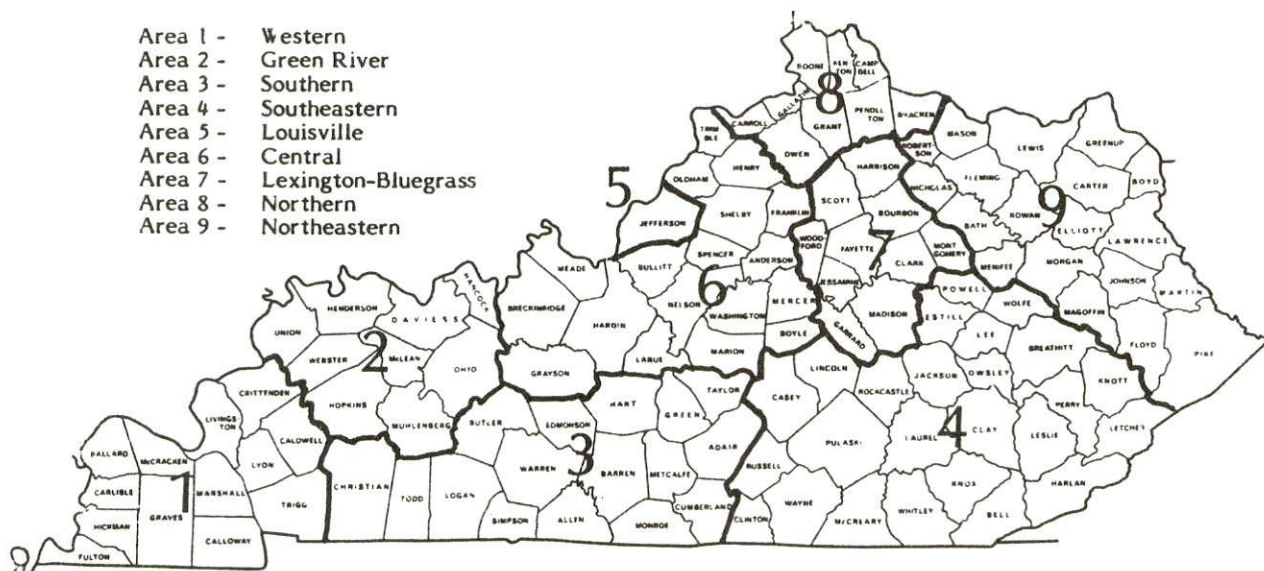
\*Not disclosed.

Note: Excludes domestic workers, railway workers, certain nonprofit corporations, majority of federal government workers, and self-employed workers.

Source: Kentucky Cabinet for Human Resources, Average Weekly Wages of Workers Covered by Kentucky Unemployment Insurance Law, 1981.

Occupational wage rates for specific industries are usually not available to most government agencies, and wage data furnished to state employment agencies by individual industrial employers are protected from disclosure by federal law. The most reliable up-to-date wage information can be obtained by direct contact with local employers.

Associated Industries of Kentucky, a voluntary organization of Kentucky businesses, regularly collects occupational wage rates and fringe benefits data from participating member firms. Data are compiled for over 127 clearly defined office, production, and service occupations. Tabulations are published for nine geographical areas of Kentucky, as shown on the map below. It should be noted that the data may be weighted by the preponderance of firms in the larger cities and may be somewhat higher than the rates paid in the smaller communities. Data from these tabulations are available, upon request, from the Kentucky Department of Economic Development, Frankfort, Kentucky 40601.



Associated Industries of Kentucky Area Wage Surveys



PER CAPITA PERSONAL INCOME

<u>Area</u>	<u>1976</u>	<u>1980</u>	<u>Percent Change</u>
Scott County	\$ 5,302	\$ 7,774	46.6
Labor Market Area Range	\$4,369 - 6,463	\$5,878 - 10,508	N/A
Kentucky	5,263	7,662	45.6
U.S.	6,367	9,511	49.4

Source: U.S. Bureau of Economic Analysis, Kentucky Economic Information System, June 1982.

## TRANSPORTATION

### Rail

Line serving Georgetown - Southern Railway System

Services - Main line; one northbound and one southbound freight stop six days per week; 12 northbound and 12 southbound through freights daily; switching facilities; team track space for four cars; nearest Southern Railway piggyback facilities at Danville, 51 miles southwest of Georgetown

For details on routing, schedules, rates, and services, contact:

District Sales Manager  
Southern Railway System  
701 South Broadway  
Lexington, Kentucky 40508  
(606) 252-2242

### Highways

Georgetown is served by U.S. Highways 25, 62 and 460. An interchange onto Interstate 75, a major north-south interstate, is located two miles east of Georgetown. Access to Interstate 64, a major east-west interstate, is nine miles south of Georgetown via Interstate 75.

### Truck Service

<u>Company</u>	<u>Home Office</u>
American Freight Systems, Inc.*	9393 West 110th Street Overland Park, Kansas 66210
Associated Truck Lines, Inc.*	200 Monroe Avenue, N.W. Grand Rapids, Michigan 49503
Bestway Express, Inc.**	520 Lester Avenue Nashville, Tennessee 37210
Bishop Motor Express**	Grand Rapids, Michigan 49502
Branch Motor Express Company**	114 Fifth Avenue New York, New York 10011
Budig Western**	1100 Gest Street Cincinnati, Ohio 45203
CCC Highway, Inc.**	1375 Euclid Avenue, Room 201 Cleveland, Ohio 44115
C W Transport, Inc.**	610 High Street Wisconsin Rapids, Wisconsin 54494



<u>Company</u>	<u>Home Office</u>
Claxon Truck Line, Inc.**	453 Versailles Road P. O. Box 678 Frankfort, Kentucky 40602
Commercial Lovelace Motor Freight, Inc.**	3400 Refugee Road Columbus, Ohio 43227
Commercial Motor Freight Inc. of Indiana*	2141 South High School Road Indianapolis, Indiana 46241
Consolidated Freightways Corporation of Delaware**	175 Linfield Drive Menlo Park, California 94025
Craig's Express**	U.S. Highway 27 Falmouth, Kentucky 41040
Duff Truck Line, Inc.**	Broadway and Vine Streets P. O. Box 359 Lima, Ohio 45802
General Highway Express, Inc.*	2280 Industrial Drive P. O. Box 727 Sidney, Ohio 45365
Helms Express**	Irwin, Pennsylvania 15642
Interstate System*	110 Ionia N.W. Grand Rapids, Michigan 49503
Lawrenceburg Transfer Company, Inc.**	U.S. Highway 127 P. O. Box 220 Lawrenceburg, Kentucky 40342
The Mason and Dixon Lines, Inc.**	P. O. Box 969 Kingsport, Tennessee 37662
McLean Trucking Company*	P. O. Box 213 Winston-Salem, North Carolina 27154
Mercury Motor Express, Inc.**	2511 North Grady Avenue Tampa, Florida 33607
Middlewest Freightways, Inc.**	6810 Prescott Avenue St. Louis, Missouri 63147
O. K. Trucking Company**	3000 East Crescentville Road Cincinnati, Ohio 45241
Overnite Transportation Company**	1000 Semmes Avenue P. O. Box 1216 Richmond, Virginia 23209
P-I-E**	25 North Via Monte Walnut Creek, California 94598

CompanyHome Office

Quick Transportation, Inc.\*\*

P. O. Box 12248

Lexington, Kentucky 40582

Roadway Express, Inc.\*\*

1077 Gorge Boulevard

Akron, Ohio 44309

Ryder Truck Lines, Inc.\*\*

2050 Kings Road

P. O. Box 2408

Jacksonville, Florida 32203

Smith's Transfer  
Corporation\*

P. O. Box 1000

Staunton, Virginia 24401

Transcon Lines\*\*

101 Continental Boulevard

El Segundo, California 90245

Other Freight ServicesNearest Shipping CenterPurolator Courier  
Corporation\*\*\*

Lexington, 16 miles distant

United Parcel Service\*\*\*\*

Lexington, 16 miles distant

Federal Express\*\*\*\*\*

Lexington, 16 miles distant

---

\* Interstate service only.

\*\* Interstate and intrastate service.

\*\*\* For regular scheduled pickups or for occasional pickups, arrangements must be made with the Lexington, Kentucky, office of Purolator Courier Corporation.

\*\*\*\* For regular scheduled pickups or for occasional pickups, arrangements must be made with the Louisville, Kentucky, office of United Parcel Service.

\*\*\*\*\* For information on scheduling, rates, and services, contact the Federal Express shipping station at Lexington, Kentucky, or call the home office in Memphis, Tennessee, Toll-Free at 800-238-5355 (in Tennessee, call 800-542-5171).



HIGHWAY MILES AND TRUCK TRANSIT TIME IN DAYS FROM  
GEORGETOWN, KENTUCKY, TO SELECTED MARKET CENTERS

City	Highway Miles	Delivery Time TL	City	Highway Miles	Delivery Time TL
Atlanta, Ga.	398	2	Los Angeles, Ca.	2,196	8-10
Baltimore, Md.	568	3	Louisville, Ky.	72	1
Birmingham, Ala.	394	2	Nashville, Tenn.	198	1
Chicago, Ill.	358	2	New Orleans, La.	743	3
Cincinnati, Ohio	71	1	New York, N. Y.	719	3
Cleveland, Ohio	301	2	Pittsburgh, Pa.	359	3
Detroit, Mich.	330	2-3	St. Louis, Mo.	335	2
Knoxville, Tenn.	182	1			

Note: Mileage computations are via the best interstate or primary highways, not necessarily the most direct route of travel.

Sources: Rand McNally Interstate Atlas, 1981. Official Kentucky Mileage Map, 1979. Delivery time - Quick Transportation, P. O. Box 12248, Lexington, Kentucky 40582.

Air

Local

Location: Marshall Field  
 Runways: 1 mile south of Georgetown  
 Length: 1 turf  
 Traffic: 2,000 feet  
 Control: Wind sock  
 Lighting: None  
 Services: 80 and 100 octane, tie-downs, and flight instruction

(Contd.)

### Nearest Scheduled Airline Service

Location:	Blue Grass Field 4.5 miles west of Lexington, Kentucky; 20 miles south of Georgetown
Runways:	2 paved
Length:	6,500 feet; 3,500 feet
Traffic	
Control:	Tower
Lighting:	Approach lighting system, beacon, runways and obstructions lighted, VASI
Services:	USAir, Delta, Piedmont, Frontier, Comair, Tennessee Airways; fuel - 80, 100LL, jet-A; hangars, tie-downs; major A & P repairs, major Avionics repairs; APU, charter, flight instruction, oxygen, plane rentals, survival equipment; taxi, limousine, car rentals, courtesy car; weather information; restaurant, snack bar
Air Freight	
Service:	Air freight terminal

Bus - Southern Greyhound stops at Georgetown twice daily.

Taxi - One radio-dispatched line.

Rental Services - Car, truck and trailer rentals are available.

### Water

The Kentucky River is the nearest navigable river. Georgetown is located approximately 18 miles east of a point on the Kentucky River where a 6-foot navigation channel is maintained.

## POWER AND FUEL

### Electricity

Company serving Georgetown and part of Scott County - Kentucky Utilities Company

Source of power - Kentucky Utilities Company

Total generating capacity - 2,639,100 KW\*

For industrial rates contact:

Industrial Development Department  
Kentucky Utilities Company  
One Quality Street  
Lexington, Kentucky 40507  
(606) 255-1461

Companies serving parts of Scott County - Harrison Rural Electric Cooperative Corporation and Owen County Rural Electric Cooperative Corporation

Source of power - East Kentucky Power Cooperative

Total generating capacity - 1,304,000 KW

For industrial rates contact:

Industrial Development Division  
East Kentucky Power Cooperative  
P. O. Box 707  
Winchester, Kentucky 40391  
(606) 744-4812

and/or

Harrison RECC  
P. O. Box 130  
Cynthiana, Kentucky 41031  
(606) 234-3131

and/or

Owen County RECC  
510 Georgetown Road  
Owenton, Kentucky 40359  
(502) 484-3471

---

\* A new generating unit is under construction in Carroll County. Due to be completed in 1984, the unit will have a generating capacity of 511,000 KW.



### Natural Gas

Company serving Georgetown - Columbia Gas of Kentucky, Inc.  
Source of supply - Columbia Gas Transmission Corporation  
Size of transmission mains - 12-inch (supplier); 6- and 8-inch (distributor)  
Distribution mains - 2- to 6-inch  
Distribution pressure - 4 ounces to 15 psig  
Btu content - 1,027 per cubic foot  
Specific gravity - 0.60  
For rates and supplies contact:

District Gas Utilization Manager  
Columbia Gas of Kentucky, Inc.  
P. O. Box 241  
Lexington, Kentucky 40584  
(606) 255-3612

### Other Fuels (Within 16 miles)

#### Propane

Buckeye Gas Products Company  
(bulk plant)  
Spurr Road  
Lexington, Kentucky 40511

Crawford Gas & Appliances, Inc.  
1104 Winchester Road  
Lexington, Kentucky 40505

John B. Penn & Company  
Maddox Street  
Georgetown, Kentucky 40324

Fuel oils

Distillate fuel oil -

Ashland Petroleum Company  
Old Frankfort Pike  
Lexington, Kentucky 40504

Chevron U.S.A., Inc.  
1750 Old Frankfort Pike  
Lexington, Kentucky 40504

Exxon Company, U.S.A.  
1506 Old Frankfort Pike  
Lexington, Kentucky 40504

Doc Ferrell Gulf Distributor, Inc.  
1102 West Manchester  
Lexington, Kentucky 40508

H & R Oil Company, Inc.  
Georgetown Road  
Lexington, Kentucky 40502

Hamilton Oil Company  
Paris Pike  
Georgetown, Kentucky 40324

Mitchell Petroleum Products  
Cynthiana Road  
Georgetown, Kentucky 40324

Moore Oil Company  
Old Frankfort Pike  
Lexington, Kentucky 40504

Residual fuel oil - Arrangements must be made with the refinery.

Low sulphur content coal - Available in Kentucky.

## WATER AND SEWERAGE

### Public Water Supply

Company serving Georgetown - Georgetown Municipal Water and Sewer Service  
214 West Main Street  
Georgetown, Kentucky 40324  
(502) 863-1156

Source - Royal Spring and three impoundments on North Elkhorn Creek  
Treatment plant capacity - 4,000,000 gallons per day  
Average daily consumption - 1,700,000 gallons  
Peak daily consumption - 2,100,000 gallons  
Type treatment - Coagulated, settled, filtered, chlorinated, fluoridated  
Storage capacity - 1,500,000 gallons  
Size lines - 1 to 16 inches  
Average pressure - 80 psi  
Average temperature - 60 degrees F.

### MONTHLY WATER RATES

#### Inside City

First	300 cubic feet	\$3.72 (Minimum)
Next	300 cubic feet	1.33 per 100 cubic feet
Next	1,000 cubic feet	1.01 per 100 cubic feet
Next	2,400 cubic feet	.91 per 100 cubic feet
All over	4,000 cubic feet	.75 per 100 cubic feet

#### Outside City

First	2,000 gallons	\$3.32 (Minimum)
Next	2,000 gallons	1.78 per M gallons
Next	8,000 gallons	1.44 per M gallons
Next	18,000 gallons	1.22 per M gallons
All over	30,000 gallons	1.00 per M gallons

Tap-on charge:

Inside city - \$225 - Residential  
Outside City - \$300 - Residential  
Commercial and Industrial - By application



Company serving eastern Scott County - Kentucky-American Water Company  
2300 Richmond Road  
P. O. Box 7500  
Lexington, Kentucky 40502  
(606) 269-2386

Source - Kentucky River and Reservoir #4 (fed from Hickman Creek)

Treatment plant capacity - 60,000,000 gallons per day

Average daily consumption - 32,000,000 gallons

Peak daily consumption - 48,010,000 gallons

Type treatment -Coagulation, sedimentation, filtration

Storage capacity for Scott County - 840,000 gallons

Size lines - 6, 8 and 12 inches

Average pressure - Pumped at 80psi

Average temperature - 60 degrees F.

MONTHLY AND QUARTERLY WATER RATES FOR RESIDENTIAL,  
COMMERCIAL, AND INDUSTRIAL CONSUMERS

	Cubic Feet Per		Rate per 100 Cubic Feet
	Month	Quarter	
For the first	5,000	15,000	\$1.18137
For the next	30,000	90,000	.85559
For the next	300,000	900,000	.49720
For all over	335,000	1,005,000	.32834

MINIMUM CHARGES

All metered general water service customers shall pay a minimum charge based on the size of meter installed. Such minimum charge will entitle the customer to as much water as the charge will pay for at the scheduled meter rates. Water used in excess of such amount will be billed at the meter rate schedule.

Size of Meter	Minimum Charge Per	
	Month	Quarter
5/8-inch	\$ 3.51	\$ 10.53
3/4-inch	5.27	15.81
1-inch	8.74	26.22
1 1/2-inch	17.58	52.74
2-inch	28.12	84.36
3-inch	60.79	182.37
4-inch	92.78	278.34
6-inch	195.22	585.66

Tap-on charge: None

Raw Water

Surface water sources - North Elkhorn Creek

Average discharge - North Elkhorn Creek near Georgetown - 168 cfs (31-year record, USGS)

Expected ground water yield - 5 to 50 gpm in southern half and two small northern sections of Scott County; 50 to 200 gpm in central area of county; 5 gpm or less throughout remainder of county

## Sewerage

Company serving Georgetown - Georgetown Municipal Water and Sewer Service\*

214 West Main Street  
Georgetown, Kentucky 40324  
(502) 863-1156

Design capacity - 3,000,000 gallons per day

Average daily flow - 1,200,000 gallons

Treatment - Primary and secondary

Type treatment - Hydroseive screens, rotating biological contractors, drying beds, secondary clarifier, anaerobic and aerobic digesters, chlorination

Treated effluent discharged into - North Elkhorn Creek

Size of sanitary mains - 6 to 18 inches

Size of storm mains - 24 to 36 inches

Rates - \$1.81 per 100 feet of water usage

Tap-on charge: Residential - \$225

Commercial & Industrial - By application

---

\* Construction began in May 1982 on a project to add tertiary treatment and 3.5 miles of new interceptor lines ranging up to 30 inches to the sewer system. Completion of the project is scheduled for late 1983.



## CLIMATE

### Scott County

#### Temperature

Normal (30-year record)	55.20 degrees
Average annual 1981	54.20 degrees
Record highest, September 1954 (37-year record)	103.00 degrees
Record lowest, January 1963 (37-year record)	-21.00 degrees
Normal heating degree days (30-year record)	4,729
(Heating degree day totals are the sums of negative departures of average daily temperatures from 65 degrees F.)	

#### Precipitation

Normal (30-year record)	44.49 inches
Mean annual snowfall (37-year record)	16.70 inches
Total precipitation 1981	36.65 inches
Mean number days precipitation (.01 inch or more) (37-year record)	130
Mean number days thunderstorms (37-year record)	46

#### Prevailing Winds (17-year record)

South

#### Relative Humidity

1 a.m.	77 percent (17-year record)
7 a.m.	81 percent (18-year record)
1 p.m.	60 percent (18-year record)
7 p.m.	64 percent (18-year record)

Source: U.S. Department of Commerce, Environmental Science Services Administration, Climatological Data, 1981. Station of record: Lexington, Kentucky.

## LOCAL GOVERNMENT

### City

Structure - Mayor - 4-year term; 8 council members - 2-year terms

Budget 1982 - General Fund \$1,160,911

Water and Sewer Fund 887,500

Fees and licenses - Occupational license taxes - one percent of all salaries, wages, commissions and other compensation earned by every person in the city for work done or service performed or rendered in the city; and one percent of net profits of all businesses, professions or other activities conducted in the city

### County

Structure - County Judge/Executive - 4-year term; 3 commissioners - 4-year terms

Budget 1981-82 - General Fund \$713,786; Road Fund \$257,000

### Assessed Value of Property, 1981\*

<u>Classes of Property</u>	<u>Georgetown</u>	<u>Scott County</u>
Real Estate	\$91,906,639	\$234,811,225
Tangibles	18,661,711	38,524,465

\*Excludes Homestead Exemptions.

## Property Taxes

All property in Kentucky is assessed at 100 percent of fair cash value.

Land and buildings are taxed by the state and may be taxed by local jurisdictions. The state rate is \$0.229 per \$100 of assessed valuation.

Manufacturing machinery, raw materials inventories, pollution control equipment, and goods in the process of manufacture are not subject to local taxation. The state rate is \$0.15 per \$100.

Other tangible personal property owned by manufacturers (automobiles, trucks, finished goods, office furniture, office equipment) is taxed by the state at \$0.45 per \$100 and may be taxed by local jurisdictions.

Property stored in public warehouses in a transit status is not subject to local taxation. The state rate is only \$0.015 per \$100.

Intangible personal property located in Kentucky (money in hand, shares of stock, notes, bonds, accounts receivable, and other credits) is taxed by the state at \$0.25 per \$100, and is not subject to local taxation.

Private leaseholds in industrial facilities owned by cities or counties and financed by industrial revenue bonds are subject to a state tax of \$0.015 per \$100 of value (essentially the lessee's equity, adjusted for appreciation or depreciation). Local taxation is not permitted.

### Combined State and Local Rates Per \$100 Valuation, 1981\* (100% assessment)

	<u>Inside City of Georgetown</u>	<u>Site Inside Unincorporated Scott County</u>
1. Land and buildings	\$1.050	\$0.735
2. Mfg. machinery, raw materials, goods in process, pollution control equipment	0.150	0.150
3. Finished goods, office equipment, vehicles, other tangibles	1.271	0.956
4. Intangibles (accounts receivable, notes, bonds, etc.)	0.250	0.250
5. Leaseholds in industrial revenue bond financed plants	0.015	0.015

\*Kentucky Department of Economic Development.



### Utilities Gross Receipts Tax for Schools

A 3 percent tax is levied on utilities receipts for schools in Scott County. Tax is paid by all consumers of utilities as an add-on to the utilities bills. Exempted are receipts from utilities services that are resold and the receipts from the sale of energy or energy producing fuels that exceed 3 percent of the cost of production in manufacturing, processing, mining or refining.

### Occupational License Tax for Schools

Scott County levies a one-half of one percent occupational license tax on wages, salaries, and commissions of individuals and on net profits of businesses. Exempted are nonresidents and certain businesses including public service companies that pay ad valorem taxes, insurance companies, banks, and trust companies.

### Planning and Zoning

Joint agency - Georgetown-Scott County Planning and Zoning Commission\*

Zoning enforced - In all areas

Subdivision regulations enforced - In all areas

Local codes enforced - Building and housing

Mandatory state codes enforced - Kentucky Plumbing Code, National Electric Code, Kentucky Boiler Regulations and Standards, Kentucky Building Code (modeled after BOCA code)

### Safety

<u>Police</u>	<u>Georgetown</u>	<u>Sheriff</u>	<u>Scott County</u>
Total staff	21 full-time 4 part-time	9 full-time 4 part-time	3
Radio-patrol cars	16	3	3

### Fire

#### Insurance Services

Organization

Public Protection

Classification

7	--	10
23	--	20 approximately

\* Includes Scott County and the cities of Georgetown, Stamping Ground and Sadieville.

## Refuse Collection and Disposal

	<u>Georgetown</u>
Type service	Municipal
Fee charged:	
residential	\$4 per month
business	\$60 to \$100 per month
industrial	\$25 to \$150 per month
Collection frequency:	
residential	Weekly
business	Based on volume
industrial	Based on volume
Trash pickup	Weekly
Disposal method	Landfill

Refuse collection in Scott County is by arrangement with private contractors.

## EDUCATION

### Public Schools

#### Scott County

Total Enrollment (June 1982)	3,958*
Elementary	1,917
Middle School	1,006
High School	1,035
Student-Teacher Ratio	18-1
Elementary	17-1
Middle School	18-1
High School	18-1
Percent High School Graduates to College (1981)	42.9
Expenditures Per Pupil (1980-81)	\$ 1,309.95
Bonded Indebtedness (June 30, 1981)	\$4,541,000**

\* Includes kindergarten.

\*\* Includes refunding issue of \$1,710,000.



### Area Colleges and Universities

<u>Name</u>	<u>Location (Miles distant)</u>	<u>Enrollment (Fall, 1981)</u>	<u>Highest Degree Conferred</u>
Georgetown College	Georgetown	1,263	Masters
Midway College	Midway (14)	338	Associate
Transylvania University	Lexington (16)	750	Baccalaureate/ Masters*
University of Kentucky	Lexington (16)	23,441	Doctorate, M.D., D.M.D., J.D.
Lexington Technical Institute	Lexington (16)	2,302	Associate
Kentucky State University	Frankfort (18)	2,385	Masters
Asbury College	Wilmore (34)	1,200	Baccalaureate
Eastern Kentucky University	Richmond (39)	13,394	Masters, Specialist/ Doctorate**
Centre College	Danville (51)	685	Baccalaureate
Berea College	Berea (53)	1,587	Baccalaureate

Georgetown College is a coeducational liberal arts college and is historically related to the Kentucky Baptist Convention. The college is accredited by the Southern Association of Colleges and Schools and is approved by the Kentucky Department of Education for the certification of teachers. Georgetown College confers the degrees: Bachelor of Arts, Bachelor of Science, Bachelor of Science in Medical Technology, Bachelor of Music Education, and Master of Arts in Education.

\* Courses in the masters degree program are taught on the Transylvania campus by faculty members of Xavier University of Cincinnati. The degree is issued by Xavier University.

\*\* Joint doctoral degree programs are offered in cooperation with the University of Kentucky, Lexington, and cooperative doctoral degree programs are offered with Michigan State University and the University of Maryland.

## Vocational Schools

Both the state vocational-technical schools and the area vocational education centers are operated by the Kentucky Department of Education. The state vocational-technical schools enroll persons full time who are at least 16 years of age and not in school. These students attend classes for six hours each day. The area vocational education centers are designed to accommodate high school students who are at least 15 years of age. These students attend vocational school for three hours each day. The state vocational-technical schools and the area education centers offer evening courses to enable working adults to upgrade current job skills.

### Nearest State School

Location	Central Kentucky State Vocational- Technical School
Miles Distant	Lexington 16
Curriculum	Business and Office Clerical Secretarial Consumer and Home Economics Commercial Foods Health and Personal Services Occupations Cosmetology Dental Assistant Nurse's Aide Practical Nursing Surgical Technician Industrial Education Auto Body Repair Auto Mechanics Carpentry Drafting Electronics Graphic Arts Industrial Electricity Machine Shop Masonry Sheet Metal, Heating and Cooling Welding Learning Resource Center

### Nearest Area Education Centers

Location	Northside Area Vocational Education Center
Miles Distant	Lexington
Curriculum	16
	Agriculture
	Horticulture
	Health and Personal Services Occupations
	Health Careers
	Industrial Education
	Auto Mechanics
	Auto Parts
	Construction Electricity
	Diesel Mechanics
	Graphic Arts
	Industrial Equipment Mechanics
	Machine Shop
	Welding

Location	Southside Area Vocational Education Center
Miles Distant	Lexington
Curriculum	16
	Health and Personal Services Occupations
	Health Careers
	Industrial Education
	Air Conditioning and Refrigeration
	Auto Body Repair
	Auto Mechanics
	Carpentry
	Electricity
	Electronic Service
	Masonry
	Plumbing

Arrangements can be made to provide training in the specific production skills required by an industrial plant. Instruction may be conducted either in the vocational school or in the industrial plant, depending upon the desired arrangement and the availability of special equipment.



### Lexington Technical Institute

The Lexington Technical Institute is a unit of Kentucky's community college system operating on the University of Kentucky campus. Courses parallel university offerings and are transferable to the Lexington U of K campus or to another 4-year institution either public or private. The Institute awards the Associate in Arts degree and the Associate in Applied Science degree.

The Associate in Applied Science Degree is awarded in the following programs: Accounting Technology; Architectural Technology; Civil Engineering Technology; Data Processing Technology (Business Option, Science Option); Dental Hygiene; Dental Laboratory Technology; Electrical Engineering Technology (Electronics Option); Management Technology (Business Option); Mechanical Engineering Technology; Nursing; Radiologic Technology; Real Estate; Respiratory Therapy; Secretarial Administration; Transportation.

## HEALTH

### Local Medical Personnel

Physicians - 13  
Dentists - 8

### Hospitals\*

<u>General Hospital</u>	<u>Location</u>	<u>Beds</u>
John Graves Ford Memorial Hospital	Georgetown	45

General hospital facilities - Laboratory, EKG, blood bank, microbiology, diagnostic X-ray, diagnostic ultra sound, nuclear medicine, respiratory therapy, physical therapy, pharmacy, emergency room, general surgery, orthopedic surgery, gynecological surgery, urological surgery, ophthalmic surgery, labor and delivery rooms, birthing rooms, newborn nursery, intensive care/coronary care unit, pediatrics

Medical staff - 27 physicians, 3 dentists, 20 registered nurses, 10 licensed practical nurses

### Other Medical Facilities

Scott County Comprehensive Care Center  
Staff - One doctor (part-time), one registered nurse, one psychologist, two social workers, one alcohol and drugs rehabilitation counselor

### Ambulance Service

Name - Georgetown-Scott County Ambulance Service  
Staff - Four full-time, six volunteers (10 staff members are emergency medical technicians)  
Service - County-wide; 24 hours a day  
Equipment - Three fully equipped ambulances

---

\* The Hospital Corporation of America will begin construction of a new 75-bed hospital in Georgetown during the fall of 1982. The construction is scheduled for completion in late 1983 at a projected cost of \$13 million. The John Graves Ford Memorial Hospital will close when the new hospital begins operation.

## Public Health

Facility - Scott County Health Department\*

Staff - Three registered nurses, two health environmentalists (1 full time, 1 part time), family planning unit, two clerks, one EPS clerk, two clerk-aides, one nutritionist (part time)

---

\* The Scott County Health Department is part of the WEDCO District Health Department which also includes Bourbon, Clark, Harrison and Nicholas Counties.



## OTHER LOCAL FACILITIES

### Communications

Telephone - Services -	South Central Bell Telephone Company Standard
Telegraph - Services -	Western Union Counter service Monday through Friday 8 a.m. to 5 p.m.; Toll-free telephone number, 1-800-325-5100
Postal - Class - Mail received - Mail dispatched -	U.S. Post Office First Once daily Once daily
Newspapers - Weekly and circulation - Weekly and circulation - Other papers received from -	Georgetown News and Times - 4,700 The Graphic - 2,600 Lexington and Louisville, Kentucky
Radio - Stations received from -	WAXU AM/FM; WRVG-FM (Georgetown College) Lexington, Louisville, Paris, Cynthiana, Nicholasville, Winchester, Richmond, Frankfort and Versailles, Kentucky
Television - Cable service Reception from - Kentucky Educational Television -	Lexington and Louisville, Kentucky; Cincinnati, Ohio Lexington-Richmond transmitter - Channel 46 Owenton transmitter - Channel 52

## Library Services

Public library - Scott County Public Library, Georgetown

Size collection - 49,145 volumes

Circulation, 1981-82 - 89,879

Services - Children's hour, films, records, pictures, magazines, pamphlets, telephone reference, Xerox and copying service, microfilm reader, projector and screens loaned, community meeting room, interlibrary loan, bookmobile, reading readiness program, program for day care children, adult programs, genealogy

College library - Cooke Memorial Library, Georgetown College

Size collection - Approximately 100,000

Special collections - Rare bibles, George M. Spears' collection of Kentucky fiction

Services - Over 600 periodicals and newspapers, films, tapes, selected recordings, microfilm, microfilm reader-printer, copy machine, New York Times on microfilm from 1956 to present, Courier-Journal on microfilm since 1970, business services including Standard and Poor's Corporation Records and Standard and Poor's Register, News bank

## Religious Institutions

### Scott County

Number of churches - 66

Denominations - Approximately 16 denominations are represented including:

Apostolic Pentecostal

Baptist

Catholic

Christian

Church of Christ

Church of God

Episcopal

Nazarene

Presbyterian

Salvation Army

United Methodist

Nearest synagogues - Lexington, Kentucky, 16 miles south of Georgetown

Congregations - Adath Israel (reform)

Ohavey Zion (traditional)

### Financial Institutions

<u>Banks</u>	<u>Assets</u>	<u>Deposits</u>	<u>Statement Date</u>
Farmers Bank and Trust Company	\$43,600,858.00	\$38,353,425.00	6/30/82
First National Bank and Trust Company	51,902,183.90	46,358,575.46	6/30/82
<u>Savings and Loan Associations</u>	<u>Assets</u>	<u>Savings Accounts</u>	<u>Statement Date</u>
First Federal Savings and Loan Association	\$86,185,943.92	\$75,368,902.25	12/31/81

### Hotels and Motels

Total number - 6  
Total rooms - 438

### Clubs and Orgnaizations

American Association of University Women	Georgetown Lioness Club
American Cancer Society-Scott County Chapter	Georgetown-Scott County Human Rights Commission
American Legion	Girl Scouts
American Legion Auxiliary	Historical Society
Arthritis Foundation	Homemakers Club
Bar Association	Jaycees
Big Brother and Big Sisters	Jaycettes
Bluegrass Community Action Agency	John Graves Ford Memorial Hospital Auxiliary
Bluegrass Coon Hunters Club	Kentucky Retail Federation
Board of Realtors	Kiwanis
Boy Scouts	Lions Club
Business and Professional Women's Club	Little Garden Club
Chamber of Commerce	Little League baseball
Cub Scouts	Little League basketball
Eastern Star	Little League football
Farm Bureau	Masons
4-H Council	Ministerial Association
Friends of the Scott County Library	Optimist
Future Farmers of America	Red Cross
Future Homemakers of America	Rotary
Georgetown Book Club	Royal Spring Shrine Club
	Ruritan
	Saddle Blanket Riding Club



St. John's Catholic Woman's  
Service  
Scott County Band Boosters  
Scott County Christian Singles  
Club  
Scott County Humane Society  
Scott County Medical Association  
Scott County Retired Teachers  
Association  
Senior Citizens Club  
Swinging Scott Square Dance Club

Veterans of Foreign Wars  
Veterans of Foreign Wars Ladies  
Auxiliary  
Weight Watchers  
Welcome Wagon  
Woman's Association of Georgetown  
College  
Woman's Clubs  
Women's Christian Temperance Union

## RECREATION

### Local

The Georgetown-Scott County Park and Recreation Board sponsors a full-time supervised recreation program in the summer, which it hopes to extend throughout the year. There are programs in swimming, baseball, softball, tennis, football, soccer, basketball, volleyball, and playground activities for children.

Georgetown provides a variety of public recreation facilities. Facilities at the 12-acre Suffoletta Park include a swimming pool, tennis courts, basketball and volleyball courts, baseball fields, horseshoe pitching complex, picnic pavillion, picnic tables and modern playground equipment. The Ed Davis Playground features new playground equipment, a recreation building, a basketball court and a horseshoe pitching complex. Construction has recently been completed on a soft ball field, concession area, parking lot and playground area at Marshall Park.

The Scott County Community Park, consisting of 90 acres, is being developed. Already the park has baseball fields; several tennis, basketball and volleyball courts; a lighted horseshow ring and show barn; a parking area; and a playground area.

Private facilities in the county include an 18-hole golf course, swimming pool, bowling alley, riding club, and campgrounds.

Georgetown College offers sporting events and cultural activities including concerts, lectures and theater.

### Area (Within 60 miles)

The Kentucky Horse Park, a park dedicated to horses and to man's love for horses, is located approximately half way between Georgetown and Lexington. The park, which contains more than 1,000 acres of Kentucky Bluegrass, features the International Museum of the Horse; the Man O'War Memorial; an antique carriage display; horseback and pony rides; walking farm tours; horse-drawn tours; planned recreation; a restaurant; a gift shop and a campground area, which offers swimming, tennis, and planned activities. Numerous special events are held year-round and include various horse shows, steeplechasing, dressage, polo games, and three-day eventing.

Lexington, 16 miles south of Georgetown, offers a variety of cultural, sporting, and recreational activities. Thoroughbred and harness racing is presented at Keeneland Race Course and the Red Mile Harness Track during several meets each year. The University of Kentucky and Transylvania University offer a number of sporting events. The University of Kentucky basketball games are held at Rupp Arena, the world's largest basketball arena. Other attractions include Lexington Philharmonic Concerts, Lexington Children's Theatre, and plays performed by Broadway touring companies, all held in the recently renovated Opera House.



Waveland State Shrine, 20 miles south of Georgetown near Lexington, features an 1847 Greek Revival mansion depicting Kentucky lifestyles from the days of early settlers to the antebellum era of gentility and elegance as well as the Civil War and postwar periods. The shrine also includes the Kentucky Life Museum and a plantation village on ten acres with many shops and displays.

White Hall State Shrine, 40 miles south of Georgetown near Richmond, one of the grand estate houses of post-Civil War Kentucky, is the Italianate mansion of Cassius Marcellus Clay, the early abolitionist and politician. Kentucky handcrafts are sold in the White Hall gift shop, only a short walk from the mansion.

The spirit of Daniel Boone and his pioneers is reborn at Fort Boonesborough State Park in Boonesborough, approximately 40 miles south of Georgetown. In the re-created fort 16 pioneer crafts of the eighteenth century are demonstrated by Kentuckians using functioning antiques from the frontier era. Cabins are furnished as they would have been in the days of Boone and documentary films are presented which depict the struggle of the first Kentuckians to make the Kentucky wilderness a home. A gift shop within the fort offers for sale all the handcrafted items made at the fort, along with a wide variety of handcrafts from throughout Kentucky. Other recreational facilities and activities of the park include the finest sand beach on the Kentucky River with a modern bathhouse, sun deck, and snack shop; a modern camping area with 187 sites; a central service building housing showers, restrooms, and laundry facilities for campers; a pavilion with a gift shop and grocery inside and a playground and basketball, volleyball, and shuffleboard courts on the grounds; and planned daily activities and special events under the guidance of a trained recreation director. Near the park is the dock of the Dixie Belle sternwheel excursion boat which operates one-hour trips daily on the Kentucky River leaving from the Fort Boonesborough boat dock.

Blue Licks Battlefield State Park is located near Mt. Olivet, 45 miles north of Georgetown. The 100-acre park is on the site of what is known as "The Last Battle of the Revolution" and the last major confrontation between the Indians and the pioneers. A museum features Indian and pioneer artifacts, an audiovisual program, and prehistoric bones from animals trapped at Blue Licks. Facilities include ten primitive campsites, a gift shop, picnic shelters and grills, a playground, a snack bar, and an Olympic-size swimming pool. Fishing is available at the Licking River which runs through the park.

Old Fort Harrod State Park, 49 miles southwest of Georgetown, is a 28-acre park in Harrodsburg that features a full-scale reproduction of the original Fort Harrod. The park also contains the log cabin where Abraham Lincoln's parents were wed, the Mansion Museum which houses mementos associated with the great periods of Kentucky history, a pioneer cemetery, and a federal monument dedicated to pioneers. The "Legend of Daniel Boone," an outdoor drama which brings to life on stage the men and women who made Kentucky, is performed in the park amphitheatre during the summer months.



Kincaid Lake State Park, 51 miles northeast of Georgetown near Falmouth, offers many opportunities for the outdoors lover. The park offers a 250-acre lake, a sand beach, an 80-site campground, a gift shop/grocery store, a bathhouse, swimming, boating, hiking, picnicking, an amphitheatre, badminton, shuffleboard, miniature golf, tennis, and organized recreational programs in the summer months.

Constitution Square State Shrine, 51 miles southwest of Georgetown in Danville, is a reproduction of Kentucky's first courthouse square, including the original 1792 post office which was the first in the west.

Isaac Shelby State Shrine, also near Danville, is the burial site of Kentucky's first governor and one of the Commonwealth's foremost statesmen.

Big Bone Lick State Park in Boone County, 58 miles north of Georgetown, provides a unique combination of educational and recreational pleasures. Visitors can walk through the original "jellyland," now a natural outdoor museum with replicas and exhibits that tell the story of Big Bone Lick. Recreational activities and facilities include a boat launch and picnic area on the Ohio River, a modern campground, fishing in the nearby lake, an indoor museum and gift shop, picnic grounds, tennis, shuffleboard, volleyball, basketball, horse shoes, planned recreation, and a swimming pool in the camping area open Memorial Day through Labor Day.