

1970

# Industrial Resources: Warren County - Bowling Green

Kentucky Library Research Collections  
Western Kentucky University, [spcol@wku.edu](mailto:spcol@wku.edu)

Follow this and additional works at: [https://digitalcommons.wku.edu/warren\\_cty](https://digitalcommons.wku.edu/warren_cty)



Part of the [Business Administration, Management, and Operations Commons](#), [Growth and Development Commons](#), and the [Infrastructure Commons](#)

---

## Recommended Citation

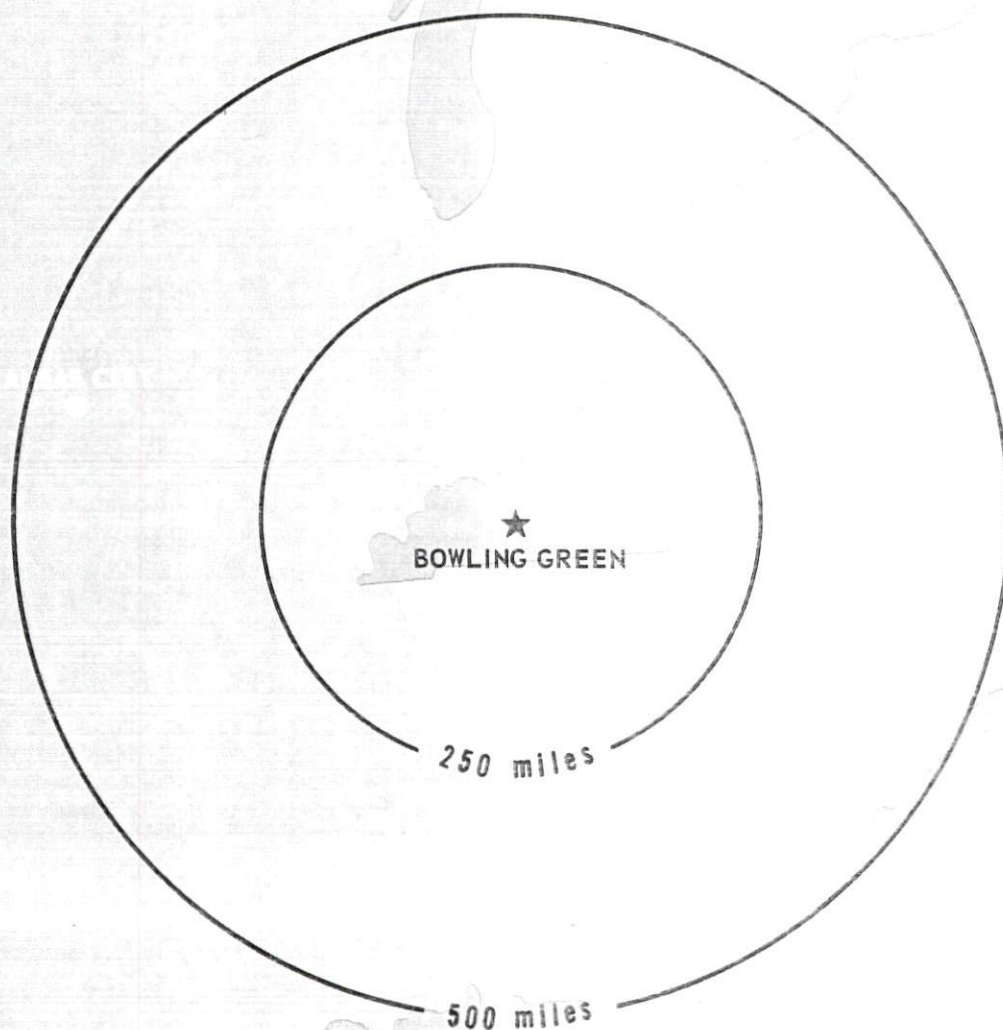
Kentucky Library Research Collections, "Industrial Resources: Warren County - Bowling Green" (1970). *Warren County*. Paper 15.  
[https://digitalcommons.wku.edu/warren\\_cty/15](https://digitalcommons.wku.edu/warren_cty/15)

This Report is brought to you for free and open access by TopSCHOLAR®. It has been accepted for inclusion in Warren County by an authorized administrator of TopSCHOLAR®. For more information, please contact [topscholar@wku.edu](mailto:topscholar@wku.edu).

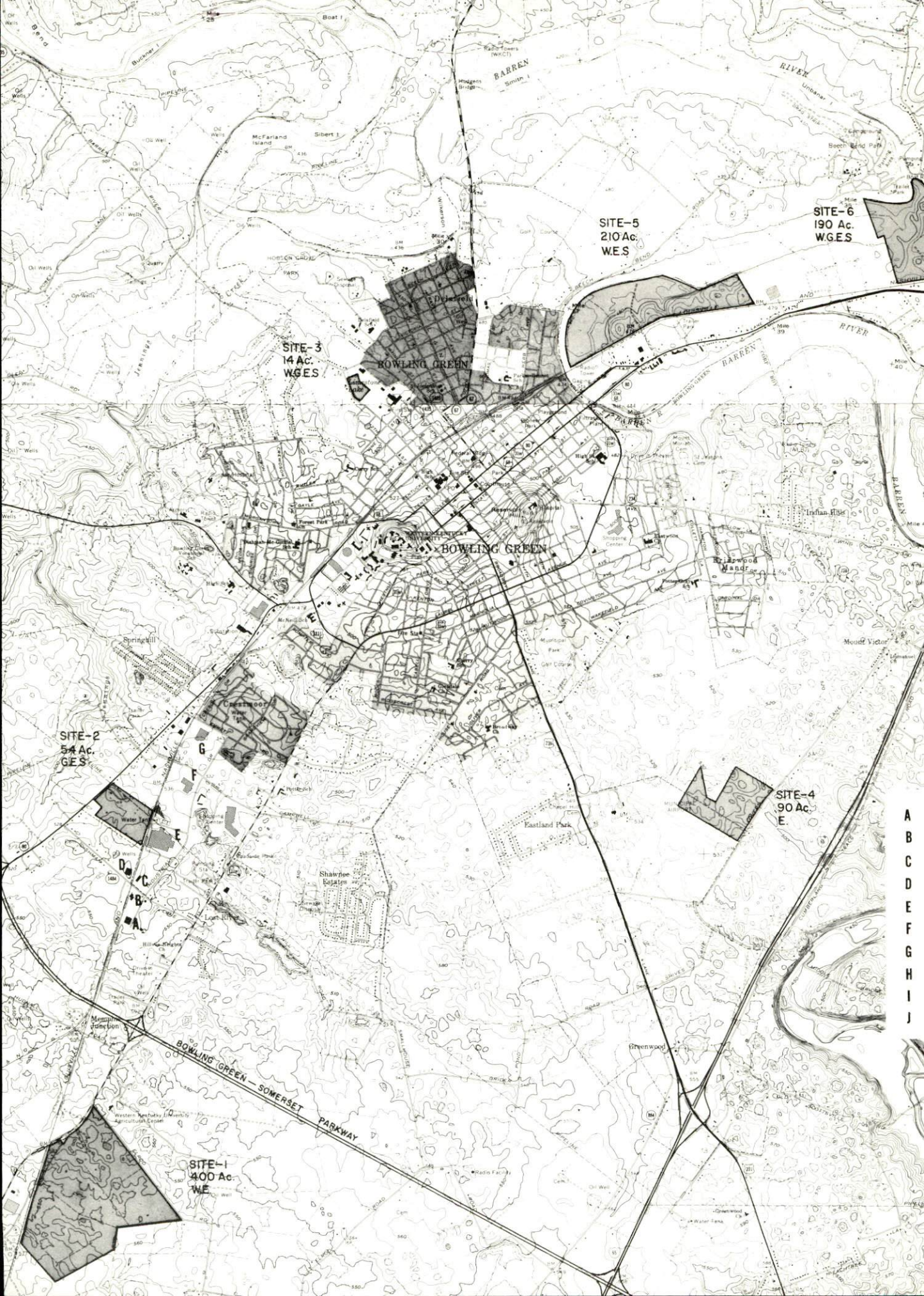
Wanner

# INDUSTRIAL RESOURCES

## **BOWLING GREEN KENTUCKY**









BOWLING GREEN INDUSTRIAL SITES

1970





SITE-7  
263 Ac  
E

SITE-8  
390 Ac  
E

LEGEND  
UTILITIES AVAILABLE  
W - WATER  
G - GAS  
E - ELECTRICITY  
S - SEWERAGE

CORRUGATED CONTAINER CO.  
CONCRETE PRODUCTS CO.  
WREN PRODUCTS CORP.  
UNICO  
CUTLER-HAMMER, INC.  
MASTER DIV. OF KOEHRING CO.  
DETREX CHEMICAL CO.  
WELLINGTON FILMS & FOILS  
AIRTEMP DIV., CHRYSLER CORP.  
FIRESTONE TEXTILES CO.

0 1000 2000 3000 4000 FEET  
1 MILE  
CONTOUR INTERVAL 10 FEET  
BASE: USGS 7.5 MINUTE SERIES -1954-68



BOWLING GREEN INDUSTRIAL SITES  
1970

For additional information concerning the following sites, contact Harold H. Huffman, Executive Vice President, Bowling Green-Warren County Chamber of Commerce, Bowling Green, Kentucky; or the Kentucky Department of Commerce, Frankfort, Kentucky.

- SITE #1:** ACREAGE AND TOPOGRAPHY: 400 acres, level to gently rolling  
LOCATION: Approximately 1 1/2 miles southeast of city limits  
HIGHWAY ACCESS: Fronts on U.S. 31-W; Elrod Road along eastern boundary  
RAILROADS: Louisville & Nashville tracks along western boundary  
WATER: Westside Water District  
SIZE LINE: 6-inch line along paved road, western boundary  
GAS: Western Kentucky Gas Company  
SIZE MAIN: Gas pressure station on U.S. 31-W approximately 9,000 feet from northern boundary of site  
ELECTRICITY: Warren RECC  
SEWERAGE: Nearest line approximately 1 mile north of site  
OWNERSHIP: Private
- SITE #2:** ACREAGE AND TOPOGRAPHY: 54 acres, level to gently rolling  
LOCATION: Southwestern part of city  
HIGHWAY ACCESS: Fronts on U.S. 68  
RAILROADS: Louisville & Nashville tracks along eastern boundary of site  
WATER: Bowling Green Water-Sewer and Sanitation Commission  
SIZE LINE: 12-inch line approximately 1,200 feet from site  
GAS: Western Kentucky Gas Company  
SIZE MAIN: 3-inch high pressure transmission line along northern boundary  
ELECTRICITY: Bowling Green Electric Plant Board  
SEWERAGE: Bowling Green Water-Sewer and Sanitation Commission  
SIZE LINE: 12-inch line approximately 200 feet from eastern boundary  
OWNERSHIP: Private
- SITE #3:** ACREAGE AND TOPOGRAPHY: 14 acres, level  
LOCATION: Woodford Street - within northwestern city limits  
HIGHWAY ACCESS: Fronts on Woodford Street  
RAILROADS: Louisville & Nashville tracks are adjacent to site  
WATER: Bowling Green Water-Sewer and Sanitation Commission  
SIZE LINE: 10-inch line along Woodford Street  
GAS: Western Kentucky Gas Company  
SIZE MAIN: 6-inch main  
ELECTRICITY: Bowling Green Electric Plant Board  
SEWERAGE: Bowling Green Water-Sewer and Sanitation Commission  
SIZE LINE: 8-inch line along Woodford Street; 24-inch line across eastern boundary  
OWNERSHIP: Episcopal Church
- SITE #4:** ACREAGE AND TOPOGRAPHY: 90 acres, level to gently rolling  
LOCATION: Adjacent to Municipal Airport; southeast of city  
HIGHWAY ACCESS: Fronts on Route 627; approximately three-fourths mile from U.S. 231 and 1 3/4 miles from I-65 interchange  
RAILROADS: Not rail served  
WATER: Bowling Green Water-Sewer and Sanitation Commission  
SIZE LINE: 10-inch line approximately 1 mile southwest of site  
GAS: Western Kentucky Gas Company  
SIZE MAIN: 6-inch main approximately 4,600 feet from site  
ELECTRICITY: Warren RECC  
SEWERAGE: Bowling Green Water-Sewer and Sanitation Commission  
SIZE LINE: 12-inch line approximately 1 mile from site  
OWNERSHIP: City-County Airport Board
- SITE #5:** ACREAGE AND TOPOGRAPHY: 210 acres, level to gently rolling  
LOCATION: Adjacent to northeastern city limits  
HIGHWAY ACCESS: Access from U.S. 31-W  
RAILROADS: Louisville & Nashville tracks along southern boundary of site  
WATER: Northside Water District  
SIZE LINE: 16-inch line on site  
GAS: Western Kentucky Gas Company  
SIZE MAIN: 4-inch main along U.S. 31-W approximately 1,000 feet from site  
ELECTRICITY: Warren RECC  
SEWERAGE: Northside Water District  
SIZE LINE: 24-inch line on site  
OWNERSHIP: Private
- SITE #6:** ACREAGE AND TOPOGRAPHY: 190 acres, level to gently rolling  
LOCATION: 2 miles northwest of city  
HIGHWAY ACCESS: Access road to U.S. 31-W; approximately 1,000 feet from interchange leading to I-65  
RAILROADS: Louisville & Nashville tracks along southern boundary  
WATER: Northside Water District  
SIZE LINE: 16-inch line on south; 8-inch line on east  
GAS: Western Kentucky Gas Company  
SIZE MAIN: 4-inch main at site  
ELECTRICITY: Warren RECC  
SEWERAGE: Northside Water District  
OWNERSHIP: Bowling Green-Warren County Industrial Foundation, Inc.
- SITE #7:** ACREAGE AND TOPOGRAPHY: 263 acres, level to rolling  
LOCATION: 3 miles northwest of Bowling Green  
HIGHWAY ACCESS: Fronts on Jackson Grove Road; approximately one-half mile from U.S. 31-W  
RAILROADS: Louisville & Nashville tracks along northern boundary  
WATER: Northside Water District  
SIZE LINE: 8-inch line along U.S. 31-W approximately 2,000 feet from site; 3-inch line along Jackson Grove Road  
GAS: Western Kentucky Gas Company  
SIZE MAIN: 6-inch main along U.S. 31-W  
ELECTRICITY: Warren RECC  
SEWERAGE: Northside Water District  
SIZE LINE: 15-inch line at corner of U.S. 31-W and Bristow Road  
OWNERSHIP: Private
- SITE #8:** ACREAGE AND TOPOGRAPHY: 380 acres, gently rolling  
LOCATION: 3 1/2 miles northeast of city  
HIGHWAY ACCESS: Paved highway access to Kentucky 807  
RAILROADS: Louisville & Nashville tracks approximately 150 feet from northern edge of site  
WATER: Northside Water District  
SIZE LINE: 8-inch line along U.S. 31-W; 4-inch line along Kentucky 807  
GAS: Western Kentucky Gas Company  
SIZE MAIN: 6-inch main along U.S. 31-W  
ELECTRICITY: Warren RECC  
SEWERAGE: Northside Water District  
SIZE LINE: 15-inch line on U.S. 31-W; approximately 4,500 feet from site  
OWNERSHIP: Private



INDUSTRIAL RESOURCES  
BOWLING GREEN, KENTUCKY

Prepared by  
The Kentucky Department of Commerce  
in cooperation with  
Bowling Green-Warren County Chamber of Commerce  
1970

## TABLE OF CONTENTS

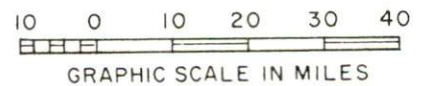
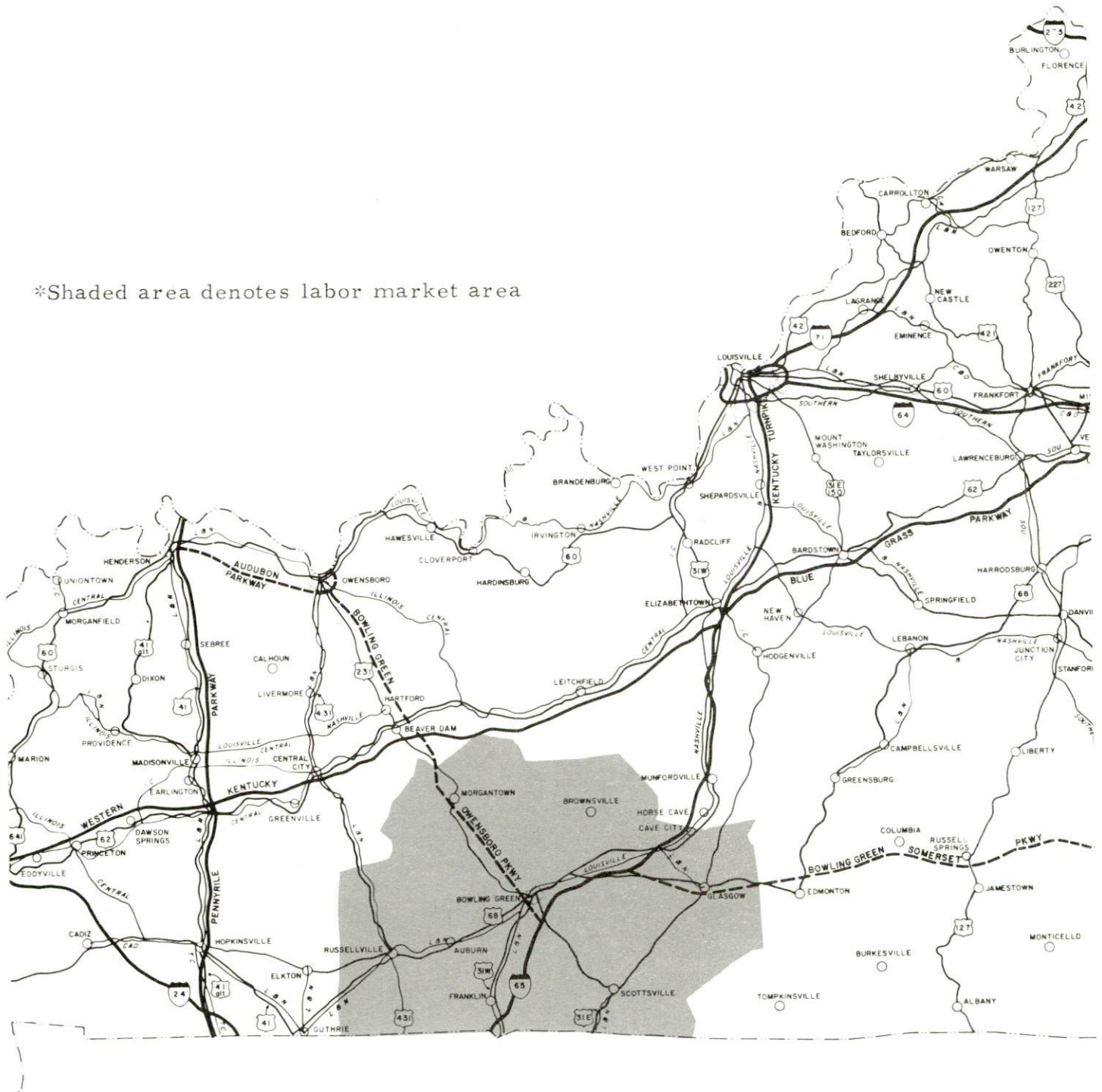
<u>Chapter</u>	<u>Page</u>
INDUSTRIAL SITES . . . . .	i
BOWLING GREEN, KENTUCKY - A RESOURCE PROFILE . . .	1
THE LABOR MARKET . . . . .	7
Population Trends . . . . .	7
General Employment Characteristics . . . . .	7
Manufacturing Employment Trends by Industry . . . . .	7
Major Bowling Green Manufacturing Firms, Their Products and Employment . . . . .	8
Wage Rates for Selected Occupations . . . . .	9
Labor Organizations . . . . .	10
Current and Future Labor Supply . . . . .	15
Total Personal Income . . . . .	15
Per Capita Personal Income . . . . .	15
EDUCATION . . . . .	16
Public Schools . . . . .	16
Non-Public Schools . . . . .	16
Vocational Schools . . . . .	19
Colleges and Universities . . . . .	19
TRANSPORTATION . . . . .	21
Rail . . . . .	21
Truck Service . . . . .	21
Air . . . . .	22
Bus . . . . .	22
Taxi . . . . .	22
Rental Services . . . . .	22
POWER AND FUEL . . . . .	23
Electricity . . . . .	23
Natural Gas. . . . .	23
WATER AND SEWERAGE . . . . .	24
Water . . . . .	24
Sewerage . . . . .	26



<u>Chapter</u>	<u>Page</u>
LOCAL GOVERNMENT . . . . .	27
City . . . . .	27
County . . . . .	27
Assessed Value of Property - 1970 . . . . .	27
Local General Property Tax Rates Per \$100 of	
Assessed Valuation - 1970 . . . . .	27
Planning and Zoning . . . . .	28
Safety . . . . .	28
Police . . . . .	28
Fire . . . . .	28
Rescue Service . . . . .	29
Sanitation . . . . .	29
HEALTH . . . . .	30
Hospitals . . . . .	30
Nursing Homes . . . . .	30
Public Health . . . . .	30
OTHER LOCAL FACILITIES . . . . .	31
Communications . . . . .	31
Library Services . . . . .	31
Religious Institutions . . . . .	32
Financial Institutions . . . . .	32
Hotels and Motels . . . . .	32
Clubs and Organizations . . . . .	32
RECREATION . . . . .	34
Local . . . . .	34
Area . . . . .	34
AGRICULTURE - NATURAL RESOURCES - CLIMATE . . . . .	36
Agriculture . . . . .	36
Natural Resources . . . . .	36
Climate . . . . .	36
HISTORY . . . . .	37

# BOWLING GREEN LABOR MARKET AREA

\*Shaded area denotes labor market area





## BOWLING GREEN, KENTUCKY - A RESOURCE PROFILE

### Location

Bowling Green, county seat of Warren County and home of Western Kentucky University, is a progressive and fast-growing southern Kentucky city serving the area as an educational, industrial, and commercial center. Geographically, Bowling Green is located in the southwestern corner of central Kentucky in the Pennyriple Region, 26 miles north of the Kentucky-Tennessee border; 110 miles southwest of Louisville, Kentucky; 110 miles southeast of Evansville, Indiana; and 60 miles northeast of Nashville, Tennessee.

Bowling Green, with a population of 34,594, was designated a Model City in 1968. The initiation of a vigorous model cities program is strong proof that the community is united in its efforts to create an environment of excellent livability for all its residents.

Warren County, with a population of 54,753, covers an area of 546 square miles. The county is bound on the east by Barren County, on the south by Allen and Simpson Counties, on the west by Logan County, and on the north by Butler and Edmonson Counties. The Barren River flows through Warren County and the Green River forms the county's northern boundary.

### The Economic Framework

Total employment in Warren County averaged 22,700 in 1969, including 5,900 jobs in manufacturing, 5,560 in trade and services, and 4,200 in government. Manufacturing employment has increased by 3,170 jobs or 104 percent since 1959, with major industrial employment growth in the machinery and metal products, apparel and textiles industries.

Per capita income in the county in 1968 was \$2,423, an increase of \$972 since 1959.

Bowling Green is the hub of a labor market area that includes Warren and its six surrounding counties. Area employment in 1969 totaled 60,800. Manufacturing furnishes 16,120 jobs. Area industrial employment has more than doubled since 1959 with sharpest gains in the machinery and metal products, equipment, apparel, lumber, furniture, chemical, and rubber industries.

## Resources for Growth

1. There is a current estimated labor supply of 4,190 men and 2,430 women available for industrial jobs in the labor market area. In addition, 6,725 young men and 6,715 young women will become 18 years of age by 1976 and potentially available for employment.

2. The local transportation capability is very good. The Louisville & Nashville Railroad provides freight and passenger service and a variety of other services including piggyback facilities. Interstate 65, a major highway artery into the industrial south, midwest and east, is routed through Warren County with interchanges located east and southeast of Bowling Green, only minutes from the city's business district. The proposed route of the new Owensboro-Bowling Green-Somerset Parkway passes near the western and southern city limits. Commercial air service is available at the Bowling Green-Warren County Municipal Airport.

3. Energy - both gas and electricity - is available in large quantity. Natural gas service is provided by the Western Kentucky Gas Company. Electric power is provided by the Bowling Green Electric Plant Board and the Warren Rural Electric Cooperative Corporation, with TVA serving as the source of supply. Warren RECC recently activated a new 161,000-volt substation near the city. The local water supply from the Barren River is more than adequate for continued growth.

4. Industrial sites - Bowling Green has eight industrial sites ranging from 14 to 400 acres. Five of the sites are rail-served and two of the sites are within a few hundred feet of rail. Additional acreage is available for industrial use.

5. Educational opportunities offered in Bowling Green are excellent. Two school systems operate within the county. The Bowling Green Area Vocational School offers career training in 25 different courses.

Western Kentucky University, located in Bowling Green, confers six undergraduate degrees: the Bachelor of Arts, the Bachelor of Music, the Bachelor of Fine Arts, the Bachelor of Science, the two-year Associate of Arts, and the two-year Associate of Science. The Graduate School offers the Master of Arts Degree, the Master of Science Degree, the Master of Music Degree, the Master of Business Administration Degree, and the Master of Public Service Degree. A joint Doctoral Program with the University of Kentucky and Peabody College is available to students who have completed their master's degree at Western. The Western campus, situated on a hill overlooking the City of Bowling Green, is acclaimed as one of the most beautiful in the nation. The University campus has 40 buildings and embraces an area of 183 acres. Western aspires to a balanced program of intercollegiate athletics and intramural and recreational activities compatible with a strong physical education instructional program.



## Community Programs for Improvement

Cooperation, planning, and action have resulted in successful community programs and industrial expansion for Bowling Green. Public and private entities are continuing in their plans for community improvements.

Industrial growth is evidenced by the continuing expansion of plants located in Bowling Green. In 1968, expansion plans were announced by News Publishing Company, True Temper Corporation and Corrugated Container Company. In 1969, expansion plans were announced by the Bowling Green Manufacturing Company and the Capitol Aluminum Manufacturing Company, Inc.

In 1969, the Airtemp Division of Chrysler Corporation announced plans to locate a 600,000-square foot plant in Bowling Green. An estimated 1,000 persons will be employed in the recently completed plant.

United Co-Operatives, Inc., a manufacturing and procurement co-operative, recently constructed a national distribution center and warehouse in Bowling Green containing 114,000 square feet of space and costing in excess of \$1 million, including equipment.

Communications services in the city are being expanded and improved. During 1970, the South Central Bell Telephone Company's total expenditures exceeded \$1,000,000. This included improvements and expanding existing service to meet the needs of the city's growth. Plans for the expansion of the post office call for doubling the present building size and adding more parking spaces. Seventeen thousand square feet of floor space will be added to the existing structure with occupancy expected in May of 1971. The Park City Daily News is undergoing an improvement and expansion program which will provide physical facilities equal to those of any newspaper its size in the southeastern section of the nation. WLTV, Channel 13, is relocating its transmitter site approximately 5 miles north of Bowling Green. A new building will house a new transmitter, remote control facilities, and an emergency power generator. The new tower and antenna will have a height of 603 feet above ground elevation of 740 feet, giving a total elevation of 1,343 feet above average sea level. The station is also remodeling its studios and installing two new color studio cameras, one color film camera, and two new video tape machines.

Transportation facilities in the area have been improved with the added service of a new trucking company, the Bowling Green Express. A runway at the local airport has been extended to 6,500 feet, a building for the Federal Aviation Administration was completed in 1970, and additional lighting facilities are to be installed.

New, modern educational buildings have been constructed. The city's new high school opened for its first year of operation in 1970. Approximate cost of the new structure is \$3,500,000. The school is completely carpeted, air conditioned, and equipped to originate and transmit programs through TV to all of the classrooms. An occupational training center is to be constructed as an additional pod to the new school. The county school system recently completed the construction of an elementary school. The new \$650,000 facility is designed to accommodate 650 students.

A new addition to the Bowling Green-Warren County Hospital was opened in early 1970. The Medical Center Hospital is now being constructed on a 22-acre site. The \$5 million, 150-bed facility is being built by the Hospital Corporation of America and is scheduled to open in the winter of 1971.

Financial institutions are planning expansions and new facilities. The American National Bank and Trust Company is planning the construction of a new \$150,000 branch bank. Construction is expected to be completed in early 1971. The bank is also planning a major remodeling of its present downtown facility. Plans are now in the formative stage. Land adjoining the present building has been acquired and construction is expected to begin early in 1971 with completion in the fall of 1971. The expansion will provide additional drive-in facilities. The Citizens National Bank of Bowling Green is planning the construction of a new building. A site has been selected and preliminary plans are being drawn. Construction may begin early in 1971.

City services are being expanded and improved. The Bowling Green Water-Sewer and Sanitation Commission is planning to construct two elevated water storage tanks and to replace 50,000 feet of small lines with 6- to 8-inch lines. Planned construction of a 15-inch sewerage main to connect with lines entering the large sewage treatment plant will eliminate usage of the small sewage treatment plant. A 1,250-gpm pumper has been ordered for the fire department with delivery expected in January of 1971. A 10-ton air conditioning unit was presented to the city and has been installed in the youth center building. The city has conducted a study of the fringe areas of the city - the potential annexation areas. The study is now ready for review.

Water and sewerage services to portions of the county are being improved and extended. Construction of the Northside Water District's sewerage system is 85 percent complete. The Westside Water District has an expansion project underway which includes extension of mains and additional water storage tanks. This expansion will extend service to an additional 530 customers.



The city and county are providing additional recreational facilities for the residents. The Open Space Projects Commission is made up of operating heads of the various departments of the city. The Commission's prime responsibility is to administer two open space projects: (1) Hobson Grove Park - a city-wide recreation area - has been completed. Lighting systems - 1,500-watt multi-vapor fixtures - were recently installed at the two Hobson Grove baseball fields. (2) Roland Bland Park - neighborhood recreation park - is the first physical improvement to be initiated in the model cities area. The Riverside House project - restoration of the house and grounds into a historic landmark - is being undertaken by the Hobson House Association, a non-profit organization. This project has been approved and the local share of cost has been raised. This project is scheduled for completion in April of 1971. Ed Spear Park, a 9 1/2-acre park being developed in Warren County, will have two baseball diamonds, four tennis courts, basketball court, tot lot, two picnic shelters, and a parking lot for approximately 160 cars.

In 1968, Bowling Green was designated a Model City by the U. S. Department of Housing and Urban Development. The city has completed the comprehensive planning phase of this program and is presently involved in its first action year. The model neighborhood encompasses 1,520 acres of land and 7,200 residents and is located in the northwest quadrant of the city. Areas of major concern are: (1) Education, employment, and income maintenance; (2) Social services, health, crime and delinquency - a new municipal complex is planned which would contain all government offices and house the headquarters of local police and fire departments; (3) Housing, housing choice, relocation, and physical environment; (4) Transportation, design, new technology and historic preservation. The Bowling Green City Demonstration Agency has established technical advisory groups in each area of major concern. Some seventy-five organizations and groups volunteered representatives in their respective fields of expertise. The entire program is designed to provide maximum opportunity for the model neighborhood residents to develop social, economic, and educational capabilities.

#### Recreation, Entertainment, and Livability

Recreational facilities are plentiful in Bowling Green and within the Bowling Green area.

Intercollegiate athletic competition is found at Western Kentucky University. Western competes in seven varsity sports - basketball, football, baseball, tennis, track, golf, and cross-country.

The Bowling Green and Warren County recreation departments provide a variety of supervised recreation.



One thousand-acre Beech Bend Park's luxury campgrounds provide electricity, water hook-ups, hot showers, rest rooms, laundromat, and a well-stocked grocery. Riverside cabins and custom trailers may be rented. Indoor roller skating, canoeing, swimming, dragging and stock car racing, miniature golf, zoo, rides and amusements are just a few of the activities at Beech Bend Park.

Bowling Green is located in the center of Kentucky's cave country and near Park Mammoth Resort, which welcomes guests during all seasons to the natural wonders of its 2,000 hilltop acres. An indoor-heated swimming pool, 18-hole golf course, miniature golf course, tennis, skeet shooting, horseshoe courts, horseback riding, 101-room motor hotel, wading pool, shuffleboard, and badminton are all provided for the comfort and enjoyment of its guests.

At Mammoth Cave National Park is the world-famous Mammoth Cave, covering more than 150 miles of charted caverns. Cave attractions include the Snowball Dining Room, Frozen Niagara, Crystal Lake and Bottomless Pit. Other park attractions include a scenic boat trip on the Green River, nature trails, and an amphitheatre.

The Diamond Caverns, Mammoth Onyx Cave, Crystal Onyx Cave, and Hundred Dome Cave are also located in the Bowling Green area.

The Barren River Reservoir provides fishing, swimming, and boating. The Barren River Reservoir State Park has camping accommodations and complete boat and fishing facilities available. A 51-room lodge is to be completed for the 1971 season.

# THE LABOR MARKET

## POPULATION TRENDS <sup>1/</sup>

Area	Population			Percent Change	
	1970	1960	1950	1960-70	1950-60
Bowling Green	34,594	28,338	18,347	+22.1	+54.5
Labor Market Area	146,779	136,178	139,704	+ 7.8	- 2.5
Warren County	54,753	45,491	42,758	+20.4	+ 6.4
Allen County	12,393	12,269	13,787	+ 1.0	-11.0
Barren County	27,676	28,303	28,461	- 2.2	- 0.6
Butler County	9,432	9,586	11,309	- 1.6	-15.2
Edmonson County	8,482	8,085	9,376	+ 4.9	-13.8
Logan County	21,501	20,896	22,335	+ 2.9	- 6.4
Simpson County	12,542	11,548	11,678	+ 8.6	- 1.1

## GENERAL EMPLOYMENT CHARACTERISTICS, 1969 <sup>2/</sup>

Major Employment Group	Employment	
	Warren County	Labor Market Area
TOTAL	22,700	60,800
Agricultural	2,000	10,500
Nonagricultural	20,700	50,300
Manufacturing	5,900	16,120
Trade and Services	5,566	11,890
Government	4,200	7,800

## MANUFACTURING EMPLOYMENT TRENDS BY INDUSTRY SEPTEMBER 1959 AND 1969 <sup>3/</sup>

Industry	Warren County			Labor Market Area		
	1969	1959	% Change	1969	1959	% Change
TOTAL	6,205	3,035	+104.4	16,568	6,783	+ 144.3
Food and kindred products	641	512	+ 25.2	992	891	+ 11.3
Tobacco	111	124	- 10.5	124	125	- 0.8
Apparel, textiles, leather	1,532	731	+109.6	4,891	2,801	+ 74.6
Lumber & furniture	331	131	+152.7	1,400	516	+ 171.3
Printing, publishing, paper	124	53	+134.0	226	117	+ 93.2
Chemicals, petroleum, coal, rubber	29	9	+222.2	900	70	+ 1185.7
Stone, clay & glass	31	14	+121.4	59	63	- 6.3
Primary metals	0	0	-	386	214	+ 80.4
Machinery & metal products	3,393	1,461	+132.2	7,418	1,985	+ 273.7
Other	13	0	-	172	1	+17100.0

MAJOR BOWLING GREEN MANUFACTURING FIRMS,  
THEIR PRODUCTS AND EMPLOYMENT <sup>4/</sup>

Firm	Product	Employment		
		Total	Male	Female
Airtemp Division, Chrysler Corp.	Air conditioning and refrigeration equipment	500		
American Bread Co. of Kentucky	Bread, rolls	125	122	3
American Chain & Cable Co.	Welding, electrodes	75		
J. E. Bohannon Co.	Tobacco redrying and packing	151	99	52
Borders Pure Milk Co.	Milk, ice cream, butter	84	72	12
Bowling Green Mfg. Co.	Carburetors, distributors	1,423	925	498
Brown's Dairy Foods, Inc.	Milk, ice cream	50	45	5
Capitol Aluminum Mfg. Co., Inc.	Aluminum windows, doors and awnings	38	36	2
Coca-Cola Bottling Works, Inc.	Carbonated beverages	53	48	5
Concrete Products Co. of Bowling Green, Inc.	Concrete products	25	24	1
Corrugated Container Co., Division of Corco	Boxes	53	46	7
Cutler-Hammer, Inc.	Electrical, electronic controls	900	600	300
Detrex Chemical Industries, Inc.	Commercial dry cleaning equipment, industrial degreasing equipment	205	184	21
Dibrell Burford, Inc.	Tobacco redrying	550	350	200
Field Packing Co., Inc.	Poultry processing	160	85	75
Firestone Textiles Company	Tire fabric	642	466	176
Master Division of Koehring Company	Oil-fired portable space heaters	235	199	36
Nehi Royal Crown Bottling Co., Inc.	Soft drinks	69	65	4
News Publishing Co.	Newspaper, job printing	61	42	19
Pedigos Pork Rind Co., Inc.	Fish baits, lures	17	13	4
Pet, Inc.	Evaporated milk, tin cans	115	108	7
Scott Tobacco Co.	Twist, smoking tobacco	90	10	80

(cont'd)



Firm	Product	Employment		
		Total	Male	Female
Gordon Smith & Co., Inc.	Air compressors	22	20	2
L. F. Strassheim Co.	Wood brush blocks and handles, furniture parts, chairs, plastic handles	170	130	40
Tri-State Bedding & Furniture Co.	Mattresses, box springs, felt	57	45	12
True Temper Corp.	Wood dowels, hickory handle blanks, hickory golf shafts	30	27	3
The Bob White Packing Co., Inc.	Meat processing	17	16	1
Wellington Films & Foils, Inc.	Capacitor foils	17	13	4
Wren Products Corp.	Wood desk items, metal stampings, dishwasher tops	38	20	18
Union Underwear Co., Inc.	Men's and boys' underwear, infants' wear	910	110	800

WAGE RATES FOR SELECTED OCCUPATIONS  
BOWLING GREEN, KENTUCKY 5/

Classification	Wages Per Hour		
	Starting	Maximum	Prevailing
<u>Production Employees</u>			
Assembler	\$2.35	\$3.25	\$2.50
Drill Press Operator	2.25	3.00	2.25
Grinder, Machine	2.25	3.00	2.25
Inspector	2.40	3.40	2.50
Lathe Operator	2.00	3.25	2.50
Machinist, Set Up	2.25	3.00	2.25
Polisher & Buffer	2.00	2.75	2.25
Production Laborer	2.00	2.75	2.25
Punch Press Operator	2.00	2.80	2.30
Sprayer or Painter	2.05	3.00	2.30
Welder, Arc or Acetylene	2.05	3.00	2.75
Welder, Resistance or Spot	2.05	3.00	2.75

(cont'd)

Classification	Wages Per Hour		
	Starting	Maximum	Prevailing

### Service Employees

Carpenter	\$2.50	\$4.60	\$3.90
Crane Operator	2.50	5.40	4.60
Electrician	3.00	5.20	4.00
Janitor	1.60	2.30	2.00
Laborer	1.60	3.42	2.00
Machinist	2.50	4.00	3.25
Mechanic, Maintenance	2.50	4.90	3.00
Pattern Maker	2.50	4.35	3.42
Shipping Clerk	2.00	2.56	2.26
Truck Driver	1.60	3.85	2.75
Tool, Die or Gauge Maker	2.50	4.00	3.25
Welder, Acetylene, Carbon, and Arc	2.50	4.35	3.42

### Office Employees

Bookkeeper or Accounting Clerk	\$1.60	\$2.30	\$2.00
Draftsman	1.75	2.50	2.50
File Clerk	1.75	1.85	1.85
Receptionist	1.60	1.85	1.85
Secretary	2.00	2.50	2.00
Typist	1.60	1.75	1.75

## LABOR ORGANIZATIONS

### Union

International Construction & General  
Laborers, Local No. 871  
Sheet Metal Workers' International  
Association  
  
United Brotherhood of Carpenters &  
Joiners, Local No. 2561  
Bakers & Confectionery Workers',  
and Teamsters  
International Association of  
Machinists & Aerospace Workers  
United Auto Workers  
Teamsters

### Representing Workers at:

Pet, Inc.  
Detrex Chemical Industries, Inc.,  
and Master Division of  
Koehring Company  
  
True Temper Corporation  
  
American Bread Co. of Kentucky  
Cutler-Hammer, Inc., and  
L. F. Strassheim Co.  
Chrysler Airtemp  
Corrugated Container Co.,  
Division of Corco



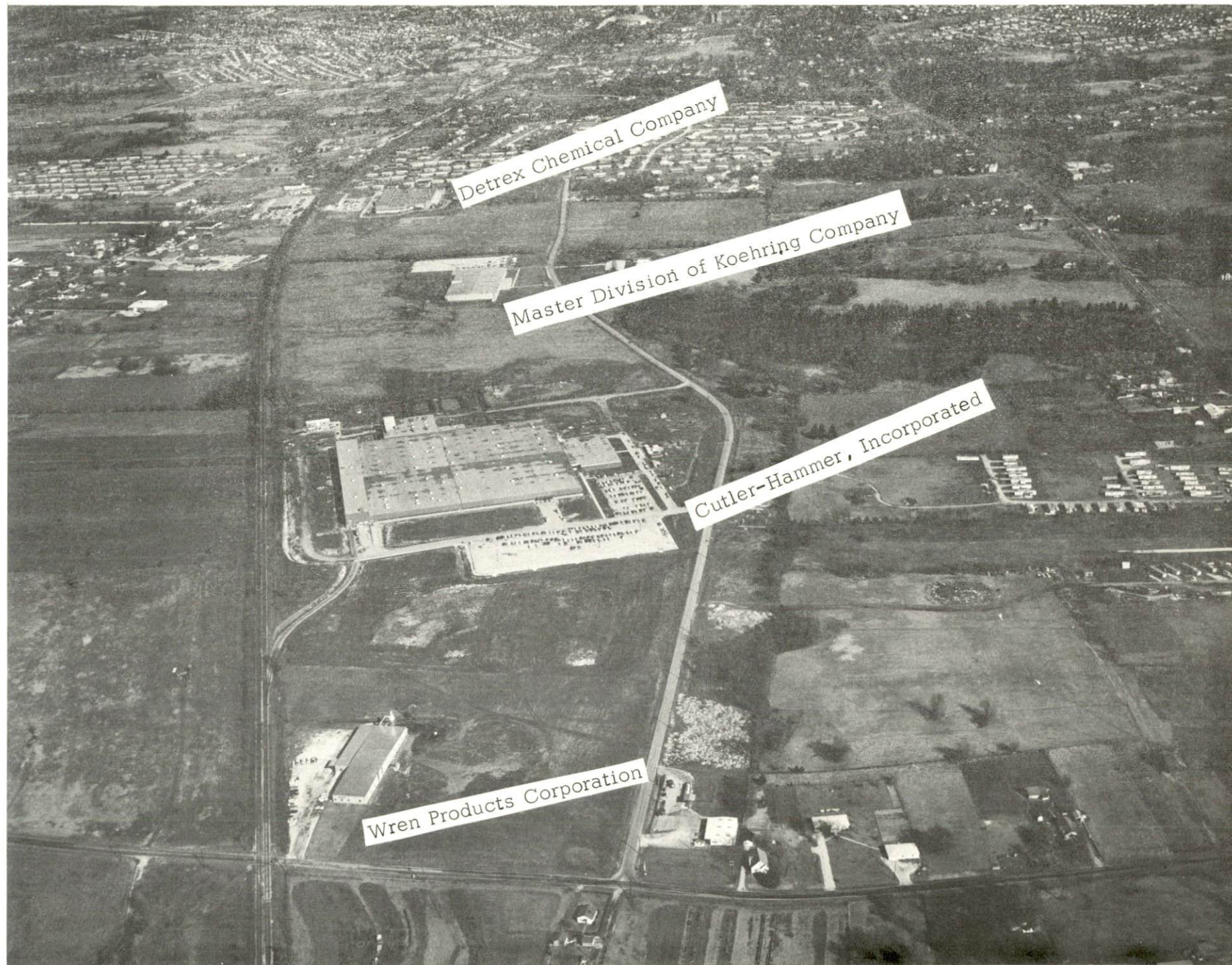


BOWLING GREEN MANUFACTURING CO.



FIRESTONE TEXTILES CO.





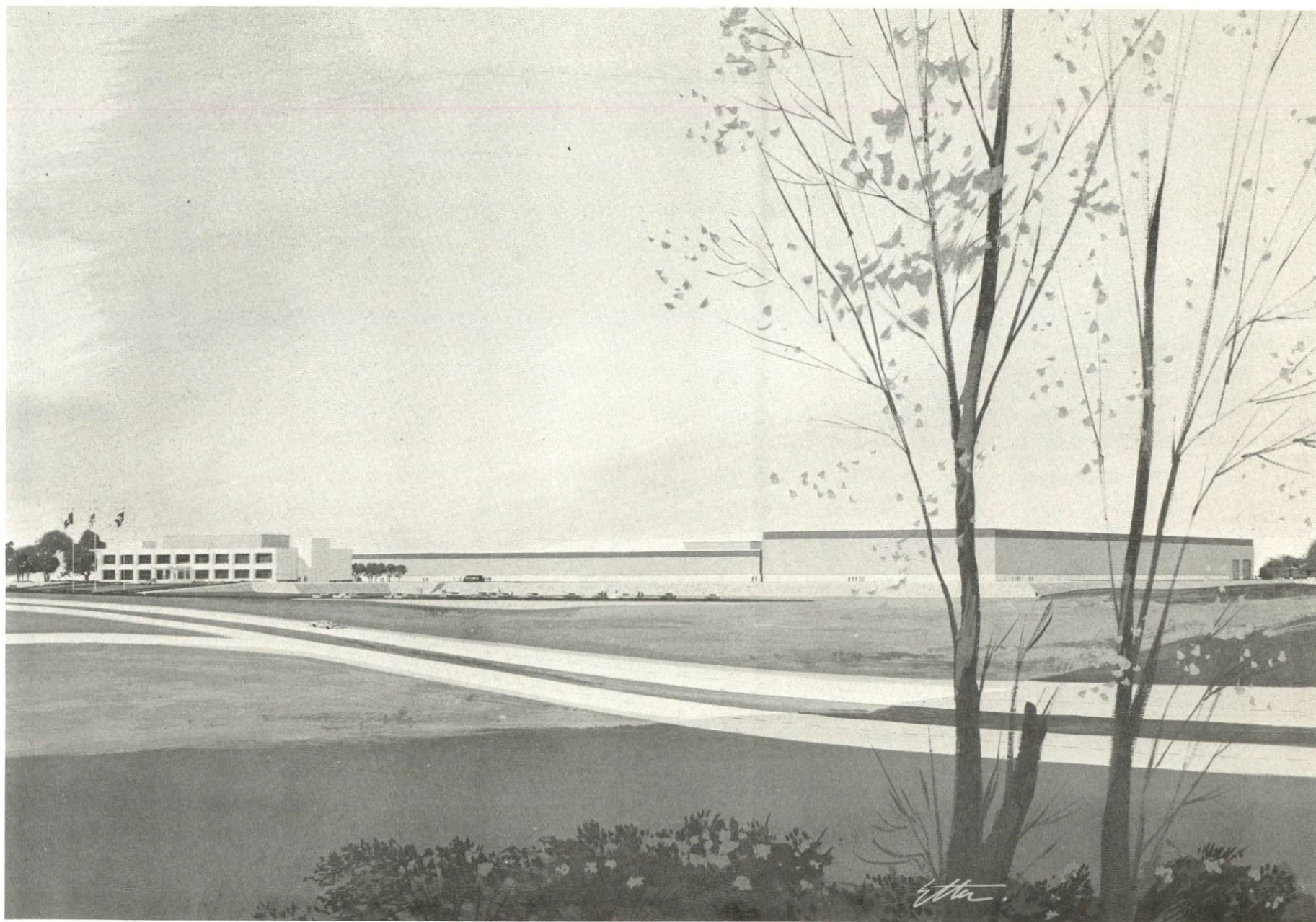
Detrex Chemical Company

Master Division of Koehring Company

Cutler-Hammer, Incorporated

Wren Products Corporation





AIRTEMP DIVISION, CHRYSLER CORP.





PEDIGO PORK RIND CO.



SCOTT TOBACCO CO.



CURRENT AND FUTURE LABOR SUPPLY -  
BOWLING GREEN LABOR MARKET AREA

County	Current Labor Supply, 1970 <sup>6/</sup>			Future Labor Supply by 1976 <sup>7/</sup> (Becoming 18 Years of Age)		
	Total	Male	Female	Total	Male	Female
Labor Market Area						
Area	6,622	4,193	2,429	13,442	6,726	6,716
Warren	1,047	842	205	4,644	2,337	2,307
Allen	864	579	285	1,072	530	542
Barren	1,497	869	628	2,837	1,424	1,413
Butler	1,190	736	454	951	481	470
Edmonson	1,005	784	221	777	383	394
Logan	765	229	536	2,043	1,015	1,028
Simpson	254	154	100	1,118	556	562

TOTAL PERSONAL INCOME <sup>8/</sup>

Area	1968	1959	% Change
Warren County	\$ 133,906,000	\$ 64,623,000	+107.2
Labor Market Area	332,064,000	159,036,000	+108.8
Kentucky	8,516,000,000	4,655,000,000	+ 82.9

PER CAPITA PERSONAL INCOME <sup>9/</sup>

Area	1968	1959	% Change
Warren County	\$2,423	\$1,451	+67.0
Labor Market Area	\$1,338 to 2,499	\$672 to 1,451	+99.1 to +72.2
Kentucky	2,645	1,552	+70.4

## EDUCATION

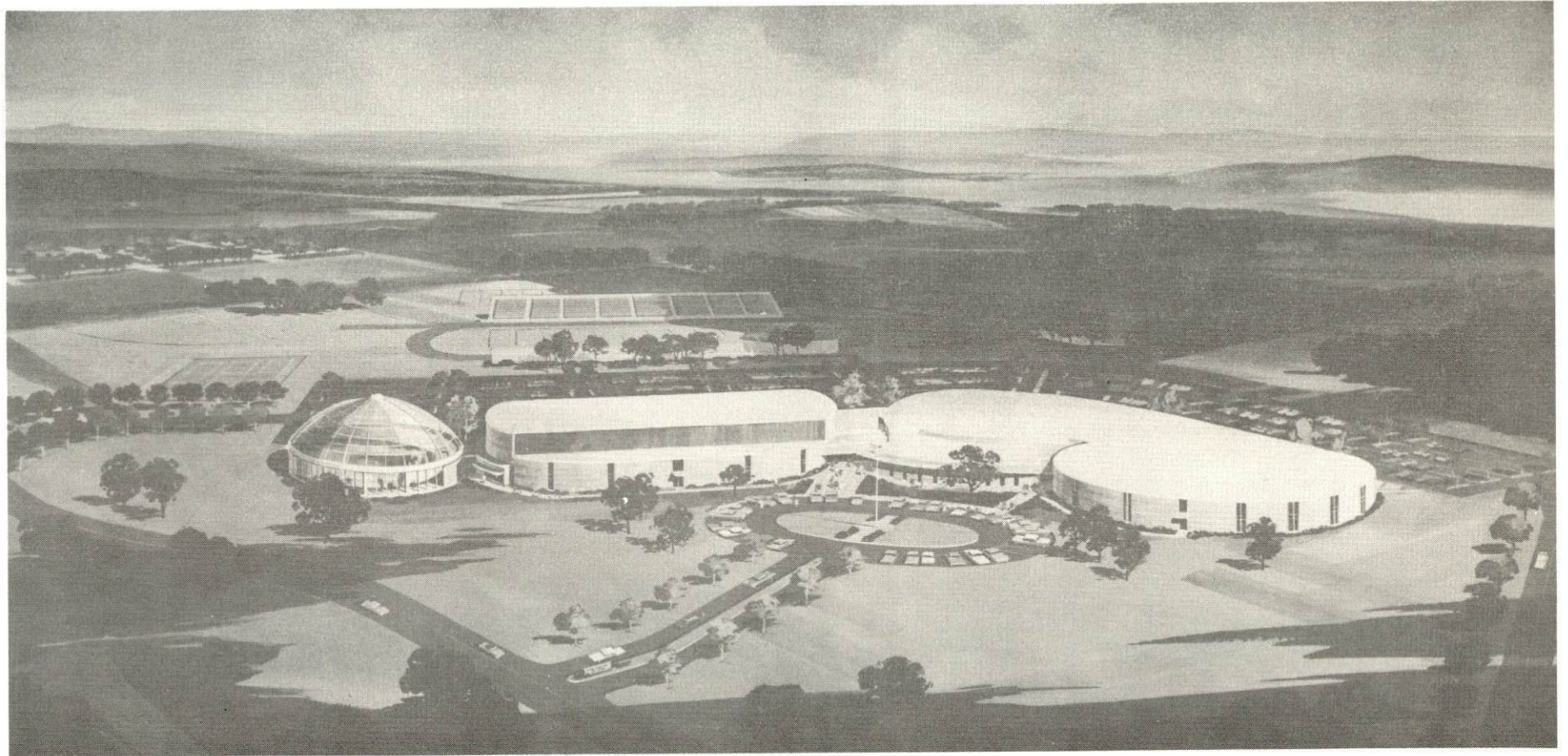
### Public Schools

	<u>Bowling Green</u>	<u>Warren County</u>
Total Enrollment, September 1970	5,735	6,127
Elementary	2,922	4,423
Junior High	1,043	
High School	1,770	1,704
Student-Teacher Ratio	25-1	21-1
Elementary	26-1	23-1
Junior High	25-1	
High School	23-1	17-1
State Rating of High School	Comprehensive	Standard (2)
Other Accreditations	Southern Association of Colleges and Schools	
Percent High School Graduates to College	75.1	39.2
Current Expenditures Per Pupil	\$415.52	\$410.39
Bonded Indebtedness, June 30, 1970	\$6,933,000	\$3,383,000

### Non-Public Schools

	<u>Enrollment</u>	<u>Student-Teacher Ratio</u>
Seventh Day Adventist (1-8)	8	8-1
St. Joseph Elementary (1-8)	160	13-1
Jones-Jagger Laboratory (1-6)	162	27-1
Potter Orphan Home and School (6-8)	50	17-1





BOWLING GREEN HIGH SCHOOL





BOWLING GREEN AREA VOCATIONAL SCHOOL



## Vocational Schools

	<u>Nearest Area School</u>
Location	Bowling Green
Curriculum	General Clerical
	Electronics (Technology)
	Highway Technology
	Air Conditioning and Refrigeration
	Auto Body Repair
	Auto Mechanics
	Carpentry
	Commercial Foods
	Drafting
	Electricity
	Machine Shop
	Office Machine Repair
	Printing
	Radio and TV Repair
	Small Engine Repair
	Tool and Die Making
	Welding
	Distributive Education
	Dental Assistant
	Health Careers
	Nurse Aide
	O. B. Technician
	Practical Nursing
	Surgical Technician
	Ward Clerk

## Colleges and Universities

<u>Name</u>	<u>Area - Within 65 Miles</u>		<u>Highest Degree Conferred</u>
	<u>Location</u>	<u>Enrollment</u>	
Western Kentucky University	Bowling Green, Ky.	10,906	Masters
Hopkinsville Com- munity College	Hopkinsville, Ky.	486	Associate
Austin Peay State University	Clarksville, Tenn.	3,600	Masters
Fisk University	Nashville, Tenn.	-	-
Peabody College	Nashville, Tenn.	2,100	Ph.D.
Vanderbilt Univer- sity	Nashville, Tenn.	6,000	Ph.D.
Tennessee State University	Nashville, Tenn.	4,800	Masters



AERIAL VIEW OF WESTERN KENTUCKY UNIVERSITY



## TRANSPORTATION

### Rail

Line serving - Louisville & Nashville Railroad Company

Services - Passenger, freight, switching facilities, siding space,  
piggyback facilities, REA Express pickup and delivery service

### RAILWAY TRANSIT TIME FROM BOWLING GREEN, KENTUCKY, TO: 10/

No. of Days		No. of Days	
City	CL	City	CL
Atlanta, Ga.	2	Los Angeles, Calif.	4
Birmingham, Ala.	2	Louisville, Ky.	1
Chicago, Ill.	3	Nashville, Tenn.	1
Cincinnati, Ohio	1	New Orleans, La.	2
Cleveland, Ohio	3	New York, N. Y.	5
Detroit, Mich.	4	Pittsburgh, Pa.	4
Knoxville, Tenn.	2	East St. Louis, Ill.	2

### Truck Service

#### Company

#### Home Office

Bowling Green Express	Bowling Green, Kentucky
Associated Transport, Inc.	New York, New York
Cooper-Jarrett, Inc.	Orange, New Jersey
Dixie Ohio Express, Inc.	Akron, Ohio
Gateway Transportation Co., Inc.	La Crosse, Wisconsin
Majors Truck Line, Inc.	Caneyville, Kentucky
Manning Motor Express, Inc.	Glasgow, Kentucky
McLean Trucking Company	Winston-Salem, North Carolina
Roadway Express, Inc.	Akron, Ohio
Skaggs Transfer, Inc.	Louisville, Kentucky
Southern Forwarding Co., Inc.	Memphis, Tennessee
United Parcel Service	Louisville, Kentucky
Wilson Freight Company	Cincinnati, Ohio

# HIGHWAY MILES AND TRUCK TRANSIT TIME IN DAYS FROM BOWLING GREEN, KENTUCKY, TO SELECTED MARKET CENTERS

City	Highway Miles	Delivery Time <u>11</u> /			City	Highway Miles	Delivery Time		
		LTL	TL				LTL	TL	
Atlanta, Ga.	329	2	1		Los Angeles, Calif.	2,151	5	3	
Birmingham, Ala.	278	1	1		Louisville, Ky.	110	overnight		
Chicago, Ill.	403	1	1		Nashville, Tenn.	60	overnight		
Cincinnati, Ohio	221	1	1		New Orleans, La.	695	2	1	
Cleveland, Ohio	465	2	1		New York, N. Y.	893	3	2	
Detroit, Mich.	486	2	1		Pittsburgh, Pa.	510	2	2	
Knoxville, Tenn.	270	1	1		St. Louis, Mo.	303	1	1	

## Air

### Commercial

Bowling Green-Warren County Municipal Airport

Location: Bowling Green

Runways: 2 paved

Length: 4,000 feet; 6,500 feet

Traffic

Control: Wind tee, Airport Advisory Service

Lighting: Runways, obstructions, beacons, and wind tee until midnight

Services: 80 and 100 octane, jet A-50, storage, minor A & E repairs, FAA flight service station, taxi and rental car service, restaurant, Wright Airlines

## Bus

Southern Greyhound Bus Lines, Fuqua Bus Lines, Bowling Green-Hopkinsville Bus Company.

## Taxi

One company, radio - dispatched service.

## Rental Services

Automobile and truck rentals.



## POWER AND FUEL

### Electricity

Company serving Bowling Green - Bowling Green Electric Plant Board  
Source of power - Tennessee Valley Authority  
Total generating capacity - 18,202,090 KW  
Industrial rates furnished by - Bowling Green Electric Plant Board,  
Bowling Green, Kentucky 42101

Company serving Warren County - Warren RECC  
Source of power - Tennessee Valley Authority  
Total generating capacity - 18,202,090 KW  
Industrial rates furnished by - Warren RECC, P. O. Box 1118,  
Bowling Green, Kentucky 42101

### Natural Gas

Company serving - Western Kentucky Gas Company  
Source of supply - Texas Gas Transmission Corporation  
Size of transmission lines - 8-inch; 150 psi maximum  
Distribution lines - up to 8 inches  
BTU content - 1,000 BTU/CF  
Specific gravity - .60  
Distribution pressure - 60 psi maximum

Rates: Contact Western Kentucky Gas Company, 1020 College Street,  
Bowling Green, Kentucky 42101.

## WATER AND SEWERAGE

### Water

Company serving Bowling Green - Bowling Green Water, Sewer and Sanitation Commission

Source - Barren River

Treatment plant capacity - 15,200,000 gpd; average daily consumption - 5,000,000 gallons

Peak daily consumption - 5,500,000 gallons

Type treatment - sand filter

Storage capacity - 7,000,000 gallons; average pressure - 10 to 90 psi

Average temperature - 58.7 degrees

Size mains - 4 to 24 inches

### MONTHLY WATER RATES FOR WHOLESALE AND INDUSTRIAL CONSUMERS

#### Inside City Rates

First	300 cu. ft. per month	\$2.80 (minimum)
Next	200 cu. ft. per month	.82 per 100 cu. ft.
Next	1,000 cu. ft. per month	.75 per 100 cu. ft.
Next	1,500 cu. ft. per month	.65 per 100 cu. ft.
Next	3,000 cu. ft. per month	.50 per 100 cu. ft.
Next	4,000 cu. ft. per month	.40 per 100 cu. ft.
Next	15,000 cu. ft. per month	.30 per 100 cu. ft.
Next	25,000 cu. ft. per month	.23 per 100 cu. ft.
Next	25,000 cu. ft. per month	.20 per 100 cu. ft.
Next	25,000 cu. ft. per month	.19 per 100 cu. ft.
All over 100,000 cu. ft. per month		.18 per 100 cu. ft.

#### Outside City Rates

First	300 cu. ft. per month	\$3.92 (minimum)
Next	200 cu. ft. per month	1.148 per 100 cu. ft.
Next	1,000 cu. ft. per month	1.05 per 100 cu. ft.
Next	1,500 cu. ft. per month	.91 per 100 cu. ft.
Next	3,000 cu. ft. per month	.70 per 100 cu. ft.
Next	4,000 cu. ft. per month	.56 per 100 cu. ft.
Next	15,000 cu. ft. per month	.42 per 100 cu. ft.
Next	25,000 cu. ft. per month	.322 per 100 cu. ft.
Next	25,000 cu. ft. per month	.28 per 100 cu. ft.
Next	25,000 cu. ft. per month	.266 per 100 cu. ft.
All over 100,000 cu. ft. per month		.252 per 100 cu. ft.



Company serving northeast portion of Warren County - Northside  
Water District

Number of customers - 893

Remarks - The District purchases treated water from the City of  
Bowling Green; 4,000,000 gpd is available to the District. In addition,  
the District maintains a 150-gpm treatment plant.

Peak daily use - 700,000 gallons

Storage capacity - elevated tank, 50,000 gallons; reservoir, 383,000  
gallons

#### WATER RATES FOR NORTHSIDE WATER DISTRICT

<u>Cumulated</u>		<u>Cumulated</u>	
2,000	Minimum Bill (Res.)	\$4.00 for 2,000 gallons	\$ 4.00
5,000	Next 3,000 gallons	1.50 per 1,000 gallons	8.50
8,000	Next 3,000 gallons	1.00 per 1,000 gallons	11.50
12,000	Next 4,000 gallons	.85 per 1,000 gallons	14.90
32,000	Next 20,000 gallons	.75 per 1,000 gallons	29.90
82,000	Next 50,000 gallons	.60 per 1,000 gallons	59.90
142,000	Next 60,000 gallons	.50 per 1,000 gallons	89.90
	Next 3,000,000 gallons	.30 per 1,000 gallons	
	All over	.20 per 1,000 gallons	

Company serving southern portion of Warren County - Westside Water  
District

Number of customers - 677

Source - treated water purchased from City of Bowling Green

Amount available - 77,500,000 gallons per month

Average use - 6,000,000 gallons per month

Storage capacity - 567,000 gallons

#### WATER RATES FOR WESTSIDE WATER DISTRICT

First	2,000 gallons	\$5.00 (minimum)
Next	3,000 gallons	1.50 per M gallons
Next	3,000 gallons	1.00 per M gallons
Next	4,000 gallons	.85 per M gallons
Next	20,000 gallons	.75 per M gallons
Next	50,000 gallons	.60 per M gallons
All over		.50 per M gallons

Surface water sources - Barren River

Average discharge - about 2,400 cfs at Bowling Green

Expected ground water yield - northeast 5 gpm or less; balance of  
county 5 to 50 gpm except along drainage

Yield along main streams - 50 to 200 gpm

## Sewerage

Company serving Bowling Green - Bowling Green Water, Sewer and Sanitation Commission

Design capacity - (1) 5,500,000 gpd (2) 120,000 gpd

Average daily flow - (1) 3,200,000 gallons (2) 80,000 gallons

Treatment - primary and secondary

Type treatment - digester, chlorination

Treated effluent discharged into - (1) Barren River (2) sinkhole

Size of sanitary mains - 8 to 42 inches

Rates - existing sewer rates are 85 percent of existing water rates.

Company serving northeast portion of Warren County - Northside Water District

Remarks - The District's sewerage mains empty into Bowling Green's sewage treatment plant. 1,500,000 gallons can be disposed of daily.

The sewerage system is 85 percent completed. Estimated completion date is December 1970.

Rates - 100 percent of monthly water bill; 31.5 cents per 1,000 gallons for large industrial users.



## LOCAL GOVERNMENT

### City

Structure - Mayor - 4-year term; 4 commissioners - 2-year terms;  
city manager

Proposed budget 1970-71 - \$2,828,294; Water and Sewer Fund \$1,697,400;  
Sanitation Fund \$410,000

Fees and licenses - Minimum license fee of \$15 and also a 1 1/2 percent  
occupational tax based on net profits and on gross earnings of employees  
in the city. The business license fee is credited to the 1 1/2 percent  
net profits fee at the end of the fiscal year.

### County

Structure - County Judge - 4-year term; 8 magistrates - 4-year terms

Budget 1970-71 - General Fund \$585,729; Road Fund \$238,200

### Assessed Value of Property - 1970

<u>Classes of Property*</u>	<u>Bowling Green</u>	<u>Warren County</u>
Real Estate	\$137,118,100	\$272,761,480
Tangibles	67,005,910	88,355,715
Public Service	15,412,686 (1969)	28,452,675 (1969)

### Local General Property Tax Rates Per \$100 of Assessed Valuation - 1970 <sup>12/</sup>

<u>Taxing Unit**</u>	<u>Bowling Green</u>	<u>Warren County</u>
State	\$ .015	\$ .015
County	.163	.163
School	.803	.347
City	.315	
Total	\$1.296	\$ .525

\*Property assessed at 100 percent of fair value.

\*\*Manufacturing machinery, raw materials inventories and goods in process  
inventories are not subject to local tax. State rate is only \$0.15 per \$100.

## Planning and Zoning

Agency - City-County Planning Commission

Elements of Comprehensive Development Plan completed - Subdivision Regulations, City Base Map, Existing Land Use Map, Zoning Ordinance, Major Street Plan, Existing Land Use Analysis, Preliminary Land Use Plan, Community Facilities Plan, Neighborhood Analysis, Transportation Needs Study, Planning Area Base Map, Population Study, Economic Survey, Off Street Parking Facilities, General Plan, Public Improvements Program, Commercial Area Study, Land Use Plan for Warren County, Base Studies for Warren County, Fringe Area Study for Bowling Green, Kentucky, Initial Housing Element Report, Community Facilities Plan Warren County, Kentucky, Street Naming and Property Numbering Study, Capital Improvements Budget 1969-1975

Plans in process - Subdivision Regulations - Revision, Zoning Ordinance - Revision; Detailed Land Use Plan - Model City Target Area

Codes Adopted - Housing, building, Kentucky standards of safety, electrical, state plumbing code

Other programs - Preparation of three open space project applications, Implementation of House Numbering and Street Naming Program, Beautification Program

## Safety

<u>Police</u>	<u>Bowling Green</u>	<u>Warren County</u>
Total staff	78	8
Radio-patrol cars	13	6
Other equipment	2 radio-equipped motorcycles	standard

## Fire

American Insurance

Association Fire Rating 7

Full-time staff 83

Number of stations 3

Equipment:

1,000 gpm pumpers 3

750 gpm pumpers 3

1,125 gpm pumpers 1 (on order)

ladder-rescue trucks 2

other vehicles 4



Rescue Service

Warren County Rescue Squad

Number of volunteers - 27

Equipment - generator, lights, hand tools, ambulance

Sanitation

Bowling Green

Type service	municipal
Cost:	
residential	\$2.10 monthly
business	\$1.50 per cubic yard (container system)
Collection frequency:	
residential	once weekly
business	daily
Disposal method	land fill

## HEALTH

### Hospitals

<u>General Hospital</u>	<u>Location</u>	<u>Beds</u>
Bowling Green-Warren County Hospital	Bowling Green	275 hospital beds 23 extended care facility beds 24 bassinets
General hospital facilities - 5 operating rooms, 5 emergency rooms, 4-bed coronary care unit, physical therapy department, electro-cardiograph, X-ray facilities, coffee shop for visitors		
Medical staff - 49 doctors, 67 registered nurses, 142 aides, 29 licensed practical nurses, 238 other employees		
Other - Lion's Handicapped School; Mental Health-Mental Retardation Center; Out-Patient Clinic - Speech Therapy and Physical Therapy - Commission for Handicapped Children		

### Nursing Homes

	<u>Number</u>	<u>Beds</u>
Extended care homes	4	207
Personal care homes	5	148

### Public Health

Facility - Warren County Health Department

Staff - One health officer, one pediatrician, six public health nurses, two sanitarians, three clerks, one clerk registrar, one part-time nutritionist, one venereal disease inspector, one administrative assistant, two part-time lab technicians

Budget 1970-71 - \$136,133



## OTHER LOCAL FACILITIES

### Communications

Telephone - South Central Bell Telephone Company

Services - All standard services, mobile telephone service, teletype, touch tone telephone

Telegraph - Western Union Telegraph Company

Services - Messenger or telephone delivery service

Postal - U. S. Post Office

Class - First

Mail received - 32 times daily

Mail dispatched - 32 times daily

Newspapers - Park City Daily News

Daily and circulation - 17,297

Other papers received from - Louisville, Kentucky, and Nashville, Tennessee

Radio - WBGN-AM; WKCT-AM; WLBJ-AM-FM

Stations received from - Nashville, Tennessee, and Russellville, Kentucky

Television - WLTV

Reception from - Nashville, Tennessee

Kentucky Educational Television - Bowling Green transmitter, Channel 53

### Library Services

Public Libraries - Bowling Green Public Library

Size collection - Approximately 40,000 volumes

Circulation, 1969-70 - 89,702; 41,049 (bookmobile)

Services - Bookmobile, reference, children's story hour, 50 periodicals, records

Private Libraries - Five libraries on Western Kentucky University Campus

Size collection - combined total - 300,000 volumes

Special collections - Rare books, Rice collection, Western Kentucky folklore collection, Courtney-Ellis river collection, manuscripts

Services - recordings, microfilm, microforms, newspapers, magazines, clippings, scrapbooks, tapes, sheet music, Kentucky Statutes

### Religious Institutions

There are over 65 churches representing 30 different denominations.

### Financial Institutions

<u>Bank</u>	<u>Statement as of June 30, 1970</u>	
	<u>Assets</u>	<u>Deposits</u>
Citizens National Bank of Bowling Green	\$34,148,818.66	\$31,027,916.76
Bowling Green Bank and Trust Company	23,894,544.97	14,482,576.07
American National Bank and Trust Company	38,032,136.01	34,274,576.58
<u>Savings and Loan Associations</u>	<u>Assets</u>	<u>Shared Accounts</u>
First Federal Savings and Loan Association	\$39,332,909.72	\$35,627,334.53
Fidelity Federal Savings & Loan Association	5,079,528.56	4,889,900.15

### Hotels and Motels\*

Total number - 23  
Units - 1,162

### Clubs and Organizations

Business and Civic - Bar Association, Dental Association, Bowling Green Realtors, Chamber of Commerce, Civitan, Community Greeters, Farm Bureau, Humane Society, Jaycees, Kiwanis, Lions, Professional Engineers, Optimist, Rotary, Association of Insurance Agents, Medical Society, Woodsmen of the World

Fraternal - American Legion, Shrine, Elks, FOP, IOOF, Knights of Columbus, Lions, Masonic, Moose, VFW

Youth - Boy Scouts, Boy's Club, Girl Scouts, two Girl's Clubs

---

\*Accommodations in the Bowling Green area.



Women's - Altrusa Club, American Association of University Women, American Business Women's Association, American Legion Auxiliary, Garden Club, Junior Woman's Club, Business and Professional Women's Club, Civitana, Daughters of American Revolution, Jaycee-ettes, Mothers Club, Opti-Mrs., Eastern Star, PEO Sisterhood, Rebekahs, American War Mothers, Welcome Wagon, Lioness

Other - Bowling Green Community Concert Association, Bowling Green Rose Society, Current Events Club, Homes and Neighborhood Development, Retired Civil Employees, Quarterback Club, Southern Kentucky Antique Club, Twentieth Century Club, Historical Society

## RECREATION

### Local

	<u>Bowling Green</u>	<u>Warren County</u>
Public Recreation Facilities		
Supervised Program -	Bowling Green Parks and Recreation Department	Warren County Parks and Recreation
Parks -	6	
Playgrounds -	6 (schools)	16
Golf courses -	2 (9-hole)	
Tennis courts -	6	5
Baseball diamonds -	13	12
Football fields -		8
Other -	Historic House Development, 2 Civil War landmarks	Picnic facilities and community center located at Richards- ville
Private Recreation Facilities		
Country Clubs -	2	
Golf courses -	2 (18-hole)	
Swimming pools -	2	
Movie theaters -	3 indoor, 2 drive-in	
Bowling lanes -	1	
Other -	Skating rink (under construction), recreation center	
Tourist Attractions		
Beech Bend Park		
The Kentucky Building, Western Kentucky University		
Cultural Events		
Bowling Green-Warren County Community Concert Series		
Western Kentucky University Art Gallery		
Municipal Park Band, Rodes-Helm and University Lecture Series		

### Area (Within 35 miles)

Barren River Reservoir State Park  
 Mammoth Cave National Park  
 Diamond Caverns  
 Park Mammoth Resort  
 Crystal Onyx Cave





BOWLING GREEN COUNTRY CLUB



INDIAN HILLS COUNTRY CLUB

# AGRICULTURE - NATURAL RESOURCES - CLIMATE

## Agriculture 13/

	<u>Warren County</u>	<u>Labor Market Area</u>
Total land area (acres)	349,440	1,884,800
Percent of area in farm land	86.6	77.0
Number of farms	2,616	12,845
Average size of farms (acres)	115.6	113.0
1964 value of all farm products	\$12,161,841	\$56,568,636
Value per farm	4,649	4,404
Total crop sales	4,926,880	27,315,692
Total livestock & livestock products	7,232,126	29,235,398
1968 agricultural production included:		
Burley tobacco (lbs.)	5,570,000	27,709,000
Corn (bu.)	1,775,000	7,841,000
Cattle and calves (number)	63,500	264,900
Hogs and pigs (number)	38,900	161,100
Milk production, 1967 (lbs.)	70,080,000	352,430,000

## Natural Resources

Principal mineral resources	Limestone
Other mineral resources	Petroleum
Acres of commercial forest land	90,200
Most abundant tree species	Red oak, white oak, hickory, yellow poplar, beech, hard maple, ash

## Climate 14/

	<u>Warren County</u>
Temperature	
Annual mean (30-year record)	60.0 degrees
Average annual 1969	58.6 degrees
Record highest July, 1966 (4-year record)	103.0 degrees
Record lowest January, 1966 (4-year record)	- 9.0 degrees
Seasonal heating degree-days (30-year record)	3,578
Precipitation	
Mean annual total (30-year record)	45.14 inches
Mean annual snow and sleet (28-year record)	11.80 inches
Total precipitation 1969	42.27 inches
Mean number days precipitation (28-year record) (.01 inch or more)	118
Average number days thunderstorms (28-year record)	55
Prevailing winds (22-year record)	south



## HISTORY

Warren County was the twenty-fourth county formed in Kentucky. Dating from 1796, it was taken from Logan County and later gave land to help form Barren, Allen, Simpson, and Edmonson Counties. The county was named for General Joseph Warren, a hero of the Battle of Bunker Hill, who practiced medicine after graduating from Harvard, joined Sam Adams in opposition to British policies as incorporated in the Stamp Act of 1765, and dispatched Paul Revere and William Dawes on April 18, 1775, to warn the patriots that the British were marching toward Lexington and Concord.

The Barren River flows through Warren County in a northwesterly direction to its confluence with Green River on the Butler County line. Covering 546 square miles, the county's surface is gently rolling, and its fertile soil is based on a red clay and limestone foundation.

The Civil War touched Bowling Green and Warren County in a way that no other part of Kentucky experienced. In 1861, Confederates occupied Bowling Green. One month later, the State of Kentucky was admitted to the Southern Confederacy by an act of its Congress sitting in Richmond. In 1862, Bowling Green was designated the Confederate Capitol of Kentucky. Unfortunately for the Confederates, their forces were defeated at Perryville and the Confederate troops were forced to leave Kentucky. The Federal soldiers then moved into Bowling Green and completed the fortifications started by the Confederates.

Western Kentucky University was founded in Bowling Green by act of the 1906 Kentucky General Assembly. The school attained university status in 1966.

Historical events of note included:

- 1775 - First visitors came from the early settlement at Harrodsburg, Kentucky.
- 1780 - The Bowling Green settlement was established by Robert and George Moore.

Names worthy of remembrance are:

- General Braxton Bragg - Commander of Confederate forces in Kentucky
- Joseph Underwood - County Judge, U. S. Representative, U. S. Senator

Warner Underwood - served two terms in Congress  
John C. Underwood - Mayor, Lieutenant Governor  
William H. Natcher - Member of U. S. Congress  
Captain Thomas H. Hines - credited with the formation of the plan  
by which General John Morgan escaped from the Ohio State  
Penitentiary during the Civil War  
Henry Grider - served in the House of Representatives in Frankfort  
and in the United States Congress



## SOURCES OF INFORMATION

- 1/ U.S. Department of Commerce, Bureau of the Census, Census of Population, 1950, 1960, 1970 (Preliminary figures). Bowling Green-Warren County Chamber of Commerce, Bowling Green, Kentucky.
- 2/ Kentucky Department of Economic Security, Division of Research and Statistics.
- 3/ Kentucky Department of Economic Security, Number of Workers in Manufacturing Industries Covered by Kentucky Unemployment Insurance Law Classified by Industry and County, September 1959, September 1969.
- 4/ Kentucky Department of Commerce.
- 5/ Kentucky Department of Economic Security, Division of Employment Services, Bowling Green Office.
- 6/ Kentucky Department of Economic Security, Kentucky Labor Supply Estimates by County, January 1970.
- 7/ Kentucky Department of Commerce, Future Labor Supply by 1976.
- 8/ University of Kentucky, Office of Development Services and Business Research, Total Personal Income for Kentucky.
- 9/ University of Kentucky, Office of Development Services and Business Research, Per Capita Income in Kentucky.
- 10/ Louisville & Nashville Railroad, Louisville, Kentucky.
- 11/ Skaggs Transfer, Inc., Louisville, Kentucky.
- 12/ Tax Commissioner, Bowling Green, Kentucky.
- 13/ U.S. Department of Commerce, Bureau of the Census, Census of Agriculture, 1964. U.S. Department of Agriculture and Kentucky Department of Agriculture, Kentucky Agricultural Statistics, 1969.
- 14/ U.S. Department of Commerce, Environmental Science Services Administration, Climatological Data, 1969.

All other information was obtained from governmental offices, local businesses and organizations.

This copy has been prepared by the Kentucky Department of Commerce,  
Division of Research and Planning, and the cost of printing paid from  
state funds.