

1995

## Industrial Resources: Webster County

Kentucky Library Research Collections  
Western Kentucky University, [spcol@wku.edu](mailto:spcol@wku.edu)

Follow this and additional works at: [https://digitalcommons.wku.edu/webster\\_cty](https://digitalcommons.wku.edu/webster_cty)



Part of the [Business Administration, Management, and Operations Commons](#), [Growth and Development Commons](#), and the [Infrastructure Commons](#)

---

### Recommended Citation

Kentucky Library Research Collections, "Industrial Resources: Webster County" (1995). *Webster County*. Paper 6.  
[https://digitalcommons.wku.edu/webster\\_cty/6](https://digitalcommons.wku.edu/webster_cty/6)

This Report is brought to you for free and open access by TopSCHOLAR®. It has been accepted for inclusion in Webster County by an authorized administrator of TopSCHOLAR®. For more information, please contact [topscholar@wku.edu](mailto:topscholar@wku.edu).

IR  
904

Webster Co

# Kentucky

## Resources For Economic Development

Albany  
Barbourville  
Ballard County  
Bardstown • Booneville      Berea  
Bowling Green • Boyd & Greenup Counties  
Bracken County • Brandenburg • Breckinridge  
Brownsville • Bullitt County • Burkesville • Cadiz  
Campbellsville • Campton • Carlisle • Carlisle County  
Carrollton • Cave City • Clinton • Columbia • Corbin • Cynthia  
Corydon • Dawson Springs • Eumott • Elizabethtown • Estill County  
Elliott County • Falmouth & Butler • Flemingsburg • Frankfort • Franklin  
Frenchburg • Fulton County • Gallatin County • Georgetown • Grant County • Greensburg  
Grayson & Olive Hill • Glasgow • Hancock County • Harlan County • Harrodsburg • Hart County  
Hazard • Henderson • Henry County • Hodgenville • Hopkinsville • Christian County • Jackson County  
Jackson • Knott County • LaGrange & Buckner • Lancaster • Lawrenceburg • Lebanon • Leitchfield  
Grayson County • Letcher County • Lexington • Liberty-Casey County • Logan County • Louisville  
London • Louisa • Lyon County • Madisonville & Earlinton • Manchester • Marshall County • Mayfield  
Maysville • McCreary County • Marion • McLean County • Middlesboro & Pineville • Monticello • Morehead  
Morgantown • Mt. Sterling • Mt. Vernon • Muhlenberg County • Murray • Nicholasville • Northern Kentucky  
Ohio County • Owensboro • Owenton • Owingsville • Paducah • Paintsville • Paris • Pike County • Powell  
Prestonsburg • Princeton • Radcliff • Richmond • Russell County • Scottsville • Shelbyville • Somerset  
Springfield • Stamping Ground • Stafford-Lincoln County • Tazewellville & Campbell • Taylorsville  
Todd County • Union County • Vanceburg • Versailles • Wakefield • West Liberty • Williamsburg  
Winchester, Kentucky

# Kentucky

## **Resources For Economic Development**

### **Webster County**



Prepared by  
The Kentucky Cabinet for Economic Development  
Division of Research  
in cooperation with  
Webster County Economic Development Corporation

1995

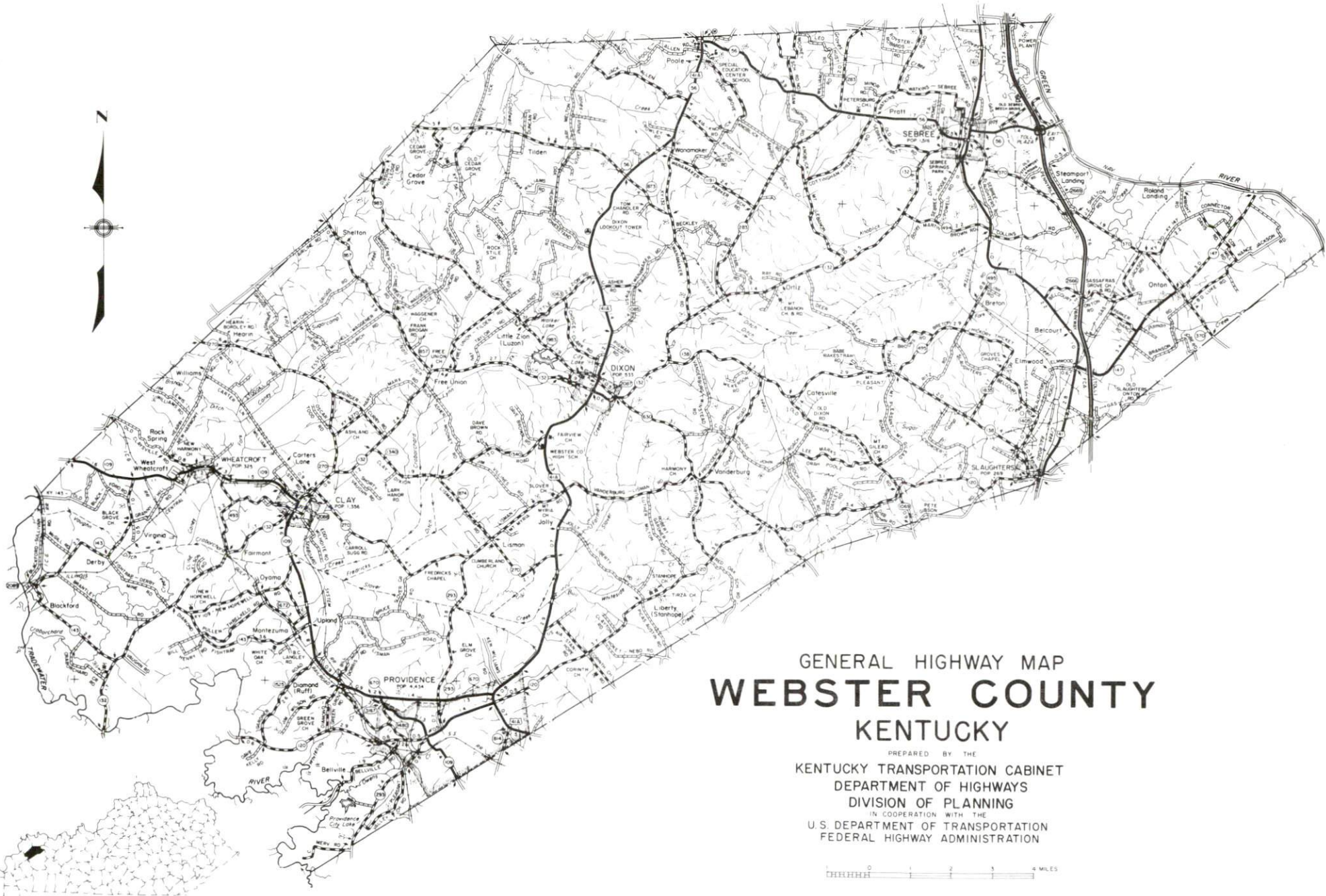
Division Director -Rene' True; program manager - Keith Roberts; research - Debbie Kimbrough; clerical - Wanda Sharp; graphics - Robert Owens. Cost of printing paid from state funds.

## TABLE OF CONTENTS

<u>Chapter</u>	<u>Page</u>
WEBSTER COUNTY, KENTUCKY-A RESOURCE PROFILE.....	1
THE LABOR MARKET STATISTICS.....	2
Labor Market Area Map.....	2
Population.....	3
Population Projections.....	3
Estimated Labor Supply.....	3
Labor Force Characteristics of Residents, 1994.....	4
Selected Components of Nonagricultural Employment, by Place of Work, 1994.....	5
Per Capita Personal Income.....	6
Average Placement Wages.....	7
Average Weekly Wages of Workers Covered by Unemployment Insurance 1993 - Bar Chart.....	8
Average Weekly Wages by Industry, by Place of Work, 1993.....	9
EXISTING INDUSTRY.....	10
Webster County Manufacturing Firms, Their Products and Employment.....	10
Recent Industrial Developments.....	11
Labor Organizations in Manufacturing Firms.....	11
Selected Industrial Services.....	12
TRANSPORTATION.....	13
Highways.....	13
Truck Service.....	13
Selected Market Location Map.....	14
Rail.....	15
Air.....	15
Water.....	15
UTILITIES.....	16
Electricity.....	16
Natural Gas.....	17
Public Water Supply.....	17
Sewerage.....	19
CLIMATE.....	20

<u>Chapter</u>	<u>Page</u>
LOCAL GOVERNMENT.....	21
Structure.....	21
Planning and Zoning.....	21
Local Fees and Licenses.....	21
State and Local Property Taxes.....	22
EDUCATION.....	23
Public Schools.....	23
Area Colleges and Universities.....	23
Vocational Training.....	24
OTHER LOCAL FACILITIES.....	26
Local Medical Personnel.....	26
Hospitals.....	26
Other Medical Facilities and Services.....	26
Banks and Savings & Loan Associations.....	26
Newspapers.....	27
Telephone Service.....	27
RECREATION.....	28





GENERAL HIGHWAY MAP  
**WEBSTER COUNTY**  
KENTUCKY

PREPARED BY THE  
KENTUCKY TRANSPORTATION CABINET  
DEPARTMENT OF HIGHWAYS  
DIVISION OF PLANNING  
IN COOPERATION WITH THE  
U.S. DEPARTMENT OF TRANSPORTATION  
FEDERAL HIGHWAY ADMINISTRATION

0 1 2 3 4 MILES

## WEBSTER COUNTY, KENTUCKY - A RESOURCE PROFILE

Webster County, with a land area of 334 square miles, is located within the Western Kentucky Coal Field region. The Green River forms the northeastern boundary of the county, while the Tradewater River forms the county's southwestern boundary. Webster County had an estimated 1992 population of 13,710.

Dixon, the county seat of Webster County, had an estimated 1992 population of 614. Dixon is located 128 miles northwest of Nashville, Tennessee; 148 miles southwest of Louisville, Kentucky; and 203 miles southeast of St. Louis, Missouri. Clay, with an estimated 1992 population of 1,172, is located in the western portion of Webster County. Providence had an estimated 1992 population of 4,064. Sebree, located in the northeastern portion of Webster County near the Green River, had an estimated 1992 population of 1,474. Slaughters had an estimated 1992 population of 229, while Wheatcroft had an estimated population of 224 for the same year.

**The Economic Framework** - The total number of Webster County residents employed in 1994 averaged 5,401. Manufacturing firms in the county reported 861 employees; wholesale and retail trade provided 616 jobs; 383 people were employed in service occupations; state and local government accounted for 656 employees; contract construction firms provided 103 jobs; and 1,353 people were employed by mining and quarrying operations.

**Labor Supply** - There is a current estimated labor supply of 9,547 persons available for industrial jobs in the labor market area. In addition, from 1996 through 2000, 11,620 young persons in the area will become 18 years of age and potentially available for industrial jobs.

**Transportation** - Major highways serving Webster County include the Pennyriple Parkway, U.S. 41, U.S. 41 Alternate, and Kentucky 109. Twenty-three trucking companies serve Webster County. CSX Transportation provides rail service to Providence and Sebree while Western Kentucky Railway serves Providence. The Evansville Regional Airport, 39 miles north of Dixon, provides the nearest scheduled commercial airline service. The Providence-Webster County Airport maintains a 3,800-foot paved runway designed to accommodate small aircraft.

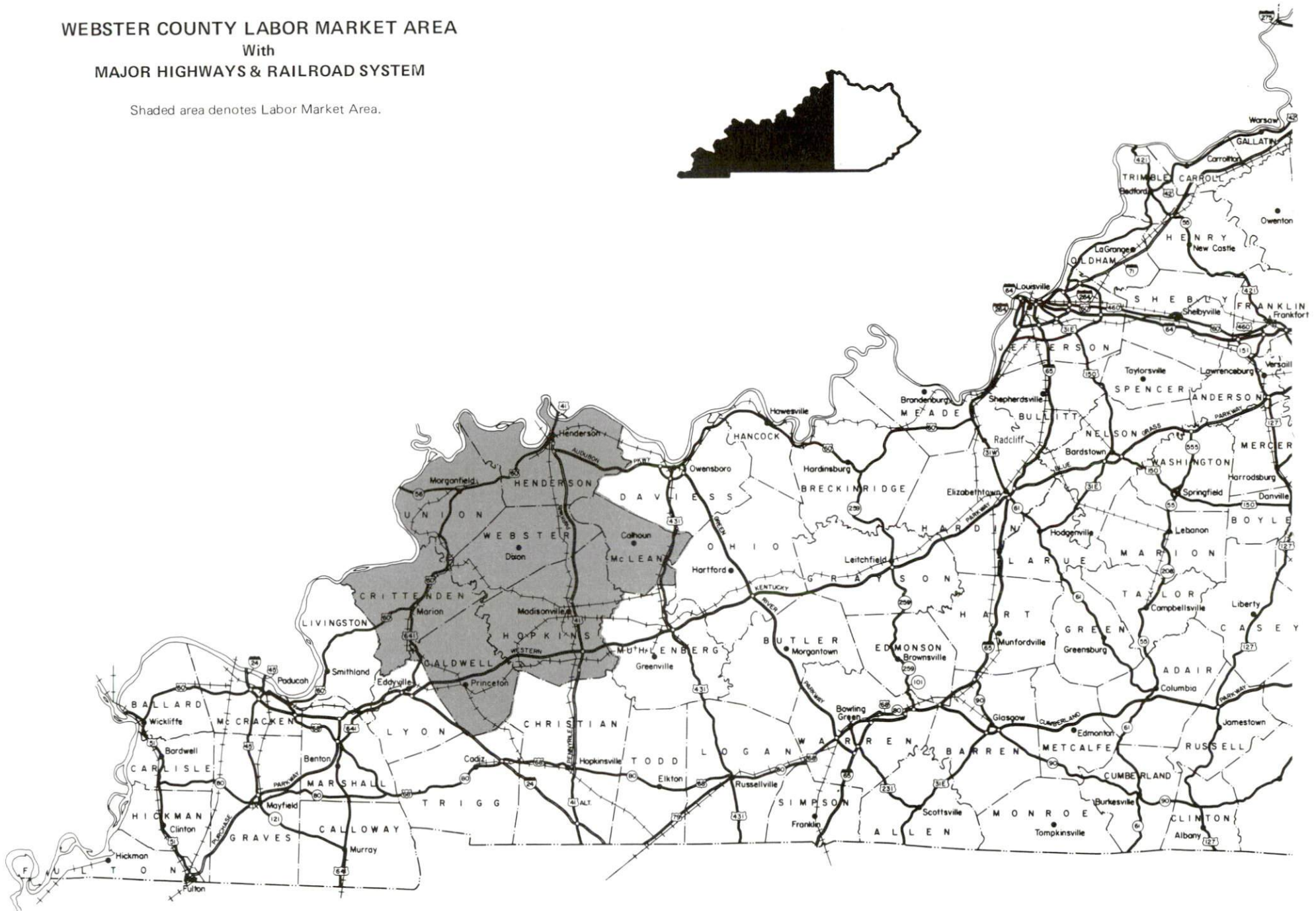
**Power and Fuel** - Providence Municipal Utilities provides electric service to Providence. Kentucky Utilities Company provides electric power to Clay, Dixon, Sebree, and parts of Webster County. Webster County is also served by Green River Electric Corporation and Henderson-Union Electric Cooperative. Natural gas service is provided to Clay by Clay Gas System, to Providence by Providence Municipal Utilities, and to Sebree by Western Kentucky Gas Company.

**Education** - The Providence Independent School System provides primary and secondary education to Providence. Clay, Dixon, Sebree, and unincorporated Webster County are served by the Webster County School System. Eight institutions of higher learning are located within 60 miles of Dixon. The Webster County Area Technology Center, in Dixon, and the Madisonville Regional Technology Center and the Madisonville Health Technology Center both 24 miles southeast of Dixon, provide vocational training facilities for the area.



WEBSTER COUNTY LABOR MARKET AREA  
With  
MAJOR HIGHWAYS & RAILROAD SYSTEM

Shaded area denotes Labor Market Area.



## LABOR MARKET STATISTICS

The Webster County Labor Market Area includes Webster County and the adjoining Kentucky counties of Caldwell, Crittenden, Henderson, Hopkins, McLean, and Union.

### POPULATION

	<u>1992*</u>	<u>1990</u>	<u>1980</u>	<u>1970</u>
Labor Market Area	152,313	151,738	152,446	134,096
Clay	1,172	1,173	1,356	1,426
Dixon	614	552	533	572
Providence	4,064	4,123	4,434	4,270
Sebree	1,474	1,510	1,516	1,092
Slaughters	229	235	269	276
Wheatcroft	224	206	325	229
Webster County	13,710	13,955	14,832	13,282

\*Population estimates.

Source: U.S. Department of Commerce, Bureau of the Census.

### POPULATION PROJECTIONS

	<u>1995</u>	<u>2000</u>	<u>2010</u>	<u>2020</u>
Labor Market Area	153,547	157,199	161,967	164,289
Webster County	13,577	13,774	14,035	14,075

Note: Population projections are from High Growth Series forecast.

Source: University of Louisville, Urban Studies Center, State Data Center.

### ESTIMATED LABOR SUPPLY

	<u>Current</u>			<u>Future</u>
	<u>Total</u>	<u>Unemployed</u>	<u>Not in Labor Force</u>	<u>Becoming 18 years of age 1996 thru 2000</u>
Labor Market Area*	9,547	4,221	5,327	11,620
Webster County	1,506	347	1,159	1,105

\* Additional workers may be drawn from other nearby counties.

Note: Unemployed - persons unemployed and actively seeking work; Not in Labor Force - represents the number of persons who would enter the labor force if suitable employment were available (based on the assumption that persons in Kentucky would like to participate in the labor force in the same proportion that they do nationally). Underemployed persons (employed only 14 to 26 weeks during the year) are no longer included in labor surplus estimates.

Sources: Kentucky Cabinet for Human Resources, Kentucky Labor Surplus Estimates by County, 1994. Kentucky Cabinet for Economic Development, Future Labor Supply Becoming 18 Years of Age, 1996 thru 2000.

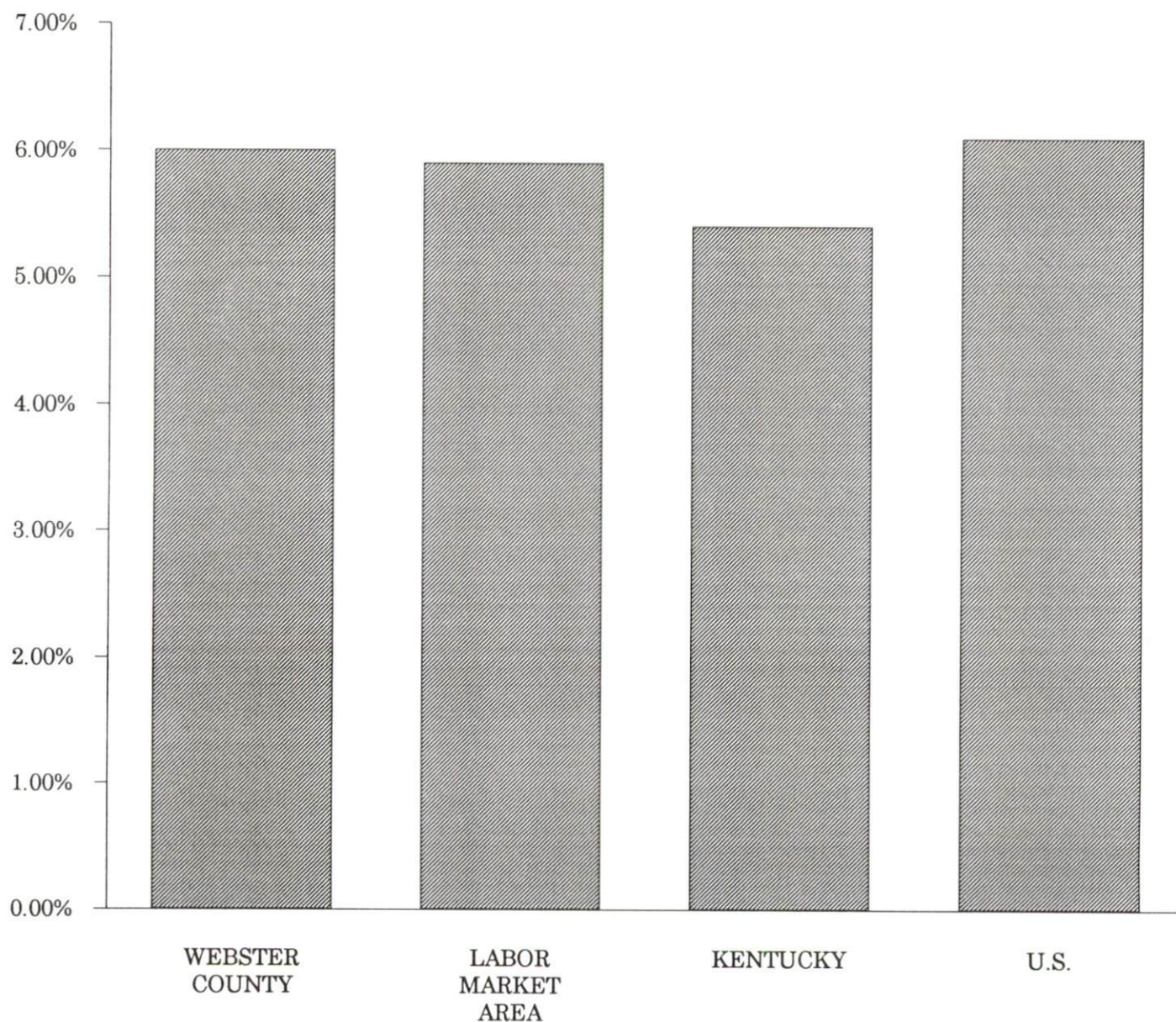


# LABOR FORCE CHARACTERISTICS OF RESIDENTS, 1994

	<u>Webster County</u>	<u>Labor Market Area</u>
Civilian Labor Force	5,748	71,738
Employment	5,401	67,517
Unemployment	347	4,221
Rate of Unemployment (%)	6.0	5.9

**Source:** Kentucky Cabinet for Human Resources, Kentucky Labor Force Estimates, Annual Averages 1994.

## UNEMPLOYMENT RATES 1994

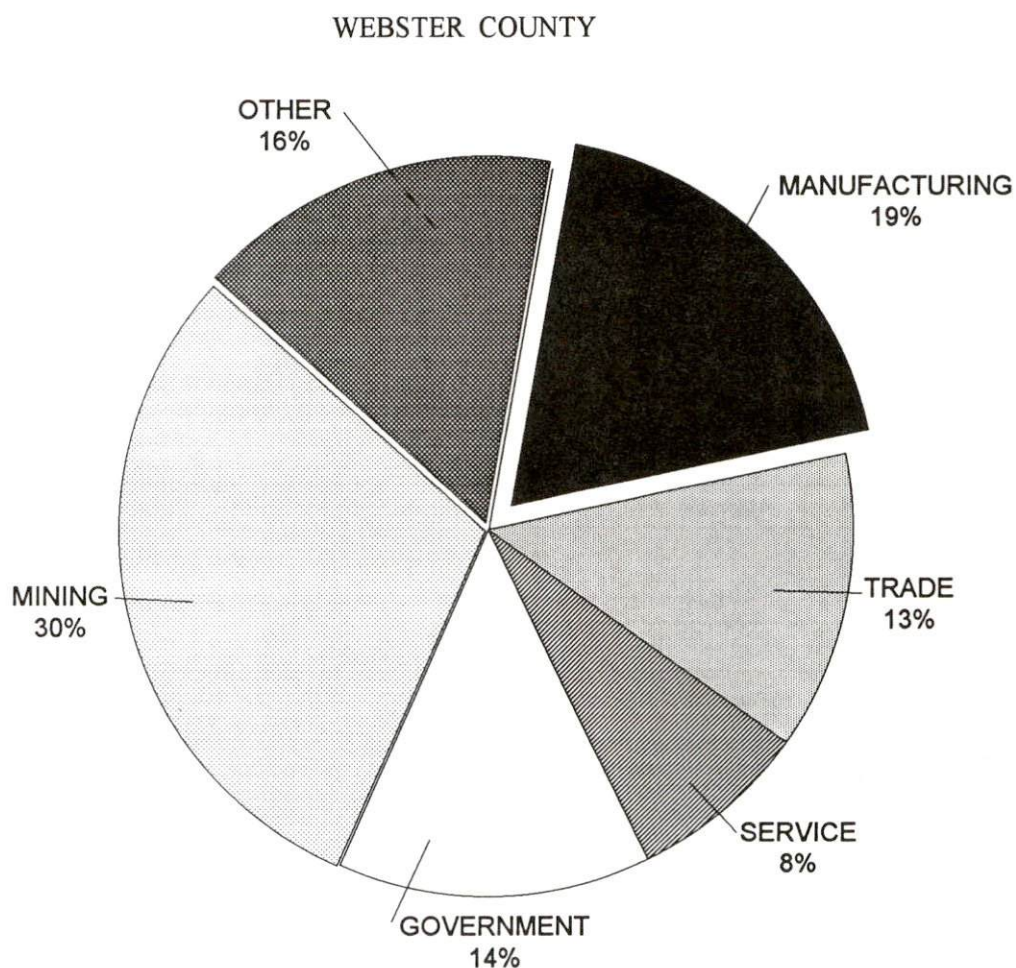


SELECTED COMPONENTS OF NONAGRICULTURAL EMPLOYMENT  
BY PLACE OF WORK, 1994

	<u>Webster County</u>	<u>Labor Market Area</u>
All Industries (total)	4,633	55,616
Manufacturing	861	13,342
Wholesale & Retail Trade	616	11,723
Services	383	12,355
State/Local Government	656	7,387
Contract Construction	103	1,869
Mining & Quarrying	1,353	4,340

**Note:** Excludes domestic workers, railway workers, certain nonprofit corporations, majority of federal government workers, and self-employed workers.

**Source:** Kentucky Cabinet for Human Resources, Average Monthly Workers Covered by Kentucky Unemployment Insurance Law, 1994.



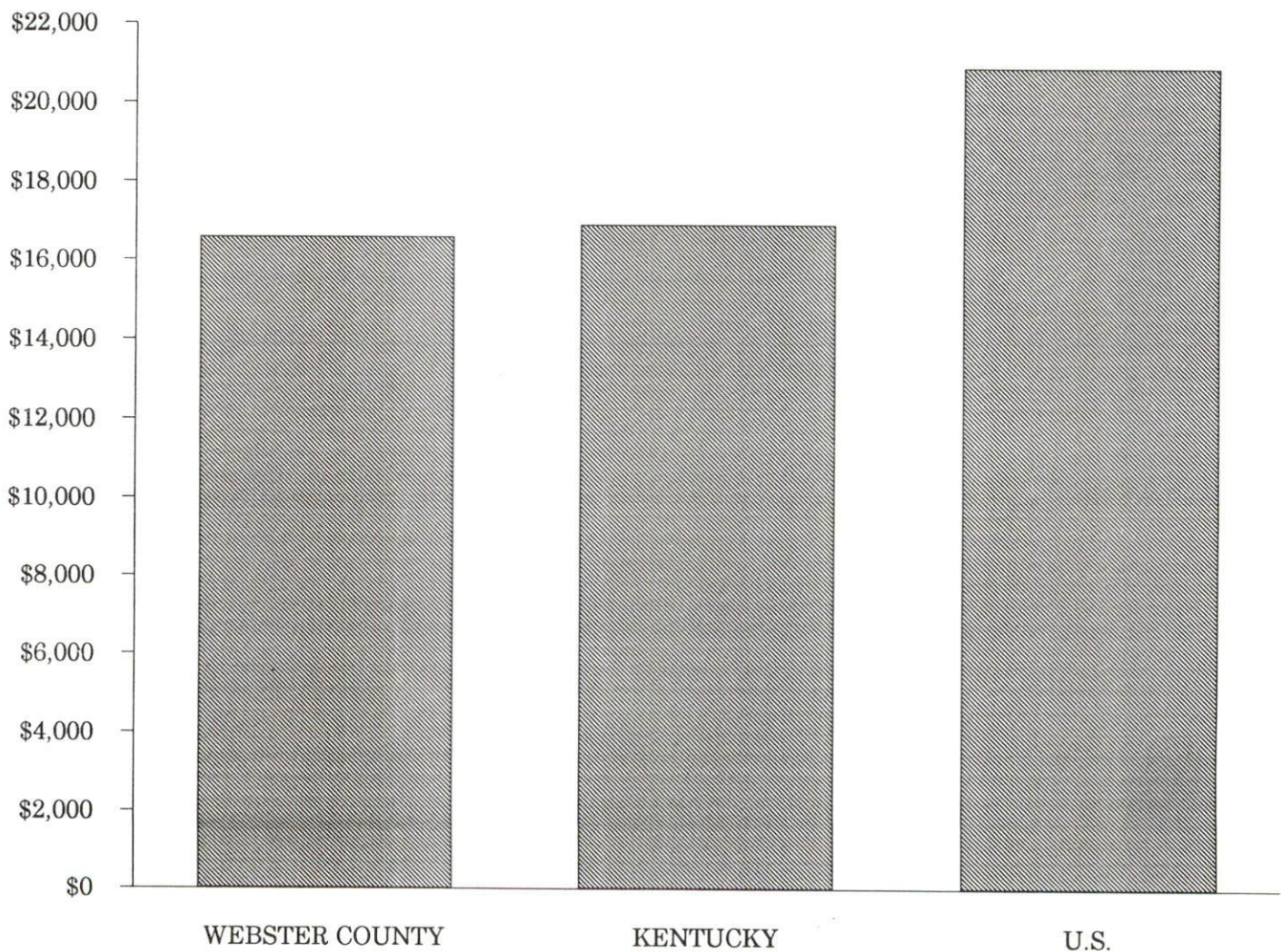


# PER CAPITA PERSONAL INCOME

Area	1989	1993	Percent Change
Webster County	\$14,238	\$16,589	16.5
Labor Market Area Range	\$10,841 - \$15,011	\$13,070 - \$17,461	-
Kentucky	\$13,756	\$16,889	22.8
U.S.	\$17,690	\$20,800	17.6

**Source:** U.S. Department of Commerce, Bureau of Economic Analysis, Regional Economic Information System.

## PER CAPITA PERSONAL INCOME 1993



## AVERAGE PLACEMENT WAGES

---

Webster County is served by the Henderson local office of the Kentucky Department for Employment Services. The focus of the following data is on job placements made by the Henderson local office and may therefore be used as an indicator of the wages which employers in the area pay new employees. During the twelve months which ended on June 30, 1995, the local employment office filled 2,296 job openings in various occupational categories. The average hourly wage for selected occupational categories were:

<u>OCCUPATIONAL CATEGORY</u>	<u>NUMBER OF PLACEMENTS</u>	<u>AVERAGE WAGE(\$)</u>
All Occupations	2,296	6.28
Clerical	153	5.64
Sales	42	5.18
Services (excluding domestic)	407	5.21
Agricultural, Fishery, Forestry, etc.	19	4.82
Processing	548	5.52
Machine Trades	593	7.89
Bench Work	100	5.93
Structural	146	6.93
Motor Freight/ Transportation	77	6.25
Packaging and Materials Handling	146	5.75
Other	5	9.41

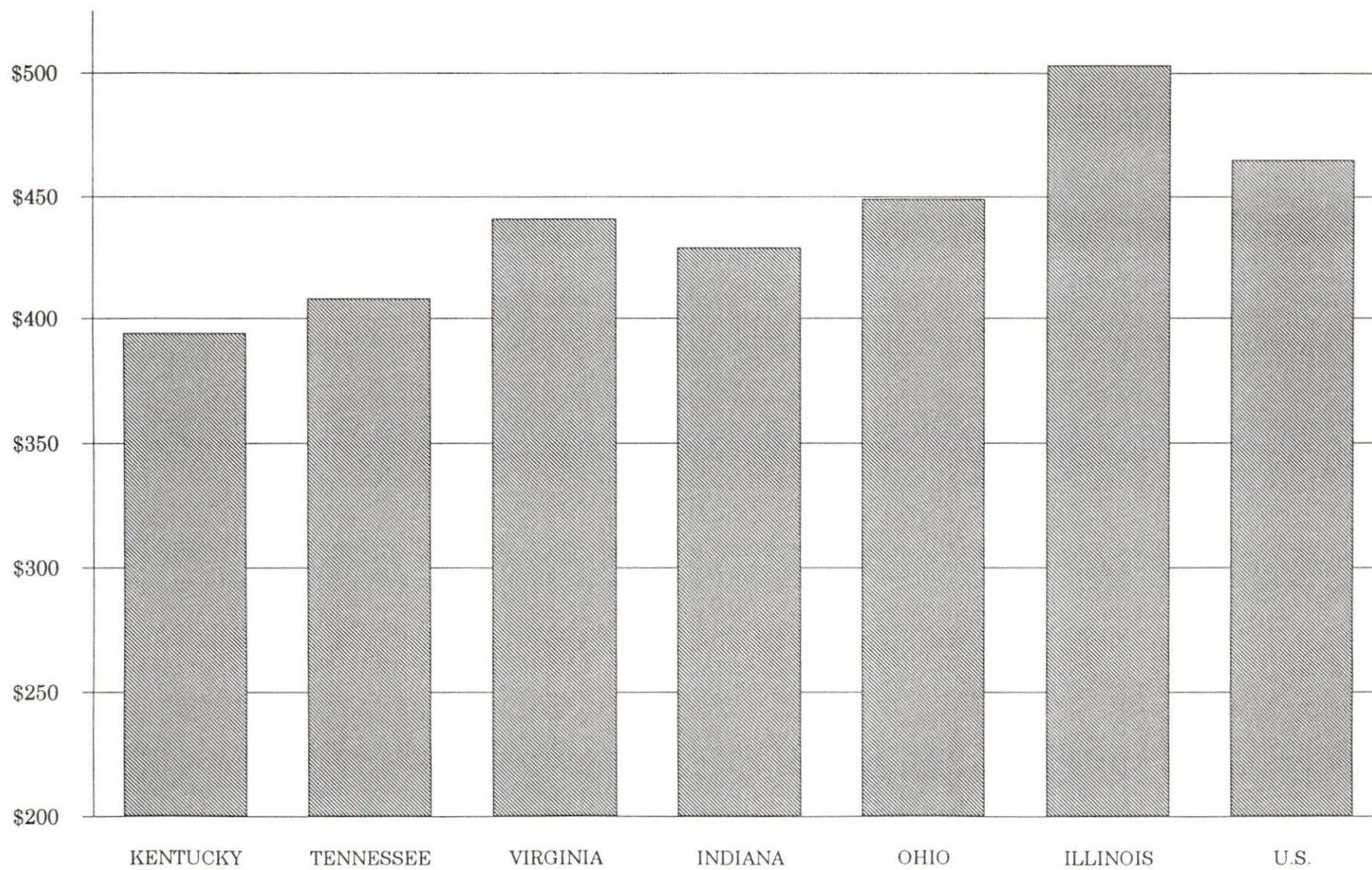
The Henderson local office also serves Henderson and Union Counties. The above occupational categories are taken from the Dictionary of Occupational Titles published by the U.S. Department of Labor.

---

**Source:** Kentucky Cabinet for Human Resources, Department for Employment Services.



AVERAGE WEEKLY WAGES OF WORKERS COVERED BY  
UNEMPLOYMENT INSURANCE - 1991



AVERAGE WEEKLY WAGES BY INDUSTRY  
BY PLACE OF WORK, 1993\*

	<u>Webster County</u>	<u>Kentucky (Statewide)</u>	<u>Tennessee</u>	<u>Virginia</u>
All Industries	\$543.62	\$421.30	\$444.00	\$473.00
Mining & Quarrying	1,027.77	691.01	605.00	684.00
Contract Construction	325.26	440.47	467.00	464.00
Manufacturing	330.42	541.18	522.00	543.00
Transportation, Communications & Public Utilities	652.02	567.94	572.00	648.00
Wholesale & Retail Trade	244.84	287.24	N/A	N/A
Finance, Insurance & Real Estate	311.59	449.89	495.00	523.00
Services	219.81	350.41	394.00	455.00
State/Local Government	356.04	413.84	N/A	N/A
	<u>Indiana</u>	<u>Ohio</u>	<u>Illinois</u>	<u>U. S.</u>
All Industries	\$460.00	\$481.00	\$542.00	\$499.00
Mining & Quarrying	757.00	645.00	738.00	816.00
Contract Construction	509.00	534.00	658.00	530.00
Manufacturing	629.00	670.00	667.00	623.00
Transportation, Communications & Public Utilities	561.00	600.00	682.00	643.00
Wholesale & Retail Trade	N/A	N/A	N/A	N/A
Finance, Insurance & Real Estate	527.00	568.00	748.00	693.00
Services	391.00	422.00	494.00	475.00
State/Local Government	N/A	N/A	N/A	N/A

\* Wages for U.S. and surrounding states rounded to nearest dollar.

N/A Not Available.

**Note:** The average weekly wage for each category includes the salaries and wages of all persons working for that type business. For example, the manufacturing category includes both production workers and administrative personnel. Excludes domestic workers, railway workers, certain nonprofit corporations, majority of federal government workers, and self-employed workers.

**Source:** Kentucky Cabinet for Human Resources, Average Weekly Wages of Workers Covered by Kentucky Unemployment Insurance Law, 1993. U.S. Department of Labor, Bureau of Labor Statistics, Employment and Wages, Annual Averages, 1993, October, 1994.



## EXISTING INDUSTRY

### WEBSTER COUNTY MANUFACTURING FIRMS, THEIR PRODUCTS AND EMPLOYMENT

<u>Firm</u> <u>(Establishment date)</u>	<u>Product</u>	<u>1994</u> <u>Average Employment</u>
<b>Clay</b>		
Clay Machine Works, Inc. (1967)	Machine shop, cylinder parts, mining and farm machine parts	16
Crop Production Services (1964)	Fertilizer blending, chemicals	4
Custom Engineering, Inc. (1977)	Supply cars (mining), wear rings, sprockets	30
Fairmont Wood Treating Company, Inc. (1985)	Wood timbers	8
<b>Dixon</b>		
Collins Engineering (1989)	Plastic injection molds/dies/tooling	9
Dapco, Inc. (1989)	Personnel carriers (mining), washers (mining), low framing for coal mining industry	5
Pioneer Plastics (1981)	Injection molded plastics for refrigerators, plastic packaging, molded parts for restaurants	72
<b>Providence</b>		
Carhartt, Inc. (1981)	Work clothing, men's outerwear	200
Hoov-R-Line (1974)	Plastic plumbing parts	160
Northern Printing & Office Supplies (1973)	Job printing	3
Providence Machine, Inc. (1956)	Machine shop, metal fabrication, mining machinery parts	22
Quality Fabrication, Inc. (1982)	Metal fabrication machines	26
The Journal-Enterprise, Inc. (1902)	Newspaper	5
Tri-Valley Plastic Molders (1989)	Plastic toys, plastic car parts and appliance parts	46
West Kentucky Steel Construction (1958)	Steel fabrication, dragline, backhole buckets	25

(Continued)

<u>Firm</u> <u>(Establishment date)</u>	<u>Product</u>	<u>1994</u> <u>Average Employment</u>
<b>Sebree</b>		
Carhartt Midwest, Inc. Sebree Division (1973)	Men's work clothing and jeans	220
Colonels Corn Products (1989)	Corn chips	10
Scott Manufacturing Company (1973)	Heating and air conditioning fiberglass insulation, foam insulation, weatherstripping	23
Sebree Wholesale (1987)	Lace and craft supplies	30
The Sebree Banner (1892)	Newspaper, commercial printing	4
<b>Wheatcroft</b>		
Da-Co Machine and Steel Fabrication (1977)	Steel fabrication	7

---

**Sources:** Kentucky Cabinet for Economic Development, Division of Research; Webster County Economic Development Corporation.

### RECENT INDUSTRIAL DEVELOPMENTS

A \$1.2 million expansion at Pioneer Plastics in Dixon will be completed in October 1995 and will double production capabilities, add new equipment, and increase employment by 20 percent.

Hudson Foods recently purchased 274 acres in the Robards-Sebree area to construct a poultry processing plant and an adjacent protein rendering plant. A feed mill will be built on 120 acres just north of Sebree and a hatchery built on 45 acres in Beech Grove. Total initial investment will be over \$60 million (this excludes nearly \$72 million in investment by area farmers for construction of chicken houses, growers fee of \$20 million, and purchasing of corn from area farmers of \$45 million per year). Start-up is planned for July 1996 with employment expected to reach 1,200 to 1,500 in five years.

A new 20.45 acre fully developed industrial site is located between the CSX railroad and U.S. 41 at the northern city limits of Sebree.

### LABOR ORGANIZATIONS IN MANUFACTURING FIRMS

<u>Union</u>	<u>Representing workers at:</u>
United Garment Workers of America, AFL-CIO	Carhartt, Inc. (Providence plant) Carhartt Midwest, Inc. Sebree Division
United Steelworkers of America, AFL-CIO-CLC	Hoov-R-Line

## SELECTED INDUSTRIAL SERVICES

---



---

<u>Types of Services</u>	<u>Location</u>	<u>Mileage from Dixon</u>
Custom Plastics Producers	Dixon, Kentucky	-
Electric Motor Repair	Henderson, Kentucky	26
Heat Treating Facilities	Evansville, Indiana	36
Industrial Waste Removal	Madisonville, Kentucky	24
	Henderson, Kentucky	26
Machine Shops, Tool & Die	Clay, Kentucky	9
	Providence, Kentucky	11
Metal Castings	Robards, Kentucky	19
Metal Finishers	Madisonville, Kentucky	24
Metal Service Centers	Madisonville, Kentucky	24
Millwrights & Riggers	Evansville, Indiana	36

---

**Sources:** Kentucky Cabinet for Economic Development, Division of Research.

## TRANSPORTATION

### Highways

Major highways serving Webster County include the Pennyriple Parkway, U.S. 41, U.S. 41 Alternate, Kentucky 56, and Kentucky 109. An interchange with the Pennyriple Parkway, a multi-lane highway, is located two miles east of Sebree. The Pennyriple Parkway provides access to the Audubon Parkway to the north and the Western Kentucky Parkway to the south. Interchanges with the Western Kentucky Parkway are located 16 miles south of Providence via Kentucky 109.

#### HIGHWAY MILES FROM DIXON, KENTUCKY, TO SELECTED MARKET CENTERS

City	Highway Miles	City	Highway Miles
Atlanta, GA	365	Los Angeles, CA	1,994
Baltimore, MD	746	Louisville, KY	148
Birmingham, AL	316	Nashville, TN	128
Chicago, IL	327	New Orleans, LA	609
Cincinnati, OH	249	New York, NY	906
Cleveland, OH	494	Pittsburgh, PA	536
Detroit, MI	482	St. Louis, MO	203
Knoxville, TN	297		

**Note:** Mileage computations are via the best interstate or primary highways, not necessarily the most direct route of travel.

**Sources:** Rand McNally Standard Highway Mileage Guide, 1990. Official Kentucky Mileage Map, 1988.

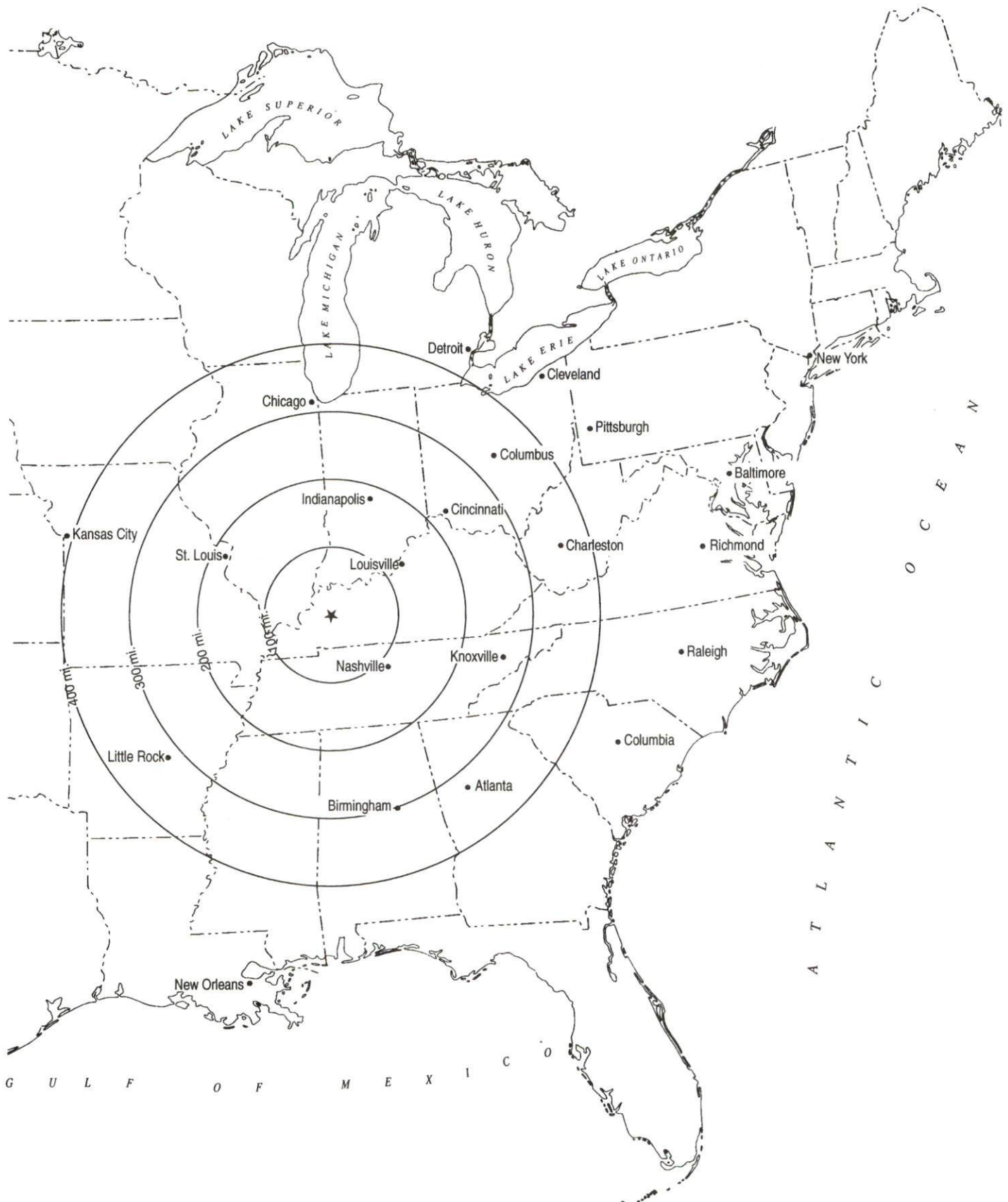
### Truck Service

Twenty-three common carrier trucking companies provide interstate and/or intrastate service to Webster County.

**Source:** American Motor Carrier Directory, Fall 1995.



## Selected Market Centers



## Rail

Webster County is served by an excellent network of rail companies. CSX Transportation provides main line rail service to Sebree and branch line service to Providence. Western Kentucky Railway provides short line service to Providence. CSX Transportation provides the nearest intermodal facilities at Evansville, Indiana, 36 miles north of Dixon.

For details on routing, schedules, rates, and services contact:

Manager  
Industrial Development  
CSX Transportation  
9420 Bunsen Parkway  
Suite 212  
Louisville, Kentucky 40220  
(502) 499-3025

and/or

Western Kentucky Railway  
P.O. Box 66  
Sturgis, Kentucky 42459  
(502) 664-9938

## Air

### Local

Location:	Providence-Webster County Airport
Runways:	2 miles northeast of Providence
Length:	1 paved
Traffic	3,800 feet
Control:	Lighted wind sock, unicom 122.8
Lighting:	Radio activated lighting system, rotating beacon
Services:	Car rental, tie down, hangar, office and lounge

### Nearest Scheduled Commercial Airline Service

Location:	Evansville Regional Airport
	3 miles north of Evansville, Indiana;
	39 miles north of Dixon
Air Service:	ASA, Chicago Express, ComAir, American Eagle, Northwest Airlink, TW Express, USAir US Air Express
Daily Arrivals & Departures:	98

## Water

The nearest navigable river is the Green River at Sebree, where a nine-foot navigation channel is maintained to the Ohio River. A private rail-served terminal at Sebree will contract with any manufacturer for use of loading and unloading facilities on the Green River.

## UTILITIES

### Electricity

Company serving **Clay, Dixon, Sebree, and parts of Webster County** - Kentucky  
Utilities Company

Source of power - Kentucky Utilities Company

For industrial rates contact:

Economic Development Department  
Kentucky Utilities Company  
One Quality Street  
Lexington, Kentucky 40507  
(606) 255-2100

Company serving **Providence** - Providence Municipal Utilities

Source of power - Kentucky Utilities Company

For industrial rates contact:

Providence Municipal Utilities  
P.O. Box 128  
Providence, Kentucky 42450  
(502) 667-2511

Company serving **rural Webster County** - Green River Electric Corporation  
and Henderson-Union Electric Cooperative

Source of power - Big Rivers Electric Corporation

For industrial rates contact:

Manager of Economic Development  
Big Rivers Electric Corporation  
P.O. Box 24  
Henderson, Kentucky 42420  
(502) 827-2561

and/or

Green River Electric Corporation  
P.O. Box 1389  
Owensboro, Kentucky 42302  
(502) 926-4141

and/or

Henderson-Union Electric Cooperative  
P.O. Box 18  
Henderson, Kentucky 42420  
(502) 826-3991 or (800) 844-4832

## Natural Gas

Company serving **Clay** - Clay Gas System  
Source of supply - Texas Gas Transmission Corporation  
For rates and supplies contact:

Clay Gas System  
P.O. Box 425  
Clay, Kentucky 42404  
(502) 664-2444

Company serving **Providence** - Providence Municipal Utilities  
Source of supply - Texas Gas Transmission Corporation  
For rates and supplies contact:

Providence Municipal Utilities  
P.O. Box 128  
Providence, Kentucky 42450  
(502) 667-2511

Company serving **Dixon and Sebree** - Western Kentucky Gas Company  
Source of supply - Texas Gas Transmission Corporation  
For rates and supplies contact:

Western Kentucky Gas Company  
P.O. Box 866  
Owensboro, Kentucky 42302-0866  
(502) 685-8069

## Public Water Supply

Company serving **Clay** - Clay Water System  
P.O. Box 425  
Clay, Kentucky 42404  
(502) 664-2444

Source of treated water -	Webster County Water District
Amount that can be purchased -	300,000 gallons per day
Average daily consumption -	110,000 gallons
Peak daily consumption -	150,000 gallons
Storage capacity -	500,000 gallons
Water pressure -	25 psi to 55 psi



Company serving **Providence** - Providence Municipal Utilities  
P.O. Box 128  
Providence, Kentucky 42450  
(502) 667-2511

Source - Municipal lake  
Treatment plant capacity - 1,500,000 gallons per day  
Average daily consumption - 729,941 gallons  
Peak daily consumption - 962,000 gallons  
Storage capacity - 700,000 gallons  
Water pressure - 52 psi to 83 psi

Company serving **Sebree** - City of Sebree  
P.O. Box 245  
Sebree, Kentucky 42455  
(502) 835-7501

Source of treated water - Green River (Alcan Ingot Plant)  
Amount that can be purchased - No set limit  
Average daily consumption - 155,000 gallons  
Peak daily consumption - 360,000 gallons  
Storage capacity - 315,000 gallons  
Water pressure - 82 psi to 122 psi

Name of water district - Webster County Water District  
P.O. Box 395  
Dixon, Kentucky 42409  
(502) 639-9010

Area served - Southern, northern, central and western parts  
of Webster County  
Source - Two wells  
Capacity of treatment plant - 864,000 gallons per day  
Average daily consumption - 750,000 gallons  
Peak daily consumption - At capacity  
Storage capacity - 1,035,000 gallons  
Water pressure - 35 psi to 150 psi

The Water District is in the process of implementing a system improvements/upgrade project. This project includes approximately nine miles of water line, a 300,000-gallon ground water storage tank, a 500,000-gallon elevated storage tank, and possible emergency interconnect with the City of Sebree.

The Water District is also making plans for a new 4.0 MGD water treatment plant. This facility will utilize river water instead of ground water from wells, which is the District's current source of supply. This new facility is projected to be on-line by January 1997.

## Sewerage

### Company serving **Clay** -

Clay Sewer System  
P.O. Box 425  
Clay, Kentucky 42404  
(502) 664-2444

Design capacity - 200,000 gallons per day  
Average daily flow - 40,000 gallons  
Type of treatment - Secondary  
Treated effluent discharged into - Crab Orchard Creek

### Company serving **Providence and Dixon** -

Providence Municipal Utilities  
P.O. Box 128  
Providence, Kentucky 42450  
(502) 667-2511

Design capacity - 626,000 gallons per day  
Average daily flow - 400,000 gallons  
Type of treatment - Secondary  
Treated effluent discharged into - Owens Creek

### Company serving **Sebree** -

Sebree Wastewater Treatment Plant  
P.O. Box 245  
Sebree, Kentucky 42455  
(502) 835-7501

Design capacity - 180,000 gallons per day  
Average daily flow - At capacity  
Type of treatment - Primary  
Treated effluent discharged into - Mock Roy Creek

Sebree is currently in negotiations with Henderson County Water and Sewer Utilities to purchase additional water and wastewater treatment services, which would increase Sebree's current capabilities.

## CLIMATE

### Webster County

#### Temperature

Normal (30-year record)	55.70 degrees
Average annual 1993	56.30 degrees
Record highest, July 1954 (53-year record)	105.00 degrees
Record lowest, February 1951 (53-year record)	-23.00 degrees
Normal heating degree days (30-year record)	4,729
(Heating degree day totals are the sums of negative departures of average daily temperatures from 65 degrees F.)	

#### Precipitation

Normal (30-year record)	41.55 inches
Mean annual snowfall (53-year record)	13.30 inches
Total precipitation 1993	35.81 inches
Mean number days precipitation (.01 inch or more) (53-year record)	115.40
Mean number days thunderstorms (53-year record)	45.30

#### Prevailing Winds (through 1963)

South-Southwest

#### Relative Humidity (32-year record)

1 a.m.	79 percent
7 a.m.	82 percent
1 p.m.	59 percent
7 p.m.	63 percent

**Source:** U.S. Department of Commerce, Environmental Science Services Administration, Climatological Data, 1993. Station of record: Evansville, Indiana.



## **LOCAL GOVERNMENT**

### **Structure**

Clay, Providence and Sebree are each governed by a mayor and six council members. Dixon, Slaughters, and Wheatcroft are governed by a mayor and four council members. The mayor for each city is elected to a four-year term while the council members each serve two-year terms.

Webster County is served by a county judge/executive and three magistrates. Each county official serves a four-year term.

### **Planning and Zoning**

City agency - Providence Planning Commission

Zoning enforced - Within city and 2.5 miles beyond the corporate limits

Subdivision regulations enforced - Within city limits and 2.5 miles beyond the corporate limits

Local codes enforced - Building

Mandatory state codes enforced - Kentucky Plumbing Code, National Electric Code, Kentucky Boiler Regulations and Standards, Kentucky Building Code (modeled after BOCA code)

### **Local Fees and Licenses**

The City of Sebree levies a business license fee ranging from \$31.25 to \$70.00. Automobile license fees are \$10.00 annually. An optional fire card is available for \$25.00 annually, which provides fire protection to residents and businesses outside of Sebree, within a ten-mile radius. The City of Clay levies a \$10.50 to \$15.50 unloading license fee.

## PROPERTY TAXES

The Kentucky Constitution requires the state to tax all classes of taxable property, and state statutes allow local jurisdictions to tax only a few classes. All locally taxed property is subject to county taxes and school district taxes (either a county school district or an independent school district). Property located inside of city limits may also be subject to city property taxes.

Special local taxing jurisdictions (fire protection districts, watershed districts, and sanitation districts) levy taxes within their operating areas (usually a small portion of community or county).

Property assessments in Kentucky are at 100% fair cash value. Accounts receivable are taxed at 85% of face value.

### **STATE PROPERTY TAX RATES PER \$100 VALUATION**

<u>Selected Classes of Property</u>	<u>1994 State Rate</u>	<u>Local Taxation Permitted</u>
Real Estate	\$0.172	YES
Manufacturing Machinery	0.150	NO
Pollution Control Equipment	0.150	NO
Inventories		
Raw Materials	0.050	NO
Goods in Process	0.050	NO
Finished Goods	0.050	YES
Motor Vehicles	0.450	YES
Other Tangible Personal Property	0.450	YES
Intangibles (Accounts Receivable, Money on Hand)	0.250	NO

### **LOCAL PROPERTY TAX RATES PER \$100 VALUATION, 1994**

<u>Taxing Jurisdiction</u>	<u>Real Estate</u>	<u>Finished Goods &amp; Tangibles</u>	<u>Motor Vehicles</u>
Webster County	\$0.2090	\$0.2090	\$0.2208
School Districts:			
Providence Independent	0.3360	0.3390	0.5450
Webster County	0.4210	0.4210	0.4360
Cities:			
Clay	0.2800	0.2800	0.2800
Dixon	0.1780	0.2370	0.2370
Providence	0.5000	0.5000	0.5000
Sebree	0.3300	0.3300	0.3300
Slaughters	0.1940	0.1940	0.1940

## EDUCATION

### Public Schools

	Providence Independent	Webster County
Total Enrollment (Fall, 1994)	557	2,120
Pupil-Teacher Ratio (1993-94)	14.2-1	16.9-1
Percent High School Graduates to College (1993-94)	26.9	60.6
Expenditures Per Pupil (1993-94)	\$4,300.35	\$3,874.40

The Providence Independent School System recently completed an addition and improvements including two pre-school rooms, two special-education rooms, sprinkler system, and intercom system.

The Webster County School System expects to complete a \$1.85 million construction project by Fall 1996 including renovation and modernization of science rooms at Webster County High School (including science labs), and Dixon and Clay Elementary Schools. Renovations at Dixon Elementary will also add pre-school rooms. The school system is also working in cooperation with the Kentucky Tech System and the Webster County Area Technology Center to offer a state-of-the-art Technology Education Program at the Center that will provide training in 10 to 12 occupational fields.

### Area Colleges and Universities

<u>Name</u>	<u>Location (Miles from Dixon)</u>	<u>Enrollment (Fall, 1994)</u>
Madisonville Community College	Madisonville, Kentucky (24)	2,513
Henderson Community College	Henderson, Kentucky (26)	1,240
University of Evansville	Evansville, Indiana (36)	3,306
University of Southern Indiana	Evansville, Indiana (36)	7,443
Brescia College	Owensboro, Kentucky (56)	740
Kentucky Wesleyan College	Owensboro, Kentucky (56)	738
Owensboro Community College	Owensboro, Kentucky (56)	2,552
Hopkinsville Community College	Hopkinsville, Kentucky (58)	2,612



## VOCATIONAL-TECHNICAL TRAINING

Kentucky Tech schools are operated by the Cabinet for Workforce Development and provide secondary (Sec) and postsecondary (P/S) vocational-technical training.

<u>Kentucky Tech Schools</u>	<u>Location (Mileage from Dixon)</u>	<u>Number of Program Offerings</u>	<u>Cumulative Enrollment 1994-1995</u>		<u>Approximate Number Completing Long-Term Programs Annually</u>
Webster County Area Technology Center	Dixon	4	<u>Sec</u> 90	<u>P/S</u> 9	3
Madisonville Regional Technology Center	Madisonville (24)	11	<u>Sec</u> 97	<u>P/S</u> 6,190	42
Madisonville Health Technology Center	Madisonville (24)	11	<u>Sec</u> 105	<u>P/S</u> 284	139

### Customized Training

The Kentucky Tech system, through its Training and Development Coordinators, will provide technical assistance and will identify and develop low-cost customized training programs and services for both established and prospective businesses. Businesses needing customized training should contact a Training and Development Coordinator located at the Kentucky Tech-West Region, 750 North Laffoon Street, Madisonville, Kentucky 42431, (502) 824-7552.

### Assessment Services

Kentucky Tech Career Connections offers to business, education, and government agencies customized assessment in career inventories, interest inventories, pre-hire assessments, psychomotor skills and academic potential. Career Connections is located on the Madisonville Regional Technology Center campus, (502) 825-5059.

### Adult Education Services

Adult education is available to adults who want to develop new skills, improve basic skills or earn a high school equivalency degree. In Webster County adult literacy is provided by the Webster County Adult Literacy Commission and the Providence Board of Education.

### Tech Prep

Tech Prep is a combined secondary and postsecondary program of studies that leads to an associate degree or diploma in a vocational-technical field. Webster County Area Technology Center offers tech prep programs in health services, machine tool technology and welding. Madisonville Regional Technology Center offers tech prep programs in business, auto, construction and welding technology.

### Articulation

Articulation agreements developed between various colleges and universities and the Kentucky Tech system allow students to earn credits to be used when matriculating to degree programs at a college or university. Madisonville Regional Technology Center and Madisonville HTC each have articulation agreements with Madisonville Community College. Madisonville HTC also has articulation agreements in most of its health programs with other universities throughout the state.

### Bluegrass State Skills Corporation

The Bluegrass State Skills Corporation, an independent public corporation created and funded by the Kentucky General Assembly, provides programs of skills training to meet the needs of business and industry from entry level to advanced training, and from upgrading present employees to retraining experienced workers.

The Bluegrass State Skills Corporation is a major source for skills training assistance for a new or existing company. The Corporation works in partnership with other employment and job training resources and programs, as well as Kentucky's economic development activities, to package a program customized to meet the specific needs of a company.

## OTHER LOCAL FACILITIES

### Local Medical Personnel

Physicians - 5  
Dentists - 3

### Hospitals

<u>General Hospital</u>	<u>Location</u>	<u>Beds</u>
Regional Medical Center of Hopkins County	Madisonville, 24 miles southeast of Dixon	410
Community United Methodist Hospital	Henderson, 26 miles north of Dixon	213

### Regional Medical Center of Hopkins County

Medical staff - 86 active staff physicians, 16 courtesy staff physicians, 295 registered nurses,  
74 licensed practical nurses

### Community United Methodist Hospital, Henderson

Medical staff - 55 active staff physicians, 39 courtesy staff physicians, 168 registered nurses,  
41 licensed practical nurses

### Other Medical Facilities and Services

Community Methodist Ambulatory Center (Dixon)  
Sebree Medical Center  
Trover Clinic (Providence)  
Webster County Health Department (Dixon)  
Providence Fire Department (provides ambulance service)  
City of Sebree Emergency Medical Service  
Webster County Ambulance Service (units in Clay and Dixon)

### Banks and Savings & Loan Associations

Dixon Bank  
Farmers Bank (Clay, Providence, and Sebree)  
Citizens Bank (Slaughters)  
First Kentucky Bank (Poole)  
Providence State Bank  
Sebree Deposit Bank



**Newspapers**

Journal Enterprise - Providence (weekly)  
The Sebree Banner - Sebree (weekly)

**Telephone Service**

South Central Bell

Webster County has just recently implemented the enhanced version of the "911" emergency dispatch communications system.

## RECREATION

### Local

Baker Park in Dixon includes a fishing lake and a little league field. Dixon Park features basketball and tennis courts, a baseball field, a picnic shelter, and concessions. Wildwood, a new nine-hole golf course, is located in Dixon. Another 18-hole golf course is under construction adjacent to Wildwood Golf Course as well as a resort area, lodge, meeting facility, and a residential resort community. Expected completion is scheduled for 1996.

Westerfield Memorial Park in Providence contains picnic shelters and grills, a concession stand, restrooms, three baseball diamonds, two tennis courts, a basketball court, a track and a playground. The Legion Park contains a baseball diamond, Christian Youth Center, horse show ring and is the location of the annual Coal Festival. Providence Golf and Country Club features a nine-hole golf course and a swimming pool.

The 30-acre Sebree Springs Park in Sebree features a swimming pool, two tennis courts, volleyball courts, a baseball diamond, a pee-wee baseball diamond, a basketball court, a pavilion, a picnic area, three shelter houses, a horse show ring and playground equipment. Sebree Elementary School offers a football field.

The Clay Community Park in Clay is a ten-acre public park containing two lighted baseball fields with bleachers, playground equipment, two tennis courts, concession stands, barbecue pit, and a community building.

Senior Citizens Centers providing meals and activities are located in Providence, Dixon, Poole, and Sebree.

### Area (Within 35 miles)

Just north of Henderson, 28 miles north of Dixon, is the John James Audubon State Park, a 692-acre park where the famed naturalist gathered material for his painting, "The Birds of America." Many paintings by Audubon and his sons, and 126 first-edition prints of his paintings are on display at the Audubon Memorial and Nature Museum which is the focal point of the park. Other park features include the Audubon woods, a bird sanctuary, and a 12-acre nature preserve lake. The park has cottages and camping sites. Recreational facilities include a 28-acre recreational lake, a beach and a bathhouse, rental rowboats and pedal boats, a dock, a nine-hole golf course, a tennis court, hiking trails, picnic shelters, planned recreation, and playgrounds. Organized recreation programs are offered during the summer.

Pennyrile Forest State Resort Park near Dawson Springs is located 33 miles south of Dixon. The 24-room lodge, 13 cottages, and 68 campsites nestled within the trees provide excellent accommodations. Other facilities and activities include a dining room, a gift shop, rental rowboats and pedal boats, a nine-hole golf course, miniature golf, hiking trails, horseback riding, picnicking, playgrounds, shuffleboard, swimming at the lodge pool and at the sand beach, and two tennis courts. Lake Beshear, only four miles from the lodge, sports good fishing.