

1981

Industrial Resources: Adair County - Columbia

Kentucky Library Research Collections
Western Kentucky University, spcol@wku.edu

Follow this and additional works at: https://digitalcommons.wku.edu/adair_cty

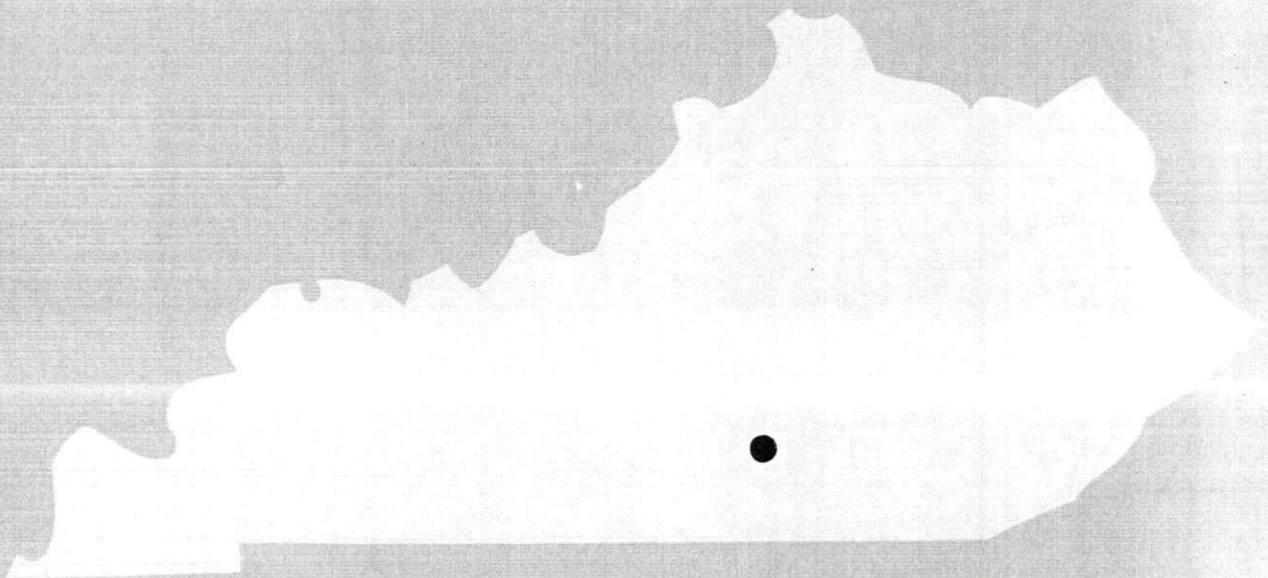
 Part of the [Business Administration, Management, and Operations Commons](#), [Growth and Development Commons](#), and the [Infrastructure Commons](#)

Recommended Citation

Kentucky Library Research Collections, "Industrial Resources: Adair County - Columbia" (1981). *Adair County*. Paper 15.
https://digitalcommons.wku.edu/adair_cty/15

This Report is brought to you for free and open access by TopSCHOLAR®. It has been accepted for inclusion in Adair County by an authorized administrator of TopSCHOLAR®. For more information, please contact topscholar@wku.edu.

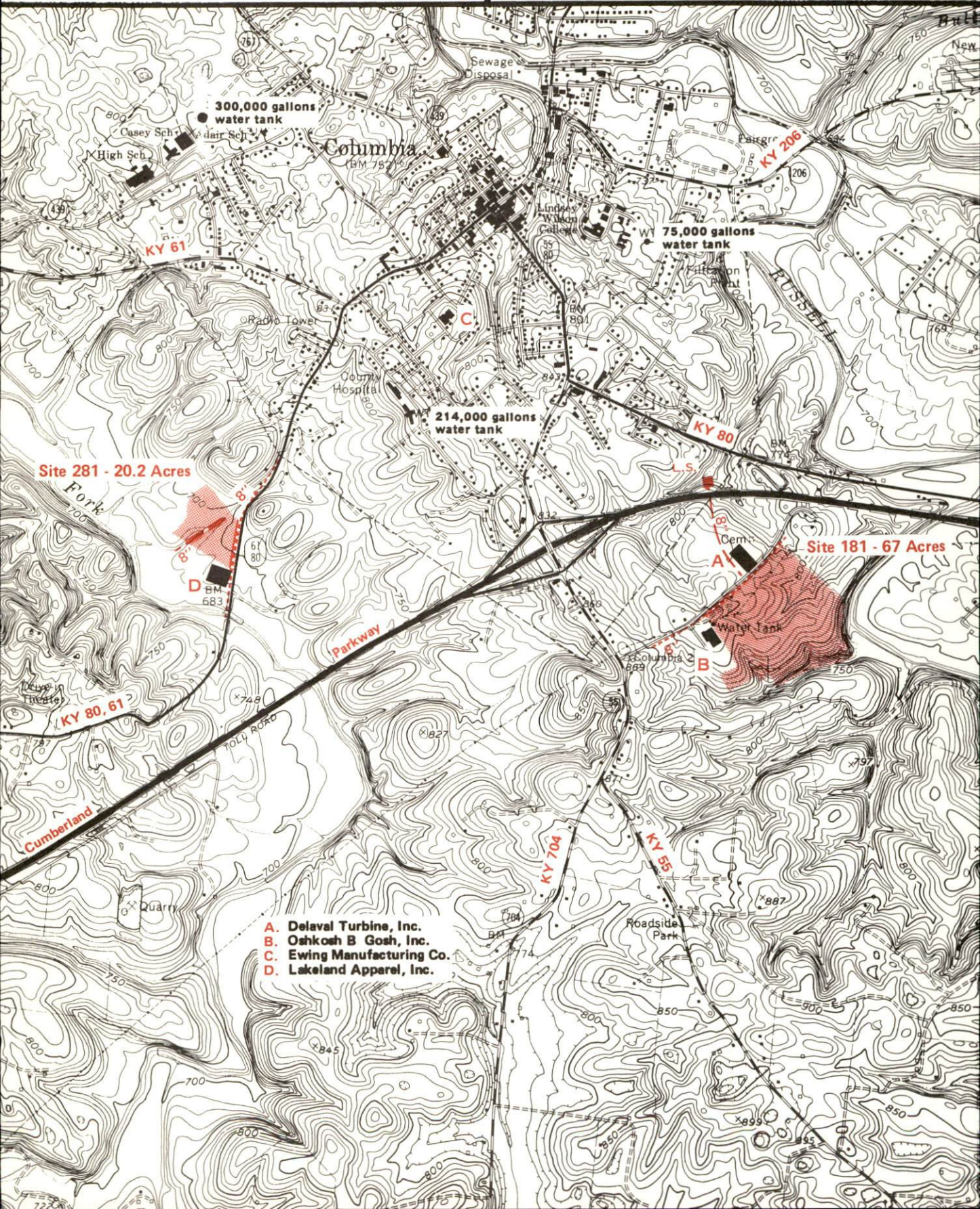
A comprehensive
report on
Columbia, Ky.



KENTUCKY & CO.
The state that's run like a business.

For more information contact Mrs. Mary Allender, P. O. Box 116, Columbia, Kentucky 42728 or the Kentucky Commerce Cabinet, New Industries Division, Capital Plaza Tower, Frankfort, Kentucky 40601.

COLUMBIA, KENTUCKY Industrial Sites - 1981



Site 281 - 20.2 Acres

Site 181 - 67 Acres

- A. Delaval Turbine, Inc.
- B. Oshkosh B Gosh, Inc.
- C. Ewing Manufacturing Co.
- D. Lakeland Apparel, Inc.

Site 181 - 67 Acres

LOCATION: Approximately 1000 feet southeast of city limits
ZONING: Not zoned
HIGHWAY ACCESS: Paved access road adjacent to northern boundary of site
RAILROAD: Not rail served
WATER: Columbia Utilities Commission
Size Line: 8-inch line along northern boundary of site
GAS: Columbia Utilities Commission
Size Line: 2-inch line along northern boundary of site
ELECTRICITY: Taylor County RECC
SEWERAGE: Columbia Utilities Commission
Size Line: 8-inch line approximately 100 feet north across paved access road
OWNERSHIP: Columbia-Adair County Chamber of Commerce

Site 281 - 20.2 Acres

LOCATION: Approximately 1200 feet southwest of city limits
ZONING: Not zoned
HIGHWAY ACCESS: KY 80,61 adjacent to southeast boundary
RAILROAD: Not rail served
WATER: Adair County Water District
Size Line: 8-inch line along southeast boundary
GAS: Monticello Utilities Commission
Size Line: 2-inch line approximately 1200 feet northeast of site
ELECTRICITY: Kentucky Utilities Company
SEWERAGE: Monticello Utilities Commission
Size Line: 8-inch line serves the site
OWNERSHIP: Private

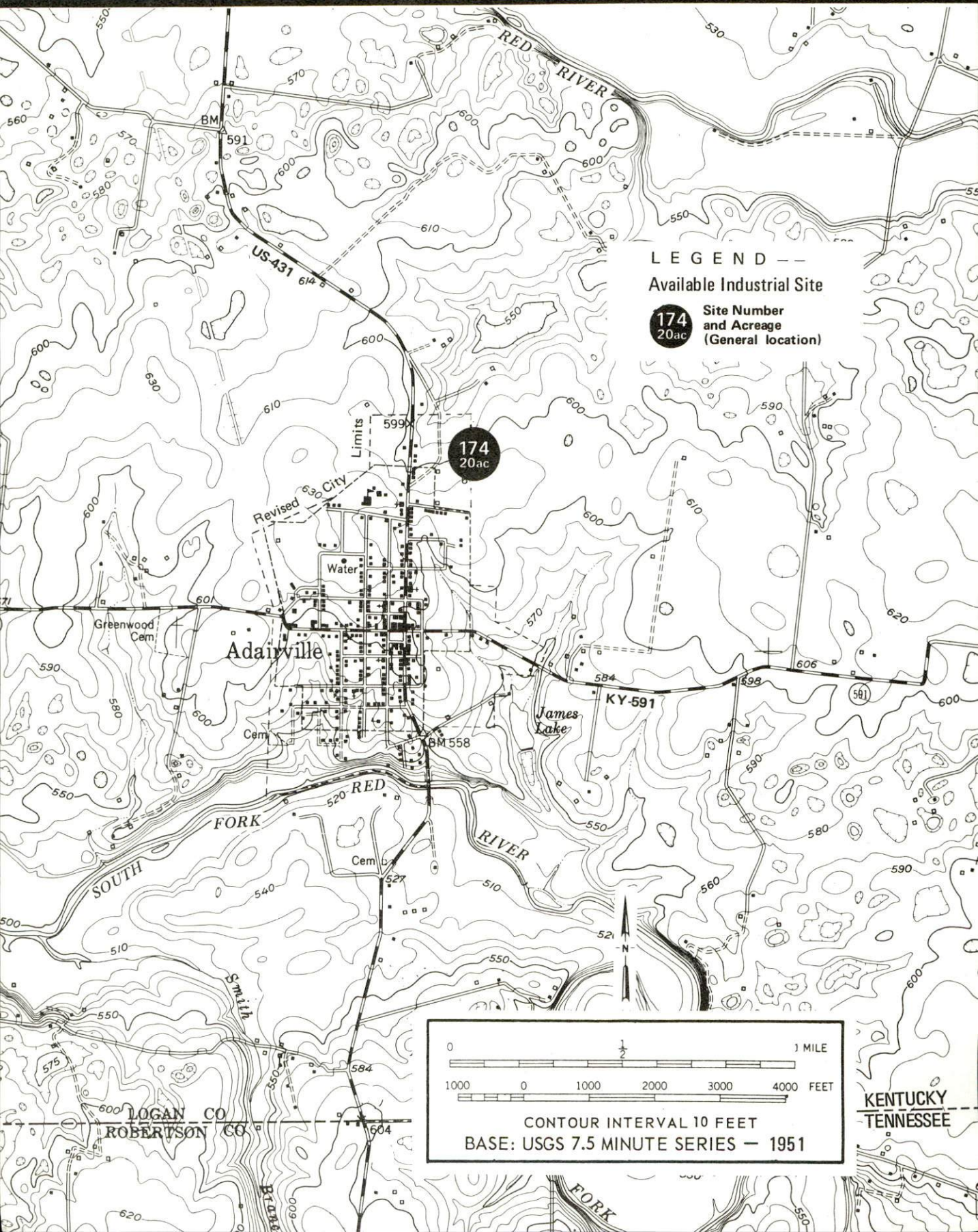
SCALE: 1 inch = 2000 feet
CONTOUR INTERVAL: 10 feet
BASE: USGS 7.5 minute series - 1973

UTILITIES
----- Water Line
----- Sewer Line



ADAIRVILLE, KENTUCKY -- Index to Industrial Sites -- 1974

For detailed site data contact Mr. Burton Estep, Adairville Banking Company, Adairville, Kentucky 42202
or the Kentucky Department of Commerce, Capital Plaza Tower, Frankfort, Kentucky 40601



A COMPREHENSIVE REPORT ON
COLUMBIA, KENTUCKY

Prepared by
The Kentucky Department of Commerce
Division of Research and Planning
in cooperation with
The Columbia-Adair County Chamber of Commerce

1981

Program supervisor - Brenda Roberts; research - Chris Karibo; clerical - Linda Fint; graphics - Frank Ferrante, Tony Cecconi, Jimmy Thompson; cartography - Site Evaluation Section, Division of New Industries. Cost of printing paid from state funds.

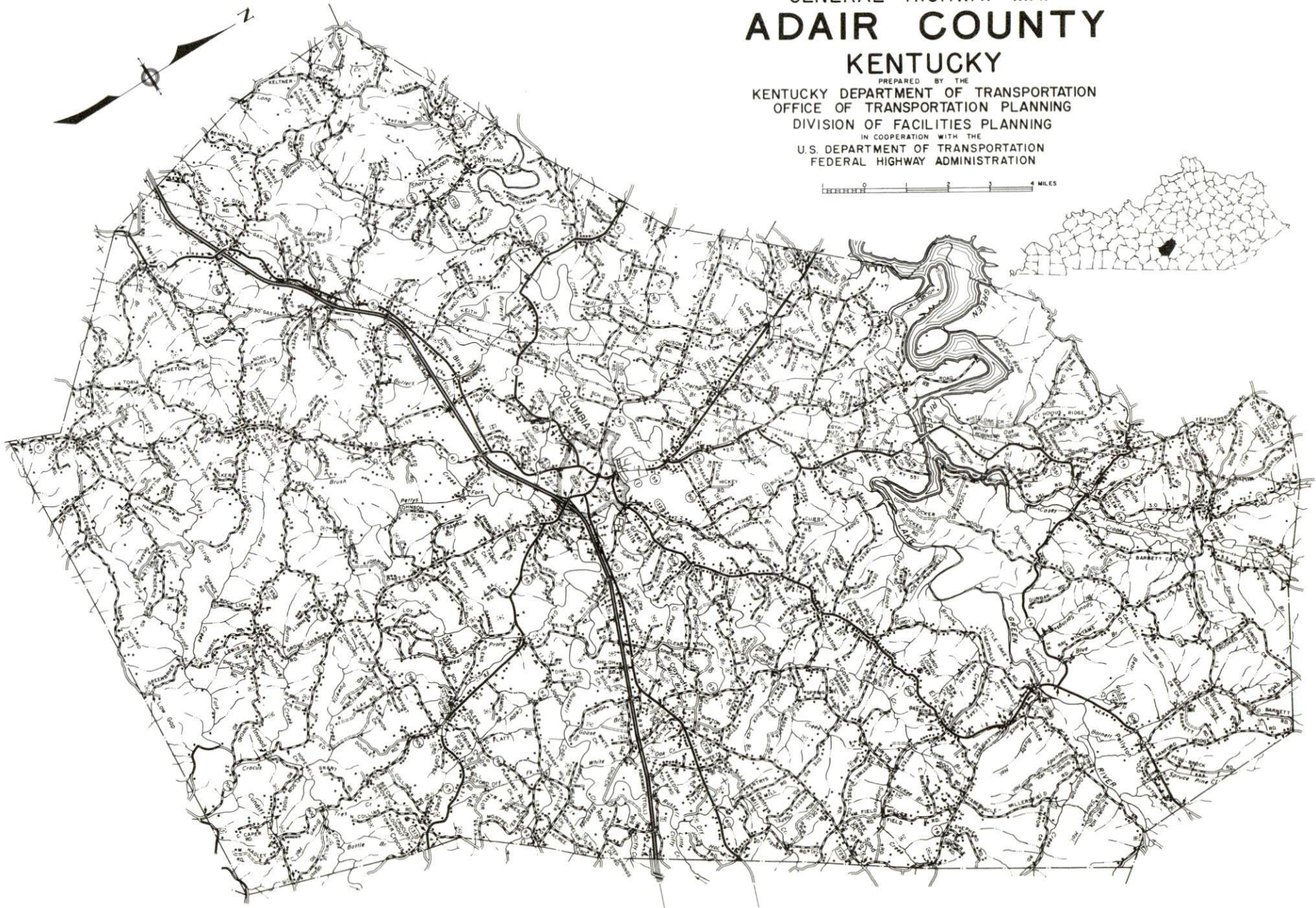
TABLE OF CONTENTS

<u>Chapter</u>	<u>Page</u>
INDUSTRIAL SITES	i
THE LABOR MARKET AREA	1
Population	1
Labor Force Characteristics of Residents, 1980	1
Estimated Male Labor Supply	2
Estimated Female Labor Supply	2
Adair County Manufacturing Firms, Their Products and Employment	3
Labor Organizations in Manufacturing Firms	5
Industrial Services	5
Average Weekly Wages by Industry, by Place of Work, 1979	6
Per Capita Personal Income	8
TRANSPORTATION	9
Rail	9
Highways	9
Truck Service	9
Air	11
Bus	11
Taxi	11
Rental Services	11
POWER AND FUEL	12
Electricity	12
Natural Gas	13
Other Fuels	13
WATER AND SEWERAGE	14
Water	14
Raw Water	17
Sewerage	17
CLIMATE	18

<u>Chapter</u>	<u>Page</u>
LOCAL GOVERNMENT	19
City	19
County	19
Assessed Value of Property	19
Property Taxes	19
Combined State and Local Rates Per \$100	
Valuation, 1980	20
Planning and Zoning	20
Safety	21
Police	21
Fire	21
Rescue Service	21
Refuse Collection and Disposal	21
EDUCATION	22
Public Schools	22
Area Colleges and Universities	23
Vocational Schools	24
HEALTH	26
Local Medical Personnel	26
Hospitals	26
Other Medical Facilities	26
Ambulance Service	26
Public Health	26
OTHER LOCAL FACILITIES	27
Communications	27
Library Services	28
Religious Institutions	28
Financial Institutions	29
Hotels and Motels	29
Clubs and Organizations	30
RECREATION	31

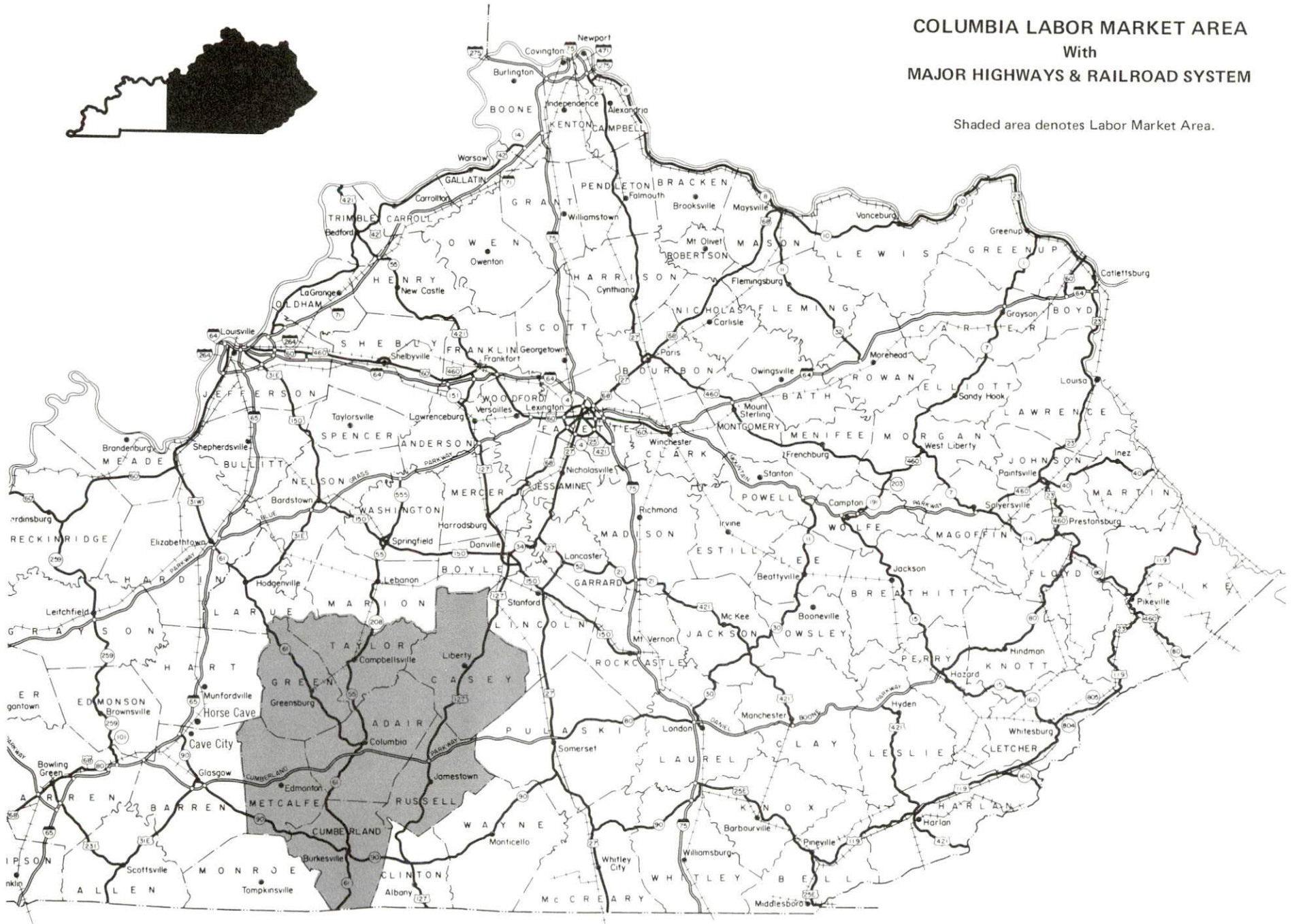
1980 EDITION
GENERAL HIGHWAY MAP
ADAIR COUNTY
KENTUCKY

PREPARED BY THE
KENTUCKY DEPARTMENT OF TRANSPORTATION
OFFICE OF TRANSPORTATION PLANNING
DIVISION OF FACILITIES PLANNING
IN COOPERATION WITH THE
U.S. DEPARTMENT OF TRANSPORTATION
FEDERAL HIGHWAY ADMINISTRATION



COLUMBIA LABOR MARKET AREA
With
MAJOR HIGHWAYS & RAILROAD SYSTEM

Shaded area denotes Labor Market Area.



THE LABOR MARKET AREA

The Columbia Labor Market Area includes Adair County and the adjoining Kentucky counties of Casey, Cumberland, Green, Metcalfe, Russell, and Taylor.

Area	POPULATION		Percent Nonwhite
	1980	1970	
Columbia	3,710	3,234	9.6
Labor Market Area	92,753	79,024	N/A
Adair County	15,233	13,037	3.6
Casey County	14,818	12,930	0.3
Cumberland County	7,289	6,850	5.4
Green County	11,043	10,350	3.5
Metcalfe County	9,484	8,177	3.0
Russell County	13,708	10,542	0.9
Taylor County	21,178	17,138	5.6

Note: The 1980 counts of population by race are provisional.

Source: U.S. Department of Commerce, Bureau of the Census, March 1981, as published in Special Report No. 8, State Data Center, Urban Studies Center, University of Louisville, March 1981.

LABOR FORCE CHARACTERISTICS OF RESIDENTS, 1980

	Adair County	Labor Market Area
Civilian Labor Force	6,548	40,570
Employment	6,093	37,312
Agricultural	1,210	6,039
Nonagricultural	4,883	31,273
Unemployment	455	3,258
Rate of Unemployment (%)	6.9	8.0

Source: Kentucky Department for Human Resources, Kentucky Labor Force Estimates, Annual Averages, 1980.

ESTIMATED MALE LABOR SUPPLY
COLUMBIA LABOR MARKET AREA

Area	Current			Future	
	Total	Not in Labor Force	Unemployed	Under-employed	Reaching 18 years of age before 1986
Labor Market Area*	3,399	616	1,203	1,580	3,427
Adair	552	103	189	260	537
Casey	580	102	188	290	584
Cumberland	332	54	108	170	270
Green	354	80	134	140	441
Metcalfe	332	62	150	120	374
Russell	532	84	228	220	440
Taylor	717	131	206	380	781

*Additional workers may be drawn from other nearby counties.

Note: Not in Labor Force - persons who would enter the labor force if suitable employment were available; Unemployed - persons unemployed and actively seeking work; Underemployed - persons employed but working only 14 to 26 weeks per year.

Sources: Kentucky Department for Human Resources, Kentucky Labor Supply Estimates by County, 1979. Kentucky Department of Commerce, Future Labor Supply before 1986.

ESTIMATED FEMALE LABOR SUPPLY
COLUMBIA LABOR MARKET AREA

Area	Current			Future	
	Total	Not in Labor Force	Unemployed	Under-employed	Reaching 18 years of age before 1986
Labor Market Area*	2,637	268	1,099	1,270	3,389
Adair	389	46	173	170	512
Casey	452	43	169	240	576
Cumberland	232	21	101	110	294
Green	316	33	123	160	415
Metcalfe	242	27	135	80	363
Russell	450	38	212	200	481
Taylor	556	60	186	310	748

*Additional workers may be drawn from other nearby counties.

Note: Not in Labor Force - persons who would enter the labor force if suitable employment were available; Unemployed - persons unemployed and actively seeking work; Underemployed - persons employed but working only 14 to 26 weeks per year.

Sources: Kentucky Department for Human Resources, Kentucky Labor Supply Estimates by County, 1979. Kentucky Department of Commerce, Future Labor Supply before 1986.

ADAIR COUNTY MANUFACTURING FIRMS,
THEIR PRODUCTS AND EMPLOYMENT

Firm (Establishment date)	Product	Employment			Labor Unions
		Total	Male	Female	
<u>Columbia</u>					
Adair Cheese Company (1959)	Fluid milk	4	4	-	
Barnes Milling Company (1965)	Feed	7	5	2	
City Supply Company (1948)	Ready-mixed concrete, concrete stock tanks	14	12	2	
The Daily Statesman, Waggener-Walker Newspapers (1968)	Offset printing, newspaper publishing, job printing	70	18	52	
Day & Day Feed Mill (1960)	Feed	5	5	-	
J. Downey and Son Lumber (1975)	Furniture dimension stock	25	24	1	
Ewing Manufacturing Company (1978)	Ladies' blouses, men's shirts	55	5	50	
R. E. Gaddie, Inc. (1938)	Plant mix asphalt	22	20	2	
Kentucky Tie and Lumber Company (1958)	Hardwood lumber, dimension material, pallet material	30	28	2	
Lakeland Apparel, Inc. (1978)	Men's T-shirts, women's tops and shorts	99	9	90	
M & W Milling Company, Inc. (1946)	Feed	7	6	1	

Firm (Establishment date)	Product	Employment			Labor Unions
		Total	Male	Female	
Morrison Lumber Company (1958)	Rough lumber, crossties, charcoal wood	26	25	1	
Oshkosh B'Gosh, Inc. (1964)	Work clothing, casual clothing	275	44	231	Garment Workers*
Roach Manufacturing Company (1940)	Tobacco spears and knives, truck body hardware	3	3	-	
W. H. Sandusky and Son, Inc. (1940)	Lumber	19	18	1	
Shamrock Stone, Inc. (1978)	Crushed stone, agri- cultural lime	18	-	-	
South Central Printing, Inc. (1979)	Job printing, book composing and printing, calendars	11	4	7	
Transamerica Delaval, Inc. (1973)	Hydraulic pumps	148	139	9	
Warner Fertilizer Company, Inc. (N/A)	Fertilizer	3	-	-	
Whitney & Whitney (1952)	Hardwood lumber, crossties, pallet lumber	17	17	-	

<u>Firm (Establishment date)</u>	<u>Product</u>	<u>Employment</u>			<u>Labor Unions</u>
		<u>Total</u>	<u>Male</u>	<u>Female</u>	
<u>Breeding</u>					
Gibson Lumber Company (1965)	Rough lumber, flitches, logs for lining and walling, pallet stock	45	41	4	
<u>Knifley</u>					
Quality Furniture Shop (1958)	Cherry repro- duction furniture	6	6	-	

*See Labor Organizations below.

Source: Kentucky Department of Commerce, Division of Research and Planning.

LABOR ORGANIZATIONS IN MANUFACTURING FIRMS

<u>Union</u>	<u>Representing workers at:</u>
United Garment Workers of America, AFL-CIO	Oshkosh B'Gosh, Inc.

INDUSTRIAL SERVICES

	<u>Location</u>	<u>Mileage from Columbia</u>
Tool & Die, Machine & Pattern Shops	Horse Cave	55 miles west
	Monticello	62 miles southeast
Metal Service Centers	Bowling Green	70 miles west
Heat Treating	Richmond	109 miles northeast
Metal Finishers	Elizabethtown	60 miles northwest
Electric Motor Repair	Lebanon	39 miles north
	Somerset	42 miles east

Sources: Kentucky Directory of Selected Industrial Services, 1979;
Kentucky Department of Commerce, Division of Research and Planning.

AVERAGE WEEKLY WAGES BY INDUSTRY,
BY PLACE OF WORK, 1979

	<u>Adair County</u>	<u>Casey County</u>	<u>Cumberland County</u>	<u>Green County</u>
All Industries	\$162.12	\$138.81	\$137.62	\$170.25
Mining & Quarrying	251.53	*	*	*
Contract Construction	164.81	200.63	83.09	155.52
Manufacturing	143.11	115.58	123.14	181.95
Transportation, Communications & Public Utilities	197.25	244.29	151.01	307.11
Wholesale & Retail Trade	127.48	128.61	123.98	125.88
Finance, Insurance & Real Estate	204.36	182.59	136.54	180.51
Services	189.56	170.82	154.38	158.31
Other	*	*	135.72	113.06

	<u>Metcalfe County</u>	<u>Russell County</u>	<u>Taylor County</u>
All Industries	\$140.63	\$151.35	\$184.13
Mining & Quarrying	151.36	*	191.86
Contract Construction	103.41	281.28	188.69
Manufacturing	122.92	136.79	*
Transportation, Communications & Public Utilities	215.70	236.20	293.22
Wholesale & Retail Trade	120.93	116.44	131.00
Finance, Insurance & Real Estate	149.14	176.48	210.26
Services	171.44	151.03	163.48
Other	*	0	92.34

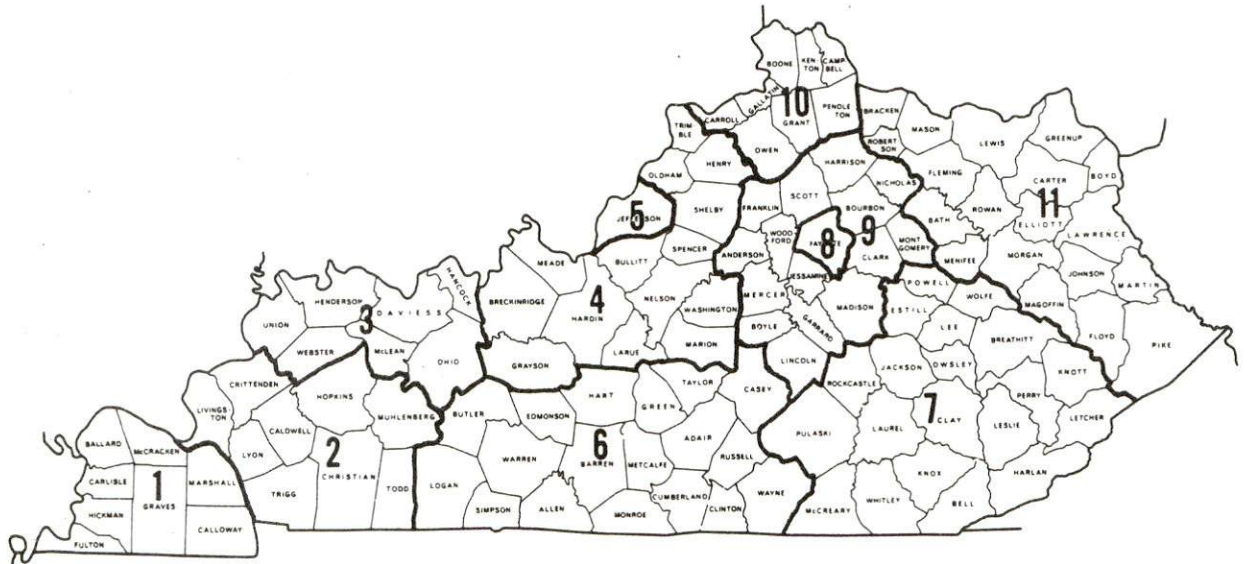
*Not disclosed.

Note: Excludes domestic workers, railway workers, certain nonprofit corporations, majority of federal government workers, and self-employed workers. Effective January 1, 1979, the Kentucky Unemployment Insurance Law extended coverage to include all state and local government agencies (shown in the Services category).

Source: Kentucky Department for Human Resources, Average Weekly Wages of Workers Covered by Kentucky Unemployment Insurance Law, 1979.

Occupational wage rates for specific industries are usually not available to most government agencies, and wage data furnished to state employment agencies by individual industrial employers is protected from disclosure by federal law. The most reliable up-to-date wage information can be obtained by direct contact with local employers.

Associated Industries of Kentucky, a voluntary organization of Kentucky businesses, regularly collects occupational wage rates and fringe benefits data from participating member firms. Data is compiled for over 127 clearly defined office, production, and service occupations. Tabulations are published for eleven regions of Kentucky, as shown on the map below. It should be noted that the data may be weighted by the preponderance of firms in the larger cities and may be somewhat higher than the rates paid in the smaller communities. Data from these tabulations are available, upon request, from the Kentucky Department of Commerce, Frankfort, Kentucky 40601.



Associated Industries of Kentucky Area Wage Surveys

PER CAPITA PERSONAL INCOME

<u>Area</u>	<u>1979</u>	<u>1975</u>	<u>Percent Change</u>
Adair County	\$4,875	\$3,047	60.0
Labor Market Area Range	\$4,134 - 6,526	\$2,666 - 4,425	N/A
Kentucky	7,377	4,882	51.1
U.S.	8,757	5,861	49.4

Source: U.S. Department of Commerce, Bureau of Economic Analysis,
April 1981.

TRANSPORTATION

Rail

The nearest rail service is provided by the Louisville and Nashville Railroad at Campbellsville, 19 miles north of Columbia.

Services - Local turnaround service Monday through Friday; switching facilities; team track space available for 5 cars; nearest piggyback facilities in Glasgow, 37 miles west of Columbia.

For details on routing, schedules, rates, and services, contact:

Director of Industrial Development
Louisville and Nashville Railroad
P. O. Box 32290
Louisville, Kentucky 40232
(502) 587-5723

Highways

The Cumberland Parkway serves Columbia with an interchange just 1 mile south of the city. The Cumberland Parkway connects with Interstate 65 approximately 50 miles to the west. Other highways serving Columbia include Kentucky 80, a "AAA" rated trucking highway; Kentucky 55, which is "AAA" rated north of Columbia and "AA" rated south of Columbia; and Kentucky 61, 551, and 206, all "AA" rated trucking highways.

Truck Service

<u>Company</u>	<u>Home Office</u>
Central Motor Express, Inc.*(T)	P. O. Drawer C Campbellsville, Kentucky 42718
Eagle Express Company*	P. O. Box 12047 Lexington, Kentucky 40580
Manning Motor Express, Inc.**	P. O. Box 685 Glasgow, Kentucky 42141
Sanders & Leigh Transfer Company***	P. O. Box 69 Liberty, Kentucky 42539
Smith's Transfer Corporation**	P. O. Box 1000 Staunton, Virginia 24401

(T)Local terminal.

*Interstate and intrastate service.

**Interstate service only.

***Intrastate service only.

Other Freight ServicesNearest Shipping Center or Home Office

Purolator Courier Corporation*
 United Parcel Service**
 KATO Express, Inc. (air
 cargo service)***

Lexington, 101 miles northeast
 Campbellsville, 19 miles north

 Elizabethtown, 60 miles northwest

HIGHWAY MILES AND TRUCK TRANSIT TIME IN DAYS FROM
 COLUMBIA, KENTUCKY, TO SELECTED MARKET CENTERS

City	Highway Miles	Delivery		City	Highway Miles	Delivery	
		Time TL				Time TL	
Atlanta, Ga.	365	1		Los Angeles, Ca.	2,158	5	
Baltimore, Md.	642	2		Louisville, Ky.	143	1	
Birmingham, Ala.	329	2		Nashville, Tenn.	133	1	
Chicago, Ill.	435	2		New Orleans, La.	650	2	
Cincinnati, Ohio	179	1		New York, N. Y.	804	3	
Cleveland, Ohio	418	2		Pittsburgh, Pa.	444	2	
Detroit, Mich.	438	2		St. Louis, Mo.	340	2	
Knoxville, Tenn.	172	1					

Note: Mileage computations are via the best interstate or primary highways, not necessarily the most direct route of travel.

Sources: Rand McNally Road Atlas, 1979. Official Kentucky Mileage Map, 1979. Delivery time - Eagle Express Company, 1251 Georgetown Road, P. O. Box 12047, Lexington, Kentucky 40580.

*For regular scheduled pickups or for occasional pickups, arrangements must be made with the Lexington office of the Purolator Courier Corporation.

**For regular scheduled pickups or for occasional pickups, arrangements must be made with the Louisville office of United Parcel Service.

***Daily pickup and delivery service is available to and from Standiford Field in Louisville. Arrangements for service should be made through the home office in Elizabethtown.

Air

Local

Location: Columbia-Adair County Airport
2.5 miles southwest of Columbia
Runways: 1 paved
Length: 2,900 feet
Traffic
Control: Wind sock, tetrahedron
Lighting: Lights on request
Services: 80 octane, taxi, visitors' parking,
air charter and hangars
Air Freight
Service: Chartered air freight services
must be arranged

Nearest Scheduled Commercial Airline Service

Location: Blue Grass Field
4.5 miles west of Lexington, Kentucky;
101 miles northeast of Columbia
Runways: 2 paved
Length: 6,500 feet; 3,500 feet
Traffic
Control: Tower
Lighting: Approach lighting system, beacon,
runways and obstructions lighted,
VASI
Services: Delta, Frontier, Piedmont, and USAir
airlines; Tennessee Airways commuter
air carrier; fuel - 24-hour service,
100, and jet fuel; repair service -
major A & E repairs, Certified Avionics
repair station; National Weather Service;
flight instructions; charter service;
storage; taxi, limousine and car
rentals; restaurant
Air Freight
Service: Air freight terminal

Bus - Southern Greyhound Bus Lines

Taxi - 1 taxi company, 24-hour service, 4 radio-equipped cabs

Rental Services - Bus rental service is available. Car, truck, and
trailer rental services are available at
Campbellsville, 19 miles north of Columbia.

POWER AND FUEL

Electricity

Company serving Columbia and parts of Adair County - Kentucky
Utilities Company

Source of power - Kentucky Utilities Company

Total generating capacity - 2,383,767 KW

For industrial rates contact:

Industrial Development Department
Kentucky Utilities Company
One Quality Street
Lexington, Kentucky 40507
(606) 255-1461

Company serving major portion of Adair County - Taylor County Rural
Electric Cooperative Corporation

Source of power - East Kentucky Power Cooperative

Total generating capacity - 1,318,010 KW

For industrial rates contact:

Industrial Development Division
East Kentucky Power Cooperative
P. O. Box 707
Winchester, Kentucky 40391
(606) 744-4812

and/or

Taylor County RECC
West Main Street
P. O. Box 100
Campbellsville, Kentucky 42718
(502) 465-4101

Natural Gas

Company serving Columbia - Columbia Utilities Commission
Source of supply - Texas Eastern Transmission Corporation
Size of transmission mains - 36 inches (supplier);
3 inches (distributor)
Distribution mains - 1 through 4 inches
Distribution pressure - 7 to 19 psi
Btu content - 1,000 per cubic foot
Specific gravity - 0.60
For rates and supplies contact:

Columbia Utilities Commission
Municipal Building
Columbia, Kentucky 42728
(502) 384-2006

Other Fuels

Propane (Within 15 miles)

B and K Doxol Gas and
Service
Bernerd Ridge
Russell Springs, Kentucky 42642

Russell County Gas Company
Route 5
Russell Springs, Kentucky 42642

Buckeye Gas Products Company
Russell Road
Columbia, Kentucky 42728

Fuel oils

Distillate fuel oil -

Ashland Petroleum Company
East Highway 80
Columbia, Kentucky 42728

Hill Oil Company
802 East Highway 80
Columbia, Kentucky 42728

Chevron USA, Inc.
706 Burkesville Road
Columbia, Kentucky 42728

Sexton Oil Company
Sandusky Street
Columbia, Kentucky 42728

Residual fuel oil - Arrangements must be made with the refinery.

Low sulphur content coal - Available in Kentucky.

WATER AND SEWERAGE

Water

Company serving Columbia - Columbia Utilities Commission*
Municipal Building
Columbia, Kentucky 42728
(502) 384-2006

Source - Russell Creek

Treatment plant capacity - 1,000,000 gallons per day

Average daily consumption - 500,000 gallons

Peak daily consumption - 650,000 gallons

Type treatment - Sedimentation and filtration

Storage capacity - 989,000 gallons

Size lines - 2, 4, 6, and 8 inches

Average pressure - 30 psi

Average temperature - 55 degrees F.

MONTHLY WATER RATES

First	3,000 gallons	\$5.00 (Minimum)
Next	7,000 gallons	1.25 per M gallons
Next	10,000 gallons	1.15 per M gallons
Next	10,000 gallons	1.05 per M gallons
Next	10,000 gallons	1.00 per M gallons
Next	10,000 gallons	.85 per M gallons
All over	50,000 gallons	.65 per M gallons

Tap-on charge:	5/8 x 3/4-inch meter	\$150
	1-inch meter	200
	1 1/2-inch meter	300
	2-inch meter	400
	4-inch meter	800

*An 8-inch main to the city square was completed in the spring of 1981 which increased the pump rate by 200 gallons per minute. Water pressure in the area has been increased and thus better fire protection has been provided.

Name of water district - Adair County Water District*
County Courthouse
Columbia, Kentucky 42728
(502) 384-4096

Area served - Adair County

Date when water district began operating - June 1975

Source of supply of treated water - Columbia Utilities Commission

Average amount of water used in a 24-hour period - 162,000 gallons

Peak amount of water used in a 24-hour period - 250,000 gallons

Storage capacity - 270,720 gallons

Average pressure - 45 psi

Average temperature - 45 degrees F.

Size lines 6 and 8 inches

(Contd.)

*Extensions are planned that will supply service to at least 126 additional users.

MONTHLY WATER RATES

5/8-inch x 3/4-inch meter

First	2,000 gallons	\$ 7.50 (Minimum)
Next	3,000 gallons	2.60 per M gallons
Next	5,000 gallons	2.30 per M gallons
Next	15,000 gallons	2.00 per M gallons
Over	25,000 gallons	1.30 per M gallons

3/4-inch meter

First	3,000 gallons	\$10.10 (Minimum)
Next	2,000 gallons	2.60 per M gallons
Next	5,000 gallons	2.30 per M gallons
Next	15,000 gallons	2.00 per M gallons
Over	25,000 gallons	1.30 per M gallons

1-inch meter

First	5,000 gallons	\$15.30 (Minimum)
Next	5,000 gallons	2.30 per M gallons
Next	15,000 gallons	2.00 per M gallons
Over	25,000 gallons	1.30 per M gallons

1 1/2-inch meter

First	10,000 gallons	\$26.80 (Minimum)
Next	15,000 gallons	2.00 per M gallons
Over	25,000 gallons	1.30 per M gallons

2-inch meter

First	16,000 gallons	\$38.80 (Minimum)
Next	9,000 gallons	2.00 per M gallons
Over	25,000 gallons	1.30 per M gallons

Tap-on charges:

5/8-inch x 3/4-inch meter	\$250
Over 3/4-inch meter	50 plus labor and materials

Raw Water

Surface water sources - Russell Creek

Average discharge - Russell Creek near Columbia, 294 cfs,
(40 years, USGS)

Expected ground water yield - 5 to 50 gpm in the larger portion of
central Adair County (east to west), 5 gpm or less through remainder
of county.

Sewerage

Company serving Columbia - Columbia Utilities Commission
Municipal Building
Columbia, Kentucky 42728
(502) 384-2006

Design capacity - 400,000 gallons per day

Average daily flow - 275,000 gallons

Treatment - Primary and secondary

Type treatment - Aeration, drying beds

Treated effluent discharged into - Russell Creek

Size of sanitary mains - 6, 8, and 10 inches

Monthly rates for all users:

First	3,000 gallons	\$6.23 (Minimum)
Over	3,000 gallons	1.64 per M gallons

Tap-on charge: \$100

CLIMATE

Adair County

Temperature

Normal (30-year record)	59.7 degrees
Average annual 1979	58.3 degrees
Record highest, September 1954 (38-year record)	103.0 degrees
Record lowest, January 1966 (38-year record)	-9.0 degrees
Normal heating degree days (30-year record)	3,478
(Heating degree day totals are the sums of negative departures of average daily temperatures from 65 degrees F.)	

Precipitation

Normal (30-year record)	46.18 inches
Mean annual snowfall (37-year record)	12.70 inches
Total precipitation 1979	53.89 inches
Mean number days precipitation (.01 inch or more) (37-year record)	128
Mean number days thunderstorms (37-year record)	47

Prevailing Winds (14-year record)

Northeast

Relative Humidity (19-year record)

1 a.m.	79 percent
7 a.m.	85 percent
1 p.m.	59 percent
7 p.m.	62 percent

Source: U.S. Department of Commerce, Environmental Science Services Administration, Climatological Data, 1979.
Station of record: Knoxville, Tennessee.

LOCAL GOVERNMENT

City

Structure - Mayor - 4-year term; 6 council members - 2-year terms
Budget - General Fund (1980-81) \$499,429.50
 Water, Sewer, and
 Gas Fund (1979-80) 617,552.49
Fees and licenses - Occupational license fees range from \$10 to \$40,
depending on the type of business.

County

Structure - County Judge/Executive - 4-year term;
7 magistrates - 4-year terms
Budget 1980-81 - General Fund \$270,750; Road Fund \$369,148

Assessed Value of Property, 1980

<u>Classes of Property</u>	<u>Columbia</u>	<u>Adair County</u>
Real Estate	\$33,087,732	\$127,535,830
Tangibles	9,329,133	24,464,499

Property Taxes

All property in Kentucky is assessed at 100 percent of fair cash value.

Land and buildings are taxed by the state and may be taxed by local jurisdictions. The state rate is \$0.241 per \$100 of assessed valuation.

Manufacturing machinery, raw materials inventories, pollution control equipment, and goods in the process of manufacture are not subject to local taxation. The state rate is \$0.15 per \$100.

Other tangible personal property owned by manufacturers (automobiles, trucks, finished goods, office furniture, office equipment) is taxed by the state at \$0.45 per \$100 and may be taxed by local jurisdictions.

Property stored in public warehouses in a transit status is not subject to local taxation. The state rate is only \$0.015 per \$100.

Intangible personal property located in Kentucky (money in hand, shares of stock, notes, bonds, accounts receivable, and other credits) is taxed by the state at \$0.25 per \$100, and is not subject to local taxation.

Private leaseholds in industrial facilities owned by cities or counties and financed by industrial revenue bonds are subject to a state tax of \$0.015 per \$100 of value (essentially the lessee's equity, adjusted for appreciation or depreciation). Local taxation is not permitted.

Combined State and Local Rates Per \$100 Valuation, 1980*
(100% assessment)

	<u>Inside City of Columbia</u>	<u>Outside City</u>
1. Land and buildings	\$1.045	\$0.735
2. Mfg. machinery, raw materials, goods in process, pollution control equipment	0.150	0.150
3. Finished goods, office equipment, vehicles, other tangibles	1.216	0.906
4. Intangibles (accounts receivable, notes, bonds, etc.)	0.250	0.250
5. Leaseholds in industrial revenue bond financed plants	0.015	0.015

Planning and Zoning

A joint city/county planning commission was formed in 1972 and a comprehensive plan was adopted in 1973. The city has appointed the members of the zoning commission; however, the planning commission is inactive at the present time.

Mandatory state codes enforced - Kentucky Plumbing Code, National Electric Code, Kentucky Boiler Regulations and Standards, National Fire Protection Association Standards of Safety (for buildings with an occupancy of less than 100 persons), Kentucky Building Code (modeled after BOCA code and applying to buildings with an occupancy of 100 or more persons)

*Kentucky Department of Commerce.

Safety

<u>Police</u>	<u>Columbia</u>	<u>Adair County</u>
Total staff	8	3
Radio-patrol cars	2	3
<u>Fire</u>		
American Insurance Association Fire Rating	7	10
Volunteers	20	20
<u>Rescue Service</u>		

Adair County Unit of Disaster and Emergency Services, Kentucky Association of Rescue Squads:

Number of volunteers - 80

Equipment - 1 panel truck, 1 ambulance-personnel carrier, 1 heavy-duty truck, 3 four-wheel drive vehicles, portable kitchen, air compressor, 3 boats, air pumps, scuba equipment for 7 people, two-way radio system, porta-power, cutting equipment for wood and metal, first aid supplies, resuscitators, winches, dragging equipment, ropes, axes, shovels, tools, stretchers, blankets, emergency lighting equipment, severe weather shelter, other necessary rescue equipment, scanners set up with Lake Cumberland Control

Personnel training - Disaster and emergency training, first aid, Red Cross scuba diving certification class, cardiopulmonary resuscitation, hazardous materials training

Refuse Collection and Disposal

	<u>Columbia</u>
Type service	Municipal
Fee charged:	
residential	\$3 per month
business	Varies according to volume
industrial	Varies according to volume
Collection frequency:	
residential	Weekly
business	On request
industrial	On request
Trash pickup	As required
Disposal method	City sanitary landfill

EDUCATION

Public Schools

Adair County*

Total Enrollment (December 1980)	2,890
Elementary	2,032
High School	858
Student-Teacher Ratio	18-1
Elementary	18-1
High School	18-1
Percent High School Graduates to College	49.4
Expenditures Per Pupil (1979-80)	\$1,112.02
Bonded Indebtedness (June 30, 1980)	\$1,139,000

*Planned improvements within the Adair County school system include the renovation of the original portion of Adair County High School, the construction of a building for vocational education, and the lighting of the baseball field at Knifley Grade Center.

Area Colleges and Universities

<u>Name</u>	<u>Location (Miles distant)</u>	<u>Enrollment (Fall, 1980)</u>	<u>Highest Degree Conferred</u>
Lindsey Wilson Junior College	Columbia	408	Associate
Campbellsville College	Campbellsville (19)	698	Baccalaureate
Somerset Community College	Somerset (42)	980	Associate
Saint Catharine College	Saint Catharine (50)	243	Associate
Elizabethtown Community College	Elizabethtown (60)	1,930	Associate
Centre College	Danville (63)	749	Baccalaureate
Western Kentucky University	Bowling Green (70)	13,358	Masters, Specialist*

Lindsey Wilson Junior College was established in Columbia in 1903 and through the years, the goals of the college have become well defined.

Lindsey Wilson strives to provide a thorough academic education, as well as purposeful Christian attitudes. It endeavors to bring young men and women together from various backgrounds and give them a college education at a moderate cost. A flexible curriculum is strived for which is consistent with the needs of students who plan to enter the job field after two years of college, as well as those who plan to transfer to a four-year college at the end of two years. Lindsey Wilson also wants to create a mutual awareness and appreciation between the college and the area it serves.

*Joint doctoral degree programs are offered in cooperation with the University of Kentucky, Lexington, and cooperative doctoral degree programs are offered with the University of Louisville.

Vocational Schools

Both the state vocational-technical schools and the area vocational education centers are operated by the Kentucky Department of Education. The state vocational-technical schools enroll persons full time who are at least 16 years of age and not in school. These students attend classes for six hours each day. The area vocational education centers are designed to accommodate high school students who are at least 15 years of age. These students attend vocational school for three hours each day. The state vocational-technical schools and the area education centers offer evening courses to enable working adults to upgrade current job skills.

Nearest State School

Location	Somerset State Vocational- Technical School
Miles Distant	Somerset 42
Curriculum	Business and Office Accounting-Junior Management Clerical Data Processing Secretarial Health and Personal Services Occupations Health Careers Industrial Education Appliance Repair Auto Body Repair Auto Mechanics Aviation Maintenance Technician Diesel Mechanics Drafting Graphic Arts (Printing) Machine Shop Technical Electronics Welding Learning Resource Center

Nearest Area Education Center

Location	Russell County Area
Miles Distant	Vocational Education Center
Curriculum	Russell Springs
	13
	Health and Personal Services Occupations
	Health Careers
	Industrial Education
	Auto Mechanics
	Carpentry
	Residential Electricity
	Welding

Arrangements can be made to provide training in the specific production skills required by an industrial plant. Instruction may be conducted either in the vocational school or in the industrial plant, depending upon the desired arrangement and the availability of special equipment.

HEALTH

Local Medical Personnel

Physicians - 5 medical doctors
 2 surgeons
Dentists - 4

Hospitals

<u>General Hospital</u>	<u>Location</u>	<u>Beds</u>
Westlake Cumberland Hospital	Columbia	65 (not including nursery)

General hospital facilities - Operating room, delivery room, emergency rooms, nursery, X-ray and laboratory, physical therapy, pharmacy, cardiopulmonary services

Medical staff - 16 doctors (active staff), including 1 radiologist, 1 pathologist, and 4 surgeons; 2 internists; 6 family practitioners; 1 urologist; 1 obstetrician/gynecologist; 4 dentists; 1 dietitian

Other Medical Facilities

Lake Cumberland Comprehensive Care Center

Ambulance Service

Name - Adair County Ambulance Service, Division of Lake Cumberland Emergency Medical Services System, Inc.
Staff - 14 full-time emergency medical technicians (1 is a licensed paramedic and 1 is a graduate paramedic); and 2 part-time emergency medical technicians
Service - 24-hour service, county-wide (10-county area also served when needed)
Equipment - 3 ambulances (fully-equipped), 1 ambulance (equipped with a "Jaws of Life" rescue apparatus and additional rescue equipment)

Public Health

Facility - Adair County Health Department
Staff - 1 health environmentalist, 1 registered nurse (full time), 1 public health worker, and 2 clerks

OTHER LOCAL FACILITIES

Communications

Telephone - General Telephone Company
Services - Standard

Telegraph - Western Union
Services - Toll-free number (1-800-325-5100)

Postal - U.S. Post Office
Class - First
Mail received - Once daily
Mail dispatched - Once daily

Newspapers -
Daily and circulation - The Daily Reed Statesman - 3,143
Weekly and circulation - Adair County News - 2,413
Other papers
received from - Louisville, Lexington, Campbellsville and
Russell Springs, Kentucky

Radio - WAIN-AM and FM
Stations received
from - Louisville and Lexington, Kentucky; Nashville, Tennessee

Television -
Cable service
Reception from - Louisville, Lexington, Bowling Green, and
Elizabethtown, Kentucky; Nashville, Tennessee;
Atlanta, Georgia

Kentucky Educational
Television - Elizabethtown transmitter, Channel 9

Library Services

Public library - Adair County Public Library

Size collection - 36,389 volumes

Circulation, 1979-80 - 57,737

Services - Story hours; telephone reference services; services to shut-ins, blind, and handicapped; general reading lists (special subjects upon request); bookmobile; reading guidance and reference assistance; research center; audiovisual equipment, films, records, and filmstrips; community, state, and national interagency referral; special programs (summer reading and other programs); games; framed prints; special programs presented for organizations upon request; tours for groups; program planning based on community resources; service to local hospitals and convalescent homes; copying service (minimum fee)

College library - Katie Murrell Library, Lindsey Wilson Junior College

Size collection - 24,095 volumes

Services - Periodicals, books, and other publications such as catalogs; audiovisual equipment; phonographic records; telephone reference services; reading guidance and reference assistance; general reading list; reference work

Special library - Dora Lee Eubank Wright Research Center

Size collection - 1,100 volumes

Services - Genealogical research service (minimum fee)

Religious Institutions

Number of churches - 22

Denominations - Assembly of God
Baptist
Brethren in Christ
Catholic
Christian
Church of Christ
Church of God
Episcopal
Methodist
Nazarene
Presbyterian
Seventh Day Adventist

Nearest Synagogues - Lexington, 101 miles northeast

Congregations - Adath Israel (reform)
Ohavey Zion (traditional)

Financial Institutions

<u>Banks</u>	<u>Assets</u>	<u>Deposits</u>	<u>Statement Date</u>
Bank of Columbia	\$15,287,592.79	\$13,093,885.10	6/30/80
First National Bank	10,834,000.00	9,248,000.00	6/30/80
<u>Savings and Loan Associations</u>	<u>Assets</u>	<u>Savings Accounts</u>	<u>Statement Date</u>
First Federal Savings and Loan Association*	\$87,958,015.41	\$76,922,094.72	6/30/80

Hotels and Motels

Total number - 3
Total rooms - 50

*Represents total assets and savings accounts of First Federal Savings and Loan Association of Columbia, Campbellsville, Greensburg, and Edmonton, Kentucky.

Clubs and Organizations

Adair County Band Boosters	Future Farmers of America (FFA)
Adair County Council on Aging	Future Homemakers of America (FHA)
Adair County Development Committee	Future Teachers of America (FTA)
Adair County Heritage Association	Girl Scouts
Adair County Historical Society	Homemakers
Adair County Purebred Livestock Association	Independent Senior Citizens
Agriculture Council	Inter-Agency Council
All-Kentucky City Committee	Jayceettes
American Legion	Key Club
American Legion Auxiliary	Kiwanis
Beta Club	Lindsey Wilson College Alumni Association
Boy Scouts	Lions
Business and Professional Women's Club	Little League
Columbia-Adair County Chamber of Commerce	Masonic Lodge
Columbia-Adair County Jaycees	Medical Society
Columbia Baptist Youth Choir	Ministerial Association
Community Choir	National Association for the Advancement of Colored People (NAACP)
Cub Scouts	Pony League
Daughters of the American Revolution	Retail Merchants Association
Dental Society	Retired Teachers
Dora Lee Eubank Wright Research Center	Rotary
Eastern Star	Sportsman Club
4-H	Veterans of Foreign Wars (VFW)
Friends of the Adair County Library	Westlake Cumberland Hospital Women's Auxiliary
	Woman's Club

RECREATION

Local

Columbia offers a variety of recreational facilities and activities. Public facilities available include a park, tennis courts, playgrounds, and four ball fields with a very active schedule of both softball and baseball leagues. There are also church leagues and open leagues for adults in softball and volleyball. Plans are being made for a new mini-park facility in southwest Columbia. Located at the fairgrounds are a swimming pool, a wading pool, basketball courts, tennis courts, a baseball/softball field, a picnic area, croquet courts, a track, and a playground. A football field, softball field, and track are available at Adair County High School.

A private country club in Columbia provides a golf course and swimming pool to its members. Columbia also has an indoor movie theater, a drive-in movie theater, and an amphitheater at Lindsey Wilson Junior College. A variety of dances, including square dances, are organized throughout the year by different groups.

The Christian Life Center was completed in 1980 and consists of facilities for baseball, softball, basketball, and many other outdoor and indoor sports and recreational activities. There are future plans for the construction of a swimming pool at the center.

The largest volunteer activity in Adair County is the Miss Lake Cumberland Scholarship Pageant which is held in Columbia in April of each year. Over \$3,000 in scholarships was given at the 1980 pageant.

Columbia is also the home of the Adair County Fair; the Mark Twain Marching Band Festival; the June Dairy Day; the Fourth of July Celebration; the Lindsey Wilson College Madrigal Dinner; and the Buy, Swap, Sell, and Trade Day on Labor Day.

Another special attraction in Columbia is the Trabue-Russell House which is a historical preservation project of the Adair County Heritage Association. One of the largest rose garden memorials in Kentucky is located at the house.

Area (Within 50 miles)

Green River Lake State Park near Campbellsville, 19 miles north of Columbia, is made up of 1,300 acres surrounding an 8,200-acre lake. The park is open all year-round and offers 96 campsites, a beach, boat docks, fishing, swimming, and a picnic area.

Lake Cumberland State Resort Park at Jamestown, 19 miles southeast of Columbia, is a 3,000-acre park located on the 50,000-acre Lake Cumberland, which sports excellent bass, bluegill, and crappie fishing. The park features a modern resort lodge which is perched on a high bluff above the lake. The lodge has a swimming pool, a dining room, a gift shop, and a multi-purpose convention center. Other park facilities include an additional swimming pool, riding stables, tennis courts, hiking trails, a 9-hole golf course, miniature golf, a picnic area, a playground, a 350-seat amphitheater, and a nature center. A marina offers houseboats, and fishing boats and motors for rent plus year-round launching ramps.

Dale Hollow Lake State Park, approximately 40 miles south of Columbia, is located on 3,497 lakeside acres in southeastern Cumberland County. Park facilities include a marina, a picnic area, and 144 sites for tent and trailer camping. A private resort located on the lake provides facilities for swimming, fishing, boating, and playground activities, and offers cabin and houseboat rentals. Another private campground has tent and trailer camping, houseboat rentals, and a picnic area.

Barren River Lake State Resort Park, approximately 45 miles southwest of Columbia near Glasgow, is a full-facility resort park offering a resort lodge, a coffee shop, cottages, a lodge pool, a beach, riding stables, nature trails, open and covered boat slips, a 9-hole, par-3 golf course, lighted handball and tennis courts, shuffleboard, park camping with a service building, a restaurant, fishing and pleasure boat rentals, picnic areas, and a playground. Barren River Lake, which covers 10,000 acres, is a popular area for skiing, sailing, fishing, and swimming.

Old Mulkey Meeting House State Shrine, 47 miles southwest of Columbia near Tompkinsville, offers picnic areas and playgrounds. The house was built in 1804, and is the oldest log meeting house in the state. Daniel Boone's sister is buried in the graveyard and authentic records written in pokeberry ink are on display.

Abraham Lincoln Birthplace National Historic Site, located 48 miles northwest of Columbia near Hodgenville, features the log cabin, which was the birthplace of Abraham Lincoln, enclosed within a granite memorial shrine. The grounds include 116 acres of the original Thomas Lincoln farm and a visitors' center with audiovisual programs and exhibits on the Lincoln family.

General Burnside State Park, 50 miles east of Columbia, is Kentucky's only island state park. Rising out of Lake Cumberland and surrounded by beautiful Kentucky hills, the park offers excellent fishing, an 18-hole golf course which is open year-round, a picnic area, a 150-site camping area for tents and recreational vehicles, a marina on the mainland near the park, and planned recreation.