

1997

## Industrial Resources: Bourbon County - Paris

Kentucky Library Research Collections  
Western Kentucky University, [spcol@wku.edu](mailto:spcol@wku.edu)

Follow this and additional works at: [https://digitalcommons.wku.edu/bourbon\\_cty](https://digitalcommons.wku.edu/bourbon_cty)

 Part of the [Business Administration, Management, and Operations Commons](#), [Growth and Development Commons](#), and the [Infrastructure Commons](#)

---

### Recommended Citation

Kentucky Library Research Collections, "Industrial Resources: Bourbon County - Paris" (1997). *Bourbon County*. Paper 3.  
[https://digitalcommons.wku.edu/bourbon\\_cty/3](https://digitalcommons.wku.edu/bourbon_cty/3)

This Report is brought to you for free and open access by TopSCHOLAR®. It has been accepted for inclusion in Bourbon County by an authorized administrator of TopSCHOLAR®. For more information, please contact [topscholar@wku.edu](mailto:topscholar@wku.edu).

IR  
974

Boonville Co

# Kentucky

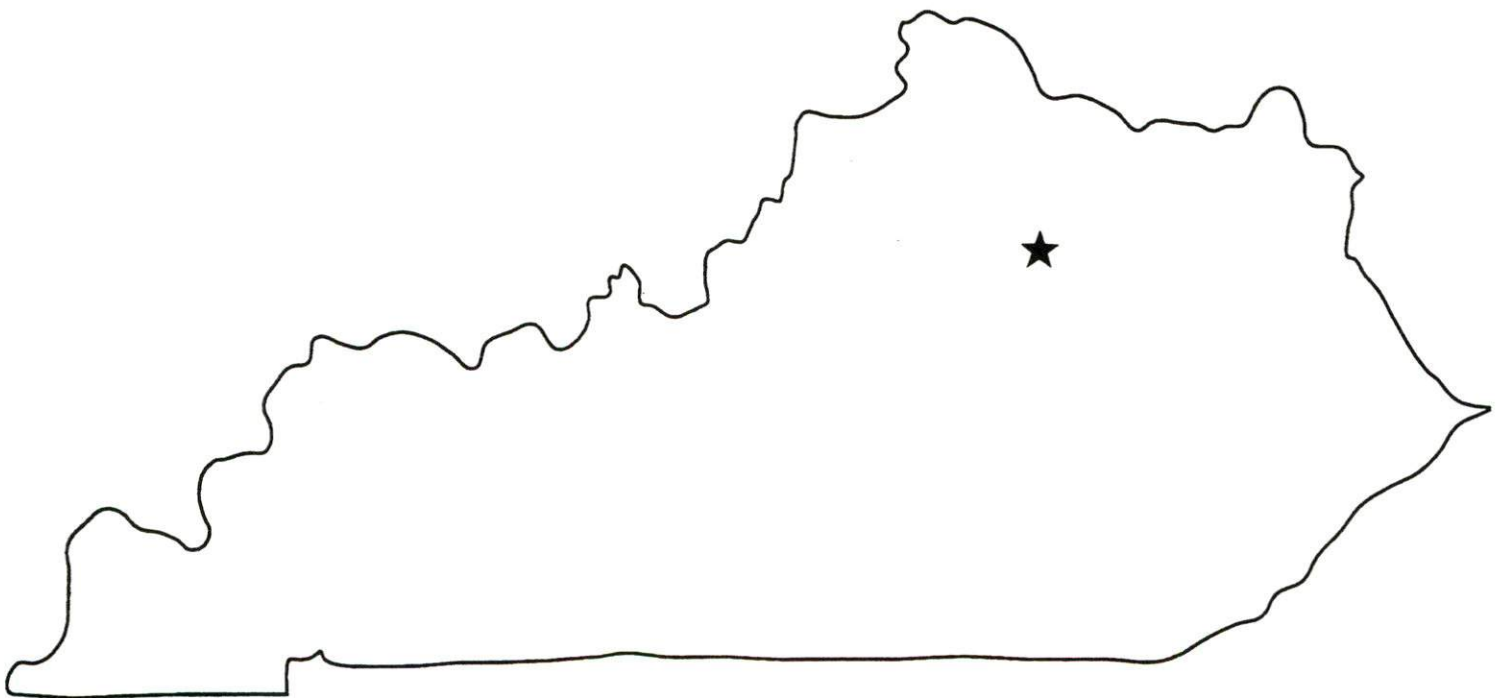
## Resources For Economic Development

Albany  
Barbourville  
Ballard County  
Bardstown • Booneville • Berea  
Bowling Green • Boyd & Greenup Counties  
Bracken County • Brandenburg • Brooksville  
Brownsville • Bullitt County • Burkesville • Cadiz  
Cynthiana • Mt. Vernon • Covington • Crittendon County  
Carrollton • Cave City • Clinton • Columbia • Corbin • Cynthiaiana  
Danville • Dawson Springs • Edmonton • Elizabethtown • Estill County  
Elliott County • Falmouth & Butler • Flemingsburg • Frankfort • Franklin  
Frenchburg • Fulton County • Gallatin County • Georgetown • Grant County • Greensburg  
Grayson & Olive Hill • Glasgow • Hancock County • Harlan County • Harrodsburg • Hart County  
Hazard • Henderson • Henry County • Hodgenville • Hopkinsville-Christian County • Jackson County  
Jackson • Knott County • LaGrange & Buckner • Lancaster • Lawrenceburg • Lebanon • Leitchfield-  
Grayson County • Letcher County • Lexington • Liberty-Casey County • Logan County • Louisville  
London • Louisa • Lyon County • Madisonville & Earlington • Manchester • Marshall County • Mayfield  
Maysville • McCreary County • Marion • McLean County • Middlesboro & Pineville • Monticello • Morehead  
Morgantown • Mt. Sterling • Mt. Vernon • Muhlenberg County • Murray • Nicholasville • Northern Kentucky  
Ohio County • Owensboro • Owenton • Owingsville • Paducah • Paintsville • Paris • Pike County • Powell  
Prestonsburg • Princeton • Radcliff • Richmond • Russell County • Scottsville • Shelbyville • Somerset  
Springfield • Stamping Ground • Stanford-Lincoln County • Tompkinsville & Gamaliel • Taylorsville  
Todd County • Union County • Vanceburg • Versailles • Webster County • West Liberty • Williamsburg  
Winchester, Kentucky

# Kentucky

**Resources For  
Economic Development**

**Paris**



Prepared by  
The Kentucky Cabinet for Economic Development  
Division of Research  
in cooperation with  
Paris-Bourbon County Economic Development Authority  
and  
Paris-Bourbon County Chamber of Commerce

1997

Division Director - Rene' True; program manager - Keith Roberts; research - Keith Roberts; clerical - Wanda Sharp; graphics - Robert Owens. Cost of printing paid from state funds.

## TABLE OF CONTENTS

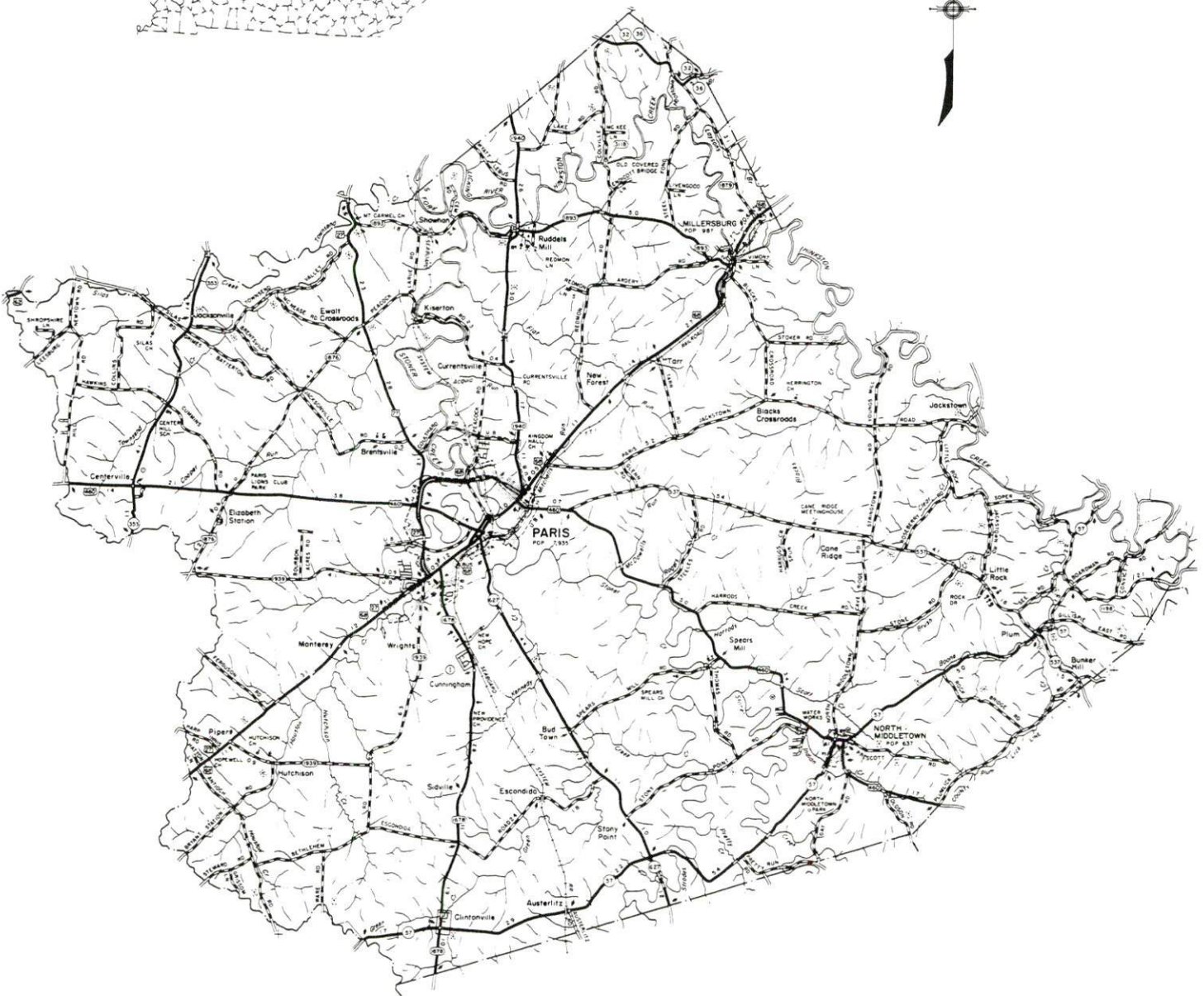
<u>Chapter</u>	<u>Page</u>
PARIS, KENTUCKY-A RESOURCE PROFILE.....	1
THE LABOR MARKET STATISTICS.....	2
Labor Market Area Map.....	2
Population.....	3
Population Projections.....	3
Estimated Labor Supply.....	3
Labor Force Characteristics of Residents, 1995.....	4
Selected Components of Nonagricultural Employment, by Place of Work, 1995.....	5
Per Capita Personal Income.....	6
Average Placement Wages.....	7
Average Weekly Wages of Workers Covered by Unemployment Insurance 1994 - Bar Chart.....	8
Average Weekly Wages by Industry, by Place of Work, 1994.....	9
EXISTING INDUSTRY.....	10
Bourbon County Manufacturing Firms, Their Products and Employment.....	10
Recent Industrial Developments.....	11
Labor Organizations in Manufacturing Firms.....	11
Selected Industrial Services.....	11
TRANSPORTATION.....	12
Highways.....	12
Truck Service.....	12
Selected Market Location Map.....	13
Rail.....	14
Air.....	14
UTILITIES.....	16
Electricity.....	16
Natural Gas.....	16
Public Water Supply.....	17
Sewerage.....	17
CLIMATE.....	18

<u>Chapter</u>	<u>Page</u>
LOCAL GOVERNMENT.....	19
Structure.....	19
Planning and Zoning.....	19
Local Fees and Licenses.....	19
State and Local Property Taxes.....	20
EDUCATION.....	21
Public Schools.....	21
Nonpublic Schools.....	21
Area Colleges and Universities.....	21
Vocational Training.....	22
OTHER LOCAL FACILITIES.....	24
Local Medical Personnel.....	24
Hospitals.....	24
Other Medical Facilities and Services.....	24
Banks and Savings & Loan Associations.....	24
Newspapers.....	24
Telephone Service.....	24
RECREATION.....	25



GENERAL HIGHWAY MAP  
**BOURBON COUNTY**  
KENTUCKY

PREPARED BY THE  
KENTUCKY TRANSPORTATION CABINET  
DEPARTMENT OF HIGHWAYS  
DIVISION OF PLANNING  
IN COOPERATION WITH THE  
U.S. DEPARTMENT OF TRANSPORTATION  
FEDERAL HIGHWAY ADMINISTRATION



## PARIS, KENTUCKY - A RESOURCE PROFILE

Paris, the county seat of Bourbon County, is located in central Kentucky's Bluegrass Region, an area famous for its many beautiful horse farms and its gently-rolling topography. The city is located 19 miles northeast of Lexington, Kentucky; 84 miles south of Cincinnati, Ohio; and 191 miles north of Knoxville, Tennessee. Paris had an estimated 1994 population of 8,928.

Bourbon County has a land area of 291 square miles and had an estimated 1994 population of 19,224.

**The Economic Framework** - The total number of Bourbon County residents employed in 1995 averaged 9,400. Manufacturing firms in the county reported 1,323 employees; wholesale and retail trade provided 1,479 jobs; 826 people were employed in service occupations; state and local government accounted for 853 employees; and contract construction firms provided 359 jobs.

**Labor Supply** - There is a current estimated labor supply of 9,415 persons available for industrial jobs in the labor market area. In addition, from 1997 through 2001, 23,320 young persons in the area will become 18 years of age and potentially available for industrial jobs.

**Transportation** - Paris is served by U.S. Highways 27, 68, 460, and Kentucky Route 627, all of which are AAA-rated trucking highways. Twenty-nine trucking firms provide service to Paris. CSX Transportation and TransKentucky Transportation Railroad provide main line rail service. The Georgetown-Scott County Regional Airport, ten miles west of Paris, and the Cynthiana-Harrison County Airport, fourteen miles north, are the nearest small craft airports. The nearest scheduled commercial airline service is available at Blue Grass Airport near Lexington, Kentucky, 23 miles southwest of Paris.

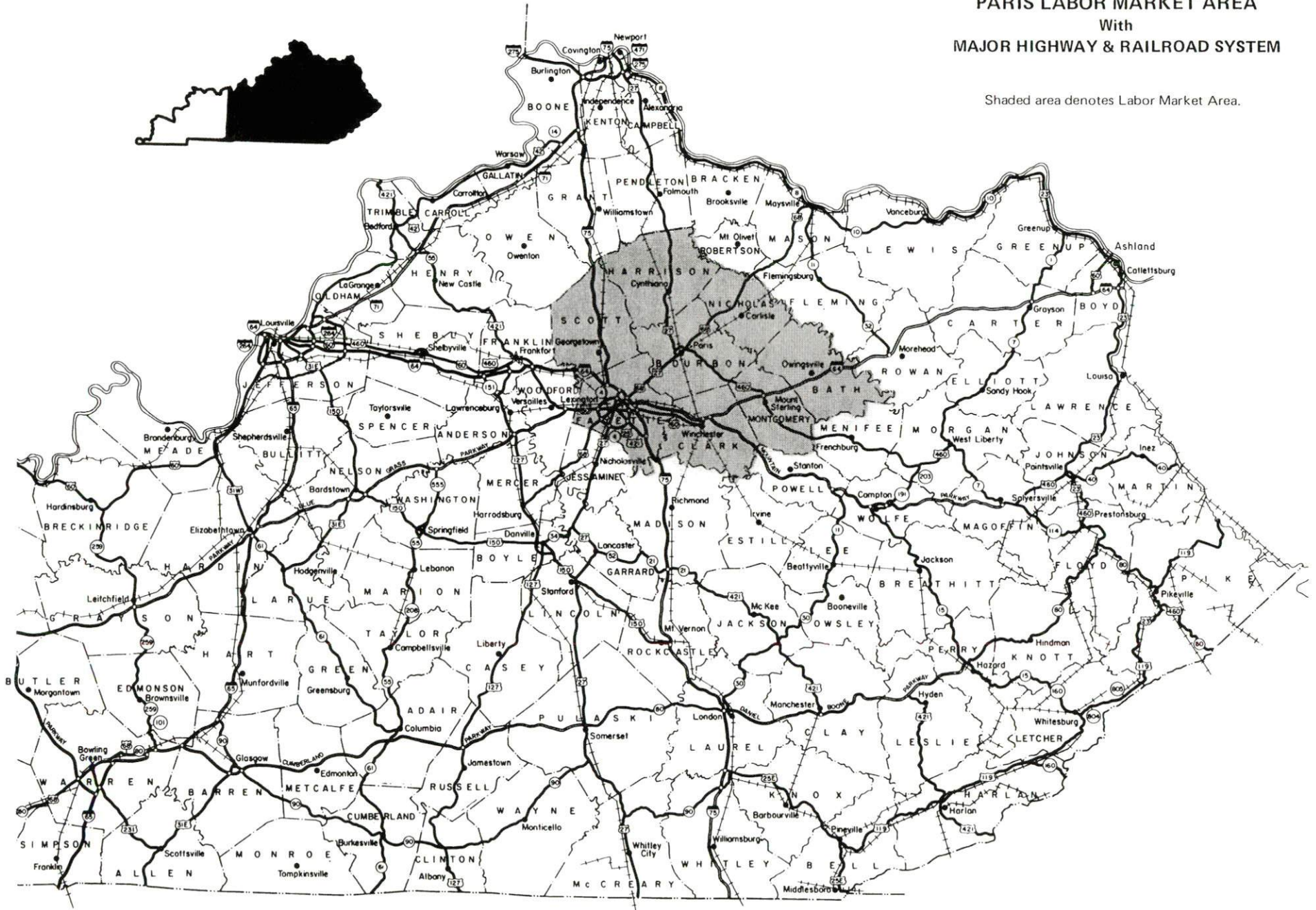
**Power and Fuel** - Paris receives electric power from the City of Paris Combined Utilities Company and Kentucky Utilities (the two companies interchange electric power). Clark Rural Electric Cooperative and Harrison Rural Electric Cooperative Corporation provide electric power to Bourbon County. Natural gas service is provided to Paris by Columbia Gas of Kentucky.

**Education** - Primary and secondary education is provided by the Paris Independent School System and by the Bourbon County School System. Both school systems are accredited by the Southern Association of Colleges and Schools. Three non-public schools also operate in Bourbon County. There are twelve institutions of higher learning located within 60 miles of Paris. Vocational training facilities are available within 19 miles of Paris at Cynthiana and Lexington.



# PARIS LABOR MARKET AREA With MAJOR HIGHWAY & RAILROAD SYSTEM

Shaded area denotes Labor Market Area.



## LABOR MARKET STATISTICS

The Paris Labor Market Area includes Bourbon County and the adjoining Kentucky counties of Bath, Clark, Fayette, Harrison, Montgomery, Nicholas, and Scott.

### POPULATION

	<u>1994*</u>	<u>1990</u>	<u>1980</u>	<u>1970</u>
Labor Market Area	368,655	350,191	326,099	280,102
Paris	8,928	8,730	7,935	7,823
Bourbon County	19,224	19,236	19,405	18,476

\*Population estimates.

Source: U.S. Department of Commerce, Bureau of the Census.

### POPULATION PROJECTIONS

	<u>2000</u>	<u>2010</u>	<u>2020</u>
Labor Market Area	399,299	437,478	471,204
Bourbon County	20,303	21,612	22,676

Note: Population projections are from High Growth Series forecast.

Source: University of Louisville, Urban Studies Center, State Data Center.

### ESTIMATED LABOR SUPPLY

	Current			Future
	<u>Total</u>	<u>Unemployed</u>	Not in Labor Force	Becoming 18 years of age <u>1997 thru 2001</u>
Labor Market Area*	9,415	6,762	2,653	23,320
Bourbon County	678	287	391	1,412

\* Additional workers may be drawn from other nearby counties.

Note: Unemployed - persons unemployed and actively seeking work; Not in Labor Force - represents the number of persons who would enter the labor force if suitable employment were available (based on the assumption that persons in Kentucky would like to participate in the labor force in the same proportion that they do nationally). Underemployed persons (employed only 14 to 26 weeks during the year) are no longer included in labor surplus estimates.

Sources: Kentucky Workforce Development Cabinet, Kentucky Labor Surplus Estimates by County, 1995. Kentucky Cabinet for Economic Development, Future Labor Supply Becoming 18 Years of Age, 1997 thru 2001.

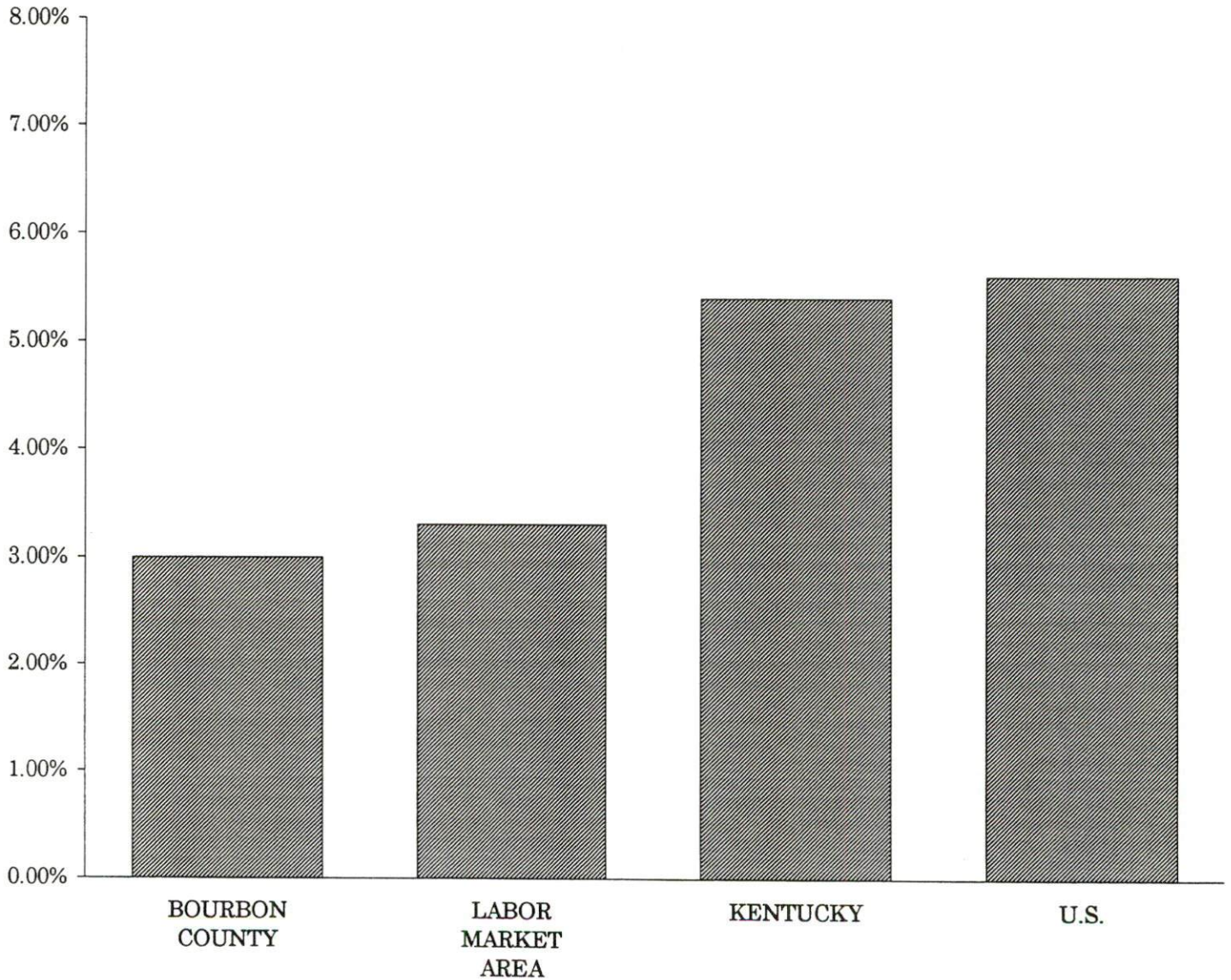


LABOR FORCE CHARACTERISTICS OF RESIDENTS, 1995

	<u>Bourbon County</u>	<u>Labor Market Area</u>
Civilian Labor Force	9,687	203,061
Employment	9,400	196,299
Unemployment	287	6,762
Rate of Unemployment (%)	3.0	3.3

Source: Kentucky Workforce Development Cabinet, Kentucky Labor Force Estimates, Annual Averages 1995.

UNEMPLOYMENT RATES  
1995



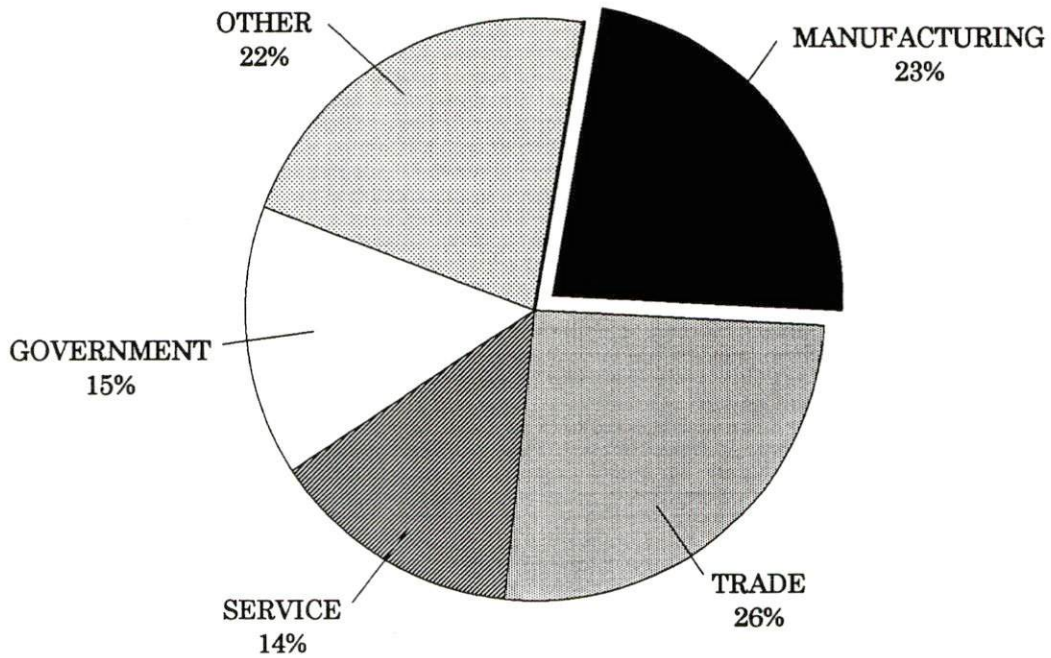
SELECTED COMPONENTS OF NONAGRICULTURAL EMPLOYMENT  
BY PLACE OF WORK, 1995

	<u>Bourbon County</u>	<u>Labor Market Area</u>
All Industries (total)	5,773	198,559
Manufacturing	1,323	36,699
Wholesale & Retail Trade	1,479	49,949
Services	826	51,190
State/Local Government	853	29,610
Contract Construction	359	9,127

**Note:** Excludes domestic workers, railway workers, certain nonprofit corporations, majority of federal government workers, and self-employed workers.

**Source:** Kentucky Workforce Development Cabinet, Average Monthly Workers Covered by Kentucky Unemployment Insurance Law, 1995.

BOURBON COUNTY



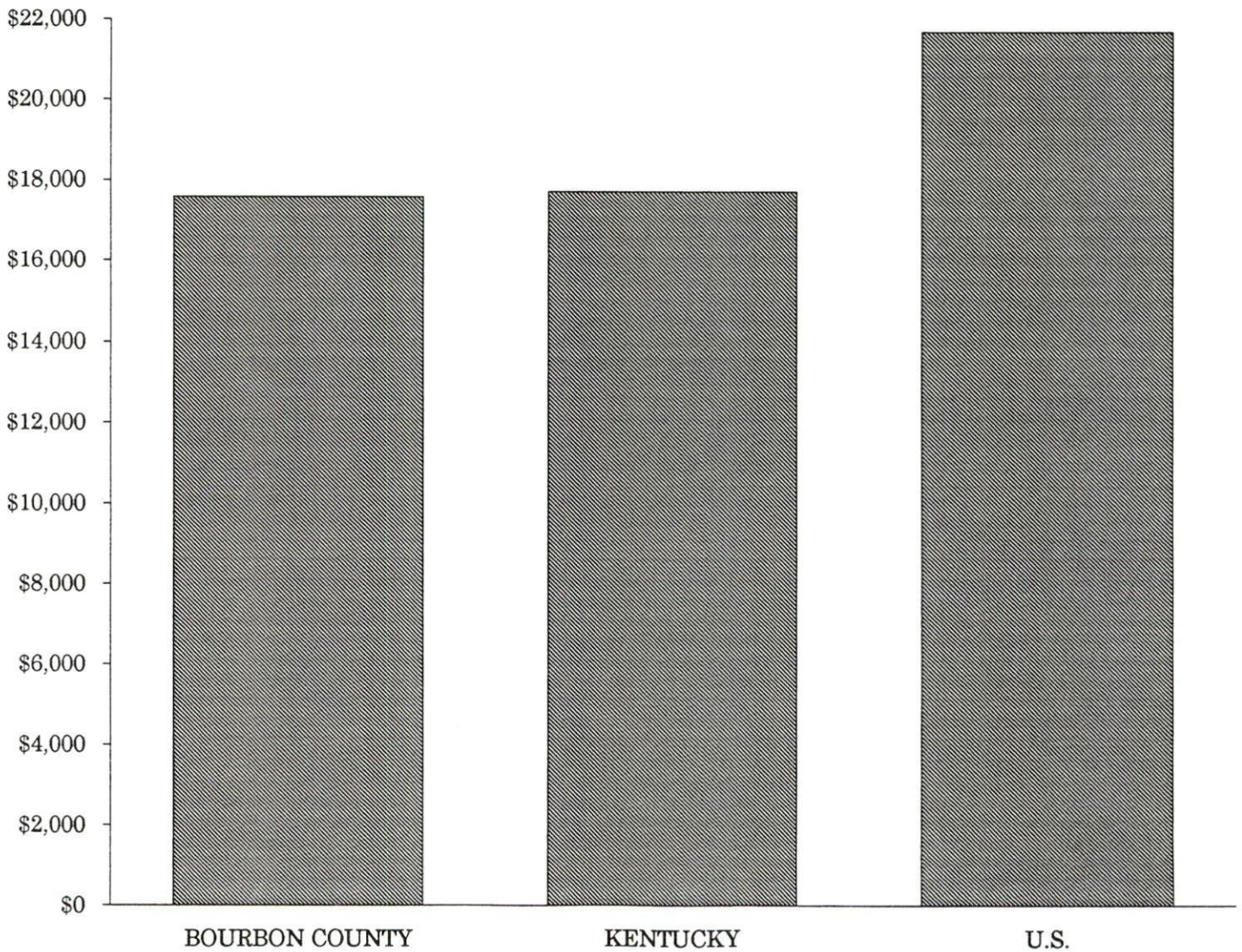


PER CAPITA PERSONAL INCOME

<u>Area</u>	<u>1990</u>	<u>1994</u>	<u>Percent Change</u>
Bourbon County	\$14,675	\$17,586	19.8
Labor Market Area Range	\$11,243 - \$19,361	\$13,354 - \$22,235	-
Kentucky	\$14,747	\$17,721	20.2
U.S.	\$18,666	\$21,696	16.2

**Source:** U.S. Department of Commerce, Bureau of Economic Analysis, Regional Economic Information System.

PER CAPITA PERSONAL INCOME  
1994





## AVERAGE PLACEMENT WAGES

---

Bourbon County is served by the Georgetown local office of the Kentucky Department for Employment Services. The focus of the following data is on job placements made by the Georgetown local office and may therefore be used as an indicator of the wages which employers in the area pay new employees. During the twelve months which ended on June 30, 1996, the local employment office filled 3,048 job openings in various occupational categories. The average hourly wage for selected occupational categories were:

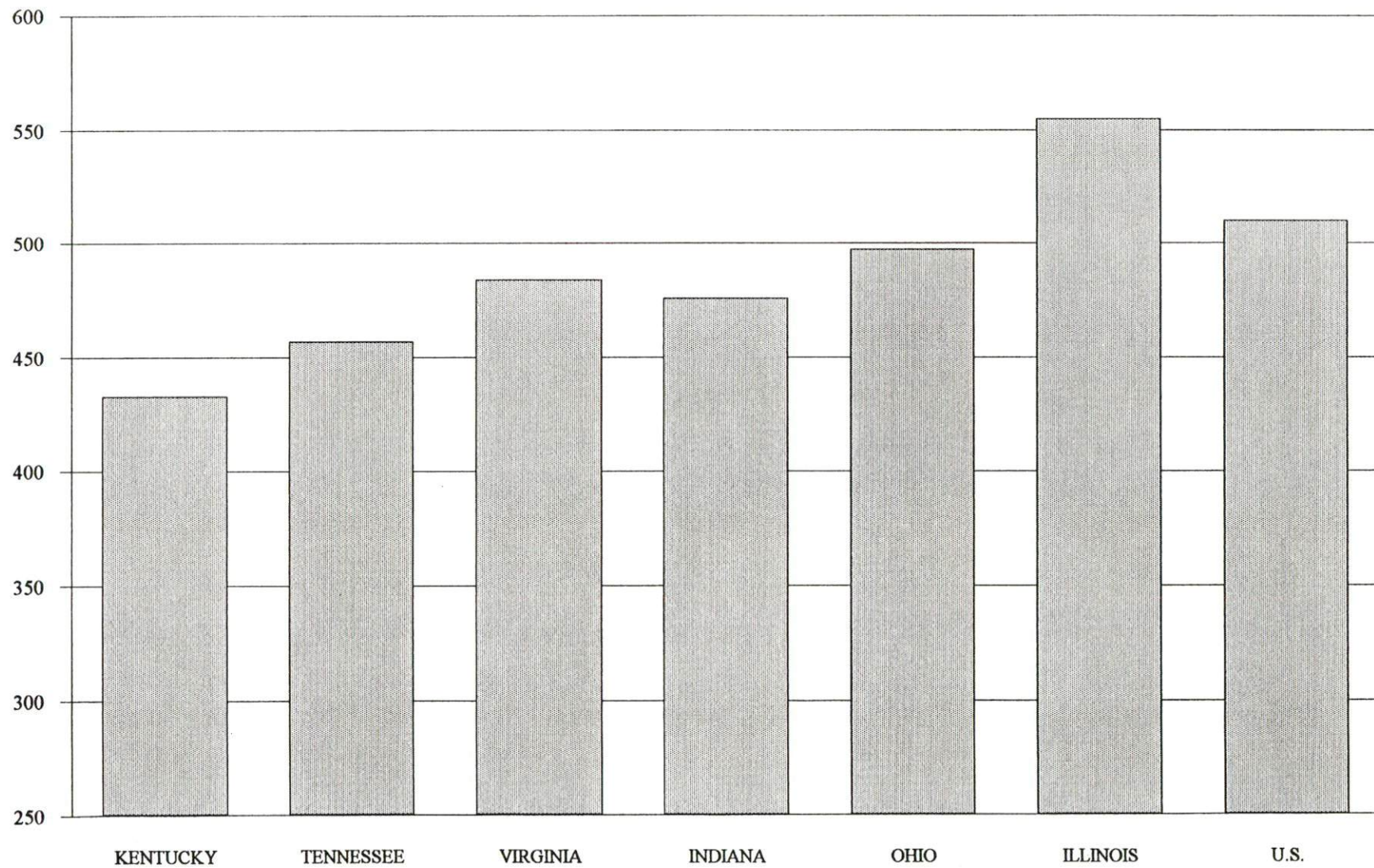
<u>OCCUPATIONAL CATEGORY</u>	<u>NUMBER OF PLACEMENTS</u>	<u>AVERAGE WAGE(\$)</u>
All Occupations	3,048	7.41
Clerical	60	6.26
Sales	6	4.54
Services (excluding domestic)	1,359	6.96
Agricultural, Fishery, Forestry, etc.	28	5.85
Processing	46	6.90
Machine Trades	261	7.65
Bench Work	889	6.81
Structural	183	12.25
Motor Freight/ Transportation	108	11.12
Packaging and Materials Handling	91	7.05
Other	1	8.00

The Georgetown local office also serves Harrison, Nicholas, and Scott Counties. The above occupational categories are taken from the Dictionary of Occupational Titles published by the U.S. Department of Labor.

---

**Source:** Kentucky Workforce Development Cabinet, Department for Employment Services.

**AVERAGE WEEKLY WAGES OF WORKERS COVERED BY  
UNEMPLOYMENT INSURANCE - 1994**



AVERAGE WEEKLY WAGES BY INDUSTRY  
BY PLACE OF WORK, 1994\*

	<u>Bourbon County</u>	<u>Kentucky (Statewide)</u>	<u>Tennessee</u>	<u>Virginia</u>
All Industries	\$390.61	\$432.45	\$457.00	\$484.00
Mining & Quarrying	N/A	724.79	638.00	721.00
Contract Construction	514.61	457.02	485.00	476.00
Manufacturing	539.19	560.04	540.00	565.00
Transportation, Communications & Public Utilities	504.24	573.31	588.00	673.00
Wholesale & Retail Trade	295.05	297.57	N/A	N/A
Finance, Insurance & Real Estate	460.02	521.15	585.00	609.00
Services	282.21	385.62	434.00	501.00
State/Local Government	403.71	441.53	N/A	N/A
	<u>Indiana</u>	<u>Ohio</u>	<u>Illinois</u>	<u>U. S.</u>
All Industries	\$476.00	\$497.00	\$555.00	\$510.00
Mining & Quarrying	771.00	682.00	815.00	839.00
Contract Construction	538.00	549.00	681.00	544.00
Manufacturing	653.00	701.00	692.00	645.00
Transportation, Communications & Public Utilities	581.00	619.00	694.00	658.00
Wholesale & Retail Trade	N/A	N/A	N/A	N/A
Finance, Insurance & Real Estate	557.00	572.00	764.00	693.00
Services	400.00	433.00	501.00	483.00
State/Local Government	N/A	N/A	N/A	N/A

\* Wages for U.S. and surrounding states rounded to nearest dollar.

N/A Not Available.

**Note:** The average weekly wage for each category includes the salaries and wages of all persons working for that type business. For example, the manufacturing category includes both production workers and administrative personnel. Excludes domestic workers, railway workers, certain nonprofit corporations, majority of federal government workers, and self-employed workers.

**Sources:** Kentucky Workforce Development Cabinet, Average Weekly Wages of Workers Covered by Kentucky Unemployment Insurance Law, 1994. U.S. Department of Labor, Bureau of Labor Statistics, Employment and Wages, Annual Averages, 1994, November 1995.



## EXISTING INDUSTRY

### BOURBON COUNTY MANUFACTURING FIRMS, THEIR PRODUCTS AND EMPLOYMENT

<u>Firm</u> (Establishment date)	<u>Product</u>	1996 <u>Average Employment</u>
<b><u>Paris</u></b>		
Accutran (1988)	Light assembly, packaging	50
Ad Graphics (1995)	Commercial printing	3
Apex Enterprises, Inc. (1973)	Tool & die	9
Bluegrass Ready Mix (1989)	Ready-mixed concrete	4
Bourbon Graphics, Inc. (1984)	Commercial printing	3
Central Light Alloy (1989)	Aluminum wheels and discs	75
Central Manufacturing Company (1988)	Auto wheels	270
The Citizen Advertiser, Inc. (1807)	Newspaper publishing, job printing	14
Hinkle Contracting Corporation (1962)	Asphalt	3
I.T.W. Ramset/Red Head (1979)	Fastening systems, stud guns	75
Kentucky Textiles, Inc. (1981)	Knit sweat pants, tops, men's, boys' & women's swimwear	650
Mallinckrodt Baker, Inc. (1978)	Inorganic chemicals, organic chemicals	225
Paris Machining Company (1972)	Steering arms, axle components, non-electrical computer hardware, small assembly	90
Quillin Leather & Tack, Kentucky Graziers Supply (1979)	Tack and halters, leather goods	6
TS Engineering (1987)	Hydraulic components, couplings, machining	10
Weatherly Consumer Products (1972)	Fertilizer spikes	70
<b><u>Millersburg</u></b>		
Dr. A.B. Plummer Products Company, Inc. (1954)	Hoof conditioner, animal salves, antiseptics	1
Stamler Corporation (1953)	Hydraulic mine & railroad car movers, conveyer belt feeder-breakers	130

**Sources:** Kentucky Cabinet for Economic Development, Division of Research; Paris-Bourbon County Economic Development Authority.

## RECENT INDUSTRIAL DEVELOPMENTS

A new economic development organization, the Paris-Bourbon County Economic Development Authority, was formed in 1996. The organization is composed of concerned citizens who are employed by local government, private business, banking, and local economic development groups.

A new 80-acre industrial site was recently purchased by the local governments of Paris and Bourbon County. Infrastructure construction is under way and is scheduled to be complete in the Spring 1997.

## LABOR ORGANIZATIONS IN MANUFACTURING FIRMS

There are presently no labor unions representing manufacturing workers in Paris.

## SELECTED INDUSTRIAL SERVICES

---

---

<u>Types of Services</u>	<u>Location</u>	<u>Mileage from Paris</u>
Custom Plastics Producers	Georgetown, Kentucky	18
	Lexington, Kentucky	19
Electric Motor Repair	Winchester, Kentucky	17
	Lexington, Kentucky	19
Heat Treating Facilities	Georgetown, Kentucky	18
	Lexington, Kentucky	19
Industrial Waste Removal	Georgetown, Kentucky	18
	Lexington, Kentucky	19
Machine Shops, Tool & Die	Paris, Kentucky	-
Metal Castings	Cynthiana, Kentucky	15
Metal Finishers	Georgetown, Kentucky	18
	Lexington, Kentucky	19
Metal Service Centers	Winchester, Kentucky	17
	Lexington, Kentucky	19
Millwrights & Riggers	Lexington, Kentucky	19

---

**Source:** Kentucky Cabinet for Economic Development, Division of Research.



## TRANSPORTATION

### Highways

Paris is served by U.S. Highways 27, 68, 460, and Kentucky Route 627. All are AAA-rated (80,000-pound gross load limit) trucking highways. Kentucky Route 1940 a AA-rated (62,000-pound gross load limit) trucking highway also provides service to Paris. Interstate 75 can be accessed near Georgetown, sixteen miles west of Paris. Interstate 64 can be accessed near Lexington, fifteen miles southwest of Paris.

Reconstruction of U.S. Highway 27/68, between Paris and Lexington, is scheduled to begin in the spring of 1997. When completed, the highway will provide four-lane access to Lexington and the Interstate system.

#### HIGHWAY MILES FROM PARIS, KENTUCKY, TO SELECTED MARKET CENTERS

City	Highway Miles	City	Highway Miles
Atlanta, GA	383	Los Angeles, CA	2,178
Baltimore, MD	524	Louisville, KY	92
Birmingham, AL	415	Nashville, TN	229
Chicago, IL	365	New Orleans, LA	749
Cincinnati, OH	84	New York, NY	722
Cleveland, OH	331	Pittsburgh, PA	361
Detroit, MI	342	St. Louis, MO	350
Knoxville, TN	191		

**Note:** Mileage computations are via the best interstate or primary highways, not necessarily the most direct route of travel.

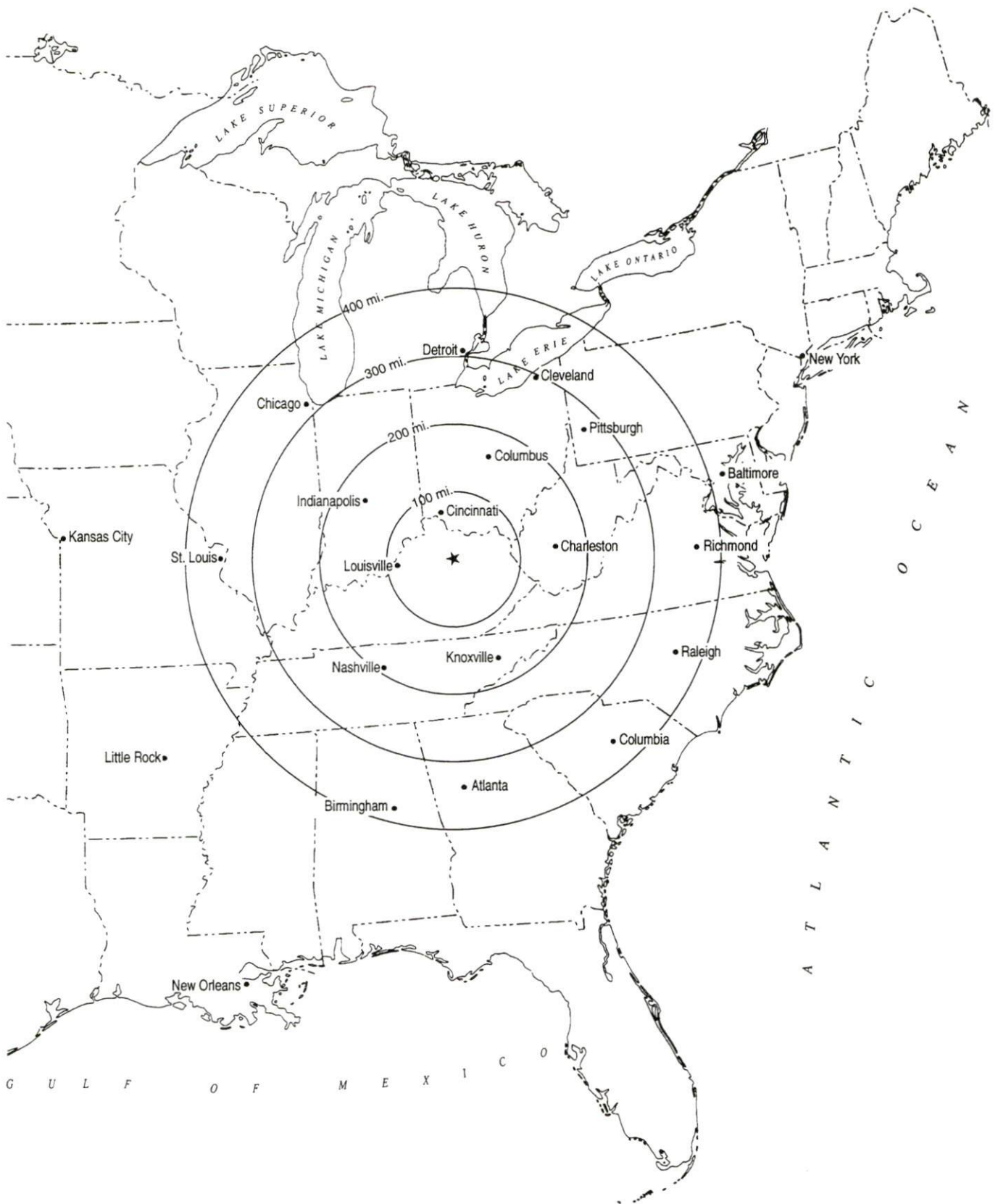
**Sources:** Rand McNally Standard Highway Mileage Guide, 1990. Official Kentucky Mileage Map, 1988.

### Truck Service

Twenty-nine common carrier trucking companies provide interstate and/or intrastate service to Paris. Roeder Cartage maintains a terminal and warehousing facility in Paris. The company specializes in hazardous waste hauling.

**Source:** American Motor Carrier Directory, Fall 1996; Paris/Bourbon County Economic Development Authority.

# Selected Market Centers



## Rail

Main line rail service is provided to Paris by CSX Transportation and by TransKentucky Transportation Railroad, a connecting line extending from Paris to Maysville. The nearest intermodal facility is located at Georgetown, 18 miles west of Paris, and is operated by the Norfolk Southern Corporation.

For details on routing, schedules, rates, and services contact:

Manager  
Industrial Development  
CSX Transportation  
9420 Bunsen Parkway  
Suite 212  
Louisville, Kentucky 40220  
(502) 499-3025

and/or

President  
TransKentucky Transportation  
Railroad (TTI)  
105 Winchester Street  
Paris, Kentucky 40631  
(606) 987-1589

## Air

### Nearest Small Craft Airports

	Marshall Field (Georgetown-Scott County Regional Airport)
Location:	10 miles west of Paris
Runways:	1 paved
Length:	4,000 feet
Traffic	
Control:	Wind sock, unicom 122.9 or 123.0
Lighting:	Lighted wind cone, rotating beacon, PAPI, REIL, MIRL, MITL
Services	100LL octane and jet-A fuels, tie-downs, flight instruction, major A & P repairs, rental car, ultralight and balloon training
	Cynthiana-Harrison County Airport
Location:	14 miles north of Paris
Runways:	1 paved
Length:	3,200 feet
Traffic	
Control:	Wind sock and lighted wind tee
Lighting:	Runway lights-sundown to sunrise, VASI REIL, RTGBCN
Services:	80 and 100LL fuel; major A & P repairs; hangars, tie-downs; taxi; A & I service, painting

Nearest Scheduled Commercial Airline Service

Location:	Blue Grass Airport 4 miles west of Lexington, Kentucky; 23 miles southwest of Paris
Air Service:	American Eagle, ASA, Comair, Delta, Northwest Airlinck, TW Express, United Express, USAir, USAir Express
Daily Arrivals & Departures:	110

## UTILITIES

### Electricity

Company serving **parts of Paris** - City of Paris Combined Utilities  
Source of power - City of Paris Combined Utilities and Kentucky Utilities Company  
For industrial rates contact:

City of Paris Combined Utilities  
525 High Street  
Paris, Kentucky 40361-1790  
(606) 987-2110

and/or

Economic Development Department  
Kentucky Utilities Company  
One Quality Street  
Lexington, Kentucky 40507  
(606) 255-2100

Company serving **parts of Paris and Bourbon County** - Kentucky Utilities Company  
Source of power - Kentucky Utilities Company  
For industrial rates contact:

Economic Development Department  
Kentucky Utilities Company  
One Quality Street  
Lexington, Kentucky 40507  
(606) 255-2100

Company serving **parts of Bourbon County** - Clark Rural Electric Cooperative and Harrison  
Rural Electric Cooperative Corporation  
Source of power - East Kentucky Power  
For industrial rates contact:

Industrial Development Department  
East Kentucky Power  
P.O. Box 707  
Winchester, Kentucky 40392-0707  
(606) 744-4812

### Natural Gas

Company serving **Paris** - Columbia Gas of Kentucky, Inc.  
Source of supply - Columbia Gas Transmission Corporation  
For rates and supplies contact:

Economic Development Department  
Columbia Gas of Kentucky  
70 Fountain Place  
Frankfort, Kentucky 40601  
(502) 227-4997 Fax (502) 227-7645



## Public Water Supply

Company serving **Paris** - City of Paris Combined Utilities  
525 High Street  
Paris, Kentucky 40361  
(606) 987-2110 Fax (606) 987-4640

Source - Stoner Creek  
Treatment plant capacity- 3,000,000 gallons per day  
Average daily consumption - 1,400,000 gallons  
Peak daily consumption - 2,000,000 gallons  
Storage capacity - 3,000,000 gallons  
Water pressure - 40 psi to 100 psi

## Sewerage

Company serving **Paris** - City of Paris Combined Utilities  
525 High Street  
Paris, Kentucky 40361  
(606) 987-2110 Fax (606) 987-4640

Design capacity - 2,200,000 gallons per day  
Average daily flow - 1,700,000 gallons  
Type of treatment - Secondary  
Treated effluent discharged into - Stoner Creek

## CLIMATE

### Bourbon County

Normal (29-year record)	54.90 degrees
Average annual 1995	54.90 degrees
Record highest, July 1988 (51-year record)	103.00 degrees
Record lowest, January 1963 (51-year record)	-21.00 degrees
Normal heating degree days (29-year record)	4,783
(Heating degree day totals are the sums of negative departures of average daily temperatures from 65 degrees F.)	

### Precipitation

Normal (29-year record)	44.55 inches
Mean annual snowfall (50-year record)	15.80 inches
Total precipitation 1995	50.08 inches
Mean number days precipitation (.01 inch or more) (51-year record)	129.60
Mean number days thunderstorms (51-year record)	44.40

Prevailing Winds (through 1963) South

### Relative Humidity (31-year record)

1 a.m.	78 percent (31-year record)
7 a.m.	82 percent (32-year record)
1 p.m.	60 percent (32-year record)
7 p.m.	64 percent (32-year record)

**Source:** U.S. Department of Commerce, Environmental Science Services Administration, Climatological Data, 1995. Station of record: Lexington, Kentucky.

## LOCAL GOVERNMENT

### Structure

The City of Paris is served by a mayor, four commissioners, and a city manager. Bourbon County is served by a county judge/executive and seven magistrates.

### Planning and Zoning

Joint agency - Paris - Bourbon County Joint Planning Commission  
Participating cities - Paris, North Middletown, Millersburg  
Zoning enforced - All areas  
Subdivision regulations enforced - All areas  
Local codes enforced - Building and housing (All areas)  
Mandatory state codes enforced - Kentucky Plumbing Code, National  
Electric Code, Kentucky Boiler Regulations and Standards, Kentucky  
Building Code (modeled after BOCA code)

### Local Fees and Licenses

The City of Paris levies an occupational license tax of one and one-half percent on gross salaries, wages, commissions, and other compensation earned by individuals for work done or services performed in the city and on net profits of all businesses. Annual business license fees ranging from \$25 to \$500 are assessed on businesses in Paris.

Bourbon County levies an occupational license tax of 0.75 percent on gross salaries, wages, commissions, and other compensation earned by individuals and on net profits of businesses.

**PROPERTY TAXES**

The Kentucky Constitution requires the state to tax all classes of taxable property, and state statutes allow local jurisdictions to tax only a few classes. All locally taxed property is subject to county taxes and school district taxes (either a county school district or an independent school district). Property located inside of city limits may also be subject to city property taxes.

Special local taxing jurisdictions (fire protection districts, watershed districts, and sanitation districts) levy taxes within their operating areas (usually a small portion of community or county).

Property assessments in Kentucky are at 100% fair cash value. Accounts receivable are taxed at 85% of face value.

**STATE PROPERTY TAX RATES PER \$100 VALUATION**

<u>Selected Classes of Property</u>	1995 <u>State Rate</u>	Local Taxation <u>Permitted</u>
Real Estate	\$0.167	YES
Manufacturing Machinery	0.150	NO
Pollution Control Equipment	0.150	NO
Inventories		
Raw Materials	0.050	NO
Goods in Process	0.050	NO
Finished Goods	0.050	YES
Motor Vehicles	0.450	YES
Other Tangible Personal Property	0.450	YES
Intangibles (Accounts Receivable, Money on Hand)	0.250	NO

**LOCAL PROPERTY TAX RATES PER \$100 VALUATION, 1995**

<u>Taxing Jurisdiction</u>	<u>Real Estate</u>	<u>Finished Goods &amp; Tangibles</u>	<u>Motor Vehicles</u>
Bourbon County	\$0.2239	\$0.2173	\$0.2360
School Districts:			
Bourbon County	0.4530	0.4530	0.5470
Paris Independent	0.5460	0.5590	0.5530
Cities:			
Paris	0.1400	0.1400	0.1700



## EDUCATION

### Public Schools

	<b>Paris Independent</b>	<b>Bourbon County</b>
Total Enrollment (Fall, 1995)	842	2,713
Accreditation	Southern Association of Colleges and Schools	Southern Association of Colleges and Schools
Pupil-Teacher Ratio (1993-94)	15.1-1	17.6-1
Percent High School Graduates to College (1993-94)	42.8	47.3
Expenditures Per Pupil (1993-94)	\$3,926.77	\$3,977.46

### Nonpublic Schools

<u>School</u>	<u>Enrollment</u>	<u>Grades</u>
Meteer School	75	Preschool
Millersburg Military Institute (Millersburg)	48	6-12
St. Mary's School	74	1-6

### Area Colleges and Universities

<u>Name</u>	<u>Location (Miles distant)</u>	<u>Enrollment (Fall, 1995)</u>
Georgetown College	Georgetown, Kentucky (18)	1,461
Lexington Community College	Lexington, Kentucky (19)	5,228
Transylvania University	Lexington, Kentucky (19)	923
University of Kentucky	Lexington, Kentucky (19)	24,378
Midway College	Midway, Kentucky (28)	926
Kentucky State University	Frankfort, Kentucky (36)	2,579
Asbury College	Wilmore, Kentucky (37)	1,206
Eastern Kentucky University	Richmond, Kentucky (38)	15,727
Maysville Community College	Maysville, Kentucky (48)	1,362
Berea College	Berea, Kentucky (52)	1,559
Centre College	Danville, Kentucky (54)	967
Morehead State University	Morehead, Kentucky (55)	8,454

## VOCATIONAL-TECHNICAL TRAINING

Kentucky Tech schools are operated by the Cabinet for Workforce Development and provide secondary (Sec) and postsecondary (P/S) vocational-technical training.

	Location (Mileage from (Paris))	Number of Program Offerings	Cumulative Enrollment 1995-1996		Approximate Number Completing Long-Term Programs Annually
<u>Kentucky Tech Schools</u>					
Harrison County Area Technology Center	Cynthiana (15)	8	<u>Sec</u> 567	<u>P/S</u> 7	100
Central Kentucky Regional Technology Center	Lexington (19)	26	<u>Sec</u> 0	<u>P/S</u> 909	350
<u>Other Vocational Schools</u>					
Fayette County Southside Center for Applied Technology	Lexington (19)	8	<u>Sec</u> 213	<u>P/S</u> 0	53
Fayette County Eastside Center for Applied Technology	Lexington (19)	7	<u>Sec</u> 312	<u>P/S</u> 0	106

### Customized Training

The Kentucky Tech system, through its Training and Development Coordinators, will provide technical assistance and will identify and develop low-cost customized training programs and services for both established and prospective businesses. Businesses wanting to establish a customized training program should contact a Training and Development Coordinator located at the Central Kentucky Regional Technology Center in Lexington.

### Assessment Services

Kentucky Tech Career Connections offers to business, education, and government agencies testing packages for evaluating job applicants, selecting employees for promotional consideration, and developing training programs within the organization. A Career Connections Assessment Center is located on the campus of the Central Kentucky Regional Technology Center in Lexington.

### Adult Education Services

Adult education programs are available to adults who want to develop new skills, improve basic skills, or earn a high school equivalency diploma. In Paris, adult basic education and adult literacy programs are administered through the Bourbon County Board of Education.

### Bluegrass State Skills Corporation

The Bluegrass State Skills Corporation, an independent public corporation created and funded by the Kentucky General Assembly, provides programs of skills training to meet the needs of business and industry from entry level to advanced training, and from upgrading present employees to retraining experienced workers.

The Bluegrass State Skills Corporation is a major source for skills training assistance for a new or existing company. The Corporation works in partnership with other employment and job training resources and programs, as well as Kentucky's economic development activities, to package a program customized to meet the specific needs of a company.



## OTHER LOCAL FACILITIES

### Local Medical Personnel

Physicians - 22  
Dentists - 11

### Hospitals

<u>General Hospital</u>	<u>Location</u>	<u>Beds</u>
Columbia Hospital Paris	Paris	58

Medical staff - 22 active physicians, 25 courtesy physicians, 35 registered nurses,  
15 licensed practical nurses

### Other Medical Facilities and Services

Bluegrass Medical Clinic  
Bourbon County Comprehensive Care Center  
Bourbon County Health Department  
Bourbon County Heights (nursing home)  
Nurses Home Health Registry  
Paris-Bourbon County Emergency Medical Service  
Stoner Creek Centre

### Banks and Savings & Loan Associations

Blue Grass Federal Savings and Loan Association  
Fifth Third Bank  
Kentucky Bank

### Newspapers

The Bourbon County Citizen (weekly)  
The Bourbon Times (weekly)  
The Citizen Advertiser (weekly)

### Telephone Service

BellSouth

## RECREATION

### Local

A number of public recreational facilities are available in Paris. Bourbon Park, a 30-acre county park, contains lighted softball/baseball fields, a track, a tennis court, fairground facilities, pavilion, basketball/volleyball courts (one court can be flooded during winter months for ice skating), exercise stations, picnic areas, and horseshoe pits. A new Children's Creative Playground is under construction at Bourbon Park.

Garrard Park, operated by the city, features nine tennis courts, a lighted softball/baseball field, and a picnic pavilion. The city plans to add a basketball court in the near future. There are three additional limited facility parks located throughout the county and two soccer fields. Paris also sponsors Little league and Babe Ruth league baseball programs.

Private recreational facilities include a country club, with a nine-hole golf course and swimming pool; a commercial nine-hole golf course; and a YMCA with an Olympic-size swimming pool and fitness center. Paris residents also benefit from a local bowling alley and drive-in theater. The Houston Oaks Golf Course, a new 18-hole championship course, recently opened.

The Hopewell Museum is a combined local history and fine arts museum. The fine arts collection features paintings, pottery, porcelain, glass, and work on paper. The museum features continually changing exhibits on the history of Paris and Bourbon County and offers classes and programs for children and adults.

### Area (Within 65 miles)

The Kentucky Horse Park  
Blue Licks Battlefield State Park  
Waveland State Historic Site  
Kentucky State Capital  
Daniel Boone National Forest  
Kincaid Lake State Park  
Shaker Village of Pleasant Hill  
Fort Boonesborough State Park  
White Hall State Historic Site  
Keeneland Race Course  
Red Mile Harness Track

## COMMUNITY DEVELOPMENT

Paris is an active member of the Kentucky Main Street Program. The Paris/Bourbon County Chamber of Commerce seeks to facilitate community-wide involvement to encourage an economic environment that will benefit and support existing businesses, attract new businesses, and effectively address the continuing needs of Bourbon County. It also seeks to promote Bourbon County as a quality place to live, work, and visit by enhancing our theme "Horses, History & Hospitality".

This organization provides seminars for local merchants to help them better market and advertise their product, offers a paint partnership to assist downtown merchants in facade improvement, actively recruits new businesses into the community, and plans to undertake a major streetscape project to revitalize the historic downtown district.