

1982

# Industrial Resources: Breathitt County - Jackson

Kentucky Library Research Collections  
Western Kentucky University, [spcol@wku.edu](mailto:spcol@wku.edu)

Follow this and additional works at: [https://digitalcommons.wku.edu/breathitt\\_cty](https://digitalcommons.wku.edu/breathitt_cty)

 Part of the [Business Administration, Management, and Operations Commons](#), [Growth and Development Commons](#), and the [Infrastructure Commons](#)

---

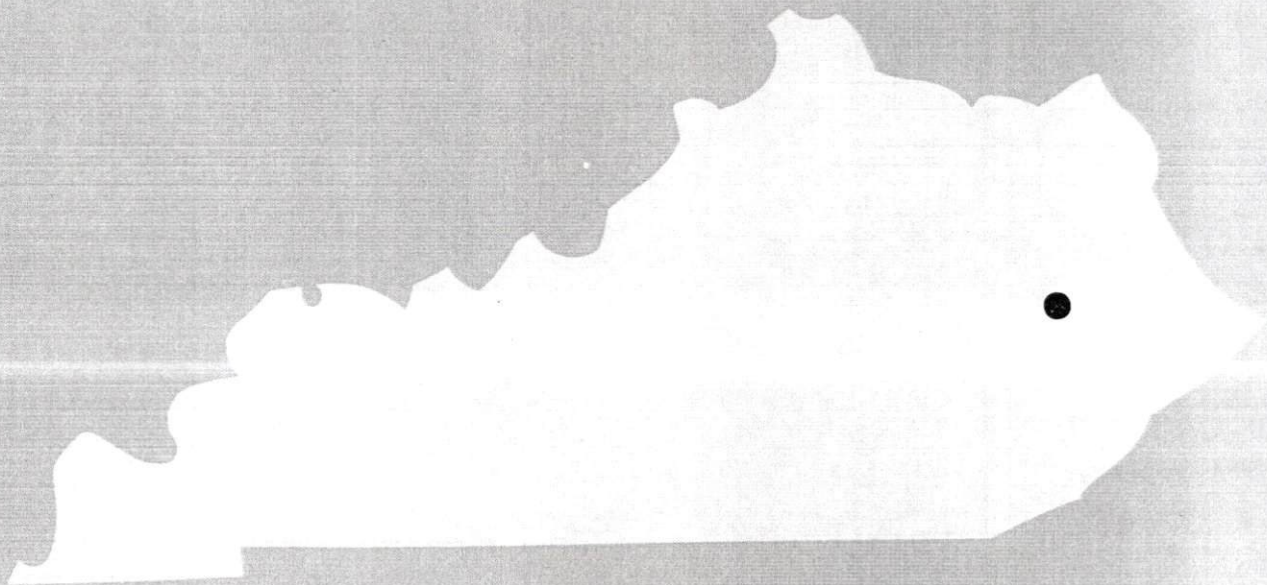
## Recommended Citation

Kentucky Library Research Collections, "Industrial Resources: Breathitt County - Jackson" (1982). *Breathitt County*. Paper 14.  
[https://digitalcommons.wku.edu/breathitt\\_cty/14](https://digitalcommons.wku.edu/breathitt_cty/14)

This Report is brought to you for free and open access by TopSCHOLAR®. It has been accepted for inclusion in Breathitt County by an authorized administrator of TopSCHOLAR®. For more information, please contact [topscholar@wku.edu](mailto:topscholar@wku.edu).

Breathitt County

A comprehensive  
report on  
**Jackson, Ky.**

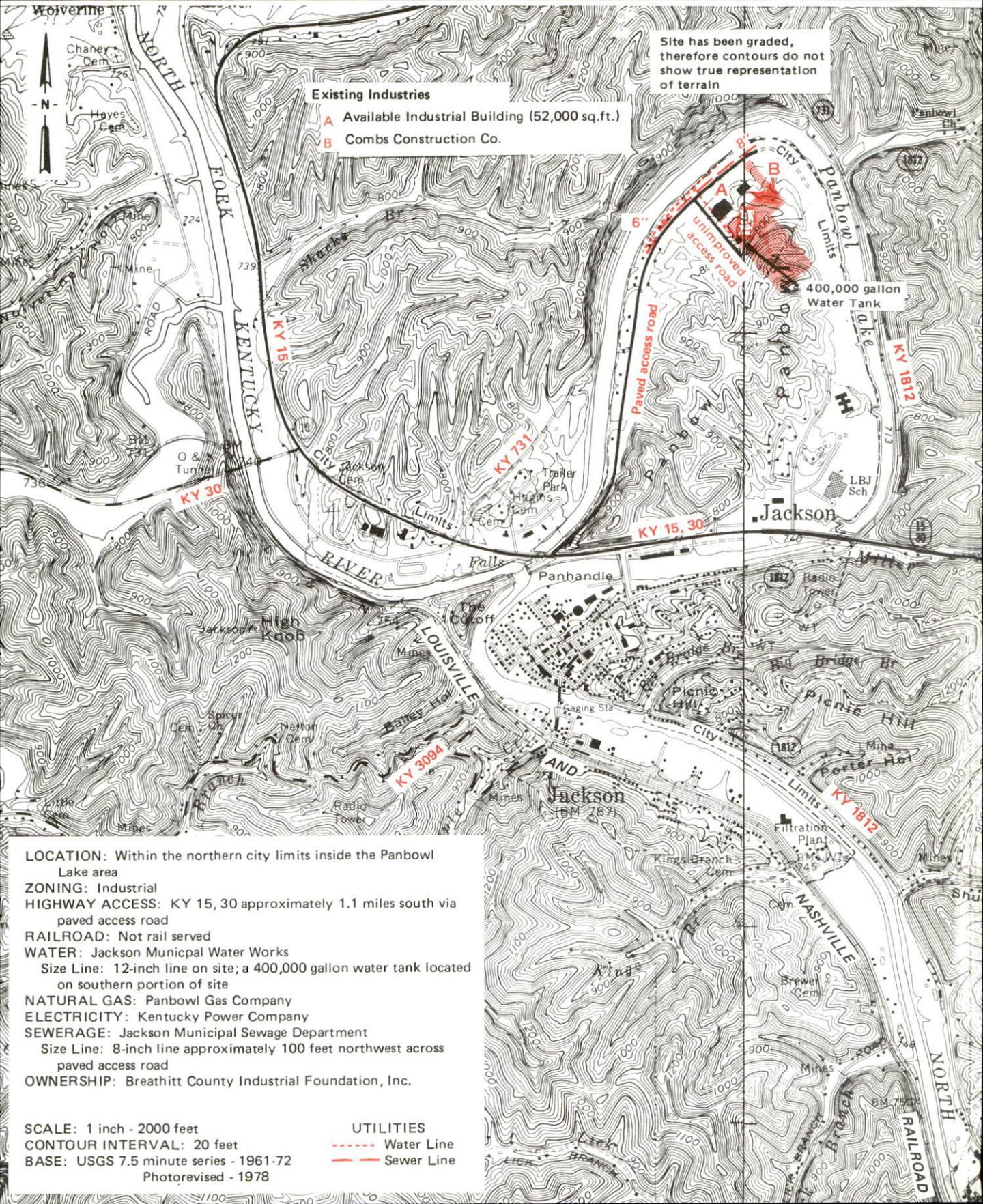


**KENTUCKY & CO.**  
The state that's run like a business.



# JACKSON, KENTUCKY --- Site 182 --- 22 Acres

For more information contact the Department of Economic Development, Office of Business Development, Industrial Development Division, Capital Plaza Tower, Frankfort, Kentucky 40601 (502-564-7140).



Site has been graded, therefore contours do not show true representation of terrain

### Existing Industries

- A Available Industrial Building (52,000 sq.ft.)
- B Combs Construction Co.

**LOCATION:** Within the northern city limits inside the Panbowl Lake area  
**ZONING:** Industrial  
**HIGHWAY ACCESS:** KY 15, 30 approximately 1.1 miles south via paved access road  
**RAILROAD:** Not rail served  
**WATER:** Jackson Municipal Water Works  
 Size Line: 12-inch line on site; a 400,000 gallon water tank located on southern portion of site  
**NATURAL GAS:** Panbowl Gas Company  
**ELECTRICITY:** Kentucky Power Company  
**SEWERAGE:** Jackson Municipal Sewage Department  
 Size Line: 8-inch line approximately 100 feet northwest across paved access road  
**OWNERSHIP:** Breathitt County Industrial Foundation, Inc.

**SCALE:** 1 inch - 2000 feet  
**CONTOUR INTERVAL:** 20 feet  
**BASE:** USGS 7.5 minute series - 1961-72  
 Photorevised - 1978

**UTILITIES**  
--- Water Line  
--- Sewer Line



A COMPREHENSIVE REPORT ON  
JACKSON, KENTUCKY

Prepared by  
The Kentucky Department of Economic Development  
Division of Research and Planning  
in cooperation with  
The Breathitt County Industrial Foundation

1982



Program manager - Brenda Roberts; research - John McMurray; clerical - Lisa Richards; graphics - Frank Ferrante, Tony Cecconi, Jimmy Thompson; cartography - Site Evaluation Section, Industrial Development Division. Cost of printing paid from state funds.



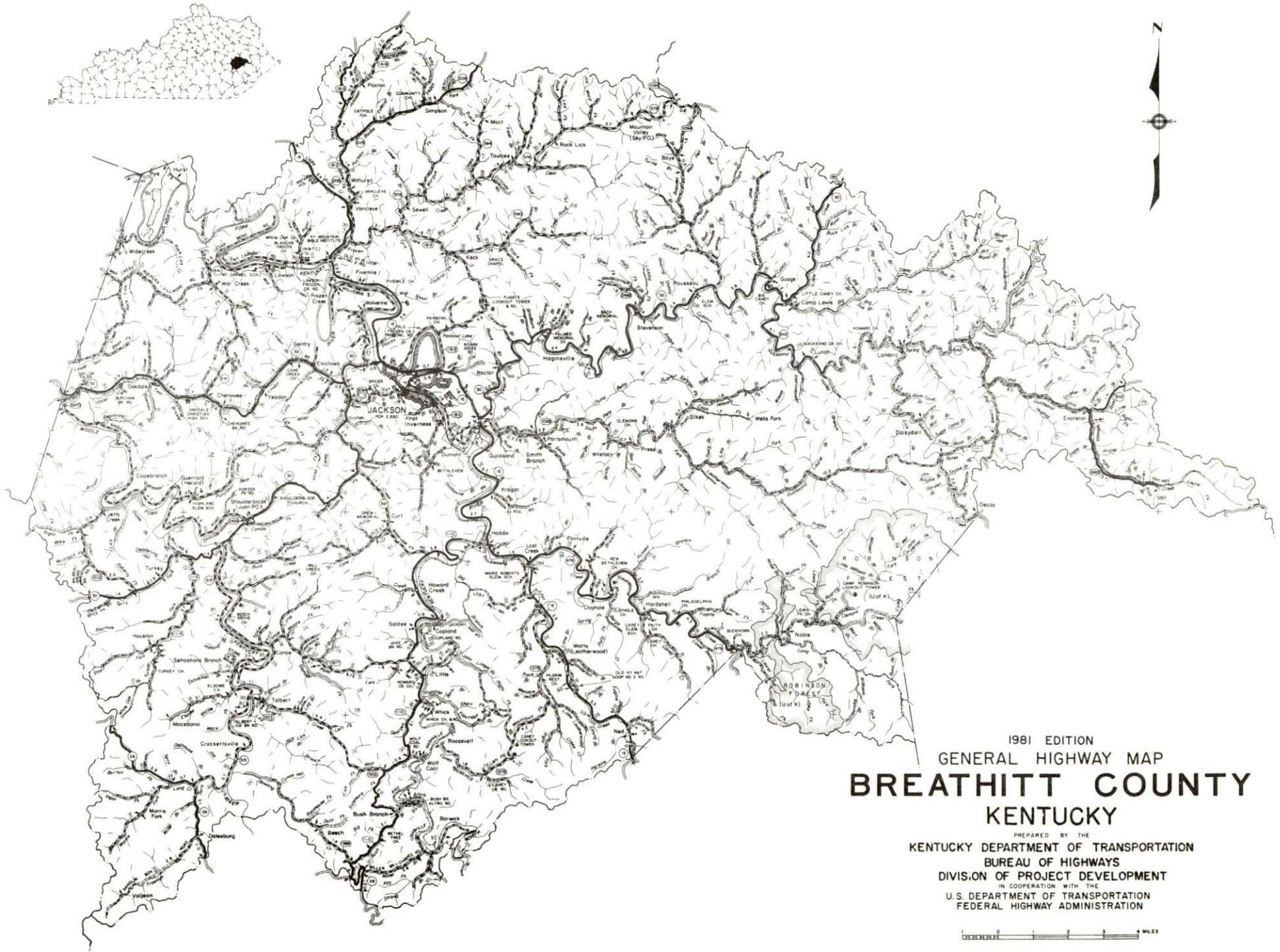
## TABLE OF CONTENTS

<u>Chapter</u>	<u>Page</u>
INDUSTRIAL SITES . . . . .	i
JACKSON, KENTUCKY - A RESOURCE PROFILE . . . . .	1
THE LABOR MARKET AREA . . . . .	3
Population . . . . .	3
Labor Force Characteristics of Residents, 1980 . . . . .	3
Estimated Male Labor Supply . . . . .	4
Estimated Female Labor Supply . . . . .	4
Jackson Manufacturing Firms, Their Products and Employment . . . . .	5
Labor Organizations in Manufacturing Firms . . . . .	5
Industrial Services . . . . .	5
Average Weekly Wages by Industry, by Place of Work, 1980 . . . . .	6
Per Capita Personal Income . . . . .	8
TRANSPORTATION . . . . .	9
Rail . . . . .	9
Highways . . . . .	9
Truck Service . . . . .	10
Air . . . . .	12
Bus . . . . .	12
Taxi . . . . .	12
Rental Services . . . . .	12
Water . . . . .	12
POWER AND FUEL . . . . .	13
Electricity . . . . .	13
Natural Gas . . . . .	14
Other Fuels . . . . .	14
WATER AND SEWERAGE . . . . .	15
Public Water Supply . . . . .	15
Raw Water . . . . .	16
Sewerage . . . . .	17
CLIMATE . . . . .	18



<u>Chapter</u>	<u>Page</u>
LOCAL GOVERNMENT . . . . .	19
City . . . . .	19
County . . . . .	19
Assessed Value of Property . . . . .	19
Property Taxes . . . . .	19
Combined State and Local Rates Per \$100 Valuation, 1981 . . . . .	20
Utilities Gross Receipts Tax for Schools . . . . .	20
Planning and Zoning . . . . .	20
Safety . . . . .	21
Police . . . . .	21
Fire . . . . .	21
Rescue Service . . . . .	21
Refuse Collection and Disposal . . . . .	21
EDUCATION . . . . .	22
Public Schools . . . . .	22
Area Colleges and Universities . . . . .	23
Vocational Schools . . . . .	24
HEALTH . . . . .	26
Local Medical Personnel . . . . .	26
Hospitals . . . . .	26
Ambulance Service . . . . .	26
Public Health . . . . .	26
OTHER LOCAL FACILITIES . . . . .	27
Communications . . . . .	27
Library Services . . . . .	27
Religious Institutions . . . . .	28
Financial Institutions . . . . .	28
Hotels and Motels . . . . .	28
Clubs and Organizations . . . . .	29
RECREATION . . . . .	30



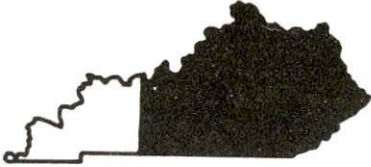


1981 EDITION  
 GENERAL HIGHWAY MAP  
**BREATHITT COUNTY**  
 KENTUCKY

PREPARED BY THE  
 KENTUCKY DEPARTMENT OF TRANSPORTATION  
 BUREAU OF HIGHWAYS  
 DIVISION OF PROJECT DEVELOPMENT  
 IN COOPERATION WITH THE  
 U.S. DEPARTMENT OF TRANSPORTATION  
 FEDERAL HIGHWAY ADMINISTRATION

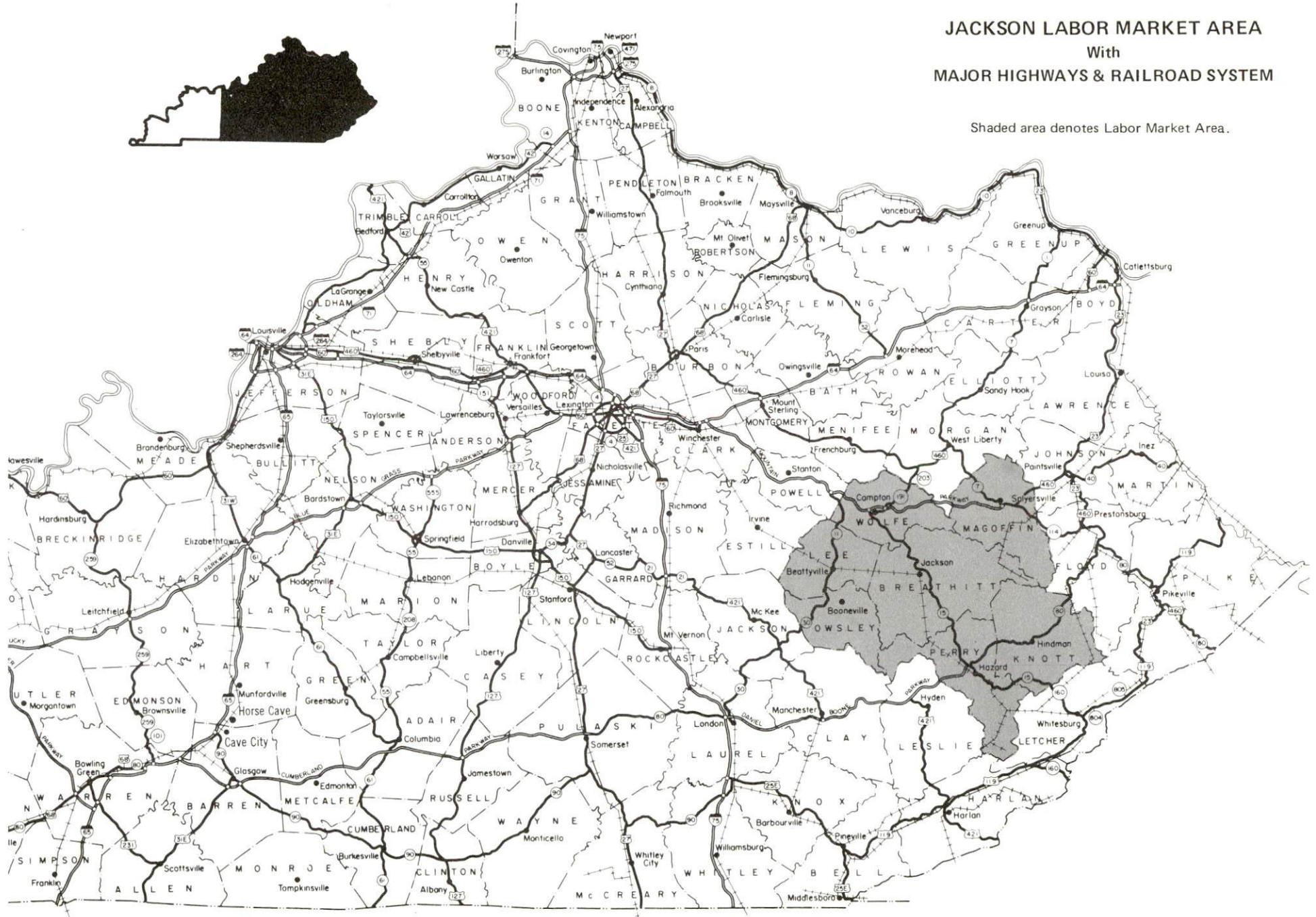






# JACKSON LABOR MARKET AREA With MAJOR HIGHWAYS & RAILROAD SYSTEM

Shaded area denotes Labor Market Area.





## JACKSON, KENTUCKY - A RESOURCE PROFILE

Jackson, the county seat of Breathitt County which was established in 1839, is located in eastern Kentucky, 157 miles southeast of Louisville, Kentucky; 85 miles southeast of Lexington, Kentucky; 183 miles northeast of Knoxville, Tennessee; and 174 miles southeast of Charleston, West Virginia. Jackson had a 1980 population of 2,651.

Breathitt County lies in the Eastern Coal Field Region of Kentucky and covers a land area of 494 square miles. In 1980, Breathitt County had a population of 17,004, an increase of 20 percent above the 1970 population.

### The Economic Framework

Total employment in Breathitt County in 1980 averaged 6,447 with 6,286 employed in nonagricultural jobs. Manufacturing provided 232 jobs, wholesale and retail trade provided 548 jobs, service occupations provided 417 jobs and government provided 656 jobs. Manufacturing employment is greatest in the electrical machinery field and the apparel and related products field.

Per capita income in Breathitt County in 1979 was \$4,107. Between 1975 and 1979, per capita income increased by 49.3 percent.

The Jackson Labor Market Area includes Breathitt County and its six surrounding counties. Area employment in 1980 averaged 30,484 with 29,636 employed in nonagricultural jobs. Manufacturing provided 719 jobs, wholesale and retail trade provided 3,200 jobs, service occupations provided 2,522 jobs and government provided 3,905 jobs.

### Resources For Growth

1. Labor supply - There is a current estimated labor supply of 8,396 men and 7,702 women available for industrial jobs in the labor market area. In addition 4,430 young men and 4,238 young women will become 18 years of age before 1986 and potentially available for work.

2. Transportation - The Louisville and Nashville Railroad provides Jackson with main line rail service. Highway routes leading into Jackson and Breathitt County are Kentucky Highways 15, 30 and 52 (all three highways are rated as class AAA, 80,000 lb. gross load limit). Jackson is 21 miles south of the Mountain Parkway which links with Interstate 64. Access to the Daniel Boone Parkway, which connects with Interstate 75 at London, Kentucky, can be reached 28 miles to the south. Two common carrier truck companies provide Jackson with interstate and intrastate service. The Jackson-Breathitt County Airport has one 4,400 foot paved runway and 100LL and jet fuel is available. Regularly scheduled air service is provided at Bluegrass Field in Lexington, 85 miles northwest of Jackson.

## Resources for Growth

3. Power - The Kentucky Power Company furnishes electricity to Jackson and the eastern and southern parts of Breathitt County. The Licking Valley Rural Electric Cooperative Corporation furnishes electricity to the northern and western parts of Breathitt County and its source of power is the East Kentucky Power Cooperative. Natural gas service to Jackson is provided by the Public Gas Company, whose source of supply is Panbowl Production (local gas field). There are three distributors of liquefied petroleum gas and six distributors of distillate fuel oil serving the Jackson area. Low sulphur content coal is available locally.

4. Education - Breathitt County has two public school systems, the Jackson Independent School District and the Breathitt County School System.

Lees Junior College, established in 1883 and Presbyterian affiliated, is located in Jackson. The college offers an associate degree and the 1981 enrollment was 347. In addition, six institutions of higher learning are located within 85 miles of Jackson.

The Breathitt County Area Vocational Education Center, located in Jackson, offers eight areas of training. The nearest state vocational-technical school is located at Hazard, 31 miles away, and offers training in 18 areas.



## THE LABOR MARKET AREA

The Jackson Labor Market Area includes Breathitt County and the adjoining Kentucky counties of Knott, Lee, Magoffin, Owsley, Perry and Wolfe

POPULATION			
Area	1980	1970	Percent Nonwhite
Jackson	2,651	1,887	1.2
Labor Market Area	102,383	82,900	N/A
Breathitt County	17,004	14,221	0.5
Knott County	17,940	14,698	0.8
Lee County	7,754	6,587	0.5
Magoffin County	13,515	10,443	0.2
Owsley County	5,709	5,023	0.2
Perry County	33,763	26,259	2.1
Wolfe County	6,698	5,669	0.2

Note: The 1980 counts of population by race are provisional.

Sources: U.S. Department of Commerce, Bureau of the Census, 1980 Census of Population and Housing, March 1981. Population Research Unit, Urban Studies Center, University of Louisville, Kentucky Demographics: The 1980 Census of Kentucky, Characteristics of Population, Households, January 1982.

### LABOR FORCE CHARACTERISTICS OF RESIDENTS, 1980

	Breathitt County	Labor Market Area
Civilian Labor Force	7,080	34,407
Employment	6,447	30,484
Agricultural	161	848
Nonagricultural	6,286	29,636
Unemployment	633	3,923
Rate of Unemployment (%)	8.9	11.4

Source: Kentucky Department for Human Resources, Kentucky Labor Force Estimates, Annual Averages, 1980.





JACKSON MANUFACTURING FIRMS,  
THEIR PRODUCTS AND EMPLOYMENT

Firm (Establishment date)	Product	Employment			Labor Unions
		Total	Male	Female	
Breathitt County Ready Mix Concrete (1965)	Ready mixed concrete	8	8	-	
Hinkle Contracting Company (1974)	Ready mixed concrete, asphalt	8	8	-	
Inter-Mountain Publishing Company (1965)	Newspaper, job printing	12	2	10	
Prestolite Wire Division, Eltra Corporation (1975)	Battery cables	52	16	36	
Royal Crown Bottling Company (1949)	Soft drinks	23	22	1	

Source: Kentucky Department of Economic Development, 1982 Kentucky Directory of Manufacturers.

LABOR ORGANIZATIONS IN MANUFACTURING FIRMS

Presently, no labor unions represent manufacturing workers in Jackson.

INDUSTRIAL SERVICES

<u>Types of Services</u>	<u>Location</u>	<u>Miles distant</u>
Tool & Die, Machine & Pattern Shops	Paintsville	59
	Manchester	67
Metal Service Centers	Lexington	85
Heat Treating	Richmond	73
Metal Finishers	Richmond	73
Electric Motor Repair	Whitesburg	63

Source: Kentucky Directory of Selected Industrial Services, 1981.

AVERAGE WEEKLY WAGES BY INDUSTRY,  
BY PLACE OF WORK, 1980

	Breathitt County	Knott County	Lee County	Magoffin County
All Industries	\$359.44	\$266.20	\$211.52	\$281.90
Mining & Quarrying	*	353.70	320.98	473.95
Contract Construction	256.23	266.14	167.62	156.61
Manufacturing	219.28	163.54	166.19	*
Transportation, Communications & Public Utilities	297.18	258.89	294.80	238.16
Wholesale & Retail Trade	175.66	169.85	174.10	130.49
Finance, Insurance & Real Estate	275.02	336.16	*	327.79
Services	147.95	180.51	152.26	151.83
State/Local Government	236.95	206.65	191.97	200.80
Other	*	*	*	0

	Owsley County	Perry County	Wolfe County
All Industries	\$199.06	\$302.17	\$171.37
Mining & Quarrying	317.40	462.07	213.48
Contract Construction	186.83	274.36	*
Manufacturing	0	312.02	*
Transportation, Communications & Public Utilities	*	306.43	193.34
Wholesale & Retail Trade	132.80	185.90	147.84
Finance, Insurance & Real Estate	*	320.93	190.39
Services	153.85	218.51	111.59
State/Local Government	202.63	218.80	164.57
Other	0	*	0

\*Not disclosed.

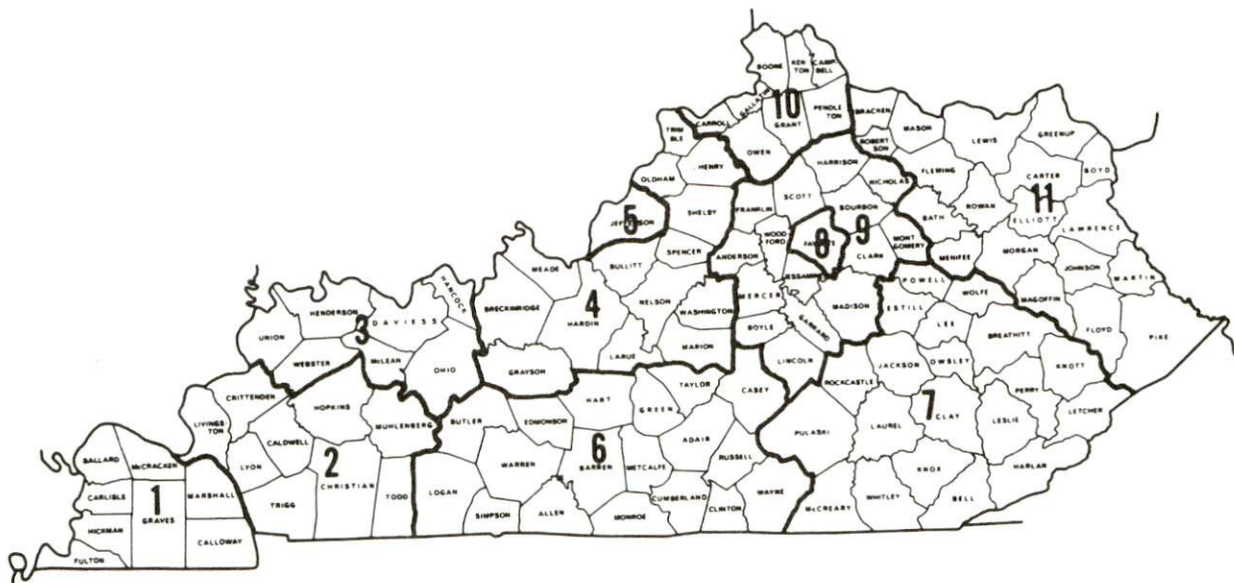
Note: Excludes domestic workers, railway workers, certain nonprofit corporations, majority of federal government workers, and self-employed workers.

Source: Kentucky Department for Human Resources, Average Weekly Wages of Workers Covered by Kentucky Unemployment Insurance Law, 1980.



Occupational wage rates for specific industries are usually not available to most government agencies, and wage data furnished to state employment agencies by individual industrial employers is protected from disclosure by federal law. The most reliable up-to-date wage information can be obtained by direct contact with local employers.

Associated Industries of Kentucky, a voluntary organization of Kentucky businesses, regularly collects occupational wage rates and fringe benefits data from participating member firms. Data is compiled for over 127 clearly defined office, production, and service occupations. Tabulations are published for eleven regions of Kentucky, as shown on the map below. It should be noted that the data may be weighted by the preponderance of firms in the larger cities and may be somewhat higher than the rates paid in the smaller communities. Data from these tabulations are available, upon request, from the Kentucky Department of Economic Development, Frankfort, Kentucky 40601.



Associated Industries of Kentucky Area Wage Surveys

PER CAPITA PERSONAL INCOME

<u>Area</u>	<u>1979</u>	<u>1975</u>	<u>Percent Change</u>
Breathitt County	\$4,107	\$2,751	49.3
Labor Market Area			
Range	\$3,411 - 7,039	\$2,485 - 4,502	N/A
Kentucky	7,052	4,882	44.4
U.S.	8,637	5,861	47.4

Source: U.S. Department of Commerce, Bureau of Economic Analysis, April 1981. U.S. Department of Commerce, Bureau of Economic Analysis, August 1981.



## TRANSPORTATION

### Rail

Line serving Jackson - Louisville and Nashville Railroad Company

Services - Main line; 1 northbound and 1 southbound freight stops daily, northbound and southbound through freights, consisting of manifest and unit trains, will vary daily; switching facilities; team track space for 28 cars. Nearest piggyback facilities are located at Frankfort, Kentucky, 108 miles northwest of Jackson\*.

For details on routing, schedules, rates, and services, contact:

Director of Industrial Development  
Louisville and Nashville Railroad Company  
P.O. Box 32290  
Louisville, Kentucky 40232  
(502) 587-5723

### Highways

Kentucky highways 15, 30 and 52, all AAA rated, 80,000 pound gross load limit highways, serve Jackson. Access to the Mountain Parkway, a multilane toll road, is located 21 miles northwest of Jackson at Campton via Kentucky Highway 15. An interchange of the Daniel Boone Parkway, also a multilane toll road, is located 28 miles south of Jackson via Kentucky Highway 15.

\*L & N Provides piggyback service from Frankfort through the Louisville ramp with highway service substituted for rail between the two cities. Rates are charged from Frankfort.

Truck Service

Company

Hazard Express, Inc.\*

Overnite Transportation  
Company \*

Home Office

P.O. Box 746  
Hazard, Kentucky 41701

P.O. Box 1216  
Richmond, Virginia 23209

Other Freight Services

Purolator Courier Corporation\*\*  
United Parcel Service\*\*\*

Nearest Shipping Center

Lexington, 85 miles northwest  
Clay City, 47 miles northwest  
Cornettsville, 46 miles southeast

---

\*Interstate and intrastate service.

\*\*For regular scheduled pickups or for occasional pickups, arrangements must be made with the Lexington, Kentucky, office of Purolator Courier Corporation.

\*\*\*For regular scheduled pickups or for occasional pickups, arrangements must be made with the Louisville office of United Parcel Service.



HIGHWAY MILES AND TRUCK TRANSIT TIME IN DAYS FROM  
JACKSON, KENTUCKY, TO SELECTED MARKET CENTERS

City	Highway Miles	Delivery Time*		City	Highway Miles	Delivery Time	
		TL				TL	
Atlanta, Ga.	376	1		Los Angeles, Ca.	2,265	6-8	
Baltimore, Md.	561	1-2		Louisville, Ky.	157	1	
Birmingham, Ala.	437	1		Nashville, Tenn.	284	1	
Chicago, Ill.	437	1-2		New Orleans, La.	779	2	
Cincinnati, Ohio	163	1		New York, N. Y.	733	2-3	
Cleveland, Ohio	402	1		Pittsburgh, Pa.	393	1	
Detroit, Mich.	422	2-3		St. Louis, Mo.	420	1	
Knoxville, Tenn.	183	1					

\*Delivery time does not include day of pickup.

Note: Mileage computations are via the best interstate or primary highways, not necessarily the most direct route of travel.

Sources: Rand McNally Road Atlas, 1979. Official Kentucky Mileage Map, 1979. Delivery time only - Overnite Transportation Company, 1100 Commerce Road, Richmond, Virginia 23209.

## Air

### Local

The Jackson-Breathitt County Airport\*  
Location: Jackson  
Runways: 1 paved  
Length: 4,400 feet  
Traffic  
Control: Wind sock  
Lighting: REIL, rotating beacon  
Services: Fuel (100 LL, Jet A)

### Nearest Scheduled Airline Service

Blue Grass Field  
Location: 4 miles west of Lexington, Kentucky; 89 miles  
northwest of Jackson  
Runways: 2 paved  
Length: 6,500 feet; 3,500 feet  
Traffic  
Control: Tower  
Lighting: Approach lighting system, beacon, runways and  
obstructions lighted, VASI  
Services: USAir, Delta, Piedmont, Frontier, Comair, Tennessee  
Airways; fuel - 80, 100LL, Jet-A; hangers, tie-downs;  
major A & P repairs, major Avionics repairs; APU,  
charter, flight instruction, oxygen, plane rentals,  
survival equipment; taxi, limousine, car rentals,  
courtesy car; weather information; restaurant,  
snack bar  
Air Freight  
Service: Air freight terminal

Bus - Southern Greyhound Bus Lines

Taxi - Two taxi companies serve Jackson and Breathitt County.  
(daytime hours 7 a.m. to 8:30 p.m.)

Rental Services - Auto, truck and trailer rentals are available at  
Hazard, 31 miles distant.

### Water

Access to the inland waterways is available via the Big Sandy River, 92 miles northeast of Jackson at Louisa. A 6-foot navigation channel is maintained on the Big Sandy River for a distance of approximately 10 miles, then it becomes a 9-foot channel and continues to its confluence with the Ohio River, where a 9-foot navigation channel is maintained throughout its entirety.



POWER AND FUEL

Electricity

Company serving Jackson and the eastern and southern part of Breathitt  
County - Kentucky Power Company

Source of power - Kentucky Power Company

Total generating capacity - 1,065,000 KW

For industrial rates contact:

Kentucky Power Company  
1701 Central Avenue  
P.O. Box 1428  
Ashland, Kentucky 41101  
(606) 329-2220

Company serving the northern and western part of Breathitt County -  
Licking Valley Rural Electric Cooperative Corporation

Source of power - East Kentucky Power Cooperative

Total generating capacity - 1,304,000 KW

For industrial rates contact:

Industrial Development Division  
East Kentucky Power Cooperative  
P.O. Box 707  
Winchester, Kentucky 40391  
(606) 744-4812

and/or

Licking Valley RECC  
Main Street  
West Liberty, Kentucky 41472  
(606) 743-3179

Natural Gas

Company serving Jackson - Public Gas Company  
Source of supply - Panbowl Production (local gas field)  
Size of transmission mains - 2 inch (supplier); 3 inch (distributor)  
Distribution mains - 4, 3 and 2 inches  
Distribution pressure - 7 ounces  
Btu content - 1,170 per cubic foot; Specific gravity - .60  
For rates and supplies contact:

Public Gas Company  
P.O. Box 619  
Jackson, Kentucky 41339  
(606) 666-2205

Other Fuels

Propane (Within 30 miles)

Darch Bottled Gas, Inc.  
Main Street  
Beattyville, Kentucky 41311

Ideal Bottled Gas, Inc.  
Main Street  
Beattyville, Kentucky 41311

Empire Gas, Inc., of Jackson  
329 Broadway  
Jackson, Kentucky 41339

Fuel oils

Distillate fuel oil - (within 30 miles)

Ashland Petroleum Company  
Quicksand Road  
Jackson, Kentucky 41339

Ideal Gas and Oil Company  
Armory Drive  
Jackson, Kentucky 41339

Breathitt County Oil Company  
Highway 15  
Jackson, Kentucky 41339

Rogers Oil Company  
Highway 11  
Beattyville, Kentucky 41311

Chevron Oil Company  
Armory Drive  
Jackson, Kentucky 41339

Tank Service, Inc.  
Irvine Road  
Beattyville, Kentucky 41311

Residual fuel oil - Arrangements must be made with the refinery.

Low sulphur content coal - Available locally.



## WATER AND SEWERAGE

### Public Water Supply

Company serving Jackson - Jackson Municipal Waterworks\*  
333 Broadway  
Jackson, Kentucky 41339  
(606) 666-2056 or 666-5272

Source - North Fork of the Kentucky River  
Treatment plant capacity - 1,800,000 gallons per day  
Average daily consumption - 720,000 gallons  
Peak daily consumption - 900,000 gallons  
Type treatment - Activated charcoal, chlorination, filtration,  
fluoridation  
Storage capacity - 1,160,000 gallons  
Size lines - 1 inch through 12 inches  
Average pressure - 120 psi  
Average temperature - 50 degrees F.

\*The Jackson Municipal Waterworks has completed a \$2 million improvement to its water treatment plant and water distribution system. The treatment plant capacity was increased to 1,800,000 gallons per day and a 400,000 gallon treated water storage tank was erected. Future plans call for the extension of an 8-inch water main, approximately five miles along Kentucky highways 15, 30 and 52. The extended water main will provide service to 22 new customers including two large users.

## MONTHLY WATER RATES

### Rates for original Jackson area

First	2,000 gallons	\$5.00 (Minimum)
Next	3,000 gallons	1.50 per M gallons
Next	5,000 gallons	1.40 per M gallons
Next	5,000 gallons	1.30 per M gallons
Next	5,000 gallons	1.20 per M gallons
Next	10,000 gallons	1.10 per M gallons
Next	20,000 gallons	1.00 per M gallons
Over	50,000 gallons	.90 Per M gallons

### Rates for former Quicksand Water District

First	2,000 gallons	\$5.50 (Minimum)
Next	4,000 gallons	1.25 per M gallons
Next	6,000 gallons	1.00 per M gallons
Next	8,000 gallons	.90 per M gallons
Over	20,000 gallons	.80 per M gallons

Tap-on:	Residential - \$250.00	
	Commercial - 3/4-inch meter	\$ 300
	3/4-inch meter up to	
	2-inch meter	500
	2-inch meter and over	1,000

### Raw Water

Surface water sources - North and Middle Forks of Kentucky River  
Average discharge - North Fork Kentucky River at Jackson, 1,372 cfs  
(45 years, USGS, unadjusted) Middle Fork Kentucky River at Tallega,  
738 cfs (42 years, USGS, unadjusted)  
Expected ground water yield - 5 to 50 gpm over entire county except  
for eastern tips which are 50 to 200 gpm

Sewerage

Company serving Jackson - Jackson Municipal Sewerage System\*  
333 Broadway  
Jackson, Kentucky 41339  
(606) 666-2056 or 666-5197

Design capacity - 350,000 gallons per day

Average daily flow - At capacity

Treatment - Primary and secondary

Type treatment - Aeration, digester, drying beds

Treated effluent discharged into - North Fork of the Kentucky River

Size of sanitary mains - 12, 10, 8 and 6 inches

Size of storm mains - 18 inches through 48 inches

Rates - Jackson area - 60 percent of monthly water bill

Quicksand area - 100 percent of monthly water bill

Tap-on charge:	Residential-	\$ 150
	Commercial - 3/4-inch meter	200
	Over 3/4-inch meter up	
	to 2-inch meter	300
	2-inch	1,000

\*Preliminary plans for expanding the sewerage treatment plant have been made. Funding for the project is currently unavailable.



## CLIMATE

### Breathitt County

#### Temperature

Normal (30-year record)	55.2 degrees
Average annual 1980	54.3 degrees
Record highest, September, 1954 (36-year record)	103.0 degrees
Record lowest, January, 1963 (36-year record)	-21.0 degrees
Normal heating degree days (30-year record)	4,729
(Heating degree day totals are the sums of negative departures of average daily temperatures from 65 degrees F.)	

#### Precipitation

Normal (30-year record)	44.49 inches
Mean annual snowfall (36-year record)	17.00 inches
Total precipitation 1980	34.69 inches
Mean number days precipitation (.01 inch or more) (36-year record)	131
Mean number days thunderstorms (36-year record)	47

#### Prevailing Winds (17-year record)

South

#### Relative Humidity

1 a.m.	77 percent (16-year record)
7 a.m.	81 percent (17-year record)
1 p.m.	60 percent (17-year record)
7 p.m.	64 percent (17-year record)

Source: U.S. Department of Commerce, Environmental Science Services Administration, Climatological Data, 1980.  
Station of record: Lexington, Kentucky

## LOCAL GOVERNMENT

### City

Structure - Mayor - 4-year term; 6 council members - 2-year terms  
Budget 1982 - General Fund \$335,000.00  
                  Water and Sewer Fund \$300,733.35  
Fees and licenses - Occupational licenses range from \$10 to \$350  
annually; auto sticker - \$10 annually

### County

Structure - County Judge/Executive - 4-year term;  
4 magistrates - 4-year terms  
Budget 1981-82 - General Fund \$350,000; Road Fund \$376,000

### Assessed Value of Property, 1981

<u>Classes of Property</u>	<u>Jackson</u>	<u>Breathitt County</u>
Real Estate	\$9,851,172.98	\$86,359,606
Tangibles	8,318,666.06	92,982,175

### Property Taxes

All property in Kentucky is assessed at 100 percent of fair cash value.

Land and buildings are taxed by the state and may be taxed by local jurisdictions. The state rate is \$0.229 per \$100 of assessed valuation.

Manufacturing machinery, raw materials inventories, pollution control equipment, and goods in the process of manufacture are not subject to local taxation. The state rate is \$0.15 per \$100.

Other tangible personal property owned by manufacturers (automobiles, trucks, finished goods, office furniture, office equipment) is taxed by the state at \$0.45 per \$100 and may be taxed by local jurisdictions.

Property stored in public warehouses in a transit status is not subject to local taxation. The state rate is only \$0.015 per \$100.

Intangible personal property located in Kentucky (money in hand, shares of stock, notes, bonds, accounts receivable, and other credits) is taxed by the state at \$0.25 per \$100, and is not subject to local taxation.

Private leaseholds in industrial facilities owned by cities or counties and financed by industrial revenue bonds are subject to a state tax of \$0.015 per \$100 of value (essentially the lessee's equity, adjusted for appreciation or depreciation). Local taxation is not permitted.

Combined State and Local Rates per \$100 Valuation, 1981\*  
 (100% assessment)

	<u>Inside City of Jackson</u>	<u>Outside City</u>
1. Land and buildings	\$0.994	\$0.807
2. Mfg. machinery, raw materials, goods in process, pollution control equipment	0.150	0.150
3. Finished goods, office equipment, vehicles, other tangibles	1.215	1.028
4. Intangibles (accounts receivable, notes, bonds, etc.)	0.250	0.250
5. Leaseholds in industrial revenue bond financed plants	0.015	0.015

Utilities Gross Receipts Tax for Schools

A 3 percent tax is levied on utilities receipts for schools in the Jackson Independent School System. Tax is paid by all consumers of utilities as an add-on to the utilities bills. Exempted are receipts from utilities services that are resold and the receipts from the sale of energy or energy producing fuels that exceed 3 percent of the cost of production in manufacturing, processing, mining or refining.

Planning and Zoning

City agency - City of Jackson Zoning Commission  
 Zoning enforced - City only  
 Subdivision regulations enforced - City only  
 Local codes enforced - Building and Housing  
 Mandatory state codes enforced - Kentucky Plumbing Code, National Electric Code, Kentucky Boiler Regulations and Standards, Kentucky Building Code (modeled after BOCA code and applying to buildings with an occupancy of 100 or more persons)

\*Kentucky Department of Economic Development.



Safety

<u>Police</u>	<u>Jackson</u>	<u>Breathitt County</u>
Total staff	8	6 active 12 auxillary
Radio-patrol cars	2	3

Fire

American Insurance Association Fire Rating	8	10
Volunteers	20	--

Rescue Service

Breathitt County Rescue Squad:

Number of volunteers - 15

Equipment - One truck with basic equipment on board, boats and motors available from volunteers.

Personnel training - Basic first aid and cardiopulmonary resuscitation

Refuse Collection and Disposal

	<u>Jackson</u>
Type service	Municipal
Fee charged:	
residential	\$3 per month
business	\$6 per month
industrial	By volume
Collection frequency:	
residential	Twice weekly
business	Daily
industrial	Daily
Trash pickup	Twice weekly
Disposal method	Landfill

## EDUCATION

### Public Schools

	<u>Jackson Independent</u>	<u>Breathitt County*</u>
Total Enrollment (Winter 1981)	399	3,290
Elementary	246	1,752
Middle School	-	555
High School	153	983
Student-Teacher Ratio	16-1	20-1
Elementary	15-1	19-1
Middle School	-	19-1
High School	17-1	23-1
Percent High School Graduates to College (1980)	61.9	46.2
Expenditures Per Pupil (1980-81)	\$1,325.11	\$1,204.44
Bonded Indebtedness (June 30, 1980)	\$232,000	\$4,781,000

\*The Breathitt County School System has an extensive construction and remodeling project under way. A 900-student high school building is being constructed and is scheduled for completion in August 1982. All elementary school buildings are being inspected to conform to the Kentucky State Fire Code. Reroofing an elementary school building, installing boilers in two elementary school buildings and adding six new class rooms will complete the \$5.5 million project.

Area Colleges and Universities

<u>Name</u>	<u>Location (Miles distant)</u>	<u>Enrollment (Fall, 1981.)</u>	<u>Highest Degree Conferred</u>
Lees Junior College Hazard Community College	Jackson	347	Associate
Alice Lloyd College	Hazard (31)	341	Associate
Prestonburg Community College	Pippa Passes (54)	418	Baccalaureate
Eastern Kentucky University	Prestonburg (63)	824	Associate
	Richmond (73)	13,394	Masters, Specialist/ Doctorate*
Morehead State University	Morehead (80)	6,739	Masters, Specialist/ Doctorate**
Berea College	Berea (85)	1,587	Baccalaureate

\*Joint doctoral degree programs are offered in cooperation with the University of Kentucky, Lexington, and cooperative doctoral degree programs are offered with Michigan State University and the University of Maryland.

\*\*Joint doctoral degree programs are offered in cooperation with the University of Kentucky, Lexington.



## Vocational Schools

Both the state vocational-technical schools and the area vocational education centers are operated by the Kentucky Department of Education. The state vocational-technical schools enroll persons full time who are at least 16 years of age and not in school. These students attend classes for six hours each day. The area vocational education centers are designed to accommodate high school students who are at least 15 years of age. These students attend vocational school for three hours each day. The state vocational-technical schools and the area education centers offer evening courses to enable working adults to upgrade current job skills.

### Nearest State School

Location	Hazard State Vocational-Technical School
Miles Distant	Hazard
Curriculum	31
	Business and Office
	Clerical
	Stenographic-Secretarial
	Health and Personal Services Occupations
	Cosmetology
	Licensed Practical Nursing
	Industrial Education
	Air Conditioning, Heating and Refrigeration
	Auto Body Repair
	Auto Mechanics
	Carpentry-Building Trades
	Drafting
	Heavy Equipment Maintenance and Repair (Diesel Mechanics)
	Heavy Equipment Operating Engineer
	Highway Technology
	Industrial Electricity
	Industrial Electronics
	Machine Shop
	Masonry
	Mine Maintenance Mechanic
	Welding
	Learning Resource Center

Nearest Area Education Center

Location	Breathitt County Area Vocational Education Center
Curriculum	Jackson Business and Office Clerical Secretarial Industrial Education Appliance Repair Auto Body Repair Diesel Mechanics Industrial Electricity Machine Shop Mining Careers

Arrangements can be made to provide training in the specific production skills required by an industrial plant. Instruction may be conducted either in the vocational school or in the industrial plant, depending upon the desired arrangement and the availability of special equipment.

## HEALTH

### Local Medical Personnel

Physicians - 4  
Dentists - 3

### Hospitals

<u>General Hospital</u>	<u>Location</u>	<u>Beds</u>
Hazard Appalachian Regional Hospital	Hazard	148

General hospital facilities and services - radiology, emergency room, pathology and clinical laboratory, home health services, pharmacy, blood bank, intensive care unit, nursery, nuclear medicine and ultrasound services, pulmonary rehabilitation program, 3 major operating rooms, 1 urological operating room, obstetrics, physical therapy, respiratory therapy, family health services, women's clinic, pediatric clinic, W.I.C., rehabilitation counseling, social services, volunteer services, education services, chaplain program, infant care program.

Medical staff - 28 physicians including 4 general surgeons, 2 radiologists, 3 pathologists, 3 internists, 2 pediatricians, 3 OB/GYN specialists, 1 urologist, 1 ophthalmologist, and 1 psychiatrist. 85 licensed practical nurses and 42 registered nurses.

### Ambulance Service

Name - New Breathitt County Ambulance Service

Staff - 8 - (one trained paramedic, two certified for mine rescue, all are trained in basic first aid and cardiopulmonary resuscitation)

Service - 24-hour service to Breathitt County and adjoining counties if necessary

Equipment - 4 ambulances, fully equipped

### Public Health

Facility - Breathitt County Health Department

Staff - Administrator, 6 registered nurses, 3 licensed practical nurses, 1 nutritionist, 7 clerks, 6 community health workers, 1 environmentalist



## OTHER LOCAL FACILITIES

### Communications

Telephone - South Central Bell Telephone Company  
Services - Standard

Telegraph - Western Union Telegraph Company  
Services - For telegram, mailgram and international messages,  
call toll-free 1-800-325-5100

Postal - U. S. Post Office  
Class - First  
Mail received - Once daily  
Mail dispatched - Once daily

Newspapers - The Jackson Times  
Weekly and circulation - 5,300  
Other papers  
received from - Louisville and Lexington, Kentucky

Radio - WEKG-AM, WMTC-AM, WJSN-FM  
Stations received from - Hazard and Lexington, Kentucky; Indianapolis,  
Indiana; Cincinnati, Ohio; Nashville,  
Tennessee

Television -  
Cable service  
Reception from - Hazard and Lexington, Kentucky; Johnson City and  
Bristol, Tennessee  
Kentucky Educational  
Television - Channel 35, Hazard transmitter

### Library Services

Public library - Breathitt County Public Library  
Size collection - 15,451 volumes  
Circulation, 1980-81 - 34,229  
Services - genealogy, records and record player, magazines, pictures,  
story hour, film strip machine, community room, color TV, bookmobile,  
services to shut-ins, microfilm reader-printer, movie projector,  
duplicator, overhead projector, radio story hour, Interlibrary  
Loans

Religious Institutions

Number of churches - 11  
Denominations - Baptist  
Catholic  
Christian  
Church of God  
First Church of God  
First Methodist  
Free Methodist  
Full Gospel  
Pentecostal  
Presbyterian  
United Methodist

Nearest Synagogues - Lexington, Kentucky, 85 miles northwest  
Congregations - Adath Israel (reform)  
Ohavey Zion (traditional)

Financial Institutions

<u>Banks</u>	<u>Assets</u>	<u>Deposits</u>	<u>Statement Date</u>
Citizens Bank of Jackson	\$38,013,378.56	\$33,972,140.61	12/31/80
The First National Bank	31,983,031.06	28,272,728.09	6/30/81

Hotels and Motels

Total number - 4  
Total rooms - 109

## Clubs and Organizations

Beta Club  
Blue Lodge  
Boy Scouts of America  
Breathitt County Improvement Association  
Breathitt County Industrial Development  
Foundation, Inc.  
Breathitt Youth Foundation  
Brownies  
Circle "K" Club  
Cub Scouts of America  
Daughters of America  
Daughters of American Revolution  
Eastern Star  
4-H Club  
Future Farmers of America (FFA)  
Future Homemakers of America (FHA)  
Future Teachers of America (FTA)  
Girl Scouts of America  
Jackson-Breathitt County Airport  
Board  
Jackson Junior Women's Club  
Jaycees  
Junior Women's Club  
Kiwanis International  
Lions  
Masonic Lodge  
Ministerial Association  
Royal Arch  
Women's Club



## RECREATION

### Local

Recreational facilities in Jackson include the Jackson Recreation Park, which is a 5-acre park designed for family outings and contains two softball/baseball diamonds, two tennis courts, a shelter house, a concession stand, restrooms, a picnic area and an equipped playground. In addition, four playgrounds, a swimming pool, a movie theater, two lighted tennis courts, a picnic area and a supervised little league program is available.

A special event for the citizens of Jackson is the Breathitt County Honey Festival. Usually held during the Labor Day weekend, the 3-day event offers fun, music, crafts, a parade, a truck rally and a 10,000 meter run.

### Area (Within 85 miles)

The Daniel Boone National Forest is located within an hour's drive of Jackson. This vast timberland stretches through most of Kentucky's Eastern Region, northeast to south, and within its 650,000 acres lies much of Kentucky's beauty. Throughout the forest are picnic areas, hiking trails, and camping, fishing and boating facilities.

Natural Bridge State Resort Park at Slade, 35 miles northwest of Jackson, is a 1,899-acre park located in the Daniel Boone National Forest where cliffs and stone arches fill the landscape. The rugged awesomeness of the great Natural Bridge, the largest of 12 natural sandstone arches in the park, is the main attraction. The park has a 35-room resort lodge with a dining room and gift shop, efficiency and one-bedroom cottages, and 95 camping sites. Other facilities include a 54-acre lake, a swimming pool, picnic shelters and playgrounds, hiking trails, and a riding stable. A skylift going up to Natural Bridge is operated from April 15 to October 31 each year.

Located in the Daniel Boone National Forest near the park is the Red River Gorge. This is a spectacular boulder-strewn area of rugged woodlands, streams, limestone cliffs, overlooks, arches, and rare plant and animal life. There are 59 natural sandstone arches located in the general area and 3 waterfalls located in the gorge.

Buckhorn Lake State Resort Park, 38 miles south of Jackson at Buckhorn, is a full-facility resort park with a 36-room lodge. The lodge itself offers a dining room with a lake view, a gift shop, a pool, meeting rooms, and a recreation room. Other park facilities and activities include a beach, a bathhouse, a picnic shelter, 72 campsites, a playground, mini-golf, tennis, a dock with open and covered slips, boat rentals, a 40-foot levee plus a fishing pier, bicycle rentals, and planned recreation.

Lexington, located 85 miles northwest of Jackson, is an outstanding Kentucky center for sports and cultural events and the site of many historic buildings and homes.

Sports and entertainment events are available at Rupp Arena (seating capacity 23,000) in the Lexington Center. Rupp Arena is the home court of the 5-time NCAA basketball champions, the University of Kentucky Wildcats. A convention center, hotel, shopping mall, and numerous restaurants round out the facilities at the center. The 57,000-seat University of Kentucky Commonwealth Stadium is the scene of UK's home football games.

Some of the finest thoroughbred and harness racing in the world is available at Keeneland Race Course and the Red Mile Trotting Track. The Lexington Junior League Horse Show, the nation's largest outdoor saddlehorse show, is held at the trotting track each July. The Kentucky Horse Park was recently completed and hosted the World Championship Three Day Event - The first time the event has ever been held in the United States. Facilities at the park include a visitors information center with a film presentation, a museum, a gift shop, a walking tour, an events area, horseback and pony rides, horse-drawn rides, a vehicle demonstration area, a restaurant, a picnic area and a campground. Several private companies offer tours of Lexington thoroughbred, standardbred and saddlebred horse farms.

The Lexington Opera House hosts national tours of Broadway shows, concerts by the Lexington Philharmonic Orchestra and the Central Kentucky Youth Symphony and Youth Concert Orchestras, and productions of the Lexington Children's Theatre and the Lexington Ballet.

The Chamber Music Society of Central Kentucky presents concerts annually featuring chamber music ensembles of national and international reputation. In addition to its regular subscription concerts, the Lexington Philharmonic Orchestra performs youth concerts, operas, summer concerts in city parks and performances in the Fayette County Schools. Subscriptions are available to the Central Kentucky Concert and Lecture Series which sponsors appearances by World Renowned groups and individuals in the arts and sciences.

The Lexington Lions Club Blue Grass Fair held each summer at Masterson Station Park has the distinction of being the largest U. S. fair under canvas. A Bluegrass music festival is also held at Masterson Station Park.



