

1988

Industrial Resources: Calloway County - Murray

Kentucky Library Research Collections
Western Kentucky University, spcol@wku.edu

Follow this and additional works at: https://digitalcommons.wku.edu/calloway_cty

 Part of the [Business Administration, Management, and Operations Commons](#), [Growth and Development Commons](#), and the [Infrastructure Commons](#)

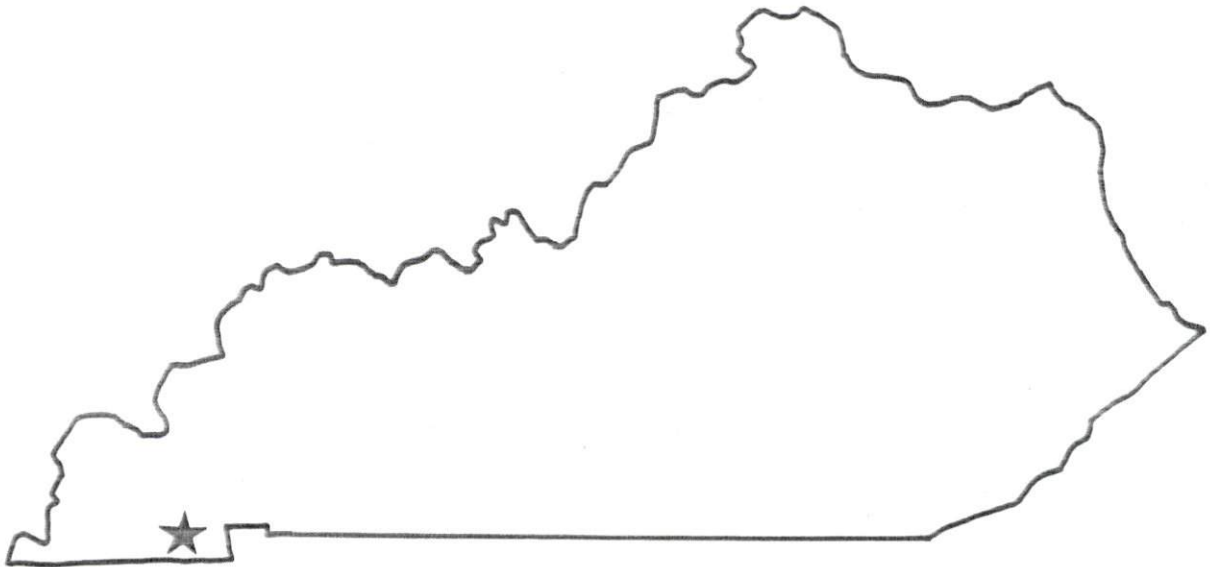
Recommended Citation

Kentucky Library Research Collections, "Industrial Resources: Calloway County - Murray" (1988). *Calloway County*. Paper 5.
https://digitalcommons.wku.edu/calloway_cty/5

This Report is brought to you for free and open access by TopSCHOLAR®. It has been accepted for inclusion in Calloway County by an authorized administrator of TopSCHOLAR®. For more information, please contact topscholar@wku.edu.

RESOURCES FOR ECONOMIC DEVELOPMENT

Murray



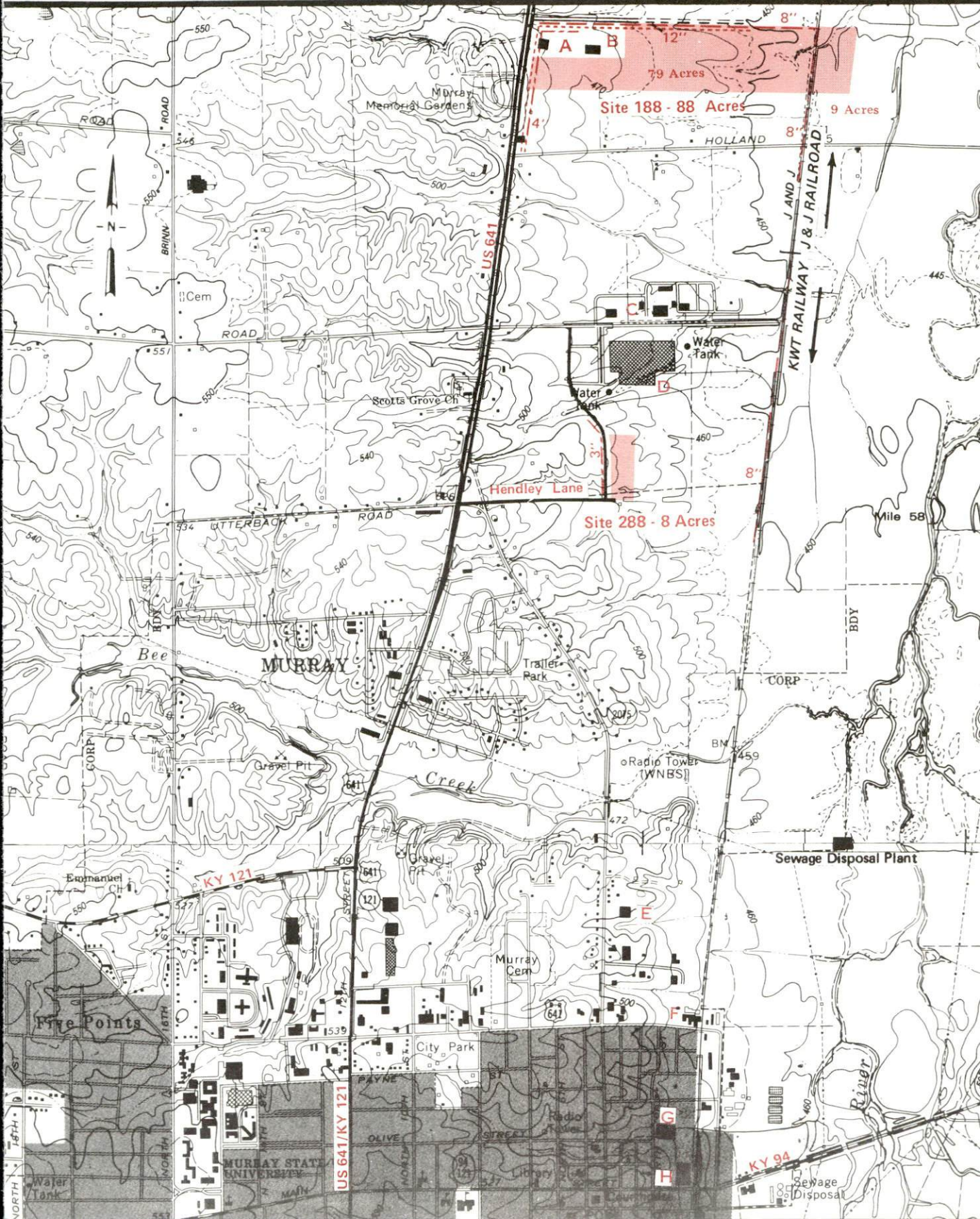
KENTUCKY

Open for Business

For more information contact the Cabinet for Economic Development, Department of Business Development, Industrial Development & Marketing Division, Capital Plaza Tower, Frankfort, Kentucky 40601 (502-564-7140)

MURRAY, KENTUCKY

Industrial Sites - 1988



Site 188 - 88 Acres

LOCATION: Approximately 1.1 miles north of city limits
ZONING: Industrial (I-1)
HIGHWAY ACCESS: US 641 adjacent to western boundary
RAILROAD: J & J Railroad passes through eastern portion of site
WATER: Murray Water and Wastewater System
 Size Line: 12-inch line along western and northern boundary
SEWERAGE: Murray Water and Wastewater System
 Size Line: 8-inch line along northern boundary
NATURAL GAS: Murray Natural Gas System
 Size Line: 4-inch line along western boundary
ELECTRICITY: West Kentucky RECC
OWNERSHIP: Murray/Calloway County Economic Development Corporation
SCHOOL DISTRICT: Calloway County

Site 288 - 8 Acres

LOCATION: Adjacent to northeastern city limits
ZONING: Industrial
HIGHWAY ACCESS: Paved access road adjacent to western boundary;
 Hendley Lane adjacent to southwestern corner; US 641 approximately
 0.4 mile west via Hendley Lane
RAILROAD: KWT Railway approximately 2,000 feet east
WATER: Murray Water and Wastewater System
 Size Line: 12-inch line approximately 400 feet northwest
SEWERAGE: Murray Water and Wastewater
 Size Line: 8-inch line approximately 1900 feet east
NATURAL GAS: Murray Natural Gas System
 Size Line: 3-inch line adjacent to western boundary across paved
 access road
ELECTRICITY: West Kentucky RECC
OWNERSHIP: City of Murray
SCHOOL DISTRICT: Calloway County

SCALE: 1 inch = 2000 feet
CONTOUR INTERVAL: 10 feet
BASE: USGS 7.5 minute series - 1969
 Photorevised - 1986

UTILITIES

----- Water Line
----- Sewer Line
----- Gas Line

Existing Industries

- A Southeastern Book Co.
- B Available Industrial Bldg. (51,200 sq. ft.)
- C Vanderbilt Chemical Corp.
- D Fisher Price
- E Sager G Love Corp.
- F Ryan Milk Co.
- G Kenlake Foods
- H Briggs and Stratton Corp.

RESOURCES FOR ECONOMIC DEVELOPMENT

MURRAY, KENTUCKY

Prepared by
The Kentucky Department of Business Development
Division of Research and Planning
in cooperation with
The Murray-Calloway County Chamber of Commerce

1988

Program manager - Andrew Dennis; research - Jerry Tolliver; clerical - Bobbi Graves; graphics - Tony Cecconi, Robert Owens, Pat Coleman; cartography - Site Evaluation Branch, Division of Industrial Development and Marketing. Cost of printing paid from state funds.

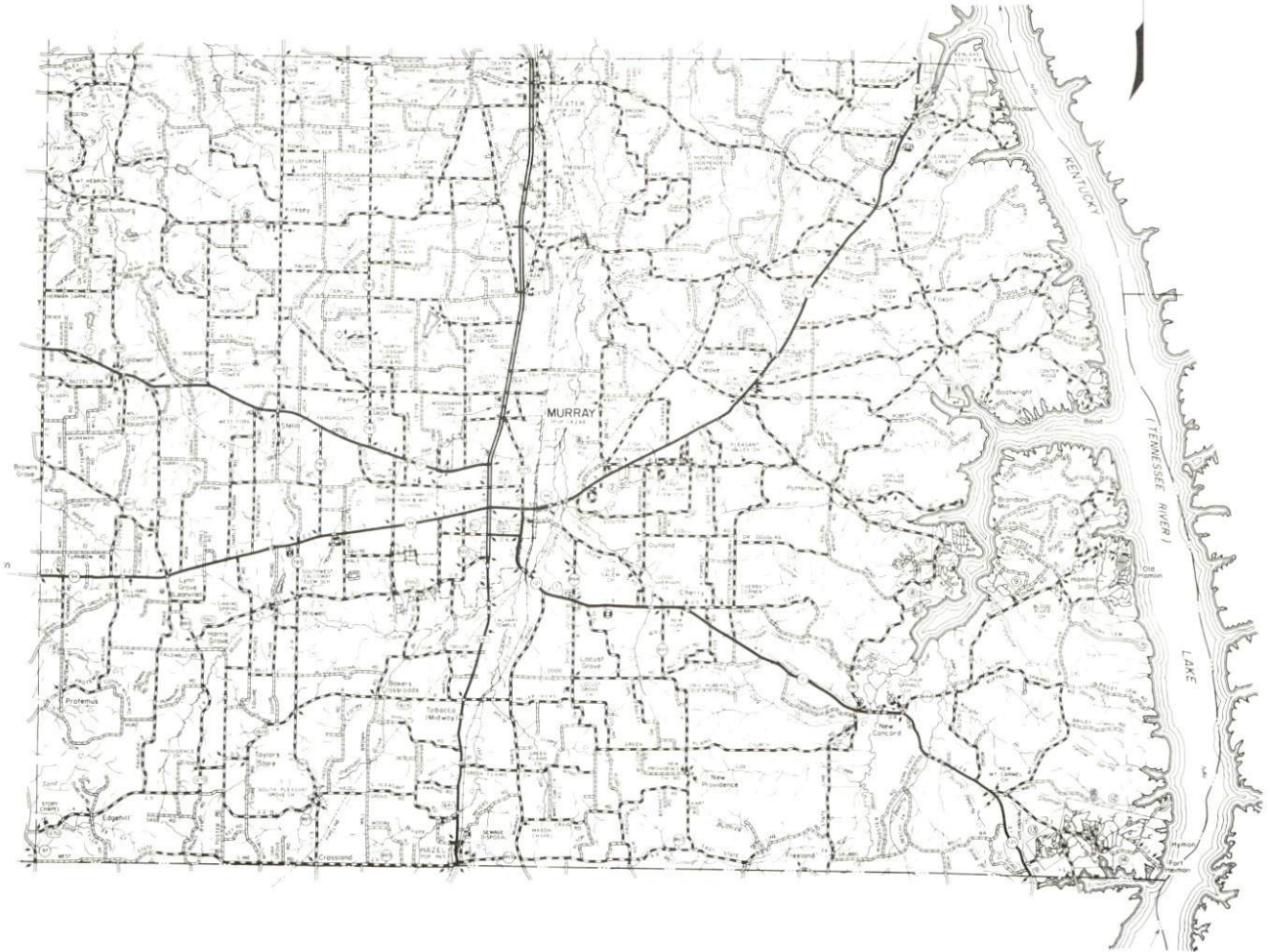
TABLE OF CONTENTS

<u>Chapter</u>	<u>Page</u>
INDUSTRIAL SITES	i
MURRAY, KENTUCKY - A RESOURCE PROFILE	1
THE LABOR MARKET STATISTICS	2
Population	2
Population Projections	2
Labor Force Characteristics of Residents, 1986	3
Selected Components of Nonagricultural Employment, by Place of Work, 1986.	3
Per Capita Personal Income	4
Estimated Male Labor Supply	5
Estimated Female Labor Supply	5
Average Weekly Wages by Industry, by Place of Work, 1986.	6
EXISTING INDUSTRY	8
Murray Manufacturing Firms, Their Products and Employment	8
Labor Organizations in Manufacturing Firms	10
Selected Industrial Services.	10
TRANSPORTATION	11
Rail	11
Highways	11
Truck Service	12
Air	13
Air Express Service	14
Water	14
POWER AND FUEL	15
Electricity	15
Natural Gas	16
Other Fuels	16
WATER AND SEWERAGE	17
Public Water Supply	17
Raw Water	18
Sewerage	18
CLIMATE	20

<u>Chapter</u>	<u>Page</u>
LOCAL GOVERNMENT	21
Structure	21
Planning and Zoning	21
Local Fees and Licenses	21
State and Local Property Taxes	22
Combined State and Local Rates Per \$100 Valuation, 1987	22
Safety	23
Police	23
Fire	23
Rescue Service	23
Refuse Collection and Disposal	23
EDUCATION	24
Public Schools	24
Area Colleges and Universities	25
Vocational Training	26
HEALTH	28
Local Medical Personnel	28
Hospitals	28
Other Medical Facilities	28
Ambulance Service	28
OTHER LOCAL FACILITIES	29
Communications	29
Library Services	29
Religious Institutions	30
Financial Institutions	30
Hotels and Motels	30
RECREATION	31
COMMUNITY IMPROVEMENTS	33

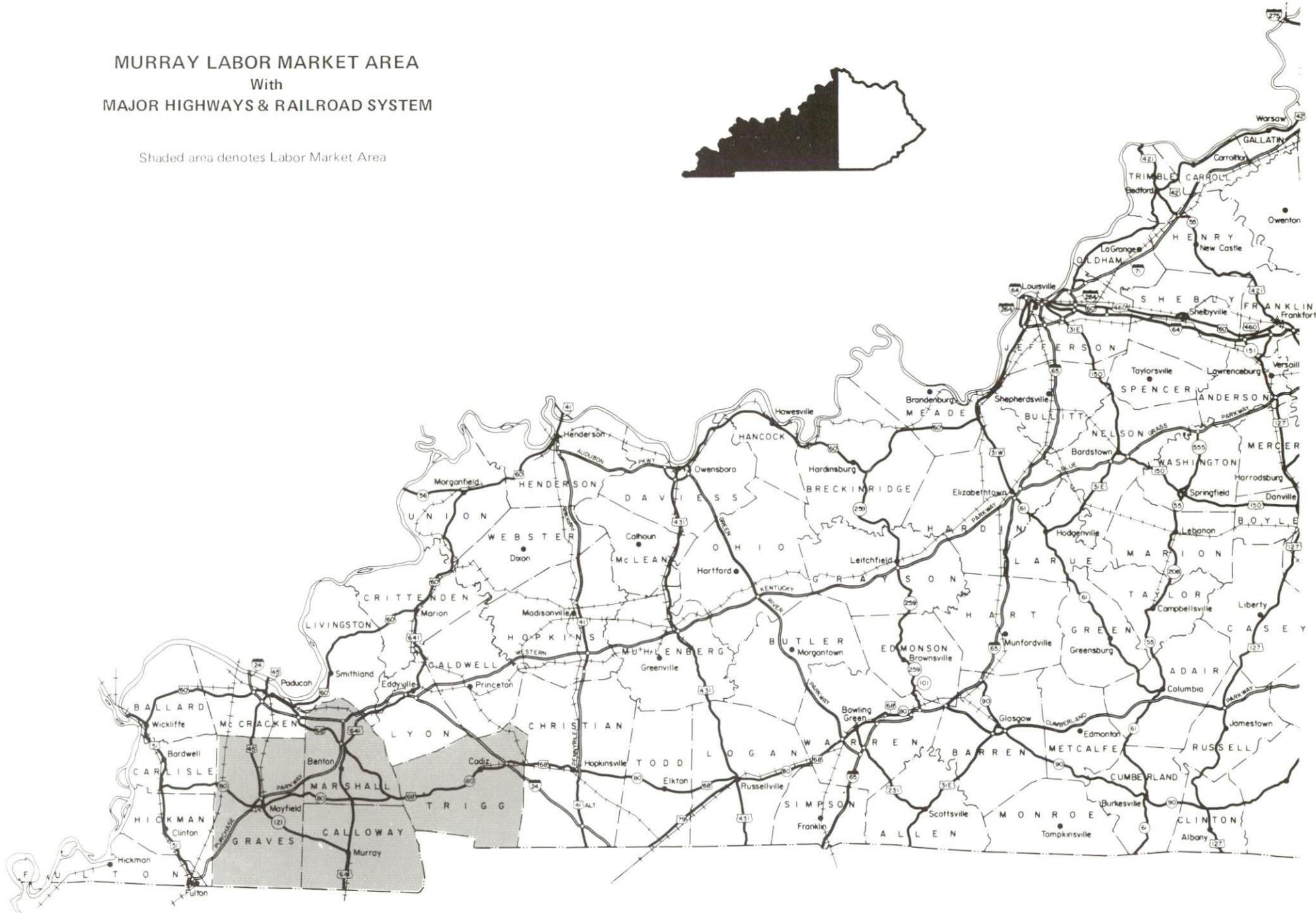
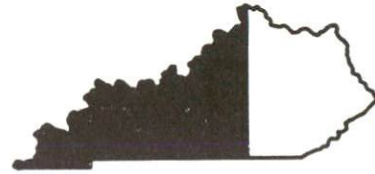
1987 EDITION
GENERAL HIGHWAY MAP
CALLOWAY COUNTY
KENTUCKY

PREPARED BY THE
KENTUCKY TRANSPORTATION CABINET
DEPARTMENT OF HIGHWAYS
DIVISION OF PLANNING
IN COOPERATION WITH THE
U.S. DEPARTMENT OF TRANSPORTATION
FEDERAL HIGHWAY ADMINISTRATION



MURRAY LABOR MARKET AREA With MAJOR HIGHWAYS & RAILROAD SYSTEM

Shaded area denotes Labor Market Area



MURRAY, KENTUCKY - A RESOURCE PROFILE

Murray, home of Murray State University, is located in extreme southwestern Kentucky. Murray, with a 1986 estimated population of 13,100, is the county seat of Calloway County.

Calloway County covers 386 square miles of gently rolling plain in Kentucky's Jackson Purchase Region. Kentucky Lake marks the eastern boundary of the county and the southern boundary is the Kentucky-Tennessee state line. The 1986 estimated population of Calloway County was 28,700.

Murray's location places the city 122 miles northwest of Nashville, Tennessee; 228 miles southwest of Louisville, Kentucky; and 213 miles southeast of St. Louis, Missouri.

The Economic Framework - The total number of Calloway County residents employed in 1986 averaged 14,178. Manufacturing firms in the county reported 1,996 employees; wholesale and retail trade provided 2,613 jobs; 949 people were employed in service occupations; state and local government accounted for 2,722 employees; and contract construction firms provided 413 jobs.

Labor Supply - There is a current estimated labor supply of 5,532 men and 8,156 women available for industrial jobs in the Kentucky portion of the labor market area. In addition, from 1988 through 1992, 3,400 young men and 3,200 young women in the area will become 18 years of age and potentially available for industrial jobs.

Transportation - Railroad service is provided to Murray by the K.W.T. Railway and the J & J Railroad. The primary highway serving Murray is U.S. Highway 641, a "AAA"-rated (80,000-pound gross load limit) trucking highway. The Purchase Parkway, a multi-lane toll road, is just 19 miles north of Murray via U.S. 641. Interstate 24 is 27 miles north of Murray via U.S. 641 and the Purchase Parkway. Truck service is provided to Murray by 16 common carriers which provide interstate and/or intrastate service. The Murray-Calloway County Airport, 5 miles northwest of the city, has a 5,000-foot paved runway. The nearest scheduled commercial airline service is available at Barkley Regional Airport in Paducah, 48 miles northwest of Murray. The Nashville Metropolitan Airport is 128 miles southeast of Murray.

Power and Fuel - The Murray Electric System provides electric service to Murray. West Kentucky RECC serves Calloway County. The source of supply for both distributors is Tennessee Valley Authority. Murray Natural Gas System provides natural gas to the city. The source of supply is Texas Gas Resources Corporation. One propane distributor and three distillate fuel oil distributors are located in Murray.

Education - Two public school systems serve Calloway County. The Murray Independent School System and the Calloway County School System are each accredited by the Southern Association of Colleges and Schools. Murray State University is a state-supported institution of higher education offering undergraduate, graduate, and professional programs in the fields of business and public affairs, creative expression, environmental sciences, human development and learning, humanistic studies, and industry technology. Vocational education is available at the Murray Area Vocational Education Center and at the West Kentucky State Vocational-Technical School in Paducah, 48 miles northwest of Murray.

LABOR MARKET STATISTICS

The Murray Labor Market Area includes Calloway County and the adjoining Kentucky counties of Graves, Marshall and Trigg. The southern boundary of Calloway County is formed by the Tennessee state line. The Murray Labor Market Area also includes Henry County in Tennessee.

POPULATION

Area	1986*	1980	1970	Percent Nonwhite
				1980
Murray	13,100	14,248	13,537	6.4
Labor Market Area	97,100	99,101	87,632	-
Calloway County	28,700	30,031	27,692	3.6
Graves County	32,900	34,049	30,939	4.7
Marshall County	25,800	25,637	20,381	0.2
Trigg County	9,700	9,384	8,620	12.7

* Population estimates.

Note: The 1980 city counts of population by race are provisional.

Sources: U.S. Department of Commerce, Bureau of the Census, 1980 Census of Population and Housing, March 1981; 1980 Census of Population, Number of Inhabitants. University of Louisville, Urban Studies Center, Population Unit.

POPULATION PROJECTIONS

Area	1990	1995	2000	2010
Labor Market Area*	101,047	102,623	103,294	103,419
Calloway County	30,423	30,338	30,108	29,367
Graves County	34,184	35,030	35,536	36,217
Marshall County	26,925	27,630	28,004	28,295
Trigg County	9,515	9,625	9,646	9,540

* Calloway County and the three adjoining Kentucky counties.

Source: University of Louisville, Urban Studies Center, Population Research Unit, How Many Kentuckians: Population Forecasts, 1980-2020, the 1986 Edition, Spring 1986.

LABOR FORCE CHARACTERISTICS OF RESIDENTS, 1986

	<u>Calloway County</u>	<u>Labor Market Area*</u>
Civilian Labor Force	14,960	45,913
Employment	14,178	41,746
Unemployment	782	4,167
Rate of Unemployment (%)	5.2	9.1

* Calloway County and the three adjoining Kentucky counties.

Source: Kentucky Cabinet for Human Resources, Kentucky Labor Force Estimates, Annual Averages, 1986.

SELECTED COMPONENTS OF NONAGRICULTURAL EMPLOYMENT
BY PLACE OF WORK, 1986

	<u>Calloway County</u>	<u>Labor Market Area*</u>
All Industries (total)	9,284	27,776
Manufacturing	1,996	8,714
Wholesale & Retail Trade	2,613	6,584
Services	949	3,337
State/Local Government	2,722	5,526
Contract Construction	413	1,196
Mining & Quarrying	*	86

* Calloway County and the three adjoining Kentucky counties.

Note: Excludes domestic workers, railway workers, certain nonprofit corporations, majority of federal government workers, and self-employed workers.
Source: Kentucky Cabinet for Human Resources, Average Monthly Workers Covered by Kentucky Unemployment Insurance Law, 1986.

PER CAPITA PERSONAL INCOME

<u>Area</u>	<u>1980</u>	<u>1984</u>	<u>Percent Change</u>
Calloway County	\$ 6,776	\$ 8,984	32.6
Labor Market Area Range*	\$6,776 - 7,444	\$8,984 - 10,533	-
Kentucky	7,644	10,232	33.9
U.S.	9,494	12,772	34.5

* Calloway County and the three adjoining Kentucky counties.

Sources: U.S. Department of Commerce, Bureau of Economic Analysis. Kentucky Economic Information System, June 1986.

ESTIMATED MALE LABOR SUPPLY
MURRAY LABOR MARKET AREA

Area	Current				Future
	Total Male	Unemployed	Under-employed	Not in Labor Force	Becoming 18 years of age 1988 thru 1992
Labor Market					
Area*	5,532	2,313	2,504	715	3,365
Calloway	1,572	424	1,148	0	850
Graves	1,856	884	692	280	1,228
Marshall	1,635	757	498	380	936
Trigg	469	248	166	55	351

ESTIMATED FEMALE LABOR SUPPLY
MURRAY LABOR MARKET AREA

Area	Current				Future
	Total Female	Unemployed	Under-employed	Not in Labor Force	Becoming 18 years of age 1988 thru 1992
Labor Market					
Area*	8,156	1,854	2,872	3,430	3,181
Calloway	1,434	358	1,076	0	882
Graves	2,852	639	875	1,338	1,104
Marshall	3,102	638	683	1,781	851
Trigg	768	219	238	311	344

* Additional workers may be drawn from other nearby counties.

Note: Unemployed - persons unemployed and actively seeking work; Underemployed - persons employed but working only 14 to 26 weeks per year; Not in Labor Force - represents the number of persons who would enter the labor force if suitable employment were available (based on the assumption that persons in Kentucky would like to participate in the labor force in the same proportion that they do nationally).

Sources: Kentucky Cabinet for Human Resources, Kentucky Labor Supply Estimates by County, 1986. Kentucky Department of Economic Development, Future Labor Supply Becoming 18 Years of Age, 1988 thru 1992.

AVERAGE WEEKLY WAGES BY INDUSTRY
BY PLACE OF WORK, 1986

	<u>Calloway County</u>	<u>Graves County</u>	<u>Marshall County</u>	<u>Trigg County</u>
All Industries	\$275.40	\$330.78	\$400.21	\$257.53
Mining & Quarrying	*	414.05	*	*
Contract Construction	295.57	254.24	393.35	279.20
Manufacturing	329.42	480.66	635.94	310.11
Transportation, Communications & Public Utilities	350.25	452.10	424.10	348.47
Wholesale & Retail Trade	190.30	186.69	187.88	156.10
Finance, Insurance & Real Estate	263.47	291.68	303.28	286.20
Services	250.69	214.40	209.42	182.59
State/Local Government	321.24	313.97	278.49	256.62
Other	202.82	184.32	108.77	155.30

* Not disclosed.

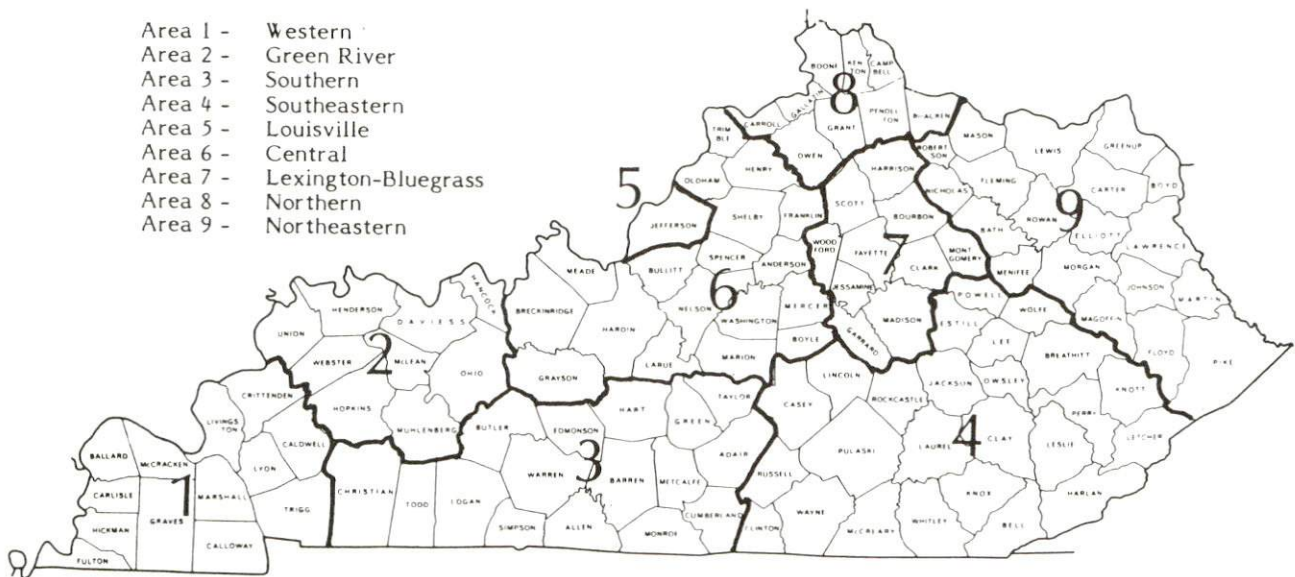
Note: The average weekly wage for each category includes the salaries and wages of all persons working for that type business. For example, the manufacturing category includes both production workers and administrative personnel. Excludes domestic workers, railway workers, certain nonprofit corporations, majority of federal government workers, and self-employed workers.

Source: Kentucky Cabinet for Human Resources, Average Weekly Wages of Workers Covered by Kentucky Unemployment Insurance Law, 1986.

Occupational wage rates for specific industries are usually not available to most government agencies, and wage data furnished to state employment agencies by individual industrial employers are protected from disclosure by federal law. The most reliable up-to-date wage information can be obtained by direct contact with local employers.

Associated Industries of Kentucky, a voluntary organization of Kentucky businesses, regularly collects occupational wage rates and fringe benefits data from participating member firms. Data are compiled for over 127 clearly defined office, production, and service occupations. Tabulations are published for nine geographical areas of Kentucky, as shown on the map below. It should be noted that the data may be weighted by the preponderance of firms in the larger cities and may be somewhat higher than the rates paid in the smaller communities. Data from these tabulations are available, upon request, from the Kentucky Department of Economic Development, Frankfort, Kentucky 40601.

- Area 1 - Western
- Area 2 - Green River
- Area 3 - Southern
- Area 4 - Southeastern
- Area 5 - Louisville
- Area 6 - Central
- Area 7 - Lexington-Bluegrass
- Area 8 - Northern
- Area 9 - Northeastern



Associated Industries of Kentucky Area Wage Surveys

EXISTING INDUSTRY

MURRAY MANUFACTURING FIRMS,
THEIR PRODUCTS AND EMPLOYMENT

Firm (Establishment date)	Product	Average Employment			Labor Unions
		Total	Male	Female	
Jerry Atkins and Associates (1967)	Aluminum storm windows & doors	10	-	-	
Briggs & Stratton Corporation (1985)	Lawn mower engines	530	310	230	
Creative Printers, Inc. (1975)	Job printing	9	7	2	
Ellis Popcorn Company, Inc. (1950)	Popcorn	30	25	5	
Falwell, Inc. (1977)	Custom wood furniture, millwork	2	-	-	
Fisher Price (1973)	Toys	900	350	550	
Fitts Block and Ready Mix Company, Inc. (1945)	Concrete block, ready mixed concrete	17	17	0	
Gibson Ham, Inc. (1946)	Country hams	5	4	1	
Hutson Company (1928)	Feed mix	23	-	-	
Interstate Filter Supply, Inc. (1967)	Oil filters	5	2	3	
Kenlake Foods (1982)	Drink powders & concentrates, gelatine & pudding mixes, salted nut products	120	80	40	
Lassiter Plaster Company, Inc. (1920)	Pre-fab wall panels	105	-	-	Plasterers*
Murray Dock Company (1984)	Boat docks	15	-	-	
Murray Fabrics, Inc. (1955)	Knitted tubing, knitted cuffs & surgical products	19	5	14	
The Murray Ledger and Times, Murray News- papers, Inc. (1879)	Newspaper	38	20	18	

(Continued)

Firm (Establishment date)	Product	Average Employment			Labor Unions
		Total	Male	Female	
Murray Mold & Die Company (1985)	Precision maching, metal stampings, aluminum die cast molds	5	4	1	
Murray Silica Sand, Inc. (1962)	Resin coated silica sand	4	4	0	
Printing Services & Supplies (1964)	Commercial printing	14	-	-	
Redmon Stake Company (1969)	Wood stakes, Christmas tree stands	3	2	1	
Ryan Milk Company (1929)	Sterile cream & sour cream, coffee creamers	106	100	6	Food & Com- mercial Workers*
Sager Glove Corporation (1965)	Safety apparel, gloves	124	24	100	
Thornton Tile and Marble, Inc. (1971)	Cultured marble	10	7	3	
Vanderbilt Chemical Corporation (1969)	Industrial chemical additives	65	62	3	Oil, Chemical & Atomic Workers*
Jack Wallis Stained Glass and Doors (1971)	Wood doors & entryways, stained glass	6	-	-	
Welch Concrete Products (1973)	Septic tanks & manholes	8	7	1	
York Spring Company (1970)	Springs	7	3	4	

* See Labor Organizations on next page.

Sources: Kentucky Department of Economic Development, 1987 Kentucky Directory of Manufacturers; Division of Research and Planning.

LABOR ORGANIZATIONS IN MANUFACTURING FIRMS

<u>Union</u>	<u>Representing workers at:</u>
Oil, Chemical and Atomic Workers International Union, AFL-CIO	Vanderbilt Chemical Corporation
United Food and Commercial Workers International Union, AFL-CIO	Ryan Milk Company
Operative Plasterers' and Cement Masons' International Association of the United States and Canada, AFL-CIO	Lassiter Plaster Company, Inc.

SELECTED INDUSTRIAL SERVICES

<u>Types of Service</u>	<u>Location</u>	<u>Mileage from Murray</u>
Custom Data Processing	Paducah, Kentucky	48
Custom Plastics Producers	Fulton, Kentucky	35
	Kuttawa, Kentucky	43
Electric Motor Repair	Mayfield, Kentucky	21
Grinding, Precision & Tool	Mayfield, Kentucky	21
Heat Treating Facilities	Nashville, Tennessee	122
Industrial Equipment & Supplies	Mayfield, Kentucky	21
Industrial Gases	Paducah, Kentucky	48
Industrial Waste Removal	Paducah, Kentucky	48
Machine Shops, Tool & Die	Murray, Kentucky	-
Metal Castings	McHenry, Kentucky	117
Metal Finishers	Paducah, Kentucky	48
	Greenville, Kentucky	110
Metal Service Centers	Nashville, Tennessee	122
	Nashville, Tennessee	122
Millwrights	Nashville, Tennessee	122
Public Warehouse Facilities	Mayfield, Kentucky	48

Sources: Kentucky Department of Economic Development, Kentucky Directory of Selected Industrial Services, 1987; Division of Research and Planning.

TRANSPORTATION

Rail

Line serving Murray - K.W.T. Railway, Inc.

Services - Branch line; one daily round-trip freight from Murray to Bruceton, Tennessee, where connections can be made with the CSX Transportation System; switching services; team track space for three cars; siding space for 25 cars; the nearest piggyback facilities are operated by Paducah & Louisville Railway at Paducah, Kentucky, 48 miles northwest of Murray. The nearest piggyback facility operated by CSX Transportation is located in Nashville, Tennessee, 122 miles southeast of Murray.

For details on routing, schedules, rates, and services, contact:

General Manager
K.W.T. Railway, Inc.
908 Depot Street
Paris, Tennessee 38242
(901) 642-7942

The J & J Railroad is a locally-owned company which connects with K.W.T. Railway at Murray. J & J Railroad operates one line approximately 11 miles in length between Murray and Hardin, Kentucky. For further information on the J & J Railroad contact:

J & J Railroad
Box 131
Hardin, Kentucky 42048
(502) 437-4102

Highways

Murray is served directly by U.S. Highway 641 and Kentucky Highways 94 and 121. U.S. Highway 641 and Kentucky Highway 121 (west of Murray) are "AAA"-rated (80,000-pound gross load limit) trucking highways. Kentucky Highways 94 and 121 (east of the city) are "AA"-rated (62,000-pound gross load limit) trucking highways.

The Purchase Parkway, a multi-lane toll road, is 19 miles north of Murray via U.S. Highway 641, or 23 miles northwest of Murray via Kentucky Highway 121.

Interstate 24, a major east-west highway, is 27 miles north of Murray via U.S. 641 and the Purchase Parkway.

Truck Service

A & H Truck Line, Inc.*	Majors Transit, Inc.*
Advance Transportation Company*	Manning Motor Express, Inc.*
American Freight System, Inc.**	Milan Express Company, Inc.*
Averitt Express, Inc.*	Overnite Transportation Company*
Bailey's Express, Inc.*	P-I-E Nationwide, Inc.*
Consolidated Freightways	Paschall Truck Lines* (T)
Corporation of Delaware*	Roadway Express, Inc.*
Edwards, Henry Trucking Company*	Smith's Transfer Corporation*
Jones Truck Lines, Inc.*	Yellow Freight System, Inc.*

(T) Local terminal.

* Interstate and intrastate service.

** Interstate service only.

Source: American Motor Carrier Directory, Fall 1987.

HIGHWAY MILES AND TRUCK TRANSIT TIME IN DAYS FROM MURRAY, KENTUCKY, TO SELECTED MARKET CENTERS

City	Highway Miles	Delivery		City	Highway Miles	Delivery	
		Time TL				Time TL	
Atlanta, GA	364	2		Los Angeles, CA	1,985	4	
Baltimore MD	807	3		Louisville, KY	228	1	
Birmingham, AL	318	2		Nashville, TN	122	1	
Chicago, IL	405	2		New Orleans, LA	558	2	
Cincinnati, OH	329	2		New York, NY	969	4	
Cleveland, OH	573	2		Pittsburgh, PA	609	4	
Detroit, MI	588	2		St. Louis, MO	213	1	
Knoxville, TN	299	2					

Note: Mileage computations are via the best interstate or primary highways, not necessarily the most direct route of travel.

Sources: Rand McNally Deluxe Motor Carriers' Road Atlas, 1987. Official Kentucky Mileage Map, 1980. Delivery time - Overnite Transportation Company, Highways 68 & I-24, Paducah, Kentucky 42001.

Air

Local

Murray-Calloway County Airport (Kyle-Oakley Field)*

Location: 5 miles northwest of Murray

Runways: One paved

Length: 5,000 feet

Traffic

Control: Wind sock

Lighting: Rotating beacon and radio control runway lighting system

Services: 80 and 100 octane and jet fuel, hangar, tie-down, charter service, agricultural service, flight instruction, maintenance and repair

Air Freight Service: Chartered air freight services must be arranged

Nearest Scheduled Commercial Airline Service

Barkley Regional Airport

Location: 6 miles west of Paducah, Kentucky;
48 miles northwest of Murray

Runways: 2 paved

Length: 6,499 feet; 4,000 feet

Traffic

Control: Control tower

Lighting: HIRL, MALSRAIL, REIL, VASI, MIRL, MITL, rotating beacon

Services: Allegheny Commuter, American Eagle, Northwest Air Link, Trans World Express, fuel - 100LL and jet-A; hangar, 10 T-hangars, 45 tie-downs; major and minor A & P repairs; APU, charter, flight instruction, plane rental, aerial photography; car rentals, limousine, restaurant, weather information; Part 139 Airport Operating Certificate, airport security

Air Freight Service: Air carriers accept air freight on a space available basis

(Continued)

* Construction of a second (2,200-foot) taxi way was completed at an estimated cost of \$300,000. Additional aircraft parking areas have been constructed and an upgraded lighting system and an improved instrument handling system will be installed the spring of 1988.

Location: Nashville Metropolitan Airport
 6 miles southeast of Nashville, Tennessee;
 128 miles southeast of Murray
 Runways: 3 paved
 Length: 8,500 feet; 7,700 feet; 4,300 feet
 Traffic
 Control: Control tower
 Lighting: Beacon, runway
 Services: American, Delta, Eastern, Pan Am, Piedmont,
 Northwest, TWA, United, USAir, Allegheny Commuter,
 Southwest, Comair, Braniff, American Eagle; fuel -
 100LL, jet-A; tie-downs, hangars; major A & P
 repairs, major Avionics repairs; APU, charter,
 flight instruction, oxygen, plane rental, survival
 equipment, U.S. Customs; taxi, limousine, car
 rental, courtesy car, public transit; weather
 information; restaurants, snack bars, hotel,
 business center
 Air Freight
 Service: Air freight terminal

Air Express Service

Several major companies offer air express services in Kentucky. These companies provide a quick means of shipping small to medium-sized packages expeditiously.

Water

The Port of Murray-Calloway County is located on Kentucky Lake, approximately 12 miles from Murray. This large, privately-owned port is owned by the Hutson Company, Inc., and Hutson Grain, Inc., and is operated by the Hutson Company and the Pillsbury Company. The port can accommodate the unloading of bulk commodities and the loading of grain simultaneously.

POWER AND FUEL

Electricity

Company serving Murray and parts of Calloway County - Murray Electric System

Source of power - Tennessee Valley Authority
For industrial rates contact:

Murray Electric System
P. O. Box 1095
401 Olive Street
Murray, Kentucky 42071

and/or

South Kentucky Industrial Development
Association, Inc.
P. O. Box 726
Hopkinsville, Kentucky 42240
(502) 885-5392

Company serving majority of Calloway County - West Kentucky Rural Electric Cooperative Corporation

Source of power - Tennessee Valley Authority
For industrial rates contact:

South Kentucky Industrial Development
Association, Inc.
P. O. Box 726
Hopkinsville, Kentucky 42240
(502) 885-5392

and/or

West Kentucky RECC
1218 West Broadway
P. O. Box 589
Mayfield, Kentucky 42066
(502) 247-1321

Natural Gas

Company serving **Murray** - Murray Natural Gas System
Source of supply - Texas Gas Resources Corporation
Size of transmission mains - 26-inch (supplier); 6-inch (distributor)
Distribution mains - 1-, 2-, and 4-inch
Distribution pressure - 15 to 45 psi
Btu content - 1,005 per cubic foot
Specific gravity - 0.60
For rates and supplies contact:

Murray Natural Gas System
P. O. Box 466
Murray, Kentucky 42071
(502) 753-5631

Other Fuels

Propane

Suburban Propane
405 S. Railroad Avenue
Murray, Kentucky 42071

Fuel oils

Distillate fuel oil -

Belcher Oil Company, Inc.
(bulk plant)
403 L.P. Miller Street
Murray, Kentucky 42071

Richard Orr Distributing Company
(bulk plant)
1109 Pogue Avenue
Murray, Kentucky 42071

Kentucky Lake Company, Inc.
(bulk plant)
P. O. Box 368
Murray, Kentucky 42071

Residual fuel oil - Arrangements must be made with the refinery.

Low sulphur content coal - Available in Kentucky.

WATER AND SEWERAGE

Public Water Supply

Company serving Murray - Murray Water and Wastewater System
 200 Andrus Drive
 P. O. Box 6
 Murray, Kentucky 42071
 (502) 753-4321

Source - Five deep wells (pumping capacity of 1,000 gpm each)
 Treatment plant capacity - 5,000,000 gallons per day
 Average daily consumption - 2,500,000 gallons
 Peak daily consumption - 3,055,000 gallons
 Treatment processes - Aeration, sedimentation, filtration, chlorination,
 fluoridation, hexametaphosphate, sodium hydroxide
 Storage capacity - 3,200,000 gallons, including clear well
 Size lines - 6, 8, 10 and 12 inches
 Water pressure - 50 to 100 psi

MONTHLY WATER RATES

Inside City

First	2,000 gallons	\$4.00 (Minimum)
Next	2,000 gallons	1.25 per M gallons
Next	2,000 gallons	1.10 per M gallons
Next	2,000 gallons	.95 per M gallons
Next	2,000 gallons	.80 per M gallons
Next	50,000 gallons	.70 per M gallons
All over	60,000 gallons	.57 per M gallons

Outside City

First	2,000 gallons	\$4.80 (Minimum)
Next	2,000 gallons	1.50 per M gallons
Next	2,000 gallons	1.32 per M gallons
Next	2,000 gallons	1.14 per M gallons
Next	2,000 gallons	.96 per M gallons
Next	50,000 gallons	.84 per M gallons
All over	60,000 gallons	.69 per M gallons

Tap-on charge:

<u>Meter Size</u>	<u>Inside City</u>	<u>Outside City</u>
3/4-inch	\$150	\$300
1-inch	200	400
1 1/2-inch	300	600
2-inch	350	700
All over 2 inches	Cost of materials and labor	

Raw Water

Surface water sources - Kentucky Lake, West Fork Clarks River and East Fork Clarks River

Average discharge - West Fork Clarks River near Brewers, Kentucky - 95.5 cfs (15 years, USGS)

Expected ground water yield - 5 to 50 gpm along the eastern edge of the county bordering Kentucky Lake, 500 to 1,000 gpm in the remainder of the county

Sewerage

Company serving Murray - Murray Water and Wastewater System*
200 Andrus Drive
P. O. Box 6
Murray, Kentucky 42071
(502) 753-4321

Design capacity - 3,500,000 gallons per day

Average daily flow - 2,750,000 gallons

Type of treatment - Secondary

Treatment processes - Grit removal, oxidation ditch, activated sludge, secondary sedimentation, chlorination, sludge drying beds

Treated effluent discharged into - Bee Creek to Clarks River

Size of sanitary mains - 6 to 24 inches

Size of storm mains - N/A

Monthly rates -

Inside City

First	2,000 gallons	\$4.00 (Minimum)
Next	2,000 gallons	1.69 per M gallons
Next	2,000 gallons	1.49 per M gallons
Next	2,000 gallons	1.28 per M gallons
Next	2,000 gallons	1.08 per M gallons
Next	50,000 gallons	.95 per M gallons
All over	60,000 gallons	.75 per M gallons

Outside City

First	2,000 gallons	\$4.80 (Minimum)
Next	2,000 gallons	2.03 per M gallons
Next	2,000 gallons	1.79 per M gallons
Next	2,000 gallons	1.54 per M gallons
Next	2,000 gallons	1.30 per M gallons
Next	50,000 gallons	1.14 per M gallons
All over	60,000 gallons	.90 per M gallons

* Murray Water and Wastewater System began operation of a new 3.5-million-gallon-per-day wastewater treatment plant in May 1984. The \$10 million project also included the replacement and repair of collection lines. Operation of the old wastewater treatment plant has been discontinued.

Surcharge for Excessive Strength. Users having a discharge over the normal sewage strength of 300 mg/1 suspended solids (SS) and/or 250 mg/1 biochemical oxygen demand (BOD) shall incur an additional charge of \$0.12 per pound of suspended solids and \$0.14 per pound of biochemical oxygen demand.

Tap-on charge:

Actual cost
\$200 minimum inside city
\$400 minimum outside city

CLIMATE

Calloway County

Temperature

Normal (30-year record)	59.10 degrees
Average annual 1986	60.30 degrees
Record highest, July 1952 (47-year record)	107.00 degrees
Record lowest, January 1985 (47-year record)	-17.00 degrees
Normal heating degree days (30-year record) (Heating degree day totals are the sums of negative departures of average daily temperatures from 65 degrees F.)	3,756

Precipitation

Normal (30-year record)	48.49 inches
Mean annual snowfall (30-year record)	3.00 inches
Total precipitation 1986	31.60 inches
Mean number days precipitation (.01 inch or more) (45-year record)	119.20
Mean number days thunderstorms (45-year record)	53.90

Prevailing winds (through 1963)

South

Relative Humidity (21-year record)

6 a.m.	79 percent
Midnight	84 percent
6 a.m.	58 percent
Noon	61 percent

Source: U.S. Department of Commerce, Environmental Science Services Administration, Climatological Data, 1986. Station of record: Nashville, Tennessee.

LOCAL GOVERNMENT

Structure

The city of Murray is served by a mayor and 12 council members. The mayor is elected to a four-year term and the council members serve two-year terms. Calloway County is served by a county judge/executive and four magistrates. The judge/executive and magistrates are elected to four-year terms.

Planning and Zoning

City agency - Murray Planning Commission
Zoning enforced - Within city of Murray
Subdivision regulations enforced - Within city limits and 4 miles from the intersection of 12th and Main Streets
Local codes enforced - Building and housing
Mandatory state codes enforced - Kentucky Plumbing code, National Electric Code, Kentucky Boiler Regulations and Standards, Kentucky Building Code (modeled after BOCA code)

Local Fees and Licenses

The city of Murray levies a business license fee ranging from \$16.50 to \$440 per year, depending on the type of business. The city also levies an annual vehicle sticker fee of \$15 for automobiles, \$3 for motorcycles, and \$20 for trucks over 1.5 tones

A 3 percent tax is levied on utilities receipts for schools in Calloway County. Tax is paid by all consumers of utilities as an add-on to the utilities bills. Exempted are receipts from utilities services that are resold and the receipts from the sale of energy or energy producing fuels that exceed 3 percent of the cost of production in manufacturing, processing, mining or refining.

State and Local Property Taxes

All property in Kentucky, except items exempted by the state constitution, is taxed by the state. Property which also may be taxed by local jurisdictions includes land and buildings, finished goods inventories, automobiles, trucks, office furniture and office equipment. Local taxing jurisdictions in Kentucky include counties, cities, and school districts.

All property in Kentucky is assessed at 100 percent of fair cash value.

COMBINED STATE AND LOCAL RATES PER \$100 VALUATION, 1987

	Site Inside City of Murray and Within the Murray Independent School District	Site Inside City of Murray and Within the Calloway County School District	Site Inside Unincorporated Calloway County
Land and Buildings	\$1.0549	\$0.8799	\$0.543
Manufacturing			
Machinery	0.150	0.150	0.150
Pollution Control			
Equipment	0.150	0.150	0.150
Inventories			
Raw materials	0.001	0.001	0.001
Goods in Process	0.001	0.001	0.001
Finished Goods	0.8679	0.6929	0.356
Automobiles & Trucks	1.382	1.184	0.804
Other Tangible			
Personal Property	1.3169	1.1419	0.805
Intangibles (Accounts receivable*, money in hand, stock, notes, bonds)	0.250	0.250	0.250
Goods Stored in Public Warehouses in Transit Status	0.001	0.001	0.001
Private Leaseholds in Industrial Revenue Bond Financed Facilities	0.015	0.015	0.015

* Accounts receivable are taxed at 85 percent of face value, for an effective rate of \$0.2125 per \$100 valuation.

Safety

Police	Murray	Calloway County
Total staff	27	9
Radio-patrol cars	5	5
Fire*		
Insurance Services Office, Public Protection Classification	4	**
Full-time staff	26	
Volunteers	0	
Rescue Service		

Rescue service is provided by the Calloway County Fire-Rescue, Inc.

Refuse Collection and Disposal

Refuse collection and disposal is provided to residents of Murray by the city of Murray. Residents of Calloway County are provided refuse collection and disposal by private contractors.

* Includes copyrighted material of ISO Commercial Risk Services, Inc., with its permission.

** Twelve fire protection districts serve Calloway County. Class 10 applies to unincorporated areas not contained within a fire district.

EDUCATION

Public Schools

	Murray Independent*	Calloway County**
Total Enrollment (Fall 1987)	1,296	2,993
Kindergarten	117	205
Elementary	407	1,183
Middle School	357	640
High School	415	949
Exceptional Children	-	16
Pupil-Teacher Ratio (1985-86)	18-1	19-1
Percent High School Graduates to College (1985-86)	69.4	51.5
Expenditures Per Pupil (1985-86)	\$2,387.60	\$2,029.05

* The Murray Independent School System constructed additional resource rooms at the Robertson Center at a cost of \$149,000. Murray Independent is currently developing a robotics program, secondary curriculum study, and implementing a process approach to teaching writing, K-12, across the curriculum.

** A 22,000-square-foot addition to the Calloway County High School was recently completed. The improvements include: a new business and office complex; chemistry-physics labs and preparation areas; two computer labs; and other classrooms and restrooms. A 20,000-square-foot addition to the Calloway County Middle School was also recently completed. The improvement included construction of rooms necessary to bring sixth graders to the middle school. Total costs for the high school and middle school additions was \$1,650,000.

Area Colleges and Universities

<u>Name</u>	<u>Location (Miles distant)</u>	<u>Enrollment (Fall, 1987)</u>	<u>Highest Degree Conferred</u>
Murray State University	Murray, Kentucky	7,376	Masters, Specialist*
Bethel College	McKenzie, Tennessee (38)	536	Baccalaureate
Paducah Community College	Paducah, Kentucky (48)	2,298	Associate
University of Tennessee at Martin	Martin, Tennessee (51)	4,785	Masters
Hopkinsville Community College	Hopkinsville, Kentucky (57)	1,341	Associate

Murray State University

Established in 1922, Murray State University is one of eight tax-assisted, co-educational state universities in Kentucky, with an enrollment of approximately 7,400 students and a teaching faculty of about 350. Some 135 undergraduate programs of study, and a number of graduate offerings, are available in six academic colleges -- Business and Public Affairs, Education, Fine Arts and Communication, Humanistic Studies, Industry and Technology, and Science.

Known as a student-centered university where cost is affordable and emphasis is on academic excellence, Murray State is accredited by the Southern Association of Colleges and Schools. In addition, 34 of its academic programs have earned accreditations from 11 different national accrediting agencies.

The academic strength of Murray State is also reflected in an Honors Program; the Presidential Scholars Program, which provides full, four-year scholarships based on academic achievement and leadership to 12 freshmen each year; and a rapidly-growing program of international studies, which now offers exchange opportunities with universities on five other continents and in Central America.

(Continued)

* Joint doctoral degree programs are offered in cooperation with the University of Kentucky, Lexington. The degrees are issued by the University of Kentucky.

Through its Center for Continuing Education, Murray State continues to meet the needs of the adult or non-traditional students. A new bachelor of independent studies (BIS) degree program, the first of its kind in Kentucky, was introduced in 1986. Off-campus offerings, night and weekend classes and correspondence in television courses have also been expanded with the adult student in mind. The Small Business Development Center meets needs of businesses in the area with assistance in starting and strengthening new and existing businesses. Seminars and programs offered by the Center focus on improving managerial skills, enhancing supervisory skills and expanding computer skills.

Murray State was designated by the Kentucky Council on Higher Education in the spring of 1984 for both a Center of Excellence for Ecosystems Studies and an Endowed Chair for Applied Ecosystem Ecology. Ground was broken on the campus in November, 1987, for the \$12.5 million Martha Layne Collins Center for Industry and Technology to house several nationally-accredited engineering technology and related programs offered in the College of Industry and Technology.

Recognized as a cultural center for the region, Murray State University offers public opportunities to attend lectures, recitals, concerts, musical and theatrical productions, and art exhibits. The campus is the home of a National Public Radio-affiliated 100,000-watt FM station which has a listening audience in five states.

A major point of interest on the 232-acre main campus in residential Murray is the National Museum of the Boy Scouts of America, which is highlighted by a variety of participatory exhibits, historical scouting memorabilia and a collection of original oil paintings by Norman Rockwell. The oldest building on the campus houses the Wrather West Kentucky Museum, which reflects the cultural heritage of the geographic area surrounding Murray and Western Kentucky.

Vocational Training

The Bluegrass State Skills Corporation, an independent public corporation created and funded by the Kentucky General Assembly, provides programs of skills training to meet the needs of business and industry from entry level to advanced training, and from upgrading present employees to retraining experienced workers.

The Bluegrass State Skills Corporation is the primary source for skills training assistance for a new or existing company. The Corporation works in partnership with other employment and job training resources and programs, as well as Kentucky's economic development activities, to package a program customized to meet the specific needs of a company.

Vocational training is available at both the state vocational-technical schools and the area vocational education centers. The state vocational-technical schools are post-secondary institutions. The area vocational education centers are designed to supplement the curriculum of high school students. Both the state vocational-technical schools and the area vocational education centers offer evening courses to enable working adults to upgrade current job skills.

(Continued)

Arrangements can be made to provide training in the specific production skills required by an industrial plant. Instruction may be conducted either in the vocational school or in the industrial plant, depending upon the desired arrangement and the availability of special equipment.

Nearest State School

West Kentucky State Vocational-Technical School
Paducah, Kentucky, 48 miles distant

Business & Office	Auto Mechanics
Accounting/Management	Carpentry
Clerical	Civil & Highway Technology
Secretarial	Diesel Mechanics
Word Processing	Electricity
Health Occupations	Electronics
Dental Assisting	Graphic Arts
Medical Assisting	Masonry
Practical Nursing	Machine Shop
Radiologic Technology	Tailoring
Respiratory Therapy	Welding
Technician	Learning Resource Center
Surgical Technology	Special Vocational Programs
Personal Services Occupations	Vocational Improvement Program
Barbering	Public Service Occupations
Cosmetology	Business/Industry Security
Consumer & Home Economics	Training
Commercial Foods	CPR Training
Consumer & Family Life	Electrical Safety Training
Skills	Emergency Medical Care
Industrial Education	Fire Service Training
Air Conditioning	First Aid & Safety
Drafting	Rescue & Emergency Services
Auto Body Repair	Training

Nearest Area Education Center

Murray Area Vocational Education Center
Murray

Distributive Education	Industrial Education
Retailing	Appliance Repair
Health & Personal Services	Auto Body Repair
Occupations	Auto Mechanics
Practical Nursing	Carpentry

HEALTH

Local Medical Personnel

Physicians - 44

Dentists - 20

Hospitals

<u>General Hospital</u>	<u>Location</u>	<u>Beds</u>
Murray-Calloway County Hospital	Murray	178 acute care 40 long-term care

Medical staff - 35 active and 17 courtesy doctors, 86 registered nurses,
and 55 licensed practical nurses

Other Medical Facilities

Calloway County Health Department
Medical Arts Building (three-floor complex consisting of a pharmacy,
outpatient laboratory and office space for 23 physicians)

Ambulance Service

Name - Murray-Calloway County Hospital Ambulance Service
Staff - 10 emergency medical technicians

OTHER LOCAL FACILITIES

Communications

Telephone - South Central Bell Telephone Company
Telegraph - Western Union
Toll-Free number, 1-800-325-6000

Newspapers -
Daily except
Sunday and
circulation - The Murray Ledger and Times - 8,200
Weekly and
circulation - The Murray State News (college news-
paper) - 8,000

Radio - WNBS-AM, WAAW-FM, WKMS-FM,
WSJP-AM

Television -
Airwave reception
from - Paducah, Kentucky; Nashville and
Jackson, Tennessee; Cape Girardeau,
Missouri; Harrisburg, Illinois
Murray Cable Vision

Cable service -
Educational
Television - The Kentucky Educational Television
(K.E.T.) network is available
statewide

Library Services

Public library - Calloway County Public Library and Arts Annex
Size collection - 63,000 volumes
Circulation, 1986-87 - 149,671

University library - Harry Lee Waterfield Library
Size collection - Over 984,674 items including books, microforms,
documents and bound periodicals

Religious Institutions

Denominations -	AME Assembly of God Baptist Catholic Christian Christian Science Church of Christ Church of Jesus Christ of Latter Day Saints	Jehovah's Witnesses Lutheran Methodist Nazarene Pentecostal Presbyterian Seventh Day Adventist
Nearest Synagogues - Congregations -	Paducah, Kentucky, 48 miles northwest of Murray Temple Israel (reform)	

Financial Institutions

<u>Banks</u>	<u>Assets</u>	<u>Deposits</u>	<u>Statement Date</u>
Bank of Murray	\$184,443,381.00	\$164,425,423.00	6/30/87
Peoples Bank of Murray	128,784,703.00	113,628,504.00	12/31/86

<u>Savings and Loan Associations</u>	<u>Assets</u>	<u>Deposits</u>	<u>Statement Date</u>
Hopkinsville Federal Savings Bank	\$137,140,836.71	\$128,401,334.90	12/31/86
Republic Savings Bank	312,026,140.22	294,744,443.36	12/31/86

Hotels and Motels

Total number - 3
Total rooms - 187

RECREATION

Local

The city of Murray has a year-round supervised recreational program, with organized total-youth sports for children of the city and county. The city has a 100-acre park, a 20-acre park, two mini parks, three swimming pools (Olympic, training, & infant), tennis courts, nine ball fields, two soccer fields, six covered pavilions, picnic areas, bike and hiking trails, and playground equipment available for public use. A new golf course is available which is ranked as one of the finest in the country.

Recently, the Woodmen of the World Youth Camp, a private recreation club, purchased the Murray Tennis Center for utilization during their week-long camp. They hope to expand to a two-week program next year. This camp includes activities such as tennis, golf, and archery.

Among youth sports programs offered by the city of Murray are baseball, soccer, basketball, boxing, karate, football, and swimming. In addition, four soccer fields have been added.

Murray State University has 16 lighted tennis courts; six racquetball courts; a lighted recreation field for softball, soccer, etc.; three indoor basketball courts; weight rooms; an indoor jogging track; parcourse; outdoor track; gymnastic room; several open playing fields; bowling lanes; outdoor recreation equipment rentals; and an indoor swimming pool. The Murray State University Racers are perennial challengers for major honors in the eight men's and five women's NCAA Division I intercollegiate sports in the Ohio Valley Conference.

Murray State University's Miller Memorial Golf Course features a practice range, chipping green, putting green, a PGA Pro, and 18 memorable holes of golf at an affordable price. Murray State also provides instruction in tennis, golf, racquetball, bowling, swimming, aerobics, weight training, karate, canoeing, sailing, caving, backpacking, rappelling, and other activities.

Area (Within 50 miles)

Murray's location in the heart of Kentucky's Land of the Lakes region makes it an excellent recreation area. The city is located near two of the largest inland lakes in America - Kentucky Lake and Lake Barkley. The lakeland area offers numerous recreational facilities for water sports, fishing, boating and camping.

Located around this lakeland area are three of the state's finest resort parks - Kenlake State Resort Park, Lake Barkley State Resort Park, and Kentucky Dam Village State Resort Park.

Charm and serenity exemplify **Kenlake State Resort Park** which is located on Kentucky Lake, 15 miles northeast of Murray. The park offers hotel and cottage accommodations and an efficient camping site. Other facilities include a 9-hole golf course, pool and lake swimming, horseback riding, hiking trails, fishing, boating, picnicking, planned recreation, and one of the finest tennis complexes in the area.

Kentucky Dam Village State Resort Park, located 31 miles north of Murray near Gilbertsville, is one of the largest and most popular vacation resorts in Kentucky. A modern lodge with 46 rooms, 67 cottages, and a 225-site campground make up the accommodations. The park includes a 4,000-foot lighted airstrip. There is also a dining room overlooking Kentucky Lake, a coffee shop, a snack bar, two gift shops, a meeting room, an activities center, and a recreation room. Recreational activities to choose from include boating and fishing at the largest docking facility in the Kentucky parks system, golf at the 18-hole Village Green Course, fishing, hiking, horseback riding, picnicking, swimming at the lodge pool or off the sand beach, and tennis.

Lake Barkley State Resort Park, 42 miles northeast of Murray near Cadiz, is located on an embayment of Lake Barkley. The magnificent lodge includes 130 rooms, five suites, 13 cottages, a dining room, a coffee shop, a gift shop, two meeting rooms, and a recreation room. An activities center with a capacity for 1,000, a complete fitness center, and an 80-site campground are located near the lodge. A lodge pool, a beach and a bathhouse, an 18-hole golf course, a pro shop, tennis courts, a riding stable, a trapshooting range, a basketball court, hiking trails, playgrounds, and a picnic area round out the recreational facilities. The marina near the lodge has everything for the "boat lover": covered and open slips, a launching ramp, and rentals for fishing boats, skiing boats, and pleasure ride pontoons. An airport is available also.

The Land Between the Lakes, located on a 170,000-acre wooded peninsula, is an outdoor recreational and conservational education center. The Golden Pond Visitors Center offers a multimedia theatre/planetarium and observatory. Camping, swimming, fishing, boating, hiking, a buffalo herd on a 250-acre range, an Environmental Education Center for school study groups, an educational farm and a central station with films and displays are among the attractions. Kentucky Lake and Lake Barkley are among the top fishing and water sport recreation areas in the southeastern United States. The Land Between the Lakes area is 20 miles northeast of Murray.

A Confederate cannon, a network of earthen trenches, and a massive chain and anchor give the feeling of being transported back to the Civil War. All of this and more can be discovered at **Columbus-Belmont Battlefield State Park** at Columbus, 50 miles northwest of Murray. Other attractions at the 156-acre park include a 38-site campground, a gift shop, a historical hiking trail, miniature golf, a picnic area, and a playground. A visit to the museum at the park, which is in a building that served as a Civil War infirmary, offers a display of Civil War relics and early Indian artifacts and an audiovisual slide program on the Battle of Belmont.

Paducah is located 48 miles northwest of Murray. As Kentucky's seventh largest city, Paducah provides many recreational opportunities. Points of interest include the Alben W. Barkley Monument, Barkley Museum, Chief Paduke Statue, and many other attractions.

COMMUNITY IMPROVEMENTS

Recent

The following manufacturing firms have recently expanded or have announced plans to expand: Murray Fabrics, Inc.; Murray Mold & Die; Briggs & Stratton Corporation; Ellis Popcorn Company, Inc.; Kenlake Foods; Ryan Milk Company; and Vanderbilt Chemical Corporation. These plant expansions represent a total investment of over \$4,000,000.

The Murray-Kentucky Lake area was recently chosen as the number one rated retirement community in the United States by Rand McNally in the book "Retirement Places Rated".

Murray was again chosen as a "Kentucky Certified City" in 1987. The award is based on achievement in the following categories: economic development, transportation, public affairs, utilities, health, commercial development, housing, education and recreation. The Certified Cities Program is sponsored by the Kentucky Chamber of Commerce.

A 22,000-square-foot addition to the Calloway County High School was recently completed. The improvements include: a new business and office complex; chemistry-physics labs and preparation areas; two computer labs; and other classrooms and restrooms. A 20,000-square-foot addition to the Calloway County Middle School was also recently completed. The improvement included construction of rooms necessary to bring sixth graders to the middle school. Total costs for the high school and middle school additions was \$1,650,000.

The Murray Independent School System constructed additional resource rooms at the Robertson Center at a cost of \$149,000. Murray Independent is currently developing a robotics program, secondary curriculum study, and implementing a process approach to teaching writing, K-12, across the curriculum.

Construction of a 51,200-square-foot industrial "Spec" building was recently completed at the Murray Industrial Park. Placement of all utilities have also been completed at the industrial park. The industrial access road is scheduled to be paved in 1988.

The National Hotel in downtown Murray has been completely renovated and converted into a housing unit for the elderly. Cost of the project was \$500,000.

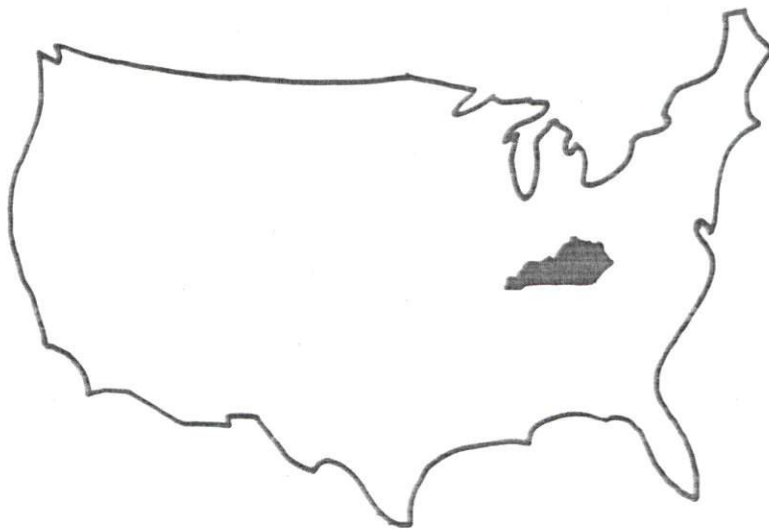
A new police station was recently constructed in Murray. Cost of the project was \$170,000.

A \$6 million improvement of U.S. 641 on the outskirts of Murray was recently completed.

Under Way

Ground was broken on the campus of Murray State University in November, 1987, for the \$12.5 million Martha Layne Collins Center for Industry and Technology to house several nationally-accredited engineering technology and related programs offered in the College of Industry and Technology.

Paschall Truck Lines is constructing a new truck terminal in Murray. The three-building complex is located on 17 acres of land adjacent to the Murray Industrial Park. Paschall Truck Lines, which is locally owned and operated, provides both interstate and intrastate service.



**Cabinet for Economic Development
Department of Business Development
Capital Plaza Tower
Frankfort, Kentucky 40601
(502) 564-7140**