

1988

Industrial Resources: Christian County - Hopkinsville

Kentucky Library Research Collections
Western Kentucky University, spcol@wku.edu

Follow this and additional works at: https://digitalcommons.wku.edu/christian_cty

 Part of the [Business Administration, Management, and Operations Commons](#), [Growth and Development Commons](#), and the [Infrastructure Commons](#)

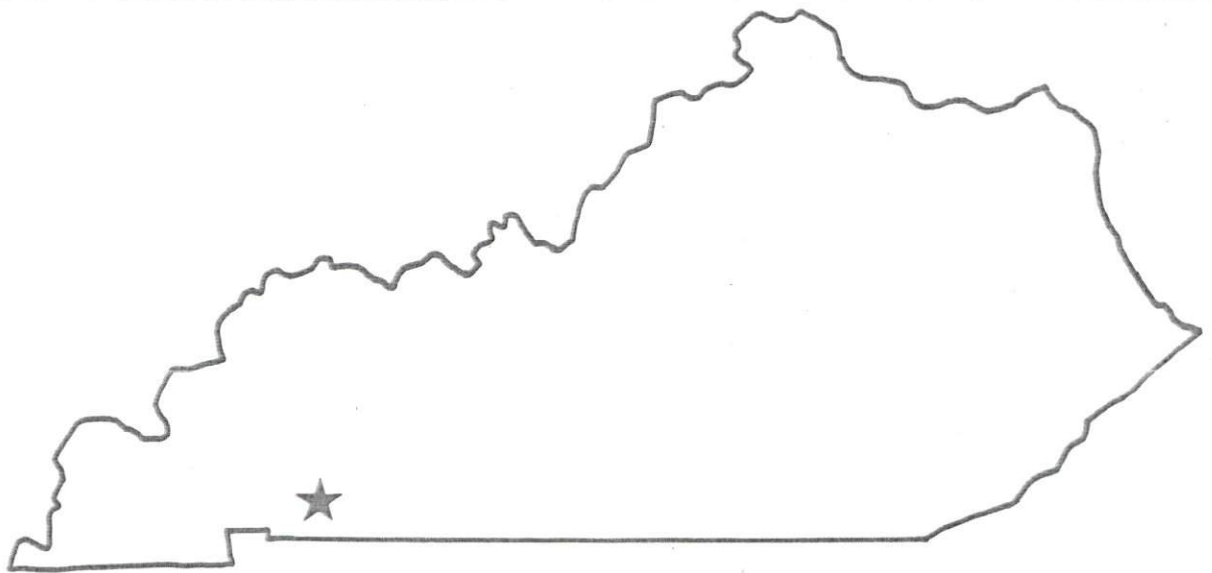
Recommended Citation

Kentucky Library Research Collections, "Industrial Resources: Christian County - Hopkinsville" (1988). *Christian County*. Paper 5.
https://digitalcommons.wku.edu/christian_cty/5

This Report is brought to you for free and open access by TopSCHOLAR®. It has been accepted for inclusion in Christian County by an authorized administrator of TopSCHOLAR®. For more information, please contact topscholar@wku.edu.

RESOURCES FOR ECONOMIC DEVELOPMENT

Hopkinsville - Christian County

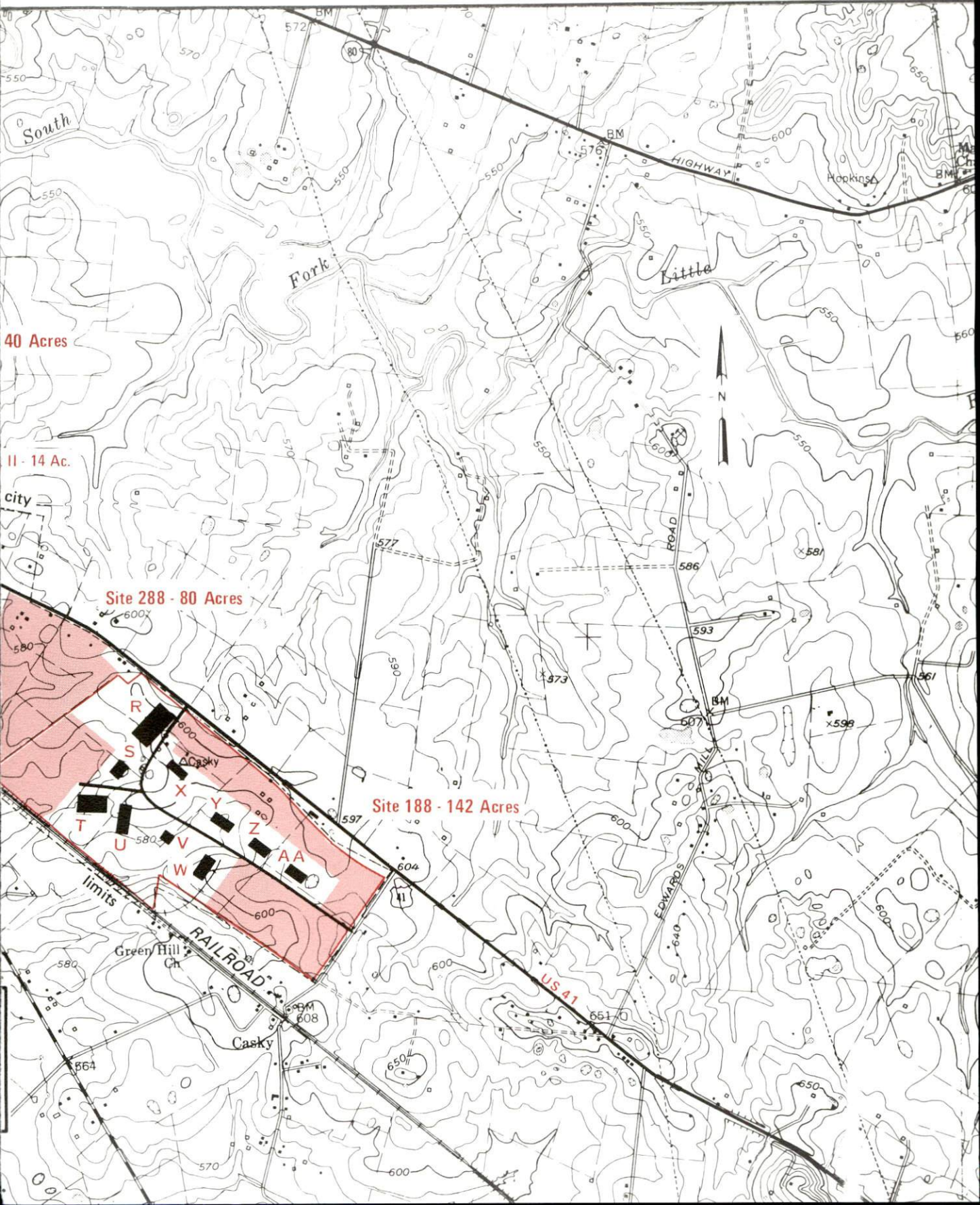


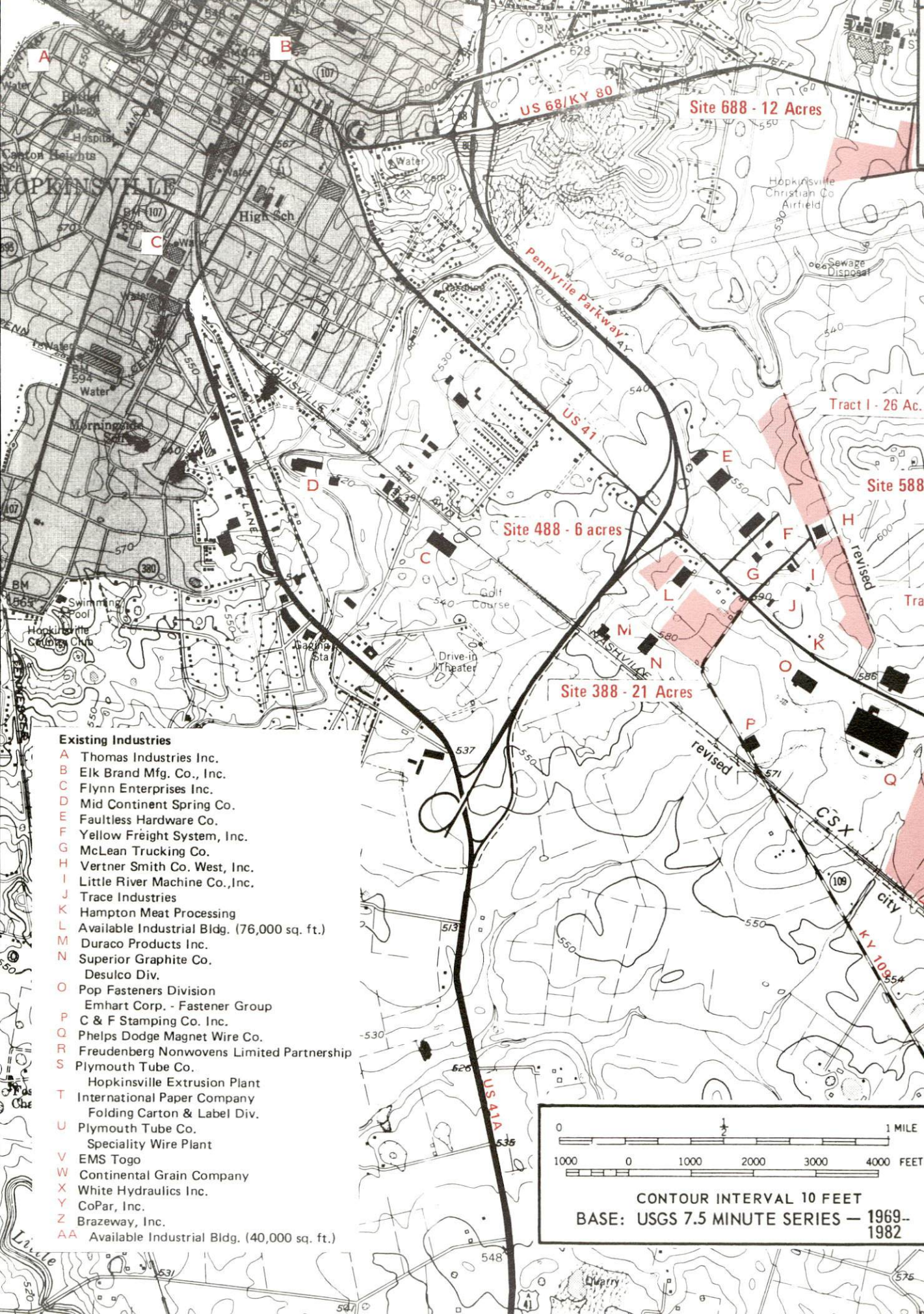
KENTUCKY

Open for Business

HOPKINSVILLE, KENTUCKY --- Index to Industrial Sites --- 1988

For more information contact the Cabinet for Economic Development, Department of Business Development,
Industrial Development & Marketing Division, Capital Plaza Tower, Frankfort, Kentucky 40601
(502-564-7140)





Site 688 - 12 Acres

Site 488 - 6 acres

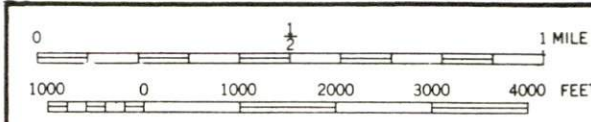
Site 388 - 21 Acres

Site 588

Tract I - 26 Ac.

Existing Industries

- A Thomas Industries Inc.
- B Elk Brand Mfg. Co., Inc.
- C Flynn Enterprises Inc.
- D Mid Continent Spring Co.
- E Faultless Hardware Co.
- F Yellow Freight System, Inc.
- G McLean Trucking Co.
- H Vertner Smith Co. West, Inc.
- I Little River Machine Co., Inc.
- J Trace Industries
- K Hampton Meat Processing
- L Available Industrial Bldg. (76,000 sq. ft.)
- M Duraco Products Inc.
- N Superior Graphite Co. Desulco Div.
- O Pop Fasteners Division Emhart Corp. - Fastener Group
- P C & F Stamping Co. Inc.
- Q Phelps Dodge Magnet Wire Co.
- R Freudenberg Nonwovens Limited Partnership
- S Plymouth Tube Co. Hopkinsville Extrusion Plant
- T International Paper Company Folding Carton & Label Div.
- U Plymouth Tube Co. Speciality Wire Plant
- V EMS Togo
- W Continental Grain Company
- X White Hydraulics Inc.
- Y CoPar, Inc.
- Z Brazeway, Inc.
- AA Available Industrial Bldg. (40,000 sq. ft.)



CONTOUR INTERVAL 10 FEET
 BASE: USGS 7.5 MINUTE SERIES — 1969-1982

RESOURCES FOR ECONOMIC DEVELOPMENT
HOPKINSVILLE/CHRISTIAN COUNTY, KENTUCKY

Prepared by
The Kentucky Department of Business Development
Division of Research and Planning
in cooperation with
The Hopkinsville-Christian County Chamber of Commerce
and
The City of Crofton

1988

Program manager - Andrew Dennis; research - Jerry Tolliver; clerical - Bobbi Graves; graphics - Tony Cecconi, Robert Owens, Pat Coleman; cartography - Site Evaluation Branch, Division of Industrial Development and Marketing. Cost of printing paid from state funds.

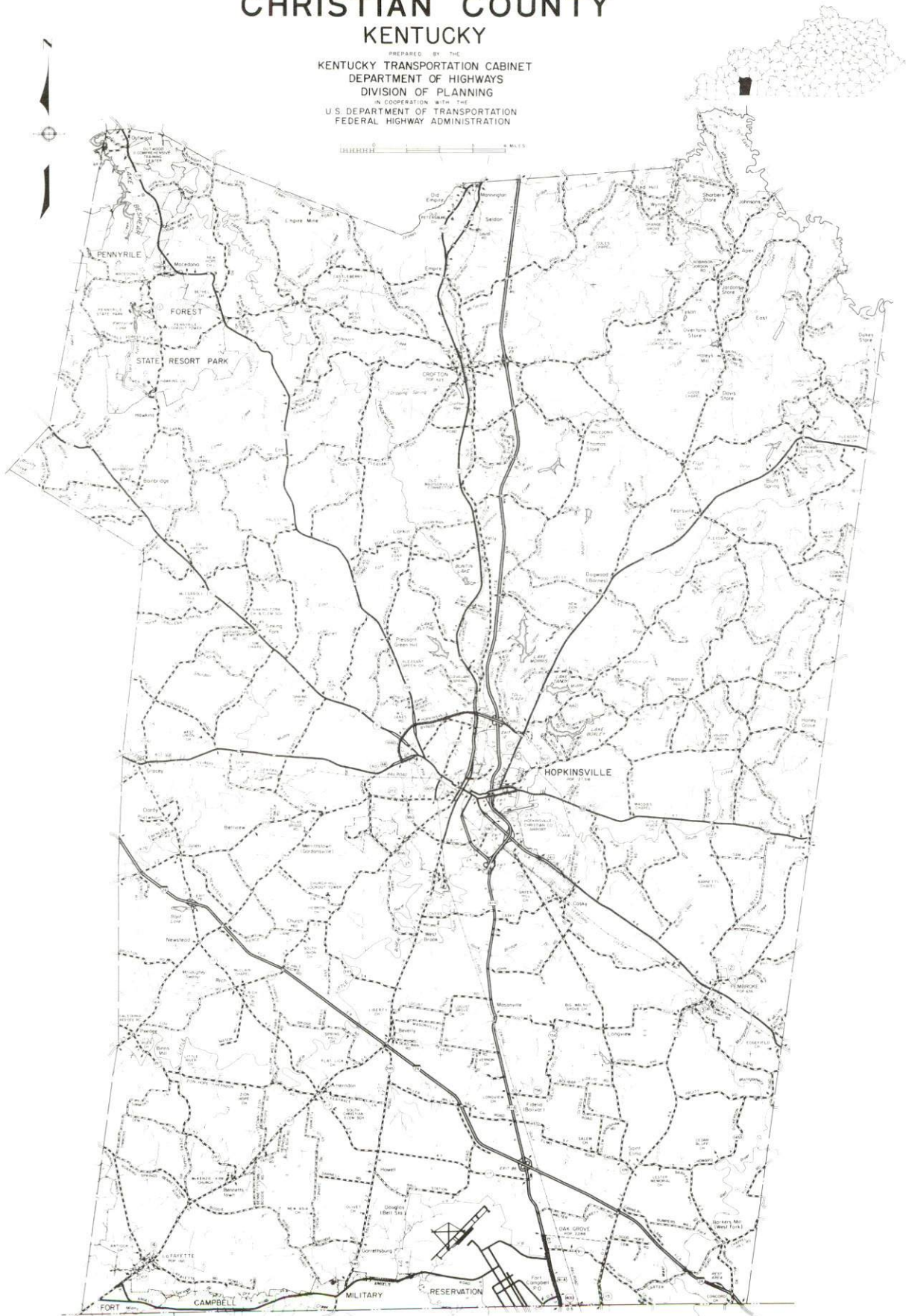
TABLE OF CONTENTS

<u>Chapter</u>	<u>Page</u>
INDUSTRIAL SITES	i
HOPKINSVILLE/CHRISTIAN COUNTY, KENTUCKY - A RESOURCE PROFILE	1
THE LABOR MARKET STATISTICS	2
Labor Market Area Map	2
Population	3
Population Projections	3
Unemployment Rates, 1980-1987 - Line Chart	4
Labor Force Characteristics of Residents, 1987	5
Selected Components of Nonagricultural Employment, by Place of Work, 1986	5
Estimated Male Labor Supply	6
Estimated Female Labor Supply	6
Average Placement Wages	7
Per Capita Personal Income	7
Average Weekly Wages of Workers Covered by Unemployment Insurance F.Y. 1986-87 - Bar Chart	8
Average Weekly Wages by Industry, by Place of Work, 1986	9
EXISTING INDUSTRY	10
Major Christian County Manufacturing Firms, Their Products and Employment	10
Labor Organizations in Manufacturing Firms	13
Selected Industrial Services	14
TRANSPORTATION	15
Rail	15
Highways	15
Truck Service	16
Air	17
Air Express Service	17
Water	17
POWER AND FUEL	19
Electricity	19
Natural Gas	20
Other Fuels	20
WATER AND SEWERAGE	22
Public Water Supply	22
Raw Water	23
Sewerage	24

<u>Chapter</u>	<u>Page</u>
CLIMATE	25
LOCAL GOVERNMENT	26
Structure	26
Planning and Zoning	26
Local Fees and Licenses	26
State and Local Property Taxes	27
Combined State and Local Rates Per \$100 Valuation, 1987	27
Safety	28
Police	28
Fire	28
Rescue Service	28
Refuse Collection and Disposal	28
EDUCATION	29
Public Schools	29
Nonpublic Schools	29
Area Colleges and Universities	30
Vocational Training	31
HEALTH	33
Local Medical Personnel	33
Hospitals	33
Other Medical Facilities	33
Ambulance Service	33
OTHER LOCAL FACILITIES	34
Communications	34
Library Services	34
Religious Institutions	35
Financial Institutions	35
Hotels and Motels	35
RECREATION	36
COMMUNITY IMPROVEMENTS	39

GENERAL HIGHWAY MAP
CHRISTIAN COUNTY
KENTUCKY

PREPARED BY THE
KENTUCKY TRANSPORTATION CABINET
DEPARTMENT OF HIGHWAYS
DIVISION OF PLANNING
IN COOPERATION WITH THE
U.S. DEPARTMENT OF TRANSPORTATION
FEDERAL HIGHWAY ADMINISTRATION



HOPKINSVILLE/CHRISTIAN COUNTY, KENTUCKY - A RESOURCE PROFILE

Hopkinsville, the county seat of Christian County, is situated in southwestern Kentucky, 73 miles northwest of Nashville, Tennessee; 170 miles southwest of Louisville, Kentucky; and 245 miles southeast of St. Louis, Missouri. Hopkinsville had a 1986 estimated population of 29,100 persons. Crofton, a small community in northern Christian County, had a 1986 population of 790.

Christian County, covering a land area of 722 square miles, is Kentucky's second-largest county. The county is situated in the Mississippian Plateaus area of southeastern Kentucky, and borders Tennessee on the south and the Western Coal Field Region on the north. Christian County had a 1986 estimated population of 63,264 persons.

The Economic Framework - The total number of Christian County residents employed in 1987 averaged 18,853. In 1986, manufacturing firms in the county reported 4,185 employees; wholesale and retail trade provided 4,729 jobs; 3,207 people were employed in service occupations; state and local government accounted for 2,570 employees; and contract construction firms provided 740 jobs.

Labor Supply - There is a current estimated labor supply of 10,679 men and 19,331 women available for industrial jobs in the labor market area. In addition, from 1988 through 1992, 10,891 young men and 10,212 young women in the area will become 18 years of age and potentially available for industrial jobs.

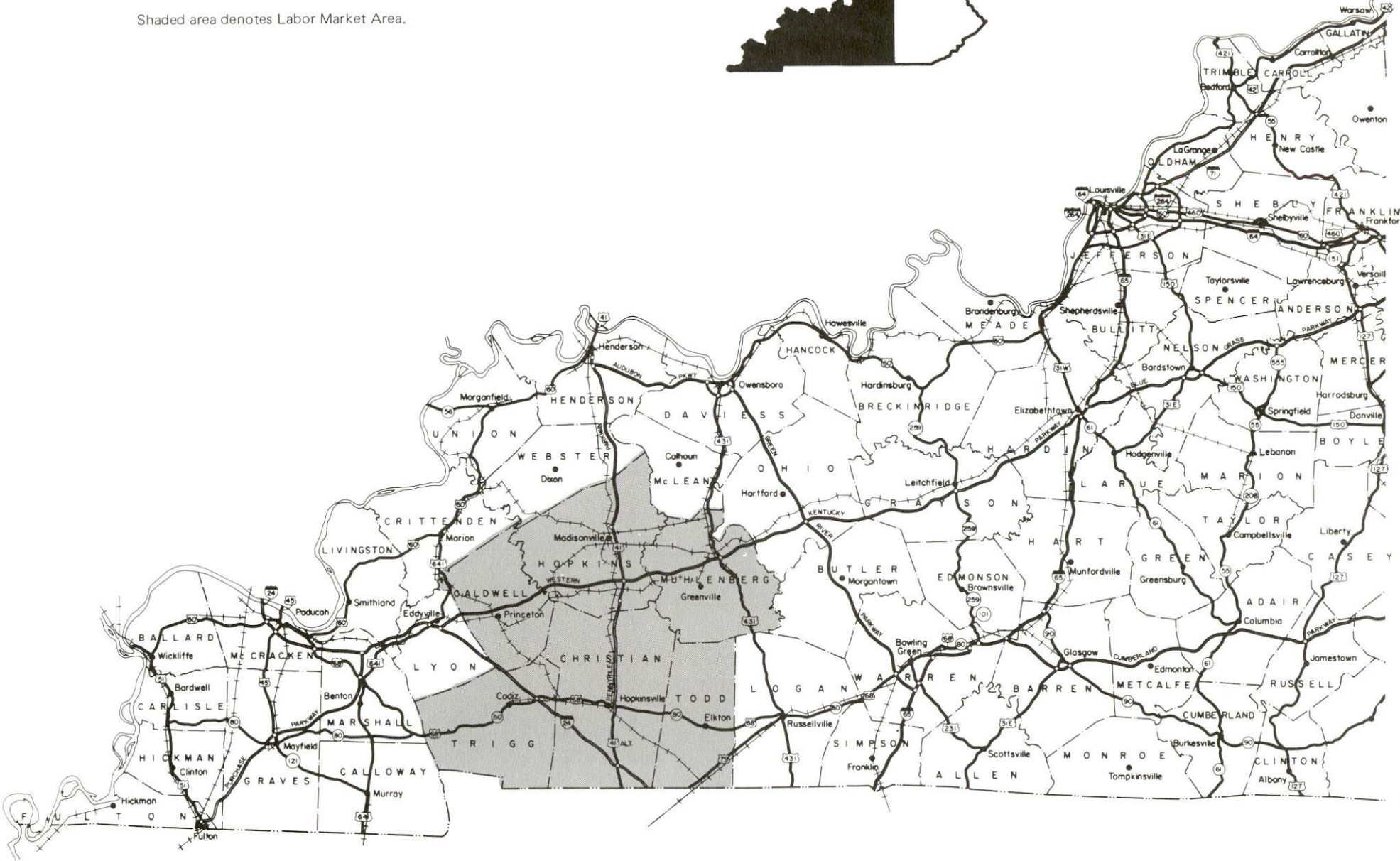
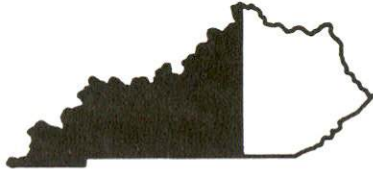
Transportation - CSX Transportation provides main line freight service to Hopkinsville and Crofton. Hopkinsville is the southern terminus of the Pennyriple Parkway - a multilane toll road. Other "AAA"-rated trucking highways serving Hopkinsville include U.S. Highways 41, 41A, and 68. Interstate Highway 24 passes through southern Christian County, and is accessible 13 miles from Hopkinsville. Crofton is served directly by U.S. Highway 41 and Kentucky Highways 800 and 1348. The Pennyriple Parkway is located one mile east of Crofton. The nearest scheduled commercial airline service is at Nashville Metropolitan Airport, 79 miles southeast of Hopkinsville, near Nashville Tennessee. The nearest navigable waterway is Lake Barkley.

Power and Fuel - The Hopkinsville Electric Plant Board provides electricity to Hopkinsville. Electric power is provided to Christian County by the Pennyriple RECC and the Kentucky Utilities Company. Natural gas service is provided by the Western Kentucky Gas Company.

Education - Primary and secondary education is provided by the Christian County School System. In addition, there are six nonpublic schools in Hopkinsville, as well the Hopkinsville Community College. There are three universities and two other community colleges within 72 miles of Hopkinsville. Vocational Education is available at the Madisonville State Vocational-Technical School in Madisonville, 34 miles north, and at the Christian County Area Vocational Education Center in Hopkinsville.

HOPKINSVILLE LABOR MARKET AREA
With
MAJOR HIGHWAYS & RAILROAD SYSTEM

Shaded area denotes Labor Market Area.



LABOR MARKET STATISTICS

The Hopkinsville/Christian County Labor Market Area includes Christian County and the adjoining Kentucky counties of Caldwell, Hopkins, Muhlenberg, Todd and Trigg. The Labor Market Area also includes the Tennessee counties of Montgomery and Stewart.

POPULATION

Area	1986*	1980	1970	Percent Nonwhite
				1980
Hopkinsville, KY	29,100	27,318	21,250	25.7
Crofton, KY	790	823	631	18.5
Clarksville-Hopkinsville Tenn-Ky MSA	154,364	150,220	118,945	-
Labor Market Area	276,062	272,028	224,590	-
Christian County, KY	63,264	66,878	56,224	28.9
Caldwell County, KY	13,295	13,473	13,179	6.4
Hopkins County, KY	46,590	46,174	38,167	7.2
Muhlenberg County, KY	31,869	32,238	27,537	5.3
Todd County, KY	10,899	11,874	10,823	12.4
Trigg County, KY	9,745	9,384	8,620	12.7
Montgomery County, TN	91,100	83,342	62,721	20.3
Stewart County, TN	9,300	8,665	7,319	1.9

* Population estimates.

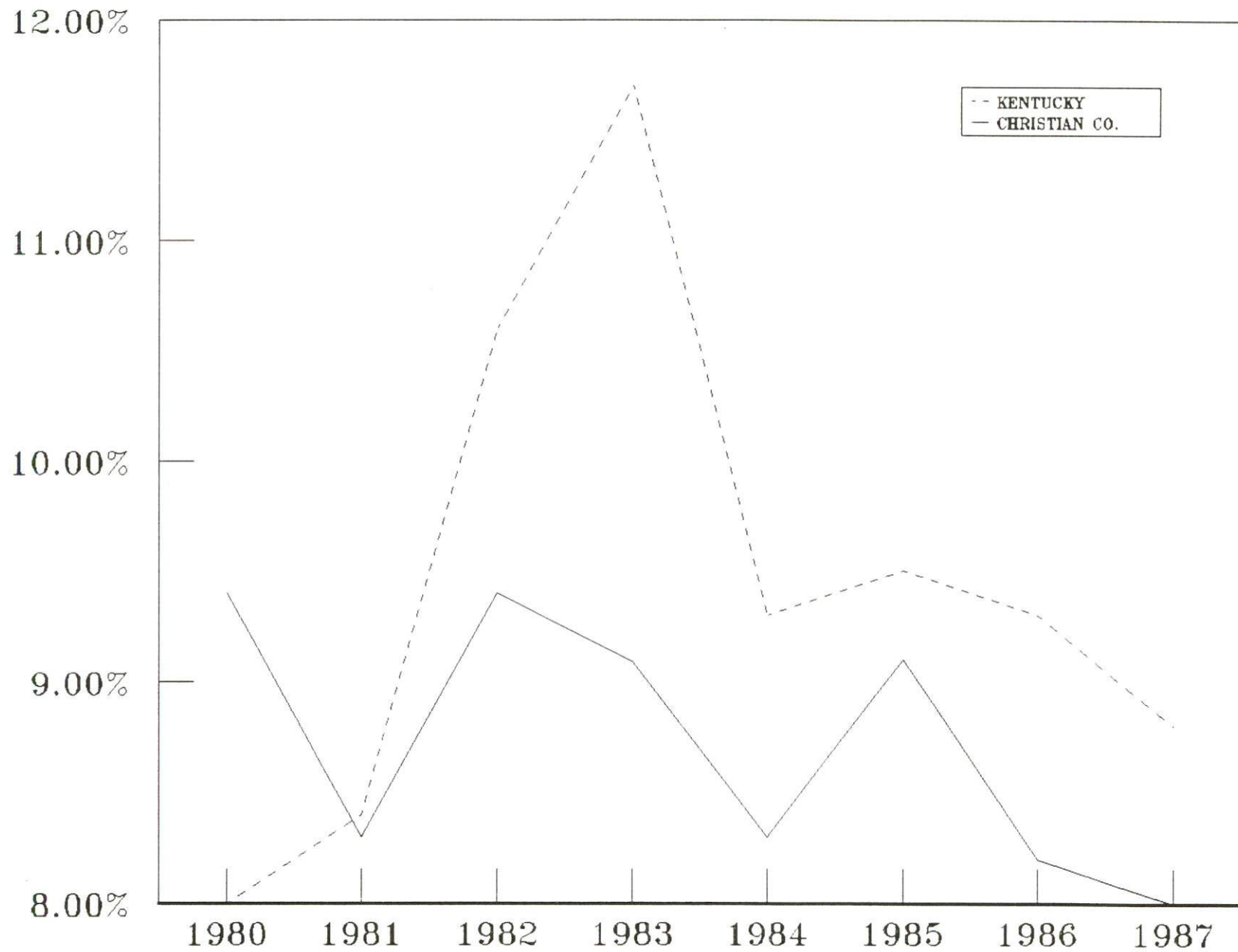
Sources: U.S. Department of Commerce, Bureau of the Census. University of Louisville, Urban Studies Center, Population Unit.

POPULATION PROJECTIONS

Area	1990	1995	2000	2010
Labor Market Area	295,636	312,134	332,221	-
Christian County, KY	68,819	72,251	76,142	84,851
Caldwell County, KY	13,325	13,328	13,255	13,100
Hopkins County, KY	48,401	49,995	51,317	53,335
Muhlenberg County, KY	33,035	33,989	34,740	35,865
Todd County, KY	11,193	11,450	11,654	11,968
Trigg County, KY	9,515	9,625	9,646	9,540
Montgomery County, TN	102,103	112,010	125,639	-
Stewart County, TN	9,245	9,486	9,828	-

Source: University of Louisville, Urban Studies Center, Population Research Unit, How Many Kentuckians: Population Forecasts, 1980-2020, the 1986 Edition, Spring 1986. Tennessee State Planning Office.

UNEMPLOYMENT RATES



LABOR FORCE CHARACTERISTICS OF RESIDENTS, 1987

	<u>Christian County</u>	<u>Labor Market Area*</u>
Civilian Labor Force	20,497	103,942
Employment	18,853	95,243
Unemployment	1,644	8,699
Rate of Unemployment (%)	8.0	8.4

* Includes six Kentucky counties and two Tennessee counties.

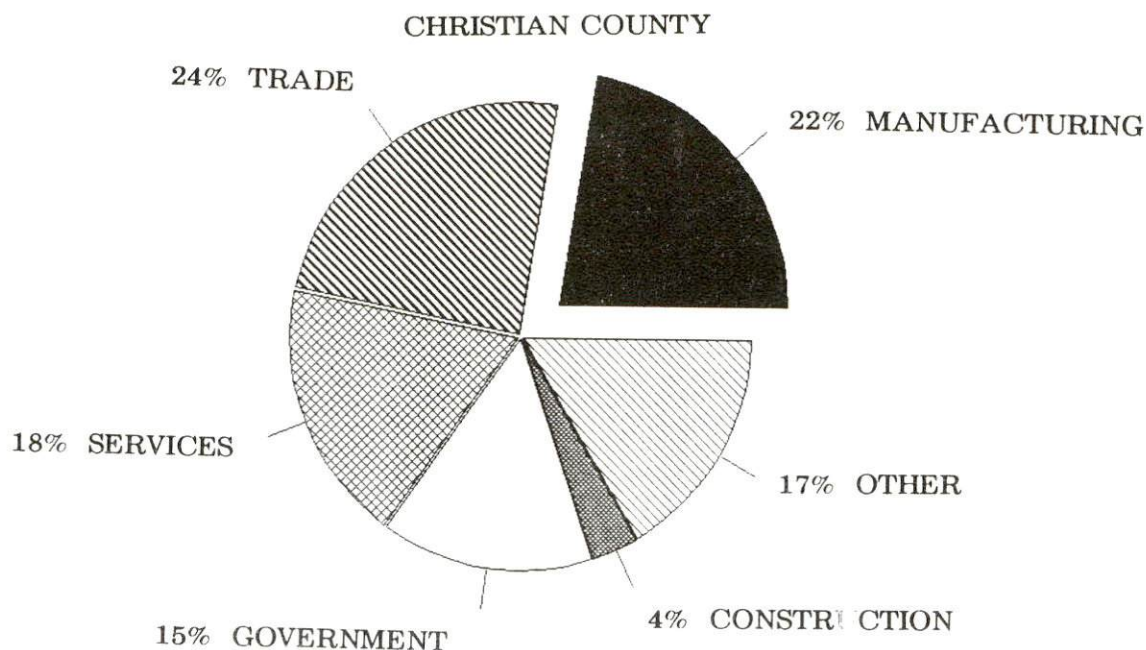
Source: Kentucky Cabinet for Human Resources, Kentucky Labor Force Estimates, Annual Averages, 1987. Tennessee Department of Employment Security, Research and Statistics Division, Labor Force Estimates Summary, Annual Average 1987.

**SELECTED COMPONENTS OF NONAGRICULTURAL EMPLOYMENT
BY PLACE OF WORK, 1986**

	<u>Christian County</u>	<u>Labor Market Area*</u>
All Industries (total)	16,915	47,274
Manufacturing	4,185	10,626
Wholesale & Retail Trade	4,729	11,544
Services	3,207	8,631
State/Local Government	2,570	7,112
Contract Construction	740	1,585

* Includes the six Kentucky counties only.

Note: Excludes domestic workers, railway workers, certain nonprofit corporations, majority of federal government workers, and self-employed workers.
Source: Kentucky Cabinet for Human Resources, Average Monthly Workers Covered by Kentucky Unemployment Insurance Law, 1986.



**ESTIMATED MALE LABOR SUPPLY
HOPKINSVILLE/CHRISTIAN COUNTY LABOR MARKET AREA**

Area	Current				Future
	Total Male	Unemployed	Under-employed	Not in Labor Force	Becoming 18 years of age 1988 thru 1992
Labor Market					
Area*	10,679	-	-	-	10,891
Christian	2,095	675	1,420	0	2,742
Caldwell	1,011	376	290	345	532
Hopkins	2,236	1,100	922	214	1,931
Muhlenberg	2,830	1,123	741	966	1,383
Todd	516	272	244	0	456
Trigg	469	248	166	55	351
Montgomery (TN)	1,236	-	-	-	3,201
Stewart (TN)	286	-	-	-	295

**ESTIMATED FEMALE LABOR SUPPLY
HOPKINSVILLE/CHRISTIAN COUNTY LABOR MARKET AREA**

Area	Current				Future
	Total Female	Unemployed	Under-employed	Not in Labor Force	Becoming 18 years of age 1988 thru 1992
Labor Market					
Area*	19,331	-	-	-	10,212
Christian	4,744	1,017	1,533	2,194	2,583
Caldwell	1,488	337	351	800	464
Hopkins	4,849	903	1,183	2,763	1,760
Muhlenberg	4,483	694	736	3,053	1,251
Todd	981	379	199	403	475
Trigg	768	219	238	311	344
Montgomery (TN)	1,835	-	-	-	3,092
Stewart (TN)	183	-	-	-	306

* Additional workers may be drawn from other nearby counties.

Note: Unemployed - persons unemployed and actively seeking work; Underemployed - persons employed but working only 14 to 26 weeks per year; Not in Labor Force - represents the number of persons who would enter the labor force if suitable employment were available (based on the assumption that persons in Kentucky would like to participate in the labor force in the same proportion that they do nationally).

Sources: Kentucky Cabinet for Human Resources, Kentucky Labor Supply Estimates by County, 1986. Tennessee Department of Employment Security, Research and Statistics Division, Tennessee Available Labor, 1986.

AVERAGE PLACEMENT WAGES

Christian County is served by the Hopkinsville local office of the Kentucky Department for Employment Services. The focus of the following data is on job placements made by the Hopkinsville local office and may therefore be used as an indicator of the wages which employers in the area pay new employees. During the twelve months which ended on June 30, 1987, the local employment office filled 1,434 job openings in various occupational categories. The average hourly wage for selected occupational categories were:

<u>OCCUPATIONAL CATEGORY</u>	<u>NUMBER OF PLACEMENTS</u>	<u>AVERAGE WAGE(\$)</u>
All Occupations	1,434	4.13
Clerical	570	3.62
Sales	55	3.93
Services (excluding domestic)	331	3.54
Agricultural, Fishery, Forestry, etc.	27	3.95
Processing	38	6.10
Machine Trades	73	6.79
Bench Work	68	4.78
Structural	65	5.09
Motor Freight/ Transportation	42	4.20
Packaging and Materials Handling	102	4.22
Other	2	3.35

The Hopkinsville local office also serves Caldwell, Lyon, Todd, and Trigg Counties. The above occupational categories are taken from the Dictionary of Occupational Titles published by the U.S. Department of Labor.

Source: Kentucky Cabinet for Human Resources, Department for Employment Services.

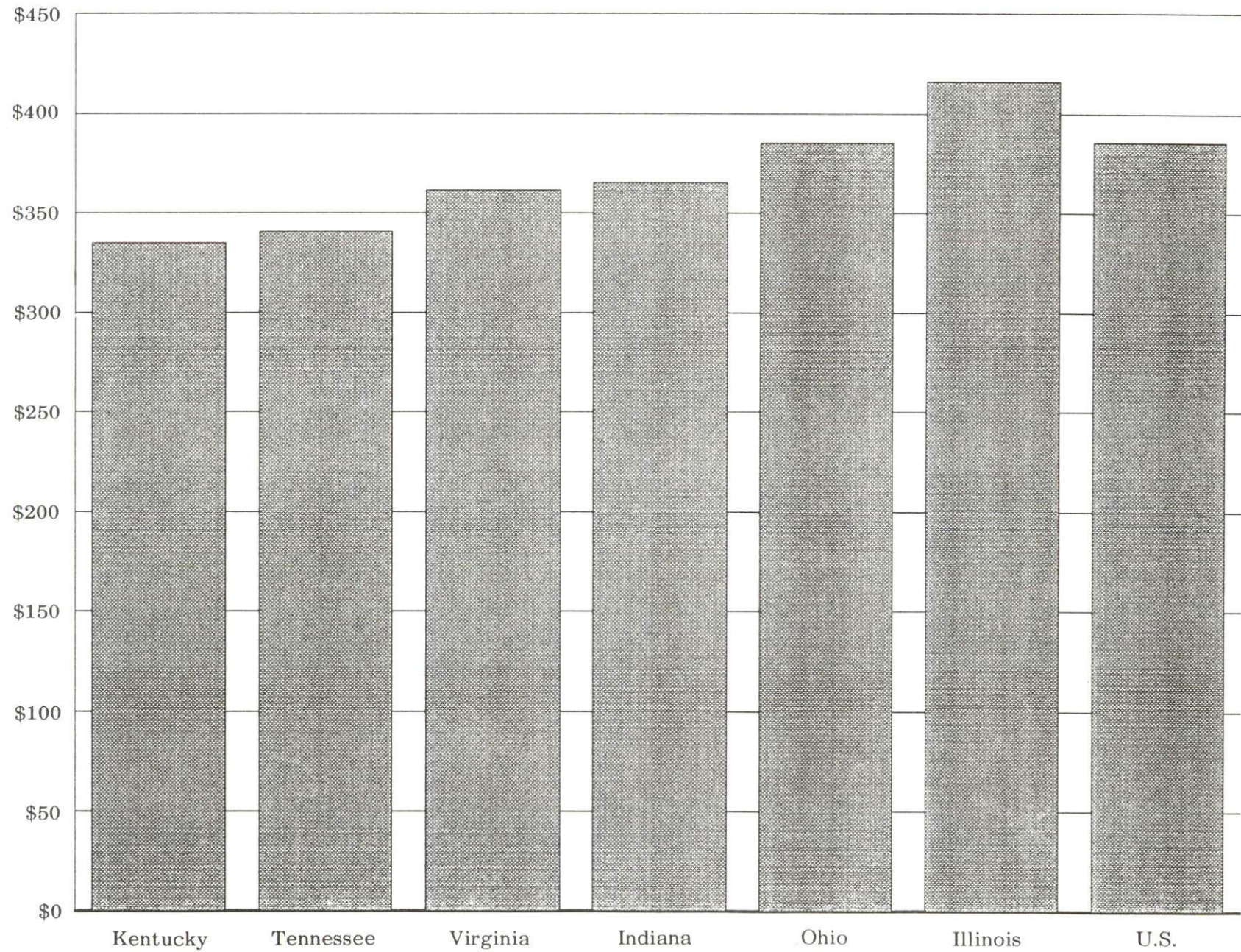
PER CAPITA PERSONAL INCOME

<u>Area</u>	<u>1982</u>	<u>1986</u>	<u>Percent Change</u>
Christian County	\$ 8,410	\$ 10,740	27.7
Labor Market Area Range*	\$7,591 - 11,224	\$9,109 - 13,368	-
Kentucky	9,277	11,342	22.3
U.S.	11,480	14,636	27.5

* Includes six Kentucky counties and two Tennessee counties.

Sources: Kentucky Economic Information System, April 1988.

AVERAGE WEEKLY WAGES OF WORKERS COVERED BY
UNEMPLOYMENT INSURANCE F. Y. 1986-87



AVERAGE WEEKLY WAGES BY INDUSTRY
BY PLACE OF WORK, 1986

	<u>Christian County</u>	<u>Caldwell County</u>	<u>Hopkins County</u>
All Industries	\$271.33	\$262.87	\$361.80
Mining & Quarrying	376.78	353.75	712.95
Contract Construction	324.72	219.65	290.57
Manufacturing	341.11	327.59	447.26
Transportation, Communications & Public Utilities	342.85	404.49	418.07
Wholesale & Retail Trade	205.44	191.45	235.32
Finance, Insurance & Real Estate	313.48	310.94	298.75
Services	210.99	226.97	265.19
State/Local Government	311.07	276.73	318.51
Other	196.61	173.53	177.94
	<u>Muhlenberg County</u>	<u>Todd County</u>	<u>Trigg County</u>
All Industries	\$391.69	\$234.81	\$257.53
Mining & Quarrying	788.90	*	*
Contract Construction	269.22	235.27	279.20
Manufacturing	262.39	259.41	310.11
Transportation, Communications & Public Utilities	477.54	344.93	348.47
Wholesale & Retail Trade	215.69	172.81	156.10
Finance, Insurance & Real Estate	286.12	234.11	286.20
Services	232.71	126.44	182.59
State/Local Government	300.68	246.74	256.62
Other	250.56	255.20	155.30

* Not disclosed.

Note: The average weekly wage for each category includes the salaries and wages of all persons working for that type business. For example, the manufacturing category includes both production workers and administrative personnel. Excludes domestic workers, railway workers, certain nonprofit corporations, majority of federal government workers, and self-employed workers.

Source: Kentucky Cabinet for Human Resources, Average Weekly Wages of Workers Covered by Kentucky Unemployment Insurance Law, 1986.

EXISTING INDUSTRY

MAJOR CHRISTIAN COUNTY MANUFACTURING FIRMS, THEIR PRODUCTS AND EMPLOYMENT*

<u>Firm</u> (Establishment date)	<u>Product</u>	<u>1987</u> <u>Average Employment</u>	<u>Labor</u> <u>Unions</u>
Agri Chem, Inc. (1951)	Fertilizer, seeds, chemicals & feeds	34	
Blue Lake Block Company (1951)	Concrete block, precast concrete products	34	
C & F Stamping Company, Inc. (1982)	BMC injection molding, automotive stampings, plastic injection molding	500	
Concrete Mix Company (1967)	Concrete accessories, ready mixed concrete	23	
Copar, Inc. (1988)	Radiators	-	
Dixie Pavers, Inc. (1959)	Bituminous concrete paving	104	
Dunlap Sales, Inc. (1966)	Sewing products	105	Teamsters*
Duraco Products, Inc. (1982)	Custom injection molding	151	
Ebonite International, Inc. (1967)	Bowling balls, bags, gloves	202	Leather Workers**
Elk Brand Manufacturing Company, Inc. (1930)	Men's & boy's jeans, men's & boy's slacks & walking shorts, men's & boy's jackets	281	

(Continued)

<u>Firm</u> <u>(Establishment date)</u>	<u>Product</u>	<u>1987</u> <u>Average Employment</u>	<u>Labor</u> <u>Unions</u>
Emhart Corporation (1966)	Pop rivets	110	Machinists*
Faultless Hardware Corporation, a Babcock International Company (1970)	Plastics products, decorative furniture cabinet hardware	115	
Flynn Enterprises, Inc. (1976)	Men's & boy's jeans, girl's jeans	975	
Freudenberg Nonwovens Limited Partnership (1973)	Nonwoven textiles, industrial filtration products	103	
Hampton Meat Processing (1975)	Meat processing	25	
Hopkinsville Milling Company (1874)	Wheat flour, corn meal, grits	72	Retail/ Whole- sale**
Hopkinsville Stone Company (1930)	Bituminous concrete, ready mixed concrete, crushed & agricultural limestone	75	
International Paper Company, Folding & Label Divison (1982)	Cartons, folding	105	
Kentucky New Era, Inc. (1869)	Newspaper	83	

(Continued)

<u>Firm</u> <u>(Establishment date)</u>	<u>Product</u>	<u>1987</u> <u>Average Employment</u>	<u>Labor</u> <u>Unions</u>
Mid Continent Spring Company (1957)	Precision springs, compression torsion springs	170	
Pellon Kentucky Corporation (1974)	Non-woven textiles	120	
Pepsi Cola Bottling (1939)	Soft drinks	48	
Phelps Dodge Magnet Wire Company, Hopkinsville Plant (1965)	Copper magnet wire	472	Auto Workers**
Plymouth Tube Company, Hopkinsville Extrusion Plant (1978)	Extruded stainless steel shapes, extruded non- ferrous shapes	41	
Specialty Wire Plant, Pop Fastener Division, Emhart Corporation - Fastener Group (1965)	Fasteners	110	Machinists**
Smith and Proffit Machine & Engineering Company, Inc. (1963)	Automation & robotics, jigs, fixtures, tools, dies, special machinery	75	
Southwestern Tobacco Company, Inc. (1918)	Tobacco redrying	125	
Superior Graphite Company, Desulco Division (1976)	Desulfurized petroleum coke, granular synthetic graphite	56	

(Continued)

<u>Firm</u> <u>(Establishment date)</u>	<u>Product</u>	<u>1987</u> <u>Average Employment</u>	<u>Labor</u> <u>Unions</u>
Thomas Industries, Inc., Residential Lighting Division (1955)	Lighting fixtures	350	Electrical Workers, IBEW; Team- sters**
Marble Manufacturers Trace Industries (1980)	Wooden stools, tables & chairs	44	
U.S. Tobacco Company (1978)	Snuff, flour	84	
Continental Grain Company, White Hydraulics, Inc. (1983)	Hydraulic motors	111	

* Manufacturing firms with 20 or more employees.

** See Labor Organizations below.

Sources: Kentucky Department of Economic Development, 1988 Kentucky Directory of Manufacturers; Division of Research and Planning.

LABOR ORGANIZATIONS IN MANUFACTURING FIRMS

<u>Union</u>	<u>Representing workers at:</u>
International Association of Machinists and Aerospace Workers, AFL-CIO	Pop Fastener Division, Emhart Corporation - Fastener Group
International Brotherhood of Electrical Workers, AFL-CIO	Thomas Industries, Inc., Residential Lighting Division
International Brotherhood of Teamsters, Chauffeurs, Warehousemen and Helpers of America	Thomas Industries, Inc., Residential Lighting Division
International Leather Goods, Plastic and Novelty Workers International Union, United Automobile, Aerospace and Agricultural Implement Workers of America	Ebonite International, Inc.
Retail, Wholesale and Department Store Union, AFL-CIO	Phelps Dodge Magnet Wire Company, Hopkinsville Plant
	Hopkinsville Milling Company

SELECTED INDUSTRIAL SERVICES

<u>Types of Service</u>	<u>Location</u>	<u>Mileage from Hopkinsville</u>
Custom Data Processing	Bowling Green, Kentucky	65
Custom Plastics Producers	Hopkinsville, Kentucky	-
Electric Motor Repair	Hopkinsville, Kentucky	-
Grinding, Precision & Tool	Hopkinsville, Kentucky	-
Heat Treating Facilities	Nashville, Tennessee	73
Industrial Equipment & Supplies	Hopkinsville, Kentucky	-
Industrial Gases	Hopkinsville, Kentucky	-
Industrial Waste Removal	Russellville, Kentucky	36
	Dawson Springs, Kentucky	41
Machine Shops, Tool & Die	Hopkinsville, Kentucky	-
Metal Castings	McHenry, Kentucky	56
Metal Finishers	Hartford, Kentucky	69
	Nashville, Tennessee	73
Metal Service Centers	Hopkinsville, Kentucky	-
Millwrights	Hopkinsville, Kentucky	-
Public Warehouse Facilities	Hopkinsville, Kentucky	-

Sources: Kentucky Department of Economic Development, Kentucky Directory of Selected Industrial Services, 1987; Division of Research and Planning.

TRANSPORTATION

Rail

Line serving Hopkinsville & Crofton - CSX Transportation

Services - Main line - nearest CSX piggyback facilities are located at Nashville, Tennessee, 73 miles southwest of Hopkinsville, and at Evansville, Indiana, 81 mile north

For details on routing, schedules, rates, and services contact:

Manager
Industrial Development
CSX Transportation
908 West Broadway
P. O. Box 2157
Louisville, Kentucky 40201
(502) 587-7746

Highways

Hopkinsville

Interstate 24, a major east-west route, serves Christian County. Interstate 24 is accessible 13 miles south of Hopkinsville via U.S. 41A or 16 miles west of Hopkinsville via U.S. 68. Other major highways serving Hopkinsville are U.S. Highways 41, 41A and 68, all "AAA"-rated (80,000-pound gross load limit) trucking highways. Hopkinsville is the southern terminus of the Pennyriple Parkway, a multilane toll road. The Pennyriple Parkway serves Hopkinsville with four interchanges and extends north to connect with the Western Kentucky Parkway, 25 miles from Hopkinsville.

Crofton

Crofton is served directly by U.S. Highway 41, a "AAA"-rated (80,000-pound gross load limit) trucking highway, and Kentucky highways 800 and 1348. The Pennyriple Parkway, a multilane toll road, is located 1 mile east of Crofton. The Pennyriple Parkway connects with the Western Kentucky Parkway, a multilane toll road, 12 miles north of Crofton. Interstate 24, a major east-west route, is located 26 miles south of Crofton via U.S. 41 and U.S. 41A.

Truck Service (Christian County)

AAA Cooper Transportation*	Consolidated Freightways
A & H Truck Line, Inc.**	Corporation of Delaware**
A & R Freight System, Inc.**	Hayes, Marvin Lines, Inc.*
Advance Transportation Company**	Hohenwald Truck Lines, Inc.**
American Freight System, Inc.*	Jones Truck Lines, Inc.**
Averitt Express, Inc.**	Majors Transit, Inc.**
Bailey's Express, Inc.**	Manning Motor Express, Inc.**
Birmingham-Nashville Express, Inc.**	Middlewest Freightways, Inc.**
Bowman Transportation, Inc.**	Overnite Transportation Company**
Brown Transportation Corporation**	P-I-E Nationwide, Inc.**
Buske Lines, Inc.*	Roadway Express, Inc.**
CW Transport, Inc.**	TSC Express**
Carolina Freight Carriers Corporation**	Thompson, Steve Trucking, Inc.**
Central Transport, Inc.**	Thurston Motor Lines, Inc.**
	Yellow Freight System, Inc.**

* Interstate service only

** Interstate & intrastate service.

Source: American Motor Carrier Directory, Spring 1988.

HIGHWAY MILES AND TRUCK TRANSIT TIME IN DAYS FROM HOPKINSVILLE, KENTUCKY, TO SELECTED MARKET CENTERS

City	Highway Miles	Delivery		City	Highway Miles	Delivery	
		Time TL				Time TL	
Atlanta, GA	315	1		Los Angeles, CA	2,090	3-4	
Baltimore MD	749	2		Louisville, KY	170	1	
Birmingham, AL	269	1		Nashville, TN	73	1	
Chicago, IL	373	1		New Orleans, LA	590	2	
Cincinnati, OH	271	1		New York, NY	911	3	
Cleveland, OH	515	2		Pittsburgh, PA	551	2	
Detroit, MI	530	2		St. Louis, MO	245	1	
Knoxville, TN	250	1					

Note: Mileage computations are via the best interstate or primary highways, not necessarily the most direct route of travel.

Sources: Rand McNally Deluxe Motor Carriers' Road Atlas, 1987. Official Kentucky Mileage Map, 1980. Delivery time - Majors Transit, Inc., P. O. Box 9, Caneyville, Kentucky 42721.

Air

Local

Hopkinsville-Christian County Airport*

Location: 1 mile east of Hopkinsville

Runways: 1 paved

Length: 5,000 feet

Traffic

Control: Wind socks on northwest and northeast corners, unicom

Lighting: Sundown to sunrise

Services: 100LL octane and jet fuel; major and minor A & P repairs; tie-down, taxi and 20 T-hangars; charter; heated storage hangar; flight training; car rental

Navigation: SDF, localizer, radar, N8B

Air Freight

Service: Chartered air freight services must be arranged.

Nearest Scheduled Commercial Airline Service

Nashville Metropolitan Airport

Location: 6 miles southeast of Nashville, Tennessee;
79 miles southeast of Hopkinsville

Runways: 3 paved

Length: 8,500 feet; 7,700 feet; 4,300 feet

Traffic

Control: Control tower

Lighting: Beacon, runway

Services: American, Delta, Eastern, Pan Am, Piedmont, Northwest, TWA, United, USAir, Allegheny Commuter, Southwest, Comair, Braniff, American Eagle; fuel - 100LL, jet-A; tie-downs, hangars; major A & P repairs, major Avionics repairs; APU, charter, flight instruction, oxygen, plane rental, survival equipment, U.S. Customs; taxi, limousine, car rental, courtesy car, public transit; weather information; restaurants, snack bars, hotel, business center

Air Freight

Service: Air freight terminal

Air Express Service

Several major companies offer air express services in Kentucky. These companies provide a quick means of shipping small to medium-sized packages expeditiously.

Water

The nearest navigable waterway is Lake Barkley. The Port Authority of Lyon County operates a public riverport on Lake Barkley near Eddyville, Kentucky, 43 miles northwest of Hopkinsville. Lake Barkley connects with the Ohio River via the Cumberland River. The Tennessee-Tombigbee Waterway Corridor includes Christian County, Kentucky.

* Installation of new taxiway lighting, REILS, and relocation of the airport fencing is currently under way and will be completed by August 1988.

LYON COUNTY RIVERPORT

- Cumberland River Mile 43.6 (Lake Barkley) - 10 miles from canal connecting Barkley and Kentucky Lakes.
- Southeast of Eddyville, Kentucky, off State Highway 93
- Easy access to I-24, Western Kentucky Parkway, and U.S. 62
- River mileage to major markets: Pittsburgh-1,062, Cincinnati-591, St. Louis-264, Memphis-307, New Orleans-937, and Mobile-655
- Equipped with bulk facilities for handling grain, limestone and coal
- Grain terminal consists of truck dump conveying system with 15,000-bushel per hour capacity, two storage bins with 35,000-bushel capacity each, and grain dryer capable of handling 3,000 bushels per hour at 5% moisture removal
- Limestone facility consists of 30" belt conveyor with a capacity of 500 tons per hour, and dust collector system
- Coal loading facility operates from a five-acre storage area, possesses 48" belt conveyor with a capacity of 1,500 tons per hour
- 100-ton truck hopper for transloading bulk material from barge to truck
- 80-ton truck scales
- 50' x 100' concrete dock for offloading bulk materials and handling general cargo
- Crane service available
- Thirty-two acre public port tract with nine acres of ground storage
- 2,200 feet of waterfront footage
- Industrial tract, comprising 117 acres, immediately adjacent to the port
- Lyon County Industrial Park, with 147 acres of available industrial sites, located four miles from port; rail, electricity, water, and sewer on site - natural gas available
- Products transferred through the riverport include: grain, coal, sand, and fertilizer
- Tenants include: Peavey Company, Fredonia Valley Quarries, and the Dunbar and Sullivan Dredging Company
- Switching and fleeting services available

POWER AND FUEL

Electricity

Company serving the majority of Hopkinsville and a small portion of
Christian County - Electric Plant Board of the City of Hopkinsville,
Kentucky

Source of power - Tennessee Valley Authority

For industrial rates contact:

Hopkinsville Electric Plant Board
101 North Main Street
P. O. Box 544
Hopkinsville, Kentucky 42240
(502) 887-4210

Company serving a small portion of Hopkinsville and the majority of
Christian County - Pennyrile RECC

Source of power - Tennessee Valley Authority

For industrial rates contact:

South Kentucky Industrial Development
Association, Inc.
P. O. Box 726
Hopkinsville, Kentucky 42240
(502) 885-5392

and/or

Pennyrile RECC
2000 Harrison Street
P. O. Box 551
Hopkinsville, Kentucky 42240
(502) 886-25555

Company serving Crofton and a portion of northern Christian County -
Kentucky Utilities Company

Source of power - Kentucky Utilities Company

For industrial rates contact:

Industrial Development Department
Kentucky Utilities Company
One Quality Street
Lexington, Kentucky 40507
(606) 255-1461

Natural Gas

Company serving Hopkinsville - Western Kentucky Gas Company
Source of supply - Texas Gas Transmission Corporation
Size of transmission mains - 8-inch (supplier); 6, 8 and 10 inches
(distributor)
Distribution mains - 2 to 8 inches
Distribution pressure - 25 psi
Btu content - 1,000 per cubic foot
Specific gravity - .60
For rates and supplies contact:

Western Kentucky Gas Company
311 West 7th Street
Owensboro, Kentucky 42301
(502) 685-8078

Company serving Crofton - Western Kentucky Gas Company
Source of supply - Texas Gas Resources Corporation
Size of transmission mains - 8-inch (supplier); 10-inch (distributor)
Distribution mains - 2 and 4 inches
Distribution pressure - 25 psi
Btu content - 1,000 per cubic foot
Specific gravity - .60
For rates and supplies contact:

Western Kentucky Gas Company
311 West 7th Street
Owensboro, Kentucky 42301
(502) 685-8078

Other Fuels

Propane (Christian County)

Southern States Hopkinsville
Petroleum Cooperative
520 Wooldridge Road
Hopkinsville, Kentucky 42240

(Continued)

Fuel oils (Christian County)

Ashland Petroleum Company
West 15th Street
Hopkinsville, Kentucky 42240

Chevron USA, Inc.
118 South Clay Street
Hopkinsville, Kentucky 42240

Home Oil and Gas Company
Nashville Road
Hopkinsville, Kentucky 42240

Hopkinsville Oil Company
708 North Main Street
Hopkinsville, Kentucky 42240

J. B. Hyde Distributing Company
700 West 15th Street
Hopkinsville, Kentucky 42240

Key Oil Company
206 East 25th Street
Hopkinsville, Kentucky 42240

Southern States Hopkinsville
Petroleum Cooperative
520 Wooldridge Road
Hopkinsville, Kentucky 42240

Residual fuel oil - Arrangements must be made with the refinery.

Low sulphur content coal - Available in Kentucky.

WATER AND SEWERAGE

Public Water Supply

Company serving Hopkinsville - Sewerage & Water Works Commission*
101 North Main Street
P. O. Box 628
Hopkinsville, Kentucky 42240
(502) 887-4241

Source - North Fork of Little River
Treatment plant capacity - 8 million gallons per day
Average daily consumption - 4.4 million gallons
Peak daily consumption - 6.3 million gallons
Treatment processes - Rapid mix, coagulation, flocculation,
sedimentation, filtration, chlorination, fluoridation
Storage capacity - 6,850,000 gallons
Size lines - 2-16 inches
Water pressure - 60 to 100 psi

MONTHLY WATER RATES

First	3,000	cubic feet	\$1.32	per 100 cubic feet
Next	3,000	cubic feet	1.05	per 100 cubic feet
Next	3,000	cubic feet	.83	per 100 cubic feet
Next	3,000	cubic feet	.72	per 100 cubic feet
Next	3,000	cubic feet	.61	per 100 cubic feet
All over	15,000	cubic feet	.50	per 100 cubic feet

Meter Minimum Rate

5/8-inch	\$ 3.96	per month
3/4-inch	5.28	per month
1-inch	7.98	per month
1 1/2-inch	15.95	per month
2-inch	26.13	per month
3-inch	47.52	per month
4-inch	79.86	per month
6-inch	312.18	per month

Tap-on charge:

1-inch and smaller connection	\$ 400
1 1/2-inch connection	900
2-inch connection	1,200
3-inch connection	2,400
4-inch connection	2,800
6-inch connection	3,299

(Continued)

* The Sewerage and Water Works Commission recently completed a \$3 million water line extension project, which essentially looped the service area and added water pressure.

Through 2-inch connection	\$ 65.34 per year
Through 3-inch connection	94.38 per year
Through 4-inch connection	152.46 per year
Through 6-inch connection	275.88 per year
Through 8-inch connection	399.30 per year
Through 10-inch connection	609.84 per year
Through 12-inch connection	871.20 per year

Rates and charges not metered - Billed semi-annually in advance.

Company serving Crofton - Crofton Water and Sewer System*
P. O. Box 243
Crofton, Kentucky 42217
(502) 424-5111

Source - Reservoir
Treatment plant capacity - 300,000 gallons per day
Average daily consumption - 100,000 gallons
Peak daily consumption - 180,000 gallons
Treatment processes - Filtration, coagulation, chlorination, rapid mix, sedimentation, flocculation, fluoridation
Storage capacity - 150,000 gallons
Size lines - 3, 6, and 8 inches

MONTHLY WATER RATES

First	2,000 gallons	\$8.00 (Minimum)
Next	1,000 gallons	1.75 per M gallons
Next	3,000 gallons	1.50 per M gallons
Next	9,000 gallons	1.25 per M gallons
All over	15,000 gallons	1.00 per M gallons

Tap-on charge:

Inside City - \$150
Outside City - \$200

Raw Water

Surface water sources - Little River, Sinking Fork and Tradewater River
Average discharge - Little River near Cadiz, Kentucky - 345 cfs (42 years, USGS)
Expected ground water yield - Varies throughout the county from a high of 200-500 gpm to a low of 5 gpm or less. Along the Little River the yield is 50 to 200 gpm. The majority of the county falls in the 5 to 50 gpm range.

* An additional source of water supply to the city of Crofton is planned. Water lines will be constructed from Lake Manire to Crofton beginning the summer of 1988. Completion of the project is scheduled for late 1988.

Sewerage

Company serving Hopkinsville - Sewerage and Water Works Commission
101 North Main Street
P. O. Box 628
Hopkinsville, Kentucky 42240
(502) 887-4241

Design capacity - 5,840,000 gallons per day (2 plants)

Average daily flow - 2,645,000 gallons

Type of treatment - Primary and secondary

Treatment processes - Flow equalization, screening, grit removal, primary sedimentation, lagoon system, trickling filter, rotating biological contactors, secondary sedimentation, chlorination, anaerobic digester, sludge drying beds, filter press, tertiary filter

Treated effluent discharged into - North Fork of Little River

Size of sanitary mains - 4 to 48 inches

Monthly rates -

First	3,000 cubic feet	\$2.31 per 100 cubic feet
Next	3,000 cubic feet	1.98 per 100 cubic feet
Next	3,000 cubic feet	1.65 per 100 cubic feet
Next	3,000 cubic feet	1.43 per 100 cubic feet
Next	3,000 cubic feet	1.32 per 100 cubic feet
Over	15,000 cubic feet	1.21 per 100 cubic feet

Tap-on charge: None

Company serving Crofton - Crofton Water and Sewer System
P. O. Box 243
Crofton, Kentucky 42217
(502) 424-5111

Design capacity - 100,000 gallons per day

Average daily flow - 70,000 gallons

Type of treatment - Secondary

Treatment processes - Lagoon system, aerated lagoon, stabilization ponds, spray irrigation

Treated effluent discharged into - Snorton Branch

Size of sanitary mains - 6, 8, and 10 to 12 inches

Monthly rates -

First	1,500 gallons	\$8.55 (Minimum)
All over	1,500 gallons	1.80 per M gallons

Tap-on charge:

Inside City - \$150

Outside City - \$200

CLIMATE

Christian County

Temperature

Normal (30-year record)	59.10 degrees
Average annual 1986	60.30 degrees
Record highest, July 1952 (47-year record)	107.00 degrees
Record lowest, January 1985 (47-year record)	-17.00 degrees
Normal heating degree days (30-year record) (Heating degree day totals are the sums of negative departures of average daily temperatures from 65 degrees F.)	3,756

Precipitation

Normal (30-year record)	48.49 inches
Mean annual snowfall (30-year record)	3.00 inches
Total precipitation 1986	31.60 inches
Mean number days precipitation (.01 inch or more) (45-year record)	119.20
Mean number days thunderstorms (45-year record)	53.90

Prevailing winds (through 1963)

South

Relative Humidity (21-year record)

6 a.m.	79 percent
Midnight	84 percent
6 a.m.	58 percent
Noon	61 percent

Source: U.S. Department of Commerce, Environmental Science Services Administration, Climatological Data, 1986. Station of record: Nashville, Tennessee.

LOCAL GOVERNMENT

Structure

Hopkinsville is served by a mayor, 12 council members, and a city administrator. The mayor is elected to a four-year term and the council members serve two-year terms. Crofton is served by a mayor and six council members. The mayor is elected to a four-year term and the council members serve two-year terms.

Christian County is served by a county judge/executive and eight magistrates. The judge/executive is elected to a four-year term and the magistrates serve two-year terms.

Planning and Zoning

Joint agency - Hopkinsville-Christian County Planning Commission
Participating cities - Hopkinsville, Crofton, La Fayette, Oak Grove,
Pembroke

Zoning enforced - Within city of Hopkinsville

Subdivision regulations enforced - Within city of Hopkinsville and
unincorporated Christian County

Local codes enforced - Building

Mandatory state codes enforced - Kentucky Plumbing code, National
Electric Code, Kentucky Boiler Regulations and Standards, Kentucky
Building Code (modeled after BOCA code)

Local Fees and Licenses

The City of Hopkinsville levies an occupational license tax of 1 1/2% of gross wages, and a business license tax of .115% of gross receipts.

The City of Crofton levies a business license fee of \$65 annually, and a \$50 loading and unloading license fee annually.

A 3 percent tax is levied on utilities receipts for schools in Christian County. Tax is paid by all consumers of utilities as an add-on to the utilities bills. Exempted are receipts from utilities services that are resold and the receipts from the sale of energy or energy producing fuels that exceed 3 percent of the cost of production in manufacturing, processing, mining or refining.

State and Local Property Taxes

All property in Kentucky, except items exempted by the state constitution, is taxed by the state. Property which also may be taxed by local jurisdictions includes land and buildings, finished goods inventories, automobiles, trucks, office furniture and office equipment. Local taxing jurisdictions in Kentucky include counties, cities, and school districts.

All property in Kentucky is assessed at 100 percent of fair cash value.

COMBINED STATE AND LOCAL RATES PER \$100 VALUATION, 1987

	Site Inside City of Hopkinsville	Site Inside City of Crofton	Site Inside Unincorporated Christian County
Land and Buildings	\$0.7649	\$0.7479	\$0.4969
Manufacturing			
Machinery	0.150	0.150	0.150
Pollution Control			
Equipment	0.150	0.150	0.150
Inventories			
Raw materials	0.001	0.001	0.001
Goods in Process	0.001	0.001	0.001
Finished Goods	0.5453	0.5943	0.2943
Automobiles & Trucks	0.9762	1.0252	0.7272
Other Tangible			
Personal Property	0.9943	1.0433	0.7433
Intangibles (Accounts receivable*, money in hand, stock, notes, bonds)	0.250	0.250	0.250
Goods Stored in Public Warehouses in Transit Status	0.001	0.001	0.001
Private Leaseholds in Industrial Revenue Bond Financed Facilities	0.015	0.015	0.015

* Accounts receivable are taxed at 85 percent of face value, for an effective rate of \$0.2125 per \$100 valuation.

Safety

Police	Hopkinsville	Crofton	Christian County
Total staff	47	2	15 (Sheriff) 11 (County police)
Radio-patrol cars	24	1	5 (Sheriff) 3 (County Police)

Fire*

Insurance Services Office, Public Protection Classification	5	5	**
Full-time staff	60	-	-
Volunteers	-	16	195

Rescue Service

Rescue Service is provided by the Christian County Rescue Team.

Refuse Collection and Disposal

Refuse collection is provided to residents and businesses of Hopkinsville by the City of Hopkinsville. Crofton and Christian County are provided refuse collection by private contractors. Christian County residents may also deposit refuse at collection points maintained throughout the county. Pickup service is provided at these points three days per week with disposal at the sanitary landfill.

* Includes copyrighted material of ISO Commercial Risk Services, Inc., with its permission.

** Christian County (including the cities of Hopkinsville, La Fayette, Oak Grove and Pembroke) is served by 12 volunteer fire departments and one full-time municipal fire department. The insurance class ranges from 5 to 10.

EDUCATION

Public Schools

	Christian County*
Total Enrollment (May 1988)	8,992
Kindergarten	707
Elementary	4,281
Middle School	1,378
High School	2,558
Accreditation	Southern Association of Colleges and Schools
Pupil-Teacher Ratio (1985-86)	21-6
Percent High School Graduates to College (1985-86)	41
Expenditures Per Pupil (1985-86)	\$1,872.73

Nonpublic Schools

<u>School</u>	<u>Enrollment</u>	<u>Grades</u>
Fort Campbell	4,000	K-12
Crofton Amish Parochial	16	1-8
Life Tabernacle Christian	39	K-12
Pennyrile Christian	30	K-5
University Heights Academy	166	K-12

* A \$3.5 million middle school is currently under construction in the Christian County School System. The school is scheduled for completion the fall of 1988. Plans are currently under way to construct six new classrooms at two elementary schools in the Christian County School System. This \$700,000 project is scheduled for completion in late 1989.

Area Colleges and Universities

<u>Name</u>	<u>Location (Miles distant)</u>	<u>Enrollment (Fall, 1987)</u>	<u>Highest Degree Conferred</u>
Hopkinsville Community College	Hopkinsville, Kentucky	1,341	Associate
Austin Peay State University	Clarksville, Tennessee (27)	4,739	Masters
Madisonville Community College	Madisonville, Kentucky (34)	1,514	Associate
Murray State University	Murray, Kentucky (57)	7,376	Masters, Specialist*
Western Kentucky University	Bowling Green, Kentucky (65)	13,520	Masters, Specialist**
Henderson Community College	Henderson, Kentucky (71)	1,116	Associate

In addition, there are nine colleges and universities in Nashville, Tennessee, 73 miles from Hopkinsville.

* Joint doctoral degree programs are offered in cooperation with the University of Kentucky, Lexington. The degrees are issued by the University of Kentucky.

** Joint doctoral degree programs are offered in cooperation with the University of Kentucky, Lexington, and cooperative doctoral degree programs are offered with the University of Louisville. The degrees are issued by the University of Kentucky or the University of Louisville.

Hopkinsville Community College

The University of Kentucky's Hopkinsville Community College offers two years of transfer or college parallel courses; associate degrees in Business Technology (with options in banking, management, management information systems, and agri-business); Human Services Technology, Law Enforcement, Nursing, and Secretarial and Office Administration; and a variety of credit and noncredit courses. In addition, the college works with business and industry to provide job-related programs. These include pre-employment training, middle management training, and an industrial training institute. A continuing education program in statistical quality control was begun in 1985.

The community college conducts examinations for the certification of professional secretaries, General Education Development Tests (G.E.D.'s), and State Merit Examinations (for employment with state government) twice monthly, in addition to work with literacy programs. The College is fully accredited by the Southern Association of Colleges and Schools.

Vocational Training

The Bluegrass State Skills Corporation, an independent public corporation created and funded by the Kentucky General Assembly, provides programs of skills training to meet the needs of business and industry from entry level to advanced training, and from upgrading present employees to retraining experienced workers.

The Bluegrass State Skills Corporation is the primary source for skills training assistance for a new or existing company. The Corporation works in partnership with other employment and job training resources and programs, as well as Kentucky's economic development activities, to package a program customized to meet the specific needs of a company.

Vocational training is available at both the state vocational-technical schools and the area vocational education centers. The state vocational-technical schools are post-secondary institutions. The area vocational education centers are designed to supplement the curriculum of high school students. Both the state vocational-technical schools and the area vocational education centers offer evening courses to enable working adults to upgrade current job skills.

Arrangements can be made to provide training in the specific production skills required by an industrial plant. Instruction may be conducted either in the vocational school or in the industrial plant, depending upon the desired arrangement and the availability of special equipment.

(Continued)

Nearest State School

Madisonville State Vocational-Technical School
Madisonville, 34 miles north of Hopkinsville

Consumer & Home Economics
Consumer & Family Life
Skills
Industrial Education
Auto Body Repair
Auto Mechanics
Carpentry
Diesel Mechanics
Drafting (with CAD/CAM)
Electricity
Electronics
Machine Shop
Mine Maintenance Technology

Tool & Die Making
Welding
Learning Resource Center
Public Service Occupations
Business/Industry Security
Training
CPR Training
Electrical Safety Training
Emergency Medical Care
Fire Service Training
First Aid & Safety
Rescue & Emergency Services
Training

Nearest Area Education Center

Christian County Area Vocational Education Center
Hopkinsville

Business & Office
Secretarial
Industrial Education
Air Conditioning
Auto Body Repair
Auto Mechanics
Building Maintenance

Carpentry
Electricity
Machine Shop
Masonry
Welding
Special Vocation
Learning Resource Center

HEALTH

Local Medical Personnel

Physicians - 76

Dentists - 25

Hospitals

<u>General Hospital</u>	<u>Location</u>	<u>Beds</u>
Jeannie Stuart Medical Center	Hopkinsville, Kentucky	216
Regional Medical Center of Hopkins County	Madisonville, Kentucky, 42 miles north	401

Jeannie Stuart Medical Center

Medical staff - 63 physicians, 124 registered nurses, and 64 licensed practical nurses

Regional Medical Center of Hopkins County

Medical staff - 95 physicians, 250 registered nurses, 122 licensed practical nurses, and 95 aides

Other Medical Facilities

Christian County Health Department
Pennyroyal Regional Mental Health-Mental Retardation Center
Trover Clinic
Western State Hospital (psychiatric)

Ambulance Service

Name - Hopkinsville-Christian County Emergency Ambulance Service*
Staff - 16 full-time medical technicians and approximately 24 volunteers

* Ambulance stations are located in Hopkinsville, Crofton and Oak Grove

OTHER LOCAL FACILITIES

Communications

Telephone -	South Central Bell Telephone Company
Telegraph -	Western Union Toll-Free number, 1-800-325-6000
Newspapers -	The Kentucky New Era
Daily (except Sunday) and circulation -	16,000
Radio -	WHOP-AM/FM, WQKS-AM, WZZF-FM, WNKJ-FM
Television -	W43AG - Local low-power station
Airwave reception from -	Nashville, Tennessee (6 stations); Paducah and Bowling Green, Kentucky; Evansville, Indiana (4 stations)
Cable service -	Cen Com, 44 channels
Educational Television -	The Kentucky Educational Television (K.E.T.) network is available statewide

Library Services

Public library - Hopkinsville-Christian County Public Library
Size collection - 90,000 volumes
Circulation, 1986-87 - 170,000
College library - Hopkinsville Community College (open to the public)
Size collection - 43,542 volumes

Religious Institutions

Hopkinsville and Crofton

Denominations -	Apostolic Assembly of God Baptist Catholic Christian Christian Methodist Episcopal Christian Science Church of Christ Church of God Church of Nazarene	Episcopal Interdenominational Latter Day Saints Lutheran Methodist Nazarene Pentecostal Presbyterian Salvation Army Seventh Day Adventist United Methodist
Nearest synagogues - Congregations -	Nashville, Tennessee, 73 miles southeast Sherith Israel (orthodox) Ohabai Shalom (reform) West End Synagogue (conservative)	

Financial Institutions

<u>Banks</u>	<u>Assets</u>	<u>Deposits</u>	<u>Statement Date</u>
First City Bank and Trust Company*	\$444,642,527	\$347,314,259	12/30/87
Pennyrile Citizens Bank and Trust Company**	50,104,369	40,677,816	12/30/87
Sovran Bank	183,705,053	161,077,009	12/31/87

<u>Savings and Loan Associations</u>	<u>Assets</u>	<u>Deposits</u>	<u>Statement Date</u>
First Federal Savings and Loan Association of Hopkinsville	\$56,680,741	\$51,002,253	12/31/87
Hopkinsville Federal Savings Bank	138,780,375	129,254,148	12/31/87

Hotels and Motels

	Hopkinsville	Crofton
Total number -	14	1
Total rooms -	509	10

* Includes the Area Bancshares Corporation and its subsidiaries, the Owensboro National Bank and the First City Bank and Trust Company.

** Branch bank is also located in Crofton.

RECREATION

Local

Hopkinsville offers a variety of public recreation opportunities. Public facilities include ten parks, eight playgrounds, three swimming pools, fifteen tennis courts, eight baseball diamonds, three softball fields, a football field, two soccer fields, a nine-hole golf course (par-3), and a fishing lake. New public facilities include a senior citizen's walking course, a BMX track, an 18-hole miniature golf course, a nature fitness trail, an 18-hole golf course, and a fishing pond.

The Hopkinsville-Christian County Recreation Department employs a full-time director and staff. Supervised recreational programs include classes in tennis, swimming, arts and crafts, soccer, aerobics, water aerobics and special programs for the handicapped. Sports leagues include men's and women's softball, basketball and volleyball; co-ed softball and flag football; boys' and girls' softball; Little League and Babe Ruth League baseball; junior league basketball; pee wee football; and soccer. Special events coordinated by the department are: "Life. Be in it. Superday", Christmas Parade, Haunted House, Sports Blast, 911 Program, Little River Days Festival, Giant Christmas Card Contest, Halloween Costume Parade and Pumpkin Painting Contest, Giant Easter Egg Contest and "Life. Be in it. Open House".

The Western Kentucky State Fair is held at the Christian County Fairgrounds each summer. A horse show, horse races, tractor pulls, and performances by famous entertainers are featured. The fair is the third-largest in Kentucky.

The Pennyroyal Area Museum is in Hopkinsville. The museum houses exhibits of Civil War and Jefferson Davis memorabilia, Indian relics, and early pioneer displays.

Private recreational facilities include a golf and country club, swimming pools, bowling lanes, riding stables, five movie theatres, a roller skating rink, trap shooting facilities, and a racquetball and health club.

Several organizations in Hopkinsville hold periodic performances, programs or exhibits throughout the year. These groups include the Community Players, the Hopkinsville Art Guild, the Hopkinsville Madrigal Singers, the Oratorio Society, the Pennyroyal Players, the Pennyroyal Crafts Group, the Pennyroyal Youth Choral, Hopkinsville Community Concerts, and the Southern Kentucky Independent Theatre (S.K.I.T.).

Crofton offers a variety of recreational opportunities. The North Christian Lions Community Park offers a shelter, playground area, and a baseball/softball field.

Several events held in Crofton each year include a 4th of July Homecoming, PTO Fall Festival and a Freedom Day.

Area (Within 55 miles)

Jefferson Davis Monument State Shrine is located 10 miles east of Hopkinsville at Fairview. The shrine is at the site of the birthplace of Jefferson Davis, a former U.S. Senator, Secretary of War, and the only president of the Confederate States of America. The park contains a 351-foot obelisk with an elevator to the top for viewing, a museum, a gift shop, and a playground with picnic tables.

Pennyrile Forest State Resort Park near Dawson Springs is located 21 miles northwest of Hopkinsville. The 24-room lodge, 13 cottages, and 68 campsites nestled within the trees provide excellent accommodations. Other facilities and activities include a dining room, a gift shop, rental rowboats and pedal boats, a 9-hole golf course, miniature golf, hiking trails, horseback riding, picnicking, playgrounds, shuffleboard, swimming at the lodge pool and off a sand beach, and two tennis courts. Lake Beshear, only four miles from the lodge, sports good fishing.

Lake Barkley State Resort Park, 29 miles west of Hopkinsville near Cadiz, is located on an embayment of Lake Barkley. The magnificent lodge includes 130 rooms, five suites, 13 cottages, a dining room, a coffee shop, a gift shop, two meeting rooms, and a recreation room. An activities center with a capacity for 1,000, a complete fitness center, and an 80-site campground are located near the lodge. A lodge pool, a beach and a bathhouse, an 18-hole golf course, a pro shop, tennis courts, a riding stable, a trapshooting range, a basketball court, hiking trails, playgrounds, and a picnic area round out the recreational facilities. The marina near the lodge has everything for the "boat lover": covered and open slips, a launching ramp, and rentals for fishing boats, skiing boats, and pleasure ride pontoons. An airport, including a 4,800-foot lighted airstrip, is available.

The Land Between the Lakes, located on a 170,000-acre wooded peninsula, is an outdoor recreational and conservational education center. The Golden Pond Visitors Center offers a multimedia theatre/planetarium and observatory. Camping, swimming, fishing, boating, hiking, a buffalo herd on a 250-acre range, an Environmental Education Center for school study groups, an educational farm and a central station with films and displays are among the attractions. Kentucky Lake and Lake Barkley are among the top fishing and water sport recreation areas in the southeastern United States. The Land Between the Lakes area is approximately 35 miles from Hopkinsville.

Charm and serenity exemplify Kenlake State Resort Park which is located on Kentucky Lake, 45 miles west of Hopkinsville. The park offers hotel and cottage accommodations and an efficient camping site. Other facilities include a 9-hole golf course, pool and lake swimming, horseback riding, hiking trails, fishing, boating, picnicking, planned recreation, an activities room, and one of the finest tennis complexes in the area.

Kentucky Dam Village State Resort Park, located 53 miles northwest of Hopkinsville near Gilbertsville, is one of the largest and most popular vacation resorts in Kentucky. A modern lodge with 72 rooms, a small lodge with 14 rooms, 67 cottages, and a 221-site campground make up the accommodations. The park includes a 4,000-foot lighted airstrip. There is also a dining room overlooking Kentucky Lake, a coffee shop, a snack bar, two gift shops, a meeting room, an activities center, and a recreation room. Recreational activities to choose from include boating and fishing at the largest docking facility in the Kentucky parks system, golf at the 18-hole Village Green Course, fishing, hiking, horseback riding, picnicking, swimming at the lodge pool or off the sand beach, and tennis.

Lake Malone State Park, located in southern Muhlenberg County, 55 miles northeast of Hopkinsville, offers camping facilities, swimming, fishing, and boating on an 826-acre lake. Playground facilities and picnic shelters are located in a beautiful scenic cliff area. Located across from the entrance to the park is an inn featuring luxury rooms, a restaurant, a swimming lake, a beach, boating, fishing, tennis, and nature trails.

COMMUNITY IMPROVEMENTS

Recent

The following manufacturing firms have recently located or have announced plans to locate facilities in Hopkinsville: Brazeway, Incorporated; Co Par International; EMS/Togo; and Tomberlin Corporation. These new firms represent a total investment of over \$18.7 million and 500 new jobs for Hopkinsville.

The following manufacturing firms have recently expanded or have announced plans to expand their facilities in Hopkinsville: Duraco Products, Inc.; Ebonite International, Inc.; Freudenberg Nonwovens Limited Partnership; Hampton Meat Processing; Hopkinsville Milling Company, Inc.; International Paper Company; Phelps Dodge Magnet Wire; and White Hydraulics, Inc. These expansions represent an investment of over \$5 million and 90 new jobs.

The Hopkinsville Sewerage and Water Works Commission recently completed a \$3 million water line extension project, which essentially looped the service area and added water pressure.

Under Way

The Christian County School System is currently constructing a new \$3.5 million middle school. The school is scheduled for completion the fall of 1988.

Installation of new taxiway lighting, REILS, and relocation of the airport fencing is currently under way at the Hopkinsville-Christian County Airport. The project is scheduled for completion in August of 1988.

Planned

An additional source of water supply to the city of Crofton is planned. Water lines will be constructed from Lake Manire to Crofton beginning the summer of 1988. Completion of the project is scheduled for late 1988.

A southern bypass around the city of Hopkinsville is in the planning stage. The \$9 million, 6.1-mile project is expected to go out on bids the summer of 1988.

The rebuilding of U.S. 60-Kentucky 80 from Bowling Green to Interstate 24 at Cadiz is proposed for the near future.

A \$22,500 grant to be used for development of the proposed Trail of Tears Commemorative Park has been approved for the city of Hopkinsville. The money will be used for purchasing land and development of a canoe landing, nature trails and parking areas on the banks of the Little River.

Plans are currently under way to construct six new classrooms at two elementary schools in the Christian County School System. This \$700,000 project is scheduled for completion in late 1989.



**Cabinet for Economic Development
Department of Business Development
Capital Plaza Tower
Frankfort, Kentucky 40601
(502) 564-7140**