

1983

Industrial Resources: Fleming County - Flemingsburg

Kentucky Library Research Collections
Western Kentucky University, spcol@wku.edu

Follow this and additional works at: https://digitalcommons.wku.edu/fleming_cty

 Part of the [Business Administration, Management, and Operations Commons](#), [Growth and Development Commons](#), and the [Infrastructure Commons](#)

Recommended Citation

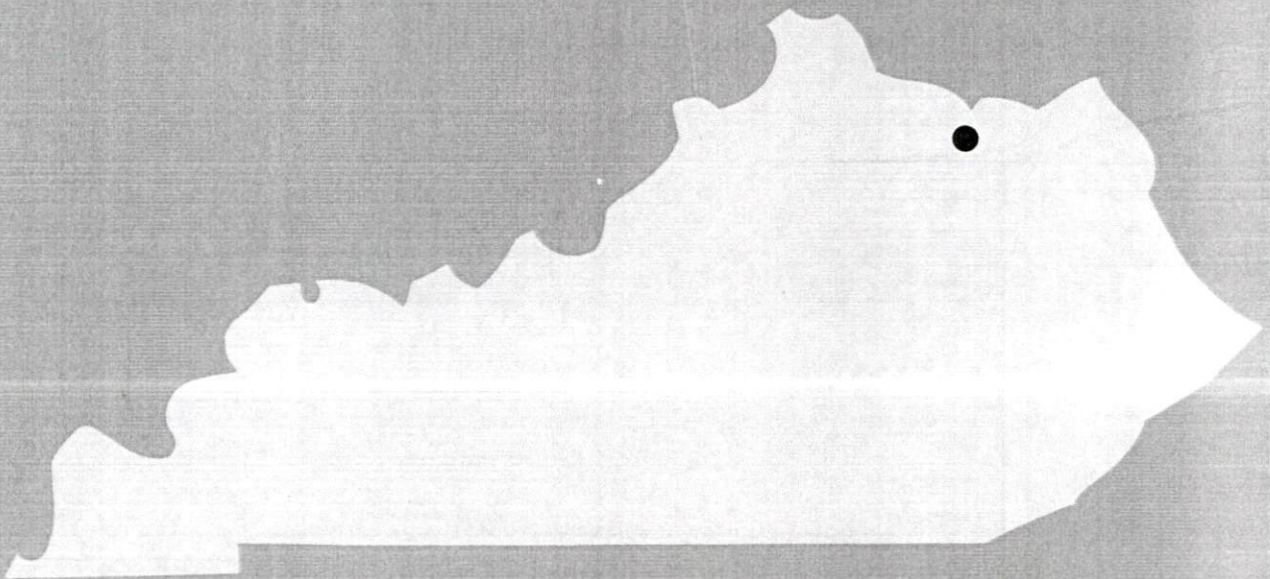
Kentucky Library Research Collections, "Industrial Resources: Fleming County - Flemingsburg" (1983). *Fleming County*. Paper 13. https://digitalcommons.wku.edu/fleming_cty/13

This Report is brought to you for free and open access by TopSCHOLAR®. It has been accepted for inclusion in Fleming County by an authorized administrator of TopSCHOLAR®. For more information, please contact topscholar@wku.edu.

ER
346 Fleming County

1983

A comprehensive
report on
Flemingsburg, Ky.



KENTUCKY & CO.
The state that's run like a business.

FLEMINGSBURG, KENTUCKY --- Site 183 --- 68 Acres

For more information contact the Department of Economic Development, Office of Business Development, Industrial Development Division, Capital Plaza Tower, Frankfort, Kentucky 40601 (502-564-7140).

Flemingsburg - Fleming County Industrial Park

LOCATION: Approximately 0.8 mile north of city limits

ZONING: None

HIGHWAY ACCESS: Park served by paved internal access road;

 KY 11 approximately 700 feet west via paved access road

RAILROAD: Not rail served

WATER: Flemingsburg Utilities System

 Size Line: 8-inch line serves the industrial park

NATURAL GAS: Flemingsburg Utilities System supplied by
 Columbia Gas of Kentucky, Inc.

 Size Line: 6-inch high pressure line approximately 600 feet
 west of site

ELECTRICITY: Kentucky Utilities Company and Fleming-
 Mason Rural Electric Cooperative Corporation

SEWERAGE: Flemingsburg Utilities System

 Size Line: 8-inch line serves the industrial park

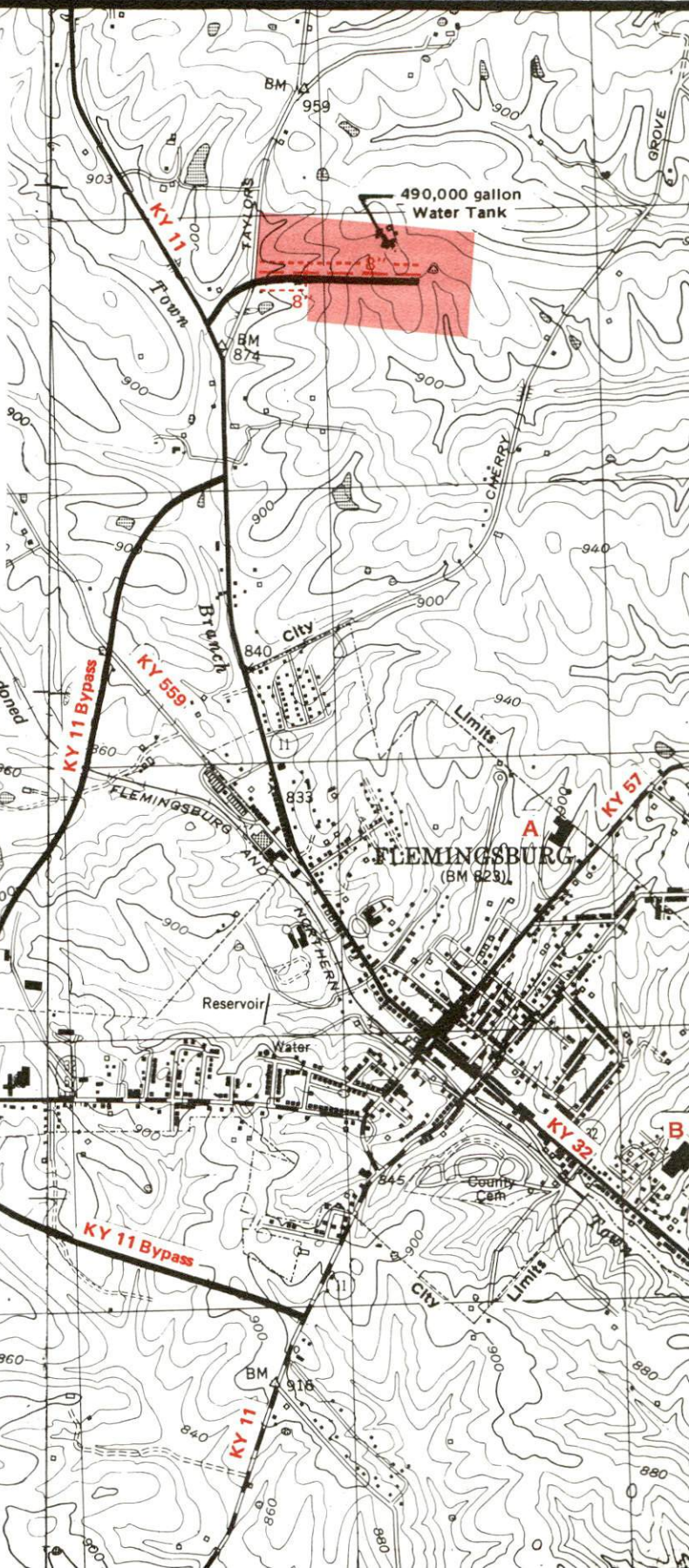
OWNERSHIP: Flemingsburg-Fleming County Joint Industrial
 Authority

SCALE: 1 inch = 2000 feet

CONTOUR INTERVAL: 20 feet

BASE: USGS 7.5 minute series - 1951-52

 Photorevised 1978-79



Existing Industries

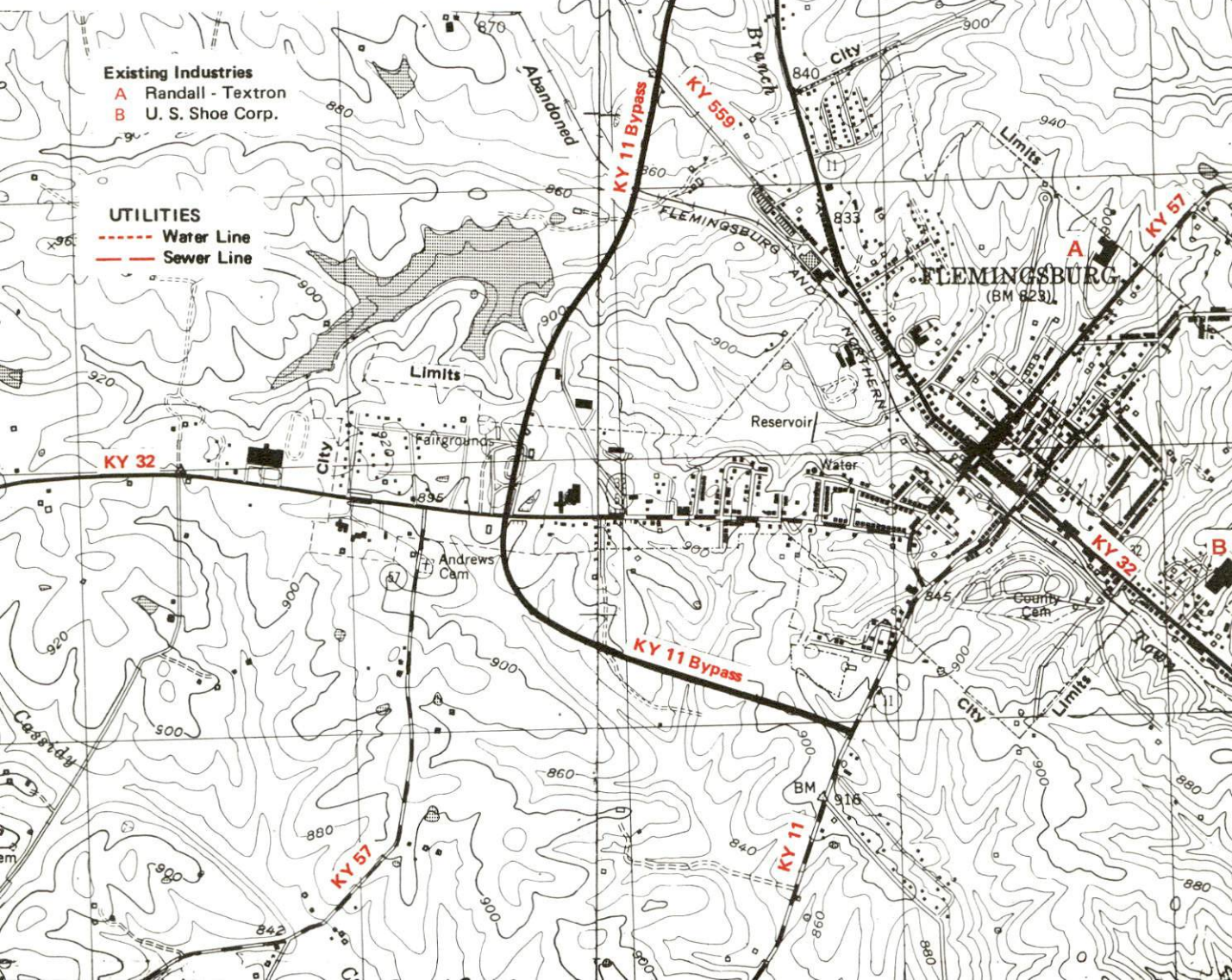
A Randall - Textron

B U. S. Shoe Corp.

UTILITIES

--- Water Line

--- Sewer Line



A COMPREHENSIVE REPORT ON
FLEMINGSBURG, KENTUCKY

Prepared by
The Kentucky Department of Economic Development
Division of Research and Planning
in cooperation with
The Fleming County Chamber of Commerce

1983

Program manager - Pamela Riley; research - James Thompson; clerical - Shirley Wood; graphics - Frank Ferrante, Tony Cecconi, Robert Owens; cartography - Site Evaluation Branch, Division of Industrial Development. Cost of printing paid from state funds.

TABLE OF CONTENTS

<u>Chapter</u>	<u>Page</u>
INDUSTRIAL SITES	i
FLEMINGSBURG, KENTUCKY - A RESOURCE PROFILE	1
THE LABOR MARKET AREA	3
Population	3
Labor Force Characteristics of Residents, 1982	3
Selected Components of Nonagricultural Employment, by Place of Work, 1982	4
Flemingsburg Manufacturing Firms, Their Products and Employment	5
Labor Organizations in Manufacturing Firms	5
Industrial Services	6
Estimated Male Labor Supply	7
Estimated Female Labor Supply	7
Average Weekly Wages by Industry, by Place of Work, 1982	8
Per Capita Personal Income	10
TRANSPORTATION	11
Rail	11
Highways	11
Truck Service	12
Air	13
Rental Services	13
Water	13
POWER AND FUEL	14
Electricity	14
Natural Gas	14
Other Fuels	15
WATER AND SEWERAGE	16
Public Water Supply	16
Raw Water	16
Sewerage	17
CLIMATE	18

<u>Chapter</u>	<u>Page</u>
LOCAL GOVERNMENT	19
City	19
County	19
Assessed Value of Property, 1983	19
Property Taxes	20
Combined State and Local Rates Per \$100 Valuation, 1982	20
Utilities Gross Receipts Tax for Schools	21
Planning and Zoning	21
Safety	21
Police	21
Fire	21
Rescue Service	21
Refuse Collection and Disposal	22
EDUCATION	23
Public Schools	23
Area Colleges and Universities	24
Vocational Schools	24
HEALTH	26
Local Medical Personnel	26
Hospitals	26
Other Medical Facilities	26
Ambulance Service	26
Public Health	26
OTHER LOCAL FACILITIES	27
Communications	27
Library Services	27
Religious Institutions	28
Financial Institutions	28
Hotels and Motels	28
Clubs and Organizations	28
RECREATION	29
COMMUNITY IMPROVEMENTS	30

1983 EDITION
GENERAL HIGHWAY MAP
FLEMING COUNTY
KENTUCKY

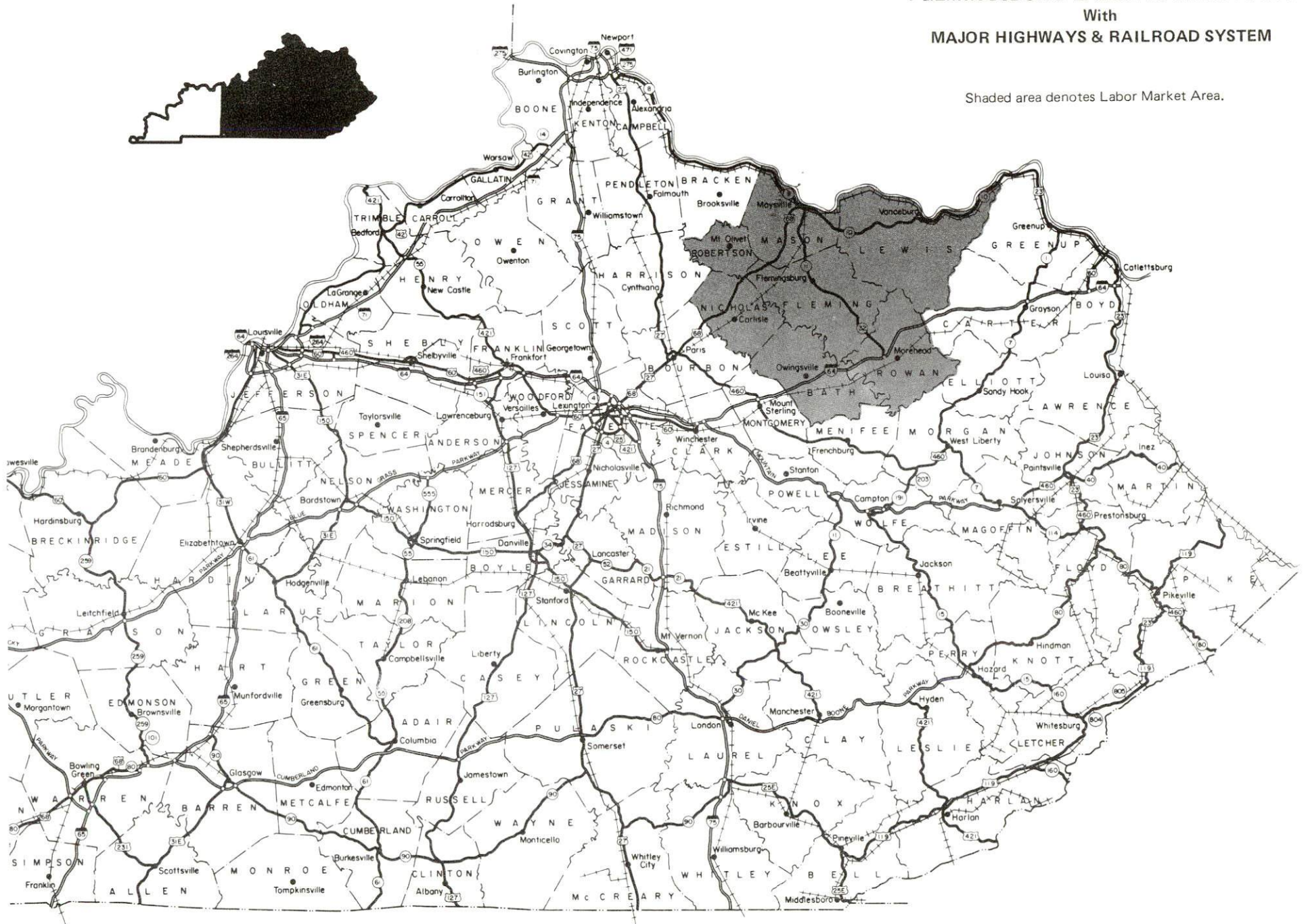
PREPARED BY THE
KENTUCKY TRANSPORTATION CABINET
DEPARTMENT OF HIGHWAYS
DIVISION OF PROJECT DEVELOPMENT
IN COOPERATION WITH THE
U.S. DEPARTMENT OF TRANSPORTATION
FEDERAL HIGHWAY ADMINISTRATION



FLEMINGSBURG LABOR MARKET AREA

With
MAJOR HIGHWAYS & RAILROAD SYSTEM

Shaded area denotes Labor Market Area.



FLEMINGSBURG, KENTUCKY - A RESOURCE PROFILE

Flemingsburg, the county seat of Fleming County, is located in the Outer Bluegrass Region in northeastern Kentucky. Flemingsburg is located 57 miles northeast of Lexington, Kentucky; 81 miles southeast of Cincinnati, Ohio; 130 miles east of Louisville, Kentucky; and 227 miles north of Knoxville, Tennessee. The city had a population of 2,835 in 1980.

Fleming County covers a total land area of 351 square miles. The eastern part of the county is within the Outer Bluegrass Region and western Fleming County extends into the Knobs Region. In 1980, Fleming County had a population of 12,323.

The Economic Framework

The total number of Fleming County residents employed in 1982 averaged 4,830, with nonagricultural jobs accounting for 3,780 workers. Manufacturing employers in the county reported 550 workers; state and local government 705; wholesale and retail trade 620; and 180 in the services industry. Manufacturing employment is greatest in the leather and leather products industry.

Per capita personal income in Fleming County in 1981 was \$6,110. Between 1977 and 1981, per capita income increased by 43 percent.

The Flemingsburg labor market area includes Fleming County and the six adjoining counties. The total number of residents of the labor market area employed in 1982 averaged 32,120, with nonagricultural jobs accounting for 27,820 workers. Manufacturing employers in the area reported 4,840 workers; state and local government 4,200; wholesale and retail trade 3,930; and 2,110 in the services industry.

Resources for Growth

1. Labor Supply - There is a current labor supply of 6,650 men and 4,640 women available for industrial jobs in the labor market area. In addition, from 1983 through 1987, 3,680 young men and 3,510 young women in the area will become 18 years of age and potentially available for work.

2. Transportation - The T.T.I. Railroad, Inc. provides rail service at Flemingsburg Junction, 5 miles northwest of Flemingsburg. Flemingsburg is served directly by Kentucky 11, 32, and 57, all "AAA" rated trucking highways. Access to Interstate 64 is 24 miles southeast of Flemingsburg via Kentucky 32, or 30 miles southwest via Kentucky 11. Three common carriers have the authority to serve Flemingsburg. The nearest commercial airport, Blue Grass Field near Lexington, is located 62 miles southwest of Flemingsburg. The Fleming-Mason Airport, 7 miles north of Flemingsburg, has a 3,900-foot paved runway to accommodate small aircraft.

3. Power and Fuel - Electric power is provided to Flemingsburg and parts of Fleming County by the Kentucky Utilities Company. Fleming County also is served electric power by the Fleming-Mason Rural Electric Cooperative Corporation, which is supplied by the East Kentucky Power Cooperative. Flemingsburg is provided natural gas service by the Flemingsburg Utilities System, which is supplied by Columbia Gas of Kentucky, Inc. Four distributors of propane and three distributors of distillate fuel oil serve Flemingsburg.

4. Education - Primary and secondary education is provided to Flemingsburg and Fleming County by the Fleming County School System.

Three universities, two senior colleges, two community colleges, and one technical institute are located within 60 miles of Flemingsburg.

The Central Kentucky State Vocational-Technical School in Lexington, 57 miles southwest, offers training in 20 courses. The Maysville Area Vocational Education Center in Maysville, 17 miles north, offers training in 9 courses.

THE LABOR MARKET AREA

The Flemingsburg Labor Market Area includes Fleming County and the adjoining Kentucky counties of Bath, Lewis, Mason, Nicholas, Robertson and Rowan.

POPULATION

<u>Area</u>	<u>1980</u>	<u>1970</u>	<u>Percent Nonwhite</u>
Flemingsburg	2,835	2,483	5.7
Labor Market Area	83,129	75,910	N/A
Fleming County	12,323	11,366	1.9
Bath County	10,025	9,235	3.3
Lewis County	14,545	12,355	0.3
Mason County	17,760	17,273	7.8
Nicholas County	7,157	6,508	1.9
Robertson County	2,270	2,163	0.4
Rowan County	19,049	17,010	2.1

Note: The 1980 counts of population by race are provisional.

Sources: U. S. Department of Commerce, Bureau of the Census, 1980 Census of Population and Housing, March 1981; 1980 Census of Population, Number of Inhabitants. Population Research Unit, Urban Studies Center, University of Louisville, Kentucky Demographics: The 1980 Census of Kentucky, Characteristics of Population, Households, Housing, January 1982.

LABOR FORCE CHARACTERISTICS OF RESIDENTS, 1982

	<u>Fleming County</u>	<u>Labor Market Area</u>
Civilian Labor Force	5,455	36,600
Employment	4,830	32,121
Agricultural	1,050	4,300
Nonagricultural	3,780	27,821
Unemployment	625	4,479
Rate of Unemployment (%)	11.5	12.2

Source: Kentucky Cabinet for Human Resources, Kentucky Labor Force Estimates, Annual Averages, 1982.

SELECTED COMPONENTS OF NONAGRICULTURAL EMPLOYMENT,
BY PLACE OF WORK, 1982

	<u>Fleming County</u>	<u>Labor Market Area</u>
All Industries (total)	2,369	17,513
Manufacturing	552	4,837
Wholesale & Retail Trade	618	3,931
Services	184	2,109
State/Local Government	705	4,198
Contract Construction	68	635

Note: Excludes domestic workers, railway workers, certain nonprofit corporations, majority of federal government workers, and self-employed workers.

Source: Kentucky Cabinet for Human Resources, Average Monthly Workers Covered by Kentucky Unemployment Insurance Law, 1982.

FLEMINGSBURG MANUFACTURING FIRMS,
THEIR PRODUCTS AND EMPLOYMENT

Firm (Establishment date)	Product	Employment			Labor Unions
		Total	Male	Female	
Bob Bryant Machine Shop (1972)	Machine shop	5	4	1	
Colgans Ready Mix Concrete Company (1965)	Ready mix concrete	9	9	-	
Fleming Gazette (1880)	Newspaper, job printing	5	1	4	
The Fleming Shopper (1983)	Newspaper publishing, letterpress printing	4	1	3	
Flemingsburg Times Democrat (1867)	Newspaper, job printing	4	1	3	
Motor Sales & Service Shop (1981)	Machine shop	5	-	-	
Randall-Textron (1959)	Automotive and appliance trim	64	38	26	Teamsters*
U. S. Shoe Corporation (1962)	Ladies' shoes	450	102	330	

*See Labor Organizations below.

Source: Kentucky Department of Economic Development, Division of Research and Planning.

LABOR ORGANIZATIONS IN MANUFACTURING FIRMS

Union

Representing workers at:

International Brotherhood of
Teamsters, Chauffeurs,
Warehousemen and Helpers
of America

Randall-Textron

INDUSTRIAL SERVICES

<u>Types of Services</u>	<u>Location</u>	<u>Mileage from Flemingsburg</u>
Custom Plastics Producers	Mt. Sterling	32
	Winchester	45
Electric Motor Repair	Lexington	57
Grinding, Precision & Tool	Winchester	45
	Georgetown	56
Heat Treating Facilities	Georgetown	56
	Lexington	57
Industrial Equipment & Supplies	Lexington	57
Industrial Gases	Lexington	57
Industrial Waste Removal	Lexington	57
Machine Shops, Tool & Die	Flemingsburg	-
Metal Finishers	Cynthiana	40
	Winchester	45
	Lexington	57
Metal Service Centers	Lexington	57
Millwrights	Lexington	57

Sources: Kentucky Department of Economic Development, Kentucky Directory of Selected Industrial Services, 1983. Kentucky Department of Economic Development, Division of Research and Planning.

ESTIMATED MALE LABOR SUPPLY
FLEMINGSBURG LABOR MARKET AREA

Area	Current			Future	
	Total	Unemployed	Under- employed	Not in Labor Force	Becoming 18 years of age 1983 thru 1987
Labor Market					
Area*	6,650	2,484	2,337	1,829	3,680
Fleming	708	300	196	212	546
Bath	949	423	191	335	451
Lewis	1,387	431	298	658	788
Mason	851	526	325	0	767
Nicholas	650	140	97	413	296
Robertson	317	77	29	211	90
Rowan	1,788	587	1,201	0	742

*Additional workers may be drawn from other nearby counties.

Note: Unemployed - persons unemployed and actively seeking work; Underemployed - persons employed but working only 14 to 26 weeks per year. Not in Labor Force - represents the number of persons who would enter the labor force if suitable employment were available (based on the assumption that persons in Kentucky would like to participate in the labor force in the same proportion that they do nationally).

Sources: Kentucky Cabinet for Human Resources, Kentucky Labor Supply Estimates by Area Development District and County, 1981. Kentucky Department of Economic Development, Future Labor Supply Becoming 18 Years of Age, 1983 thru 1987.

ESTIMATED FEMALE LABOR SUPPLY
FLEMINGSBURG LABOR MARKET AREA

Area	Current			Future	
	Total	Unemployed	Under- employed	Not in Labor Force	Becoming 18 years of age 1983 thru 1987
Labor Market					
Area*	4,644	1,567	2,063	1,014	3,510
Fleming	659	241	179	239	551
Bath	510	173	195	142	407
Lewis	978	344	219	415	671
Mason	774	421	353	0	739
Nicholas	242	85	100	57	303
Robertson	291	63	67	161	104
Rowan	1,190	240	950	0	735

*Additional workers may be drawn from other nearby counties.

Note: Unemployed - persons unemployed and actively seeking work; Underemployed - persons employed but working only 14 to 26 weeks per year. Not in Labor Force - represents the number of persons who would enter the labor force if suitable employment were available (based on the assumption that persons in Kentucky would like to participate in the labor force in the same proportion that they do nationally).

Sources: Kentucky Cabinet for Human Resources, Kentucky Labor Supply Estimates by Area Development District and County, 1981. Kentucky Department of Economic Development, Future Labor Supply Becoming 18 Years of Age, 1983 thru 1987.

AVERAGE WEEKLY WAGES BY INDUSTRY,
BY PLACE OF WORK, 1982

	<u>Fleming County</u>	<u>Bath County</u>	<u>Lewis County</u>	<u>Mason County</u>
All Industries	\$208.83	\$207.12	\$182.75	\$264.33
Mining & Quarrying	*	0	0	*
Contract Construction	352.43	277.49	103.53	429.41
Manufacturing	192.21	140.19	168.75	304.87
Transportation, Communications & Public Utilities	337.07	411.15	202.78	479.38
Wholesale & Retail Trade	169.15	152.30	145.47	168.49
Finance, Insurance & Real Estate	228.04	201.96	229.22	231.24
Services	147.47	131.06	150.60	208.50
State/Local Government	235.93	229.08	227.86	249.67
Other	99.04	*	0	300.46

	<u>Nicholas County</u>	<u>Robertson County</u>	<u>Rowan County</u>
All Industries	\$211.58	\$207.87	\$243.94
Mining & Quarrying	0	0	*
Contract Construction	161.20	*	331.83
Manufacturing	*	0	225.59
Transportation, Communications & Public Utilities	*	*	349.31
Wholesale & Retail Trade	160.74	128.40	162.22
Finance, Insurance & Real Estate	263.51	*	299.91
Services	*	*	241.95
State/Local Government	207.49	206.31	282.77
Other	167.66	0	116.65

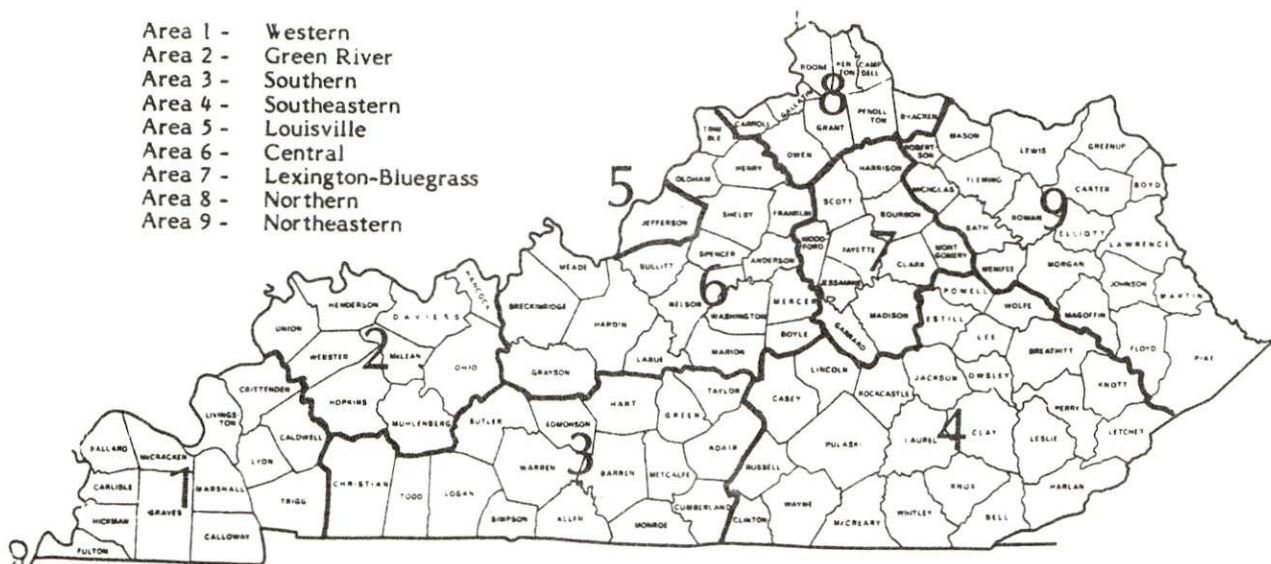
*Not disclosed.

Note: Excludes domestic workers, railway workers, certain nonprofit corporations, majority of federal government workers, and self-employed workers.

Source: Kentucky Cabinet for Human Resources, Average Weekly Wages of Workers Covered by Kentucky Unemployment Insurance Law, 1982.

Occupational wage rates for specific industries are usually not available to most government agencies, and wage data furnished to state employment agencies by individual industrial employers are protected from disclosure by federal law. The most reliable up-to-date wage information can be obtained by direct contact with local employers.

Associated Industries of Kentucky, a voluntary organization of Kentucky businesses, regularly collects occupational wage rates and fringe benefits data from participating member firms. Data are compiled for over 127 clearly defined office, production, and service occupations. Tabulations are published for nine geographical areas of Kentucky, as shown on the map below. It should be noted that the data may be weighted by the preponderance of firms in the larger cities and may be somewhat higher than the rates paid in the smaller communities. Data from these tabulations are available, upon request, from the Kentucky Department of Economic Development, Frankfort, Kentucky 40601.



Associated Industries of Kentucky Area Wage Surveys

PER CAPITA PERSONAL INCOME

<u>Area</u>	<u>1977</u>	<u>1981</u>	<u>Percent Change</u>
Fleming County	\$4,273	\$6,110	43.0
Labor Market Area Range	\$3,454 - 5,710	\$5,212 - 7,965	N/A
Kentucky	5,797	8,416	45.2
U. S.	6,984	10,495	50.3

Source: U. S. Bureau of Economic Analysis, Kentucky Economic Information System, May 1983.

TRANSPORTATION

Rail

There is no rail service directly serving Flemingsburg proper; however, rail service is available at Flemingsburg Junction, 5 miles northwest of Flemingsburg.

Line serving Flemingsburg Junction - T.T.I. Railroad, Inc.

Services - 1 northbound and 1 southbound freight weekly, available for pick-up and set-off. In the general Flemingsburg area, there are 3 team tracks available to accommodate approximately 38 cars. To the south of Flemingsburg at Paris, Kentucky, TTI Railroad joins the Seaboard System Railroad. To the north at Maysville, TTI joins the Chessie System. The nearest piggyback facilities are located in Cincinnati, Ohio.

For details on routing, schedules, rates, and services, contact:

President
T.T.I. System, Inc.
199 East Main Street
Lexington, Kentucky 40507
(606) 253-9200

Highways

Flemingsburg is served by Kentucky Highways 11, 32, and 57, all "AAA" trucking highways. Interstate 64, an east-west interstate highway, is 24 miles southeast of Flemingsburg via Kentucky Highway 32 and is 30 miles southwest via Kentucky 11. U. S. 68 is 25 miles southwest of Flemingsburg via Kentucky Highways 32 and 36. U. S. 68 then provides access to Lexington, 57 miles southwest of Flemingsburg, where there are interchanges for Interstate 75 and the Blue Grass Parkway, making the central and western part of the state easily accessible.

The Flemingsburg Bypass will connect Kentucky 11 North to Kentucky 32 East by crossing Kentucky 32 West and Kentucky 11 South. The first phase, from Kentucky 11 North to Kentucky 11 South, has been completed. The second phase, from Kentucky 11 South to Kentucky 32 East is still in the planning stage. The \$7.5 million project is scheduled to be completed in 1984.

Truck Service

<u>Company</u>	<u>Home Office</u>
Budig Western*	1100 Gest Street Cincinnati, Ohio 45203
McDaniel Motor Express, Inc.** Overnite Transportation Company***	Lexington, Kentucky 40505 1000 Semmes Avenue Richmond, Virginia 23209

*Interstate and intrastate service.

**Intrastate service only.

***Interstate service only.

Source: American Motor Carrier Directory, Spring 1983.

<u>Other Freight Services</u>	<u>Nearest Office or Shipping Center</u>
Emery	Lexington, 57 miles southwest
Federal Express	Lexington, 57 miles southwest
Purolator Courier	Lexington, 57 miles southwest
United Parcel Service	Maysville, 17 miles north

HIGHWAY MILES AND TRUCK TRANSIT TIME IN DAYS FROM FLEMINGSBURG, KENTUCKY, TO SELECTED MARKET CENTERS

City	Delivery		City	Delivery	
	Highway Miles	Time TL		Highway Miles	Time TL
Atlanta, Ga.	419	2	Los Angeles, Ca.	2,237	7
Baltimore, Md.	517	3	Louisville, Ky.	130	1
Birmingham, Ala.	455	2	Nashville, Tenn.	267	2
Chicago, Ill.	368	2	New Orleans, La.	784	3
Cincinnati, Ohio	81	1	New York, N. Y.	689	3
Cleveland, Ohio	297	2	Pittsburgh, Pa.	349	3
Detroit, Mich.	340	2	St. Louis, Mo.	392	2
Knoxville, Tenn.	227	2			

Note: Mileage computations are via the best interstate or primary highways, not necessarily the most direct route of travel.

Sources: Rand McNally Road Atlas, 1979. Official Kentucky Mileage Map, 1980. Delivery time - Budig Western, 1100 Gest Street, Cincinnati, Ohio 45203.

Air

Local

Fleming-Mason Airport
Location: 7 miles north of Flemingsburg
Runways: 1 paved
Length: 3,900 feet*
Traffic
Control: Segmented circle and wind cone
Lighting: VASI; Medium Intensity Runway Lights and beacon -
dusk to dawn
Services: 100 LL and Jet A fuel; A & P repairs; tie downs and
hangar; flight instruction; custom aircraft painting
and upholstery; courtesy car

Nearest Scheduled Commercial Airline Service

Blue Grass Field
Location: 5 miles west of Lexington, Kentucky;
62 miles southwest of Flemingsburg
Runways: 2 paved
Length: 6,500 feet; 3,500 feet
Traffic
Control: Tower
Lighting: Approach lighting system, beacon, runways and
obstructions lighted, VASI
Services: Delta, Frontier, Piedmont, USAir, Comair, Tennessee
Airways; fuel - 100LL and jet-A; hangars, tie-
downs; major A & P repairs, major Avionics repairs;
APU, charter, flight instruction, oxygen, plane
rentals, survival equipment; taxi, limousine,
car rentals, courtesy car; weather information;
restaurant, snack bar

Air Freight
Service: Air freight terminal

Rental Services - Car rentals are available from local automobile dealers.
Truck and trailer rentals are available at Maysville,
17 miles north of Flemingsburg.

Water

The nearest navigable waterway to Flemingsburg is the Ohio River at Maysville, Kentucky, 17 miles to the north, where a 9-foot navigation channel is maintained. The Maysville-Mason County Port Authority is planning the development of a general cargo port at Maysville which will have facilities to handle coal and other bulk commodities.

*There are plans to lengthen the runway from 3,900 to 5,000 feet with construction scheduled to begin late in 1983 or early in 1984.

POWER AND FUEL

Electricity

Company serving Flemingsburg and parts of Fleming County - Kentucky
Utilities Company

Source of power - Kentucky Utilities Company

Total generating capacity - 2,639,100 KW*

For industrial rates contact:

Industrial Development Department
Kentucky Utilities Company
One Quality Street
Lexington, Kentucky 40507
(606) 255-1461

Company serving a major portion of Fleming County - Fleming-Mason
Rural Electric Cooperative Corporation

Source of power - East Kentucky Power Cooperative

Total generating capacity - 1,304,000 KW**

For industrial rates contact:

Industrial Development Division
East Kentucky Power Cooperative
P. O. Box 707
Winchester, Kentucky 40391
(606) 744-4812

Natural Gas

Company serving Flemingsburg - Flemingsburg Utilities System

Source of supply - Columbia Gas of Kentucky, Inc.

Size of transmission mains - 6-inch (supplier);
6-inch (distributor)

Distribution mains - 2, 3, 4 and 6 inches

Distribution pressure - 23 psi

Btu content - 1,000 per cubic foot

Specific gravity - .592

For rates and supplies contact:

Flemingsburg Utilities System
West Water Street
Flemingsburg, Kentucky 41041
(606) 845-2021

*A new generating unit is under construction in Carroll County. Due to be completed in 1984, the unit will have a generating capacity of 511,000 KW.

**East Kentucky Power Cooperative's total generating capacity will be increased when a new 600,000 KW coal-fired generation plant is completed in southeast Clark County in 1992.

Other Fuels

Propane

Buckeye Gas Company
P. O. Box 102
Flemingsburg, Kentucky 41041

Stan Harvey Gas Company
P. O. Box 201
Tollesboro, Kentucky 41189

Ripley Gas Company
1014 South Second Street
Ripley, Ohio 45167

Southern State Flemingsburg
Cooperative
West Water Street
Flemingsburg, Kentucky 41041

Fuel oils

Distillate fuel oil -

Ashland Petroleum Company, Inc.
P. O. Box 312
Elizaville Avenue
Flemingsburg, Kentucky 41041

Warren James, Inc.
East Water Street
Flemingsburg, Kentucky 41041

Tresler Comet Fuel Oil
(Union Oil)
Blue Run Road
Maysville, Kentucky 41056

Residual fuel oil - Arrangements must be made with the refinery.

Low sulphur content coal - Available in Kentucky.

WATER AND SEWERAGE

Public Water Supply

Company serving Flemingsburg - Flemingsburg Utilities System
P. O. Box 126
Flemingsburg, Kentucky 41041
(606) 845-2021

Source - Reservoir

Treatment plant capacity - 720,000 gallons per day

Average daily consumption - 465,000 gallons

Peak daily consumption - 570,000 gallons

Type treatment - Filtration, chlorination, coagulation,
fluoridation and settling

Storage capacity - 550,000 gallons

Size lines - 2, 4, 6 and 8 inches

Average pressure - 95 to 130 psi

Average temperature - 68 degrees F.

MONTHLY WATER RATES

First	2,000 gallons	\$4.50 Minimum
Next	3,000 gallons	1.70 per M gallons
Next	5,000 gallons	1.40 per M gallons
Next	15,000 gallons	1.15 per M gallons
Next	25,000 gallons	.90 per M gallons
Next	50,000 gallons	.70 per M gallons
All over	100,000 gallons	.55 per M gallons

Tap-on charge: Minimum \$125
1-inch service 175

Raw Water

Surface water sources - North Fork Licking River

Average discharge - North Fork Licking River near Lewisburg,
Kentucky, 150 cfs (36years, USGS)

Expected ground water yield - 5 to 50 gpm in the northeastern,
southern and western tips of the county; 5 gpm or less over
the remainder of the county

Sewerage

Company serving Flemingsburg - Flemingsburg Utilities System*
Main Cross
Flemingsburg, Kentucky 41041
(606) 845-2021

Design capacity - 320,000 gallons per day
Average daily flow - 240,000 gallons
Type of treatment - Primary and secondary
Treatment processes - Aeration, clarifier and drying beds
Treated effluent discharged into - Fleming Creek
Size of sanitary mains - 8 and 10 inches
Size of storm mains - 12 and 18 inches
Monthly rates - 80 percent of monthly water bill
Tap-on charge: None

*A \$5 million expansion of the sewage treatment facilities is planned. The project, which will increase the capacity of the treatment plant, is scheduled for completion in 1987.

CLIMATE

Fleming County

Temperature

Normal (30-year record)	55.2 degrees
Average annual 1982	55.5 degrees
Record highest, September 1954 (38-year record)	103.0 degrees
Record lowest, January 1963 (38-year record)	-21.0 degrees
Normal heating degree days (30-year record) (Heating degree day totals are the sums of negative departures of average daily temperatures from 65 degrees F.)	4,729

Precipitation

Normal (30-year record)	44.49 inches
Mean annual snowfall (39-year record)	16.40 inches
Total precipitation 1982	38.76 inches
Mean number days precipitation (.01 inch or more) (38-year record)	131
Mean number days thunderstorms (38-year record)	46

Prevailing Winds (17-year record)

South

Relative Humidity

1 a.m.	77 percent (18-year record)
7 a.m.	81 percent (19-year record)
1 p.m.	60 percent (19-year record)
7 p.m.	64 percent (19-year record)

Source: U. S. Department of Commerce, Environmental Science
Services Administration, Climatological Data, 1982.
Station of record: Lexington, Kentucky.

LOCAL GOVERNMENT

City

Structure - Mayor - 4-year term; 6 council members - 2-year terms
Budget 1982 - General Fund \$ 500,000

Water, Sewer and
Gas Fund 1,000,000

Fees and licenses - Occupational license tax - one percent of the gross wages of individuals; license fees on professions - 9/20 of one percent of annual gross income with a minimum of \$40 per year; business license fees for firms with annual gross receipts of \$200,000 or less range from \$80 to \$160 per year, depending on the type of business; firms with annual gross receipts more than \$200,000 pay a flat fee based on gross receipts

County

Structure - County Judge/Executive - 4-year term;
6 magistrates - 4-year terms
Budget 1982-83 - General Fund \$462,695; Road Fund \$363,200

Assessed Value of Property, 1983*

<u>Classes of Property</u>	<u>Flemingsburg</u>	<u>Fleming County</u>
Real Estate	\$35,000,000 (Est.)	\$165,019,040
Tangibles	11,000,000 (Est.)	29,946,132

*Excludes Homestead Exemptions.

Property Taxes

All property in Kentucky is assessed at 100 percent of fair cash value.

Land and buildings are taxed by the state and may be taxed by local jurisdictions. The state rate is \$0.224 per \$100 of assessed valuation.

Manufacturing machinery, raw materials inventories, pollution control equipment, and goods in the process of manufacture are not subject to local taxation. The state rate is \$0.15 per \$100.

Other tangible personal property owned by manufacturers (automobiles, trucks, finished goods, office furniture, office equipment) is taxed by the state at \$0.45 per \$100 and may be taxed by local jurisdictions.

Intangible personal property located in Kentucky (money in hand, shares of stock, notes, bonds, accounts receivable, and other credits) is taxed by the state at \$0.25 per \$100, and is not subject to local taxation.

Property stored in public warehouses in a transit status is not subject to local taxation. The state rate is only \$0.015 per \$100.

Private leaseholds in industrial facilities owned by cities or counties and financed by industrial revenue bonds are subject to a state tax of \$0.015 per \$100 of value (essentially the lessee's equity, adjusted for appreciation or depreciation). Local taxation is not permitted.

Combined State and Local Rates Per \$100 Valuation, 1982* (100% assessment)

	<u>Site Inside City of Flemingsburg</u>	<u>Site Inside Unincorporated Fleming County</u>
1. Land and buildings	\$0.7784	\$0.5832
2. Mfg. machinery, raw materials, goods in process, pollution control equipment	0.1500	0.1500
3. Finished goods, office equipment, vehicles, other tangibles	1.0639	0.8662
4. Intangibles (accounts rec., notes, bonds, etc.)	0.2500	0.2500
5. Property stored in public warehouses in a transit status	0.0150	0.0150
6. Leaseholds in industrial revenue bond financed plants	0.0150	0.0150

*Kentucky Department of Economic Development.

Utilities Gross Receipts Tax for Schools

A 3 percent tax is levied on utilities receipts for schools in Fleming County. Tax is paid by all consumers of utilities as an add-on to the utilities bills. Exempted are receipts from utilities services that are resold and the receipts from the sale of energy or energy producing fuels that exceed 3 percent of the cost of production in manufacturing, processing, mining or refining.

Planning and Zoning

City agency - Flemingsburg Planning Commission
Zoning enforced - None
Subdivision regulations enforced - Within the city and 2 miles beyond the corporate limits
Local codes enforced - Building and housing codes; site development standards within the city limits and 1,000-foot jurisdiction on the Flemingsburg Bypass
Mandatory state codes enforced - Kentucky Plumbing Code, National Electric Code, Kentucky Boiler Regulations and Standards, Kentucky Building Code (modeled after BOCA code)

Safety

<u>Police</u>	<u>Flemingsburg</u>	<u>Fleming County</u>
Total staff	6	4
Radio-patrol cars	2	3

Fire

Insurance Services Office, Public Protection Classification	7	10
Volunteers	23	23

Rescue Service

Fleming County Rescue Squad:
Number of volunteers - 30
Equipment - Truck, van, porta-power, generator, oxygen, first aid equipment, trailer, dragging equipment, radios with special band, stretcher, portable stretcher and miscellaneous tools
Personnel training - First aid, emergency medical technician training and water rescue training

Refuse Collection and Disposal

	<u>Flemingsburg</u>	<u>Fleming County</u>
Type service	Municipal	Private
Fee charged:		
residential	None	By contract
business	None	By contract
industrial	N/A	By contract
Collection frequency:		
residential	Twice weekly	Weekly
business	Daily	Weekly
industrial	N/A	By contract
Trash pickup	Twice weekly	By contract
Disposal method	Landfill	Landfill

EDUCATION

Public Schools

Fleming County

Total Enrollment (Spring 1983)	2,425
Elementary	1,281*
Middle School	399
High School	745
Student-Teacher Ratio	16-1
Elementary	16-1
Middle School	16-1
High School	17-1
Percent High School Graduates to College (1982)	40.3
Expenditures Per Pupil (1981-82)	\$1,523.12
Bonded Indebtedness (June 30, 1983)	\$2,288,000

*Includes kindergarten.

Area Colleges and Universities

<u>Name</u>	<u>Location (Miles distant)</u>	<u>Enrollment (Fall, 1982)</u>	<u>Highest Degree Conferred</u>
Maysville Community College	Maysville, Kentucky (17)	571	Associate
Morehead State University	Morehead, Kentucky (27)	6,370	Masters, Specialist*
Georgetown College	Georgetown, Kentucky (56)	1,029	Masters
Lexington Technical Institute	Lexington, Kentucky (57)	2,462	Associate
Transylvania University	Lexington, Kentucky (57)	701	Baccalaureate**
University of Kentucky	Lexington, Kentucky (57)	22,829	Doctorate, M.D., D.M.D., J.D.
Shawnee State Community College	Portsmouth, Ohio (58)	2,325	Associate
Kentucky Christian College	Grayson, Kentucky (59)	448	Baccalaureate

Vocational Schools

Both the state vocational-technical schools and the area vocational education centers are operated by the Kentucky Department of Education. The state vocational-technical schools enroll persons full time who are at least 16 years of age and not in school. These students attend classes for six hours each day. The area vocational education centers are designed to accommodate high school students who are at least 15 years of age. These students attend vocational school for three hours each day. The state vocational-technical schools and the area education centers offer evening courses to enable working adults to upgrade current job skills.

(Contd.)

*Joint doctoral degree programs are offered in cooperation with the University of Kentucky, Lexington. The degrees are issued by the University of Kentucky.
 **Courses in a masters degree program are taught on the Transylvania campus by faculty members of Xavier University of Cincinnati. The degree is issued by Xavier University.

Nearest State School

Location	Central Kentucky State Vocational-Technical School Lexington
Miles Distant	57
Curriculum	Business and Office Accounting Clerical Secretarial Consumer and Home Economics Commercial Foods Health and Personal Services Occupations Cosmetology Dental Assistant Nurse's Aide Practical Nursing Surgical Technician Industrial Education Air Conditioning Auto Body Repair Auto Mechanics Carpentry Drafting Electronics Graphic Arts Industrial Electricity Machine Shop Masonry Welding Learning Resource Center

Nearest Area Education Center

Location	Maysville Area Vocational Education Center Maysville
Miles Distant	17
Curriculum	Adult Agriculture Business and Office Industrial Education Auto Body Auto Mechanics Carpentry Drafting Electricity Welding Comprehensive Employment and Training Act Licensed Practical Nursing

Arrangements can be made to provide training in the specific production skills required by an industrial plant. Instruction may be conducted either in the vocational school or in the industrial plant, depending upon the desired arrangement and the availability of special equipment.

HEALTH

Local Medical Personnel

Physicians - 6
Dentists - 3

Hospitals

<u>General Hospital</u>	<u>Location</u>	<u>Beds</u>
Fleming County Hospital	Flemingsburg	52

General hospital facilities - Operating room, laboratory, X-ray, obstetrical section, emergency room, physical therapy, respiratory therapy, pharmacy, ultrasound, nuclear medicine, and cardiac rehabilitation

Medical staff - 6 active physicians, 1 surgeon, 4 visiting consultant physicians, 1 nurse anesthetist, 1 physical therapist, 1 respiratory therapist, 1 pharmacist, 18 registered nurses and 7 licensed practical nurses

Other Medical Facilities

Fleming County Comprehensive Care Center-Comprehend, Inc.
Fleming County Home Health Service

Ambulance Service

County-wide ambulance service is provided by three funeral homes located in Fleming County.

Public Health

Facility - Fleming County Health Department

Staff - Administrator, 2 public health nurses, 3 community health workers, environmentalist, environmentalist's assistant, vital statistician, 5 M.D. clinicians (part-time), dental clinician (part-time)

OTHER LOCAL FACILITIES

Communications

Telephone - General Telephone Company
Services - Standard

Telegraph - Western Union
Services - Toll-free number, 1-800-325-5100

Postal - U. S. Post Office
Class - First
Mail received - Once daily
Mail dispatched - Once daily

Newspapers - 3
Weekly and circulation - The Fleming Gazette, 4,400
The Fleming Shopper, 5,200
Flemingsburg Times-Democrat, 3,000
Other papers received from - Louisville and Lexington, Kentucky;
Cincinnati, Ohio

Radio -*
Stations received from - Louisville, Lexington, Maysville, and
Morehead, Kentucky; Cincinnati, Ohio

Television -
Cable service
Reception from - Lexington, Kentucky; Dayton and Cincinnati, Ohio;
Huntington, West Virginia
Kentucky Educational
Television - Morehead transmitter - Channel 38

Library Services

Public library - Fleming County Public Library
Size collection - 26,633 volumes
Circulation, 1981-82 - 93,001
Services - Story hour, films, books, records, magazines, pictures,
meeting rooms, bookmobile, genealogical material, and the Head
Start programs

*There are plans for a radio station to begin operations in Flemingsburg by the end of 1983.

Religious Institutions

Number of churches - 13

Denominations - Assembly of God
Baptist
Catholic
Christian
Episcopal
First Church of God
Kentucky Christian
Methodist
Nazarene
Presbyterian

Nearest Synagogues - Lexington, Kentucky, 57 miles southwest
Congregations - Adath Israel (reform)
Ohavey Zion (traditional)

Financial Institutions

<u>Banks</u>	<u>Assets</u>	<u>Deposits</u>	<u>Statement Date</u>
Farmers Deposit Bank	\$41,219,641.82	\$36,692,021.62	12/31/82
The Peoples Bank of Fleming County	49,757,991.83	44,059,510.56	12/31/82

Hotels and Motels

Total number - 1
Total rooms - 19

Clubs and Organizations

American Legion	Historical Society
American Legion Auxiliary	Homemakers
Beta Sigma Phi	Hospital Auxiliary
Boy Scouts	Independent Order of Odd Fellows (IOOF)
Cub Scouts	Inquirers Club
Eastern Star	Junior Women's Club
Farm Bureau	Kiwanis Club
Fleming County Chamber of Commerce	Lions Club
Fleming County Community Theater	Little League
Fleming County Concert Organization	Livestock Improvement Association
4-H	Masons
Future Farmers of America (FFA)	Northeastern Girl Scouts
Future Homemakers of America (FHA)	Parent Teachers Organization (PTO)
Garden Club	Rebekahs
Girl Scouts	Senior Women's Club
	Sportsman Club
	Veterans of Foreign Wars (VFW)
	Veterans of Foreign Wars Ladies Auxiliary

RECREATION

Local

Flemingsburg offers a variety of public recreation facilities which includes a city park and playground, two tennis courts, two basketball goals and playground equipment. There are also two baseball diamonds, a football field, a swimming pool and four basketball goals provided in the city.

Private recreation facilities include a country club, golf course, drive-in theater, and tennis court.

Court Day is held every year on the second Sunday and Monday in October and is one of Kentucky's most popular events. This is a time for parades, old time trading and selling of items of every description, and a day filled with fun for all.

The city and county governments of Fleming County have jointly funded a 124-acre industrial park, which includes a 15-acre recreational park. Facilities include a swimming pool, tennis court, and baseball and softball fields.

Other attractions in Fleming County include three of the state's fifteen covered bridges and the recently renovated railroad depot.

Area (Within 50 miles)

Fox Valley Recreation Area, 7 miles southeast of Flemingsburg, is a 225-acre park and lake with facilities for camping, fishing, picnicking, and hiking.

Blue Licks Battlefield State Park is located 15 miles west of Flemingsburg. The 100-acre park is on the site of what is known as "The Last Battle of the Revolution" and the last major confrontation between the Indians and the pioneers. A museum features Indian and pioneer artifacts, an audiovisual program, and prehistoric bones from animals trapped at Blue Licks. Facilities include ten primitive campsites, a gift shop, picnic shelters and grills, a playground, a snack bar, and an Olympic-size swimming pool. Fishing is available at the Licking River which runs through the park.

Cave Run Lake, constructed by the U. S. Army Corps of Engineers, is located 33 miles southeast of Flemingsburg within the 640,000-acre Daniel Boone National Forest. The lake area offers everything for the camper, the boatsman, the hunter, the fisherman, and "the lover of leisure."

Carter Caves State Resort Park, 50 miles east of Flemingsburg, provides a restful atmosphere with its mountain wildflowers, a rippling stream, the underground wonders of three caves, a lodge, a restaurant, and a gift shop. Recreational facilities available include something for the whole family with playgrounds, two swimming pools (one Olympic-size), tennis courts, shuffleboard, a 9-hole golf course, boating, fishing, horseback riding, picnicking, and cave tours.

COMMUNITY IMPROVEMENTS

Recent

The Fox Spring Avenue Project was recently completed. The \$621,000 project included the demolition of six vacated houses, the construction of two new houses, the reconstruction of 26 old houses, the installation of two miles of sewer line and the construction of a recreation park. The park includes basketball goals, a picnic area, and a playground.

The old railroad depot has been renovated at a cost of \$60,000.

The City of Flemingsburg recently purchased a new \$20,000 garbage truck and packer.

Under Way

The Flemingsburg Bypass will connect Kentucky 11 North to Kentucky 32 East by crossing Kentucky 32 East and Kentucky 11 South. The first phase, from Kentucky 11 North to Kentucky 11 South, has been completed. The second phase, from Kentucky 11 South to Kentucky 32 East is still in the planning stage. The \$7.5 million project is scheduled to be completed in 1984.

Planned

A \$5 million expansion of Flemingsburg's sewerage treatment facilities is planned. The project, which will increase the capacity of the treatment plant, is scheduled for completion in 1987.

The Fleming-Mason Airport has plans to lengthen the runway from 3,900 feet to 5,000 feet. Construction is scheduled to begin late in 1983 or early in 1984.

The City of Flemingsburg has applied for a Community Development Grant to make improvements to the two dams at the two city reservoirs. The cost of the project will be approximately \$575,000.

The Fleming County School System plans to introduce two new programs during the 1983-84 school year. These programs will be the Gifted and Talented Program for the 5th and 6th grades and a Vision Impaired Program.

A radio station, to be located in Flemingsburg, is scheduled to be in operation by the end of 1983.



Kentucky Department of Economic Development
Capital Plaza Tower
Frankfort, Kentucky 40601 • Phone (502) 564-4270