

1977

Industrial Resources - Fulton County - Hickman

Kentucky Library Research Collections
Western Kentucky University, spcol@wku.edu

Follow this and additional works at: https://digitalcommons.wku.edu/fulton_cty

 Part of the [Business Administration, Management, and Operations Commons](#), [Growth and Development Commons](#), and the [Infrastructure Commons](#)

Recommended Citation

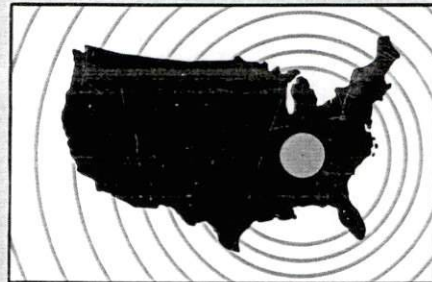
Kentucky Library Research Collections, "Industrial Resources - Fulton County - Hickman" (1977). *Fulton County*. Paper 13.
https://digitalcommons.wku.edu/fulton_cty/13

This Report is brought to you for free and open access by TopSCHOLAR®. It has been accepted for inclusion in Fulton County by an authorized administrator of TopSCHOLAR®. For more information, please contact topscholar@wku.edu.

INDUSTRIAL RESOURCES

HICKMAN

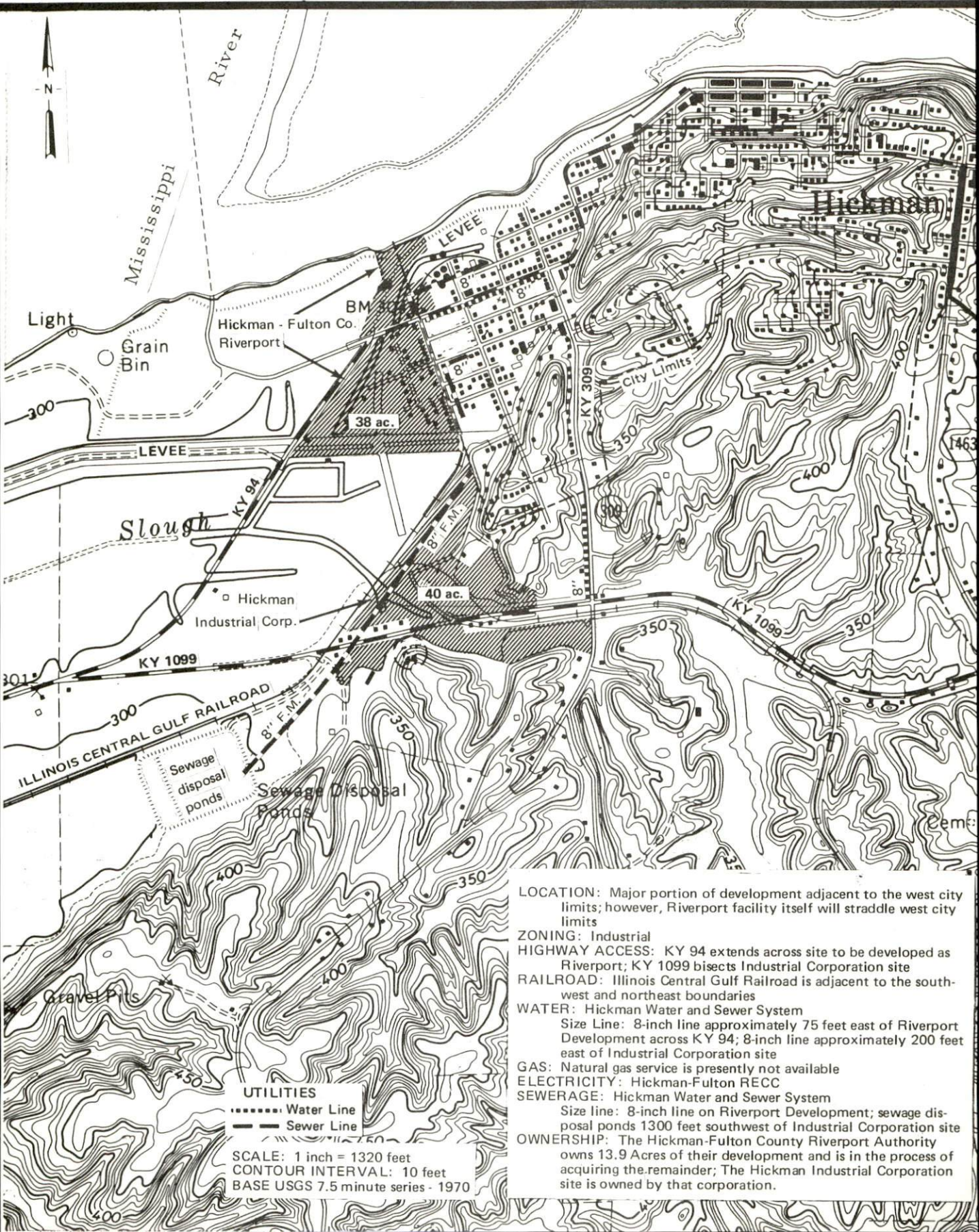
**Kentucky
first**



DEPARTMENT OF COMMERCE

HICKMAN, KENTUCKY --- Site No. 177 -- 78 Acres

For more information contact Fulton County - Hickman Chamber of Commerce, Box 29, Hickman, Kentucky 42050, or the Industrial Development Division, Kentucky Department of Commerce, Capital Plaza Tower, Frankfort, Kentucky 40601.



UTILITIES
 Water Line
 - - - - - Sewer Line

SCALE: 1 inch = 1320 feet
 CONTOUR INTERVAL: 10 feet
 BASE USGS 7.5 minute series - 1970

LOCATION: Major portion of development adjacent to the west city limits; however, Riverport facility itself will straddle west city limits

ZONING: Industrial

HIGHWAY ACCESS: KY 94 extends across site to be developed as Riverport; KY 1099 bisects Industrial Corporation site

RAILROAD: Illinois Central Gulf Railroad is adjacent to the southwest and northeast boundaries

WATER: Hickman Water and Sewer System
 Size Line: 8-inch line approximately 75 feet east of Riverport Development across KY 94; 8-inch line approximately 200 feet east of Industrial Corporation site

GAS: Natural gas service is presently not available

ELECTRICITY: Hickman-Fulton RECC

SEWERAGE: Hickman Water and Sewer System
 Size line: 8-inch line on Riverport Development; sewage disposal ponds 1300 feet southwest of Industrial Corporation site

OWNERSHIP: The Hickman-Fulton County Riverport Authority owns 13.9 Acres of their development and is in the process of acquiring the remainder; The Hickman Industrial Corporation site is owned by that corporation.

INDUSTRIAL RESOURCES

HICKMAN, KENTUCKY

Prepared by
The Kentucky Department of Commerce
Division of Research and Planning
in cooperation with
The Fulton County-Hickman Chamber of Commerce
and
The City of Hickman

1977

TABLE OF CONTENTS

<u>Chapter</u>	<u>Page</u>
INDUSTRIAL SITES.	i
HICKMAN - A RESOURCE PROFILE	1
THE LABOR MARKET AREA	3
Population	3
Labor Force Characteristics of Residents, 1975	3
Nonagricultural Employment by Industry, by Place of Work, 1975	4
Hickman Manufacturing Firms, Their Products and Employment	5
Labor Organizations	5
Estimated Male Labor Supply	9
Estimated Female Labor Supply	9
Average Weekly Wages by Industry, by Place of Work, 1975	10
Per Capita Personal Income	12
TRANSPORTATION.	13
Rail	13
Highways	13
Truck Service	13
Air	14
Taxi	17
Water	17
POWER AND FUEL.	18
Electricity	18
Natural Gas	19
Other Fuels	19
WATER AND SEWERAGE	21
Water	21
Sewerage	25
CLIMATE	26

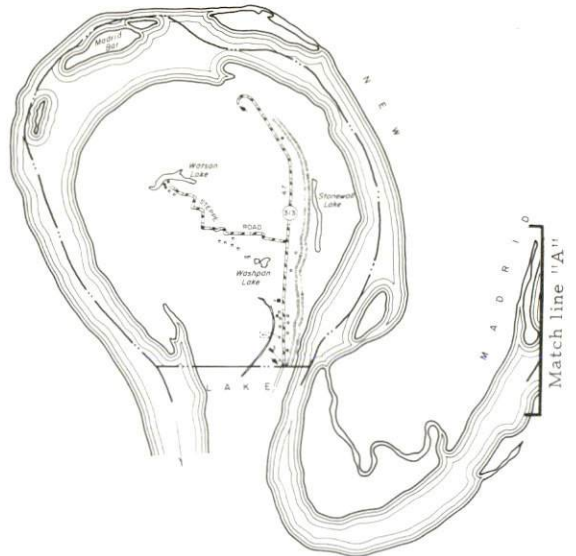
<u>Chapter</u>	<u>Page</u>
LOCAL GOVERNMENT	27
City	27
County	27
Assessed Value of Property, 1976	27
Property Taxes	27
Local Property Tax Rate Per \$100 of Assessed Valuation, 1976	28
Utilities Gross Receipts Tax for Schools	28
Planning and Zoning	28
Safety	29
Police	29
Fire	29
Rescue Service	29
Solid Waste	29
EDUCATION	30
Public Schools	30
Area Colleges and Universities	30
Vocational Schools	31
HEALTH	33
Local Medical Personnel	33
Hospitals	33
Ambulance Service	33
Public Health	33
OTHER LOCAL FACILITIES	34
Communications	34
Library Services	34
Religious Institutions	35
Financial Institutions	35
Hotels and Motels	35
Clubs and Organizations	36
RECREATION	37
COMMUNITY IMPROVEMENTS	39

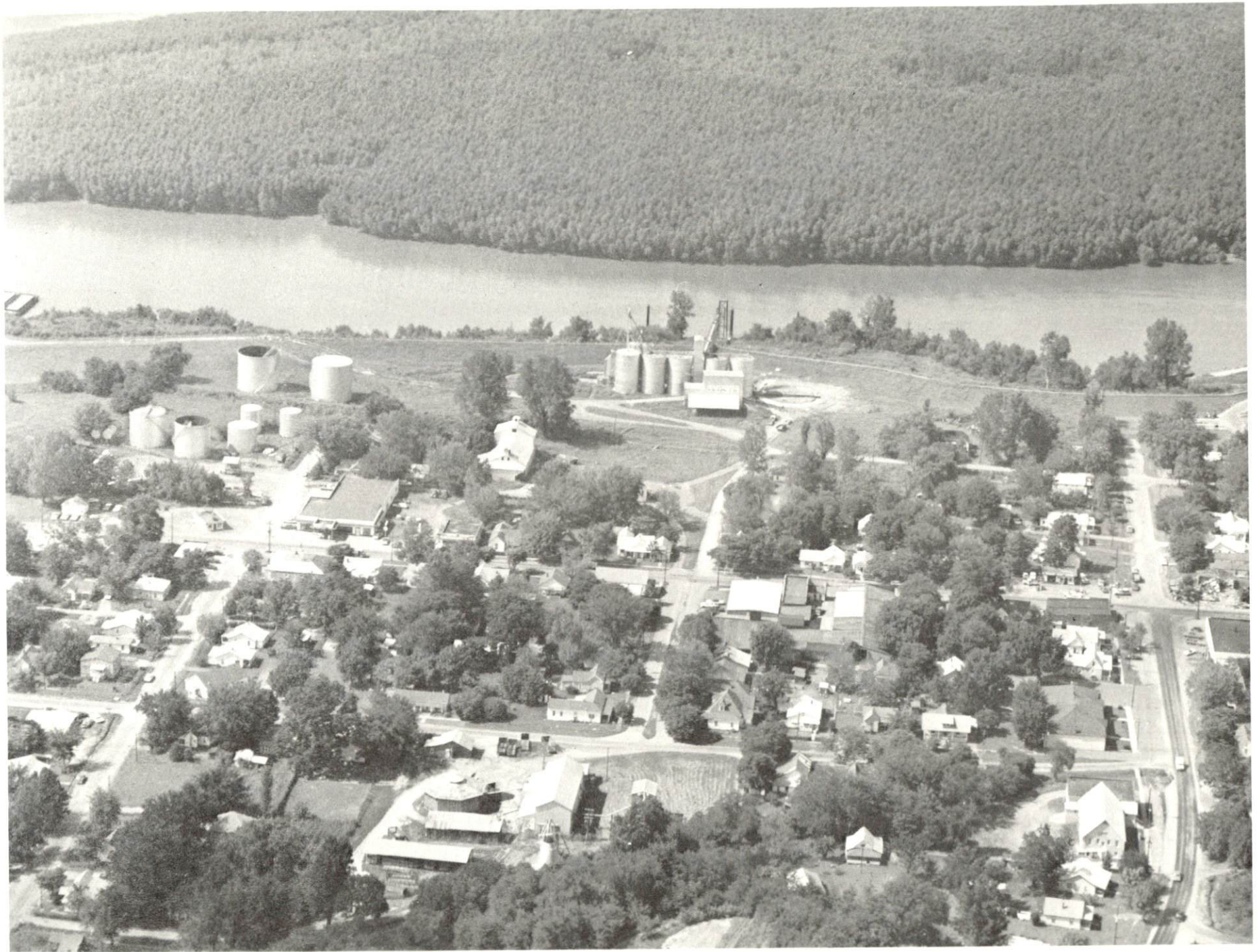
GENERAL HIGHWAY MAP FULTON COUNTY KENTUCKY

PREPARED BY THE
KENTUCKY DEPARTMENT OF TRANSPORTATION
 OFFICE OF TRANSPORTATION PLANNING
 DIVISION OF FACILITIES PLANNING
 IN COOPERATION WITH THE
U.S. DEPARTMENT OF TRANSPORTATION
 FEDERAL HIGHWAY ADMINISTRATION



ORIGINAL DATA 1969		
REVISIONS		
DATE	BY	DATE
11-70	J.R.D.	
11-71	J.R.D.	
11-72	J.R.D.	
11-73	J.R.D.	
11-74	J.R.D.	
11-75	J.R.D.	
11-76	J.R.D.	
11-77	J.R.D.	
11-78	J.R.D.	



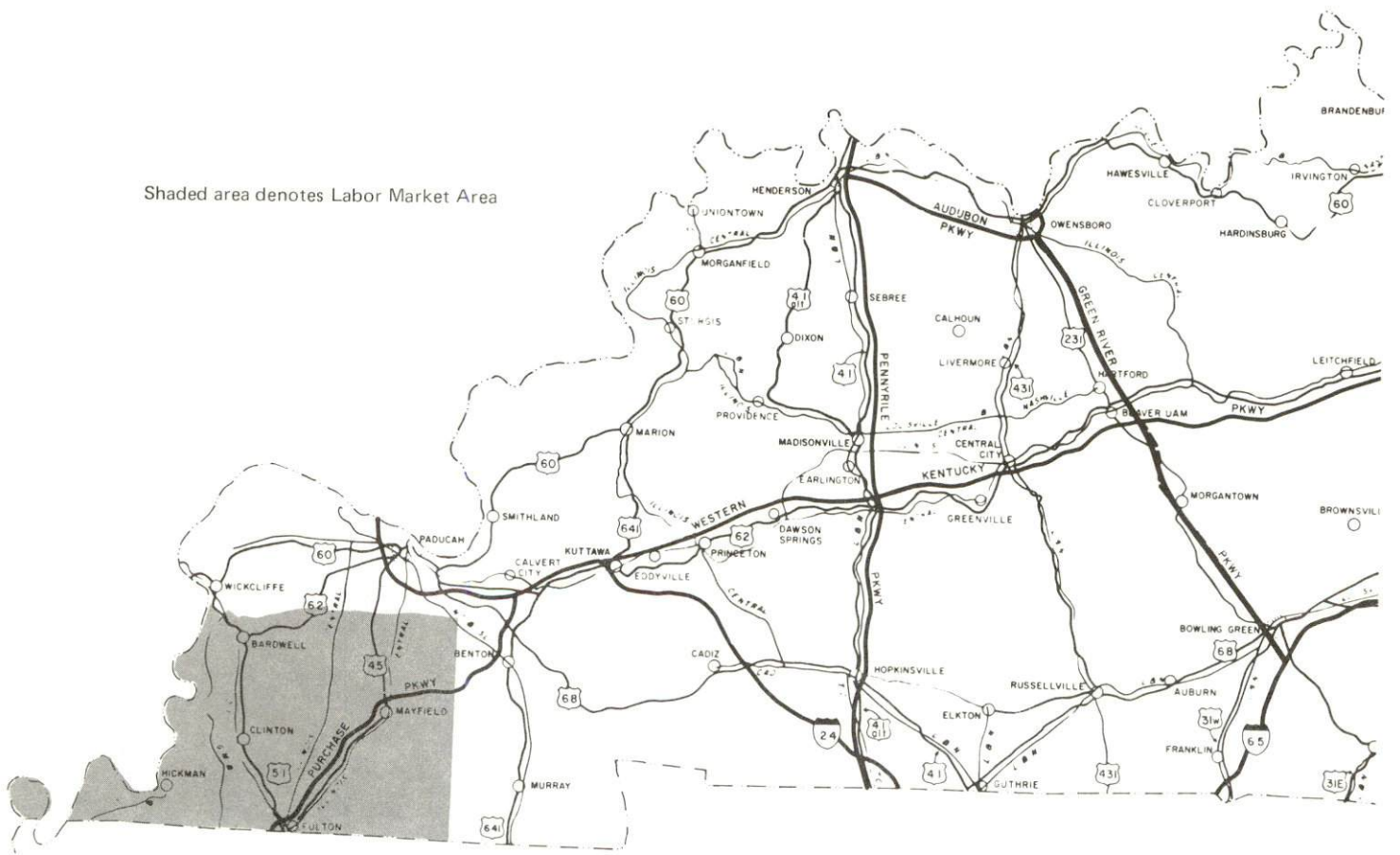


AERIAL VIEW OF HICKMAN, KENTUCKY

HICKMAN LABOR MARKET AREA



Shaded area denotes Labor Market Area



HICKMAN, KENTUCKY - A RESOURCE PROFILE

Hickman, the county seat of Fulton County and a 1976 "All Kentucky City," is located on the south side of the Great Bend of the Mississippi River. Hickman is 180 miles from Nashville, Tennessee; 207 miles from St. Louis, Missouri; and 272 miles from Louisville, Kentucky. In 1973, Hickman had an estimated population of 2,674.

Fulton County, with a land area of 203 square miles, is located in the extreme southwestern portion of Kentucky. The State of Tennessee forms the southern border of Fulton County and the Mississippi River separates Fulton County from the state of Missouri on the west. In 1975, Fulton County had an estimated population of 9,500.

The Economic Framework

The total number of Fulton County residents employed in 1975 averaged 3,670, with nonagricultural jobs accounting for 3,115 workers. Manufacturing employers in the county reported 590 workers; construction firms 100; transportation, communications, and public utilities 80; wholesale and retail trade 930; finance, insurance, and real estate 110; and employees in the service industries 350. Major industrial products are men's and boys' clothing and graphite products.

Total unemployment in Fulton County averaged 7.0 percent of the labor force in 1975.

Per capita personal income in the county in 1974 was \$3,947, an increase of 38.2 percent since 1970.

The Hickman labor market area includes Fulton, Hickman, Carlisle and Graves Counties in Kentucky and Lake, Obion and Weakley Counties in Tennessee. The total number of residents in the Kentucky portion of the labor market area employed in 1975 averaged 20,980, with nonagricultural jobs accounting for 18,800 workers. Manufacturing employers in the area reported 4,920 workers; mining and quarrying 100; construction firms 440; transportation, communications, and public utilities 420; wholesale and retail trade 3,080; finance, insurance, and real estate 425; and employees in the service industries 1,505.

Resources for Growth

1. Labor Supply - There is a current estimated labor supply of 3,510 men and 3,750 women available for industrial jobs in the Hickman labor market area. In addition, 5,302 young men and 5,044 young women in this area will become 18 years of age before 1983 and potentially available for work.

2. Transportation - The local transportation capacity is good. The Illinois Central Gulf Railroad provides rail service to Hickman. An interchange of the Purchase Parkway is located only 19 miles from Hickman. Three trucking companies serve the city and a United Parcel Service shipping center is located at Paducah, 67 miles away. The Fulton Municipal Airport, a small craft airport, is located at Fulton, 20 miles to the east, and commercial air service is available at Barkley Field, Paducah. Water transportation is excellent. Hickman's harbor is the only still water port on the Mississippi River between St. Louis, Missouri, and Memphis, Tennessee. A major new general cargo facility will be opened within the Hickman harbor.

3. Utilities and Fuel - Hickman is supplied electrical power by the Hickman Electric System, whose source of supply is the Tennessee Valley Authority. Fulton County is served by the Hickman-Fulton Counties ECC whose supplier is also TVA. Hickman is furnished natural gas by the Hickman Natural Gas System, supplied by the Trunkline Gas Company. There are four distributors of propane and seven distributors of fuel oil located within 20 miles of Hickman. Low sulphur content coal is available in Kentucky.

4. Education - Two public school systems operate in Fulton County - the Fulton County School System and the Fulton Independent School District. There are three universities, one senior college and one community college located within 75 miles of Hickman. The Fulton County Area Vocational Education Center, in Hickman, offers seven courses of study, and the West Kentucky State Vocational-Technical School, 67 miles north of Hickman in Paducah, offers fifteen courses.

THE LABOR MARKET AREA

POPULATION			Percent Nonwhite
Area	1975*	1970	1970
Hickman	2,674**	3,048	19.7
Labor Market Area	53,900	52,740	N.A.
Fulton County	9,500	10,183	16.4
Carlisle County	5,600	5,354	1.2
Graves County	32,300	30,939	4.9
Hickman County	6,500	6,264	12.5

*Provisional Estimates.

**1973 Population Estimates.

Sources: U. S. Department of Commerce, Bureau of the Census, Census of Population, 1970. U. S. Department of Commerce, Bureau of the Census, Current Population Reports, Series P-25, No. 562, June 1975; Series P-26, No. 75-17, May 1976.

LABOR FORCE CHARACTERISTICS OF RESIDENTS, 1975

	Fulton County	Labor Market Area
Civilian Labor Force	3,941	23,147
Employment	3,667	20,976
Agricultural	552	2,172
Nonagricultural	3,115	18,804
Unemployment	274	2,171
Rate of Unemployment (%)	7.0	9.4

Source: Kentucky Department for Human Resources, Kentucky Labor Force Estimates, Annual Averages, 1975.

NONAGRICULTURAL EMPLOYMENT
BY INDUSTRY, BY PLACE OF WORK, 1975

	<u>Fulton County</u>	<u>Labor Market Area</u>
All Industries	2,170	10,911
Mining & Quarrying	*	97
Contract Construction	99	442
Manufacturing	590	4,918
Food & Kindred Products	96	226
Apparel, Textiles, Leather	223	1,723
Lumber, Furniture	29	79
Printing & Publishing, Paper	16	77
Chemicals, Petroleum & Coal,		
Rubber	54	1,558
Stone, Clay & Glass	0	424
Machinery, Metal Products,		
Equipment	172	733
Other Manufacturing	0	97
Transportation, Communications &		
Public Utilities	82	418
Wholesale & Retail Trade	929	3,076
Finance, Insurance & Real Estate	106	425
Services	350	1,505
Other	4	21

*Not disclosed.

Note: Excludes domestic workers, railway workers; certain nonprofit corporations; majority of federal, state, and local government workers; and self-employed workers. Labor market area totals for some employment categories exclude employment that was not disclosed for individual counties. Manufacturing detail may not add to totals because of rounding of base data.

Source: Kentucky Department for Human Resources, Average Monthly Workers Covered by Kentucky Unemployment Insurance Law, 1975.

HICKMAN MANUFACTURING FIRMS,
THEIR PRODUCTS AND EMPLOYMENT

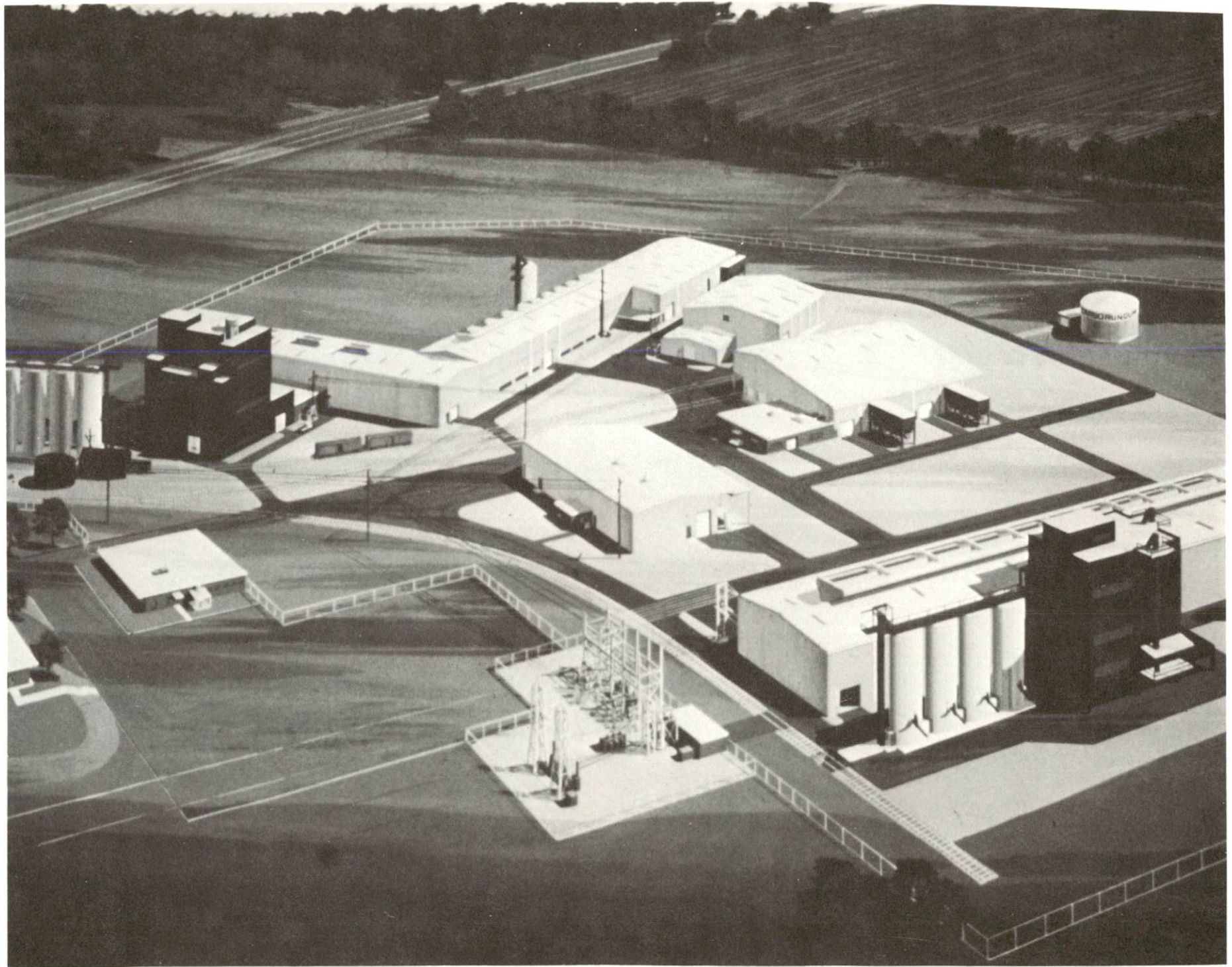
<u>Firm</u> (Establishment date)	<u>Product</u>	<u>Employment</u>			<u>Organized</u>
		<u>Total</u>	<u>Male</u>	<u>Female</u>	
Cagles Glass and Supply Company (1953)	Aluminum storm doors and windows	1	0	1	
Graphite Products Division, The Carborundum Company (1967)	Graphite products	179	175	4	*
The Hickman Courier (1859)	Newspaper, offset printing	4	1	3	
Lattus Ready Mix (1963)	Ready mixed concrete, concrete products	4	4	0	
Hickman Garment Company (1976)	Outerwear	N/A			*
Roper Pecan Company (1940)	Shelled pecans	67	12	55	

*See Labor Organizations below.

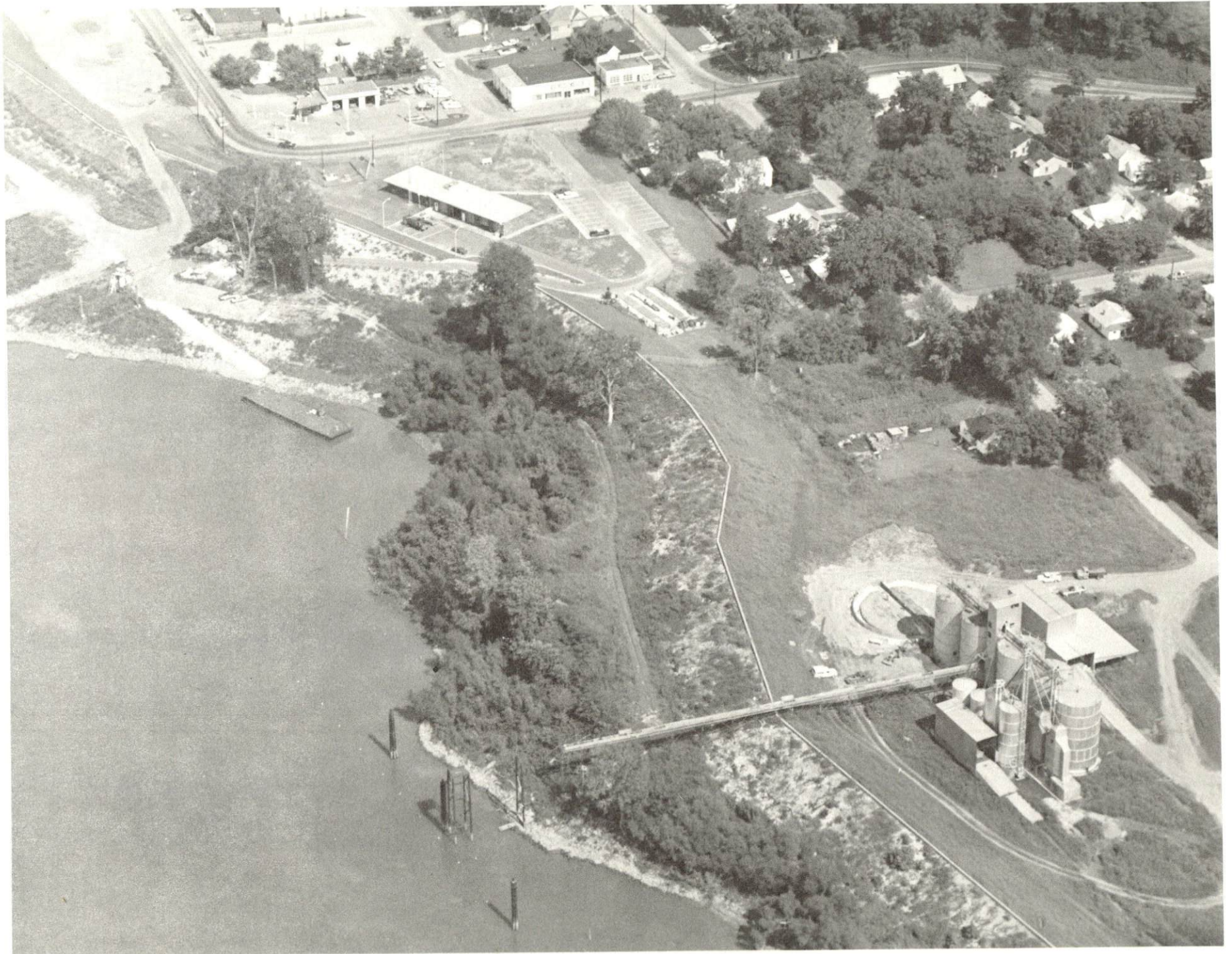
Source: Kentucky Department of Commerce, 1977 Kentucky Directory of Manufacturers.

LABOR ORGANIZATIONS

<u>Union</u>	<u>Representing manufacturing workers at:</u>
Oil, Chemical and Atomic Workers International Union	Graphite Products Division, The Carborundum Company
Amalgamated Clothing Workers of America, AFL-CIO	Hickman Garment Company



THE CARBORUNDUM COMPANY



FULTON COUNTY GRAIN COMPANY



BUNGE GRAIN TERMINAL

ESTIMATED MALE LABOR SUPPLY
HICKMAN LABOR MARKET AREA

Area	Current			Future	
	Total	Not in Labor Force	Unemployed	Under- employed	Reaching 18 yrs. of age before 1983
Labor Market					5,302
Area	3,510				458
Fulton	370	40	170	160	233
Carlisle	290	0	150	140	1,418
Graves	1,420	0	920	500	305
Hickman	260	0	160	100	
Lake*	310	N/A	N/A	N/A	427
Obion*	560	N/A	N/A	N/A	1,337
Weakley*	300	N/A	N/A	N/A	1,124

*February 1977.

Sources: Kentucky Department for Human Resources, Kentucky Labor Supply Estimates by County, 1976. Tennessee Department of Employment Security. Kentucky Department of Commerce, Future Labor Supply before 1983.

ESTIMATED FEMALE LABOR SUPPLY
HICKMAN LABOR MARKET AREA

Area	Current			Future	
	Total	Not in Labor Force	Unemployed	Under- employed	Reaching 18 yrs. of age before 1983
Labor Market					5,044
Area	3,750				458
Fulton	640	320	100	220	227
Carlisle	350	170	60	120	1,334
Graves	1,160	0	530	630	298
Hickman	290	90	90	110	
Lake*	130	N/A	N/A	N/A	398
Obion*	670	N/A	N/A	N/A	1,279
Weakley*	510	N/A	N/A	N/A	1,050

*February 1977.

Sources: Kentucky Department for Human Resources, Kentucky Labor Supply Estimates by County, 1976. Tennessee Department of Employment Security. Kentucky Department of Commerce, Future Labor Supply before 1983.

AVERAGE WEEKLY WAGES BY INDUSTRY,
BY PLACE OF WORK, 1975

	<u>Fulton County</u>	<u>Carlisle County</u>
All Industries	\$131.83	\$105.08
Mining & Quarrying	*	0
Contract Construction	206.49	98.69
Manufacturing	148.76	*
Transportation, Com- munications & Public Utilities	203.79	*
Wholesale & Retail Trade	120.63	94.07
Finance, Insurance & Real Estate	135.15	95.68
Services	94.30	129.99
Other	92.95	0
	<u>Graves County</u>	<u>Hickman County</u>
All Industries	\$152.44	\$115.51
Mining & Quarrying	155.63	0
Contract Construction	170.18	122.48
Manufacturing	172.44	115.87
Transportation, Com- munications & Public Utilities	207.59	164.51
Wholesale & Retail Trade	121.62	113.42
Finance, Insurance & Real Estate	155.57	132.47
Services	110.78	89.20
Other	69.24	0

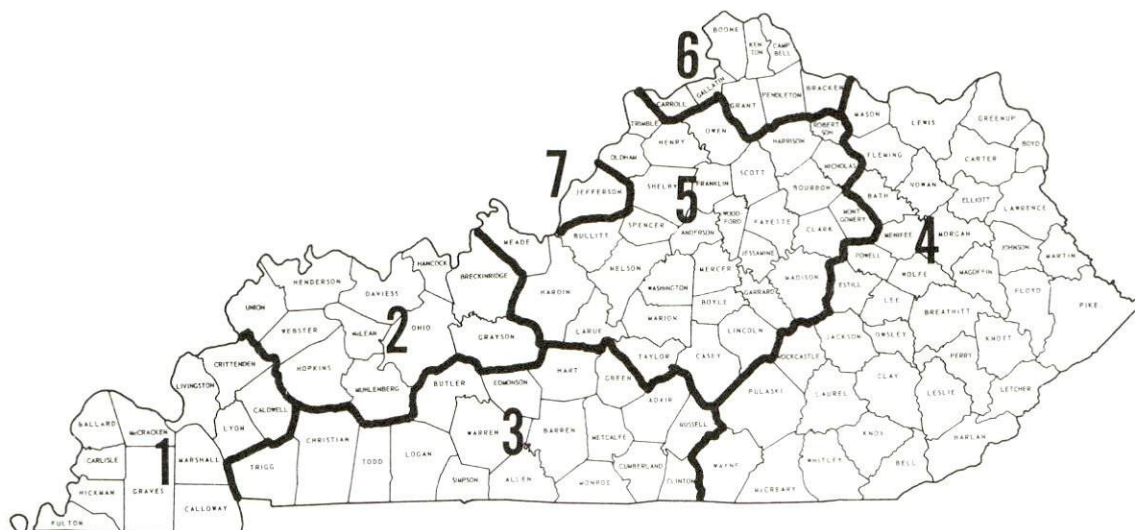
*Not disclosed.

Note: Excludes domestic workers, railway workers; certain nonprofit corporations; majority of federal, state, and local government workers; and self-employed workers.

Source: Kentucky Department for Human Resources, Average Weekly Wages of Workers Covered By Unemployment Insurance, 1975.

Occupational wage rates for specific industries are usually not available to most government agencies, and wage data furnished to state employment agencies by individual industrial employers is protected from disclosure by federal law. The most reliable up-to-date wage information can be obtained by direct contact with local employers.

Associated Industries of Kentucky, a voluntary organization of Kentucky businesses, regularly collects occupational wage rates and fringe benefits data from participating member firms. Data is compiled for over 127 clearly defined office, production, and service occupations. Tabulations are published for seven regions of Kentucky, as shown on the map below. It should be noted that the data may be weighted by the preponderance of firms in the larger cities and may be somewhat higher than the rates paid in the smaller communities. Data from these tabulations are available, upon request, from the Kentucky Department of Commerce, Frankfort, Kentucky 40601.



Associated Industries of Kentucky Area Wage Surveys

Up-to-date occupational wage rates of the existing industries are maintained by South Kentucky Industrial Development Association, Post Office Box 726, Hopkinsville, Kentucky 42240.

PER CAPITA PERSONAL INCOME

<u>Area</u>	<u>1974</u>	<u>1970</u>	<u>Percent Change</u>
Fulton County	\$3,947	\$2,856	38.2
Labor Market Area			
Range	\$2,842 - 4,521	\$2,316 - 3,022	N. A.
Kentucky	4,442	3,112	42.7
U. S.	5,448	3,966	37.4

Sources: U. S. Department of Commerce, Bureau of Economic Analysis, Survey of Current Business, August 1975. U. S. Department of Commerce, Bureau of Economic Analysis, March 1976.

TRANSPORTATION

Rail

Line serving Hickman - Illinois Central Gulf Railroad
Services - 2 freights weekly; piggyback facilities in Fulton, 20 miles east

For details on routing, schedules, rates, and services, contact:

Manager of Industrial Development
Illinois Central Gulf Railroad Company
112 North 4th Street
St. Louis, Missouri 63102
(314) 241-9400

Highways

Kentucky Route 166 connects Hickman with the Purchase Parkway at Fulton, 19 miles to the east. Kentucky Route 94 also connects Hickman with Fulton.

Truck Service

Company

Henry Edwards Trucking
Company

Harper Truck Service, Inc.

McLean Trucking Company

Home Office

Post Office Box 97
Fulton Highway
Clinton, Kentucky 42031
1230 North 8th Street
Post Office Box 338
Paducah, Kentucky 42001
Post Office Box 213
Winston-Salem,
North Carolina 27102

Other Freight Services

United Parcel Service

Nearest Shipping Center

Paducah, 67 miles away

HIGHWAY MILES AND TRUCK TRANSIT TIME IN DAYS FROM
HICKMAN, KENTUCKY, TO SELECTED MARKET CENTERS

City	Delivery		City	Delivery	
	Highway Miles	Time TL		Highway Miles	Time TL
Atlanta, Ga.	422	2	Los Angeles, Calif.	1,960	4
Birmingham, Ala.	376	2	Louisville, Ky.	272	2
Chicago, Ill.	428	2	Nashville, Tenn.	180	2
Cincinnati, Ohio	373	2	New Orleans, La.	533	2
Cleveland, Ohio	617	2	New York, N. Y.	1,020	2
Detroit, Mich.	632	2	Pittsburgh, Pa.	660	3
Knoxville, Tenn.	357	2	St. Louis, Mo.	207	1

Source: Delivery Time Only - Henry Edwards Trucking Company,
Post Office Box 97, Clinton, Kentucky 42031

Air

Nearest Commercial

Barkley Field

Location: Paducah, 67 miles north of Hickman

Runways: 2 paved

Length: 4,000 feet and 6,500 feet

Traffic

Control: Tower, ground control, and approach control

Lighting: Beacon, boundary, obstruction, runway lights and runway end identification lights; medium intensity approach lighting system

Services: Delta and Ozark Airlines; 100 octane, JA-1 fuel; major A&E repairs; storage; taxi, limousine, U-Drive-It; restaurant

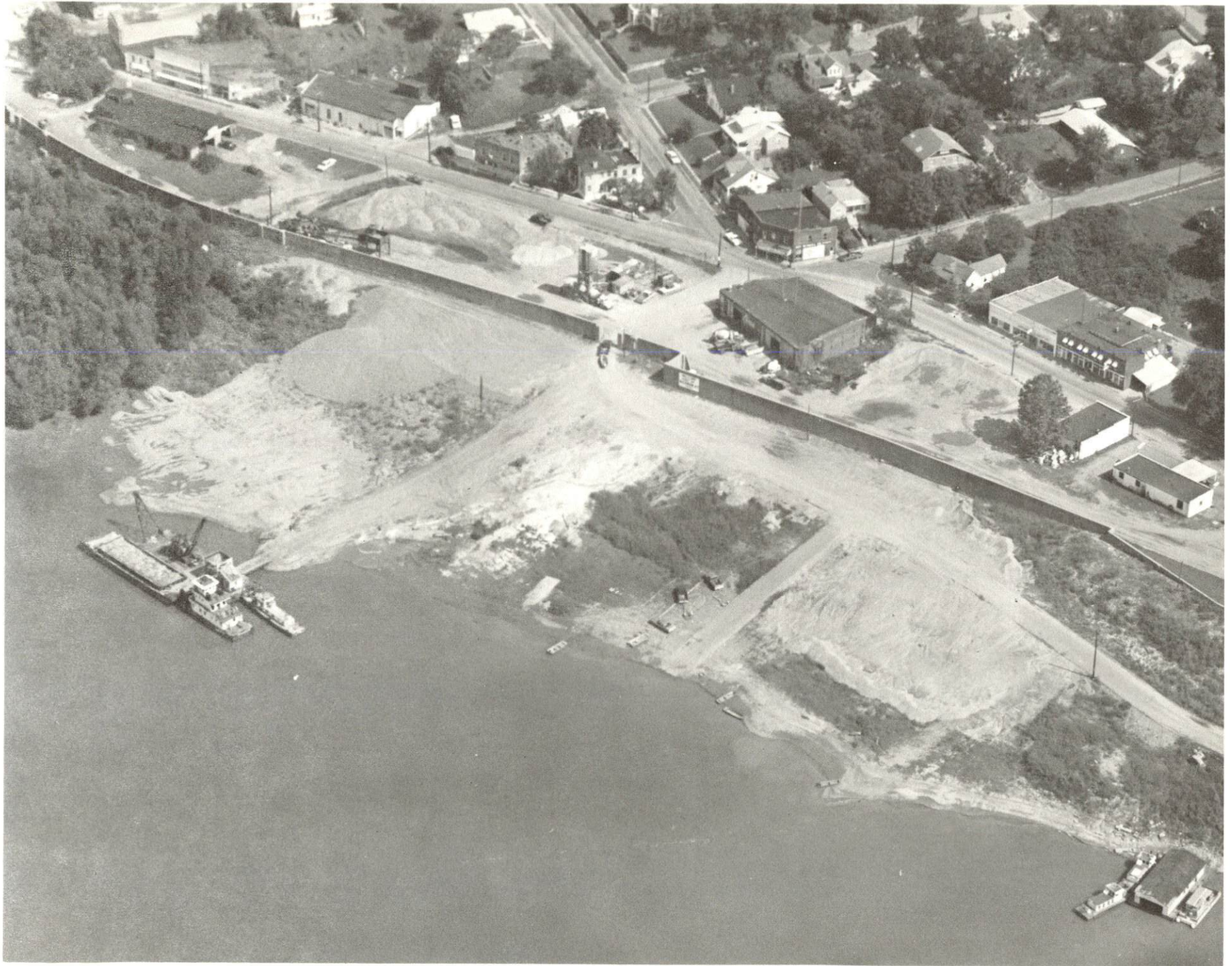
Air Freight Service: All commercial air carriers accept air freight on a space-available basis.

(Contd.)

Nearest Small Craft

	Fulton Municipal Airport*
Location:	Fulton, 20 miles east of Hickman
Runways:	1 paved
Length:	2,600 feet
Traffic	
Control:	Wind sock
Lighting:	Runway lights sunset to sunrise

*An expansion of the airport is planned. The Master Plan includes three phases of development: PHASE I includes expanding the existing runway to 4,000 feet and acquiring all land necessary to expand the runway to 5,000 feet; the installation of additional lights; the addition of a radio nondirectional beacon; and the installation of a light beacon. PHASE II calls for future widening and expansion of the runways and for an additional building to provide better facilities. PHASE III will include the expansion of the runway to 5,000 feet. This is a joint venture between the City of Fulton, Fulton County, and South Fulton, Tennessee. These have cooperated in forming a tri-government agency, the Ken-Tenn Airport Board. The Board is in the process of acquiring land for PHASE I.



HICKMAN RIVERFRONT PROPERTY

Taxi - One company, 24-hour service

Water

The Mississippi River bounds Hickman on the west and has port facilities available for barges.

Hickman Harbor, a still water port on the Mississippi River, has private unloading facilities, 24-hour tow service, 24-hour food and provision service, fresh water and refueling service for the large freight boats and barges that serve the area. Hickman is a headquarters for the U. S. Coast Guard, serving an area of 190 miles up and down the river. The harbor is also the home base of the Coast Guard Cutter Chippewa.

The Lattus Ready-Mix Company operates a river dredge and a sand and gravel company adjacent to the harbor. The Bunge Corporation has a million bushel capacity grain terminal and the Fulton County Grain Company also has a grain terminal. Stokes Oil Company has a 2.5 million gallon capacity oil terminal. Turnbow's boat service provides 24-hour food and provision service. All of these are located on the Hickman Harbor.

The Hickman-Fulton County Riverport Authority expects to open a \$1,300,000 general cargo facility within the Hickman Harbor. The facility is to be constructed on approximately 15 acres of land adjoining the harbor, and will include loading and unloading of dry or bulk cargo including grain, fertilizer and coal; 10,000 square feet of enclosed warehouseing; 10,000 square feet of sheltered storage space; a 20-ton crane; four mooring cells; an enclosed belt conveyor capable of traveling 550 feet a minute; a fork lift with a capacity of 30 tons; and miscellaneous yard equipment.

POWER AND FUEL

Electricity

Company serving Hickman - Hickman Electric System

Source of power - Tennessee Valley Authority

Total generating capacity - 26,723,430 KW

For industrial rates contact:

South Kentucky Industrial Development

Association, Inc.

Post Office Box 726

Hopkinsville, Kentucky 42240

(502) 885-5392

and/or

Hickman Electric System

Post Office Box 230

Hickman, Kentucky 42050

(502) 236-2535

Company serving Fulton County - Hickman-Fulton Counties ECC

Source of power - Tennessee Valley Authority

Total generating capacity - 26,723,430 KW

For industrial rates contact:

South Kentucky Industrial Development

Association, Inc.

Post Office Box 726

Hopkinsville, Kentucky 42240

(502) 885-5392

and/or

Hickman-Fulton Counties ECC

Post Office Box 190

Hickman, Kentucky 42050

(502) 236-2521

Natural Gas

Company serving Hickman - Hickman Natural Gas System
Source of supply - Trunkline Gas Company
Size of transmission mains - 30-inch (supplier); 4-inch (distributor)
Distribution mains - 4, 2, 1, and 3/4 inches
Distribution pressure - 30 psi
Btu content - 1,020 per cubic foot
Specific gravity - .60
For rates and supplies contact:

Hickman Natural Gas System
Post Office Box 230
Hickman, Kentucky 42050
(502) 236-2535

Other Fuels

Propane (within 20 miles)

Busby LP Gas
Hickman, Kentucky 42050

Texgas
Union City, Tennessee 38261

Tri-State Gas and Appliance Company, Inc.
Jefferson Street
Clinton, Kentucky 42031

Ugite LP Gas Service
603 West Highland Drive
Fulton, Kentucky 42041

(Contd.)

Fuel oils

Distillate fuel oil - (within 20 miles)

Brown's Phillips 66 Service Station
Highway 239 S.
Cayce, Kentucky 42041

Fields & Piatt Oil Company
Middle Road
Fulton, Kentucky 42041

Pipeline Oil Company
602 West State Line
Fulton, Kentucky 42041

Ralph Puckett Oil Company
Union City Highway
Fulton, Kentucky 42041

Standard Oil Company
Terry Road
Fulton, Kentucky 42041

Stokes Oil Company, Inc.
Highway 94 W.
Hickman, Kentucky 42050

Sun Oil Company - DX Products
Union City Highway
Fulton, Kentucky 42041

Residual fuel oil - Arrangements must be made with the refinery.

Low sulphur content coal - Available in Kentucky.

WATER AND SEWERAGE

Water

Company serving Hickman - Hickman Water and Sewer System*
Post Office Box 230
202 Jackson Street
Hickman, Kentucky 42050
(502) 236-2535

Source - 2 deep wells
Treatment plant capacity - 2,500,000 gallons per day
Average daily consumption - 950,000 gallons
Peak daily consumption - 1,500,000 gallons
Type treatment - Filtration, chlorination
Storage capacity - 700,000 gallons
Size lines - 8, 6, 4, 3, 2 1/2, and 2 inches
Average pressure - 90 psi
Average temperature - 67 degrees F.

(Contd.)

*The City of Hickman has awarded a contract for the development of an overall, 20-year improvement plan for the city's water system. This will entail a comprehensive analysis of the city's water distribution, treatment, storage, and rate structure. The city also plans an upgrading of fire plug connections so that all fire plugs will be connected to 6-inch water mains. This will require the installation of approximately 18,000 feet of 6-inch main. Tentative plans call for the addition of more elevated storage capacity and for possibly drilling a new well if increased supply is needed in the future.

MONTHLY WATER RATES FOR WHOLESAL
AND INDUSTRIAL CONSUMERS

Inside City Limits

First	2,000 gallons	\$3.25 (Minimum)
Next	8,000 gallons	.95 per M gallons
Next	15,000 gallons	.75 per M gallons
Next	25,000 gallons	.65 per M gallons
Next	50,000 gallons	.54 per M gallons
Next	100,000 gallons	.40 per M gallons
All over	200,000 gallons	.20 per M gallons

A \$.50 surcharge is added to all bills.

Areas outside the city limits and not part of the
Hickman Rural Water Extension pay 150% of
inside city limits rate plus \$.50 surcharge.

Tap-on charge:

Inside city limits	\$ 60
Hickman Rural Water Extension and areas outside city limits	\$150

Name of water district - Hickman Rural Water Extension
operated by the
Hickman Water and Sewer System
Post Office Box 230
202 Jackson Street
Hickman, Kentucky 42050
(502) 236-2535

Area served - Highway 125 south of Hickman; Highway 309 southwest
of Hickman

Date when water district began operating - 1972

Source of supply of treated water - directly connected to the city of
Hickman water supply

Average amount of water used in a 24-hour period - 25,000 gallons

Storage capacity - 50,000 gallons

Average pressure - 50 psi

Average temperature - 67 degrees F.

Size lines - 8, 6, 4, 3, 2 1/2, and 2 inches

Rates -

First	2,000 gallons	\$8.00 (Minimum)
Next	8,000 gallons	1.75 per M gallons
Next	15,000 gallons	0.975 per M gallons
Next	25,000 gallons	0.750 per M gallons
Next	50,000 gallons	0.675 per M gallons
Next	100,000 gallons	0.300 per M gallons
All over	200,000 gallons	0.150 per M gallons

Tap-on charge: \$150

Name of water district - Southwestern Kentucky Water District
c/o Hickman-Fulton Counties ECC
Post Office Box 190
Hickman, Kentucky 42050
(502) 236-2521

Area served - Portions of Fulton and Hickman Counties
Date when water district began operating - August 1971
Source of supply of treated water - Fulton Utility System
Average amount of water used in a 24-hour period - 32,622 gallons
Storage capacity - 200,000 gallons
Average pressure - 55 to 70 psi
Size lines - 6, 4, 3, and 2 inches
Rates -

First	2,000 gallons	\$5.00 (Minimum)
Next	5,000 gallons	1.25 per M gallons
Next	5,000 gallons	.90 per M gallons
Next	8,000 gallons	.70 per M gallons
Next	10,000 gallons	.60 per M gallons
Next	20,000 gallons	.50 per M gallons
All over	50,000 gallons	.40 per M gallons

Tap-on charge: \$150

Surface water sources - Mississippi River, Obion Creek and
Bayou de Chien
Average discharge - Bayou de Chien near Clinton, 97.2 cfs
(36-year record, USGS)
Expected ground water yield - 500 to 1,000 gpm over the entire county

Sewerage

Company serving Hickman - Hickman Water and Sewer System*
Post Office Box 230
202 Jackson Street
Hickman, Kentucky 42050
(502) 236-2535

Design flow rate** - East lagoon - 160,000 gpd
West lagoons- 160,000 gpd

Average daily flow** - East lagoon - 151,200 gallons
West lagoons- 158,400 gallons

Treatment - Lagoon system
Treated effluent discharged into - Mud Creek
Size of sanitary mains - 6, 8, 10, and 12 inches
Size of storm mains - 10, 12, 18, and 36 inches
Rates - 50 percent of monthly water bill (not including surcharge)
Tap-on charge: \$150

*A 201 Facilities Study of the Hickman sewerage system is now under-way. Phase I, a general study and analysis of need, is scheduled for completion in the Spring of 1977. Completion of Phase II, design and specification, is scheduled for the Fall of 1977, with Phase III, actual construction, beginning in 1979.

**Source: Kentucky Department for Natural Resources and Environmental Protection.

CLIMATE

Fulton County

Temperature

Annual mean (30-year record)	59.4 degrees
Average annual 1975	59.8 degrees
Record highest, July, 1954 (33-year record)	104 degrees
Record lowest, January, 1963 (33-year record)	-5 degrees
Normal heating degree days (30-year record) (Heating degree day totals are the sums of negative departures of average daily temperatures from 65 degrees F.)	3,833

Precipitation

Mean annual total (30-year record)	47.12 inches
Mean annual snowfall (34-year record)	9.40 inches
Total precipitation 1975	57.02 inches
Mean number days precipitation (.01 inch or more) (33-year record)	115
Average number days thunderstorms (22-year record)	53

Prevailing Winds (22-year record)

Southwest

Relative Humidity (22-year record)

6 a. m.	82 percent
12 noon	59 percent

Source: U. S. Department of Commerce, Environmental Science Services Administration, Climatological Data, 1975. Station of record: Cairo, Illinois.

LOCAL GOVERNMENT

City

Structure - Mayor - 4-year term; 4 commissioners - 2-year terms;

City manager

Budget 1977 - General Fund	\$328,721
Water and Sewer Fund	282,000
City Gas System	564,000

Fees and licenses - Occupational licenses for businesses vary from \$7.50 to \$410 per year; payroll license tax of one percent on wages; city auto stickers are \$10 per car per year.

County

Structure - County Judge - 4-year term; 4 magistrates - 4-year terms

Budget - 1976-77 - General Fund \$143,343; Road Fund \$76,000

Assessed Value of Property, 1976

<u>Classes of Property</u>	<u>Hickman</u>	<u>Fulton County</u>
Real Estate	\$8,453,547	\$60,820,903
Tangibles	4,453,114	14,734,973

Property Taxes

All property in Kentucky is assessed at 100 percent of fair cash value.

Land and buildings are taxed by the state and may be taxed by local jurisdictions. The state rate is \$0.315 per \$100 of assessed valuation. Beginning January 1, 1977, local school tax rates were reduced by \$0.30 per \$100 valuation and the state rate was increased by \$0.30 per \$100 (from \$0.015), resulting in no net change in the combined state and local rates.

Manufacturing machinery, raw materials inventories, pollution control equipment, and goods in the process of manufacture are not subject to local taxation. The state rate is \$0.15 per \$100.

Other tangible personal property owned by manufacturers (automobiles, trucks, finished goods, office furniture, office equipment) is taxed by the state at \$0.45 per \$100 and may be taxed by local jurisdictions. Beginning January 1, 1977, local school rates were reduced by \$0.30 per \$100 valuation and the state rate was raised by \$0.30 per \$100 (from \$0.15).

(Contd.)

Property stored in public warehouses in a transit status is not subject to local taxation. The state rate is only \$0.015 per \$100.

Intangible personal property located in Kentucky (money in hand, shares of stock, notes, bonds, accounts, and other credits) is taxed by the state at \$0.25 per \$100, and is not subject to local taxation.

Intangible personal property owned by corporations in Kentucky as a result of business transactions performed out-of-state, but having a tax situs in Kentucky (accounts receivable, notes, bonds, credits, non-domestic bank deposits, licensing or royalty agreements, shares of stock of any affiliated company, etc.) is taxed by the state at \$0.015, and is not subject to local taxation.

Local Property Tax Rate Per \$100 of Assessed Valuation, 1976*

<u>Taxing Jurisdiction</u>	<u>Hickman</u>	<u>Fulton County</u>
County	\$.236	\$.236
School	.460	.460
City	.321	

Special (not county wide): Soil Conservation \$.001

Utilities Gross Receipts Tax For Schools

A 3 percent tax is levied on utilities receipts for schools in the Fulton County School System. Tax is paid by all consumers of utilities as an add-on to the utilities bills. Exempted are receipts from utilities services that are resold and the receipts from the sale of energy or energy producing fuels that exceed 3 percent of the cost of production in manufacturing, processing, mining or refining.

Planning and Zoning

City agency - City of Hickman Planning Commission

Subdivision regulations enforced - City and five miles beyond city limits

Local codes enforced - Building

Mandatory state codes enforced - Plumbing, National Fire Protection Association Code, National Building Code (for major buildings and residential construction containing more than 12 bedrooms per building)

*Kentucky Department of Revenue, Kentucky Property Tax Rates, 1976.

Safety

<u>Police</u>	<u>Hickman</u>	<u>Fulton County</u>
Total staff	7	4 full-time 4 part-time
Radio-patrol cars	2	6

Fire

American Insurance Association Fire Rating	7
Full-time staff	4
Volunteers	15

Rescue Service

Hickman Rescue Squad:

Number of volunteers - 25

Equipment - Boat and motor, dragging equipment, oxygen, generator, lights, radios, basic rescue equipment

Personnel training - Advanced and standard first aid. Most members are also volunteer firemen and have received training in fire fighting.

Solid Waste

	<u>Hickman</u>	<u>Fulton County</u>
Type service	Municipal	Private
Fee charged:		
residential	\$3.25 per month*	\$3.25 per month*
business	By contract	By contract
industrial	By contract	By contract
Collection frequency:		
residential	Once weekly	Once weekly
business	As required	As required
industrial	As required	As required
Trash pickup	As needed	As needed
Disposal method	Sanitary landfill	Sanitary landfill

*Fee for residents on a fixed income is \$1.75 per month.

EDUCATION

Public Schools

Fulton County

Total Enrollment (January 1977)	1,366
Elementary	1,012
High School	354
Student-Teacher Ratio	20-1
Elementary	20-1
High School	18-1
Percent High School Graduates to College	48.1
Expenditures Per Pupil (1975-76)	\$726.81
Bonded Indebtedness, June 30, 1976	\$919,000

Area Colleges and Universities

<u>Name</u>	<u>Location (Miles distant)</u>	<u>Enrollment (Fall, 1976)</u>	<u>Highest Degree Conferred</u>
University of Tennessee	Martin, Tennessee (34)	3,945*	Academic & Professional
Murray State University	Murray (55)	7,394	Masters, Ph. D. **
Bethel College	McKenzie, Tennessee (58)	264	Baccalaureate
Paducah Community College	Paducah (67)	1,302	Associate
Southeast Missouri State University	Cape Girardeau, Missouri (74)	7,417	Academic & Professional

*Full-time equivalency total based on 12 credit hours.

**Cooperative program with the University of Kentucky, Lexington, for a Ph. D. in education only.

Vocational Schools

Nearest State School

Location	West Kentucky State Vocational- Technical School
Miles Distant	Paducah
Curriculum	67
	Business and Office Occupations
	Accounting Jr. Management
	Clerical
	Secretarial
	Consumer and Home Economics
	Commercial Foods
	Health and Personal Service Occupations
	Barbering
	Cosmetology
	Industrial Education
	Architectural Drafting
	Appliance Repair
	Auto Body Repair and Painting
	Auto Mechanics
	Carpentry
	Electronics
	Industrial Electricity
	Masonry
	Tailoring
	Learning Resource Center

(Contd.)

Nearest Area Education Center

Location	Fulton County Area Vocational Education Center
Curriculum	Hickman Business and Office Occupations Accounting Jr. Management Clerical Secretarial Industrial Education Auto Mechanics Carpentry Industrial Electricity Welding

Arrangements can be made to provide training in the specific production skills required by an industrial plant. Instruction may be conducted either in the vocational school or in the industrial plant, depending upon the desired arrangement and the availability of special equipment.

HEALTH

Local Medical Personnel

Physicians - 1
Dentists - 1

Hospitals

<u>Nearest General Hospital</u>	<u>Location</u>	<u>Beds</u>
Obion County General Hospital	Union City, Tennessee, 13 miles from Hickman	173

General hospital facilities and services - Emergency room, operating room, coronary care unit, intensive care unit, obstetrics, pharmacy, laboratory, radiology, nuclear medicine, EKG, physical therapy, respiratory therapy, recovery therapy

Medical staff - 21 medical doctors on active staff, 12 medical doctors on consulting staff, 59 registered nurses, 63 licensed practical nurses

There are two general hospitals located in Fulton, Kentucky, 20 miles east of Hickman, with a combined bed capacity of 71.

Ambulance Service

Name - Fulton County Ambulance Department
Staff - 8 Emergency Medical Technicians
Service - 24-hour, county wide
Equipment - One fully equipped ambulance

Public Health

Facility - Fulton County Health Center
Staff - Nurse, sanitarian, clerk. In addition, a registered nurse, a licensed practical nurse, a clerk and an aide work in home health services.

OTHER LOCAL FACILITIES

Communications

Telephone - South Central Bell Telephone Company
Services - Standard

Telegraph - Western Union
Services - By telephone

Postal - U. S. Post Office
Class - Second
Mail received - Once daily
Mail dispatched - Once daily

Newspapers - Hickman Courier
Weekly and circulation - 2,250
Other papers received from - Fulton, Louisville, and Paducah,
Kentucky; Memphis and Union City,
Tennessee

Radio -
Stations received from - Fulton, Paducah, and Mayfield, Kentucky;
McKenzie and Union City, Tennessee;
Cairo, Illinois

Television -
Cable service
Reception from - Paducah, Kentucky; Cape Girardeau and St. Louis,
Missouri; Carbondale, Illinois; Memphis,
Tennessee
Kentucky Educational Television - Murray transmitter, Channel 21

Library Services

Public Library - Hickman Public Library (A branch of the Fulton County
Library Board)
Size collection - 33,315 volumes*
Circulation, 1975-76* - 82,312 (libraries), 60,069 (bookmobile),
142,381 (total)
Services - Bookmobile, magazines, movie projector, films, records,
pictures, reading program, story hour, book displays, meeting
room, reference services, interlibrary loans, special programs for
organizations upon request, services to shut-ins, copying services.

*Total for Fulton County.

Religious Institutions

Number of churches - 15
Denominations - Catholic
Christian
Church of Christ
Church of God
Episcopal
Freewill Baptist
Holiness
Methodist
Missionary Baptist
Southern Baptist
The Church of Jesus Christ
United Methodist

Nearest Synagogues -
Congregations - Temple Israel (reform) at Paducah,
67 miles north
Jewish Center (reform) at Union City,
Tennessee, 15 miles from Hickman
(September through May)

Financial Institutions

<u>Banks</u>	<u>Assets</u>	<u>Deposits</u>	<u>Statement Date</u>
The Citizens Bank	\$12,200,000	\$11,050,000	12/31/76
<u>Savings and Loan Associations</u>	<u>Assets</u>	<u>Shared Accounts</u>	<u>Statement Date</u>
Hickman Federal Savings and Loan Association	\$3,918,990	\$3,576,163	11/30/76

Hotels and Motels

There are 8 motels and hotels with a total of 300 units in Union City, Tennessee, 15 miles south of Hickman, and 6 motels and hotels with a total of 178 units in Fulton, 20 miles east of Hickman.

Clubs and Organizations

Business and Civic - Chamber of Commerce, Jaycees, Riverport Authority, Hickman Development Corporation, Hickman Historical Society, Hickman Area Retail Merchants Association

Fraternal - American Legion, Masons

Women's - Eastern Star, American Legion Auxiliary, Mothers Club, Homemakers, Debutants

Youth - 4-H, FFA, FHA, FTA, FPLA, VICA

Other - Riding Club, Hickman Country Club, Fulton County Senior Citizens Club, Hickman Area Ministerial Alliance, Ky-Mo-Tenn CB Club

RECREATION

Local

Three public parks are located in Hickman. A recently completed park in east Hickman offers two tennis courts, a basketball court, two playgrounds, picnic area, public shelters and restrooms. Another park, located in west Hickman, contains a playground. Sanger Field at Fulton County High School contains two baseball diamonds and a football field. A riverfront park and a neighborhood park have been proposed for development.

A country club near Hickman offers private recreational facilities, including a 9-hole golf course, swimming pool, and tennis court.

Hickman, situated at the start of the Mississippi River delta, is located in a prime hunting and fishing area. The city contains a historic courthouse, numerous antebellum homes and buildings, and a unique footbridge. Other interesting features are factory tours and numerous Indian mounds and sites.

Annual events at Hickman include the Fourth of July "Spirit of America Celebration," featuring water festivities; the Summer Salute to Agriculture (sponsored jointly by the Fulton County-Hickman Chamber of Commerce and the Fulton-South Fulton Chamber of Commerce); and a Christmas festival, featuring a parade, Santa's arrival by boat, unique Christmas card lane, and other events. The International Banana Festival is held annually in Fulton, 20 miles east of Hickman.

Area (Within 75 miles)

Reelfoot Lake and the Kentucky Bend are approximately 24 miles from Hickman. Reelfoot Lake is a 70-square mile lake in Kentucky and Tennessee known for its fishing. Kentucky maintains a 2,000-acre wildlife area near the lake for hunting. The Kentucky Bend is land totally separated from the state by the Mississippi River. Both lake and bend were created by fantastic earthquakes, 1811-12, the largest ever recorded in North America.

Columbus-Belmont Battlefield State Park, 27 miles away, contains 177 acres on a bluff overlooking the Mississippi River. The park offers camping, miniature golf, hiking trails, picnic shelter, playground, tables and grills, and snack bar, and features Civil War artillery, an anchor and chain used to stop Union boats, and a museum with battle diorama.

Horseshoe Lake Recreational Area is located 65 miles from Hickman in southern Illinois. Fort Massac State Park, also in Illinois, is 72 miles away.

Kenlake State Resort Park, 72 miles from Hickman on Kentucky Lake, offers full resort accommodations, cottages, camping, and recreational activities including swimming pool, sand beach, play-grounds, picnic area, trails, golf, tennis, horseback riding, boating, fishing, and summer entertainment at Kenlake Amphitheatre.

The Land Between the Lakes, located on a 170,000-acre wooded peninsula approximately 74 miles from Hickman, is an outdoor recreational and conservational education center. Camping, swimming, fishing, boating, hiking, a buffalo herd on a 250-acre range, Environmental Education Center for school study groups, an educational farm and a center station with films and displays are offered.

Kentucky Dam Village State Resort Park, 75 miles distant on Kentucky Lake, offers full resort accommodations, cottages, and camping. Park features include swimming pool, beach and bathhouse, miniature golf, picnic area, playground, horseback riding, fishing, boating, tennis, golf, and ski boat and car rentals.

COMMUNITY IMPROVEMENTS

Recent:

1. The local Chamber of Commerce has been reorganized as a result of the three-year Bicentennial celebration. The Hickman Chamber of Commerce was expanded to include Fulton County. The new Fulton County-Hickman Chamber of Commerce has joined both the Kentucky and the United States Chambers of Commerce.
2. Several businesses have recently begun or expanded operations. A new company, the Hickman Harbor Service, offers mooring cells and other services to barge lines. The Roper Pecan Company has expanded operations and acquired a new building. The Coffey Construction Company has acquired and remodeled the old national guard armory and is now using the building for its offices. Another expansion of the Graphite Products Division of the Carborundum Company has been completed. The Bunge Corporation, the third largest grain exporter in the world, has doubled the grain storage capacity at its terminal in Hickman Harbor.
3. A new \$500,000 National Guard Armory has been completed.
4. A 750-gpm pumper has been purchased for the Fire Department. Also, a new wing has been added to the building housing the Fire Department and will be used to store the Hickman Rescue Squad's equipment.
5. A new \$160,000 library building has been constructed and the Hickman Public Library has added a new bookmobile.
6. A 48-unit apartment complex has been completed.
7. A public park located in east Hickman has recently been completed. The park contains two tennis courts, a basketball court, two playgrounds, picnic area, public shelters and restrooms.
8. A new elementary school has been constructed near Hickman by the Fulton County School System and is now in use.
9. A \$50,000 street reconstruction program has been completed by the City.

Underway:

1. A 201 Facilities Study of the Hickman sewerage system is now underway. Phase I, a general study and analysis of need, is scheduled for completion in the Spring of 1977. Completion of Phase II, design and specification, is scheduled for the Fall of 1977, with Phase III, actual construction, beginning in 1979.

Planned:

1. The Hickman-Fulton County Riverport Authority expects to open a \$1,300,000 general cargo facility within the Hickman Harbor. The facility is to be constructed on approximately 15 acres of land adjoining the harbor, and will include loading and unloading of dry or bulk cargo including grain, fertilizer and coal; 10,000 square feet of enclosed warehousing; 10,000 square feet of sheltered storage space; a 20-ton crane; four mooring cells; an enclosed belt conveyor capable of traveling 550 feet a minute; a fork lift with a capacity of 30 tons; and miscellaneous yard equipment.
2. The City of Hickman is beginning to make plans for an industrial park to be located near the new harbor facility.
3. The City of Hickman has awarded a contract for the development of an overall, 20-year improvement plan for the city's water system. This will entail a comprehensive analysis of the city's water distribution, treatment, storage, and rate structure. The city also plans an upgrading of fire plug connections so that all fire plugs will be connected to 6-inch water mains. This will require the installation of approximately 18,000 feet of 6-inch main. Tentative plans call for the addition of more elevated storage capacity and for possibly drilling a new well if increased supply is needed in the future.
4. "Operation Townlift" is the planned remodeling of several Hickman businesses along a river town theme. A steering committee - composed of representatives of business, government, and the Chamber of Commerce - has been formed, a color scheme adopted, and plans drafted for the remodeling of a core group of three downtown businesses. One of these businesses has already been remodeled and work on the other two will begin shortly. Also as part of "Operation Townlift" the Tennessee Valley Authority is developing plans to improve downtown parking, restroom facilities, and streets and sidewalks.

5. A committee of the Chamber of Commerce has begun work on developing a landing strip to serve Hickman's agricultural industries. Land for the strip has been donated and plans are now being drafted.
6. A new zoning ordinance has been drafted and proposed to the City Commission for adoption. The ordinance lays out business, industrial, and residential zones within the city. The City of Hickman has been actively attempting to plan and encourage growth.
7. The City of Hickman and the Fulton County Area Vocational Center youth organizations plan to renovate a footbridge connecting two parts of the city.
8. Other projects tentatively planned by the City of Hickman include the development of a riverfront park and a neighborhood park; acquisition of low-income housing and relocation of occupants; establishment of a housing rehabilitation program; construction of low-income housing; construction of Section 8 housing; construction of flood control project; hiring of a city planner; renovation of community center; development of industrial park; addition to fire station; construction of municipal services building; delapidated housing clearance; construction of public works maintenance facility; street, curb and gutter improvements; harbor improvements and extensions; and installation of storm drain system.

Production supervisor: Patsy Wallace; research: David Wellman;
clerical: Linda Fint; graphics: N. C. Montague, Frank Ferrante,
Tony Cecconi, Richard Spencer; cartography: Industrial Development
Division. Cost of printing paid from state funds.

**Kentucky Department of Commerce
Capital Plaza Tower
Frankfort, Kentucky 40601**

**Industrial Development Division
(502) 564-7140**

**Community Services Division
(502) 564-4300**

**Business Development Division
(502) 564-3862**

**Research and Planning Division
(502) 564-4886**

**Office of Minority Business Enterprise
(502) 564-4270**

**Map Sales Office
133 Holmes Street
(502) 564-4715**

**International Trade & Investment
Promotion Division
(502) 564-2170**

**Agri-Business Division
(502) 564-7140**

**Industrial Development Finance Authority
(502) 564-4554**