

1981

Industrial Resources: Gallatin County - Warsaw

Kentucky Library Research Collections
Western Kentucky University, spcol@wku.edu

Follow this and additional works at: https://digitalcommons.wku.edu/gallatin_cty

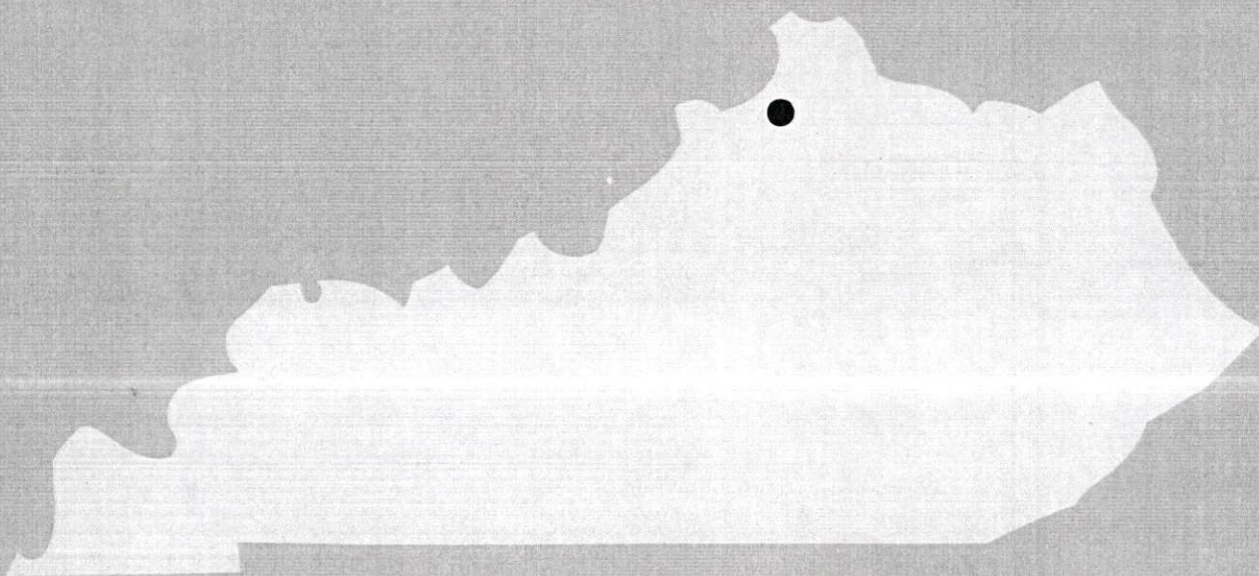
 Part of the [Business Administration, Management, and Operations Commons](#), [Growth and Development Commons](#), and the [Infrastructure Commons](#)

Recommended Citation

Kentucky Library Research Collections, "Industrial Resources: Gallatin County - Warsaw" (1981). *Gallatin County*. Paper 15.
https://digitalcommons.wku.edu/gallatin_cty/15

This Report is brought to you for free and open access by TopSCHOLAR®. It has been accepted for inclusion in Gallatin County by an authorized administrator of TopSCHOLAR®. For more information, please contact topscholar@wku.edu.

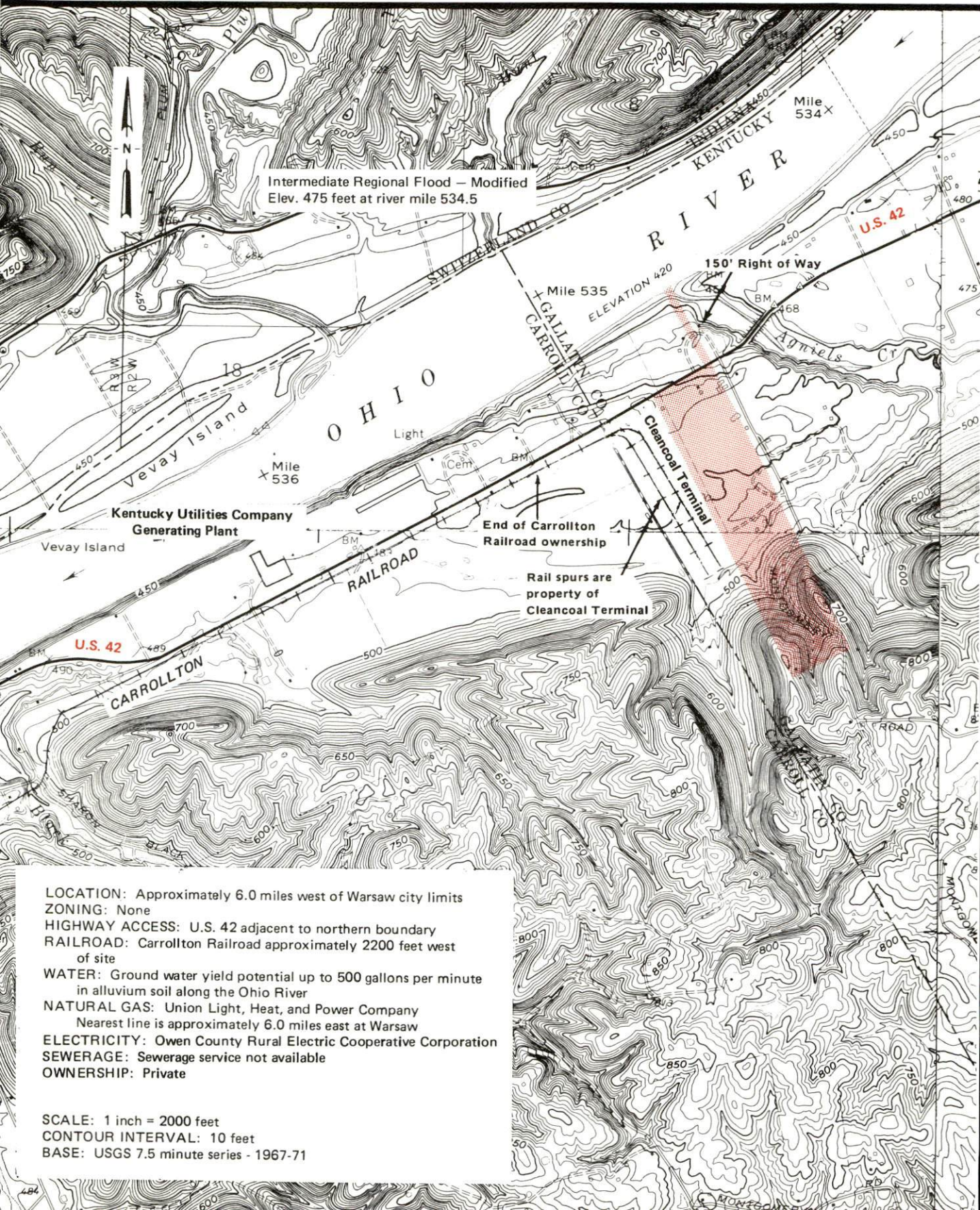
A comprehensive
report on
Warsaw, Ky.



KENTUCKY & CO.
The state that's run like a business.

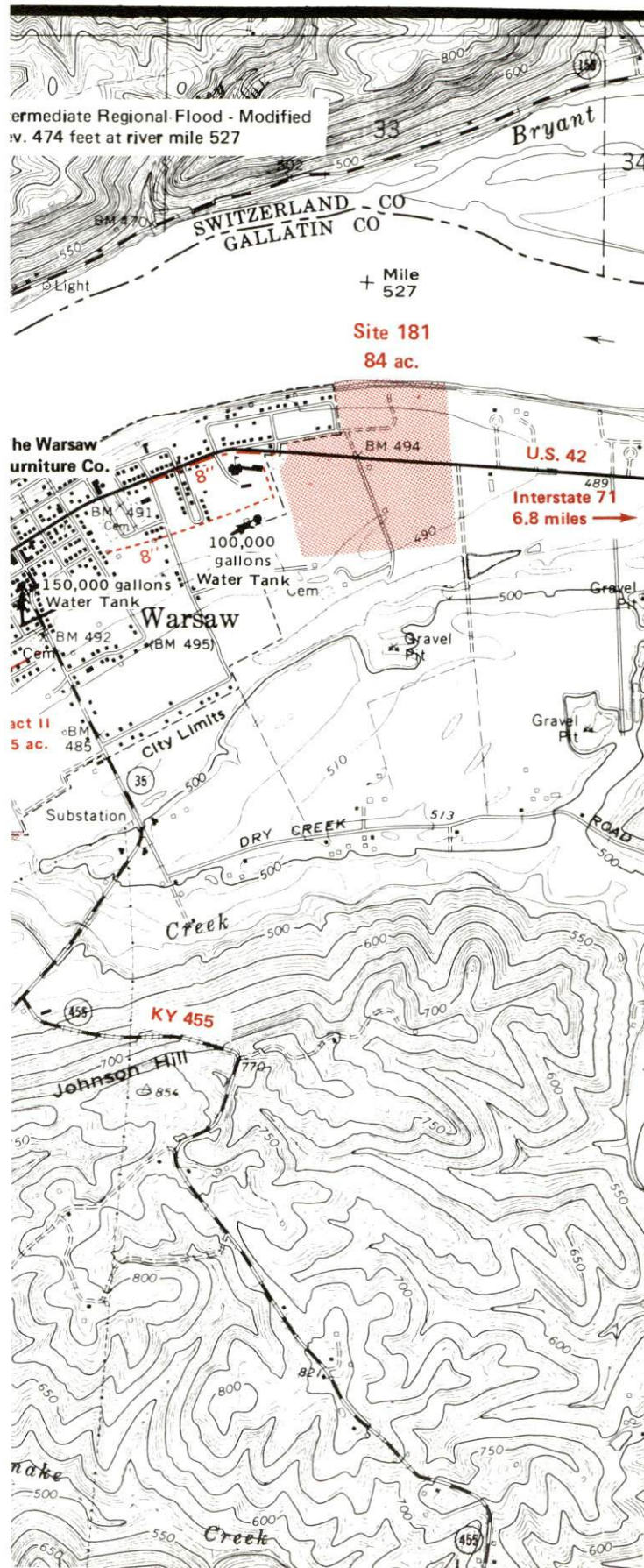
WARSAW, KENTUCKY --- Site 381 --- 112 Acres

For more information contact Mr. Daniel Webster, Route 1, Warsaw, Kentucky 41095, or the Kentucky Commerce Cabinet, Office of Industrial Development, New Industries Division, Capital Plaza Tower, Frankfort, Kentucky 40601.



WARSAW, KENTUCKY

Industrial Sites --- 1981



A COMPREHENSIVE REPORT ON
WARSAW, KENTUCKY

Prepared by
The Kentucky Department of Commerce
Division of Research and Planning
in Cooperation with
The City of Warsaw

1981

Program manager - Brenda Roberts; research - John McMurray; clerical - Linda Fint, Annette Mitchell; graphics - Frank Ferrante, Tony Cecconi, Jimmy Thompson; cartography - Site Evaluation Section, Division of New Industries. Cost of printing paid from state funds.

TABLE OF CONTENTS

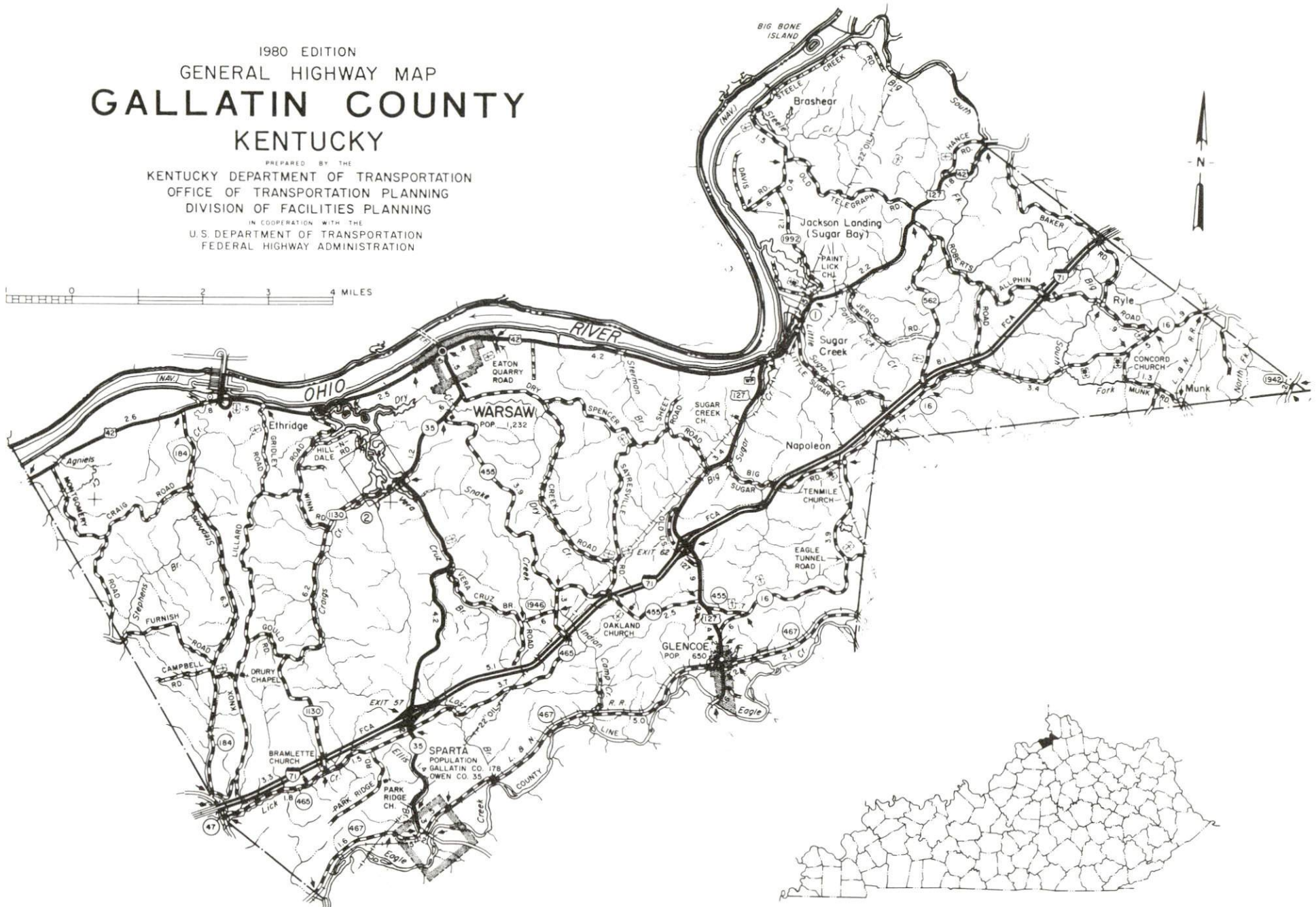
<u>Chapter</u>	<u>Page</u>
INDUSTRIAL SITES	i
THE LABOR MARKET AREA	1
Population	1
Labor Force Characteristics of Residents, 1980	1
Estimated Male Labor Supply	2
Estimated Female Labor Supply	2
Warsaw Manufacturing Firms, Their Products and Employment	3
Labor Organizations in Manufacturing Firms	3
Industrial Services	3
Average Weekly Wages by Industry, by Place of Work, 1979	4
Per Capita Personal Income	6
TRANSPORTATION	7
Rail	7
Highways	7
Truck Service	8
Air	10
Bus	11
Rental Services	11
Water	11
POWER AND FUEL	12
Electricity	12
Natural Gas	13
Other Fuels	13
WATER AND SEWERAGE	14
Water	14
Sewerage	15
CLIMATE	16

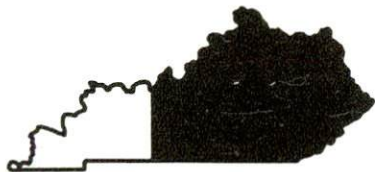
<u>Chapter</u>	<u>Page</u>
LOCAL GOVERNMENT	17
City	17
County	17
Assessed Value of Property, 1980	17
Property Taxes	17
Combined State and Local Rates Per \$100 Valuation, 1980 . .	18
Planning and Zoning	18
Safety	19
Police	19
Fire	19
Rescue Service	19
Refuse Collection and Disposal	20
EDUCATION	21
Public Schools	21
Nonpublic Schools	21
Area Colleges and Universities	22
Vocational Schools	23
HEALTH	25
Local Medical Personnel	25
Hospitals	25
Ambulance Service	25
Public Health	25
OTHER LOCAL FACILITIES	26
Communications	26
Library Services	26
Religious Institutions	27
Financial Institutions	27
Hotels and Motels	27
Clubs and Organizations	27
RECREATION	28

1980 EDITION
GENERAL HIGHWAY MAP
GALLATIN COUNTY
KENTUCKY

PREPARED BY THE
KENTUCKY DEPARTMENT OF TRANSPORTATION
OFFICE OF TRANSPORTATION PLANNING
DIVISION OF FACILITIES PLANNING
IN COOPERATION WITH THE
U.S. DEPARTMENT OF TRANSPORTATION
FEDERAL HIGHWAY ADMINISTRATION

0 1 2 3 4 MILES

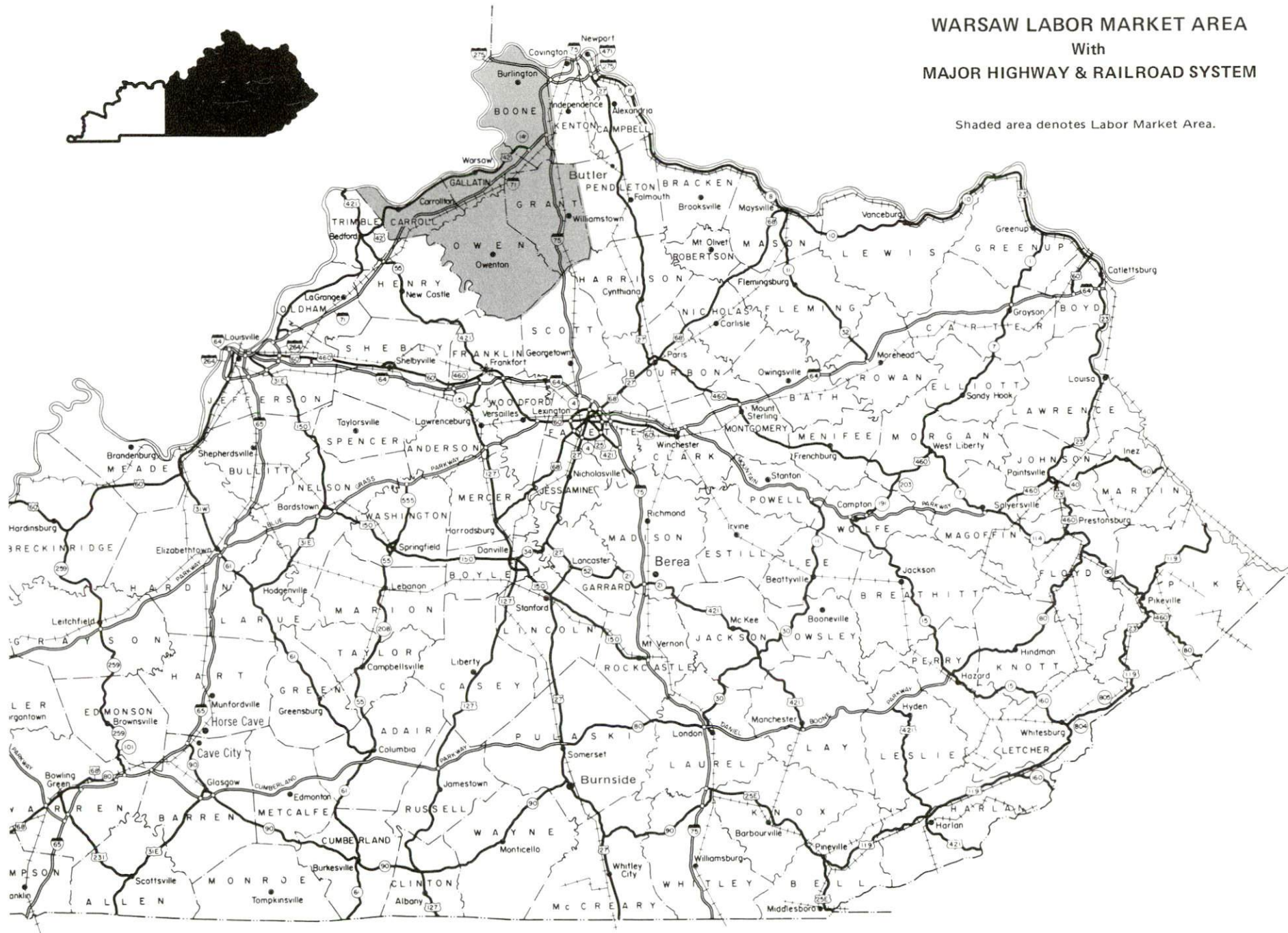




WARSAW LABOR MARKET AREA

With
MAJOR HIGHWAY & RAILROAD SYSTEM

Shaded area denotes Labor Market Area.



THE LABOR MARKET AREA

The Labor Market Area includes Gallatin County and the adjoining Kentucky counties of Boone, Carroll, Grant, and Owen.

Area	POPULATION		
	1980	1970	Percent Nonwhite
Warsaw	1,328	1,232	6.6
Labor Market Area	82,186	62,938	N/A
Gallatin County	4,842	4,134	2.7
Boone County	45,842	32,812	1.0
Carroll County	9,270	8,523	2.0
Grant County	13,308	9,999	0.4
Owen County	8,924	7,470	2.5

Note: The 1980 counts of population by race are provisional.

Source: U.S. Department of Commerce, Bureau of the Census, March 1981, as published in Special Report No. 8, State Data Center, Urban Studies Center, University of Louisville, March 1981.

LABOR FORCE CHARACTERISTICS OF RESIDENTS, 1980		
	Gallatin County	Labor Market Area
Civilian Labor Force	1,677	35,222
Employment	1,532	32,898
Agricultural	189	2,334
Nonagricultural	1,343	30,564
Unemployment	145	2,324
Rate of Unemployment (%)	8.6	6.6

Source: Kentucky Department for Human Resources, Kentucky Labor Force Estimates, Annual Averages, 1980.

ESTIMATED MALE LABOR SUPPLY
WARSAW LABOR MARKET AREA

Area	Current			Future	
	Total	Not in Labor Force	Unemployed	Under-employed	Reaching 18 years of age before 1986
Labor Market					
Area*	2,307	521	706	1,080	3,255
Gallatin	124	31	43	50	213
Boone	1,183	277	356	550	1,836
Carroll	311	61	110	140	425
Grant	366	87	109	170	455
Owen	323	65	88	170	326

*The labor supply will be supplemented by the number of male workers who are available for industrial jobs in the adjoining Indiana county of Switzerland. Additional workers may be drawn from other nearby counties.

Sources: Kentucky Department for Human Resources, Kentucky Labor Supply Estimates by County, 1979. Kentucky Department of Commerce, Future Labor Supply before 1986.

ESTIMATED FEMALE LABOR SUPPLY
WARSAW LABOR MARKET AREA

Area	Current			Future	
	Total	Not in Labor Force	Unemployed	Under-employed	Reaching 18 years of age before 1986
Labor Market					
Area*	2,221	206	645	1,370	3,137
Gallatin	162	12	40	110	189
Boone	1,169	108	321	740	1,795
Carroll	337	26	101	210	380
Grant	327	36	101	190	489
Owen	226	24	82	120	284

*The labor supply will be supplemented by the number of female workers who are available for industrial jobs in the adjoining Indiana county of Switzerland. Additional workers may be drawn from other nearby counties.

Sources: Kentucky Department for Human Resources, Kentucky Labor Supply Estimates by County, 1979. Kentucky Department of Commerce, Future Labor Supply before 1986.

Note: Not in Labor Force represents those persons who are not now in the labor force, but would enter the labor force if suitable employment were available. Unemployed persons are those persons who are unemployed and actively seeking work. Underemployed persons are those persons who are employed, but are working only 14 to 26 weeks per year.

WARSAW MANUFACTURING FIRMS,
THEIR PRODUCTS AND EMPLOYMENT

<u>Firm (Establishment date)</u>	<u>Product</u>	<u>Employment</u>		
		<u>Total</u>	<u>Male</u>	<u>Female</u>
Gallatin County Farm Supply, Inc. (1951)	Prepared animal feed	9	5	4
Gallatin County News (1880)	Newspaper	6	2	4
Sugar Creek, Inc. (1976)	Precast concrete	10	9	1
The Warsaw Furniture Company (1902)	Wood household furniture	24	10	14

Source: Kentucky Department of Commerce, Division of Research and Planning.

LABOR ORGANIZATIONS IN MANUFACTURING FIRMS

There are no labor unions representing manufacturing workers in Gallatin County at the present time.

INDUSTRIAL SERVICES

<u>Services</u>	<u>Location</u>	<u>Mileage from Warsaw</u>
Tool & Die, Machine & Pattern Shops	Erlanger, Kentucky	25
Metal Service Centers	Covington, Kentucky	38
Heat Treating	Cincinnati, Ohio	46
Metal Finishers	Covington, Kentucky	38
	Newport, Kentucky	39
Electric Motor Repair	Louisville, Kentucky	62

Source: Kentucky Directory of Selected Industrial Services, 1979.

AVERAGE WEEKLY WAGES BY INDUSTRY,
BY PLACE OF WORK, 1979

	<u>Gallatin County</u>	<u>Boone County</u>	<u>Carroll County</u>
All Industries	\$162.40	\$220.17	\$231.35
Mining & Quarrying	*	296.52	*
Contract Construction	*	237.58	377.83
Manufacturing	153.52	293.52	262.28
Transportation, Communications & Public Utilities	206.10	346.39	307.32
Wholesale & Retail Trade	124.18	142.44	143.37
Finance, Insurance & Real Estate	185.49	206.93	204.44
Services	156.65	176.36	149.96
Other	106.21	249.55	*

	<u>Grant County</u>	<u>Owen County</u>
All Industries	\$177.28	\$173.50
Mining & Quarrying	0	0
Contract Construction	146.68	185.34
Manufacturing	232.87	*
Transportation, Communications & Public Utilities	328.61	*
Wholesale & Retail Trade	151.33	146.06
Finance, Insurance & Real Estate	158.15	172.70
Services	168.21	161.10
Other	105.36	*

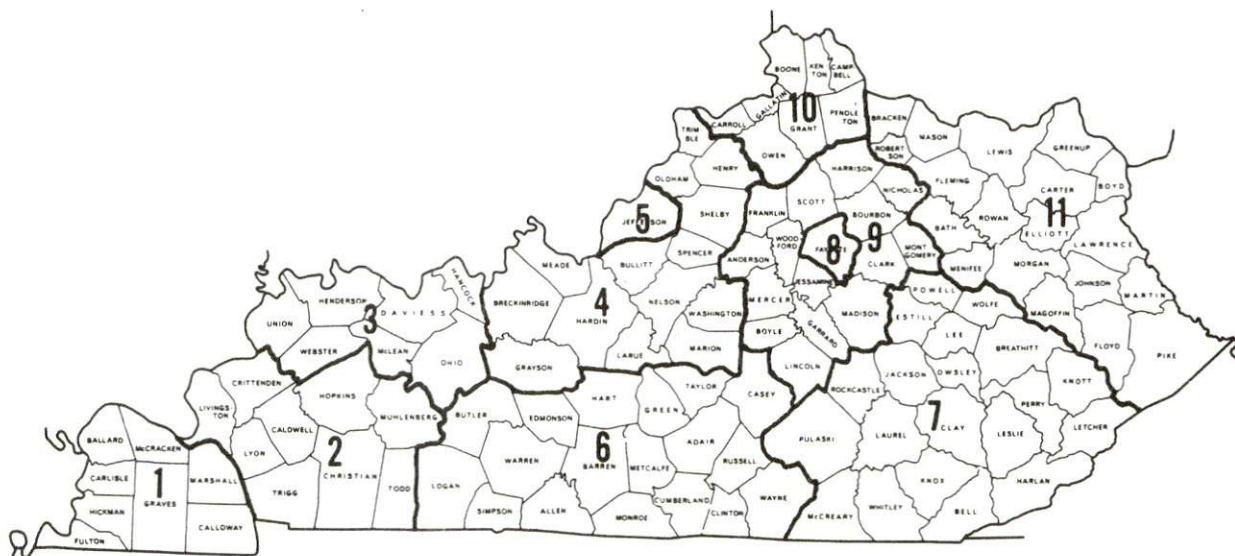
*Not disclosed.

Note: Excludes domestic workers, railway workers; certain nonprofit corporations; majority of federal government workers; and self-employed workers. Effective January 1, 1979, the Kentucky Unemployment Insurance Law extended coverage to include all state and local government agencies (shown in the Services category).

Source: Kentucky Department for Human Resources, Average Weekly Wages of Workers Covered by Kentucky Unemployment Insurance Law, 1979.

Occupational wage rates for specific industries are usually not available to most government agencies, and wage data furnished to state employment agencies by individual industrial employers is protected from disclosure by federal law. The most reliable up-to-date wage information can be obtained by direct contact with local employers.

Associated Industries of Kentucky, a voluntary organization of Kentucky businesses, regularly collects occupational wage rates and fringe benefits data from participating member firms. Data is compiled for over 127 clearly defined office, production, and service occupations. Tabulations are published for eleven regions of Kentucky, as shown on the map below. It should be noted that the data may be weighted by the preponderance of firms in the larger cities and may be somewhat higher than the rates paid in the smaller communities. Data from these tabulations are available, upon request, from the Kentucky Department of Commerce, Frankfort, Kentucky 40601.



Associated Industries of Kentucky Area Wage Surveys

PER CAPITA PERSONAL INCOME

<u>Area</u>	<u>1979</u>	<u>1975</u>	<u>Percent Change</u>
Gallatin County	\$5,377	\$3,813	41.0
Labor Market Area Range	\$5,377 - 8,126	\$3,813 - 5,189	N/A
Kentucky	7,377	4,882	51.1
U.S.	8,757	5,861	49.4

Source: U.S. Department of Commerce, Bureau of Economic Analysis,
April 1981.

TRANSPORTATION

Rail

Line serving Warsaw - The nearest Louisville & Nashville Railroad is located at Sparta, about 10 miles south of Warsaw.

Services - Main line route with 1 northbound freight making a daily stop; 3 northbound and 3 southbound through freights daily; switching facilities; team track space for 5 cars; siding space for 15 cars. Piggyback facilities are maintained by the Louisville and Nashville Railroad, the Southern Railway System, and the Chessie System at Cincinnati, Ohio, 46 miles distant.

For details on routing, schedules, rates, and services, contact:

Director of Industrial Development
Louisville and Nashville Railroad
P. O. Box 32290
Louisville, Kentucky 40232
(502) 587-5723

Highways

Warsaw is located 4 miles from an Interstate 71 interchange. Interstate 71 extends northeast from Louisville, through Gallatin County, and connects with north-south Interstate 75 in adjoining Boone County. Interstate 71 also connects with Interstates 64 and 65 at Louisville, 62 miles from Warsaw.

Warsaw is served by U.S. 42, 127, and direct access to Indiana Highway 56 is provided by a bridge, recently constructed atop the Markland Dam, about 5 miles west of the city.

Truck Service

Company

Cooper-Jarrett, Inc.*

E & G Motor Express, Inc.**

Interstate Motor Freight
System*

Lee Way Motor Freight, Inc.*

McLean Trucking Company*

Overnite Transportation
Company**

United Trucking Service,
Inc.**

Other Freight Services

United Parcel Service***
Purolator Courier
Corporation***

Home Office

Hanover Plaza
Morristown, New Jersey 07960

Route #1
U.S. 42W
Carrollton, Kentucky 41008

110 Ionia, N.W.
Grand Rapids, Michigan 49503
34011 Northwest 63rd Street
Oklahoma City, Oklahoma 73157

P. O. Box 213
Winston-Salem, North Carolina 27102

1000 Semmes Avenue
Richmond, Virginia 23209

8505 West Warren
Dearborn, Michigan 48126

Nearest Shipping Center

Cincinnati, Ohio, 46 miles distant

Cincinnati, Ohio, 46 miles distant

*Interstate service only.

**Interstate and intrastate service.

***For regular scheduled pickups or for occasional pickups, arrangements must be made with the Cincinnati office of United Parcel Service or Purolator Courier Corporation.

HIGHWAY MILES AND TRUCK TRANSIT TIME IN DAYS FROM
WARSAW, KENTUCKY, TO SELECTED MARKET CENTERS

City	Highway Miles	Delivery		City	Highway Miles	Delivery	
		Time	TL			Time	TL
Atlanta, Ga.	444	1-2		Los Angeles, Ca.	2,170	7-8	
Baltimore, Md.	543	1-2		Louisville, Ky.	62	1	
Birmingham, Ala.	426	1-2		Nashville, Tenn.	230	1	
Chicago, Ill.	333	1		New Orleans, La.	747	2-3	
Cincinnati, Ohio	46	1		New York, N. Y.	693	2-3	
Cleveland, Ohio	283	1		Pittsburgh, Pa.	326	1-2	
Detroit, Mich.	298	2-3		St. Louis, Mo.	325	1	
Knoxville, Tenn.	257	1					

Note: Mileage computations are via the best interstate or primary highways, not necessarily the most direct route of travel.

Sources: Rand McNally Road Atlas, 1979. Official Kentucky Mileage Map, 1979. Delivery time - Overnite Transportation Company, 1000 Semmes Avenue, Richmond, Virginia 23209.

Air

Nearest Scheduled Commercial Airline Services

Location: Greater Cincinnati International Airport
8 miles southwest of Covington, Kentucky;
42 miles northeast of Warsaw

Runways: 3 paved
Length: 9,500 feet; 7,800 feet; 5,500 feet

Traffic Control: Tower

Lighting: Beacon, VASI, MALS-RAIL, ALS-SFL, HIRL,
Red T-Bar, CL and TD2

Services: American, Delta, Piedmont, Republic, TWA,
USAir, and Wright airlines; Comair
commuter air carrier; fuel - 100, Jet A50,
650 turbine; major A & E repairs; storage;
freight handling; airport limousine; taxi;
hotel; restaurant

Air Freight Service: Air freight terminal

Location: Standiford Field
4.5 miles southeast of center of Louisville,
Kentucky; 66.5 miles southeast of Warsaw

Runways: 3 paved
Length: 7,800 feet; 7,250 feet; 5,000 feet

Traffic Control: Control tower

Lighting: Runways, obstructions, beacon and approach
and touchdown lights, center line on one
runway

Services: American, Delta, Eastern, New York Air,
Ozark, Piedmont, TWA, USAir, and
Wright airlines; Allegheny Commuter air
carrier; 100 octane and jet fuel; major
A & E repairs; storage; Louisville-
Jefferson County Air Board; Hertz, Avis,
National and Budget rental car services;
taxi, city bus service; restaurant

Air Freight Service: Air freight terminal

Bus - Southern Greyhound Bus Lines

Rental Services - Automobile, truck, and trailer rentals are available at Florence, Kentucky, 26 miles northeast of Warsaw.

Water

The Ohio River forms the northern boundary of Gallatin County. Warsaw is 46 miles southwest of the Cincinnati-Northern Kentucky area where port facilities are available.

The Northern Kentucky Port Authority has been designated as a Foreign Trade Zone and offers complete U.S. Customs services for exports and imports.

Louisville, 62 miles from Warsaw, also offers port facilities and a Foreign Trade Zone.

POWER AND FUEL

Electricity

Company serving Warsaw and parts of Gallatin County - Kentucky
Utilities Company

Source of power - Kentucky Utilities Company

Total generating capacity - 2,383,767 KW

For industrial rates contact:

Industrial Development Department
Kentucky Utilities Company
One Quality Street
Lexington, Kentucky 40507
(606) 255-1461

Company serving most of Gallatin County - Owen County Rural Electric
Cooperative Corporation

Source of power - East Kentucky Power Cooperative

Total generating capacity - 1,318,010 KW

For industrial rates contact:

Industrial Development Division
East Kentucky Power Cooperative
P. O. Box 707
Winchester, Kentucky 40391
(606) 744-4812

and/or

Owen County RECC
510 Georgetown Road
Owenton, Kentucky 40359
(502) 484-3471

Natural Gas

Company serving Warsaw - Union Light, Heat, and Power Company
Source of supply - Columbia Gas Transmission Corporation
Size of transmission mains - 24-inch (supplier);
4 and 6 inches (distributor)
Distribution mains - 2 and 4 inches
Distribution pressure - Up to 30 psig
Btu content - 1,010 per cubic foot
Specific gravity - 0.60
For rates and supplies contact:

Union Light, Heat, and Power Company
(A subsidiary of The Cincinnati Gas
and Electric Company)
P. O. Box 960
Cincinnati, Ohio 45201
(513) 632-2595

Other Fuels

Propane (Within 25 miles)

Crouch Gas Service
Glenco, Kentucky 41046

Williams Energy Company
West Main Street
Warsaw, Kentucky 41095

G & S Doxol Gas
West Main Street
Warsaw, Kentucky 41095

Fuel oils

Distillate fuel oil - (Within 25 miles)

Ashland Petroleum Company
East Main Street
Warsaw, Kentucky 41095

Cecil Dorton Oil Company
(Gulf bulk plant)
P. O. Box 180
Carrollton, Kentucky 41008

Elmo Baker and Sons
(Union 76)
Main Street
Warsaw, Kentucky 41095

L. D. Chapman Distributors, Inc.
(Chevron bulk plant)
601 Park Avenue
Carrollton, Kentucky 41008

Residual fuel oil - Arrangements must be made with the refinery.

Low sulphur content coal - Available in Kentucky.

WATER AND SEWERAGE

Water

Company serving Warsaw - Warsaw Water Works and Sewer System
P. O. Box 945
Warsaw, Kentucky 41095
(606) 567-5931

Source - 2 artesian wells
Treatment plant capacity - 300,000 gallons per day
Average daily consumption - 130,000 gallons
Peak daily consumption - 150,000 gallons
Type treatment - Chlorination
Storage capacity - 250,000 gallons
Size lines - 8, 6, and 4 inches
Average pressure - 48 psi
Average temperature - 53 degrees F.

MONTHLY WATER RATES

First	2,000 gallons	\$4.00 (Minimum)
Next	8,000 gallons	1.50 per M gallons
Next	10,000 gallons	1.30 per M gallons
Next	20,000 gallons	1.20 per M gallons
All over	40,000 gallons	1.10 per M gallons

Tap-on charge: \$300

Surface water sources - Ohio River
Average discharge - Ohio River at Markland Dam, 125,700 cfs
(9 years, USGS)
Expected ground water yield - 500 to 1,000 gpm along Ohio River;
5 to 50 gpm along Eagle Creek; 5 gpm or less over remainder of county.

Sewerage

Company serving Warsaw - Warsaw Water Works and Sewer System*
P. O. Box 945
Warsaw, Kentucky 41095
(606) 567-5931

Design capacity - 120,000 gallons per day**

Average daily flow - At capacity**

Treatment - Primary and secondary

Treated effluent discharged into - Dry Creek of Craig's Creek**

Size of sanitary mains - 8 and 6 inches

Size of storm mains - 16, 12, and 10 inches

Rates - 50 percent of monthly water bill

Tap-on charge: \$200

*The Warsaw Water Works and Sewer System is on the Environmental Protection Agency's (EPA) priority list to receive funds for the design and construction of a new plant or for improvements to the existing plant. Funding is expected in 1984. Step I of a 201 Facilities Plan has been completed and a Sewer System Evaluation Study has been recommended.

**Kentucky Department for Natural Resources and Environmental Protection.

CLIMATE

Gallatin County

Temperature

Normal (30-year record)	54.0 degrees
Average annual 1979	51.4 degrees
Record highest, August 1962 (18-year record)	102.0 degrees
Record lowest, January 1977 (18-year record)	-25.0 degrees
Normal heating degree days (30-year record)	5,070
(Heating degree day totals are the sums of negative departures of average daily temperatures from 65 degrees F.)	

Precipitation

Normal (30-year record)	39.04 inches
Mean annual snowfall (32-year record)	24.90 inches
Total precipitation 1979	52.76 inches
Mean number days precipitation (.01 inch or more) (32-year record)	129
Mean number days thunderstorms (32-year record)	44

Prevailing Winds (16-year record)

South-southwest

Relative Humidity (17-year record)

1 a.m.	77 percent
7 a.m.	81 percent
1 p.m.	60 percent
7 p.m.	64 percent

Source: U.S. Department of Commerce, Environmental Science

Services Administration, Climatological Data, 1979.

Station of record: Cincinnati, Ohio; Greater Cincinnati Airport.

LOCAL GOVERNMENT

City

Structure - Mayor - 4-year term; 6 Council members - 2-year terms
Budget 1980 - General Fund \$105,183
 Water and Sewer Fund 84,982
Fees and licenses - Occupational license fees range from \$10 to \$150 annually, depending on the type of business.

County

Structure - County Judge/Executive - 4-year term;
 4 magistrates - 4-year terms
Budget 1980-81 - General Fund \$366,371; Road Fund \$215,434

Assessed Value of Property, 1980

<u>Classes of Property</u>	<u>Warsaw</u>	<u>Gallatin County</u>
Real Estate	\$11,506,367	\$55,771,144
Tangibles	3,766,342	12,362,657

Property Taxes

All property in Kentucky is assessed at 100 percent of fair cash value.

Land and buildings are taxed by the state and may be taxed by local jurisdictions. The state rate is \$0.241 per \$100 of assessed valuation.

Manufacturing machinery, raw materials inventories, pollution control equipment, and goods in the process of manufacture are not subject to local taxation. The state rate is \$0.15 per \$100.

Other tangible personal property owned by manufacturers (automobiles, trucks, finished goods, office furniture, office equipment) is taxed by the state at \$0.45 per \$100 and may be taxed by local jurisdictions.

Property stored in public warehouses in a transit status is not subject to local taxation. The state rate is only \$0.015 per \$100.

Intangible personal property located in Kentucky (money in hand, shares of stock, notes, bonds, accounts receivable, and other credits) is taxed by the state at \$0.25 per \$100, and is not subject to local taxation.

Private leaseholds in industrial facilities owned by cities or counties and financed by industrial revenue bonds are subject to a state tax of \$0.015 per \$100 of value (essentially the lessee's equity, adjusted for appreciation or depreciation). Local taxation is not permitted.

Combined State and Local Rates Per \$100 Valuation, 1980*
(100% assessment)

	<u>Inside City of Warsaw</u>	<u>Outside City</u>
1. Land and buildings	\$0.900	\$0.660
2. Mfg. machinery, raw materials, goods in process, pollution control equipment	0.150	0.150
3. Finished goods, office equipment, vehicles, other tangibles	1.109	0.869
4. Intangibles (accounts receivable, notes, bonds, etc.)	0.250	0.250
5. Leaseholds in industrial revenue bond financed plants	0.015	0.015

Planning and Zoning

City agency - Warsaw Planning Commission

Zoning enforced - City of Warsaw only

Subdivision regulations enforced - City of Warsaw and 3 miles beyond corporate limits

Local codes enforced - None

Mandatory state codes enforced - Kentucky Plumbing Code, National Electric Code, Kentucky Boiler Regulations and Standards, National Fire Protection Association Standards of Safety (for buildings with an occupancy of less than 100 persons), Kentucky Building Code (modeled after BOCA code and applying to buildings with an occupancy of 100 or more persons)

*Kentucky Department of Commerce.

Safety

<u>Police</u>	<u>Warsaw</u>	<u>Gallatin County</u>
Total staff	2 full-time 2 part-time	3
Radio-patrol cars	1	1

Fire*

American Insurance Association Fire Rating	7	10
Volunteers	27	--

Rescue Service

Gallatin County Metro Ambulance Service**

Number of volunteers - 26

Equipment - 2 fully-equipped ambulances, jeep, fire truck, and a response truck

Personnel training - Twenty of the volunteers are Emergency Medical Technicians.

*The City of Warsaw and Gallatin County maintain a joint fire station providing fire protection to both city and county residents.

**Provides rescue service and ambulance service.

Refuse Collection and Disposal

	<u>Warsaw</u>	<u>Gallatin County</u>
Type service	Municipal	Private
Fee charged:		
residential	\$4 per month (pickup once weekly)	\$4 per month
business	\$8 per month (pickup twice weekly)	
industrial	\$5 to \$55 per month	\$6 to \$8 per month
Collection frequency:		
residential	\$5 to \$55 per month	---
business	Once or twice weekly	Weekly
industrial	By volume	Weekly
Disposal method	By volume	---
	Sanitary landfill	Sanitary landfill

EDUCATION

Public Schools

Gallatin County

Total Enrollment (Fall 1980)	1,104
Elementary	589
High School	515
Student-Teacher Ratio	22-1
Elementary	24-1
High School	21-1
Percent High School Graduates to College (1979)	23.1
Expenditures Per Pupil (1979-80)	\$1,174.13
Bonded Indebtedness (June 30, 1980)	\$540,000

Nonpublic Schools

Numerous private schools are located in the three-county Northern Kentucky area which borders Gallatin County.

Area Colleges and Universities

<u>Name</u>	<u>Location (Miles distant)</u>	<u>Enrollment (Fall 1980)</u>	<u>Highest Degree Conferred</u>
Thomas More College	Fort Mitchell, Kentucky (33)	1,316	Baccalaureate
Hanover College	Hanover, Indiana (34)	1,021	Baccalaureate
Northern Kentucky University	Covington, Kentucky (45)	8,358	Masters, J.D.*
College of Mt. St. Joseph on the Ohio (women)	Cincinnati, Ohio (46)	1,684	Baccalaureate, Masters in Education
Edgecliff	Cincinnati, Ohio (46)	752	Academic and Professional
Hebrew Union College	Cincinnati, Ohio (46)	150	Masters, Ph.D., D.H.L.
University of Cincinnati	Cincinnati, Ohio (46)	39,772	Academic and Professional
Xavier University	Cincinnati, Ohio (46)	7,197	Masters
Kentucky State University	Frankfort, Kentucky (51)	2,342	Masters
Midway College	Midway, Kentucky (63)	316	Associate
University of Louisville	Louisville, Kentucky (62)	20,585	Doctorate, M.D., D.M.D., J.D.
Bellarmino College	Louisville, Kentucky (62)	2,284	Masters
Spalding College	Louisville, Kentucky (62)	1,048	Masters
Jefferson Community College	Louisville, Kentucky (62)	4,822	Associate
Jefferson Community College - Southwest	Louisville, Kentucky (62)	1,167	Associate
Georgetown College	Georgetown, Kentucky (69)	1,270	Masters

*Salmon P. Chase College of Law is part of Northern Kentucky University.

Vocational Schools

Both the state vocational-technical schools and the area vocational education centers are operated by the Kentucky Department of Education. The state vocational-technical schools enroll persons full time who are at least 16 years of age and not in school. These students attend classes for six hours each day. The area vocational education centers are designed to accommodate high school students who are at least 15 years of age. These students attend vocational school for three hours each day. The state vocational-technical schools and the area education centers offer evening courses to enable working adults to upgrade current job skills.

Nearest State Schools

Location	Northern Kentucky State
Miles Distant	Vocational-Technical School
Curriculum	Covington
	38
	Business and Office
	Clerical
	Data Processing
	Secretarial
	Consumer and Home Economics
	Child Care Services
	Commercial Foods
	Health and Personal Services Occupations
	Cosmetology
	Practical Nursing
	Industrial Education
	Air Conditioning and Refrigeration
	Auto Body Repair and Refinishing
	Automotive Technology
	Carpentry
	Communications
	Drafting
	Electronics
	Machine Shop
	Masonry
	Welding
	Learning Resource Center

(Contd.)

Location	Northern Campbell County
Miles Distant	Vocational-Technical School
Curriculum	Highland Heights
	43
	Health and Personal Services Occupations
	Dental Assistant
	Medical Assistant
	Medical Transcription
	Industrial Education
	Auto Mechanics (Foreign)
	Carpentry-Interior Finishing
	Commercial Art
	Diesel Mechanics
	Industrial Electronics
	Plumbing
	Printing-Graphic Arts

Nearest Area Education Center

Location	Carroll County Area Vocational
Miles Distant	Education Center
Curriculum	Carrollton
	17 miles from Warsaw
	Business and Office
	Accounting
	Business Math
	Clerical
	Office Machines
	Secretarial
	Shorthand
	Typing
	Health and Personal Services Occupations
	Health Careers
	Industrial Education
	Air Conditioning and Heating
	Auto Mechanics
	Carpentry
	Industrial Electricity
	Welding

Arrangements can be made to provide training in the specific production skills required by an industrial plant. Instruction may be conducted either in the vocational school or in the industrial plant, depending upon the desired arrangement and the availability of special equipment.

HEALTH

Local Medical Personnel

Physicians - 1
Dentists - 1

Hospitals

<u>Nearest General Hospital</u>	<u>Location</u>	<u>Beds</u>
Carroll County Memorial Hospital	Carrollton, 17 miles from Warsaw	54

General hospital facilities - Operating room, recovery room, emergency room, X-ray, laboratory, OB section, nursery, blood bank, physical therapy, electrocardiography, cardiac monitors, respiratory therapy, and endoscopic procedures

Medical staff - 7 doctors, 16 registered nurses, 11 graduate licensed practical nurses, 3 medical technologists, 2 X-ray technicians, 1 respiratory therapist, 1 physical therapist, 3 medical records technicians

Ambulance Service

Name - Gallatin County Metro Ambulance Service*
Staff - 26 volunteers (20 Emergency Medical Technicians)
Service - 24-hour, county-wide
Equipment - 2 fully-equipped ambulances, jeep, fire truck and a response truck

Public Health

Facility - Three Rivers District Health Department, Gallatin County Health Center
Staff - 1 registered nurse and 1 clerk (full time); 1 doctor, 1 nutritionist and 1 environmentalist (part time)

*Provides ambulance service and rescue service.

OTHER LOCAL FACILITIES

Communications

Telephone - Cincinnati Bell, Inc.
Services - Standard

Telegraph - Western Union
Services - Toll-free number (800-325-5100)

Postal - U.S. Post Office
Class - Second
Mail received - Once daily
Mail dispatched - Once daily

Newspapers - Gallatin County News
Weekly and circulation - 2,500
Other papers
received from - Louisville and Lexington, Kentucky;
Cincinnati, Ohio; Madison, Indiana

Radio -
Major stations
received from - Louisville, Kentucky; Cincinnati, Ohio

Television -
Cable service
Reception from - Lexington, Louisville and Owenton, Kentucky;
Cincinnati, Ohio; Atlanta, Georgia;
Chicago, Illinois

Kentucky Educational
Television - Owenton transmitter, Channel 52

Library Services

Public library - Gallatin County Free Public Library
Size collection - 16,000 volumes
Circulation - 1,300 (monthly average)
Services - Adult crafts, blind and handicapped programs, bookmobile,
cassette tapes, children's weekly movie, copy machine, craft
classes, film, Interlibrary loan, newspapers, projectors, records,
record player, senior citizens' programs, special events and
story hour

Religious Institutions

Number of churches in Gallatin County - 17

Denominations - Baptist
Catholic
Christian
Church of Christ
Methodist
Pentecostal

Nearest Synagogues - Cincinnati, Ohio, 46 miles from Warsaw
Congregations - 16 Synagogues (orthodox, reform, traditional
and conservative)

Financial Institutions

<u>Banks</u>	<u>Assets</u>	<u>Deposits</u>	<u>Statement Date</u>
Farmers State Bank	\$8,387,000	\$7,440,000	12/31/79

Hotels and Motels

Total number - 3
Total rooms - 15

Clubs and Organizations

American Legion
Art Club
Beta Club
Boy Scouts
Eastern Star
4-H Club
Future Farmers of America (FFA)
Future Homemakers of America (FHA)
Future Teachers of America (FTA)
Gallatin County Fish and Game Club
Historical Society
Homemakers
Jaycees
Lions
Little League Baseball
Masonic Lodge
Ministerial Association
Northern Kentucky Bobwhite Club
Northern Kentucky Coon Hunters
Parent Teachers Association (PTA)
T-ball
Veterans of Foreign Wars (VFW)
Woman's Club
Women's Auxiliary to the Fire Department
Youth Baseball League

RECREATION

Local

Warsaw's location on the Ohio River provides for excellent recreational activities. The most popular are boating, water skiing, and fishing.

Other recreational facilities close to Warsaw are located in adjoining Boone County. Municipal recreation departments provide supervised recreation programs with playgrounds, swimming pools, tennis courts, baseball diamonds, football fields, basketball courts, and volleyball courts. Private recreational facilities include movie theaters, bowling facilities, country clubs, golf courses and tennis clubs.

Area (Within 65 miles)

The 809-acre General Butler State Resort Park is located 17 miles southwest of Warsaw at Carrollton. The park includes a 30-acre lake, a boat dock, a 9-hole golf course, a miniature golf course, a swimming pool, playgrounds, shuffleboard, bicycle rentals, tennis courts, planned recreation, fishing, camping, horseback riding, lodge rooms or cottages, and gift shops. General Butler's family home, the Butler Mansion, has been restored and contains a museum of Ohio River lore.

Big Bone Lick State Park in Boone County, 30 miles northeast of Warsaw, provides a unique combination of educational and recreational pleasures. Visitors can walk through the original "jellyland," now a natural outdoor museum with replicas and exhibits that tell the story of Big Bone Lick. Recreational activities and facilities include a boat launch and picnic area on the Ohio River, a modern campground, fishing in the nearby lake, an indoor museum and gift shop, picnic grounds, tennis, shuffleboard, volleyball, basketball, horse shoes, planned recreation, and a swimming pool in the camping area open Memorial Day through Labor Day.

Cincinnati, approximately 46 miles northeast of Warsaw, provides a wide variety of entertainment, cultural facilities and activities, and sports events. The Cincinnati Zoo offers entertainment the whole family can enjoy. Kings Island is the largest family entertainment center in the entire midwest. The Cincinnati Riverfront Stadium is the home of the Cincinnati Reds baseball and Bengals pro football teams. The Riverfront Coliseum offers World Hockey League action with the Cincinnati Stingers. Cultural interests include the Cincinnati Symphony Orchestra, various art galleries and museums, libraries, and theaters presenting Broadway plays.

Frankfort, 51 miles from Warsaw, is the capital of the Commonwealth of Kentucky and offers numerous tourist attractions. Included are the State Capitol; the Old State Capitol; Kentucky History Museum; the Governor's and Lieutenant Governor's Mansions; the Daniel Boone Monument; the Floral Clock; the Kentucky Historical Military Museum; several distillery tours and museums; and the Corner of Celebrities, a unique 4-acre area where 36 senators, governors, admirals, and justices have lived.

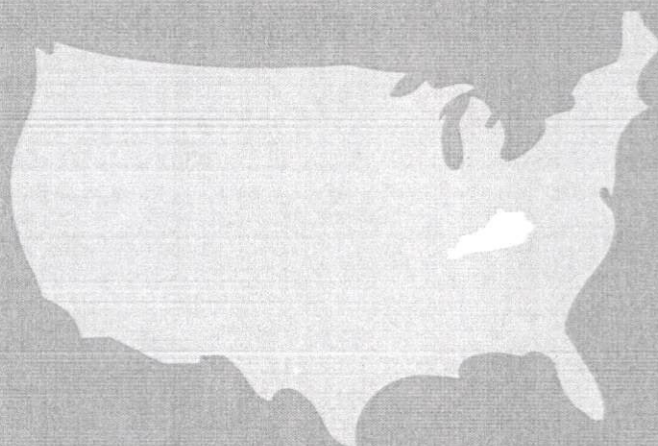
Louisville, 62 miles southwest of Warsaw, offers a wide variety of recreational, sporting, and cultural events. Most notable is the running of the Kentucky Derby, the most prestigious thoroughbred horse race in America which is held at historic Churchill Downs on the first Saturday in May. The Kentucky Derby was modeled after the Epsom Derby (Darby) held at Epsom Downs in Surrey County, England.

Other famous Louisville attractions are the renowned sternwheeler, Belle of Louisville (the Belle vies for honors in the Great Steamboat Race held annually during the Derby Festival); the Kentucky Derby Museum; the Louisville Zoological Gardens; the Museum of Natural History and Science; and the J. B. Speed Art Museum. Seasonal performances of the arts include the Actors Theatre, the Louisville Ballet Company, the Kentucky Opera Association, the Louisville Bach Society, the Louisville Orchestra and Shakespear-in-the-Park. The E. P. "Tom" Sawyer State Park in Louisville consists of 319 acres and provides a swimming pool, tennis, a picnic area and playground.

Located in Madison, Indiana, 32 miles from Warsaw, is the home of the world-famous Madison Regatta. Highlights of the Gold Cup Week are the world's fastest race boats competing in the Gold Cup and the Indiana Governor's Cup Race. A week of prerace festivities begins with the Miss Madison Regatta beauty pageant and continues with the volunteer fire departments' waterball fight, fireworks, a balloon race, a parade and a 6-mile marathon race. The annual event, held the first week in July, is featured on ABC-TV's "Wide World of Sports."

Madison is also noted for its many stately homes and historical buildings which have been restored to their original condition by the efforts of Historic Madison, Inc.

Clifty Falls State Park near Madison, Indiana, was established in 1920, and contains 1,309 acres of scenic beauty overlooking the Ohio River. The view over the river is comparable to that of the Swiss Alps.



Kentucky Department of Commerce
Capital Plaza Tower
Frankfort, Kentucky 40601 • Phone (502) 564-4270