

1983

Industrial Resources: Green County - Greensburg

Kentucky Library Research Collections
Western Kentucky University, spcol@wku.edu

Follow this and additional works at: https://digitalcommons.wku.edu/green_cty

 Part of the [Business Administration, Management, and Operations Commons](#), [Growth and Development Commons](#), and the [Infrastructure Commons](#)

Recommended Citation

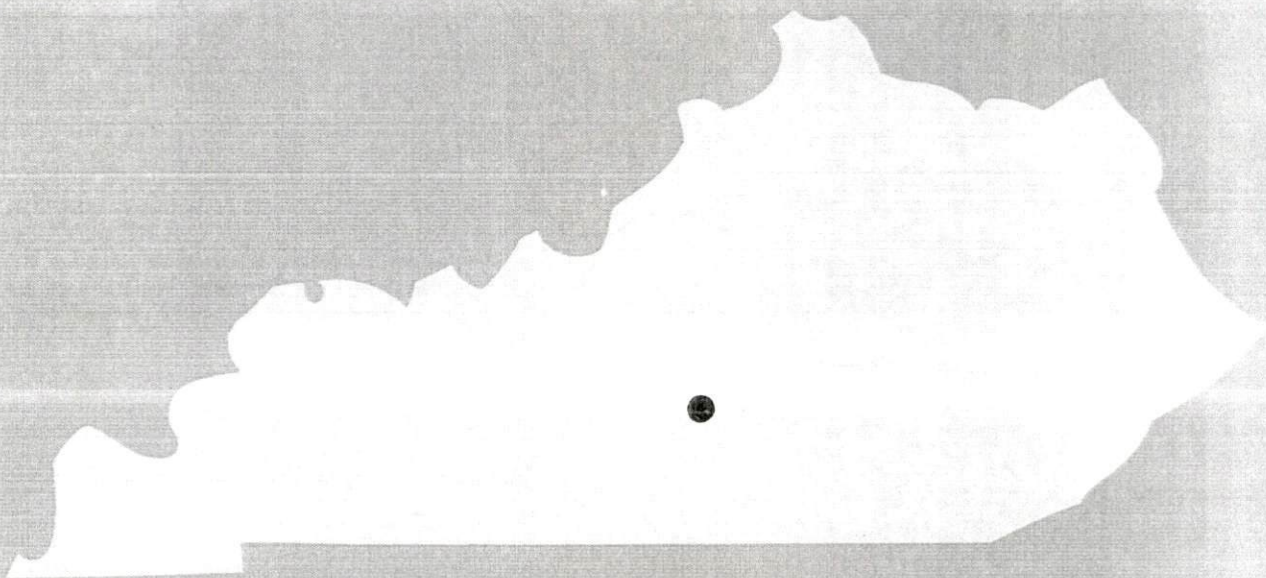
Kentucky Library Research Collections, "Industrial Resources: Green County - Greensburg" (1983). *Green County*. Paper 1.
https://digitalcommons.wku.edu/green_cty/1

This Report is brought to you for free and open access by TopSCHOLAR®. It has been accepted for inclusion in Green County by an authorized administrator of TopSCHOLAR®. For more information, please contact topscholar@wku.edu.

IR Green County

326

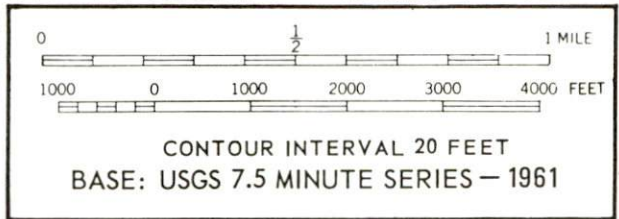
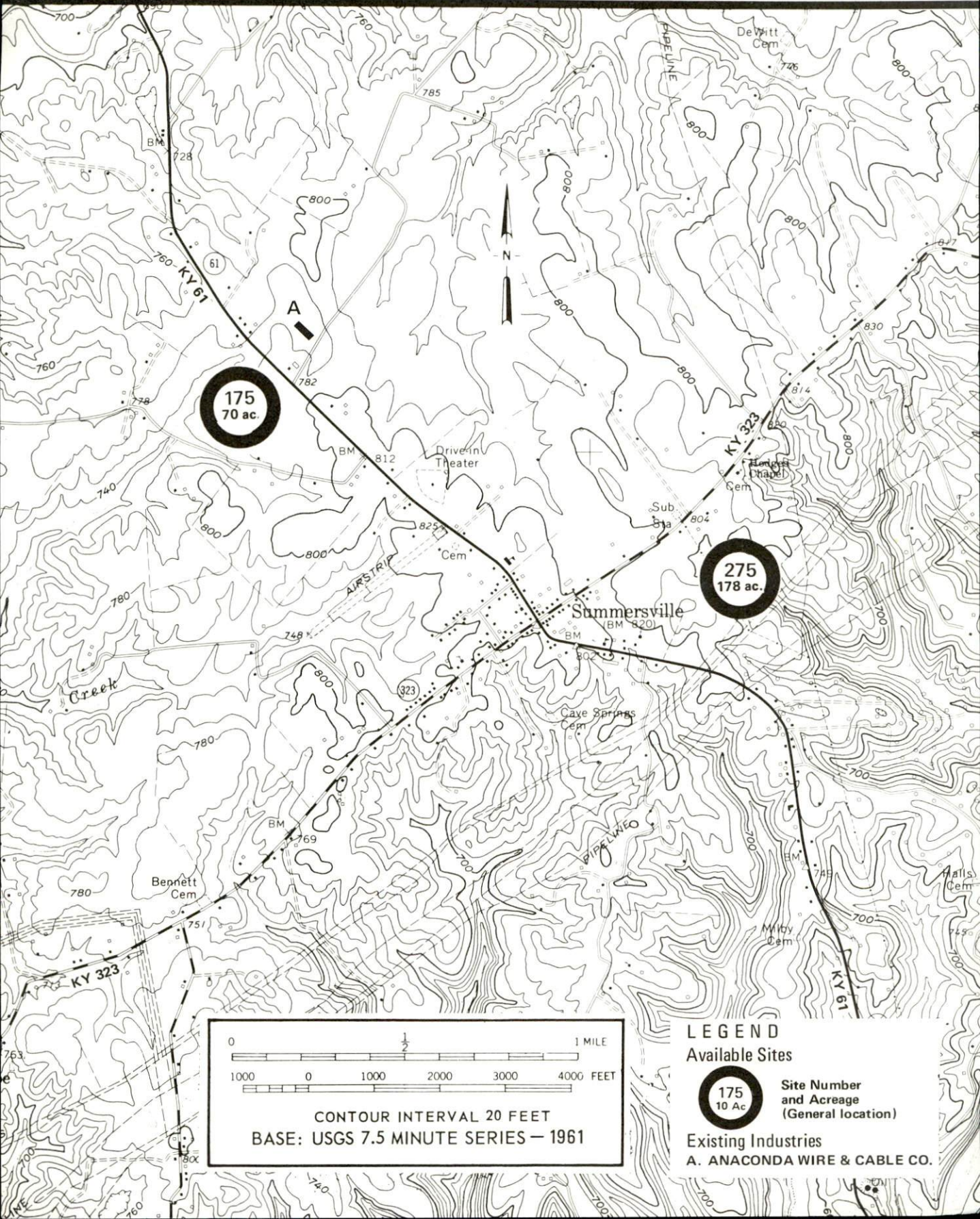
A comprehensive
report on
Greensburg, Ky.
1983



KENTUCKY & CO.
The state that's run like a business.

SUMMERSVILLE, KENTUCKY --- Index to Industrial Sites --- 1975

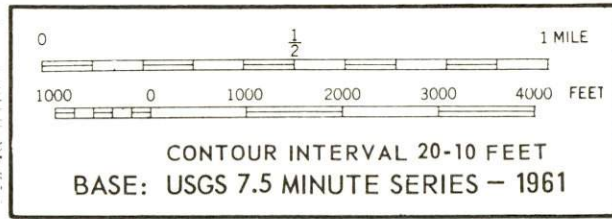
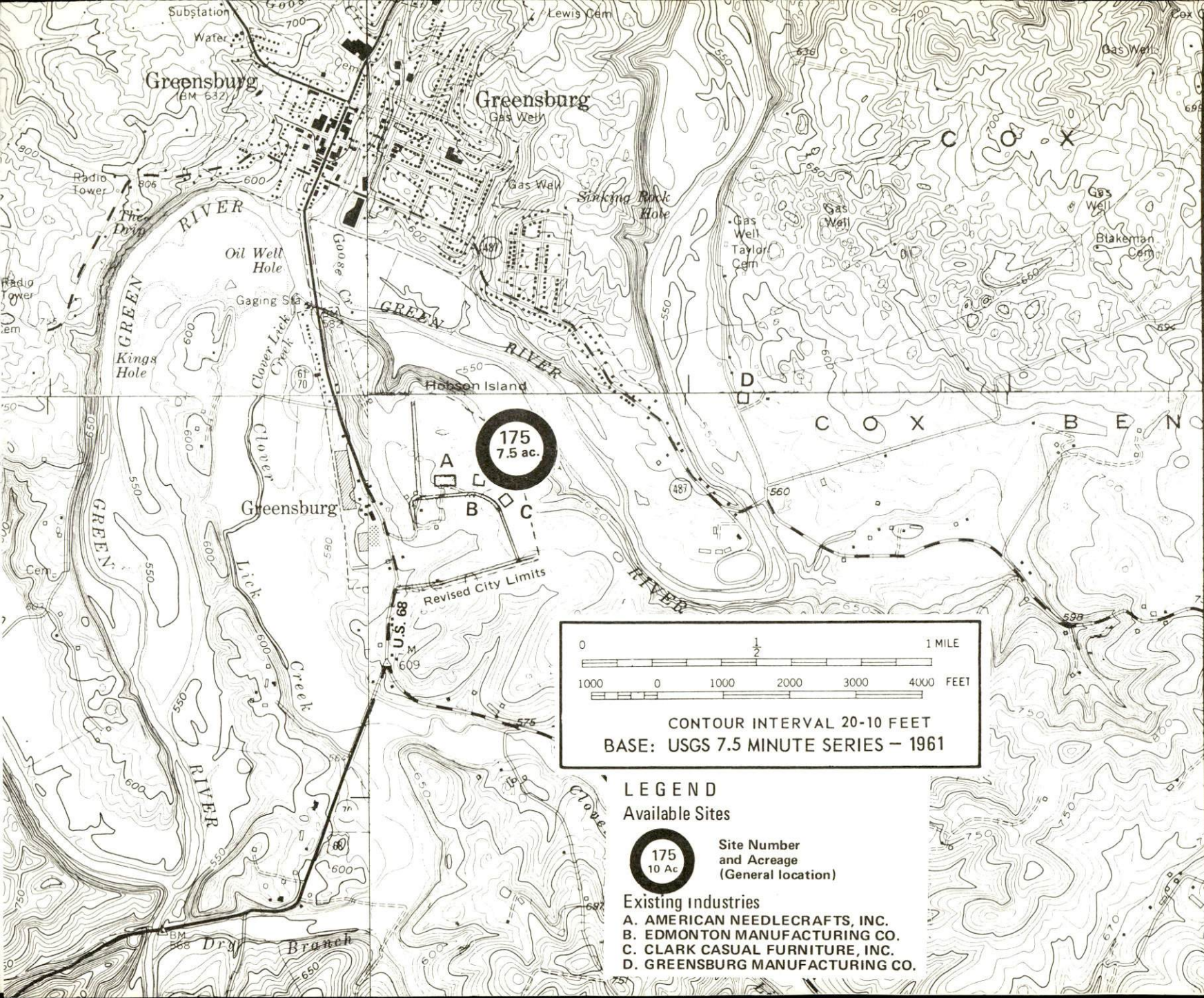
For detailed data on individual sites, contact George Gupton, Kentucky Utilities Company, 110 Public Square, Greensburg, Kentucky 42743, or the Industrial Development Division, Kentucky Department of Commerce, Capital Plaza Tower, Frankfort, Kentucky 40601.



LEGEND
Available Sites
175
10 Ac Site Number and Acreage (General location)
Existing Industries
A. ANACONDA WIRE & CABLE CO.

GREENSBURG, KENTUCKY --- Index to Industrial Sites --- 1975

For detailed data on individual sites, contact George Gupion, Kentucky Utilities Company, 110 Public Square, Greensburg, Kentucky 42743, or the Industrial Development Division, Kentucky Department of Commerce, Capital Plaza Tower, Frankfort, Kentucky 40601.



LEGEND

Available Sites



Site Number and Acreage (General location)

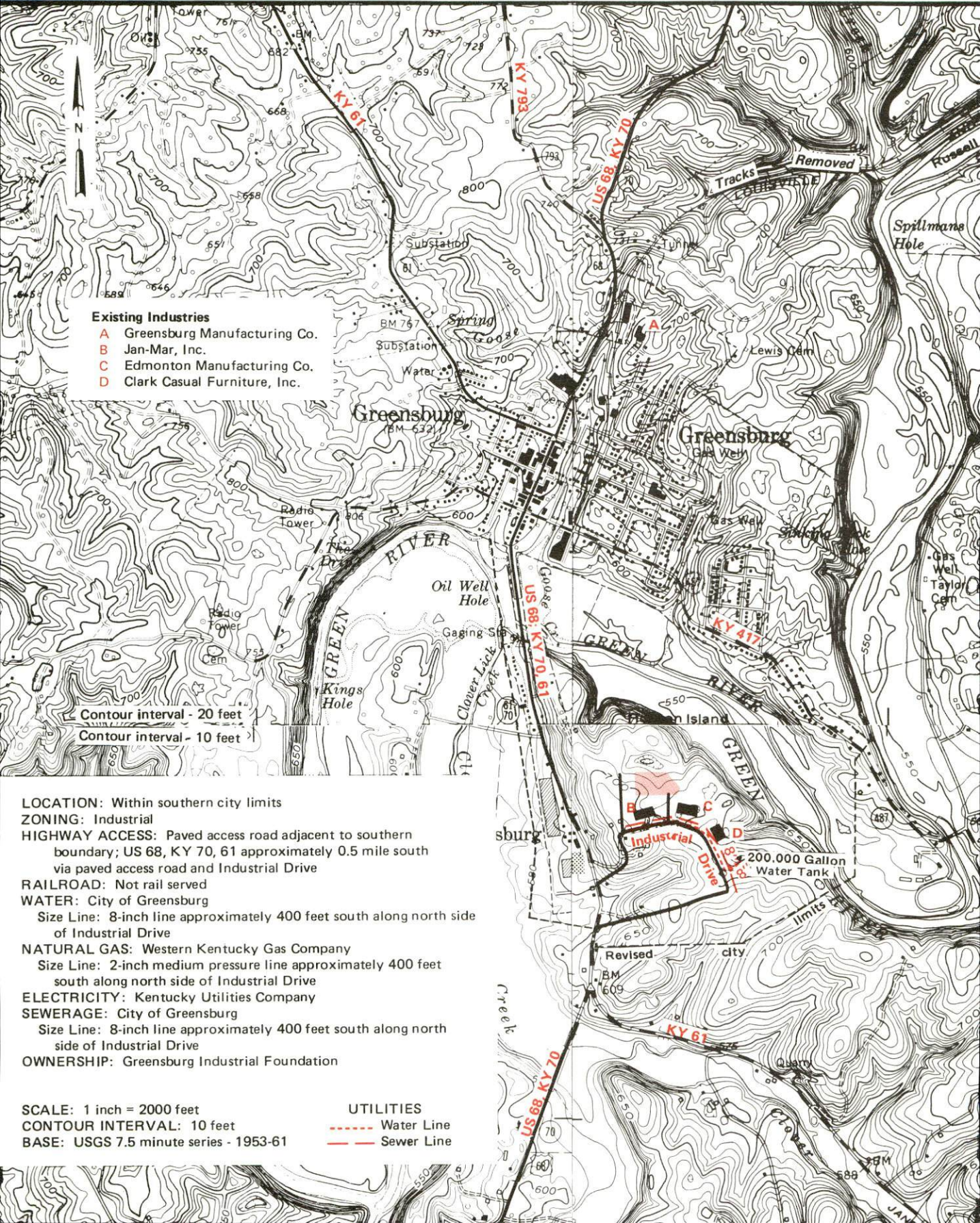
Existing Industries

- A. AMERICAN NEEDLECRAFTS, INC.
- B. EDMONTON MANUFACTURING CO.
- C. CLARK CASUAL FURNITURE, INC.
- D. GREENSBURG MANUFACTURING CO.



GREENSBURG, KENTUCKY --- Site 183 --- 5 Acres

For more information contact the Department of Economic Development, Office of Business Development, Industrial Development Division, Capital Plaza Tower, Frankfort, Kentucky 40601 (502-564-7140).



- Existing Industries**
- A Greensburg Manufacturing Co.
 - B Jan-Mar, Inc.
 - C Edmonton Manufacturing Co.
 - D Clark Casual Furniture, Inc.

Contour interval - 20 feet
 Contour interval - 10 feet

- LOCATION:** Within southern city limits
ZONING: Industrial
HIGHWAY ACCESS: Paved access road adjacent to southern boundary; US 68, KY 70, 61 approximately 0.5 mile south via paved access road and Industrial Drive
RAILROAD: Not rail served
WATER: City of Greensburg
 Size Line: 8-inch line approximately 400 feet south along north side of Industrial Drive
NATURAL GAS: Western Kentucky Gas Company
 Size Line: 2-inch medium pressure line approximately 400 feet south along north side of Industrial Drive
ELECTRICITY: Kentucky Utilities Company
SEWERAGE: City of Greensburg
 Size Line: 8-inch line approximately 400 feet south along north side of Industrial Drive
OWNERSHIP: Greensburg Industrial Foundation

SCALE: 1 inch = 2000 feet
CONTOUR INTERVAL: 10 feet
BASE: USGS 7.5 minute series - 1953-61

UTILITIES
 - - - - - Water Line
 - - - - - Sewer Line

A COMPREHENSIVE REPORT ON
GREENSBURG, KENTUCKY

Prepared by
The Kentucky Department of Economic Development
Division of Research and Planning
in cooperation with
The Greensburg-Green County Chamber of Commerce
and
The Green County Industrial Foundation

1983

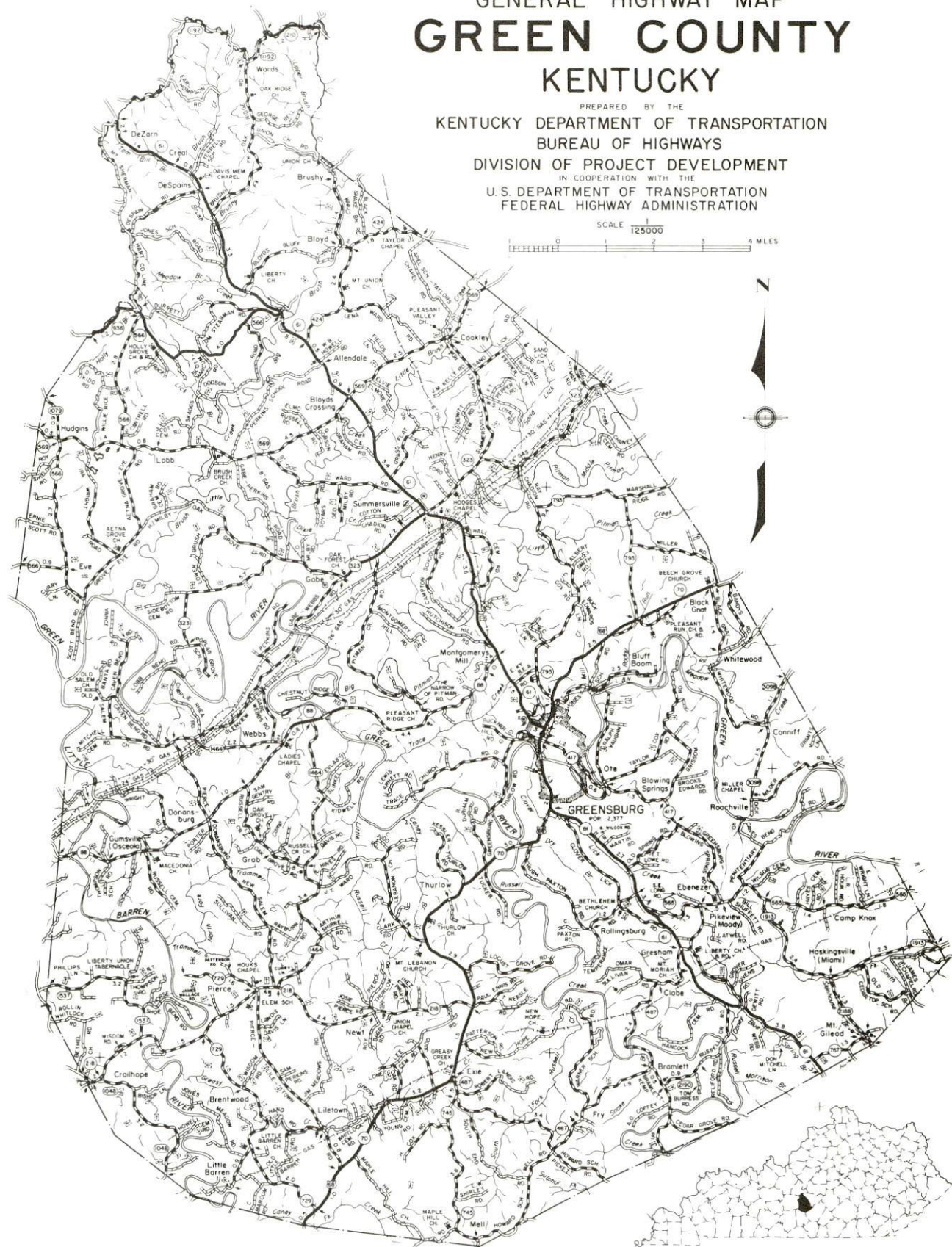
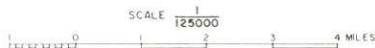
TABLE OF CONTENTS

<u>Chapter</u>	<u>Page</u>
INDUSTRIAL SITES	i
GREENSBURG, KENTUCKY - A RESOURCE PROFILE	1
THE LABOR MARKET AREA	3
Population	3
Labor Force Characteristics of Residents, 1981	3
Green County Manufacturing Firms, Their Products and Employment	4
Labor Organizations in Manufacturing Firms	5
Industrial Services	5
Estimated Male Labor Supply	6
Estimated Female Labor Supply	6
Average Weekly Wages by Industry, by Place of Work, 1981	7
Per Capita Personal Income	9
TRANSPORTATION	10
Rail	10
Highways	10
Truck Service	11
Air	12
Bus	12
Taxi	12
Rental Services	12
Water	12
POWER AND FUEL	13
Electricity	13
Natural Gas	14
Other Fuels	14
WATER AND SEWERAGE	15
Public Water Supply	15
Raw Water	16
Sewerage	16
CLIMATE	17

<u>Chapter</u>	<u>Page</u>
LOCAL GOVERNMENT	18
City	18
County	18
Assessed Value of Property, 1982	18
Property Taxes	18
Combined State and Local Rates Per \$100 Valuation, 1982	19
Planning and Zoning	19
Safety	20
Police	20
Fire	20
Rescue Service	20
Refuse Collection and Disposal	20
EDUCATION	21
Public Schools	21
Area Colleges and Universities	21
Vocational Schools	22
HEALTH	24
Local Medical Personnel	24
Hospitals	24
Ambulance Service	24
Public Health	24
OTHER LOCAL FACILITIES	25
Communications	25
Library Services	25
Religious Institutions	26
Financial Institutions	26
Hotels and Motels	26
Clubs and Organizations	27
RECREATION	28

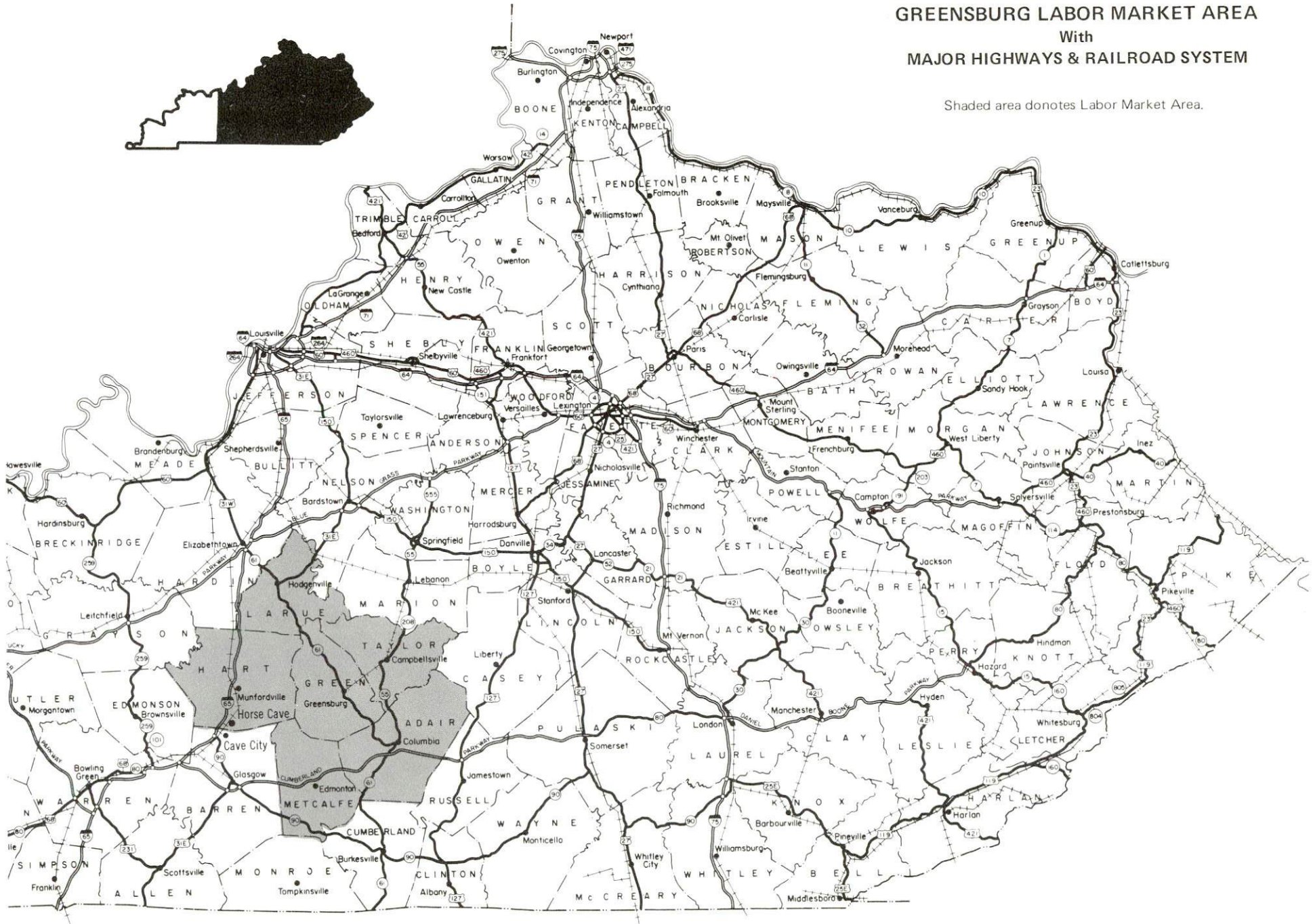
1982 EDITION
GENERAL HIGHWAY MAP
GREEN COUNTY
KENTUCKY

PREPARED BY THE
KENTUCKY DEPARTMENT OF TRANSPORTATION
BUREAU OF HIGHWAYS
DIVISION OF PROJECT DEVELOPMENT
IN COOPERATION WITH THE
U.S. DEPARTMENT OF TRANSPORTATION
FEDERAL HIGHWAY ADMINISTRATION



GREENSBURG LABOR MARKET AREA With MAJOR HIGHWAYS & RAILROAD SYSTEM

Shaded area donotes Labor Market Area.



GREENSBURG, KENTUCKY - A RESOURCE PROFILE

Greensburg, the site of the Old Green County Courthouse, is the county seat and the largest city in Green County. Greensburg, with a population of 2,377 in 1980, is located 83 miles south of Louisville, Kentucky; 139 miles northeast of Nashville, Tennessee; and 340 miles southeast of St. Louis, Missouri.

Green County, with a land area of 289 square miles, is located in south central Kentucky in the Mississippian Plateau Region. In 1980, Green County had a population of 11,043.

The Economic Framework

The total number of Green County residents employed in 1981 averaged 5,140, with nonagricultural jobs accounting for 4,070 workers. Manufacturing employers in the county reported 650 workers; wholesale and retail trade 360; state and local government 395; and 190 in the services occupations. Manufacturing employment is greatest in apparel and related products, lumber and wood products, and furniture and fixtures industries.

Per capita personal income in Green County in 1980 was \$5,865, an increase of 37 percent since 1976.

The Greensburg labor market area includes Green County and the five adjoining counties. The total number of residents employed in the labor market area in 1981 averaged 36,120, with nonagricultural jobs accounting for 30,180 workers. Manufacturing employers in the area reported 2,780 workers; wholesale and retail trade 3,370; state and local government 2,845; and 1,700 in the service occupations.

Resources for Growth

1. Labor supply - There is a current estimated labor supply of 5,130 men and 2,670 women available for industrial jobs in the labor market area. In addition, from 1983 through 1987, 3,630 young men and 3,565 young women in the area will become 18 years of age and potentially available for work.

2. Transportation - The nearest rail service is provided by the Seaboard System Railroad at Campbellsville, 11 miles northeast of Greensburg. Greensburg is served directly by U. S. Highway 68 and Kentucky Highways 61 and 70. Interchanges of Interstate 65 are located 28 miles west and 38 miles northeast of Greensburg. Access to the Cumberland Parkway, a four-lane, east-west toll, is 31 miles to the south. Four common carriers have the authority to serve Greensburg. The nearest commercial airline service is available at Louisville's Standiford Field, 78 miles north of Greensburg.

3. Power and Fuel - Kentucky Utilities Company provides electric power to Greensburg and parts of Green County. The county is also served by the Taylor County RECC, which is supplied by the East Kentucky Power Cooperative. Natural gas service to Greensburg is provided by the Western Kentucky Gas Company, which is supplied by the Tennessee Gas Pipeline Company. There are four distributors of propane and seven distributors of distillate fuel oil that serve Greensburg.

4. Education - Primary and secondary education in Greensburg and Green County is provided by the Green County School System.

One university, two senior colleges, two junior colleges, and two community colleges are located within 70 miles of Greensburg.

The Elizabethtown State Vocational-Technical School, 40 miles from Greensburg, offers training in thirteen course areas. The Green County Area Vocational Education Center at Greensburg provides training in nine different courses.

THE LABOR MARKET AREA

The Greensburg Labor Market Area includes Green County and the adjoining Kentucky counties of Adair, Hart, Larue, Metcalfe and Taylor.

POPULATION			
Area	1980	1970	Percent Nonwhite
Greensburg	2,377	1,990	4.3
Labor Market Area	84,262	73,354	N/A
Green County	11,043	10,350	3.5
Adair County	15,233	13,037	3.6
Hart County	15,402	13,980	8.1
Larue County	11,922	10,672	4.7
Metcalfe County	9,484	8,177	3.0
Taylor County	21,178	17,138	5.6

Note: The 1980 counts of population by race are provisional.

Sources: U.S. Department of Commerce, Bureau of the Census, 1980 Census of Population and Housing, March 1981; 1980 Census of Population, Number of Inhabitants. Population Research Unit, Urban Studies Center, University of Louisville, Kentucky Demographics: The 1980 Census of Kentucky, Characteristics of Population, Households, Housing, January 1982.

LABOR FORCE CHARACTERISTICS OF RESIDENTS, 1981		
	Green County	Labor Market Area
Civilian Labor Force	5,509	38,997
Employment	5,138	36,119
Agricultural	1,064	5,939
Nonagricultural	4,074	30,180
Unemployment	371	2,878
Rate of Unemployment (%)	6.7	7.4

Source: Kentucky Department for Human Resources, Kentucky Labor Force Estimates, Annual Averages, 1981.

GREEN COUNTY MANUFACTURING FIRMS,
THEIR PRODUCTS AND EMPLOYMENT

Firm (Establishment date)	Product	Employment			Labor Unions
		Total	Male	Female	
<u>Greensburg</u>					
Aluminum Fabricators, Inc. (1981)	Aluminum building products, aluminum steeple, cupolas	4	4	-	
Clark Casual Furniture, Inc. (1960)	Rattan furniture	100	72	28	
Custom House of Greensburg (1976)	Comforters, pillows, bedspreads	15	1	14	
Edmonton Manufacturing Company (1964)	Work clothes, uniforms	165	15	150	
Farmers Milling & Supply (1981)	Feed, prepared	4	4	-	
Greensburg Bottling Company (1926)	Carbonated beverages	30	27	3	
Greensburg Manufacturing Company (1968)	Furniture dimension stock, cut- ting board, butchers blocks	146	138	8	
Greensburg Manufacturing Company, Keyboard Division, Kimball Inter- national, Inc. (1975)	Piano key- boards	56	37	17	
Greensburg Record-Herald (1930)	Newspaper	10	3	7	
Jan-Mar, Inc. (1977)	Caps baseball style, nylon travel bags	75	8	67	
Nally & Gibson Asphalt Plant (1970)	Bituminous asphalt	3	3	-	
Sharpe & Sons (1956)	Cedar lumber & post, hard- wood lumber	3	3	-	

<u>Firm (Establishment date)</u>	<u>Product</u>	<u>Employment</u>			<u>Labor Unions</u>
		<u>Total</u>	<u>Male</u>	<u>Female</u>	
Taylor-Green Ready Mix Company (1961)	Ready mix concrete, concrete products	11	10	1	
Tennessee Gas Pipeline Company (1951)	Liquid Hydrocarbon	47	46	1	
Winn Milling Company (1940)	Feed, fertilizer	6	5	1	

Summersville

Anaconda Industries (1965)	Enamel coated cooper wire	63	61	2	Teamsters*
Summersville Feed Mill (1964)	Feed	3	3	-	

*See Labor Organizations below.

Source: Kentucky Department of Economic Development, Division of Research and Planning.

LABOR ORGANIZATIONS IN MANUFACTURING FIRMS

<u>Union</u>	<u>Representing workers at:</u>
International Brotherhood of Teamsters, Chauffeurs, Warehousemen and Helpers of America	Anaconda Industries

INDUSTRIAL SERVICES

<u>Types of Services</u>	<u>Location</u>	<u>Mileage from Greensburg</u>
Tool & Die, Machine & Pattern Shops	Horse Cave	35
Metal Service Centers	Bowling Green	69
Heat Treating	Louisville	83
Metal Finishers	Elizabethtown	40
Electric Motor Repair	Lebanon	31

Source: Kentucky Department of Economic Development, Kentucky Directory of Selected Industrial Services, 1981.

ESTIMATED MALE LABOR SUPPLY
GREENSBURG LABOR MARKET AREA

Area	Current			Future	
	Total	Not in Labor Force	Unemployed	Under-employed	Becoming 18 years of age 1983 thru 1987
Labor Market Area*	5,134	1,822	1,852	1,460	3,629
Green	391	0	249	142	446
Adair	629	0	340	289	701
Hart	1,690	1,124	352	214	702
Larue	926	413	300	213	484
Metcalfe	656	285	224	147	417
Taylor	842	0	387	455	879

*Additional workers may be drawn from other nearby counties.

Note: Not in Labor Force - represents the number of persons who would enter the labor force if suitable employment were available (based on the assumption that persons in Kentucky would like to participate in the labor force in the same proportion that they do nationally). Unemployed - persons unemployed and actively seeking work; Underemployed - persons employed but working only 14 to 26 weeks per year.

Sources: Kentucky Department for Human Resources, Kentucky Labor Supply Estimates by Area Development District and County, 1981. Kentucky Department of Economic Development, Future Labor Supply Becoming 18 Years of Age, 1983 Thru 1987.

ESTIMATED FEMALE LABOR SUPPLY
GREENSBURG LABOR MARKET AREA

Area	Current			Future	
	Total	Not in Labor Force	Unemployed	Under-employed	Becoming 18 years of age 1983 thru 1987
Labor Market Area*	2,969	535	1,026	1,408	3,565
Green	293	0	122	171	469
Adair	385	34	167	184	689
Hart	1,077	497	259	321	657
Larue	372	4	125	243	477
Metcalfe	258	0	165	93	402
Taylor	584	0	188	396	871

*Additional workers may be drawn from other nearby counties.

Note: Not in Labor Force - represents the number of persons who would enter the labor force if suitable employment were available (based on the assumption that persons in Kentucky would like to participate in the labor force in the same proportion that they do nationally). Unemployed - persons unemployed and actively seeking work; Underemployed - persons employed but working only 14 to 26 weeks per year.

Sources: Kentucky Department for Human Resources, Kentucky Labor Supply Estimates by Area Development District and County, 1981. Kentucky Department of Economic Development, Future Labor Supply Becoming 18 Years of Age, 1983 Thru 1987.

AVERAGE WEEKLY WAGES BY INDUSTRY,
BY PLACE OF WORK, 1981

	<u>Green County</u>	<u>Adair County</u>	<u>Hart County</u>
All Industries	\$202.09	\$192.01	\$189.97
Mining & Quarrying	*	361.68	196.84
Contract Construction	213.64	201.59	201.89
Manufacturing	220.74	177.63	219.25
Transportation, Communications & Public Utilities	*	193.49	178.47
Wholesale & Retail Trade	139.31	143.05	158.47
Finance, Insurance & Real Estate	212.14	253.55	210.92
Services	128.60	167.93	152.65
State/Local Government	219.21	252.59	208.34
Other	*	105.47	*

	<u>Larue County</u>	<u>Metcalfe County</u>	<u>Taylor County</u>
All Industries	\$185.98	\$166.34	\$214.12
Mining & Quarrying	0	157.98	224.73
Contract Construction	133.33	118.24	200.61
Manufacturing	193.49	144.06	*
Transportation, Communications & Public Utilities	329.19	290.44	352.72
Wholesale & Retail Trade	153.21	142.03	153.85
Finance, Insurance & Real Estate	236.42	177.46	244.01
Services	137.69	216.54	150.01
State/Local Government	214.48	201.49	216.67
Other	164.65	*	133.67

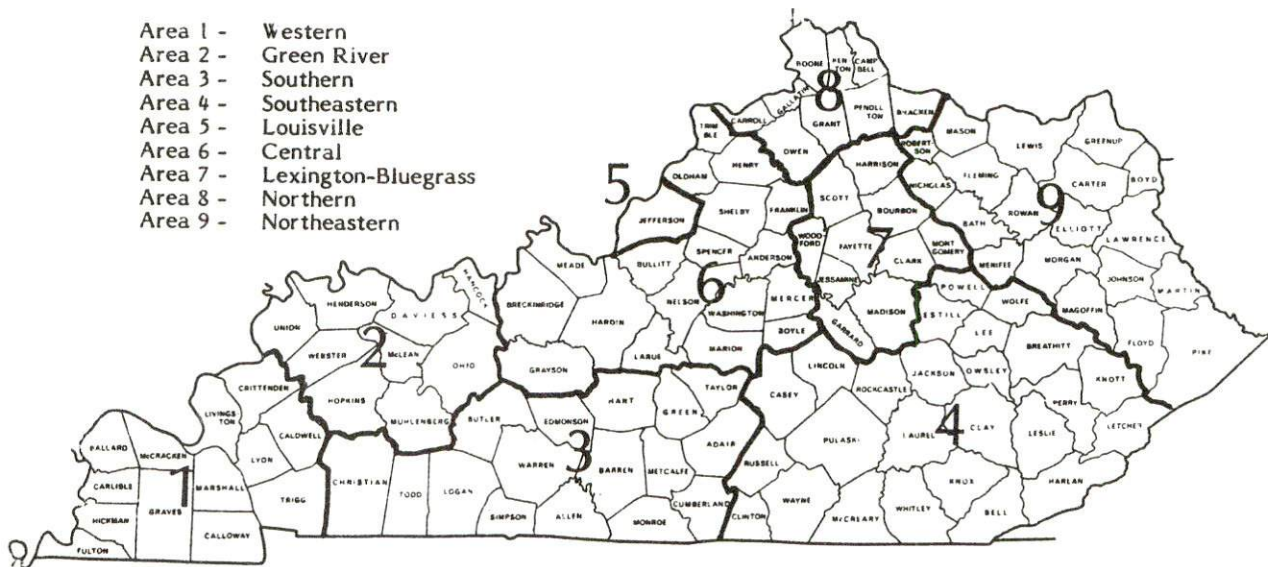
*Not disclosed.

Note: Excludes domestic workers, railway workers, certain nonprofit corporations, majority of federal government workers, and self-employed workers.

Source: Kentucky Department for Human Resources, Average Weekly Wages of Workers Covered by Kentucky Unemployment Insurance Law, 1981.

Occupational wage rates for specific industries are usually not available to most government agencies, and wage data furnished to state employment agencies by individual industrial employers are protected from disclosure by federal law. The most reliable up-to-date wage information can be obtained by direct contact with local employers.

Associated Industries of Kentucky, a voluntary organization of Kentucky businesses, regularly collects occupational wage rates and fringe benefits data from participating member firms. Data are compiled for over 127 clearly defined office, production, and service occupations. Tabulations are published for nine geographical areas of Kentucky, as shown on the map below. It should be noted that the data may be weighted by the preponderance of firms in the larger cities and may be somewhat higher than the rates paid in the smaller communities. Data from these tabulations are available, upon request, from the Kentucky Department of Economic Development, Frankfort, Kentucky 40601.



Associated Industries of Kentucky Area Wage Surveys

PER CAPITA PERSONAL INCOME

<u>Area</u>	<u>1976</u>	<u>1980</u>	<u>Percent Change</u>
Green County	\$4,276	\$5,865	37.2
Labor Market Area			
Range	\$3,431 - 4,658	\$4,453 - 6,459	N/A
Kentucky	5,263	7,662	45.6
U. S.	6,367	9,511	49.4

Source: U. S. Bureau of Economic Analysis, Kentucky Economic Information System, June 1982.

TRANSPORTATION

Rail

The nearest rail service is provided by the Seaboard System Railroad at Campbellsville, 11 miles northeast of Greensburg.

Services - One stop each week, switching facilities, team track space for nine cars. The nearest piggyback facilities are located at Glasgow, 47 miles southwest of Greensburg.*

For details on routing, schedules, rates, and services, contact:

Manager of Industrial Development
Seaboard System Railroad
P. O. Box 32290
Louisville, Kentucky 40232
(502) 587-5228

Highways

Greensburg is served by U. S. Highway 68 and Kentucky Highways 61 and 70. Access to Interstate 65, a major north-south route, is 28 miles west of Greensburg near Munfordville via Kentucky Highways 61 and 83. Another interchange to Interstate 65 is located near Elizabethtown, 38 miles northwest via Kentucky Highway 61. The Cumberland Parkway, a four-lane, east-west toll road, is located 31 miles south of Greensburg via U. S. Highway 68.

*The nearest piggyback service is available at Glasgow, 47 miles from Greensburg. The Seaboard System Railroad provides piggyback service from Glasgow through the Bowling Green ramp with highway service substituted for rail between the two towns. Rates are charged from Glasgow.

Truck Service

<u>Company</u>	<u>Home Office</u>
Central Motor Express, Inc.*	P. O. Drawer C Campbellsville, Kentucky 42718
Claxon Truck Line, Inc.*	453 Versailles Road P. O. Box 678 Frankfort, Kentucky 40602
Overnite Transportation Company**	1000 Semmes Avenue P. O. Box 1216 Richmond, Virginia 23209
Smith's Transfer Corporation**	P. O. Box 1000 Staunton, Virginia 24401
<u>Other Freight Services</u>	<u>Nearest Shipping Center of Home Office</u>
Purolator Courier Corporation***	Louisville, 83 miles distant
United Parcel Service****	Campbellsville, 11 miles distant
KATO Express, Inc. (air cargo service)*****	Elizabethtown, 40 miles distant

HIGHWAY MILES AND TRUCK TRANSIT TIME IN DAYS FROM
GREENSBURG, KENTUCKY, TO SELECTED MARKET CENTERS

City	Delivery		City	Delivery	
	Highway Miles	Time TL		Highway Miles	Time TL
Atlanta, Ga.	381	4	Los Angeles, Ca.	2,164	8
Baltimore, Md.	634	4	Louisville, Ky.	83	1
Birmingham, Ala.	335	4	Nashville, Tenn.	139	3
Chicago, Ill.	375	3	New Orleans, La.	656	4
Cincinnati, Ohio	171	2	New York, N. Y.	796	5
Cleveland, Ohio	410	3	Pittsburg, Pa.	436	4
Detroit, Mich.	430	3	St. Louis, Mo.	340	3
Knoxville, Tenn.	192	3			

Note: Mileage computations are via the best interstate or primary highways, not necessarily the most direct route of travel.

Sources: Rand McNally Road Atlas, 1981. Official Kentucky Mileage Map, 1930. Delivery time - Claxon Truck Line, Frankfort, Kentucky 40601.

*Interstate and intrastate service.

**Interstate service.

***For regular scheduled pickups or for occasional pickups, arrangements must be made with Louisville, Kentucky office of Purolator Courier Corporation.

****For regular scheduled pickups or for occasional pickups, arrangements must be made with the Louisville office of United Parcel Service.

*****Daily pickup and delivery service is available to and from Standiford Field in Louisville. Arrangements for service should be made through the home office in Elizabethtown.

Air

Local

Taylor County Airport
Location: 1 mile northeast of Campbellsville; 12 miles northeast of Greensburg
Runways: 1 paved
Length: 4,000 feet
Traffic
Control: Tetrahedron and wind sock
Lighting: Runway lights 24-hours daily
Services: 100 octane, Jet A50; taxi; restaurant

Nearest Commercial Airline Service

Standiford Field
Location: 4 miles southeast of center of Louisville, Kentucky; 78 miles north of Greensburg
Runways: 3 paved
Length: 7,800 feet; 7,250 feet; 5,000 feet
Traffic
Control: Control tower
Lighting: Runways, obstructions, beacon and approach and touch-down lights, center line on one runway
Services: Continental, Delta, Eastern, Ozark, Piedmont, TWA, United, USAir, Wright, Allegheny Commuter; fuel - 100 and jet; storage; minor A&P repairs; APU, charter, oxygen, survival equipment; taxi, car rentals, limousine, courtesy car, public transit; weather information; restaurant, snack bar
Air Freight
Service: Air freight terminal

Bus - Southern Greyhound Bus Lines

Taxi - One company, 24-hour radio-dispatched service

Rental Services - Trailer and truck rentals; car rentals and U-haul truck and trailer rentals available at Campbellsville, 11 miles away.

Water

The nearest river is the Kentucky River, 76 miles northeast of Greensburg at Lawrenceburg. A six-foot navigation channel is maintained on the Kentucky River from Camp Nelson to its confluence with Ohio River at Carrollton.

POWER AND FUEL

Electricity

Company serving Greensburg and parts of Green County - Kentucky
Utilities Company
Source of power - Kentucky Utilities Company
Total generating capacity - 2,639,100 KW*
For industrial rates contact:

Industrial Development Department
Kentucky Utilities Company
One Quality Street
Lexington, Kentucky 40507
(606) 255-1461

Company serving a major portion of Green County - Taylor County Rural
Electric Cooperative Corporation
Source of power - East Kentucky Power Cooperative
Total generating capacity - 1,304,000 KW
For industrial rates contact:

Industrial Development Division
East Kentucky Power Cooperative
P. O. Box 707
Winchester, Kentucky 40391
(606) 744-4812

and/or

Taylor County Rural Electric Cooperative
Corporation
West Main Street
P. O. Box 100
Campbellsville, Kentucky 42718
(502) 465-4101

*A new generating unit is under construction in Carroll County. Due to be completed in 1984, the unit will have a generating capacity of 511,000 KW.

Natural Gas

Company serving Greensburg - Western Kentucky Gas Company
Source of supply - Tennessee Gas Pipeline Company
Size of transmission mains - 24 and 30 inches (supplier);
4 inches (distributor)
Distribution mains - 1 1/8 thru 4 inches
Distribution pressure - 30 psi
Btu content - 1,000 per cubic foot
Specific gravity - .60
For rates and supplies contact:

Western Kentucky Gas Company
410 East Main Street
Campbellsville, Kentucky 42718
(502) 465-4171

Other Fuels

Propane

Amerigas, Uгите Division
RFD 3
Greensburg, Kentucky 42734

Buckeye Gas Products Company
Highway 208 West
Campbellsville, Kentucky 42718

Amerigas, Uгите Division
Center Street
New Haven, Kentucky 40051

Pargas of Canmer, Inc.
Highway 31E
Canmer, Kentucky 42722

Fuel oils

Ashland Petroleum Company
Columbia Road
P. O. Box 308
Campbellsville, Kentucky 42718

W. W. Long Oil Company, Inc.
Columbia Road
P. O. Box 204
Campbellsville, Kentucky 42718

Gorin & Lobb Oil Company
Water Street
P. O. Box 250
Greensburg, Kentucky 42743

Sexton Oil Company
Broad Street
P. O. Box 147
Campbellsville, Kentucky 42718

Haydon Oil Company
Lebanon Avenue
Campbellsville, Kentucky 42718

White Oil Company
RFD 6
P. O. Box 96
Campbellsville, Kentucky 42718

Phelps Energy
P. O. Box 310
Campbellsville, Kentucky 42718

Residual fuel oil - Arrangements must be made with the refinery.

Low sulphur content coal - Available in Kentucky.

WATER AND SEWERAGE

Public Water Supply

Company serving Greensburg - Greensburg Water Works*
102 East Columbia Avenue
Greensburg, Kentucky 42743
(502) 932-4406

Source - Green River

Treatment plant capacity - 720,000 gallons per day

Average daily consumption - 485,000 gallons

Peak daily consumption - 720,000 gallons

Type treatment - Filtration, coagulation, lime, alum, carbon,
flouride and chlorine added, flash mix and pre-and post-chlorination

Storage capacity - 675,000 gallons including clearwell

Size lines - 1, 2, 3, 4, 6 and 8 inches

Average pressure - 75 psi

Average temperature - 65.6 degrees F.

MONTHLY WATER RATES

First	2,000 gallons	\$5.00 (Minimum)
Next	3,000 gallons	1.90 per M gallons
Next	5,000 gallons	1.70 per M gallons
Next	10,000 gallons	1.50 per M gallons
Next	25,000 gallons	1.30 per M gallons
All over	45,000 gallons	1.10 per M gallons

Tap-on charge:

5/8-inch service	- \$250
1-inch service	- 350
1 1/2-inch service	- 500
2-inch service	- 800

*A study of the Greensburg Water Works System was recently completed by Parrott, Ely and Hurt Consulting Engineers of Lexington, Kentucky. The firm has recommended that the water plant be expanded to double the treatment capacity. Also, they have recommended that a new 300,000-gallon storage tank be built.

Name of water district - Green-Taylor Water District
Route 1
Box 5
Greensburg, Kentucky 42743
(502) 932-4947

Area served - Portions of Green and Taylor Counties
Date when water district began operating - December 1966
Source of supply of treated water - Greensburg Water Works
Average amount of water used in a 24-hour period - 270,000 gallons
Peak amount of water used in a 24-hour period - 270,000 gallons
Storage capacity - 323,200 gallons
Average pressure - 70 psi
Average temperature - 45 to 50 degrees F.
Size lines - 3, 4, 6 and 8 inches

MONTHLY WATER RATES

First	2,000 gallons	\$6.20 (Minimum)
Next	4,000 gallons	2.50 per M gallons
Next	4,000 gallons	1.80 per M gallons
Next	15,000 gallons	1.30 per M gallons
Next	25,000 gallons	.75 per M gallons
Over	50,000 gallons	.60 per M gallons

Tap-on charge: Residential - \$200; commercial
and industrial - varies with size of meter
and installation charges

Raw Water

Surface water sources - Green River and Russell Creek
Average discharge - Green River near Campbellsville, 1,103 cfs,
(19 years unadjusted, USGS); Russell Creek near Columbia 293
cfs, (42 years, USGS)
Expected ground water yield - 50 to 200 gpm in west central portion
of county; 5 to 50 gpm in northern and southern portions of
county; 5 or less gpm in south central and east central
portions of county

Sewerage

Company serving Greensburg - Greensburg Municipal Sewage Treatment Plant
102 East Columbia Avenue
Greensburg, Kentucky 42743
(502) 932-4406
Design capacity - 864,000 gallons per day
Average daily flow - 350,000 gallons
Treatment - Secondary
Type treatment - Aeration
Treated effluent discharged into - Green River
Size of sanitary mains - 4, 6, 8 and 10 inches
Rates - 50 percent of monthly water bill
Tap-on charge: \$200

CLIMATE

Green County

Temperature

Normal (30-year record)	55.2 degrees
Average annual 1981	54.2 degrees
Record highest, September 1954 (37-year record)	103.0 degrees
Record lowest, January 1963 (37-year record)	-21.0 degrees
Normal heating degree days (30-year record)	4,729
(Heating degree day totals are the sums of negative departures of average daily temperatures from 65 degrees F.)	

Precipitation

Normal (30-year record)	44.49 inches
Mean annual snowfall (37-year record)	16.70 inches
Total precipitation 1981	36.65 inches
Mean number days precipitation (.01 inch or more) (37-year record)	130
Mean number days thunderstorms (37-year record)	46

Prevailing Winds (17-year record)

South

Relative Humidity

1 a.m.	77 percent (17-year record)
7 a.m.	81 percent (18-year record)
1 p.m.	60 percent (18-year record)
7 p.m.	64 percent (18-year record)

Source: U. S. Department of Commerce, Environmental Science Services Administration, Climatological Data, 1981.
Station of record: Lexington, Kentucky.

LOCAL GOVERNMENT

City

Structure - Mayor - 4-year term; 6 council members - 2-year terms
Budget 1982 - General Fund \$244,000
 Water and Sewer Fund 286,200
Fees and licenses - Unloading license \$10 to \$50; motor vehicle
 tax \$20 annually

County

Structure - County/Judge Executive - 4-year term;
 5 magistrates - 4-year terms
Budget 1982-83 - General Fund \$232,250; Road Fund \$318,039

Assessed Value of Property, 1982*

<u>Classes of Property</u>	<u>Greensburg</u>	<u>Green County</u>
Real Estate	\$20,019,700	\$94,032,817
Tangibles	3,375,200	19,503,027

Property Taxes

All property in Kentucky is assessed at 100 percent of fair cash value.

Land and buildings are taxed by the state and may be taxed by local jurisdictions. The state rate is \$0.224 per \$100 of assessed valuation.

Manufacturing machinery, raw materials inventories, pollution control equipment, and goods in the process of manufacture are not subject to local taxation. The state rate is \$0.15 per \$100.

Other tangible personal property owned by manufacturers (automobiles, trucks, finished goods, office furniture, office equipment) is taxed by the state at \$0.45 per \$100 and may be taxed by local jurisdictions.

Intangible personal property located in Kentucky (money in hand, shares of stock, notes, bonds, accounts receivable, and other credits) is taxed by the state at \$0.25 per \$100, and is not subject to local taxation.

Property stored in public warehouses in a transit status is not subject to local taxation. The state rate is only \$0.015 per \$100.

Private leaseholds in industrial facilities owned by cities or counties and financed by industrial revenue bonds are subject to a state tax of \$0.015 per \$100 of value (essentially the lessee's equity, adjusted for appreciation or depreciation). Local taxation is not permitted.

*Excludes Homestead Exemptions.

Combined State and Local Rates Per \$100 Valuation, 1982*
 (100% assessment)

	<u>Site Inside City of Greensburg and within the Green County School District</u>	<u>Site Inside Unincorporated Green County</u>
1. Land and buildings	\$0.8998	\$0.6338
2. Mfg. machinery, raw materials, goods in process, pollution control equipment	0.1500	0.1500
3. Finished goods, office equipment, vehicles, other tangibles	1.1758	0.9098
4. Intangibles (accounts rec., notes, bonds, etc.)	0.2500	0.2500
5. Property stored in public warehouses in a transit status	0.0150	0.0150
6. Leaseholds in industrial revenue bond financed plants	0.0150	0.0150

Planning and Zoning

Joint agency - Greensburg Planning and Zoning Commission
 Zoning enforced - Within the city limits of Greensburg
 Subdivision regulations enforced - Within the city limits and five miles beyond
 Local codes enforced - Building and housing (within city limits only)
 Mandatory state codes enforced - Kentucky Plumbing Code, National Electric Code, Kentucky Boiler Regulations and Standards, Kentucky Building Code (modeled after BOCA code)

*Kentucky Department of Economic Development.

Safety

<u>Police</u>	<u>Greensburg</u>	<u>Green County</u>
Total staff	5 full-time 1 part-time	4
Radio-patrol cars	2	3

Fire

Insurance Services Office, Public Protection Classification	7	10
Volunteers	30	30

Rescue Service

Green County Disaster and Emergency Services and Rescue Service
Number of volunteers - 30
Equipment - Rescue van, 2 four-wheel drive rescue vehicles, 2 trucks,
CB radio, walkie-talkies, generators, chain saws, port-a-power,
come-along, lights, and various kinds of first aid equipment
Personnel training - First aid training, cardiopulmonary resuscitation
training, emergency medical technician training, police training
and fire schools

Refuse Collection and Disposal

	<u>Greensburg</u>
Type service	Municipal
Fee charged:	
residential	\$4 per month
business	\$10 per month
industrial	\$10 per month (inside city limits) \$20 per month (outside city limits)
Collection frequency:	
residential	Weekly
business	As needed
industrial	As needed
Trash pickup	Weekly
Disposal method	Landfill

EDUCATION

Public Schools

Green County

Total Enrollment (May 1982)	1,760
Elementary	1,152
High School	608
Student-Teacher Ratio	19-1
Elementary	19-1
High School	20-1
Percent High School Graduates to College (1981)	29.6
Expenditures Per Pupil (1980-81)	\$1,342.26
Bonded Indebtedness (June 30, 1981)	\$1,394,000

Area Colleges and Universities

<u>Name</u>	<u>Location (Miles distant)</u>	<u>Enrollment (Fall, 1981)</u>	<u>Highest Degree Conferred</u>
Campbellsville College	Campbellsville (11)	712	Baccalaureate
Lindsey Wilson College	Columbia (20)	418	Associate
Elizabethtown Community College	Elizabethtown (40)	1,967	Associate
Saint Catharine College	Saint Catharine (42)	246	Associate
Centre College	Danville (62)	685	Baccalaureate
Somerset Community College	Somerset (62)	1,065	Associate
Western Kentucky University	Bowling Green (69)	13,174	Masters, Specialist/ Doctorate*

*Joint doctoral degree programs are offered in cooperation with the University of Kentucky, Lexington, and cooperative doctoral degree programs are offered with the University of Louisville.

Vocational Schools

Both the state vocational-technical schools and the area vocational education centers are operated by the Kentucky Department of Education. The state vocational-technical schools enroll persons full time who are at least 16 years of age and not in school. These students attend classes for six hours each day. The area vocational education centers are designed to accommodate high school students who are at least 15 years of age. These students attend vocational school for three hours each day. The state vocational-technical schools and the area education centers offer evening courses to enable working adults to upgrade current job skills.

Nearest State School

Location	Elizabethtown State Vocational-Technical School
Miles Distant	Elizabethtown
Curriculum	40
	Business and Office
	Clerical
	Secretarial
	Consumer and Home Economics
	Commercial Foods
	Industrial Education
	Appliance Repair
	Auto Mechanics
	Carpentry-Building Trades
	Commercial Heating and Air Conditioning
	Drafting
	Industrial Electricity
	Industrial Maintenance
	Machine Shop
	Radio and Television Repair
	Welding

Nearest Area Education Center

Location	Green County Area Vocational Education Center
Curriculum	Greensburg
	Business and Office
	Clerical
	Secretarial
	Health & Personal Services Occupations
	Health Services
	Industrial Education
	Auto Body Repair
	Auto Mechanics
	Carpentry-Building Trades
	Electricity
	Machine Shop
	Welding

Arrangements can be made to provide training in the specific production skills required by an industrial plant. Instruction may be conducted either in the vocational school or in the industrial plant, depending upon the desired arrangement and the availability of special equipment.

HEALTH

Local Medical Personnel

Physicians - 7
Dentists - 3

Hospitals

<u>General Hospital</u>	<u>Location</u>	<u>Beds</u>
Jane Todd Crawford Memorial Hospital	Greensburg	44

General hospital facilities - Diagnostic nuclear medicine, ultrasound, electroencephalogram, physical therapy, full-time weekend emergency physicians, X-ray, laboratory, blood bank, operating room, emergency room, emergency outpatient service, recovery room, inhalation therapy, labor and delivery room, nursery, pharmacy, Brain CAT Scan, Alcohol Rehabilitation program, medical explorer post, skilled nursing facility affiliated with hospital.

Medical staff - 5 doctors, 13 registered nurses, 9 licensed practical nurses, 1 surgeon, 1 nurse midwife

Ambulance Service

Name - JMJ Emergency Medical Service
Staff - 9
Service - 24-hour
Equipment - 3 ambulances

Public Health

Facility - Green County Health Department
Staff - Nurse, health environmentalist, 2 clerks

OTHER LOCAL FACILITIES

Communications

Telephone - General Telephone Company of Kentucky
Services - Standard

Telegraph - Western Union - Campbellsville, 11 miles distant
Services - Toll-free number, 1-800-325-5100

Postal - U. S. Post Office
Class - Second
Mail received - Once daily
Mail dispatched - Once daily

Newspapers - The Greensburg Record-Herald
Weekly and circulation - 4,400
Other papers
received from - Campbellsville and Louisville, Kentucky

Radio - WGRK-AM & FM
Stations received from - Campbellsville, Columbia, Glasgow, Lebanon
and Louisville, Kentucky; Nashville,
Tennessee

Television -
Cable service
Reception from - Bowling Green, Lexington and Louisville, Kentucky;
Atlanta, Georgia; Chicago, Illinois; and Nashville
Tennessee
Kentucky Educational
Television - Channel 23, Elizabethtown transmitter

Library Services

Public library - Green County Public Library
Size collection - 23,534 volumes
Circulation, 1981-82 - 43,570
Services - Periodicals, records, film strips, bookmobile,
genealogy department, and copy machine

Religious Institutions

Denominations - Baptist
Catholic
Christian
Church of Christ
Church of God
Cumberland Presbyterian
Faith Assembly of God
Methodist
Pentecostal
Presbyterian USA

Nearest Synagogues - Louisville, 83 miles north
Congregations - Adath Israel (reform)
Adath Jeshurun (conservative)
Anshei Sfard (orthodox)
Brith Sholom (reform)
Keneseth Israel (orthodox)

Financial Institutions

<u>Banks</u>	<u>Assets</u>	<u>Deposits</u>	<u>Statement Date</u>
Greensburg Deposit Bank	\$36,134,217.59	\$30,947,375.35	6/30/82
The Peoples Bank and Trust Company	34,312,622.36	30,053,321.98	6/30/82

<u>Savings and Loan Associations</u>	<u>Assets</u>	<u>Savings Accounts</u>	<u>Statement Date</u>
The First Federal Savings and Loan Association	\$123,284,584.00	\$102,529,439.00	12/31/81

Hotels and Motels

Total number - 1
Total rooms - 34

Clubs and Organizations

American Legion
American Legion Auxiliary
Am-Vets
Art Club
Babe Ruth League
Beta Club
Boy Scouts
Business and Professional Women
Co-ed Y
Cub Scouts
Eastern Star
4-H
Future Farmers of America (FFA)
Future Homemakers of America (FHA)
Future Teachers of America (FTA)
Garden Club
Girl Scouts
Greensburg-Green County Chamber of Commerce
Homemakers
Jane Todd Hospital Auxiliary
Lions
Little League
Masons
Minor League
Rotary
T-Ball League

RECREATION

Local

Greensburg has the Green County American Legion Park, a 65-acre community park, which has been developed and financed by local residents. The park has a swimming pool, ball fields, air-conditioned dining room, pavillion, fishing area, horse show ring, horseshoe pits, tennis courts, picnic area and equipped playground. Four other tennis courts are located at the elementary school.

Other recreational opportunities in Green County are provided by a 9-hole golf course, an archery range, two lighted tennis courts, the Green County Sportsman Club, the Green County Saddle Club, a drive-in movie theater, and two skating rinks.

Many historical and architectural points of interest are located in Green County. Greensburg has the oldest courthouse west of the Alleghenies. The building was started in 1799 and completed four years later. The two-story structure has recently been renovated and is now open to the public. Other points of interest include the home of Jeremiah Abell, Presbyterian minister who served as missionary and pastor in Green and surrounding counties during the early 1800's; the site of the home of Jane Todd Crawford on whom Dr. Ephraim McDowell performed the first successful ovariectomy in 1809; General E. H. Hobson's Home; a Court Clerk's office built in 1818; a water powered sawmill; Mt. Gilead Church which is built on the site of the camp of the "Long Hunters" who came to Kentucky in 1769; the Old Bank Building which originally housed the Bank of Kentucky; Old Vaughn or Allen's Inn; Pendleton House; Ben Will Penick House; Shreve House, which originally housed the Greensburg Academy; Simpson House, the birthplace of Abraham Lincoln's law partner; and a scenic footbridge.

Area (Within 40 miles)

Green River Lake State Park near Campbellsville, 11 miles east of Greensburg is made up of 1,300 acres surrounding an 8,200-acre lake. The park is open all year-round and offers 96 campsites, a beach, boat docks, fishing, swimming, and a picnic area.

Abraham Lincoln Birthplace National Historic Site, located 28 miles northwest of Greensburg near Hodgenville, features the log cabin, which was the birthplace of Abraham Lincoln, enclosed within a granite memorial shrine. The grounds include 116-acres of the original Thomas Lincoln farm and a visitors' center with audiovisual programs and exhibits on the Lincoln family.

Lincoln Homestead State Park, 39 miles north of Greensburg near Springfield, is a 153-acre park on the original land settled by Abraham Lincoln's family. The actual building in which Nancy Hanks, mother of President Lincoln, lived during her courtship with Thomas Lincoln is preserved here as well as a replica of the 1782 cabin where Lincoln lived as a boy. The park also has a museum, a gift shop, a picnic area, and an 18-hole golf course.

Lake Cumberland State Resort Park at Jamestown, 40 miles southeast of Greensburg, is a 3,000-acre park located on the 50,000-acre Lake Cumberland, which sports excellent bass, bluegill, and crappie fishing. The park features a modern resort lodge which is perched on a high bluff above the lake. The lodge has a swimming pool, a dining room, a gift shop, and a multi-purpose convention center. Other park facilities include an additional swimming pool, riding stables, tennis courts, hiking trails, a 9-hole golf course, miniature golf, a picnic area, a playground, a 350-seat amphitheater, and a nature center. A marina offers houseboats, and fishing boats and motors for rent plus year-round launching ramps.

Mammoth Cave National Park is located 40 miles southwest of Greensburg near Cave City. Beneath 51,000 park acres, Mammoth Cave is among the major tourist attractions of all times. It is one of the largest cave networks ever discovered, with at least 150 miles charted on five levels and vast areas not yet mapped. Some famous sights are Snowball Dining Room (267 feet below surface), Frozen Niagara, Crystal Lake, and Bottomless Pit. The park also features scenic boat trips on the Green River and nature and hiking trails. Park accommodations include a hotel with distinctive gift shops featuring native Kentucky and Southern Highland handicrafts, a motor lodge, hotel cottages, woodland cottages, and a hotel annex with budget accommodations and craft shop featuring live exhibits of broom making and weaving. Other park facilities include the hotel dining room and coffee shop, a service center, group meeting facilities, a campground, a picnic area, and tennis and shuffleboard courts.