

1974

Industrial Resources: Hardin County - Radcliff & Vine Grove

Kentucky Library Research Collections
Western Kentucky University, spcol@wku.edu

Follow this and additional works at: https://digitalcommons.wku.edu/hardin_cty



Part of the [Business Administration, Management, and Operations Commons](#), [Growth and Development Commons](#), and the [Infrastructure Commons](#)

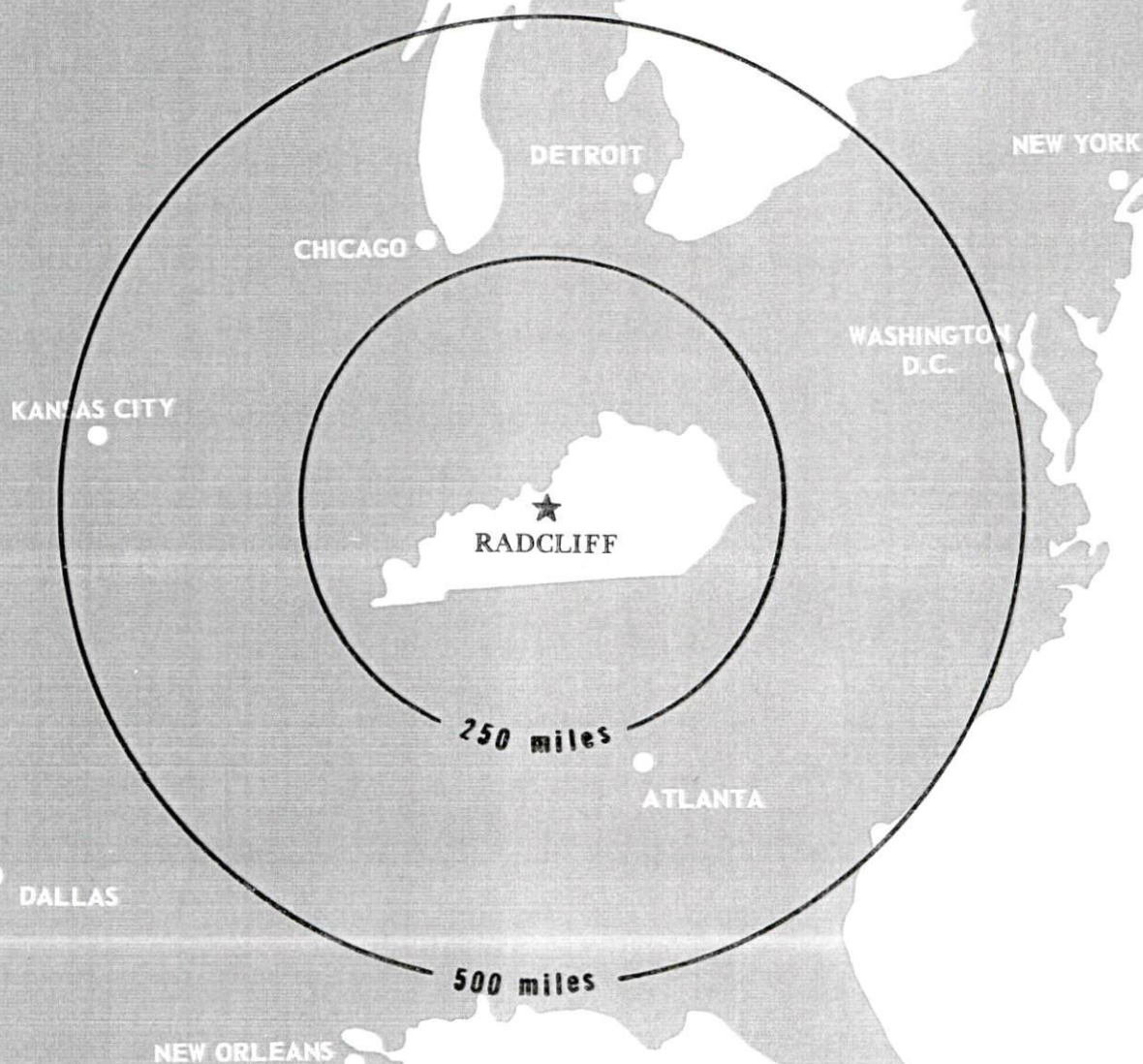
Recommended Citation

Kentucky Library Research Collections, "Industrial Resources: Hardin County - Radcliff & Vine Grove" (1974). *Hardin County*. Paper 1.
https://digitalcommons.wku.edu/hardin_cty/1

This Report is brought to you for free and open access by TopSCHOLAR®. It has been accepted for inclusion in Hardin County by an authorized administrator of TopSCHOLAR®. For more information, please contact topscholar@wku.edu.

INDUSTRIAL RESOURCES

RADCLIFF & VINE GROVE KENTUCKY



HARDIN COUNTY, KENTUCKY

RADCLIFF INDUSTRIAL SITES

1974

For more information about the following sites, contact Bob Shipp, Hardin Insurance Agency, Radcliff, Kentucky; or the Kentucky Department of Commerce Capital Plaza Office Tower, Frankfort, Kentucky.

SITE #1: ACREAGE: 100 acres
LOCATION: Partially within northwest city limits
ZONING: Heavy industrial
HIGHWAY ACCESS: Proposed permanent access to Flaherty-Otter Creek Road approximately 4,000 feet north of site
RAILROAD: Illinois Central Gulf Railroad along eastern boundary of site
WATER: Hardin County Water District No. 1
SIZE LINE: 14-inch line passes through center of site
GAS: Louisville Gas and Electric Company
SIZE MAIN: 8-inch main approximately 450 feet from southeast corner of site along north side of Kentucky 391
ELECTRICITY: Nolin RECC
SEWERAGE: City of Radcliff Sewerage System
SIZE LINE: 8-inch line approximately 125 feet from southeast boundary of site
OWNERSHIP: Radcliff Industrial Foundation, Inc.

SITE #3: ACREAGE: 10 acres
LOCATION: Within eastern city limits
ZONING: Light industrial
HIGHWAY ACCESS: Paved city street to U. S. 31-W
RAILROAD: Not rail served
WATER: Hardin County Water District No. 1
SIZE LINE: 10-inch line at center of southern boundary
GAS: Louisville Gas and Electric Company
SIZE MAIN: 4-inch main approximately 250 feet from southwest corner of site
ELECTRICITY: Kentucky Utilities Company
SEWERAGE: City of Radcliff Sewerage System
SIZE LINE: 8-inch line at center of southern boundary
OPTIONED BY: Radcliff Industrial Foundation, Inc.

SITE #5: ACREAGE: 17 acres
LOCATION: Partially within southern city limits
ZONING: Residential
HIGHWAY ACCESS: Paved road to U. S. 31-W located approximately 250 feet west of site
RAILROAD: Not rail served
WATER: Hardin County Water District No. 1
SIZE LINE: 10-inch line approximately 850 feet west of site along east side of U. S. 31-W
GAS: Louisville Gas and Electric Company
SIZE MAIN: 4-inch main approximately 900 feet west of site along west side of U. S. 31-W
ELECTRICITY: Kentucky Utilities Company or Nolin RECC
SEWERAGE: City of Radcliff Sewerage System
SIZE LINE: 8-inch line approximately 1,650 feet southwest of site
OWNERSHIP: Private

VINE GROVE INDUSTRIAL SITES

1974

For more information about the following sites, contact Mr. A. J. Emerine, Farmers Bank, Vine Grove, Kentucky; or the Kentucky Department of Commerce, Capital Plaza Office Tower, Frankfort, Kentucky.

SITE #4: ACREAGE: 100 acres

LOCATION: Within northern city limits

ZONING: Agricultural

HIGHWAY ACCESS: Kentucky 144-391 approximately 1,850 feet east of site

RAILROAD: Illinois Central Gulf Railroad along western border

WATER: Vine Grove Water and Sewer Company

SIZE LINE: 6-inch line approximately 400 feet from southwest corner of site across Illinois Central Gulf Railroad

GAS: Louisville Gas and Electric Company

SIZE MAIN: 8-inch main approximately 1,850 feet southeast of site along north side of Kentucky 144-391

ELECTRICITY: Kentucky Utilities Company

SEWERAGE: Vine Grove Water and Sewer Company

SIZE LINE: 8-inch line approximately 600 feet from southwest boundary

OWNERSHIP: Private

SITE #5: ACREAGE: 115 acres

LOCATION: Within northern city limits

ZONING: Agricultural

HIGHWAY ACCESS: Kentucky 144-391 along southeastern boundary of site

RAILROAD: Illinois Central Gulf Railroad approximately 1,700 feet west of site

WATER: Vine Grove Water and Sewer Company

SIZE LINE: 6-inch line along southeast boundary of site and along north side of Kentucky 144-391

GAS: Louisville Gas and Electric Company

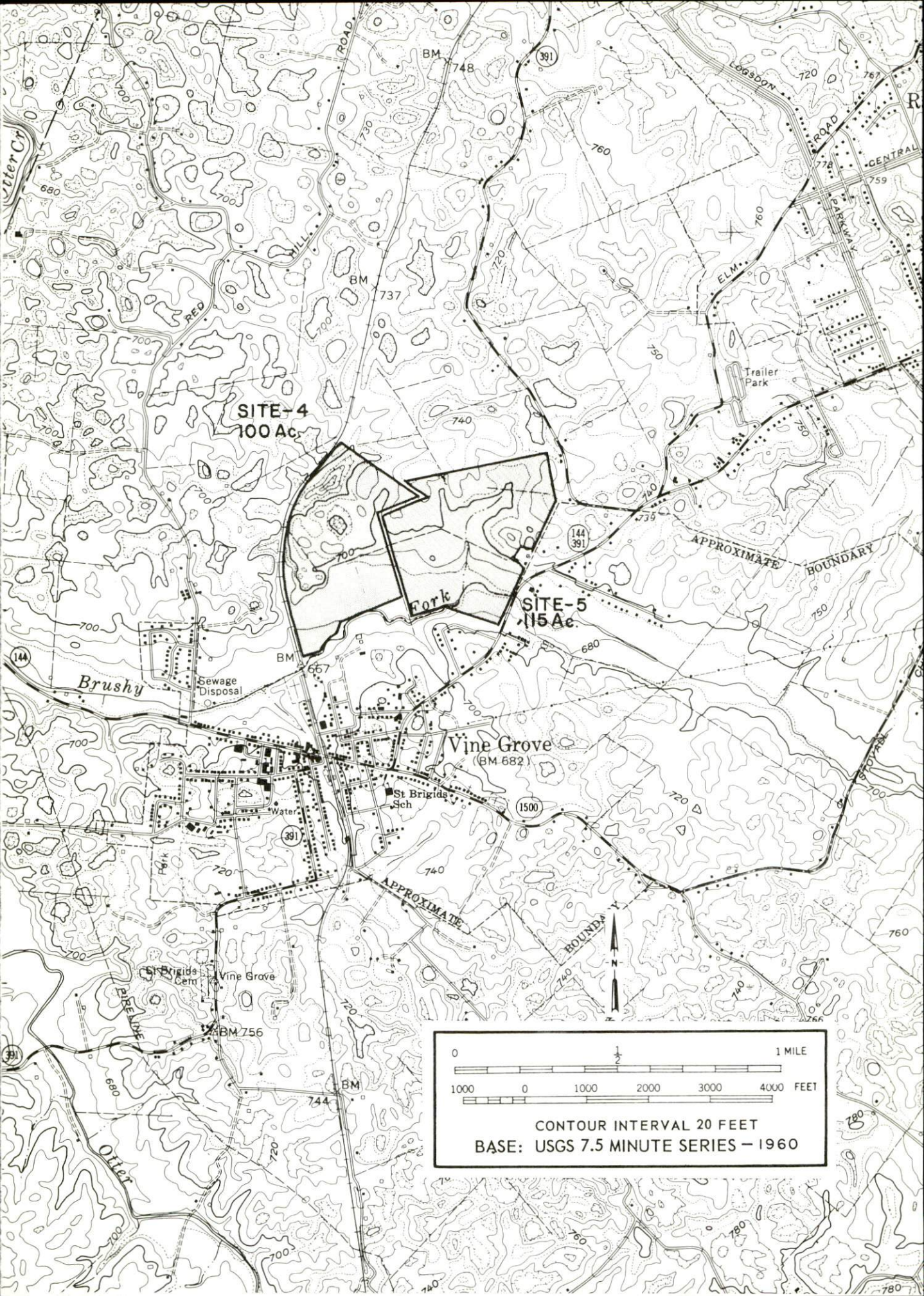
SIZE MAIN: 8-inch main along southeast boundary of site and along north side of Kentucky 144-391

ELECTRICITY: Kentucky Utilities Company and Nolin RECC

SEWERAGE: Vine Grove Water and Sewer Company

SIZE LINE: 8-inch line approximately 2,200 feet from southeast corner of site

OWNERSHIP: Private



SITE-4
100 Ac

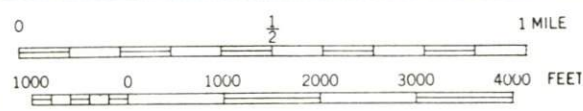
SITE-5
115 Ac

Fork

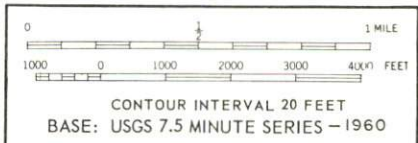
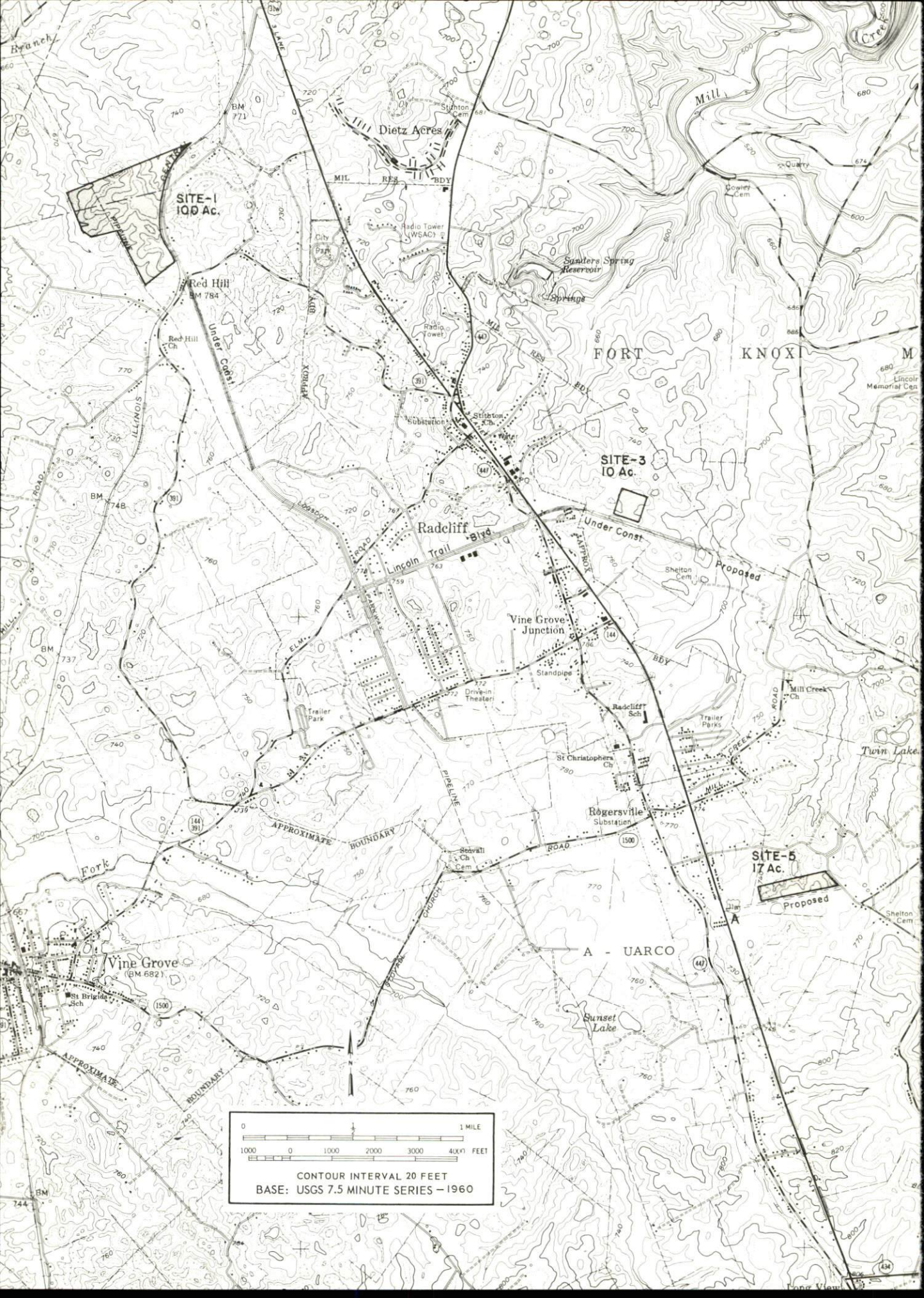
Brushy

Vine Grove
(BM 682)

APPROXIMATE
BOUNDARY



CONTOUR INTERVAL 20 FEET
BASE: USGS 7.5 MINUTE SERIES - 1960



INDUSTRIAL RESOURCES
RADCLIFF AND VINE GROVE, KENTUCKY

Dept. of Commerce

Prepared by
The Kentucky Department of Commerce
in cooperation with
The Radcliff Chamber of Commerce
and
The City of Vine Grove

1974

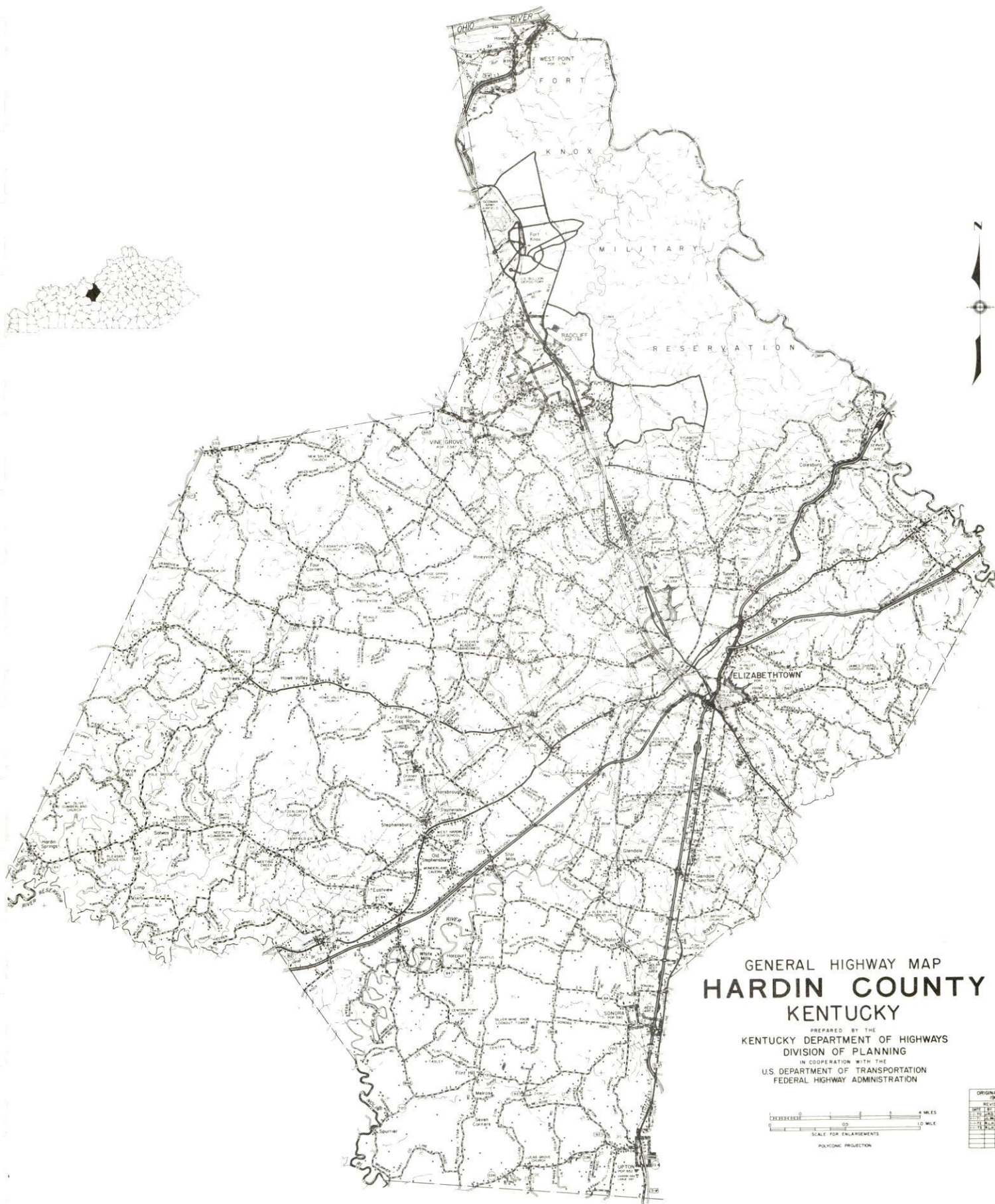
6-7-74

This copy has been prepared by the Kentucky Department of Commerce,
Division of Research and Planning, and the cost of printing paid from
state funds.

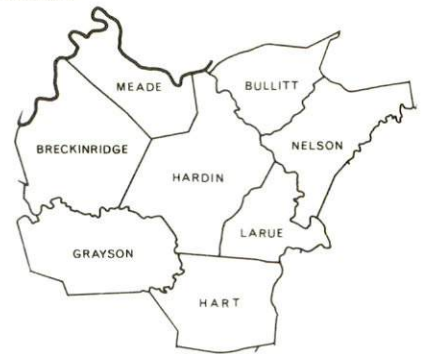
TABLE OF CONTENTS

<u>Chapter</u>	<u>Page</u>
INDUSTRIAL SITES.	i
RADCLIFF AND VINE GROVE, KENTUCKY - A RESOURCE PROFILE	1
THE LABOR MARKET	6
Population Trends	6
General Employment Characteristics, 1972.	6
Manufacturing Employment Trends by Industry	7
Radcliff Manufacturing Firms, Their Products and Employment	7
Wages	8
Labor Organizations	9
Estimated Male Labor Supply	9
Estimated Female Labor Supply	9
Per Capita Personal Income	10
TRANSPORTATION.	11
Rail	11
Truck Service	11
Air.	13
Bus	13
Taxi	13
Rental Services	13
POWER AND FUEL.	14
Electricity	14
Natural Gas	14
Other Fuels	15
WATER AND SEWERAGE	16
Water	16
Sewerage	18
LOCAL GOVERNMENT	21
City	21
County	21
Assessed Value of Property, 1973	21

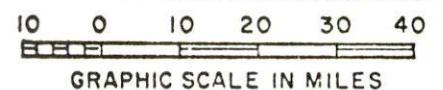
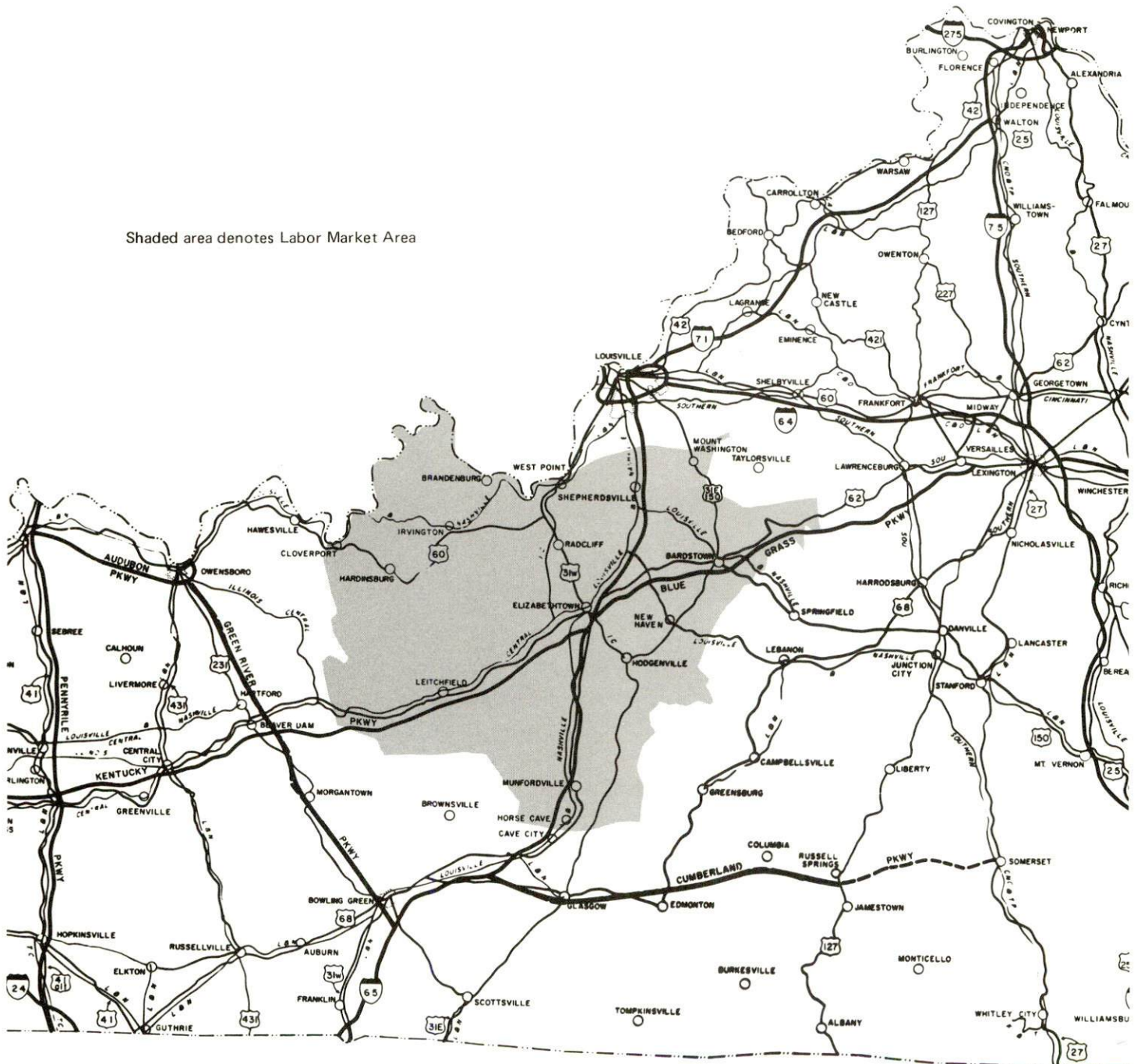
<u>Chapter</u>	<u>Page</u>
Property Taxes	22
Local Property Tax Rate Per \$100 of	
Assessed Valuation, 1973	22
Utilities Gross Receipts Tax for Schools	22
Planning and Zoning	22
Safety	23
Police	23
Fire	23
Civil Defense	23
Sanitation	24
EDUCATION	25
Public Schools	25
Nonpublic Schools	25
Vocational Schools	25
Colleges and Universities	26
HEALTH	27
Hospitals	27
Nursing Homes	27
Public Health	27
OTHER LOCAL FACILITIES	28
Communications	28
Library Services	28
Religious Institutions	33
Financial Institutions	33
Hotels and Motels	34
Clubs and Organizations	34
RECREATION	35
Local	35
Area	35
AGRICULTURE - NATURAL RESOURCES - CLIMATE	36
Agriculture	36
Natural Resources	36
Climate	37
HISTORY	38



RADCLIFF AND VINE GROVE LABOR MARKET AREA



Shaded area denotes Labor Market Area



RADCLIFF AND VINE GROVE, KENTUCKY - A RESOURCE PROFILE

Radcliff, with a 1970 population of 7,881, is a rapidly growing community located in Hardin County in north central Kentucky. Radcliff is only 34 miles south of Louisville, Kentucky; 147 miles southwest of Cincinnati, Ohio; 146 miles northeast of Nashville, Tennessee; and 298 miles southeast of St. Louis, Missouri.

Vine Grove, located 4 miles west of Radcliff, had a 1970 population of 2,987.

Hardin County, covering a land area of 616 square miles, is bound on the north by the Ohio River; on the east by Bullitt, Nelson and Larue Counties; on the south by Hart County; on the west by Grayson, Breckinridge and Meade Counties, and on the northeasternmost part by Jefferson County. North Hardin County is the location of Fort Knox, a U. S. Army reservation and depository of the nation's gold reserve. Covering 110,000 acres, the reservation reaches into two adjoining counties. In 1970 Hardin County had a population of 78,421.

The Economic Framework

Total employment in Hardin County in 1972 averaged 20,370 with agriculture providing 1,160 jobs, manufacturing 2,510, trade and services 4,830, and government 7,840. Since 1963 manufacturing employment increased by 322 percent or 1,993 jobs. Major industrial products in the county are: electric timing devices, motors and program switches; auto V-belts and curved auto hose; silicone sealants; ceramic and alnico magnets; and men's slacks.

Per capita income in the county in 1971 was \$4,402. Between 1961 and 1971, per capita personal income in the county increased approximately 157 percent.

The Radcliff and Vine Grove labor market area includes Hardin, Breckinridge, Bullitt, Grayson, Hart, Larue, Meade, and Nelson Counties. Area employment in 1972 totaled 50,840 jobs with agriculture providing 7,990, manufacturing 7,730, trade and services 10,050, and government 11,760. Manufacturing employment in this area has increased approximately 111 percent since 1963 with sharpest gains in apparel, rubber, machinery, metal products, and paper industries.

This area has a deficit of 10,711 manufacturing jobs when measured against the national industrial employment-population ratio. This indicates an area with a potential for additional manufacturing production.

Resources for Growth

1. Labor supply - There is a current estimated labor supply of 7,580 men and 10,210 women available for industrial jobs in the labor market area. In addition, 10,615 young men and 10,130 young women will become 18 years of age by 1980 and potentially available for work.

2. Transportation - The local transportation capability is good. The Illinois Central Gulf Railroad serves the Vine Grove and Radcliff area. Adequate trucking service is available. Quick access to Interstate 65, the Blue Grass Parkway, and the Western Kentucky Parkway is provided by four-lane U.S. 31-W. Ben Floyd Field, 7 miles south of Radcliff, has a 2,800-foot paved runway capable of accommodating light aircraft. Commercial air service is available at Standiford Field, Louisville, only 34 miles north of Radcliff.

3. Power and fuel - Kentucky Utilities Company provides electric power to Radcliff and Vine Grove. Nolin RECC serves Hardin County. Natural gas service is provided to Radcliff and Vine Grove by the Louisville Gas & Electric Company, whose source of supply is the Texas Gas Transmission Corporation. Several distributors of propane, butane, and distillate fuel oil are located near Radcliff and Vine Grove.

4. Education - Education is an important growth asset for Hardin County. Three school systems operate in the county. Radcliff and Vine Grove are located in an area served by the Hardin County School System.

Two universities, three senior colleges, three community colleges, and one junior college are located within 60 miles of Radcliff.

The nearest state vocational-technical school is located in Elizabethtown, 11 miles from Radcliff, and offers training in six different courses.

Community Programs for Improvement

Radcliff Underway

A four-lane extension of Lincoln Trail Boulevard east is now under construction. When completed the road will connect with South Boundary Road. Plans include curbs and sidewalks for the entire length of the extension. The first phase is now underway with paving, curbs and sidewalks for approximately three-fourths mile to be completed by the summer of 1974. A one-half mile extension of Lincoln Trail Boulevard west is also under construction and is to be paved.

A 1 mile, four-lane extension of Logsdon Parkway is under construction. The extension, which is to be paved, connects with Kentucky 391.

Hardin County Water District No. 1, which supplies treated water to Radcliff, is in the first stage of a three-phase plan to double the treatment capacity of the Muldraugh treatment plant.

Sanitary mains are being extended into areas not previously served. This increase to the service area will cost approximately \$150,100.

New housing construction and subdivision development is underway.

Recent

UARCO, Inc., manufacturing business forms, located in Radcliff in 1972.

A new football complex has been constructed at North Hardin High School.

Thirteen Business Improvement Awards were presented during 1973.

The police department has a new radio-equipped patrol car and new teletype equipment.

Three new church buildings have recently been constructed.

Eight new lift stations were put into operation during 1973.

Planned

Ground breaking and dedication ceremonies were recently held for a new city hall to be located on Lincoln Trail Boulevard, and for a new fire station to be located on south Wilson Road.

Plans are underway to establish a library.

Vine Grove Underway

The city is purchasing 11.2 acres to be developed as a recreational area. The project will include a softball and a baseball area, picnic tables, shuffleboard, tennis courts, and playground equipment.

Approximately 28 houses are under construction.

Recent

A new building recently completed is now housing a dentist's office.

The Kentucky Marble Company located in Vine Grove in 1973.

New businesses in Vine Grove include an auto parts business and a car wash facility.

New construction includes a cafeteria and kitchen at North Hardin Junior High School.

Planned

Application has been filed for a \$1,464,000 sewerage improvement project which includes a new sewage treatment plant designed for a population of 6,000, and 2,600+ feet of new 6- through 15-inch mains.

Application has been filed for a \$2,136,000 water improvement project which includes a new 750,000 gallon per day water treatment plant and a 200,000-gallon elevated tank.

5,000 KVA Vine Grove RECC substation will be increased to 10,000 KVA in 1974.

Recreation, Entertainment and Livability

Radcliff and Vine Grove are located within 60 miles of numerous recreational facilities and spectator attractions.

Green River Lake State Park offers fishing, boating, swimming, a picnic area and a beach at Lone Valley. Facilities also include a marina, parking areas, ramps and rest rooms.

Bernheim Forest is a privately operated 10,000-acre natural forest that is stocked with deer, wild turkey, grouse and quail. Facilities include a picnic area, foot trails, fishing, nature center, and museum.

Nolin Dam and Reservoir provides flood control for the Nolin River Basin. The dam is 166-feet high and 908 feet long. The reservoir is 25 miles long at minimum level and 57 miles long at maximum level. Recreation facilities being developed on 1,023 acres of park area include fishing, hiking, boating, camping, and picnicking.

Rough River Dam State Resort Park is a 9,234-acre resort-type park on Rough River Reservoir with lodge, cottages and camping accommodations. Facilities and recreation include a lodge, pool, beach, bathhouse, boat and and motor rentals, paddle boats, fishing, miniature golf, tennis, hiking, shuffleboard, picnic shelter, playground area, supervised recreation and a 2,500-foot paved airstrip inside the park.

My Old Kentucky Home State Park was originally called Federal Hill and was the home of Judge John Rowan. Here in 1852 Judge Rowan's young Pittsburgh cousin, Stephen Collins Foster, was inspired to compose his immortal melody "My Old Kentucky Home" which later became the official song of Kentucky. Park facilities include: gift shop, amphitheatre, golf course, playground area and camp facilities.

The Patton Museum of Cavalry and Armor in beautifully wooded Keys Park was opened at Fort Knox in 1949. The museum contains cavalry and armor displays from the Revolutionary War to Vietnam. Of special interest are the personal effects of General George C. Patton, for whom the museum was named.

Abraham Lincoln Birthplace National Historic Site grounds include 100 acres of original Thomas Lincoln farm where Abraham Lincoln was born and lived until 2 1/2 years old. The small log cabin is enclosed in a granite memorial shrine. The Visitor Center has exhibits and audiovisual program. Nearby is Lincoln's boyhood home.

Lincoln Homestead State Shrine is a restored settlement of Lincoln's grandparents. It was built in 1782 and was the home of Nancy Hanks, mother of the president. Park facilities include an 18-hole golf course, picnic area and gift shop.

South of Radcliff and Vine Grove is the world-famous Mammoth Cave region which covers more than 150 miles of charted caverns and vast areas not yet mapped. No other state has as many known caves as Kentucky (about 2,000), and the best known are in this cave region: Mammoth Cave, Mammoth Onyx Cave, Hundred Dome Cave, Diamond Caverns, Crystal Onyx Cave in the Park Mammoth Resort area, and smaller ones. Cave attractions include Snowball Dining Room (267 feet below the surface), Frozen Niagara, Crystal Lake, and Bottomless Pit, plus many others.

Above ground this region offers a 51,000-acre national park, a state park, both with motel and lodging accommodations, and camping facilities. The area also offers two state shrines, two large lakes, many historical sights, festivals, hillside chair lifts, and a wax museum.

Proximity to Louisville provides entertainment such as the Kentucky Derby, the Kentucky State Fair, the Louisville Zoological Gardens, Actors' Theatre, Kentucky Opera Association, Louisville Ballet, Louisville Orchestra, harness racing and professional baseball and basketball.

THE LABOR MARKET

POPULATION TRENDS

Area	Population				Percent Change	
	1972*	1970	1960	1950	1960-70	1950-60
Radcliff		7,881	3,384	--	+132.9	--
Vine Grove		2,987	2,435	1,252	+ 22.7	+ 94.5
Labor Market Area	205,900	202,670	179,654	148,472	+ 12.8	+ 21.0
Hardin County	77,700	78,421	67,789	50,312	+ 15.7	+ 34.7
Breckinridge County	15,200	14,789	14,734	15,528	+ 0.4	- 5.1
Bullitt County	29,100	26,090	15,726	11,349	+ 65.9	+ 38.6
Grayson County	17,400	16,445	15,834	17,063	+ 3.9	- 7.2
Hart County	14,500	13,980	14,119	15,321	- 1.0	- 7.8
Larue County	11,100	10,672	10,346	9,956	+ 3.2	+ 3.9
Meade County	17,400	18,796	18,938	9,422	- 0.7	+101.0
Nelson County	23,500	23,477	22,168	19,521	+ 5.9	+ 13.6

*Provisional Estimates.

Sources: U. S. Department of Commerce, Bureau of the Census, Census of Population, 1970, 1960, 1950. U. S. Bureau of the Census, Current Population Reports, Series P-26, June 1973.

GENERAL EMPLOYMENT CHARACTERISTICS, 1972

Major Employment Group	Employment	
	Hardin County	Labor Market Area
TOTAL	20,370	50,840
Agricultural	1,160	7,990
Nonagricultural	19,210	42,850
Manufacturing	2,510	7,732
Government	7,840	11,760
Trade and Services	4,834	10,051
Other	4,026	13,307

Source: Kentucky Department of Economic Security, Division of Research and Statistics.

MANUFACTURING EMPLOYMENT TRENDS BY INDUSTRY
MARCH 1973 AND 1963

Industry	Hardin County			Labor Market Area		
	1973	1963	% Change	1973	1963	% Change
TOTAL	2,612	619	+322.0	8,128	3,861	+ 110.5
Food & Kindred						
Products	197	74	+166.2	1,547	1,601	- 3.4
Tobacco	0	1	0	12	23	- 47.8
Apparel, Textiles,						
Leather	264	149	+ 77.2	1,689	882	+ 91.5
Lumber, Furniture	10	7	+ 42.9	253	128	+ 97.7
Printing & Publishing,						
Paper	90	47	+ 91.5	861	173	+ 397.7
Chemicals, Petroleum						
& Coal, Rubber	786	16	--	1,459	574	+ 154.2
Stone, Clay & Glass	44	47	- 6.4	290	202	+ 43.6
Primary Metals	0	0	0	130	0	0
Machinery, Metal						
Products, Equip.	809	94	+760.6	1,381	94	+1369.1
Other	412	184	+123.9	506	184	+ 175.0

Source: Kentucky Department of Economic Security, Number of Workers in Manufacturing Industries Covered by Kentucky Unemployment Insurance Law Classified by Industry and County, March 1973, March 1963.

RADCLIFF MANUFACTURING FIRMS,
THEIR PRODUCTS AND EMPLOYMENT

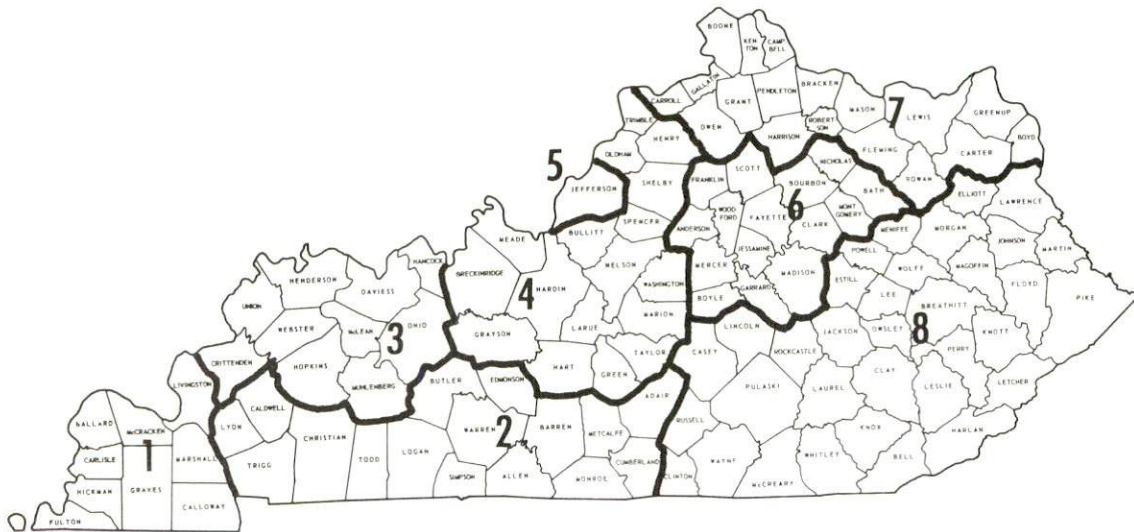
Firm (Establishment Date)	Product	Employment		
		Total	Male	Female
Knox Engravers, Inc. (1962)	Plastic signs, rubber stamps, name tags	3	1	2
Radcliff Concrete, Inc. (1957)	Ready mixed concrete	30	28	2
Royalty Printing Company & The Sentinel (1957)	Newspaper, job printing, name labels for army clothing	6	4	2
UARCO, Inc. (1972)	Business forms	90	53	37

Source: Kentucky Department of Commerce, 1974 Kentucky Directory of Manufacturers.

WAGES

Occupational wage rates for specific industries are usually not available to most government agencies, and wage data furnished to state employment agencies by industrial employers is protected from disclosure by federal law. The most reliable up-to-date wage information can be obtained by direct contact with local employers.

Associated Industries of Kentucky, a voluntary organization of Kentucky businesses, regularly collects occupational wage rates and fringe benefits data from participating member firms. Data is compiled for over 130 clearly defined office, production, and service occupations. Tabulations are published for eight regions of Kentucky, as shown on the map below. It should be noted that the data may be weighted by the preponderance of firms in the larger cities and may be somewhat higher than the rates paid in the smaller communities. Data from these tabulations are available, upon request, from the Kentucky Department of Commerce, Frankfort, Kentucky 40601.



Associated Industries of Kentucky Area Wage Surveys

LABOR ORGANIZATIONS

There are presently no unions representing manufacturing workers in Radcliff.

ESTIMATED MALE LABOR SUPPLY RADCLIFF AND VINE GROVE LABOR MARKET AREA

Area	Current			Future	
	Total	Not in Labor Force	Unemployed	Under-employed	Reaching 18 Yrs. of Age by 1980
Labor Market					
Area	7,580	1,220	1,400	4,960	10,616
Hardin	3,570	140	120	3,310	3,402
Breckinridge	800	400	170	230	775
Bullitt	470	0	140	330	1,610
Grayson	710	190	240	280	874
Hart	400	150	120	130	720
Larue	520	230	100	190	609
Meade	330	110	50	170	1,052
Nelson	780	0	460	320	1,574

Sources: Kentucky Department of Economic Security, Kentucky Labor Supply Estimates by County, 1973. Kentucky Department of Commerce, Future Labor Supply by 1980.

ESTIMATED FEMALE LABOR SUPPLY RADCLIFF AND VINE GROVE LABOR MARKET AREA

Area	Current			Future	
	Total	Not in Labor Force	Unemployed	Under-employed	Reaching 18 Yrs. of Age by 1980
Labor Market					
Area	10,210	5,160	1,050	4,000	10,133
Hardin	3,220	1,220	410	1,590	3,278
Breckinridge	1,040	690	110	240	764
Bullitt	870	180	100	590	1,526
Grayson	1,110	760	80	270	825
Hart	800	490	100	210	693
Larue	760	490	40	230	588
Meade	1,460	990	40	430	986
Nelson	950	340	170	440	1,473

Sources: Kentucky Department of Economic Security, Kentucky Labor Supply Estimates by County, 1973. Kentucky Department of Commerce, Future Labor Supply by 1980.

PER CAPITA PERSONAL INCOME

<u>Area</u>	<u>1971</u>	<u>1961</u>	<u>% Change</u>
Hardin County	\$4,402	\$2,810	+156.7
Labor Market Area Range	\$2,109 - 4,402	\$939 - 2,810	N. A.
Kentucky	3,310	1,677	+ 97.3
U. S.	4,164	2,265	+ 83.8

Sources: University of Kentucky, Office of Development Services and Business Research, Per Capita Income in Kentucky. U. S. Department of Commerce, Bureau of Economic Analysis, Survey of Current Business, August, 1973.

TRANSPORTATION

Rail

Line serving Vine Grove and Radcliff - Illinois Central Gulf Railroad
Services - Three northbound and three southbound fast freights daily;
one local freight six days per week, siding space for approximately
ten cars, and switching facilities at Vine Grove; nearest piggyback
facilities at Louisville, 38 miles from Vine Grove.

For details on routing, schedules, rates, and services, contact:

Director of Industrial Development
Illinois Central Gulf Railroad Company
135 East 11th Place
Chicago, Illinois 60605

Truck Service

<u>Company</u>	<u>Home Office</u>
<u>Radcliff</u>	
Associated Transport, Inc.	380 Madison Avenue, New York, New York 10017
Bowling Green Express, Inc. (N-B only)	P. O. Box 1111, Bowling Green, Kentucky 42101
Cooper-Jarrett, Inc.	23 South Essex Avenue, Orange, New Jersey 07050
Crutcher Transfer Line, Inc.	600 Marrett Avenue, Louisville, Kentucky 40208
Great Lakes Express Company	172 Davenport Street, Saginaw, Michigan 48602
Majors Transit, Inc. (Restricted on S-B to Clarkson)	P. O. Box 7, Caneyville, Kentucky 42721
McLean Trucking Company	P. O. Box 213, Winston-Salem, North Carolina 27107
Robbins Truck Line, Inc.	P. O. Box 145, Hardinsburg, Kentucky 40143
Southern Forwarding Company	728 Alston Avenue, Memphis, Tennessee 38102
T. I. M. E. - DC, Inc.	P. O. Box 2550, Lubbock, Texas 79408
Wilson Freight Company (Restricted S-B)	3636 Follett Avenue, Cincinnati, Ohio 45223

Company
Vine Grove

Home Office

McLean Trucking Company

P. O. Box 213,
Winston-Salem, North Carolina 27107

Robbins Truck Line, Inc.

P. O. Box 145,
Hardinsburg, Kentucky 40143

Wilson Freight Company
(Off-route restricted S-B)

3636 Follett Avenue,
Cincinnati, Ohio 45223

Other Freight Services

Nearest Shipping Center

United Parcel Service*

Louisville, Kentucky

*For regular scheduled or occasional pickups, arrangements must be made with the Louisville office of U. P. S.

HIGHWAY MILES AND TRUCK TRANSIT TIME IN DAYS FROM
RADCLIFF, KENTUCKY, TO SELECTED MARKET CENTERS

City	Highway Miles	Delivery		City	Highway Time	Delivery	
		Time	TL			Time	TL
Atlanta, Ga.	398	1		Los Angeles, Calif.	2, 141	4	
Birmingham, Ala.	332	1		Louisville, Ky.	34	1	
Chicago, Ill.	335	1		Nashville, Tenn.	146	1	
Cincinnati, Ohio	147	1		New Orleans, La.	676	2	
Cleveland, Ohio	388	1		New York, N. Y.	803	2	
Detroit, Mich.	409	1		Pittsburgh, Pa.	428	1	
Knoxville, Tenn.	218	1		St. Louis, Mo.	298	1	

Source: Delivery time only - Crutcher Transfer Line, Inc., 600 Marrett Avenue, Louisville, Kentucky 40208.

Air

	<u>Nearest Local</u>	<u>Nearest Commercial</u>
	Ben Floyd Field	Standiford Field
Location:	Approximately 7 miles south of Radcliff	Louisville, 34 miles from Radcliff
Runways:	One paved	Three paved
Length:	2,800 feet	7,800 ft., 5,000 ft., 7,250 ft.
Traffic		
Control:	Wind tee and wind sock	Control tower: approach and ground control; guards; radar service: departure control
Lighting:	Sundown to sunrise	Runways, obstructions, beacon and approach and touchdown lights, center line on runways 1 - 19.
Services:	80-100-130 octane, flight instructions, transportation available, restaurant across highway from field, charter, lodging by reservation	Louisville-Jefferson County Air Board, 80, 100, 115, jet fuel, storage, major A&E repairs; TWA, American, Eastern, Delta, Piedmont, Ozark and Allegheny Airlines; Hertz, Avis, and National rent-a-car service, restaurant, taxi, city bus service, Budget Rent-A-Car Service
Air Freight		
Service:	Chartered air freight services must be arranged	Freight carrying airlines regularly service this terminal
	<u>Radcliff</u>	<u>Vine Grove</u>
<u>Bus</u> -	Southern Greyhound Bus Lines	Nearest bus service at Radcliff, 4 miles distant
<u>Taxi</u> -	One company, 24-hour service	One company, 24-hour service
<u>Rental Services</u> -	One car and one truck rental service	Nearest car and truck rental service at Radcliff, 4 miles distant

POWER AND FUEL

Electricity

Company serving Radcliff and Vine Grove - Kentucky Utilities Company

Source of power - Kentucky Utilities Company

Total generating capacity - 1, 735, 000 KW

For industrial rates contact:

Kentucky Utilities Company
120 South Limestone Street
Lexington, Kentucky 40507

Company serving Hardin County - Nolin Rural Electric Cooperative Corporation

Source of power - East Kentucky Power Cooperative

Total generating capacity - 548, 000 KW

For industrial rates contact:

Nolin Rural Electric Cooperative Corporation
P. O. Box 668
Elizabethtown, Kentucky 42701

Natural Gas

Company serving Radcliff - Louisville Gas & Electric Company

Source of supply - Texas Gas Transmission Corporation

Size of transmission mains - 16-inch (distributor)

Distribution mains - 2, 4, 6 and 8 inches

Distribution pressure - 30 psig

Btu content - 1, 025 per cubic foot

Specific gravity - .6

For rates and supplies contact:

Louisville Gas & Electric Company
Gas Sales Department
311 West Chestnut Street
Louisville, Kentucky 40202

Company serving Vine Grove - Louisville Gas & Electric Company

Source of supply - Texas Gas Transmission Corporation

Distribution mains - 2, 4, and 8 inches

Distribution pressure - 30 psig

Btu content - 1, 025 per cubic foot

Specific gravity - .6

For rates and supplies contact:

Louisville Gas & Electric Company
Gas Sales Department
311 West Chestnut Street
Louisville, Kentucky 40202

Other Fuels

Radcliff and Vine Grove Area

Propane and butane -

Pargas of Canmer, Inc., Highway 31 East, Canmer, Kentucky
Al's Gas Service, Inc., Radcliff, Kentucky
J. R. Ashcraft, Distributor, Elizabethtown, Kentucky
Cave Oil Company, Inc., Elizabethtown, Kentucky
Union Oil Company, Elizabethtown, Kentucky

Fuel oils -

Distillate fuel oil -

Atlantic Richfield Oil Company (Arco), 337 E. Dixie Avenue,
Elizabethtown, Kentucky
Ashland Petroleum Company, 736 Hawkins Drive,
Elizabethtown, Kentucky
Exxon Company, Hawkins Drive, Elizabethtown, Kentucky
Standard Oil Company, 216 East Poplar, Elizabethtown, Kentucky

Residual fuel oil - arrangements must be made with the refinery

Low sulphur content coal - available from eastern Kentucky

WATER AND SEWERAGE

Water

Company serving Radcliff - Hardin County Water District No. 1*
Source - Wells on the Ohio River and spring-fed impoundments
Treatment plant capacity - Saunders Springs Plant - 700,000 gpd
Muldraugh Plant - 2,000,000 gpd
Average daily consumption - 1,800,000 gallons
Peak daily consumption - 2,300,000 gallons
Type treatment - Complete
Storage capacity - 545,000 gallons plus 420,000 gallons clear well storage
Size lines - 2, 3, 4, 6, 8, 10, 12 and 14 inches
Average pressure - 40 psi
Average temperature - 70° F.

MONTHLY WATER RATES FOR WHOLESALE AND INDUSTRIAL CONSUMERS

Billing rate, 3/4-inch commercial meter

Minimum rate per month entitles customer to

	10,000 gallons	\$10.00
First	10,000 gallons	1.00 per M gallons
Next	10,000 gallons	.80 per M gallons
Next	20,000 gallons	.60 per M gallons
Next	60,000 gallons	.50 per M gallons
All over	100,000 gallons	.40 per M gallons

Billing rate, 1-inch commercial meter

Minimum rate per month entitles customer to

	50,000 gallons	\$30.00
First	50,000 gallons	.60 per M gallons
Next	50,000 gallons	.50 per M gallons
All over	100,000 gallons	.40 per M gallons

Billing rate, 1 1/2-inch commercial meter

Minimum rate per month entitles customer to

	75,000 gallons	\$45.00
First	75,000 gallons	.60 per M gallons
Next	25,000 gallons	.50 per M gallons
All over	100,000 gallons	.40 per M gallons

*Hardin County Water District #1 is in the first stage of a three-phase plan to double the treatment capacity of the Muldraugh treatment plant to 4,000,000 gpd.

Billing rate, 2-inch commercial meter

Minimum rate per month entitles customer to

	120,000 gallons	\$60.00
First	120,000 gallons	.50 per M gallons
All over	120,000 gallons	.40 per M gallons

COMMERCIAL TAP ON RATES

2	-inch Meter	\$400
1 1/2	-inch Meter	350
1	-inch Meter	300
3/4	-inch Meter	200

Company serving Vine Grove - Vine Grove Water & Sewer Company*

Source - Brushy Fork Creek

Treatment plant capacity - 360,000 gpd

Average daily consumption - 225,000 gallons

Peak daily consumption - 300,000 gallons

Type treatment - Chlorine, fluoride, lime, alum

Storage capacity - 476,000 gallons

Size lines - 2, 4, 6 and 10 inches

Average pressure - 32 psi

Average temperature - 50° F.

MONTHLY WATER RATES FOR WHOLESALE
AND INDUSTRIAL CONSUMERS

First	2,000 gallons	\$3.50 (Minimum)
Next	3,000 gallons	1.15 per M gallons
Next	5,000 gallons	1.10 per M gallons
Next	5,000 gallons	1.05 per M gallons
Next	5,000 gallons	.95 per M gallons
Next	5,000 gallons	.85 per M gallons
Next	25,000 gallons	.75 per M gallons
Next	50,000 gallons	.55 per M gallons
Next	100,000 gallons	.45 per M gallons

Tap-on Charge - \$80.00

*Application has been filed for a water system improvement project which includes a new 750,000 gpd water treatment plant and a new 200,000-gallon elevated storage tank.

Name of water district - Hardin County Water District No. 2
Area served - Hardin County
Date when water district began operating - May 1, 1969
Source of supply of treated water - Hardin County Water District No. 1
Average amount of water used in a 24-hour period - 555, 000 gallons
Peak amount of water used in a 24-hour period - 856, 000 gallons
Storage capacity - 1, 000, 000 gallons
Average pressure - 90 psi
Size lines - 8, 6, 4 and 2 inches

Rates -

First	2, 000 gallons	\$5.60
Next	2, 000 gallons	1.50 per M gallons
Next	6, 000 gallons	.80 per M gallons
Next	30, 000 gallons	.70 per M gallons
Next	60, 000 gallons	.60 per M gallons
All over	100, 000 gallons	.50 per M gallons

Tap-on rate - \$250

Note: \$175 fee if contractors are laying new pipe
and tap-on is done at this time

Surface water sources - Ohio, Salt, and Rolling Fork Rivers
Average discharge - Ohio - unlimited, Rolling Fork near Boston - 1, 642
cfs (31-year record, USGS); Salt River at Shepherdsville - 1, 468 cfs
(31-year record, USGS)
Expected ground water yield - Varies from 5 to 1, 000 gpm depending
on locale, large springs are common

Sewerage

Company serving Radcliff - City of Radcliff Sewerage System
Design capacity - 1, 500, 000 gpd
Average daily flow - 1, 100, 000 gallons
Treatment - Secondary and tertiary
Type treatment - Aeration, contact stabilization, tertiary - clarification,
chlorination
Treated effluent discharged into - Mill Creek
Size of sanitary mains - 8 to 14 inches*

*Sanitary mains are now being extended into areas not previously served.
This increase to the service area will cost approximately \$150, 100.

Rates -

Billing rate, 3/4-inch commercial meter

Minimum rate per month entitles customer to

	10,000 gallons of sewage --	\$9.25	
First	10,000 gallons	\$.925	per M gallons
Next	5,000 gallons	.60	per M gallons
Next	85,000 gallons	.4999	per M gallons
All over	100,000 gallons	.40	per M gallons

Billing rate, 1-inch commercial meter

Minimum rate per month entitles customer to

	50,000 gallons of sewage --	\$29.25	
First	50,000 gallons	\$.585	per M gallons
Next	50,000 gallons	.5098	per M gallons
All over	100,000 gallons	.40	per M gallons

Billing rate, 1 1/2-inch commercial meter

Minimum rate per month entitles customer to

	100,000 gallons of sewage --	\$54.74	
First	100,000 gallons	\$.5474	per M gallons
All over	100,000 gallons	.40	per M gallons

Billing rate, 2-inch commercial meter

Minimum rate per month entitles customer to

	150,000 gallons of sewage --	\$74.74	
First	150,000 gallons	\$.4983	per M gallons
All over	150,000 gallons	.40	per M gallons

Connection Charge:

Residential Property	\$150
----------------------	-------

Business Property - 5/8 x 3/4-inch or	
3/4-inch Water Meter	\$175
1-inch Water Meter	\$225
1 1/2-inch Water Meter	\$275
2-inch Water Meter	\$425

Multiple Units served by one 5/8-inch x	
3/4-inch Water Meter	\$150

Property where it is necessary to install a Uniject
to get into the sewer line -- At actual cost.

Company serving Vine Grove - Vine Grove Water & Sewer Company*

Design capacity - 250,000 gpd

Average daily flow - 250,000 gallons

Treatment - Primary

Type treatment - Primary digester, trickling filter, chlorine, drying beds

Treated effluent discharged into - Brushy Fork Creek

Size of sanitary mains - 8 and 6 inches

Rates - 60 percent of monthly water bill

Tap-on charge - \$100.00

*Application has been filed for a sewerage system improvement project which includes a new sewage treatment plant designed to serve a population of 6,000, and 2,600+ feet of new 6- through 15-inch mains.

LOCAL GOVERNMENT

City

Radcliff

Structure - Mayor - 4-year term; 6 councilmen - 2-year terms

Total receipts 1972-73 - General Fund	\$338,758.91
Sewer Fund	240,401.82

Fees and licenses - Business privilege license based on gross receipts with a set minimum fee - ordinance dated December 31, 1973.

Vine Grove

Structure - Mayor - 4-year term; 6 councilmen - 2-year terms

Budget 1974 - General Fund	\$ 73,600
(Estimated) Water and Sewer Fund	130,000

Fees and licenses - Occupational license fee ranges from \$15 to \$50 annually, depending on the type of business

County

Structure - County Judge - 4-year term; 8 magistrates - 4-year terms

Budget 1973-74 - General Fund	\$483,433
Road Fund	302,208

Assessed Value of Property, 1973

<u>Classes of Property</u>	<u>Radcliff</u>	<u>Vine Grove</u>	<u>Hardin County</u>
Real Estate	\$45,942,000	\$11,335,035	\$263,885,403
Tangibles	12,338,200	2,441,576	57,596,560
Public Service	2,621,322	631,604	33,813,937

Property Taxes

Land and buildings are taxed by the state and may be taxed by local jurisdictions. The state rate is \$0.015 per \$100 of assessed valuation.

Tangible personal property owned by manufacturers (automobiles, trucks, finished goods, office furniture, office equipment) is taxed by the state at \$0.15 per \$100 and may be taxed by local jurisdictions.

Manufacturing machinery, raw materials inventories, and goods in process inventories are not subject to local taxation. The state rate is \$0.15 per \$100.

Property stored in public warehouses is not subject to local taxation. The state rate is only \$0.015 per \$100.

All property is assessed at 100 percent of fair cash value.

Local Property Tax Rate Per \$100 of Assessed Valuation, 1973*

<u>Taxing Jurisdiction</u>	<u>Radcliff</u>	<u>Vine Grove</u>	<u>Hardin County</u>
County	\$.199	\$.199	\$.199
School	.419	.419	.419
City	.220	.220	

Utilities Gross Receipts Tax for Schools

Hardin County levies a 3 percent tax on utilities receipts for schools. This tax is paid by all consumers of utilities. Exempted are receipts from utilities services that are resold and the receipts from the sale of energy or energy producing fuels that exceed 3 percent of the cost of production in manufacturing, processing, mining or refining.

Planning and Zoning

Radcliff

Joint agency - Hardin County Planning and Zoning Commission

Zoning enforced - In city

Subdivision regulations enforced - In city

Local codes enforced - Building and housing

Mandatory state codes enforced - Plumbing, National Fire Protection

Association Code, National Building Code (for major buildings and residential construction containing more than 12 bedrooms per building)

Other programs - Low-rent housing

*Kentucky Department of Revenue, Kentucky Property Tax Rates, 1973.

Vine Grove

Joint Agency - Hardin County Planning and Zoning Commission

Zoning enforced - In city

Subdivision regulations enforced - In city

Local codes enforced - Building

Mandatory State Codes Enforced - Plumbing, National Fire Protection

Association Codes, National Building Code (for major buildings and residential construction containing more than 12 bedrooms per building)

Safety

<u>Police</u>	<u>Radcliff</u>	<u>Vine Grove</u>	<u>Hardin County</u>
Total staff	13 (full-time) 10 (auxiliary)	3	5
Radio-patrol cars	5	2	4
Other equipment	Mobile crime lab staffed by 2 full-time personnel		

Fire

American Insurance

Association Fire Rating 7 7

Full-time staff 1 8

Volunteers 26 24 12

Equipment:

750 gpm pumpers 1 1 1

500 gpm pumpers 1 2 1

250 gpm pumpers 2

140 gpm pumper 1

100 gpm pumper 1

Other	Automobile	2 jeeps, automobile, helicopter, 3 ambulances with daily, 24-hour, county-wide service
-------	------------	--

Civil Defense

Hardin County Civil Defense - Civil defense offices are located in Radcliff and Elizabethtown, and a third station is planned for Sonora. Equipment includes boats and motors, communications equipment, and dragging equipment. A mutual assistance program has been agreed upon between Hardin and Larue Counties.

Sanitation

	<u>Radcliff</u>	<u>Vine Grove</u>
Type service	Private*	Private
Fee charged:		
residential	\$2.50 per month	\$3.00 per month
business	Contract	By contract
Collection frequency:		
residential	Twice weekly	Twice weekly
business	Contract	By contract
Trash pickup	Daily	Twice weekly
Disposal method	Sanitary landfill	Sanitary landfill

Kentucky Industrial Services, Inc., based in Elizabethtown, 11 miles south of Radcliff, provides service to industrial customers. Services and rates are negotiated.

Hardin County provides a free sanitation service to residents of the county. Refuse may be disposed of at collection points which are located throughout the county. The county provides pick up service at these points.

*Two private companies serve Radcliff. This represents the type of service provided by one company.

EDUCATION

Public Schools

Hardin County

Total Enrollment (Fall 1973)	9,289
Elementary	5,852
Junior High	600
High School	2,837
Student-Teacher Ratio	22 - 1
Elementary	23 - 1
Junior High	21 - 1
High School	19 - 1
Percent High School Graduates to College	35.2
Expenditures Per Pupil (1972-73)	\$525.50
Bonded Indebtedness, June 30, 1973	\$4,626,000

Nonpublic Schools

Total Enrollment	5,138
Elementary (K-8)	3,209
Middle School	1,069
High School	860
Student-Teacher Ratio	25 - 1
Elementary (K-8)	27 - 1
Middle School	23 - 1
High School	23 - 1

Vocational Schools

Nearest State School

Location	Elizabethtown State Vocational-Technical School
Miles Distant	Elizabethtown, Kentucky
Curriculum	11 miles from Radcliff
	Trade and Industrial
	Auto Mechanics
	Carpentry
	Drafting
	Electricity
	Welding
	Major Appliance Repair

Arrangements can be made to provide training in the specific production skills required by an industrial plant. Instruction may be conducted either in the vocational school or in the industrial plant, depending upon the desired arrangement and the availability of special equipment.

Colleges and Universities

<u>Name</u>	<u>Area - Within 60 Miles</u>		<u>Highest Degree Conferred</u>
	<u>Location</u>	<u>Enrollment (Fall, 1973)</u>	
Bellarmino College	Louisville	1,306	Baccalaureate
Campbellsville College	Campbellsville	693	Baccalaureate
Elizabethtown Community College	Elizabethtown	837	Associate
Fort Knox Center*	Fort Knox	664	Associate
Indiana University Southeast	Jeffersonville	2,745**	A. B. , B. S. , M. S.
Jefferson Community College	Louisville	4,183	Associate
Southwest Campus	Louisville	368	Associate
St. Catharine Junior College	St. Catharine	118	Associate
Spalding College	Louisville	1,065	Masters
University of Louisville	Louisville	12,230	Ph. D. , M. D. , D. M.D. , J. D.

*Fort Knox Center is a part of University of Kentucky College of Arts and Sciences (Lexington) Campus.

**Fall 1972 enrollment.

HEALTH

Hospitals

<u>Nearest General Hospital</u>	<u>Location</u>	<u>Beds</u>
Hardin Memorial Hospital	Elizabethtown, 11 miles from Radcliff	159

General hospital facilities and services - 3 operating rooms, fracture room, cysto room, X-ray room, intensive care, laboratory, pharmacy, emergency room, eye surgery, pediatrics, inhalation therapy, delivery room, nursery, blood bank

Medical staff - 34 doctors, 68 registered nurses, 36 graduate licensed practical nurses, pathologist, radiologist

Nursing Homes

<u>Hardin County</u>	<u>Number</u>	<u>Beds</u>
Extended care homes	1	56
Personal care homes	3	59
Intermediate care homes	3	151

Public Health

Facility - Hardin County Health Center

Staff - 1 administrative assistant, 5 nurses, 3 sanitarians, 2 clerk typists, 1 custodian, 1 health officer, dental hygienist, family planning - multi-phasic clerk

Budget 1973-74 - \$164,225

OTHER LOCAL FACILITIES

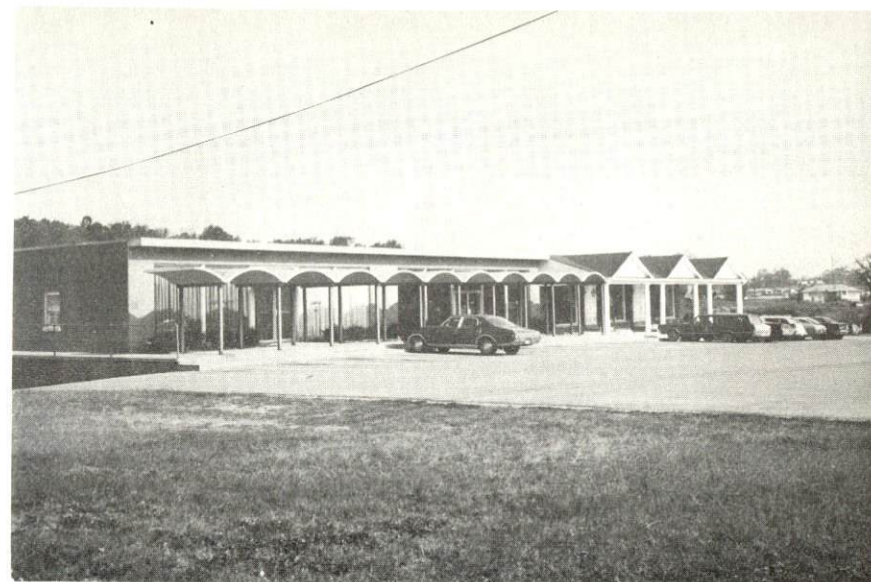
<u>Communications</u>	<u>Radcliff</u>	<u>Vine Grove</u>
Telephone -	Brandenburg Telephone Company	Brandenburg Telephone Company
Services -	Standard	Standard
Telegraph -	Western Union from Fort Knox	Western Union from Fort Knox
Services -	Telephone	Telephone
Postal - U. S. Post Office		
Class -	First	Second
Mail received -	3 times daily	3 times daily
Mail dispatched -	3 times daily	3 times daily
Newspapers -		
Weekly and circulation -	The Sentinel - 3, 500	
Other papers received from -	Elizabethtown and Louisville, Kentucky; Nashville, Tennessee	Radcliff, Elizabethtown and Louisville, Kentucky
Radio -	WSAC AM-FM	
Stations received from-	Elizabethtown, Lexington and Louisville, Kentucky; Cincinnati, Ohio	Radcliff, Elizabethtown, Lexington, and Louisville, Kentucky; Cincinnati, Ohio
Television -		
Reception from -	Bowling Green and Louisville, Kentucky	Bowling Green and Louisville, Kentucky
Kentucky Educational Television -	Elizabethtown transmitter, Channel 23; Louisville transmitter, Channel 68	Elizabethtown transmitter, Channel 23; Louisville transmitter, Channel 68

Library Services

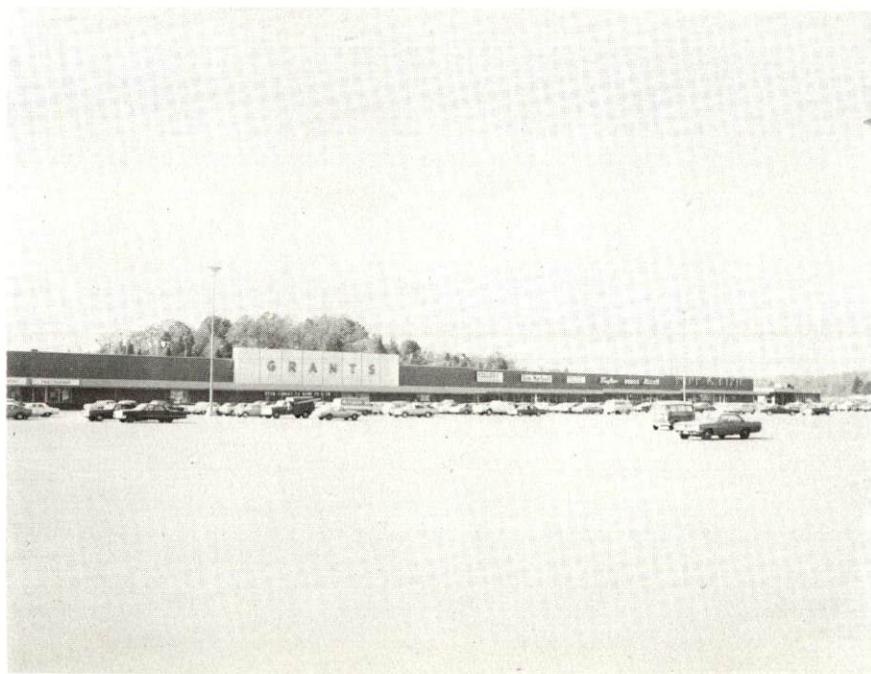
The Hardin County Public Library bookmobile makes two scheduled community stops at Radcliff and at Vine Grove every other Saturday. Vine Grove also has a bookstation containing 400 to 600 volumes.



Dixie Boulevard South



Commercial Building - Central Parkway



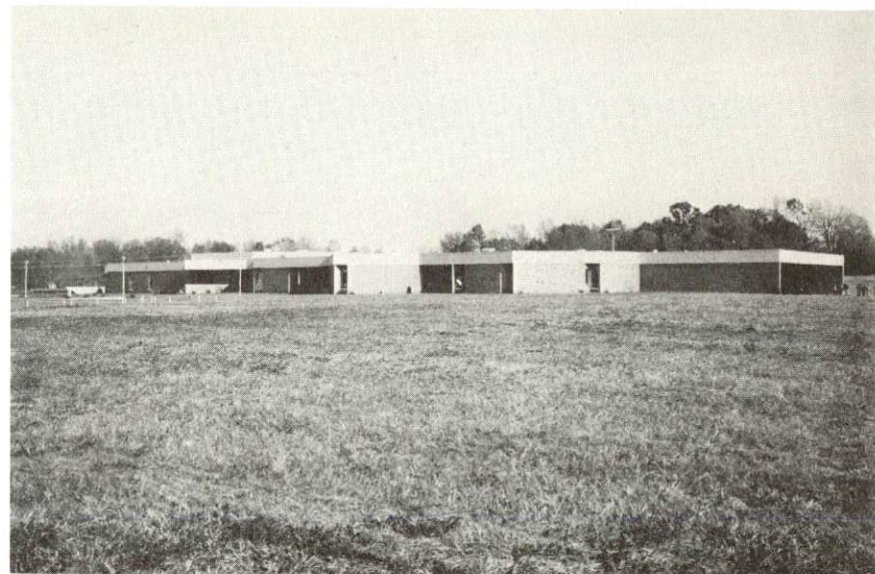
Redmar Plaza Shopping Center



Fort Knox Bank



North Hardin High School



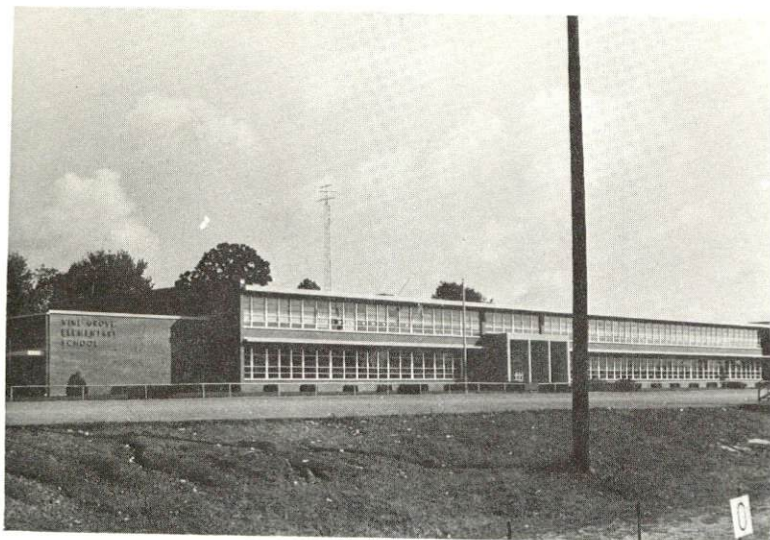
Parkway Elementary School



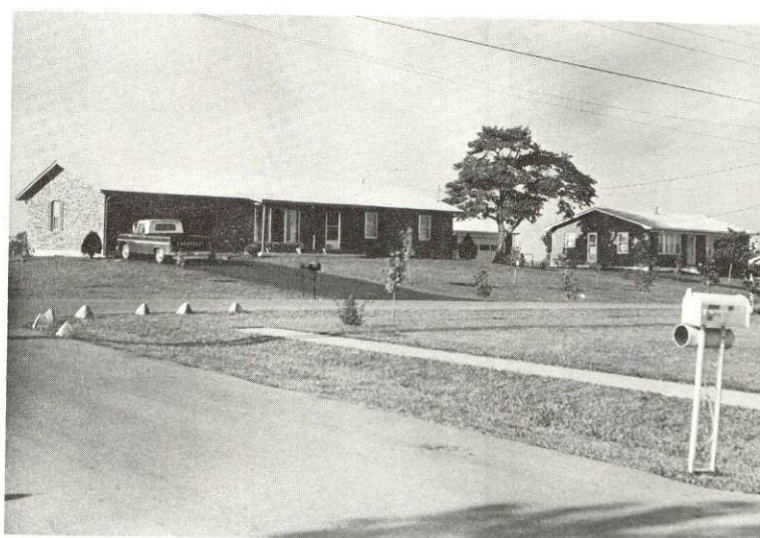
Apartment House



City Park



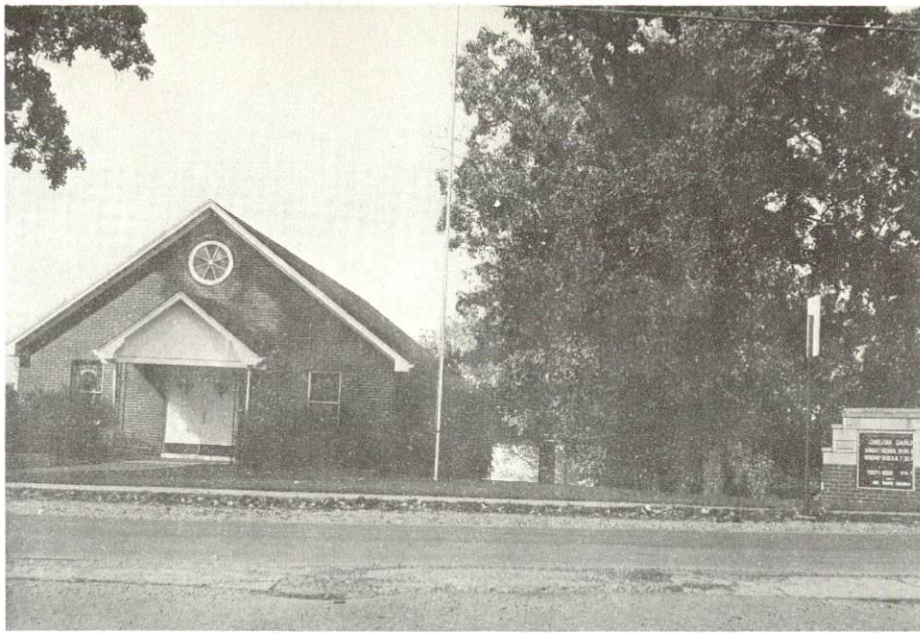
Vine Grove Elementary School



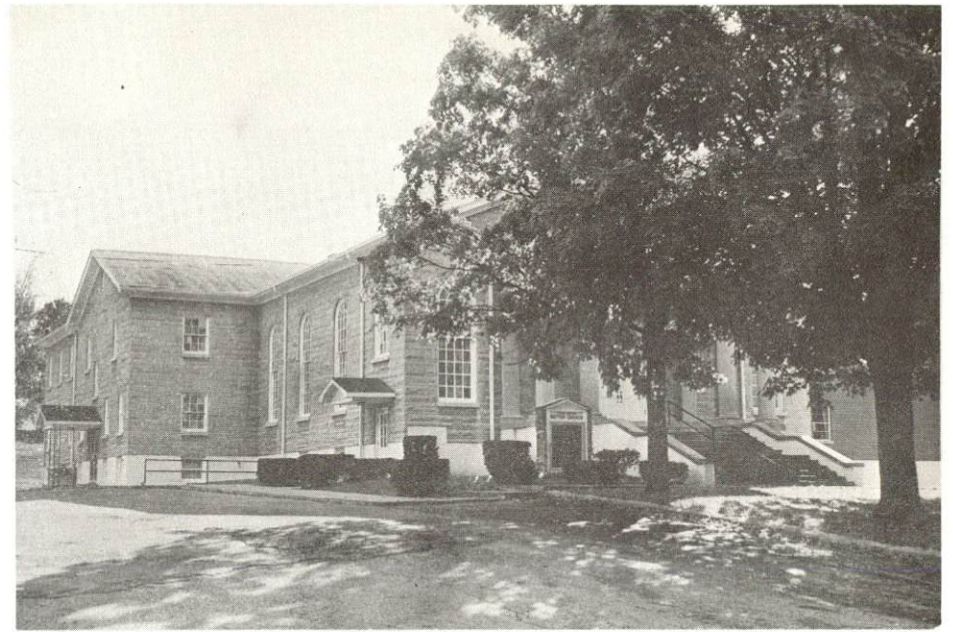
New Subdivision



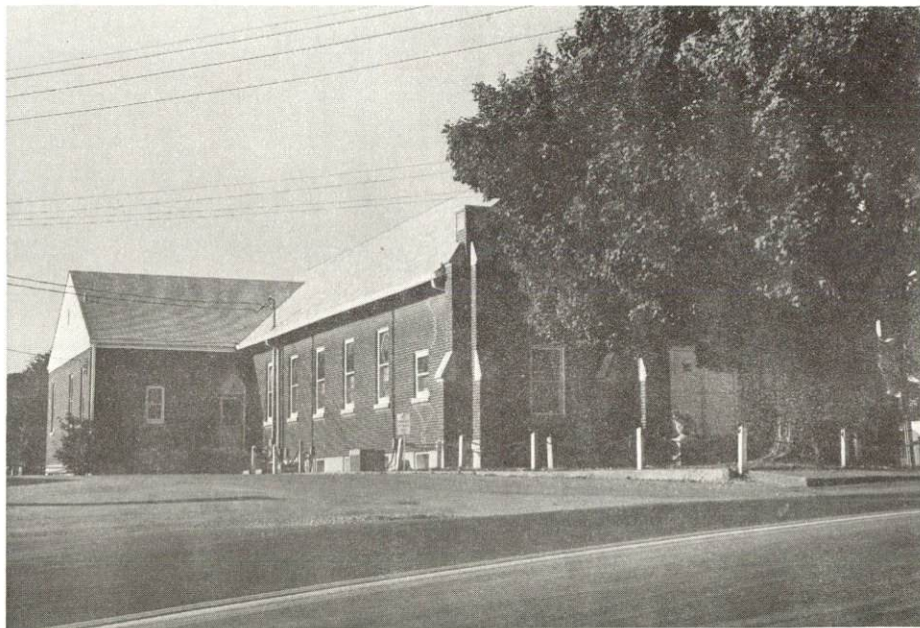
Golf Course



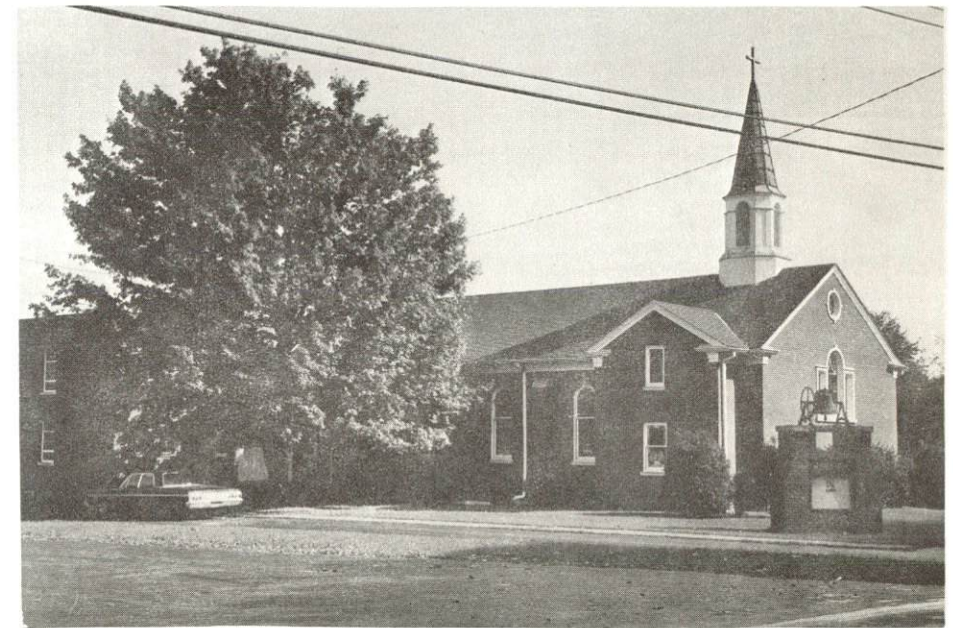
Christian Church



Vine Grove Baptist Church



St. Brigid's Rectory



Vine Grove Methodist Church

<u>Religious Institutions</u>	<u>Radcliff</u>	<u>Vine Grove</u>
Number of churches -	15	6
Denominations -	Baptist	Baptist
	Catholic	Methodist
	Church of Christ	Christian
	Church of God	Catholic
	Christian	Jehovah's Witnesses
	Jehovah's Witnesses	
	Methodist	
	Assembly of God	
	Church of the Nazarene	
Nearest synagogues -	Louisville, 34 miles distant	Louisville, 38 miles distant
Congregations -	Adath Israel (reform)	Adath Israel (reform)
	Adath Jeshurun (conservative)	Adath Jeshurun (conservative)
	Anshei Sfard (orthodox)	Anshei Sfard (orthodox)
	Brith Sholom (reform)	Brith Sholom (reform)
	Keneseth Israel (orthodox)	Keneseth Israel (orthodox)

Financial Institutions

<u>Banks</u>	<u>Statement as of December 31, 1973*</u>	
	<u>Assets</u>	<u>Deposits</u>
Fort Knox National Bank, Radcliff Branch	\$21,910,000.00	\$19,171,000.00
First Hardin National Bank, Radcliff Branch	66,512,368.00	58,650,466.00
Citizens Bank, Radcliff Branch	30,614,940.92	26,164,550.44
Farmers Bank, Vine Grove	4,698,006.86	4,156,310.77

<u>Savings and Loan Associations</u>	<u>Statement as of June 30, 1973</u>	
	<u>Assets</u>	<u>Shared Accounts</u>
First Federal Savings & Loan Association, Radcliff Branch	\$50,045,870.40	\$43,193,664.80

*Financial statements reflect the condition of the bank and their branches combined.

Hotels and Motels

Radcliff

Total number - 3

Units - 72

Clubs and Organizations

Radcliff

Business and Civic - Jaycees, Chamber of Commerce, Optimist, City Council, Hairdressers Guild, AFGE, Civil Defense Unit, Radcliff Ministerial Association, Radcliff P. T. A., Lions

Fraternal - Masonic Lodge

Women's - Radcliff Homemakers, Bob-O-Link Homemakers, Longview Homemakers, Business and Professional Women's Club, Eastern Star, Woman's Club, Jaycettes, Ladies Auxiliary

Youth - Boy Scouts, Girl Scouts

Vine Grove

Business and Civic - Civic Service Club, P. T. A., Optimist, Service Club

Fraternal - Masonic Lodge, Knights of Columbus, American Legion

Women's - Woman's Club, Homemakers, Eastern Star, Amaranth, Rainbow

Youth - Teenage Club, Boy Scouts, Girl Scouts

Other - Sportsman's Club

RECREATION

<u>Local</u>	<u>Radcliff</u>	<u>Vine Grove</u>
Public Recreation Facilities		
Supervised program -	yes	yes
Parks -	1	1
Playgrounds -	2	1
Tennis courts -	2	2
Baseball diamonds -	3	1
Football fields -	1	1
Other -	softball field	softball fields(2)
Private Recreation Facilities		
Golf course -		1
Swimming pool -		1
Movie theater -	1 drive-in	
Bowling facility -	1 (12 lanes)	
Other -	skating rink	

Area (Within 60 miles)

Green River Lake State Park
 Bernheim Forest
 Nolin Dam and Reservoir
 Rough River Dam State Resort Park
 My Old Kentucky Home State Park
 The Patton Museum of Cavalry and Armor
 Abraham Lincoln Birthplace National Historic Site
 Lincoln Homestead State Shrine
 Mammoth Cave National Park
 Louisville, Kentucky, offers numerous cultural, recreational, and sports events.

AGRICULTURE - NATURAL RESOURCES - CLIMATE

Agriculture*

	<u>Hardin County</u>	<u>Labor Market Area</u>
Total land area (acres)	394,240	2,168,320
Percent of area in farm land	64.4	74.5
Number of farms	2,150	12,502
Average size of farms (acres)	118.1	129.2
1969 value of all farm products	\$12,008,550	\$72,277,062
Value per farm	5,585	5,781
Total crop sales	3,694,302	25,587,469
Total livestock & livestock products	8,231,388	46,322,322
1972 agricultural production included:		
Burley tobacco (lbs.) (Est.)	3,390,000	27,726,000
Corn for grain (bu.)	1,980,000**	8,411,300**
Cattle and calves (number)	56,900**	352,200**
Hogs and pigs (number)	27,400**	165,200**
Milk production, 1971 (lbs.)	42,660,000	282,160,000

Natural Resources

Principal mineral resources	Stone
Other mineral resources	Petroleum, natural gas, rock asphalt, glass sand, gravel and some clay
Acres of commercial forest land	149,300
Most abundant tree species	White oak, red oak, ash, hickory, yellow poplar, beech, hard maple, yellow pine

*U. S. Department of Commerce, Bureau of the Census, Census of Agriculture, 1969. U. S. Department of Agriculture and Kentucky Department of Agriculture, Kentucky Agricultural Statistics, 1972.

**Preliminary figures.

Climate*

Hardin County

Temperature

Annual mean (30-year record)	55.6 degrees
Average annual 1972	54.2 degrees
Record highest, July, 1966** (9-year record)	98.0 degrees
Record lowest, January, 1972 (9-year record)	-11.0 degrees
Normal heating degree days (30-year record)	4,683

(Heating degree day totals are the sums of negative departures of average daily temperatures from 65° F.)

Precipitation

Mean annual total (30-year record)	44.73 inches
Mean annual snow and sleet (28-year record)	16.30 inches
Total precipitation 1972	57.61 inches
Mean number days precipitation (.01 inch or more) (28-year record)	129
Average number days thunderstorms (28-year record)	47

Prevailing winds (17-year record)	South
-----------------------------------	-------

*U. S. Department of Commerce, Environmental Science Services
Administration, Climatological Data, 1972. Station of record:
Lexington, Kentucky.

**Also on earlier dates, months or years.

HISTORY

Hardin County lies in the north central area of the state, its northern tip extending to the Ohio River. Rolling Fork of Salt River flows along its northeastern boundary. Rough River forms a part of the southwestern border, and Nolin River meanders through the southern portion of the county. The county's 616 square miles of territory is hilly in the north rolling in the eastern and southern sections, and fairly level in the central area. The soil ranges from thin in the north to fertile in the south.

The first settlers who came to Hardin County included John Severns, after whom the valley in which Elizabethtown is located was first known, and Captain Thomas Helm, Colonel Andrew Hynes, and Samuel Haycraft. They chose the present site of Elizabethtown in 1780 and built three block-houses in a triangle about a mile apart. Also among these early settlers was Christopher Bush, whose daughter, Sarah, became the stepmother of Abraham Lincoln. The second oldest Baptist church in the state was built here in 1781.

Hardin became Kentucky's fifteenth county in 1792 and was named for Colonel John Hardin of Virginia, a Revolutionary War hero who came to Kentucky and fought in the Indian Wars. The first brick house in the county was built by Ben Helm and the first courthouse constructed in 1804. The first newspaper, The Western Intelligencer, was established in 1826.

Elizabethtown, the county seat, was built on land donated by Colonel Andrew Hynes and was named for his wife, Elizabeth. Now an important trade and industrial center, Elizabethtown had a 1970 population of 11,748. Elizabethtown Community College, a two-year institution in the University of Kentucky system, has an enrollment of over 800.

Radcliff, to the north, had a population of 7,881 in 1970, Vine Grove 2,987, West Point, on the Ohio, had 1,741 and Upton, to the south, had 552. Also in Hardin County is Fort Knox, depository for the nation's gold supply and a major army post.

Hardin County's population was 3,653 in 1800, and it has grown steadily and then rapidly since 1940. In 1950 the total had reached 50,312, by 1960 it was 67,789, and in 1970 it was 78,421.

Agriculture accounted for 1,160 of the county's 20,300 jobs in 1972, with burley tobacco, corn, cattle, hogs, and milk the principal products. Since 1963 nearly 2,000 manufacturing jobs have been added for a total of

2,600 in 1973. Largest of the county's firms are: Colt Industries, producing ceramic and alnico magnets; Gates Rubber Company, which makes auto V-belts; E-town Sportswear Company, making men's slacks; and Ingraham Industries, which makes electrical devices.

Transportation access to Hardin County is excellent, with Interstate 65, the Blue Grass Parkway, and the Western Kentucky Parkway converging at Elizabethtown.

Among the many noted citizens of Hardin County was Thomas Lincoln, who lived for a while at Elizabethtown. Lincoln and his son, Abraham, later lived at Knob Creek, then a part of Hardin County. President James Buchanan also lived for a time at Elizabethtown. John L. Helm was Governor of Kentucky twice, and John Young Brown was also elected Governor. Duff Green, a member of President Andrew Jackson's "Kitchen Cabinet," lived in Hardin County, as did General George Custer during the time in which he wrote My Life on the Plains.