

1980

# Industrial Resources: Henry County - New Castle and Campbellsburg

Kentucky Library Research Collection  
Western Kentucky University, [spcol@wku.edu](mailto:spcol@wku.edu)

Follow this and additional works at: [https://digitalcommons.wku.edu/henry\\_cty](https://digitalcommons.wku.edu/henry_cty)



Part of the [Business Administration, Management, and Operations Commons](#), [Growth and Development Commons](#), and the [Infrastructure Commons](#)

---

## Recommended Citation

Kentucky Library Research Collection, "Industrial Resources: Henry County - New Castle and Campbellsburg" (1980). *Henry County*. Paper 9.  
[https://digitalcommons.wku.edu/henry\\_cty/9](https://digitalcommons.wku.edu/henry_cty/9)

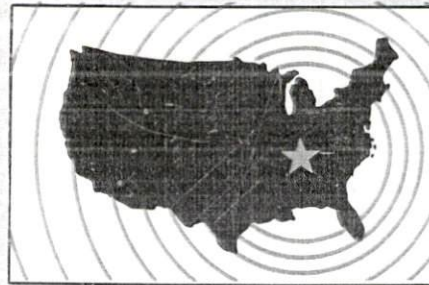
This Report is brought to you for free and open access by TopSCHOLAR®. It has been accepted for inclusion in Henry County by an authorized administrator of TopSCHOLAR®. For more information, please contact [topscholar@wku.edu](mailto:topscholar@wku.edu).

# *INDUSTRIAL RESOURCES*

**CAMPBELLSBURG**

**NEW CASTLE**

*Kentucky  
first*

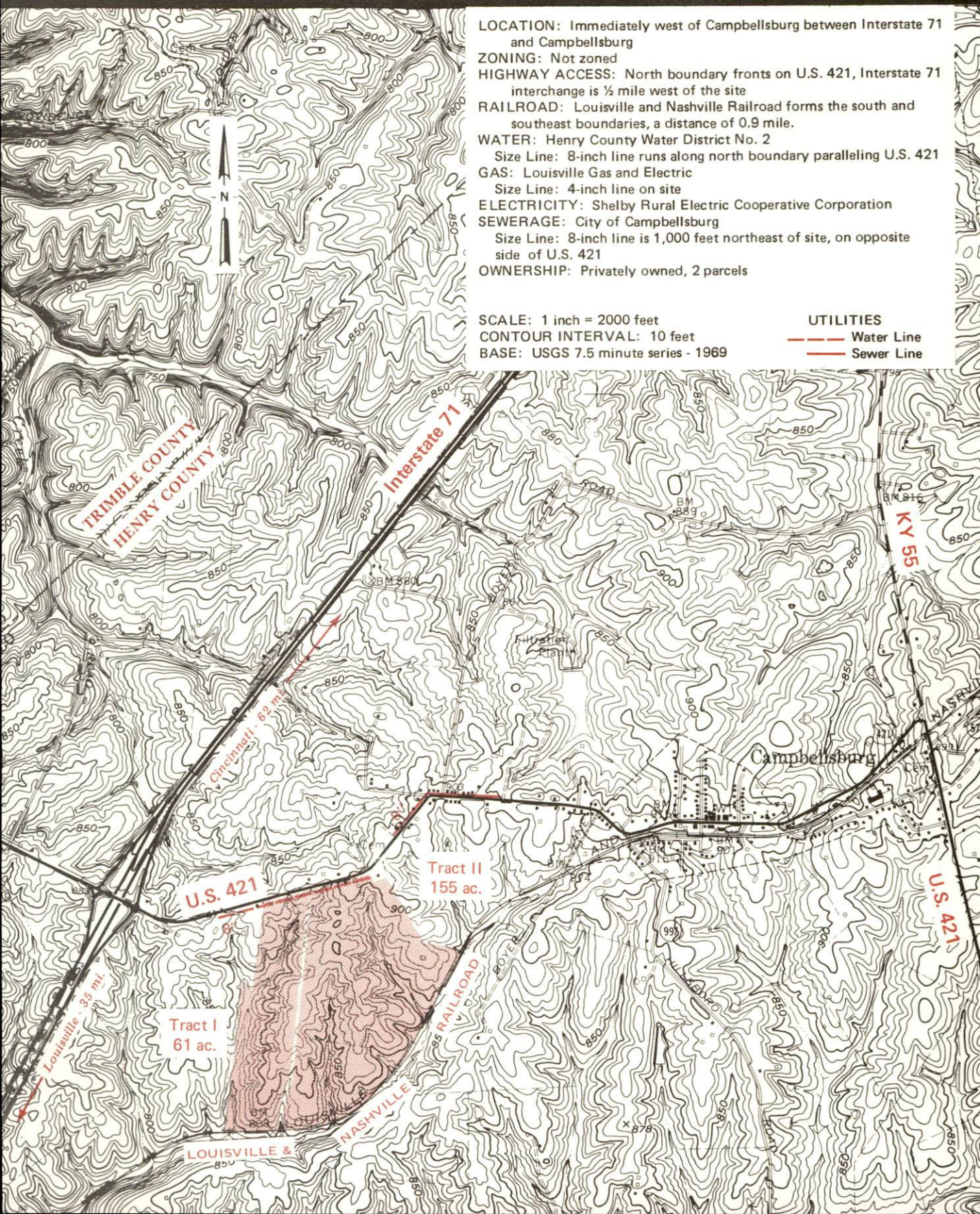


**DEPARTMENT OF COMMERCE**



# CAMPBELLSBURG, KENTUCKY --- Site No. 180 -- 216 Acres

For more information contact Hugh T. Brown, 3226 Old Sligo Road, La Grange, Kentucky 40031, phone 502-222-9913, or the Industrial Development Division, Kentucky Department of Commerce, Capital Plaza Tower, Frankfort, Kentucky 40601, 502-564-7140.





INDUSTRIAL RESOURCES  
NEW CASTLE AND CAMPBELLSBURG, KENTUCKY

Prepared by  
The Kentucky Department of Commerce  
Division of Research and Planning  
in cooperation with  
The Cities of New Castle and Campbellsburg

1980



Program supervisor - Pamela Riley; research - John McMurray;  
clerical - Linda Fint and Jody Allphin; graphics - Frank Ferrante,  
Tony Cecconi, Richard Spencer; cartography - Industrial Development  
Division. Cost of printing paid from state funds.

# TABLE OF CONTENTS

<u>Chapter</u>	<u>Page</u>
INDUSTRIAL SITES . . . . .	i
SUMMARY OF INDUSTRIAL RESOURCES - NEW CASTLE AND CAMPBELLSBURG, KENTUCKY . . . . .	1
THE LABOR MARKET AREA . . . . .	7
Population . . . . .	7
Labor Force Characteristics of Residents, 1979 . . . . .	7
New Castle Manufacturing Firms, Their Products and Employment . . . . .	8
Labor Organizations . . . . .	8
Industrial Services . . . . .	8
Estimated Male Labor Supply . . . . .	9
Estimated Female Labor Supply . . . . .	9
Average Weekly Wages by Industry, by Place of Work 1978 . . . . .	10
Per Capita Personal Income . . . . .	12
TRANSPORTATION . . . . .	13
Rail . . . . .	13
Highways . . . . .	13
Truck Service . . . . .	14
Air . . . . .	15
Bus . . . . .	15
Water . . . . .	15
POWER AND FUEL . . . . .	16
Electricity . . . . .	16
Natural Gas . . . . .	17
Other Fuels . . . . .	17
WATER AND SEWERAGE . . . . .	18
Water . . . . .	18
Sewerage . . . . .	20
CLIMATE . . . . .	21

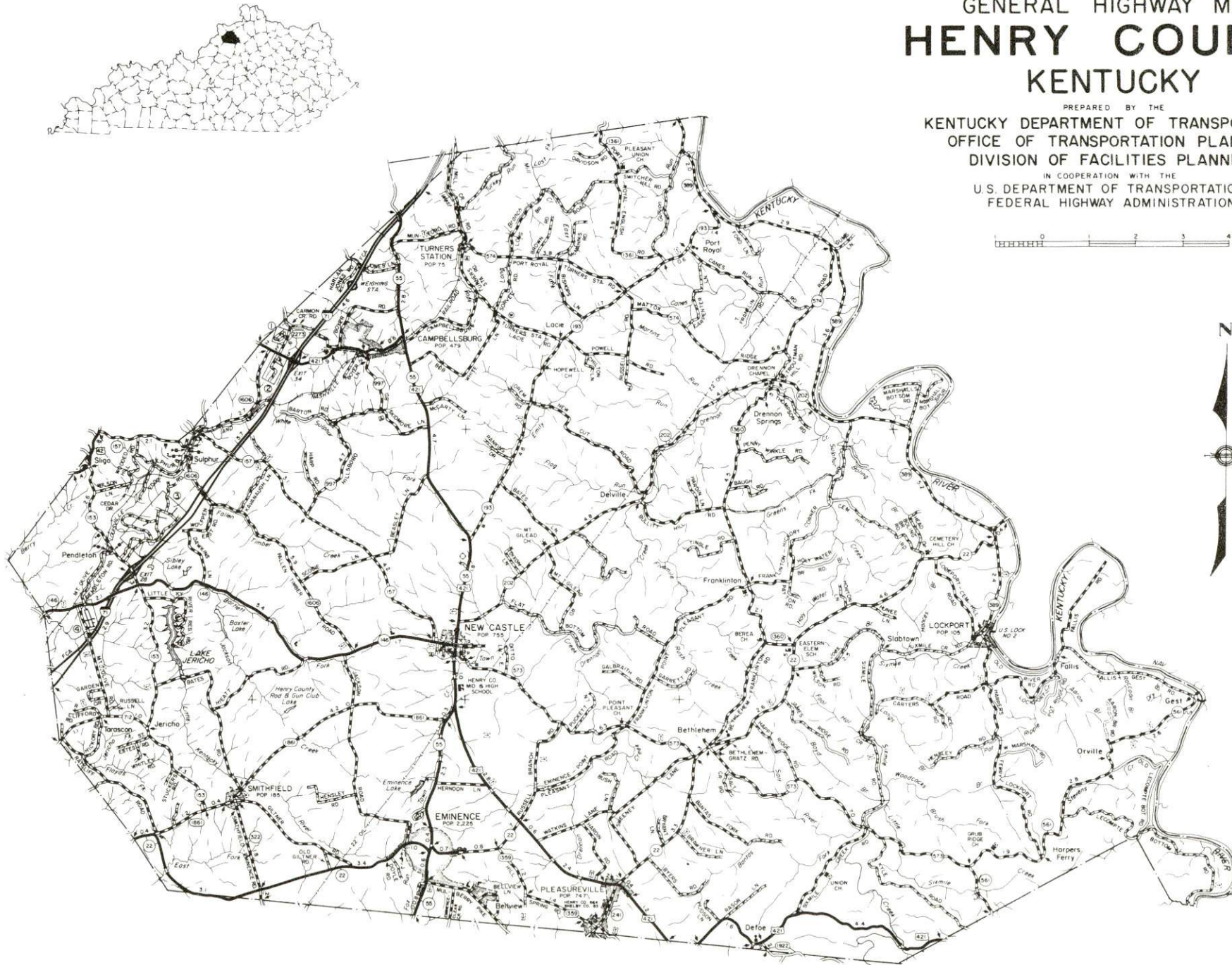


<u>Chapter</u>	<u>Page</u>
LOCAL GOVERNMENT . . . . .	22
City . . . . .	22
County . . . . .	22
Assessed Value of Property, 1979 . . . . .	22
Property Taxes . . . . .	23
Combined State and Local Rates Per \$100 Valuation, 1979 . . . . .	23
Utilities Gross Receipts Tax for Schools . . . . .	24
Planning and Zoning . . . . .	24
Safety . . . . .	24
Police . . . . .	24
Fire . . . . .	24
Rescue Service . . . . .	24
Refuse Collection and Disposal . . . . .	25
EDUCATION . . . . .	26
Public Schools . . . . .	26
Area Colleges and Universities . . . . .	27
Vocational Schools . . . . .	28
HEALTH . . . . .	30
Local Medical Personnel . . . . .	30
Hospitals . . . . .	30
Other Medical Facilities . . . . .	31
Ambulance Service . . . . .	31
Public Health . . . . .	31
OTHER LOCAL FACILITIES . . . . .	32
Communications . . . . .	32
Library Services . . . . .	33
Religious Institutions . . . . .	33
Financial Institutions . . . . .	33
Hotels and Motels . . . . .	33
Clubs and Organizations . . . . .	34
RECREATION . . . . .	35
COMMUNITY IMPROVEMENTS . . . . .	37

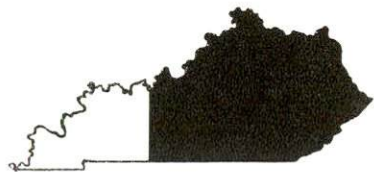
1979 EDITION  
GENERAL HIGHWAY MAP  
**HENRY COUNTY**  
**KENTUCKY**

PREPARED BY THE  
KENTUCKY DEPARTMENT OF TRANSPORTATION  
OFFICE OF TRANSPORTATION PLANNING  
DIVISION OF FACILITIES PLANNING  
IN COOPERATION WITH THE  
U.S. DEPARTMENT OF TRANSPORTATION  
FEDERAL HIGHWAY ADMINISTRATION

0 1 2 3 4 MILES

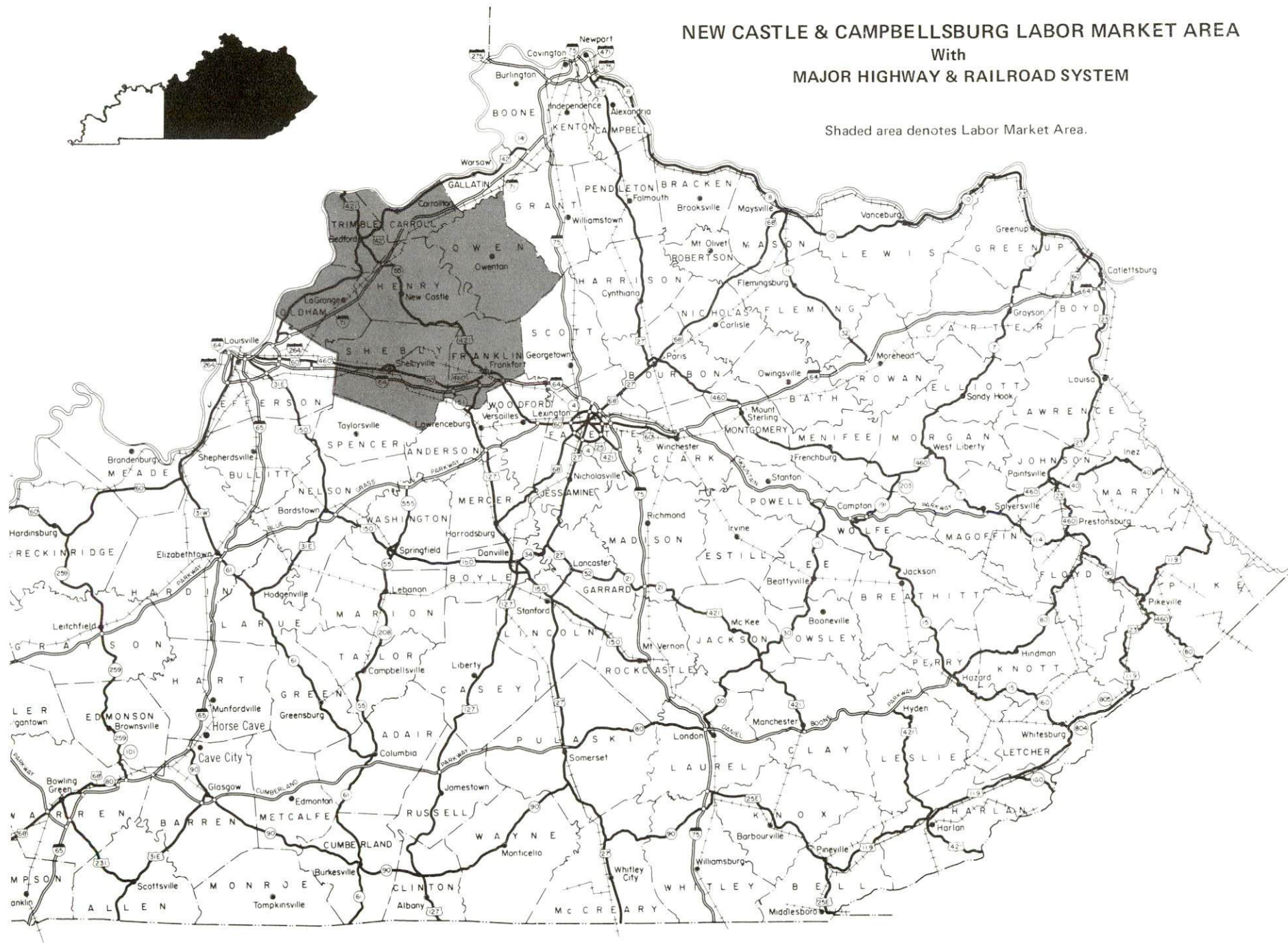






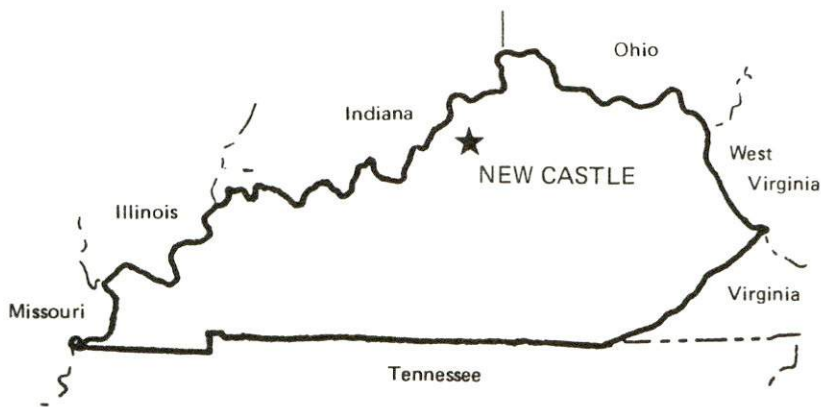
# NEW CASTLE & CAMPBELLSBURG LABOR MARKET AREA With MAJOR HIGHWAY & RAILROAD SYSTEM

Shaded area denotes Labor Market Area.



# SUMMARY OF INDUSTRIAL RESOURCES NEW CASTLE AND CAMPBELLSBURG, KENTUCKY

## LOCATION



## Road Distance in Miles from New Castle:

Atlanta	420	Baltimore	572
Chicago	330	Detroit	334
New York	722	St. Louis	301

## POPULATION

City of New Castle, 1977	763
City of Campbellsburg, 1977	509
Henry County, 1978	11,700
Labor Market Area, 1978	118,800
% Nonwhite, Henry County, 1978	7.5

## LABOR ANALYSIS

Labor Market Area - Henry, Carroll, Franklin, Oldham, Owen, Shelby, and Trimble Counties

Estimated available workers from labor market area, 1978:

Male	3,772	Female	3,573
Unemployment rate, 1979		Labor Market Area	4.3%
Henry County	4.7%	Owen County	5.6%
Carroll County	4.3%	Shelby County	3.7%
Franklin County	3.9%	Trimble County	8.5%
Oldham County	4.2%		



Total employment, Henry County, 1979 - 4,930  
 Manufacturing employment in labor market area, 1978 - 7,946  
 Local manufacturing plants:

<u>Name</u>	<u>Employment</u>
<u>The Henry County Local Company, Inc.</u>	<u>7</u>
<u>Inland Chemical Corporation</u>	<u>26</u>
<u>Myers and Son Manufacturing Company, Inc.</u>	<u>34</u>

Labor unions in local manufacturing plants:

Independent Employees Union

#### INDUSTRIAL SERVICES

	<u>Location</u>	<u>Mileage from New Castle</u>
Tool & Die, Machine & Pattern Shops	<u>Simpsonville;</u> <u>Frankfort</u>	<u>23</u> <u>30</u>
Metal Service Centers	<u>Louisville</u>	<u>38</u>
Heat Treating	<u>Louisville;</u> <u>Georgetown</u>	<u>38</u> <u>48</u>
Metal Finishers	<u>Frankfort;</u> <u>Louisville</u>	<u>30</u> <u>38</u>
Electric Motor Repair	<u>Louisville</u>	<u>38</u>

#### TRANSPORTATION

Rail:

Railroad - Louisville and Nashville Railroad serves Campbellsburg  
 Distance to nearest piggyback - 38 miles

Highways:

Interstate - I-71, 2 miles from Campbellsburg and 10 miles from  
New Castle  
 U.S. Highway - U.S. 421 serves both New Castle and Campbellsburg

Truck:

Number of interstate motor carriers - 4; Local terminals - 0

Air:

Nearest scheduled airline service - Standiford Field, Louisville  
 Distance - 41 miles southwest of New Castle; Airlines serving -  
American, Delta, Eastern, Ozark, Piedmont, TWA, USAir, and  
Air Kentucky (commuter)

Water:

Nearest navigable river - Ohio River

Nearest public port - Louisville

Distance - 38 miles from New Castle and Campbellsburg

UTILITIES AND SERVICES

Electricity:

New Castle and Campbellsburg

Local distributor - Kentucky Utilities Company

Source of power - Kentucky Utilities Company

Natural Gas:

New Castle and Campbellsburg

Local distributor - Louisville Gas and Electric Company

Source of supply - Texas Gas Transmission Company

Available for new industry - Yes, on a limited basis

Other Fuels:

Number of area propane distributors - 3

Number of area distillate fuel oil distributors - 6

Water, treated:

New Castle

Local supplier - Municipal system which is supplied by Henry County  
Water District #2

Excess capacity of water district - 478,000 gpd

Municipal storage capacity - 50,000 gallons

Campbellsburg

Local supplier - Municipal system which is supplied by Henry County  
Water District #2

Excess capacity of water district - 478,000 gpd

Municipal storage capacity - 75,000 gallons

Water, raw:

Sources for industrial use - The Kentucky River and the Little  
Kentucky River

Sewer:

New Castle

Excess treatment capacity - None

Planned expansions - New 1,000,000 gpd treatment plant

Campbellsburg

Excess treatment capacity - 35,000 gpd

Planned expansions - No

CLIMATE

Temperature, Normal - 55.2 degrees F.

Precipitation, Normal - 44.49 inches

Snowfall, Mean Annual - 16.7 inches

Prevailing winds - South

Relative humidity (%) - 7 a.m. 81; 7 p.m. 64

GOVERNMENT

New Castle

Type - Board of Trustees

Police personnel - full-time - 3

Fire department personnel - volunteer - 23

Fire insurance rating (A.I.A.), class - Inside city - 7  
Outside city - 10

Campbellsburg

Type - Board of Trustees

Police personnel - full-time - 2

Fire department personnel - volunteer - 30

Fire insurance rating (A.I.A.), class - Inside city - 7  
Outside city - 10



## TAXES

### Property taxes:

Combined state and local rates per \$100 valuation, 1979  
(100% assessment)

	<u>Inside City of New Castle</u>	<u>Inside City of Campbellsburg</u>	<u>Outside City</u>
1. Land and buildings	\$1.037	\$1.032	\$0.797
2. Mfg. machinery, raw materials, goods in process, pollution control equipment	0.150	0.150	0.150
3. Finished goods, office equipment, vehicles, other tangibles	1.208	1.203	0.968
4. Intangibles (accounts receivable, notes, bonds, etc.)	0.250	0.250	0.250
5. Leaseholds in I. R. bond financed plants	0.015	0.015	0.015

### Special local taxes:

Utilities tax - 3% of electric, gas, water, sewer, telephone services

## EDUCATION

Nearest state vocational-technical school - Jefferson State Vocational-Technical School at Louisville, 38 miles from New Castle  
Nearest area vocational education center - Shelby County Area Vocational Education Center at Shelbyville, 16 miles from New Castle  
Nearest college or university - Kentucky State University at Frankfort, 30 miles from New Castle

### Public Schools:

High school enrollment - 648; Student/teacher ratio - 20-1  
Middle school enrollment - 508; Student/teacher ratio - 20-1  
Elementary school enrollment - 913; Student/teacher ratio - 21-1

## MEDICAL

Number of physicians locally - 3; Number of dentists locally - 2  
Nearest Hospitals - Carroll County Memorial Hospital at Carrollton and King's Daughters' Hospital at Shelbyville; Total number of beds - 130

## COMMUNICATIONS

Local newspapers - Henry County Local - Weekly;  
Patriot-Statesman - Weekly  
Television reception - Louisville and Lexington, Kentucky; Cincinnati, Ohio

### RELIGIOUS FACILITIES

Churches - 8 in New Castle, 6 in Campbellsburg

Nearest synagogues - Louisville, 38 miles from New Castle

### FINANCIAL INSTITUTIONS

Banks - 1; Total assets - \$30,701,971.85

### PUBLIC LODGING

Total number hotels and motels - 2; Total rooms - 13

### RECREATIONAL FACILITIES

New Castle and Campbellsburg

Parks; Tennis courts; Baseball diamonds; Country club with swimming pool and golf course

Nearest state resort park - General Butler State Resort Park  
Camping; Swimming; Fishing; Boating; Lodgings; Dining facility;  
Open year round

# THE LABOR MARKET AREA

Area	POPULATION		Percent Nonwhite**
	1978*	1970	
New Castle	763**	755	N/A
Campbellsburg	509**	479	N/A
Labor Market Area	118,800	100,419	N/A
Henry County	11,700	10,910	7.5
Carroll County	8,800	8,523	2.7
Franklin County	39,200	34,481	8.5
Oldham County	23,600	14,687	5.9
Owen County	8,300	7,470	3.3
Shelby County	21,300	18,999	13.2
Trimble County	5,900	5,349	0.1

\*Provisional Estimates.

\*\*1977 Population Estimates; 1970 Percent Nonwhite for cities; 1978 Percent Nonwhite for counties.

Sources: U.S. Department of Commerce, Bureau of the Census, Census of Population, 1970. U.S. Department of Commerce, Bureau of the Census, Current Population Reports, Series P-25, No. 830, October 1979; Series P-26, No. 78-17, August 1979. University of Louisville, Urban Studies Center, Population Research Unit, "Kentucky's Population Disaggregations of 1978 Estimates," January 1980.

## LABOR FORCE CHARACTERISTICS OF RESIDENTS, 1979

	Henry County	Labor Market Area
Civilian Labor Force	5,550	54,394
Employment	5,289	52,054
Agricultural	1,005	5,216
Nonagricultural	4,284	46,838
Unemployment	261	2,340
Rate of Unemployment (%)	4.7	4.3

Source: Kentucky Department for Human Resources, Kentucky Labor Force Estimates, Annual Averages, 1979.



NEW CASTLE MANUFACTURING FIRMS,  
THEIR PRODUCTS AND EMPLOYMENT

<u>Firm (Establishment date)</u>	<u>Product</u>	<u>Employment</u>			<u>Organized</u>
		<u>Total</u>	<u>Male</u>	<u>Female</u>	
The Henry County Local Company, Inc. (1876)	Newspaper, job printing	7	2	5	
Inland Chemical Corporation (1970)	Solvent mixes, paint thinner	26	25	1	*
Meyers and Son Manufacturing Company, Inc. (1960)	Men's work clothing	34	32	2	

\*See Labor Organizations below.

Source: Kentucky Department of Commerce, Division of Research and Planning.

LABOR ORGANIZATIONS

<u>Union</u>	<u>Representing manufacturing workers at:</u>
Independent Employees Union	Inland Chemical Corporation

INDUSTRIAL SERVICES

	<u>Location</u>	<u>Mileage from New Castle</u>
Tool & Die, Machine & Pattern Shops	Simpsonville	23
	Frankfort	30
Metal Service Centers	Louisville	38
Heat Treating	Louisville	38
	Georgetown	48
Metal Finishers	Frankfort	30
	Louisville	38
Electric Motor Repair	Louisville	38

Sources: Kentucky Directory of Selected Industrial Services, 1979.

Kentucky Department of Commerce, Division of Research and Planning.

ESTIMATED MALE LABOR SUPPLY  
NEW CASTLE AND CAMPBELLSBURG LABOR MARKET AREA

Area	Current			Future	
	Total	Not in Labor Force	Unemployed	Under-employed	Reaching 18 years of age before 1986
Labor Market Area	3,772	801	1,051	1,920	4,533
Henry	362	86	106	170	461
Carroll	274	61	73	140	425
Franklin	1,260	260	370	630	1,515
Oldham	720	148	162	410	618
Owen	345	65	110	170	326
Shelby	630	141	179	310	910
Trimble	181	40	51	90	278

Sources: Kentucky Department for Human Resources, Kentucky Labor Supply Estimates by County, 1978. Kentucky Department of Commerce, Future Labor Supply Before 1986.

ESTIMATED FEMALE LABOR SUPPLY  
NEW CASTLE AND CAMPBELLSBURG LABOR MARKET AREA

Area	Current			Future	
	Total	Not in Labor Force	Unemployed	Under-employed	Reaching 18 years of age before 1986
Labor Market Area	3,573	338	1,125	2,110	4,334
Henry	346	34	112	200	452
Carroll	314	26	78	210	380
Franklin	1,323	120	413	790	1,502
Oldham	529	52	157	320	645
Owen	255	24	111	120	284
Shelby	655	65	200	390	836
Trimble	151	17	54	80	235

Sources: Kentucky Department for Human Resources, Kentucky Labor Supply Estimates by County, 1978. Kentucky Department of Commerce, Future Labor Supply Before 1986.

AVERAGE WEEKLY WAGES BY INDUSTRY,  
BY PLACE OF WORK, 1978

	<u>Henry County</u>	<u>Carroll County</u>	<u>Franklin County</u>	<u>Oldham County</u>
All Industries	\$152.44	\$208.91	\$198.53	\$168.60
Mining & Quarrying	*	*	*	*
Contract Construction	121.41	271.82	276.50	*
Manufacturing	205.00	234.51	221.82	206.84
Transportation, Communications & Public Utilities	178.32	294.23	286.35	188.30
Wholesale & Retail Trade	106.58	118.81	130.84	144.31
Finance, Insurance & Real Estate	*	197.29	231.62	177.41
Services	107.92	104.96	195.90	122.54
Other	*	*	*	148.94

	<u>Owen County</u>	<u>Shelby County</u>	<u>Trimble County</u>
All Industries	\$170.67	\$164.73	\$109.43
Mining & Quarrying	0	0	0
Contract Construction	146.13	152.56	98.28
Manufacturing	*	199.41	114.03
Transportation, Communications & Public Utilities	283.89	247.36	0
Wholesale & Retail Trade	134.41	131.07	75.41
Finance, Insurance & Real Estate	*	184.59	173.46
Services	160.41	133.96	108.78
Other	*	*	*

\*Not disclosed.

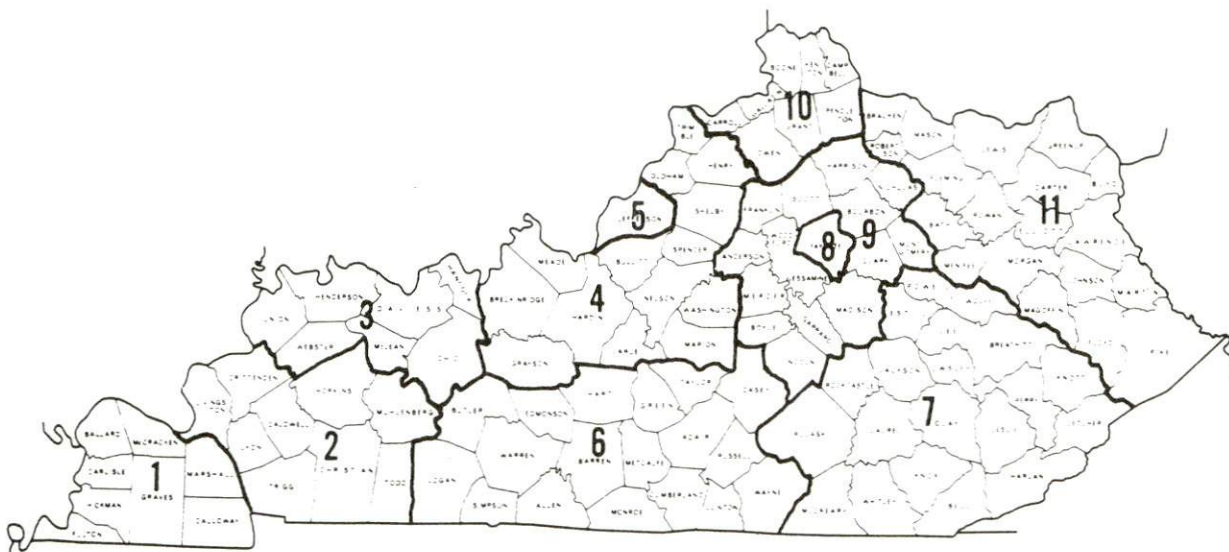
Note: Excludes domestic workers, railway workers; certain nonprofit corporations; majority of federal, state, and local government workers; and self-employed workers.

Source: Kentucky Department for Human Resources, Average Weekly Wages of Workers Covered by Kentucky Unemployment Insurance Law, 1978.



Occupational wage rates for specific industries are usually not available to most government agencies, and wage data furnished to state employment agencies by individual industrial employers is protected from disclosure by federal law. The most reliable up-to-date wage information can be obtained by direct contact with local employers.

Associated Industries of Kentucky, a voluntary organization of Kentucky businesses, regularly collects occupational wage rates and fringe benefits data from participating member firms. Data is compiled for over 127 clearly defined office, production, and service occupations. Tabulations are published for eleven regions of Kentucky, as shown on the map below. It should be noted that the data may be weighted by the preponderance of firms in the larger cities and may be somewhat higher than the rates paid in the smaller communities. Data from these tabulations are available, upon request, from the Kentucky Department of Commerce, Frankfort, Kentucky 40601.



Associated Industries of Kentucky Area Wage Surveys

PER CAPITA PERSONAL INCOME

<u>Area</u>	<u>1978</u>	<u>1974</u>	<u>Percent Change</u>
Henry County	\$6,156	\$4,614	33.4
Labor Market Area			
Range	\$4,869 - 7,697	\$3,913 - 5,107	N/A
Kentucky	6,605	4,524	46.0
U.S.	7,840	5,428	44.4

Source: U.S. Department of Commerce, Bureau of Economic Analysis,  
April 1980.

## TRANSPORTATION

### Rail

Line serving Campbellsburg - Louisville and Nashville Railroad

Services - Main line; 1 local turnaround freight from Louisville to Decoursey stops ever other day; 4 northbound and 4 southbound through freights daily; team track space for 8 cars; piggyback facilities are located at Louisville, 38 miles southwest of Campbellsburg, and at Frankfort, 38 miles southeast of Campbellsburg

For details on routing, schedules, rates, and services, contact:

Director of Industrial Development  
Louisville and Nashville Railroad Company  
908 West Broadway  
Louisville, Kentucky 40201  
(502) 587-5723

New Castle is not served directly by a rail line.

### Highways

An interchange of Interstate 71, which is the major highway between Cincinnati and Louisville, is located in Henry County only 2 miles from Campbellsburg and 10 miles from New Castle. U.S. Highway 421 connects both these cities with the Interstate highway. In addition, New Castle is served by Kentucky Highways 146, 157, 202 and 573.



## Truck Service

### Company

### Home Office

#### New Castle

Cooper-Jarrett, Inc.*	Hanover Plaza Morristown, New Jersey 07960
Owenton Express, Inc.**	P. O. Box 328 Carrollton, Kentucky 41008
Wilson Freight Company*	11353 Reed Hartman Highway Cincinnati, Ohio 45241

#### Campbellsburg

Cooper-Jarrett, Inc.*	Hanover Plaza Morristown, New Jersey 07960
E. & G. Motor Express, Inc.**	U.S. 42 West Carrollton, Kentucky 41008
Owenton Express, Inc.**	Route 2 Owenton, Kentucky 40359

#### Other Freight Services

#### Nearest Shipping Center

Purolator Courier Corporation***	Louisville, 38 miles from New Castle
United Parcel Service***	Louisville, 38 miles from New Castle

### HIGHWAY MILES AND TRUCK TRANSIT TIME IN DAYS FROM NEW CASTLE, KENTUCKY, TO SELECTED MARKET CENTERS

City	Delivery		City	Delivery	
	Highway Miles	Time TL		Highway Miles	Time TL
Atlanta, Ga.	420	2	Los Angeles, Ca.	2,146	4
Baltimore, Md.	572	2	Louisville, Ky.	38	1
Birmingham, Ala.	402	2	Nashville, Tenn.	206	1
Chicago, Ill.	330	1	New Orleans, La.	723	3
Cincinnati, Ohio	75	1	New York, N. Y.	722	3
Cleveland, Ohio	319	2	Pittsburgh, Pa.	362	2
Detroit, Mich.	334	2	St. Louis, Mo.	301	1
Knoxville, Tenn.	241	1			

Source: Delivery Time Only - Owenton Express, P. O. Box 328,  
Carrollton, Kentucky 41008.

\*Interstate service only.

\*\*Interstate and intrastate service.

\*\*\*For regular scheduled pickups or for occasional pickups, arrangements must be made with the Louisville office of Purolator Courier Corporation or United Parcel Service.

## Air

### Nearest Scheduled Airline Service

Location: Standiford Field  
4 1/2 miles southeast of center of  
Louisville, Kentucky; 41 miles  
southwest of New Castle

Runways: 3 paved  
Length: 7,800 feet; 7,250 feet; 5,000 feet

Traffic Control: Control tower

Lighting: Runways, obstructions, beacon and  
approach and touchdown lights,  
center line on one runway

Services: American, Delta, Eastern, Ozark,  
Piedmont, TWA and USAir airlines;  
Air Kentucky commuter air carrier;  
100 octane and jet fuel; major  
A & E repairs; storage; Louisville-  
Jefferson County Air Board; Hertz,  
Avis, National and Budget rental  
car services; taxi, city bus  
service; restaurant

Air Freight Service: Air freight terminal

### New Castle

### Campbellsburg

#### Bus -

Greyhound Bus service  
is available at  
Shelbyville, 16 miles  
south of New Castle

Greyhound Bus service  
is available at  
Carrollton, 14 miles  
north of Campbellsburg

## Water

Campbellsburg is located 14 miles south of a point on the Ohio River at Carrollton. Port facilities are located on the Ohio River at Louisville, 38 miles southwest of Campbellsburg and New Castle. Louisville has also been classified as a Foreign Trade Zone and offers complete U.S. customs services for exports and imports.

## POWER AND FUEL

### Electricity

Company serving New Castle, Campbellsburg and parts of  
Henry County - Kentucky Utilities Company  
Source of power - Kentucky Utilities Company  
Total generating capacity - 2,238,400 KW  
For industrial rates contact:

Industrial Development Department  
Kentucky Utilities Company  
One Quality Street  
Lexington, Kentucky 40507  
(606) 255-1461

Company serving the major portion of Henry County - Shelby Rural  
Electric Cooperative Corporation  
Source of power - East Kentucky Power Cooperative  
Total generating capacity - 867,000 KW  
For industrial rates contact:

Industrial Development Division  
East Kentucky Power Cooperative  
P. O. Box 707  
Winchester, Kentucky 40391  
(606) 744-4812

and/or

Shelby RECC  
P. O. Box 311  
Shelbyville, Kentucky 40065  
(502) 633-4420



## Natural Gas

Company serving New Castle and Campbellsburg - Louisville Gas and Electric Company

Source of supply - Texas Gas Transmission Corporation

Size of transmission mains - 30 and 26 inches (supplier);  
4-inch (distributor)

Distribution mains - 4 and 2 inches

Distribution pressure - 35 psi

Btu content - 1,025 per cubic foot

Specific gravity - 0.5801

For rates and supplies contact:

Manager

Gas Market Services

Louisville Gas and Electric Company

P. O. Box 32010

Louisville, Kentucky 40232

(502) 566-4255

## Other Fuels

### Propane

Big 3 Gas Company of  
Shelby County

U.S. 60 West

Shelbyville, Kentucky 40065

Silgas, Inc.

Old Finchville Road

Shelbyville, Kentucky 40065

Southern States Henry Cooperative

Elm Street

Eminence, Kentucky 40019

### Fuel oils

Distillate fuel oil -

Barnett Oil Company, Inc.  
(Sunoco)

Campbellsburg, Kentucky 40011

Marathon Oil Company

South Main Street

Eminence, Kentucky 40019

L. D. Chapman Distributing, Inc.  
(Chevron)

614 Park Avenue

Carrollton, Kentucky 41008

J. T. Moore Oil Company (Texaco)

Pendleton, Kentucky 40055

and

Sulpher, Kentucky 40070

Crume-Hundley Oil Company  
(Ashland)

801 South Third Street

Shelbyville, Kentucky 40065

WPB Oil Company, Inc.  
(Shell)

Goodman Avenue

Shelbyville, Kentucky 40065

Residual fuel oil - Arrangements must be made with the refinery.

Low sulphur content coal - Available in Kentucky.

## WATER AND SEWERAGE

### Water

Company serving New Castle - New Castle Water Company  
Cross Main Street  
New Castle, Kentucky 40050  
(502) 845-2900

Source of supply of treated water - Henry County Water District #2  
Average daily consumption - 80,000 gallons  
Peak daily consumption - 110,000 gallons  
Storage capacity - 50,000 gallons  
Size lines - 6, 4 and 2 inches  
Average pressure - 48 psi  
Average temperature - 42 degrees F.

#### MONTHLY WATER RATES

First	2,000 gallons	\$5.40 (Minimum)
Next	2,000 gallons	1.75 per M gallons
Next	2,000 gallons	1.45 per M gallons
Next	4,000 gallons	1.30 per M gallons
All over	10,000 gallons	1.20 per M gallons

Tap-on charge: \$125

Company serving Campbellsburg - Campbellsburg Water Works  
Campbellsburg, Kentucky 40011  
(502) 532-7516

Source of supply of treated water - Henry County Water District #2  
Average daily consumption - 43,000 gallons  
Peak daily consumption - 45,000 gallons  
Storage capacity - 75,000 gallons  
Size lines - 6 and 4 inches  
Average pressure - 60 psi  
Average temperature - 60 degrees F.

#### MONTHLY WATER RATES

First	2,000 gallons	\$9.00 (Minimum)
Next	8,000 gallons	1.25 per M gallons
All over	10,000 gallons	1.00 per M gallons

Tap-on charge: 3/4-inch tap - \$300  
Larger than 3/4-inch tap - \$300 plus cost

Name of water district - Henry County Water District #2

P. O. Box 219

Campbellsburg, Kentucky 40011

(502) 532-6279

Area served - Henry, Trimble, Oldham, and Carroll Counties

Date when water district began operating - 1969

Source of raw water - Wells

Capacity of treatment plant - 1,728,000 gallons per day

Type of treatment - Chlorination and fluoridation

Average amount of water used in a 24-hour period - 1,000,000 gallons

Peak amount of water used in a 24-hour period - 1,250,000 gallons

Storage capacity - 275,000 gallons

Average pressure - 115 psi

Average temperature - 60 degrees F.

Size lines - 12, 10, 8, 6, 4 and 3 inches

Monthly rates -

First	2,500 gallons	\$7.50 (Minimum)
Next	2,500 gallons	2.45 per M gallons
Next	5,000 gallons	1.65 per M gallons
Next	10,000 gallons	1.10 per M gallons
Next	80,000 gallons	0.65 per M gallons
Above	100,000 gallons	0.55 per M gallons

Tap-on charge: \$200

Surface water sources - Kentucky River, impounded small streams

Average discharge - Kentucky River at Lockport, 8,305 cfs

(53-year record, USGS)

Expected ground water yield - 50 to 200 gpm along southern portion of the Kentucky River Valley; 5 to 50 gpm along northern portion of the Kentucky River Valley; 5 gpm or less in the remaining portion of the county



## Sewerage

Company serving New Castle - New Castle Sewerage System\*  
Cross Main Street  
New Castle, Kentucky 40050  
(502) 845-2900

Design capacity - 100,000 gallons per day  
Average daily flow - At capacity  
Treatment - Primary  
Type treatment - Drying beds  
Treated effluent discharged into - Town Creek  
Size of sanitary mains - 8 inches  
Size of storm mains - 12 inches  
Rates - 20 percent of monthly water bill  
Tap-on charge: \$125

Company serving Campbellsburg - Campbellsburg Sewer Department  
Campbellsburg, Kentucky 40011  
(502) 532-7959

Design capacity - 75,000 gallons per day  
Average daily flow - 40,000 gallons  
Treatment - Primary and secondary  
Type treatment - Aeration, clarifier and drying beds  
Treated effluent discharged into - Carmon Creek  
Size of sanitary mains - 8 inches  
Size of storm mains - 20 inches  
Rates -

First	2,000 gallons	\$4.50 (Minimum)
Over	2,000 gallons	Same rate as per water rates

Tap-on charge: \$500

\*Construction is scheduled to begin in 1980 on an improvement to the New Castle Sewerage System. The \$1.2 million project will include a new 1,000,000 gallon per day treatment plant with primary and secondary treatment. A new trunk line will be built and existing lines will be rehabilitated.

## CLIMATE

### Henry County

#### Temperature

Normal (30-year record)	55.2 degrees
Average annual 1978	53.0 degrees
Record highest, September, 1954 (34-year record)	103.0 degrees
Record lowest, January, 1963 (34-year record)	-21.0 degrees
Normal heating degree days (30-year record)	4,729
(Heating degree day totals are the sums of negative departures of average daily temperatures from 65 degrees F.)	

#### Precipitation

Normal (30-year record)	44.49 inches
Mean annual snowfall (34-year record)	16.70 inches
Total precipitation 1978	57.73 inches
Mean number days precipitation (.01 inch or more) (34-year record)	131
Mean number days thunderstorms (34-year record)	47

#### Prevailing Winds (17-year record)

South

#### Relative Humidity

1 a.m.	77 percent (14-year record)
7 a.m.	81 percent (15-year record)
1 p.m.	60 percent (15-year record)
7 p.m.	64 percent (15-year record)

Source: U.S. Department of Commerce, Environmental Science  
Services Administration, Climatological Data, 1978.  
Station of record: Lexington, Kentucky.

## LOCAL GOVERNMENT

### City

#### New Castle

Structure - Board of Trustees - 5 members - 2-year terms  
(Chairman selected)

Budget 1979 - General Fund \$42,925.37

Water and Sewer Fund 82,750.84

Fees and licenses - Business licenses range from \$10 to \$100 per year; unloading license - \$15 per year

#### Campbellsburg

Structure - Board of Trustees - 5 members - 2-year terms  
(Chairman selected)

Budget 1979 - General Fund \$30,000.00

Water and Sewer Fund 77,118.00

Fees and licenses - Business licenses range from \$10 to \$50 per year; unloading license - \$40 per year

### County

Structure - County Judge/Executive - 4-year term;

6 magistrates - 4-year terms

Budget 1979-80 - General Fund \$325,339; Road Fund \$259,600

### Assessed Value of Property, 1979

<u>Classes of Property</u>	<u>New Castle</u>	<u>Campbellsburg</u>	<u>Henry County</u>
Real Estate	\$5,180,600	\$4,637,200	\$125,504,443
Tangibles	1,473,042	716,000	24,401,838



## Property Taxes

All property in Kentucky is assessed at 100 percent of fair cash value.

Land and buildings are taxed by the state and may be taxed by local jurisdictions. The state rate is \$0.279 per \$100 of assessed valuation.

Manufacturing machinery, raw materials inventories, pollution control equipment, and goods in the process of manufacture are not subject to local taxation. The state rate is \$0.15 per \$100.

Other tangible personal property owned by manufacturers (automobiles, trucks, finished goods, office furniture, office equipment) is taxed by the state at \$0.45 per \$100 and may be taxed by local jurisdictions.

Property stored in public warehouses in a transit status is not subject to local taxation. The state rate is only \$0.015 per \$100.

Intangible personal property located in Kentucky (money in hand, shares of stock, notes, bonds, accounts receivable, and other credits) is taxed by the state at \$0.25 per \$100, and is not subject to local taxation.

Private leaseholds in industrial facilities owned by cities or counties and financed by industrial revenue bonds are subject to a state tax of \$0.015 per \$100 of value (essentially the lessee's equity, adjusted for appreciation or depreciation). Local taxation is not permitted.

### Combined State and Local Rates Per \$100 Valuation, 1979\* (100% assessment)

	<u>Inside City of New Castle</u>	<u>Inside City of Campbellsburg</u>	<u>Outside City</u>
1. Land and buildings	\$1.037	\$1.032	\$0.797
2. Mfg. machinery, raw materials, goods in process, pollution control equipment	0.150	0.150	0.150
3. Finished goods, office equipment, vehicles, other tangibles	1.208	1.203	0.968
4. Intangibles (accounts receivable, notes, bonds, etc.)	0.250	0.250	0.250
5. Leaseholds in I. R. bond financed plants	0.015	0.015	0.015

\*Kentucky Department of Commerce.

### Utilities Gross Receipts Tax for Schools

A 3 percent tax is levied on utilities receipts for schools in Henry County. Tax is paid by all consumers of utilities as an add-on to the utilities bills. Exempted are receipts from utilities services that are resold and the receipts from the sale of energy or energy producing fuels that exceed 3 percent of the cost of production in manufacturing, processing, mining or refining.

### Planning and Zoning

New Castle and Campbellsburg do not have planning and zoning commissions at the present time.

Mandatory state codes enforced - Kentucky Plumbing Code, National Electric Code, Kentucky Boiler Regulations and Standards, National Fire Protection Association Standards of Safety (for buildings with an occupancy of less than 100 persons), Kentucky Building Code (modeled after BOCA code and applying to buildings with an occupancy of 100 or more persons)

### Safety

<u>Police</u>	<u>New Castle</u>	<u>Campbellsburg</u>	<u>Henry County</u>
Total staff	3	2	4
Radio-patrol cars	2	1	2
<u>Fire</u>			
American Insurance Association Fire Rating	7	7	10
Volunteers	23	30	52

### Rescue Service

Henry County Ambulance and Rescue Squad:

Number of volunteers - 87

Equipment - 4 fully equipped ambulances; "Jaws of Life" rescue apparatus; 4-wheel drive truck; flood lights, generator.

Boats and motors are available from rescue personnel.

Personnel training - Basic first aid, advanced first aid, emergency medical technician training and cardiopulmonary resuscitation

## Refuse Collection and Disposal

	<u>New Castle</u>	<u>Campbellsburg</u>
Type service	Private	Private
Fee charged:		
residential	\$6.00 monthly	\$4.50 monthly
business	Negotiated	Negotiated
industrial	Negotiated	Negotiated
Collection frequency:		
residential	Weekly	Weekly
business	Negotiated	Negotiated
industrial	Negotiated	Negotiated
Trash pickup	Annual cleanup	Annual cleanup
Disposal method	Sanitary landfill	Sanitary landfill

	<u>Henry County</u>
Type service	Private
Fee charged:	
residential	\$7.50 monthly
business	Negotiated
industrial	Negotiated
Collection frequency:	
residential	Weekly
business	Negotiated
industrial	Negotiated
Trash pickup	---
Disposal method	Sanitary landfill



## EDUCATION

### Public Schools

#### Henry County

Total Enrollment (Fall, 1979)	2,069
Elementary	913
Middle School	508
High School	648
Student-Teacher Ratio	21-1
Elementary	21-1
Middle School	20-1
High School	20-1
Percent High School Graduates to College	23.8
Expenditures Per Pupil (1978-79)	\$1,128.80
Bonded Indebtedness, June 30, 1979	\$1,827,000*

\*Includes refunding issue of \$770,000.

## Area Colleges and Universities

<u>Name</u>	<u>Location (Miles distant)*</u>	<u>Enrollment (Fall, 1979)</u>	<u>Highest Degree Conferred</u>
Kentucky State University	Frankfort (30)	2,180	Masters
Bellarmino College	Louisville (38)	2,095	Masters
Jefferson Community College	Louisville (38)	4,205	Associate
Jefferson Community College, South- west Campus	Louisville (38)	592	Associate
Spalding College	Louisville (38)	928	Masters
University of Louisville	Louisville (38)	19,156	Doctorate, M.D., D.M.D., J.D.
Hanover College	Hanover, Indiana (40)	981	Baccalaureate
Midway Junior College	Midway (43)	328	Associate
Indiana University Southeast	New Albany, Indiana (45)	4,061	Masters**
Georgetown College	Georgetown (48)	1,189	Masters
Lexington Technical Institute	Lexington (59)	2,074	Associate
Transylvania University	Lexington (59)	810	Masters***
University of Kentucky	Lexington (59)	22,899	Doctorate, M.D., D.M.D., J.D.

\*Mileage from New Castle.

\*\*Masters in education only.

\*\*\*Courses in the masters degree program are taught on the Transylvania campus by faculty members of Xavier University of Cincinnati. The degree is issued by Xavier University.

Vocational Schools

Nearest State School

Location	Jefferson State Vocational- Technical School
Miles Distant	Louisville
Curriculum	38 from New Castle
	Agriculture
	Horticulture
	Business and Office
	Accounting-Junior Management
	Clerical
	Data Processing
	Secretarial (Legal & Medical)
	Consumer and Home Economics
	Culinary Arts
	Health and Personal Services Occupations
	Cosmetology
	Child Care Aide
	Dental Assistant
	Licensed Practical Nursing
	Medical Assistant
	Nurse's Aide
	Surgical Technician
	Industrial Education
	Air Conditioning and Refrigeration
	Auto Body Repair
	Auto Mechanics
	Carpentry-Building Trades
	Diesel Mechanics
	Electricity
	Electronics
	Graphic Arts (Printing)
	Machine Shop
	Masonry
	Plumbing
	Welding
	Learning Resource Center

(Contd.)



Nearest Area Education Center

Location	Shelby County Area Vocational Education Center
Miles Distant	Shelbyville 16 from New Castle
Curriculum	Business and Office Accounting/Jr. Management Clerical Secretarial Industrial Auto Mechanics Carpentry-Building Trades Electricity Machine Shop Welding

Arrangements can be made to provide training in the specific production skills required by an industrial plant. Instruction may be conducted either in the vocational school or in the industrial plant, depending upon the desired arrangement and the availability of special equipment.

## HEALTH

### Local Medical Personnel

Physicians - 2 in New Castle  
                  1 in Campbellsburg  
Dentists - 2 in Campbellsburg

### Hospitals

<u>General Hospital</u>	<u>Location</u>	<u>Beds</u>
Carroll County Memorial Hospital	Carrollton, 20 miles from New Castle	54
The King's Daughters' Hospital	Shelbyville, 16 miles from New Castle	76

#### Carroll County Memorial Hospital

General hospital facilities - Operating room, recovery room, emergency room, X-ray, laboratory, OB section, nursery, blood bank, physical therapy, electrocardiography, cardiac monitors, respiratory therapy, and endoscopic procedures

Medical staff - 7 doctors, 16 registered nurses, 11 graduate licensed practical nurses, 3 medical technologists, 2 X-ray technicians, 1 respiratory therapist, 1 physical therapist, 3 medical records technicians

#### The King's Daughters' Hospital

General hospital facilities - 4-bed intensive care and coronary care unit, laboratory, X-ray, operating room, recovery room, cystoscopic room, fracture room, obstetric room, delivery room, emergency room, respiratory therapy, physical therapy, pharmacy

Medical staff - 14 active physicians, 22 courtesy physicians, 20 registered nurses, 7 licensed practical nurses, 1 pharmacist

### Other Medical Facilities

Norvell Clinic, located in New Castle, has a staff of one doctor, two nurses, and one receptionist. Facilities include X-ray equipment and a recently upgraded routine clinical laboratory.

Campbellsburg Medical Plaza is a family practice facility with 1 medical doctor and 1 dentist.

Seven Counties Services, Henry County Center, located in New Castle, has a staff which includes a physician (part time), psychiatrist (part time), psychologist (part time), social worker, psychiatric nurse, speech therapist (part time), homebound trainer (part time), special education teacher and a teacher's aide. Services include outpatient mental health services and aftercare, a developmental training unit for preschool children with learning problems, and consultation services with the county schools.

### Ambulance Service

Name - Henry County Emergency Squad

Staff - Volunteers, fully trained in emergency medical technician and cardiopulmonary resuscitation procedures

Service - 24-hour service is provided by four squads located in Henry County

Equipment - Four ambulances equipped to meet state licensing regulations

### Public Health

Facility - Henry County Health Department

Staff - Two public health nurses, family planning specialist, health environmentalist, plumbing inspector, home health nurse, community health worker, 2 clerks

## OTHER LOCAL FACILITIES

### Communications

	<u>New Castle</u>	<u>Campbellsburg</u>
Telephone -	South Central Bell	South Central Bell
Services -	Telephone Standard	Telephone Standard
Telegraph -	Western Union	Western Union
Services -	Toll free number	Toll free number
Postal - U.S. Post Office		
Class -	Second	Third
Mail received -	Once daily	Once daily
Mail dispatched -	Once daily	Once daily
Newspapers -	Henry County Local	Patriot-Statesman
Weekly and circulation	5,300	1,453
Other papers received from -	Louisville and Eminence, Kentucky	Louisville, New Castle, Bedford, Eminence, and Carrollton, Kentucky
Radio -		
Stations received from -	Louisville, Lexington, Eminence, and Shelbyville, Kentucky; Cincinnati, Ohio	Louisville and Eminence, Kentucky; Cincinnati, Ohio
Television -		
Reception from -	Louisville and Lexington, Kentucky; Cincinnati, Ohio	Louisville and Lexington, Kentucky; Cincinnati, Ohio
Kentucky Educational Television -	Louisville transmitter- channel 68	Owenton transmitter- channel 52 Louisville transmitter- channel 68



### Library Services

Public library - Henry County Public Library - Eminence

Size collection - 37,818 volumes

Circulation, 1977-78 - 276,794

Services - Bookmobile to New Castle, Campbellsburg and 14 other communities in Henry County plus stops at 3 schools, 16 book deposit stations, and 31 houses for shut-ins; framed pictures; films and projectors; records; periodicals lending; children's story hour; summer reading and film program; photo copy machine; local authors and Kentucky history collections; library headquarters for Kentuckiana Library Development District (5-county region), interlibrary loan, community meeting room

### Religious Institutions

	<u>New Castle</u>	<u>Campbellsburg</u>
Number of churches -	8	6
Denominations -	Apostolic Pentecostal Baptist Christian Church of God Faith Temple Assembly of God Methodist	Apostolic Pentecostal Christian Methodist National Baptist Primitive Baptist Southern Baptist Catholic Church at Eminence and Carrollton
Nearest synagogues -	Louisville, 38 miles from New Castle	
Congregations -	Adath Israel (reform) Adath Jeshurun (conservative) Anshei Sfard (orthodox) Brith Sholom (reform) Keneseth Israel (orthodox)	

### Financial Institutions

<u>Banks</u>	<u>Assets</u>	<u>Deposits</u>	<u>Statement Date</u>
United Citizens Bank and Trust Company	\$30,701,971.85	\$27,025,381.71	6/30/79

### Hotels and Motels

	<u>Henry County</u>
Total number -	2
Total units -	13

## Clubs and Organizations

### Henry County

Art Club  
Beta Club  
Boy Scouts  
Chamber of Commerce  
Daughters of the American Revolution  
Democratic Women's Club  
Explorer Scouts  
4-H  
Future Business Leaders of America (FBLA)  
Future Farmers of America (FFA)  
Future Homemakers of America (FHA)  
Future Teachers of America (FTA)  
Henry County Rod and Gun Club  
Homemakers  
Independent Order of Odd Fellows  
Jaycees  
Jaycettes  
Lions  
Little Kentucky River Sportsman Club  
Little League  
Masons  
Parents-Teachers Association (PTA)  
Pony League  
Rotary  
Science Project Committee Club  
Speech Club  
Teen Democratic Club  
Women's Club

## RECREATION

### Local

A public park in New Castle contains a tennis court and baseball diamond, where Little League ball is played in the summer. Slightly south of the city is located the Henry County Fairgrounds, where the annual County Fair (usually held in August) features agricultural exhibits, rides, and special events. Facilities at a private country club located a few miles north of the city include a swimming pool and an 18-hole golf course.

Recreational facilities in Campbellsburg include a tennis court, basketball courts, and a baseball diamond located at the local elementary school. This area is now being developed into a public park.

### Area

Lake Jerico and Lake Jerico Recreation Area are located approximately 8 miles from both New Castle and Campbellsburg. Fishing and boating are favorite activities at this 136-acre lake. Private facilities are available for picnicking and tent and trailer camping.

General Butler State Resort Park is located near Carrollton, 14 miles from Campbellsburg and 20 miles from New Castle. This park features the Butler Mansion containing a museum of Ohio River lore, a resort lodge, cottages, and camping sites. Recreational facilities available at the park include a lodge pool, a sand beach at the 30-acre lake, rowboat and pedal boat rentals, fishing, hiking trails, a riding stable, tennis courts, a 9-hole golf course, picnic areas and playgrounds.

In Shelbyville, 16 miles south of New Castle and 24 miles south of Campbellsburg, the Wakefield-Scearce Galleries features a fine collection of English antiques and rare and unusual silver. The well-known Science Hill Inn is located under the same roof. Additionally, the 325-acre Guist Creek Lake, which offers facilities for fishing, boating, picnicking and camping, is only 4 miles east of Shelbyville.

The Ohio and Kentucky Rivers, located within 20 miles of New Castle and Campbellsburg, are popular sites for boating and fishing.

(Contd.)

Louisville, 38 miles from New Castle and Campbellsburg, offers a wide variety of recreational, sporting, and cultural events. Most notable is the running of the Kentucky Derby. The most prestigious thoroughbred horse race in America is held at historic Churchill Downs the first Saturday in May. The Kentucky Derby was modeled after the Epsom Derby (Darby) held at Epsom Downs in Surrey County, England. Other famous Louisville attractions are the renowned sternwheeler Belle of Louisville, (the Belle vies for honors in the Great Steamboat Race held annually during the Derby Festival), the Kentucky Derby Museum, the Louisville Zoological Gardens, the Museum of Natural History and Science, and the J. B. Speed Art Museum. Seasonal performances of the arts are presented by Actors Theatre, the Louisville Ballet Company, the Kentucky Opera Association, the Louisville Bach Society, the Louisville Orchestra, and Shakespeare-in-the-Park.



## COMMUNITY IMPROVEMENTS

### New Castle

Construction is scheduled to begin in 1980 on a project to upgrade and expand the New Castle Sewerage System. The \$1.2 million project will include construction of a new 1,000,000 gallon per day treatment plant with primary and secondary treatment. A new trunk line will be built and existing lines will be rehabilitated.

A \$67,000, fully equipped fire engine, is scheduled for delivery in 1980.

Remodeling of the Henry County Courthouse continues. The building has been placed on the National Register of Historic Places.

### Campbellsburg

Installation of sewer lines throughout the city has been completed.

The Campbellsburg Medical Plaza, a family practice center, has now opened. Medical personnel include one doctor, one dentist, and support staff.

A new subdivision has been developed near the city with homes for moderate income families. Homes for low and moderate income families will be added to an existing subdivision.