

1989

# Industrial Resources: Knox County - Barbourville

Kentucky Library Research Collections  
Western Kentucky University, [spcol@wku.edu](mailto:spcol@wku.edu)

Follow this and additional works at: [https://digitalcommons.wku.edu/knox\\_cty](https://digitalcommons.wku.edu/knox_cty)

 Part of the [Business Administration, Management, and Operations Commons](#), [Growth and Development Commons](#), and the [Infrastructure Commons](#)

---

## Recommended Citation

Kentucky Library Research Collections, "Industrial Resources: Knox County - Barbourville" (1989). *Knox County*. Paper 5.  
[https://digitalcommons.wku.edu/knox\\_cty/5](https://digitalcommons.wku.edu/knox_cty/5)

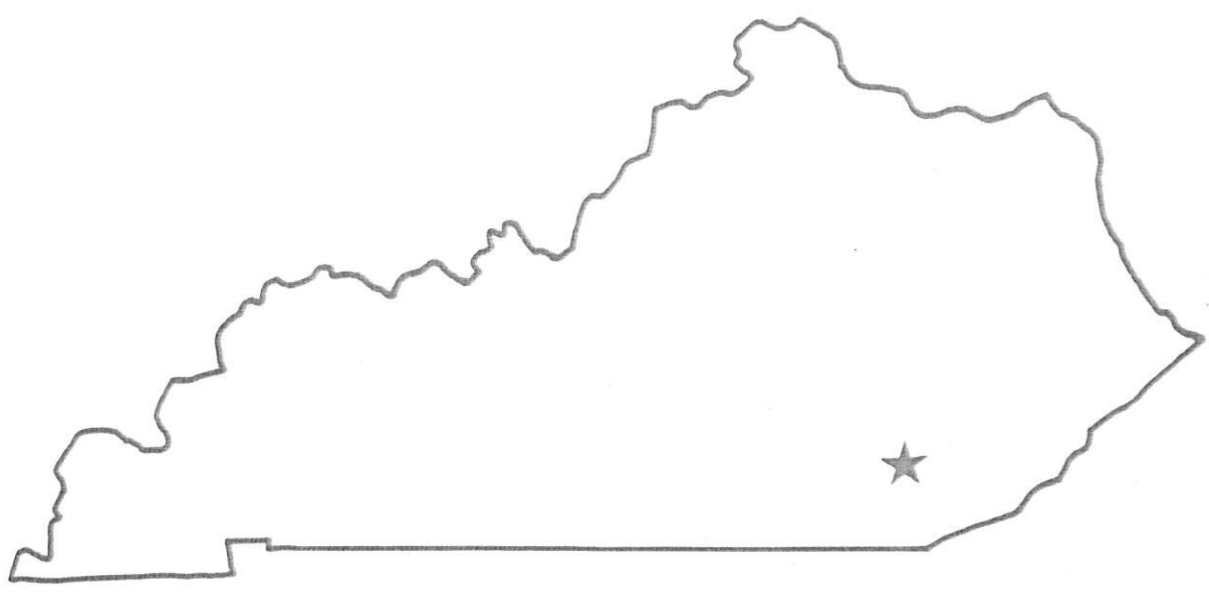
This Report is brought to you for free and open access by TopSCHOLAR®. It has been accepted for inclusion in Knox County by an authorized administrator of TopSCHOLAR®. For more information, please contact [topscholar@wku.edu](mailto:topscholar@wku.edu).

Lt. 188  
Knox County

**RESOURCES FOR ECONOMIC DEVELOPMENT**

---

**Barbourville-  
Knox County**



---

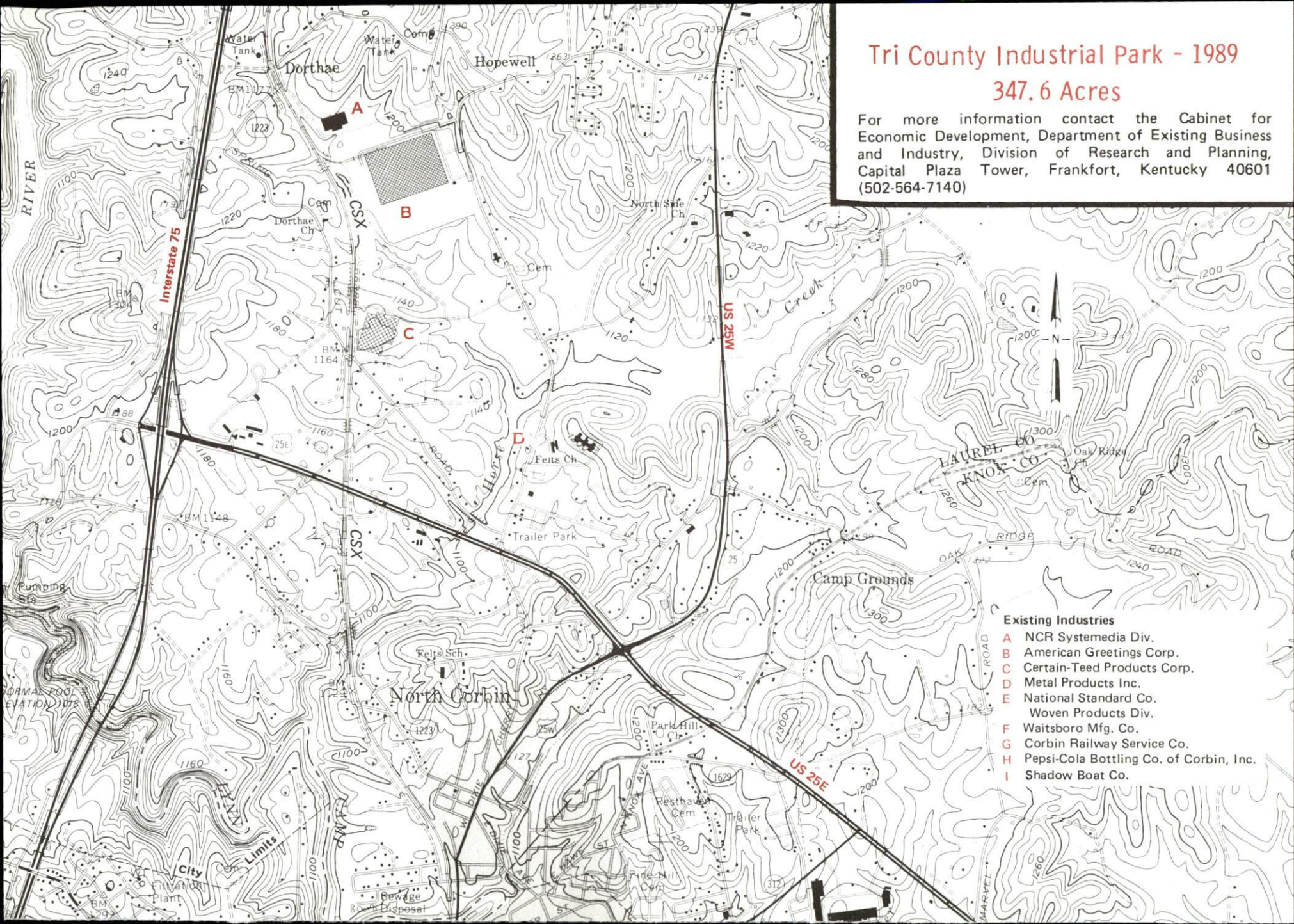
**KENTUCKY**  
Open for Business



# Tri County Industrial Park - 1989

## 347.6 Acres

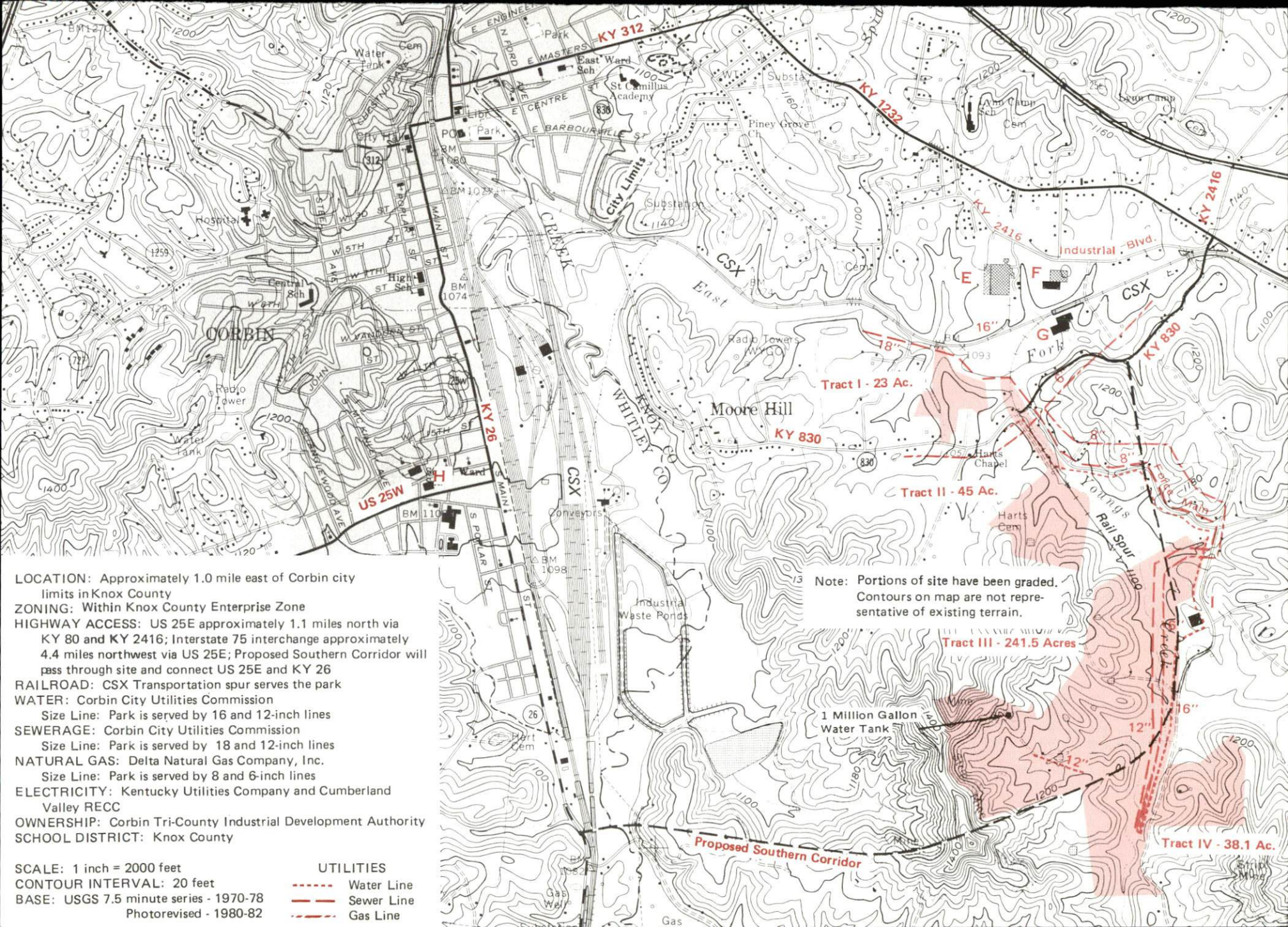
For more information contact the Cabinet for Economic Development, Department of Existing Business and Industry, Division of Research and Planning, Capital Plaza Tower, Frankfort, Kentucky 40601 (502-564-7140)



### Existing Industries

- A NCR Systemedia Div.
- B American Greetings Corp.
- C Certain-Teed Products Corp.
- D Metal Products Inc.
- E National Standard Co.
- F Woven Products Div.
- G Waitsboro Mfg. Co.
- H Corbin Railway Service Co.
- I Pepsi-Cola Bottling Co. of Corbin, Inc.
- I Shadow Boat Co.





**LOCATION:** Approximately 1.0 mile east of Corbin city limits in Knox County

**ZONING:** Within Knox County Enterprise Zone

**HIGHWAY ACCESS:** US 25E approximately 1.1 miles north via KY 80 and KY 2416; Interstate 75 interchange approximately 4.4 miles northwest via US 25E; Proposed Southern Corridor will pass through site and connect US 25E and KY 26

**RAILROAD:** CSX Transportation spur serves the park

**WATER:** Corbin City Utilities Commission  
 Size Line: Park is served by 16 and 12-inch lines

**SEWERAGE:** Corbin City Utilities Commission  
 Size Line: Park is served by 18 and 12-inch lines

**NATURAL GAS:** Delta Natural Gas Company, Inc.  
 Size Line: Park is served by 8 and 6-inch lines

**ELECTRICITY:** Kentucky Utilities Company and Cumberland Valley RECC

**OWNERSHIP:** Corbin Tri-County Industrial Development Authority

**SCHOOL DISTRICT:** Knox County

**SCALE:** 1 inch = 2000 feet

**CONTOUR INTERVAL:** 20 feet

**BASE:** USGS 7.5 minute series - 1970-78  
 Photorevised - 1980-82

**UTILITIES**

- Water Line
- Sewer Line
- Gas Line

Note: Portions of site have been graded. Contours on map are not representative of existing terrain.

**Tract I - 23 Ac.**

**Tract II - 45 Ac.**

**Tract III - 241.5 Acres**

**Tract IV - 38.1 Ac.**

**1 Million Gallon Water Tank**

**Proposed Southern Corridor**



RESOURCES FOR ECONOMIC DEVELOPMENT  
KNOX COUNTY-BARBOURVILLE, KENTUCKY

Prepared by  
The Kentucky Cabinet for Economic Development  
Division of Research and Planning  
in cooperation with  
The Knox County Chamber of Commerce

1989



Program manager - Andrew Dennis; research - Jerry Tolliver, Jane E. Sullivan; clerical - Bobbi Graves; graphics - Robert Owens, Pat Coleman; cartography - Site Evaluation Branch, Division of Industrial Development and Marketing. Cost of printing paid from state funds.



## TABLE OF CONTENTS

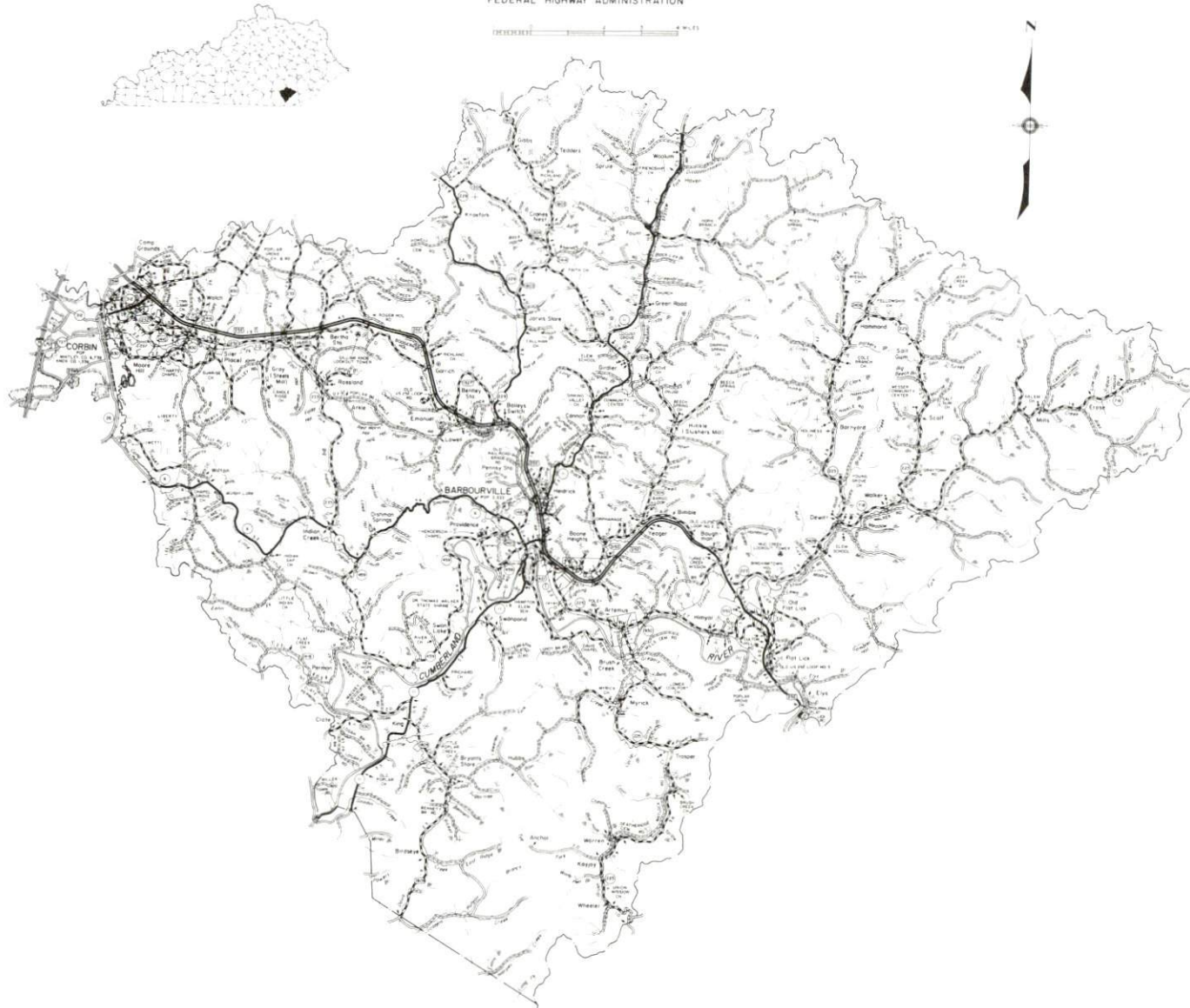
<u>Chapter</u>	<u>Page</u>
INDUSTRIAL SITES . . . . .	i
KNOX COUNTY - BARBOURVILLE, KENTUCKY - A RESOURCE PROFILE . . . . .	1
THE LABOR MARKET STATISTICS . . . . .	2
Labor Market Area Map . . . . .	2
Population . . . . .	3
Population Projections . . . . .	3
Unemployment Rates, 1980-1987 - Line Chart	4
Labor Force Characteristics of Residents, 1987	5
Selected Components of Nonagricultural Employment, by Place of Work, 1987 . . . . .	5
Estimated Male Labor Supply . . . . .	6
Estimated Female Labor Supply . . . . .	6
Average Placement Wages . . . . .	7
Per Capita Personal Income . . . . .	7
Average Weekly Wages of Workers Covered by Unemployment Insurance F. Y. 1986-87 - Bar Chart . . . . .	8
Average Weekly Wages by Industry, by Place of Work, 1987 . . . . .	9
EXISTING INDUSTRY . . . . .	10
Knox County Manufacturing Firms, Their Products and Employment . . . . .	10
Labor Organizations in Manufacturing Firms . . . . .	11
Selected Industrial Services . . . . .	11
TRANSPORTATION . . . . .	12
Rail . . . . .	12
Highways . . . . .	12
Truck Service . . . . .	12
Air . . . . .	13
Air Express Service . . . . .	14
POWER AND FUEL . . . . .	15
Electricity . . . . .	15
Natural Gas . . . . .	16
WATER AND SEWERAGE . . . . .	17
Public Water Supply . . . . .	17
Sewerage . . . . .	19



<u>Chapter</u>	<u>Page</u>
CLIMATE . . . . .	21
LOCAL GOVERNMENT . . . . .	22
Structure . . . . .	22
Planning and Zoning . . . . .	22
Local Fees and Licenses . . . . .	22
State and Local Property Taxes . . . . .	23
Combined State and Local Rates Per \$100 Valuation, 1987 . . . . .	23
Safety . . . . .	24
Police . . . . .	24
Fire . . . . .	24
Refuse Collection and Disposal . . . . .	24
EDUCATION . . . . .	25
Public Schools . . . . .	25
Nonpublic Schools . . . . .	25
Area Colleges and Universities . . . . .	26
Vocational Training . . . . .	27
HEALTH . . . . .	29
Local Medical Personnel . . . . .	29
Hospitals . . . . .	29
Other Medical Facilities . . . . .	29
Ambulance Service . . . . .	29
OTHER LOCAL FACILITIES . . . . .	30
Communications . . . . .	30
Library Services . . . . .	30
Religious Institutions . . . . .	30
Financial Institutions . . . . .	31
Hotels and Motels . . . . .	31
RECREATION . . . . .	32
COMMUNITY IMPROVEMENTS . . . . .	34

GENERAL HIGHWAY MAP  
**KNOX COUNTY**  
KENTUCKY

PREPARED BY THE  
KENTUCKY TRANSPORTATION CABINET  
DEPARTMENT OF HIGHWAYS  
DIVISION OF PLANNING  
IN COOPERATION WITH THE  
U.S. DEPARTMENT OF TRANSPORTATION  
FEDERAL HIGHWAY ADMINISTRATION





## KNOX COUNTY - BARBOURVILLE, KENTUCKY - A RESOURCE PROFILE

Barbourville, the county seat of Knox County, is located in the historic Cumberland Gap area of southeastern Kentucky. Barbourville, with a 1986 estimated population of 2,970, is located 102 miles southeast of Lexington, Kentucky; 103 miles north of Knoxville, Tennessee; and 174 miles southeast of Louisville, Kentucky.

A section of Knox County recently received enterprise zone status. Knox County has a land area of 388 square miles and the Cumberland River runs through the south-central portion of the county. Knox County had a 1987 estimated population of 29,900.

**The Economic Framework** - The total number of Knox County residents employed in 1987 averaged 9,234. Manufacturing firms in the county reported 1,088 employees; wholesale and retail trade provided 1,429 jobs; 916 people were employed in service occupations; state and local government accounted for 1,126 employees; and contract construction firms provided 149 jobs.

**Labor Supply** - There is a current estimated labor supply of 18,115 men and 18,438 women available for industrial jobs in the labor market area. In addition, from 1989 through 1993, 7,501 young men and 6,767 young women in the area will become 18 years of age and potentially available for industrial jobs.

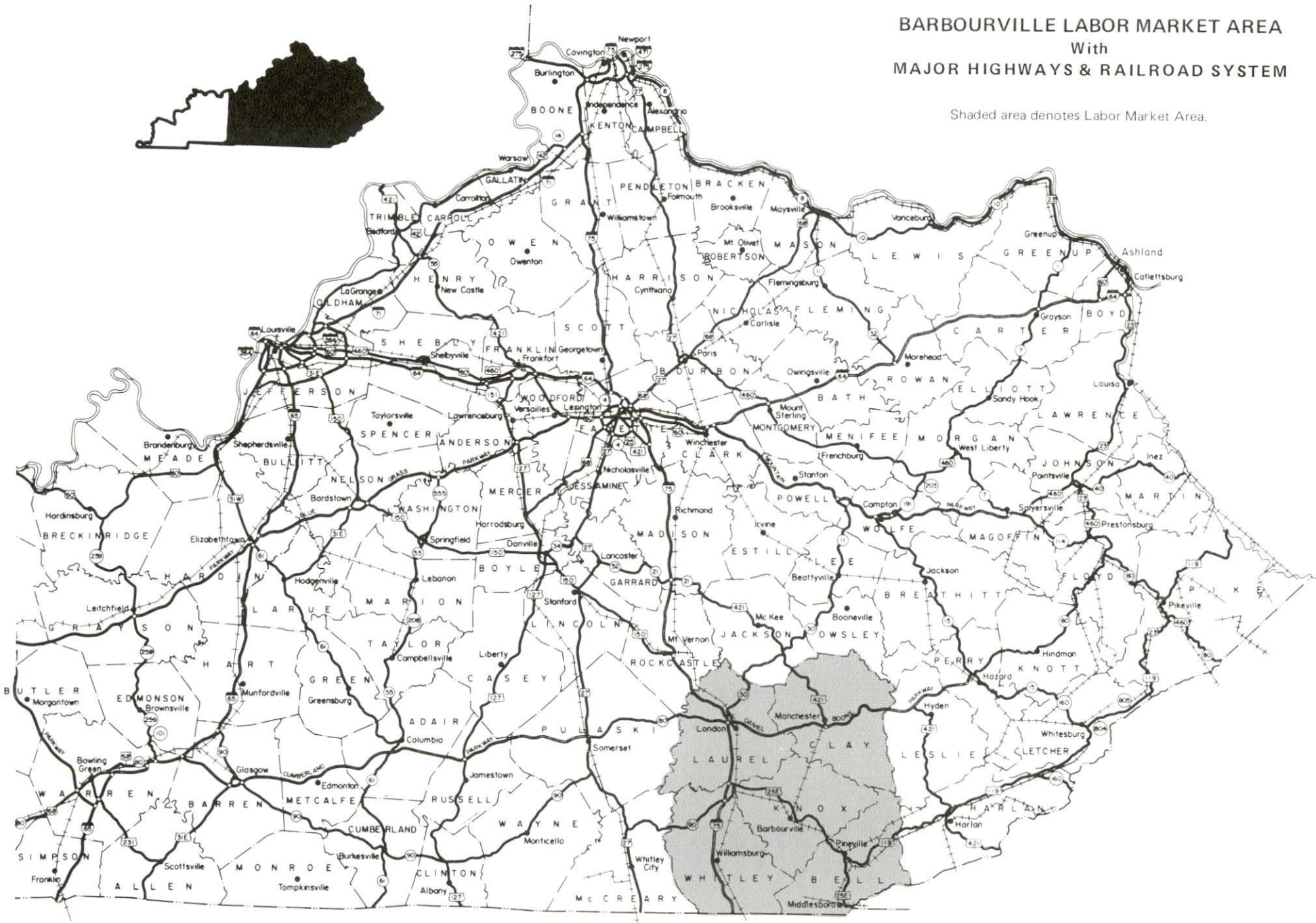
**Transportation** - Main line rail service is provided to Barbourville by CSX Transportation. Barbourville is served directly by U.S. 25E and Kentucky Highways 11 and 6. I-75 is located 17 miles northwest, while the Daniel Boone Parkway is 24 miles north. Eleven trucking companies serve Barbourville with interstate and/or intrastate service. The London-Corbin Airport, 25 miles northwest of Barbourville, has one paved 6,000-foot runway. The nearest scheduled commercial airline service is the Bluegrass Airport, 4 miles west of Lexington, 107 miles northwest of Barbourville.

**Power and Fuel** - Electric power is provided to Barbourville and parts of Knox County by the Barbourville Water and Electric Company, which is supplied by the Kentucky Utilities Company. Knox County is also provided electric power by the Cumberland Valley RECC, which is supplied by East Kentucky Power Cooperative and Kentucky Utilities Company, an electric generation transmission company. Natural gas is provided to Barbourville by Delta Natural Gas Company, which is supplied by Wiser Oil Company and Columbia Gas Transmission Corporation.

**Education** - Primary and secondary education is provided to Barbourville and Knox County by the Barbourville Independent School System and the Knox County School System. One nonpublic school operates in Barbourville. Union College, a four-year college, is located in Barbourville. Vocational training is available at Knox County Area Vocational Education Center in Barbourville and at Laurel County State Vocational-Technical School, in London, 28 miles northwest.

**BARBOURVILLE LABOR MARKET AREA**  
With  
**MAJOR HIGHWAYS & RAILROAD SYSTEM**

Shaded area denotes Labor Market Area.





## LABOR MARKET STATISTICS

The Barbourville Labor Market Area includes Knox County and the adjoining Kentucky counties of Bell, Clay, Laurel, and Whitley.

### POPULATION

<u>Area</u>	<u>1987*</u>	<u>1980</u>	<u>1970</u>	<u>Percent Nonwhite</u> <u>1980</u>
Barbourville	2,970	3,333	3,549	3.7
Labor Market Area	166,100	159,699	124,822	-
Knox County	29,900	30,239	23,689	1.3
Bell County	33,600	34,330	31,121	2.8
Clay County	23,700	22,752	18,481	1.7
Laurel County	43,300	38,982	27,386	1.0
Whitley County	35,600	33,396	24,145	0.9

\* Population estimates. City estimates are for 1986.

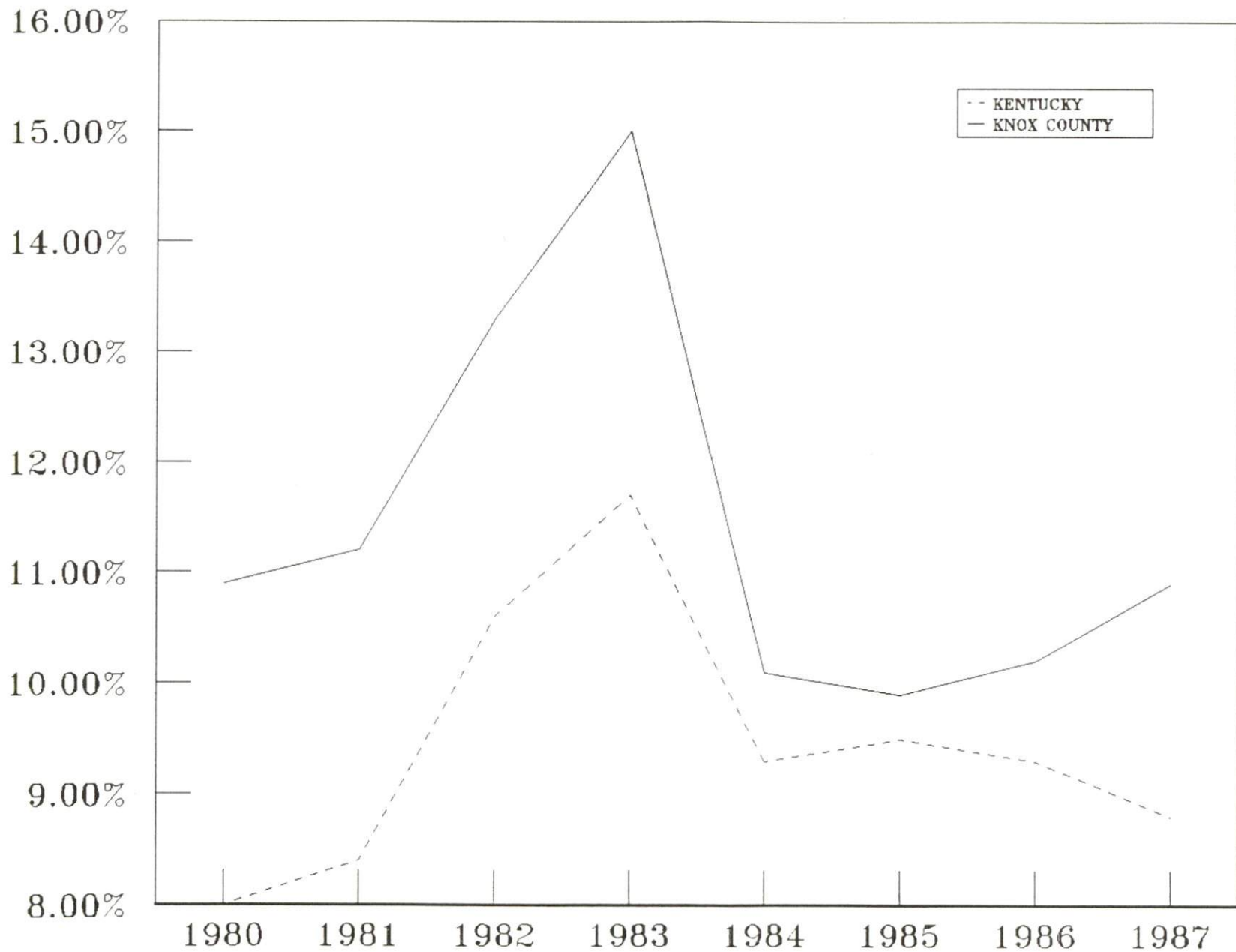
Sources: U.S. Department of Commerce, Bureau of the Census, October 1988; University of Louisville, Urban Studies Center, Population Unit.

### POPULATION PROJECTIONS

<u>Area</u>	<u>1990</u>	<u>1995</u>	<u>2000</u>	<u>2010</u>
Labor Market Area	175,179	185,213	193,836	208,086
Knox County	31,469	32,949	34,256	36,329
Bell County	34,924	35,501	36,045	36,660
Clay County	25,133	26,648	27,998	30,252
Laurel County	45,870	49,749	53,023	58,680
Whitley County	37,783	40,366	42,514	46,165

Source: University of Louisville, Urban Studies Center, State Data Center.

# UNEMPLOYMENT RATES





**LABOR FORCE CHARACTERISTICS OF RESIDENTS, 1987**

	<u>Knox County</u>	<u>Labor Market Area</u>
Civilian Labor Force	10,368	56,879
Employment	9,234	50,006
Unemployment	1,134	6,873
Rate of Unemployment (%)	10.9	12.1

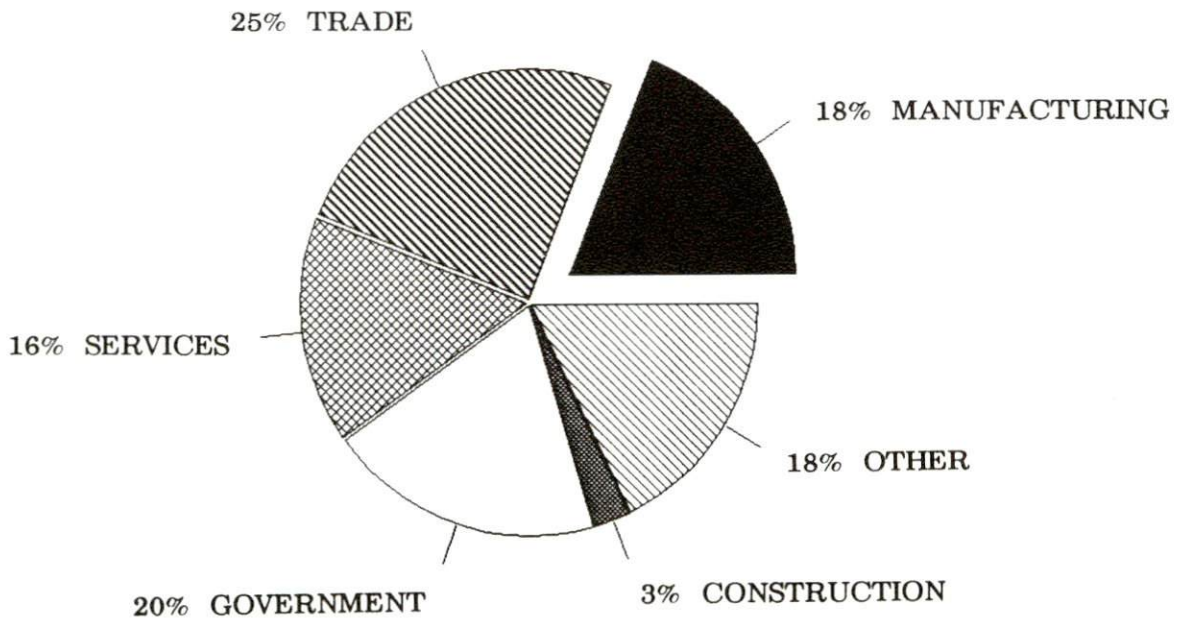
Source: Kentucky Cabinet for Human Resources, Kentucky Labor Force Estimates, Annual Averages, 1987.

**SELECTED COMPONENTS OF NONAGRICULTURAL EMPLOYMENT  
BY PLACE OF WORK, 1987**

	<u>Knox County</u>	<u>Labor Market Area</u>
All Industries (total)	5,738	42,303
Manufacturing	1,088	7,011
Wholesale & Retail Trade	1,429	11,284
Services	916	7,629
State/Local Government	1,126	6,287
Contract Construction	149	1,898

Note: Excludes domestic workers, railway workers, certain nonprofit corporations, majority of federal government workers, and self-employed workers.  
Source: Kentucky Cabinet for Human Resources, Average Monthly Workers Covered by Kentucky Unemployment Insurance Law, 1987.

**KNOX COUNTY**



ESTIMATED MALE LABOR SUPPLY  
BARBOURVILLE LABOR MARKET AREA

Area	Current				Future
	Total Male	Unemployed	Under-employed	Not in Labor Force	Becoming 18 years of age 1989 thru 1993
Labor Market Area*	18,115	4,285	3,649	10,181	7,501
Knox	3,003	665	580	1,758	1,452
Bell	3,969	1,031	701	2,237	1,634
Clay	3,540	617	482	2,441	1,161
Laurel	2,983	1,076	970	937	1,803
Whitley	4,620	896	916	2,808	1,451

ESTIMATED FEMALE LABOR SUPPLY  
BARBOURVILLE LABOR MARKET AREA

Area	Current				Future
	Total Female	Unemployed	Under-employed	Not in Labor Force	Becoming 18 years of age 1989 thru 1993
Labor Market Area*	18,438	2,588	3,148	12,702	6,767
Knox	3,243	469	520	2,254	1,374
Bell	4,199	450	479	3,270	1,489
Clay	2,942	294	385	2,263	1,029
Laurel	3,760	817	881	2,062	1,564
Whitley	4,294	558	883	2,853	1,311

\* Additional workers may be drawn from other nearby counties.

**Note:** Unemployed - persons unemployed and actively seeking work; Underemployed - persons employed but working only 14 to 26 weeks per year; Not in Labor Force - represents the number of persons who would enter the labor force if suitable employment were available (based on the assumption that persons in Kentucky would like to participate in the labor force in the same proportion that they do nationally).

**Sources:** Kentucky Cabinet for Human Resources, Kentucky Labor Supply Estimates by County, 1987. Kentucky Department of Business Development, Future Labor Supply Becoming 18 Years of Age, 1989 thru 1993.

## AVERAGE PLACEMENT WAGES

Knox County is served by the Corbin local office of the Kentucky Department for Employment Services. The focus of the following data is on job placements made by the Corbin local office and may therefore be used as an indicator of the wages which employers in the area pay new employees. During the twelve months which ended on June 30, 1988, the local employment office filled 2,710 job openings in various occupational categories. The average hourly wage for selected occupational categories were:

<u>OCCUPATIONAL CATEGORY</u>	<u>NUMBER OF PLACEMENTS</u>	<u>AVERAGE WAGE(\$)</u>
All Occupations	2,710	3.75
Clerical	823	3.47
Sales	123	3.91
Services (excluding domestic)	749	3.38
Agricultural, Fishery, Forestry, etc.	12	4.10
Processing	28	3.38
Machine Trades	98	5.98
Bench Work	448	3.58
Structural	130	4.52
Motor Freight/ Transportation	61	4.67
Packaging and Materials Handling	159	4.96
Other	5	5.18

The Corbin local office also serves Clay, Jackson, Laurel, Rockcastle, and Whitley Counties. The above occupational categories are taken from the Dictionary of Occupational Titles published by the U.S. Department of Labor.

Source: Kentucky Cabinet for Human Resources, Department for Employment Services.

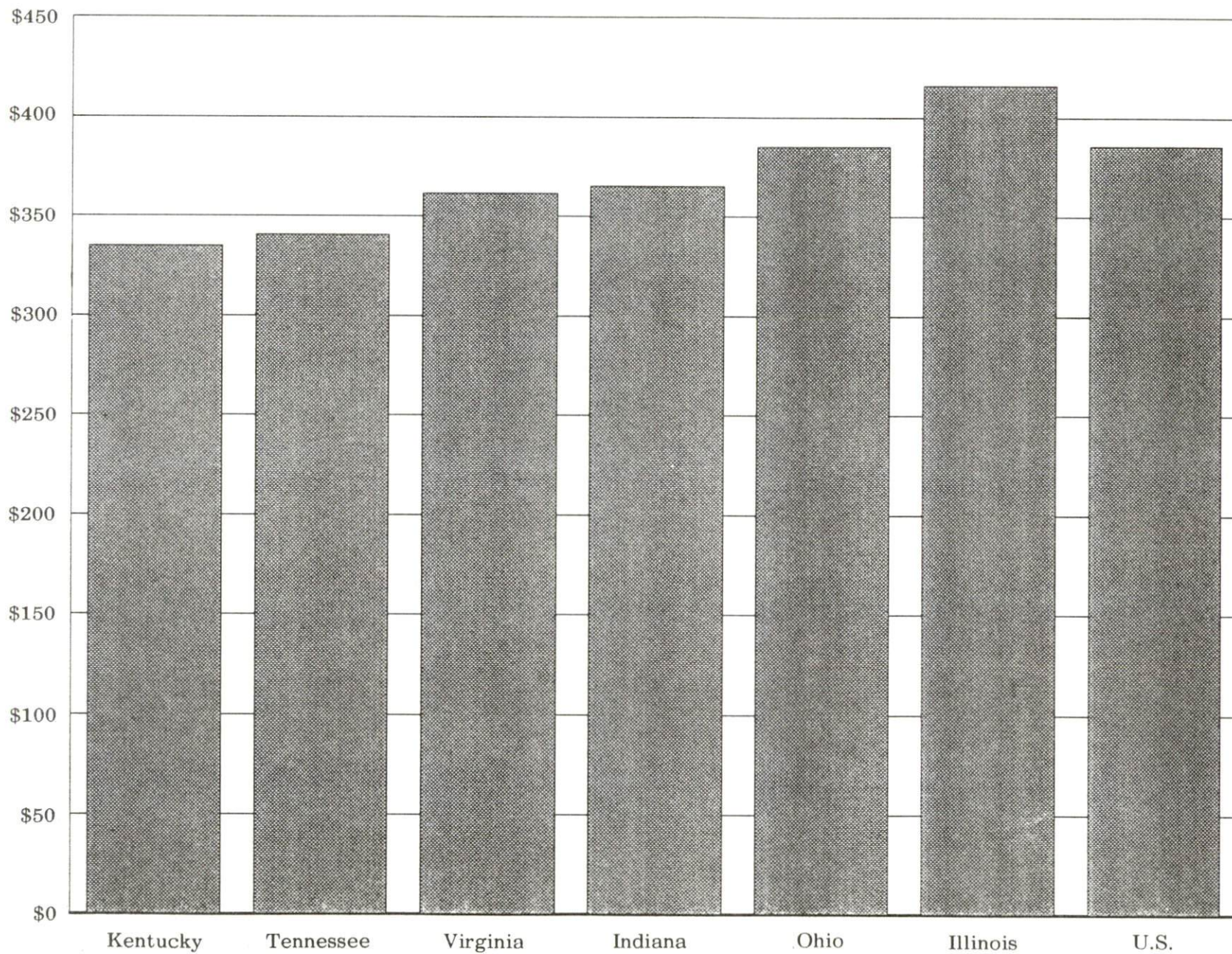
### PER CAPITA PERSONAL INCOME

<u>Area</u>	<u>1982</u>	<u>1986</u>	<u>Percent Change</u>
Knox County	\$6,087	\$7,444	22.3
Labor Market Area Range	\$6,087 - 7,649	\$7,302 - 9,406	-
Kentucky	\$9,277	\$11,268	21.5
U.S.	\$11,480	\$14,606	27.2

Sources: Kentucky Economic Information System, April 1988 and August 1988.



AVERAGE WEEKLY WAGES OF WORKERS COVERED BY  
UNEMPLOYMENT INSURANCE F. Y. 1986-87





AVERAGE WEEKLY WAGES BY INDUSTRY  
BY PLACE OF WORK, 1987

	<u>Knox County</u>	<u>Bell County</u>	<u>Clay County</u>
All Industries	\$271.79	\$324.86	\$387.16
Mining & Quarrying	331.70	548.74	601.58
Contract Construction	308.01	355.01	155.16
Manufacturing	341.09	290.86	261.15
Transportation, Communications & Public Utilities	371.41	390.17	363.71
Wholesale & Retail Trade	205.22	198.88	214.82
Finance, Insurance & Real Estate	269.29	333.21	270.04
Services	211.37	296.35	235.59
State/Local Government	284.61	330.04	308.36
Other	*	228.41	*
	<u>Laurel County</u>	<u>Whitley County</u>	
All Industries	\$308.79	\$278.95	
Mining & Quarrying	509.86	479.96	
Contract Construction	469.32	275.70	
Manufacturing	339.86	280.54	
Transportation, Communications & Public Utilities	402.04	288.40	
Wholesale & Retail Trade	234.39	224.51	
Finance, Insurance & Real Estate	294.73	272.86	
Services	243.15	271.27	
State/Local Government	335.23	292.70	
Other	194.56	241.18	

\* Not disclosed.

Note: The average weekly wage for each category includes the salaries and wages of all persons working for that type business. For example, the manufacturing category includes both production workers and administrative personnel. Excludes domestic workers, railway workers, certain nonprofit corporations, majority of federal government workers, and self-employed workers.

Source: Kentucky Cabinet for Human Resources, Average Weekly Wages of Workers Covered by Kentucky Unemployment Insurance Law, 1987.

## EXISTING INDUSTRY

### KNOX COUNTY MANUFACTURING FIRMS, THEIR PRODUCTS AND EMPLOYMENT

Firm (Establishment date)	Product	1988 Average Employment
Advocate Publishing Company (1938)	Newspaper, commercial printing	16
Corbin Railway Service Company (1984)	Rail car repair	43
Elliott Lumber Company (1982)	Lumber	9
Forest Products, Inc. (1966)	Lumber, wood chips, wood pallets, skids	128
Manufacturer's Services Corporation, Inc. (1986)	Food service equipment, commercial & institu- tional	200
National Standard Com- pany, Woven Products Division (1962)	Low carbon steel wire, micronic metal fibers & fiber products, industrial wire cloth	238
Shadow, Inc. (1987)	Fiberglas boats	35
Tremco, Inc. (1973)	Industrial sealants	150
Waitsboro Manufacturing Company (1982)	Fiberglas boats	86
Warners Warnaco, Inc. (1966)	Brassieres, girdles	184
E.K. Wood Products Company (1962)	Furniture dimension, custom kiln drying, kitchen cabinet parts	90

**Sources:** Kentucky Department of Business Development, 1988 Kentucky Directory of Manufacturers; Division of Research and Planning.



## LABOR ORGANIZATIONS IN MANUFACTURING FIRMS

<u>Union</u>	<u>Representing workers at:</u>
United Steelworkers of America, AFL-CIO	National Standard Company; Tremco, Inc.
International Brotherhood of Teamsters, Chauffeurs, Warehousemen and Helpers of America	E.K. Wood Products Company

## SELECTED INDUSTRIAL SERVICES

<u>Types of Service</u>	<u>Location</u>	<u>Mileage from Barbourville</u>
Custom Data Processing	Middlesboro, Kentucky	31
Custom Plastics Producers	Middlesboro, Kentucky	31
Electric Motor Repair	Corbin, Kentucky	16
Grinding, Precision & Tool	Richmond, Kentucky	78
Heat Treating Facilities	Richmond, Kentucky	78
Industrial Equipment & Supplies	Richmond, Kentucky	78
Industrial Gases	Corbin, Kentucky	16
Industrial Waste Removal	Somerset, Kentucky	60
Machine Shops, Tool & Die	Corbin, Kentucky	16
Metal Castings	Middlesboro, Kentucky	31
Metal Finishers	Richmond, Kentucky	78
Metal Service Centers	Richmond, Kentucky	78
Millwrights	Lexington, Kentucky	102
	Knoxville, Tennessee	103
Public Warehouse Facilities	Lexington, Kentucky	102

Sources: Kentucky Department of Business Development, Kentucky Directory of Selected Industrial Services, 1987; Division of Research and Planning.

## TRANSPORTATION

### Rail

Line serving Barbourville - CSX Transportation

Services - Main line; nearest CSX Transportation piggyback facilities are available in Knoxville, Tennessee, 103 miles south

For details on routing, schedules, rates, and services contact:

Manager  
Industrial Development  
CSX Transportation  
908 West Broadway  
P. O. Box 2157  
Louisville, Kentucky 40201  
(502) 587-7746

### Highways

Barbourville is served directly by U.S. 25E, a four-lane "AAA"-rated (80,000-pound gross load limit) trucking highway, and Kentucky Highways 11 and 6, both "AA"-rated (62,000-pound gross load limit) trucking highways. Interstate 75 is 17 miles northwest of Barbourville via U.S. 25E, while the Daniel Boone Parkway is 24 miles north via Kentucky 11.

Two highway projects, which will affect Barbourville and will provide four-lane access to the state of Tennessee via U.S. 25E, include: construction of a four-lane highway through Pineville and construction of the Cumberland Gap Tunnel. The four-lane highway will be completed in 1989, while the tunnel will be completed in 1992.

### Truck Service

ANR Freight System, Inc.\*  
American Freight System, Inc.\*  
Averitt Express, Inc.\*\*  
Bailey's Express, Inc.\*\*  
Consolidated Freightways  
Corporation of Delaware\*\*

Humboldt Express, Inc.\*\*  
Manning Motor Express, Inc.\*\*  
Middlewest Freightways, Inc.\*\*  
Overnite Transportation Company\*\*  
Skyline Transportation, Inc.\*\*  
Yellow Freight Systems, Inc.\*\*

\* Interstate service only.

\*\* Interstate and intrastate service.

Source: American Motor Carrier Directory, Fall 1988.

HIGHWAY MILES AND TRUCK TRANSIT TIME IN DAYS FROM  
BARBOURVILLE, KENTUCKY, TO SELECTED MARKET CENTERS

City	Highway Miles	Delivery		City	Highway Miles	Delivery	
		Time TL				Time TL	
Atlanta, GA	296	1		Los Angeles, CA	2,282	6	
Baltimore MD	643	2		Louisville, KY	174	1	
Birmingham, AL	357	1		Nashville, TN	221	1	
Chicago, IL	454	1		New Orleans, LA	699	2	
Cincinnati, OH	180	1		New York, NY	805	1	
Cleveland, OH	419	1		Pittsburgh, PA	445	1	
Detroit, MI	439	1		St. Louis, MO	437	1	
Knoxville, TN	103	1					

Note: Mileage computations are via the best interstate or primary highways, not necessarily the most direct route of travel.

Sources: Rand McNally Deluxe Motor Carriers' Road Atlas, 1987. Official Kentucky Mileage Map, 1980. Delivery time - Overnite Transportation Company, East Bernstadt, Kentucky 40729.

Air

Local

Location: London-Corbin Airport (Magee Field)  
3 miles south-southeast of London, Kentucky;  
25 miles northwest of Barbourville

Runways: 1 paved

Length: 6,000 feet

Traffic Control: Wind sock and FSS advisory service on 123.6

Lighting: Beacon, runway and obstruction lights, REIL, VASI

Services: Fuel - 100 octane and jet-A; minor A & P repairs; tie-downs; aircraft rental, weather, flight training, charter and ambulance service, vending machines, taxi, car rentals

Air Freight Service: Air carriers accept air freight on a space available basis



### Nearest Scheduled Commercial Airline Service

Location: Bluegrass Airport  
4 miles west of Lexington, Kentucky;  
107 miles northwest of Barbourville

Runways: 2 paved  
Length: 7,000 feet; 3,500 feet

Traffic Control: Control tower

Lighting: Approach lighting system, beacon, runways and  
obstructions lighted, VASI

Services: Delta, Piedmont, USAir, Allegheny Commuter, TWA,  
Jetstream United Express, Eastern Metro, Comair,  
American Eagle; fuel - 100LL and jet-A; hangars,  
tie-downs; major A & P repairs; major Avionics  
repairs; APU, charter, flight instruction, oxygen,  
plane rentals, survival equipment; taxi,  
limousine, car rentals, courtesy car, weather  
information; restaurant, snack bar

Air Freight Service: Air freight terminal

### **Air Express Service**

Several major companies offer air express services in Kentucky. These companies provide a quick means of shipping small to medium-sized packages expeditiously.

## POWER AND FUEL

### Electricity

Company serving Barbourville and the central portion of Knox County -  
Barbourville Water and Electric Company  
Source of power - Kentucky Utilities Company  
For industrial rates contact:

Barbourville Water and Electric Company  
P. O. Box 651  
Barbourville, Kentucky 40906  
(606) 546-3187

and/or

Industrial Development Department  
Kentucky Utilities Company  
One Quality Street  
Lexington, Kentucky 40507  
(606) 255-1461

Company serving a major portion of Knox County - Cumberland Valley Rural  
Electric Cooperative Corporation  
Source of power - East Kentucky Power Cooperative  
For industrial rates contact:

Industrial Development Division  
East Kentucky Power Cooperative  
P. O. Box 707  
Winchester, Kentucky 40391  
(606) 744-4812

and/or

Cumberland Valley RECC  
Highway 25E  
Gray, Kentucky 40734  
(606) 528-2677

Company serving portions of Knox County - Kentucky Utilities Company  
Source of power - Kentucky Utilities Company  
For industrial rates contact:

Industrial Development Department  
Kentucky Utilities Company  
One Quality Street  
Lexington, Kentucky 40507  
(606) 255-1461

## Natural Gas

Company serving Barbourville - Delta Natural Gas Company  
Source of supply - Wiser Oil Company and Columbia Gas Transmission Corporation  
Size of transmission mains - 8-inch (supplier); 8-inch (distributor)  
Distribution mains - 2 to 6 inches  
Distribution pressure - 12 to 30 psi  
Btu content - 1,075 per cubic foot  
Specific gravity - 0.65  
For rates and supplies contact:

Manager of Marketing and Public Relations  
Delta Natural Gas Company  
Route 1, Box 30A  
Winchester, Kentucky 40391  
(606) 744-6171



## WATER AND SEWERAGE

### Public Water Supply

Company serving Barbourville - Barbourville Water and Electric Company\*  
P. O. Box 651  
Barbourville, Kentucky 40906  
(606) 546-3187

Source - Cumberland River and Laurel Lake  
Treatment plant capacity - 1,500,000 million gallons per day  
Average daily consumption - 1,000,000 million gallons  
Peak daily consumption - 1,250,000 million gallons  
Treatment processes - Sedimentation, chlorination, rapid mix,  
floculation, filtration, fluoridation, coagulation  
Storage capacity - 2,650,000 gallons  
Size lines - 4 to 12 inches  
Water pressure - 30 to 90 psi

### MONTHLY WATER RATES

#### Inside city

First	1,000 gallons	\$5.00 (Minimum)
All over	1,000 gallons	1.50 per M gallons

#### Outside city

First	1,000 gallons	\$7.50 (Minimum)
All over	1,000 gallons	2.00 per M gallons

#### Tap-on charge:

3/4-inch meter -	\$ 300
1-inch meter -	600
2-inch meter -	1,200

\* A \$6.8 million expansion by the Barbourville Water and Electric Company was recently completed. An 18-inch raw water line was laid from Barbourville to Laurel Lake. The 26-mile water line will serve as a second source of supply. Also included in the project was the extension of service to the community of Grays. Raw water intake can supply 4 million gallons per day to match a planned new water treatment plant of 4 million gallons per day. The new plant will cost approximately \$4 million. No construction date is scheduled at this time.

Company serving Tri-County Industrial Park -

City Utilities Commission  
901 South Main Street  
Corbin, Kentucky 40701  
(606) 528-4026

Source - Laurel Lake Impoundment

Treatment plant capacity - 5,000,000 gallons per day

Average daily consumption - 2,470,000 gallons

Peak daily consumption - 4,000,000 gallons

Treatment processes - Aeration, rapid mix, flocculation, sedimentation,  
filtration, chlorination, fluoridation

Storage capacity - 4,850,000 gallons, including clear well

Size lines - 2 to 16 inches (Industrial park is served by 12- and 16-  
inch lines)

Water pressure - 30 psi to 110 psi

MONTHLY WATER RATES

Inside city

Monthly service charge	\$2.00
First 10,000 gallons	1.05 per M gallons
Next 290,000 gallons	1.00 per M gallons
Over 300,000 gallons	.71 per M gallons
Minimum bill	3.05

Outside city

Monthly service charge	\$4.00
First 10,000 gallons	1.57 per M gallons
Next 290,000 gallons	1.50 per M gallons
Over 300,000 gallons	1.06 per M gallons
Minimum bill	5.57

Tap-on charge:

Inside City

3/4-inch tap	\$ 150
1-inch tap	250
2-inch tap	650
4-inch tap	2,750
6-inch tap	5,000
Over 6-inch	By contract

(Continued)

Outside city

3/4-inch tap	\$ 325
1-inch tap	545
2-inch tap	975
4-inch tap	4,125
6-inch tap	7,500
Over 6-inch	By contract

Sewerage

Company serving Barbourville - Barbourville Water and Electric Company  
P. O. Box 651  
Barbourville, Kentucky 40906  
(606) 546-3187

Design capacity - 1,000,000 gallons per day  
Average daily flow - 500,000 gallons  
Type of treatment - Tertiary  
Treatment processes - Lagoon system, extended aeration  
Treated effluent discharged into - Cumberland River  
Size of sanitary mains - 8 to 12 inches  
Monthly rates - 75 percent of monthly water bill (outside city limits,  
100% of water bill)

Tap-on charge:

Residential - \$300  
Small Commercial - \$600  
Large Commercial - \$1,200

Company serving Tri-County Industrial Park -

City Utilities Commission  
901 South Main Street  
Corbin, Kentucky 40701  
(606) 528-4026

Design capacity - 4,500,000 gallons per day  
Average daily flow - 2,400,000 gallons  
Type of treatment - Primary and secondary  
Treatment processes - Screening, grit removal, oxidation ditch,  
extended aeration, activated sludge, chlorination, sludge  
drying beds  
Treated effluent discharged into - Lynn Camp Creek  
Size of sanitary mains - 4 to 24 inches (Industrial park is served by  
12- and 18-inch lines)

(Continued)



## SEWER RATES

### Inside city (residential and commercial service)

Monthly service charge	\$2.15	
First 10,000 gallons	1.38	per M gallons
Over 10,000 gallons	.74	per M gallons
Minimum bill	3.53	

### Inside city (industrial service)

Monthly service charge	\$50.00	
First 10,000 gallons	1.38	per M gallons
Over 10,000 gallons	.74	per M gallons
Minimum bill	50.00	

Excess BOD charge (over 250 mg per liter)	\$0.10	per pound
Excess suspended solids charge (over 300 mg per liter)	0.036	per pound
Excess ammonia charge (over 20 mg per liter)	0.30	per pound

### Outside city (residential and commercial service)

Monthly service charge	\$3.25	
First 10,000 gallons	2.07	per M gallons
Over 10,000 gallons	1.11	per M gallons
Minimum bill	5.32	

### Outside city (industrial service)

Monthly service charge	\$50.00	
First 10,000 gallons	2.07	
Over 10,000 gallons	1.11	per M gallons
Minimum bill	50.00	

Excess BOD charge (over 250 mg per liter)	\$0.15	per pound
Excess suspended solids charge (over 300 mg per liter)	0.054	per pound
Excess ammonia charge (over 20 mg per liter)	0.30	per pound

### Tap-on charge:

Residential - \$300  
Commercial and Industrial - By contract

## CLIMATE

### Knox County

#### Temperature

Normal (30-year record)	58.90 degrees
Average annual 1987	58.70 degrees
Record highest, September 1954 (46-year record)	103.00 degrees
Record lowest, January 1985 (46-year record)	-24.00 degrees
Normal heating degree days (30-year record) (Heating degree day totals are the sums of negative departures of average daily temperatures from 65 degrees F.)	3,658

#### Precipitation

Normal (30-year record)	47.29 inches
Mean annual snowfall (45-year record)	12.60 inches
Total precipitation 1987	34.66 inches
Mean number days precipitation (.01 inch or more) (45-year record)	126.40
Mean number days thunderstorms (45-year record)	47.00

#### Prevailing winds (through 1963)

Northeast

#### Relative Humidity (27-year record)

1 a.m.	80 percent
7 a.m.	85 percent
1 p.m.	59 percent
7 p.m.	63 percent

Source: U.S. Department of Commerce, Environmental Science Services Administration, Climatological Data, 1987. Station of record: Knoxville, Tennessee.

## LOCAL GOVERNMENT

### Structure

Barbourville is served by a mayor and six council members. Knox County is served by a county judge/executive and three commissioners.

### Planning and Zoning

City agency - Barbourville Planning and Zoning Commission

Zoning enforced - Within city only

Subdivision regulations enforced - Within city only

Local codes enforced - Building and housing

Mandatory state codes enforced - Kentucky Plumbing code, National Electric Code, Kentucky Boiler Regulations and Standards, Kentucky Building Code (modeled after BOCA code)

### Local Fees and Licenses

A 3 percent tax is levied on utilities receipts for schools in the Barbourville Independent School District. Tax is paid by all consumers of utilities as an add-on to the utilities bills. Exempted are receipts from utilities services that are resold and the receipts from the sale of energy or energy producing fuels that exceed 3 percent of the cost of production in manufacturing, processing, mining or refining.



## State and Local Property Taxes

All property in Kentucky, except items exempted by the state constitution, is taxed by the state. Property which also may be taxed by local jurisdictions includes land and buildings, finished goods inventories, automobiles, trucks, office furniture and office equipment. Local taxing jurisdictions in Kentucky include counties, cities, and school districts.

All property in Kentucky is assessed at 100 percent of fair cash value.

### COMBINED STATE AND LOCAL RATES PER \$100 VALUATION, 1988

	Barbourville & Barbourville Independent School District	Barbourville & Knox County School District	Unincorporated Knox County
Land and Buildings	\$1.1064	\$1.0764	\$0.754
Manufacturing			
Machinery	0.150	0.150	0.150
Pollution Control			
Equipment	0.150	0.150	0.150
Inventories			
Raw materials	0.001	0.001	0.001
Goods in Process	0.001	0.001	0.001
Finished Goods	1.0102	0.9432	0.6208
Automobiles & Trucks	1.4632	1.2062	0.8838
Other Tangible			
Personal Property	1.4592	1.3922	1.0698
Intangibles (Accounts receivable*, money in hand, stock, notes, bonds)	0.250	0.250	0.250
Goods Stored in Public Warehouses in Transit Status	0.001	0.001	0.001
Private Leaseholds in Industrial Revenue Bond Financed Facilities	0.015	0.015	0.015

\* Accounts receivable are taxed at 85 percent of face value, for an effective rate of \$0.2125 per \$100 valuation.

**Safety**

<b>Police</b>	<b>Barbourville</b>	<b>Knox County</b>
Total staff	9	5
Radio-patrol cars	7	5
<b>Fire*</b>		
Insurance Services Office, Public Protection Classification	5	**
Volunteers	30	222

**Refuse Collection and Disposal**

Residential, business, and industrial service to Barbourville and Knox County must be arranged with private contractors.

---

\* Includes copyrighted material of ISO Commercial Risk Services, Inc., with its permission.

\*\* Nine fire departments serve Knox County with insurance ratings ranging from 5 to 10.

## EDUCATION

### Public Schools

	Barbourville Independent*	Knox County**
Total Enrollment (Fall 1988)	522	5,248
Kindergarten	52	378
Elementary	275	3,384
Junior High	84	
High School	111	1,486
 Pupil-Teacher Ratio (1987-88)	 18-1	 20-1
 Percent High School Graduates to College (1987-88)	 61.3	 35.8
 Expenditures Per Pupil (1987-88)	 \$2,103.53	 \$2,109.65

### Nonpublic Schools

<u>School</u>	<u>Enrollment</u>	<u>Grades</u>
Knox County Christian School	85	K-8

\* The Barbourville Independent School System will begin construction of a \$450,000 library and classroom addition in the spring of 1989.

\*\* Construction of a new 750-student elementary school is nearing completion in the Knox County School System. A vocational classroom addition at the Knox County High School was completed in December 1988. Elementary gymnasiums for Artemus, Boone, Dewitt and Flat Lick are currently being designed, with bid date expected by late spring of 1989.



## Area Colleges and Universities

<u>Name</u>	<u>Location (Miles distant)</u>	<u>Enrollment (Fall, 1987)</u>	<u>Highest Degree Conferred</u>
Union College	Barbourville, Kentucky	1,011	Masters, Specialist
Sue Bennett College	London, Kentucky (28)	523	Associate
Cumberland College	Williamsburg, Kentucky (34)	1,931	Masters
Lincoln Memorial University	Harrogate, Tennessee (35)	1,410	Masters
Somerset Community College	Somerset, Kentucky (60)	1,479	Associate
Hazard Community College	Hazard, Kentucky (64)	977	Associate
Berea College	Berea, Kentucky (65)	1,621	Baccalaureate
Southeast Community College	Cumberland, Kentucky (73)	1,375	Associate
Eastern Kentucky University	Richmond, Kentucky (78)	13,099	Masters, Specialist*

### Union College

Union College, founded in Barbourville in 1879, is a nonsectarian, coeducational, church-related institution of higher education, affiliated with the United Methodist Church. Union College offers liberal arts, pre-professional and professional programs leading to a Bachelor's degree; associate degree programs; and a master's degree in education. Special programs available at the college include the Appalachian Semester. In addition, continuing education courses are offered to meet the needs of the college's service area.

\* Joint doctoral degree programs are offered in cooperation with the University of Kentucky, Lexington. The degrees are issued by the University of Kentucky.

## Vocational Training

The Bluegrass State Skills Corporation, an independent public corporation created and funded by the Kentucky General Assembly, provides programs of skills training to meet the needs of business and industry from entry level to advanced training, and from upgrading present employees to retraining experienced workers.

The Bluegrass State Skills Corporation is the primary source for skills training assistance for a new or existing company. The Corporation works in partnership with other employment and job training resources and programs, as well as Kentucky's economic development activities, to package a program customized to meet the specific needs of a company.

Vocational training is available at both the state vocational-technical schools and the area vocational education centers. The state vocational-technical schools are post-secondary institutions. The area vocational education centers are designed to supplement the curriculum of high school students. Both the state vocational-technical schools and the area vocational education centers offer evening courses to enable working adults to upgrade current job skills.

Arrangements can be made to provide training in the specific production skills required by an industrial plant. Instruction may be conducted either in the vocational school or in the industrial plant, depending upon the desired arrangement and the availability of special equipment.

### Nearest State School

Laurel County State Vocational-Technical School  
London, 28 miles distant

Consumer & Home Economics  
Commercial Foods  
Consumer & Family Life  
Skills  
Health & Personal Services  
Occupations  
Cosmetology  
Medical Assisting  
Industrial Education  
Air Conditioning  
Auto Body Repair  
Auto Mechanics  
Carpentry  
Drafting (with CAD/CAM)  
Electricity

Machine Shop  
Masonry  
Welding  
Learning Resource Center  
Public Service Occupations  
Business/Industry Security  
Training  
CPR Training  
Electrical Safety Training  
Emergency Medical Care  
Fire Service Training  
First Aid & Safety  
Rescue & Emergency Services  
Training

Nearest Area Education Center

Knox County Area Vocational Education Center  
Barbourville

Health & Personal Services  
Occupations  
    Health Services  
Industrial Education  
    Carpentry

Diesel Mechanics  
Drafting  
Industrial Electricity  
Welding



## HEALTH

### Local Medical Personnel

Physicians - 11  
Dentists - 8

### Hospitals

<u>General Hospital</u>	<u>Location</u>	<u>Beds</u>
Knox County General Hospital	Barbourville	58

Medical staff - 11 physicians, 22 registered nurses, and 25 licensed practical nurses

### Other Medical Facilities

Crippled Children Services  
Cumberland River Comprehensive Care Center  
Knox County Health Department  
Knox County Home Health Agency

### Ambulance Service

Name - Knox County Ambulance Service  
Staff - 14 full-time and 18 part-time emergency medical technicians

## OTHER LOCAL FACILITIES

### Communications

Telephone -	Continental Telephone Company of Kentucky
Telegraph -	Western Union Toll-Free number, 1-800-325-6000
Newspapers - Weekly and circulation -	Barbourville Advocate  7,000
Radio -	WYWY-AM & FM
Television - Airwave reception from -	Knoxville, Tennessee; Bristol, Virginia
Cable service - Educational Television -	Barbourville Cable TV  The Kentucky Educational Television (K.E.T.) network is available statewide

### Library Services

Public library - Knox County Public Library	
Size collection - 50,000 volumes	
Circulation, 1987-88 - 49,000	
College library - Abigail E. Weeks Memorial Library at Union College*	
(open to the public)	
Size collection - 77,000 volumes	
Special collections - Lincoln Civil War collection, music library, science library, selective depository of federal documents	

### Religious Institutions

Denominations -	Baptist	Church of Christ
	Catholic	Jehovah Witness
	Christian	Methodist
Nearest Synagogues -	Lexington, Kentucky, 102 miles north Knoxville, Tennessee, 103 miles south	
Congregations -	Adath Israel (reform) Ohavey Zion (traditional) Heska Amuna Congregation (orthodox) Temple Bethel (reform)	

\* The Abigail E. Weeks Memorial Library, at Union College, recently completed a major expansion. The \$1.2 million expansion doubled the size of the existing facility.

## Financial Institutions

<u>Banks</u>	<u>Assets</u>	<u>Deposits</u>	<u>Statement Date</u>
American Fidelity Bank and Trust Company	\$50,487,000.00	\$45,917,000.00	6/30/88
Union National Bank and Trust Company	91,582,283.56	82,101,417.29	6/30/88

<u>Savings and Loan Associations</u>	<u>Assets</u>	<u>Deposits</u>	<u>Statement Date</u>
First Federal Savings and Loan Association	\$80,910,532.38	\$71,322,132.61	12/31/87

## Hotels and Motels

Total number - 2  
Total rooms - 30



## RECREATION

### Local

The Barbourville Recreational Park has become the new hub of community recreation with two lighted ball fields for simultaneous baseball and softball games, three tennis courts, a playground and tot-lot. Other public recreational facilities include parks, three playgrounds, five tennis courts, three baseball diamonds, one football field, one softball field, and a badminton court.

Private recreational facilities include a country club with a swimming pool, two tennis courts, and fishing facilities.

Union College is the center for many concerts, lectures, and plays. Local residents are invited to attend most of the school's cultural and sporting events.

Barbourville's Daniel Boone Festival is a popular tourist attraction. The fall event features a queen contest, a parade, a horse show, southern cooking, arts and crafts exhibits, gospel singing, and much more.

Dr. Thomas Walker State Shrine, 6 miles southwest of Barbourville, is the site of the cabin built by Dr. Walker, who led an expedition through Cumberland Gap around 1750. The 12-acre park contains a replica of Kentucky's first pioneer house, a playground, a picnic shelter, and an amphitheater.

### Area (Within 40 miles)

Laurel River Lake is located 16 miles northwest of Barbourville near London. The 5,600-acre lake is considered one of Kentucky's most beautiful lakes. Numerous campgrounds and marinas service the area.

Pine Mountain State Resort Park in Pineville, 19 miles southeast of Barbourville, provides the finest in mountain scenery and the ultimate in quiet comfort. The 1,500-acre park is located in the Kentucky Ridge State Forest and is the scene of the Mountain Laurel Festival each spring. Also featured is a 35-acre lake, 30 lodge rooms, 20 cottages, a dining room, a gift shop, a meeting room, 33 camping sites, a lodge pool, fishing, a 9-hole golf course, hiking trails, a nature center, a recreation room, picnicking, playgrounds, miniature golf, shuffleboard, and planned recreation.

Levi Jackson State Park, 26 miles northwest of Barbourville at London, is a 900-acre park located where the Boone Trace and Wilderness Road pioneer trails converge. In addition to a reproduced pioneer settlement, the park offers a museum on mountain folklore, 15 cabins, a pool, a bathhouse, hiking trails, horseback riding, miniature golf, shuffleboard, 185 campsites, a picnic area, a playground, and an amphitheater.

Cumberland Gap National Historic Park is located 34 miles southeast of Barbourville near Middlesboro. Cumberland Gap is a natural passage which served as a gateway through the Appalachian Mountains for pioneers moving westward into new frontiers. Features at the 20,270-acre park include a frontier museum, Pinnacle Mountain, a restored mountain village, an old iron furnace and caves. In addition, the park provides facilities for camping, picnicking, and hiking.

Cumberland Falls State Resort Park is located 36 miles west of Barbourville near Corbin in the Daniel Boone National Forest. The park is famous for Cumberland Falls which drops 68 feet over a rock precipice and shows one of only two known "moonbows" in the world at full moon. The park offers 53 lodge rooms, woodland suites, 27 cottages, a convention center, camping, fishing, swimming, river rafting, hiking, horseback riding, picnicking, tennis, backpacking, a nature center, shuffleboard, planned recreation, a playground, a gift shop, and an amphitheater.

## COMMUNITY IMPROVEMENTS

### Recent

Knox County received enterprise zone status from the Kentucky Enterprise Zone Authority in January 1986. The Knox County Enterprise Zone offers tax incentives and regulatory relief to qualifying businesses which locate or expand activities within the zone's boundaries. The zone encompasses over 26 square miles of land laying south and east of Corbin and northwest of Barbourville. The zone also includes the 400-acre Tri-County Industrial Park. The county offers a reduction in the annual property tax rate as part of its local incentives package.

A \$6.8 million expansion by the Barbourville Water and Electric Company was recently completed. An 18-inch raw water line was laid from Barbourville to Laurel Lake. The 26-mile water line will serve as a second source of supply. Also included in the project was the extension of service to the community of Grays.

Two highway projects, which will affect Barbourville and will provide four-lane access to the state of Tennessee via U.S. 25E, include: construction of a four-lane highway through Pineville and construction of the Cumberland Gap Tunnel. The four-lane highway will be completed in 1989, while the tunnel will be completed in 1992.

The Union National Bank and Trust Company recently completed a major expansion of its downtown bank facilities. The \$1 million project added 11,320 square feet to the existing facility.

The Abigail E. Weeks Memorial Library, at Union College, completed a major expansion. The \$1.2 million expansion doubled the size of the existing facility.

Jackson Manor, a 24-unit apartment complex, was recently constructed in Barbourville.

Barbourville recently instituted a downtown revitalization program. Plans include new street lighting, new sidewalks, new storm sewers and building renovations.

Construction of a multi-million dollar shopping center was recently completed in Barbourville.

Vocational classrooms were recently constructed at the Knox County High School.

Phase one development of Kay Jay Recreation Park has been completed. Improvements consisted of a softball field, basketball court and concession building. Phase two of the development will consist of a tennis court and a childrens' playground.

### Under Way

Construction of a new 750-student elementary school is nearing completion in the Knox County School System.



## Planned

Gymnasiums for elementary schools at Artemus, Boone, Dewitt and Flat Licks are currently being designed with bid date expected by late spring of 1989.

The Barbourville Independent School System will begin construction of a \$450,000 library and classroom addition in the spring of 1989.

Plans are currently under way to upgrade the Wilderness Trail through Knox County and for restoration of the Wilderness Trail Monument at Flat Lick.

A new four million-gallon-per-day water treatment plant is planned for Barbourville. Cost of the project will be approximately \$4 million.