

1989

## Industrial Resources: Letcher County

Kentucky Library Research Collections  
Western Kentucky University, [spcol@wku.edu](mailto:spcol@wku.edu)

Follow this and additional works at: [https://digitalcommons.wku.edu/letcher\\_cty](https://digitalcommons.wku.edu/letcher_cty)



Part of the [Business Administration, Management, and Operations Commons](#), [Growth and Development Commons](#), and the [Infrastructure Commons](#)

---

### Recommended Citation

Kentucky Library Research Collections, "Industrial Resources: Letcher County" (1989). *Letcher County*. Paper 2.  
[https://digitalcommons.wku.edu/letcher\\_cty/2](https://digitalcommons.wku.edu/letcher_cty/2)

This Report is brought to you for free and open access by TopSCHOLAR®. It has been accepted for inclusion in Letcher County by an authorized administrator of TopSCHOLAR®. For more information, please contact [topscholar@wku.edu](mailto:topscholar@wku.edu).

IR  
604

Letcher

# *Resources for Economic Development*

## Letcher County



**KENTUCKY**  
*Open for Business*

---

RESOURCES FOR ECONOMIC DEVELOPMENT  
LETCHER COUNTY, KENTUCKY

Prepared by  
The Kentucky Cabinet for Economic Development  
Division of Research and Planning  
in cooperation with  
The Letcher County Chamber of Commerce;  
The Letcher County Fiscal Court;  
and  
The City of Whitesburg

1989

# TABLE OF CONTENTS

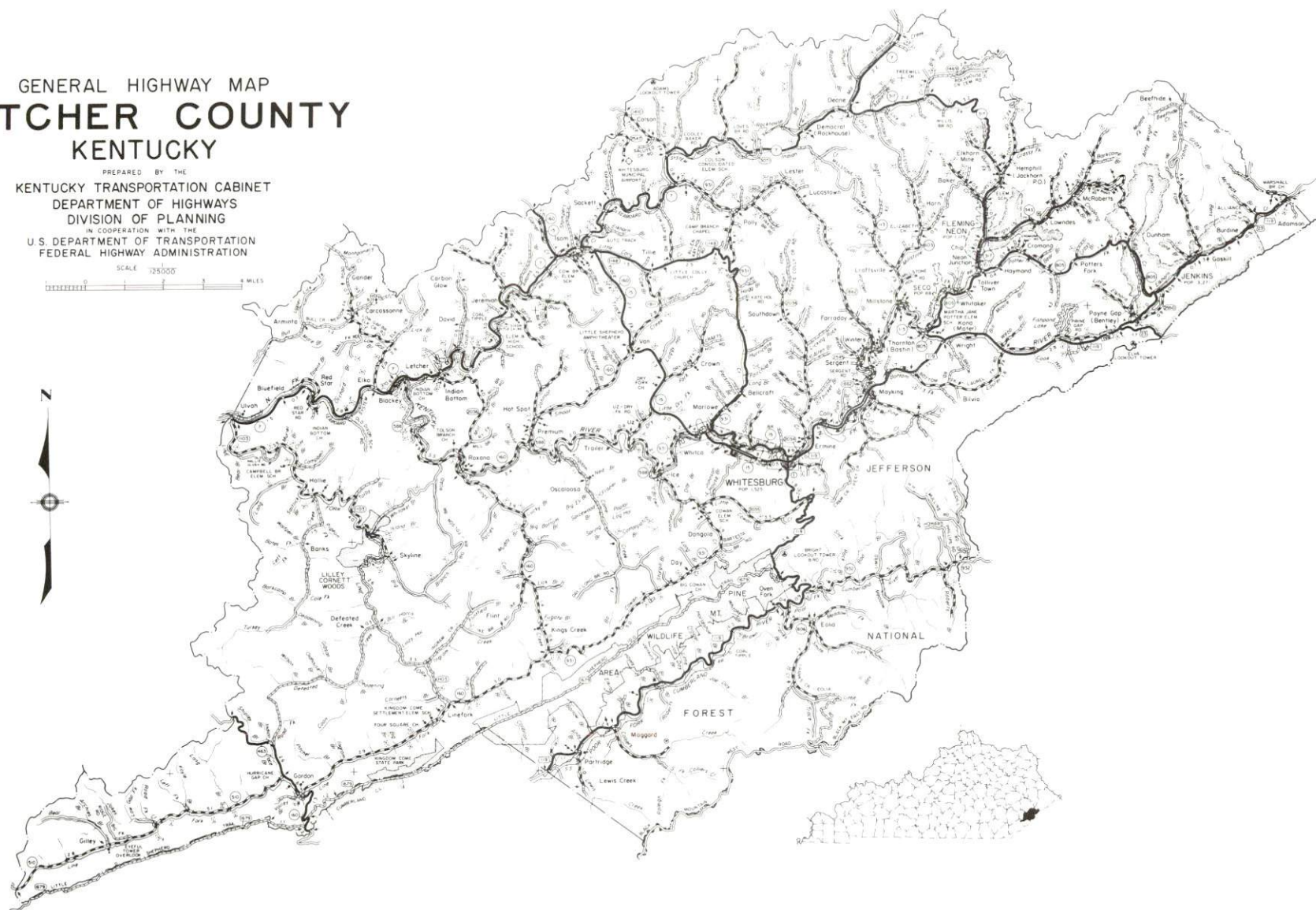
<u>Chapter</u>	<u>Page</u>
LETCHER COUNTY, KENTUCKY - A RESOURCE PROFILE. . . . .	1
THE LABOR MARKET STATISTICS. . . . .	2
Labor Market Area Map. . . . .	2
Population . . . . .	3
Population Projections . . . . .	3
Estimated Labor Supply . . . . .	3
Labor Force Characteristics of Residents, 1988. . . . .	4
Selected Components of Nonagricultural Employment,	
by Place of Work, 1988 . . . . .	5
Per Capita Personal Income . . . . .	6
Average Placement Wages. . . . .	7
Average Weekly Wages of Workers Covered by Unemployment	
Insurance F.Y. 1987-88 - Bar Chart . . . . .	8
Average Weekly Wages by Industry,	
by Place of Work, 1988 . . . . .	9
EXISTING INDUSTRY. . . . .	10
Letcher County Manufacturing Firms,	
Their Products and Employment . . . . .	10
Labor Organizations in Manufacturing Firms . . . . .	11
Selected Industrial Services . . . . .	11
TRANSPORTATION. . . . .	12
Highways . . . . .	12
Truck Service . . . . .	12
Selected Market Location Map . . . . .	13
Rail . . . . .	14
Air . . . . .	14
UTILITIES. . . . .	15
Electricity. . . . .	15
Natural Gas . . . . .	15
Public Water Supply. . . . .	15
Sewerage . . . . .	16
CLIMATE . . . . .	17

<u>Chapter</u>	<u>Page</u>
LOCAL GOVERNMENT . . . . .	18
Structure . . . . .	18
Planning and Zoning . . . . .	18
Local Fees and Licenses . . . . .	18
State and Local Property Taxes . . . . .	19
Combined State and Local Rates Per \$100 Valuation, 1988 . . . . .	19
EDUCATION . . . . .	21
Public Schools . . . . .	21
Nonpublic Schools . . . . .	21
Area Colleges and Universities . . . . .	22
Vocational Training . . . . .	22
OTHER LOCAL FACILITIES . . . . .	24
Local Medical Personnel . . . . .	24
Hospitals . . . . .	24
Other Medical Facilities and Services . . . . .	24
Banks and Savings & Loan Associations . . . . .	24
Newspapers . . . . .	24
Telephone Service . . . . .	24
RECREATION . . . . .	25
COMMUNITY IMPROVEMENTS . . . . .	26

GENERAL HIGHWAY MAP  
**LETCHER COUNTY**  
KENTUCKY

PREPARED BY THE  
KENTUCKY TRANSPORTATION CABINET  
DEPARTMENT OF HIGHWAYS  
DIVISION OF PLANNING  
IN COOPERATION WITH THE  
U.S. DEPARTMENT OF TRANSPORTATION  
FEDERAL HIGHWAY ADMINISTRATION

SCALE 1:25,000  
0 1 2 3 4 MILES





## LETCHER COUNTY, KENTUCKY - A RESOURCE PROFILE

Letcher County, with a 1987 estimated population of 29,400 has a land area of 339 square miles. Whitesburg, the county seat of Letcher County, is located in southeastern Kentucky. In 1986 Whitesburg had an estimated population of 1,480. Whitesburg is located 149 miles southeast of Lexington, Kentucky; 151 miles northeast of Knoxville, Tennessee; 225 miles southeast of Louisville, Kentucky; and 227 miles southeast of Cincinnati, Ohio. Jenkins, located 12 miles northeast of Whitesburg, had a 1986 estimated population of 3,200.

**The Economic Framework** - The total number of Letcher County residents employed in 1988 averaged 7,720. Manufacturing firms in the county reported 50 employees; wholesale and retail trade provided 1,130 jobs; 1,010 people were employed in service occupations; state and local government accounted for 1,020 employees; and 1,720 people were employed by mining and quarrying operations.

**Labor Supply** - There is a current estimated labor supply of 52,010 persons available for industrial jobs in the labor market area. In addition, from 1989 through 1993, 19,180 young persons in the area will become 18 years of age and potentially available for industrial jobs.

**Transportation** - Whitesburg is served directly by highways U.S. 119 and Kentucky 15. U.S. Highway 23 serves Jenkins. The Daniel Boone Parkway is located 35 miles north of Whitesburg, while Interstate 75 is located 93 miles west of Whitesburg. Nine trucking companies provide Whitesburg and Letcher County with interstate and/or intrastate service. CSX Transportation provides main line rail service to Whitesburg and Letcher County. Lonesome Pine Airport, 29 miles south of Whitesburg, maintains a 5,400-foot paved runway. Tri-City Airport, near Bristol, Tennessee, 107 miles southeast of Whitesburg, provides the nearest scheduled commercial airline service.

**Power and Fuel** - Kentucky Power Company provides electric power to Whitesburg and Letcher County. Letcher County is also provided electric power by Cumberland Valley RECC. Natural gas service is currently not available in Letcher County.

**Education** - Primary and secondary education is provided to Whitesburg and Letcher County by the Letcher County School System. The Jenkins Independent School System, located in Jenkins, Kentucky, 12 miles northeast of Whitesburg, also operates in Letcher County. Ten institutions of higher learning are located within 100 miles of Whitesburg. Vocational training is provided by Letcher County Area Vocational Education Center in Whitesburg and the Hazard State Vocational-Technical School in Hazard, 31 miles northwest of Whitesburg.

[illegible]



## LABOR MARKET STATISTICS

The Letcher County Labor Market Area includes Letcher County and the adjoining Kentucky counties of Harlan, Knott, Perry, and Pike. The southeastern boundary of Letcher County is formed by the Kentucky-Virginia state line. The Labor Market Area may be supplemented by Wise County, Virginia.

POPULATION			
	<u>1987*</u>	<u>1980</u>	<u>1970</u>
Labor Market Area	203,300	205,402	162,551
Whitesburg	1,480	1,525	1,137
Fleming-Neon	1,170	1,195	-
Jenkins	3,200	3,271	2,552
Letcher County	29,400	30,687	23,165

\* Population estimates. City estimates are for 1986.

Sources: U.S. Department of Commerce, Bureau of the Census, October 1988; University of Louisville, Urban Studies Center, Population Unit.

POPULATION PROJECTIONS				
	<u>1990</u>	<u>1995</u>	<u>2000</u>	<u>2010</u>
Labor Market Area	215,598	224,470	232,292	243,420
Letcher County	31,199	32,229	33,264	34,847

Source: University of Louisville, Urban Studies Center, State Data Center.

ESTIMATED LABOR SUPPLY					
	Current				Future
	<u>Total</u>	<u>Unemployed</u>	<u>Employed Part-Time</u>	<u>Not in Labor Force</u>	<u>Becoming 18 years of age 1989 thru 1993</u>
Labor Market Area*	52,013	10,019	7,693	34,301	19,184
Letcher Co.	8,335	1,462	1,285	5,588	2,866

\* Additional workers may be drawn from other nearby counties.

Note: Unemployed - persons unemployed and actively seeking work; Employed Part-Time - persons employed but working only 14 to 26 weeks per year; Not in Labor Force - represents the number of persons who would enter the labor force if suitable employment were available (based on the assumption that persons in Kentucky would like to participate in the labor force in the same proportion that they do nationally).

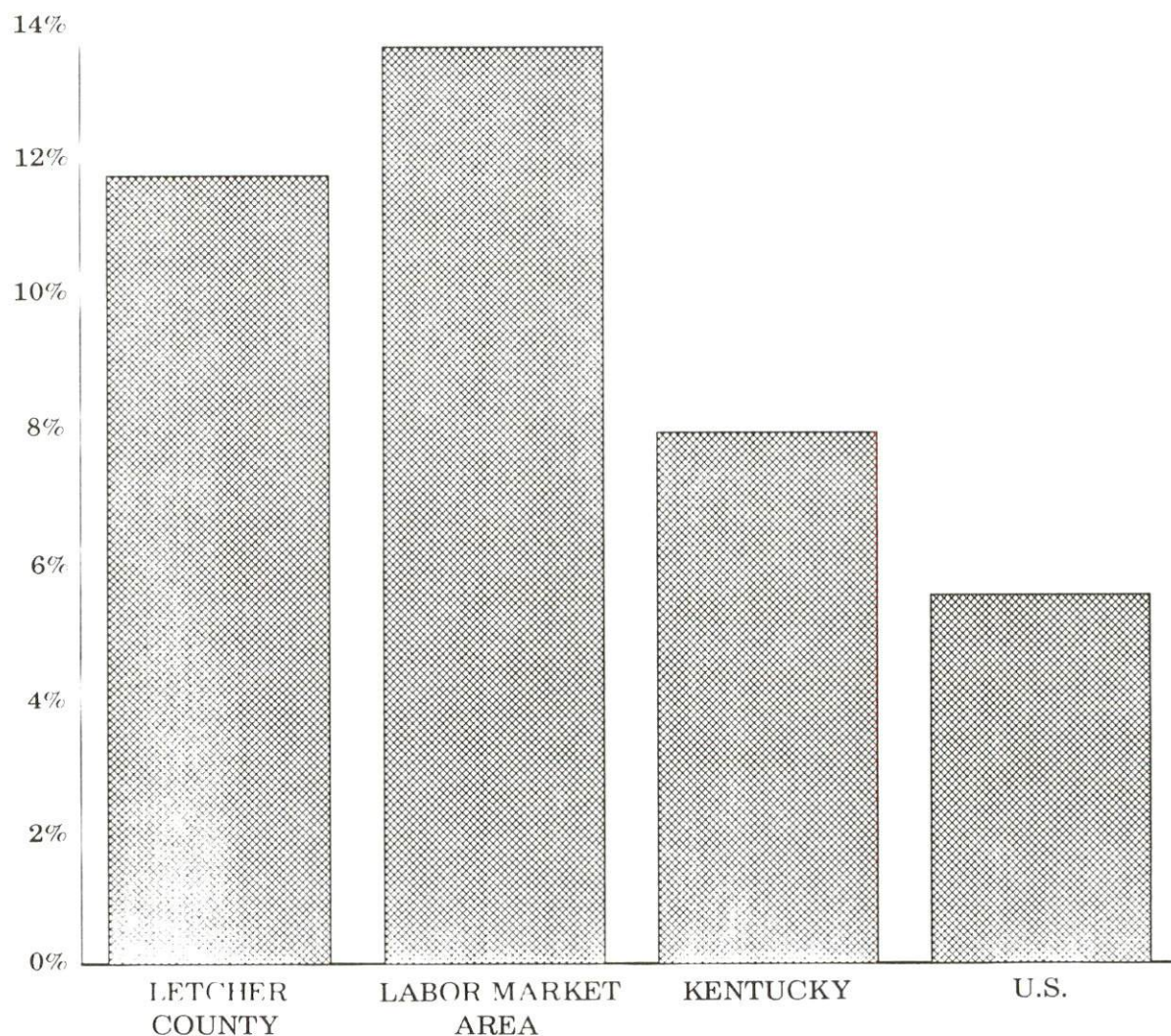
Sources: Kentucky Cabinet for Human Resources, Kentucky Labor Supply Estimates by County, 1987. Kentucky Cabinet for Economic Development, Future Labor Supply Becoming 18 Years of Age, 1989 thru 1993.

# LABOR FORCE CHARACTERISTICS OF RESIDENTS, 1988

	<u>Letcher County</u>	<u>Labor Market Area</u>
Civilian Labor Force	8,739	63,441
Employment	7,719	54,838
Unemployment	1,020	8,603
Rate of Unemployment (%)	11.7	13.6

Source: Kentucky Cabinet for Human Resources, Kentucky Labor Force Estimates, Annual Averages, 1988.

## UNEMPLOYMENT RATES 1988



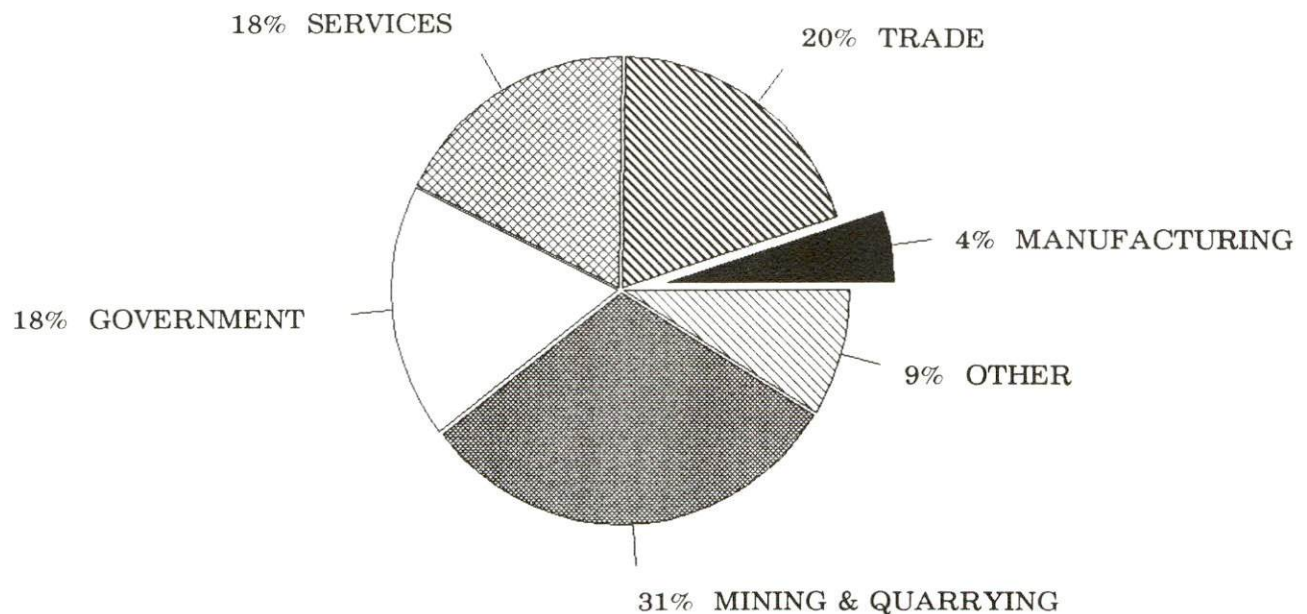


SELECTED COMPONENTS OF NONAGRICULTURAL EMPLOYMENT  
BY PLACE OF WORK, 1988

	Letcher County	Labor Market Area
All Industries (total)	5,468	46,727
Manufacturing	49	961
Wholesale & Retail Trade	1,126	10,738
Services	1,007	7,604
State/Local Government	1,020	8,067
Mining and Quarrying	1,721	14,306

Note: Excludes domestic workers, railway workers, certain nonprofit corporations, majority of federal government workers, and self-employed workers.  
Source: Kentucky Cabinet for Human Resources, Average Monthly Workers Covered by Kentucky Unemployment Insurance Law, 1988.

LETCHER COUNTY

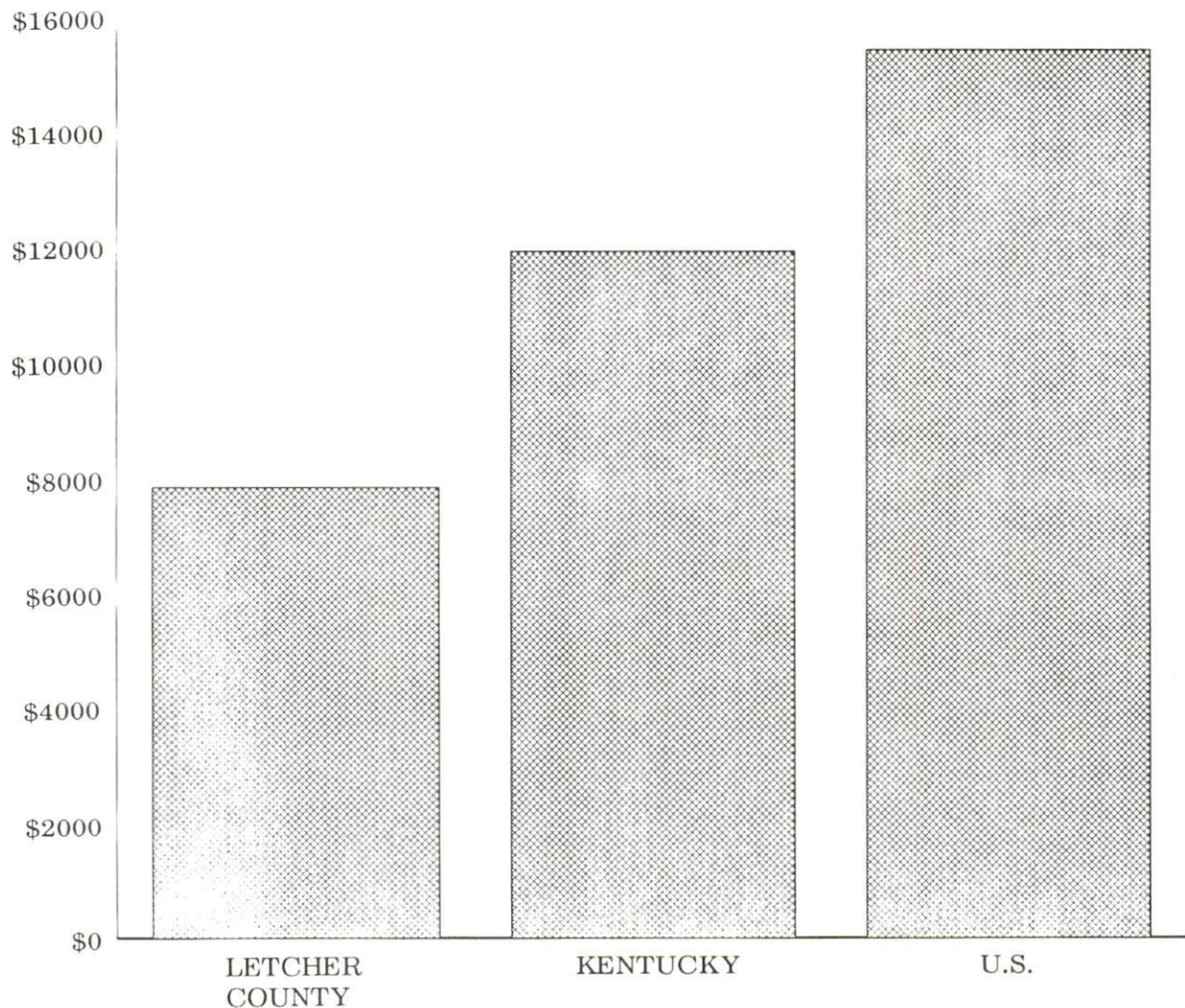


# PER CAPITA PERSONAL INCOME

Area	1983	1987	Percent Change
Letcher County	\$6,281	\$7,891	25.6
Labor Market Area Range	\$6,076 - 8,538	\$7,885 - 10,255	-
Kentucky	\$9,513	\$11,997	26.1
U.S.	\$12,098	\$15,484	28.0

Sources: U.S. Bureau of Economic Analysis, Kentucky Economic Information System, August 1988 and April 1989.

## PER CAPITA PERSONAL INCOME 1987





## AVERAGE PLACEMENT WAGES

---

Letcher County is served by the Hazard local office of the Kentucky Department for Employment Services. The focus of the following data is on job placements made by the Hazard local office and may therefore be used as an indicator of the wages which employers in the area pay new employees. During the twelve months which ended on June 30, 1988, the local employment office filled 1,628 job openings in various occupational categories. The average hourly wage for selected occupational categories were:

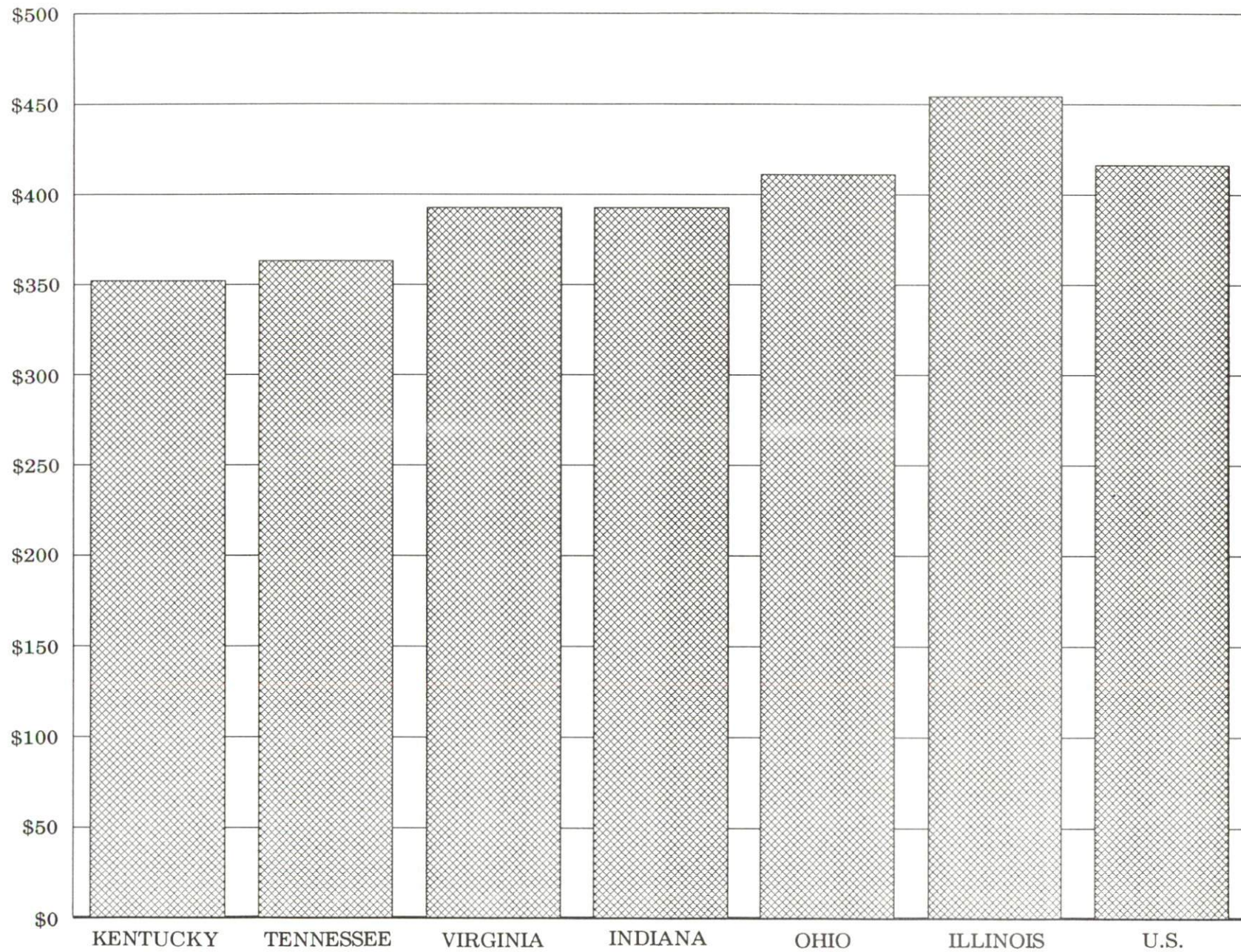
<u>OCCUPATIONAL CATEGORY</u>	<u>NUMBER OF PLACEMENTS</u>	<u>AVERAGE WAGE(\$)</u>
All Occupations	1,628	3.83
Clerical	426	3.44
Sales	137	3.46
Services (excluding domestic)	582	3.33
Agricultural, Fishery, Forestry, etc.	4	4.93
Processing	2	3.55
Machine Trades	26	9.06
Bench Work	33	4.84
Structural	202	4.00
Motor Freight/ Transportation	44	4.83
Packaging and Materials Handling	63	3.57
Other	47	8.94

The Hazard local office also serves Breathitt, Knott, Lee, Leslie, Owsley, Perry, and Wolfe Counties. The above occupational categories are taken from the Dictionary of Occupational Titles published by the U.S. Department of Labor.

---

Source: Kentucky Cabinet for Human Resources, Department for Employment Services.

AVERAGE WEEKLY WAGES OF WORKERS COVERED BY  
UNEMPLOYMENT INSURANCE F. Y. 1987-88





AVERAGE WEEKLY WAGES BY INDUSTRY  
BY PLACE OF WORK, 1988

	<u>Letcher County</u>	<u>Kentucky (State- Wide)</u>	<u>Tennessee</u>	<u>Virginia</u>
All Industries	\$363.19	\$352.31	\$363.12	\$392.56
Mining & Quarrying	559.20	603.27	495.85	596.88
Contract Construction	296.93	380.71	394.27	422.27
Manufacturing	223.75	464.92	416.73	452.60
Transportation, Communications & Public Utilities	325.77	468.17	485.13	554.17
Wholesale & Retail Trade	199.76	238.88	N/A	N/A
Finance, Insurance & Real Estate	318.00	401.17	269.27	466.23
Services	303.47	298.98	343.48	391.67
State/Local Government	303.55	377.81	403.21	457.00
	<u>Indiana</u>	<u>Ohio</u>	<u>Illinois</u>	<u>U. S.</u>
All Industries	\$392.63	\$411.08	\$454.10	\$416.33
Mining & Quarrying	635.77	579.73	674.62	660.40
Contract Construction	449.87	465.46	584.10	469.85
Manufacturing	532.06	569.98	555.83	517.62
Transportation, Communications & Public Utilities	502.69	519.17	584.83	542.33
Wholesale & Retail Trade	N/A	N/A	N/A	N/A
Finance, Insurance & Real Estate	406.58	444.33	579.88	532.52
Services	317.98	348.48	402.38	384.31
State/Local Government	395.31	428.10	453.12	442.71

\* Not disclosed.

N/A Not Available.

Note: The average weekly wage for each category includes the salaries and wages of all persons working for that type business. For example, the manufacturing category includes both production workers and administrative personnel. Excludes domestic workers, railway workers, certain nonprofit corporations, majority of federal government workers, and self-employed workers.

Source: Kentucky Cabinet for Human Resources, Average Weekly Wages of Workers Covered by Kentucky Unemployment Insurance Law, 1988. U.S. Department of Labor, Bureau of Labor Statistics, Average Annual Pay by State and Industry, August 29, 1989.

## EXISTING INDUSTRY

### LETCHER COUNTY MANUFACTURING FIRMS, THEIR PRODUCTS AND EMPLOYMENT

<u>Firm</u> <u>(Establishment date)</u>	<u>Product</u>	<u>1989</u> <u>Average Employment</u>
<b>Colson</b>		
Mountain Ready Mix (1984)	Ready-mixed concrete	4
<b>Cromona</b>		
Superior Printing & Publishing Company, Inc. (1954)	Newspapers, letterpress printing, lithographic printing	15
<b>Etty</b>		
Coolidge Johnson Lumber Company (1957)	Sawmill	9
<b>Ermine</b>		
Custom Concrete, Inc. (1989)	Ready-mixed concrete	2
<b>Isom</b>		
M & R Lumber Company (1989)	Mining materials, grate lumber	21
<b>Jackhorn</b>		
Johnson's Printing (1989)	Commercial printing	1
<b>Jenkins</b>		
Adams Concrete Com- pany (1971)	Concrete block	10
Adams Stone Corpor- ation (1959)	Bituminous concrete, agricultural lime	50
<b>Whitesburg</b>		
Heritage Chair (1988) (1920)	Chairs, office furniture	7
Royal Crown Bottling Company, Inc. (1947)	Beverage bottling	20

Sources: Kentucky Cabinet for Economic Development, 1989 Kentucky Directory of Manufacturers; Division of Research and Planning; Letcher County Chamber of Commerce..



## LABOR ORGANIZATIONS IN MANUFACTURING FIRMS

<u>Union</u>	<u>Representing workers at:</u>
United Steelworkers of America, AFL-CIO	Adams Concrete Company; Adams Stone Corporation

## SELECTED INDUSTRIAL SERVICES

<u>Types of Services</u>	<u>Location</u>	<u>Mileage from Whitesburg</u>
Custom Data Processing	Prestonsburg, Kentucky	76
Custom Plastics Producers	Middlesboro, Kentucky	92
Electric Motor Repair	Harlan, Kentucky	46
Grinding, Precision & Tool	Winchester, Kentucky	130
Heat Treating Facilities	Morristown, Tennessee	126
Industrial Equipment & Supplies	Lexington, Kentucky	149
Industrial Gases	Prestonsburg, Kentucky	76
Industrial Waste Removal	Somerset, Kentucky	126
Machine Shops, Tool & Die	Whitesburg, Kentucky	-
Metal Castings	Middlesboro, Kentucky	92
Metal Finishers	Lexington, Kentucky	149
Metal Service Centers	Pikeville, Kentucky	49
Millwrights	Stanton, Kentucky	105
Public Warehouse Facilities	Lexington, Kentucky	149

Sources: Kentucky Cabinet for Economic Development, Kentucky Directory of Selected Industrial Services, 1987; Division of Research and Planning.

## TRANSPORTATION

### Highways

Whitesburg is served directly by U.S. Highway 119 and Kentucky Route 15, both "AAA"-rated (80,000-pound gross load limit) trucking highways. A small section of Kentucky Route 15 north of Whitesburg has a "AA" (62,000-pound gross load limit) rating. Jenkins is served directly by U.S. Highway 23, a "AAA"-rated trucking highway. The Daniel Boone Parkway, a multi-lane toll road, is located 35 miles north of Whitesburg via Kentucky Route 15. Interstate 75 is located 93 miles west of Whitesburg via Kentucky Route 15 and the Daniel Boone Parkway.

U.S. Highway 23 was recently widened to four lanes extending from the Kentucky-Virginia state line to Interstate 81 in Virginia. U.S. 23 and Alternate U.S. 58 in Virginia provide multi-lane access to Interstate 81, 74 miles southeast of Letcher County.

#### HIGHWAY MILES FROM WHITESBURG, KENTUCKY, TO SELECTED MARKET CENTERS

City	Highway Miles	City	Highway Miles
Atlanta, GA	346	Los Angeles, CA	2,308
Baltimore MD	539	Louisville, KY	225
Birmingham, AL	401	Nashville, TN	329
Chicago, IL	492	New Orleans, LA	741
Cincinnati, OH	227	New York, NY	728
Cleveland, OH	467	Pittsburgh, PA	391
Detroit, MI	485	St. Louis, MO	480
Knoxville, TN	151		

Note: Mileage computations are via the best interstate or primary highways, not necessarily the most direct route of travel.

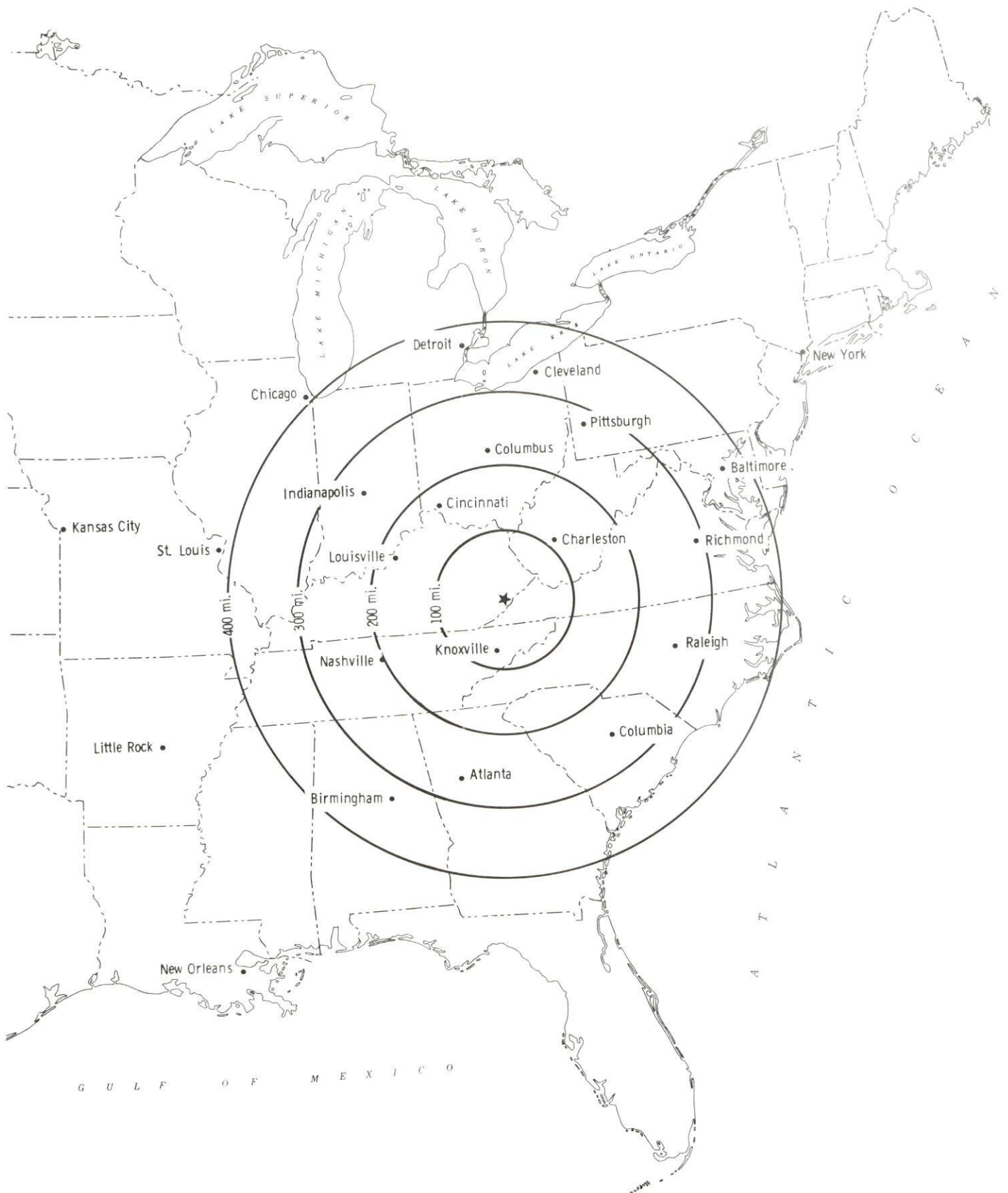
Sources: Rand McNally Deluxe Motor Carriers' Road Atlas, 1989. Official Kentucky Mileage Map, 1980.

### Truck Service

Nine motor carriers provide interstate and/or intrastate trucking service to Whitesburg and Letcher County.

Source: American Motor Carrier Directory, Fall 1989.

## Selected Market Centers



## Rail

CSX Transportation provides main line rail service in Whitesburg and Letcher County. The nearest piggyback facilities are located at Kingsport, Tennessee, 104 miles southeast of Whitesburg.

For details on routing, schedules, rates, and services contact:

Manager  
Industrial Development  
CSX Transportation  
908 West Broadway  
P. O. Box 2157  
Louisville, Kentucky 40201  
(502) 587-7746

## Air

### Local

Location:	Lonesome Pine Airport Wise, Virginia, 29 miles south of Whitesburg
Runways:	1 paved
Length:	5,400 feet
Traffic	
Control:	Unicom, rotating beacon
Lighting:	Sunset to sunrise
Services:	100LL and jet-A fuel; minor A & P repairs; hangar, tie-downs; flight instruction; courtesy car

### Nearest Scheduled Commercial Airline Service

Location:	Tri-City Airport 14 miles southwest of Bristol, Tennessee; 107 miles southeast of Whitesburg
Air Service:	USAir, United Express, American Eagle, Atlantic Southeast, ComAir, Eastern Metro Express, C.C. Air
Daily Arrivals & Departures:	76



## UTILITIES

### Electricity

Company serving Whitesburg and the northern portion of Letcher County -  
Kentucky Power Company  
Source of power - Kentucky Power Company  
For industrial rates contact:

Kentucky Power Company  
1701 Central Avenue  
P. O. Box 1428  
Ashland, Kentucky 41101  
(606) 327-1111

Company serving the southern portion of Letcher County - Cumberland  
Valley Rural Electric Cooperative Corporation  
Source of power - East Kentucky Power Cooperative  
For industrial rates contact:

Industrial Development Division  
East Kentucky Power Cooperative  
P. O. Box 707  
Winchester, Kentucky 40391  
(606) 744-4812

and/or

Cumberland Valley RECC  
U.S. Highway 25E  
Gray, Kentucky 40734  
(606) 528-2677 or (606) 546-9295

### Natural Gas

Natural gas service is not available in Letcher County at the present time.

### Public Water Supply

Company serving Whitesburg - Whitesburg Municipal Waterworks  
112 North Webb Avenue  
Whitesburg, Kentucky 41858  
(606) 633-2737

Source - North Fork of the Kentucky River  
Treatment plant capacity - 750,000 gallons per day  
Average daily consumption - 300,000 gallons  
Peak daily consumption - 325,000 gallons  
Storage capacity - 869,000 gallons  
Water pressure - 48 psi to 68 psi

## Sewerage

Company serving Whitesburg -	Whitesburg Municipal Waterworks 112 North Webb Avenue Whitesburg, Kentucky 41858 (606) 633-2737
Design capacity -	500,000 gallons per day
Average daily flow -	235,000 gallons
Type of treatment -	Primary and secondary
Treated effluent discharged into -	North Fork of the Kentucky River

The Whitesburg Municipal Waterworks is in the process of upgrading its wastewater treatment facility. The \$900,000 project is scheduled for completion in Summer 1990.

## CLIMATE

### Letcher County

#### Temperature

Normal (30-year record)	55.90 degrees
Average annual 1987	56.70 degrees
Record highest, July 1952 (42-year record)	102.00 degrees
Record lowest, January 1985 (42 year record)	-21.00 degrees
Normal heating degree days (30-year record)	4,356
(Heating degree day totals are the sums of negative departures of average daily temperatures from 65 degrees F.)	

#### Precipitation

Normal (30-year record)	41.24 inches
Mean annual snowfall (50-year record)	16.50 inches
Total precipitation 1987	33.28 inches
Mean number days precipitation (.01 inch or more) (42-year record)	133.20
Mean number days thunderstorms (44-year record)	43.30

#### Prevailing winds (through 1963)

Northeast

#### Relative Humidity (26-year record)

1 a.m.	80 percent
7 a.m.	85 percent
1 p.m.	57 percent
7 p.m.	63 percent

Source: U.S. Department of Commerce, Environmental Science Services Administration, Climatological Data, 1987. Station of record: Bristol, Johnson City, Kingsport, Tennessee.

## LOCAL GOVERNMENT

### Structure

Letcher County is governed by a county judge/executive and five magistrates. Each official serves a four-year term. Whitesburg and Jenkins are each governed by a mayor and six council members. Both mayors serve four-year terms, while the council members each serve two-year terms.

### Planning and Zoning

City agency - City of Whitesburg Planning and Zoning Commission

Zoning enforced - Yes

Subdivision regulations enforced - Within city only

Local codes enforced - Building and housing

Mandatory state codes enforced - Kentucky Plumbing code, National

Electric Code, Kentucky Boiler Regulations and Standards, Kentucky

Building Code (modeled after BOCA code)

### Local Fees and Licenses

The City of Whitesburg levies a business license fee that ranges from \$3.75 to \$750 annually.



## State and Local Property Taxes

All property in Kentucky, except items exempted by the state constitution, is taxed by the state. Property which also may be taxed by local jurisdictions includes land and buildings, finished goods inventories, automobiles, trucks, office furniture and office equipment. Local taxing jurisdictions in Kentucky include counties, cities, and school districts.

All property in Kentucky is assessed at 100 percent of fair cash value.

### COMBINED STATE AND LOCAL RATES PER \$100 VALUATION, 1988

	Whitesburg	Jenkins & Jenkins Independent School District
Land and Buildings	\$1.093	\$1.495
Manufacturing		
Machinery	0.150	0.150
Pollution Control		
Equipment	0.150	0.150
Inventories		
Raw Materials	0.001	0.001
Goods in Process	0.001	0.001
Finished Goods	0.890	1.301
Automobiles & Trucks	1.425	2.191
Other Tangible		
Personal Property	1.339	1.750
Intangibles (Accounts receivable*, money in hand, stock, notes, bonds)	0.250	0.250
Goods Stored in Public Warehouses in Transit Status	0.001	0.001
Private Leaseholds in Industrial Revenue Bond Financed Facilities	0.015	0.015

(Continued)

	Letcher County and Jenkins Independent School District	Unincorporated Letcher County
Land and Buildings	\$1.095	\$0.753
Manufacturing		
Machinery	0.150	0.150
Pollution Control		
Equipment	0.150	0.150
Inventories		
Raw Materials	0.001	0.001
Goods in Process	0.001	0.001
Finished Goods	0.901	0.550
Automobiles & Trucks	1.791	1.085
Other Tangible		
Personal Property	1.350	0.999
Intangibles (Accounts receivable*, money in hand, stock, notes, bonds)	0.250	0.250
Goods Stored in Public Warehouses in Transit Status	0.001	0.001
Private Leaseholds in Industrial Revenue Bond Financed Facilities	0.015	0.015

\* Accounts receivable are taxed at 85 percent of face value, for an effective rate of \$0.2125 per \$100 valuation.

## EDUCATION

### Public Schools

	Jenkins Independent	Letcher County
Total Enrollment (Fall, 1988)	921	5,142
Accreditation	-	Southern Association of Colleges & Schools
Pupil-Teacher Ratio (1987-88)	18-1	21-1
Percent High School Graduates to College (1987-88)	62.1	46.9
Expenditures Per Pupil (1987-88)	\$2,578.71	\$2,126.67

The Jenkins Independent School System recently completed a \$600,000 classroom addition to Burdine Elementary School.

The Letcher County School System recently completed construction of a new middle school in Whitesburg, a six-room addition at Letcher Elementary, and an industrial arts building at Fleming-Neon High School. In addition, the school system is in the process of renovating Whitesburg High School, constructing a new addition to the existing high school building, and constructing a new cafeteria at Fleming-Neon Elementary.

### Nonpublic Schools

<u>School</u>	<u>Enrollment</u>	<u>Grades</u>
Calvary Christian Academy	36	K-7
Calvary Christian High School	16	8-12



## Area Colleges and Universities

<u>Name</u>	<u>Location (Miles from Whitesburg)</u>	<u>Enrollment (Fall, 1988)</u>
Southeast Community College	Cumberland, Kentucky (24)	1,603
Alice Lloyd College	Pippa Passes, Kentucky (28)	507
Hazard Community College	Hazard, Kentucky (31)	1,042
Clinch Valley College of the University of Virginia	Wise, Virginia (37)	1,688
Pikeville College	Pikeville, Kentucky (49)	915
Lees College	Jackson, Kentucky (63)	432
Prestonsburg Community College	Prestonsburg, Kentucky (76)	2,088
Sue Bennett College	London, Kentucky (90)	551
Union College	Barbourville, Kentucky (97)	1,048
Lincoln Memorial University	Harrogate, Tennessee (98)	1,582

Southeast Community College recently instituted a program that offers a broad range of night courses in Whitesburg. Several of these courses may transfer to a four-year institution. Day classes will begin in Fall 1990 at the new Whitesburg campus, an annex of Southeast Community College.

## Vocational Training

Vocational training is available at both the state vocational-technical schools and the area vocational education centers. The state vocational-technical schools are post-secondary institutions. The area vocational education centers are designed to supplement the curriculum of high school students. Both the state vocational-technical schools and the area vocational education centers offer evening courses to enable working adults to upgrade current job skills.

Arrangements can be made to provide training in the specific production skills required by an industrial plant. Instruction may be conducted either in the vocational school or in the industrial plant, depending upon the desired arrangement and the availability of special equipment.

## Bluegrass State Skills Corporation

The Bluegrass State Skills Corporation, an independent public corporation created and funded by the Kentucky General Assembly, provides programs of skills training to meet the needs of business and industry from entry level to advanced training, and from upgrading present employees to retraining experienced workers.

(Continued)

The Bluegrass State Skills Corporation is the primary source for skills training assistance for a new or existing company. The Corporation works in partnership with other employment and job training resources and programs, as well as Kentucky's economic development activities, to package a program customized to meet the specific needs of a company.

<u>Vocational School</u>	<u>Location (Miles from Whitesburg)</u>	<u>Enrollment Fall, 1987</u>
Hazard State Vocational-Technical School	Hazard (31)	818
Letcher County Area Vocational Education Center	Whitesburg	522

## OTHER LOCAL FACILITIES

### Local Medical Personnel

Physicians - 29  
Dentists - 10

### Hospitals

<u>General Hospital</u>	<u>Location</u>	<u>Beds</u>
Whitesburg Appalachian Regional Health Care	Whitesburg	90
Jenkins Community Hospital	Jenkins	60

#### Whitesburg Appalachian Regional Health Care

Medical staff - 22 active staff physicians, 46 registered nurses, 29  
licensed practical nurses

#### Jenkins Community Hospital

Medical staff - 17 physicians, 17 registered nurses, 18 licensed practical  
nurses

Jenkins Community Hospital recently renovated its existing facility.  
Improvements included adding a new cat-scan unit and overall reconstruction of  
the patients' rooms.

### Other Medical Facilities and Services

Golden Years Rest Home (Jenkins)  
Daniel Boone Clinic  
Letcher County Health Department  
P & B Ambulance Service

Mountain Comprehensive Health Corporation provides health care at the  
Whitesburg Clinic, the McRoberts Clinic, the Leatherwood-Blackey Clinic, and  
at special respiratory clinics in Whitesburg.

### Banks and Savings & Loan Associations

The Bank of Whitesburg  
First Security Bank and Trust Company

### Newspapers

Letcher County Community Press (weekly)  
The Mountain Eagle (weekly)

### Telephone Service

South Central Bell Telephone Company  
Continental Telephone Company (Jenkins)



## RECREATIONAL AND CULTURAL ATTRACTIONS

### Local

#### Recreation

Letcher County maintains a public park which includes a swimming pool, four tennis courts, two playgrounds, a baseball diamond, and a football field. Private recreational facilities include a twin-cinema theatre, a country club, a golf course, a swimming pool, a skating rink, and a drive-in theater.

Bad Branch Falls Nature Conservancy is located 10 miles south of Whitesburg. This hiking area features a 60-foot waterfall and various endangered plant and animal species.

Jefferson National Forest, which lies in Kentucky and Virginia, is located approximately five miles east of Whitesburg. Hunting, fishing, and camping are permitted.

Carr Fork Lake, located about 20 miles north of Whitesburg, is a 710-acre flood control lake which provides excellent recreational facilities. Kentucky Highways 15 and 160 provide easy access to the lake area. The lake provides swimming, boating, productive fishing and a camping area with hookups and primitive campsites.

The Lilley Cornett Woods is located in Letcher County, approximately 30 miles east of Whitesburg. Guided tours are offered from April to October in the 554 acres of virgin woodland.

Development of new picnic areas and overlooks is under way at the Little Shepherd Trail. This is a state-designated scenic route on the Pine Mountain ridge.

#### Culture

Appalshop, Inc., located in Whitesburg, is an award-winning, nationally acclaimed non-commercial arts and education center which produces and distributes film and television documentaries, recordings, radio programs, and plays focusing on the Appalachian region. The center consists of Appalshop Films, Headwaters Television, June Appal Recordings, Roadside Theater, WMMT-FM, and the Appalshop Center, which features an art gallery and a 175-seat theatre and presents a variety of performances and community activities throughout the year.

Letcher County Arts Council, Inc., promotes art, music, theatre, dance, writing, and other cultural programs to the schools and the community in the area. High quality ballet, jazz and modern dance classes are offered in Whitesburg.

### Area Attractions (Within 60 miles)

Breaks Interstate Park  
Buckhorn Lake State Resort Park  
Jenny Wiley State Resort Park (includes outdoor theater)  
Daniel Boone National Forest  
Kingdom Come State Park

## COMMUNITY IMPROVEMENTS

### Recent

U.S. Highway 23 was recently widened to four lanes extending from the Kentucky-Virginia state line in Letcher County to Interstate 81 in Virginia.

Southeast Community College recently instituted a program that offers a broad range of night courses in Whitesburg. Several of these courses may transfer to a four-year institution. Day classes will begin in Fall 1990 at the new Whitesburg campus, an annex of Southeast Community College.

The fire insurance rating in Whitesburg was recently reduced from 7/9 to 5/7.

Whitesburg recently instituted a downtown revitalization program. Many businesses and storefronts have been completely renovated with plans for additional improvements.

Jenkins Community Hospital recently renovated its existing facility. Improvements included adding a new cat-scan unit and overall reconstruction of the patients rooms.

First Security Bank recently constructed a new building in downtown Whitesburg. The \$2 million structure's design captures the classical post-modern style.

Construction of the Letcher County Manor nursing home was recently completed. Total cost of the 92-bed facility was \$3.25 million.

### Under Way

The Whitesburg Municipal Waterworks is in the process of upgrading its wastewater treatment facility. The \$900,000 project is scheduled for completion in Summer 1990.

The Letcher County School System is in the process of renovating Whitesburg High School, constructing a new addition to the existing high school building, and constructing a new cafeteria at Fleming-Neon Elementary.

Development of new picnic areas and overlooks are under way at the Little Shepherd Trail on Pine Mountain.

### Planned

The City of Whitesburg plans to construct a new city hall.

Construction of a new library and county jail in Letcher County is planned.