

1996

# Industrial Resources: Marion County - Lebanon

Kentucky Library Research Collection  
Western Kentucky University, [spcol@wku.edu](mailto:spcol@wku.edu)

Follow this and additional works at: [https://digitalcommons.wku.edu/marion\\_cty](https://digitalcommons.wku.edu/marion_cty)



Part of the [Business Administration, Management, and Operations Commons](#), [Growth and Development Commons](#), and the [Infrastructure Commons](#)

---

## Recommended Citation

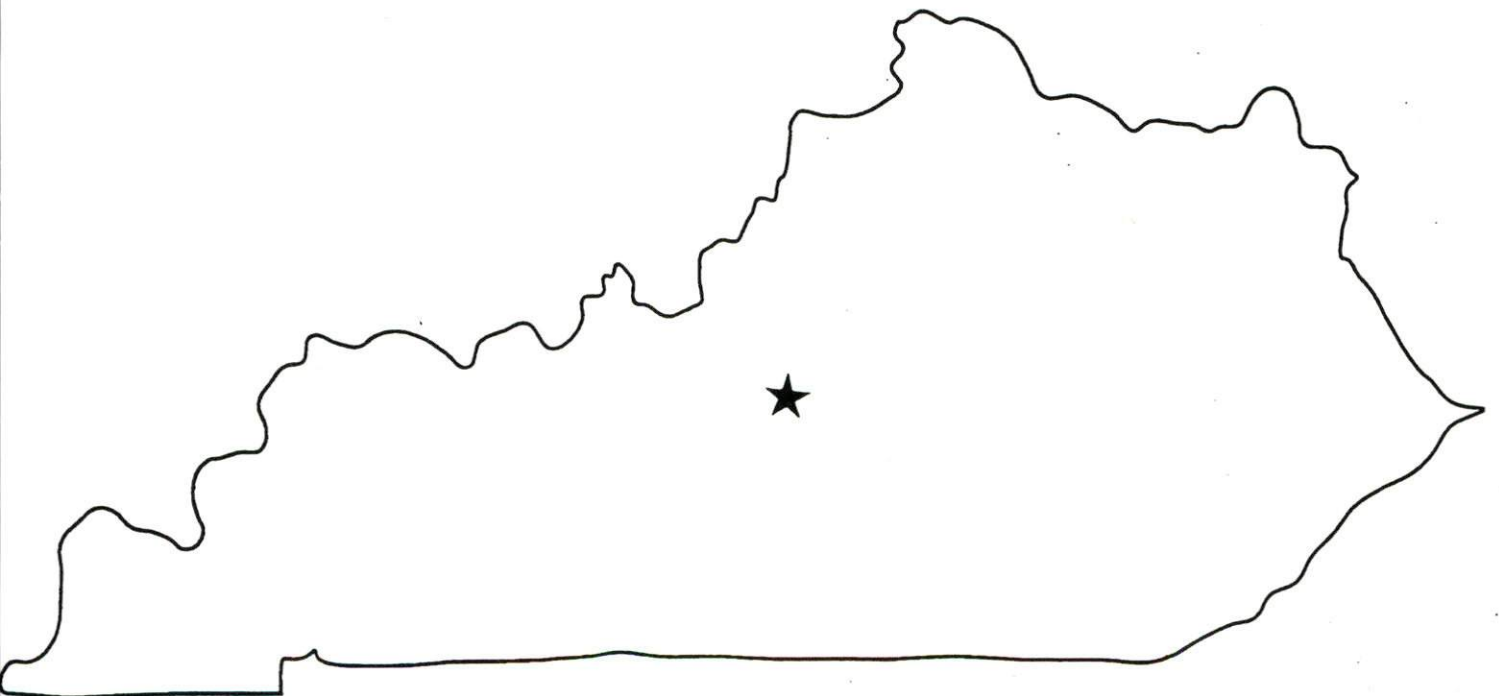
Kentucky Library Research Collection, "Industrial Resources: Marion County - Lebanon" (1996). *Marion County*. Paper 4.  
[https://digitalcommons.wku.edu/marion\\_cty/4](https://digitalcommons.wku.edu/marion_cty/4)

This Report is brought to you for free and open access by TopSCHOLAR®. It has been accepted for inclusion in Marion County by an authorized administrator of TopSCHOLAR®. For more information, please contact [topscholar@wku.edu](mailto:topscholar@wku.edu).

# Kentucky

**Resources For  
Economic Development**

**Lebanon**



Prepared by  
The Kentucky Cabinet for Economic Development  
Division of Research  
in cooperation with  
Lebanon/Marion County Economic Development Office

1996

Division Director - Rene' True; program manager - Keith Roberts; research - Keith Roberts; clerical - Wanda Sharp; graphics - Robert Owens. Cost of printing paid from state funds.

## TABLE OF CONTENTS

<u>Chapter</u>	<u>Page</u>
LEBANON, KENTUCKY-A RESOURCE PROFILE.....	1
THE LABOR MARKET STATISTICS.....	2
Labor Market Area Map.....	2
Population.....	3
Population Projections.....	3
Estimated Labor Supply.....	3
Labor Force Characteristics of Residents, 1994.....	4
Selected Components of Nonagricultural Employment, by Place of Work, 1994.....	5
Per Capita Personal Income.....	6
Average Placement Wages.....	7
Average Weekly Wages of Workers Covered by Unemployment Insurance 1994 - Bar Chart.....	8
Average Weekly Wages by Industry, by Place of Work, 1994.....	9
EXISTING INDUSTRY.....	10
Marion County Manufacturing Firms, Their Products and Employment.....	10
Recent Industrial Developments.....	11
Labor Organizations in Manufacturing Firms.....	12
Selected Industrial Services.....	12
TRANSPORTATION.....	13
Highways.....	13
Truck Service.....	13
Selected Market Location Map.....	14
Rail.....	15
Air.....	15
UTILITIES.....	16
Electricity.....	16
Natural Gas.....	16
Public Water Supply.....	17
Sewerage.....	17
CLIMATE.....	18

<u>Chapter</u>	<u>Page</u>
LOCAL GOVERNMENT.....	19
Structure.....	19
Planning and Zoning.....	19
Local Fees and Licenses.....	19
State and Local Property Taxes.....	20
EDUCATION.....	21
Public Schools.....	21
Nonpublic Schools.....	21
Area Colleges and Universities.....	22
Vocational Training.....	23
OTHER LOCAL FACILITIES.....	25
Local Medical Personnel.....	25
Hospitals.....	25
Other Medical Facilities and Services.....	25
Banks and Savings & Loan Associations.....	25
Newspapers.....	25
Telephone Service.....	25
RECREATION.....	26

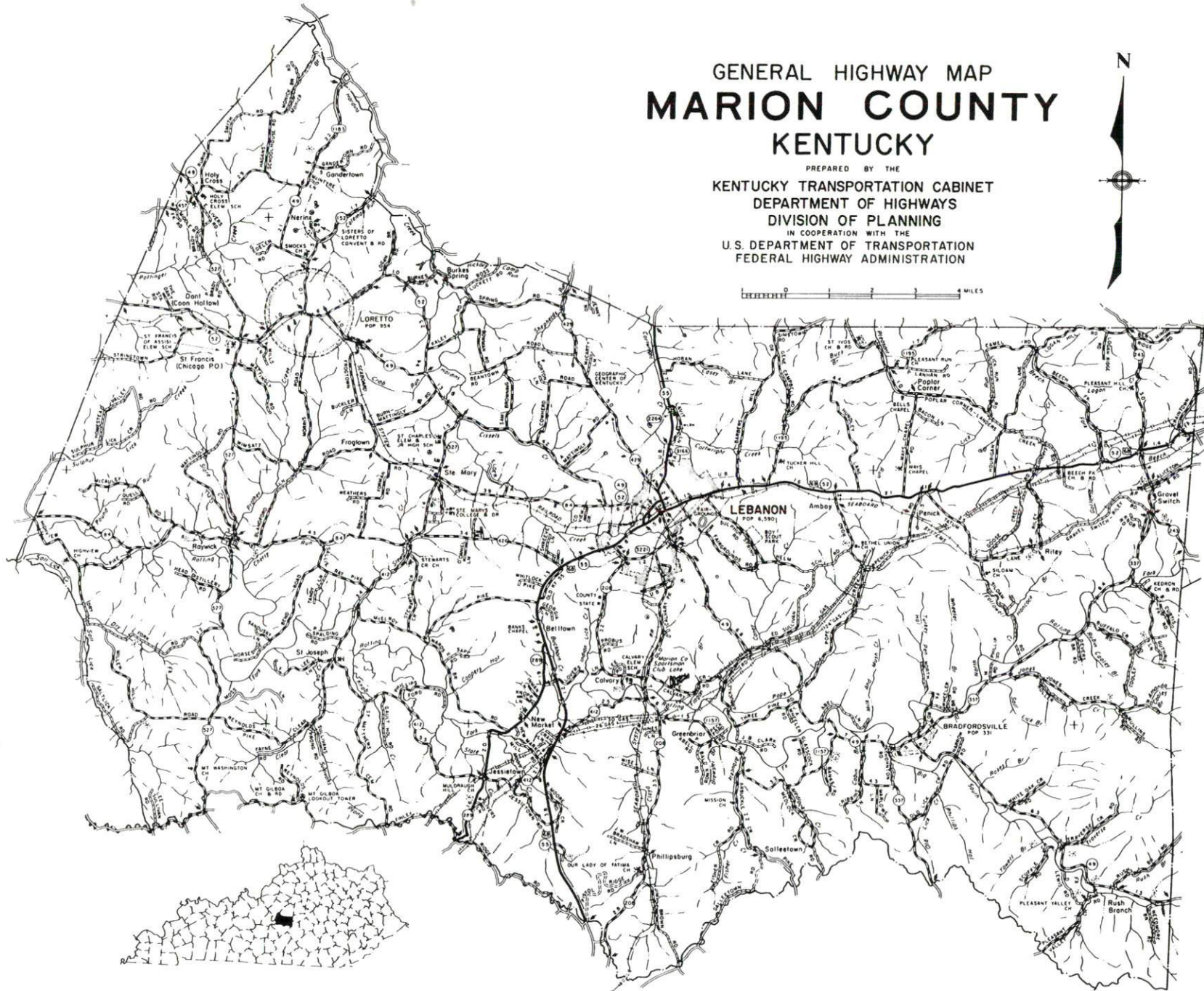


# GENERAL HIGHWAY MAP MARION COUNTY KENTUCKY

PREPARED BY THE  
KENTUCKY TRANSPORTATION CABINET  
DEPARTMENT OF HIGHWAYS  
DIVISION OF PLANNING  
IN COOPERATION WITH THE  
U.S. DEPARTMENT OF TRANSPORTATION  
FEDERAL HIGHWAY ADMINISTRATION



0 1 2 3 4 MILES



## LEBANON, KENTUCKY - A RESOURCE PROFILE

Lebanon, the county seat of Marion County, is located three miles southeast of the geographic center of the state of Kentucky. Lebanon, with an estimated 1994 population of 5,976, is located 62 miles southwest of Lexington, Kentucky; 66 miles southeast of Louisville, Kentucky; 138 miles southwest of Cincinnati, Ohio; 151 miles northeast of Nashville, Tennessee; and 179 miles northwest of Knoxville, Tennessee.

Marion County, located in both the Outer Blue Grass and Mississippian Plateaus Regions, has a land area of 346 square miles. Marion County had an estimated 1994 population of 16,604.

**The Economic Framework** - The total number of Marion County residents employed in 1994 averaged 7,329. Manufacturing firms in the county reported 974 employees; wholesale and retail trade provided 1,010 jobs; 805 people were employed in service occupations; state and local government accounted for 687 employees; and contract construction firms provided 175 jobs.

**Labor Supply** - There is a current estimated labor supply of 5,659 persons available for industrial jobs in the labor market area. In addition, from 1997 through 2001, 10,150 young persons in the area will become 18 years of age and potentially available for industrial jobs.

**Transportation** - Lebanon is served directly by U.S. 68 and Kentucky 55, both "AAA"-rated trucking highways. The Blue Grass Parkway is located 23 miles north via Kentucky 55 and Kentucky 555. Interstate 65 is located 44 miles northwest of Lebanon via the Blue Grass Parkway. Fifteen trucking companies provide interstate and/or intrastate trucking service to Lebanon. R.J. Corman Railroad provides the nearest branch line rail service at Bardstown, Kentucky, 25 miles northwest of Lebanon. The Lebanon-Springfield Airport, four miles north, maintains a paved 4,000-foot runway. The nearest scheduled commercial airline service is provided by the Blue Grass Airport near Lexington, Kentucky, 58 miles northeast of Lebanon; and the Louisville International Airport in Louisville, Kentucky, 62 miles northwest of Lebanon.

**Power and Fuel** - Electric power is provided to Lebanon and parts of Marion County by the Kentucky Utilities Company. Most of Marion County is provided electric power by the Inter-County Rural Electric Cooperative Corporation. Natural gas is provided to Lebanon by the Western Kentucky Gas Company.

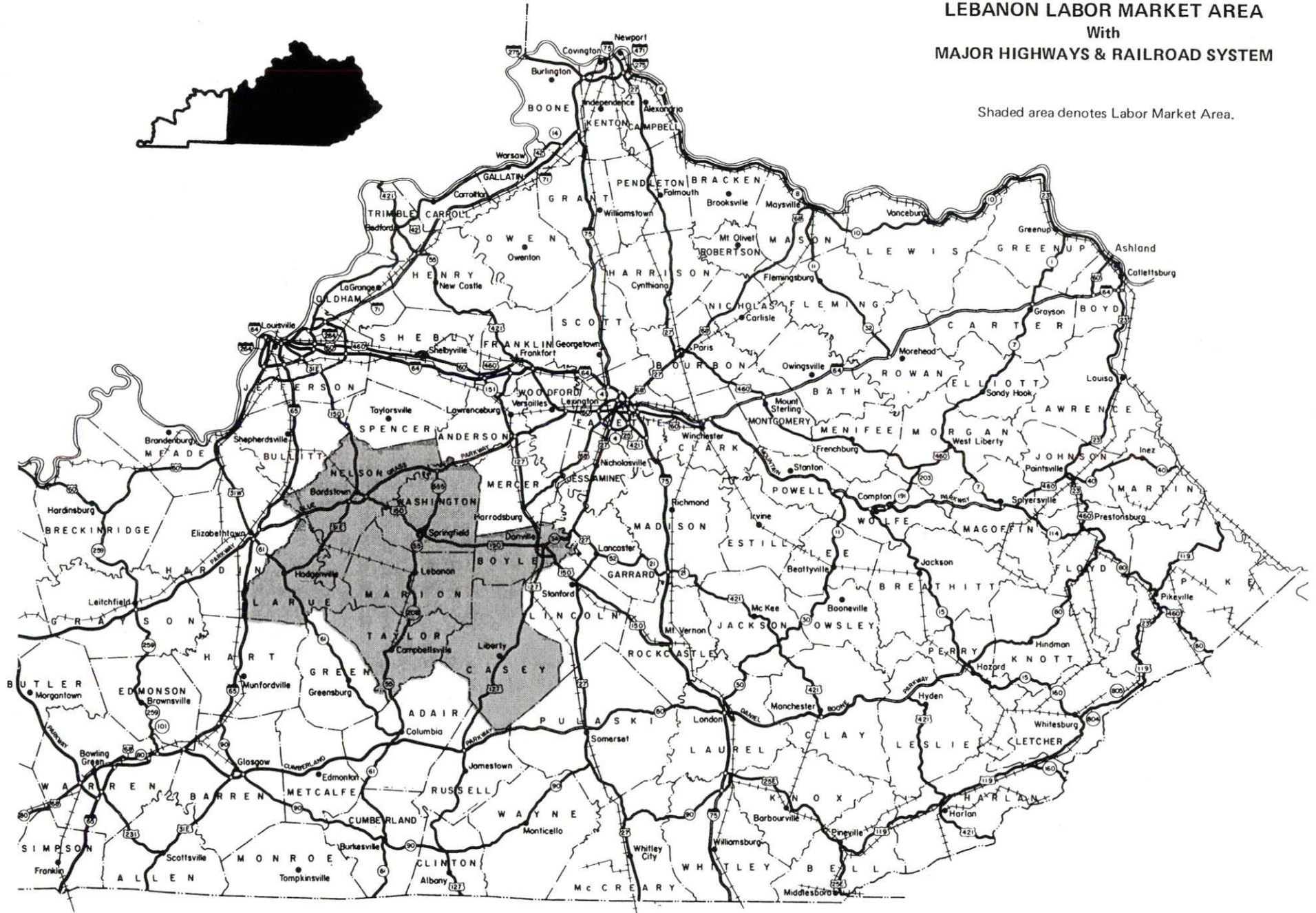
**Education** - Primary and secondary education is provided to Lebanon and Marion County by the Marion County School System. One nonpublic school serves Marion County. Six universities, eight senior colleges, and four community colleges are located within 70 miles of Lebanon. Vocational training is provided by the Marion County Area Technology Center in Lebanon and the Elizabethtown Regional Technology Center in Elizabethtown, 51 miles northwest.



**LEBANON LABOR MARKET AREA**  
With  
**MAJOR HIGHWAYS & RAILROAD SYSTEM**

Shaded area denotes Labor Market Area.

The map displays the Lebanon Labor Market Area, which is shaded in gray. This area includes parts of several counties, notably Jefferson, Woodford, and Madison. Major highways are shown as solid lines with route numbers, and the railroad system is indicated by dashed lines. Numerous cities and towns are labeled throughout the region, including Lexington, Louisville, and various smaller communities. The map also shows the surrounding counties and their names, such as Boone, Grant, and Harrison. An inset map in the top left corner shows the outline of the state of Kentucky, with the labor market area highlighted in black.





## LABOR MARKET STATISTICS

The Lebanon Labor Market Area includes Marion County and the adjoining Kentucky counties of Boyle, Casey, LaRue, Nelson, Taylor, and Washington.

### POPULATION

	<u>1994*</u>	<u>1990</u>	<u>1980</u>	<u>1970</u>
Labor Market Area	135,536	129,327	129,242	113,520
Lebanon	5,976	5,695	6,590	5,528
Marion County	16,604	16,499	17,910	16,714

\*Population estimates.

Source: U.S. Department of Commerce, Bureau of the Census.

### POPULATION PROJECTIONS

	<u>2000</u>	<u>2010</u>	<u>2020</u>
Labor Market Area	143,593	153,229	160,485
Marion County	17,053	17,626	17,814

Note: Population projections are from High Growth Series forecast.

Source: University of Louisville, Urban Studies Center, State Data Center.

### ESTIMATED LABOR SUPPLY

	<u>Current</u>			<u>Future</u>
	<u>Total</u>	<u>Unemployed</u>	<u>Not in Labor Force</u>	<u>Becoming 18 years of age 1997 thru 2001</u>
Labor Market Area*	5,659	4,269	1,390	10,150
Marion County	815	815	0	1,427

\* Additional workers may be drawn from other nearby counties.

Note: Unemployed - persons unemployed and actively seeking work; Not in Labor Force - represents the number of persons who would enter the labor force if suitable employment were available (based on the assumption that persons in Kentucky would like to participate in the labor force in the same proportion that they do nationally). Underemployed persons (employed only 14 to 26 weeks during the year) are no longer included in labor surplus estimates.

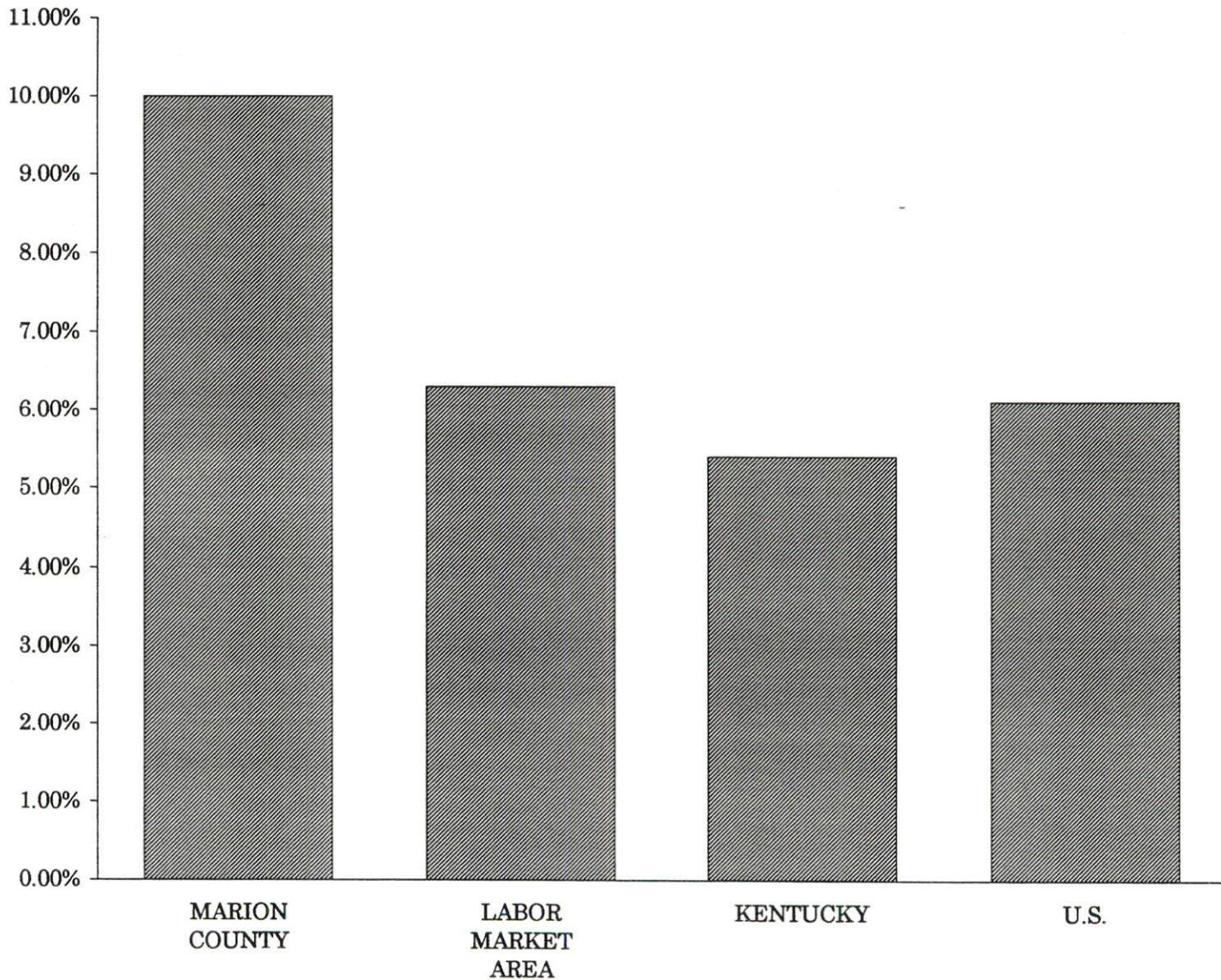
Sources: Kentucky Cabinet for Human Resources, Kentucky Labor Surplus Estimates by County, 1994. Kentucky Cabinet for Economic Development, Future Labor Supply Becoming 18 Years of Age, 1997 thru 2001.

# LABOR FORCE CHARACTERISTICS OF RESIDENTS, 1994

	<u>Marion County</u>	<u>Labor Market Area</u>
Civilian Labor Force	8,144	67,619
Employment	7,329	63,350
Unemployment	815	4,269
Rate of Unemployment (%)	10.0	6.3

Source: Kentucky Cabinet for Human Resources, Kentucky Labor Force Estimates, Annual Averages 1994.

## UNEMPLOYMENT RATES 1994



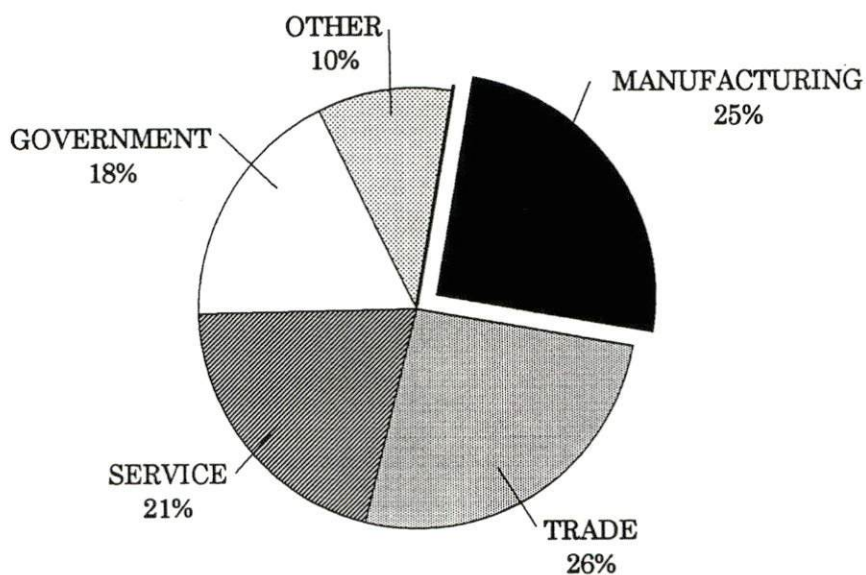
SELECTED COMPONENTS OF NONAGRICULTURAL EMPLOYMENT  
BY PLACE OF WORK, 1994

	<u>Marion County</u>	<u>Labor Market Area</u>
All Industries (total)	3,852	46,479
Manufacturing	974	16,431
Wholesale & Retail Trade	1,010	10,898
Services	805	7,577
State/Local Government	687	6,395
Contract Construction	175	2,048

**Note:** Excludes domestic workers, railway workers, certain nonprofit corporations, majority of federal government workers, and self-employed workers.

**Source:** Kentucky Cabinet for Human Resources, Average Monthly Workers Covered by Kentucky Unemployment Insurance Law, 1994.

MARION COUNTY



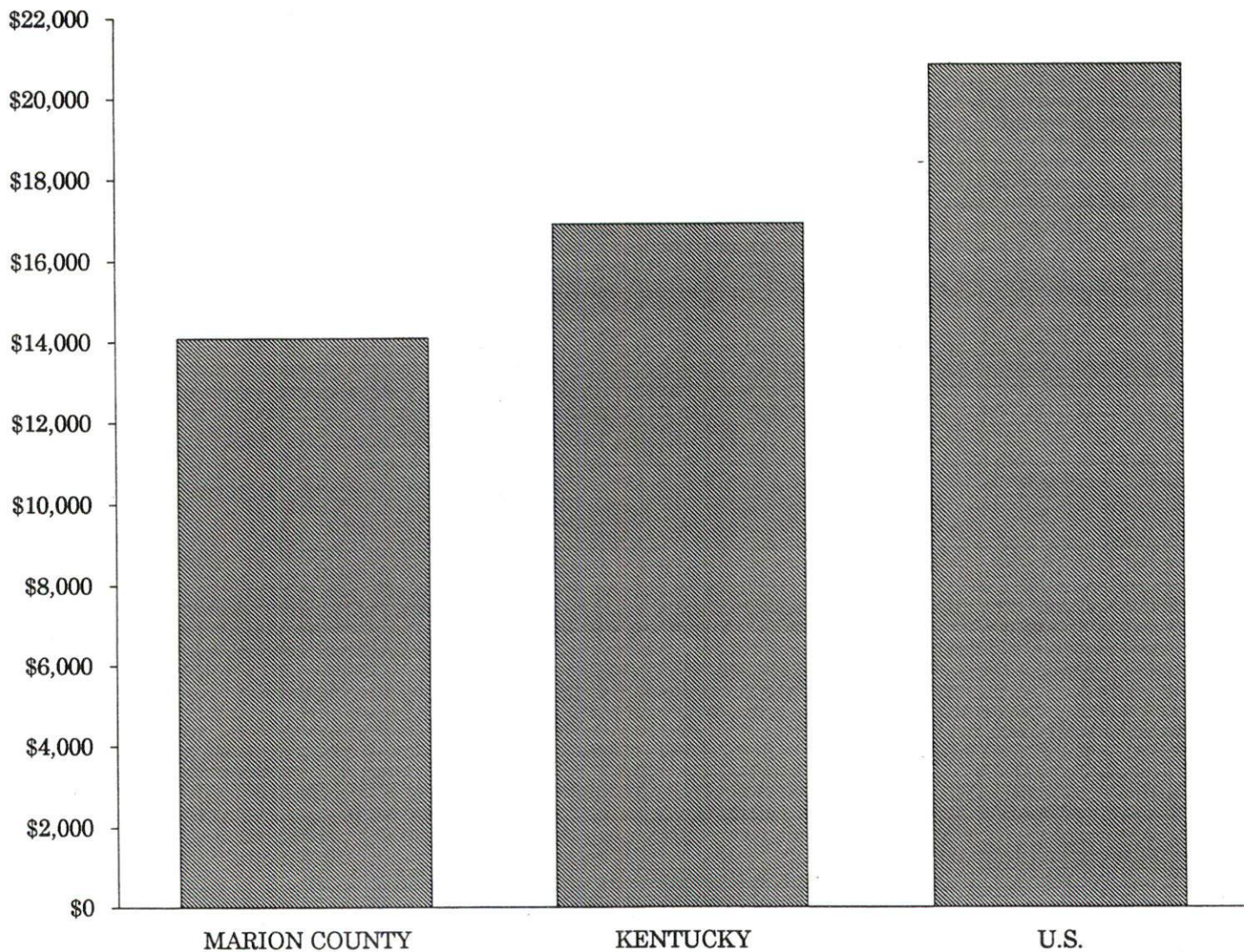


# PER CAPITA PERSONAL INCOME

<u>Area</u>	<u>1989</u>	<u>1993</u>	<u>Percent Change</u>
Marion County	\$11,315	\$14,074	24.4
Labor Market Area Range	\$8,993 - \$13,338	\$11,774 - \$16,149	-
Kentucky	\$13,756	\$16,889	22.8
U.S.	\$17,690	\$20,800	17.6

Source: U.S. Department of Commerce, Bureau of Economic Analysis, Regional Economic Information System.

## PER CAPITA PERSONAL INCOME 1993



## AVERAGE PLACEMENT WAGES

Marion County is served by the Bardstown local office of the Kentucky Department for Employment Services. The focus of the following data is on job placements made by the Bardstown local office and may therefore be used as an indicator of the wages which employers in the area pay new employees. During the twelve months which ended on June 30, 1995, the local employment office filled 1,888 job openings in various occupational categories. The average hourly wage for selected occupational categories were:

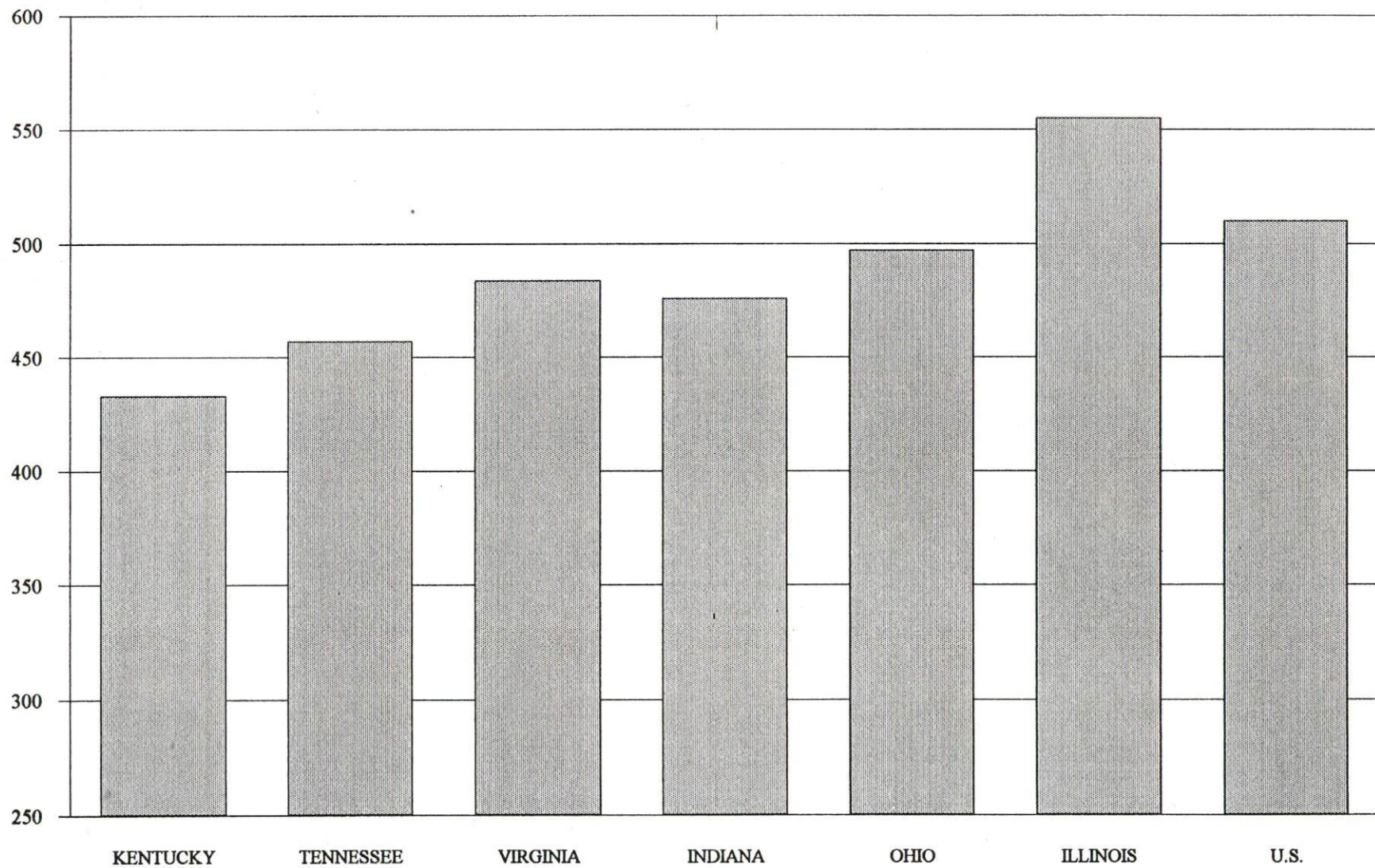
<u>OCCUPATIONAL CATEGORY</u>	<u>NUMBER OF PLACEMENTS</u>	<u>AVERAGE WAGE(\$)</u>
All Occupations	1,888	5.76
Clerical	85	5.08
Sales	13	5.48
Services (excluding domestic)	169	4.45
Agricultural, Fishery, Forestry, etc.	10	4.50
Processing	305	6.13
Machine Trades	295	6.06
Bench Work	555	5.17
Structural	163	7.25
Motor Freight/ Transportation	13	4.97
Packaging and Materials Handling	246	6.52
Other	6	5.13

The Bardstown local office also serves Nelson and Washington Counties. The above occupational categories are taken from the Dictionary of Occupational Titles published by the U.S. Department of Labor.

**Source:** Kentucky Cabinet for Human Resources, Department for Employment Services.



**AVERAGE WEEKLY WAGES OF WORKERS COVERED BY  
UNEMPLOYMENT INSURANCE - 1994**





AVERAGE WEEKLY WAGES BY INDUSTRY  
BY PLACE OF WORK, 1994\*

	<u>Marion County</u>	<u>Kentucky (Statewide)</u>	<u>Tennessee</u>	<u>Virginia</u>
All Industries	\$328.00	\$432.45	\$457.00	\$484.00
Mining & Quarrying	0.00	724.79	638.00	721.00
Contract Construction	339.98	457.02	485.00	476.00
Manufacturing	400.29	560.04	540.00	565.00
Transportation, Communications & Public Utilities	316.65	573.31	588.00	673.00
Wholesale & Retail Trade	184.00	297.57	N/A	N/A
Finance, Insurance & Real Estate	407.96	521.15	585.00	609.00
Services	352.52	385.62	434.00	501.00
State/Local Government	396.82	441.53	N/A	N/A
	<u>Indiana</u>	<u>Ohio</u>	<u>Illinois</u>	<u>U. S.</u>
All Industries	\$476.00	\$497.00	\$555.00	\$510.00
Mining & Quarrying	771.00	682.00	815.00	839.00
Contract Construction	538.00	549.00	681.00	544.00
Manufacturing	653.00	701.00	692.00	645.00
Transportation, Communications & Public Utilities	581.00	619.00	694.00	658.00
Wholesale & Retail Trade	N/A	N/A	N/A	N/A
Finance, Insurance & Real Estate	557.00	572.00	764.00	693.00
Services	400.00	433.00	501.00	483.00
State/Local Government	N/A	N/A	N/A	N/A

\* Wages for U.S. and surrounding states rounded to nearest dollar.

N/A Not Available.

**Note:** The average weekly wage for each category includes the salaries and wages of all persons working for that type business. For example, the manufacturing category includes both production workers and administrative personnel. Excludes domestic workers, railway workers, certain nonprofit corporations, majority of federal government workers, and self-employed workers.

**Sources:** Kentucky Workforce Development Cabinet, Average Weekly Wages of Workers Covered by Kentucky Unemployment Insurance Law, 1994. U.S. Department of Labor, Bureau of Labor Statistics, Employment and Wages, Annual Averages, 1994, November 1995.

## EXISTING INDUSTRY

### MARION COUNTY MANUFACTURING FIRMS, THEIR PRODUCTS AND EMPLOYMENT

<u>Firm</u> <u>(Establishment date)</u>	<u>Product</u>	<u>1995</u> <u>Average Employment</u>
<b>Lebanon</b>		
American Wood Fibers (1990)	Animal bedding (red cedar and pine)	50
Angell Manufacturing Company (1965)	Name plates, plaques, aluminum & plastic trim	162
Cargill, Inc. (1964)	Fertilizer mixing, chemicals, herbicides	4
Central Kentucky Cabinets (1979)	Laminated cabinets & countertops, bookshelves, entertainment centers, kitchen and bath cabinets	4
Central Kentucky Tool & Engineering Company (1970)	Precision machined parts, stampings, tools, dies, jigs, fixtures	45
Curtis Maruyasu America, Inc. (1988)	Steel tubing for auto industry	150
Deeps Farm Supply (1953)	Animal feed	7
Ken Mar Tool, Inc. (1976)	Metal containers, machine shop, laser cutting	118
Kentucky Furniture & Woodworking (1983)	Furniture dimension stock, wine barrels, staves and headings	52
Kentucky Wire & Cable (1994)	Electric cords, wiring harnesses	45
Lanham Brothers Ready Mix Concrete Company (1976)	Ready-mixed concrete	11
Lebanon Machine Shop, Inc. (1955)	Machine shop	6
Lebanon Oak Flooring Company (1897)	Flooring, furniture dimension, millwork products	77
Lebanon Power & Apparatus Company, Inc. (1963)	Rebuilt motors, motor controls, electronic design	22
Marion County Cooperage Company (1983)	Whiskey barrels	175
Plastic Products Company, Inc. (1986)	Injection molded plastics	150
Shuffett Machine & Welding (1986)	Machine shop, welding	10

(Continued)

<u>Firm</u> <u>(Establishment date)</u>	<u>Product</u>	<u>1995</u> <u>Average Employment</u>
T & H Feed Service, Inc. (1956)	Feed for livestock	9
Teledyne Portland Forge (1990)	Steel forgings for aerospace, trucks, and farm machinery	49
The Lebanon Enterprise, Inc. (1966)	Newspaper, printing	10
Union Tool (1994)	Garden tool handles	25
Universal Sportswear, Inc. (1995)	Men's T-shirts	36
Wallace, Inc. (1995)	Business forms, printing	30
Worthington Custom Plastics, Inc. (1995)	Plastic injection molding	300

#### **Loretto**

Makers Mark Distillery, Inc. (1953)	Whiskey, feed	60
--	---------------	----

**Sources:** Kentucky Cabinet for Economic Development, Division of Research; Lebanon/Marion County Economic Development Office.

### **RECENT INDUSTRIAL DEVELOPMENTS**

Curtis Maruyasu America, Inc. recently expanded their facility with a 40,000 square-foot brazing operation. The company manufactures steel tubing for the auto industry.

Far East Tooling, Inc. is in the process of opening a facility in Lebanon. The company makes aluminum castings for the auto industry.

Ken Mar Tool, Inc. has expanded their operation with a 30,000 square-foot addition. The company specializes in tooling and sheet metal fabrication.

Kentucky Wire & Cable, Inc. constructed a 40,000 square-foot facility that will house Electric Cords, Inc. and Northwire, Inc. The company will manufacture electric cords and wiring harnesses.

The Cutting Edge, Inc. has opened a new facility in Lebanon. The company sharpens blades for industrial saws.

Universal Sportswear, Inc. has completed construction of a 20,000 square-foot facility. The garment manufacturing company is presently making tee shirts for Reebok, Sears, R.H. Macey, Chesapeake Bay and Parades' Gift Shops.

Wallace, Inc. recently completed a 90,000 square-foot facility in the Marion County Industrial Park. Wallace is the world's leading high tech production printing company.

Worthington Custom Plastics, Inc. constructed a 150,000 square-foot facility which employs 300 people. The company manufactures molded plastic parts.

The Marion County Industrial Foundation has acquired a 70-acre parcel of property on Kentucky Highway 55 on the north side of Lebanon. This property will be developed as a new industrial park. The area lends itself to a stand-alone site.



## LABOR ORGANIZATIONS IN MANUFACTURING FIRMS

<u>Union</u>	<u>Representing workers at:</u>
International Union of Electronic, Electrical, Technical, Salaried, Machine and Furniture Workers, AFL-CIO	Angell Manufacturing Company
International Woodworkers of America, UF	Lebanon Oak Flooring Company

## SELECTED INDUSTRIAL SERVICES

---



---

<u>Types of Services</u>	<u>Location</u>	<u>Mileage from Lebanon</u>
Custom Plastics Producers	Lebanon, Kentucky	-
Electric Motor Repair	Lebanon, Kentucky	-
Heat Treating Facilities	Frankfort, Kentucky	58
Industrial Waste Removal	Campbellsville, Kentucky	20
Machine Shops, Tool & Die	Lebanon, Kentucky	-
Metal Castings	Louisville, Kentucky	66
Metal Finishers	Bardstown, Kentucky	26
Metal Service Centers	Campbellsville, Kentucky	20
Millwrights & Riggers	Bloomfield, Kentucky	34

---

**Source:** Kentucky Cabinet for Economic Development, Division of Research.

## TRANSPORTATION

### Highways

Lebanon is served by U.S. Highway 68 and Kentucky Highway 55, both "AAA"-rated (80,000-pound gross load limit) trucking highways. The Blue Grass Parkway, which provides easy access to Interstates 64, 65, and 75, is located 23 miles north via Kentucky 55 and 555. Interstate 65 is located 44 miles northwest of Lebanon, while Interstates 64 and 75 are located 65 miles northeast of Lebanon. The Cumberland Parkway is accessible 40 miles south via Kentucky 55.

Portions of U.S. Highway 68, from Lebanon to Danville, were straightened to provide a safer access between the cities. The Kentucky Department of Transportation has designated portions of U.S. Highway 68 as a Scenic Highway.

#### HIGHWAY MILES FROM LEBANON, KENTUCKY, TO SELECTED MARKET CENTERS

City	Highway Miles	City	Highway Miles
Atlanta, GA	335	Los Angeles, CA	2,130
Baltimore, MD	597	Louisville, KY	66
Birmingham, AL	338	Nashville, TN	151
Chicago, IL	353	New Orleans, LA	673
Cincinnati, OH	138	New York, NY	775
Cleveland, OH	380	Pittsburgh, PA	403
Detroit, MI	398	St. Louis, MO	324
Knoxville, TN	179		

**Note:** Mileage computations are via the best interstate or primary highways, not necessarily the most direct route of travel.

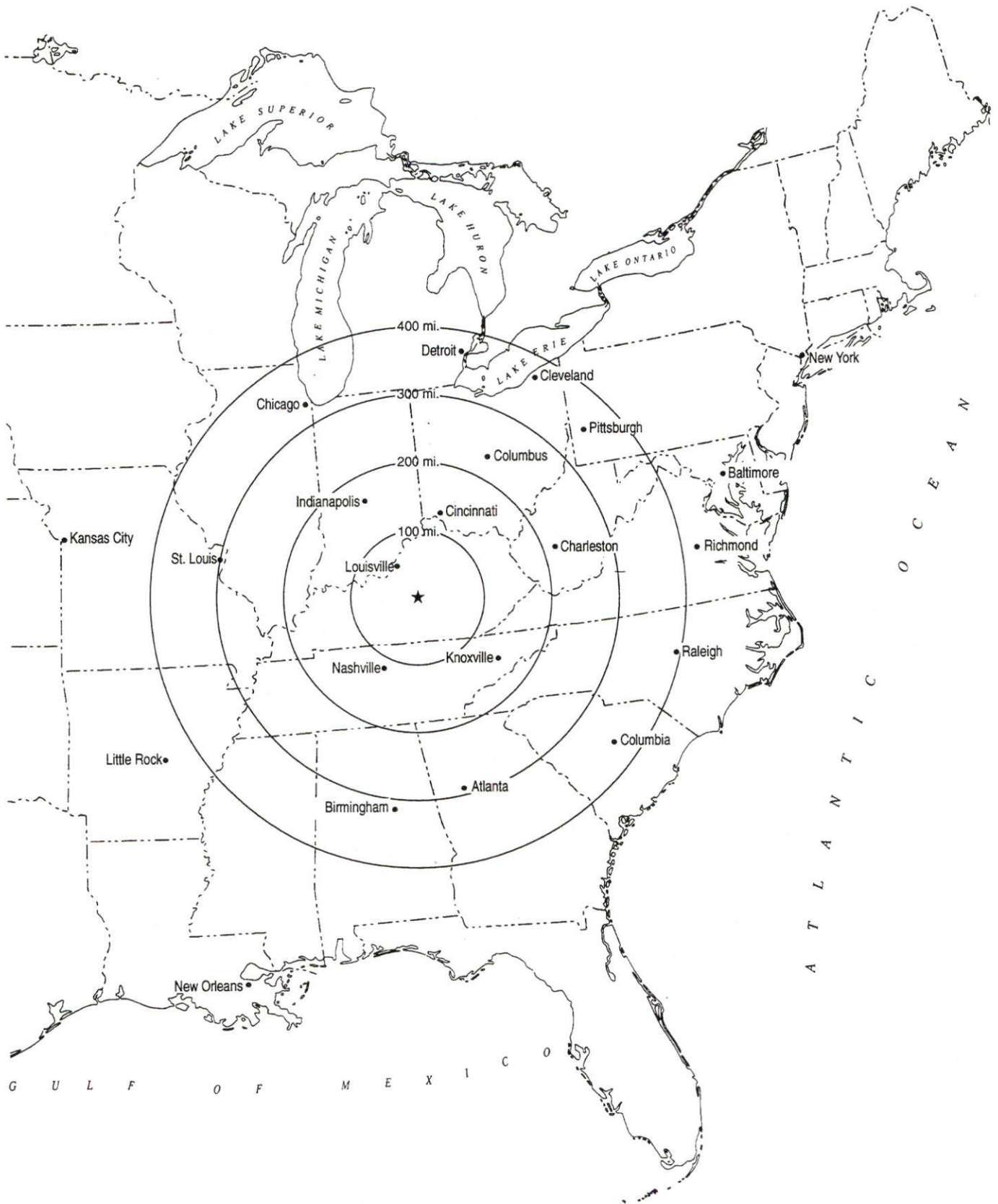
**Sources:** Rand McNally Standard Highway Mileage Guide, 1990. Official Kentucky Mileage Map, 1988.

### Truck Service

Fifteen common carrier trucking companies provide interstate and/or intrastate service to Lebanon.

**Source:** American Motor Carrier Directory, Spring 1996.

## Selected Market Centers





## Rail

R.J. Corman Railroad provides the nearest branch line rail service at Bardstown, Kentucky, 25 miles northwest of Lebanon. The nearest intermodal facilities are located in Louisville, Kentucky, 66 miles northwest.

For details on routing, schedules, rates, and services contact:

R.J. Corman Railroad Corporation  
P.O. Box 279  
Bardstown, Kentucky 40004  
(502) 348-7444

## Air

### Local

Location:	Lebanon-Springfield Airport 4 miles north of Lebanon
Runways:	1 paved
Length:	4,000 feet
Traffic	
Control:	Wind sock, VOR/DME, unicom
Lighting:	Rotating beacon, sunset to sunrise
Services:	80 and 100LL fuel, major and minor A & P repairs, flight instruction, tie-down, hangar, courtesy car

The Lebanon-Springfield Airport plans to expand its runway from 4,000 feet to 5,000 feet.

### Nearest Scheduled Commercial Airline Service

Location:	Blue Grass Airport 4 miles west of Lexington, Kentucky; 58 miles northeast of Lebanon
Air Service:	American Eagle, ASA, ComAir, Delta, Northwest AirlinK, TW Express, United Express, USAir, US Air Express
Daily Arrivals & Departures:	176

Location:	Louisville International Airport 4 miles southeast of center of Louisville, Kentucky ; 62 miles northwest of Lebanon
Air Service:	American, America West Express, American Eagle, ASA, ComAir, Continental, Continental Express, Delta, Northwest, Northwest AirlinK, Southwest, TWA, United, United Express, USAir, USAir Express, Valujet
Daily Arrivals & Departures:	210

## UTILITIES

### Electricity

Company serving **Lebanon and parts of Marion County** - Kentucky Utilities Company

Source of power - Kentucky Utilities Company

For industrial rates contact:

Economic Development Department  
Kentucky Utilities Company  
One Quality Street  
Lexington, Kentucky 40507  
(606) 255-2100

Company serving **most of Marion County** - Inter-County Rural Electric Cooperative Corporation

Source of power - East Kentucky Power

For industrial rates contact:

Industrial Development Department  
East Kentucky Power  
P.O. Box 707  
Winchester, Kentucky 40392-0707  
(606) 744-4812

and/or

Inter-County Rural Electric Cooperative  
Corporation  
1009 Hustonville Road  
P.O. Box 87  
Danville, Kentucky 40423-0087  
(606) 236-4561

### Natural Gas

Company serving **Lebanon** - Western Kentucky Gas Company

Source of supply - Tennessee Gas Pipeline Company

For rates and supplies contact:

Western Kentucky Gas Company  
2401 New Hartford Road  
P.O. Box 866  
Owensboro, Kentucky 42302-0866  
(502) 685-8069

## Public Water Supply

Company serving <b>Lebanon</b> -	Lebanon Water Company 120 South Proctor Knott Avenue Lebanon, Kentucky 40033 (502) 692-2491
Source -	Rolling Fork River and Lebanon Reservoir
Treatment plant capacity-	3,000,000 gallons per day
Average daily consumption -	1,900,000 gallons
Peak daily consumption -	2,300,000 gallons
Storage capacity -	2,300,000 gallons
Water pressure -	35 psi to 175 psi

The Lebanon Water Company plans to expand the treatment plant capacity to 5.2 million gallons per day. Construction is scheduled to begin in the summer of 1996 and be completed in the summer of 1997 at a cost of approximately \$3.8 million.

## Sewerage

Company serving <b>Lebanon</b> -	Lebanon Wastewater Department 118 South Proctor Knott Avenue Lebanon, Kentucky 40033 (502) 692-6272
Design capacity -	3,000,000 gallons per day
Average daily flow -	1,200,000 gallons
Type of treatment -	Secondary
Treated effluent discharged into -	Hardins Creek

The Lebanon Wastewater Department recently completed an expansion of the treatment plant to 3.0 million gallons per day. An expansion of the collector system is underway. The \$6.0 million project includes the installation of 10,000 feet of additional sewer lines.



## CLIMATE

### Marion County

#### Temperature

Normal (30-year record)	54.90 degrees
Average annual 1994	55.40 degrees
Record highest, July 1988 (50-year record)	103.00 degrees
Record lowest, January 1963 (50-year record)	-21.00 degrees
Normal heating degree days (30-year record)	4,783
(Heating degree day totals are the sums of negative departures of average daily temperatures from 65 degrees F.)	

#### Precipitation

Normal (30-year record)	44.55 inches
Mean annual snowfall (30-year record)	15.90 inches
Total precipitation 1994	45.70 inches
Mean number days precipitation (.01 inch or more) (50-year record)	129.70
Mean number days thunderstorms (50-year record)	44.40

#### Prevailing Winds (through 1963)

South

#### Relative Humidity (31-year record)

1 a.m.	78 percent * (30-year record)
7 a.m.	82 percent
1 p.m.	60 percent
7 p.m.	64 percent

**Source:** U.S. Department of Commerce, Environmental Science Services Administration, Climatological Data, 1994. Station of record: Lexington, Kentucky.

## **LOCAL GOVERNMENT**

### **Structure**

Lebanon is governed by a mayor and six council members. The mayor serves a four-year term and the council members are elected to two-year terms. Marion County is governed by a county judge/executive and five magistrates. Each county official is elected to a four-year term.

### **Planning and Zoning**

City agency - Lebanon Planning and Zoning Commission

Zoning enforced - Within city only

Subdivision regulations enforced - Within city and three miles beyond the corporate limits

Local codes enforced - Building and housing

Mandatory state codes enforced - Kentucky Plumbing Code, National

Electric Code, Kentucky Boiler Regulations and Standards, Kentucky

Building Code (modeled after BOCA code)

### **Local Fees and Licenses**

The City of Lebanon levies an occupational license tax of one percent on salaries, wages, commissions and other compensation earned by individuals, and one percent on net profits of sales made within the city for businesses and professions, with a minimum fee of \$25.00.

Marion County levies an occupational license tax of one percent on salaries, wages, commissions and other compensation earned by individuals, and one percent on net profits of businesses and professions.

## **PROPERTY TAXES**

The Kentucky Constitution requires the state to tax all classes of taxable property, and state statutes allow local jurisdictions to tax only a few classes. All locally taxed property is subject to county taxes and school district taxes (either a county school district or an independent school district). Property located inside of city limits may also be subject to city property taxes.

Special local taxing jurisdictions (fire protection districts, watershed districts, and sanitation districts) levy taxes within their operating areas (usually a small portion of community or county).

Property assessments in Kentucky are at 100% fair cash value. Accounts receivable are taxed at 85% of face value.

### **STATE PROPERTY TAX RATES PER \$100 VALUATION**

<u>Selected Classes of Property</u>	<u>1995 State Rate</u>	<u>Local Taxation Permitted</u>
Real Estate	\$0.167	YES
Manufacturing Machinery	0.150	NO
Pollution Control Equipment	0.150	NO
Inventories		
Raw Materials	0.050	NO
Goods in Process	0.050	NO
Finished Goods	0.050	YES
Motor Vehicles	0.450	YES
Other Tangible Personal Property	0.450	YES
Intangibles (Accounts Receivable, Money on Hand)	0.250	NO

### **LOCAL PROPERTY TAX RATES PER \$100 VALUATION, 1995**

<u>Taxing Jurisdiction</u>	<u>Real Estate</u>	<u>Finished Goods &amp; Tangibles</u>	<u>Motor Vehicles</u>
Marion County	\$0.1648	\$0.1993	\$0.1929
School Districts:			
Marion County	0.4600	0.4600	0.5250
Cities:			
Lebanon	0.2140	0.2140	0.2433



## EDUCATION

### Public Schools

#### Marion County

Total Enrollment (Fall, 1995)	2,900
Pupil-Teacher Ratio (1994-95)	15.0-1
Percent High School Graduates to College (1994-95)	46.5
Expenditures Per Pupil (1994-95)	\$4,068.59

The new Lebanon Middle School, a 78,000 square-foot state-of-the-art facility, opened its doors to students in August 1995. It was constructed at a cost of \$7.0 million and houses approximately 350 students in grades 6 through 8.

### Nonpublic Schools

<u>School</u>	<u>Enrollment</u>	<u>Grades</u>
St. Augustine Elementary	365	K-8

## Area Colleges and Universities

<u>Name</u>	<u>Location (Mileage from Lebanon)</u>	<u>Enrollment (Fall, 1995)</u>
Saint Catharine College	Springfield, Kentucky (8)	442
Campbellsville College	Campbellsville, Kentucky (20)	1,366
Centre College	Danville, Kentucky (31)	967
Lindsey Wilson College	Columbia, Kentucky (39)	1,316
Ashbury College	Wilmore, Kentucky (48)	1,206
Elizabethtown Community College	Elizabethtown, Kentucky (51)	3,766
Kentucky State University	Frankfort, Kentucky (58)	2,579
Lexington Community College	Lexington, Kentucky (62)	5,228
Transylvania University	Lexington, Kentucky (62)	923
University of Kentucky	Lexington, Kentucky (62)	24,378
Midway College	Midway, Kentucky (63)	926
Berea College	Berea, Kentucky (65)	1,559
Eastern Kentucky University	Richmond, Kentucky (65)	15,727
Bellarmine College	Louisville, Kentucky (66)	2,935
Jefferson Community College	Louisville, Kentucky (66)	9,273
Spalding University	Louisville, Kentucky (66)	1,342
University of Louisville	Louisville, Kentucky (66)	21,218
Somerset Community College	Somerset, Kentucky (69)	2,673

## VOCATIONAL-TECHNICAL TRAINING

Kentucky Tech schools are operated by the Cabinet for Workforce Development and provide secondary (Sec) and postsecondary (P/S) vocational-technical training.

<u>Kentucky Tech Schools</u>	<u>Location (Mileage from Lebanon)</u>	<u>Number of Program Offerings</u>	<u>Cumulative Enrollment 1994-1995</u>	<u>Approximate Number Completing Long-Term Programs Annually</u>
Marion County Area Technology Center	Lebanon	7	<u>Sec</u> <u>P/S</u> 299 4	36
Elizabethtown Regional Technology Center	Elizabethtown (51)	23	<u>Sec</u> <u>P/S</u> 26 663	162

### Customized Training

The Elizabethtown Industrial Foundation Training Consortium is a partnership of local companies, government, civic, and education representatives who are dedicated to achieving training excellence by planning, conducting, and evaluating training for people from local business and industry to ensure continuous improvement. The partnership cooperatively joins Elizabethtown Community College and Elizabethtown Regional Technology Center.

The Kentucky Tech system, through its Training and Development Coordinators, will provide technical assistance and will identify and develop low-cost customized training programs and services for both established and prospective businesses. Businesses needing customized training should contact a Training and Development Coordinator located at the Kentucky Tech Northwest Region office in Elizabethtown (502) 595-4136.

### Assessment Services

Kentucky Tech Career Connections offers to business, education, and government agencies customized assessment in career inventories, interest inventories, pre-hire assessment, psychomotor skills, and academic potential. A Career Connections Assessment Center is located on the campus of the Elizabethtown Regional Technology Center (502) 759-2361.

### Articulation

Articulation agreements developed between various colleges and universities and the Kentucky Tech system allow students to earn credits to be used when matriculating to degree programs at a college or university. Marion County Area Technology Center and Saint Catharine College have an articulation agreement in auto body repair, automotive technology, carpentry, machine tool technology, and office technology. Elizabethtown Regional Technology Center has articulation agreements with Elizabethtown Community College.



### Adult Education Services

Adult education programs are available to adults who want to develop new skills, improve basic skills, or earn a high school equivalency diploma. In Lebanon, adult literacy and adult basic education are provided through the Marion County Board of Education and Marion Community Education Center.

### Area Technology Center

The Marion County Area Technology Center has expanded its program to reach more residents of Marion County. The school has recently added programs in the following fields: computer courses, machine technology, welding, blueprint reading, keyboarding, accounting, and first-aid training.

### Tech Prep

Tech Prep is a combined secondary and postsecondary program of studies that leads to an associate degree or diploma in a vocational-technical field. The Elizabethtown Regional Technology Center offers programs in the areas of automotive technology, carpentry, computer-aided drafting, electrical technology, electronics technology, food service technology, and welding.

### Bluegrass State Skills Corporation

The Bluegrass State Skills Corporation, an independent public corporation created and funded by the Kentucky General Assembly, provides programs of skills training to meet the needs of business and industry from entry level to advanced training, and from upgrading present employees to retraining experienced workers.

The Bluegrass State Skills Corporation is a major source for skills training assistance for a new or existing company. The Corporation works in partnership with other employment and job training resources and programs, as well as Kentucky's economic development activities, to package a program customized to meet the specific needs of a company.

## OTHER LOCAL FACILITIES

### Local Medical Personnel

Physicians - 8  
Dentists - 4

### Hospitals

<u>General Hospital</u>	<u>Location</u>	<u>Beds</u>
Spring View Medical Center	Lebanon	75

Medical staff - 55 physicians, 41 registered nurses, and 10 licensed practical nurses

Spring View Medical Center, serving Lebanon and the surrounding area, has completed construction on a new ultra modern facility at a cost of approximately \$15 million.

### Other Medical Facilities

Caretenders  
Communicare Clinic  
Hospice of Central Kentucky  
Marion County Home Health Agency  
Cedars of Lebanon Nursing Home - 94 beds  
Spring View Nursing Home - 38 beds  
Marion County Ambulance Emergency Service  
Lincoln Trail District Home Health  
Agency/Marion County Branch  
Marion County Health Department

### Bank and Savings & Loan Associations

Citizens National Bank  
Community Trust Bank  
Farmers National Bank  
Great Financial Bank  
Peoples Bank  
Star Bank NA, Kentucky

### Newspapers

The Lebanon Enterprise (weekly)

### Telephone Service

GTE South, Inc.

## RECREATION

### Local

Public recreation facilities in or near Lebanon include eight tennis courts, one park, four playgrounds, one year-round covered swimming pool, three baseball diamonds, two football fields, and a 3,400-foot jogging track.

Sportsman's Lake, near the Lebanon city limits, is a public recreational area owned by the Commonwealth of Kentucky and operated by Marion County. The lake and surrounding area offers a clubhouse, a playground, facilities for fishing, picnicking, and archery.

The City of Lebanon has started construction on an Aquatic Center which has a 25 meter by 25 yard enclosed swimming pool, a wading pool, and a sun deck. Plans also include a 100-foot slide and related slide pool.

Set in the knobs of central Kentucky, the Cecil L. Gorley Nature Trail covers 3.1 miles around Fagan Branch Reservoir. A moderate hike of approximately two hours duration takes the hiker through typical knob and woodland terrain and across more than forty log foot bridges, some of which cross the reservoir backwater area. Wildlife and forest fauna are abundant. A self-guiding nature trail is under construction.

The Lebanon Country Club, a privately-owned facility, offers a nine-hole golf course, a swimming pool, and tennis courts.

Makers Mark Distillery, located between Lebanon and Loretto, is Kentucky's oldest operating mill and distillery on its original site. Tours are offered Monday through Friday. Facilities include a visitor/reception house which features artifacts of old time distilling and quarehouse, the equivalent of the modern package store. The Makers Mark Distillery is listed on the National Register of Historic Places and has been named a Kentucky Landmark.

Lebanon is the home of the annual Marion County Ham Days, held the last full weekend in September, and the Marion County Fair, held each year in July.

A fitness center is located at the Marion County High School and is fully equipped with the latest exercise equipment. The facility is open to the public during the evenings and used by the high school students daily.

### Area (Within 50 miles)

Abraham Lincoln Birthplace National  
Historic Site  
Bernheim Forest Arboretum and  
Nature Center  
Constitution Square State Historic Site  
Green River Lake State Park  
Herrington Lake  
Isaac Shelby Cemetery State Historic Site  
Lincoln Homestead State Park  
My Old Kentucky Home State Park  
Old Fort Harrod State Park  
Taylorsville Lake State Park  
William Whitley House State Historic Site