

1-2000

Industrial Resources: McCreary County

Kentucky Library Research Collections
Western Kentucky University, spcol@wku.edu

Follow this and additional works at: https://digitalcommons.wku.edu/mccreary_cty



Part of the [Business Administration, Management, and Operations Commons](#), [Growth and Development Commons](#), and the [Infrastructure Commons](#)

Recommended Citation

Kentucky Library Research Collections, "Industrial Resources: McCreary County" (2000). *McCreary County*. Paper 1.
https://digitalcommons.wku.edu/mccreary_cty/1

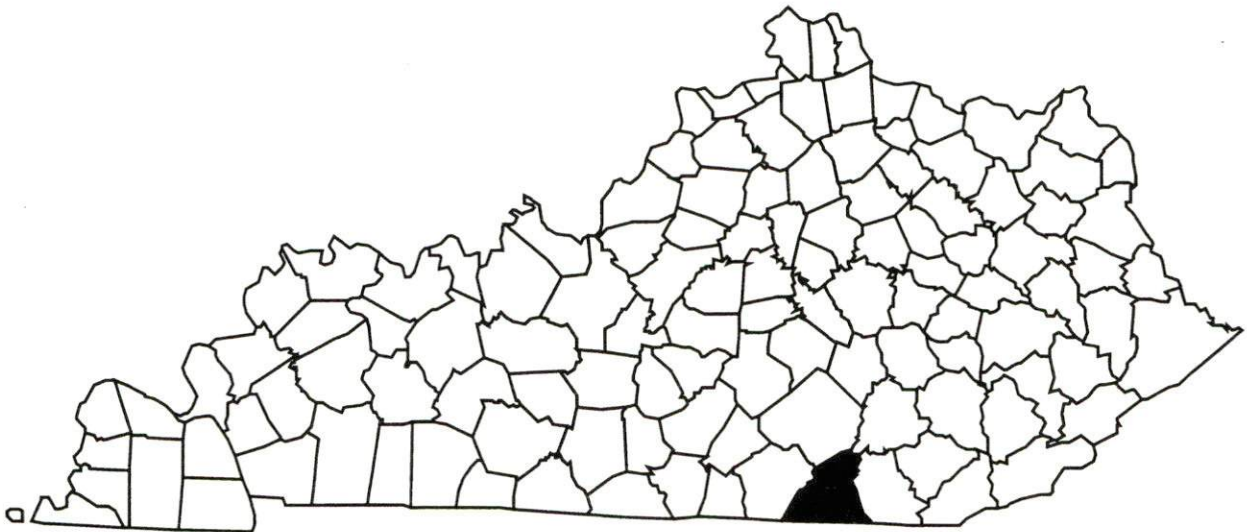
This Report is brought to you for free and open access by TopSCHOLAR®. It has been accepted for inclusion in McCreary County by an authorized administrator of TopSCHOLAR®. For more information, please contact topscholar@wku.edu.

Kentucky

Resources For Economic Development

McCreary County

January, 2000



Prepared by
Kentucky Cabinet for Economic Development
Division of Research
in cooperation with
McCreary County Deputy Judge Executive
P. O. Box 579
Whitley City, KY 42653
Phone: 606-376-2413 Fax: 606-376-9499

Kentucky Cabinet for Economic Development
Division of Research
500 Mero Street
2300 Capital Plaza Tower
Frankfort, KY 40601
Telephone: (502) 564-4886
Fax: (502) 564-3256
Email: econdev@mail.state.ky.us

Cost of printing paid from state funds.

TABLE OF CONTENTS

	Page
MCCREARY COUNTY, KENTUCKY – A RESOURCE PROFILE	1
LABOR MARKET STATISTICS	3
Population	3
Population Projections	3
Estimated Labor Supply	3
Labor Force Characteristics of Residents, 1998	4
Work Force Commuting Patterns, 1990	4
Selected Components of Nonagricultural Employment by Place of Work, 1997	4
Per Capita Personal Income	6
Average Placement Wages	6
Average Weekly Wages by Industry by Place of Work, 1998	7
EXISTING INDUSTRY	8
McCreary County Manufacturing Firms, Their Products and Employment	8
Recent Industrial Developments	9
Major McCreary County Supportive/Service Employers	9
Labor Organizations in McCreary County	9
Selected Industrial Services – Within 50 Miles of Stearns	10
TRANSPORTATION	11
Highways	11
Truck Service	11
Rail	13
Air	13
UTILITIES	14
Electricity	14
Natural Gas	15
Public Water Supply	15
Sewerage	15
CLIMATE	16
LOCAL GOVERNMENT	17
Structure	17
Planning and Zoning	17
Sales and Use Tax	17
State and Local Property Taxes	17
EDUCATION	19
Primary and Secondary Schools	19
Colleges and Technical Schools	20
OTHER LOCAL FACILITIES	22
RECREATION	23
APPENDIX - DEFINITIONS	25

MCCREARY COUNTY, KENTUCKY – A RESOURCE PROFILE

McCreary County covers a land area of 428 square miles in the Eastern Coal Fields Region of Kentucky. The county is situated in the southern portion of the Daniel Boone National Forest. McCreary County had a 1998 estimated population of 16,659 persons. Whitley City, the county seat, is about three miles north of Stearns, and Pine Knot is approximately five miles north of Stearns. Stearns is 80 miles northwest of Knoxville, Tennessee; 157 miles southeast of Louisville, Kentucky; 122 miles south of Lexington; and 199 miles south of Cincinnati, Ohio. McCreary County is a federally designated "Enterprise Community."

The Economic Framework – McCreary County firms employed 3,094 people in 1997. Contract construction firms provided 12 jobs; manufacturing firms in the county reported 1,039 employees; wholesale and retail trade provided 469 jobs; 478 were employed in the service industry; and state and local government accounted for 871 jobs.

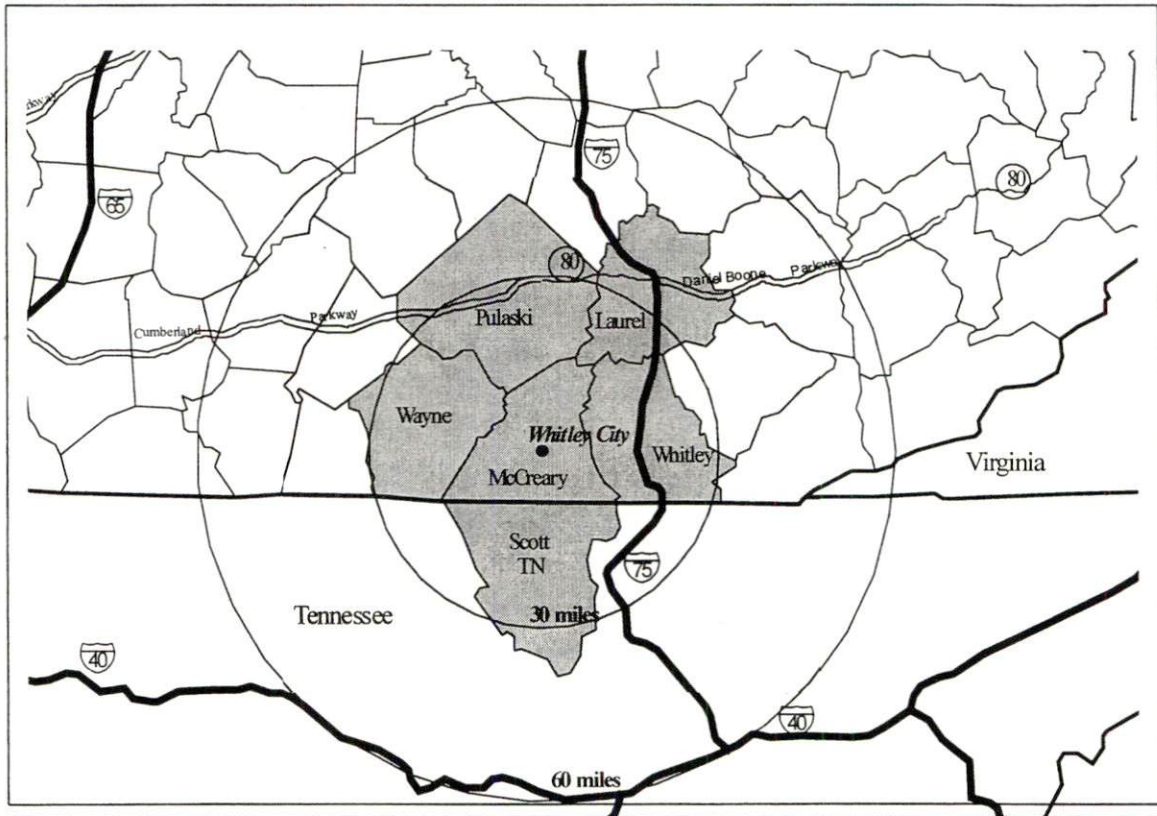
Labor Supply – There is a current estimated labor supply of 36,002 persons available for industrial jobs in the labor market area. In addition, from 2000 through 2004, approximately 15,794 young persons in the labor market area will become 18 years of age and potentially available for industrial jobs.

Transportation – Whitley City, Stearns, and Pine Knot are directly served by U.S. Highway 27. Stearns is also served by Kentucky Highways 92 and 1651. Interstate 75 may be accessed 21 miles east of Pine Knot via Kentucky 92. The Cumberland Parkway is accessible 31 miles north of Whitley City via U.S. Highway 27. Thirteen common carrier trucking companies provide interstate and/or intrastate service to McCreary County. The Norfolk Southern Corporation provides rail service to McCreary County. Stearns is also served by the Kentucky and Tennessee Railway. The nearest scheduled commercial airline service is available at McGhee-Tyson Airport near Knoxville, Tennessee, 102 miles southeast of Stearns; and at Blue Grass Airport near Lexington, Kentucky, 129 miles north of Stearns. The McCreary County Airport, in Pine Knot provides facilities for small aircraft.

Power and Fuel – Kentucky Utilities Company provides electricity to Whitley City, Stearns, and Pine Knot; plus a small portion of McCreary County. A major portion of the county is served by the South Kentucky Rural Electric Cooperative Corporation. Cumberland Valley Electric also serves a small portion of southeastern McCreary County. Natural gas is available in Pine Knot and Whitley City. Construction of a natural gas line to Stearns is scheduled for completion in Spring, 2000.

Education – Primary and secondary education is provided by the McCreary County School System. Nine colleges and universities are within 60 miles of Stearns. An associate's degree is offered at the Somerset Community College McCreary Center in Whitley City. Secondary technical training is available at the Wayne County Area Technology Center (ATC) in Monticello, 29 miles northwest of Stearns and at the Corbin ATC, 37 miles northeast. Post-secondary technical education is available at the Somerset Technical College McCreary Center in Whitley City.

Labor Market Area Maps



Note: To obtain detailed topographical and general highway maps contact Maps and Publications at 502-564-4715, or for industrial site maps contact the Site Evaluation Division at 502-564-7140.

LABOR MARKET STATISTICS

The McCreary County labor market area includes McCreary County and the following additional counties: Laurel; Pulaski; Wayne; Whitley; and Scott, TN.

Population

	<u>1980</u>	<u>1990</u>	<u>1995*</u>	<u>1998*</u>
Labor Market Area	170,096	177,682	191,725	198,776
McCreary County	15,634	15,603	16,507	16,659
Stearns	1,557	1,550	N/A	N/A
Pine Knot	1,389	1,549	N/A	N/A
Whitley City	1,683	1,133	N/A	N/A

Note: * Population estimates. N/A – Data not available.

Source: U.S. Department of Commerce, Bureau of the Census.

Population Projections

	<u>2000</u>	<u>2010</u>	<u>2020</u>
Labor Market Area	203,287	219,724	230,614
McCreary County	16,955	17,959	18,625

Source: University of Louisville, Urban Studies Center, State Data Center. Out-of-state counties within the labor market area computed by the Kentucky Cabinet for Economic Development.

Estimated Labor Supply

	<u>Available Labor, 1998</u>			<u>Future Labor</u>	
	<u>Total</u>	<u>Unemployed</u>	<u>Potential Labor Supply</u>	<u>Under-employed</u>	<u>Becoming 18 years of age 2000 through 2004</u>
Labor Market Area	36,002	5,451	4,595	25,957	15,794
McCreary County	1,574	526	426	622	1,498

Note: Unemployed – people not working but actively seeking work. Potential Labor Supply – represents the number of persons not in the labor force, but would like a job (based on national estimates). Underemployed – people employed in wholesale/retail trade and non-professional services. See Appendix for further explanation.

Sources: U.S. Department of Labor, Bureau of Labor Statistics. U.S. Department of Commerce, Bureau of the Census. Kentucky Cabinet for Economic Development, Future Labor Supply Becoming 18 Years of Age, 1999 through 2003.

Labor Force Characteristics of Residents, 1998

	<u>McCreary County</u>	<u>Labor Market Area</u>
Civilian Labor Force	6,210	84,802
Employed	5,684	79,351
Unemployed	526	5,451
Unemployment Rate (%)	8.5	6.4

Source: U.S. Department of Labor, Bureau of Labor Statistics.

Work Force Commuting Patterns, 1990

Workers commuting into McCreary County	299
Workers commuting out of McCreary County	1,343
Workers residing and working in McCreary County	2,496

Source: University of Louisville, State Data Center.

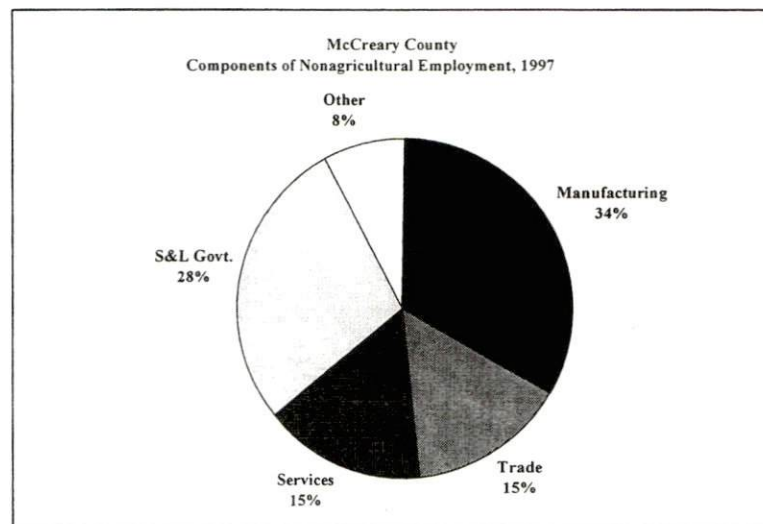
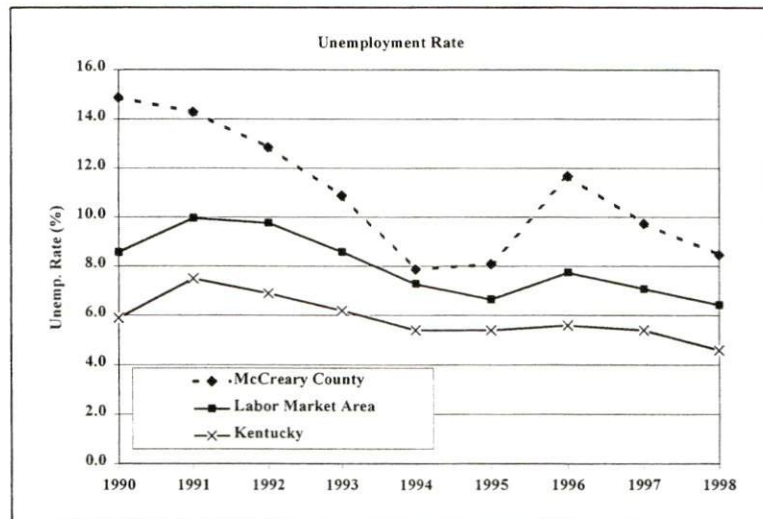
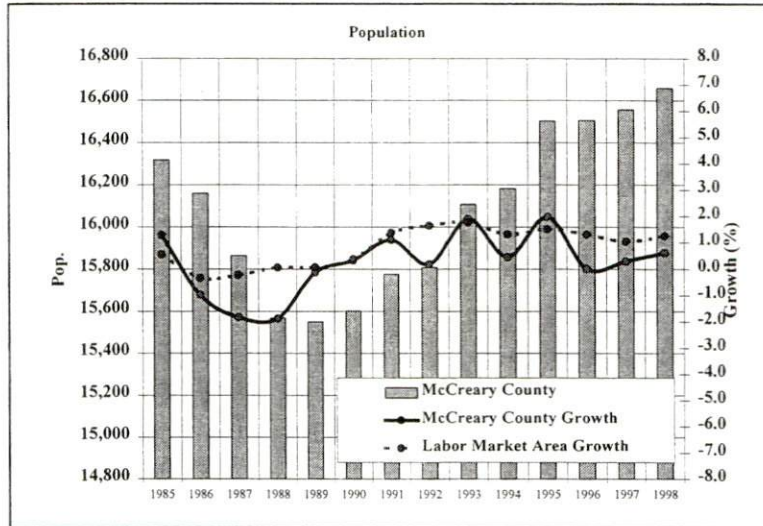
Selected Components of Nonagricultural Employment by Place of Work, 1997

	<u>McCreary County</u>	<u>Labor Market Area</u>
All Industries	3,094	66,196
Mining & Quarrying	N/A	520
Contract Construction	12	2,763
Manufacturing	1,039	15,108
Transportation & Public Utilities	126	2,870
Wholesale & Retail Trade	469	18,682
Finance, Insurance, & Real Estate	93	2,109
Services	478	13,444
State & Local Government	871	10,340
Other	0	342

Note: Excludes domestic workers, railway workers, certain nonprofit corporations, majority of federal government workers, and self-employed workers. N/A – Data not available.

Source: Kentucky Workforce Development Cabinet, Average Monthly Workers Covered by Kentucky Unemployment Insurance Law, 1997. Out-of-state counties within the labor market area provided by the respective states' departments for employment services.

Selected Charts



Per Capita Personal Income

	<u>1993</u>	<u>1997</u>	<u>Percent Change (1993-1997)</u>
McCreary County	\$10,039	\$11,880	18.3%
Kentucky	\$17,309	\$20,570	18.8%
U.S.	\$21,368	\$25,288	18.3%
Labor Market Area Range	\$10,039 - \$14,496	\$11,880 - \$17,470	-

Source: U.S. Department of Commerce, Bureau of Economic Analysis, 1998.

Average Placement Wages

The Kentucky Department for Employment Services local office in Somerset serves McCreary County. The focus of the following data is on job placements made by the Somerset local office and may therefore be used as an indicator of the wages which employers in the area pay new employees. During the twelve months ended on June 30, 1998, the local employment office filled McCreary County job openings in various occupational categories. The average hourly wage for selected occupational categories were:

	<u>Number of Placements</u>	<u>Average Wage (\$)</u>
All Occupations	3,084	5.81
Professional, Technical & Managerial	39	7.26
Clerical	338	4.95
Sales	143	5.32
Domestic	17	4.65
Services (excluding domestic)	469	4.87
Agricultural, Fishery, Forestry, etc.	104	6.50
Processing	43	5.43
Machine Trades	249	6.63
Bench Work	1,093	6.08
Structural	205	6.40
Motor Freight & Transportation	74	5.72
Packaging & Materials Handling	307	6.03
Other	3	8.95

Note: Occupational categories are taken from the Dictionary of Occupational Titles published by the U.S. Department of Labor. The Somerset local office serves Adair, Casey, Clinton, Cumberland, McCreary, Pulas Counties.

Source: Kentucky Workforce Development Cabinet, Department for Employment Services.

Average Weekly Wages by Industry by Place of Work, 1998

	<u>McCreary County</u>	<u>Kentucky (Statewide)</u>	<u>Tennessee</u>	<u>Virginia</u>
All Industries	\$345.86	\$512.00	\$546.00	\$595.00
Mining & Quarrying	N/A	808.00	896.00	799.00
Contract Construction	227.06	543.00	585.00	567.00
Manufacturing	304.46	666.00	641.00	670.00
Transportation & Public Utilities	522.64	686.00	674.00	842.00
Wholesale & Retail Trade	256.59	357.00	413.00	416.00
Finance, Insurance, & Real Estate	451.95	652.00	757.00	815.00
Services	326.21	462.00	521.00	628.00
State & Local Government	430.27	494.00	511.00	551.00
	<u>Indiana</u>	<u>Ohio</u>	<u>Illinois</u>	<u>U.S.</u>
All Industries	\$560.00	\$579.00	\$668.00	\$610.00
Mining & Quarrying	883.00	813.00	910.00	1,000.00
Contract Construction	642.00	650.00	804.00	641.00
Manufacturing	772.00	801.00	816.00	770.00
Transportation & Public Utilities	662.00	698.00	798.00	756.00
Wholesale & Retail Trade	371.00	409.00	479.00	435.00
Finance, Insurance, & Real Estate	686.00	736.00	1,023.00	935.00
Services	476.00	510.00	608.00	577.00
State & Local Government	526.00	586.00	638.00	598.00

Note: The average weekly wage for each category includes salaries and wages of all persons working for that type of business. For example, the manufacturing category includes both production workers and administrative personnel. Domestic workers, railway workers, certain nonprofit corporations, majority of federal government workers, and self-employed workers are excluded. Wages for U.S. and surrounding states rounded to nearest dollar. N/A – Data not available.

Sources: Kentucky Workforce Development Cabinet, Average Weekly Wages of Workers Covered by Kentucky Unemployment Insurance Law, 1998. U.S. Department of Labor, Bureau of Labor Statistics, Employment and Wages, Annual Averages, 1998, December 1999.

EXISTING INDUSTRY

McCreary County Manufacturing Firms, Their Products and Employment

<u>Firm</u>	<u>Product(s)</u>	<u>1999 Emp.</u>	<u>Date Established</u>
<u>Pine Knot</u>			
Academy Broadway Corp.	Sleeping bags	120	1985
Foothills Meats	Custom meat processing	6	1999
McCreary County Hardwood, Inc.	Cross ties & hardwood lumber	19	1988
Perkins Meat Processing	Custom meat processing	5	1992
Pine Knot Lumber, Inc.	Grade, softwood, dimension & finished lumber & millwork	30	1978
<u>Stearns</u>			
American Bag Corp.	Automotive air bags	275	1984
Anderson Tool and Machine Shop	Industrial machining	2	N/A
Lesportsac, Inc.	Softside luggage & sport totes & bags	250	1998
Outdoor Venture Corp.	Military tent liners & covers	100	1972
Roundtree Welding	Industrial welding and fabrication	10	N/A
Shelter-Pro LLC	Hunting blinds & clothing	0	N/A
<u>Strunk</u>			
C & P Lumber Co.	Railroad ties	9	1992
King's Cabinet & Machine, Co.	Machine shop: machinery repairing, custom wooden kitchen, bath, entertainment & household cabinets	3	N/A
<u>Whitley City</u>			
McCreary County Ready Mix	Ready-mixed concrete & blocks	3	1982
McCreary County Record	Newspaper publishing & offset printing	5	1919
Monroe Mills	Hardwood & softwood lumber sawing; pallet material	15	1991
Rapids Silkscreen & Trophies	Fabric screen printing, vinyl lettered signs, engraving service & advertising specialties	2	1987

Note: N/A - Data not available.

Sources: Kentucky Directory of Manufacturers published by Harris InfoSource in cooperation with the Kentucky Cabinet for Economic Development, Division of Research. McCreary County Government.

Recent Industrial Developments

In recent years, McCreary County has experienced significant industrial growth. Academy Broadway Corporation has increased employment on a consistent basis, announcing an expansion in 1999. Outdoor Venture Corporation is in the process of moving to a new facility and creating about 50 new jobs. LeSportsac, Inc. has also acquired another facility and plans an expansion.

Major McCreary County Supportive/Service Employers

<u>Name of Business/Firm</u>	<u>Type of Business</u>	<u>Employment</u>
D. H. Campbell, Inc.	Heavy hauling	30
K & T Railroad	Light intermodal rail service	8
Medex	Data processing/billing	10

Source: McCreary County Government.

Labor Organizations in McCreary County

Union of Needletrades, Industrial and Textile Employees (UNITE)

Source: Kentucky Cabinet for Economic Development, Division of Research.

Selected Industrial Services – Within 50 Miles of Stearns

Miles	City	Custom Plastics Producers	Electric Motor Repair	Heat Treating Facilities	Industrial Waste Removal	Machine Shops, Tool & Die	Metal Castings	Metal Finishers	Metal Service Centers	Mill- wrights & Riggers
17	Williamsburg					X				
26	Corbin					X			X	
28	Somerset		X		X	X				
42	Middlesboro		X				X			

Note: Miles are calculated as the straight-line distance from city center to city center; not road miles.

Source: Kentucky Cabinet for Economic Development, Division of Research.

TRANSPORTATION

Highways

Whitley City, Pine Knot, and Stearns are served directly by U.S. 27, a AAA-rated (80,000-pound gross load limit) trucking highway. Stearns and Pine Knot are also served by Kentucky 92, a AA-rated trucking highway from U.S. 27 west to Monticello. Kentucky 92 is a AAA-rated (62,000-pound gross load limit) trucking highway between U.S. 27, near Pine Knot, and Interstate 75, 21 miles east. Kentucky 90, another AA-rated trucking highway, serves the northern portion of the county. The Cumberland Parkway, an east-west multi-lane toll road, is accessible 31 miles north of Whitley City via U.S. 27. Interstate 75, a major north-south corridor is accessible 27 miles east of Whitley City via U.S. 27 and Kentucky 92.

Highway Miles from Stearns, Kentucky to Selected Market Centers

<u>City</u>	<u>Highway Miles</u>	<u>City</u>	<u>Highway Miles</u>
Atlanta, GA	279	Indianapolis, IN	269
Baltimore, MD	602	Kansas City, MO	670
Birmingham, AL	324	Knoxville, TN	80
Charleston, WV	269	Lexington, KY	122
Chicago, IL	450	Louisville, KY	157
Cincinnati, OH	199	Minneapolis, MN	861
Cleveland, OH	450	Nashville, TN	177
Columbia, SC	340	New Orleans, LA	668
Columbus, OH	306	New York, NY	785
Dallas, TX	841	Pittsburgh, PA	488
Des Moines, IA	746	Raleigh, NC	438
Detroit, MI	462	Richmond, VA	513
Evansville, IN	259	St. Louis, MO	421
Huntington, WV	221	Tallahassee, FL	550

Note: Mileage computations are via the best interstate or primary highways, not necessarily the most direct route of travel.

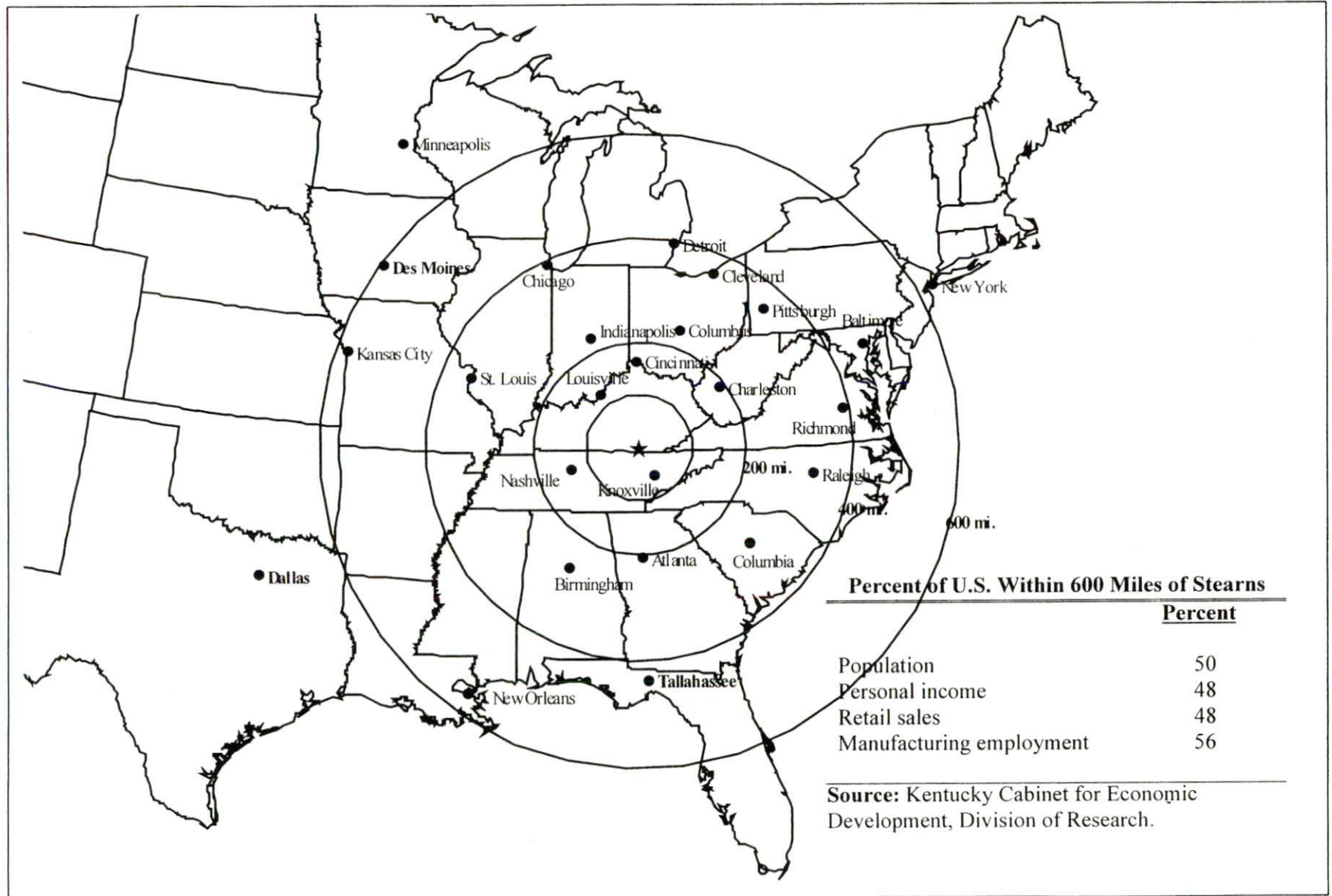
Source: AAA Map 'n' Go, DeLORME, 1998.

Truck Service

Thirteen trucking companies provide interstate and/or intrastate service to McCreary County. One trucking firm specializes in heavy equipment hauling.

Source: American Motor Carrier Directory, 2000 Edition.

Selected Market Centers Map



Rail

Main line rail service is provided to Whitley City, Stearns, and Pine Knot by the Norfolk Southern Corporation. Stearns is served by the Kentucky and Tennessee Railway which provides limited intermodal facilities to support local business and industry. The nearest major intermodal facility is maintained by Norfolk Southern at Knoxville, 80 miles south of Stearns.

For details on routing, schedules, rates, and services contact:

Industrial Development Manager
Norfolk Southern Corporation
The Tower Suite 2904
611 Commerce Street
Nashville, TN 37203
(615) 254-3398

Air

Local

McCreary County Airport

Location: Pine Knot, KY
Distance from Stearns: 4 miles southeast
Phone: (606) 354-9192
Number of runways: 1
Length and type of longest runway: 3,000 feet (paved)

Commercial/International

McGhee Tyson Airport

Location: Knoxville, TN
Distance from Stearns: 102 miles southeast
Phone: (423) 970-2773
Air service: AirTrans, Comair-Delta Connections, Continental Express, Corporate Express, Delta, Lone Star, Northwest, Northwest Airlink, TWA, United, United Express, US Airways, US Airways Express
Daily arrivals & departures: 98

Blue Grass Airport

Location: Lexington, KY
Distance from Stearns: 129 miles north
Phone: (606) 254-9336
Air service: ASA, Comair, Continental Express, Delta, Northwest Airlink, TW Express, United Express, US Airways
Daily arrivals & departures: 192

UTILITIES

Electricity

Service area: **a major portion of McCreary County**
Company: South Kentucky Rural Electric Cooperative Corporation
Source of power: East Kentucky Power Cooperative
For industrial rates contact:

South Kentucky Rural Electric Cooperative Corporation
925-929 North Main Street
P.O. Box 910
Somerset, KY 42502
(606) 678-4121

and/or

East Kentucky Power Cooperative
Industrial Development Department
4775 Lexington Road
P.O. Box 707
Winchester, KY 40391
(606) 744-4812

Service area: **a small portion of southeastern McCreary County**
Company: Cumberland Valley Electric
Source of power: East Kentucky Power Cooperative
For industrial rates contact:

Cumberland Valley Electric
Highway 25E
Gray, KY 40734
(606) 528-2677

and/or

East Kentucky Power Cooperative
Industrial Development Department
4775 Lexington Road
P.O. Box 707
Winchester, KY 40391
(606) 744-4812

Service area: **Whitley City, Stearns, Pine Knot, and a small portion of central McCreary County**
Company: Kentucky Utilities Company
Source of power: Kentucky Utilities Company
For industrial rates contact:

Kentucky Utilities Company
Economic Development Department
One Quality Street
Lexington, KY 40507
(606) 255-2100

Natural Gas

Service area:	Pine Knot, Whitley City, and Stearns
Company:	Citi Power LLC
Source of supply:	Citi Power LLC
For rates and supplies contact:	Citi Power LLC P.O. Box 1309 Whitley City, KY 42653 (606) 376-8373

Public Water Supply

Service area:	McCreary County
Company:	McCreary County Water District U.S. 27, P.O. Box 488 Whitley City, KY 42653 (606) 376-2540

Treatment facilities information:	
Source of raw water:	Laurel Creek Reservoir
Treatment plant capacity:	1,500,000 gallons per day
Average daily consumption:	1,200,000 gallons per day
Peak daily consumption:	1,300,000 gallons per day
Storage capacity:	1,300,000 gallons per day
Water pressure:	35 psi to 145 psi

Improvements:	A major expansion of the water treatment plant is scheduled for completion in 2003 at a cost of approximately \$11 million. The project will increase capacity by 2.0 million gallons per day. The source of the new water supply is Lake Cumberland.
---------------	---

Sewerage

Service area:	McCreary County (portions)
Company:	McCreary County Water District/Sewer District U.S. Highway 27 South P.O. Box 488 Whitley City, KY 42653 (606) 376-2540

Design capacity:	200,000 gallons per day
Average daily flow:	80,688 gallons per day
Type of treatment:	Primary
Treated effluent discharged into:	Bridgefork Creek

CLIMATE

McCreary County

Temperature

Normal (128-year record)	58.8 degrees
Average annual, 1998	61.0 degrees
Record highest, September 1954 (57-year record)	103 degrees
Record lowest, January 1985 (57-year record)	-24 degrees
Normal heating degree days (30-year record)	3,937
Normal cooling degree days (30-year record)	1,266

Precipitation

Normal (30-year record)	47.14 inches
Mean annual snowfall (30-year record)	13.4 inches
Total precipitation, 1998	53.90 inches
Mean number days precipitation (0.01 inch or more) (30-year record)	126.2
Mean number days thunderstorms (56-year record)	47.0

Prevailing Winds (25-year record)

Southwest

Relative Humidity (30-year record)

1 a.m.	81 percent
7 a.m.	85 percent
1 p.m.	59 percent
7 p.m.	63 percent

Notes: Heating degree day totals are the sums of negative departures of average daily temperatures from 65 degrees F. Cooling degree day totals are the sums of positive departures of average daily temperatures from 65 degrees F.

Source: U.S. Department of Commerce, National Climatic Data Center, Local Climatological Data, 1998.
Station of record: Knoxville, Tennessee.

LOCAL GOVERNMENT

Structure

The communities of Parkers Lake, Pine Knot, Smithtown, Stearns, and Whitley City are unincorporated urban areas. McCreary County is governed by a county judge/executive and four magistrates. Each county official serves a four-year term.

Planning and Zoning

There are no planning and zoning commissions in McCreary County at the present time.

Mandatory state codes enforced - Kentucky Plumbing Code, National Electric Code, Kentucky Boiler Regulations and Standards, Kentucky Building Code (modeled after BOCA code)

Sales and Use Tax

A state sales and use tax is levied at the rate of 6.0% on the purchase or lease price of taxable goods and on utility services. Local sales taxes are not levied in Kentucky.

State and Local Property Taxes

The Kentucky Constitution requires the state to tax all classes of taxable property, and state statutes allow local jurisdictions to tax only a few classes. All locally taxed property is subject to county taxes and school district taxes (either a county school district or an independent school district). Property assessments in Kentucky are at 100% fair cash value. Accounts receivable are taxed at 85% of face value. Special local taxing jurisdictions (fire protection districts, watershed districts, and sanitation districts) levy taxes within their operating areas (usually a small portion of community or county).

State Property Tax Rates Per \$100 Valuation

<u>Selected Classes of Property</u>	<u>State Rate, 1998</u>	<u>Local Taxation Permitted</u>
Real Estate	\$0.153	Yes
Manufacturing Machinery	0.150	No
Pollution Control Equipment	0.150	No
Inventories:		
Raw Materials	0.050	No
Goods in Process	0.050	No
Finished Goods	0.050	Yes
Motor Vehicles	0.450	Yes
Other Tangible Personal Property	0.450	Yes
Intangibles (Accounts Receivable, Money on Hand)	0.250	No

Source: Property Tax Rates 1998, Kentucky Revenue Cabinet, Department of Property Valuation.

Local Property Tax Rates Per \$100 Valuation, 1998

<u>Taxing Jurisdiction</u>	<u>Real Estate</u>	<u>Finished Goods & Tangibles</u>	<u>Motor Vehicles</u>
<u>County</u>			
McCreary County	0.2550	0.2640	0.3198
<u>Cities</u>			
Whitley City	0.0000	0.0000	0.0000
<u>School District</u>			
McCreary County	0.4210	0.4210	0.3000

Source: Property Tax Rates 1998, Kentucky Revenue Cabinet, Department of Property Valuation.

EDUCATION

Primary and Secondary Schools

Public School District Enrollments and Expenditures, 1996-97

	<u>Total Enrollment</u>	<u>Expenditures Per Pupil</u>	<u>Pupil to Teacher Ratio</u>
McCreary County	3,570	6,844	16.8

Source: Kentucky Department of Education, Office of Curriculum, Assessment, and Accountability.

Transition to Adult Life of High School Graduates, 1996-97

<u>County-wide</u>	<u>Number of Graduates</u>	<u>Percent of Total Graduates (%)</u>
Total High School Graduates	194	
To College	66	34.0
To Vocational/Technical School	3	1.5
To Workforce	68	35.1
To Work & School	27	13.9
To Military	2	1.0
Other	28	14.4

Source: Kentucky Department of Education, Office of Curriculum, Assessment, and Accountability.

Nonpublic Schools, 1998-1999

	<u>Enrollment</u>	<u>Grades</u>
Beulah Mountain Christian Academy	22	K-12
Pine Knot Job Corps Center	224	9-Adult. Ed.
South Fork Christian Academy	65	K-12

Source: Kentucky Schools Directory 1999-2000, Kentucky Department of Education.

Colleges and Technical Schools

Area Colleges and Universities Within 60 Miles of Stearns

<u>Miles</u>	<u>Institution</u>	<u>Location</u>	<u>Enrollment (Fall 1997)</u>
2	Somerset Comm. College McCreary Center	Whitley City	300
17	Cumberland College	Williamsburg	1,691
27	Roane State Comm. College, Scott Co. Campus (out-of-state tuition waived for McCreary Co. residents)	Huntsville, TN	400
28	Somerset Community College	Somerset	2,558
35	Union College	Barbourville	1,011
47	Lincoln Memorial University	Harrogate, TN	2,003
54	Lindsey Wilson College	Columbia	1,425
58	Knoxville College	Knoxville, TN	434
58	University of Tennessee, at Knoxville	Knoxville, TN	24,578
Total Enrollment			34,400

Note: Miles are calculated as the straight-line distance from Stearns, not road miles.

Source: Kentucky Council on Higher Education.

Kentucky Technical Schools Within 60 Miles of Stearns

<u>Miles</u>	<u>Institution</u>	<u>Location</u>	<u>Enrollment (1997-98)</u>		
			<u>Sec</u>	<u>P/S</u>	<u>Total</u>
2	Somerset Technical College McCreary Center	Whitley City	N/A	N/A	N/A
23	Wayne County ATC	Monticello	749	0	749
26	Corbin ATC	Corbin	265	44	309
28	Somerset Technical College	Somerset	2	711	713
35	Knox County ATC	Barbourville	371	32	403
37	Clinton County ATC	Albany	516	29	545
37	Laurel County Technical College	London	232	399	631
41	Russell County ATC	Russell Springs	414	0	414
43	Bell County ATC	Pineville	321	0	321
43	Laurel Co. Tech. Col. Cumberland Valley Campus	Pineville	0	171	171
47	Rockcastle County ATC	Mount Vernon	367	73	440
50	Casey County ATC	Liberty	709	0	709
50	Clay County ATC	Manchester	248	35	283
Total Enrollment			4,194	1,494	5,688

Notes: Kentucky Tech secondary schools (Sec), called area technology centers (ATC), are operated by the Cabinet for Workforce Development and the post-secondary schools (P/S), called technical colleges, are governed by the Kentucky Community and Technical College System (KCTCS). Adult courses may be offered at some secondary technical schools. Miles are calculated as the straight-line distance from Stearns, not road miles.

Source: Kentucky Workforce Development Cabinet, KCTCS.

Customized Training

The Kentucky Community and Technical College System, through its training and development coordinators, will provide technical assistance and will identify and develop low-cost customized training programs and services for both established and prospective businesses. Businesses wanting to establish a customized training program should contact a Training and Development Coordinator at the Somerset Technical College or the Somerset Community College.

Assessment Services

Kentucky Tech Career Connections offers business, education, and government agencies testing packages for evaluating job applicants, selecting employees for promotional consideration and developing training programs within the organization. The Career Connections Assessment Center serving the McCreary County area is located at the Somerset Technical College.

Adult Education Services

Adult education programs are available to adults who want to develop new academic skills, improve basic skills, or earn a high school equivalency diploma. In the McCreary County area, adult basic education and adult literacy classes are administered through the McCreary County Literacy Program.

Bluegrass State Skills Corporation

The Bluegrass State Skills Corporation (BSSC) was established in 1984 by the General Assembly of the Commonwealth of Kentucky as an independent, de jure corporation to stimulate economic development through customized business and industry specific skills training programs. The BSSC works with business and industry and Kentucky's educational institutions to establish programs of skills training. The BSSC is attached to the Cabinet for Economic Development for administrative purposes, in recognition of the relationship between economic development and skills training efforts.

The BSSC is comprised of two economic development tools, matching grants and the newly authorized Skills Training Investment Credit Act. The BSSC grant program is available to new, expanding and existing business and industry. Eligible training activities include pre-employment skills training and assessment; entry level, skills upgrade and occupational upgrade training; train-the-trainer travel; and capacity-building. The Skills Training Investment Credit Act provides tax credits to existing businesses for skills upgrade training.

OTHER LOCAL FACILITIES

Local Medical Personnel

Physicians - 7

Dentists - 6

Hospitals

<u>General Hospitals</u>	<u>Location</u>	<u>Beds</u>
Lake Cumberland Regional Hospital	Somerset, KY; 34 miles north of Stearns	227
Scott County Hospital	Oneida, TN; 20 miles south of Stearns	99

Other Medical Facilities and Services

Adanta Clinical Services

Cumberland Manor Rest Home, Inc.

Homehealth

Lake Cumberland Homehealth

Lifeline

McCreary Christian Care Center

McCreary County Ambulance Service

McCreary County Health Center

McCreary County Health Care Facility

Winchester, Patton and Burgess Clinic (open 365 days)

Banks and Savings & Loan Associations

Bank of McCreary County

McCreary National Bank

Newspapers

McCreary County Record

Telephone Service

Highland Telephone Cooperative, Inc.

RECREATION

McCreary County offers a variety of recreational opportunities. The McCreary County Park, just south of Whitley City, offers three baseball/softball fields, a picnic area, a shelter, and hiking and fitness trails. Supervised recreational programs include T-ball, Babe Ruth and Little League baseball. The Sandhill Conservation Camp, near Whitley City in McCreary County, offers 38 RV hook-ups, a picnic shelter, a bathhouse, and a community building. Recreational facilities at the McCreary County schools include baseball fields, a football field, track, gymnasiums, tennis courts, softball fields, and a multi-purpose recreation area. Privately owned recreational facilities for roller skating and archery are also available in the area.

The Stearns Golf Course is a semi-private, nine-hole golf course with lighted tennis courts on the premises. The Stearns Golf Course is rated among the best nine-hole courses in the southeastern United States by the Professional Golfer's Association of America. Limited food facilities are also available.

McCreary County is in the southern portion of the Daniel Boone National Forest, a rugged 640,000-acre timberland stretching throughout east central Kentucky. Over 25 waterfalls and natural arches are located in McCreary County. Some of the scenic and recreational sites within 20 miles of Whitley City include Natural Arch Picnic and Scenic Area with a limestone arch, trails, and sheltered picnic facilities; Sawyer Campground, featuring picnic areas and a boat launching ramp on Lake Cumberland; Yahoo Falls Picnic Area, with a shelter house, trails, and rugged scenic views of a 113-foot waterfall; Alum Ford, a camping and boat launching area; Turkey Creek boat launching ramp; Great Meadow Camping Area; Hemlock Grove with a picnic area and trout stream; Bell Farm Hunter and Horse Camp Site; Apple Tree Rifle Range; Barren Fork Primitive Camping Area; and Sheltoewee Trace National Recreation Trail.

The Big South Fork National River and Recreation Area was developed by the U.S. Army Corps of Engineers in cooperation with the National Park Service. The Recreation Area is located along the Big South Fork of the Cumberland River from Whitley City in Kentucky, south of Oneida in Tennessee. Recreational opportunities in this rugged scenic area include whitewater rafting, canoeing, kayaking, camping, hiking, horseback riding and picnicking.

The Blue Heron Recreation Area, a restored mining camp, is operated by the National Park Service as part of the Big South Fork National River and Recreation Area. The interpretive exhibits provide visitors with an opportunity to witness life as it would have been when the mining camp operated on the banks of the Big South Fork of the Cumberland River. A campground, scenic overlooks, and hiking trails are also located in the area.

The Big South Fork Scenic Railway offers a chance to see part of the rugged Cumberland River area by rail. The train operates on a regular schedule between Stearns and the Blue Heron Recreation Area within the Big South Fork National River and Recreation Area, a distance of about six miles in each direction. The Barthell mining camp situated along the railway was renovated and is open to the public. The mining camp is accessible by train or passenger vehicle.

The Stearns Museum is housed in the 1907 office building for the Stearns Coal and Lumber Company, which operated from 1902-1911. Exhibits trace the area's history from prehistoric times through the "boom" of the coal and lumber industry. Cumberland Falls State Resort Park is located on Kentucky Highway 90, 20 miles northeast of Whitley City on McCreary County's eastern boundary. The park is famous for its "Falls" which drop 68 feet over a 125-foot wide ledge and shows one of only two known "moonbows" in the world. A "moonbow" is like a rainbow but is formed during a full moon on a clear night. The park offers a modern lodge with 53 rooms, 20 woodland duplexes, 26 cabins, camping, fishing, swimming, hiking, rafting, horseback riding, picnicking, tennis, planned recreation, a playground, and a gift shop. Also featured is a complete meeting facility which

holds up to 300 people; meals are catered to large groups. Cumberland Falls attracts more than one million visitors a year.

Lake Cumberland, accessible by three launching ramps in McCreary County, 23 miles north of Whitley City, is one of the nation's most productive fishing lakes with excellent bass, bluegill, and crappie fishing. Covering over 50,000 acres, with over 1,200 miles of shoreline, the lake is well known for its scenic beauty amid the surrounding palisades and woodlands.

Area (within 60 miles of Stearns)

General Burnside State Park (Burnside)

Lake Cumberland State Resort Park (Jamestown)

Laurel River Lake (Corbin/Cumberland Falls area)

Levi Jackson Wilderness Road State Park (London)

APPENDIX - DEFINITIONS

Geographic definition of the labor market area

A county's labor market area is defined as the base county, adjacent counties, and any other major commuting counties. Adjacency is used to define the labor market area primarily because of the small size of Kentucky's counties. The major commuting counties are defined from the point of view of the base county. Major commuting counties are those counties that comprise 90% of the base county's total commuters. The source of the commuting patterns is the 1990 journey-to-work data available from the U.S. Department of Commerce, Bureau of Economic Analysis.

Example – Logan County

To determine the labor market area for Logan County the following steps are taken. First, the counties with workers commuting into Logan county are listed in ascending order (see the table below). The cumulative percent is calculated. Next, all counties that comprise up to 90% of the commuters are included in the labor market area (actually the cut-off will be the county that breaks the 90% threshold – Montgomery County, TN at 92.6% in this case). Although Robertson is not a major commuter county, it is included since it is adjacent. The Logan County labor market is then comprised of the seven bold-faced counties in the table below.

Labor Market Area – Logan County (Example Only)				
Adjacent to Logan	Commuter County	Commuters into Logan	Percent of Total Commuters	Cumulative Percent
Y	Todd	385	24.4%	24.4%
Y	Warren	377	23.9	48.4
Y	Muhlenberg	365	23.2	71.5
Y	Simpson	162	10.3	81.8
Y	Butler	116	7.4	89.1
	Montgomery, TN	55	3.5	92.6
	Christian	36	2.3	94.9
	Sumner, TN	35	2.2	97.1
Y	Robertson, TN	25	1.6	98.7
	Davidson, TN	20	1.3	100.0
<i>Total Commuters into Logan County</i>		1,576	100.0	

Source: U.S. Department of Commerce, Bureau of Economic Analysis. Regional Economic Information System, CD-ROM. August 1997.

Potential Labor Supply

The potential labor supply is an estimate of those persons not classified as in the labor force (not employed and not unemployed), but who want a job. The assumption is that people not in the labor force at the local level would like a job at the same rate as the nation. The U.S. Department of Labor, Bureau of Labor Statistics provides national, yearly estimates of the percent of the people not in the labor force who want a job. This percent is applied to the county-level number of people not in the labor force.

Underemployed

Wholesale/retail trade and non-professional services have historically paid low wages. The assumption is that workers in these industries would take higher paying jobs if they were available. Non-professional services excludes Miscellaneous Repair Services (SIC 7600), Health Services (SIC 8000), Legal Services (SIC 8100), and Engineering and Management Services (SIC 8700).

Total Available Labor

Total available labor is the sum of the number of unemployed, potential labor supply, and underemployed. Please note that the number of unemployed is the only generally accepted measure of labor availability. The other concepts are weaker measures and should be used with caution.