

1985

## Industrial Resources: McLean County

Kentucky Library Research Collections  
Western Kentucky University, [spcol@wku.edu](mailto:spcol@wku.edu)

Follow this and additional works at: [https://digitalcommons.wku.edu/mclean\\_cty](https://digitalcommons.wku.edu/mclean_cty)

 Part of the [Business Administration, Management, and Operations Commons](#), [Growth and Development Commons](#), and the [Infrastructure Commons](#)

---

### Recommended Citation

Kentucky Library Research Collections, "Industrial Resources: McLean County" (1985). *McLean County*. Paper 6.  
[https://digitalcommons.wku.edu/mclean\\_cty/6](https://digitalcommons.wku.edu/mclean_cty/6)

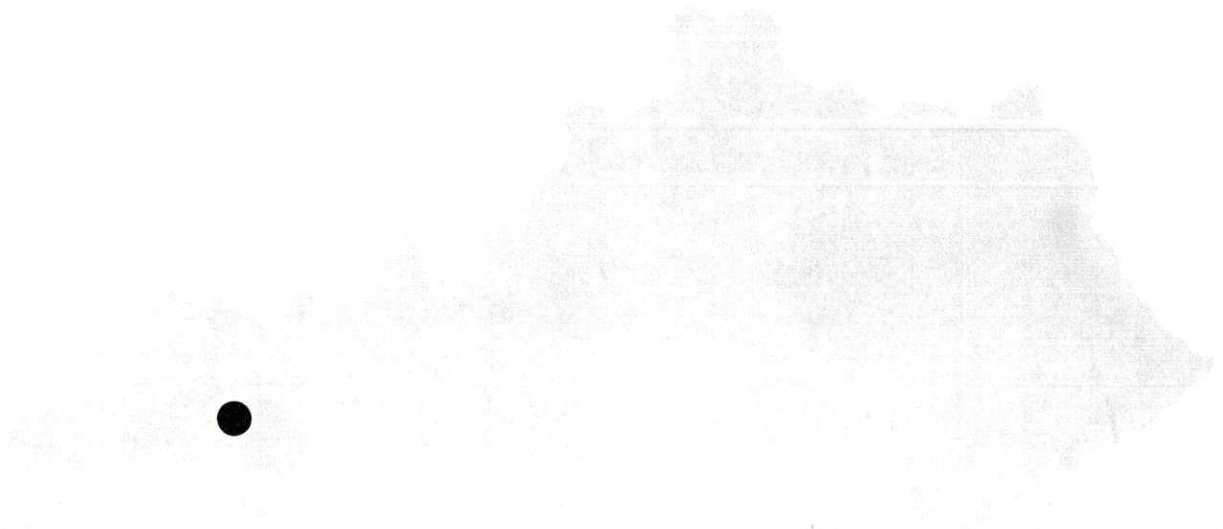
This Report is brought to you for free and open access by TopSCHOLAR®. It has been accepted for inclusion in McLean County by an authorized administrator of TopSCHOLAR®. For more information, please contact [topscholar@wku.edu](mailto:topscholar@wku.edu).

IR  
447

McLEAN COUNTY

**RESOURCES  
FOR  
ECONOMIC  
DEVELOPMENT**

**McLEAN COUNTY**



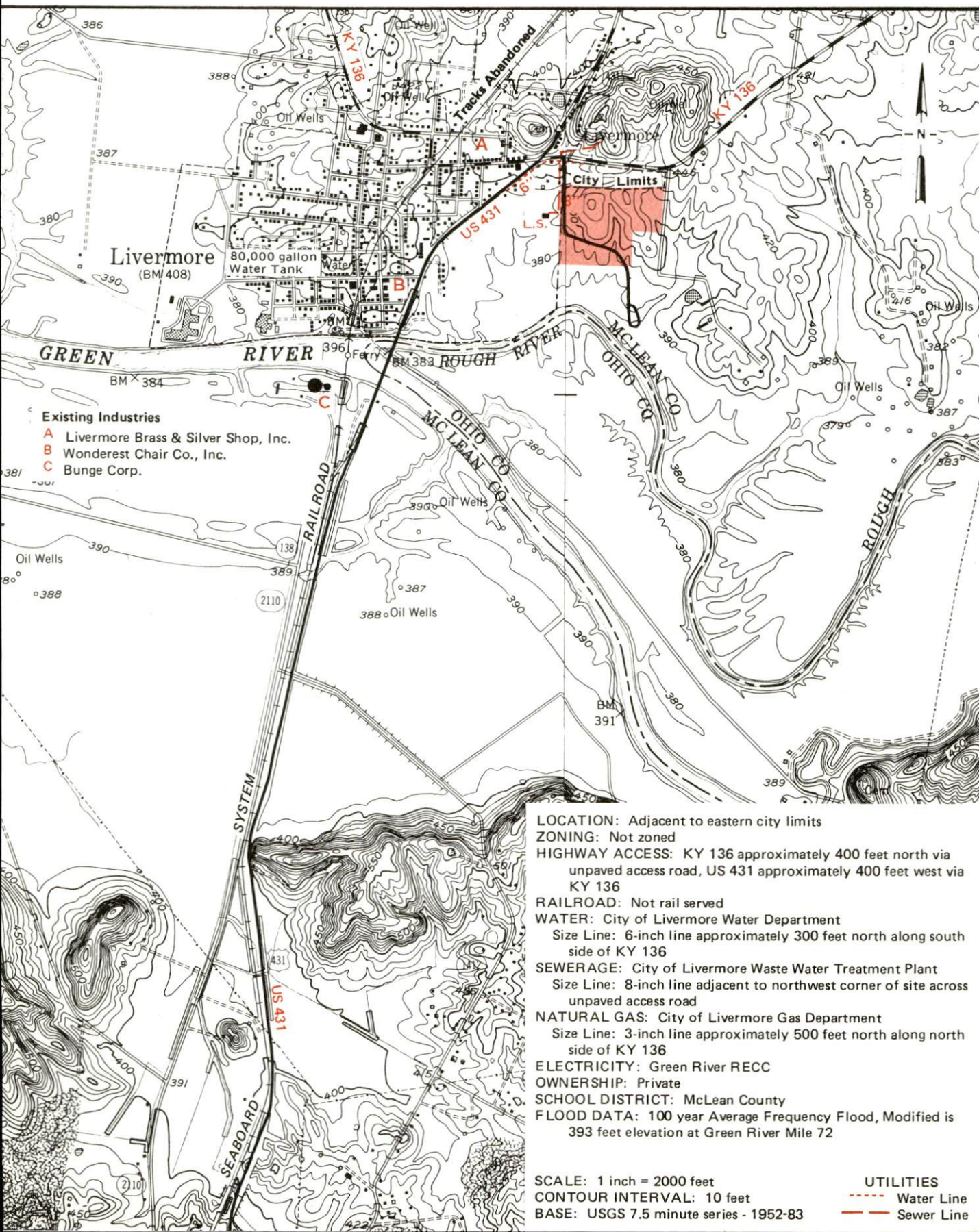
**KENTUCKY**

The Business Environment is Right



# LIVERMORE, KENTUCKY --- Site 185 --- 34 Acres

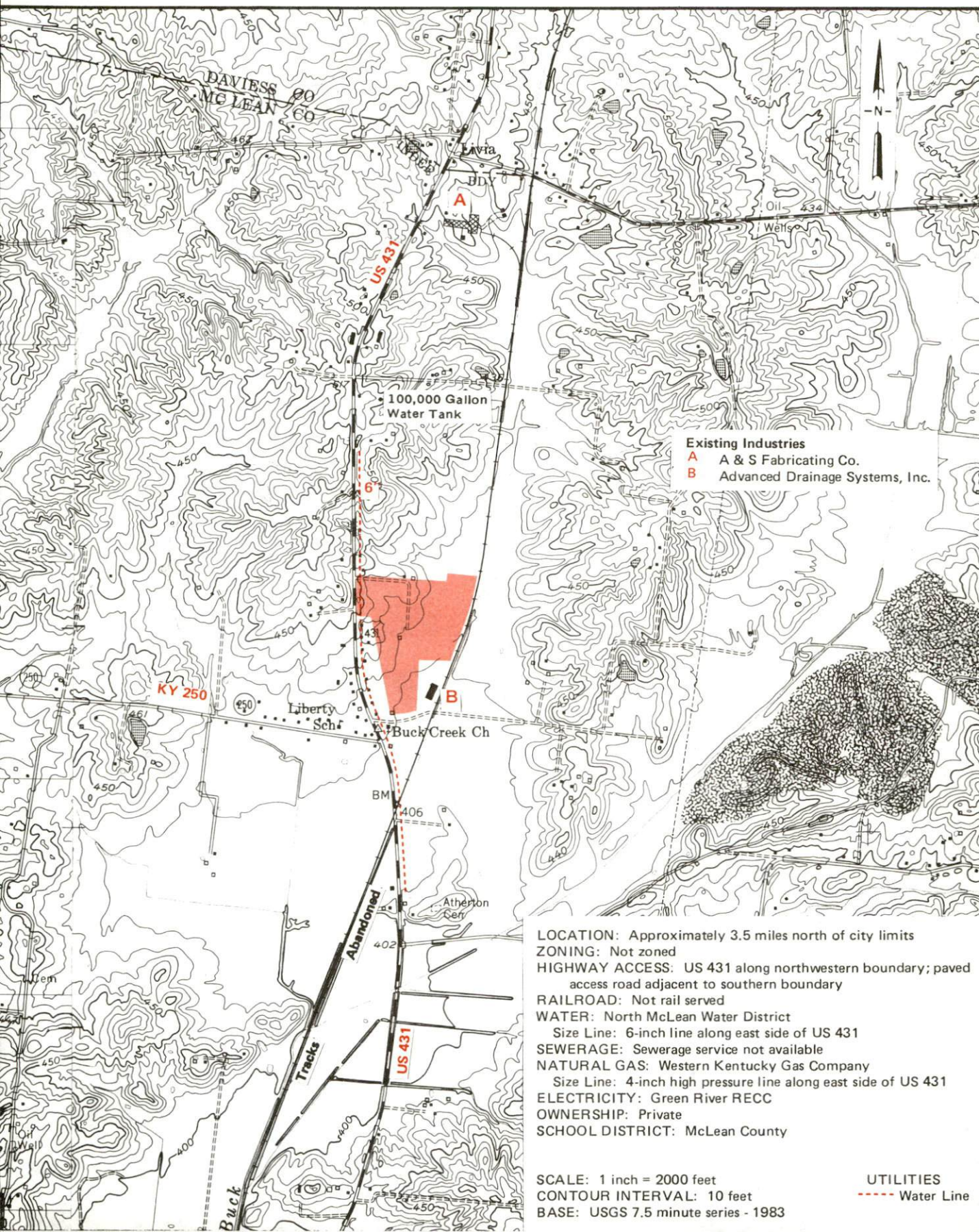
For more information contact the Kentucky Department of Economic Development, Industrial Development & Marketing Division, Capital Plaza Tower, Frankfort, Kentucky 40601 (502-564-7140).





LIVERMORE, KENTUCKY --- Site 285 --- 47 Acres

For more information contact the Kentucky Department of Economic Development, Industrial Development & Marketing Division, Capital Plaza Tower, Frankfort, Kentucky 40601 (502-564-7140).





# ISLAND, KENTUCKY --- Industrial Sites --- 1985

For more information contact the Kentucky Department of Economic Development, Industrial Development & Marketing Division, Capital Plaza Tower, Frankfort, Kentucky 40601 (502-564-7140).

## Site 185 - 28 Acres

**LOCATION:** Approximately 200 feet east of city limits  
**ZONING:** Not zoned  
**HIGHWAY ACCESS:** KY 85 along northern boundary; US 431 approximately 0.3 mile west via KY 85  
**RAILROAD:** Not rail served  
**WATER:** Island Water Department  
Size Line: 8-inch line adjacent to northwest corner of site at junction of KY 85 and KY 1412  
**SEWERAGE:** Island Waste Water Treatment Plant  
Size Line: 10-inch line adjacent to northwest corner of site at junction of KY 85 and KY 1412  
**NATURAL GAS:** Service presently not available  
**ELECTRICITY:** Kentucky Utilities Company  
**OWNERSHIP:** Private  
**SCHOOL DISTRICT:** McLean County

Site 185 - 28 ac.

Site 285 - 30 ac.

## Site 285 - 30 Acres

**LOCATION:** Approximately 1500 feet south of city limits  
**ZONING:** Not zoned  
**HIGHWAY ACCESS:** US 431 along eastern boundary  
**RAILROAD:** Seaboard System Railroad along western boundary  
**WATER:** Island Water Department  
Size Line: 6-inch line approximately 1800 feet north along east side of US 431  
**SEWERAGE:** Island Waste Water Treatment Plant  
Size Line: 8-inch line approximately 1600 feet north along east side of US 431  
**NATURAL GAS:** Service presently not available  
**ELECTRICITY:** Kentucky Utilities Company  
**OWNERSHIP:** Private  
**SCHOOL DISTRICT:** McLean County

**SCALE:** 1 inch = 2000 feet  
**CONTOUR INTERVAL:** 10 feet  
**BASE:** USGS 7.5 minute series - 1952  
Photorevised - 1981

### UTILITIES

----- Water Line  
----- Sewer Line

MC LEAN CO  
MUHLENBERG CO



# CALHOUN, KENTUCKY --- Site 185 --- 30 Acres

For more information contact the Kentucky Department of Economic Development, Industrial Development & Marketing Division, Capital Plaza Tower, Frankfort, Kentucky 40601 (502-564-7140).

**LOCATION:** Adjacent to northeastern city limits

**ZONING:** None

**HIGHWAY ACCESS:** KY 136 along southeastern boundary

**RAILROAD:** Not rail served

**WATER:** Calhoun Water Works

Size Line: 8-inch line adjacent to southern boundary across KY 136

**SEWERAGE:** Calhoun Sewer Plant

Size Line: 8-inch line approximately 800 feet southwest along north side of KY 136

**NATURAL GAS:** Western Kentucky Gas Company and Green River RECC

Size Line: 4-inch high pressure line along southeast side of KY 136

**ELECTRICITY:** Kentucky Utilities and Green River RECC

**OPTIONED BY:** McLean County Chamber of Commerce

**FLOOD DATA:** 100 year Average Frequency Flood, Modified is 391 feet at Green River Mile 62.5

**SCHOOL DISTRICT:** McLean County

**SCALE:** 1 inch = 2000 feet

**CONTOUR INTERVAL:** 10 feet

**BASE:** USGS 7.5 minute series - 1952

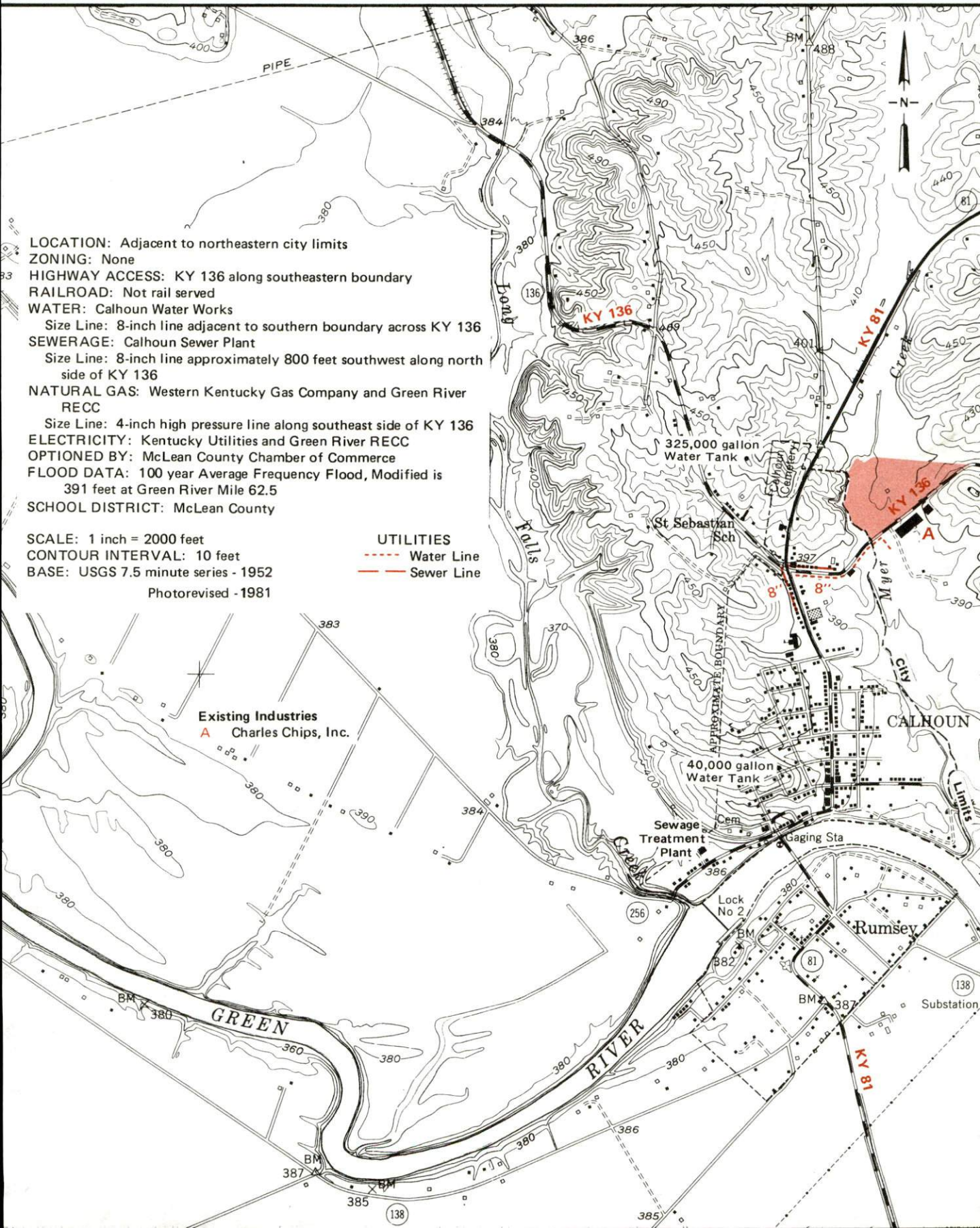
Photorevised - 1981

## UTILITIES

- Water Line
- Sewer Line

## Existing Industries

- A Charles Chips, Inc.





RESOURCES FOR ECONOMIC DEVELOPMENT  
MCLEAN COUNTY, KENTUCKY

Prepared by  
The Kentucky Department of Economic Development  
Division of Research and Planning  
in cooperation with  
The Livermore-Island Chamber of Commerce,  
The City of Calhoun, The City of Island,  
The City of Livermore, and  
The City of Sacramento

1985

## TABLE OF CONTENTS

<u>Chapter</u>	<u>Page</u>
INDUSTRIAL SITES .....	i
MCLEAN COUNTY, KENTUCKY - A RESOURCE PROFILE .....	1
THE LABOR MARKET AREA.....	3
Population .....	3
Labor Force Characteristics of Residents, 1984 .....	3
Selected Components of Nonagricultural Employment, by Place of Work, 1984 .....	4
McLean County Manufacturing Firms, Their Products and Employment.....	5
Labor Organizations in Manufacturing Firms .....	5
Industrial Services .....	6
Estimated Male Labor Supply .....	7
Estimated Female Labor Supply .....	7
Average Weekly Wages By Industry, by Place of Work, 1984 .....	8
Per Capita Personal Income .....	10
TRANSPORTATION .....	11
Rail .....	11
Highways .....	11
Truck Service .....	11
Air .....	12
Rental Services .....	13
Water .....	13
POWER AND FUEL .....	14
Electricity .....	14
Natural Gas .....	14
Other Fuels .....	15
WATER AND SEWERAGE .....	17
Public Water Supply .....	17
Raw Water .....	19
Sewerage .....	20
CLIMATE .....	22



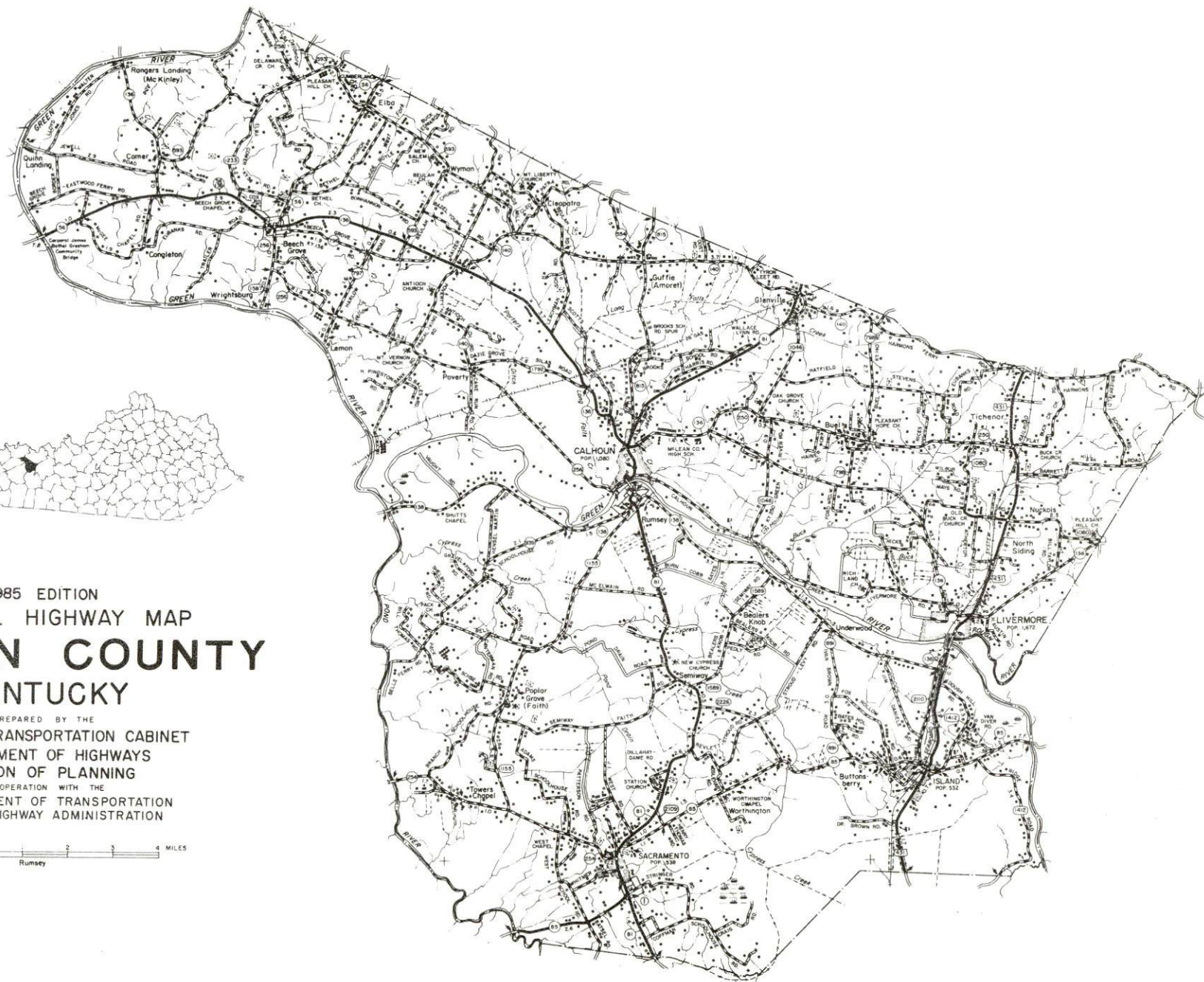
<u>Chapter</u>	<u>Page</u>
LOCAL GOVERNMENT .....	23
City .....	23
County .....	23
Assessed Value of Property, 1984 .....	23
Property Taxes .....	24
Combined State and Local Rates Per \$100 Valuation, 1984 .....	25
Utilities Gross Receipts Tax for Schools .....	26
Planning and Zoning .....	26
Safety .....	26
Police .....	26
Fire .....	26
Rescue Service .....	27
Refuse Collection and Disposal .....	27
EDUCATION .....	28
Public Schools .....	28
Area Colleges and Universities .....	29
Vocational Schools .....	30
HEALTH .....	32
Local Medical Personnel .....	32
Hospitals .....	32
Other Medical Facilities .....	32
Ambulance Service .....	32
OTHER LOCAL FACILITIES .....	33
Communications .....	33
Library Services .....	33
Religious Institutions .....	34
Financial Institutions .....	34
Clubs and Organizations .....	35
RECREATION .....	36
COMMUNITY IMPROVEMENTS .....	38



1985 EDITION  
GENERAL HIGHWAY MAP  
**MCLEAN COUNTY**  
KENTUCKY

PREPARED BY THE  
KENTUCKY TRANSPORTATION CABINET  
DEPARTMENT OF HIGHWAYS  
DIVISION OF PLANNING  
IN COOPERATION WITH THE  
U.S. DEPARTMENT OF TRANSPORTATION  
FEDERAL HIGHWAY ADMINISTRATION

0 1 2 3 4 MILES  
Rumsey

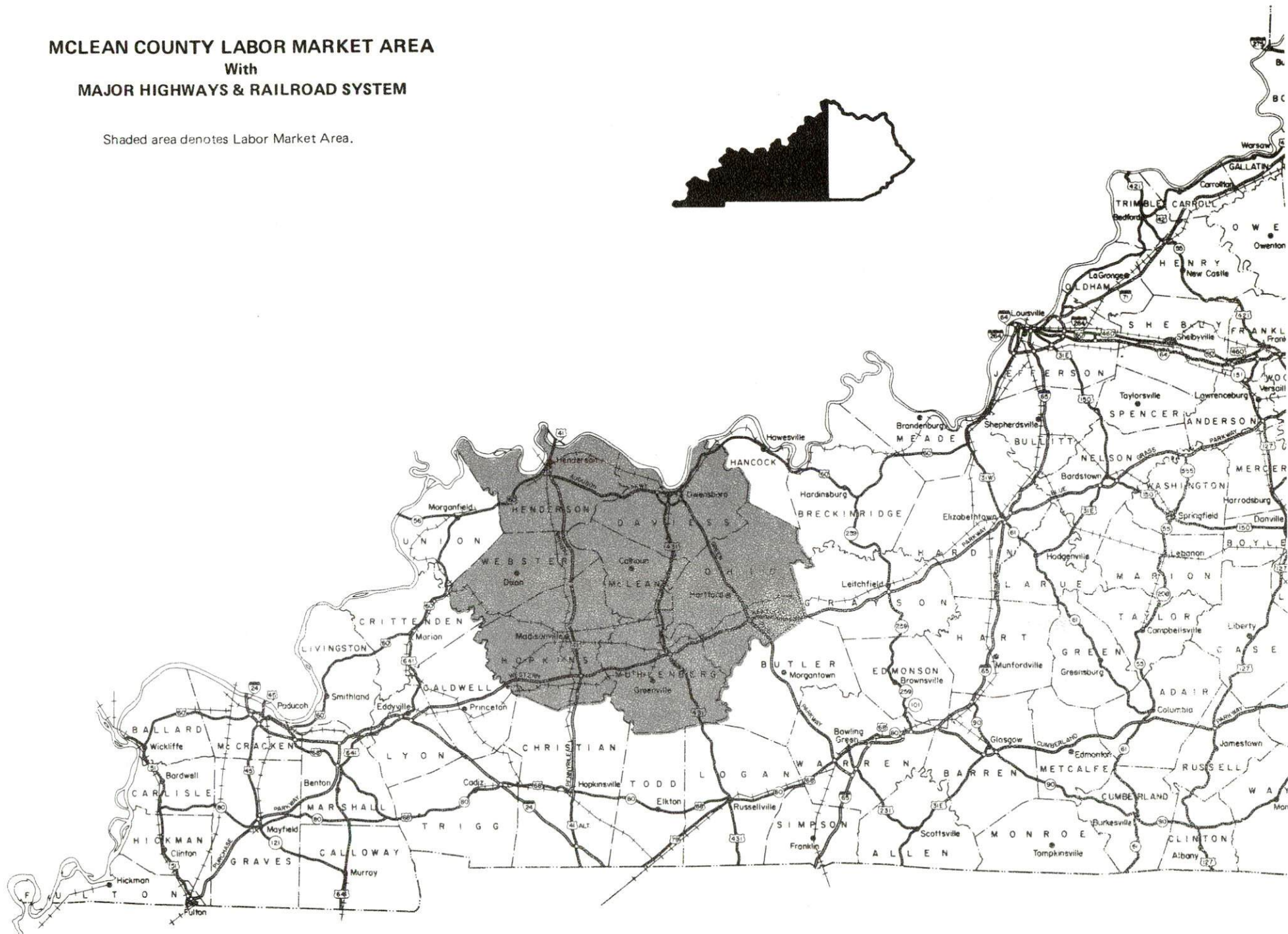




# MCLEAN COUNTY LABOR MARKET AREA

With  
MAJOR HIGHWAYS & RAILROAD SYSTEM

Shaded area denotes Labor Market Area.



## **MCLEAN COUNTY, KENTUCKY - A RESOURCE PROFILE**

McLean County is located in the western section of Kentucky, in the Western Kentucky Coal Field region. The county covers a total land area of 256 square miles. Calhoun, the county seat of McLean County, is located 21 miles south of Owensboro, Kentucky; 55 miles southeast of Evansville, Indiana; 131 miles southwest of Louisville, Kentucky; and 132 miles north of Nashville, Tennessee.

McLean County had a 1982 estimated population of 9,900 with 1,018 persons residing in Calhoun, 542 in Island, 1,642 in Livermore, and 522 in Sacramento.

### **The Economic Framework**

The total number of McLean County residents employed in 1984 averaged 5,020 with nonagricultural jobs accounting for 4,600 workers. Manufacturing firms in the county reported 410 employees; wholesale and retail trade provided 390 jobs; 140 people were employed in service occupations; and state and local government accounted for 370 employees.

Per capita personal income in McLean County in 1983 was \$8,892. Between 1979 and 1983, per capita income increased by 23.9 percent.

The McLean County labor market area includes McLean County and the adjoining counties of Daviess, Henderson, Hopkins, Muhlenberg and Webster. The total number of residents employed in the labor market area in 1984 averaged 112,890 with nonagricultural jobs accounting for 109,070 workers. Manufacturing firms in the area reported 17,040 employees; wholesale and retail trade provided 17,885 jobs; 13,710 people were employed in service occupations; state and local government accounted for 10,420 employees; contract construction firms provided 3,050 jobs; and 7,080 people were employed by mining and quarrying operations.

### **Resources for Growth**

1. Labor Supply - There is a current estimated labor supply of 13,490 men and 15,655 women available for industrial jobs in the labor market area. In addition, from 1985 through 1989, 10,810 young men and 10,270 young women in the area will become 18 years of age and potentially available for industrial jobs.



2. Transportation - Rail service is provided to Livermore and Island by the Seaboard System Railroad. Major highways serving McLean County are U.S. 431 and Kentucky 81. U.S. 431 is a "AAA" rated (80,000-pound gross load limit) trucking highway. Kentucky 81 is a "AAA" rated trucking highway north of Calhoun and a "AA" rated (62,000-pound gross load limit) trucking highway south of Calhoun. The Pennyrite Parkway, 14 miles west of Calhoun, the Audubon Parkway, 19 miles north of Calhoun, the Western Kentucky Parkway, 26 miles south of Calhoun, and the Green River Parkway, 27 miles east of Calhoun, provide McLean County with excellent highway transportation. Seven trucking companies provide McLean County with interstate and intrastate service. The Evansville Dress Regional Airport, 4 miles north of Evansville, Indiana, 59 miles northwest of Calhoun, is the nearest commercial airline service. The Owensboro-Daviess County Airport, 19 miles north of Calhoun, has two paved runways 6,500 feet and 3,700 feet in length. Calhoun and Livermore are located on the Green River, where a 9-foot navigational channel is maintained to the Ohio River.

3. Power and Fuel - Electric power is provided to McLean County by the Kentucky Utilities Company, an electric generation and transmission company, and the Green River Electric Corporation, which is supplied by the Big Rivers Electric Corporation. Natural gas service is provided to Calhoun and Sacramento by the Western Kentucky Gas Company, which is supplied by the Texas Gas Transmission Corporation. Livermore is provided natural gas by the City of Livermore Gas Department, which is supplied by the Texas Gas Transmission Corporation. Island is currently not served by natural gas service. Seven distributors of propane and six distributors of distillate fuel oil serve McLean County.

4. Education - The McLean County School System provides primary and secondary education to McLean County.

Eight institutions of higher learning, including three universities, two senior colleges, and three community colleges, are located within 75 miles of Calhoun.

The Daviess County State Vocational-Technical School, in Owensboro, 21 miles north of Calhoun, offers training in 10 courses. The Owensboro Vocational-Technical School, in Owensboro, 21 miles north of Calhoun, offers training in 16 courses.

## THE LABOR MARKET AREA

The McLean County Labor Market Area includes McLean County and the adjoining Kentucky counties of Daviess, Henderson, Hopkins, Muhlenberg and Webster.

### POPULATION

Area	1982*	1980	1970.	Percent Nonwhite
				1980
Calhoun	1,018	1,080	901	0.0
Island	542	532	410	0.0
Livermore	1,642	1,672	1,594	0.0
Sacramento	522	538	437	0.0
Labor Market Area	253,000	251,897	222,355	N/A
McLean County	9,900	10,090	9,062	0.8
Daviess County	86,800	85,949	79,486	4.5
Henderson County	41,400	40,849	36,031	7.7
Hopkins County	46,700	46,174	38,167	7.2
Muhlenberg County	32,000	32,238	27,537	5.3
Ohio County	21,400	21,765	18,790	1.4
Webster County	14,800	14,832	13,282	6.1

\* Population estimates.

Note: The 1980 city counts of population by race are provisional.

Sources: U.S. Department of Commerce, Bureau of the Census, 1980 Census of Population and Housing, March 1981; 1980 Census of Population, Number of Inhabitants; Local Population Estimates, Series P-26, June 1984, September 1984.

### LABOR FORCE CHARACTERISTICS OF RESIDENTS, 1984

	McLean County	Labor Market Area
Civilian Labor Force	5,670	126,036
Employment	5,020	112,886
Agricultural	421	3,816
Nonagricultural	4,599	109,070
Unemployment	650	13,150
Rate of Unemployment (%)	11.5	10.4

Source: Kentucky Cabinet for Human Resources, Kentucky Labor Force Estimates, Annual Averages, 1984.



SELECTED COMPONENTS OF NONAGRICULTURAL EMPLOYMENT,  
BY PLACE OF WORK, 1984

	<u>McLean County</u>	<u>Labor Market Area</u>
All Industries (total)	1,472	77,207
Manufacturing	410	17,041
Wholesale & Retail Trade	386	17,885
Services	140	13,710
State/Local Government	369	10,424
Contract Construction	17	3,053
Mining & Quarrying	12	7,076

Note: Excludes domestic workers, railway workers, certain nonprofit corporations, majority of federal government workers, and self-employed workers.

Source: Kentucky Cabinet for Human Resources, Average Monthly Workers Covered by Kentucky Unemployment Insurance Law, 1984.

MCLEAN COUNTY MANUFACTURING FIRMS,  
THEIR PRODUCTS AND EMPLOYMENT

Firm (Establishment date)	Product	Employment		
		Total	Male	Female
Calhoun				
Brackett Vaults, Inc. (1985)	Burial vaults	8	--	--
Charles Chips, Inc. (1962)	Potato chips	135	70	65
McLean County News (1884)	Newspaper	5	0	5
Island				
Trinity Welding (1984)	Steel fabrication	3	--	--
Livermore				
A & S Fabricating Company (1969)	Metal fabrication, structural steel, machine shop	37	34	3
Advanced Drainage Systems, Inc. (1977)	Corrugated plastic pipe and fittings	21	17	4
The Livermore Brass and Silver Shop, Inc. (1975)	Industrial plating	20	--	--
James A. Logsdon Lumber Company (1946)	Rough lumber, crossties, wood pallets & skids	6	6	0
Wonderest Chair Company, Inc. (1949)	Hospital & nursing home furniture	13	8	4
Sacramento				
E & M Machine Shop (1981)	Machine shop	5	--	--
Sacramento Feed Mill (1963)	Feed grinding	4	3	1
McLean County				
Barmet of Kentucky, Inc. (1977)*	Aluminum smelter, aluminum coil	210	205	5

\* Barmet of Kentucky, Inc., is located on the McLean-Daviess County line.

Sources: Kentucky Department of Economic Development, 1985 Kentucky Directory of Manufacturers; Division of Research and Planning.

LABOR ORGANIZATIONS IN MANUFACTURING FIRMS

There are no unions representing manufacturing firms in McLean County at the present time.



# INDUSTRIAL SERVICES

<u>Types of Services</u>	<u>Location</u>	<u>Mileage from Calhoun</u>
Custom Plastics Producers	Livermore, Kentucky	10
Electric Motor Repair	Owensboro, Kentucky	21
	Madisonville, Kentucky	26
Grinding, Precision & Tool	Evansville, Indiana	55
Heat Treating Facilities	Evansville, Indiana	55
Industrial Equipment & Supplies	Owensboro, Kentucky	21
Industrial Gases	Owensboro, Kentucky	21
	Henderson, Kentucky	45
Industrial Waste Removal	Owensboro, Kentucky	21
	Henderson, Kentucky	45
Machine Shops, Tool & Die	Sacramento, Kentucky	10
	Owensboro, Kentucky	21
	Greenville, Kentucky	32
Metal Finishers	Hartford, Kentucky	25
Metal Service Centers	Owensboro, Kentucky	21
	Greenville, Kentucky	32
Millwrights	Evansville, Indiana	55
	Hopkinsville, Kentucky	57
Public Warehouse Facilities	Owensboro, Kentucky	21

Sources: Kentucky Department of Economic Development, Kentucky Directory of Selected Industrial Services, 1985; Division of Research and Planning.

ESTIMATED MALE LABOR SUPPLY  
MCLEAN COUNTY LABOR MARKET AREA

Area	Current				Future
	Total Male	Unemployed	Under-employed	Not in Labor Force	Becoming 18 years of age 1985 thru 1989
Labor Market					
Area*	13,488	7,834	5,073	581	10,808
McLean	630	381	249	0	445
Daviess	4,320	2,574	1,746	0	3,792
Henderson	1,837	1,063	774	0	1,779
Hopkins	2,214	1,165	935	114	1,949
Muhlenberg	2,098	1,348	750	0	1,332
Ohio	1,415	1,011	404	0	894
Webster	974	292	215	467	617

ESTIMATED FEMALE LABOR SUPPLY  
MCLEAN COUNTY LABOR MARKET AREA

Area	Current				Future
	Total Female	Unemployed	Under-employed	Not in Labor Force	Becoming 18 years of age 1985 thru 1989
Labor Market					
Area*	15,655	5,316	6,141	4,198	10,268
McLean	489	269	220	0	415
Daviess	3,827	1,711	2,116	0	3,581
Henderson	2,167	1,027	1,140	0	1,684
Hopkins	3,552	735	1,202	1,615	1,850
Muhlenberg	3,124	638	742	1,744	1,248
Ohio	992	575	417	0	895
Webster	1,504	361	304	839	595

\* Additional workers may be drawn from other nearby counties.

Note: Unemployed - persons unemployed and actively seeking work;  
Underemployed - persons employed but working only 14 to 26 weeks per year;  
Not in Labor Force - represents the number of persons who would enter the labor force if suitable employment were available (based on the assumption that persons in Kentucky would like to participate in the labor force in the same proportion that they do nationally).

Sources: Kentucky Cabinet for Human Resources, Kentucky Labor Supply Estimates by County, 1984. Kentucky Department of Economic Development, Future Labor Supply Becoming 18 Years of Age, 1985 thru 1989.



AVERAGE WEEKLY WAGES BY INDUSTRY,  
BY PLACE OF WORK, 1984

	<u>McLean County</u>	<u>Daviess County</u>	<u>Henderson County</u>	<u>Hopkins County</u>
All Industries	\$253.80	\$311.81	\$328.33	\$339.64
Mining & Quarrying	316.42	441.01	559.79	681.27
Contract Construction	176.20	313.86	313.09	300.59
Manufacturing	310.74	424.01	392.71	398.03
Transportation, Communications & Public Utilities	506.90	470.32	439.61	388.90
Wholesale & Retail Trade	195.19	206.59	215.41	226.01
Finance, Insurance & Real Estate	253.57	298.31	308.02	262.82
Services	167.97	252.39	266.80	241.67
State/Local Government	239.26	313.91	299.43	310.80
Other	*	237.89	244.04	185.11
	<u>Muhlenberg County</u>	<u>Ohio County</u>	<u>Webster County</u>	
All Industries	\$375.44	\$353.53	\$350.51	
Mining & Quarrying	728.94	672.61	702.10	
Contract Construction	294.80	455.02	242.51	
Manufacturing	238.83	270.88	272.33	
Transportation, Communications & Public Utilities	450.04	393.29	513.25	
Wholesale & Retail Trade	220.46	187.05	201.83	
Finance, Insurance & Real Estate	266.25	259.25	255.77	
Services	218.60	217.52	147.47	
State/Local Government	275.90	243.79	282.08	
Other	275.55	208.97	165.16	

\* Not disclosed.

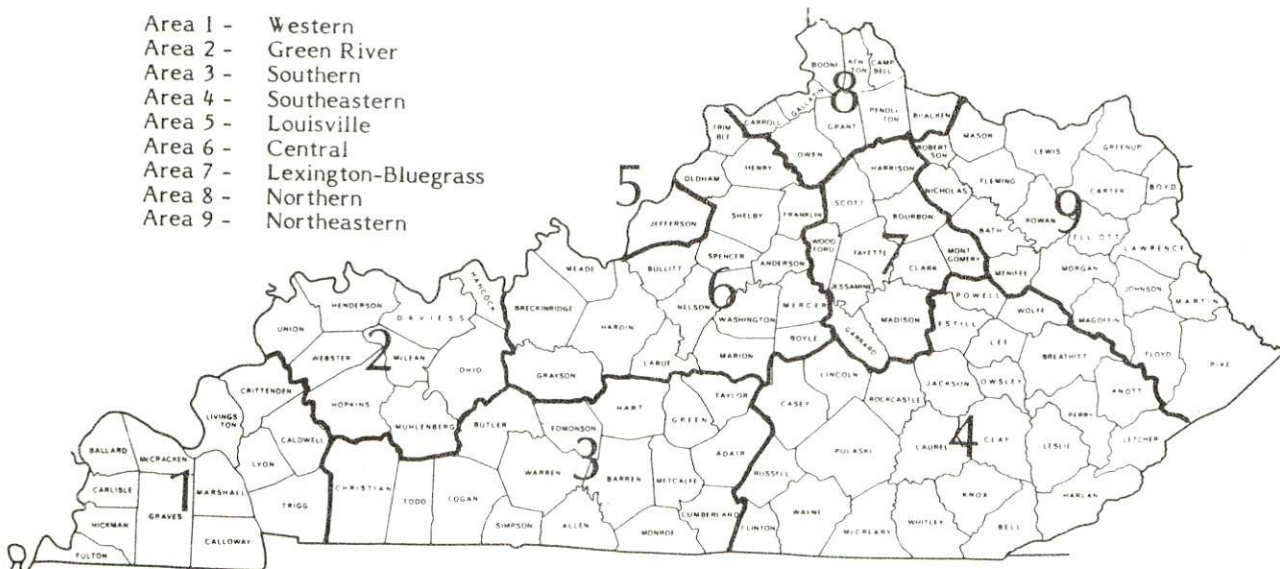
Note: Excludes domestic workers, railway workers, certain nonprofit corporations, majority of federal government workers, and self-employed workers.

Source: Kentucky Cabinet for Human Resources, Average Weekly Wages of Workers Covered by Kentucky Unemployment Insurance Law, 1984.

Occupational wage rates for specific industries are usually not available to most government agencies, and wage data furnished to state employment agencies by individual industrial employers are protected from disclosure by federal law. The most reliable up-to-date wage information can be obtained by direct contact with local employers.

Associated Industries of Kentucky, a voluntary organization of Kentucky businesses, regularly collects occupational wage rates and fringe benefits data from participating member firms. Data are compiled for over 127 clearly defined office, production, and service occupations. Tabulations are published for nine geographical areas of Kentucky, as shown on the map below. It should be noted that the data may be weighted by the preponderance of firms in the larger cities and may be somewhat higher than the rates paid in the smaller communities. Data from these tabulations are available, upon request, from the Kentucky Department of Economic Development, Frankfort, Kentucky 40601.

- Area 1 - Western
- Area 2 - Green River
- Area 3 - Southern
- Area 4 - Southeastern
- Area 5 - Louisville
- Area 6 - Central
- Area 7 - Lexington-Bluegrass
- Area 8 - Northern
- Area 9 - Northeastern



Associated Industries of Kentucky Area Wage Surveys



PER CAPITA PERSONAL INCOME

<u>Area</u>	<u>1979</u>	<u>1983</u>	<u>Percent Change</u>
McLean County	\$ 7,175	\$ 8,892	23.9
Labor Market Area Range	\$6,623 - 8,798	\$7,932 - 10,855	N/A
Kentucky	7,124	9,396	31.9
U. S.	8,651	11,687	35.1

Sources: U.S. Department of Commerce, Bureau of Economic Analysis; Commerce News, August 28, 1984; May 7, 1985. Kentucky Economic Information System, June 1985.

## TRANSPORTATION

### Rail

Line serving **Livermore and Island** - Seaboard System Railroad

Services - Branch line; local service available on an as needed basis; switching services; siding space for 35 cars at Island; nearest piggyback services are located at Owensboro, 21 miles north of Livermore

**Calhoun and Sacramento** are not served directly by rail.

For details on routing, schedules, rates, and services, contact:

Manager of Industrial Development  
Seaboard System Railroad  
P. O. Box 2157  
Louisville, Kentucky 40201  
(502) 587-5228

### Highways

The two major highways serving McLean County are U.S. 431 and Kentucky 81. U.S. 431 is a "AAA" rated (80,000-pound gross load limit) trucking highway. Kentucky 81 is a "AAA" rated trucking highway north of Calhoun and a "AA" rated (62,000-pound gross load limit) trucking highway south of Calhoun. The Pennyrite Parkway, 14 miles west of Calhoun, the Audubon Parkway, 19 miles north of Calhoun, the Western Kentucky Parkway, 26 miles south of Calhoun and the Green River Parkway, 27 miles east of Calhoun, provide McLean County with excellent multi-lane toll road availability.

### Truck Service

<u>Company</u>	<u>Home Office</u>
Bestway Express, Inc.*	Nashville, Tennessee 37210
Leoni Motor Express, Inc.*	Chicago Heights, Illinois 60411
Majors Transit, Inc.*	P. O. Box 9 Caneyville, Kentucky 42721
McLean Trucking Company**	P. O. Box 213 Winston-Salem, North Carolina 27154
Overnite Transportation Company*	P. O. Box 1216 Richmond, Virginia 23209
Smith's Transfer Corporation*	P. O. Box 1000 Staunton, Virginia 24401
Yellow Freight Sytem, Inc.*	P. O. Box 7270 Overland Park, Kansas 66207

\* Interstate and intrastate service.

\*\* Interstate service only.

Source: American Motor Carrier Directory, Spring 1985.



Other Freight Services

Airborne Express  
 Emery  
 Federal Express  
 Purolator Courier  
 United Parcel Service

Nearest Office or Shipping Center

Evansville, Indiana, 55 miles northwest  
 Evansville, Indiana, 55 miles northwest  
 Evansville, Indiana, 55 miles northwest  
 Evansville, Indiana, 55 miles northwest  
 Owensboro, Kentucky, 21 miles north;  
 Madisonville, Kentucky, 26 miles  
 southwest

**HIGHWAY MILES AND TRUCK TRANSIT TIME IN DAYS FROM  
 CALHOUN, KENTUCKY, TO SELECTED MARKET CENTERS**

City	Highway Miles	Delivery Time TL	City	Highway Miles	Delivery Time TL
Atlanta, Ga.	374	2	Los Angeles, Ca.	2,078	5
Baltimore, Md.	513	3	Louisville, Ky.	131	1
Birmingham, Ala.	328	2	Nashville, Tenn.	132	1
Chicago, Ill.	357	2	New Orleans, La.	649	3
Cincinnati, Ohio	232	2	New York, N. Y.	879	3
Cleveland, Ohio	476	2	Pittsburgh, Pa.	519	3
Detroit, Mich.	491	2	St. Louis, Mo.	233	2
Knoxville, Tenn.	309	2			

Note: Mileage computations are via the best interstate or primary highways, not necessarily the most direct route of travel.

Sources: Rand McNally Road Atlas, 1979. Official Kentucky Mileage Map, 1980.  
 Delivery time - Majors Transit, Inc., P. O. Box 9, Caneyville, Kentucky 42721.

**Air**Local

Location: Owensboro-Daviess County Airport  
 2 miles west of Owensboro;  
 19 miles north of Calhoun

Runways: 2 paved  
 Length: 6,500 feet; 3,700 feet

Traffic Control: Control tower, ground control, ILS

Lighting: Beacon, runway, wind sock, obstruction, and taxi lights

Services: Allegheny Commuter, 100 LL, Jet-A Fuel; storage; hangar;  
 tie-downs; major A & P repairs; general flying services;  
 taxi, rental cars; restaurant; direct line to motel

Air Freight Service: Air carriers accept air freight on space available basis

(Continued)

### Nearest Scheduled Commercial Airline Service

Location: Evansville Dress Regional Airport  
4 miles north of Evansville, Indiana;  
59 miles northwest of Calhoun, Kentucky

Runways: 3 paved

Length: 8,021 feet; 5,088 feet; 3,500 feet

Traffic

Control: Tower

Lighting: Beacon, runway

Services: Eastern, USAir, Allegheny Commuter, Britt Airways,  
Comair; fuel - 100LL, jet-A; hangars, tie-downs;  
major A & P repairs, major Avionics repairs;  
flight instruction, APU, charter, oxygen, plane  
rental, survival equipment; taxi, car rentals,  
courtesy car; weather information; restaurant

Air Freight  
Service: Air freight terminal

**Rental Services** - Car rentals are available in Livermore; truck and trailer rentals are available in Owensboro, 21 miles north of Calhoun

### **Water**

Calhoun and Livermore are located on the banks of the Green River, where a 9-foot navigation channel is maintained to the Ohio River. Commercial barge service is available on the Green River.

The Owensboro Riverport Authority operates a public riverport on the Ohio River at Owensboro, 21 miles north of Calhoun. Commodities handled include aluminum, iron and steel products, ferro manganese, ferro chrome, asphalt, liquids, coal, salt, grain, fertilizers, and general cargoes. Available services include direct transfer to and from rail, truck, or barge; both open and covered storage; and coal processing and loading. Owensboro is a designated Port of Entry making customs service available on a daily basis.



## POWER AND FUEL

### Electricity

Company serving **Calhoun, Island, Livermore and parts of McLean County** -  
Kentucky Utilities Company  
Source of power - Kentucky Utilities Company  
Total generating capacity - 3,164,000 KW\*  
For industrial rates contact:

Industrial Development Department  
Kentucky Utilities Company  
One Quality Street  
Lexington, Kentucky 40507  
(606) 255-1461

Company serving **a major portion of McLean County** - Green River Electric Corporation  
Source of power - Big Rivers Electric Corporation  
Total generating capacity - 1,548,500 KW  
For industrial rates contact:

Green River Electric Corporation  
3111 Fairview Drive  
P. O. Box 1389  
Owensboro, Kentucky 42302

### Natural Gas

Company serving **Calhoun** - Western Kentucky Gas Company  
Source of supply - Texas Gas Transmission Corporation  
Size of transmission mains - 26-inch (supplier); 2-inch (distributor)  
Distribution mains - 2, 3 and 4 inches  
Distribution pressure - 30 psi  
Btu content - 1,000 per cubic foot  
Specific gravity - .60  
For rates and supplies contact:

Western Kentucky Gas Company  
311 West Seventh Street  
Owensboro, Kentucky 42301  
(502) 685-8067

\* Kentucky Utilities Company's total generating capacity will be increased when a new 650,000 KW generation plant is completed in Hancock County in 1993.

Company serving **Livermore** - City of Livermore Gas Department\*  
Source of supply - Texas Gas Transmission Corporation  
Size of transmission mains - 3-inch (supplier); 3-inch (distributor)  
Distribution mains - 2 and 3 inches  
Distribution pressure - 20 to 40 psi  
Btu content - 1,007 per cubic foot  
Specific gravity - .59  
For rates and supplies contact:

City of Livermore Gas Department  
P. O. Box 279  
Livermore, Kentucky 42352  
(502) 278-2113 or 683-7763

**Island** is currently not served by natural gas service.

**Other Fuels** (Within 25 miles of Calhoun)

Propane

Conrad & Smith, Incorporated  
North Second Street  
Central City, Kentucky 42301

Empiregas, Inc., of Owensboro  
225 Booth Field Road  
Owensboro, Kentucky 42301

Lin-Gas, Inc.  
Highway 41 South  
Slaughters, Kentucky 42456

Miles LP Gas, Inc.  
Keller Road  
Owensboro, Kentucky 42301

Pargas of Owensboro  
P. O. Box 1310  
Owensboro, Kentucky 42302

Sure Gas, Inc.  
P. O. Box 596  
Owensboro, Kentucky 42302

Texas Corporation  
Highway 70 West  
Central City, Kentucky 42330

\* The City of Livermore Gas Department recently completed the rerouting of a 2-inch gas line. Total cost of the project, which was completed in 1984, was \$6,000.



## Fuel oils

### Distillate fuel oil -

Ashland Petroleum Fuel  
Distributor & Sales Center  
P. O. Box 821  
Owensboro, Kentucky 42301

Conrad & Smith, Incorporated  
North Second Street  
Central City, Kentucky 42330

Home Oil & Gas Company  
P. O. Box 1111  
Owensboro, Kentucky 42302

Industrial Petroleum Supply  
3520 New Hartford Pike  
Owensboro, Kentucky 42301

Key Oil Company  
1414 East 15th Street  
Owensboro, Kentucky 42301

Southern States  
Owensboro Petroleum Service  
4001 East 4th Street  
Owensboro, Kentucky 42301

Residual fuel oil - Arrangements must be made with the refinery.

Low sulphur content coal - Available in Kentucky.

## WATER AND SEWERAGE

### Public Water Supply

Company serving **Calhoun** - Calhoun Water Works  
P. O. Box 294  
Calhoun, Kentucky 42327  
(502) 273-3092

Source - Green River

Treatment plant capacity - 485,000 gallons per day

Average daily consumption - 260,000 gallons

Peak daily consumption - 400,000 gallons

Treatment processes - Coagulation, sedimentation, chlorination, rapid mix, flocculation, filtration, fluoridation

Calcium content - 025.0 ppm

Iron content - 0.04 pm

Hardness - 115.0 ppm as calcium carbonate

Storage capacity - 365,000 gallons

Size lines - 2, 4, 6, and 8 inches

Water pressure - 45 to 60 psi

### MONTHLY WATER RATES

First	2,000 gallons	\$5.00 (Minimum)
Next	3,000 gallons	1.85 per M gallons
Next	6,000 gallons	1.40 per M gallons
All over	11,000 gallons	.90 per M gallons

Tap-on charge:

3/4-inch meter	\$ 350
1-inch meter	500
1 1/2-inch meter	750
2-inch meter	1,000

Company serving **Island** - Island Water Department  
P. O. Box 33  
Island, Kentucky 42350  
(502) 486-9948

Source - 2 wells

Treatment plant capacity - 259,200 gallons per day

Average daily consumption - 98,240 gallons

Peak daily consumption - 120,000 gallons

Treatment processes - Aeration, rapid mix, coagulation, flocculation, sedimentation, filtration, chlorination, fluoridation

Calcium content - 028.2 ppm

Iron content - 00.08 ppm

Hardness - 149.0 ppm as calcium carbonate

Storage capacity - 155,000 gallons

Size lines - 2, 2½, 3, 6, and 8 inches

Water pressure - 40 to 80 psi



### MONTHLY WATER RATES

First	2,000 gallons	\$7.50 (Minimum)
Next	4,000 gallons	3.00 per M gallons
Next	4,000 gallons	2.25 per M gallons
Next	10,000 gallons	1.25 per M gallons
All over	20,000 gallons	1.00 per M gallons

Tap-on charge: \$200

Company serving **Livermore** - City of Livermore Water Department\*  
P. O. Box 279  
Livermore, Kentucky 42352  
(502) 278-2113 or 683-7763

Source - Green River

Treatment plant capacity - 500,000 gallons per day

Average daily consumption - 250,000 gallons

Peak daily consumption - 350,000 gallons

Treatment processes - Aeration, rapid mix, coagulation, flocculation, sedimentation, filtration, chlorination, fluoridation

Calcium content - 052.5 ppm

Iron content - 00.04 ppm

Hardness - 196.0 ppm as calcium carbonate

Storage capacity - 330,000 gallons

Size lines - 2 to 8 inches

Water pressure - 40 to 60 psi

### MONTHLY WATER RATES

#### Inside City Limits

First	1,000 gallons	\$6.60 (Minimum)
All over	1,000 gallons	2.45 per M gallons

#### Outside City Limits

First	1,000 gallons	\$9.10 (Minimum)
All over	1,000 gallons	2.65 per M gallons

Tap-on charge:

Inside city - \$100

Outside city - \$300

\* A \$425,000 renovation of the Livermore water treatment plant was completed in April 1985. Included in the project was the installation of a new intake system.

### MONTHLY WATER RATES

First	2,000 gallons	\$7.26 (Minimum)
Next	6,000 gallons	2.50 per M gallons
Next	2,000 gallons	3.00 per M gallons
Next	10,000 gallons	3.50 per M gallons
All over	20,000 gallons	5.00 per M gallons

Tap-on charge: \$300

Name of water district - North McLean County Water District\*  
Route 1, Box 242  
Livermore, Kentucky 42352  
(502) 278-2800

Area served - Northern McLean County

Date when water district began operating - April 1971

Source of supply of treated water - Calhoun Water Works, City of Livermore  
Water Department, West Daviess County Water District

Average amount of water used in a 24-hour period - 163,000 gallons

Peak amount of water used in a 24-hour period - 173,100 gallons

Storage capacity - 150,000 gallons

Size lines - 3, 4 and 6 inches

Water pressure - 45 psi

### MONTHLY WATER RATES

First	2,000 gallons	\$7.70 (Minimum)
Next	2,000 gallons	2.35 per M gallons
Next	2,000 gallons	1.85 per M gallons
Next	4,000 gallons	1.60 per M gallons
Next	30,000 gallons	1.35 per M gallons
Next	60,000 gallons	1.15 per M gallons
All over	100,000 gallons	.95 per M gallons

Tap-on charge:

3/4-inch meter - \$300

Any larger meter - \$500

### **Raw Water**

Surface water sources - Green River and Rough River

Average discharge - Green River at Calhoun - 1,122 cfs (53-years; USGS)

Expected ground water yield - 50 to 200 gpm in small portions across the northern part of the county; 5 to 50 gpm in a wide band along the Green River from the northwest to the southeast part of the county; 5 gpm or less over the remainder of the county

\* The North McLean County Water District has plans for the construction of a 150,000-gallon storage tank and installation of 10,000 feet of 6-inch water line.



## Sewerage

Company serving **Calhoun** - Calhoun Sewer Plant  
P. O. Box 294  
Calhoun, Kentucky 42327  
(502) 273-3092

Design capacity - 200,000 gallons per day

Average daily flow - 136,000 gallons

Type of treatment - Primary and secondary

Treatment processes - Screening, grit removal, primary sedimentation, contact stabilization, chlorination, sludge drying beds

Treated effluent discharged into - Green River

Size of sanitary mains - 6, 8 and 10 inches

Monthly rates - 75 percent of monthly water bill

Tap-on charge - \$500 except in the Mockingbird Hill area, where \$600 is charged and \$100 in Rolling Meadows

Company serving **Island** - Island Waste Water Treatment Plant\*  
P. O. Box 33  
Island, Kentucky 42350  
(502) 486-9967

Design capacity - 128,000 gallons per day

Average daily flow - 20,000 gallons

Type of treatment - Primary

Treatment processes - Grit removal, oxidation ditch, activated sludge, chlorination, sludge drying beds

Treated effluent discharged into - Green River

Size of sanitary mains - 8 inch

Monthly rates -

First	2,000 gallons	\$9.00 (Minimum)
Next	4,000 gallons	3.25 per M gallons
Next	4,000 gallons	2.75 per M gallons
Next	10,000 gallons	2.25 per M gallons
All over	20,000 gallons	1.75 per M gallons

Tap-on charge: \$300

\* Construction of Island Waste Water Treatment Plant was completed in June 1984. The \$1.6 million plant has a design capacity of 128,000 gallons per day.

Company serving **Livermore** - City of Livermore Waste Water  
Treatment Plant\*  
P. O. Box 279  
Livermore, Kentucky 42352  
(502) 278-2113 or 683-7763

Design capacity - 315,000 gallons per day

Average daily flow - 200,000 gallons

Type of treatment - Primary and secondary

Treatment processes - Screening, grit removal, oxidation ditch, chlorination,  
aerobic digester, sludge drying beds

Treated effluent discharged into - Green River

Size of sanitary mains - 8 to 12 inches

Size of storm mains - 24 to 36 inches

Monthly rates - Based on monthly water bill

First	1,000 gallons	\$6.50 (Minimum)
All over	1,000 gallons	2.60 per M gallons

Tap-on charge: \$100

**Sacramento** is currently not served by a sewerage treatment plant, but there are plans for the construction of one in Summer 1986. The design capacity of the lagoon system plant will be 62,000 gallons per day.

---

\* The City of Livermore Waste Water Treatment Plant plans an expansion of lines to all areas in the city. The \$800,000 expansion will start in Fall 1985 and be completed in Summer 1986.



## CLIMATE

### McLean County

#### Temperature

Normal (30-year record)	55.70 degrees
Average annual 1984	55.80 degrees
Record highest, July 1954 (44-year record)	105.00 degrees
Record lowest, February 1951 (44-year record)	-23.00 degrees
Normal heating degree days (30-year record)	4,729
(Heating degree day totals are the sums of negative departures of average daily temperatures from 65 degrees F.)	

#### Precipitation

Normal (30-year record)	41.55 inches
Mean annual snowfall (29-year record)	14.10 inches
Total precipitation 1984	49.75 inches
Mean number days precipitation (.01 inch or more) (44-year record)	115.80
Mean number days thunderstorms (44-year record)	45.20

#### Prevailing Winds (through 1963)

South-Southwest

#### Relative Humidity (23-year record)

Midnight	78 percent
6 a.m.	81 percent
Noon	59 percent
6 p.m.	62 percent

Source: U.S. Department of Commerce, Environmental Science Services  
Administration, Climatological Data, 1984. Station of record: Evansville,  
Indiana.

## LOCAL GOVERNMENT

### City

#### Calhoun

Structure - Mayor - 4-year term; 6 council members - 2-year terms

Budget 1985-86 - General Fund \$138,350

Water Fund 156,000

Sewer Fund 50,000

Fees and licenses - Business license fees range from \$10 to \$125 annually

#### Island

Structure - Mayor - 4-year term; 4 commissioners - 2-year terms

Budget 1985-86 - General Fund \$10,500

Water and Sewer Fund 95,000

Fees and licenses - Most business license fees range from \$3.50 to \$25.50 annually; manufacturing plants - \$100 per \$1,000 stock with a minimum of \$7.50

#### Livermore

Structure - Mayor - 4-year term; 6 council members - 2-year terms

Budget 1985-86 - General Fund \$141,427

Water and Sewer Fund 345,074

City Gas System 378,898

Fees and licenses - Business license fees range from \$6 to \$210; manufacturing plant - \$1 per \$1,000 capital stock with a minimum of \$210

### County

Structure - County Judge/Executive - 4-year term; 7 magistrates - 4-year terms

Budget 1984-85 - General Fund \$304,631; Road Fund \$407,211

#### Assessed Value of Property, 1984\*

<u>Classes of Property</u>	<b>Calhoun</b>	<b>Island</b>
Real Estate	\$10,891,200	\$ 2,041,400
Tangibles	3,481,909	922,119
	<b>Livermore</b>	<b>McLean County</b>
Real Estate	\$11,388,950	\$159,017,322
Tangibles	3,728,581	32,861,959

\* Excludes Homestead Exemptions.



## Property Taxes

All property in Kentucky is assessed at 100 percent of fair cash value.

Land and buildings are taxed by the state and may be taxed by local jurisdictions. The 1984 state rate is \$0.22 per \$100 of assessed valuation.

Manufacturing machinery, raw materials inventories, pollution control equipment, and goods in the process of manufacture are not subject to local taxation. The state rate is \$0.15 per \$100. (**Note:** Effective January 1, 1986, the state rate for raw materials and goods in process will be reduced to \$0.001 per \$100.)

Other tangible personal property owned by manufacturers (automobiles, trucks, finished goods, office furniture, office equipment) is taxed by the state at \$0.45 per \$100 and may be taxed by local jurisdictions. (**Note:** Effective January 1, 1986, the state rate for finished goods will be reduced to \$0.001 per \$100.)

Intangible personal property located in Kentucky (money in hand, shares of stock, notes, bonds, accounts receivable, and other credits) is taxed by the state at \$0.25 per \$100, and is not subject to local taxation.

Property stored in public warehouses in a transit status is not subject to local taxation. The state rate is only \$0.015 per \$100. (**Note:** Effective January 1, 1986, the state rate will be reduced to \$0.001 per \$100.)

Private leaseholds in industrial facilities owned by cities or counties and financed by industrial revenue bonds are subject to a state tax of \$0.015 per \$100 of value (essentially the lessee's equity, adjusted for appreciation or depreciation). Local taxation is not permitted.

**Combined State and Local Rates Per \$100 Valuation, 1984\***  
(100% assessment)

	<u>Site Inside City of Calhoun</u>	<u>Site Inside City of Island</u>
1. Land and buildings	\$0.6890	\$0.6700
2. Mfg. machinery, raw materials, goods in process, pollution control equipment	0.1500	0.1500
3. Automobiles and trucks	0.9180	0.8990
4. Finished goods, office equipment, other tangibles	0.9350	0.9160
5. Intangibles (accounts receivable, notes, bonds, etc.)	0.2500	0.2500
6. Property stored in public warehouses in a transit status	0.0150	0.0150
7. Leaseholds in industrial revenue bond financed plants	0.0150	0.0150
	<u>Site Inside City of Livermore</u>	<u>Site Inside Unincorporated McLean County</u>
1. Land and buildings	\$0.6960	\$0.5190
2. Mfg. machinery, raw materials, goods in process, pollution control equipment	0.1500	0.1500
3. Automobiles and trucks	0.9250	0.7480
4. Finished goods, office equipment, other tangibles	0.9420	0.7650
5. Intangibles (accounts receivable, notes, bonds, etc.)	0.2500	0.2500
6. Property stored in public warehouses in a transit status	0.0150	0.0150
7. Leaseholds in industrial revenue bond financed plants	0.0150	0.0150

\* Kentucky Department of Economic Development.



## Utilities Gross Receipts Tax for Schools

A 3 percent tax is levied on utilities receipts for schools in McLean County. Tax is paid by all consumers of utilities as an add-on to the utilities bills. Exempted are receipts from utilities services that are resold and the receipts from the sale of energy or energy producing fuels that exceed 3 percent of the cost of production in manufacturing, processing, mining or refining.

## Planning and Zoning

County agency - McLean County Planning Commission

Participating cities - Calhoun and Livermore

Zoning enforced - Calhoun and Livermore

Subdivision regulations enforced - All areas

Local codes enforced - None

Mandatory state codes enforced - Kentucky Plumbing Code, National Electric Code, Kentucky Boiler Regulations and Standards, Kentucky Building Code (modeled after BOCA code)

## Safety

Police	Calhoun	Island
Total staff	1	-
Radio-patrol cars	1	-
	Livermore	McLean County
Total staff	1 full-time	2
	1 part-time	
Radio-patrol cars	1	1
Fire	Calhoun	Island
Insurance Services		
Office, Public		
Protection		
Classification	7	9
Volunteers	12	20
	Livermore	McLean County
Insurance Services		
Office, Public		
Protection		
Classification	7	*
Volunteers	15	116

\* The McLean County Fire Department is divided into five fire protection areas with volunteers and fire fighting equipment located in Beech Grove, Calhoun, Island, Livermore and Sacramento. All areas have a Class 9 fire rating for up to 5 miles from the fire station.

## **Rescue Service**

McLean County Fire Department

Number of volunteers - 116

Equipment - One fully equipped rescue squad plus equipment maintained at each volunteer fire department in McLean County

Personnel training - 32 emergency medical technicians, emergency medical technician training, advanced first aid, basic first aid

## **Refuse Collection and Disposal**

McLean County operates a county-wide solid waste collection service at no charge to residential, business, or industrial users. Collection is once weekly with disposal at a sanitary landfill. Refuse may be hauled directly to the sanitary landfill at no charge. Private service is also available throughout the county.



## EDUCATION

### Public Schools

#### McLean County\*

Total Enrollment (June, 1985)	1,936
Kindergarten	130
Elementary	716
Middle School	484
High School	606
Pupil-Teacher Ratio (1983-84)	18.9
Percent High School Graduates to College (1983-84)	32.7
Expenditures Per Pupil (1983-84)	\$ 1,725.46
Bonded Indebtedness (June 30, 1984)	\$2,275,000**

---

\* The McLean County School System recently revised the student discipline code and the teacher evaluation system.

\* Includes refunding issues of \$1,065,000.

## Area Colleges and Universities

<u>Name</u>	<u>Location (Miles distant)</u>	<u>Enrollment (Fall, 1984)</u>	<u>Highest Degree Conferred</u>
Brescia College	Owensboro, Kentucky (21)	815	Baccalaureate*
Kentucky Wesleyan College	Owensboro, Kentucky (21)	836	Baccalaureate*
Madisonville Community College	Madisonville, Kentucky (26)	1,417	Associate
Henderson Community College	Henderson, Kentucky (45)	1,434	Associate
Indiana State University, Evansville Campus	Evansville, Indiana (55)	3,848	Masters (Education only)
University of Evansville	Evansville, Indiana (55)	5,824	Masters
Hopkinsville Community College	Hopkinsville, Kentucky (57)	1,113	Associate
Western Kentucky University	Bowling Green, Kentucky (71)	11,771	Masters, Specialist**

\* Courses in masters degree programs are taught on campus by faculty members of Western Kentucky University or Murray State University. The degrees are issued by Western Kentucky University or Murray State University.

\*\* Joint doctoral degree programs are offered in cooperation with the University of Kentucky, Lexington, and cooperative doctoral degree programs are offered with the University of Louisville. The degrees are issued by the University of Kentucky or the University of Louisville.

## Vocational Schools

Both the state vocational-technical schools and the area vocational education centers are operated by the Kentucky Department of Education. The state vocational-technical schools enroll persons full time who are at least 16 years of age and not in school. These students attend classes for six hours each day. The area vocational education centers are designed to accommodate high school students who are at least 15 years of age. These students attend vocational school for three hours each day. The state vocational-technical schools and the area education centers offer evening courses to enable working adults to upgrade current job skills.

### Nearest State School

Location	Daviess County State Vocational-Technical School
Miles Distant	Owensboro
Curriculum	21
	Business and Office
	Clerical
	Secretarial
	Consumer and Home Economics
	Child Care Services
	Commercial Foods
	Retailing I
	Health and Personal Services Occupations
	Cosmetology
	Industrial Education
	Auto Body Repair
	Auto Mechanics
	Diesel Mechanics
	Drafting (with CAD/CAM)
	Welding
	Learning Resource Center
	Computer Lab

Location	Owensboro Vocational-Technical School
Miles Distant	Owensboro
Curriculum	21
	Health and Personal Services Occupations
	Emergency Medical Technician
	Health Careers
	Licensed Practical Nursing
	Nursing Assistant
	Industrial Education
	Basic Electronics/Electricity
	Carpentry
	Communications Electronics
	Heating and Air Conditioning
	Home Entertainment Electronics
	Industrial Electricity
	Instrumentation Electronics
	Machine Shop

(Continued)



Instrumentation Electronics  
 Machine Shop  
 Masonry  
 Plumbing  
 Sheet Metal  
 Welding  
 Computer Laboratory  
 Learning Resource Center

Nearest Area Education Center

Location	Ohio County Area Vocational Education Center
Miles Distant	Hartford 25
Curriculum	Business and Office Accounting/Jr. Management Clerical Secretarial Health and Personal Services Occupations Health Services Industrial Education Auto Mechanics Carpentry-Building Trades Industrial Electricity Welding

Arrangements can be made to provide training in the specific production skills required by an industrial plant. Instruction may be conducted either in the vocational school or in the industrial plant, depending upon the desired arrangement and the availability of special equipment.

## HEALTH

### Local Medical Personnel

Physicians - 3

Dentists - 4

### Hospitals

<u>General Hospital</u>	<u>Location</u>	<u>Beds</u>
McLean County General Hospital	Calhoun	26

General hospital facilities - X-ray, laboratory services, emergency facilities

Medical staff - Physician, radiologist, 2 pathologists, and 2 dentists on courtesy staff; 6 registered nurses; 5 licensed practical nurses

Additional hospitals are located in Owensboro, 21 miles north of Calhoun. The Owensboro-Daviess County Hospital has 445 beds, and Mercy Hospital maintains 125 beds.

### Other Medical Facilities

Green River District Health Department - McLean County Health Center

### Ambulance Service

Name - Muster Funeral Home Ambulance Service

Staff - 8 emergency medical technicians

Service - 24-hour, county-wide

Equipment - One ambulance stationed in Calhoun and one stationed in Livermore with three backup ambulances available

## OTHER LOCAL FACILITIES

### Communications

Telephone -	South Central Bell Telephone Company
Telegraph -	Western Union
Services -	Toll-Free number, 1-800-325-6000
Postal -	U.S. Post Office*
Class -	Second
Mail received -	Once daily
Mail dispatched -	Once daily
Newspapers -	The McLean County News
Weekly and circulation -	3,042
Other papers received from -	Louisville and Owensboro, Kentucky; Evansville, Indiana
Radio -	
Major stations received from -	Madisonville, Henderson, Owensboro, Central City, Hartford, and Bowling Green, Kentucky; Evansville, Indiana
Television -	
Airwave reception from -	Henderson, Louisville, Bowling Green, and Paducah, Kentucky; Nashville, Tennessee; Evansville, Indiana
Cable service* -	Calhoun and Livermore
Number of cable channels -	21
Kentucky Educational Television -	Madisonville transmitter - Channel 35

### Library Services

The Livermore Community Library operates on a volunteer basis, with a collection of 15,000 volumes. Construction of a full-service library is to start in Fall 1985.

\* Post offices are located in Calhoun, Island, Livermore, and Sacramento, with each having the same classification.

\* The installation of cable service in Sacramento is planned.



## Religious Institutions

### McLean County

Denominations - Assembly of God  
 Baptist  
 Catholic  
 Christian  
 Church of Christ  
 Cumberland Presbyterian  
 General Baptist  
 Pentecostal  
 Pilgrim Holiness  
 Presbyterian  
 Seventh Day Adventist  
 United Methodist

Nearest Synagogues - Owensboro, Kentucky, 21 miles north  
 Congregations - Adath Israel (reform)

## Financial Institutions

<u>Banks</u>	<u>Assets</u>	<u>Deposits</u>	<u>Statement Date</u>
Citizens Deposit Bank (Calhoun)	\$25,508,123.00	\$22,221,305.00	12/31/84
Farmers and Merchant Bank (Livermore)	9,241,000.00	7,162,000.00	6/30/85
First Security Bank of McLean County (Island)	7,884,000.00	6,606,000.00	6/30/85
Sacramento Deposit Bank (Sacramento)	18,673,375.88	15,495,522.06	6/29/85

<u>Savings and Loan Associations</u>	<u>Assets</u>	<u>Savings Accounts</u>	<u>Statement Date</u>
Cardinal Federal Savings and Loan Association (Calhoun)	\$207,475,300.56	\$199,471,174.61	12/31/84
First Kentucky Federal Savings and Loan Association (Livermore)	164,829,755.18	158,534,765.30	12/31/84

## Clubs and Organizations

### McLean County

American Legion  
Babe Ruth League  
Beta Club  
Boy Scouts  
Brownies  
Cub Scouts  
Disaster and Emergency  
Services  
Eastern Star  
Farm Bureau  
Foreign Club  
4-H Club  
FBLA  
FFA  
FHA  
Girl Scouts  
HELP, Inc.

History Club  
Island Community Development  
Association, Inc.  
Junior Pro Basketball  
Keep America Beautiful Committee  
Lions  
Little League  
Livermore-Island Chamber of  
Commerce  
Masonic Lodge  
McLean County Airport Board  
Modern Woodmen of the World  
PTA  
Recreation Committee  
Senior Citizens  
Senior Homemakers Club  
Student Council  
T-Ball  
Women's Club

## RECREATION

### Local

A variety of public recreation facilities are available in McLean County. In Calhoun, there are two parks, a playground, two tennis courts, a baseball diamond, and an indoor movie theater. The Island Recreation Committee maintains a miniature park which has a tennis court, basketball court, a paved multi-use area, playground equipment and picnic tables. A baseball diamond and a multi-purpose field are also available in Island. Two parks, a playground, two tennis courts and two baseball diamonds are located in Livermore. A skating rink is located in Sacramento. In addition, four tennis courts, softball field, baseball field, and playground equipment are available at the McLean County High School.

Windy Hollow Recreation, 10 miles north of Calhoun, has thirteen well-stocked lakes, cabins, trailer sites, a restaurant and a country store. The parkland area offers swimming, fishing, picnicking, hiking, playground facilities, miniature golf, and a 250-foot water slide.

Miller Lakes, 12 miles north of Calhoun, offers three fishing lakes, one swimming lake, campground, cabins, snack bar, fishing, picnicking, hiking, playground equipment, paddle boats, and miniature golf.

### Area (Within 55 miles)

**Owensboro**, 21 miles north of Calhoun, is Kentucky's third largest city. Owensboro is a source of many entertainment and recreational facilities associated with larger communities. Points of interest include museums, an orchestra and two colleges.

**Ben Hawes State Park**, 29 miles north of Calhoun near Owensboro, is a 300-acre park which is open year-round. It contains tennis courts, hiking trails, a picnic area and shelters, plus an 18-hole and 9-hole golf course.

Just north of Henderson, 47 miles northwest of Calhoun, is the **John James Audubon State Park**, a 692-acre park where the famed naturalist gathered material for his painting, "The Birds of America." Many paintings by Audubon and his sons, and 126 first-edition prints of his paintings are on display at the Audubon Memorial and Nature Museum which is the focal point of the park. Other park features include the Audubon woods, a bird sanctuary, and a 12-acre nature preserve lake. The park has cottages and camping sites. Recreational facilities include a 28-acre recreational lake, a beach and a bathhouse, rental rowboats and pedal boats, a dock, a 9-hole golf course, hiking trails, picnic shelters, and playgrounds. Organized recreation programs are offered during the summer.

**Lake Malone State Park**, located in southern Muhlenberg County, 44 miles south of Calhoun, offers camping facilities, swimming, fishing, and boating on a 788-acre lake. Playground facilities and picnic shelters are located in a beautiful scenic cliff area. Located across from the entrance to the park is an inn featuring luxury rooms, a restaurant, a swimming lake, a beach, boating, fishing, tennis, and nature trails.



**Pennyrile Forest State Resort Park** near Dawson Springs is located 55 miles southwest of Calhoun. The 24-room lodge and cottages nestled within the trees provide excellent accommodations. Other facilities and activities include a dining room, a gift shop, rental rowboats and pedal boats, a 9-hole golf course, hiking trails, horseback riding, picnicking, playgrounds, shuffleboard, swimming at the lodge pool and off a sand beach, and two tennis courts. Lake Beshear, only four miles from the lodge, sports good fishing.

## **COMMUNITY IMPROVEMENTS**

### **Recent**

Construction of the waste water treatment plant in Island was completed in June 1984. The \$1.6 million plant has a design capacity of 128,000 gallons per day.

A \$425,000 renovation of the Livermore water treatment plant was completed in April 1985. Included in the project was the installation of a new intake system.

The City of Livermore Gas Department recently completed the rerouting of a 2-inch gas line. The \$6,000 project was completed in 1984.

The reconstruction of a section of Walnut Street, in Calhoun, was completed in 1984. The \$43,000 project included street improvements and addition of curbs and gutters.

A 14-unit senior citizens' complex, in Livermore, was completed in 1984 at a cost of \$400,000.

The McLean County School System recently revised the student discipline code and the teacher evaluation system.

The renovation of the Livermore city hall was finished in Spring 1985.

A 12-unit apartment complex, in Livermore, was completed in 1984.

A U.S. Post Office, in Livermore, was renovated in Spring 1985.

### **Under Way**

Construction of a new post office, in Sacramento, was started in Summer 1985 and will be completed in Fall 1985.

Construction of a \$109,000 county maintenance garage is currently under way with a scheduled completion date of Fall 1985.

Keep America Beautiful, recently implemented in Livermore, is an ongoing project used to keep the community clean.

### **Planned**

The city of Sacramento plans to build a 62,000-gallon-per-day lagoon system sewerage treatment plant. Construction is to start in Summer 1986.

The City of Livermore Waste Water Treatment Plant plans an expansion of lines to all areas in the city. The \$800,000 expansion will start in Fall 1985 and be completed in Summer 1986.

The North McLean County Water District has plans for the construction of a 150,000 gallon storage tank and installation of 10,000 feet of 6-inch water line.

The city of Livermore has plans for a \$662,500 revitalization and renovation project which includes: the rehabilitation of 63 houses; the renovation of an old building to be used as a new library; and the addition of sewer service in different areas in the city.

Construction of a 23-unit senior citizens apartment complex in Livermore, is planned for Fall 1985.