

1997

Industrial Resources: Meade County - Brandenburg

Kentucky Library Research Collections
Western Kentucky University, spcol@wku.edu

Follow this and additional works at: https://digitalcommons.wku.edu/meade_cty



Part of the [Business Administration, Management, and Operations Commons](#), [Growth and Development Commons](#), and the [Infrastructure Commons](#)

Recommended Citation

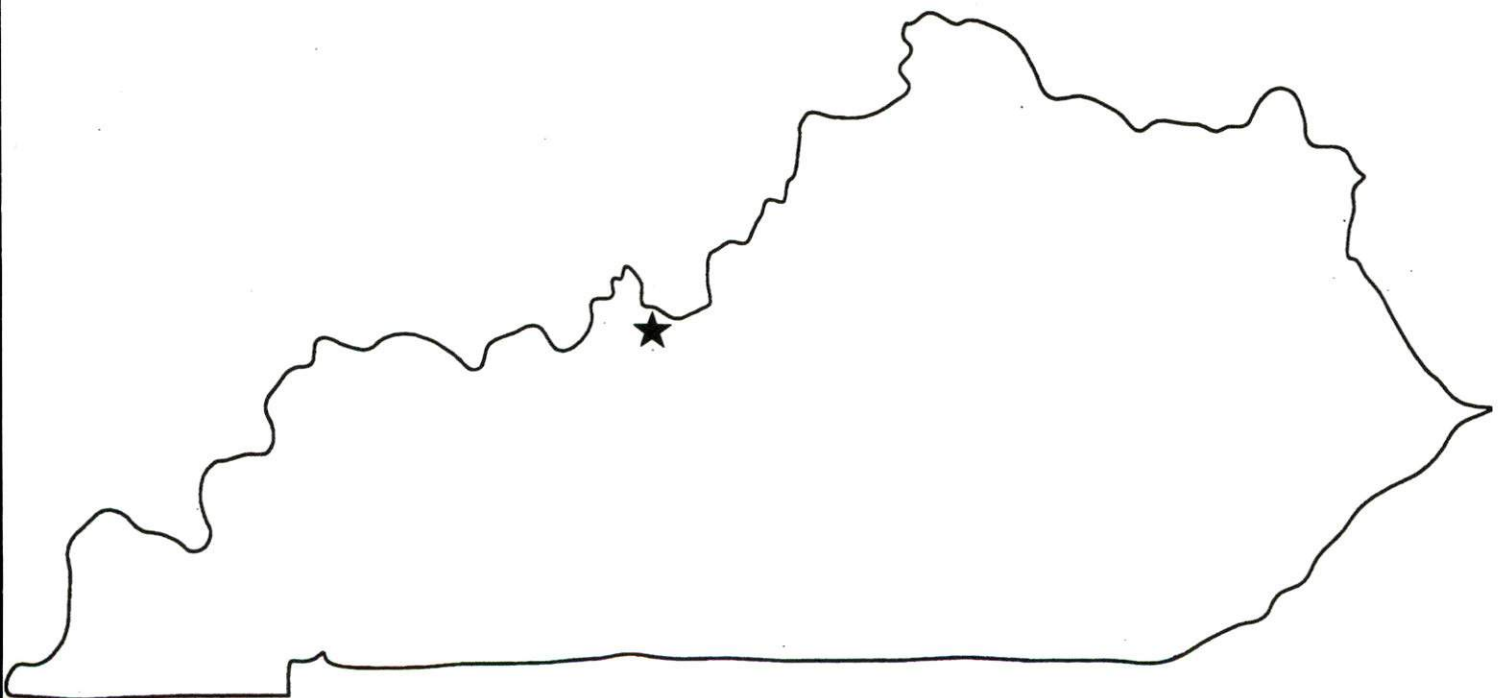
Kentucky Library Research Collections, "Industrial Resources: Meade County - Brandenburg" (1997). *Meade County*. Paper 2.
https://digitalcommons.wku.edu/meade_cty/2

This Report is brought to you for free and open access by TopSCHOLAR®. It has been accepted for inclusion in Meade County by an authorized administrator of TopSCHOLAR®. For more information, please contact topscholar@wku.edu.

Kentucky

**Resources For
Economic Development**

Brandenburg



Prepared by
The Kentucky Cabinet for Economic Development
Division of Research
in cooperation with
Meade County-Brandenburg Industrial Development Authority

1997

Division Director - Rene' True; program manager - Keith Roberts; research - Keith Roberts; clerical - Wanda Sharp; graphics - Robert Owens. Cost of printing paid from state funds.

TABLE OF CONTENTS

<u>Chapter</u>	<u>Page</u>
BRANDENBURG, KENTUCKY-A RESOURCE PROFILE.....	1
THE LABOR MARKET STATISTICS.....	2
Labor Market Area Map.....	2
Population.....	3
Population Projections.....	3
Estimated Labor Supply.....	3
Labor Force Characteristics of Residents, 1995.....	4
Selected Components of Nonagricultural Employment, by Place of Work, 1995.....	5
Per Capita Personal Income.....	6
Average Placement Wages.....	7
Average Weekly Wages of Workers Covered by Unemployment Insurance 1994 - Bar Chart.....	8
Average Weekly Wages by Industry, by Place of Work, 1994.....	9
EXISTING INDUSTRY.....	10
Brandenburg Manufacturing Firms, Their Products and Employment.....	10
Labor Organizations in Manufacturing Firms.....	10
Selected Industrial Services.....	11
TRANSPORTATION.....	12
Highways.....	12
Truck Service.....	12
Selected Market Location Map.....	13
Rail.....	14
Air.....	14
Water.....	15
UTILITIES.....	16
Electricity.....	16
Natural Gas.....	16
Public Water Supply.....	17
Raw Water.....	17
Sewerage.....	17
CLIMATE.....	18

<u>Chapter</u>	<u>Page</u>
LOCAL GOVERNMENT.....	19
Structure.....	19
Planning and Zoning.....	19
Local Fees and Licenses.....	19
State and Local Property Taxes.....	20
EDUCATION.....	21
Public Schools.....	21
Nonpublic Schools.....	21
Area Colleges and Universities.....	21
Vocational Training.....	23
OTHER LOCAL FACILITIES.....	24
Local Medical Personnel.....	24
Hospitals.....	24
Other Medical Facilities and Services.....	24
Banks and Savings & Loan Associations.....	24
Newspapers.....	24
Telephone Service.....	24
RECREATION.....	25

GENERAL HIGHWAY MAP
MEADE COUNTY
KENTUCKY

PREPARED BY THE
KENTUCKY TRANSPORTATION CABINET
DEPARTMENT OF HIGHWAYS
DIVISION OF PLANNING
IN COOPERATION WITH THE
U.S. DEPARTMENT OF TRANSPORTATION
FEDERAL HIGHWAY ADMINISTRATION

0 1 2 3 4 MILES
INCHES



BRANDENBURG, KENTUCKY - A RESOURCE PROFILE

Brandenburg, the county seat of Meade County, is situated on the south bank of the Ohio River in north-central Kentucky. Brandenburg is located 46 miles southwest of Louisville, Kentucky; 147 miles southwest of Cincinnati, Ohio; and 162 miles north of Nashville, Tennessee. Brandenburg had an estimated 1994 population of 3,000 persons.

Meade County covers a land area of 308 square miles. The Ohio River forms the entire northern boundary of the county. Meade County had an estimated 1994 population of 26,142 persons.

The Economic Framework - The total number of Meade County residents employed in 1995 averaged 9,041. Wholesale and retail trade provided 991 jobs; 427 people were employed in service occupations; state and local government accounted for 657 employees; and contract construction firms provided 180 jobs.

Labor Supply - There is a current estimated labor supply of 13,567 persons available for industrial jobs in the labor market area. In addition, from 1997 through 2001, 10,613 young persons in the area will become 18 years of age and potentially available for industrial jobs.

Transportation - AAA-rated trucking highways serving Meade County include U.S. Highway 60, and Kentucky Routes 79 and 448. Interstate 64 is accessible 19 miles north of Brandenburg. Interstate 65 and two of Kentucky's parkways are accessible 34 miles southeast of the city. Fourteen common carrier trucking companies provide interstate and/or intrastate service to Brandenburg. CSX Transportation provides main line rail service to Brandenburg. The nearest scheduled commercial airline service is available at the Louisville International Airport, 50 miles northeast. The Breckinridge County Airport, 29 miles south of Brandenburg, maintains a 3,500-foot runway and Addington Field, 38 miles southeast of Brandenburg, maintains a 5,000-foot runway. The Ohio River forms the northern boundary of Meade County where a nine-foot navigation channel is maintained.

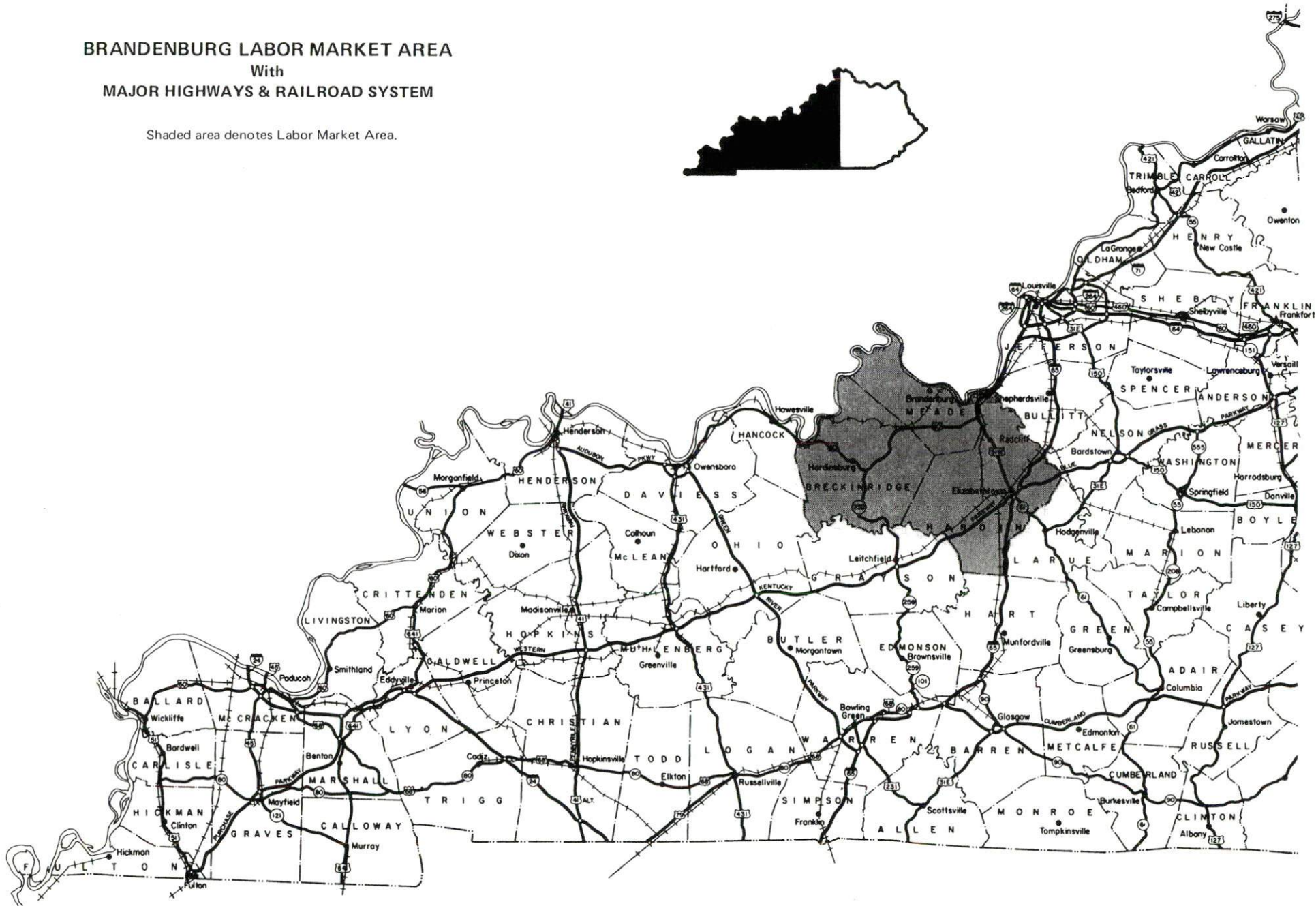
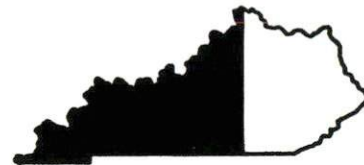
Power and Fuel - Electric power is provided to Brandenburg and Meade County by the Louisville Gas and Electric Company and the Meade County Rural Electric Cooperative Corporation. Natural gas service is provided by the Louisville Gas and Electric Company.

Education - Primary and secondary education is provided to Brandenburg and Meade County by the Meade County School System. Six colleges and universities are located within 50 miles of Brandenburg. Vocational training is available at the Elizabethtown Regional Technology Center, 34 miles southeast of Brandenburg, and locally at the Meade County Area Technology Center.

BRANDENBURG LABOR MARKET AREA

With
MAJOR HIGHWAYS & RAILROAD SYSTEM

Shaded area denotes Labor Market Area.



LABOR MARKET STATISTICS

The Brandenburg Labor Market Area includes Meade County and the adjoining Kentucky counties of Breckinridge and Hardin. Although not included in the statistics below, the Brandenburg Labor Market Area is supplemented by the Indiana county of Harrison, across the Ohio River from Brandenburg.

POPULATION

	<u>1994*</u>	<u>1990</u>	<u>1980</u>	<u>1970</u>
Labor Market Area	133,037	129,722	128,626	112,006
Brandenburg	3,000	1,857	1,831	1,637
Meade County	26,142	24,170	22,854	18,796

*Population estimates.

Source: U.S. Department of Commerce, Bureau of the Census.

POPULATION PROJECTIONS

	<u>2000</u>	<u>2010</u>	<u>2020</u>
Labor Market Area	141,407	150,980	157,441
Meade County	27,910	29,675	30,860

Note: Population projections are from High Growth Series forecast.

Source: University of Louisville, Urban Studies Center, State Data Center.

ESTIMATED LABOR SUPPLY

	<u>Current</u>			<u>Future</u>
	<u>Total</u>	<u>Unemployed</u>	<u>Not in Labor Force</u>	<u>Becoming 18 years of age 1997 thru 2001</u>
Labor Market Area*	13,567	3,044	10,523	10,613
Meade County	3,833	508	3,325	2,331

* Additional workers may be drawn from other nearby counties.

Note: Unemployed - persons unemployed and actively seeking work; Not in Labor Force - represents the number of persons who would enter the labor force if suitable employment were available (based on the assumption that persons in Kentucky would like to participate in the labor force in the same proportion that they do nationally). Underemployed persons (employed only 14 to 26 weeks during the year) are no longer included in labor surplus estimates.

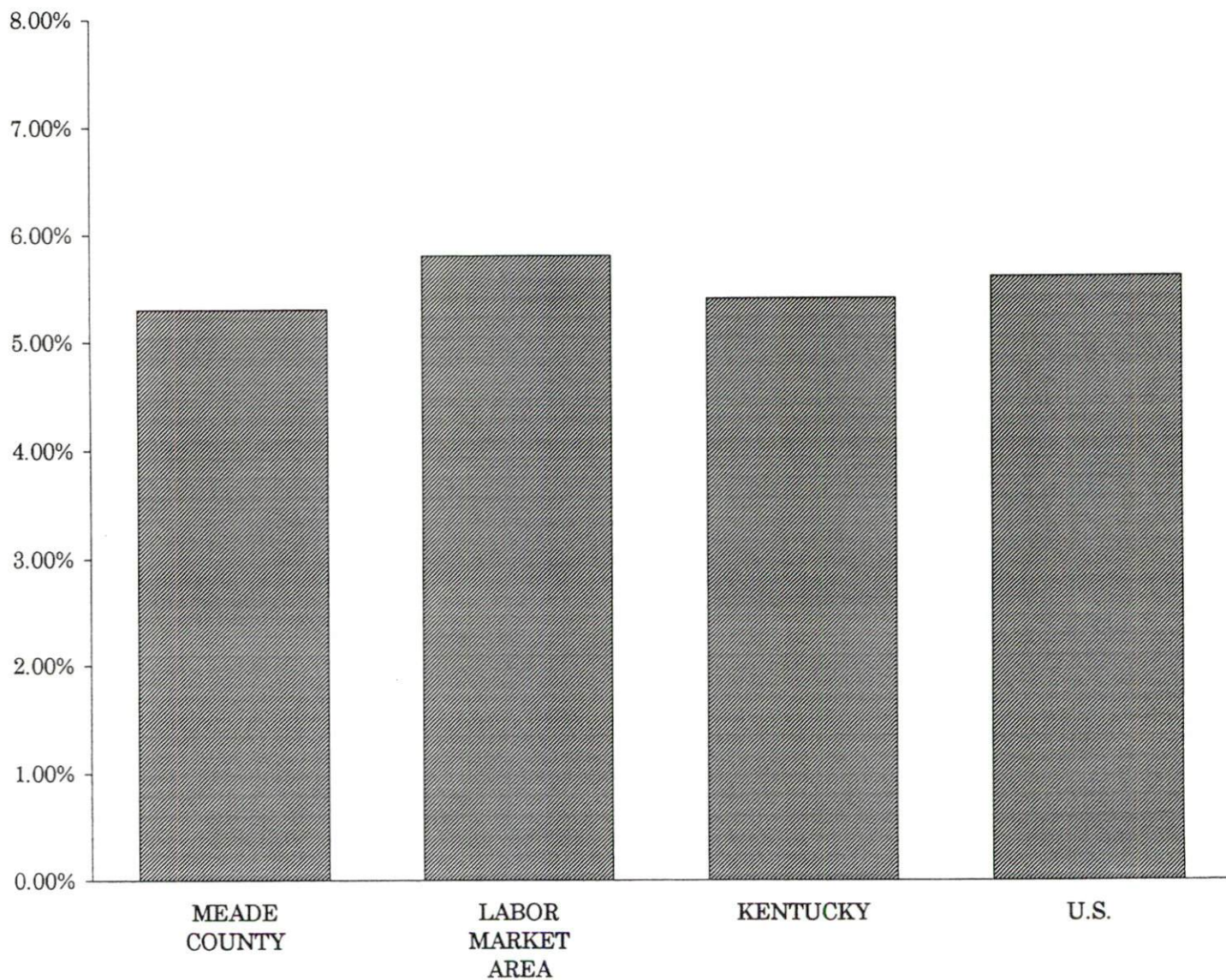
Sources: Kentucky Workforce Development Cabinet, Kentucky Labor Surplus Estimates by County, 1995. Kentucky Cabinet for Economic Development, Future Labor Supply Becoming 18 Years of Age, 1997 thru 2001.

LABOR FORCE CHARACTERISTICS OF RESIDENTS, 1995

	<u>Meade County</u>	<u>Labor Market Area</u>
Civilian Labor Force	9,549	52,226
Employment	9,041	49,182
Unemployment	508	3,044
Rate of Unemployment (%)	5.3	5.8

Source: Kentucky Workforce Development Cabinet, Kentucky Labor Force Estimates, Annual Averages 1995.

UNEMPLOYMENT RATES 1995



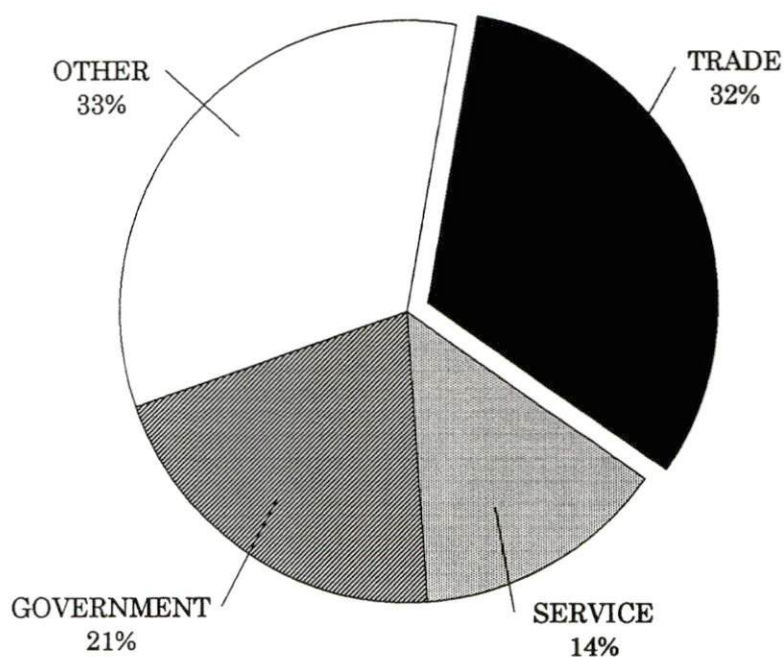
SELECTED COMPONENTS OF NONAGRICULTURAL EMPLOYMENT
BY PLACE OF WORK, 1995

	<u>Meade County</u>	<u>Labor Market Area</u>
All Industries (total)	3,174	34,885
Manufacturing	N/A	6,312
Wholesale & Retail Trade	991	9,955
Services	427	6,579
State/Local Government	657	6,273
Contract Construction	180	1,873

Note: Excludes domestic workers, railway workers, certain nonprofit corporations, majority of federal government workers, and self-employed workers.

Source: Kentucky Workforce Development Cabinet, Average Monthly Workers Covered by Kentucky Unemployment Insurance Law, 1995.

MEADE COUNTY

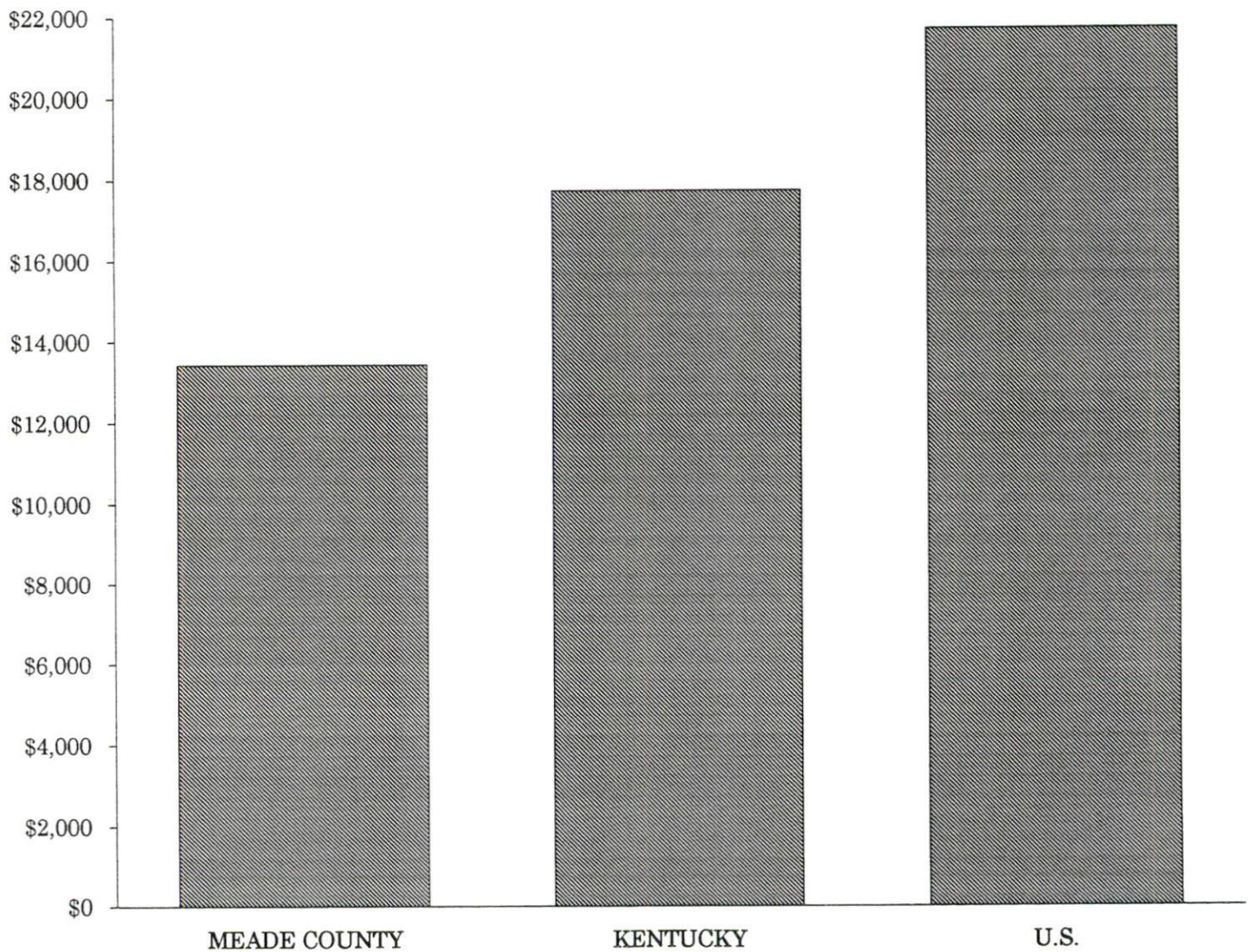


PER CAPITA PERSONAL INCOME

<u>Area</u>	<u>1990</u>	<u>1994</u>	<u>Percent Change</u>
Meade County	\$11,872	\$13,425	13.1
Labor Market Area Range	\$11,301 - \$12,972	\$13,425 - \$15,300	-
Kentucky	\$14,747	\$17,721	20.2
U.S.	\$18,666	\$21,696	16.2

Source: U.S. Department of Commerce, Bureau of Economic Analysis, Regional Economic Information System.

PER CAPITA PERSONAL INCOME 1994



AVERAGE PLACEMENT WAGES

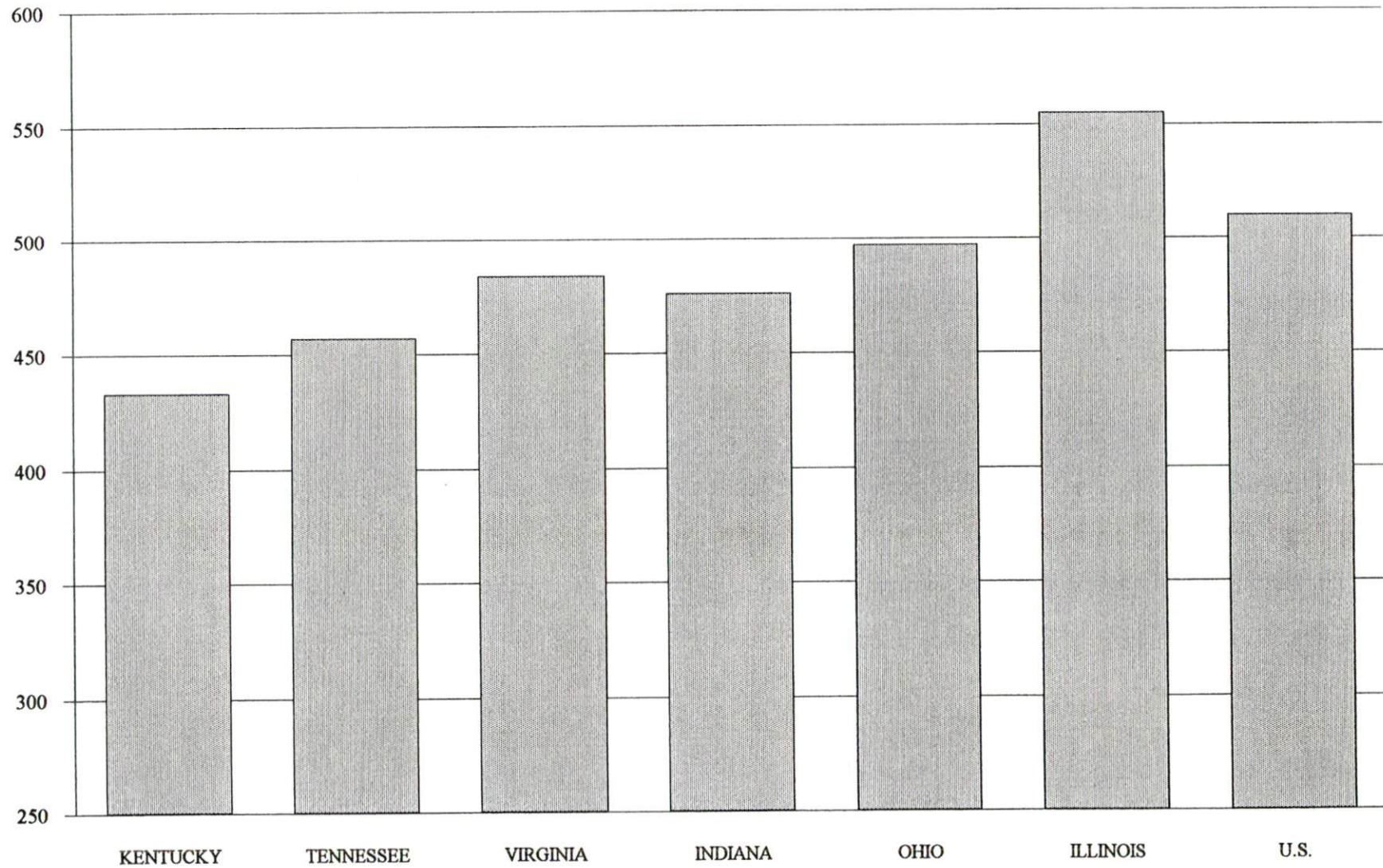
Meade County is served by the Elizabethtown local office of the Kentucky Department for Employment Services. The focus of the following data is on job placements made by the Elizabethtown local office and may therefore be used as an indicator of the wages which employers in the area pay new employees. During the twelve months which ended on June 30, 1996, the local employment office filled 2,931 job openings in various occupational categories. The average hourly wage for selected occupational categories were:

<u>OCCUPATIONAL CATEGORY</u>	<u>NUMBER OF PLACEMENTS</u>	<u>AVERAGE WAGE(\$)</u>
All Occupations	2,931	6.57
Clerical	337	5.54
Sales	100	5.41
Services (excluding domestic)	409	5.10
Agricultural, Fishery, Forestry, etc.	37	5.33
Processing	24	6.19
Machine Trades	1,070	7.71
Bench Work	243	5.69
Structural	243	8.23
Motor Freight/ Transportation	82	5.57
Packaging and Materials Handling	311	5.43
Other	7	5.96

The Elizabethtown local office also serves Breckinridge, Grayson, Hardin, and Larue Counties. The above occupational categories are taken from the Dictionary of Occupational Titles published by the U.S. Department of Labor.

Source: Kentucky Workforce Development Cabinet, Department for Employment Services.

**AVERAGE WEEKLY WAGES OF WORKERS COVERED BY
UNEMPLOYMENT INSURANCE - 1994**



AVERAGE WEEKLY WAGES BY INDUSTRY
BY PLACE OF WORK, 1994*

	<u>Meade County</u>	<u>Kentucky (Statewide)</u>	<u>Tennessee</u>	<u>Virginia</u>
All Industries	\$422.47	\$432.45	\$457.00	\$484.00
Mining & Quarrying	N/A	724.79	638.00	721.00
Contract Construction	264.08	457.02	485.00	476.00
Manufacturing	N/A	560.04	540.00	565.00
Transportation, Communications & Public Utilities	588.86	573.31	588.00	673.00
Wholesale & Retail Trade	241.41	297.57	N/A	N/A
Finance, Insurance & Real Estate	330.52	521.15	585.00	609.00
Services	225.44	385.62	434.00	501.00
State/Local Government	457.06	441.53	N/A	N/A
	<u>Indiana</u>	<u>Ohio</u>	<u>Illinois</u>	<u>U. S.</u>
All Industries	\$476.00	\$497.00	\$555.00	\$510.00
Mining & Quarrying	771.00	682.00	815.00	839.00
Contract Construction	538.00	549.00	681.00	544.00
Manufacturing	653.00	701.00	692.00	645.00
Transportation, Communications & Public Utilities	581.00	619.00	694.00	658.00
Wholesale & Retail Trade	N/A	N/A	N/A	N/A
Finance, Insurance & Real Estate	557.00	572.00	764.00	693.00
Services	400.00	433.00	501.00	483.00
State/Local Government	N/A	N/A	N/A	N/A

* Wages for U.S. and surrounding states rounded to nearest dollar.

N/A Not Available.

Note: The average weekly wage for each category includes the salaries and wages of all persons working for that type business. For example, the manufacturing category includes both production workers and administrative personnel. Excludes domestic workers, railway workers, certain nonprofit corporations, majority of federal government workers, and self-employed workers.

Sources: Kentucky Workforce Development Cabinet, Average Weekly Wages of Workers Covered by Kentucky Unemployment Insurance Law, 1994. U.S. Department of Labor, Bureau of Labor Statistics, Employment and Wages, Annual Averages, 1994, November 1995.

EXISTING INDUSTRY

BRANDENBURG MANUFACTURING FIRMS, THEIR PRODUCTS AND EMPLOYMENT

<u>Firm</u> <u>(Establishment date)</u>	<u>Product</u>	1996 <u>Average Employment</u>
Bryan Engineering & Manufacturing Company, Inc. (1991)	Flatbed and utility trailers	10
Meade County Messenger (1892)	Newspaper	15
Meade County Ready Mix, Inc. (1959)	Ready-Mixed concrete	15
Myers Concrete Products (1992)	Precast concrete products	4
Olin Corporation (1952)	Surface active agents and polyols, glycol ethers and industrial chemicals	450
P.P.C., Inc., Powers Paper Company (1996)	Masking paper	25

Sources: Kentucky Cabinet for Economic Development, Division of Research; Meade County-Brandenburg Industrial Development Authority.

LABOR ORGANIZATIONS IN MANUFACTURING FIRMS

<u>Union</u>	<u>Representing workers at:</u>
International Brotherhood of Electrical Workers, AFL-CIO; International Brotherhood of Firemen and Oilers, AFL-CIO; United Association of Journeymen and Apprentices of the Plumbing and Pipe Fitting Industry of the United States and Canada, AFL-CIO	Olin Corporation

SELECTED INDUSTRIAL SERVICES

<u>Types of Services</u>	<u>Location</u>	<u>Mileage from Brandenburg</u>
Custom Plastics Producers	Radcliff, Kentucky	24
Electric Motor Repair	Elizabethtown, Kentucky	34
Heat Treating Facilities	Louisville, Kentucky	46
Industrial Waste Removal	Elizabethtown, Kentucky	34
Machine Shops, Tool & Die	Elizabethtown, Kentucky	34
Metal Castings	Louisville, Kentucky	46
Metal Finishers	Elizabethtown, Kentucky	34
Metal Service Centers	Elizabethtown, Kentucky	34
Millwrights & Riggers	Louisville, Kentucky	46

Source: Kentucky Cabinet for Economic Development, Division of Research.

TRANSPORTATION

Highways

Principal highways directly serving the city of Brandenburg are Kentucky Routes 79 and 448, both AAA-rated (80,000-pound gross load limit) trucking highways. The major highway serving Meade County is U.S. Highway 60. Access to U.S. 60 is 11 miles southeast of Brandenburg via Kentucky 448. Kentucky Route 1638, a AA-rated (62,000-pound gross load limit) trucking highway, also serves Brandenburg and provides access to U.S. 31W, 17 miles southeast of the city.

Interstate 64, a major east-west corridor, is accessible 19 miles north of Brandenburg via Indiana State Route 135. Access to Interstate 65 and two of Kentucky's multi-lane parkways, the Blue Grass Parkway and the Western Kentucky Parkway, is available 34 miles southeast of Brandenburg at Elizabethtown, Kentucky.

HIGHWAY MILES FROM BRANDENBURG, KENTUCKY, TO SELECTED MARKET CENTERS

City	Highway Miles	City	Highway Miles
Atlanta, GA	387	Los Angeles, CA	2,100
Baltimore, MD	646	Louisville, KY	46
Birmingham, AL	349	Nashville, TN	162
Chicago, IL	329	New Orleans, LA	684
Cincinnati, OH	147	New York, NY	806
Cleveland, OH	394	Pittsburgh, PA	434
Detroit, MI	407	St. Louis, MO	255
Knoxville, TN	249		

Note: Mileage computations are via the best interstate or primary highways, not necessarily the most direct route of travel.

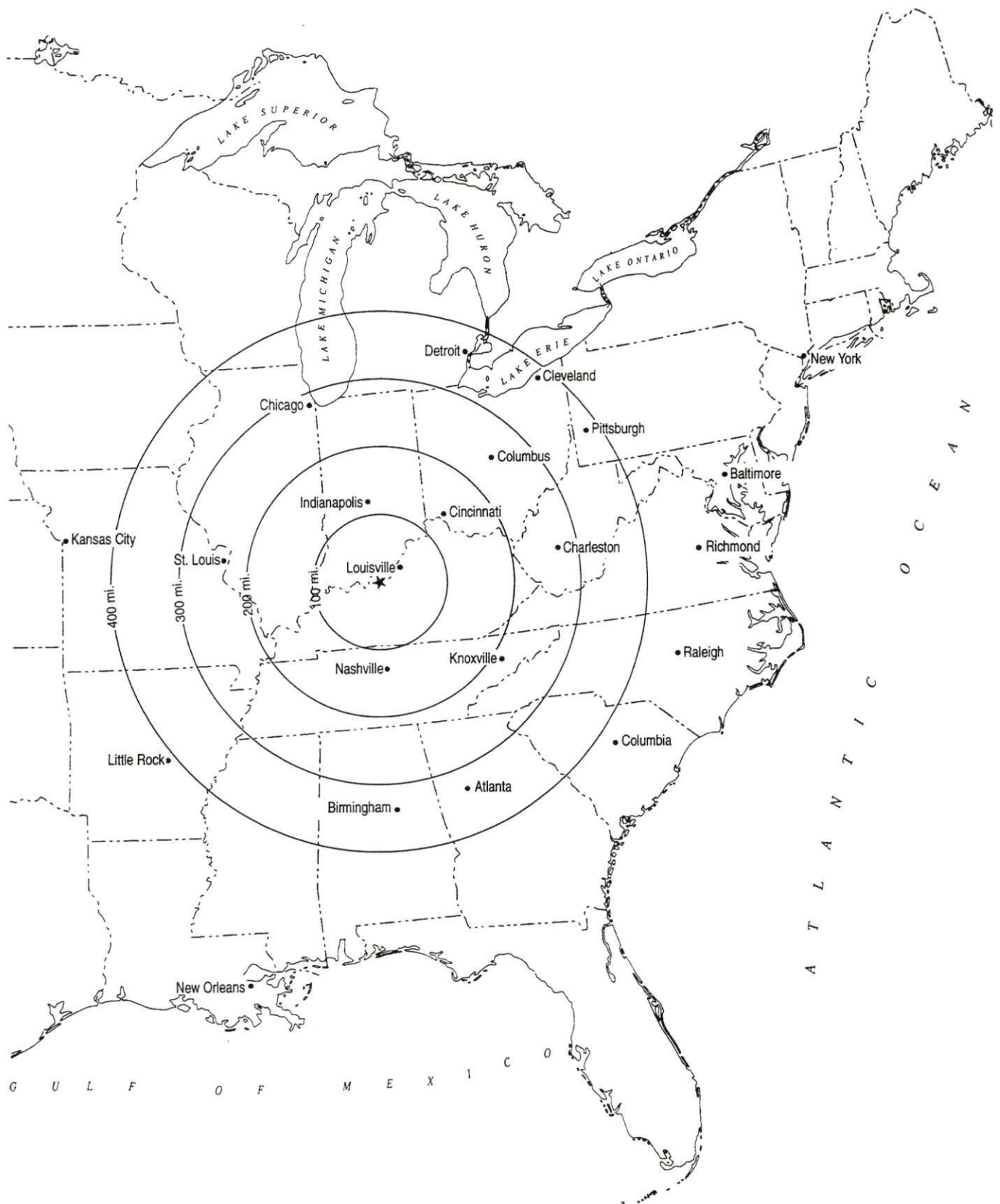
Sources: Rand McNally Standard Highway Mileage Guide, 1990. Official Kentucky Mileage Map, 1988.

Truck Service

Fourteen common carrier trucking companies provide interstate and/or intrastate service to Brandenburg.

Source: American Motor Carrier Directory, Fall 1996.

Selected Market Centers



Rail

CSX Transportation provides main line rail service to Brandenburg. CSX Transportation also provides the nearest intermodal facilities at Louisville, 46 miles northeast of Brandenburg.

For details on routing, schedules, rates, and services contact:

Manager
Industrial Development
CSX Transportation
9420 Bunsen Parkway
Suite 212
Louisville, Kentucky 40220
(502) 499-3025

Air

Nearest Small Craft Airport

Location:	Breckinridge County Airport 1 mile east of Hardinsburg; 29 miles south of Brandenburg
Runways:	1 paved
Length:	3,500 feet
Traffic	
Control:	Wind sock
Lighting:	Sunset to sunrise, beacon
Services:	Tie-downs

	Addington Field
Location:	4 miles west of Elizabethtown; 38 miles southeast of Brandenburg
Runways:	1 paved
Length:	5,000 feet
Traffic	
Control:	Unicom, wind sock
Lighting:	Runway and beacon, VASI, REILS, lighted taxiway
Services:	100 octane and jet-A fuel, charter, major A & P repairs, hangar, tie-downs, flight instruction, rental cars, FBO, CLNC 119.45
Air Freight	
Service:	Charter air freight service must be arranged

Nearest Scheduled Commercial Airline Service

Location: Louisville International Airport
4 miles southeast of center of Louisville, Kentucky;
50 miles northeast of Brandenburg

Air Service: American, America West Express, American
Eagle, ASA, Comair, Continental, Continental
Express, Delta, Northwest, Northwest Airlink,
Southwest, TWA, United, United Express,
USAir, USAir Express, Valujet

Daily Arrivals
& Departures: 210

Water

The Ohio River forms the northern boundary of Meade County. A nine-foot navigation channel is maintained on the Ohio River.

UTILITIES

Electricity

Company serving **parts of Brandenburg and Meade County** - Louisville Gas and Electric Company

Source of power - Louisville Gas and Electric Company

For industrial rates contact:

Economic Development Department
Louisville Gas and Electric Company
P.O. Box 32010
Louisville, Kentucky 40232
In Kentucky: (502) 627-3714
Out of State: (800) 252-0226

Company serving **parts of Brandenburg and Meade County** - Meade County Rural Electric
Cooperative Corporation

Source of power - Big Rivers Electric Corporation

For industrial rates contact:

Manager of Economic Development
Big Rivers Electric Corporation
P.O. Box 24
Henderson, Kentucky 42420
(502) 827-2561

and/or

Meade County Rural Electric Cooperative
Corporation
P.O. Box 489
Brandenburg, Kentucky 40108
(502) 422-2162 Fax #(502) 422-4705

Natural Gas

Company serving **Brandenburg** - Louisville Gas and Electric Company

Source of supply - Texas Gas Transmission Company

For rates and supplies contact:

Economic Development Department
Louisville Gas and Electric Company
P.O. Box 32010
Louisville, Kentucky 40232
In Kentucky: (502) 627-3714
Out of State: (800) 252-0226

Public Water Supply

Company serving **Brandenburg** - Brandenburg Water Works System
737 High Street
P.O. Box 305
Brandenburg, Kentucky 40108
(502) 422-4981 Fax (502) 422-4983

Source of raw water -	Wells
Treatment plant capacity-	500,000 gallons per day
Average daily consumption -	At capacity
Peak daily consumption -	550,000 gallons
Storage capacity -	300,000 gallons
Water pressure -	39 psi to 90 psi

The City of Brandenburg Water Works System has plans to construct a new 1.0 million gallon-per-day water treatment plant. Approximate cost of the new facility will be \$1.6 million.

Company serving **Meade County** - Meade County Water District
3600 Flaherty Road
Vine Grove, Kentucky 40175
(502) 828-3399

Source of supply of treated water -	City of Brandenburg and Hardin County Water District #1
Amount that can be purchased -	500,000 gallons per day
Average daily consumption -	280,466 gallons
Peak daily consumption -	315,000 gallons
Storage capacity -	400,000 gallons
Water pressure -	55 psi to 110 psi

Raw Water

Surface water sources - Ohio River

Average discharge - Ohio River at Louisville, Kentucky - 115,800
Cfs (67 years - USGS)

Expected ground water yield - 500 to 1,000 gpm along the Ohio River;
50 to 500 gpm in central and eastern portion of the county; 5 to
50 gpm in southern and central section of the county; 5 gpm or
less in remainder of Meade County

Sewerage

Company serving **Brandenburg** - Brandenburg Wastewater Treatment Plant
737 High Street
P.O. Box 305
Brandenburg, Kentucky 40108
(502) 422-4981 Fax (502) 422-4983

Design capacity -	400,000 gallons per day
Average daily flow -	150,000 gallons
Type of treatment -	Lagoon system
Treated effluent discharged into -	Ohio River

CLIMATE

Meade County

Temperature

Normal (30-year record)	56.10 degrees
Average annual 1994	57.40 degrees
Record highest, July 1954 (47-year record)	105.00 degrees
Record lowest, January 1994 (47-year record)	-22.00 degrees
Normal heating degree days (30-year record)	4,514
(Heating degree day totals are the sums of negative departures of average daily temperatures from 65 degrees F.)	

Precipitation

Normal (47-year record)	44.39 inches
Mean annual snowfall (30-year record)	16.40 inches
Total precipitation 1994	35.98 inches
Mean number days precipitation (.01 inch or more) (47-year record)	124.00
Mean number days thunderstorms (47-year record)	45.60

<u>Prevailing Winds</u> (through 1963)	South
--	-------

Relative Humidity (34-year record)

1 a.m.	76 percent
7 a.m.	81 percent
1 p.m.	58 percent
7 p.m.	61 percent

Source: U.S. Department of Commerce, Environmental Science Services Administration, Climatological Data, 1994. Station of record: Louisville, Kentucky.

LOCAL GOVERNMENT

Structure

The City of Brandenburg is served by a mayor and six council members. The mayor serves a four-year term and the council members serve two-year terms. Meade County is served by a county judge/executive and six magistrates. The county judge/executive and magistrates are elected to four-year terms.

Planning and Zoning

City agency - City of Brandenburg Planning & Zoning Commission

Zoning enforced - Within city limits

Subdivision regulations enforced - Within city and two miles beyond corporate limits

Mandatory state codes enforced - Kentucky Plumbing Code, National

Electric Code, Kentucky Boiler Regulations and Standards, Kentucky

Building Code (modeled after BOCA code)

Local Fees and Licenses

The City of Brandenburg levies an annual \$20 business license fee on businesses and professions operating within the city. A five percent insurance premium tax is levied on policies written within the corporate limits of the city and a \$20 unloading fee is required annually.

PROPERTY TAXES

The Kentucky Constitution requires the state to tax all classes of taxable property, and state statutes allow local jurisdictions to tax only a few classes. All locally taxed property is subject to county taxes and school district taxes (either a county school district or an independent school district). Property located inside of city limits may also be subject to city property taxes.

Special local taxing jurisdictions (fire protection districts, watershed districts, and sanitation districts) levy taxes within their operating areas (usually a small portion of community or county).

Property assessments in Kentucky are at 100% fair cash value. Accounts receivable are taxed at 85% of face value.

STATE PROPERTY TAX RATES PER \$100 VALUATION

<u>Selected Classes of Property</u>	<u>1995 State Rate</u>	<u>Local Taxation Permitted</u>
Real Estate	\$0.167	YES
Manufacturing Machinery	0.150	NO
Pollution Control Equipment	0.150	NO
Inventories		
Raw Materials	0.050	NO
Goods in Process	0.050	NO
Finished Goods	0.050	YES
Motor Vehicles	0.450	YES
Other Tangible Personal Property	0.450	YES
Intangibles (Accounts Receivable, Money on Hand)	0.250	NO

LOCAL PROPERTY TAX RATES PER \$100 VALUATION, 1995

<u>Taxing Jurisdiction</u>	<u>Real Estate</u>	<u>Finished Goods & Tangibles</u>	<u>Motor Vehicles</u>
Meade County	\$0.2179	\$0.2572	\$0.2191
School Districts:			
Meade County	0.4810	0.4810	0.5460
Cities:			
Brandenburg	0.3060	0.3970	0.3280

EDUCATION

Public Schools

Meade County

Total Enrollment (Fall, 1995)	4,330
Pupil-Teacher Ratio (1993-94)	18.7-1
Percent High School Graduates to College (1993-94)	34.3
Expenditures Per Pupil (1993-94)	\$3,118.68

The Meade County School System is in the process of constructing a new elementary school. The new school is scheduled to be completed by the Fall 1997.

Nonpublic Schools

<u>School</u>	<u>Enrollment</u>	<u>Grades</u>
St. John The Apostle Elementary	201	K-6

Area Colleges and Universities

<u>Name</u>	<u>Location (Miles distant)</u>	<u>Enrollment (Fall, 1995)</u>
Elizabethtown Community College	Elizabethtown, Kentucky (34)	3,766
Indiana University, Southeast	New Albany, Indiana (36)	5,381
University of Louisville	Louisville, Kentucky (46)	21,218
Bellarmino College	Louisville, Kentucky (46)	2,935
Spalding University	Louisville, Kentucky (46)	1,342
Jefferson Community College	Louisville, Kentucky (46)	9,273
Sullivan College	Louisville, Kentucky (46)	2,160

Elizabethtown Community College offers classes at the Meade County High School. Courses presently available include: Introduction to Communications, Writing I, Intermediate Algebra, Basic Biology, Introduction to Literature, and Introduction to Computer Applications.

Fort Knox Extension Campuses

Eight institutions of higher education operate extension campuses at Fort Knox Military Reservation, 19 miles southeast of Brandenburg. These extension campuses confer various graduate and undergraduate degrees, including doctorate degrees in policy analysis and education. The extension campuses' programs are open to the public. The extension campuses include: Central Texas College, Eastern Kentucky University, Embry Riddle Aeronautical University, Sullivan College, University of Louisville, Western Kentucky University, Elizabethtown Community College, and McKendree College.

VOCATIONAL-TECHNICAL TRAINING

Kentucky Tech schools are operated by the Cabinet for Workforce Development and provide secondary (Sec) and postsecondary (P/S) vocational-technical training.

<u>Kentucky Tech Schools</u>	<u>Location (Mileage from Brandenburg)</u>	<u>Number of Program Offerings</u>	<u>Cumulative Enrollment 1995-1996</u>		<u>Approximate Number Completing Long-Term Programs Annually</u>
Elizabethtown Regional Technology Center	Elizabethtown (34)	16	<u>Sec</u> 52	<u>P/S</u> 464	250
Meade County Area Technology Center	Brandenburg	7	<u>Sec</u> 269	<u>P/S</u> 1	100

Customized Training

The Kentucky Tech system, through its Training and Development Coordinators, will provide technical assistance and will identify and develop low-cost customized training programs and services for both established and prospective businesses. Businesses wanting to establish a customized training program should contact a Training and Development Coordinator located at the Elizabethtown Regional Technology Center.

Assessment Services

Kentucky Tech Career Connections offers to business, education, and government agencies testing packages for evaluating job applicants, selecting employees for promotional consideration, and developing training programs within the organization. A Career Connections Assessment Center is located on the campus of the Elizabethtown Regional Technology Center.

Adult Education Services

Adult education programs are available to adults who want to develop new skills, improve basic skills, or earn a high school equivalency diploma. In Brandenburg, adult basic education and adult literacy programs are administered through the Meade County Literacy Program.

Bluegrass State Skills Corporation

The Bluegrass State Skills Corporation, an independent public corporation created and funded by the Kentucky General Assembly, provides programs of skills training to meet the needs of business and industry from entry level to advanced training, and from upgrading present employees to retraining experienced workers.

The Bluegrass State Skills Corporation is a major source for skills training assistance for a new or existing company. The Corporation works in partnership with other employment and job training resources and programs, as well as Kentucky's economic development activities, to package a program customized to meet the specific needs of a company.

OTHER LOCAL FACILITIES

Local Medical Personnel

Physicians - 20	Optometrist - 1
Dentists - 6	Chiropractors - 1

Hospitals

<u>General Hospitals</u>	<u>Location (miles from Brandenburg)</u>	<u>Beds</u>
Hardin Memorial Hospital	Elizabethtown, Kentucky (34)	300
Harrison County Hospital	Corydon, Indiana (19)	68
Breckinridge Memorial Hospital	Hardinsburg, Kentucky (29)	45

Other Medical Facilities

Communicare Clinic
Hospice of Central Kentucky
Meade County Ambulance Service
(Advanced Life Support approved)
Meade County Health Department
Meade County Medical Center
Riverview Home Health Care

Banks and Savings & Loan Associations

Bank One-Elizabethtown Region
Meade County Bank

Newspapers

The Meade County Messenger (weekly)

Telephone Service

Brandenburg Telephone Company

The "911" emergency communication system is available throughout Meade County.

RECREATION

Local

Local recreation facilities in Brandenburg include a country club with a nine-hole golf course and the Meade-Olin Park which includes a swimming pool, tennis courts, ball fields, a soccer field, basketball courts, disc golf, picnic areas, a shelter area, and a playground. Flippin Run Park and Concordia Park each have boat ramps and picnic areas, plus soccer fields at Flippin Run.

Otter Creek Park, located in eastern Meade County, is a 3,600-acre woodland on the Ohio River. Facilities at the park include a restaurant; a 24-unit lodge; cottages; 165 campsites; horseback riding; swimming; hiking trails; fishing; boat ramp; tennis, basketball, and volleyball courts; ball fields; playgrounds; and picnic pavilions.

Other recreational facilities in Meade County include: the Doe Valley Golf Club, with an 18-hole golf course, restaurant, and lounge; the Doe Valley Swim and Tennis Club which has two swimming pools, tennis courts, a sand beach on Doe Valley Lake, and a restaurant/lodge; and the Hillcrest Club which offers a nine-hole golf course, swimming pool, tennis courts, and clubhouse.

A privately-owned recreation facility, The Grand Slam Fun Center, recently opened in Meade County. The new facility offers an 18-hole putt-putt golf course, batting cages, pool tables, and games.

The Town By The Riverside Festival is an annual event held in Brandenburg each September featuring an arts and crafts fair, cruise boat rides, fishing tournament, and various entertainment. Other annual events are the Meade County Fair, Down Home Days, an Old Fashioned Christmas, and an auto show.

Area (Within 60 miles)

Rough River Dam State Resort Park
Abraham Lincoln Birthplace National Historic Site
Bernheim Forest Arboretum and Nature Center
E.P. "Tom" Sawyer State Park
Major metropolitan area: Louisville, Kentucky
Mammoth Cave National Park