

1986

Industrial Resources: Nelson County - Bardstown

Kentucky Library Research Collections
Western Kentucky University, spcol@wku.edu

Follow this and additional works at: https://digitalcommons.wku.edu/nelson_cty



Part of the [Business Administration, Management, and Operations Commons](#), [Growth and Development Commons](#), and the [Infrastructure Commons](#)

Recommended Citation

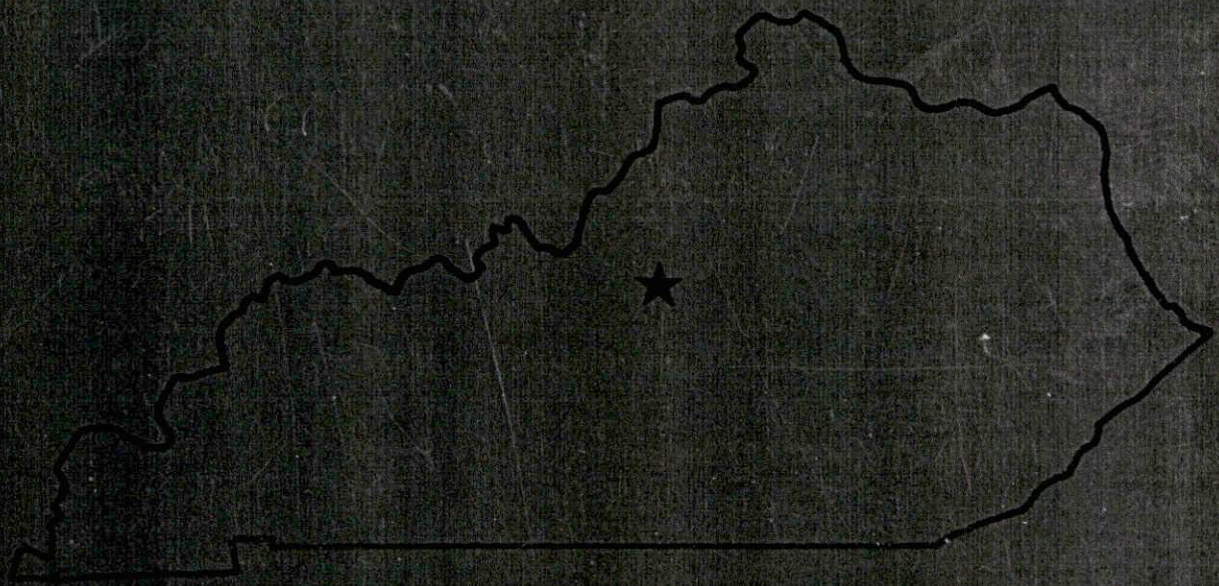
Kentucky Library Research Collections, "Industrial Resources: Nelson County - Bardstown" (1986). *Nelson County*. Paper 5.
https://digitalcommons.wku.edu/nelson_cty/5

This Report is brought to you for free and open access by TopSCHOLAR®. It has been accepted for inclusion in Nelson County by an authorized administrator of TopSCHOLAR®. For more information, please contact topscholar@wku.edu.

NELSON COUNTY

RESOURCES FOR ECONOMIC DEVELOPMENT

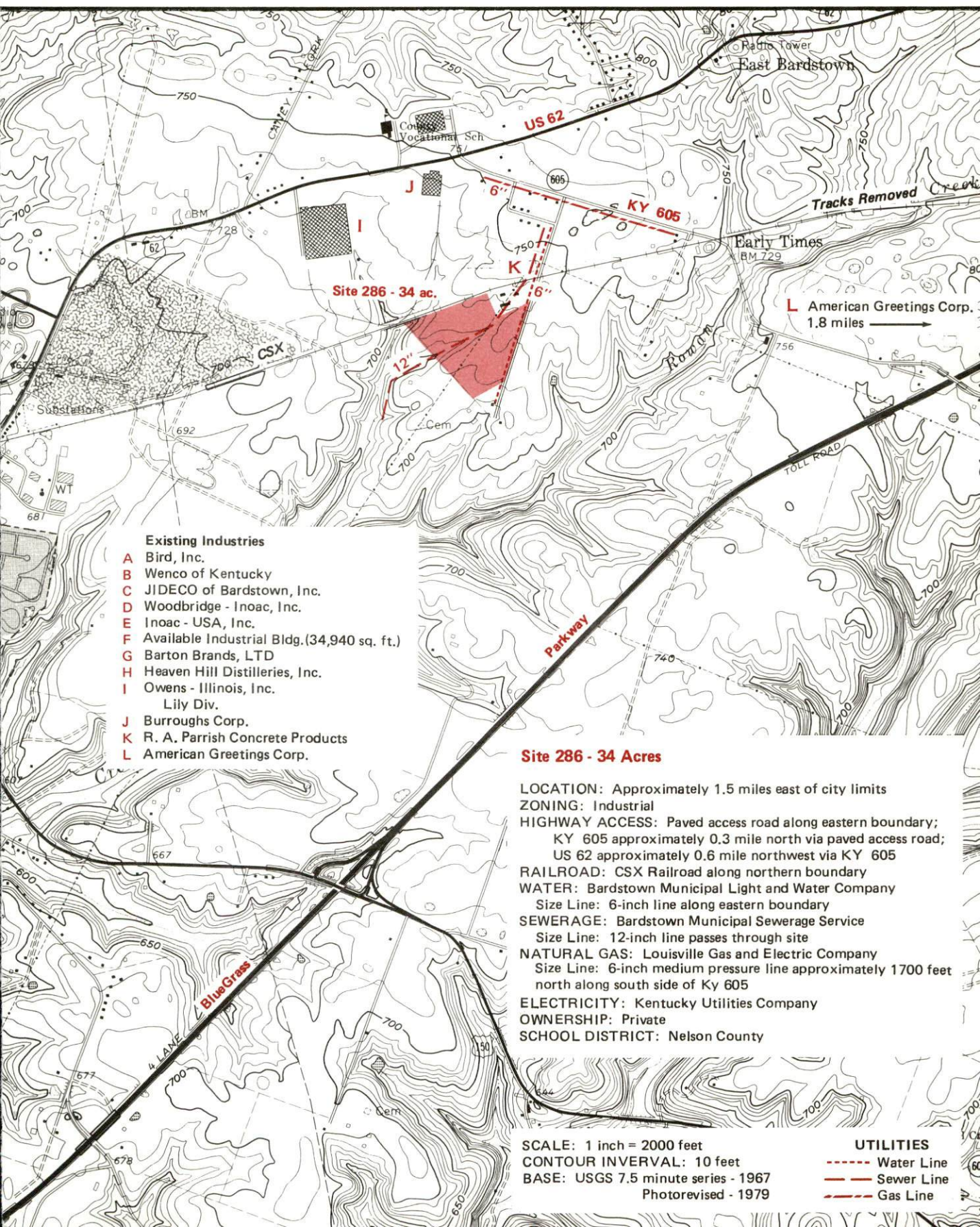
Bardstown

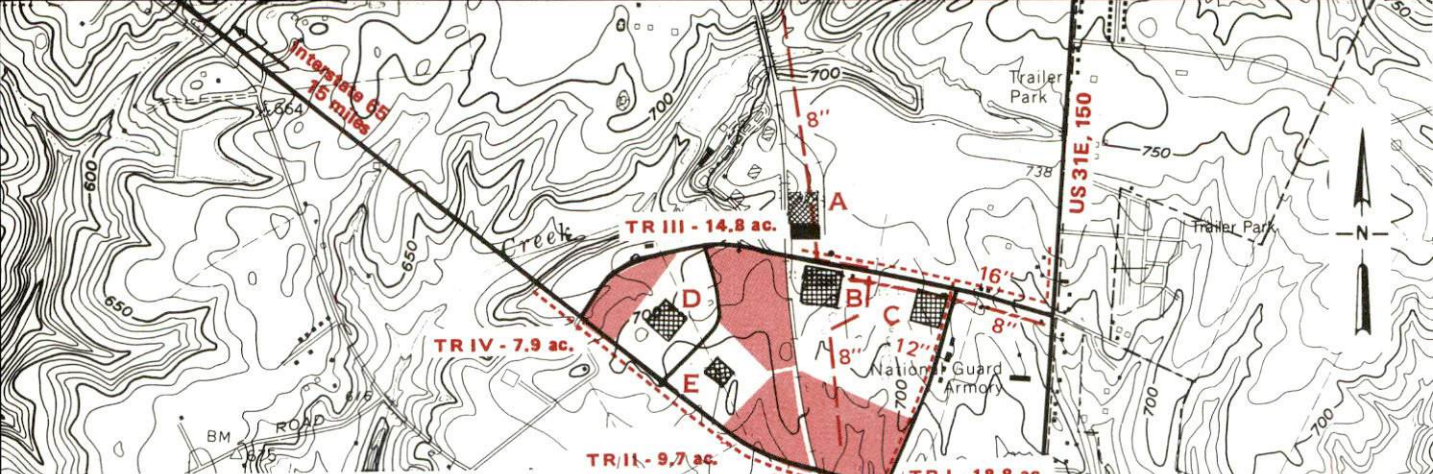


KENTUCKY
The business environment is right.

BARDSTOWN, KENTUCKY --- Industrial Sites --- 1986

For more information contact the Kentucky Department of Economic Development, Industrial Development & Marketing Division, Capital Plaza Tower, Frankfort, Kentucky 40601 (502-564-7140).





Site 186 - 51.2 Acres

Bardstown Industrial Park

LOCATION: Adjacent to northwestern city limits

ZONING: Industrial

HIGHWAY ACCESS: Park served by internal access roads; KY 245 along southern boundary; US 31E, 150 approximately 0.3 mile east via KY 245

RAILROAD: CSX Railroad passes through park

WATER: Bardstown Municipal Light and Water Company

Size Line: Park served by 12 and 16-inch lines

SEWERAGE: Bardstown Municipal Sewerage Service

Size Line: Park served by 8-inch line

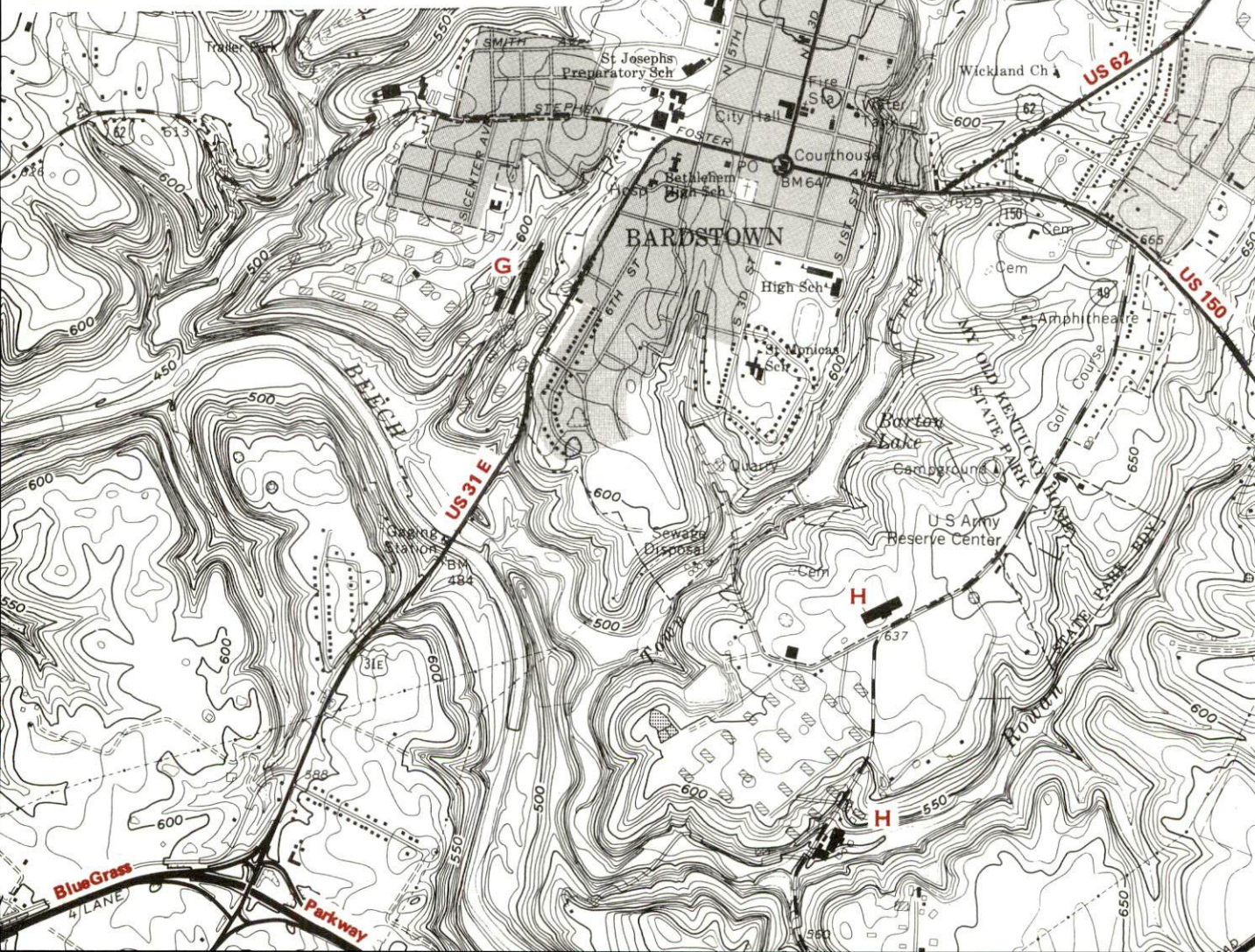
NATURAL GAS: Louisville Gas and Electric Company

Size Line: Park served by 8-inch medium pressure line

ELECTRICITY: Bardstown Municipal Light and Water Company

OWNERHSHIP: Bardstown Industrial Development Corporation

SCHOOL DISTRICT: Nelson County



RESOURCES FOR ECONOMIC DEVELOPMENT
BARDSTOWN, KENTUCKY

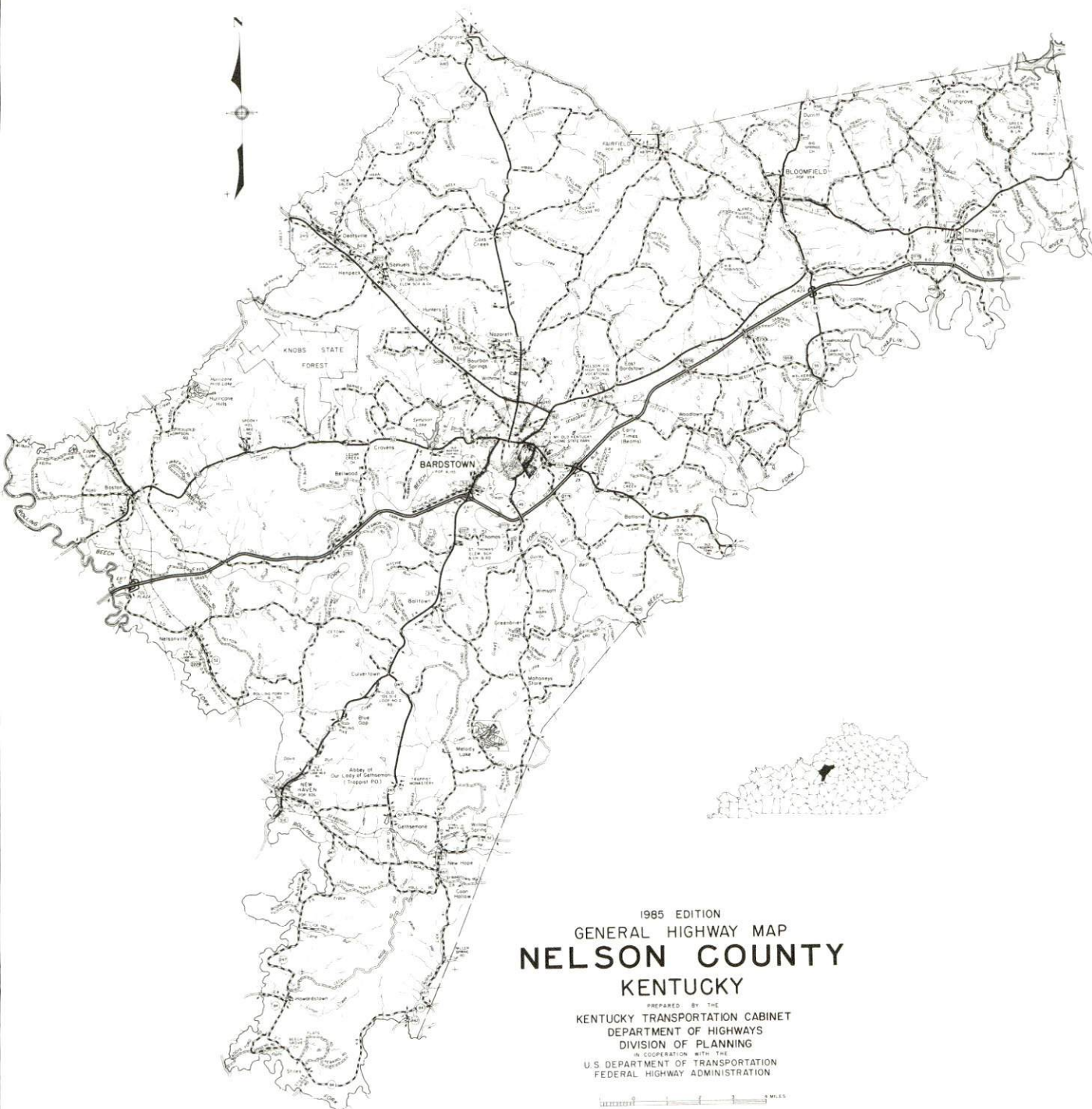
Prepared by
The Kentucky Department of Economic Development
Division of Research and Planning
in cooperation with
The Bardstown Industrial Development Corporation
and
The Bardstown/Nelson County Chamber of Commerce

1986

TABLE OF CONTENTS

<u>Chapter</u>	<u>Page</u>
INDUSTRIAL SITES	i
BARDSTOWN, KENTUCKY - A RESOURCE PROFILE	1
LABOR MARKET STATISTICS	2
Population	2
Population Projections	2
Labor Force Characteristics of Residents, 1985	3
Selected Components of Nonagricultural Employment, by Place of Work, 1985	3
Per Capita Personal Income	3
Estimated Male Labor Supply	4
Estimated Female Labor Supply	4
Average Weekly Wages By Industry, by Place of Work, 1985	5
EXISTING INDUSTRY	7
Nelson County Manufacturing Firms, Their Products and Employment	7
Recent Industrial Developments	10
Labor Organizations in Manufacturing Firms	10
Industrial Services	11
TRANSPORTATION	12
Rail	12
Highways	12
Truck Service	13
Air	14
Air Express Service	15
Taxi	15
Rental Services	15
Water	15
POWER AND FUEL	16
Electricity	16
Natural Gas	17
Other Fuels	17
WATER AND SEWERAGE	18
Public Water Supply	18
Sewerage	19

<u>Chapter</u>	<u>Page</u>
CLIMATE	20
LOCAL GOVERNMENT	21
Structure	21
Planning and Zoning	21
Local Fees and Licenses	21
State and Local Property Taxes	22
Safety	23
Police	23
Fire	23
Refuse Collection and Disposal	23
EDUCATION	24
Public Schools	24
Nonpublic Schools	24
Area Colleges and Universities	25
Vocational Training	25
HEALTH	27
Local Medical Personnel	27
Hospitals	27
Other Medical Facilities	27
Ambulance Service	27
OTHER LOCAL FACILITIES	28
Communications	28
Library Services	28
Religious Institutions	28
Financial Institutions	29
Hotels and Motels	29
Clubs and Organizations	30
RECREATION	31
COMMUNITY IMPROVEMENTS	33



1985 EDITION
GENERAL HIGHWAY MAP
NELSON COUNTY
KENTUCKY

PREPARED BY THE
KENTUCKY TRANSPORTATION CABINET
DEPARTMENT OF HIGHWAYS
DIVISION OF PLANNING
IN COOPERATION WITH THE
U.S. DEPARTMENT OF TRANSPORTATION
FEDERAL HIGHWAY ADMINISTRATION

0 1 2 3 4 5 6 7 8 9 10 MILES

BARDSTOWN LABOR MARKET AREA
With
MAJOR HIGHWAYS & RAILROAD SYSTEM

Shaded area denotes Labor Market Area.

The map displays the Bardstown Labor Market Area, which is shaded in gray. This area includes parts of Jefferson, Spencer, Anderson, Nelson, Washington, and Marion counties. Major highways are shown as solid lines with route numbers, and the railroad system is indicated by dashed lines. The map also shows the surrounding counties and major cities in the region, including Louisville, Lexington, and Knoxville. A legend in the top right corner states: "Shaded area denotes Labor Market Area."

BARDSTOWN, KENTUCKY - A RESOURCE PROFILE

Bardstown, the county seat of Nelson County and home of My Old Kentucky Home, is a 1985 "Kentucky Certified City" and recipient of the "Silver Award" for being recognized three consecutive years. Located in the outer Bluegrass Region of central Kentucky, Bardstown is only 41 miles south of Louisville, Kentucky; 58 miles west of Lexington, Kentucky; and 158 miles northeast of Nashville, Tennessee. In 1984, Bardstown had an estimated population of 6,803. Nelson County, with a topography that varies from nearly flat to rolling hills, had a 1984 estimated population of 28,665.

The Economic Framework - The total number of Nelson County residents employed in 1985 averaged 12,250. Manufacturing firms in the county reported 2,150 employees; wholesale and retail trade provided 1,656 jobs; 970 people were employed in service occupations; state and local government accounted for 820 employees; and contract construction firms provided 370 jobs.

Labor Supply - There is a current estimated labor supply of 11,270 men and 12,115 women available for industrial jobs in the labor market area. In addition, from 1986 through 1990, 9,740 young men and 9,390 young women in the area will become 18 years of age and potentially available for industrial jobs.

Transportation - Rail service is provided to Bardstown by CSX Transportation. Highways serving Bardstown are the Blue Grass Parkway, U.S. 62, U.S. 31-E, U.S. 150, Kentucky 49, and Kentucky 245. Interstate 65 is located 23 miles west of Bardstown via the Bluegrass Parkway, or 17 miles north of Bardstown via Kentucky 245. Ten common carriers provide Bardstown with interstate and intrastate service. Samuels Field, 2 miles west of Bardstown, has a 4,000-foot paved runway. The nearest scheduled commercial airline service is at Standiford Field, 5 miles southeast of Louisville, 36 miles north of Bardstown.

Power and Fuel - Electric power is provided to Bardstown by the Bardstown Municipal Electric Department, which is supplied by Kentucky Utilities Company. Nelson County is provided electric power by Kentucky Utilities Company and Salt River Rural Electric Cooperative Corporation. Natural gas is provided to Bardstown by the Louisville Gas and Electric Company, which is supplied by the Texas Gas Transmission Corporation. Three distributors of propane and four distributors of distillate fuel oil serve Bardstown.

Education - Primary and secondary education is provided by the Bardstown Independent School System and the Nelson County School System. Both schools are accredited by the Southern Association of Colleges and Schools.

Two universities, four senior colleges, and two community colleges are located within 45 miles of Bardstown.

Vocational education training is available at the Nelson County Area Vocational Education Center in Bardstown and the Elizabethtown State Vocational-Technical School in Elizabethtown, 26 miles west.

LABOR MARKET STATISTICS

The Bardstown Labor Market Area includes Nelson County and the adjoining Kentucky counties of Anderson, Bullitt, Hardin, Larue, Marion, Spencer and Washington.

POPULATION				
Area	1984*	1980	1970	Percent Nonwhite 1980
Bardstown	6,803	6,155	5,816	17.8
Labor Market Area	223,236	218,939	180,948	N/A
Nelson County	28,665	27,584	23,477	6.6
Anderson County	13,334	12,567	9,358	3.9
Bullitt County	44,760	43,346	26,090	0.8
Hardin County	90,231	88,917	78,421	14.7
Larue County	12,002	11,922	10,672	4.7
Marion County	17,747	17,910	16,714	8.0
Spencer County	6,107	5,929	5,488	2.7
Washington County	10,390	10,764	10,728	10.3

* Population estimates.

Note: The 1980 city counts of population by race are provisional.

Sources: U.S. Department of Commerce, Bureau of the Census, 1980 Census of Population and Housing, March 1981; 1980 Census of Population, Number of Inhabitants. University of Louisville, Urban Studies Center, Population Unit, October 1985; Kentucky Population Research Notes, Issue Number One, May 1985.

POPULATION PROJECTIONS				
Area	1990	1995	2000	2010
Labor Market Area	240,998	255,773	268,929	292,536
Nelson County	30,560	32,066	33,229	35,111
Anderson County	14,495	15,438	16,166	17,250
Bullitt County	49,227	53,070	56,362	60,940
Hardin County	99,335	106,939	114,333	129,797
LaRue County	12,493	12,828	13,012	13,232
Marion County	18,232	18,639	18,939	19,367
Spencer County	6,248	6,353	6,436	6,432
Washington County	10,408	10,440	10,452	10,407

Source: University of Louisville, Urban Studies Center, Population Research Unit, How Many Kentuckians: Population Forecasts, 1980-2020, the 1986 Edition, Spring 1986.

LABOR FORCE CHARACTERISTICS OF RESIDENTS, 1985

	<u>Nelson County</u>	<u>Labor Market Area</u>
Civilian Labor Force	13,863	97,339
Employment	12,251	88,310
Unemployment	1,612	9,029
Rate of Unemployment (%)	11.6	9.3

Source: Kentucky Cabinet for Human Resources, Kentucky Labor Force Estimates, Annual Averages, 1985.

SELECTED COMPONENTS OF NONAGRICULTURAL EMPLOYMENT,
BY PLACE OF WORK, 1985

	<u>Nelson County</u>	<u>Labor Market Area</u>
All Industries (total)	6,581	40,173
Manufacturing	2,149	10,309
Wholesale & Retail Trade	1,656	11,095
Services	969	5,567
State/Local Government	817	7,253
Contract Construction	371	2,156

Note: Excludes domestic workers, railway workers, certain nonprofit corporations, majority of federal government workers, and self-employed workers.

Source: Kentucky Cabinet for Human Resources, Average Monthly Workers Covered by Kentucky Unemployment Insurance Law, 1985.

PER CAPITA PERSONAL INCOME

<u>Area</u>	<u>1980</u>	<u>1984</u>	<u>Percent Change</u>
Nelson County	\$ 6,997	\$ 9,263	32.4
Labor Market Area Range	\$4,980 - 7,710	\$7,146 - 10,756	N/A
Kentucky	7,644	10,232	33.9
U. S.	9,494	12,772	34.5

Sources: U.S. Department of Commerce, Bureau of Economic Analysis. Kentucky Economic Information System, June 1986.

ESTIMATED MALE LABOR SUPPLY
BARDSTOWN LABOR MARKET AREA

Area	Current			Future	
	Total Male	Unemployed	Under-employed	Not in Labor Force	Becoming 18 years of age 1986 thru 1990
Labor Market					
Area*	11,266	5,283	5,971	12	9,737
Nelson	1,577	962	615	0	1,262
Anderson	557	351	206	0	566
Bullitt	1,971	1,108	863	0	2,625
Hardin	4,446	1,122	3,324	0	3,272
Larue	572	358	214	0	476
Marion	1,282	873	409	0	803
Spencer	274	156	106	12	276
Washington	587	353	234	0	457

ESTIMATED FEMALE LABOR SUPPLY
BARDSTOWN LABOR MARKET AREA

Area	Current			Future	
	Total Female	Unemployed	Under-employed	Not in Labor Force	Becoming 18 years of age 1986 thru 1990
Labor Market					
Area*	12,115	3,746	4,751	3,618	9,389
Nelson	1,688	650	618	420	1,301
Anderson	652	307	345	0	544
Bullitt	2,512	725	1,019	768	2,461
Hardin	4,466	1,159	1,975	1,332	3,113
Larue	757	160	178	419	444
Marion	897	324	259	314	858
Spencer	544	118	109	317	228
Washington	599	303	248	48	440

* Additional workers may be drawn from other nearby counties.

Note: Unemployed - persons unemployed and actively seeking work;
Underemployed - persons employed but working only 14 to 26 weeks per year;
Not in Labor Force - represents the number of persons who would enter the labor force if suitable employment were available (based on the assumption that persons in Kentucky would like to participate in the labor force in the same proportion that they do nationally).

Sources: Kentucky Cabinet for Human Resources, Kentucky Labor Supply Estimates by County, 1985. Kentucky Department of Economic Development, Future Labor Supply Becoming 18 Years of Age, 1986 thru 1990.

AVERAGE WEEKLY WAGES BY INDUSTRY,
BY PLACE OF WORK, 1985

	<u>Nelson County</u>	<u>Anderson County</u>	<u>Bullitt County</u>	<u>Hardin County</u>
All Industries	\$279.78	\$286.88	\$278.97	\$274.82
Mining & Quarrying	371.80	*	*	413.36
Contract Construction	297.83	210.81	230.09	306.24
Manufacturing	387.39	376.69	393.90	378.21
Transportation, Communications & Public Utilities	402.72	418.87	307.92	332.02
Wholesale & Retail Trade	169.70	206.32	174.63	184.66
Finance, Insurance & Real Estate	261.58	290.20	251.77	285.58
Services	167.36	165.81	176.94	238.81
State/Local Government	295.57	253.24	294.39	315.99
Other	179.65	195.08	162.21	262.87
	<u>Larue County</u>	<u>Marion County</u>	<u>Spencer County</u>	<u>Washington County</u>
All Industries	\$217.50	\$230.74	\$214.98	\$227.21
Mining & Quarrying	0	*	0	*
Contract Construction	213.99	229.66	175.66	287.53
Manufacturing	214.25	267.22	160.61	269.04
Transportation, Communications & Public Utilities	434.67	278.45	202.57	176.10
Wholesale & Retail Trade	171.39	171.34	151.72	169.99
Finance, Insurance & Real Estate	273.67	256.27	323.14	283.99
Services	153.76	217.41	197.40	151.24
State/Local Government	267.95	263.20	256.77	242.26
Other	173.65	192.86	*	162.54

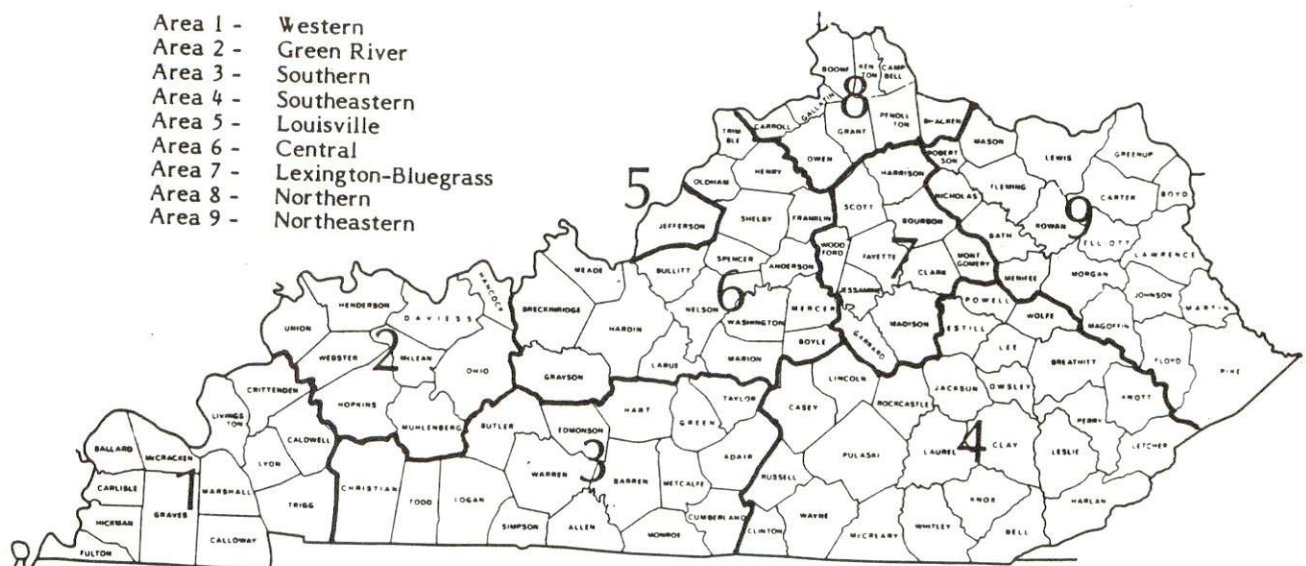
* Not disclosed.

Note: The average weekly wage for each category includes the salaries and wages of all persons working for that type business. For example, the manufacturing category includes both production workers and administrative personnel. Excludes domestic workers, railway workers, certain nonprofit corporations, majority of federal government workers, and self-employed workers.

Source: Kentucky Cabinet for Human Resources, Average Weekly Wages of Workers Covered by Kentucky Unemployment Insurance Law, 1985.

Occupational wage rates for specific industries are usually not available to most government agencies, and wage data furnished to state employment agencies by individual industrial employers are protected from disclosure by federal law. The most reliable up-to-date wage information can be obtained by direct contact with local employers.

Associated Industries of Kentucky, a voluntary organization of Kentucky businesses, regularly collects occupational wage rates and fringe benefits data from participating member firms. Data are compiled for over 127 clearly defined office, production, and service occupations. Tabulations are published for nine geographical areas of Kentucky, as shown on the map below. It should be noted that the data may be weighted by the preponderance of firms in the larger cities and may be somewhat higher than the rates paid in the smaller communities. Data from these tabulations are available, upon request, from the Kentucky Department of Economic Development, Frankfort, Kentucky 40601.



Associated Industries of Kentucky Area Wage Surveys

EXISTING INDUSTRY

NELSON COUNTY MANUFACTURING FIRMS, THEIR PRODUCTS AND EMPLOYMENT

Firm (Establishment date)	Product	Employment			Labor Unions
		Total	Male	Female	
Bardstown					
American Greetings Corporation (1984)	Greeting cards	580	--	--	Teamsters*
Bardstown Asphalt Company, Inc. (1958)	Asphalt	7	6	1	Steelworkers*
Bardstown Mills (1819)	Feed	8	8	0	
Barton Brands, Ltd. (1879)	Whiskey, distillers dried grain	290	210	80	Distillery Workers*
Bird, Inc. (1966)	Vinyl siding	170	135	35	Teamsters*
Boones Abattoir, Inc. (1946)	Meat processing	16	8	8	
Burroughs Corporation (1972)	Business machine ribbons	382	145	237	Teamsters*
Chris's Creations (1981)	Custom furniture, custom cabinets	4	3	1	
Cleveland Welding and Equipment Company (1950)	Steel tanks, miscellaneous steel fabrication	6	5	1	
GBA Printing and Office Supply, Inc. (1981)	Commercial printing, publishing	9	4	5	
Heaven Hill Distilleries, Inc. (1935)	Whiskey, gin, vodka, spirits, distillers dried grains	250	200	50	Distillery Workers*

(Continued)

<u>Firm (Establishment date)</u>	<u>Product</u>	<u>Employment</u>			<u>Labor Unions</u>
		<u>Total</u>	<u>Male</u>	<u>Female</u>	
Lovvorn Construction Company (1983)	Wood wall panels	75	--	--	
Mago Construction Company, Inc. (1958)	Bituminous concrete, surface mixes	40	35	5	
Medusa Aggregates Company	Crushed stone, agricultural lime	18	18	0	
The Needle Crafter, Inc. (1983)	Needle craft	30	2	28	
Owens-Illinois, Inc., Component Parts Division (1968)	Plastic bottle labels, plastic carriers	350	225	125	Paperworkers*
R. A. Parrish Concrete Products (1958)	Concrete block, precast products	15	14	1	
Standard Publishing Company (1900)	Newspaper, letterpress printing, offset printing	34	13	21	
Wenco of Kentucky, Division of Jeld-Wen, Inc. (1985)	Wood interior and patio doors, interior molded doors, aluminum clad patio doors	60	40	20	

(Continued)

<u>Firm</u> (Establishment date)	<u>Product</u>	<u>Employment</u>			<u>Labor Unions</u>
		<u>Total</u>	<u>Male</u>	<u>Female</u>	
Bloomfield					
Glisson's Cabinet Shop, Inc. (1973)	Furniture custom, antique reproduced furniture, wooden accent items	3	2	1	
D. B. Sutherland and Sons, Inc. (1810)	Flour, corn meal, seasoned flour for meat and poultry, feed	24	22	2	
Boston					
James B. Beam Distilling Company (1953)	Whiskey, distillers dried grain	71	65	6	Distillery Workers*
Industrial Timber and Land Company (1982)	Lumber, kiln dried	25	22	3	
David E. Wallace (1950)	Country hams	2	2	0	
Kirby Woosley and Son (1950)	Lumber, crossties	16	15	1	
Clermont (Bullitt County)					
James B. Beam Distilling Company (1795)	Whisky, cordials, cocktails, vodka, distillers dried grains	514	225	289	Distillery Workers*

*See Labor Organizations below.

Sources: Kentucky Department of Economic Development, 1986 Kentucky Directory of Manufacturers; Division of Research and Planning

RECENT INDUSTRIAL DEVELOPMENTS

Woodbridge-Inoac, Inc., and Inoac U.S.A., Inc., have announced plans to build manufacturing plants in Bardstown. Woodbridge-Inoac, Inc., will build a 100,000-square-foot facility to manufacture automotive instrument panels. Inoac U.S.A., Inc., will build a 40,000-square-foot facility adjacent to Woodbridge-Inoac, Inc., designed to manufacture automotive exterior parts. Woodbridge-Inoac, Inc., will initially employ 43 people and increase employment to 119 within two years, while Inoac U.S.A., Inc., will hire 27 people initially, with plans to increase to 91 within two years. Each plant represents an investment of \$7.5 million. Both plants plan to begin operation in early 1988.

American Greetings Corporation has proposed plans for a major expansion in 1987.

Jideco of Bardstown, Inc., has started construction of a new 26,900-square-foot manufacturing facility. Jideco of Bardstown, Inc., which will manufacture wiper motors and cruise-control devices, is expected to be in operation by December 1986. The \$4 million plant will initially employ 30 people and gradually increase employment to 60.

The Needle Crafter, Inc., and Owens-Illinois, Inc., reported expansions in 1986.

In 1985, Barton Brands, Ltd.; Bird, Inc.; Burrough Corporation; GBA/Printing and Office Products; Owens-Illinois; and Wenco, Inc., reported expansions representing an increase in employment of 260 people.

Two manufacturing firms, the Needle Crafter and Wenco of Kentucky located in Bardstown during 1984. Four manufacturing firms, Bird, Inc.; Burroughs Corporation; the Kentucky Standard; and the Needle Crafter reported expansions in 1984.

LABOR ORGANIZATIONS IN MANUFACTURING FIRMS

<u>Union</u>	<u>Representing workers at:</u>
Distillery, Wine and Allied Workers' International Union, AFL-CIO-CLC	Barton Brands, Ltd; Heaven Hill Distilleries; James B. Beam Distilling Company (Boston); James B. Beam Distilling Company (Clermont)
International Brotherhood of Teamsters, Chauffeurs, Warehousemen and Helpers of America	American Greeting Corporation; Bird, Inc.; Burroughs Corporation
United Paperworkers International Union, AFL-CIO	Owens-Illinois, Inc., Lily Division
United Steelworkers of America, AFL-CIO	Bardstown Asphalt Company, Inc.

SELECTED INDUSTRIAL SERVICES

<u>Types of Services</u>	<u>Location</u>	<u>Mileage from Bardstown</u>
Custom Plastics Producers	Springfield	17
	Mt. Washington	20
Electric Motor Repair	Lebanon	25
	Elizabethtown	26
Grinding, Precision & Tool	Louisville	41
Heat Treating Facilities	Louisville	41
Industrial Equipment & Supplies	Springfield	17
Industrial Gases	Elizabethtown	26
	Louisville	41
Industrial Waste Removal	Elizabethtown	26
	Louisville	41
Machine Shops, Tool & Die	Springfield	17
Metal Finishers	Elizabethtown	26
	Louisville	41
Metal Service Centers	Louisville	41
Millwrights	Elizabethtown	26
	Louisville	41
Public Warehouse Facilities	Elizabethtown	26
	Louisville	41

Sources: Kentucky Department of Economic Development, Kentucky Directory of Selected Industrial Services, 1985; Division of Research and Planning.

TRANSPORTATION

Rail

Line serving **Bardstown** - CSX Transportation

Services - Branch line; local freight stops three times a week traveling northbound and southbound; switching services; team track space for 12 cars. Nearest piggyback facilities are located at Louisville, 41 miles north.

For details on routing, schedules, rates, and services contact:

Manager of Industrial Development
CSX Transportation
P.O. Box 2157
Louisville, Kentucky 40201
(502) 587-5228

Highways

Bardstown is served by the Blue Grass Parkway, U.S. 62, U.S. 31-E, U.S. 150, Kentucky 49 and Kentucky 245. Two interchanges with the Blue Grass Parkway are located just southeast and southwest of Bardstown. Interchanges with Interstate 65 are located 17 miles northwest via Kentucky 245, and 23 miles west via Blue Grass Parkway.

All highways which serve Bardstown are "AAA" rated (80,000-pound gross load limit) trucking highways, except U.S. 31-E and Kentucky 42 south of the Blue Grass Parkway.

Construction of a southbound interchange at the intersection of Interstate 65 and Kentucky 245 is under way. The interchange, which will provide southbound access to residents of northern Nelson County, will be completed in December 1986.

Extension of Kentucky 245 from U.S. 62 north of Bardstown, to U.S. 150 southeast of Bardstown near the Blue Grass Parkway, is planned. No date has been set for construction, but the project is on the six-year plan of the Kentucky Transportation Cabinet. Also included in the six-year plan is the widening and reconstruction of U.S. 150 from 1st Street to Kentucky 49.

Truck Service

Company

Home Office

ANR Freight System, Inc.*

P. O. Box 5070
Denver, Colorado 80217

ARA/Smith's*

P. O. Box 1000
Staunton, Virginia 24401

Bestway Express, Inc.**

Nashville, Tennessee 37210

Central Transport, Inc.**

34200 Mound Road
Sterling Heights, Michigan 48077

Manning Motor Express*

Glasgow, Kentucky 42141

Overnite Transportation Company*

P. O. Box 1216
Richmond, Virginia 23209

Owenton Express, Inc.*

Owenton, Kentucky 40359

Preston Trucking Company, Inc.*

151 Easton Boulevard
Preston, Maryland 21655

Spartan Express, Inc.*

P. O. Box 1089
Greer, South Carolina 29651

Thurston Motor Lines, Inc.**

600 Johnston Road
Charlotte, North Carolina 28206

Yellow Freight System, Inc.*

P. O. Box 7270
Overland Park, Kansas 66207

* Interstate and intrastate service.

** Interstate service only.

Source: American Motor Carrier Directory, Spring 1986.

Other Freight Services

Nearest Shipping Center or Home Office

Airborne Express

Louisville, 41 miles north of Bardstown

Emery

Louisville, 41 miles north of Bardstown

Federal Express

Louisville, 41 miles north of Bardstown

KATO Express, Inc.

Elizabethtown, 26 miles west of
Bardstown

Purolator Courier

Louisville, 41 miles north of Bardstown

United Parcel Services

Louisville, 41 miles north of Bardstown

HIGHWAY MILES AND TRUCK TRANSIT TIME IN DAYS FROM
BARDSTOWN, KENTUCKY, TO SELECTED MARKET CENTERS

City	Highway Miles	Delivery Time TL	City	Highway Miles	Delivery Time TL
Atlanta, Ga.	400	1	Los Angeles, Ca.	2,149	5
Baltimore, Md.	599	2	Louisville, Ky.	41	1
Birmingham, Ala.	354	1	Nashville, Tenn.	158	1
Chicago, Ill.	333	2	New Orleans, La.	675	2
Cincinnati, Ohio	136	1	New York, N. Y.	761	-
Cleveland, Ohio	375	2	Pittsburgh, Pa.	401	1
Detroit, Mich.	395	2	St. Louis, Mo.	304	1
Knoxville, Tenn.	239	2			

Note: Mileage computations are via the best interstate or primary highways, not necessarily the most direct route of travel.

Sources: Rand McNally Road Atlas, 1979. Official Kentucky Mileage Map, 1985.
Delivery time - Overnite Transportation Company, P. O. Box 99308, Louisville,
Kentucky 40299.

Air

	<u>Local</u>
	Samuels Field
Location:	2 miles west of Bardstown
Runways:	1 paved
Length:	4,000 feet
Traffic	
Control:	Wind sock, unicom
Lighting:	Sundown to sunrise, rotating beacon, medium intensity runway edge lights, obstruction lights, REIL, VASI
Services:	100LL and jet-A fuel, charter, flight instruction, hangar, tie downs, storage, major A & P repairs, full-length taxi runway
Air Freight	
Service:	Chartered air freight services must be arranged

(Continued)

Nearest Scheduled Commercial Airline Service

Location:	Standiford Field 5 miles southeast of center of Louisville, Kentucky; 36 miles north of Bardstown
Runways:	2 paved
Length:	10,000 feet; 7,250 feet
Traffic	
Control:	Control tower
Lighting:	Runways, obstructions, beacon and approach; touch-down lights and center line on one runway
Services:	Delta, Eastern, Ozark, Piedmont, Britt Airways, Midstate, Republic, TWA, United, USAir, Allegheny Commuter, Comair, Florida Express; fuel - 100 and jet-A; major A & P repairs; major Avionics repairs; APU, charter, oxygen, U. S. Customs; taxi, car rentals, limousine, courtesy car, public transit; Weather Bureau; restaurant, snack bar
Air Freight Service:	Air freight terminal

Air Express Service

Several major companies offer air express services in Kentucky. These companies provide a quick means of shipping small to medium-sized packages expeditiously.

Taxi - One company, 24-hour service

Rental Services - Car, truck and trailer rentals are available locally

Water

Bardstown is located 41 miles south of the Ohio River at Louisville where port facilities are available. The Louisville-Jefferson County Riverport is designated as a Foreign Trade Zone and offers U.S. Customs service for exports and imports.

POWER AND FUEL

Electricity

Company serving **Bardstown** - Bardstown Municipal Electric Department
Source of power - Kentucky Utilities Company
For industrial rates contact:

Bardstown Municipal Electric Department
220 N. Fifth Street
P. O. Box 368
Bardstown, Kentucky 40004
(502) 348-5947

Company serving **a small portion of Nelson County** - Kentucky Utilities Company
Source of power - Kentucky Utilities Company
For industrial rates contact:

Industrial Development Department
Kentucky Utilities Company
One Quality Street
Lexington, Kentucky 40507
(606) 255-1461

Company serving **the majority of Nelson County** - Salt River Rural Electric
Cooperative Corporation
Source of power - East Kentucky Power Cooperative
For industrial rates contact:

Industrial Development Division
East Kentucky Power Cooperative
P.O. Box 707
Winchester, Kentucky 40391
(606) 744-4812

and/or

Salt River RECC
111 West Brashear Avenue
Bardstown, Kentucky 40004
(502) 348-3931

Natural Gas

Company serving **Bardstown** - Louisville Gas and Electric Company
Source of supply - Texas Gas Transmission Corporation
Size of transmission mains - 26-inch (supplier); 8-inch (distributor)
Distribution mains - 2 to 12 inches
Distribution pressure - 150 to 250 psi
Btu content - 1,025 per cubic foot
Specific gravity - .585
For rates and supplies contact:

Manager, Gas Market Services
Louisville Gas and Electric Company
P. O. Box 32010
Louisville, Kentucky 40232
(502) 566-4488

Other Fuels (Nelson County)

Propane

Coleman Gas Service Company
(bulk service)
1106 N. Third Street
Bardstown, Kentucky 40004

Amerigas (bulk service)
Depot Street
New Haven, Kentucky 40051

Humphrey Brothers' Hardware
Main Street
Bloomfield, Kentucky 40008

Fuel oils

Distillate fuel oil -

Newcomb Oil Company
1360 E. John Rowan Street
Bardstown, Kentucky 40004

Culver's Auto Salvage
Culverton Street
New Haven, Kentucky 40051

Regal-Pinkston
Main Street
Bloomfield, Kentucky 40008

Bowling and Cecil Marathon
Distributors
Center Street
New Haven, Kentucky 40051

Residual fuel oil - Arrangements must be made with the refinery.

Low sulphur content coal - Available in Kentucky.

WATER AND SEWERAGE

Public Water Supply

Company serving **Bardstown** - Bardstown Municipal Water Department*
220 North Fifth Street
P. O. Box 368
Bardstown, Kentucky 40004
(502) 348-3064

Source - Sympson Lake

Treatment plant capacity - 4,600,000 gallons per day

Average daily consumption - 2,500,000 gallons

Peak daily consumption - 3,610,000 gallons

Treatment processes - Coagulation, sedimentation, chlorination, rapid mix, flocculation, filtration, fluoridation

Storage capacity - 2,945,000 gallons

Size lines - 6 to 16 inches

Water pressure - 30 to 120 psi

MONTHLY WATER RATES

First	3,000 gallons	\$5.00 (minimum inside city) 7.50 (minimum outside city)
Next	75,000 gallons	1.25 per M gallons
All over	78,000 gallons	0.80 per M gallons

Tap-on charge:

3/4-inch - \$250 inside city; \$275 outside city

All larger - Charge is negotiated based on cost

* The Bardstown Municipal Water Department completed expansion of its water treatment plant in January 1986. The expansion increased the treatment capacity from 3 million gallons per day to 4.6 million gallons per day. There are plans to build a one-million-gallon elevated storage tank at the Industrial Park. The \$750,000 project will be completed in November 1986.

Sewerage

Company serving **Bardstown** - Bardstown Municipal Sewer Department*
Old Gilkey Run Road
Bardstown, Kentucky 40004
(502) 348-6723

Design capacity - 3,000,000 gallons per day

Average daily flow - 1,350,000 gallons

Type of treatment - Primary, secondary and tertiary

Treatment processes - Flow equalization, screening, grit removal, primary sedimentation, lagoon system, secondary sedimentation, chlorination, packed biological reactor for BOD and ammonia reduction

Treated effluent discharged into - Town Creek

Size of sanitary mains - 8 to 16 inches

Size of storm mains - Variable (separate from sanitary mains)

Monthly rates -

		<u>Inside City</u>	<u>Outside City</u>
First	3,000 gallons	\$4.50	\$5.50 Minimum
Over	3,000 gallons	.59	.59 per M gallons

Separate sewer rates are charged to users who discharge wastewater which differs significantly from domestic strength wastewater. These rates are based on flow volume, BOD, suspended solids, ammonia nitrogen and for any other parameter established by the city of Bardstown.

Tap-on charge:

\$150 inside city

\$200 outside city

* The Bardstown Municipal Sewer Department recently installed sewer lines at the Bardstown Industrial Development Corporation Industrial Park.

CLIMATE

Nelson County

Temperature

Normal (30-year record)	54.90 degrees
Average annual 1984	55.30 degrees
Record highest, August 1983 (40-year record)	103.00 degrees
Record lowest, January 1963 (40-year record)	-21.00 degrees
Normal heating degree days (30-year record)	4,814
(Heating degree day totals are the sums of negative departures of average daily temperatures from 65 degrees F.)	

Precipitation

Normal (30-year record)	45.68 inches
Mean annual snowfall (29-year record)	16.30 inches
Total precipitation 1984	42.27 inches
Mean number days precipitation (.01 inch or more)	
(40-year record)	130.80
Mean number days thunderstorms (40-year record)	46.00

Prevailing Winds (through 1963)

South

Relative Humidity

1 a.m.	77 percent (20-year record)
7 a.m.	81 percent (21-year record)
1 p.m.	60 percent (21-year record)
7 p.m.	64 percent (21-year record)

Source: U.S. Department of Commerce, Environmental Science Services Administration, Climatological Data, 1984. Station of record: Lexington, Kentucky.

LOCAL GOVERNMENT

Structure

Bardstown is served by a mayor and six council members. Nelson County is served by a county judge/executive and five magistrates.

Planning and Zoning

Joint agency - Joint City-County Planning Commission of Nelson County

Participating cities - Bardstown, Bloomfield, Fairfield and New Haven

Zoning enforced - All areas

Subdivision regulations enforced - All areas

Local codes enforced - Building and housing (excluding one- and two-family residences)

Mandatory state codes enforced - Kentucky Plumbing Code, National Electric Code, Kentucky Boiler Regulations and Standards, Kentucky Building Code (modeled after BOCA code)

Local Fees and Licenses

Bardstown levies a business license fee that ranges from \$10 to \$500 per year, depending upon the type of business. Bardstown levies a \$125 license fee for manufacturing firms.

State and Local Property Taxes

All property in Kentucky, except items exempted by the state constitution, is taxed by the state. Property which also may be taxed by local jurisdictions includes land and buildings, finished goods inventories, automobiles, trucks, office furniture and office equipment. Local taxing jurisdictions in Kentucky include counties, cities, and school districts.

All property in Kentucky is assessed at 100 percent of fair cash value.

COMBINED STATE AND LOCAL RATES PER \$100 VALUATION, 1985

	<u>Bardstown and Bardstown School District</u>	<u>Nelson County and Bardstown School District</u>	<u>Unincorporated Nelson County</u>
Land and Buildings	\$ 0.9600	\$ 0.7240	\$ 0.6240
Manufacturing Machinery	0.150	0.150	0.150
Pollution Control Equipment	0.150	0.150	0.150
Inventories			
Raw materials	0.001*	0.001*	0.001*
Goods in Process	0.001*	0.001*	0.001*
Finished Goods	0.7635*	0.5235*	0.4205*
Automobiles and Trucks	1.2745	1.0345	0.9235
Other Tangible Personal Property	1.2125	0.9725	0.8695
Intangibles (Accounts receivable, money in hand, stock, notes, bonds)	0.250**	0.250**	0.250**
Goods Stored in Public Warehouses in Transit Status	0.001*	0.001*	0.001*
Private Leaseholds in Industrial Revenue Bond Financed Facilities	0.015	0.015	0.015

* Includes 1986 state rate.

** Accounts receivable are taxed at 85 percent of face value, for an effective rate of \$0.2125 per \$100 valuation.

Safety

Police	Bardstown	Nelson County	
		Police	Sheriff
Total staff	18	5	4
Radio-patrol cars	3	5	4
Fire*	Bardstown	Nelson County	
Insurance Services Office, Public Protection Classification	6	**	
Full-time staff	2	-	
Volunteers	20	-	

Refuse Collection and Disposal

Refuse collection and disposal to residential and commercial customers of Bardstown is provided by the city of Bardstown. Industrial customers must contract through private contractors.

* Includes copyrighted material of ISO Commercial Risk Services, Inc., with its permission.

** Five volunteer fire departments, in addition to Bardstown, provide fire protection in Nelson County: Bloomfield, Class 7; Boston, Class 10; New Haven, Class 6; New Hope, Class 9/9; and Rolling Fork, Class 9/9.

EDUCATION

Public Schools

	Bardstown Independent	Nelson County*
Total Enrollment (May, 1986)	1,430	3,588
Kindergarten	144	333
Elementary	559	1,567
Junior High	-	814
Middle School	293	-
High School	434	874
Accreditation	Southern Association of Colleges and Schools	Southern Association of Colleges and Schools
Pupil-Teacher Ratio (1984-85)	18-1	19-1
Percent High School Graduates to College (1984-85)	52.0	42.0
Expenditures Per Pupil (1984-85)	\$2,093.51	\$1,913.94

Nonpublic Schools

<u>School</u>	<u>Enrollment</u>	<u>Grades</u>
Bethlehem High School	306	9-12
St. Joseph Elementary	409	1-8
Saint Rose Elementary	15	K -8
Saint Rose High School	5	9-12
Saint Ann Elementary	63	1-8
Saint Catherine Elementary	137	1-8
Saint Gregory Elementary	124	K -6
Saint Thomas Elementary	74	1-8
Word of Life High School	5	9-12
Word of Life School	15	K -8

* The Nelson County School System will change from the junior high format to the middle school format beginning in the 1986-87 school year.

Area Colleges and Universities

<u>Name</u>	<u>Location (Miles distant)</u>	<u>Enrollment (Fall, 1985)</u>	<u>Highest Degree Conferred</u>
Saint Catharine College	Springfield (17)	246	Associate
Elizabethtown Community College	Elizabethtown (26)	2,049	Associate
Bellarmino College	Louisville (41)	2,664	Masters
Jefferson Community College	Louisville (41)	6,746	Associate
Spalding University	Louisville (41)	1,138	Masters, Specialist
University of Louisville	Louisville (41)	20,083	Doctorate, M.D., D.M.D., J.D.
Centre College	Danville (44)	804	Baccalaureate
Campbellsville College	Campbellsville (45)	648	Baccalaureate

Vocational Training

The Bluegrass State Skills Corporation, an independent public corporation created and funded by the Kentucky General Assembly, provides programs of skills training to meet the needs of business and industry from entry level to advanced training, and from upgrading present employees to retraining experienced workers.

The Bluegrass State Skills Corporation is the primary source for skills training assistance for a new or existing company. The Corporation works in partnership with other employment and job training resources and programs, as well as Kentucky's economic development activities, to package a program customized to meet the specific needs of a company.

Vocational training is available at both the state vocational-technical schools and the area vocational education centers. The state vocational-technical schools are post-secondary institutions. The area vocational education centers are designed to supplement the curriculum of high school students. Both the state vocational-technical schools and the area vocational education centers offer evening courses to enable working adults to upgrade current job skills.

Arrangements can be made to provide training in the specific production skills required by an industrial plant. Instruction may be conducted either in the vocational school or in the industrial plant, depending upon the desired arrangement and the availability of special equipment.

(Continued)

Nearest State School

Elizabethtown State Vocational-Technical School
Elizabethtown, 26 miles distant

Business & Office	Appliance Repair
Accounting Management	Auto Mechanics
Administrative Clerk	Carpentry
Bookkeeper	Diesel Mechanics
Clerical	Drafting (with CAD/CAM)
Legal Secretary	Electronics
Management Trainee	Industrial Electricity
Medical Secretary	Industrial Maintenance
Secretarial	Machine Shop
Stenographic Secretary	Plumbing
Word Processing	Radio & T.V. Repair
Word Processing Operator	Vocational Career Exploration
Word Processing Specialist	Welding
Consumer & Home Economics	Public Service Occupations
Commercial Foods	Fire Service
Distributive Education	E.M.T. Training
Retail Training	Cardiopulmonary Resuscitation
Industrial Education	Multimedia First Aid
Agricultural Mechanics	Rescue Training
Air Conditioning	

Nearest Area Education Center

Nelson County Area Vocational Education Center
Bardstown

Health & Personal Services Occupations	Carpentry/Cabinet Making
Health Services	Drafting
Industrial Education	Industrial Electronics
Air Conditioning/Heating	Welding
Auto Mechanics	

HEALTH

Local Medical Personnel

Physicians - 19
Dentists - 10

Hospitals

<u>General Hospital</u>	<u>Location</u>	<u>Beds</u>
Flaget Memorial Hospital	Bardstown	52

Medical staff - 20 doctors, 26 registered nurses, and 6 licensed practical nurses

Other Medical Facilities

Care Tenders
Hospice of Nelson County, Inc.
North Central Comprehensive Care Center
Sisters of Charity and Community Health Services

Ambulance Service

Name - Nelson County Emergency Medical Services
Staff - 29 emergency medical technicians

OTHER LOCAL FACILITIES

Communications

Telephone -	South Central Bell
Telegraph -	Western Union Toll-free number, 1-800-325-6000
Newspaper - Tri-weekly and circulation -	The Kentucky Standard* 8,000
Radio -	WBRT-AM, WOKH-FM
Television - Airwave reception from - Cable service - Educational television -	Louisville, Lexington, and Bowling Green, Kentucky Bardstown Cable TV The Kentucky Educational Television (K.E.T.) network is available statewide

Library Services

Public library - Nelson County Public Library, Bardstown**
Size collection - 46,174 volumes
Circulation, 1984-85 - 95,345

Religious Institutions

Denominations -	Ame Zion Baptist Christian Church of Christ Church of God Disciples of Christ	Episcopal Jehovah's Witnesses Methodist Presbyterian Roman Catholic
Nearest Synagogues - Congregations -	Louisville, Kentucky, 41 miles north of Bardstown Adath Israel Brith Sholom (reform) Adath Sebhurum (conservative) Anshei Sfard (orthodox) Keneseth Israel (orthodox) Sholom (reform)	

* The Kentucky Standard is published three times a week, Monday, Wednesday, and Friday. On Wednesday's there is a shopper's plus guide published that has a circulation of 16,000.

** Branch libraries are located in Bloomfield, Boston, and New Haven.

Financial Institutions

<u>Banks</u>	<u>Assets</u>	<u>Deposits</u>	<u>Statement Date</u>
Farmer's Bank and Trust Company	\$ 79,069,989.85	\$ 69,231,996.42	12/31/85
Wilson and Muir Bank and Trust Company	71,816,728.00	63,981,300.00	12/31/85
<u>Savings and Loan Associations</u>	<u>Assets</u>	<u>Savings Accounts</u>	<u>Statment Date</u>
Nelson County Federal Savings and Loan Association, Inc.	\$ 27,541,956.00	\$ 25,504,255.78	12/31/85
First Federal Savings and Loan Association of Elizabethtown*	153,013,159.00	138,936,504.00	12/31/85

Hotels and Motels

Total number - 7**
Total rooms - 302

* Figures represent total assets and savings accounts of locations in Bardstown, Elizabethtown, Radcliff, and Munfordville.
** Kountry Klassic, a new 24-unit motel, opened in June 1986.

Clubs and Organizations

American Association of Retired Persons	Homemakers
American Veterans of World War II, Korea and Vietnam (AMVETS)	Heart Fund
American Legion	Hospice of Nelson County, Inc.
American Legion Auxillary	Hospital Auxillary
Babe Ruth League	Homebuilders Association of Central Kentucky
Bardstown Garden Club	Jyacees
Bardstown Industrial Development Corporation	Jettistic
Bardstown-Nelson County Chamber of Commerce	Junior Music Club
Bardstown-Nelson County Tourism Commission	Key Club
Bardstown Art League	Kiwanis
Bardstown-Nelson County Retired Teachers Association	Knights of Columbus
Beta Sigma Club	Little League
Bethlehem Service Club	Lucky Eight
Boy Scouts	Masons
Brownies	Minor League
Business and Professional Women's Club	NAACP
Cancer Society	Nelson County Council on Aging
Clean Community Service	Nelson County Extension Service
Cub Scouts	Nelson County Historical Society
Daughters of the American Revolution (DAR)	Nelson County Voluntary Action
Distributive Education Club of America (DECA)	Nelson County Medical Association
Eastern Star	Nelson County Medical Auxillary
Ebonese	Optimist
Fish and Game Club	Old Kentucky Home Board of Realtors
4-H	Parent-Teacher Association
Future Farmers of America (FFA)	Peanuts League
Girl Scouts	Red Cross
	Rotary International
	Senior Citizens
	Stephen Foster Music Club
	Track and Field Program
	Veterans of Foreign Wars
	Welcome Wagon
	Woman's Club

RECREATION

Local

Bardstown provides various recreational facilities which include an Olympic-size swimming pool and bathhouse, a gymnasium with meeting rooms and offices, a football field, four soccer fields, and six baseball diamonds. Other facilities are basketball courts, volleyball courts, and six tennis courts. Playgrounds, a picnic area, and an outdoor pavillion are conveniently located to provide for family gatherings. Supervised recreational programs: organized baseball and softball leagues, tennis instruction, Little League soccer, football, volleyball, and basketball; arts and crafts; weight lifting; Red Cross swimming programs; various exercise courses, and special events.

Other facilities available in Bardstown include a country club, movie theaters, a bowling facility, a skating rink, a lighted croquet court, a health spa, miniature golf and a community theater.

My Old Kentucky Home State Park, in Bardstown, portrays an image of the South's gentle and leisurely home life before the Civil War. The restored Georgian Colonial mansion is where composer Stephen Foster visited and where he was inspired to write "My Old Kentucky Home." One of the nation's most successful outdoor dramas, "The Stephen Foster Story", is presented in the park's amphitheatre during the summer months. The park also offers a 40-site campground, a gift shop, a 9-hole golf course and pro shop, a picnic area, and planned recreation.

St. Joseph Cathedral, the first Catholic cathedral west of the Allegheny Mountains, was completed in 1819. The cathedral contains paintings which were personal gifts of Francis I of the Two Sicilies and Pope Leo XII.

Wickland, home of three governors, was completed in 1817. This beautiful three story brick mansion is the most perfect example of Georgian architecture in the United States. The owners occupy the home and provide personal tours of the mansion where the finest antique furniture is displayed.

The Old Talbott Tavern originally served as a stage coach stop. Erected in the latter part of the 18th century, the tavern is said to be the oldest hotel in continuous operation west of the Alleghenies.

Spalding Hall, established in 1819 as the St. Joseph College, served as a hospital for Union soldiers during the Civil War. It now houses a museum and an arts and crafts center.

The Oscar Getz of Whiskey History displays a graphic picture of 170 years of the distilling industry in the United States.

The Old Bardstown Village displays Kentucky crafts, market place, working still, broom and candle making, world's finest miniature soldier exhibit, civil war artifacts, blacksmith shop, Captain Bean's Tavern, spinning and loom shop, Village Hall, Wheelwright Shop, water mill, and covered bridge.

Area (Within 50 miles)

Bernheim Forest Arboretum and Nature Center, located 15 miles northwest of Bardstown, is a privately endowed 10,000-acre forest and wildlife refuge. The area contains over 1,400 labeled varieties of plants, trees and shrubs; ornamental gardens; a museum; nature trails and waterfowl ponds.

Lincoln Homestead State Park, 22 miles southeast of Bardstown near Springfield, is a 153-acre park on land settled by Abraham Lincoln's family. The actual building in which Nancy Hanks, mother of President Lincoln, lived during her courtship with Thomas Lincoln is preserved here as well as a replica of the 1782 cabin where Thomas Lincoln lived as a boy. The park also has a museum, a gift shop, a picnic area, and an 18-hole golf course.

Abraham Lincoln Birthplace National Historic Site, located 28 miles southwest of Bardstown near Hodgenville, features the log cabin which was the birthplace of Abraham Lincoln, enclosed within a granite memorial shrine. The grounds include 116 acres of the original Thomas Lincoln farm and a visitors' center with audiovisual programs and exhibits on the Lincoln family.

Taylorsville Lake, 29 miles northeast of Bardstown near Taylorsville, was developed by the U.S. Army Corps of Engineers. The 3,050-acre lake and 10,700-acre recreation area offer facilities for fishing, boating, swimming, and wildlife recreation.

Louisville, 41 miles north of Bardstown, provides a wide variety of recreational opportunities. The most noted recreational event in Louisville is the Kentucky Derby at Churchill Downs. The "Run for the Roses" is the oldest continuously held horse race in the United States. Other attractions include: Kentucky Center for the Arts, Macauley Theatre, Actors Theatre of Louisville, Louisville Children's Theatre, the Louisville Bach Society, the Louisville Orchestra, the Louisville Ballet, the Kentucky Opera Association, several museums, the Louisville Zoological Gardens, University of Louisville sporting events, rock concerts, and the "Belle of Louisville" sternwheeler.

Perryville Battlefield State Shrine, 42 miles southeast of Bardstown near Perryville, is the site of the largest Civil War battle in Kentucky. A museum, a picnic area, and a playground are located on the grounds.

Constitution Square State Shrine, 44 miles southeast of Bardstown in Danville, is a reproduction of Kentucky's first courthouse square, including the original 1792 post office which was the first in the west.

Green River Lake State Park near Campbellsville, 48 miles south of Bardstown, is made up of 1,300 acres surrounding an 8,200-acre lake. The park is open all year-round and offers 96 campsites, a beach, boat docks, fishing, and a picnic area.

Isaac Shelby State Shrine, 49 miles southeast of Bardstown near Danville, is the burial site of Kentucky's first governor and one of the Commonwealth's foremost statesmen.

COMMUNITY IMPROVEMENTS

Recent

Bardstown was chosen as a "Kentucky Certified City" in 1985 and was the recipient of the "Silver Award" for being recognized three consecutive years. The award is based on achievement in the following categories: economic development, transportation, public affairs, utilities, health, commercial development, housing, education and recreation. The Certified Cities Program is sponsored by the Kentucky Chamber of Commerce.

The Bardstown Municipal Water Department completed expansion of its water treatment plant in January 1986. The expansion increased the treatment capacity from 3 million gallons per day to 4.6 million gallons per day.

The Bardstown Municipal Sewer Department recently installed sewer lines at the Bardstown Industrial Development Corporation Industrial Park.

The Needle Crafter, Inc., and Owens-Illinois, Inc., reported expansions in 1986.

In 1985 Barton Brands, Ltd.; Bird, Inc.; Burrough Corporation; GBA/Printing and Office Products; Owens-Illinois; and Wenco, Inc., reported expansions representing an increase in employment of 260 people.

Two manufacturing firms, the Needle Crafter, and Wenco of Kentucky located in Bardstown during 1984. Four manufacturing firms, Bird, Inc.; Burroughs Corporation; the Kentucky Standard; and the Needle Crafter reported expansions in 1984.

In the May 15, 1986, issue of the Denver Post, Bardstown was chosen as one of the twelve most desirable places to travel to. Also, in the July 12, 1982, issue of U.S. News & World Report, Bardstown was picked as one of the ten most attractive cities in America in which to live.

Kountry Klassic, a new 24-unit motel, opened in June 1986.

The Bardstown Independent School System recently completed renovation of a building to house the Early Childhood Education Center. Also recently completed was the carpeting of the hallway at the elementary school.

The Nelson County School System recently installed computer labs at the high school and middle school. Also, a computer was installed in every elementary classroom.

Under Way

Jideco of Bardstown, Inc., has started construction of a new 26,900-square-foot manufacturing facility. Jideco of Bardstown, Inc., which will manufacture wiper motors and cruise-control devices, is expected to be in operation by December 1986. The \$4 million plant will initially employ 30 people and gradually increase employment to 60.

Construction of a southbound interchange at the intersection of Interstate 65 and Kentucky 245 is under way. The interchange, which will provide southbound access to residents of northern Nelson County, will be completed in December 1986.

Planned

Woodbridge-Inoac, Inc., and Inoac U.S.A., Inc., have announced plans to build manufacturing plants in Bardstown. Woodbridge-Inoac, Inc., will build a 100,000-square-foot facility to manufacture automotive instrument panels. Inoac U.S.A., Inc., will build a 40,000-square-foot facility adjacent to Woodbridge-Inoac, Inc., designed to manufacture automotive exterior parts. Woodbridge-Inoac, Inc., will initially employ 43 people and increase employment to 119 within two years, while Inoac U.S.A., Inc., will hire 27 people initially, with plans to increase to 91 within two years. Each plant represents an investment of \$7.5 million. Both plants plan to begin operation in early 1988.

Extension of Kentucky 245 from U.S. 62 north of Bardstown to U.S. 150 southeast of Bardstown near the Blue Grass Parkway, is planned. No date has been set for construction, but the project is on the six-year plan of the Kentucky Transportation Cabinet. Also included in the six-year plan is the widening and reconstruction of U.S. 150 from 1st Street to Kentucky 49.

American Greetings Corporation has proposed plans for a major expansion in 1987.

The Bardstown Municipal Water Department plans to build a one-million-gallon elevated storage tank at the Industrial Park. The 4750,000 project will be completed in November 1986.

The Bardstown Independent School System has plans to renovate the basement at the junior high school and to make roofing repairs on all buildings within the school system.

There are plans to build a city-county community building. The facility, which will house the health department, agricultural extension office and have seating capacity of 260 for public meetings, will be completed in Spring 1987.

Construction of a new county jail is to start in Summer 1986. The \$700,000 project will be completed in Summer 1987.