

1992

Industrial Resources: Pendleton County - Falmouth and Butler

Kentucky Library Research Collections
Western Kentucky University, spcol@wku.edu

Follow this and additional works at: https://digitalcommons.wku.edu/pendleton_cty

 Part of the [Business Administration, Management, and Operations Commons](#), [Growth and Development Commons](#), and the [Infrastructure Commons](#)

Recommended Citation

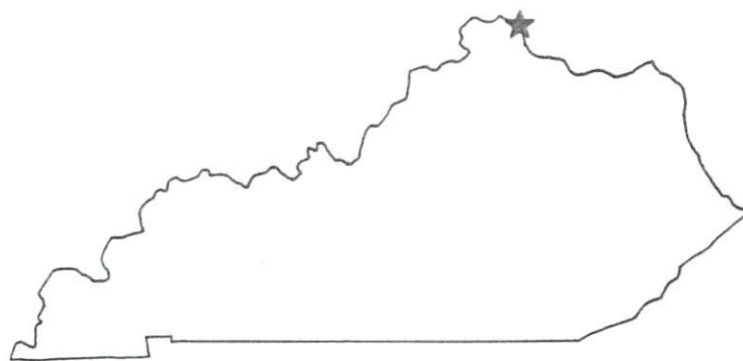
Kentucky Library Research Collections, "Industrial Resources: Pendleton County - Falmouth and Butler" (1992). *Pendleton County*. Paper 3.
https://digitalcommons.wku.edu/pendleton_cty/3

This Report is brought to you for free and open access by TopSCHOLAR®. It has been accepted for inclusion in Pendleton County by an authorized administrator of TopSCHOLAR®. For more information, please contact topscholar@wku.edu.

R
20
Pendleton

Resources for Economic Development

Falmouth & Butler



KENTUCKY

RESOURCES FOR ECONOMIC DEVELOPMENT
FALMOUTH & BUTLER, KENTUCKY

Prepared by
The Kentucky Cabinet for Economic Development
Division of Research and Planning
in cooperation with
City of Falmouth

1992

TABLE OF CONTENTS

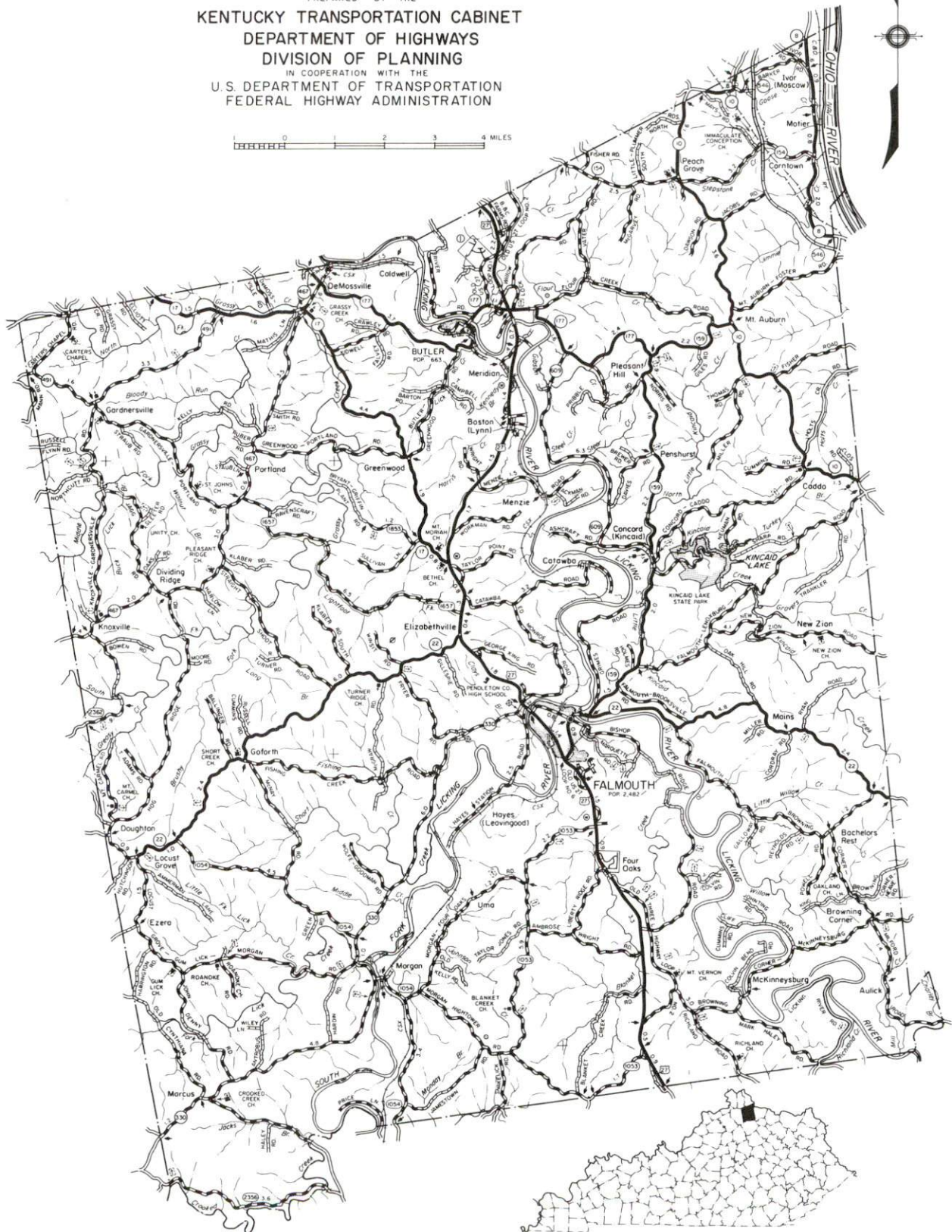
<u>Chapter</u>	<u>Page</u>
FALMOUTH AND BUTLER, KENTUCKY - A RESOURCE PROFILE	1
THE LABOR MARKET STATISTICS	2
Labor Market Area Map	2
Population	3
Population Projections	3
Estimated Labor Supply.....	3
Labor Force Characteristics of Residents, 1991	4
Selected Components of Nonagricultural Employment, by Place of Work, 1990	5
Per Capita Personal Income	6
Average Placement Wages	7
Average Weekly Wages of Workers Covered by Unemployment Insurance 1990 - Bar Chart	8
Average Weekly Wages by Industry, by Place of Work, 1990	9
EXISTING INDUSTRY	10
Pendleton County Manufacturing Firms, Their Products and Employment	10
Recent Industrial Developments	11
Labor Organizations in Manufacturing Firms	11
Selected Industrial Services	12
TRANSPORTATION	13
Highways	13
Truck Service	13
Selected Market Location Map.....	14
Rail	15
Air	15
UTILITIES	16
Electricity	16
Natural Gas	17
Public Water Supply	17
Sewerage	18
CLIMATE	19

<u>Chapter</u>	<u>Page</u>
LOCAL GOVERNMENT.....	20
Structure	20
Planning and Zoning	20
Local Fees and Licenses	20
State and Local Property Taxes.....	21
EDUCATION	22
Public Schools.....	22
Area Colleges and Universities	22
Vocational Training	23
OTHER LOCAL FACILITIES	24
Local Medical Personnel	24
Hospitals	24
Other Medical Facilities and Services.....	24
Banks and Savings & Loan Associations	24
Newspapers	24
Telephone Service	24
RECREATION	25
COMMUNITY IMPROVEMENTS	26

GENERAL HIGHWAY MAP PENDLETON COUNTY KENTUCKY

PREPARED BY THE
KENTUCKY TRANSPORTATION CABINET
DEPARTMENT OF HIGHWAYS
DIVISION OF PLANNING
IN COOPERATION WITH THE
U.S. DEPARTMENT OF TRANSPORTATION
FEDERAL HIGHWAY ADMINISTRATION

0 1 2 3 4 MILES



FALMOUTH AND BUTLER, KENTUCKY - A RESOURCE PROFILE

Falmouth, the county seat of Pendleton County, is located in the Licking River Valley in northern Kentucky. Falmouth is located 37 miles south of Cincinnati, Ohio; 109 miles northeast of Louisville, Kentucky; and 56 miles north of Lexington, Kentucky. Falmouth had a population of 2,378 in 1990.

Butler is located in the Licking River Valley, 10 miles north of Falmouth, and had a population of 625 in 1990.

Pendleton County has a land area of 280 square miles. The northeast portion of the county is bounded by the Ohio River, and the Licking River flows northward through the central area of the county. Pendleton County had a population of 12,036 in 1990.

The Economic Framework - The total number of Pendleton County residents employed in 1991 averaged 3,921. In 1990, manufacturing firms in the county reported 489 employees; wholesale and retail trade provided 430 jobs; 186 people were employed in service occupations; state and local government accounted for 492 employees; and contract construction firms provided 49 jobs.

Labor Supply - There is a current estimated labor supply of 22,022 persons available for industrial jobs in the labor market area. In addition, from 1992 through 1996, 19,981 young persons in the area will become 18 years of age and potentially available for industrial jobs.

Transportation - Highways serving Falmouth and Butler include U.S. Highway 27 and Kentucky Route 22, both "AAA"-rated trucking highways; and Kentucky Route 177, a "AA"-rated trucking highway. Sixteen common carrier trucking companies provide service to Falmouth and/or Butler. CSX Transportation provides main line rail service to Falmouth and Butler. The nearest scheduled commercial airline service is available at the Greater Cincinnati/Northern Kentucky International Airport, 37 miles northwest of Falmouth. The Falmouth-Pendleton County Airport maintains a 4,000-foot paved runway.

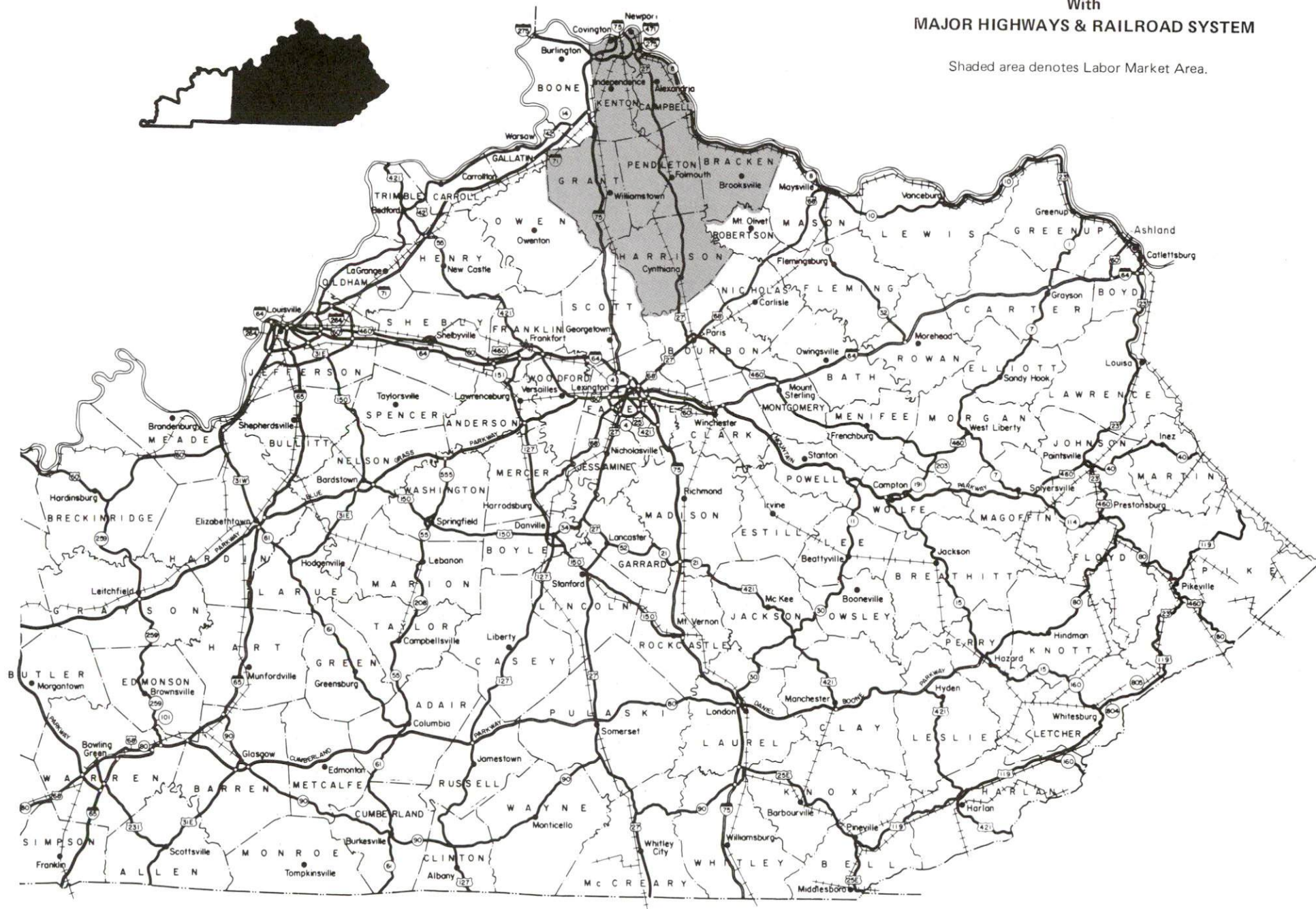
Power and Fuel - The City of Falmouth, whose source of power is Kentucky Utilities Company, provides electricity to Falmouth. Kentucky Utilities Company also provides electricity to Butler and parts of Pendleton County. The remainder of Pendleton County is served by Harrison Rural Electric Cooperative Corporation and Owen Electric Cooperative. The Union Light, Heat and Power Company provides natural gas service to Falmouth and Butler.

Education - Primary and secondary public education is provided by the Pendleton County School System. In addition, ten institutions of higher learning are located within 45 miles of Falmouth. Vocational training facilities are available in Campbell County and Harrison County, both within 25 miles of Falmouth.

FALMOUTH AND BUTLER LABOR MARKET AREA

With MAJOR HIGHWAYS & RAILROAD SYSTEM

Shaded area denotes Labor Market Area.



LABOR MARKET STATISTICS

The Falmouth and Butler Labor Market Area includes Pendleton County and the adjoining Kentucky counties of Bracken, Campbell, Grant, Harrison and Kenton.

POPULATION			
	<u>1990</u>	<u>1980</u>	<u>1970</u>
Labor Market Area	277,684	267,576	259,477
Falmouth	2,378	2,482	2,593
Butler	625	633	558
Pendleton County	12,036	10,989	9,949

Source: U.S. Department of Commerce, Bureau of the Census, January 1991.

POPULATION PROJECTIONS				
	<u>1995</u>	<u>2000</u>	<u>2010</u>	<u>2020</u>
Labor Market Area	283,162	286,592	292,789	297,191
Pendleton County	13,028	14,017	15,801	17,548

Source: University of Louisville, Urban Studies Center, State Data Center.

ESTIMATED LABOR SUPPLY					
	Current				Future
	<u>Total</u>	<u>Unemployed</u>	<u>Employed Part-Time</u>	<u>Not in Labor Force</u>	<u>Becoming 18 years of age 1992 thru 1996</u>
Labor Market Area*	22,022	6,298	11,702	4,022	19,981
Pendleton County	2,464	256	334	1,874	945

* Additional workers may be drawn from other nearby counties.

Note: Unemployed - persons unemployed and actively seeking work; Employed Part-Time - persons employed but working only 14 to 26 weeks per year; Not in Labor Force - represents the number of persons who would enter the labor force if suitable employment were available (based on the assumption that persons in Kentucky would like to participate in the labor force in the same proportion that they do nationally).

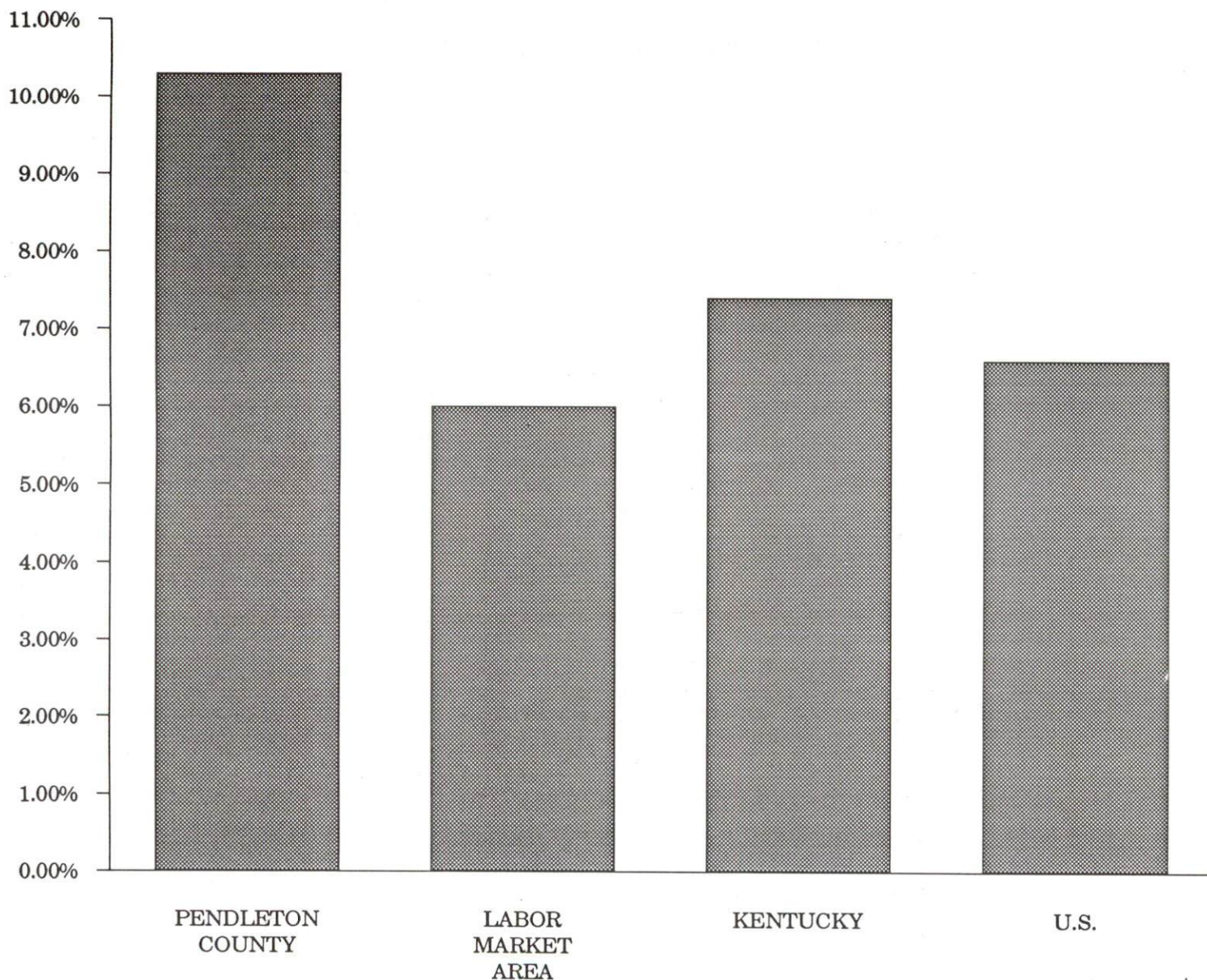
Sources: Kentucky Cabinet for Human Resources, Kentucky Labor Supply Estimates by County, 1989. Kentucky Cabinet for Economic Development, Future Labor Supply Becoming 18 Years of Age, 1992 thru 1996.

LABOR FORCE CHARACTERISTICS OF RESIDENTS, 1991

	<u>Pendleton County</u>	<u>Labor Market Area</u>
Civilian Labor Force	4,370	134,932
Employment	3,921	126,842
Unemployment	449	8,090
Rate of Unemployment (%)	10.3	6.0

Source: Kentucky Cabinet for Human Resources, Kentucky Labor Force Estimates, Annual Averages, 1991.

UNEMPLOYMENT RATES 1991

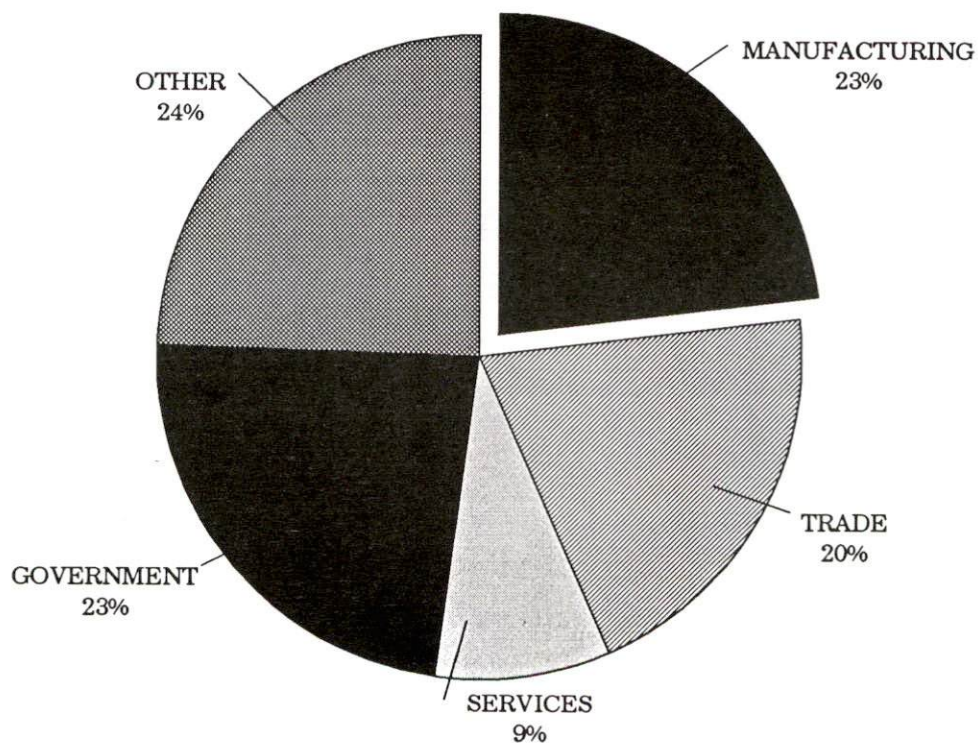


SELECTED COMPONENTS OF NONAGRICULTURAL EMPLOYMENT
BY PLACE OF WORK, 1990

	Pendleton County	Labor Market Area
All Industries (total)	2,106	74,480
Manufacturing	489	10,632
Wholesale & Retail Trade	430	23,656
Services	186	19,056
State/Local Government	492	10,901
Contract Construction	49	4,584

Note: Excludes domestic workers, railway workers, certain nonprofit corporations, majority of federal government workers, and self-employed workers.
Source: Kentucky Cabinet for Human Resources, Average Monthly Workers Covered by Kentucky Unemployment Insurance Law, 1990.

PENDLETON COUNTY

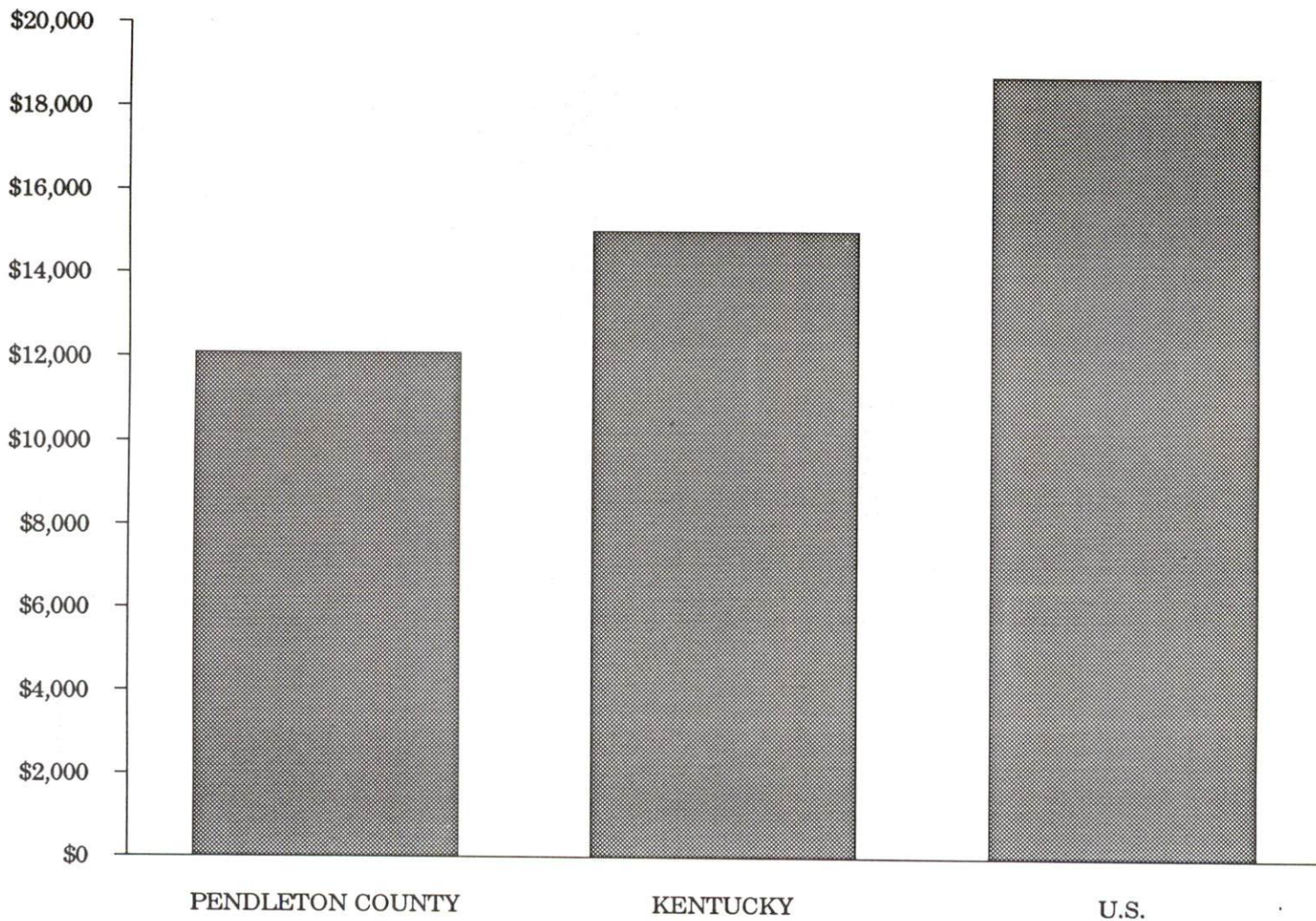


PER CAPITA PERSONAL INCOME

Area	1986	1990	Percent Change
Pendleton County	\$9,948	\$12,089	21.5
Labor Market Area Range	\$8,716 - \$12,781	\$11,226 - \$16,935	-
Kentucky	\$11,273	\$14,992	33.0
U.S.	\$14,654	\$18,696	27.6

Source: U.S. Bureau of Economic Analysis, Kentucky Economic Information System, April 1992.

PER CAPITA PERSONAL INCOME 1990



AVERAGE PLACEMENT WAGES

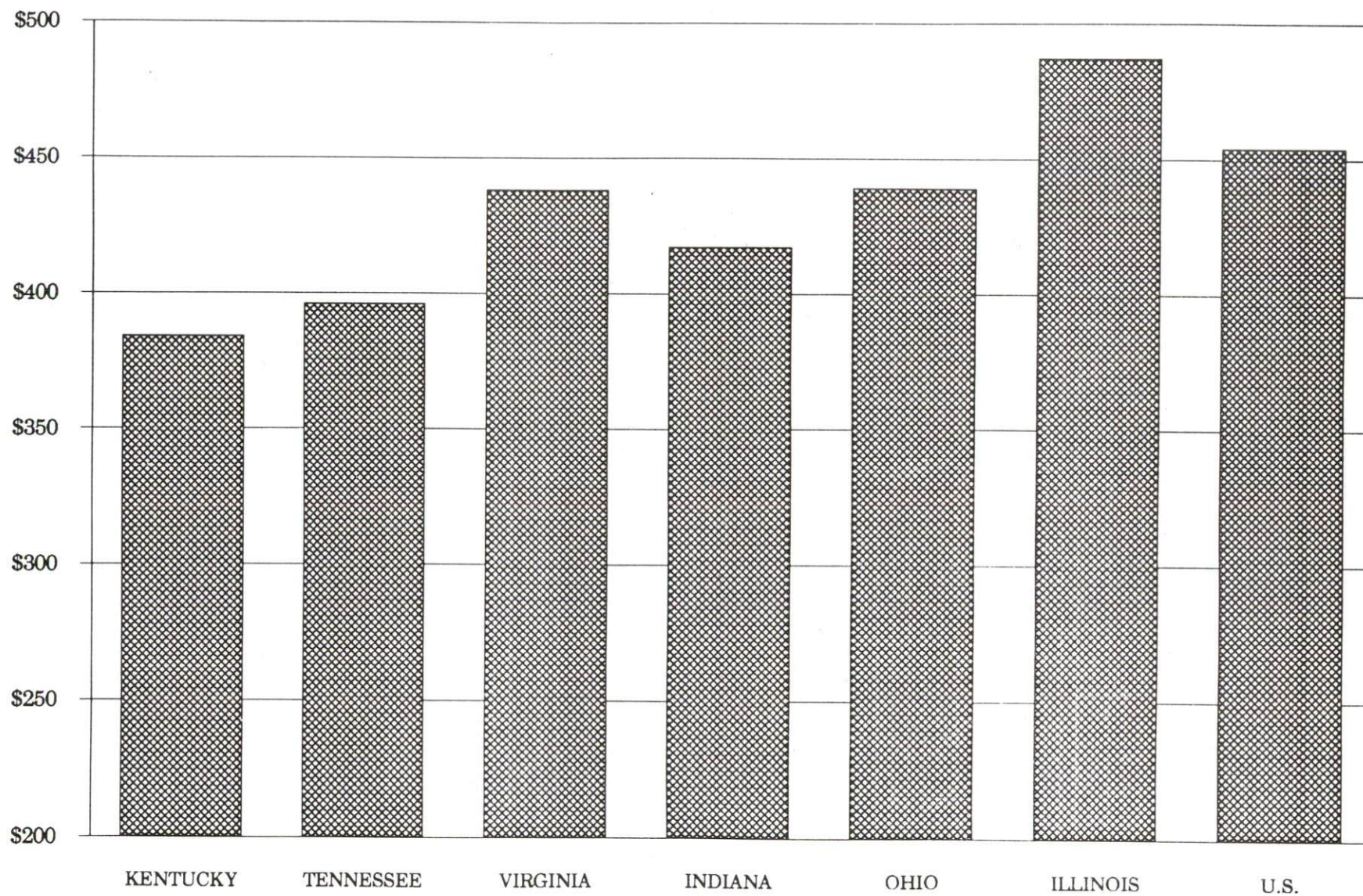
Pendleton County is served by the Covington local office of the Kentucky Department for Employment Services. The focus of the following data is on job placements made by the Covington local office and may therefore be used as an indicator of the wages which employers in the area pay new employees. During the twelve months which ended on June 30, 1990, the local employment office filled 6,640 job openings in various occupational categories. The average hourly wage for selected occupational categories were:

<u>OCCUPATIONAL CATEGORY</u>	<u>NUMBER OF PLACEMENTS</u>	<u>AVERAGE WAGE(\$)</u>
All Occupations	6,640	5.18
Clerical	929	4.73
Sales	228	4.30
Services (excluding domestic)	1,214	4.03
Agricultural, Fishery, Forestry, etc.	66	4.13
Processing	259	7.99
Machine Trades	557	6.85
Bench Work	553	4.94
Structural	456	6.75
Motor Freight/ Transportation	246	5.45
Packaging and Materials Handling	2,037	4.96
Other	12	6.41

The Covington local office also serves Boone, Campbell, Carroll, Gallatin, Grant, Kenton, and Owen Counties. The above occupational categories are taken from the Dictionary of Occupational Titles published by the U.S. Department of Labor.

Source: Kentucky Cabinet for Human Resources, Department for Employment Services.

AVERAGE WEEKLY WAGES OF WORKERS COVERED BY
UNEMPLOYMENT INSURANCE - 1990



AVERAGE WEEKLY WAGES BY INDUSTRY
BY PLACE OF WORK, 1990*

	<u>Pendleton County</u>	<u>Kentucky (State- Wide)</u>	<u>Tennessee</u>	<u>Virginia</u>
All Industries	\$300.73	\$379.97	\$396.00	\$438.00
Mining & Quarrying	N/A	654.24	535.00	635.00
Contract Construction	267.39	401.70	421.00	444.00
Manufacturing	353.70	496.95	449.00	487.00
Transportation, Communications & Public Utilities	315.88	500.70	523.00	575.00
Wholesale & Retail Trade	176.19	255.93	N/A	N/A
Finance, Insurance & Real Estate	249.97	434.93	469.00	508.00
Services	183.23	329.76	378.00	430.00
State/Local Government	289.28	392.28	N/A	N/A
	<u>Indiana</u>	<u>Ohio</u>	<u>Illinois</u>	<u>U. S.</u>
All Industries	\$417.00	\$439.00	\$487.00	\$454.00
Mining & Quarrying	746.00	619.00	747.00	714.00
Contract Construction	475.00	504.00	624.00	503.00
Manufacturing	561.00	595.00	590.00	555.00
Transportation, Communications & Public Utilities	519.00	553.00	610.00	578.00
Wholesale & Retail Trade	N/A	N/A	N/A	N/A
Finance, Insurance & Real Estate	442.00	478.00	619.00	571.00
Services	349.00	382.00	444.00	423.00
State/Local Government	N/A	N/A	N/A	N/A

* Wages for U.S. and surrounding states rounded to nearest dollar.

N/A Not Available.

Note: The average weekly wage for each category includes the salaries and wages of all persons working for that type business. For example, the manufacturing category includes both production workers and administrative personnel. Excludes domestic workers, railway workers, certain nonprofit corporations, majority of federal government workers, and self-employed workers.

Source: Kentucky Cabinet for Human Resources, Average Weekly Wages of Workers Covered by Kentucky Unemployment Insurance Law, 1990. U.S. Department of Labor, Bureau of Labor Statistics, Employment and Wages, Annual Averages, 1990, November 1991.

EXISTING INDUSTRY

PENDLETON COUNTY MANUFACTURING FIRMS, THEIR PRODUCTS AND EMPLOYMENT

<u>Firm</u> <u>(Establishment date)</u>	<u>Product</u>	<u>1991</u> <u>Average Employment</u>
Butler		
Butler Products, Inc. (1957)	Trailer landing gear, stabilizing legs, driveshaft center bearing supports	20
Dravo Lime Company, Black River Division (1967)	Chemical and metallurgical quicklime products, metallurgical limestone	160
Griffin Industries, Inc. (1942)	Hides, meat meal, rendering, tallow, grease	58
Jay Gee, Inc. (1971)	Grease tank fabrication, machine shop, metal fabrication	35
L & W Lumber Company (1979)	Wood boxes, skids, rough lumber	7
Mago Construction Company, Inc. (1969)	Bituminous concrete surface mixes	3
Medusa Aggregates Company (1977)	Agricultural lime, crushed stone	35
Pittsfield of Kentucky Inc., Division of Pittsfield Products Company, Inc. (1981)	Industrial filters	40
Jess Vater Manufacturing Company (1963)	Screw machine products	2
Williams Cabinet Company (1980)	Formica laminated cabinets and counters	7
Falmouth		
Fuller Manufacturing Company (1939)	Remanufactured auto engines and parts	120
Hammer Strength (1989)	Exercise weights	14
Moore's Glass and Metal Fabricating, Inc. (1989)	Machine work, welding, glass	3
Outlook Publications, Inc. (1907)	Newspaper, shopper's pamphlet	10
Paynter's Generator Service, Inc. (1983)	Rebuilt generators, alternators, and starters	18

Sources: Kentucky Cabinet for Economic Development, Division of Research and Planning.

RECENT INDUSTRIAL DEVELOPMENT

The City of Falmouth has acquired 10-acres of land, with the option to purchase 40 additional acres, for an industrial site.

The City of Falmouth is in the early planning stages to establish an economic development authority.

LABOR ORGANIZATIONS IN MANUFACTURING FIRMS

Union

United Steelworkers of
America, AFL-CIO-CLC

International Union of
Operating Engineers, AFL-CIO

Representing workers at:

Butler Products, Inc.;
Dravo Lime Company, Black
River Division

Medusa Aggregates Company

SELECTED INDUSTRIAL SERVICES

<u>Types of Services</u>	<u>Location</u>	<u>Mileage from Falmouth</u>
Custom Data Processing	Alexandria, Kentucky	22
Custom Plastics Producers	Florence, Kentucky	32
Electric Motor Repair	Cincinnati, Ohio	37
	Maysville, Kentucky	39
Grinding, Precision & Tool	Erlanger, Kentucky	36
	Cincinnati, Ohio	37
Heat Treating Facilities	Cincinnati, Ohio	37
Industrial Equipment & Supplies	Florence, Kentucky	32
Industrial Gases	Cincinnati, Ohio	37
Industrial Waste Removal	Butler, Kentucky	10
Machine Shops, Tool & Die	Falmouth, Kentucky	-
Metal Castings	Cynthiana, Kentucky	22
Metal Finishers	Newport, Kentucky	35
	Covington, Kentucky	36
	Cincinnati, Ohio	37
Metal Service Centers	Covington, Kentucky	36
	Cincinnati, Ohio	37
Millwrights	Erlanger, Kentucky	36
Public Warehouse Facilities	Florence, Kentucky	32
	Maysville, Kentucky	39

Sources: Kentucky Cabinet for Economic Development, Division of Research and Planning.

TRANSPORTATION

Highways

Falmouth is served by U.S. Highway 27, a "AAA"-rated (80,000-pound gross load limit) trucking highway, and by Kentucky Route 22, which is "AAA"-rated west of Falmouth and "AA"-rated (62,000-pound gross load limit) east of Falmouth.

Butler is located 10 miles north of Falmouth via U.S. Highway 27 and Kentucky Route 177, a "AA"-rated trucking highway.

Access to Interstate 75 is 19 miles west of Falmouth via Kentucky Route 22 and 14 miles west of Butler via Kentucky Routes 177, 17 and 14, all "AA"-rated highways. Interstate 275 is 30 miles north of Falmouth via Highway 27. Falmouth is 41 miles southeast of Interstate 71; 48 miles north of Interstate 64; 53 miles north of the Mountain Parkway; and 62 miles northeast of the Blue Grass Parkway.

HIGHWAY MILES FROM FALMOUTH, KENTUCKY, TO SELECTED MARKET CENTERS

City	Highway Miles	City	Highway Miles
Atlanta, GA	419	Los Angeles, CA	2,215
Baltimore, MD	536	Louisville, KY	109
Birmingham, AL	450	Nashville, TN	266
Chicago, IL	322	New Orleans, LA	788
Cincinnati, OH	37	New York, NY	696
Cleveland, OH	284	Pittsburgh, PA	324
Detroit, MI	297	St. Louis, MO	388
Knoxville, TN	225		

Note: Mileage computations are via the best interstate or primary highways, not necessarily the most direct route of travel.

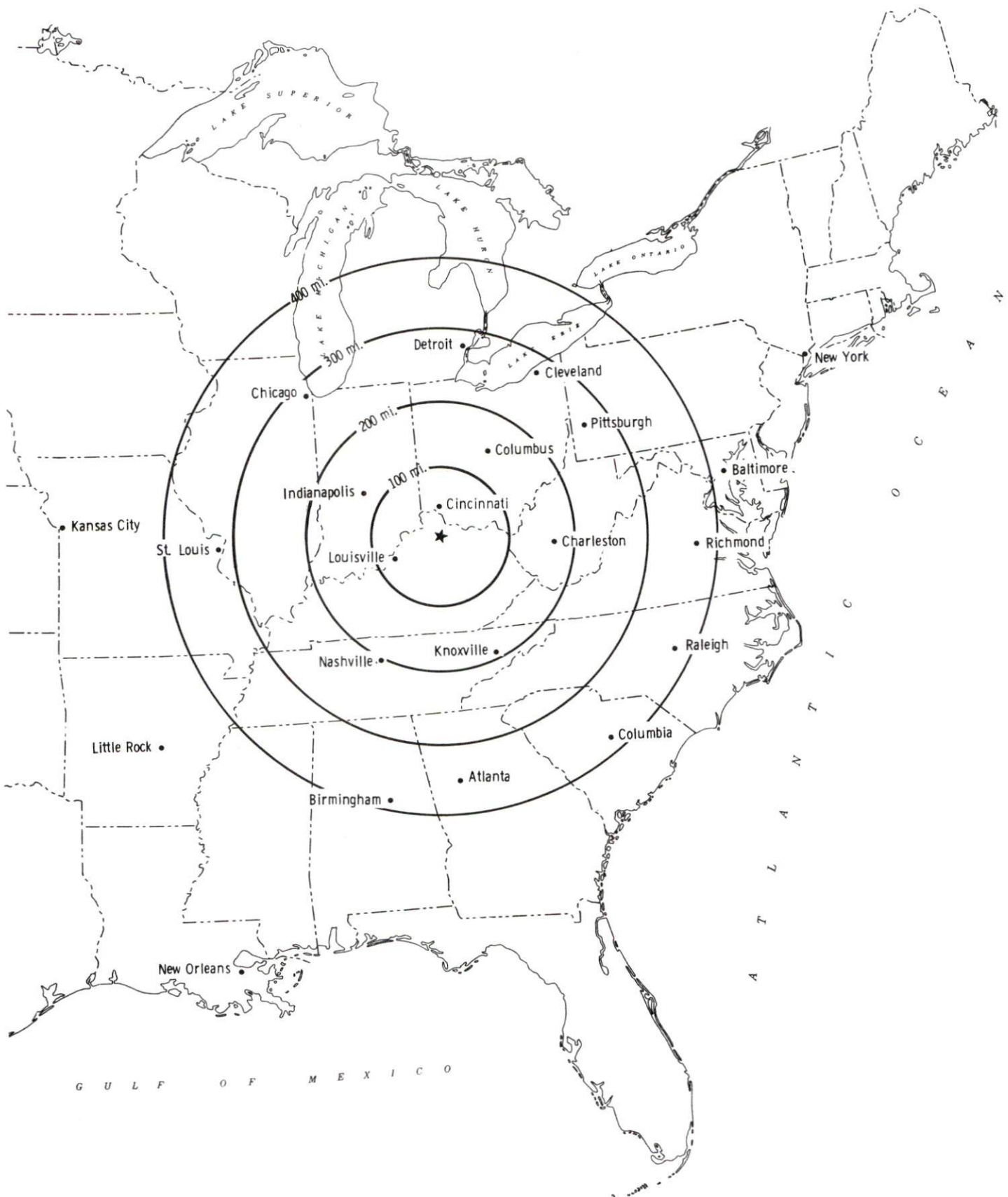
Sources: Rand McNally Standard Highway Mileage Guide, 1990. Official Kentucky Mileage Map, 1985.

Truck Service

There are currently sixteen common carrier trucking companies that provide interstate and/or intrastate service to Falmouth and/or Butler.

Source: American Motor Carrier Directory, Fall 1992.

Selected Market Centers



Rail

CSX Transportation provides main line rail service to Falmouth and Butler. The nearest piggyback facilities are available at Cincinnati, Ohio, 37 miles north of Falmouth, by CSX Transportation and Norfolk Southern Railway System.

For details on routing, schedules, rates, and services contact:

Manager
Industrial Development
CSX Transportation
9420 Bunsen Parkway
Suite 212
Louisville, Kentucky 40220
(502) 499-3025

Air

Local

Location:	Falmouth-Pendleton County Airport (Gene Snyder)
Runways:	4 miles northwest of Falmouth
Length:	1 paved
Traffic	4,000 feet
Control:	Unicom
Lighting:	Beacon dusk to dawn
Services:	80 to 100 LL fuel, major A & P repairs, hangar and tie downs

Nearest Scheduled Commercial Airline Service

	Greater Cincinnati-Northern Kentucky International Airport
Location:	8 miles southwest of Covington, Kentucky; 37 miles northwest of Falmouth
Air Service:	American, Delta, Mesaba, ComAir, TWA, American Eagle, United, USAir, Northwest Air Link, USAir Express, Continental, Northwest, United Express
Daily Arrivals & Departures:	774

UTILITIES

Electricity

Company serving **Falmouth** - City of Falmouth
Source of power - Kentucky Utilities Company
For industrial rates contact:

City of Falmouth
212 Main Street
Falmouth, Kentucky 41040
(606) 654-8780

Company serving **Butler and parts of Pendleton County** - Kentucky
Utilities Company
Source of power - Kentucky Utilities Company
For industrial rates contact:

Industrial Development Department
Kentucky Utilities Company
One Quality Street
Lexington, Kentucky 40507
(606) 255-2100

Company serving **the remainder of Pendleton County** - Harrison Rural
Electric Cooperative Corporation and Owen Rural Electric
Cooperative
Source of power - East Kentucky Power Cooperative
For industrial rates contact:

Industrial Development Department
East Kentucky Power Cooperative
P.O. Box 707
Winchester, Kentucky 40392-0707
(606) 744-4812

and/or

Harrison Rural Electric Cooperative
Corporation
P.O. Box 130
Cynthiana, Kentucky 41031
(606) 234-3131 Fax #(606) 234-4710

and/or

Owen Electric Cooperative
510 South Main Street
Owenton, Kentucky 40359
(502) 484-3471 Fax #(502) 484-2661

Natural Gas

Company serving Falmouth and Butler - Union Light, Heat and Power Company

Source of supply - Columbia Gas Transmission Corporation

For rates and supplies contact:

The Union Light, Heat and Power Company

A subsidiary of The Cincinnati Gas & Electric Company

Director of Regional Development

P.O. Box 960

Cincinnati, Ohio 45201-0960

(513) 287-2595

Public Water Supply

Company serving Falmouth -

City of Falmouth

212 Main Street

Falmouth, Kentucky 41040

(606) 654-6937 Fax #(606) 654-4466

Source -

Licking River

Treatment plant capacity -

1,584,000 gallons per day

Average daily consumption -

750,000 gallons

Peak daily consumption -

1,000,000 gallons

Storage capacity -

850,000 gallons

Water pressure -

85 psi to 95 psi

The City of Falmouth is in the planning stages to renovate the water treatment plant and expand the capacity to two million gallons per day. Total cost of the project is \$1,240,000 and is scheduled for completion by late 1993.

Company serving Butler -

City of Butler Water and Sewer

P.O. Box 229

Butler, Kentucky

(606) 472-5031

Source - Licking River

Treatment plant capacity -

200,000 gallons per day

Average daily consumption -

70,000 gallons

Peak daily consumption -

120,000 gallons

Storage capacity -

200,000 gallons

Water pressure -

30 psi to 160 psi

Company serving Western and Northern Pendleton County -

Pendleton County Water District
400 Main Street
Falmouth, Kentucky 41040
(606) 654-6965

Source of supply of treated water - City of Falmouth
Maximum amount available - 5,000,000 per month
Source of supply of treated water - Campbell County Water
Maximum amount available - no set limit
Average daily consumption - 205,000 gallons
Peak daily consumption - 270,000 gallons
Storage capacity - 376,000 gallons
Water pressure - 35 psi to 210 psi

Company serving East Pendleton County -

East Pendleton Water District
Route 1, Highway 10
Foster, Kentucky 41043
(606) 472-2462

Source of supply of treated water - City of Falmouth
Maximum amount available - no set limit
Average daily consumption - 135,000 gallons
Peak daily consumption - 167,000 gallons
Storage capacity - 350,000 gallons
Water pressure - 40 psi to 140 psi

Sewerage

Company serving Falmouth -

City of Falmouth
212 Main Street
Falmouth, Kentucky 41040
(606) 654-6937 Fax #(606) 654-4460

Design capacity - 390,000 gallons per day
Average daily flow - 250,000 gallons
Type of treatment - Primary
Treated effluent discharged into - Licking River

The City of Falmouth plans to renovate the main sewage pumps at a cost of \$98,000.

Company serving Butler -

City of Butler Water and Sewer
P.O. Box 229
Butler, Kentucky 41006
(606) 472-5031

Design capacity - 60,000 gallons per day
Average daily flow - 35,000 gallons
Type of treatment - Secondary
Treated effluent discharged into - Licking River

The City of Butler is in the planning stages to expand the sewage treatment plant to 80,000 gallons per day, costing approximately \$374,000.

CLIMATE

Pendleton County

Temperature

Normal (29-year record)	53.40 degrees
Average annual 1990	56.20 degrees
Record highest, July 1988 (29-year record)	103.00 degrees
Record lowest, January 1977 (29-year record)	-25.00 degrees
Normal heating degree days (29-year record)	5,247
(Heating degree day totals are the sums of negative departures of average daily temperatures from 65 degrees F.)	

Precipitation

Normal (29-year record)	40.14 inches
Mean annual snowfall (30-year record)	23.40 inches
Total precipitation 1990	57.58 inches
Mean number days precipitation (.01 inch or more) (43-year record)	128.90
Mean number days thunderstorms (43-year record)	42.40

Prevailing winds (through 1963)

South-Southwest

Relative Humidity (28-year record)

1 a.m.	77 percent
7 a.m.	81 percent
1 p.m.	59 percent
7 p.m.	63 percent

Source: U.S. Department of Commerce, Environmental Science Services Administration, Climatological Data, 1990. Station of record: Cincinnati, Ohio, Greater Cincinnati Airport.

LOCAL GOVERNMENT

Structure

The cities of Falmouth and Butler are both served by a mayor and six council members. The mayor serves a four-year term and the council members each serve a two-year term. Pendleton County is served by a county judge/executive for a four-year term and eight magistrates each serving four-year terms.

Planning and Zoning

Presently there are no active planning and zoning commissions operating in Falmouth, Butler or Pendleton County.

Mandatory state codes enforced - Kentucky Plumbing Code, National Electric Code, Kentucky Boiler Regulations and Standards, Kentucky Building Code (modeled after BOCA code)

Local Fees and Licenses

The City of Falmouth requires businesses to pay an occupational and business license fee ranging from \$10 to \$150 per year.

The City of Butler requires businesses to pay an occupational and business license fee ranging from \$5 to \$100 per year. An annual \$6 vehicle sticker is also required.

PROPERTY TAXES

The Kentucky Constitution requires the state to tax all classes of taxable property, and state statutes allow local jurisdictions to tax only a few classes. All locally taxed property is subject to county taxes and school district taxes (either a county school district or an independent school district). Property located inside of city limits may also be subject to city property taxes.

Special local taxing jurisdictions (fire protection districts, watershed districts, and sanitation districts) levy taxes within their operating areas (usually a small portion of community or county).

Property assessments in Kentucky are at 100% fair cash value. A 15% reduction is automatically granted for accounts receivable.

STATE PROPERTY TAX RATES PER \$100 VALUATION

<u>Selected Classes of Property</u>	<u>1991 State Rate</u>	<u>Local Taxation Permitted</u>
Real Estate	\$0.187	YES
Manufacturing Machinery	0.150	NO
Pollution Control Equipment	0.150	NO
Inventories		
Raw Materials	0.050	NO
Goods in Process	0.050	NO
Finished Goods	0.050	YES
Motor Vehicles	0.450	YES
Other Tangible Personal Property	0.450	YES
Intangibles (Accounts Receivable, Money on Hand)	0.250	NO

LOCAL PROPERTY TAX RATES PER \$100 VALUATION, 1991

<u>Taxing Jurisdiction</u>	<u>Real Estate</u>	<u>Finished Goods & Tangibles</u>	<u>Motor Vehicles</u>
Pendleton County	\$0.2630	\$0.1860	\$0.2660
School Districts:			
Pendleton County	0.3690	0.3730	0.5390
Cities:			
Butler	0.1270	0.1270	0.1740
Falmouth	0.1549	0.1549	0.1870

EDUCATION

Public Schools

Pendleton County

Total Enrollment (Fall, 1991)	2,488
Pupil-Teacher Ratio (1990-91)	18.9-1
Percent High School Graduates to College (1990-91)	38.0
Expenditures Per Pupil (1990-91)	\$3,047.78

The Pendleton County School System has completed phase three of renovation to the two elementary schools. Phase three included additional classrooms, computer labs, and gymnasium.

The Pendleton County School System is in the planning stages to construct a new middle school.

Area Colleges and Universities

<u>Name</u>	<u>Location (Mileage from Falmouth)</u>	<u>Enrollment (Fall, 1991)</u>
Athenaeum of Ohio	Cincinnati, Ohio (37)	272
Cincinnati Bible Seminary	Cincinnati, Ohio (37)	897
Hebrew Union College	Cincinnati, Ohio (37)	116
College of Mt. St. Joseph	Cincinnati, Ohio (37)	2,563
Southern Ohio College	Cincinnati, Ohio (37)	513
University of Cincinnati	Cincinnati, Ohio (37)	36,944
Xavier University	Cincinnati, Ohio (37)	6,383
Maysville Community College	Maysville, Kentucky (39)	1,231
Thomas More College	Ft. Mitchell, Kentucky (42)	1,297
Georgetown College	Georgetown, Kentucky (43)	1,547

Vocational Training

Vocational training is available at both the state vocational-technical schools and the area vocational education centers. The state vocational-technical schools are post-secondary institutions. The area vocational education centers are designed to supplement the curriculum of high school students. Both the state vocational-technical schools and the area vocational education centers offer evening courses to enable working adults to upgrade current job skills.

Arrangements can be made to provide training in the specific production skills required by an industrial plant. Instruction may be conducted either in the vocational school or in the industrial plant, depending upon the desired arrangement and the availability of special equipment.

Bluegrass State Skills Corporation

The Bluegrass State Skills Corporation, an independent public corporation created and funded by the Kentucky General Assembly, provides programs of skills training to meet the needs of business and industry from entry level to advanced training, and from upgrading present employees to retraining experienced workers.

The Bluegrass State Skills Corporation is the primary source for skills training assistance for a new or existing company. The Corporation works in partnership with other employment and job training resources and programs, as well as Kentucky's economic development activities, to package a program customized to meet the specific needs of a company.

<u>Vocational School</u>	<u>Location (Mileage from Falmouth)</u>	<u>Cumulative Enrollment 1990-1991</u>
Northern Kentucky State Vocational-Technical School	Covington, Kentucky (36)	861
Northern Campbell County Vocational-Technical School	Highland Heights, Kentucky (29)	251
Northern Kentucky Health Occupations Center	Edgewood, Kentucky (36)	197
Campbell County Area Vocational Education Center	Alexandria, Kentucky (22)	221
Harrison County Area Vocational Education Center	Cynthiana, Kentucky (25)	439

OTHER LOCAL FACILITIES

Local Medical Personnel

Physicians - 5
Dentists - 2

Hospitals

<u>General Hospitals</u>	<u>Location (Mileage from Falmouth)</u>	<u>Beds</u>
Harrison Memorial Hospital	Cynthiana (25)	99
St. Luke Hospital East	Ft. Thomas (34)	310

Harrison Memorial Hospital

Medical staff - 12 physicians, 47 registered nurses, 17 licensed practical nurses

St. Luke Hospital East

Medical staff - 183 physicians, 325 registered nurses, 51 licensed practical nurses

Other Medical Facilities and Services

Comprehensive Care Center of Northern Kentucky
Butler Rest Home
Falmouth Rest Home
Grants Lake I.C. Home
Sharp's Personal Care Home
Three Rivers District Health Department
Pendleton County Health Center
Pendleton County Ambulance Service

Banks and Savings and Loan Associations

The First National Bank
Kentucky National Bank
The Farmers Bank

Newspapers

The Falmouth Outlook (weekly)

Telephone Service

The Cincinnati Bell Telephone Company

RECREATION

Local

Kincaid Lake State Park, near Falmouth, offers many opportunities for the outdoors lover. The park offers a 175-acre lake, a sand beach, a 209-site campground, a gift shop/grocery store, a bathhouse, swimming, olympic size pool, boating, hiking, picnicking, an amphitheatre, shuffleboard, miniature golf, tennis, and organized recreational programs in the summer months.

The Pendleton County Country Club, a private facility located in the northern part of the county, offers an 18-hole golf course, pro shop, a clubhouse, a swimming pool, and two tennis courts.

Falmouth has one park with a playground and a tennis court. The city also has three lighted softball fields available for public use.

Annual events in the Falmouth area include the 4-H Youth Fair, with shows and contests; and the Kentucky Wool Festival, featuring demonstrations, musical entertainment, and arts and crafts. Thaxton's South Fork Canoe Trails hosts a sanctioned canoe race in Pendleton County. The Kincaid Theatre attracts professional theatrical performances to Falmouth.

An annual flea market and homecoming is a popular event in Butler.

Area (Within 65 miles)

Big Bone Lick State Park
The Kentucky Horse Park
Blue Licks Battlefield State Park
Waveland State Historic Site
Fort Boonesborough State Park
Keeneland Race Course
Major Metropolitan Areas:
Northern Kentucky
Cincinnati, Ohio
Lexington, Kentucky

COMMUNITY IMPROVEMENTS

The City of Falmouth has acquired 10-acres of land, with the option to purchase 40 additional acres, for an industrial site.

The City of Falmouth is in the early planning stages to establish an economic development authority.

The Pendleton County School System has completed phase three of renovation to the the two elementary schools. Phase three included additional classrooms, computer labs, and gymnasium.

The Pendleton County School System is in the planning stages to construct a new middle school.

The City of Falmouth is in the planning stages to renovate the water treatment plant and expand the capacity to 2 million gallons per day. Total cost of the project is \$1,240,000 and is scheduled for completion by late 1993.

The City of Butler is in the planning stages to expand the sewage treatment plant to 80,000 gallons per day, costing approximately \$374,000.

The City of Falmouth plans to renovate the main sewage pumps at a cost of \$98,000.