

1986

Industrial Resources: Rowan County - Morehead

Kentucky Library Research Collections
Western Kentucky University, spcol@wku.edu

Follow this and additional works at: https://digitalcommons.wku.edu/rowan_cty

 Part of the [Business Administration, Management, and Operations Commons](#), [Growth and Development Commons](#), and the [Infrastructure Commons](#)

Recommended Citation

Kentucky Library Research Collections, "Industrial Resources: Rowan County - Morehead" (1986). *Rowan County*. Paper 5.
https://digitalcommons.wku.edu/rowan_cty/5

This Report is brought to you for free and open access by TopSCHOLAR®. It has been accepted for inclusion in Rowan County by an authorized administrator of TopSCHOLAR®. For more information, please contact topscholar@wku.edu.

RESOURCES FOR ECONOMIC DEVELOPMENT

Morehead

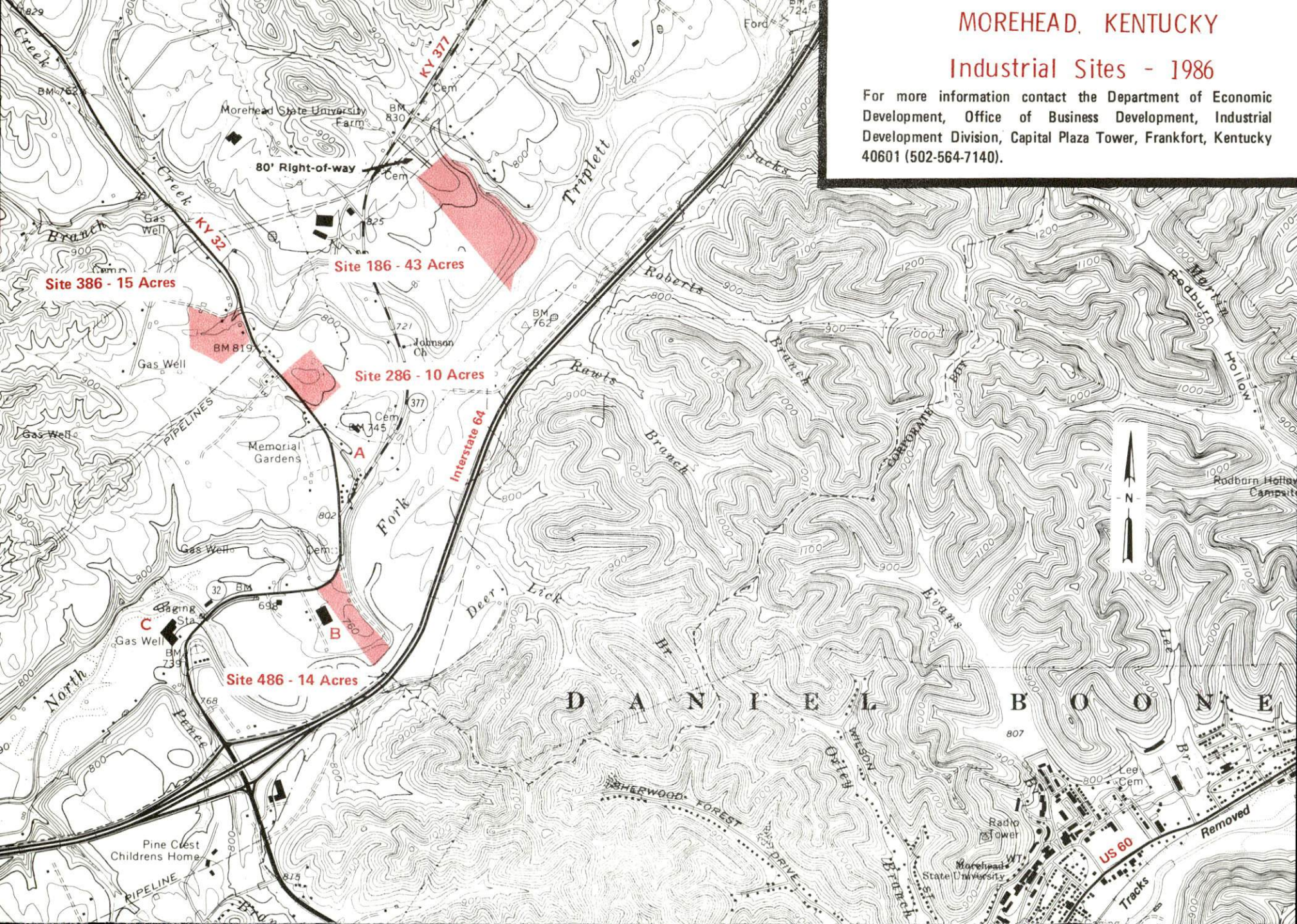


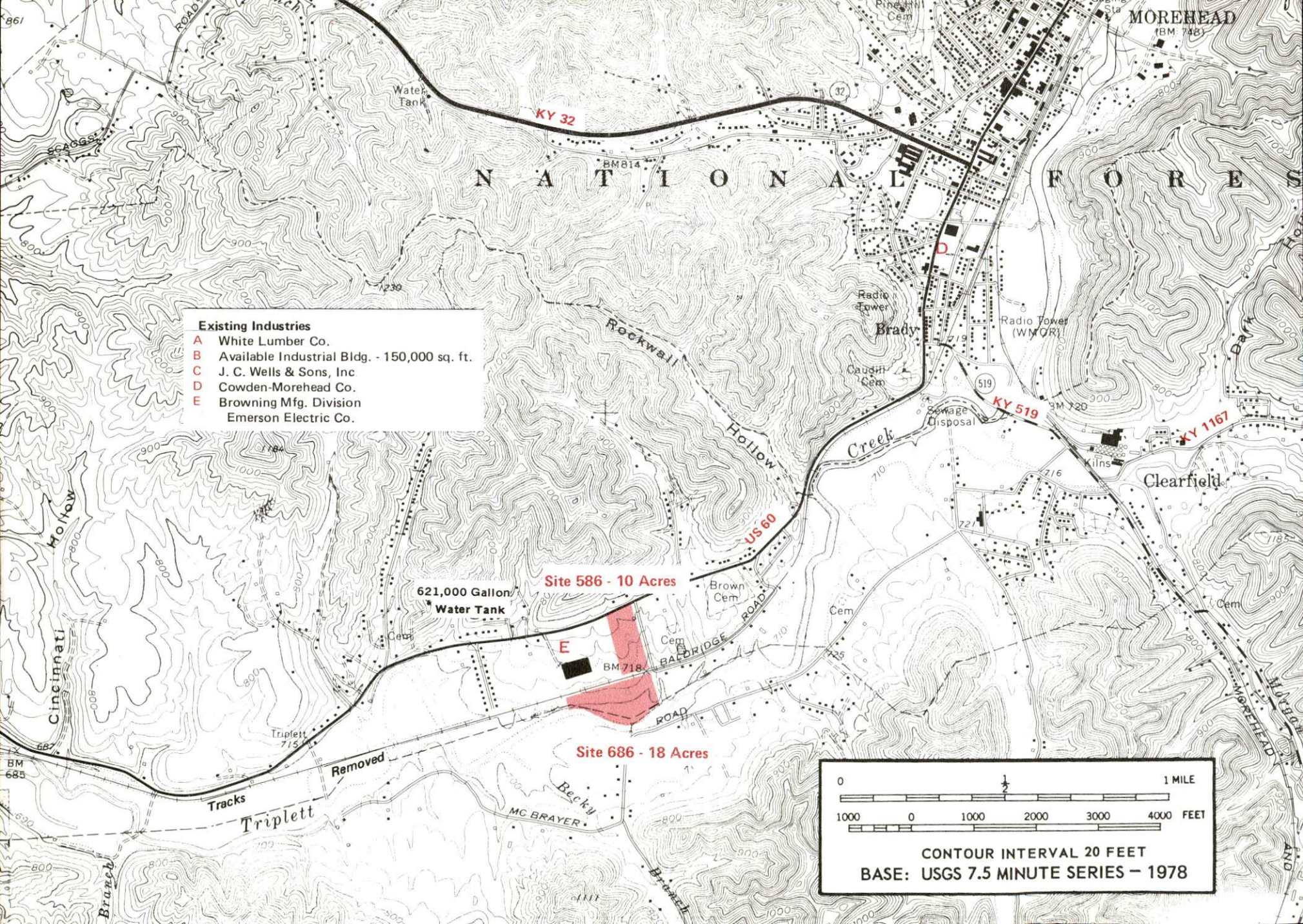
KENTUCKY
The business environment is right.

MOREHEAD, KENTUCKY

Industrial Sites - 1986

For more information contact the Department of Economic Development, Office of Business Development, Industrial Development Division, Capital Plaza Tower, Frankfort, Kentucky 40601 (502-564-7140).





MOREHEAD
BM 748

NATIONAL LUMBER FOREST

- Existing Industries**
- A White Lumber Co.
 - B Available Industrial Bldg. - 150,000 sq. ft.
 - C J. C. Wells & Sons, Inc
 - D Cowden-Morehead Co.
 - E Browning Mfg. Division
Emerson Electric Co.

KY 32

32

Radio Tower
Brady

Radio Tower
(WMOR)

KY 519

BM 720

KY 1167

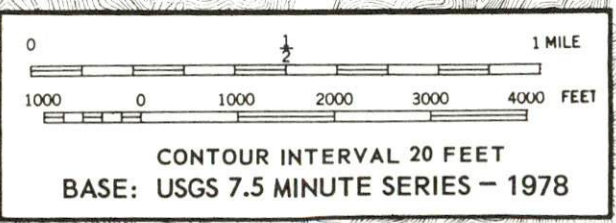
Clearfield

Site 586 - 10 Acres

621,000 Gallon
Water Tank

E

Site 686 - 18 Acres



RESOURCES FOR ECONOMIC DEVELOPMENT

MOREHEAD, KENTUCKY

Prepared by
The Kentucky Department of Economic Development
Division of Research and Planning
in cooperation with
The Morehead-Rowan County Chamber of Commerce
and
The City of Morehead

1986

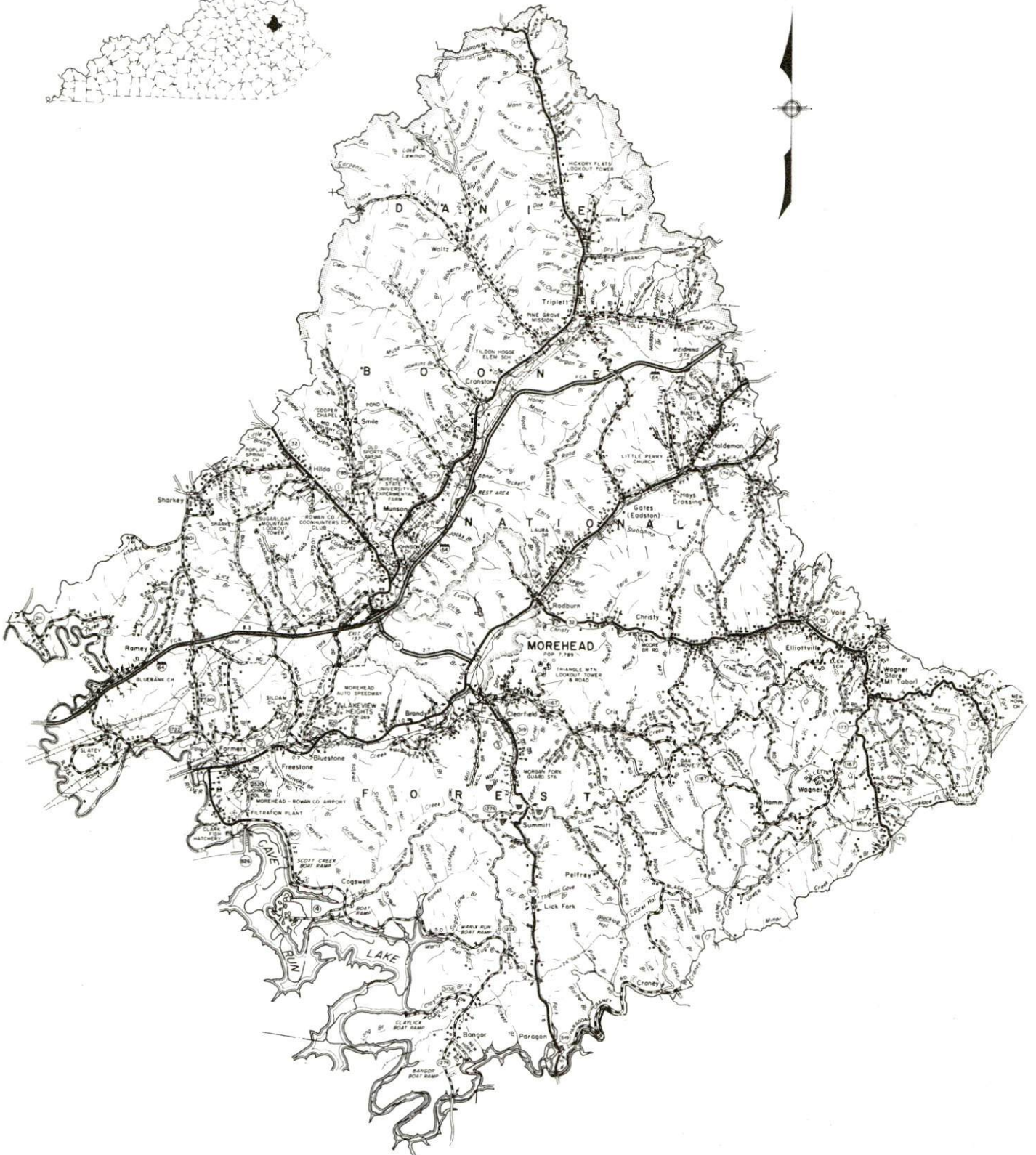
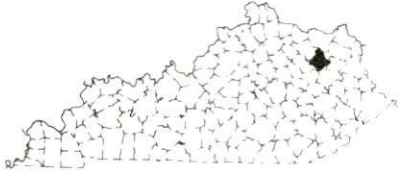
TABLE OF CONTENTS

<u>Chapter</u>	<u>Page</u>
INDUSTRIAL SITES	i
MOREHEAD, KENTUCKY - A RESOURCE PROFILE	1
LABOR MARKET STATISTICS	2
Population	2
Population Projections	2
Labor Force Characteristics of Residents, 1984	3
Selected Components of Nonagricultural Employment, by Place of Work, 1984	3
Per Capita Personal Income	3
Estimated Male Labor Supply	4
Estimated Female Labor Supply	4
Average Weekly Wages By Industry, by Place of Work, 1984	5
EXISTING INDUSTRY	7
Morehead Manufacturing Firms, Their Products and Employment	7
Labor Organizations in Manufacturing Firms	9
Industrial Services	10
TRANSPORTATION	11
Rail	11
Highways	11
Truck Service	11
Air	12
Air Express Service	13
Water	13
POWER AND FUEL	14
Electricity	14
Natural Gas	15
Other Fuels	15
WATER AND SEWERAGE	16
Public Water Supply	16
Sewerage	18

<u>Chapter</u>	<u>Page</u>
CLIMATE	19
LOCAL GOVERNMENT	20
Structure	20
Planning and Zoning	20
Local Fees and Licenses	20
State and Local Property Taxes	21
Safety	22
Police	22
Fire	22
Rescue Service	22
Refuse Collection and Disposal	22
EDUCATION	23
Public Schools	23
Area Colleges and Universities	24
Vocational Schools	25
HEALTH.....	26
Local Medical Personnel	26
Hospitals	26
Other Medical Facilities	26
Ambulance Service	26
OTHER LOCAL FACILITIES.....	27
Communications	27
Library Services	27
Religious Institutions	27
Financial Institutions	28
Hotels and Motels	28
RECREATION	29
COMMUNITY IMPROVEMENTS	32

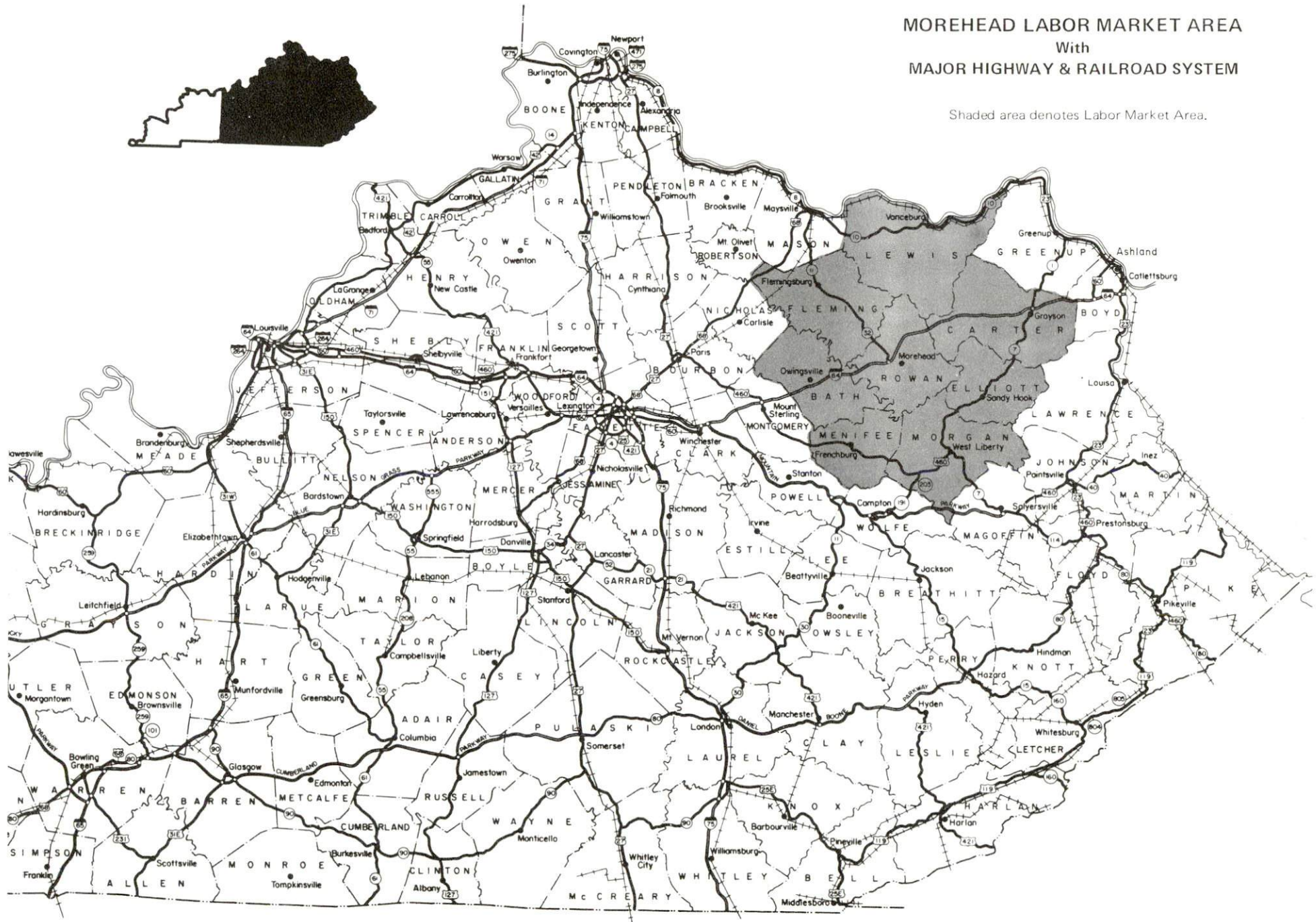
1985 EDITION
GENERAL HIGHWAY MAP
ROWAN COUNTY
KENTUCKY

PREPARED BY THE
KENTUCKY TRANSPORTATION CABINET
DEPARTMENT OF HIGHWAYS
DIVISION OF PLANNING
IN COOPERATION WITH THE
U.S. DEPARTMENT OF TRANSPORTATION
FEDERAL HIGHWAY ADMINISTRATION



MOREHEAD LABOR MARKET AREA
With
MAJOR HIGHWAY & RAILROAD SYSTEM

Shaded area denotes Labor Market Area.



MOREHEAD, KENTUCKY - A RESOURCE PROFILE

Morehead is the county seat of Rowan County and the home of Morehead State University. Morehead, with a 1984 estimated population of 7,196, is located 65 miles east of Lexington, Kentucky; 65 miles west of Huntington, West Virginia; 137 miles east of Louisville, Kentucky; and 143 miles southeast of Cincinnati, Ohio.

Rowan County, which covers a land area of 282 square miles, is located along the western edge of the Eastern Coal Field in northeastern Kentucky. In 1984, Rowan County had an estimated population of 19,049.

The Economic Framework - The total number of Rowan County residents employed in 1984 averaged 9,120, with nonagricultural jobs accounting for 8,920 workers. Manufacturing firms in the county reported 590 employees; wholesale and retail trade provided 1,360 jobs; 880 people were employed in service occupations; state and local government accounted for 1,880 employees; and contract construction firms provided 200 jobs.

Labor Supply - There is a current estimated labor supply of 10,100 men and 8,450 women available for industrial jobs in the labor market area. In addition, from 1986 through 1990, 4,600 young men and 4,430 young women in the area will become 18 years of age and potentially available for industrial jobs.

Transportation - Morehead is served by Interstate 64, U.S. 60 and Kentucky 32, all "AAA"-rated trucking highways. Six trucking companies serve Morehead with interstate and/or intrastate service. The nearest scheduled airline service is Bluegrass Airport, 5 miles west of Lexington, 70 miles west of Morehead, and Tri-State Airport (Walker-Long Field), 9 miles southwest of Huntington, West Virginia, 60 miles east of Morehead. The Morehead-Rowan County Airport, 5½ miles southwest of Morehead, has a 2,600-foot paved runway. Rail service is not available in Morehead. The nearest rail service is provided by the Chessie System Railroad at Maysville, 44 miles northwest.

Power and Fuel - Electric power is provided to Morehead and parts of Rowan County by the Kentucky Utilities Company, an electric generation and transmission company. Rowan County is also served by the Grayson Rural Electric Cooperative Corporation, Clark Rural Electric Cooperative Corporation, and Fleming-Mason Rural Electric Cooperative Corporation. Natural gas is provided to Morehead by the Morehead Utility Plant Board, which is supplied by Tennessee Gas Pipeline Company. Delta Natural Gas Company also provides natural gas to Rowan County. Two distributors of propane and two distributors of distillate fuel oil are located in Morehead.

Educaton - Primary and secondary education is provided to Morehead by the Rowan County School System. Morehead State University, a four-year college with a 1985 enrollment of 5,695, is located in Morehead. Vocational training is available at the Rowan State Vocational-Technical School also located in Morehead.

LABOR MARKET STATISTICS

The Morehead Labor Market Area includes Rowan County and the adjoining Kentucky counties of Bath, Carter, Elliott, Fleming, Lewis, Menifee and Morgan.

POPULATION				
Area	1984*	1980	1970	Percent Nonwhite 1980
Morehead	7,196	7,789	7,191	4.3
Labor Market Area	106,261	105,130	89,818	N/A
Rowan County	19,049	19,049	17,010	2.1
Bath County	10,220	10,025	9,235	3.3
Carter County	25,669	25,060	19,850	0.2
Elliott County	6,923	6,908	5,933	0.0
Fleming County	12,488	12,323	11,366	1.9
Lewis County	14,480	14,545	12,355	0.3
Menifee County	5,309	5,117	4,050	1.3
Morgan County	12,123	12,103	10,019	0.4

* Population estimates.

Note: The 1980 city counts of population by race are provisional.

Sources: U.S. Department of Commerce, Bureau of the Census, 1980 Census of Population and Housing, March 1981; 1980 Census of Population, Number of Inhabitants. University of Louisville, Urban Studies Center, Population Unit, October 1985; Kentucky Population Research Notes, Issue Number One, May 1985.

POPULATION PROJECTIONS				
Area	1990	1995	2000	2010
Labor Market Area	117,523	125,209	131,558	142,367
Rowan County	20,291	21,154	21,795	22,721
Bath County	10,847	11,297	11,618	12,106
Carter County	29,304	31,872	34,046	37,803
Elliott County	7,628	8,150	8,627	9,541
Fleming County	13,371	13,994	14,491	15,285
Lewis County	16,213	17,272	18,172	19,727
Menifee County	6,083	6,586	6,987	7,681
Morgan County	13,786	14,884	15,822	17,503

Source: University of Louisville, Urban Studies Center, Population Research Unit, How Many Kentuckians: Population Forecasts, 1980-2020, the 1984 Edition, September 1984.

LABOR FORCE CHARACTERISTICS OF RESIDENTS, 1984

	<u>Rowan County</u>	<u>Labor Market Area</u>
Civilian Labor Force	10,029	47,025
Employment	9,124	39,693
Agricultural	208	3,288
Nonagricultural	8,916	36,405
Unemployment	905	7,332
Rate of Unemployment (%)	9.0	15.6

Source: Kentucky Cabinet for Human Resources, Kentucky Labor Force Estimates, Annual Averages, 1984.

SELECTED COMPONENTS OF NONAGRICULTURAL EMPLOYMENT,
BY PLACE OF WORK, 1984

	<u>Rowan County</u>	<u>Labor Market Area</u>
All Industries (total)	5,270	16,945
Manufacturing	594	2,949
Wholesale & Retail Trade	1,358	4,103
Services	881	1,969
State/Local Government	1,883	5,021
Contract Construction	201	631
Mining & Quarrying	39	750

Note: Excludes domestic workers, railway workers, certain nonprofit corporations, majority of federal government workers, and self-employed workers.

Source: Kentucky Cabinet for Human Resources, Average Monthly Workers Covered by Kentucky Unemployment Insurance Law, 1984.

PER CAPITA PERSONAL INCOME

<u>Area</u>	<u>1979</u>	<u>1983</u>	<u>Percent Change</u>
Rowan County	\$ 4,876	\$ 7,015	43.9
Labor Market Area Range	\$3,815 - 5,285	\$4,710 - 7,015	N/A
Kentucky	7,124	9,396	31.9
U. S.	8,651	11,687	35.1

Sources: U.S. Department of Commerce, Bureau of Economic Analysis; Commerce News, August 28, 1984; May 7, 1985. Kentucky Economic Information System, June 1985.

ESTIMATED MALE LABOR SUPPLY
MOREHEAD LABOR MARKET AREA

Area	Current			Not in Labor Force	Future
	Total Male	Unemployed	Under- employed		Becoming 18 years of age 1986 thru 1990
Labor Market					
Area*	10,096	5,269	3,313	1,514	4,604
Rowan	1,313	584	729	0	663
Bath	692	396	288	8	414
Carter	2,628	1,496	751	381	1,162
Elliott	763	478	285	0	337
Fleming	772	372	255	145	505
Lewis	1,594	687	382	525	719
Menifee	908	219	234	455	240
Morgan	1,426	1,037	389	0	564

ESTIMATED FEMALE LABOR SUPPLY
MOREHEAD LABOR MARKET AREA

Area	Current			Not in Labor Force	Future
	Total Female	Unemployed	Under- employed		Becoming 18 years of age 1986 thru 1990
Labor Market					
Area*	8,446	2,063	2,640	3,743	4,433
Rowan	1,106	321	785	0	660
Bath	565	168	218	179	424
Carter	2,392	605	478	1,309	1,136
Elliott	435	89	147	199	302
Fleming	946	209	332	405	510
Lewis	1,221	282	376	563	656
Menifee	612	147	104	361	230
Morgan	1,169	242	200	727	515

* Additional workers may be drawn from other nearby counties.

Note: Unemployed - persons unemployed and actively seeking work;
Underemployed - persons employed but working only 14 to 26 weeks per year;
Not in Labor Force - represents the number of persons who would enter the labor force if suitable employment were available (based on the assumption that persons in Kentucky would like to participate in the labor force in the same proportion that they do nationally).

Sources: Kentucky Cabinet for Human Resources, Kentucky Labor Supply Estimates by County, 1984. Kentucky Department of Economic Development, Future Labor Supply Becoming 18 Years of Age, 1986 thru 1990.

AVERAGE WEEKLY WAGES BY INDUSTRY,
BY PLACE OF WORK, 1984

	<u>Rowan County</u>	<u>Bath County</u>	<u>Carter County</u>	<u>Elliott County</u>
All Industries	\$260.48	\$253.90	\$240.82	\$231.78
Mining & Quarrying	325.55	0	439.45	300.28
Contract Construction	305.07	471.38	325.46	*
Manufacturing	253.24	169.22	185.88	182.56
Transportation, Communications & Public Utilities	390.98	371.25	381.03	348.41
Wholesale & Retail Trade	166.63	173.99	172.23	121.77
Finance, Insurance & Real Estate	314.72	222.67	252.13	*
Services	271.77	147.16	183.52	128.75
State/Local Government	303.71	266.73	280.15	250.80
Other	183.58	0	200.68	0
	<u>Fleming County</u>	<u>Lewis County</u>	<u>Menifee County</u>	<u>Morgan County</u>
All Industries	\$223.67	\$195.34	\$223.43	\$271.34
Mining & Quarrying	*	0	324.98	450.29
Contract Construction	410.77	138.20	*	242.15
Manufacturing	195.71	167.03	184.51	204.53
Transportation, Communications & Public Utilities	371.30	204.84	194.98	331.63
Wholesale & Retail Trade	184.60	153.59	196.46	182.76
Finance, Insurance & Real Estate	245.58	233.68	106.40	266.69
Services	160.04	154.41	113.76	217.95
State/Local Government	259.83	274.80	266.06	277.34
Other	163.01	0	0	99.72

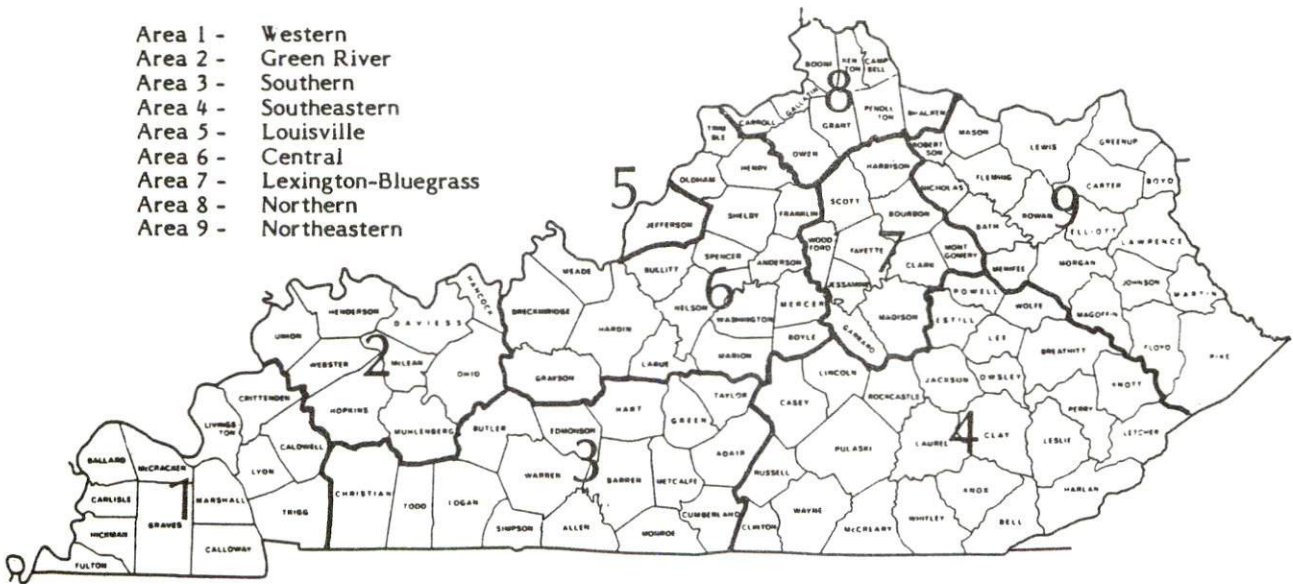
* Not disclosed.

Note: Excludes domestic workers, railway workers, certain nonprofit corporations, majority of federal government workers, and self-employed workers.

Source: Kentucky Cabinet for Human Resources, Average Weekly Wages of Workers Covered by Kentucky Unemployment Insurance Law, 1984.

Occupational wage rates for specific industries are usually not available to most government agencies, and wage data furnished to state employment agencies by individual industrial employers are protected from disclosure by federal law. The most reliable up-to-date wage information can be obtained by direct contact with local employers.

Associated Industries of Kentucky, a voluntary organization of Kentucky businesses, regularly collects occupational wage rates and fringe benefits data from participating member firms. Data are compiled for over 127 clearly defined office, production, and service occupations. Tabulations are published for nine geographical areas of Kentucky, as shown on the map below. It should be noted that the data may be weighted by the preponderance of firms in the larger cities and may be somewhat higher than the rates paid in the smaller communities. Data from these tabulations are available, upon request, from the Kentucky Department of Economic Development, Frankfort, Kentucky 40601.



Associated Industries of Kentucky Area Wage Surveys

EXISTING INDUSTRY

MOREHEAD MANUFACTURING FIRMS, THEIR PRODUCTS AND EMPLOYMENT

Firm (Establishment date)	Product	Employment			Labor Unions
		Total	Male	Female	
Alexanders Red Cottage Gallery, Inc. (1965)	Picture and mirror frames	3	1	2	
B & W Pallet Company (1965)	Pallets, lumber, sawdust	41	40	1	
Big Sandy Ready Mix Concrete, Inc. (1974)	Ready-mix concrete	6	--	--	
Cowden-Morehead Company (1953)	Jeans	165	20	145	Aluminum, Brick and Glass Workers*
Daniel Boone Lumber Industries, Inc. (1983)	New and reconditioned pallets, lumber, hardwood, fencing boards	20	--	--	
Day Concrete Products Company, Inc. (1971)	Concrete products, concrete burial vaults	3	3	0	
East Kentucky Paving Corporation (1968)	Asphalt	30	30	0	
Homer Gregory Company, Inc. (1944)	Rough and kiln dried lumber, dimension stock	58	56	2	
Ken-Mor Stone Company, Inc. (1964)	Crushed limestone	69	65	4	Steelworkers*

(Continued)

<u>Firm</u> (Establishment date)	<u>Product</u>	<u>Employment</u>			<u>Labor Unions</u>
		<u>Total</u>	<u>Male</u>	<u>Female</u>	
Kieffer Furniture Works (1985)	Custom furniture, custom wood cabinets	3	--	--	
Morehead Driveshafts Service, Inc. (1985)	Driveshafts	2	--	--	
The Morehead News (1883)	Newspaper, commercial job printing	31	13	18	
Motor Sales and Service, Inc. (1984)	Machine shop, electric motor, rebuild	3	3	0	
Rowan County Steel Division, Grant County Steel, Inc. (1983)	Steel fabrication	10	9	1	
Sealmaster Bearings, Morse Industrial Corp., Subsidiary of Emerson Electric Company (1975)	Bearing units, iron bushings	168	--	--	
Tecumseh Woodworking Company (1984)	Wood boxes, crates, pallets	14	13	1	
J. C. Wells & Sons, Inc. (1953)	Pallets, hardwood lumber, fencing boards	52	50	2	
Harold White Lumber, Inc. (1968)	Kiln dried lumber, hardwoods	46	42	4	
Ray L. White & Sons, Inc. (1952)	Furniture lumber, surfaced lumber, kiln dried lumber, pallet parts	40	38	2	

(Continued)

<u>Firm (Establishment date)</u>	<u>Product</u>	<u>Employment</u>			<u>Labor Unions</u>
		<u>Total</u>	<u>Male</u>	<u>Female</u>	
Richard White Wood Products, Inc. (1980)	Custom work lumber, veneer logs, wood chips	23	20	3	
Wood Products, Inc. (1983)	Fence posts, speciality plywood containers	15	--	--	

*See Labor Organizations below.

Sources: Kentucky Department of Economic Development, 1986 Kentucky Directory of Manufacturers; Division of Research and Planning

LABOR ORGANIZATIONS IN MANUFACTURING FIRMS

<u>Union</u>	<u>Representing workers at:</u>
Aluminum, Brick and Glass Workers International Union, AFL-CIO	Cowden-Morehead Company
United Steelworkers of America, AFL-CIO	Ken-Mor Stone Company

SELECTED INDUSTRIAL SERVICES

<u>Types of Services</u>	<u>Location</u>	<u>Mileage from Morehead</u>
Custom Plastics Producers	Mt. Sterling, Kentucky	31
Electric Motor Repair	Morehead, Kentucky	-
Grinding, Precision & Tool	Winchester, Kentucky	46
Heat Treating Facilities	Lexington, Kentucky	65
Industrial Equipment & Supplies	Ashland, Kentucky	59
	Lexington, Kentucky	65
	Huntington, West Virginia	65
Industrial Gases	Lexington, Kentucky	65
	Huntington, West Virginia	65
Industrial Waste Removal	Ashland, Kentucky	59
	Lexington, Kentucky	65
Machine Shops, Tool & Die	Morehead, Kentucky	-
	Mt. Sterling, Kentucky	31
Metal Finishers	Lexington, Kentucky	65
Metal Service Centers	Morehead, Kentucky	-
Millwrights	Lexington, Kentucky	65
Public Warehouse Facilities	Paris, Kentucky	55
	Lexington, Kentucky	65

Sources: Kentucky Department of Economic Development, Kentucky Directory of Selected Industrial Services, 1985; Division of Research and Planning.

TRANSPORTATION

Rail

Direct rail service to Morehead is not available at the present time. The nearest rail service is provided by the Chessie System Railroad at Maysville, 44 miles northwest.

Highways

Morehead is served by Interstate 64, U.S. 60 and Kentucky 32, all "AAA"-rated (80,000-pound gross load limit) trucking highways. Interstate 64 provides easy access to Interstate 75, a major north-south route, 59 miles west. In addition, Kentucky 377 and Kentucky 519 serve Rowan County.

An interchange with Interstate 64 and Kentucky 801, 11 miles west of Morehead, is in the planning stages. The new interchange will provide direct access to Cave Run Lake.

There are tentative plans for the construction of a bypass around Morehead.

Truck Service

ARA/Smith's*
Bestway Express, Inc.**
Budig Western**
Craig's Express, Inc.**

Manning Motor Express, Inc.**
Overnite Transportation
Company**

* Interstate only.

** Interstate and intrastate.

Source: American Motor Carrier Directory, Spring 1986.

HIGHWAY MILES AND TRUCK TRANSIT TIME IN DAYS FROM
MOREHEAD, KENTUCKY, TO SELECTED MARKET CENTERS

City	Highway Miles	Delivery Time TL	City	Highway Miles	Delivery Time TL
Atlanta, Ga.	427	1	Los Angeles, Ca.	2,245	5
Baltimore, Md.	496	2	Louisville, Ky.	137	1
Birmingham, Ala.	463	1	Nashville, Tenn.	275	1
Chicago, Ill.	417	1	New Orleans, La.	792	3
Cincinnati, Ohio	143	1	New York, N. Y.	668	-
Cleveland, Ohio	358	1	Pittsburgh, Pa.	328	1
Detroit, Mich.	402	1	St. Louis, Mo.	400	1
Knoxville, Tenn.	229	1			

Note: Mileage computations are via the best interstate or primary highways, not necessarily the most direct route of travel.

Sources: Rand McNally Road Atlas, 1979. Official Kentucky Mileage Map, 1985.
Delivery time - Overnite Transportation Company, 1020 Whipple Court,
Lexington, Kentucky 40574.

Air

Local

Location: Morehead-Rowan County Airport
 Runways: 5½ miles southwest of Morehead
 Length: 1 paved
 Traffic: 2,600 feet
 Control: Wind sock, unicom
 Lighting: Runway lights, rotating beacons, lighted wind sock
 Services: Flight instruction, ground school, aircraft charter and leasing
 Air Freight Service: Chartered air freight service must be arranged

(Continued)

Nearest Scheduled Commercial Airline Service

Location: Bluegrass Airport
5 miles west of Lexington, Kentucky;
70 miles west of Morehead

Runways: 2 paved
Length: 7,000 feet; 3,500 feet

Traffic Control: Tower

Lighting: Approach lighting system, beacon, runways and obstructions lighted, VASI

Services: Delta, Piedmont, United, USAir, Allegheny Commuter, Piedmont Commuter, Eastern Metro, Comair, American Eagle; fuel - 100LL and jet-A; hangars, tie-downs; major A & P repairs; major Avionics repairs; APU, charter, flight instruction, oxygen, plane rentals, survival equipment; taxi, limousine, car rentals, courtesy car, weather information; restaurant, snack bar

Air Freight Service: Air freight terminal

Location: Tri-State Airport (Walker-Long Field)
9 miles southwest of Huntington, West Virginia;
60 miles east of Morehead

Runways: 2 paved
Length: 6,509 feet and 3,007 feet

Traffic Control: Tower

Lighting: Beacon, runway

Services: Piedmont, USAir, Comair; fuel - 100LL, jet-A; tie-downs, hangars; major A & P repairs, major Avionics repairs; APU, charter, flight instruction, oxygen, plane rental, survival equipment, U.S. Customs; taxi, limousine, car rental; weather information; restaurant

Air Freight Service: Air freight terminal

Air Express Service

Several major companies offer air express services in Kentucky. These companies provide a quick means of shipping small to medium-sized packages expeditiously.

Water

The nearest navigable river is the Ohio River. Morehead is 44 miles southeast of a point on the Ohio River at Maysville, Kentucky, where a nine-foot navigation channel is maintained. A public riverport is proposed for Maysville.

POWER AND FUEL

Electricity

Company serving **Morehead and central Rowan County** - Kentucky Utilities Company

Source of power - Kentucky Utilities Company
For industrial rates contact:

Industrial Development Department
Kentucky Utilities Company
One Quality Street
Lexington, Kentucky 40507
(606) 255-1461

Company serving **northeastern Rowan County** - Kentucky Power Company

Source of power - Kentucky Power Company
For industrial rates contact:

Kentucky Power Company
1701 Central Avenue
P.O. Box 1428
Ashland, Kentucky 41101
(606) 329-2220

Company serving **southeastern portion of Rowan County** - Grayson Rural Electric Cooperative Corporation

Source of power - East Kentucky Power Cooperative

Company serving **southwestern portion of Rowan County** - Clark Rural Electric Cooperative Corporation

Source of power - East Kentucky Power Cooperative

Company serving **northwestern portion of Rowan County** - Fleming-Mason Rural Electric Cooperative Corporation

Source of power - East Kentucky Power Cooperative

For industrial rates contact:

Industrial Development Division
East Kentucky Power Cooperative
P.O. Box 707
Winchester, Kentucky 40391
(606) 744-4812

Natural Gas

Company serving **Morehead** - Morehead Utility Plant Board*

Source of supply - Tennessee Gas Pipeline Company
Size of transmission mains - 36-inch (supplier); 6-inch (distributor)
Distribution mains - 2 to 8 inches
Distribution pressure - 15 to 60 psi
Btu content - 1,025 per cubic foot
Specific gravity - .60
For rates and supplies contact:

Morehead Utility Plant Board
109 Bishop Avenue
Morehead, Kentucky 40351
(606) 784-5538

Company serving **portions of Rowan County** - Delta Natural Gas Company

Source of supply - Tennessee Gas Pipeline Company
Size of transmission mains - 30-inch (supplier); 2 and 4 inches (distributor)
Distribution mains - 2-inch
Distribution pressure - 15 psi
Btu content - 1,040 per cubic foot
Specific gravity - 0.61
For rates and supplies contact:

Marketing Manager
Delta Natural Gas Company
Route 1, Box 30-A
Winchester, Kentucky 40391
(606) 744-6171

Other Fuels

Propane

Buckeye Gas Products
(bulk plant)
U.S. 60 East
Morehead, Kentucky 40351

Empiregas, Inc., of Morehead
(bulk plant)
U.S. 60 East
Morehead, Kentucky 40351

Fuel oils

Distillate fuel oil -

Ashland Oil and Refining
Company (bulk plant)
218 Rowan Street
Morehead, Kentucky 40351

Williams-Nickell Oil Company
(bulk plant)
237 East First Street
Morehead, Kentucky 40351

Residual fuel oil - Arrangements must be made with the refinery.

Low sulphur content coal - Available in Kentucky.

* The Morehead Utility Plant Board completely upgraded its natural gas system in 1984. The \$1.8 million project consisted of replacement of all existing steel distribution lines with plastic lines.

WATER AND SEWERAGE

Public Water Supply

Company serving **Morehead** - Morehead Utility Plant Board*
109 Bishop Avenue
Morehead, Kentucky 40351
(606) 784-5538

Source - Licking River

Treatment plant capacity - 5,000,000 gallons per day

Average daily consumption - 1,600,000 gallons

Peak daily consumption - 2,200,000 gallons

Treatment processes - Aeration, coagulation, sedimentation, chlorination,
rapid mix, flocculation, filtration, fluoridation

Storage capacity - 3,550,000 gallons including clear well

Size lines - 1 to 16 inches

Water pressure - 30 to 150 psi

MONTHLY WATER RATES

First	2,000 gallons	\$6.95 (Minimum bill)
Next	4,000 gallons	2.80 per M gallons
Next	4,000 gallons	2.45 per M gallons
Next	20,000 gallons	2.10 per M gallons
Next	20,000 gallons	1.75 per M gallons
Next	250,000 gallons	1.40 per M gallons
All over	300,000 gallons	1.20 per M gallons

There is a 20 percent surcharge for customers outside the city limits.

Tap-on charge:

3/4-inch meter -	\$300
1-inch meter -	400
1 1/2-inch meter -	500
2-inch meter -	750

* The Morehead Utility Plant Board is in the process of upgrading water intake facilities to handle 5 million gallons per day. Total cost of the project will be \$1 million. Also, there are plans to build an additional water tank. A decision on the size has not been made.

Name of water district - Rowan Water, Inc.*
 110 Hargis Avenue
 Morehead, Kentucky 40351
 (606) 784-9818

Area served - Rural Rowan and Fleming Counties
 Date when water district began operating - March 1969
 Source of supply of treated water - Morehead Utility Plant Board
 Average amount of water used in a 24-hour period - 350,000 gallons
 Peak amount of water used in a 24-hour period - 375,000 gallons
 Storage capacity - 290,000 gallons
 Size lines - 2 to 12 inches
 Water pressure - 30 to 165 psi

MONTHLY WATER RATES

First	2,000 gallons	\$8.90 Minimum
Next	3,000 gallons	3.20 per M gallons
Next	10,000 gallons	2.80 per M gallons
Next	10,000 gallons	2.40 per M gallons
Next	10,000 gallons	2.20 per M gallons
Next	15,000 gallons	2.00 per M gallons
All over	50,000 gallons	1.75 per M gallons

Minimum Monthly Charges

5/8-inch meter	2,000 gallons	\$ 8.90
3/4-inch meter	4,000 gallons	15.30
1-inch meter	5,000 gallons	18.50
1 1/2-inch meter	15,000 gallons	46.50
2-inch meter	25,000 gallons	70.50

Tap-on charge:

5/8-inch meter -	\$260
3/4-inch meter -	300
1-inch meter -	350
1 1/2-inch meter -	650
2-inch meter -	845

* Rowan Water, Inc., is currently adding new water lines in Rowan County. The \$1,750,000 project, which will be completed in Fall 1986, will allow service to be provided to an additional 340 customers.

Sewerage

Company serving **Morehead** - Morehead Utility Plant Board*
109 Bishop Avenue
Morehead, Kentucky 40351
(606) 784-5538

Design capacity - 2,500,000 gallons per day

Average daily flow - 1,880,000 gallons

Type of treatment - Primary and secondary

Treatment processes - Screening, grit removal, primary sedimentation, activated sludge, secondary sedimentation, chlorination, anaerobic digester, filter press

Treated effluent discharged into - Licking River

Size of sanitary mains - 6 to 36 inches

Size of storm mains - 36 inches

Monthly rates -

First	2,000 gallons	\$6.75 Minimum
Next	4,000 gallons	2.30 per M gallons
Next	4,000 gallons	2.10 per M gallons
Next	20,000 gallons	2.00 per M gallons
Next	20,000 gallons	1.90 per M gallons
Next	250,000 gallons	1.75 per M gallons
All over	300,000 gallons	1.60 per M gallons

There is a 20 percent surcharge for customers outside the city limits.

Tap-on charge: \$600

* The Morehead Utilities Plant Board has plans to upgrade the capacity of the sewerage treatment plant to 3.5 million gallons per day. No set date has been determined at the present time.

CLIMATE

Rowan County

Temperature

Normal (30-year record)	54.90 degrees
Average annual 1984	55.30 degrees
Record highest, August 1983 (40-year record)	103.00 degrees
Record lowest, January 1963 (40-year record)	-21.00 degrees
Normal heating degree days (30-year record) (Heating degree day totals are the sums of negative departures of average daily temperatures from 65 degrees F.)	4,814

Precipitation

Normal (30-year record)	45.68 inches
Mean annual snowfall (29-year record)	16.30 inches
Total precipitation 1984	42.27 inches
Mean number days precipitation (.01 inch or more) (40-year record)	130.80
Mean number days thunderstorms (40-year record)	46.00

Prevailing Winds (through 1963)

South

Relative Humidity

1 a.m.	77 percent (20-year record)
7 a.m.	81 percent (21-year record)
1 p.m.	60 percent (21-year record)
7 p.m.	64 percent (21-year record)

Source: U.S. Department of Commerce, Environmental Science Services Administration, Climatological Data, 1984. Station of record: Lexington, Kentucky.

LOCAL GOVERNMENT

Structure

Morehead is served by a mayor and six council members. Morehead is also served by an administrative assistant to the mayor. Rowan County is served by a county judge/executive and four magistrates.

Planning and Zoning

Joint agency - Morehead-Lakeview Heights-Rowan County Planning Commission
Participating cities - Morehead and Lakeview Heights
Zoning enforced - Within the city limits of Morehead and Lakeview Heights
Subdivision regulations enforced - Within the city limits of Morehead and Lakeview Heights
Local codes enforced - Building and Housing within the cities of Morehead and Lakeview Heights
Mandatory state codes enforced - Kentucky Plumbing Code, National Electric Code, Kentucky Boiler Regulations and Standards, Kentucky Building Code (modeled after BOCA code)

Local Fees and Licenses

Morehead levies an occupational license fee of one percent of all salaries, wages, commissions, and other compensation earned in the city or work done or services performed in the city, and one percent of the net profits for activity conducted in the city during the preceding year. Certain businesses are required to pay a minimum fee.

A 3 percent tax is levied on utilities receipts for schools in Rowan County. Tax is paid by all consumers of utilities as an add-on to the utilities bills. Exempted are receipts from utilities services that are resold and the receipts from the sale of energy or energy producing fuels that exceed 3 percent of the cost of production in manufacturing, processing, mining or refining.

State and Local Property Taxes

All property in Kentucky, except items exempted by the state constitution, is taxed by the state. Property which also may be taxed by local jurisdictions includes land and buildings, finished goods inventories, automobiles, trucks, office furniture and office equipment. Local taxing jurisdictions in Kentucky include counties, cities, and school districts.

All property in Kentucky is assessed at 100 percent of fair cash value.

COMBINED STATE AND LOCAL RATES PER \$100 VALUATION, 1985

	<u>Morehead</u>	<u>Unincorporated Rowan County</u>
Land and Buildings	\$ 0.846	\$ 0.631
Manufacturing Machinery	0.150	0.150
Pollution Control Equipment	0.150	0.150
Inventories		
Raw materials	0.001*	0.001*
Goods in Process	0.001*	0.001*
Finished Goods	0.660*	0.438*
Automobiles and Trucks	1.106	0.884
Other Tangible Personal Property	1.109	0.887
Intangibles (Accounts receivable, money in hand, stock, notes, bonds)	0.250**	0.250**
Goods Stored in Public Warehouses in Transit Status	0.001*	0.001*
Private Leaseholds in Industrial Revenue Bond Financed Facilities	0.015	0.015

* Includes 1986 state rate.

** Accounts receivable are taxed at 85 percent of face value, for an effective rate of \$0.2125 per \$100 valuation.

Safety

Police	Morehead	Rowan County
Total staff	16	5 full-time 1 part-time
Radio-patrol cars	7	3
Fire*	Morehead**	Rowan County
Insurance Services Office, Public Protection Classification	6	10
Part-time staff	3	
Volunteers	30	30

Rescue Service

Morehead-Rowan County Rescue Squad/Volunteer

Refuse Collection and Disposal

The city of Morehead provides municipal refuse collection to residential, business and industrial customers. Refuse collection can also be arranged with private contractors.

* Includes copyrighted material of ISO Commercial Risk Services, Inc., with its permission.

** In October of 1985 the city of Morehead purchased a new 110-foot aerial ladder fire truck.

EDUCATION

Public Schools

	Rowan County*
Total Enrollment (February 1986)	3,165
Kindergarten	249
Elementary	1,253
Middle School	720
High School	943
Pupil-Teacher Ratio (1984-85)	22-1
Percent High School Graduates to College (1984-85)	43.9
Expenditures Per Pupil (1984-85)	\$1,788.86

* The Rowan County School System recently completed construction of a new bus garage and the renovation of the central offices. Recent additions to the curriculum included an elementary art program, a vocal music program, strings program, and a dropout prevention program.

Area Colleges and Universities

<u>Name</u>	<u>Location (Miles distant)</u>	<u>Enrollment (Fall, 1985)</u>	<u>Highest Degree Conferred</u>
Morehead State University	Morehead, Kentucky	5,695	Masters, Specialist*
Kentucky Christian College	Grayson, Kentucky (38)	536	Baccalaureate
Maysville Community College	Maysville, Kentucky (44)	766	Associate
Ashland Community College	Ashland, Kentucky (59)	1,922	Associate
Lexington Community College	Lexington, Kentucky (65)	2,538	Associate
Transylvania University	Lexington, Kentucky (65)	856	Baccalaureate**
University of Kentucky	Lexington, Kentucky (65)	20,895	Doctorate, M.D., D.M.D., J.D.
Ohio University (Ironton Campus)	Ironton, Ohio (65)	1,360	Academic and Professional
Marshall University	Huntington, West Virginia (65)	11,320	Academic and Professional

Morehead State University

Morehead State University was founded in 1922 and received university status in 1966. The university offers more than 130 separate academic programs on the associate, baccalaureate, and graduate levels. The university's academic structure consists of three colleges encompassing 18 departments. The campus consists of 500 acres within the city limits of Morehead and a 320-acre agricultural complex north of the city. Morehead State University was one of the first colleges in the state to offer courses in robotic engineering technology.

The Appalachian Development Center was established in 1978 as Morehead State University's regional service arm. The center is committed to economic, social and educational development in partnership with the people and institutions of Appalachian Kentucky. The center's major program areas are business development, regional research, community services and Appalachian studies.

* Joint doctoral degree programs are offered in cooperation with the University of Kentucky, Lexington. The degrees are issued by the University of Kentucky.

** Courses in a masters degree program are taught on the Transylvania campus by faculty members of Xavier University of Cincinnati. The degree is issued by Xavier University.

Vocational Schools

The Kentucky Department of Education operates both the state vocational-technical schools and the area vocational education centers. The state vocational-technical schools are post-secondary institutions. The area vocational education centers are designed to supplement the curriculum of high school students. Both the state vocational-technical schools and the area vocational education centers offer evening courses to enable working adults to upgrade current job skills.

Arrangements can be made to provide training in the specific production skills required by an industrial plant. Instruction may be conducted either in the vocational school or in the industrial plant, depending upon the desired arrangement and the availability of special equipment.

Nearest State School

Rowan State Vocational-Technical School*
Morehead

Agriculture	Carpentry
Adult Farmer	Diesel Mechanics
Business & Office	Drafting
Clerical	Electricity
Secretarial	Machine Shop
Word Processing	Welding
Health & Personal Services Occupations	Special Vocational Programs
Health Careers	Consumer & Family Life Skills
Practical Nursing	Computer/Literacy
Respiratory Therapy	Public Service Occupations
Industrial Education	Fire Fighter Training
Air Conditioning/Refrigeration	Learning Resource Center
Auto Mechanics	

* The Rowan State Vocational School began operation in the fall of 1985.

HEALTH

Local Medical Personnel

Physicians - 49

Dentists - 9

Hospitals

<u>General Hospital</u>	<u>Location</u>	<u>Beds</u>
St. Claire Medical Center	Morehead	170

Medical staff - 39 doctors, 28 registered nurses, and 23 licensed practical nurses

Other Medical Facilities

Cave Run Clinic

Dialysis Clinic

Morehead Clinic

Pathways, Inc.

Rowan County District Health Department

Ambulance Service

Name - Morehead-Rowan County Ambulance Service, Inc.

Staff - 9 full-time emergency medical technicians and 5 part-time emergency medical technicians

OTHER LOCAL FACILITIES

Communications

Telephone -	General Telephone Company
Telegraph -	Western Union Toll-free number, 1-800-325-6000
Newspaper - Bi-weekly and circulation -	The Morehead News - 6,700
Radio -	WMOR-AM/FM; WMKY-FM
Television - Airwave reception from - Cable service - Educational television -	Lexington, Kentucky; Huntington, West Virginia Centel Cable TV of Kentucky The Kentucky Educational Television (K.E.T.) network is available statewide

Library Services

Public library - Rowan County Public Library
Size collection - 36,482 volumes
Circulation, 1984-85 - 105,010

University library - Camden-Carroll Library, Morehead State University (open to the public)
Size collection - 962,122 resource units
Special collections - Kentucky Room

Religious Institutions

Denominations -	Assembly of God	Jehovah's Witness
	Baptist	Methodist
	Catholic	Missionary
	Christian	Nazarene
	Church of Christ	Pentecostal
	Church of God	Presbyterian
	Episcopal	Seventh Day Adventist

Nearest Synagogues - Ashland, 59 miles east
Congregations - Aqudath Achim (reform)

Financial Institutions

<u>Banks</u>	<u>Assets</u>	<u>Deposits</u>	<u>Statement Date</u>
The Citizens Bank	\$24,477,984.49	\$21,281,290.98	12/31/85
Morehead National Bank*	12,686,000.00	11,233,000.00	9/30/85
Peoples Bank	40,299,950.71	35,938,915.28	6/30/85

<u>Savings and Loan Associations</u>	<u>Assets</u>	<u>Savings Accounts</u>	<u>Statement Date</u>
First Federal Savings and Loan Association of Morehead	\$28,559,674.04	\$26,357,520.44	12/31/85

Hotels and Motels

Total number - 3
Total rooms - 217

* The Morehead National Bank constructed a new 3-story complex and began operation in Fall 1985.

RECREATION

Local

Morehead's wide variety of recreational facilities provide year-round activity. Outdoor facilities include five baseball fields (three are lighted), two playgrounds, olympic-size swimming pool, outdoor multi-purpose court, four lighted tennis courts, a drive-in theater and a sheltered picnic area at the municipal park. Indoor facilities include two theaters; a senior citizens center at the municipal park; and the Carl D. Perkins Community Center which contains meeting rooms, a kitchen, and an arts and crafts area. Organized activities are sponsored by the Morehead-Rowan County Police Youth Athletic League.

Construction of the new Morehead-Rowan County Community Park is under way. The new park, which will be completed in Summer 1986, will contain a baseball field, two softball fields, four tennis courts, a multi-purpose field, restroom facilities, and concessions.

Morehead State University provides the community with many recreational facilities and activities. The public is permitted to use such university facilities as the indoor swimming pool, the golf course, and 24 lighted tennis courts. The university also provides an exhibition center on a university farm for horse shows, cattle shows, etc. All Morehead State University sporting events are also open to the public.

A wealth of cultural activities can be found in Morehead. The Morehead-Rowan County Arts Council schedules ballets, operas, etc., and utilizes Morehead State University facilities for these events.

The university supports cultural awareness with a university lecture series, art exhibits, music concerts, and other programs.

The Appalachian Development Center sponsors the Appalachian Celebration in Morehead, which features music and crafts. The festival is held annually the last week in June.

Other events include the Harvest Festival and the Kentucky Logging Show.

Cave Run Lake, constructed by the U.S. Army Corps of Engineers, is located 10 miles southwest of Morehead within the 640,000-acre Daniel Boone National Forest. The lake area offers everything for the camper, the boatsman, the hunter, the fisherman, and "the lover of leisure."

Rowan County is located within the northern edge of the **Daniel Boone National Forest**, which covers 640,000 acres of timberland in eastern Kentucky. It encompasses much of Kentucky's great beauty and provides a vacation paradise. There are scenic hiking trails, rivers and streams stocked with a variety of fish, hunting preserves, camping sites, and numerous other natural and historical attractions.

Area (Within 70 miles)

Carter Caves State Resort Park, 27 miles northeast of Morehead, provides a restful atmosphere with its mountain wildflowers, a rippling stream, the underground wonders of three caves, a 28-room lodge, a restaurant, and a gift shop. Recreational facilities available include something for the whole family with playgrounds, two swimming pools (one Olympic-size), tennis courts, shuffleboard, a 9-hole golf course, miniature golf, boating, fishing, horseback riding, picnicking, and cave tours.

Grayson Lake State Park is located 46 miles east of Morehead near Grayson. Facilities available include 71 campsites, a beach, and a picnic area. Good fishing and organized recreational programs can be found during the summer. The park is located in the 7,350-acre Grayson Lake Wildlife Area.

The spirit of Daniel Boone and his pioneers is reborn at **Fort Boonesborough State Park** in Boonesboro, 51 miles west of Morehead. In the re-created fort, pioneer crafts of the eighteenth century are demonstrated by using functioning antiques from the frontier era. Cabins are furnished as they would have been in the days of Boone and documentary films are presented which depict the struggle of the first Kentuckians to make the Kentucky wilderness a home. A gift shop within the fort offers for sale all the handcrafted items made at the fort. Other recreational facilities and activities of the park include the finest sand beach on the Kentucky River with a modern bathhouse and a modern camping area with 187 sites.

Greenbo Lake State Resort Park, which is located 52 miles northeast of Morehead near Ashland, has a magnificent fieldstone lodge. The lodge offers 36 rooms, a dining room, a gift shop, a meeting room, a lodge pool, and a recreation room. Other facilities and activities at or near the park include a well-equipped campground, a marina, miniature golf, tennis courts, playgrounds, shuffleboard, planned recreation, fishing, hiking, horseback riding, and picnicking.

White Hall State Shrine, 61 miles southwest of Morehead near Richmond, one of the grand estate houses of post-Civil War Kentucky, is the Italianate mansion of Cassius Marcellus Clay, the early abolitionist and politician. Kentucky handcrafts are sold in the White Hall gift shop, only a short walk from the mansion.

Lexington, 65 miles west of Morehead, offers a variety of cultural, sporting, and recreational activities. Thoroughbred and harness racing is presented at Keeneland Race Course and the Red Mile Harness Track during several meets each year. The University of Kentucky and Transylvania University offer a number of sporting events. The University of Kentucky basketball games are held at Rupp Arena, the world's largest basketball arena. Other attractions include Lexington Philharmonic concerts, Lexington Children's Theatre, and plays performed by Broadway touring companies, all held in the recently renovated Opera House.

The Kentucky Horse Park, a park dedicated to horses and to man's love for horses, is located 67 miles west of Morehead near Lexington. The park, which contains more than 1,000 acres of Kentucky Bluegrass, features the International Museum of the Horse; the Man O'War Memorial; an antique carriage display; horseback and pony rides; walking farm tours; horse-drawn tours; a restaurant; a gift shop; and a campground area, which offers swimming, tennis, and planned activities. Numerous special events are held year-round and include various horse shows, steeplechasing, dressage, polo games, and rodeos.

Waveland State Shrine, 70 miles west of Morehead near Lexington, features an 1847 Greek Revival mansion depicting Kentucky lifestyles from the days of early settlers to the antebellum era of gentility and elegance as well as the Civil War and postwar periods. The shrine also includes the Kentucky Life Museum and a plantation village on ten acres with many shops and displays.

COMMUNITY IMPROVEMENTS

Recent

The Morehead Utility Plant Board completely upgraded its natural gas system in 1984. The \$1.8 million project consisted of replacement of all existing steel distribution lines with plastic lines.

The Rowan State Vocational School began operation in the fall of 1985.

The Rowan County School System recently completed construction of a new bus garage and the renovation of the central offices. Also, additions to the curriculum included an elementary art program, a vocal music program, strings program, and a dropout prevention program.

Landmark Enterprizes, a 48-unit apartment complex, opened in 1985. An additional 24-unit complex has been proposed for the future.

The city of Morehead installed a new \$100,000 communications system for the police and fire departments in 1986.

A downtown revitalization program has recently been started in Morehead.

In October of 1985 the city of Morehead purchased a new 110-foot aerial ladder fire truck.

The city of Morehead has recently purchased a new garbage packer, a back-hoe, and snow removal equipment.

The installation of a new lighting system at the city park was completed in Summer 1985.

The Morehead National Bank constructed a new 3-story complex and began operation in Fall 1985.

Under Way

The Morehead Utilities Plant Board is in the process of upgrading water intake facilities to handle 5 million gallons per day. Total cost of the project will be \$1 million.

Rowan Water, Inc., is currently adding new water lines in Rowan County. The \$1,750,000 project, which will be completed in Fall 1986, will allow service to be provided to an additional 340 customers.

Construction of the new Morehead-Rowan County Community Park is under way. The new park, which will be completed in Summer 1986, will contain a baseball field, two softball fields, four tennis courts, a multi-purpose field, restroom facilities, and concessions.

Planned

An interchange with Interstate 64 and Kentucky 801, 11 miles west of Morehead, is in the planning stages. The new interchange will provide direct access to Cave Run Lake.

There are plans for the relocation of the county garage and ambulance service facilities in 1986.

The Morehead Utilities Plant Board has plans to upgrade the capacity of the sewerage treatment plant to 3.5 million gallons per day. No set date has been determined at the present time.

The Morehead Utilities Plant Board has plans to build an additional water storage tank. A decision on the size has not been made.

The city of Morehead has plans to expand the size of city maintenance garages in Summer 1986.

There are tentative plans for the construction of a bypass around Morehead.

The Morehead-Rowan County Disaster and Emergency Service has plans to build a new facility.

A new post office is planned for construction in 1986.