

1984

Industrial Resources: Shelby County - Shelbyville

Kentucky Library Research Collections
Western Kentucky University, spcol@wku.edu

Follow this and additional works at: https://digitalcommons.wku.edu/shelby_cty



Part of the [Business Administration, Management, and Operations Commons](#), [Growth and Development Commons](#), and the [Infrastructure Commons](#)

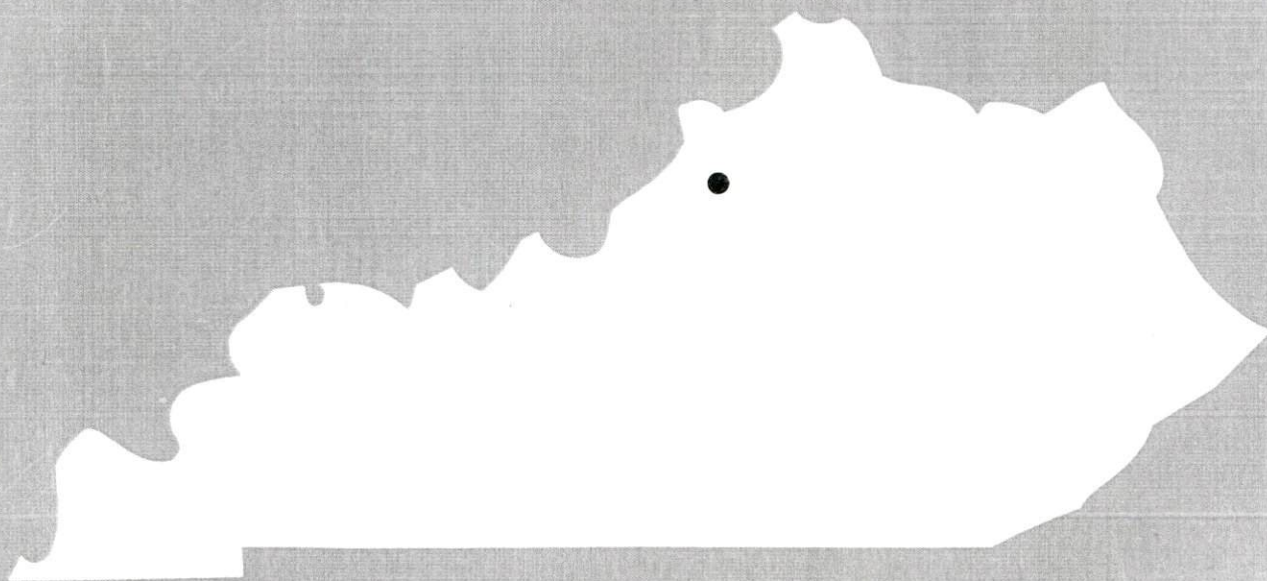
Recommended Citation

Kentucky Library Research Collections, "Industrial Resources: Shelby County - Shelbyville" (1984). *Shelby County*. Paper 8.
https://digitalcommons.wku.edu/shelby_cty/8

This Report is brought to you for free and open access by TopSCHOLAR®. It has been accepted for inclusion in Shelby County by an authorized administrator of TopSCHOLAR®. For more information, please contact topscholar@wku.edu.

1984

A comprehensive
report on
Shelbyville, Ky.

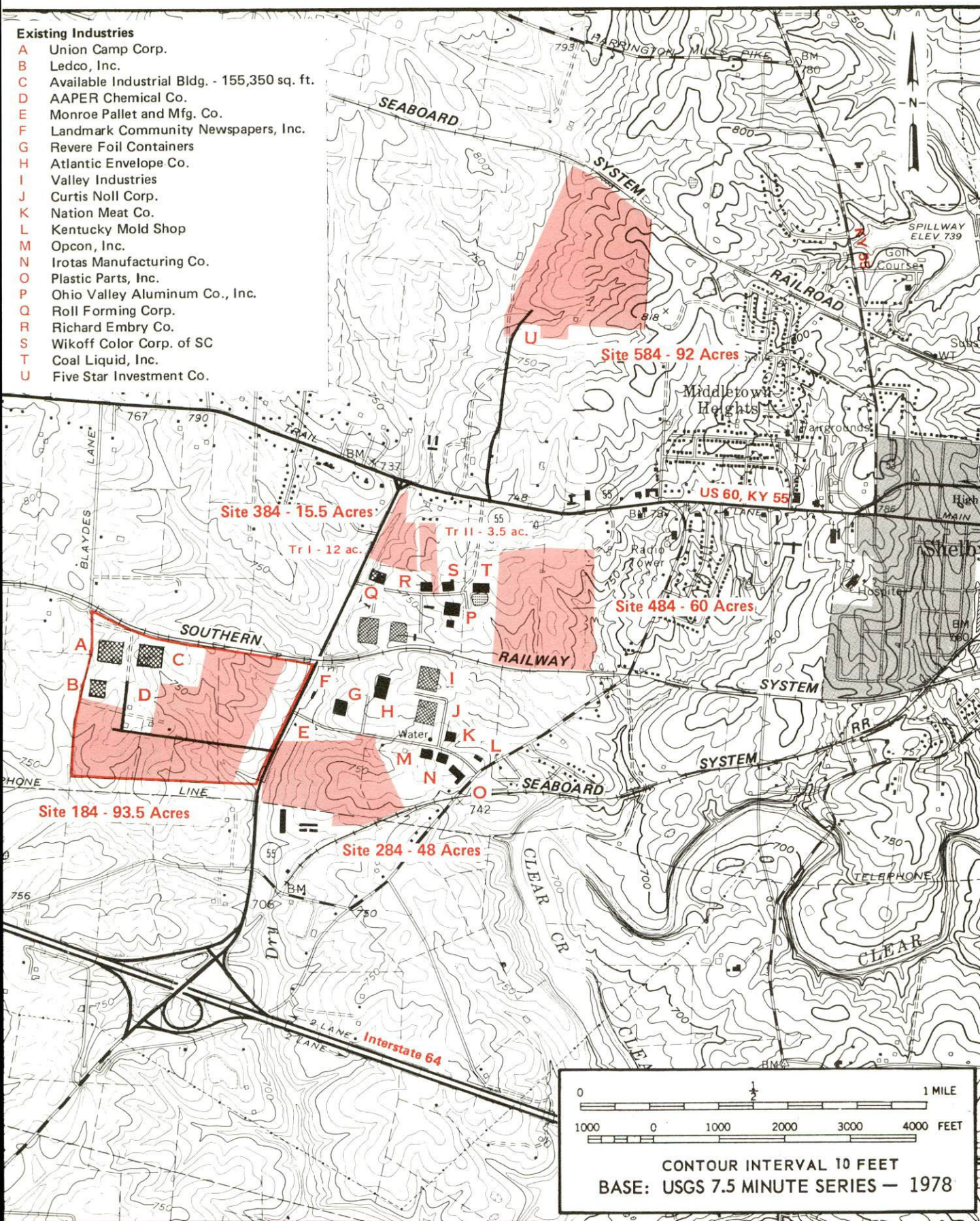


SHELBYVILLE, KENTUCKY --- Index to Industrial Sites --- 1984

For more information contact the Kentucky Department of Economic Development, Industrial Development & Marketing Division, Capital Plaza Tower, Frankfort, Kentucky 40601 (502-564-7140).

Existing Industries

- A Union Camp Corp.
- B Ledco, Inc.
- C Available Industrial Bldg. - 155,350 sq. ft.
- D AAPER Chemical Co.
- E Monroe Pallet and Mfg. Co.
- F Landmark Community Newspapers, Inc.
- G Revere Foil Containers
- H Atlantic Envelope Co.
- I Valley Industries
- J Curtis Noll Corp.
- K Nation Meat Co.
- L Kentucky Mold Shop
- M Opcon, Inc.
- N Irotas Manufacturing Co.
- O Plastic Parts, Inc.
- P Ohio Valley Aluminum Co., Inc.
- Q Roll Forming Corp.
- R Richard Embry Co.
- S Wikoff Color Corp. of SC
- T Coal Liquid, Inc.
- U Five Star Investment Co.



A COMPREHENSIVE REPORT ON
SHELBYVILLE, KENTUCKY

Prepared by
The Kentucky Department of Economic Development
Division of Research and Planning
in cooperation with
The Shelby County Chamber of Commerce

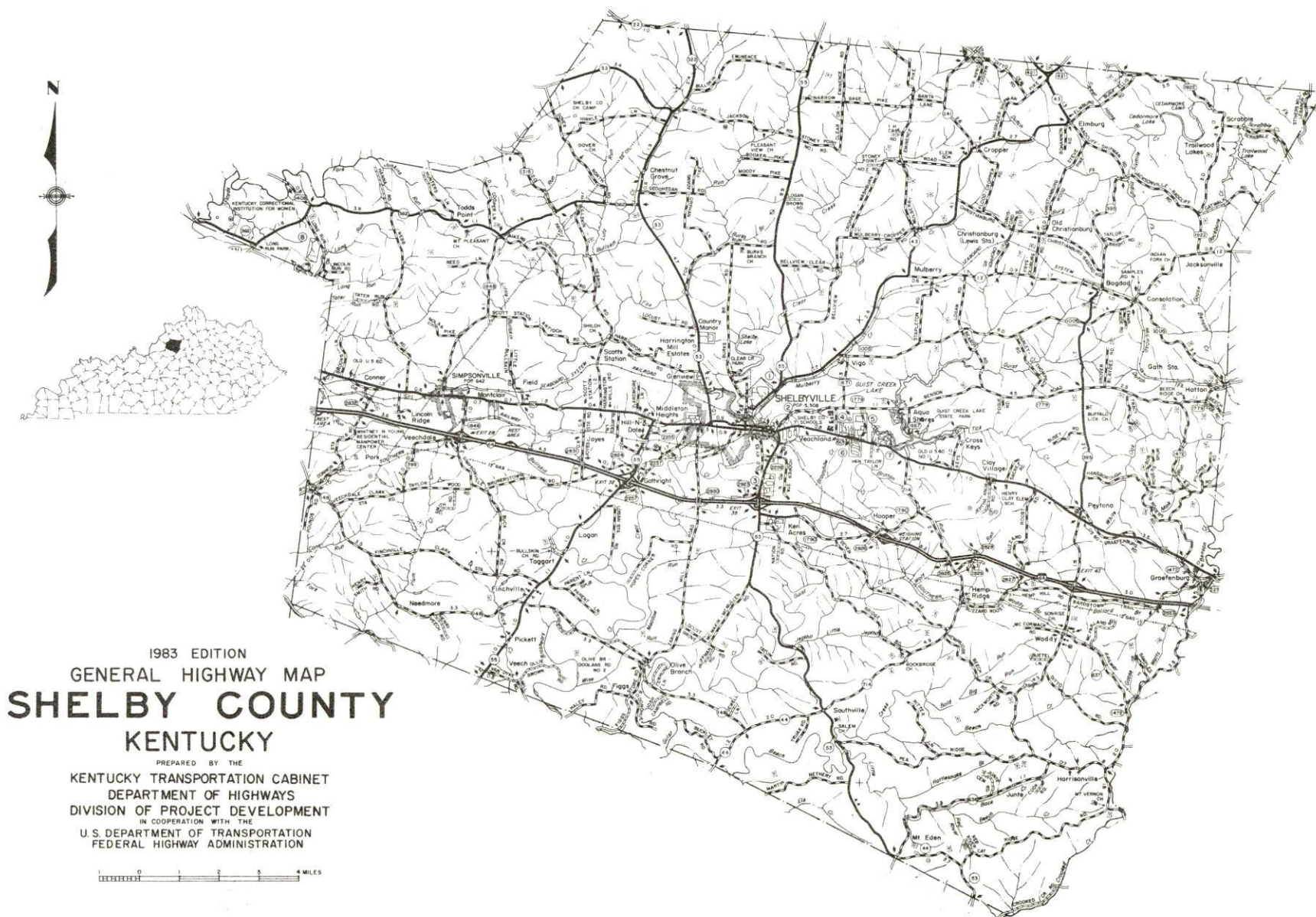
1984

Program manager - Pamela Riley; research - Andrew Dennis; clerical - Bobbi Medley; graphics - Frank Ferrante, Tony Cecconi, Robert Owens; cartography - Site Evaluation Branch, Division of Industrial Development. Cost of printing paid from state funds.

TABLE OF CONTENTS

<u>Chapter</u>	<u>Page</u>
INDUSTRIAL SITES	i
SHELBYVILLE, KENTUCKY - A RESOURCE PROFILE	1
THE LABOR MARKET AREA	3
Population	3
Labor Force Characteristics of Residents, 1982	3
Selected Components of Nonagricultural Employment, by Place of Work, 1982	4
Major Shelbyville Manufacturing Firms, Their Products and Employment	5
Labor Organizations in Manufacturing Firms	7
Industrial Services	7
Estimated Male Labor Supply	8
Estimated Female Labor Supply	9
Average Weekly Wages By Industry, by Place of Work, 1982	10
Per Capita Personal Income	12
TRANSPORTATION	13
Rail	13
Highways	13
Truck Service	14
Air	16
Bus	16
Taxi	16
Rental Services	16
Water	16
POWER AND FUEL	17
Electricity	17
Natural Gas	17
Other Fuels	18
WATER AND SEWERAGE	19
Public Water Supply	19
Raw Water	22
Sewerage	22
CLIMATE	23

<u>Chapter</u>	<u>Page</u>
LOCAL GOVERNMENT	24
City	24
County	24
Assessed Value of Property, 1983	24
Property Taxes	24
Combined State and Local Rates Per \$100 Valuation, 1983	25
Planning and Zoning	25
Safety	26
Police	26
Fire	26
Rescue Service	26
Refuse Collection and Disposal	26
EDUCATION	27
Public Schools	27
Area Colleges and Universities	28
Vocational Schools	29
HEALTH	31
Local Medical Personnel	31
Hospitals	31
Ambulance Service	31
Public Health	31
OTHER LOCAL FACILITIES	32
Communications	32
Library Services	32
Religious Institutions	33
Financial Institutions	33
Motels	34
Clubs and Organizations	34
RECREATION	35
COMMUNITY IMPROVEMENTS	38



[illegible]

SHELBYVILLE, KENTUCKY - A RESOURCE PROFILE

Shelbyville, the county seat of Shelby County and a "Kentucky Certified City" is located in central Kentucky's famous Blue Grass Region. Shelbyville's location places it only 31 miles east of Louisville, Kentucky; 50 miles northwest of Lexington, Kentucky; 120 miles southwest of Cincinnati, Ohio; and 199 miles northeast of Nashville, Tennessee. Shelbyville had a 1980 population of 5,329.

Shelby County covers a total land area of 385 square miles and had a 1980 population of 23,328.

The Economic Framework

The total number of Shelby County residents employed in 1982 averaged 10,330 with 8,945 persons employed in nonagricultural jobs. Manufacturing employers in the county reported 1,655 workers; wholesale and retail trade 1,360; service occupations 900; and state and local government 670. Manufacturing employment is greatest in the fabricated metal products, paper and allied products, and food and kindred products industries.

Per capita personal income in Shelby County in 1981 was \$8,519. Between 1977 and 1981, per capita income increased by 42 percent.

The Shelbyville labor market area includes Shelby and the six adjoining counties. The total number of residents of the labor market area employed in 1982 averaged 343,630 with 337,970 employed in nonagricultural jobs. Manufacturing employers in the area provided 81,660 jobs; wholesale and retail trade 80,900; service occupations 64,740; and state and local government 46,240.

Resources for Growth

1. Labor Supply - There is a current estimated labor supply of 38,490 men and 38,120 women available for industrial jobs in the labor market area. In addition, from 1984 through 1988, 31,810 young men and 30,260 young women in the area will become 18 years of age and potentially available for industrial jobs.

2. Transportation - Local transportation capability is excellent. Shelbyville is served by both the Seaboard System Railroad and Southern Railway System. Two interchanges of Interstate 64, a major east-west highway, are located within four miles of downtown Shelbyville. Shelbyville is also served directly by U.S. Highway 60/460. Twenty-four common carriers have authority to serve Shelbyville with interstate and/or intrastate truck service. The nearest scheduled commercial airline service is available at Standiford Field in Louisville, 31 miles west of Shelbyville.

3. Power and Fuel - Electric power is supplied to Shelbyville and portions of Shelby County by Kentucky Utilities Company, an electric generation and transmission company. The major portion of Shelby County is served by the Shelby Rural Electric Cooperative Corporation which is supplied by East Kentucky Power Cooperative. Natural gas service is provided by Western Kentucky Gas Company, which is supplied by Texas Gas Resources Corporation. There are three propane distributors and six fuel oil distributors in Shelbyville.

4. Education - The Shelby County School System serves over 4,500 students and is accredited by the Southern Association of Colleges and Schools.

There are twelve institutions of higher learning within 50 miles of Shelbyville, including six universities, two senior colleges, and four junior colleges.

The Shelby County Area Vocational Education Center offers vocational training in nine courses. The Jefferson State Vocational-Technical School in Louisville, 31 miles distant, offers 28 courses.

THE LABOR MARKET AREA

The Shelbyville Labor Market Area includes Shelby County and the adjoining Kentucky counties of Anderson, Franklin, Henry, Jefferson, Oldham, and Spencer.

POPULATION			
<u>Area</u>	<u>1980</u>	<u>1970</u>	<u>Percent Nonwhite</u>
Shelbyville	5,329	4,182	25.7
Labor Market Area	808,754	788,978	N/A
Shelby County	23,328	18,999	11.4
Anderson County	12,567	9,358	3.9
Franklin County	41,830	34,481	8.7
Henry County	12,740	10,910	5.5
Jefferson County	684,565	695,055	16.9
Oldham County	27,795	14,687	5.5
Spencer County	5,929	5,488	2.7

Note: The 1980 counts of population by race are provisional.

Source: U.S. Department of Commerce, Bureau of the Census, 1980 Census of Population and Housing, March 1981; 1980 Census of Population, Number of Inhabitants. Population Research Unit, Urban Studies Center, University of Louisville, Kentucky Demographics: The 1980 Census of Kentucky, Characteristics of Population, Households, Housing, January 1982.

LABOR FORCE CHARACTERISTICS OF RESIDENTS, 1982		
	<u>Shelby County</u>	<u>Labor Market Area</u>
Civilian Labor Force	11,219	385,912
Employment	10,329	343,628
Agricultural	1,384	5,657
Nonagricultural	8,945	337,971
Unemployment	890	42,284
Rate of Unemployment (%)	7.9	11.0

Source: Kentucky Cabinet for Human Resources, Kentucky Labor Force Estimates, Annual Averages, 1982.

SELECTED COMPONENTS OF NONAGRICULTURAL EMPLOYMENT,
BY PLACE OF WORK, 1982

	<u>Shelby County</u>	<u>Labor Market Area</u>
All Industries (total)	5,205	329,633
Manufacturing	1,655	81,662
Wholesale & Retail Trade	1,356	80,897
Services	902	64,737
State/Local Government	674	46,243
Contract Construction	118	14,324

Note: Excludes domestic workers, railway workers, certain nonprofit corporations, majority of federal government workers, and self-employed workers.

Source: Kentucky Cabinet for Human Resources, Average Monthly Workers Covered by Kentucky Unemployment Insurance Law, 1982.

MAJOR SHELBY COUNTY MANUFACTURING FIRMS,
THEIR PRODUCTS AND EMPLOYMENT*

<u>Firm</u> (Establishment date)	<u>Product</u>	<u>Employment</u>			<u>Labor Unions</u>
		<u>Total</u>	<u>Male</u>	<u>Female</u>	
<u>Shelbyville</u>					
AAPER Alcohol and Chemical Company (1980)	Ethyl alcohol	38	--	--	
American Emblem Tool Company (1977)	Saw blades--steel, carbide, and saber	58	33	25	
Atlantic Envelope Company (1972)	Envelopes	88	34	54	
Coca-Cola Bottling Company (1920)	Soft drinks	40	35	5	
Electrical Circuits, Inc. (1981)	Electrical harness assemblies	60	12	48	
Irotas Manufacturing Company (1977)	Rotogravure cylinders, flexographic cylinders, conveyor rolls	53	50	3	
Landmark Community Newspapers, Inc. (1968)	Newspapers, commercial printing	65	29	36	
Ledco, Inc. (1979)	Wood doors, trim and molding, metal doors	56	47	9	
Lee-McClain Company, Inc. (1933)	Men's suits, sport coats, men's slacks	100	25	75	
Long Silo Company (1965)	Concrete staves and farm silos	42	40	2	
Ohio Valley Aluminum Company, Inc. (1960)	Aluminum extrusion billets fabrication, aluminum reclaimed scrap ingot, aluminum deox products	63	60	3	

(Cont'd)

<u>Firm</u> (Establishment date)	<u>Product</u>	<u>Employment</u>			<u>Labor Unions</u>
		<u>Total</u>	<u>Male</u>	<u>Female</u>	
<u>Shelbyville</u> (Contd.)					
Plastic Parts, Inc. (1969)	Plastics fabricators, structural foam, plastics molds	45	25	20	
Revere Foil Containers (1967)	Aluminum foil containers	44	23	21	Aluminum Workers**
Roll Forming Corporation (1947)	Custom roll formed products, metal painting	157	120	37	
Shelby Industries (1982)	Winches, couplers	60	42	18	
Southwestern Tobacco Company, Inc. (1925)	Tobacco prizing, hogsheads repairing	50	47	3	
Union Camp Corporation (1980)	High density polyethylene merchandise bags	114	63	51	
<u>Simpsonville</u>					
Leggett & Platt, Inc. (1959)	Swivel chair and sofa bed mechanisms, recliner chair mechanisms	400	175	225	Machinists**
F. B. Purnell Sausage Company, Inc. (1955)	Sausage products	149	126	23	

* Firms employing 30 or more.

** See Labor Organizations below.

Sources: Kentucky Department of Economic Development, 1984 Kentucky Directory of Manufacturers; Division of Research and Planning.

LABOR ORGANIZATIONS IN MANUFACTURING FIRMS

<u>Union</u>	<u>Representing workers at:</u>
Aluminum, Brick and Glass Workers International Union, AFL-CIO	Revere Foil Containers
International Association of Machinists and Aerospace Workers, AFL-CIO	Leggett & Platt, Inc.

INDUSTRIAL SERVICES

<u>Types of Services</u>	<u>Location</u>	<u>Mileage from Shelbyville</u>
Custom Plastics Producers	Shelbyville	--
Electric Motor Repair	Louisville	31
Grinding, Precision & Tool	Louisville	31
Heat Treating Facilities	Frankfort Louisville	21 31
Industrial Equipment & Supplies	Frankfort Louisville	21 31
Industrial Gases	Louisville	31
Industrial Waste Removal	Frankfort Buckner Louisville	21 24 31
Machine Shops, Tool & Die	Frankfort Lawrenceburg Louisville	21 24 31
Metal Finishers	Jeffersontown Louisville	19 31
Metal Service Centers	Louisville	31
Millwrights	Louisville	31

Source: Kentucky Department of Economic Development, Kentucky Directory of Selected Industrial Services, 1983.

ESTIMATED MALE LABOR SUPPLY
SHELBYVILLE LABOR MARKET AREA

Area	Current			Future	
	Total	Unemployed	Under-employed	Not in Labor Force	Becoming 18 years of age 1984 thru 1988
Labor Market					
Area*	38,487	24,721	12,836	930	31,811
Shelby	904	519	385	0	944
Anderson	514	305	139	70	553
Franklin	2,173	913	771	489	1,733
Henry	756	382	197	177	517
Jefferson	32,573	21,946	10,541	86	26,369
Oldham	1,210	491	719	0	1,401
Spencer	357	165	84	108	294

*Additional workers may be drawn from other nearby counties.

Note: Unemployed - persons unemployed and actively seeking work;
Underemployed - persons employed but working only 14 to 26 weeks per year;
Not in Labor Force - represents the number of persons who would enter the labor force if suitable employment were available (based on the assumption that persons in Kentucky would like to participate in the labor force in the same proportion that they do nationally).

Sources: Kentucky Cabinet for Human Resources, Kentucky Labor Supply Estimates by Area Development District and County, 1982. Kentucky Department of Economic Development, Future Labor Supply Becoming 18 Years of Age, 1984 thru 1988.

ESTIMATED FEMALE LABOR SUPPLY
SHELBYVILLE LABOR MARKET AREA

Area	Current			Future	
	Total	Unemployed	Under-employed	Not in Labor Force	Becoming 18 years of age 1984 thru 1988
Labor Market					
Area*	38,123	17,563	18,138	2,422	30,262
Shelby	994	371	481	142	935
Anderson	522	268	221	33	500
Franklin	1,512	560	952	0	1,482
Henry	871	265	224	382	536
Jefferson	32,445	15,489	15,670	1,286	25,175
Oldham	1,320	487	538	295	1,374
Spencer	459	123	52	284	260

*Additional workers may be drawn from other nearby counties.

Note: Unemployed - persons unemployed and actively seeking work;
Underemployed - persons employed but working only 14 to 26 weeks per year;
Not in Labor Force - represents the number of persons who would enter the labor force if suitable employment were available (based on the assumption that persons in Kentucky would like to participate in the labor force in the same proportion that they do nationally).

Sources: Kentucky Cabinet for Human Resources, Kentucky Labor Supply Estimates by Area Development District and County, 1982. Kentucky Department of Economic Development, Future Labor Supply Becoming 18 Years of Age, 1984 thru 1988.

AVERAGE WEEKLY WAGES BY INDUSTRY,
BY PLACE OF WORK, 1982

	<u>Shelby County</u>	<u>Anderson County</u>	<u>Franklin County</u>	<u>Henry County</u>
All Industries	\$232.33	\$261.36	\$289.17	\$213.29
Mining & Quarrying	.00	*	*	.00
Contract Construction	181.50	215.50	373.49	161.31
Manufacturing	276.01	322.56	324.34	272.42
Transportation, Communications & Public Utilities	342.48	395.22	375.29	260.59
Wholesale & Retail Trade	185.46	204.91	170.28	140.96
Finance, Insurance & Real Estate	258.23	235.23	302.96	273.52
Services	186.23	148.32	212.29	161.29
State/Local Government	256.18	233.45	311.86	239.98
Other	221.80	119.19	202.73	118.88
	<u>Jefferson County</u>	<u>Oldham County</u>	<u>Spencer County</u>	
All Industries	\$322.96	\$249.85	\$216.59	
Mining & Quarrying	429.11	257.79	*	
Contract Construction	381.94	288.18	*	
Manufacturing	436.92	317.77	*	
Transportation, Communications & Public Utilities	423.18	250.22	233.94	
Wholesale & Retail Trade	238.42	193.06	146.67	
Finance, Insurance & Real Estate	327.53	238.97	*	
Services	253.39	186.24	215.52	
State/Local Government	309.11	283.78	220.08	
Other	200.57	196.31	132.96	

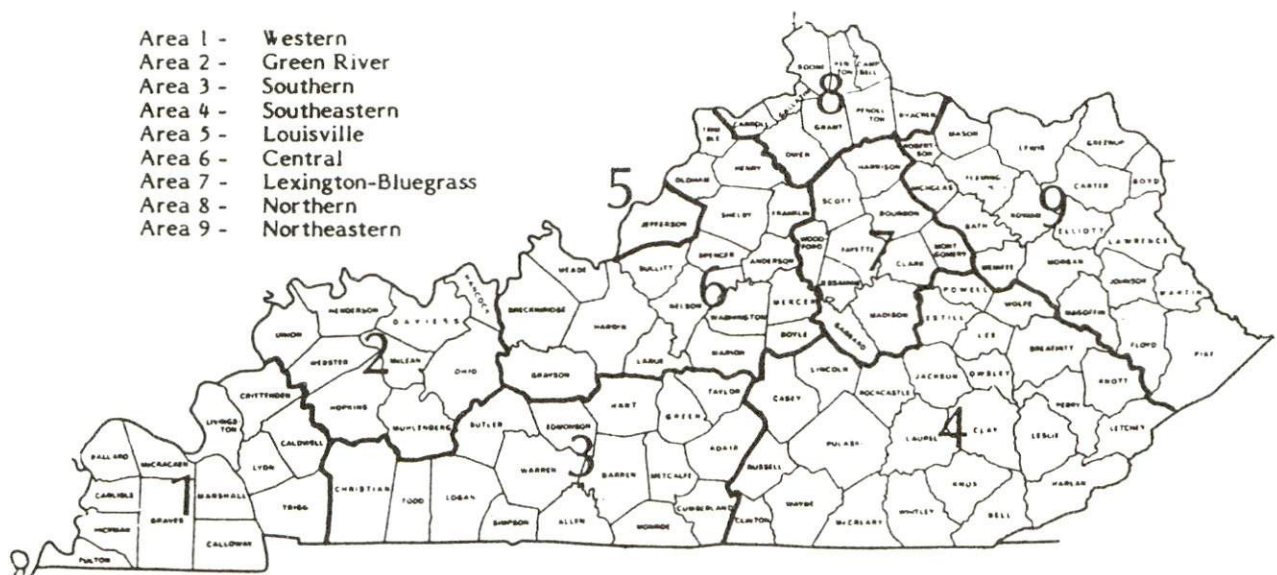
* Not disclosed.

Note: Excludes domestic workers, railway workers, certain nonprofit corporations, majority of federal government workers, and self-employed workers.

Source: Kentucky Cabinet for Human Resources, Average Weekly Wages of Workers Covered by Kentucky Unemployment Insurance Law, 1982.

Occupational wage rates for specific industries are usually not available to most government agencies, and wage data furnished to state employment agencies by individual industrial employers are protected from disclosure by federal law. The most reliable up-to-date wage information can be obtained by direct contact with local employers.

Associated Industries of Kentucky, a voluntary organization of Kentucky businesses, regularly collects occupational wage rates and fringe benefits data from participating member firms. Data are compiled for over 127 clearly defined office, production, and service occupations. Tabulations are published for nine geographical areas of Kentucky, as shown on the map below. It should be noted that the data may be weighted by the preponderance of firms in the larger cities and may be somewhat higher than the rates paid in the smaller communities. Data from these tabulations are available, upon request, from the Kentucky Department of Economic Development, Frankfort, Kentucky 40601.



Associated Industries of Kentucky Area Wage Surveys

PER CAPITA PERSONAL INCOME

<u>Area</u>	<u>1977</u>	<u>1981</u>	<u>Percent Change</u>
Shelby County	\$ 5,989	\$ 8,519	42.2
Labor Market Area Range	\$5,257 - 7,331	\$7,817 - 10,760	N/A
Kentucky	5,797	8,416	45.2
U.S.	6,984	10,495	50.3

Source: U.S. Bureau of Economic Analysis, Kentucky Economic Information System, May 1983.

TRANSPORTATION

Rail

Line serving **Shelbyville** - Seaboard System Railroad

Services - Main line; local freight works Shelbyville Monday through Friday; one northbound and one southbound through freights daily; switching services; team track space for five cars; siding space for 15 cars; nearest piggyback facilities are in Louisville, 31 miles west of Shelbyville

Line serving **Shelbyville** - Southern Railway System

Services - Six eastbound and six westbound scheduled through freights daily; daily freight stops made on demand; switching facilities; team track space for 22 cars; piggyback facilities available in Louisville, 31 miles west of Shelbyville

For details on routing, schedules, rates, and services, contact:

Manager of Industrial Development
Seaboard System Railroad
P. O. Box 32290
Louisville, Kentucky 40232
(502) 587-5228

and/or

District Sales Manager
Norfolk Southern Corporation
1402 South 15th Street
Louisville, Kentucky 40210
(502) 636-6023

Highways

Interstate 64, a major east-west route, serves Shelbyville with two interchanges. An interchange of Interstate 64 is located three miles southeast of downtown Shelbyville via Kentucky Highway 53. Another interchange is located four miles southwest of the downtown area via Kentucky Highway 55.

Interstate 64 provides direct access from Shelbyville to Louisville, 31 miles to the west, where it connects with Interstates 65 and 71. Interstate 64 also provides direct access to Lexington, 50 miles east of Shelbyville, where it connects with Interstate 75.

Other major highways serving Shelbyville are U.S. 60 and 460 plus Kentucky Highways 53 and 55, all "AAA" rated (80,000-pound gross load limit) trucking highways in the Shelbyville area.

Truck Service

<u>Company</u>	<u>Home Office</u>
A & H Truck Line, Inc.*	Evansville, Indiana 47711
ANR Freight System, Inc.*	One Woodward Avenue Detroit, Michigan 48226
Bestway Express, Inc.**	Nashville, Tennessee 37210
Central Transport, Inc.**	34200 Mound Road Sterling Heights, Michigan 48077
Claxon Truck Line, Inc.*	P.O. Box 678 Frankfort, Kentucky 40602
Commercial Motor Freight, Inc. of Indiana*	Indianapolis, Indiana 46241
Expressway, Inc.*	Louisville, Kentucky 40210
IML Freight, Inc.*	P.O. Box 30277 Salt Lake City, Utah 84130
Leaseway Express*	4370 Malsbary Road Cincinnati, Ohio 45242
Louisville-Shelbyville Express, Inc.*	3509 Bashford Avenue Louisville, Kentucky 40218
The Mason and Dixon Lines, Inc.**	P. O. Box 969 Kingsport, Tennessee 37662
The Maryland Transportation Company**	1111 Frankfurst Avenue Baltimore, Maryland 21225
McLean Trucking Company**	P. O. Box 213 Winston-Salem, North Carolina 27154
Middlewest Freightways, Inc.*	6810 Prescott Avenue St. Louis, Missouri 63147
The O. K. Trucking Company*	3000 East Crescentville Road Cincinnati, Ohio 45241
Overnite Transportation Company*	1000 Semmes Avenue P. O. Box 1216 Richmond, Virginia 23209
R-W Service System, Inc.*	20225 Gooddard Drive Taylor, Michigan 48180
Russell Transfer, Inc.*	5259 Aviation Drive Northwest Roanoke, Virginia 24012
Smith's Transfer Corporation**	P. O. Box 1000 Staunton, Virginia 24401
J. Fred Smith Trucking Company***	West Fackler Street Danville, Kentucky 40422
Suburban Motor Freight, Inc.*	P.O. Box 1739 Columbus, Ohio 43216

<u>Company</u>	<u>Home Office</u>
Thurston Motor Lines, Inc.*	600 Johnston Road Charlotte, North Carolina 28206
Transcon Lines*	101 Continental Boulevard El Segundo, California 90245
United Trucking Service, Inc.*	8505 West Warren Avenue Dearborn, Michigan 48126

- * Interstate and intrastate service.
 ** Interstate service only.
 *** Intrastate service only.

Sources: American Motor Carrier Directory, Fall 1983. Kentucky Department of Economic Development, Division of Research and Planning.

<u>Other Freight Services</u>	<u>Nearest Office or Shipping Center</u>
Emery	Louisville, 31 miles west
Federal Express	Louisville, 31 miles west
Purolator Courier Corporation	Louisville, 31 miles west
United Parcel Service	Louisville, 31 miles west

HIGHWAY MILES AND TRUCK TRANSIT TIME IN DAYS FROM
SHELBYVILLE, KENTUCKY, TO SELECTED MARKET CENTERS

<u>City</u>	<u>Highway Miles</u>	<u>Delivery Time TL</u>	<u>City</u>	<u>Highway Miles</u>	<u>Delivery Time TL</u>
Atlanta, Ga.	412	1 & 2	Los Angeles, Ca.	2,139	4
Baltimore, Md.	591	2	Louisville, Ky.	31	1
Birmingham, Ala.	395	1	Nashville, Tenn.	199	1
Chicago, Ill.	323	1	New Orleans, La.	716	2
Cincinnati, Ohio	120	1	New York, N.Y.	753	-
Cleveland, Ohio	364	1	Pittsburgh, Pa.	393	1
Detroit, Mich.	379	1	St. Louis, Mo.	294	1
Knoxville, Tenn.	219	1			

Note: Mileage computations are via the best interstate or primary highways, not necessarily the most direct route of travel.

Sources: Rand McNally Road Atlas, 1979. Official Kentucky Mileage Map, 1980.
 Delivery time - Overnite Transportation Company, P.O. Box 1216, Richmond, Virginia 23209.

Air

Nearest Scheduled Commercial Airline Service

	Standiford Field
Location:	5 miles southeast of center of Louisville, Kentucky; 36 miles west of Shelbyville
Runways:	3 paved
Length:	7,800 feet; 7,250 feet; 5,000 feet
Traffic	
Control:	Control tower
Lighting:	Runways, obstructions, beacon and approach and touchdown lights, center line on one runway
Services:	Delta, Eastern, Ozark, Piedmont, TWA, United, USAir, Wright Airways, Allegheny Commuter, Comair, and Florida Express; fuel - 100 and jet-A; tie downs; major A & P repairs; major Avionics repairs; APU, charter, oxygen, U. S. Customs; taxi, car rentals, limousine, courtesy car, public transit; weather information; restaurant, snack bar
Air Freight Service:	Air freight terminal

Bus - Southern Greyhound Bus Lines

Taxi - 7:30 a.m. - 9:00 p.m., radio-dispatched service

Rental Services - Car, trailer and truck rentals

Water

Shelbyville is located 31 miles east of Louisville, where port facilities are available on the Ohio River. The Louisville and Jefferson County Riverport Authority has been designated as a Foreign Trade Zone and offers complete U.S. Customs services for exports and imports.

The Port of Louisville is also available for public use.

POWER AND FUEL

Electricity

Company serving **Shelbyville** and parts of **Shelby County** - Kentucky Utilities Company

Source of power - Kentucky Utilities Company

Total generating capacity - 2,639,100 KW*

For industrial rates contact:

Industrial Development Department
Kentucky Utilities Company
One Quality Street
Lexington, Kentucky 40507
(606) 255-1461

Company serving a major portion of **Shelby County** - Shelby Rural Electric Cooperative Corporation

Source of power - East Kentucky Power Cooperative

Total generating capacity - 1,304,000 KW**

For industrial rates contact:

Industrial Development Division
East Kentucky Power Cooperative
P. O. Box 707
Winchester, Kentucky 40391
(606) 744-4812

Small portions of Shelby County are served by: Louisville Gas & Electric Company, Fox Creek RECC, Frankfort Electric & Water Plant Board, and Salt River RECC.

Natural Gas

Company serving **Shelbyville** - Western Kentucky Gas Company

Source of supply - Texas Gas Resources Corporation

Size of transmission mains - Two 26-inch lines (supplier);

8- and 4-inch (distributor)

Distribution mains - 6, 4 and 2 inches

Distribution pressure - 4 ounces to 60 psi

Btu content - 1,000 per cubic foot

Specific gravity - 0.60

For rates and supplies contact:

Western Kentucky Gas Company
326 Main Street
Shelbyville, Kentucky 40065
(502) 633-2824

* A new generating unit is under construction in Carroll County. Due to be completed in 1984, the unit will have a generating capacity of 511,000 KW.

** East Kentucky Power Cooperative's total generating capacity will be increased when a new 600,000 KW coal-fired generation plant is completed in southeast Clark County in 1992.

Other Fuels

Propane

Big 3 Gas Company of
Shelby County*
U.S. 60 West
Shelbyville, Kentucky 40065

Silgas, Inc.*
Old Finchville Road
Shelbyville, Kentucky 40065

Hands Gas Company, Inc.*
Ardmore Lane
Shelbyville, Kentucky 40065

Fuel oils

Distillate fuel oil -

Crume-Hundley Oil
Company, Inc.*
801 South Third
Shelbyville, Kentucky 40065

Southern States Shelbyville
Cooperative, Inc.*
Seventh and Bradshaw
Shelbyville, Kentucky 40065

Gray Oil Company*
P. O. Box 81
U.S. 60 East
Shelbyville, Kentucky 40065

W.P.B. Oil Company, Inc.*
First and Goodman Avenue
P. O. Box 157
Shelbyville, Kentucky 40065

Jones & Wright Marathon*
415 Second Street
Shelbyville, Kentucky 40065

Chevron U.S.A.*
Tom Wathen Distributor, Inc.
North Seventh Street
P. O. Box 386
Shelbyville, Kentucky 40065

Residual fuel oil - Arrangements must be made with the refinery.

Low sulphur content coal - Available in Kentucky.

* Bulk plant.

WATER AND SEWERAGE

Public Water Supply

Company serving **Shelbyville** - Shelbyville Municipal Water & Sewer
Commission
1040 Main Street
P.O. Box 117
Shelbyville, Kentucky 40065
(502) 633-2840

Source - Guist Creek Lake

Treatment plant capacity - 3,000,000 gallons per day*

Average daily consumption - 2,200,000 gallons

Peak daily consumption - 3,000,000 gallons

Type treatment - Flocculation, coagulation, sedimentation, filtration,
aeration, fluoridation, chlorination

Storage capacity - 1,640,000 gallons including clear wells

Size lines - 16, 14, 12, 10, 8, 6, 4 and 2 inches

Average pressure - 65 psi

Average temperature - 36 degrees F. (winter) to 72 degrees F. (summer)

MONTHLY WATER RATES

First	1,000 gallons	\$ 3.75 (Minimum)
Next	9,000 gallons	1.60 per M gallons
Next	15,000 gallons	1.50 per M gallons
Next	25,000 gallons	1.40 per M gallons
Next	50,000 gallons	1.30 per M gallons
All over	100,000 gallons	1.20 per M gallons

Minimum Monthly Charge (for 1,000 gallons or less)

5/8- or 3/4-inch meter	\$ 3.75
1-inch meter	4.50
1 1/4- or 1 1/2-inch meter	5.25
2-inch meter	7.25
3-inch meter	13.00
4-inch meter	20.00
6-inch meter	35.00

(Contd.)

* Plans have been developed to expand the water treatment plant to 4.6 million gallons per day.

An area outside the corporate limits of Shelbyville which extends south and east of the city is subject to the following special rates:

First	1,000 gallons	\$ 5.38 (Minimum)
Next	9,000 gallons	2.15 per M gallons
Next	15,000 gallons	1.72 per M gallons
Next	25,000 gallons	1.51 per M gallons
Next	50,000 gallons	1.40 per M gallons
All over	100,000 gallons	1.25 per M gallons

Minimum Monthly Charge (for 1,000 gallons or less)

5/8- or 3/4-inch meter	\$ 5.38
1-inch meter	6.31
1 1/4- or 1 1/2-inch meter	7.84
2-inch meter	10.77

Tap-on charge:

5/8-inch meter - \$250*

1-inch meter - \$350*

Larger meter - Based on cost of materials, labor and installation

*Additional charges will be assessed for installations requiring more than 60 feet of line and for rock removal expenses.

Name of water district - West Shelby Water District
P.O. Box 26
Simpsonville, Kentucky 40067
(502) 722-8944

Area served - Simpsonville and western Shelby County

Date when water district began operating - 1967

Source of supply of treated water - Shelbyville Municipal Water & Sewer Commission

Average amount of water used in a 24-hour period - 270,000 gallons

Peak amount of water used in a 24-hour period - 514,000 gallons

Storage capacity - 200,000 gallons

Average pressure - 65 psi

Average temperature - 60 degrees F

Size lines - 8, 6, 4, 3, 2 and 1-inch

MONTHLY WATER RATES

First	2,500 gallons	\$ 9.25 Minimum
Next	7,500 gallons	3.20 per M gallons
Next	20,000 gallons	2.70 per M gallons
Next	200,000 gallons	2.30 per M gallons
Over	230,000 gallons	2.00 per M gallons

Minimum Monthly Charge

5/8-inch x	3/4-inch meter	First	2,500 gallons	\$ 9.25
	3/4-inch meter	First	3,500 gallons	12.45
	1-inch meter	First	5,000 gallons	17.25
1 1/2-inch meter	First	10,000 gallons	33.25	
	2-inch meter	First	16,000 gallons	49.45
	3-inch meter	First	30,000 gallons	87.25
	4-inch meter	First	50,000 gallons	133.25
	6-inch meter	First	100,000 gallons	248.25

Tap-on charges:

5/8-inch meter	\$ 300
3/4-inch meter	320
1-inch meter	390
1 1/2-inch meter	510
2-inch meter	620
3-inch meter	1,000
4-inch meter or larger	Actual cost

Raw Water

Surface water sources - Brashears Creek, Clear Creek and Guist Creek

Discharge - Brashears Creek at Taylorsville, Kentucky: extremes for July to

September 1981 - maximum discharge 621 cfs, minimum discharge 0.14 cfs

Expected ground water yield - 5 gpm or less over the entire county

Sewerage

Company serving **Shelbyville** - Shelbyville Municipal Water & Sewer
Commission*

1040 Main Street

P.O. Box 117

Shelbyville, Kentucky 40065

(502) 633-2840

Design capacity - 1,300,000 gallons per day

Average daily flow - 500,000 gallons

Type of treatment - Primary and secondary

Treatment processes - Anaerobic digester, settling basins, primary and
secondary clarifiers, trickling filter and drying beds

Treated effluent discharged into - Clear Creek

Size of sanitary mains - 6, 8, 10, 12, 15 and 21 inches

Size of storm mains - 12, 15, 18 and 24 inches

Monthly Rates (based on water usage):

First	1,000 gallons	\$4.50 Minimum
Next	9,000 gallons	1.80 per M gallons
Next	15,000 gallons	1.65 per M gallons
Next	25,000 gallons	1.55 per M gallons
Next	50,000 gallons	1.45 per M gallons
Over	100,000 gallons	1.35 per M gallons

Surcharge for excessive strength sewage:

BOD in excess of 250 milligrams per liter	\$ 0.121 per pound
Suspended solids in excess of 250 milligrams per liter	0.121 per pound
Ammonia nitrogen in excess of 250 milligrams per liter	0.483 per pound

Tap-on charge:

Actual cost of labor and materials
\$50 inspection fee

* Shelbyville Municipal Water and Sewer Commission is in the process of upgrading the sewage treatment plant. Additions to the plant are to include rotating biological contactors, chlorine contact basin, additional drying beds and a second secondary clarifier. A major aspect of the project is to decrease the large amount of infiltration/inflow into the system during wet weather. The project is scheduled for completion in the fall of 1984.

CLIMATE

Shelby County

Temperature

Normal (30-year record)	55.20 degrees
Average annual 1982	55.50 degrees
Record highest, September 1954 (38-year record)	103.00 degrees
Record lowest, January 1963 (38-year record)	-21.00 degrees
Normal heating degree days (30-year record)	4,729
(Heating degree day totals are the sums of negative departures of average daily temperatures from 65 degrees F.)	

Precipitation

Normal (30-year record)	44.49 inches
Mean annual snowfall (39-year record)	16.40 inches
Total precipitation 1982	38.76 inches
Mean number days precipitation (.01 inch or more) (38-year record)	131
Mean number days thunderstorms (38-year record)	46

Prevailing Winds (17-year record)

South

Relative Humidity

1 a.m.	77 percent (18-year record)
7 a.m.	81 percent (19-year record)
1 p.m.	60 percent (19-year record)
7 p.m.	64 percent (19-year record)

Source: U.S. Department of Commerce, Environmental Science Services Administration, Climatological Data, 1982. Station of record: Lexington, Kentucky.

LOCAL GOVERNMENT

City

Structure - Mayor - 4-year term; 6 council members - 2-year terms

Budget 1983-84 - General Fund \$ 700,900

Water and Sewer Fund 800,000 (estimated expenditures)

Fees and licenses - Occupational license tax for businesses - 1/10 of one percent on all gross receipts of \$100,000 or less and 1/20 of one percent on all gross receipts over \$100,000 (minimum tax - \$50; maximum tax - \$750); motor vehicle license fees range from \$10 to \$40 per year

County

Structure - County Judge/Executive - 4-year term; 7 magistrates - 4-year terms

Budget 1983-84 - General Fund \$714,980; Road Fund \$522,917

Assessed Value of Property, 1983*

<u>Classes of Property</u>	<u>Shelbyville</u>	<u>Shelby County</u>
Real Estate	\$68,391,017	\$360,956,027
Tangibles	18,611,685	74,417,643

Property Taxes

All property in Kentucky is assessed at 100 percent of fair cash value.

Land and buildings are taxed by the state and may be taxed by local jurisdictions. The state rate is \$0.221 per \$100 of assessed valuation.

Manufacturing machinery, raw materials inventories, pollution control equipment, and goods in the process of manufacture are not subject to local taxation. The state rate is \$0.15 per \$100.

Other tangible personal property owned by manufacturers (automobiles, trucks, finished goods, office furniture, office equipment) is taxed by the state at \$0.45 per \$100 and may be taxed by local jurisdictions.

Intangible personal property located in Kentucky (money in hand, shares of stock, notes, bonds, accounts receivable, and other credits) is taxed by the state at \$0.25 per \$100, and is not subject to local taxation.

Property stored in public warehouses in a transit status is not subject to local taxation. The state rate is only \$0.015 per \$100.

Private leaseholds in industrial facilities owned by cities or counties and financed by industrial revenue bonds are subject to a state tax of \$0.015 per \$100 of value (essentially the lessee's equity, adjusted for appreciation or depreciation). Local taxation is not permitted.

* Excludes Homestead Exemptions.

Combined State and Local Rates Per \$100 Valuation, 1983*
(100% assessment)

	<u>Site Inside City of Shelbyville</u>	<u>Site Inside Unincorporated Shelby County</u>
1. Land and buildings	0.9928	0.649
2. Mfg. machinery, raw materials, goods in process, pollution control equipment	0.1500	0.150
3. Finished goods, office equipment, vehicles, other tangibles	1.3450	0.912
4. Intangibles (accounts receivable, notes, bonds, etc.)	0.2500	0.250
5. Property stored in public warehouses in a transit status	0.0150	0.015
6. Leaseholds in industrial revenue bond financed plants	0.0150	0.015

Planning and Zoning

Joint agency - Triple S Planning Commission**

Zoning enforced - County-wide

Subdivision regulations enforced - County-wide

Local codes enforced - Building codes county-wide

Mandatory state codes enforced - Kentucky Plumbing Code, National Electric Code, Kentucky Boiler Regulations and Standards, Kentucky Building Code (modeled after BOCA code)

* Kentucky Department of Economic Development.

** Includes Shelby County and cities of Shelbyville and Simpsonville.

Safety

Police

	Shelbyville	Shelby County
Total staff	11	5 (full time)
Radio-patrol cars	11	1 (part time) 5

Fire

Insurance Services Office,
Public Protection

Classification	6	*
Full-time staff	9	
Volunteers	14	

Rescue Service

Shelbyville-Shelby County Rescue Squad:

Number of volunteers - 32

Equipment - Two rescue trucks, two boats and motors, two Jaws of Life, scuba diving gear, resuscitators, 2-ton power pulls, first aid equipment, three generators

Personnel training - First aid, emergency rescue and fire fighting techniques, CPR

Refuse Collection and Disposal

Refuse collection in the Shelbyville area is handled by private firms; rates and services vary among companies. Trash pickup is provided twice per year by the City of Shelbyville. Refuse is disposed of at sanitary landfills.

* Six volunteer fire departments serve Shelby County. The Shelby County Suburban Fire Department serves the industrial park and has a current insurance classification of 8 and 9. A request has been made to lower the classification to 6. In 1984, the fire department will begin construction of a new substation to be located at the industrial park which is planned for completion during 1984.

EDUCATION

Public Schools

Shelby County*

Total Enrollment (Fall, 1983)	4,508
Elementary	1,984**
Middle School	1,156
High School	1,368
Student-Teacher Ratio	23-1
Elementary	22-1**
Middle School	26-1
High School	22-1
Accreditation	Southern Association of Colleges and Schools
Percent High School Graduates to College (1982)	48.5
Expenditures Per Pupil (1982-83)	\$ 1,601.37
Bonded Indebtedness (June 30, 1983)	\$3,668,000

* The Shelby County School System has acquired a 12-acre site in the Simpsonville area which will be used for a new elementary school tentatively scheduled for the late 1980's.

** Includes kindergarten.

Area Colleges and Universities

<u>Name</u>	<u>Location (Miles distant)</u>	<u>Enrollment (Fall, 1983)</u>	<u>Highest Degree Conferred</u>
Kentucky State University	Frankfort, Kentucky (21)	2,431	Masters
Bellarmino College	Louisville, Kentucky (31)	2,809	Masters
Jefferson Community College	Louisville, Kentucky (31)	7,076	Associate
Spalding University	Louisville, Kentucky (31)	1,115	Masters, Specialist
University of Louisville	Louisville, Kentucky (31)	19,750	Doctorate, M.D., D.M.D., J.D.
Midway College	Midway, Kentucky (34)	413	Associate
Indiana University, Southeast Campus	New Albany, Indiana (37)	4,671	Masters*
Georgetown College	Georgetown, Kentucky (42)	1,302	Masters
St. Catharine College	Springfield, Kentucky (49)	201	Associate
Lexington Technical Institute	Lexington, Kentucky (50)	2,532	Associate
Transylvania University	Lexington, Kentucky (50)	655	Baccalaureate**
University of Kentucky	Lexington, Kentucky (50)	22,055	Doctorate, M.D., D.M.D., J.D.

* Masters in education only.

** Courses in a masters degree program are taught on the Transylvania campus by faculty members of Xavier University of Cincinnati. The degree is issued by Xavier University.

Vocational Schools

Both the state vocational-technical schools and the area vocational education centers are operated by the Kentucky Department of Education. The state vocational-technical schools enroll persons full time who are at least 16 years of age and not in school. These students attend classes for six hours each day. The area vocational education centers are designed to accommodate high school students who are at least 15 years of age. These students attend vocational school for three hours each day. The state vocational-technical schools and the area education centers offer evening courses to enable working adults to upgrade current job skills.

<u>Nearest State School</u>	
Location	Jefferson State Vocational- Technical School
Miles Distant	Louisville 31
Curriculum	Agriculture Horticulture Business and Office Accounting/Jr. Management Clerical Data Processing Secretarial Word Processing Consumer and Home Economics Consumer and Family Life Skills Culinary Arts (Commercial Foods) Health and Personal Services Occupations Cosmetology Child Care Aide Dental Assistant Licensed Practical Nursing Medical Assistant Nurse's Aide Surgical Technician Ward Clerk Industrial Education Air Conditioning and Refrigeration Auto Body Repair Auto Mechanics Carpentry-Building Trades Diesel Mechanics Electricity Electronics Graphic Arts (Printing) Machine Shop Masonry Plumbing Welding Computer Literacy Learning Resource Center

Nearest Area Education Center

Location	Shelby County Area Vocational Education Center
Curriculum	Shelbyville Business and Office Accounting/Jr. Management Clerical Secretarial Word Processing Industrial Education Auto Mechanics Carpentry-Building Trades Electricity Machine Shop Welding

Arrangements can be made to provide training in the specific production skills required by an industrial plant. Instruction may be conducted either in the vocational school or in the industrial plant, depending upon the desired arrangement and the availability of special equipment.

HEALTH

Local Medical Personnel

Physicians - 18
Dentists - 8

Hospitals

<u>General Hospital</u>	<u>Location</u>	<u>Beds</u>
King's Daughters' Hospital	Shelbyville	76

General hospital facilities - Five-bed intensive care and coronary care unit, laboratory, X-ray, three operating rooms, recovery room, cystoscopic room, fracture room, obstetric facilities, three delivery rooms, emergency room, respiratory therapy, physical therapy, pharmacy

Medical staff - 26 active physicians, 15 courtesy physicians, 28 registered nurses (full-time equivalent), 10 licensed practical nurses (full-time equivalent), and two registered pharmacists.

Ambulance Service

Name - Shelby County Emergency Medical Services
Staff - Four full-time, six part-time
Service - 24-hour service, county-wide
Equipment - Two primary ambulances and one back-up ambulance

Public Health

Facility - North Central District Health Department - Shelby County
Staff - Two registered nurses (full-time), one registered nurse (part-time), two health environmentalists (one full-time, one part-time), one community health worker, two clerks

OTHER LOCAL FACILITIES

Communications

Telephone - Services -	South Central Bell Telephone Company Standard
Telegraph - Services -	Western Union Toll-free number, 1-800-325-5100; counter service available locally
Postal - Class - Mail received - Mail dispatched -	U.S. Post Office* First Once daily Once daily
Newspapers - Twice weekly and circulation - Other papers received from -	The Sentinel-News 7,200 Louisville and Lexington, Kentucky
Radio - Stations received from -	WCND-AM Lexington, Louisville, Frankfort and Eminence, Kentucky
Television - Cable service Reception from -	Louisville and Lexington, Kentucky; Cincinnati, Ohio; Atlanta, Georgia; Nashville, Tennessee; Chicago, Illinois
Kentucky Educational Television -	Owenton transmitter, Channel 52

Library Services

Public library - Shelby County Library District
Size collection - 41,345 volumes
Circulation, 1982-83 - 152,199 (library and bookmobile)
Services - Story hour, films, pictures, records, magazines, reading room,
newspapers, filmstrips, bookmobile, copying machine, Kentucky history
collection, genealogy

* The U.S. Postal Service has recently completed the construction of a new post office building in Shelbyville. The new facility is located at the corner of Main and 4th Streets.

Religious Institutions

Shelby County

Number of churches -	35
Denominations -	AME
	Apostolic
	Baptist
	Catholic
	Christ Ambassador
	Christian
	Church of Christ
	Church of the Nazarene
	Disciples of Christ
	Episcopal
	Interdenominational
	Pentecostal
	Presbyterian
	United Methodist
	Wesleyan
Nearest Synagogues -	Louisville, 31 miles west
Congregations -	Adath Israel Brith Sholom (reform)
	Adath Jeshurum (conservative)
	Anshei Sfard (orthodox)
	Keneseth Israel (orthodox)
	Sholom (reform)

Financial Institutions

<u>Banks</u>	<u>Assets</u>	<u>Deposits</u>	<u>Statement Date</u>
Bank of Shelbyville	\$ 30,896,738.68	\$ 27,100,392.06	6/30/83
Citizens Union Bank	46,974,276.14	41,808,695.09	6/30/83
Farmers & Traders Bank	22,797,000.00	20,589,000.00	6/30/83
Peoples Bank	27,055,889.89	22,203,180.01	6/30/83
Shelby County Trust Bank	39,507,523.00	34,396,459.00	6/30/83
<u>Savings and Loan Associations</u>	<u>Assets</u>	<u>Savings Accounts</u>	<u>Statement Date</u>
The Cumberland*	\$ 829,490,237.00	\$ 669,466,812.00	12/31/82
Great Financial Federal*	820,526,608.78	721,354,749.33	6/30/83

* The Cumberland and Great Financial Federal are each based in Louisville and operate branch offices in Shelbyville and other Kentucky cities.

Motels

Total number - 3*

Total rooms - 71

Clubs and Organizations

American Legion
Beta Sigma Phi
Boy Scouts
Business and Professional Women
Children's Art League
Christian Women's Club
Daughters of the American Revolution
Democratic Woman's Club
Downtown Business Association
Eastern Star
4-H
Future Farmers of America
Garden Club
Girl Scouts
Golf and Fishing Club
Guist Creek Bass Club
Guist Creek Ski Club
Helping Hand
Historical Society
Homemakers
Jaycees
King's Auxiliary
King's Daughters' Circle
Kiwanis
Lions
Masons
Moose
Odd Fellows
Parent-Teacher Association
Rebekahs
Rotary
Ruritan Club
Senior Citizens
Shelby County Chamber of Commerce
Shelby County Industrial and Development Foundation
Shelby County Tobacco Board of Trade
Shelby County Women's Club
Speed Art Museum Guild
Triple L Club

* Construction of a Best Western motel began in early 1984. The new motel will be located at the intersection of Interstate 64 and Kentucky 55 and will contain approximately 50 rooms. The motel will begin operations during the summer of 1984.

RECREATION

Local

Recreational facilities in Shelbyville include nine ball diamonds, one central park, three mini-parks, one swimming pool and nine tennis courts. The country club offers an 18-hole golf course, a swimming pool, a clubhouse and tennis courts.

The 132-acre Clear Creek Park is located adjacent to Lake Shelby, a 100-acre fishing lake. The park contains three softball fields, four baseball fields, six tennis courts, three soccer fields, boat rentals, a boat ramp and dock, three shelters, a playground, four horseshoe pits and an activities center. A golf driving range and miniature golf are planned for the spring of 1984.

Guist Creek Lake, located four miles east of the city, is a 325-acre skiing and fishing lake with both primitive and recreational vehicle camping available.

A fine collection of English antiques, Georgian silver, limited edition porcelain and paintings are featured at Shelbyville's Wakefield-Scearce Galleries. Historic Science Hill Inn is located beside the Galleries.

The Shelby County Community Theatre, located at 8th and Main Streets, is a new development offering live performances for the Shelbyville area.

Area (Within 50 miles)

Several urban areas are located within easy driving distance of Shelbyville.

Frankfort, the capital of Kentucky, is 21 miles east of Shelbyville. Points of interest in Frankfort include the Capitol Building, a 34-foot floral clock, the Daniel Boone Monument, several museums, and old homes with their original furnishings. Frankfort is also the home of Kentucky State University which offers many cultural activities and sporting events.

Louisville, 31 miles west of Shelbyville, provides a wide variety of recreational opportunities. The most noted recreational event in Louisville is the Kentucky Derby at Churchill Downs. The "Run for the Roses" is the oldest continuously held horse race in the United States. Other attractions include: Kentucky Center for the Arts, Macauley Theatre, Actors Theatre of Louisville, Louisville Children's Theatre, the Louisville Bach Society, the Louisville Orchestra, the Louisville Ballet, the Kentucky Opera Association, several museums, the Louisville Zoological Gardens, University of Louisville sporting events, rock concerts, and the "Belle of Louisville" sternwheeler.

Lexington, 50 miles east of Shelbyville, offers a variety of cultural, sporting, and recreational activities. Thoroughbred and harness racing is presented at Keeneland Race Course and the Red Mile Harness Track during several meets each year. The University of Kentucky and Transylvania University offer a number of sporting events. The University of Kentucky basketball games are held at Rupp Arena, the world's largest basketball arena. Other attractions include Lexington Philharmonic concerts, Lexington Children's Theatre, and plays performed by Broadway touring companies, all held in the recently renovated Opera House.

Taylorsville Lake, 15 miles south of Shelbyville near Taylorsville, was developed by the U.S. Army Corps of Engineers. The 3,050-acre lake and 10,700-acre recreation area offer facilities for fishing, boating, swimming, and wildlife recreation.

E. P. "Tom" Sawyer State Park, 21 miles west of Shelbyville, is located near Louisville. Recreational facilities include an outdoor Olympic-size pool, a bathhouse, 12 lighted tennis courts, a picnic area, an archery range, and soccer fields. Planned recreation and a playground are offered year-round. Indoor facilities are available for basketball, volleyball, exercise classes, dance classes and various other events.

General Butler State Resort Park is located 38 miles north of Shelbyville near Carrollton. The park includes a 30-acre lake, a boat dock, a 9-hole golf course, a miniature golf course, a swimming pool, playgrounds, shuffleboard, tennis courts, planned recreation, fishing, camping, horseback riding, 58 lodge rooms, cottages, and gift shops. General Butler's family home, the Butler Mansion, has been restored and contains a museum of Ohio River lore. Another unique feature is the Ski Butler ski area that has five ski runs, a ski shop, rental equipment, a ski school and chair lifts.

My Old Kentucky Home State Park, 43 miles southwest of Shelbyville in Bardstown, portrays an image of the South's gentle and leisurely home life before the Civil War. The restored Georgian Colonial mansion is where composer Stephen Foster visited and where he was inspired to write "My Old Kentucky Home." One of the nation's most successful outdoor dramas, "The Stephen Foster Story", is presented in the park's amphitheatre during the summer months. The park also offers a 40-site campground, a gift shop, a 9-hole golf course and pro shop, a picnic area, and planned recreation.

The Kentucky Horse Park, a park dedicated to horses and to man's love for horses, is located 44 miles east of Shelbyville near Lexington. The park, which contains more than 1,000 acres of Kentucky Bluegrass, features the International Museum of the Horse; the Man O'War Memorial; an antique carriage display; horseback and pony rides; walking farm tours; horse-drawn tours; a restaurant; a gift shop; and a campground area, which offers swimming, tennis, and planned activities. Numerous special events are held year-round and include various horse shows, steeplechasing, dressage, polo games, and rodeos.

Old Fort Harrod State Park, 45 miles southeast of Shelbyville, is a 28-acre park in Harrodsburg that features a full-scale reproduction of the original Fort Harrod. The park also contains the log cabin where Abraham Lincoln's parents were wed, the Mansion Museum which houses mementos associated with the great periods of Kentucky history, a pioneer cemetery, and a federal monument dedicated to pioneers. The "Legend of Daniel Boone" and "Lincoln" are two excellent outdoor dramas which are performed at the Old Fort Amphitheater during the summer months.

Lincoln Homestead State Park, 48 miles south of Shelbyville near Springfield, is a 153-acre park on land settled by Abraham Lincoln's family. The actual building in which Nancy Hanks, mother of President Lincoln, lived during her courtship with Thomas Lincoln is preserved here as well as a replica of the 1782 cabin where Thomas Lincoln lived as a boy. The park also has a museum, a gift shop, a picnic area, and an 18-hole golf course.

Bernheim Forest Arboretum and Nature Center, located 49 miles southwest of Shelbyville, is a privately endowed 10,000-acre forest and wildlife refuge. The area contains over 1,400 labeled varieties of plants, trees and shrubs; ornamental gardens; a museum; nature trails and waterfowl ponds.

COMMUNITY IMPROVEMENTS

Recent

Shelbyville was chosen as a "Kentucky Certified City" in 1981, 1982 and 1983. The award is based on achievement or potential in the following categories: economic development, transportation, public affairs, utilities, health, commercial development, housing, education, and recreation.

The U. S. Postal Service has recently completed the construction of a new post office building in Shelbyville. The new facility is located at the corner of Main and 4th Streets.

Under Way

Shelbyville Municipal Water and Sewer Commission is in the process of upgrading its sewage treatment plant. Additions to the plant are to include rotating biological contactors, chlorine contact basin, additional drying beds and a second secondary clarifier. A major aspect of the project is to decrease the large amount of infiltration/inflow into the system during wet weather. The project is scheduled for completion in the fall of 1984.

Construction of a Best Western motel began early 1984. The new motel will be located at the intersection of Interstate 64 and Kentucky 55 and will contain approximately 50 rooms. The motel will begin operations during the summer of 1984.

Planned

Four existing industrial firms have announced plans to expand their Shelbyville facilities. The expansions represent an investment of over \$2,800,000.

The Shelbyville Municipal Water and Sewer Commission has developed plans to expand the water treatment plant from a capacity of 3.0 million gallons per day to 4.6 million gallons per day.

The Shelby County Suburban Fire Department plans to begin construction of a new substation at the industrial park in 1984. The project is planned for completion in late 1984.