

1979

Industrial Resources: Warren County - Bowling Green

Kentucky Library Research Collections
Western Kentucky University, spcol@wku.edu

Follow this and additional works at: https://digitalcommons.wku.edu/warren_cty

 Part of the [Business Administration, Management, and Operations Commons](#), [Growth and Development Commons](#), and the [Infrastructure Commons](#)

Recommended Citation

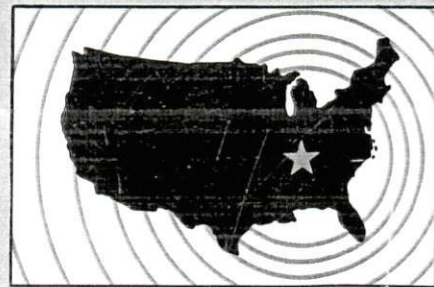
Kentucky Library Research Collections, "Industrial Resources: Warren County - Bowling Green" (1979). *Warren County*. Paper 14. https://digitalcommons.wku.edu/warren_cty/14

This Report is brought to you for free and open access by TopSCHOLAR®. It has been accepted for inclusion in Warren County by an authorized administrator of TopSCHOLAR®. For more information, please contact topscholar@wku.edu.

INDUSTRIAL RESOURCES

BOWLING GREEN

*Kentucky
first*



DEPARTMENT OF COMMERCE

BOWLING GREEN, KENTUCKY --- Index to Industrial Sites --- 1979

For detailed data on individual sites, contact Mr. Harold Huffman, P. O. Box 51, Bowling Green, Kentucky 42101 or the Kentucky Department of Commerce, Industrial Development Division, Capital Plaza Tower, Frankfort, Kentucky 40601.





779
110 ac.

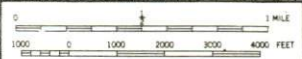
879
181 ac.

979
71 ac.

1079
50 ac.

AVAILABLE SITES
 179
10 ac.
 (General location)

- EXISTING INDUSTRIES**
- A. FMC CORP.
 - B. BOWLING GREEN OVERHEAD DOOR
 - C. CONTINENTAL POLY, INC.
 - D. COLT INDUSTRIES
 - E. LORD CORP.
 - F. RAD SERVICES, INC.
 - G. MODERN WELDING CO., INC.
 - H. WESTERN KRAFT PAPER GROUP
 - J. CONCRETE PRODUCTS
 - K. UNIVERSAL COOPERATIVES
 - L. CUTLER-HAMMER, INC.
 - M. ATOMASTER DIVISION OF KOEHRING CO.
 - N. DETREX CHEMICAL CO.
 - O. AVAILABLE INDUSTRIAL BUILDING
 - P. COCA-COLA BOTTLING CO., INC.
 - R. BADA CO., INC.
 - R. AVAILABLE INDUSTRIAL BLDG.



CONTOUR INTERVAL 10 FEET
 BASE: USGS 7.5 MINUTE SERIES - 1958-68

INDUSTRIAL RESOURCES
BOWLING GREEN, KENTUCKY

Prepared By
The Kentucky Department of Commerce
Division of Research and Planning
in cooperation with
The Bowling Green-Warren County Chamber of Commerce, Inc.

1979

Program manager: Patsy Wallace; production supervisor: Pam Riley;
research: Prudence Runyan; clerical: Annette Mitchell; graphics:
Frank Ferrante, Tony Ceconni, Richard Spencer; cartography: Industrial
Development Division. Cost of printing paid from state funds.

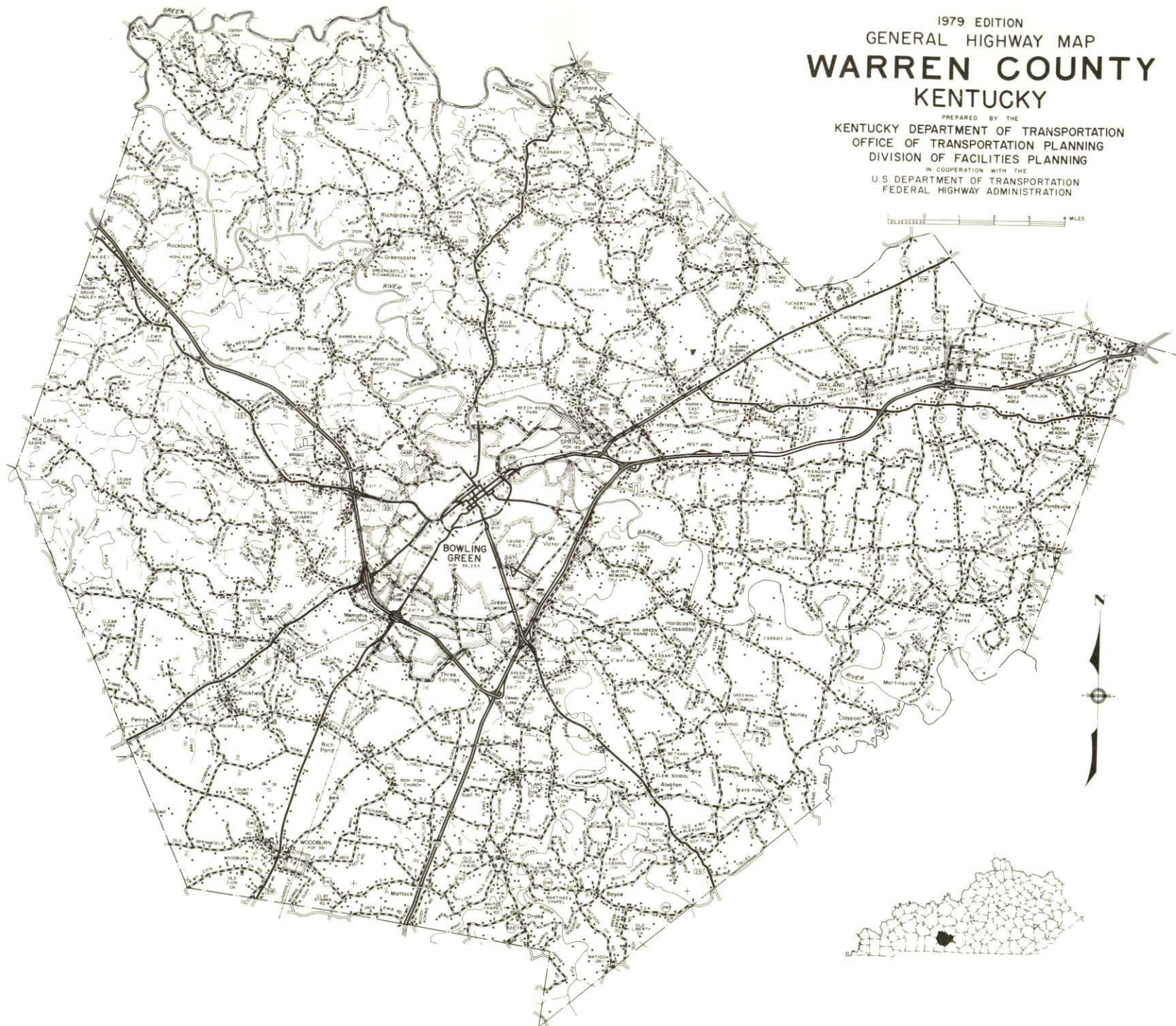
TABLE OF CONTENTS

<u>Chapter</u>	<u>Page</u>
INDUSTRIAL SITES	i
SUMMARY OF INDUSTRIAL RESOURCES - BOWLING GREEN, KENTUCKY	1
THE LABOR MARKET AREA	6
Population	6
Labor Force Characteristics of Residents, 1977	6
Bowling Green Manufacturing Firms With 50 or More Employees, Their Products and Employment	7
Labor Organizations	9
Industrial Services	9
Estimated Male Labor Supply	15
Estimated Female Labor Supply	15
Average Weekly Wages by Industry, by Place of Work, 1977	16
Per Capita Personal Income	18
TRANSPORTATION	19
Rail	19
Highways	19
Truck Service	20
Air	22
Bus	23
Taxi	23
Rental Services	23
Water	23
POWER AND FUEL	24
Electricity	24
Natural Gas	24
Other Fuels	25
WATER AND SEWERAGE	26
Water	26
Sewerage	29
CLIMATE	31

<u>Chapter</u>	<u>Page</u>
LOCAL GOVERNMENT	32
City	32
County	32
Assessed Value of Property	32
Property Taxes	32
Combined State and Local Rates Per \$100 Valuation, 1978	35
Utilities Gross Receipts Tax for Schools	35
Planning and Zoning	35
Safety	36
Police	36
Fire	36
Rescue Service	36
Refuse Collection and Disposal	36
EDUCATION	37
Public Schools	37
Nonpublic Schools	37
Area Colleges and Universities	41
Vocational Schools	42
HEALTH	45
Local Medical Personnel	45
Hospitals	45
Other Medical Facilities	46
Ambulance Service	46
Public Health	46
OTHER LOCAL FACILITIES	48
Communications	48
Library Services	48
Religious Institutions	49
Financial Institutions	49
Hotels and Motels	49
Clubs and Organizations	53
RECREATION	56
COMMUNITY IMPROVEMENTS	60

1979 EDITION
GENERAL HIGHWAY MAP
WARREN COUNTY
KENTUCKY

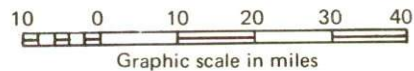
PREPARED BY THE
KENTUCKY DEPARTMENT OF TRANSPORTATION
OFFICE OF TRANSPORTATION PLANNING
DIVISION OF FACILITIES PLANNING
IN COOPERATION WITH THE
U.S. DEPARTMENT OF TRANSPORTATION
FEDERAL HIGHWAY ADMINISTRATION



BOWLING GREEN LABOR MARKET AREA

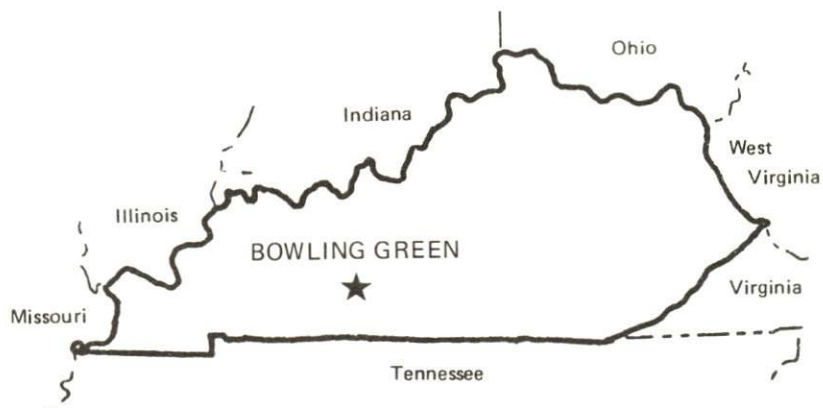


Shaded area denotes Labor Market Area.



SUMMARY OF INDUSTRIAL RESOURCES
BOWLING GREEN, KENTUCKY

LOCATION



Road Distance in Miles:

Atlanta	<u>307</u>	Baltimore	<u>688</u>
Chicago	<u>407</u>	Detroit	<u>475</u>
New York	<u>863</u>	St. Louis	<u>280</u>

POPULATION

City of Bowling Green, 1976	<u>38,224</u>
Warren County, 1977	<u>63,700</u>
Labor Market Area, 1977	<u>164,500</u>
% Nonwhite, Warren County, 1970	<u>8.6</u>

LABOR ANALYSIS

Labor Market Area - Warren, Allen, Barren, Butler, Edmonson, Logan and Simpson Counties

Estimated available workers from labor market area:

Male	<u>6,782</u>	Female	<u>6,061</u>
Unemployment rate, 1977		Labor Market Area	<u>4.3%</u>
Warren County	<u>4.1%</u>	Edmonson County	<u>8.6%</u>
Allen County	<u>3.4%</u>	Logan County	<u>3.5%</u>
Barren County	<u>4.2%</u>	Simpson County	<u>4.2%</u>
Butler County	<u>5.9%</u>		

Total employment, Warren County, 1977 - 32,079

Manufacturing employment in labor market area, 1977 - 21,218

Major local manufacturing plants:

<u>Name</u>	<u>Employment</u>
<u>Bowling Green Plant, Holley Carburetor</u>	
<u>Division of Colt Industries</u>	<u>2,000</u>
<u>Cutler-Hammer, Inc.</u>	<u>900</u>
<u>Dibrell-Kentucky, Inc.</u>	<u>550</u>
<u>F M C Corporation</u>	<u>555</u>
<u>Firestone Textiles Company</u>	<u>738</u>
<u>Koehring Company, Atomaster Division</u>	<u>569</u>
<u>Union Underwear Company, Inc.</u>	<u>1,315</u>

Labor unions in local manufacturing plants:

Machinists; Auto Workers; Sheet Metal Workers; Teamsters; Operating Engineers; Carpenters

TRANSPORTATION

Highways:

Interstate - I-65; Parkway - Green River Parkway
U. S. Highways - U. S. 31-W, U. S. 231, U. S. 68

Rail:

Railroad - Louisville and Nashville Railroad; Amtrak
Piggyback service - Yes

Truck:

Number of interstate motor carriers - 10; Terminals - 7

Water:

Nearest navigable river - Green River
Nearest public riverport - Owensboro
Distance - 71 miles

Air:

Nearest commercial service - Nashville Metropolitan Airport, Nashville, Tennessee
Distance - 65 miles; Airlines serving - Allegheny, American, Braniff, Delta, Eastern, Piedmont, Ozark, Southern, and five commuter airlines
Nearest local airport - Bowling Green-Warren County Airport
Distance - 1/2 mile; Runway length - 6,500 feet; 4,000 feet

UTILITIES AND SERVICES

Electricity:

Local distributor - Bowling Green Municipal Utilities
Source of power - Tennessee Valley Authority

Natural Gas:

Local distributor - Western Kentucky Gas Company
Source of supply - Texas Gas Transmission Corporation
Available for new industry - No

Other Fuels:

Number of propane distributors - 2
Number of distillate fuel oil distributors - 7

Water, treated:

Local supplier - Municipal
Excess municipal system capacity - 2,000,000 gpd
Expansions planned - Expansion under way to 15,000,000 gpd

Water, raw:

Source for industrial use - Barren River

Sewer:

Excess treatment capacity - 2,400,000 gpd
Planned expansions - Yes

Industrial Services:

	<u>Location</u>	<u>Miles Distant</u>
Tool & Die, Machine & Pattern Shops	<u>Bowling Green</u>	<u>--</u>
Metal Service Centers	<u>Bowling Green</u>	<u>--</u>
Heat Treating	<u>Nashville, Tennessee</u>	<u>65</u>
Metal Finishers	<u>Nashville, Tennessee</u>	<u>65</u>
Electric Motor Repair	<u>Bowling Green</u>	<u>--</u>

CLIMATE

Temperature, Normal - 59.4 degrees F.
Precipitation, Normal - 46.0 inches
Snowfall, Mean Annual - 10.9 inches
Prevailing winds - South
Relative humidity (%) - 6 a.m. 84; 6 p.m. 62

GOVERNMENT

Type - Mayor-City Manager-City Commission

Police personnel - full-time - 73

Fire department personnel - full-time - 88

Fire insurance rating (A.I.A.), class - Inside city - 6
Outside city - 10

TAXES

Property taxes:

Combined state and local rates per \$100 valuation, 1978
(100% assessment)

	<u>Inside City of Bowling Green</u>	<u>Outside City</u>
1. Land and buildings	\$1.300	\$0.550
2. Mfg. machinery, raw materials, goods in process, pollution control equipment	0.150	0.150
3. Finished goods, office equipment, vehicles, other tangibles	1.435	0.685
4. Intangibles (accounts rec., notes, bonds, etc.)	0.250	0.250
5. Leaseholds in I. R. bond financed plants	0.015	0.015

Special local taxes:

Net profits tax - 1 1/2%

Utilities tax - 3% of electric, gas, water, sewer, telephone services

EDUCATION

State vocational-technical school - Bowling Green State Vocational-Technical School, Bowling Green

College or university - Western Kentucky University, Bowling Green

Public Schools:

High school enrollment - 3,408; Student/teacher ratio - 16-1

Junior high school enrollment - 675; Student/teacher ratio - 16-1

Elementary school enrollment - 7,590; Student/teacher ratio - 20-1

Nonpublic Schools:

Enrollment - 715; Student/teacher ratio - 19-1

FINANCIAL INSTITUTIONS

Banks - 3; Total assets - \$295,295,857.91
Savings & loan associations - 2; Total assets - \$136,167,874.85

COMMUNICATIONS

Local newspaper - Park City Daily News
Local radio stations - WBGN-AM, WDNS-FM, WKCT-AM; WLBJ AM-FM
Television station - WBKO Channel 13, ABC affiliate

MEDICAL

Number of physicians locally - 77; Number of dentists locally - 35
Hospitals - Bowling Green-Warren County Hospital; Number of beds - 298
Greenview Hospital; Number of beds - 157

RELIGIOUS FACILITIES

Churches - Approximately 150; Nearest synagogues - Nashville, Tennessee

PUBLIC LODGING

Total number hotels and motels - 30; Total rooms - 1,713

RECREATION FACILITIES

Public golf courses - 2, Parks - 18, Tennis courts - 21, Swimming
pools - 2, Country clubs - 2
Other major facilities - Movie theatres, 1 drive-in theatre, Beech
Bend Park and International Raceway

Nearest state resort park - Barren River Lake State Resort Park
Camping; Swimming; Fishing; Boating; Lodgings; Dining facility;
Open year round

THE LABOR MARKET AREA

POPULATION

Area	1977*	1970	Percent Nonwhite
			1970
Bowling Green	38,224**	36,705	10.4
Labor Market Area	164,500	152,480	N/A
Warren County	63,700	57,884	8.6
Allen County	13,200	12,598	2.1
Barren County	30,900	28,677	6.3
Butler County	10,800	9,723	0.7
Edmonson County	9,800	8,751	2.7
Logan County	22,000	21,793	10.1
Simpson County	14,100	13,054	12.4

*Provisional Estimates.

**1976 Population Estimates.

Sources: U. S. Department of Commerce, Bureau of the Census, Census of Population, 1970. U. S. Department of Commerce, Bureau of the Census, Current Population Reports, Series P-25, No. 756, January 1979; Series P-26, No. 77-17, November 1978.

LABOR FORCE CHARACTERISTICS OF RESIDENTS, 1977

	Warren County	Labor Market Area
Civilian Labor Force	33,444	82,554
Employment	32,079	79,021
Agricultural	1,757	9,148
Nonagricultural	30,322	69,873
Unemployment	1,365	3,533
Rate of Unemployment (%)	4.1	4.3

Source: Kentucky Department for Human Resources, Kentucky Labor Force Estimates, Annual Averages, 1977.

BOWLING GREEN MANUFACTURING FIRMS WITH 50 OR MORE
EMPLOYEES, THEIR PRODUCTS AND EMPLOYMENT

Firm (Establishment date)	Product	Employment			Organized
		Total	Male	Female	
Bada Company, Inc. (1972) Bowling Green Plant, Holley Carburetor Division of Colt Industries, Inc. (1951)	Lead wheel weights	81	39	42	
Continental Poly, Inc. (1975)	Carburetors	2,000	1,100	900	
	Polyethylene tubes, sheeting film, polyethylene liners, bags	60	55	5	
Cutler-Hammer, Inc. (1964)	Electrical and electronic controls	900	600	300	*
Detrex Chemical Company (1955)	Industrial degreas- ing equipment, commercial dry cleaning equip- ment, hospital instrument clean- ing equipment	181	162	19	*
Dibrell-Kentucky, Inc. (1962)	Tobacco redrying	550	350	200	
Exceptional Industries (1968)	Assemble coils for box springs, wood chair seats and backs	70	30	40	
F M C Corporation (1974)	Truck cranes	555	460	95	
Firestone Textiles Company (1967)	Tire fabric	738	528	210	
Koehring Company, Atomaster Division (1964)	Oil fired portable pace heaters	569	340	229	*
Lord Corporation (1974)	Shock and vibration control systems	68	57	1	
Nehi Royal Crown Bottling Company, Inc. (1931)	Soft drinks	98	89	9	
News Publishing Company (1854)	Newspaper	75	46	29	
Page Welding Division, American Chain and Cable Company, Inc. (1967)	Automatic welding wire	135	125	10	*

(Contd.)

<u>Firm (Establishment date)</u>	<u>Product</u>	<u>Employment</u>			<u>Organized</u>
		<u>Total</u>	<u>Male</u>	<u>Female</u>	
Scott Tobacco Company (1902)	Twist and smoking tobacco	121	20	101	
L. F. Strassheim Company (1929)	Wood brush blocks and handles, furniture parts, chairs, plastic handles	190	130	60	*
Tri State Bedding Company, Inc. (1957)	Mattresses, box springs, felt	65	50	15	*
Union Underwear Company, Inc. (1941)	Men's and boys' underwear	1,315	206	1,109	
Western Kraft Paper Group, Corco Division (1965)	Shipping containers	95	87	8	*

*See Labor Organizations below.

Sources: Kentucky Department of Commerce, Kentucky Directory of Manufacturers, 1979. The Bowling Green-Warren County Chamber of Commerce, Inc.

LABOR ORGANIZATIONS

<u>Union</u>	<u>Representing manufacturing workers at:</u>
Sheet Metal Workers' International Association	Koehring Company, Atomaster Division; Detrex Chemical Company
International Association of Machinists and Aerospace Workers, AFL-CIO	Cutler-Hammer, Inc.; L. F. Strassheim Company
International Union, United Automobile, Aerospace and Agricultural Implement Workers of America	Page Welding Division, American Chain and Cable Company, Inc.
International Brotherhood of Teamsters, Chauffeurs, Warehousemen and Helpers of America	Tri State Bedding Company, Inc.; Western Kraft Paper Group, Corco Division; Western Concrete, Inc.
International Union of Operating Engineers, AFL-CIO	Gary Brothers Crushed Stone Company; State Contracting and Stone Company
United Brotherhood of Carpenters and Joiners of America, AFL-CIO	True Temper Corporation

INDUSTRIAL SERVICES

	<u>Location</u>	<u>Miles Distant</u>
Tool & Die, Machine & Pattern Shops	Bowling Green	--
Metal Service Centers	Bowling Green	--
Heat Treating	Nashville, Tennessee	65
Metal Finishers	Nashville, Tennessee	65
Electric Motor Repair	Bowling Green	--

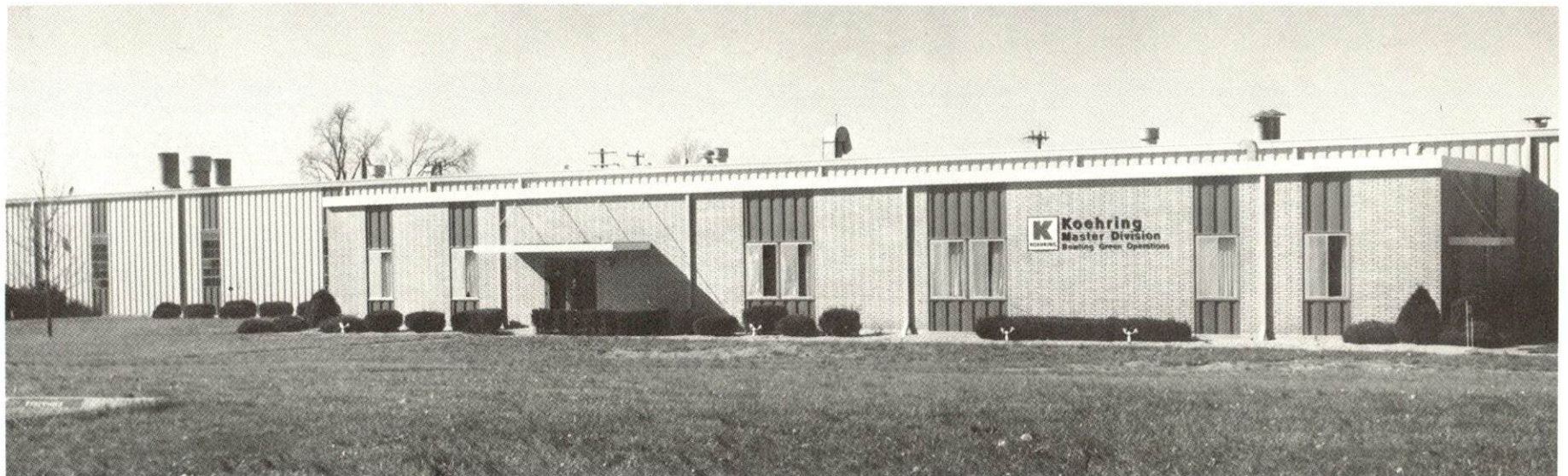
Source: Kentucky Department of Commerce, Division of Research and Planning.



LORD CORPORATION



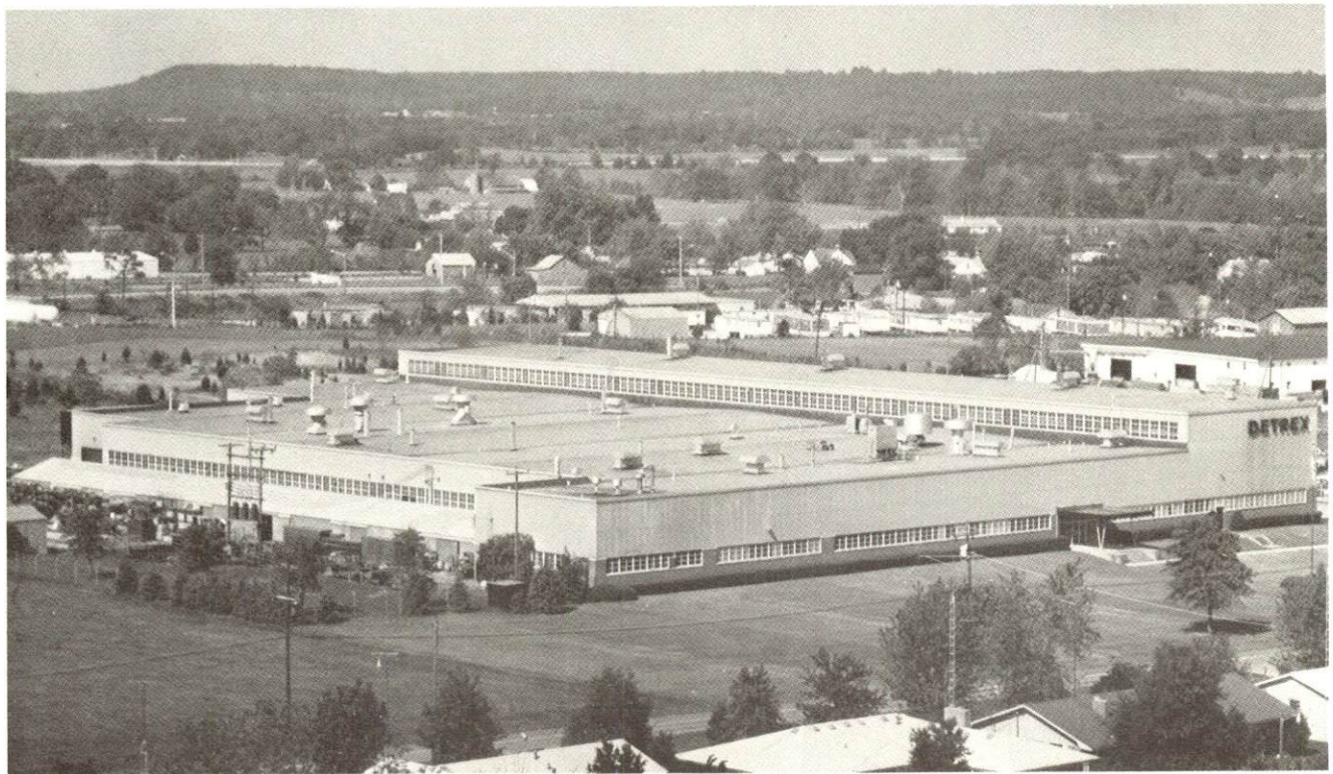
FMC CORPORATION



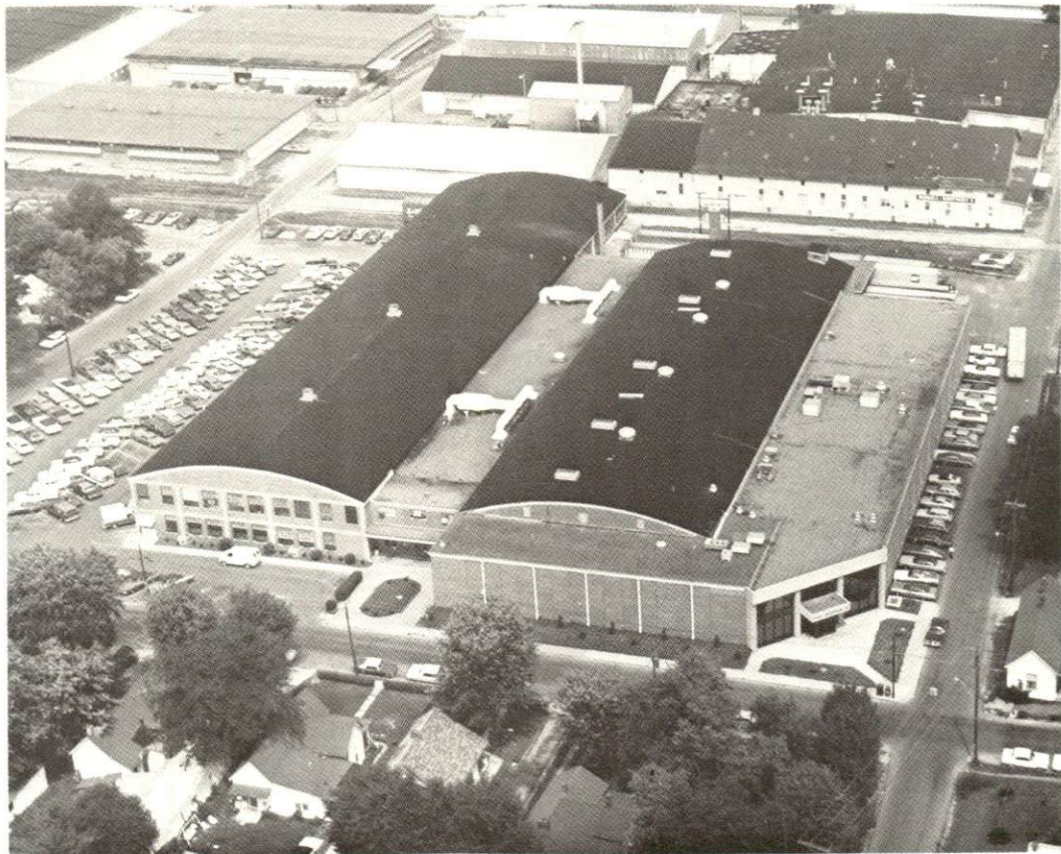
KOEHRING COMPANY, ATOMASTER DIVISION



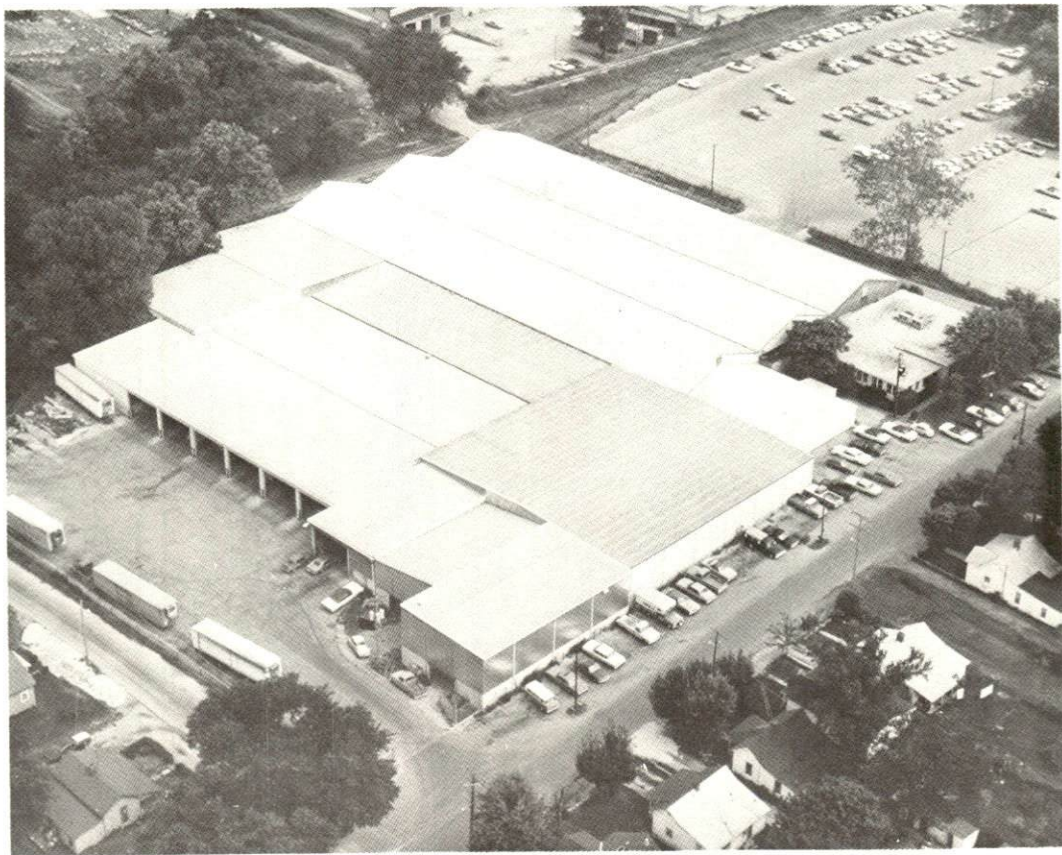
BOWLING GREEN PLANT
HOLLEY CARBURATOR DIVISION OF COLT INDUSTRIES



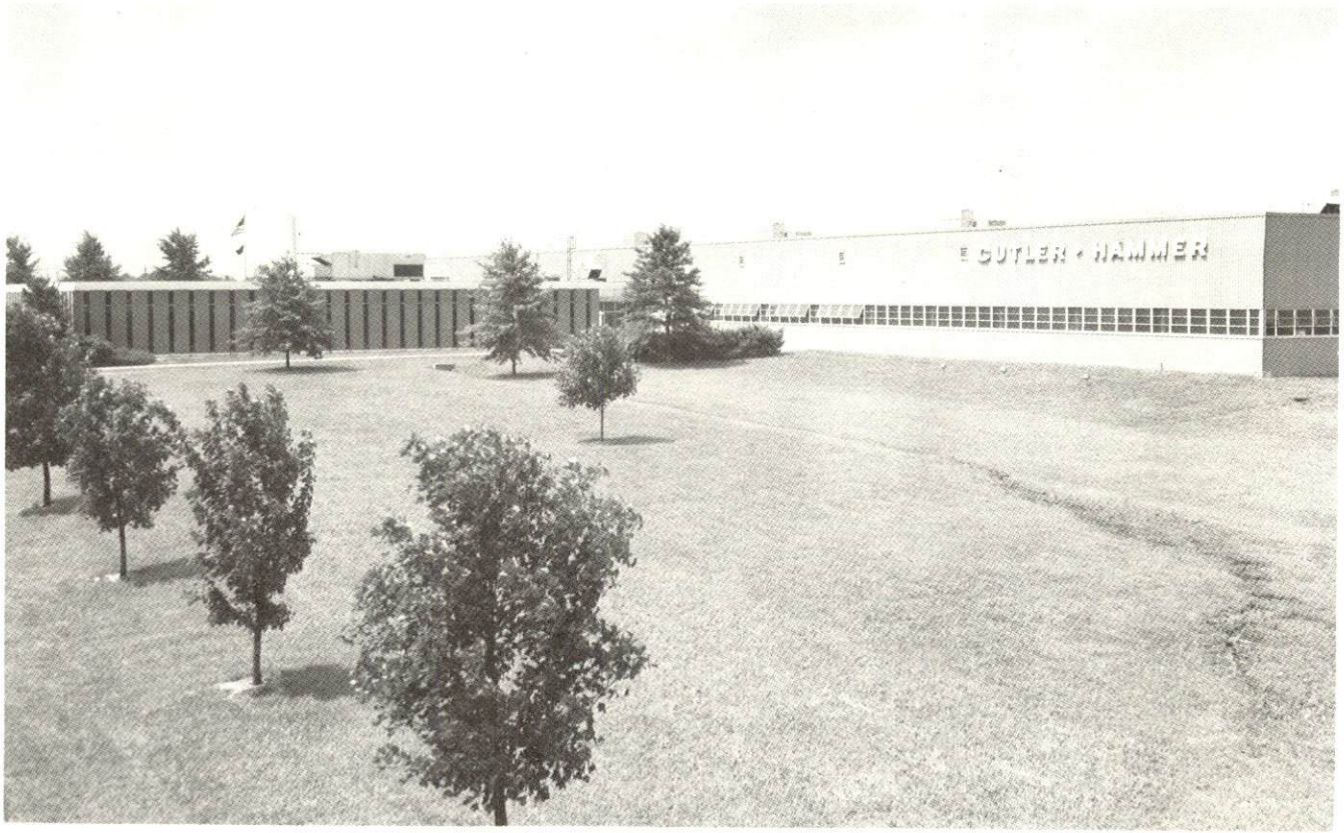
DETREX CHEMICAL COMPANY



UNION UNDERWEAR COMPANY, INC.



HOUCHENS INDUSTRIES HEADQUARTERS



CUTLER-HAMMER, INC.



FIRESTONE TEXTILES COMPANY

ESTIMATED MALE LABOR SUPPLY
WARREN COUNTY LABOR MARKET AREA

Area	Current			Future	
	Total	Not in Labor Force	Unemployed	Under-employed	Reaching 18 years of age before 1985
Labor Market					
Area	6,782	1,180	2,052	3,550	6,925
Warren	2,806	0	816	1,990	2,446
Allen	333	0	143	190	531
Barren	924	0	394	530	1,381
Butler	929	580	139	210	435
Edmonson	761	460	181	120	401
Logan	541	0	221	320	1,051
Simpson	488	140	158	190	680

Sources: Kentucky Department for Human Resources, Kentucky Labor Supply Estimates by County, 1977. Kentucky Department of Commerce, Future Labor Supply Before 1985.

ESTIMATED FEMALE LABOR SUPPLY
WARREN COUNTY LABOR MARKET AREA

Area	Current			Future	
	Total	Not in Labor Force	Unemployed	Under-employed	Reaching 18 years of age before 1985
Labor Market					
Area	6,061	1,010	1,481	3,570	6,564
Warren	2,479	0	549	1,930	2,403
Allen	346	0	96	250	531
Barren	855	0	365	490	1,216
Butler	713	420	93	200	442
Edmonson	852	590	122	140	390
Logan	469	0	149	320	976
Simpson	347	0	107	240	606

Sources: Kentucky Department for Human Resources, Kentucky Labor Supply Estimates by County, 1977. Kentucky Department of Commerce, Future Labor Supply Before 1985.

AVERAGE WEEKLY WAGES BY INDUSTRY,
BY PLACE OF WORK, 1977

	<u>Warren County</u>	<u>Allen County</u>	<u>Barren County</u>	<u>Butler County</u>
All Industries	\$174.84	\$159.44	\$158.91	\$138.61
Mining & Quarrying	211.51	*	201.66	218.56
Contract Construction	164.67	184.45	198.25	90.72
Manufacturing	199.13	175.34	185.52	118.82
Transportation, Communications & Public Utilities	237.61	235.72	200.92	170.55
Wholesale & Retail Trade	132.38	131.42	114.99	123.62
Finance, Insurance & Real Estate	187.52	165.61	182.93	157.30
Services	177.60	98.72	123.94	136.20
Other	99.82	55.97	87.31	0

	<u>Edmonson County</u>	<u>Logan County</u>	<u>Simpson County</u>
All Industries	\$116.17	\$150.10	\$172.33
Mining & Quarrying	91.44	117.01	144.53
Contract Construction	103.88	151.98	141.76
Manufacturing	*	165.85	195.14
Transportation, Communications & Public Utilities	126.15	162.42	266.30
Wholesale & Retail Trade	95.79	113.97	131.82
Finance, Insurance & Real Estate	119.17	134.64	154.26
Services	139.77	110.89	105.51
Other	*	63.33	83.97

*Not disclosed.

Note: Excludes domestic workers, railway workers; certain nonprofit corporations; majority of federal, state, and local government workers; and self-employed workers.

Source: Kentucky Department for Human Resources, Average Weekly Wages of Workers Covered by Kentucky Unemployment Insurance Law, 1977.

Air

Local

Location: Bowling Green-Warren County Airport
1/2 mile southeast of Bowling Green
Runways: 2 paved
Length: 6,500 feet; 4,000 feet
Traffic
Control: Wind tee, airport advisory service
Lighting: Runways, obstructions, taxiways,
beacon, wind tee, strobes approach to 3
Services: Air Kentucky (commuter) Airlines; 100
octane, Jet A-50; storage; major and
minor A and E repairs; oxygen; FAA Flight
Service Station; taxi and car rental
service; snack bar
Air Freight
Service: Air carrier accepts air freight on a space
available basis

Nearest Commercial

Location: Nashville Metropolitan Airport
Nashville, Tennessee, 65 miles south
of Bowling Green
Runways: 3 paved
Length: 8,000 feet; 7,700 feet; 4,025 feet
Traffic
Control: Tower, ground control, clearance, departure,
arrival, Automatic Terminal Information
Service
Lighting: Runway and beacon
Services: Allegheny, American, Braniff, Delta, Eastern,
Ozark, Piedmont, Southern, Hughes Air West
(beginning in near future), Air Kentucky
(commuter), Tennessee Airways (commuter),
Vale (commuter), Air Bama (commuter),
Comair (commuter); 100/130 octane, jet fuel;
major repairs; tie downs and hangars; charter
service; flight instructions; limousine; bus;
taxi; car - plane rentals; weather information;
restaurant; hotel
Air Freight
Service: Air freight terminal regularly serviced by
freight carrying airlines

Bus - Fuqua Bus Lines, Greyhound Bus Lines, Tennessee Trailblazers

Taxi - One company, 24-hour radio dispatched service

Rental Services - Automobile, truck, and trailer rentals available

Water

Bowling Green is approximately 50 miles southeast of the Green River at Rochester, Kentucky. A 9-foot navigation channel is maintained on the Green River from Rochester to the Ohio River.

POWER AND FUEL

Electricity

Company serving Bowling Green - Bowling Green Municipal Utilities
Source of power - Tennessee Valley Authority
Total generating capacity - 27,071,480 KW*
For industrial rates contact:

Bowling Green Municipal Utilities
801 Center Street
Bowling Green, Kentucky 42101
(502) 782-1200

Company serving Warren County - Warren Rural Electric Cooperative
Corporation
Source of power - Tennessee Valley Authority
Total generating capacity - 27,071,480 KW*
For industrial rates contact:

Warren RECC
951 Fairview Avenue
Bowling Green, Kentucky 42101
(502) 842-6541

Natural Gas

Company serving Bowling Green - Western Kentucky Gas Company
Source of supply - Texas Gas Transmission Corporation
Size of transmission mains - 8 and 10 inches (supplier)
6 inches (distributor)
Distribution mains - 1 1/4 to 10 inches
Distribution pressure - 30 psi
Btu content - 1,000 per cubic foot
Specific gravity - .60
For rates and supplies contact:

Western Kentucky Gas Company
1020 College Street
Bowling Green, Kentucky 42101
(502) 842-2447

*1976 capacity in service - kilowatts.

Other Fuels

Propane

Miller's Bottled Gas, Inc.
110 East Campbell Lane
Bowling Green, Kentucky 42101

Southern States Bowling
Green Petroleum Cooperative
Emmett Drive
Bowling Green, Kentucky 42101

Fuel oils

Distillate fuel oil -

Browning Oil Company
Louisville Road
Bowling Green, Kentucky 42101

Chevron U.S.A., Inc
316 Portage Railroad
Bowling Green, Kentucky 42101

Ike L. Duncan Gulf Distributor
800 Power
Bowling Green, Kentucky 42101

Exxon Company U.S.A.
3170 Industrial Boulevard
Bowling Green, Kentucky 42101

Ramsey Oil Company
(Phillips 66 Fuel Oils)
633 U. S. 31-W Bypass
Bowling Green, Kentucky 42101

Southern States Bowling
Green Petroleum Cooperative
Emmett Drive
Bowling Green, Kentucky 42101

Texaco Heating Oil
(R. C. McKinney Distributor)
110 Plain Avenue
Bowling Green, Kentucky 42101

Residual fuel oil - Arrangements must be made with the refinery.

Low sulphur content coal - Available in eastern Kentucky.

WATER AND SEWERAGE

Water

Company serving Bowling Green - Bowling Green Municipal Utilities*
P. O. Box 478
Bowling Green, Kentucky 42101
(502) 782-1220

Source - Barren River
Treatment plant capacity - 10,500,000 gpd
Average daily consumption - 8,500,000 gallons
Peak daily consumption - 10,500,000 gallons
Type treatment - Conventional rapid sand filtration
Storage capacity - 7,000,000 gallons
Size lines - 24, 20, and 18 inches
Average pressure - 70 psi
Average temperature - 62.6 degrees F.

*An expansion and renovation of the water treatment plant currently under way will increase the filtration capacity to 22,000,000 gpd with a rated treatment plant capacity of 15,000,000 gpd of potable water. The treatment method will be changed to mixed media high rate filtration. Work on the expansion and renovation is expected to be completed in August of 1979. Construction will begin in the spring of 1979 on a 16-inch water main, a booster station, and a 1,000,000-gallon elevated storage tank.

MONTHLY WATER RATES FOR WHOLESAL
AND INDUSTRIAL CONSUMERS

Inside City

First	300 cu. ft.	\$2.80 (minimum)
Next	200 cu. ft.	.89 per 100 cu. ft.
Next	1,000 cu. ft.	.85 per 100 cu. ft.
Next	1,500 cu. ft.	.78 per 100 cu. ft.
Next	3,000 cu. ft.	.75 per 100 cu. ft.
Next	4,000 cu. ft.	.61 per 100 cu. ft.
Next	15,000 cu. ft.	.53 per 100 cu. ft.
Next	25,000 cu. ft.	.36 per 100 cu. ft.
Next	50,000 cu. ft.	.32 per 100 cu. ft.
All over	100,000 cu. ft.	.27 per 100 cu. ft.

Outside City

First	300 cu. ft.	\$3.92 (minimum)
Next	200 cu. ft.	1.25 per 100 cu. ft.
Next	1,000 cu. ft.	1.19 per 100 cu. ft.
Next	1,500 cu. ft.	1.09 per 100 cu. ft.
Next	3,000 cu. ft.	1.05 per 100 cu. ft.
Next	4,000 cu. ft.	.85 per 100 cu. ft.
Next	15,000 cu. ft.	.74 per 100 cu. ft.
Next	25,000 cu. ft.	.50 per 100 cu. ft.
Next	50,000 cu. ft.	.45 per 100 cu. ft.
All over	100,000 cu. ft.	.38 per 100 cu. ft.

Tap-on charges:	5/8-inch	\$ 200
	1-inch	325
	2-inch	1,200*
	4-inch	2,750*
	6-inch	4,200*

*Estimated cost of labor and materials. Balance will be refunded if estimate exceeds cost.

Company serving Warren County - Warren County Water District -
 Sewer Division
 951 Fairview
 Bowling Green, Kentucky 42101
 (502) 842-6541

Date when water district began providing sewerage service - 1970

Note: The District's sewerage mains empty into the Bowling
 Green Municipal Utilities' sewage treatment plant.
 1,500,000 gallons can be disposed of daily

Treated effluent discharged into - Barren River

Size of sanitary mains - 24 to 8 inches

Rates -

First	2,000 gallons	\$4.00 (minimum)
Next	3,000 gallons	1.50 per M gallons
Next	3,000 gallons	1.00 per M gallons
Next	4,000 gallons	.85 per M gallons
Next	20,000 gallons	.75 per M gallons
Next	50,000 gallons	.60 per M gallons
Next	60,000 gallons	.50 per M gallons
Next	3,000,000 gallons	.30 per M gallons
All over		.20 per M gallons

Tap-on charge:	5/8-inch meter	\$100
	3/4-inch meter	150
	1-inch meter	190
	1 1/2-inch meter	200
	2-inch meter	250
	3-inch meter	300
	4-inch meter	300
	Larger than 4-inch	Based on cost of labor and materials

CLIMATE

Warren County

Temperature

Normal (30-year record)	59.4 degrees
Average annual 1977	59.4 degrees
Record highest, July, 1952 (38-year record)	107.0 degrees
Record lowest, January, 1963 (38-year record)	-15.0 degrees
Normal heating degree days (30-year record)	3,696
(Heating degree day totals are the sums of negative departures of average daily temperatures from 65 degrees F.)	

Precipitation

Normal (30-year record)	46.00 inches
Mean annual snowfall (35-year record)	10.90 inches
Total precipitation 1977	50.71 inches
Mean number days precipitation (.01 inch or more)	
(36-year record)	119
Mean number days thunderstorms (36-year record)	55

Prevailing Winds (22-year record) South

Relative Humidity (12-year record)

Midnight	79 percent
6 a.m.	84 percent
Noon	58 percent
6 p.m.	62 percent

Source: U. S. Department of Commerce, Environmental Science Services Administration, Climatological Data, 1977.
Station of record: Nashville, Tennessee.

LOCAL GOVERNMENT

City

Structure - Mayor - 4-year term; 4 commissioners - 2-year terms;
city manager
Budget 1978 - General Fund \$7,048,948
Water and Sewer Fund 2,443,726
Fees and licenses - 1 1/2 percent of net profits of businesses;
1 1/2 percent of gross wages and earnings of individuals

County

Structure - County Judge/Executive - 4-year term;
8 magistrates - 4-year terms
Budget 1978-79 - General Fund \$1,384,272; Road Fund \$430,500

Assessed Value of Property

<u>Classes of Property</u>	<u>Bowling Green (1978)</u>	<u>Warren County (1978-79)</u>
Real Estate	\$292,661,450	\$557,181,490
Tangibles	94,566,128	144,229,728

Property Taxes

All property in Kentucky is assessed at 100 percent of fair cash value.

Land and buildings are taxed by the state and may be taxed by local jurisdictions. The state rate is \$0.315 per \$100 of assessed valuation.

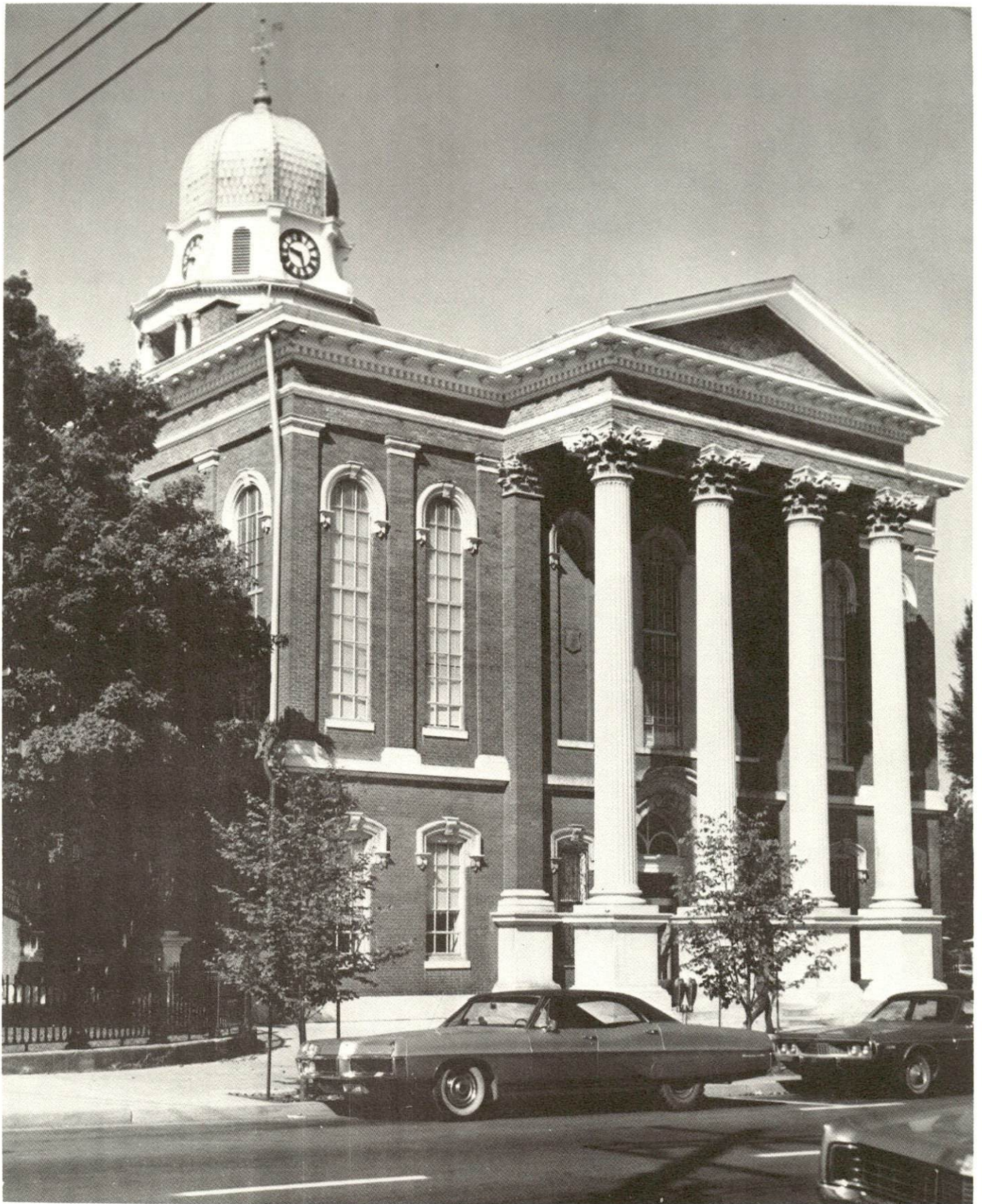
Manufacturing machinery, raw materials inventories, pollution control equipment, and goods in the process of manufacture are not subject to local taxation. The state rate is \$0.15 per \$100.

Other tangible personal property owned by manufacturers (automobiles, trucks, finished goods, office furniture, office equipment) is taxed by the state at \$0.45 per \$100 and may be taxed by local jurisdictions.

Property stored in public warehouses in a transit status is not subject to local taxation. The state rate is only \$0.015 per \$100.

Intangible personal property located in Kentucky (money in hand, shares of stock, notes, bonds, accounts receivable, and other credits) is taxed by the state at \$0.25 per \$100, and is not subject to local taxation.

Private leaseholds in industrial facilities owned by cities or counties and financed by industrial revenue bonds are subject to a state tax of \$0.015 per \$100 of value (essentially the lessee's equity, adjusted for appreciation or depreciation). Local taxation is not permitted.



WARREN COUNTY COURTHOUSE



BOWLING GREEN CITY HALL AND POLICE DEPARTMENT

Combined State and Local Rates Per \$100 Valuation, 1978*
(100% assessment)

	<u>Inside City of Bowling Green</u>	<u>Outside City</u>
1. Land and buildings	\$1.300	\$0.550
2. Mfg. machinery, raw materials, goods in process, pollution control equipment	0.150	0.150
3. Finished goods, office equipment, vehicles, other tangibles	1.435	0.685
4. Intangibles (accounts rec., notes, bonds, etc.)	0.250	0.250
5. Leaseholds in I. R. bond financed plants	0.015	0.015

Utilities Gross Receipts Tax for Schools

A 3 percent tax is levied on utilities receipts for schools in Warren County. Tax is paid by all consumers of utilities as an add-on to the utilities bills. Exempted are receipts from utilities services that are resold and the receipts from the sale of energy or energy producing fuels that exceed 3 percent of the cost of production in manufacturing, processing, mining or refining.

Planning and Zoning

Joint agency - City-County Planning Commission of Warren County
 Zoning enforced - All areas
 Subdivision regulations enforced - All areas
 Local codes enforced - Housing, building, storm water management and house numbering in all areas; flood in Bowling Green and all unincorporated areas of Warren County
 Mandatory state codes enforced - Plumbing, National Fire Protection Association Code, National Building Code (for major buildings and residential construction containing more than 12 bedrooms per building)

*Kentucky Department of Commerce.

Safety

<u>Police</u>	<u>Bowling Green</u>	<u>Warren County</u>
Total staff	73	16
Radio-patrol cars	24	12

Fire

American Insurance Association Fire Rating	6	10
Full-time staff	88	
Volunteers		200
Stations	4 plus 1 under construction	8

Rescue Service

Bowling Green-Warren County Rescue Squad/Civil Defense:

Number of volunteers - 52

Equipment - 12 vehicles including three 6 x 6 specially equipped trucks, two 4 x 4 four-wheel drive vehicles, 1 station wagon, 1 pickup truck, 1 headquarters and communications van, 1 jeep, 1 back-up ambulance, 1 bus, and 1 utility truck; 6 boats and motors; 1 jeep trailer; generators; specialized small equipment; 1 pontoon; 2-way radios in all vehicles

Personnel training - Civil Defense Training, fire fighting, First Aid, Emergency Medical Technician Training, training with the Army Reserves, Radiff training

Refuse Collection and Disposal

	<u>Bowling Green</u>	<u>Warren County</u>
Type service	Franchise*	Private
Fee charged:		
residential	\$3.50 monthly	\$5 monthly
business	Based on volume	Based on volume
Collection frequency:		
residential	Weekly	Weekly
business	On call	As needed
Trash pickup	On call	Weekly
Disposal method	Sanitary landfill	Sanitary landfill

Refuse collection and disposal service is available to manufacturing plants located inside and outside the corporate limits. The fee is based on volume and frequency of collection.

*The city franchises refuse collection and disposal service to private firms.

EDUCATION

Public Schools

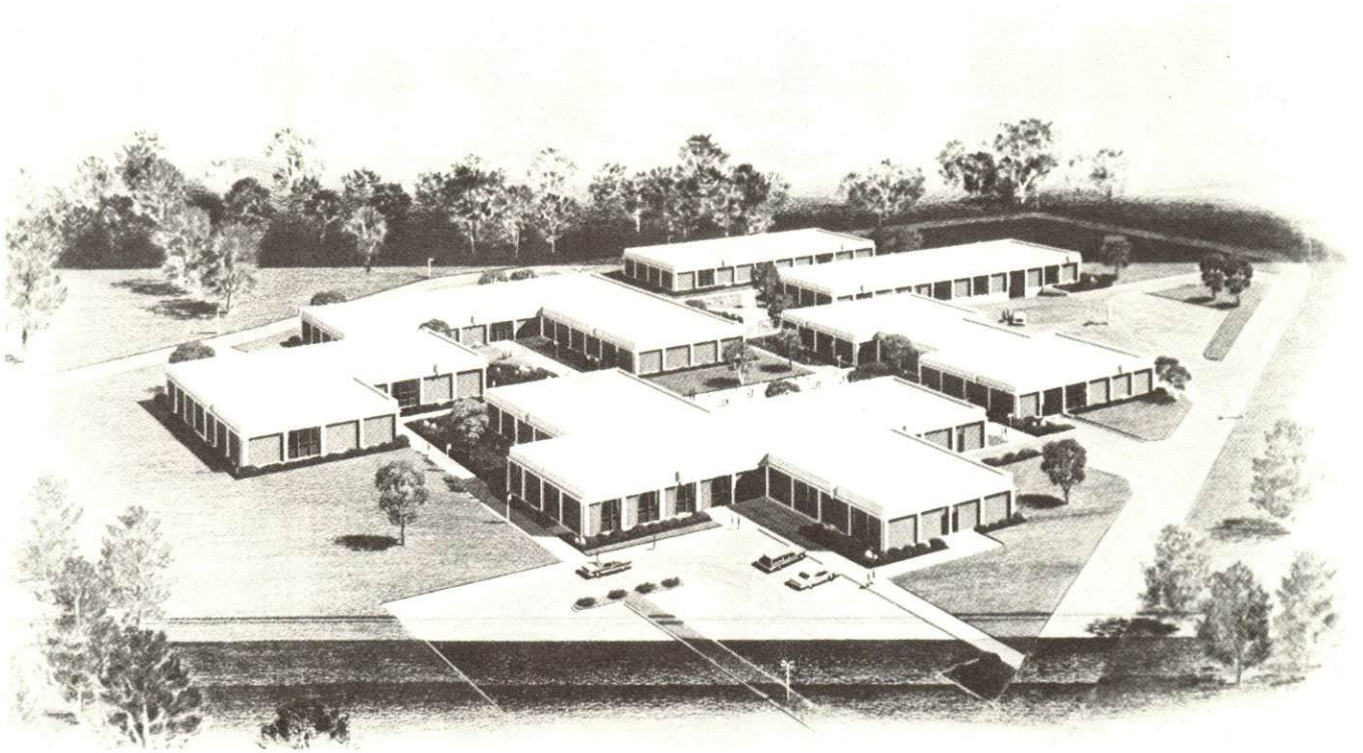
	<u>Bowling Green Independent</u>	<u>Warren County</u>
Total Enrollment (Fall 1978)	3,946	7,727
Elementary	2,221	5,369
Junior High	675	
High School	1,050	2,358
Student-Teacher Ratio	16-1	20-1
Elementary	16-1	22-1
Junior High	16-1	
High School	15-1	16-1
Accreditation	Southern Association of Colleges and Schools (2)	Southern Association of Colleges and Schools
Percent High School Graduates to College	51.0	39.6
Expenditures Per Pupil (1977-78)	\$1,195.33	\$828.72
Bonded Indebtedness, June 30, 1978	\$4,351,000	\$9,439,000

Nonpublic Schools

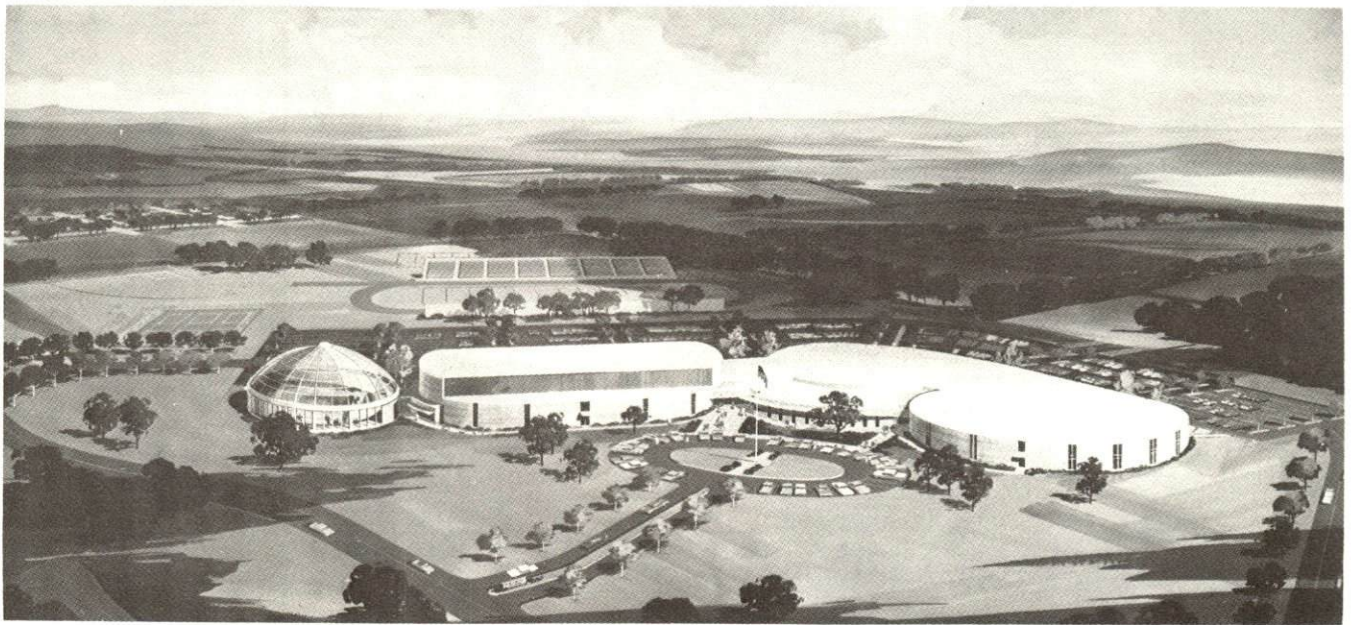
Total Enrollment	715
Elementary	615
High School	100
Student-Teacher Ratio	19-1
Elementary	21-1
High School	11-1



WARREN COUNTY HIGH SCHOOL



BOWLING GREEN STATE VOCATIONAL-TECHNICAL SCHOOL



BOWLING GREEN HIGH SCHOOL



AERIAL VIEW OF WESTERN KENTUCKY UNIVERSITY

Area Colleges and Universities

<u>Name</u>	<u>Location (Miles distant)</u>	<u>Enrollment (Fall, 1978)</u>	<u>Highest Degree Conferred</u>
Western Kentucky University	Bowling Green	13,224	Masters, Ph.D.
Hopkinsville Community College	Hopkinsville (65)	1,022	Associate
Austin Peay State University	Clarksville, Tennessee (63)	5,183	Masters
Belmont College	Nashville, Tennessee (65)	1,514	Baccalaureate
David Lipscomb	Nashville, Tennessee (65)	2,196	Baccalaureate
Fisk University	Nashville, Tennessee (65)	1,149	Masters
George Peabody College for Teachers	Nashville, Tennessee (65)	2,015	Masters, Ph.D.
Meharry Medical College	Nashville, Tennessee (65)	1,038	M.S., M.D., D.D.S.
Trevecca Nazarene	Nashville, Tennessee (65)	1,344	Baccalaureate
Tennessee State University	Nashville, Tennessee (65)	5,358	Masters
Vanderbilt University	Nashville, Tennessee (65)	7,373	Academic and Professional

Located on a hill overlooking the city of Bowling Green, the Western Kentucky University campus is acclaimed as one of the most beautiful in the nation. There are 66 major buildings on the approximately 200-acre main campus, with another 785 acres on the University Farm.

Western's undergraduate division provides four-year programs leading to the Bachelor of Arts, the Bachelor of Fine Arts, the Bachelor of Science, the Bachelor of Science in Nursing and the Bachelor of Music Degrees. Fifty-seven academic majors, sixty-three academic minors, and forty-five areas of concentration are available. A number of professional and pre-professional curricula provide additional options. Thirty-six associate degree programs are offered leading to the Associate of Arts degree, Associate of Science degree and Associate of Liberal Studies degree.

The Graduate College offers the Master of Arts, Master of Arts in Education, Master of Business Administration, Master of Science, Master of Music, Master of Public Service and the Master of Science in Engineering Physics. Western also offers the Specialist Degree and Rank I and II programs. Joint doctoral degree programs are offered in cooperation with the University of Kentucky and cooperative doctoral degree programs with the University of Louisville.

Vocational Schools

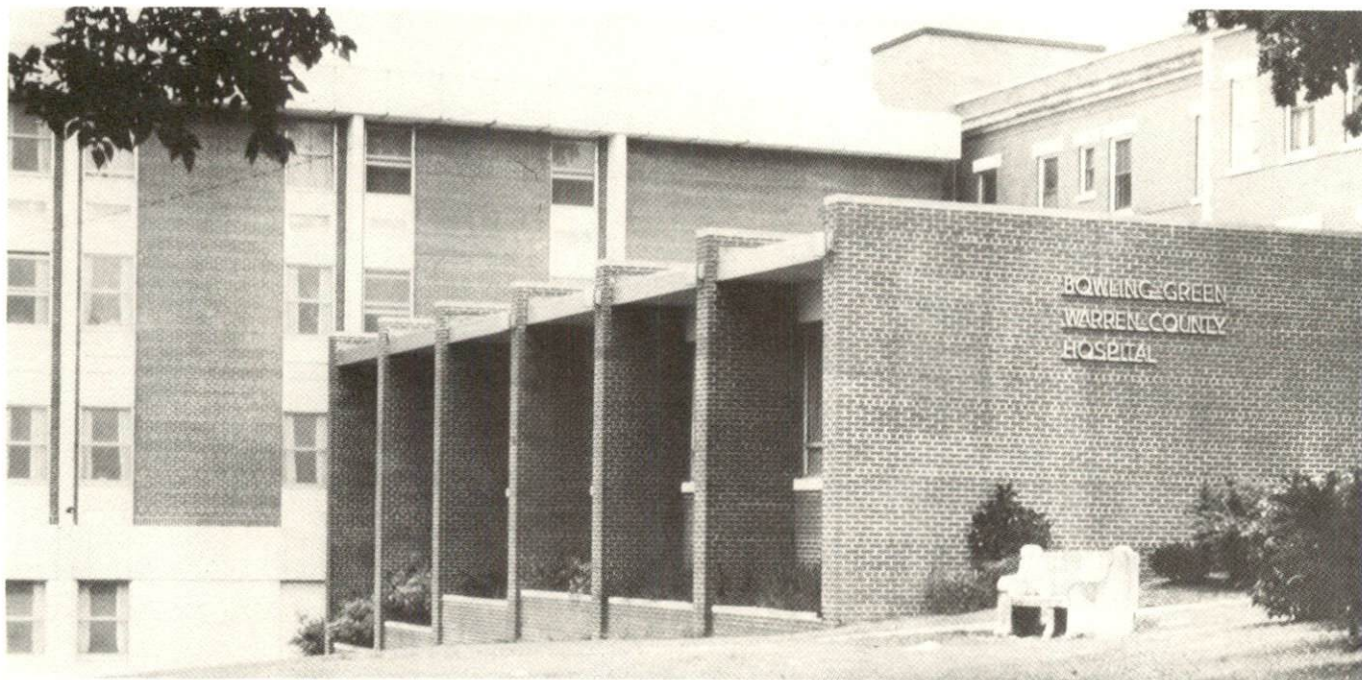
	<u>Nearest State School</u>
Location	Bowling Green State Vocational- Technical School
Curriculum	Bowling Green Agriculture Adult Agriculture Business and Office Accounting Clerical Secretarial Consumer and Home Economics Commercial Foods Distributive Education Health and Personal Service Occupations Dental Assistant Health Careers Nurse Assistant (Adult) Practical Nurse Respiratory Therapy Surgical Technician Industrial Education Auto Body Repair Auto Mechanics Carpentry Civil Highway Technology Drafting Electronics (Technology) Electronics Servicing Occupations (i.e. Radio and TV Repair) Graphic Arts (Printing) Industrial Electricity Machine Shop Masonry Refrigeration & Air Conditioning Small Engine Repair Tool and Die Making Welding

Arrangements can be made to provide training in the specific production skills required by an industrial plant. Instruction may be conducted either in the vocational school or in the industrial plant, depending upon the desire arrangement and the availability of special equipment.

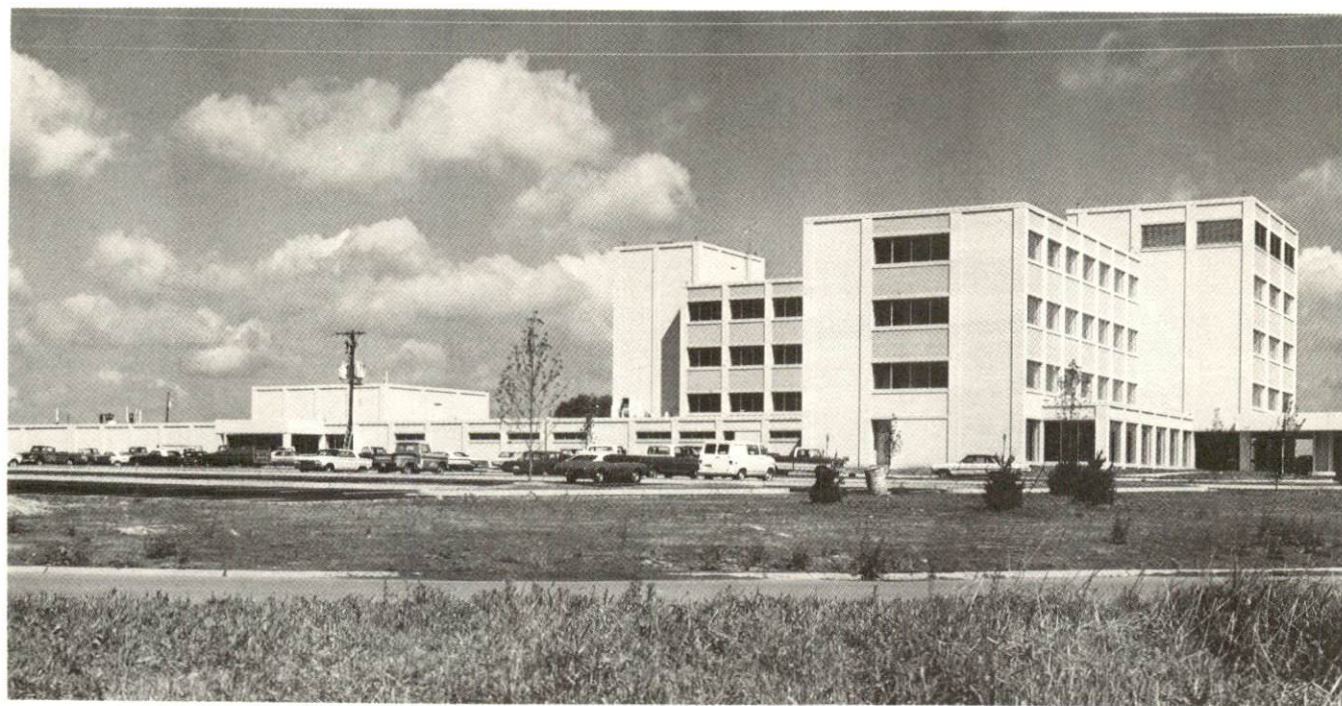
In addition to the Bowling Green State Vocational-Technical School, three private vocational schools are located in Bowling Green.

Bowling Green Business College, accredited by the Association of Independent Colleges and Schools, offers nine programs through six academic departments, including Secretarial Science, Accounting and Finance, Medical Secretarial Science and Business Administration.

Lois-Glyn School of Beauty Culture offers training in Cosmetology. Bowling Green Beauty School offers the training necessary to obtain a Beautician's license.



BOWLING GREEN-WARREN COUNTY HOSPITAL



GREENVIEW HOSPITAL

HEALTH

Local Medical Personnel

Physicians - 77
Dentists - 35

Hospitals

<u>General Hospitals</u>	<u>Location</u>	<u>Beds</u>
Bowling Green-Warren County Hospital*	Bowling Green	298 including 15 psychiatric and 23 extended care beds
Greenview Hospital	Bowling Green	157

Bowling Green-Warren County Hospital

General hospital facilities - 5 operating rooms, 6 emergency rooms, 4-bed coronary care unit, 6-bed intensive care unit, physical therapy department, respiratory therapy department, 15-bed psychiatric unit, laboratory and pathology, electrocardiograph, electroencephalograph, computerized tomography, xeroradiography, neonatal intensive care unit, X-ray facilities, ambulance service, social services, home health agency, pharmacy, coffee shop, ultrasound

Medical staff - 85 physicians, 115 registered nurses, and 800 other employees

Greenview Hospital

General hospital facilities - 4 operating rooms, emergency facilities, 8-bed coronary-intensive care unit, physical therapy department, pathological laboratory, electroencephalography, nuclear medicine, diagnostic department, inhalation therapy, X-ray department, outpatient department, pharmacy, coffee shop

Medical staff - 82 physicians, 70 registered nurses, 20 licensed practical nurses and 200 other employees

*A new \$15 million 300-bed Bowling Green-Warren County Hospital is under construction and expected to be completed by September 1979. The new hospital will have 8 operating rooms, 16 emergency rooms, a 12-bed coronary care unit and a 12-bed intensive care unit. The new hospital will have nearly three times as much space as the old facility and will be the regional medical center for a 10-county area.

Other Medical Facilities

Barren River Mental Health-Mental Retardation Board, Inc.
Barren River Comprehensive Care Center
Comprehensive Family Services, Inc.
Commission for Handicapped Children
Lion's Handicapped School

Ambulance Service

Name - Bowling Green-Warren County Ambulance Service
Staff - 11 emergency medical technicians, 9 paramedics
Service - 24-hour service daily
Equipment - 5 fully equipped ambulances

Public Health

Facility - Bowling Green-Warren County Health Department
Staff - Full time: 1 physician, 1 administrator, 1 assistant administrator, 1 nursing director, 23 registered nurses, 3 licensed practical nurses, 5 environmental health technicians, 1 venereal disease inspector (state), 1 X-ray technician, 1 laboratory technician, 19 clerks, 1 clerk registrar, 1 milk inspector (state), 5 general clinicians, 5 social workers, 1 health educator, 1 nutritionist, 4 community health workers
Part time: 1 dentist, 1 dental hygienist, 4 pediatric clinicians



BOWLING GREEN PUBLIC LIBRARY

OTHER LOCAL FACILITIES

Communications

Telephone - South Central Bell Telephone Company

Services - Full line of telephone communication services

Telegraph - Western Union

Services - Counter service, telephone and taxi delivery services, toll free number for mailgrams and international and telegram messages

Postal - U. S. Post Office

Class - First

Mail received - 5 times daily

Mail dispatched - 4 times daily

Newspapers -

Daily except Saturday

and circulation - Park City Daily News - Daily, 17,979;

Sunday, 20,665

Other papers

received from - Louisville, Kentucky, and Nashville, Tennessee

Radio - WBGN-AM; WDNS-FM; WKCT-AM; WLBJ AM & FM

Other stations received from - Louisville, Kentucky, and Nashville, Tennessee

Television - WBKO Channel 13, ABC affiliate

Reception from - Bowling Green and Louisville, Kentucky; Nashville, Tennessee

Kentucky Educational

Television - WKGB-KET Channel 53, Bowling Green transmitter

Library Services

Public library - Bowling Green Public Library

Size collection - 85,368 items

Circulation, 1977-78 - 177,241 items

Services - Two bookmobiles, fiction and non-fiction books, map file, telephone directories, large print books, periodicals and newspapers, records, framed prints, films, stock market guides, audio-visual equipment loan, business guides, tax information, reference help, interlibrary loan, information file, occupational file, automobile fix-up manuals, picture file, hospital libraries, book-by-mail for shut-ins, talking book service for the blind and physically handicapped, informational service for 23 counties, DAR genealogical and historical library special collections, public copy machine, public typewriter, Notary Public Services, children's story hour, art gallery with monthly art exhibits, lecture series, music programs, film shows, conference and public meeting facilities, microfilm reader/printer, Western Kentucky University card catalog on microfiche, college and university catalogs on microfiche, daily newspaper on microfilm, special speakers available through library, puppet shows

University library - Six libraries and resource centers on the Western Kentucky University Campus
 Size collection - 750,000 volumes
 Special collections - The Kentucky Library houses study and research collections relating to Kentucky life and history. The Kentucky Museum contains historical, anthropological, biological and artistic objects and specimens relating to the heritage and environment of Kentucky and the contiguous states
 Services - Recordings, documents, newspapers, magazines, clippings, scrapbooks, tapes, sheet music, museum programs, duplication, interlibrary loan, complete catalog of holdings available for nominal fee

Religious Institutions

Warren County has more than 150 churches representing 30 different denominations.

The nearest synagogues are located in Nashville, Tennessee, 65 miles south. Congregations are Sherith Israel (orthodox), Ohabai Shalom (reform), and West End Synagogue (conservative)

Financial Institutions

<u>Banks</u>	<u>Assets</u>	<u>Deposits</u>	<u>Statement Date</u>
American National Bank	\$102,051,176.71	\$92,314,375.25	6/30/78
Bowling Green Bank and Trust Company	87,375,962.90	46,794,140.42	6/30/78
Citizens National Bank	105,868,718.30	97,111,215.20	6/30/78
<u>Savings and Loan Associations</u>	<u>Assets</u>	<u>Savings Accounts</u>	<u>Statement Date</u>
Fidelity Federal Savings and Loan Association	\$ 33,377,319.45	\$30,129,142.81	6/30/78
First Federal Savings and Loan Association	102,790,555.40	90,778,999.37	6/30/78

Hotels and Motels

Total number - 30
 Total units - 1,713



CITIZENS NATIONAL BANK



BOWLING GREEN BANK & TRUST COMPANY



AMERICAN NATIONAL BANK & TRUST COMPANY



FIDELITY FEDERAL SAVINGS & LOAN ASSOCIATION

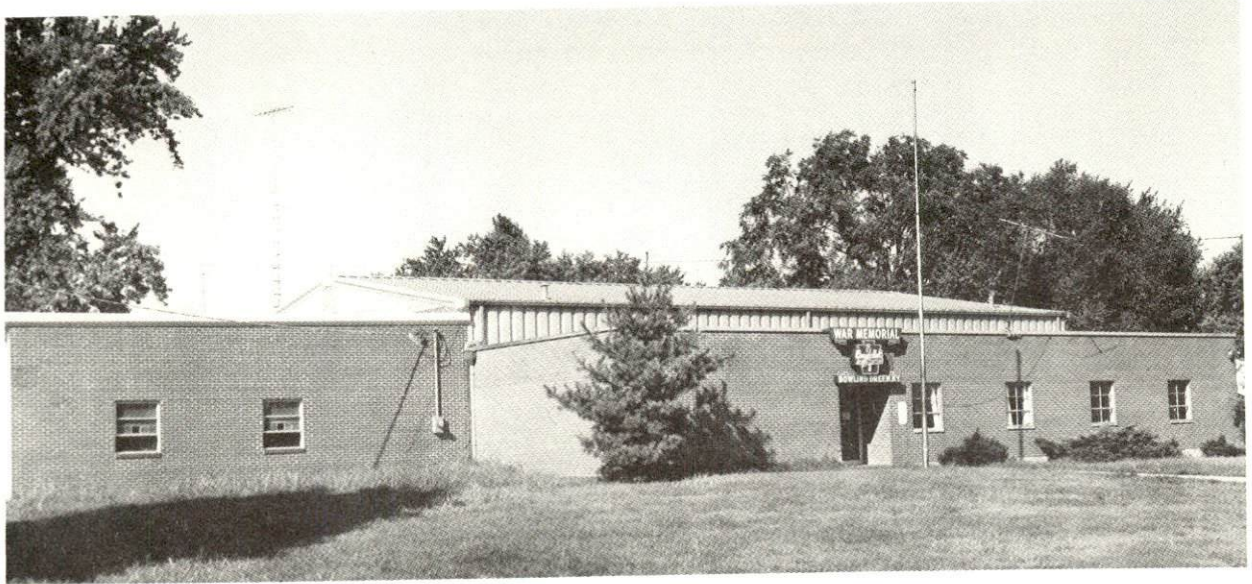


FIRST FEDERAL SAVINGS AND LOAN ASSOCIATION

Clubs and Organizations

Alpha Theta
Altrusa Club
American Business Women's
Association
American Legion
American Legion Auxiliary
Association for Retarded Citizens
Bar Association
Beautification Commission
Big Brothers & Big Sisters
Bluegrass Toastmasters
Board of Realtors
Bowling Green-Warren County
Chamber of Commerce
Boy Scouts of America
Boys Club
Business and Professional Women
Cardinal Council of Federated
Garden Clubs
Circles Square Dance Club
City Hostess
Civitan Club
Community Greeters
Current Events Club
Daughters of American Colonists
Daughters of the American
Revolution
Dental Assistants Association
Dental Association
Dental Hygienist Association
Eastern Star
Elk's Club
Eloise B. Houchens Center
for Women
Farm Bureau
Farm Bureau Women
4-H Leaders Council
Fraternal Order of Police
Garden Club
Girl Scouts Board
Girl Scouts of America
HANDS Organization
Historical Society
Home Economist in Homemaking
Home Economists
Homebuilders Association
Independent Insurance Agents
Jaycee-Ettes
Jaycees
Junior Woman's Club
Kentucky Colonel Amateur Radio
Society
Kentucky Telephone Pioneers -
Pennyrile Council
Kiwanis Club
Landmark Association
Lioness Club
Lions Club
Masonic Lodge
Medical Society
Ministerial Association
Moose Club
National Association for the
Advancement of Colored People
National Association of Accountants
National Association of Insurance
Women
National Association of Retired
Civil Employees
National Secretaries Association
Odd Fellows Lodge
Omicron Delta Kappa
Optimist Club
Opti-Mrs. Club
Overeaters Anonymous
Parents Without Partners
Past Noble Grands of Rebeccahs
P E O Sisterhood
Phi Eta Sigma
Phi Upsilon Omicron Alumni
Rainbow Assembly
Rebeccahs
Retired Officers Association
Rose Society
Rotary
Saddle Club
Scottish Rite
Senior Citizen Club
Shrine Club
Sons of the American Revolution
Southern Geneological Society
Southern Kentucky Guild of Artists
and Craftsmen, Inc.
Southern Kentucky Model Area Club
Sweet Adelines
Tank Town Twirlers
Transportation Association

(Contd.)



WAR MEMORIAL BOYS CLUB



DELAFIELD GIRLS CLUB

United Way
Veterans of World War I
Veterans of World War I Auxiliary
Veterans of Foreign Wars
Veterans of Foreign Wars Ladies
Auxiliary
Weight Watchers
Welcome Wagon
Western Buckaroos Square Dance
Club
Western Kentucky University
Faculty Wives Club
Woman's Club
Woman's Political Caucus

RECREATION

Local

Public recreational facilities in Bowling Green include 18 public parks with 21 tennis courts, two 9-hole golf courses, 2 swimming pools and 13 ballfields. There are also numerous basketball courts, playgrounds, and picnic and shelter areas in the parks. Various organized recreational programs ranging from bridge to basketball are conducted by the Bowling Green Parks and Recreation Department.

Other facilities open to the public include five movie theatres, one drive-in theatre, and Beech Bend Park. Beech Bend features a swimming pool, small zoo, an amusement park, stage entertainment, horseback riding, restaurants, playgrounds and 6,500 campsites. Beech Bend International Raceway, an NHRA sanctioned track, hosts several national drag racing championships.

Two private country clubs are located in Bowling Green - each has an 18-hole golf course, swimming pools, and tennis courts. Other private facilities include two private swim clubs, a racquet club and a spa.

Western Kentucky University is the focal point for many cultural and educational activities. Hardin Planetarium, the largest in the state, is located at the university. The Kentucky Building houses an outstanding collection of materials on the history of Kentucky and its contiguous states. Lecture series and university drama and music productions are popular attractions. The art gallery in the Ivan Wilson Center for Fine Arts has outstanding revolving exhibits.

Hobson House, used as a Confederate arsenal during the Civil War, is a popular historical attraction. Completely restored, the house is open to visitors and the grounds are used for special community activities.

Area (Within 55 miles)

Bowling Green is located near Kentucky's famous "Cave Country." Mammoth Cave National Park, about 30 miles northeast of the city by Interstate, features the world's largest network of cavern corridors, over 180 miles in length, located beneath the park's 51,000 acres which provide a beautiful wildlife preserve filled with nature trails and overlooks. Other popular attractions at the park include boat trips on the Green River and hourly audiovisual presentations at the Visitor's Center. Hotel and motel rooms, cottages, restaurants and are available. Other caves in the area include Crystal Onyx Cave, Diamond Caverns, Jesse James Cave, Hundred Dome Cave, Slave Cave, and Mammoth Onyx Cave.



INDIAN HILLS COUNTRY CLUB



BOWLING GREEN COUNTRY CLUB



HOBSON HOUSE

Many resorts are located in and around the cave area. A professional repertory theatre performs at Horse Cave during the summer months.

Bowling Green is located within an hour's drive of three large lakes - Nolin River Lake, Lake Malone and Barren River Lake. Barren River Lake State Resort Park offers a 51-room lodge, cottages, a restaurant, 101 campsites, a swimming pool, riding stables, nature trails, a 9-hole par 3 golf course and fishing and boating on the 10,000-acre lake. Located adjacent to the lake is the Barren Lake Wildlife Management Area - a 5,000-acre hunting and fishing preserve maintained by the state. Lake Malone State Park offers boating, fishing and swimming on the 826-acre lake and camping and picnicking. Camping and fishing are featured at Nolin River Lake.

Nearby historical points of interest include the Jefferson Davis State Shrine, site of the birthplace of the only president of the Confederate States of America; South Union, site of the last Shaker community in Kentucky; and Baker Hill, a famous home (now the site of a restaurant) which was occupied by both Confederate and Federal troops during the Civil War.

COMMUNITY IMPROVEMENTS

Industrial and Commercial

New industries which located in Bowling Green during 1978 are the Bowling Green Division of Green Bay Packaging, Inc., which employs 30 and produces corrugated packaging materials, and Rad Services, Inc., which employs approximately 25 and produces zinc pellets.

Several existing industries have recently expanded facilities.

The Holley Carburetor Division of Colt Industries, Inc., is in the process of building a third facility in Bowling Green. The new 140,000-square foot carburetor assembly and testing plant is expected to employ 400 persons.

The Union Underwear Company is in the process of locating its World Headquarters from New York to Bowling Green in a new facility now under construction.

Western Kraft Paper Group, which recently bought out Corco, Inc., is building a new 135,000-square foot production facility to replace its old plant. The company expects to employ approximately 50 new employees and will invest \$4.5 million in the new facility.

Atomaster Division of Koehring Company recently added 44,000-square feet to its production facilities. The addition involved an investment of \$1.5 million and 125 new employees have been added to the payroll. Plans call for the addition of 7,000 square feet during 1979.

Continental Poly, Inc., is planning to invest \$54,000 in a 6,500-square foot addition to its facilities and will employ 10 new employees.

The Lord Corporation is investing about \$6 million in new equipment and adding a 20,000-square foot addition to its production facilities. About 75 new workers will be hired as a result of the expansion.

Page Welding Division of American Chain and Cable Company, Inc., now has its divisional headquarters in Bowling Green. The company recently invested \$1.1 million in new equipment and renovation of an 83,000-square foot building. The expansion created 25 new jobs.

Pan American Mills, Inc., is in the process of adding \$50,000 in new equipment which will involve the addition of several new employees. Plans are being made to add additional grain storage during 1979.

Exceptional Industries recently moved into a new building. The building provides an additional 12,000 square feet and will involve the employment of 25 to 35 new workers. An additional expansion of 4,000 square feet is planned for 1979.

Commercial activity is flourishing in Bowling Green.

A 60-store mall is presently being developed. The mall will accommodate several major department stores and is scheduled to open in 1979.

Land has been purchased adjacent to the Bowling Green Mall to make room for the construction of two more stores.

Plans are being made to build a new 200-room luxury hotel and convention center in downtown Bowling Green. Grant applications are being prepared for the convention center and plans call for a private developer to build the hotel. The convention center complex will also include new facilities for the Bowling Green-Warren County Chamber of Commerce.

Utilities

Water:

Construction is under way on an expansion and renovation of the municipal water treatment plant. The treatment capacity of the plant is being increased to 15,000,000 gpd with a maximum filtering capacity of 22,000,000 gpd. The water treatment process is being converted to mixed media high rate filtration. The expansion and renovation is expected to be completed by August 1979.

Construction of a new booster station for the municipal system, a 1,000,000-gallon elevated water storage tank, and a 16-inch transmission main is scheduled to begin in the spring of 1979.

The Warren County Water District has increased its storage capacity by 325,000 gallons and is planning to add 50 miles of 4, 6, 8, and 10-inch water mains.

Sewer:

Construction will begin in the spring of 1979 on the Jennings Creek interceptor, the Nashville Road interceptor and the Scottsville Road pump station. The two interceptor projects will involve construction of gravity sewers, pump stations, and force mains and will extend service to previously unserved areas. The Scottsville Road pump station is being installed to lessen the load now handled by another pump station. Correction of infiltration and inflow problems determined by a Sewer System Evaluation Survey is scheduled to begin in spring of 1979.

Transportation

Construction has begun on a new East-West Connector. Fairview and Sixth Avenues will be realigned and widened and a new underpass will be built under the L & N Railroad and Sixth Avenue.

Construction of a North-South Connector is planned. Kentucky and Adams Streets will be realigned and widened and a new bridge to 31-W will be built.

Construction is also under way on a project to extend Campbell Lane to Lovers Lane thereby creating a beltline around 60 percent of the southern portion of Bowling Green.

Other highway improvements include realigning Chestnut Street and extending Pioneer Drive to the new Holley Carburetor plant.

The Bowling Green-Warren County Airport has recently updated its master plan and completed a land use plan for the surrounding area. The plan recommends purchasing additional land, construction of an apron, and expanding terminal space.

Recreation

Construction of the county owned Three Springs Park will begin soon. The park will contain over 100 acres and will include four baseball/softball/football fields with bleachers, a 9-hole par-3 golf course, an indoor recreation building, eight tennis courts, eight handball courts, picnic shelters and a fishing lake.

The City of Bowling Green is planning to purchase land to develop two neighborhood parks. Construction of two new lighted tennis courts, lighted baseball fields, and street and parking improvements is underway at Lampkin Park. The City is in the process of acquiring twenty acres for passive recreation on the south side of town.

The City has just completed a Master Plan for Parks which includes an inventory of existing parks, determines standards for parks, analyzes the existing parks comparing them to the standards developed, makes proposals for existing and future parks, and recommends methods of implementing the proposals made in the study.

Education

The Warren County School System completed construction of a new \$1,540,000 elementary school in the fall of 1978. Additions to three elementary schools costing a total of \$1,356,000 are under way. Design is under way for approximately \$1,700,000 worth of additions to two elementary schools and a high school.

The Bowling Green Independent School System has begun special classes for students with IQs of 125 and over. Renovation of a junior high school is planned.

The Continuing Education Center at Western Kentucky University opened in the fall of 1977. The center can house about 190 and hosts short courses for personnel in business, industry and banking.

A 45,000-square foot addition to the Kentucky Museum at Western Kentucky University will be completed early in 1979. The museum houses one of the best collections of library materials and museum pieces available in Kentuckiana.

Western Kentucky University's Agricultural Exposition Center, scheduled to open in the summer of 1979, will house facilities for meetings, instruction, and livestock exhibition.

Western Kentucky University has applied for a non-commercial license to operate an FM radio station.

The Bowling Green State Vocational-Technical School is in the process of building two new buildings at a cost of approximately \$2.2 million. The buildings will house CETA programs formerly located in rented buildings around the City, expanded facilities for the Business and Office and Building Trades programs, a learning center, and a vocational education regional office.

Potter Orphan Home and School, which had previously offered classes to grades 4 through 8 only, now offers classes for grades 1 through 12. A six-classroom addition was recently constructed to accommodate the new classes.

Health and Safety

A new \$15 million 300-bed Bowling Green-Warren County Hospital is under construction and expected to be completed by September 1979. The new hospital will have 8 operating rooms, 16 emergency rooms, a 12-bed coronary care unit and a 12-bed intensive care unit. The new hospital will have nearly three times as much space as the old facility and will be the regional medical center for a 10-county area.

The Bowling Green-Warren County Health Department has recently built a \$361,000 annex to house all clinical facilities. The old building will undergo a renovation expected to cost about \$80,000 and will house administrative, environmental and planning offices.

A new landfill site has been acquired for the city of Bowling Green in Butler County and a transfer station for trash compaction is under construction.

In its continuing program of upgrading fire protection, the city plans to install additional fire hydrants and 1.7 miles of water lines during the next several years.

Construction of a new fire department headquarters and a new substation will begin in the spring of 1979.

Other Community Programs for Improvement

A multimillion dollar Urban-Renewal project to clear three areas which will be used for commercial businesses, light industry and highways is under way. The project is funded by HUD.

Construction of 100 two- and three-bedroom single family units is under way.

Conversion of an existing apartment building into 187 efficiency units for the elderly has recently been completed.

The Bowling Green-Warren County Chamber of Commerce has purchased land adjoining its office and is presently using the land for parking facilities.