

1993

Industrial Resources: Webster County

Kentucky Library Research Collections
Western Kentucky University, spcol@wku.edu

Follow this and additional works at: https://digitalcommons.wku.edu/webster_cty



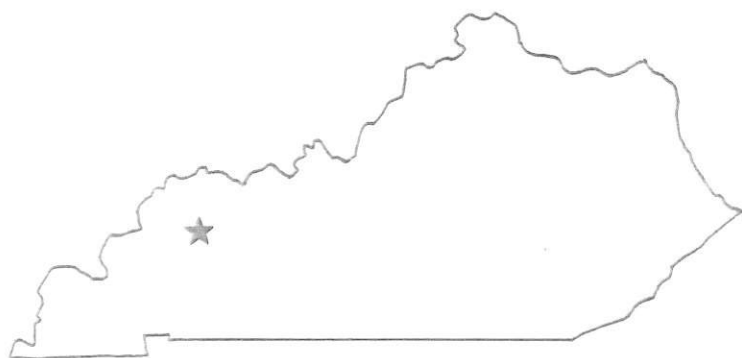
Part of the [Business Administration, Management, and Operations Commons](#), [Growth and Development Commons](#), and the [Infrastructure Commons](#)

Recommended Citation

Kentucky Library Research Collections, "Industrial Resources: Webster County" (1993). *Webster County*. Paper 5.
https://digitalcommons.wku.edu/webster_cty/5

This Report is brought to you for free and open access by TopSCHOLAR®. It has been accepted for inclusion in Webster County by an authorized administrator of TopSCHOLAR®. For more information, please contact topscholar@wku.edu.

Webster County



KENTUCKY

RESOURCES FOR ECONOMIC DEVELOPMENT

WEBSTER COUNTY, KENTUCKY

Prepared by
The Kentucky Cabinet for Economic Development
Division of Research
in cooperation with
Webster County Economic Development Corporation

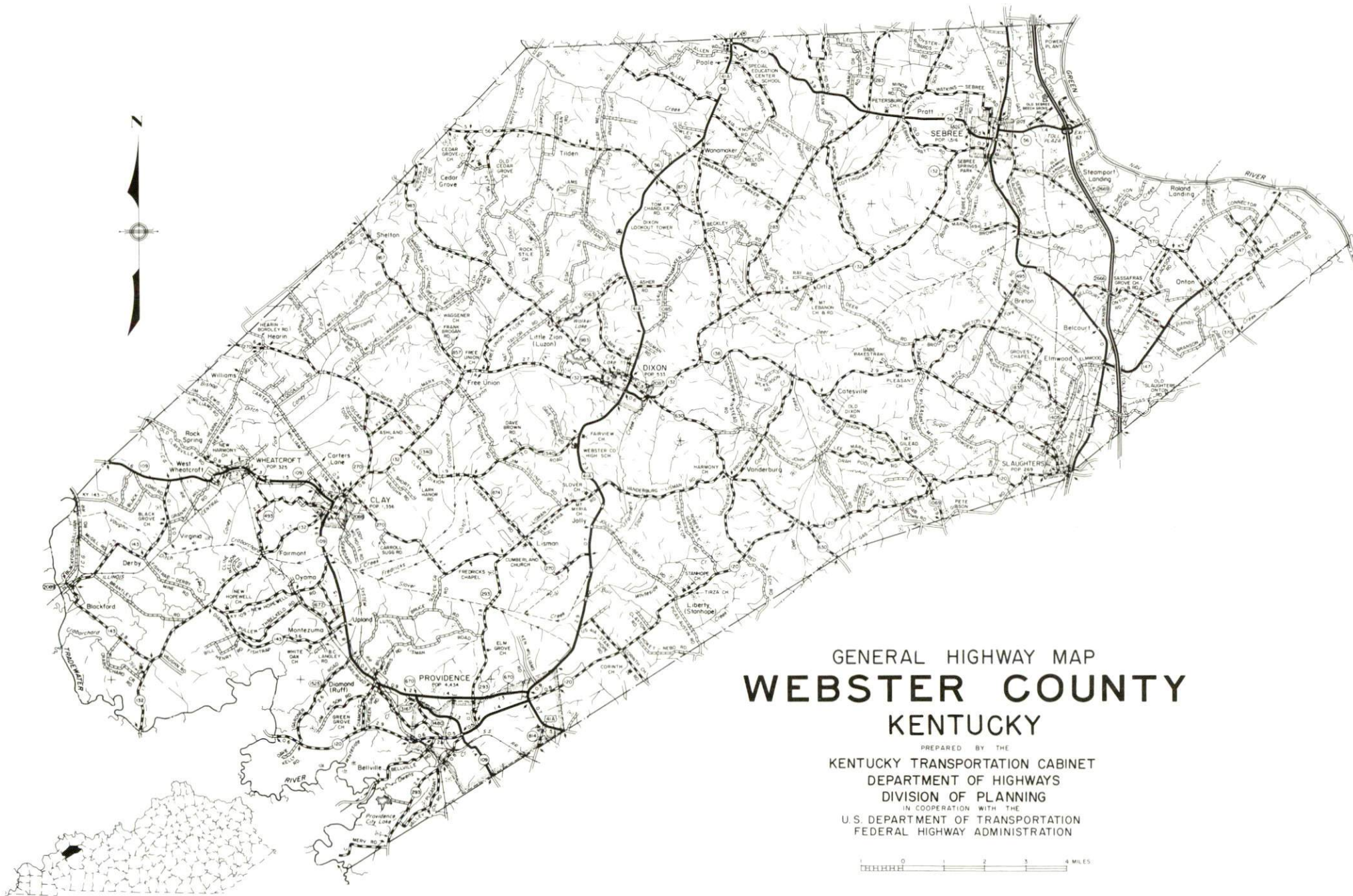
1993

Division Director - Pamela K. Riley; program manager - Keith Roberts; research - Barry K. Holder, Jr.; clerical - Wanda Sharp; graphics - Robert Owens, Pat Coleman; cartography - Edwin Scott, Dave Clark. Cost of printing paid from state funds.

TABLE OF CONTENTS

<u>Chapter</u>	<u>Page</u>
WEBSTER COUNTY, KENTUCKY - A RESOURCE PROFILE	1
THE LABOR MARKET STATISTICS	2
Labor Market Area Map.....	2
Population	3
Population Projections	3
Estimated Labor Supply	3
Labor Force Characteristics of Residents, 1991	4
Selected Components of Nonagricultural Employment, by Place of Work, 1991	5
Per Capita Personal Income	6
Average Placement Wages	7
Average Weekly Wages of Workers Covered by Unemployment Insurance 1991 - Bar Chart	8
Average Weekly Wages by Industry, by Place of Work, 1991	9
EXISTING INDUSTRY	10
Webster County Manufacturing Firms, Their Products and Employment	10
Labor Organizations in Manufacturing Firms.....	11
Selected Industrial Services	12
TRANSPORTATION	13
Highways	13
Truck Service	13
Selected Market Location Map.....	14
Rail	15
Air	15
Water	15
UTILITIES	16
Electricity	16
Natural Gas	17
Public Water Supply	17
Sewerage	18
CLIMATE	20

<u>Chapter</u>	<u>Page</u>
LOCAL GOVERNMENT	21
Structure.....	21
Planning and Zoning	21
Local Fees and Licenses.....	21
State and Local Property Taxes	22
EDUCATION	23
Public Schools	23
Area Colleges and Universities	23
Vocational Training.....	24
OTHER LOCAL FACILITIES	26
Local Medical Personnel.....	26
Hospitals.....	26
Other Medical Facilities and Services	26
Banks and Savings & Loan Associations	26
Newspapers	26
Telephone Service	26
RECREATION	27
COMMUNITY IMPROVEMENTS	28



GENERAL HIGHWAY MAP
WEBSTER COUNTY
KENTUCKY

PREPARED BY THE
KENTUCKY TRANSPORTATION CABINET
DEPARTMENT OF HIGHWAYS
DIVISION OF PLANNING
IN COOPERATION WITH THE
U.S. DEPARTMENT OF TRANSPORTATION
FEDERAL HIGHWAY ADMINISTRATION

0 1 2 3 4 MILES

WEBSTER COUNTY, KENTUCKY - A RESOURCE PROFILE

Webster County, with a land area of 334 square miles, is located within the Western Kentucky Coal Field region. The Green River forms the northeastern boundary of the county, while the Tradewater River forms the county's southwestern boundary. Webster County had a 1990 population of 13,955.

Dixon, the county seat of Webster County, had a 1990 population of 552. Dixon is located 128 miles northwest of Nashville, Tennessee; 148 miles southwest of Louisville, Kentucky; and 203 miles southeast of St. Louis, Missouri. Clay, with a 1990 population of 1,173, is located in the western portion of Webster County. Providence, the largest city in the county, is located in the southwestern area of the county. Providence had a 1990 population of 4,123. Sebree, located in the northeastern portion of Webster County near the Green River, had a 1990 population of 1,510. Slaughters had a 1990 population of 235, while Wheatcroft had a population of 206 for the same year.

The Economic Framework - The total number of Webster County residents employed in 1991 averaged 5,616. Manufacturing firms in the county reported 795 employees; wholesale and retail trade provided 658 jobs; 336 people were employed in service occupations; state and local government accounted for 637 employees; and 965 people were employed by mining and quarrying operations.

Labor Supply - There is a current estimated labor supply of 19,651 persons available for industrial jobs in the labor market area. In addition, from 1993 through 1997, 11,410 young persons in the area will become 18 years of age and potentially available for industrial jobs.

Transportation - Major highways serving Webster County include the Pennyriple Parkway, U.S. 41, U.S. 41 Alternate, and Kentucky 109. Twenty-nine trucking companies serve Webster County. CSX Transportation provides rail service to Providence and Sebree while Tradewater Railway serves Providence. The Evansville Regional Airport, 39 miles north of Dixon, provides the nearest scheduled commercial airline service. The Providence-Webster County Airport maintains a 3,800-foot paved runway designed to accommodate small aircraft.

Power and Fuel - Providence Municipal Utilities provides electric service to Providence. Kentucky Utilities Company provides electric power to Clay, Dixon, Sebree, and parts of Webster County. Webster County is also served by Green River Electric Corporation and Henderson-Union Rural Electric Cooperative Corporation. Natural gas service is provided to Clay by Clay Gas System, to Providence by Providence Municipal Utilities, and to Sebree by Western Kentucky Gas Company.

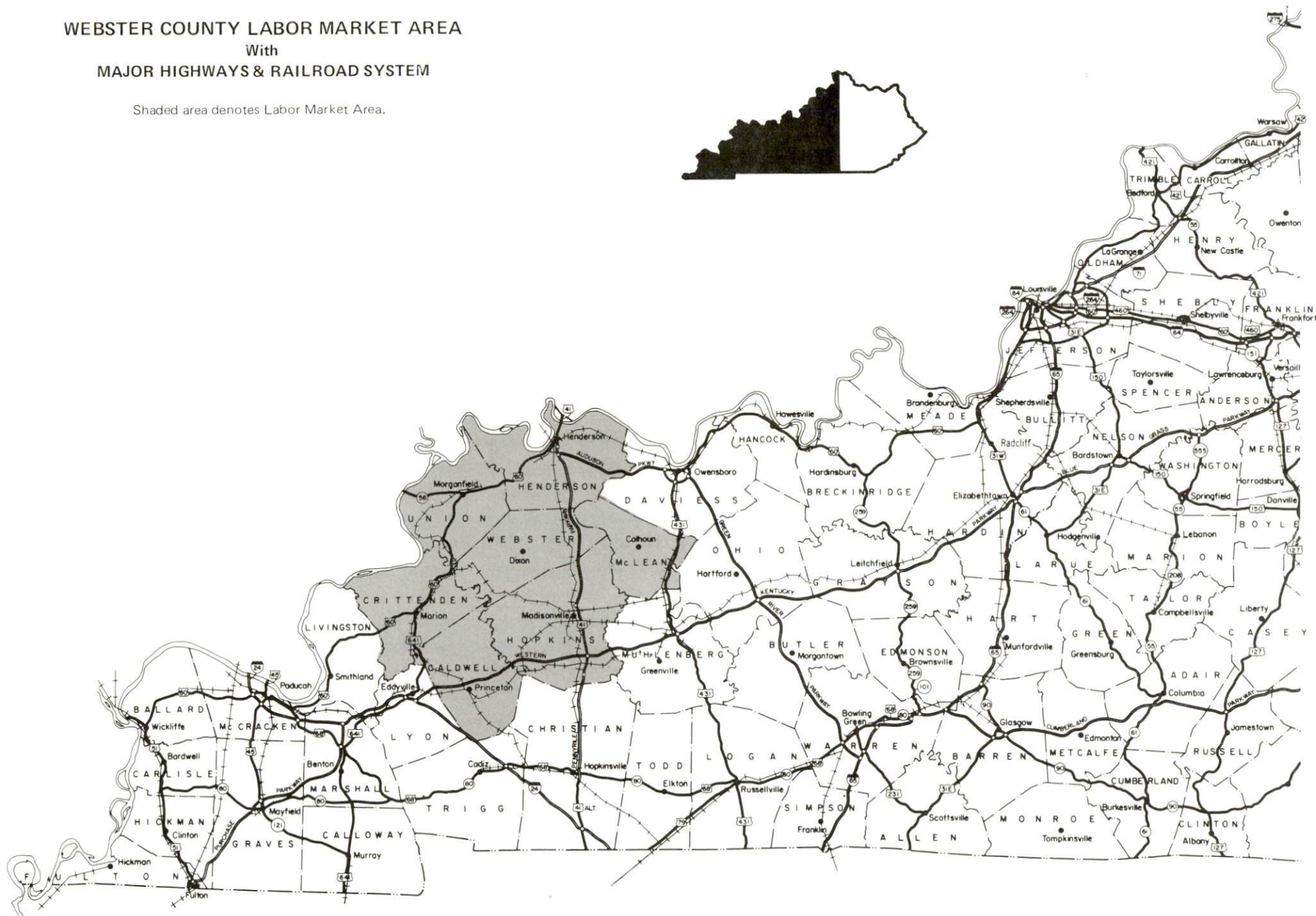
Education - The Providence Independent School System provides primary and secondary education to Providence. Clay, Dixon, Sebree, and unincorporated Webster County are served by the Webster County School System. Eight institutions of higher learning are located within 60 miles of Dixon. The Webster County Area Vocational Education Center, in Dixon; the Madisonville State Vocational-Technical School, and the Madisonville Health Technology Center both in Madisonville, 24 miles southeast of Dixon, provide vocational training facilities for the area.

WEBSTER COUNTY LABOR MARKET AREA

With

MAJOR HIGHWAYS & RAILROAD SYSTEM

Shaded area denotes Labor Market Area.



LABOR MARKET STATISTICS

The Webster County Labor Market Area includes Webster County and the adjoining Kentucky Counties of Caldwell, Crittenden, Henderson, Hopkins, McLean, and Union.

POPULATION			
	<u>1990</u>	<u>1980</u>	<u>1970</u>
Labor Market Area	151,738	152,446	134,096
Clay	1,173	1,356	1,426
Dixon	552	533	572
Providence	4,123	4,434	4,270
Sebree	1,510	1,516	1,092
Slaughters	235	269	276
Wheatcroft	206	325	229
Webster County	13,955	14,832	13,282

Source: U.S. Department of Commerce, Bureau of the Census, January 1991.

POPULATION PROJECTIONS				
	<u>1995</u>	<u>2000</u>	<u>2010</u>	<u>2020</u>
Labor Market Area	152,612	152,926	152,688	150,710
Webster County	13,734	13,520	13,195	12,874

Note: Population projections are from Moderate Growth Series forecast.

Source: University of Louisville, Urban Studies Center, State Data Center.

ESTIMATED LABOR SUPPLY					
	Current				Future
	Total	Unemployed	Employed Part-Time	Not in Labor Force	Becoming 18 years of age 1993 thru 1997
Labor Market Area*	19,651	4,684	7,069	7,898	11,410
Webster County	1,780	404	476	900	1,116

* Additional workers may be drawn from other nearby counties.

Note: Unemployed - persons unemployed and actively seeking work; Employed Part-Time - persons employed but working only 14 to 26 weeks per year; Not in Labor Force - represents the number of persons who would enter the labor force if suitable employment were available (based on the assumption that persons in Kentucky would like to participate in the labor force in the same proportion that they do nationally).

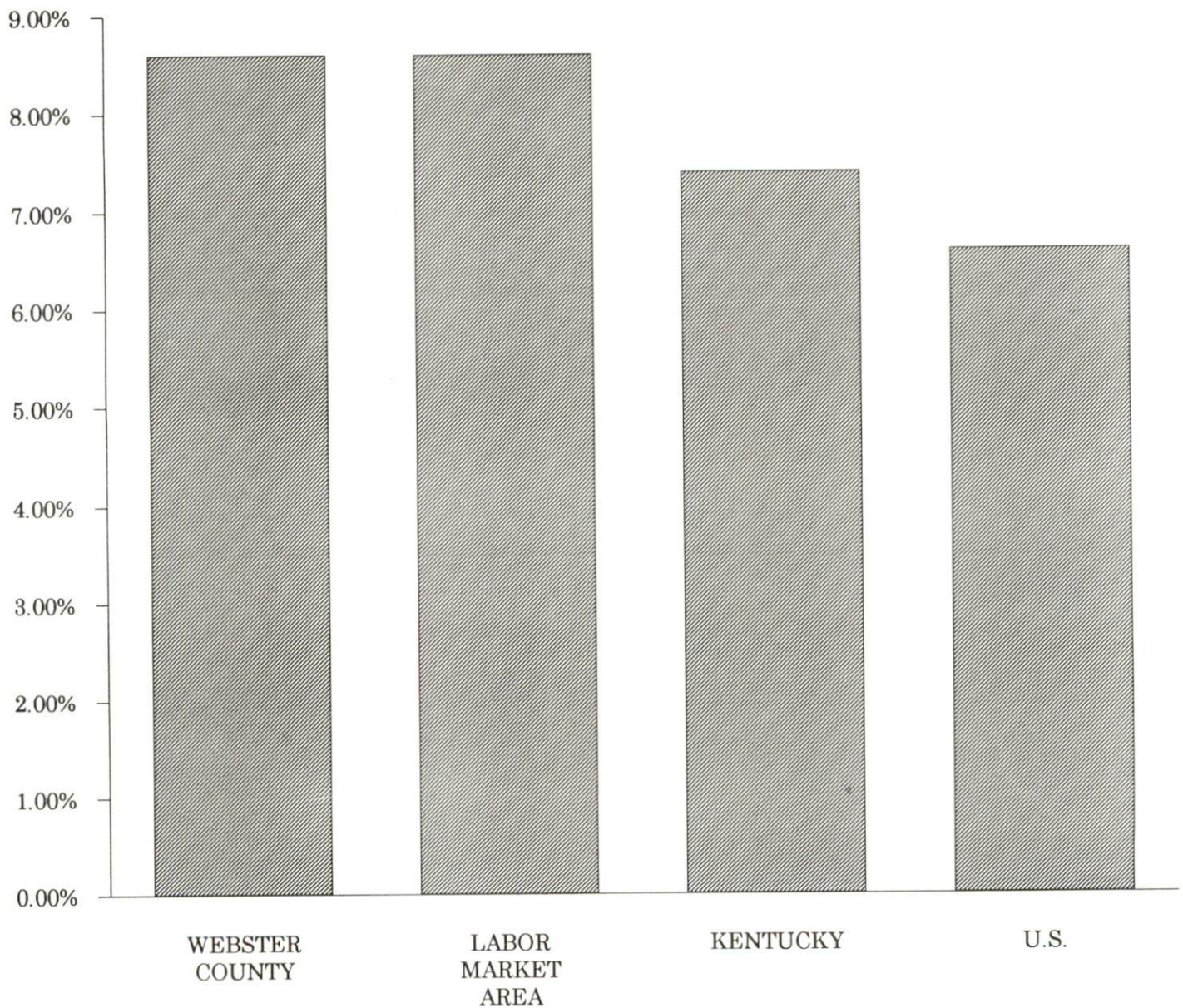
Sources: Kentucky Cabinet for Human Resources, Kentucky Labor Supply Estimates by County, 1989. Kentucky Cabinet for Economic Development, Future Labor Supply Becoming 18 Years of Age, 1993 thru 1997.

LABOR FORCE CHARACTERISTICS OF RESIDENTS, 1991

	<u>Webster County</u>	<u>Labor Market Area</u>
Civilian Labor Force	6,143	65,902
Employment	5,616	60,235
Unemployment	527	5,667
Rate of Unemployment (%)	8.6	8.6

Source: Kentucky Cabinet for Human Resources, Kentucky Labor Force Estimates, Annual Averages, 1991.

UNEMPLOYMENT RATES 1991

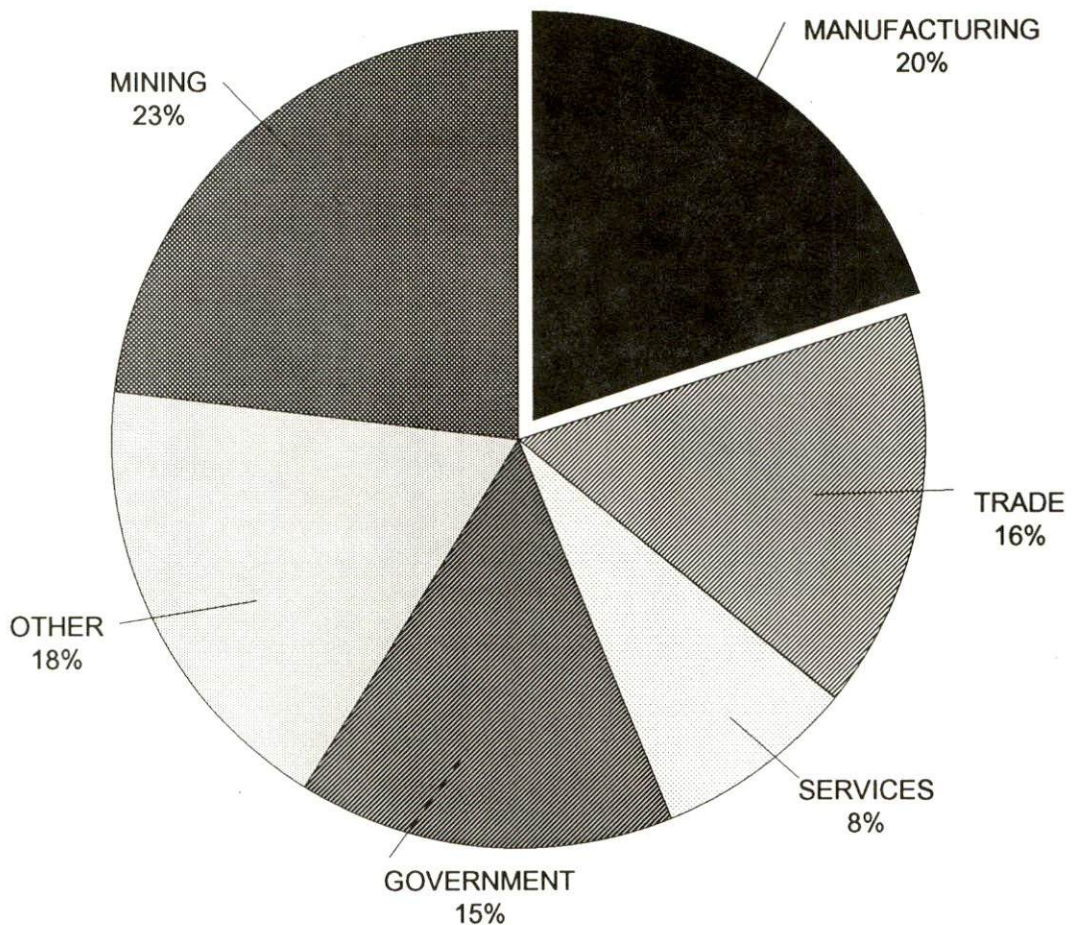


SELECTED COMPONENTS OF NONAGRICULTURAL EMPLOYMENT
BY PLACE OF WORK, 1991

	<u>Webster County</u>	<u>Labor Market Area</u>
All Industries (total)	4,145	51,427
Manufacturing	795	12,225
Wholesale & Retail Trade	658	10,895
Services	336	10,463
State/Local Government	637	6,853
Mining & Quarrying	965	5,104

Note: Excludes domestic workers, railway workers, certain nonprofit corporations, majority of federal government workers, and self-employed workers.
Source: Kentucky Cabinet for Human Resources, Average Monthly Workers Covered by Kentucky Unemployment Insurance Law, 1991.

WEBSTER COUNTY



PER CAPITA PERSONAL INCOME

<u>Area</u>	<u>1986</u>	<u>1990</u>	<u>Percent Change</u>
Webster County	\$11,445	\$16,883	47.5
Labor Market Area Range	\$8,733 - \$12,927	\$11,157 - \$16,934	-
Kentucky	\$11,273	\$14,992	33.0
U.S.	\$14,654	\$18,696	27.6

Source: U.S. Bureau of Economic Analysis, Kentucky Economic Information System, April 1992.

PER CAPITA PERSONAL INCOME
1990



AVERAGE PLACEMENT WAGES

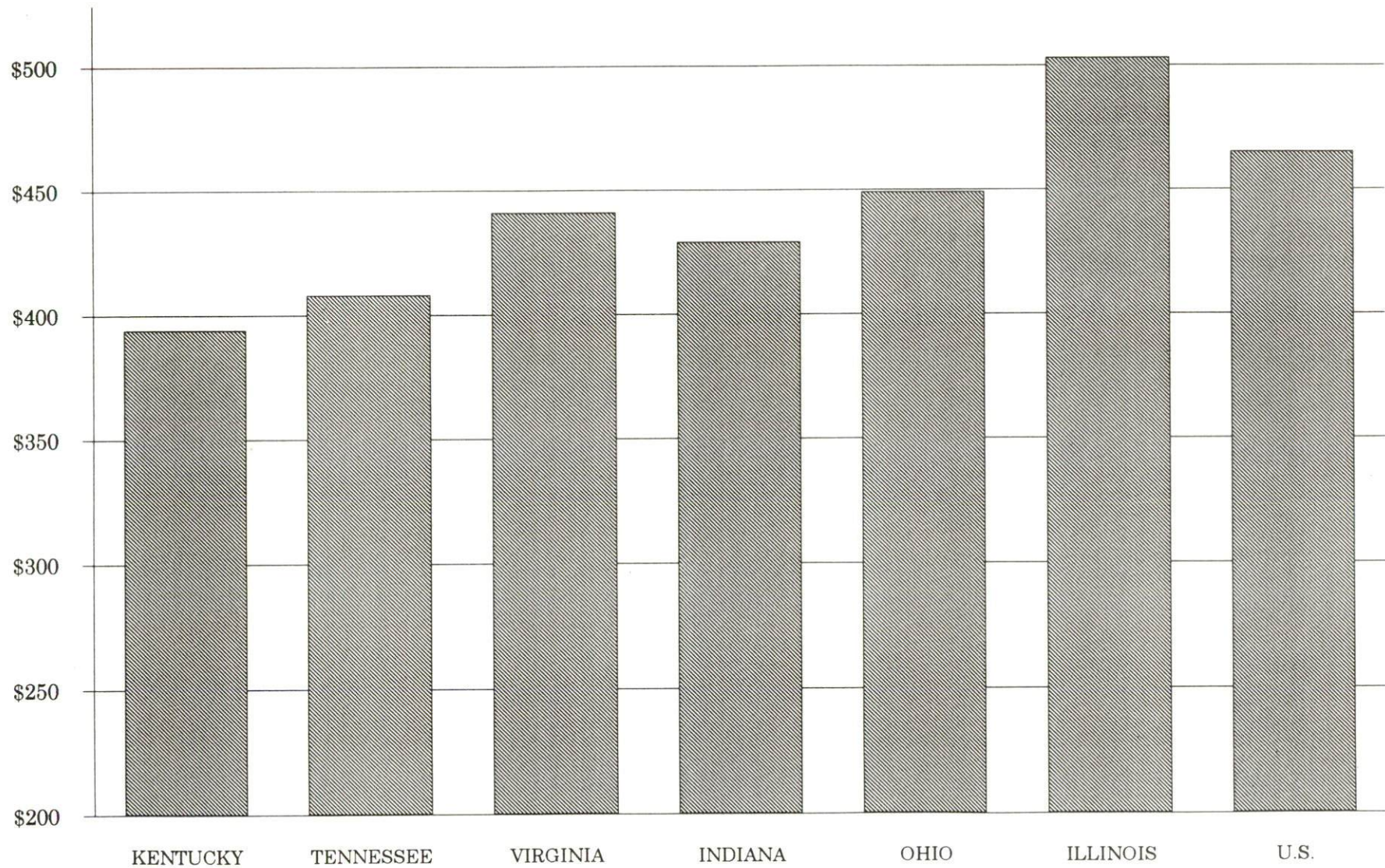
Webster County is served by the Henderson local office of the Kentucky Department for Employment Services. The focus of the following data is on job placements made by the Henderson local office and may therefore be used as an indicator of the wages which employers in the area pay new employees. During the twelve months which ended on June 30, 1990, the local employment office filled 2,797 job openings in various occupational categories. The average hourly wage for selected occupational categories were:

<u>OCCUPATIONAL CATEGORY</u>	<u>NUMBER OF PLACEMENTS</u>	<u>AVERAGE WAGE(\$)</u>
All Occupations	2,797	4.50
Clerical	652	4.01
Sales	49	4.62
Services (excluding domestic)	917	3.78
Agricultural, Fishery, Forestry, etc.	172	4.04
Processing	476	4.97
Machine Trades	86	5.95
Bench Work	81	5.51
Structural	128	6.51
Motor Freight/ Transportation	35	6.86
Packaging and Materials Handling	125	4.35
Other	19	14.91

The Henderson local office also serves Henderson and Union County. The above occupational categories are taken from the Dictionary of Occupational Titles published by the U.S. Department of Labor.

Source: Kentucky Cabinet for Human Resources, Department for Employment Services.

AVERAGE WEEKLY WAGES OF WORKERS COVERED BY
UNEMPLOYMENT INSURANCE - 1991



AVERAGE WEEKLY WAGES BY INDUSTRY
BY PLACE OF WORK, 1991*

	Webster County	Kentucky (State- Wide)	Tennessee	Virginia
All Industries	\$469.24	\$394.46	\$408.00	\$441.00
Mining & Quarrying	952.34	661.68	528.00	655.00
Contract Construction	237.48	410.33	436.00	452.00
Manufacturing	307.87	505.56	477.00	509.00
Transportation, Communications & Public Utilities	582.05	528.78	541.00	605.00
Wholesale & Retail Trade	229.87	268.42	N/A	N/A
Finance, Insurance & Real Estate	298.36	449.89	495.00	523.00
Services	175.91	350.41	394.00	455.00
State/Local Government	342.68	413.84	N/A	N/A
	<u>Indiana</u>	<u>Ohio</u>	<u>Illinois</u>	<u>U. S.</u>
All Industries	\$429.00	\$449.00	\$503.00	\$465.00
Mining & Quarrying	708.00	609.00	758.00	747.00
Contract Construction	499.00	510.00	635.00	514.00
Manufacturing	583.00	613.00	609.00	579.00
Transportation, Communications & Public Utilities	531.00	567.00	632.00	599.00
Wholesale & Retail Trade	N/A	N/A	N/A	N/A
Finance, Insurance & Real Estate	458.00	498.00	650.00	596.00
Services	368.00	398.00	462.00	443.00
State/Local Government	N/A	N/A	N/A	N/A

* Wages for U.S. and surrounding states rounded to nearest dollar.

N/A Not Available.

Note: The average weekly wage for each category includes the salaries and wages of all persons working for that type business. For example, the manufacturing category includes both production workers and administrative personnel. Excludes domestic workers, railway workers, certain nonprofit corporations, majority of federal government workers, and self-employed workers.

Source: Kentucky Cabinet for Human Resources, Average Weekly Wages of Workers Covered by Kentucky Unemployment Insurance Law, 1991. U.S. Department of Labor, Bureau of Labor Statistics, Employment and Wages, Annual Averages, 1991, January 1993.

EXISTING INDUSTRY

WEBSTER COUNTY MANUFACTURING FIRMS, THEIR PRODUCTS AND EMPLOYMENT

<u>Firm</u> <u>(Establishment date)</u>	<u>Product</u>	<u>1992</u> <u>Average Employment</u>
Clay		
Clay Machine Works, Inc. (1967)	Machine shop, cylinder parts, mining and farm machine parts	16
Crop Production Services (1964)	Fertilizer blending, chemicals	4
Dixon		
Pioneer Plastics (1981)	Injection molded plastics for reffridgerators, plastic packaging, molded parts for restaurants	65
Providence		
Carhartt, Inc. (1981)	Work clothing, men's outerwear	200
Hoov-R-Line (1974)	Plastic plumbing parts	140
The Journal-Enterprise, Inc. (1902)	Newspaper	5
Northern Printing & Office Supplies (1973)	Job printing	3
Providence Machine, Inc. (1956)	Machine shop, metal fabrication, mining machinery parts	22
Quality Fabrication, Inc. (1982)	Metal fabrication machines	26
Tri-Valley Plastic Molders (1989)	Plastic toys and car parts	46
West Kentucky Steel Construction (1958)	Steel fabrication, dragline, backhoe buckets	25

(Continued)

<u>Firm</u> <u>(Establishment date)</u>	<u>Product</u>	<u>1992</u> <u>Average Employment</u>
Sebree		
Carhartt Midwest, Inc. Sebree Division (1973)	Men's work clothing and jeans	200
Scott Manufacturing Company (1973)	Auto and appliance fiberglas insulation	23
Sebree Wholesale (1987)	Lace and craft supplies	30
The Sebree Banner (1892)	Newspaper, commercial printing	4
Wheatcroft		
Da-Co Machine and Steel Fabrication (1977)	Steel fabrication	6

Sources: Kentucky Cabinet for Economic Development, Division of Research;
Webster County Economic Development Corporation.

LABOR ORGANIZATIONS IN MANUFACTURING FIRMS

<u>Union</u>	<u>Representing workers at:</u>
United Garment Workers of America, AFL-CIO	Carhartt, Inc. (Providence plant); Carhartt Midwest, Inc. Sebree Division
United Steelworkers of America, AFL-CIO-CLC	Hoov-R-Line

SELECTED INDUSTRIAL SERVICES

<u>Types of Services</u>	<u>Location</u>	<u>Mileage from Dixon</u>
Custom Plastics Producers	Dixon, Kentucky	-
Electric Motor Repair	Henderson, Kentucky	26
Heat Treating Facilities	Evansville, Indiana	36
Industrial Waste Removal	Madisonville, Kentucky	24
	Henderson, Kentucky	26
Machine Shops, Tool & Die	Clay, Kentucky	9
	Providence, Kentucky	11
Metal Castings	Robards, Kentucky	19
Metal Finishers	Madisonville, Kentucky	24
Metal Service Centers	Madisonville, Kentucky	24
Millwrights and Riggers	Evansville, Indiana	36

Sources: Kentucky Cabinet for Economic Development, Division of Research.

TRANSPORTATION

Highways

Major highways serving Webster County include the Pennyriple Parkway, U.S. 41, U.S. 41 Alternate, Kentucky 56, and Kentucky 109. An interchange with the Pennyriple Parkway, a multi-lane highway, is located two miles east of Sebree. The Pennyriple Parkway provides access to the Audubon Parkway to the north and the Western Kentucky Parkway to the south. Interchanges with the Western Kentucky Parkway are located 16 miles south of Providence via Kentucky 109.

HIGHWAY MILES FROM DIXON, KENTUCKY, TO SELECTED MARKET CENTERS

City	Highway Miles	City	Highway Miles
Atlanta, GA	365	Los Angeles, CA	1,994
Baltimore, MD	746	Louisville, KY	148
Birmingham, AL	316	Nashville, TN	128
Chicago, IL	327	New Orleans, LA	609
Cincinnati, OH	249	New York, NY	906
Cleveland, OH	494	Pittsburgh, PA	536
Detroit, MI	482	St. Louis, MO	203
Knoxville, TN	297		

Note: Mileage computations are via the best interstate or primary highways, not necessarily the most direct route of travel.

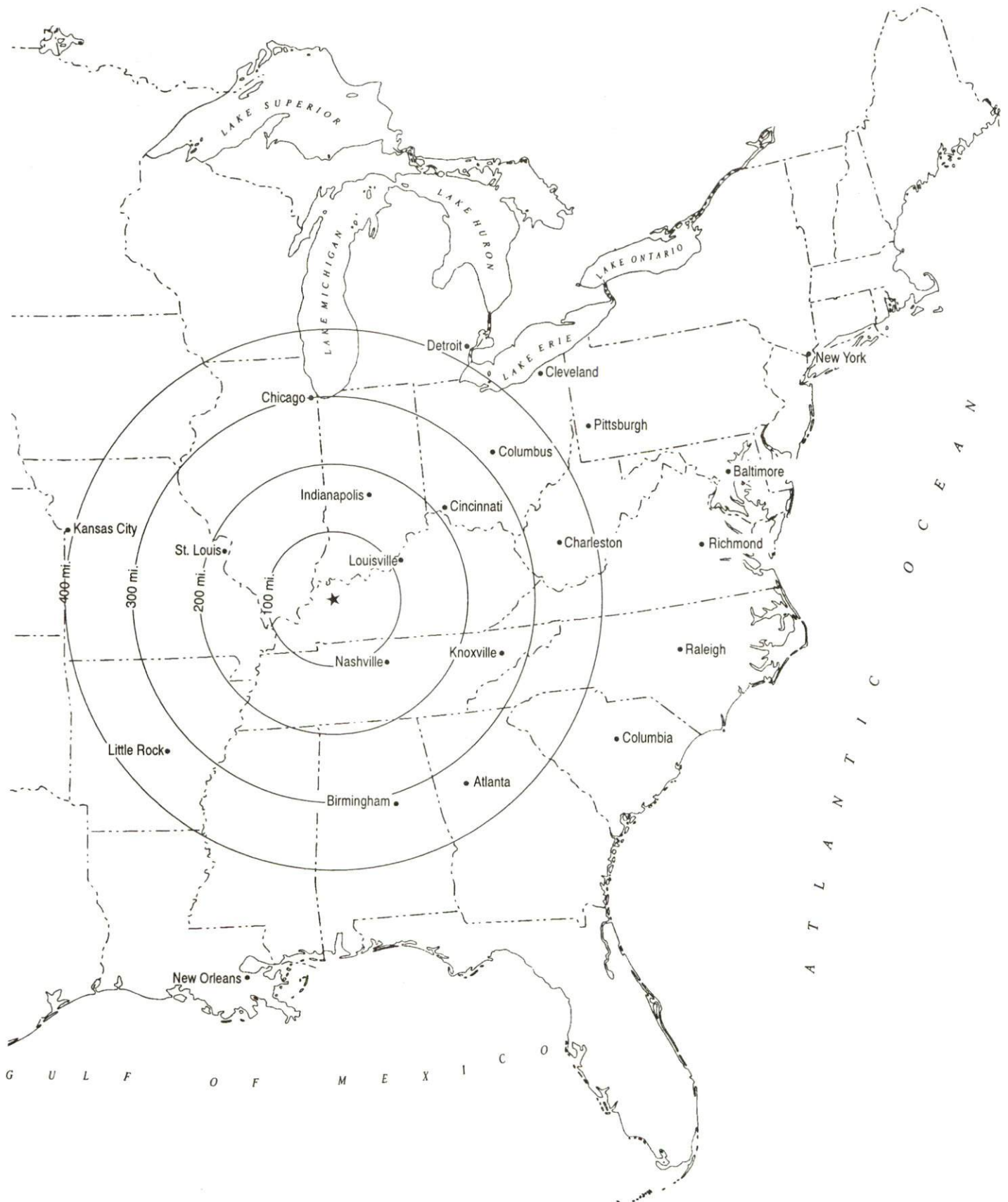
Sources: Rand McNally Standard Highway Mileage Guide, 1990. Official Kentucky Mileage Map, 1985.

Truck Service

Twenty-nine common carrier trucking companies provide interstate and/or intrastate service to Webster County.

Source: American Motor Carrier Directory, Spring 1993.

Selected Market Centers



Rail

Webster County is served by an excellent network of rail companies. CSX Transportation provides main line rail service to Sebree and branch line service to Providence. Tradewater Railway provides short line service to Providence. CSX Transportation provides the nearest intermodal facilities at Evansville, Indiana, 36 miles north of Dixon.

For details on routing, schedules, rates, and services contact:

Manager
Industrial Development
CSX Transportation
9420 Bunsen Parkway
Suite 212
Louisville, Kentucky 40220
(502) 499-3025

and/or

Tradewater Railway
P.O. Box 66
Sturgis, Kentucky 42459
(502) 333-4151

Air

Local

Location:	Providence-Webster County Airport
Runways:	2 miles northeast of Providence
Length:	1 paved
Traffic	3,800 feet
Control:	Lighted wind sock, unicom 122.8
Lighting:	Radio activated lighting system, rotating beacon
Services:	Car rental, tie down, hangar, office and lounge

Nearest Scheduled Commercial Airline Service

Location:	Evansville Regional Airport
	3 miles north of Evansville, Indiana;
	39 miles north of Dixon
Air Service:	ComAir, TransWorld Express, Northwest Air Link, USAir, Atlantic Southeast, American Eagle
Daily Arrivals & Departures:	88

Water

The nearest navigable river is the Green River at Sebree, where a nine-foot navigation channel is maintained to the Ohio River. A private rail-served terminal at Sebree will contract with any manufacturer for use of loading and unloading facilities on the Green River.

UTILITIES

Electricity

Company serving Clay, Dixon, Sebree, and parts of Webster County -

Kentucky Utilities Company

Source of power - Kentucky Utilities Company

For industrial rates contact:

Industrial Development Department
Kentucky Utilities Company
One Quality Street
Lexington, Kentucky 40507
(606) 255-2100

Company serving Providence - Providence Municipal Utilities

Source of power - Kentucky Utilities Company

For industrial rates contact:

Providence Municipal Utilities
P.O. Box 128
Providence, Kentucky 42450
(502) 667-2511

Company serving rural Webster County - Green River Electric Corporation
and Henderson-Union Rural Electric Cooperative Corporation

Source of power - Big Rivers Electric Corporation

For industrial rates contact:

Manager of Economic Development
Big Rivers Electric Corporation
P.O. Box 24
Henderson, Kentucky 42420
(502) 827-2561

and/or

Green River Electric Corporation
P.O. Box 1389
Owensboro, Kentucky 42302
(502) 926-4141

and/or

Henderson-Union Rural Electric
Cooperative Corporation
P.O. Box 18
Henderson, Kentucky 42420
(502) 826-3991 or (800) 844-4832

Natural Gas

Company serving **Clay** - Clay Gas System
Source of supply - Texas Gas Transmission Corporation
For rates and supplies contact:

Clay Gas System
P.O. Box 425
Clay, Kentucky 42404
(502) 664-2444

Company serving **Providence** - Providence Municipal Utilities
Source of supply - Texas Gas Transmission Corporation
For rates and supplies contact:

Providence Municipal Utilities
P.O. Box 128
Providence, Kentucky 42450
(502) 667-2511

Company serving **Dixon and Sebree** - Western Kentucky Gas Company
Source of supply - Texas Gas Transmission Corporation
For rates and supplies contact:

Western Kentucky Gas Company
P.O. Box 866
Owensboro, Kentucky 42302
(502) 685-8067

Public Water Supply

Company serving **Clay** -

Clay Water System
P.O. Box 425
Clay, Kentucky 42404
(502) 664-2444

Source of treated water -
Amount that can be purchased -
Average daily consumption -
Peak daily consumption -
Storage capacity -
Water pressure -

Webster County Water District
300,000 gallons per day
110,000 gallons
170,000 gallons
555,000 gallons
30 psi to 60 psi

Company serving **Providence** -

Providence Municipal Utilities
P.O. Box 128
Providence, Kentucky 42450
(502) 667-2511

Source -
Treatment plant capacity -
Average daily consumption -
Peak daily consumption -
Storage capacity -
Water pressure -

Municipal lake
1,500,000 gallons per day
729,941 gallons
962,000 gallons
700,000 gallons
52 psi to 83 psi

Company serving Sebree -	City of Sebree P.O. Box 245 Sebree, Kentucky 42455 (502) 835-7501
Source of treated water -	Green River (Alcan Aluminum Company)
Amount that can be purchased -	13,000,000 gallons per day
Average daily consumption -	150,000 gallons
Peak daily consumption -	220,000 gallons
Storage capacity -	310,000 gallons
Water pressure -	80 psi to 120 psi
Name of water district -	Webster County Water District 328 Davis Road Sebree, Kentucky 42455 (502) 884-3395
Area served -	Southern, northern, central and western parts of Webster County
Source -	Two wells
Capacity of treatment plant -	864,000 gallons per day
Average daily consumption -	550,000 gallons
Peak daily consumption -	750,000 gallons
Storage capacity -	735,000 gallons
Water pressure -	40 psi to 125 psi

The Webster County Water District in accordance with its adopted ten-year plan, has several projects under way including construction of approximately 80 miles of distribution line, construction of a 300,000-gallon elevated water storage tank and a new pump station. These projects have an estimated cost of \$2.5 million and are scheduled for completion in September 1993. In addition, the Water District plans to increase filter capacity and install two emergency portable generators by the end of 1993. Other projects are forthcoming.

Sewerage

Company serving Clay -	Clay Sewer System P.O. Box 425 Clay, Kentucky 42404 (502) 664-2444
Design capacity -	200,000 gallons per day
Average daily flow -	78,000 gallons
Type of treatment -	Primary
Treated effluent discharged into -	Crab Orchard Creek

Company serving Providence - Providence Municipal Utilities
P.O. Box 128
Providence, Kentucky 42450
(502) 667-2511

Design capacity - 629,000 gallons per day
Average daily flow - 351,000 gallons
Type of treatment - Primary and secondary
Treated effluent discharged into - Owens Creek

Providence Municipal Utilities recently renovated and expanded its existing wastewater treatment plant. The \$3.5 million project involved an expansion from 450,000 gallons per day to 629,000 gallons per day.

Company serving Sebree - Sebree Wastewater Treatment Plant
P.O. Box 245
Sebree, Kentucky 42455
(502) 835-7501

Design capacity - 180,000 gallons per day
Average daily flow - At capacity
Type of treatment - Primary
Treated effluent discharged into - Mock Roy Creek

Dixon - Sewer service and a sanitation district is presently being developed in Dixon. The Kentucky Infrastructure Authority is providing funding for the project. Several pumping stations will transport the sewage for treatment in Providence.

CLIMATE

Webster County

Temperature

Normal (30-year record)	55.70 degrees
Average annual 1991	57.80 degrees
Record highest, July 1954 (51-year record)	105.00 degrees
Record lowest, February 1951 (51-year record)	-23.00 degrees
Normal heating degree days (30-year record)	4,729
(Heating degree day totals are the sums of negative departures of average daily temperatures from 65 degrees F.)	

Precipitation

Normal (30-year record)	41.55 inches
Mean annual snowfall (51-year record)	13.50 inches
Total precipitation 1991	32.68 inches
Mean number days precipitation (.01 inch or more) (51-year record)	115.20
Mean number days thunderstorms (51-year record)	45.10

Prevailing winds (through 1963)

South-Southwest

Relative Humidity (29-year record)

Midnight	79 percent
6 a.m.	82 percent
Noon	59 percent
6 p.m.	63 percent

Source: U.S. Department of Commerce, Environmental Science Services Administration, Climatological Data, 1991. Station of record: Evansville, Indiana.

LOCAL GOVERNMENT

Structure

Clay, Providence and Sebree are each governed by a mayor and six council members. Dixon, Slaughters, and Wheatcroft are governed by a mayor and four council members. The mayor for each city is elected to a four-year term while the council members each serve two-year terms.

Webster County is served by a county judge/executive and three magistrates. Each county official serves a four-year term.

Planning and Zoning

City agency - Providence Planning Commission

Zoning enforced - Within city and 2.5 miles beyond the corporate limits

Subdivision regulations enforced - Within city limits and 2.5 miles beyond the corporate limits

Mandatory state codes enforced - Kentucky Plumbing Code, National Electric Code, Kentucky Boiler Regulations and Standards, Kentucky Building Code (modeled after BOCA code)

Local Fees and Licenses

The City of Providence levies a \$7.50 annual automobile license fee. The City of Sebree levies business license fees ranging from \$31.25 to \$70.00. Automobile license fees are \$10.00 annually. An optional fire card is available for \$25.00 annually, which provides fire protection to residents and businesses outside of Sebree, within a ten-mile radius.

PROPERTY TAXES

The Kentucky Constitution requires the state to tax all classes of taxable property, and state statutes allow local jurisdictions to tax only a few classes. All locally taxed property is subject to county taxes and school district taxes (either a county school district or an independent school district). Property located inside of city limits may also be subject to city property taxes.

Special local taxing jurisdictions (fire protection districts, watershed districts, and sanitation districts) levy taxes within their operating areas (usually a small portion of community or county).

Property assessments in Kentucky are at 100% fair cash value. A 15% reduction is automatically granted for accounts receivable.

STATE PROPERTY TAX RATES PER \$100 VALUATION

<u>Selected Classes of Property</u>	<u>1992 State Rate</u>	<u>Local Taxation Permitted</u>
Real Estate	\$0.184	YES
Manufacturing Machinery	0.150	NO
Pollution Control Equipment	0.150	NO
Inventories		
Raw Materials	0.050	NO
Goods in Process	0.050	NO
Finished Goods	0.050	YES
Motor Vehicles	0.450	YES
Other Tangible Personal Property	0.450	YES
Intangibles (Accounts Receivable, Money on Hand)	0.250	NO

LOCAL PROPERTY TAX RATES PER \$100 VALUATION, 1992

<u>Taxing Jurisdiction</u>	<u>Real Estate</u>	<u>Finished Goods & Tangibles</u>	<u>Motor Vehicles</u>
Webster County	\$0.2048	\$0.2048	\$0.2208
School Districts:			
Providence Independent	0.3290	0.3290	0.5450
Webster County	0.4200	0.4200	0.4360
Cities:			
Clay	0.2800	0.2800	0.2700
Dixon	0.1670	0.2200	0.2030
Providence	0.5000	0.5000	0.5000
Sebree	0.3300	0.3300	0.3300
Slaughters	0.1980	0.1980	0.2470
Wheatcroft	None	None	None

EDUCATION

Public Schools

	Providence Independent	Webster County
Total Enrollment (Fall, 1992)	590	2,063
Pupil-Teacher Ratio (1991-92)	16.3-1	17.3-1
Percent High School Graduates to College (1991-92)	36.4	60.6
Expenditures Per Pupil (1991-92)	\$3,436.39	\$3,617.55

The Providence Independent School System completed an addition at the elementary school which involved three new classrooms, a computer lab, and a gymnasium. Total cost was \$1.3 million.

The Webster County School System recently constructed an addition at the high school which included two new classrooms, a cafeteria, and an auditorium. Total cost was \$2.1 million.

Area Colleges and Universities

<u>Name</u>	<u>Location (Miles distant)</u>	<u>Enrollment (Fall, 1992)</u>
Madisonville Community College	Madisonville, Kentucky (24)	2,403
Henderson Community College	Henderson, Kentucky (26)	1,458
University of Evansville	Evansville, Indiana (36)	3,071
University of Southern Indiana	Evansville, Indiana (36)	7,430
Brescia College	Owensboro, Kentucky (56)	800
Kentucky Wesleyan College	Owensboro, Kentucky (56)	769
Owensboro Community College	Owensboro, Kentucky (56)	2,900
Hopkinsville Community College	Hopkinsville, Kentucky (58)	3,020

VOCATIONAL-TECHNICAL TRAINING

Kentucky Tech schools are operated by the Cabinet for Workforce Development and provide secondary (Sec) and postsecondary (P/S) vocational-technical training.

<u>Kentucky Tech Schools</u>	<u>Location (Mileage from Dixon)</u>	<u>Number of Program Offerings</u>	<u>Cumulative Enrollment 1991-1992</u>		<u>Approximate Number Completing Programs Annually</u>
Webster County Area Vocational Education Center	Dixon	4	<u>Sec</u> 165	<u>P/S</u> 9	12
Madisonville State Vocational-Technical School	Madisonville (24)	9	<u>Sec</u> 80	<u>P/S</u> 283	40
Madisonville Health Technology Center	Madisonville (24)	10	<u>Sec</u> 50	<u>P/S</u> 246	160

An expansion of the Health Technology Center was approved by the General Assembly in 1990 and is expected to be completed in 1993. This new construction will add approximately 44,300 square feet of additional program space.

Customized Training

The Kentucky Tech system, through its Training and Development Coordinators will provide technical assistance and will identify and develop low cost customized training programs and services for both established and prospective businesses. Businesses needing customized training should contact a Training and Development Coordinator in Hopkins County, located at the Kentucky Tech West Region office in Madisonville.

Assessment Services

Kentucky Tech Career Connections offers to business, education, and government agencies customized assessment in career inventories, interest inventories, pre-hire assessments, psychomotor skills and academic potential. The school also has a Career Connections mobile unit that is available to potential Kentucky Tech students, business and industry, and other agencies within Webster County.

Adult Basic Education

Adult education is available to adults who want to develop new skills, improve basic skills or earn a high school equivalency degree. In Webster County adult literacy is provided by the Webster County Literacy Commission and adult basic education is provided by the Providence Board of Education.

Bluegrass State Skills Corporation

The Bluegrass State Skills Corporation, an independent public corporation created and funded by the Kentucky General Assembly, provides programs of skills training to meet the needs of business and industry from entry level to advanced training, and from upgrading present employees to retraining experienced workers.

The Bluegrass State Skills Corporation is a major source for skills training assistance for a new or existing company. The Corporation works in partnership with other employment and job training resources and programs, as well as Kentucky's economic development activities, to package a program customized to meet the specific needs of a company.

OTHER LOCAL FACILITIES

Local Medical Personnel

Physicians - 3
Dentists - 4

Hospitals

<u>General Hospital</u>	<u>Location</u>	<u>Beds</u>
Regional Medical Center Madisonville	Madisonville, 24 miles southeast of Dixon	410
Community United Methodist Hospital	Henderson, 26 miles north of Dixon	213

Regional Medical Center Madisonville

Medical staff - 92 active staff physicians, 15 courtesy staff physicians,
394 registered nurses; 107 licensed practical nurses

Community United Methodist Hospital

Medical staff - 59 active staff physicians, 39 courtesy staff physicians,
187 registered nurses; 62 licensed practical nurses

Other Medical Facilities and Services

Community Methodist Ambulatory Center (Dixon)
Sebree Medical Center
Trover Clinic (Providence)
Webster County Health Department (Dixon)
Providence Fire Department (provides ambulance service)
City of Sebree Emergency Medical Service
Webster County Ambulance Service (units in Clay and Dixon)

Banks and Savings and Loan Associations

Dixon Bank
Farmers Bank (Clay)
First Federal Savings Bank of Kentucky (Providence)
People's Bank and Trust (Slaughters)
Poole Deposit Bank
Providence State Bank
Sebree Deposit Bank

Newspapers

Journal Enterprise - Providence (weekly)
The Sebree Banner - Sebree (weekly)

Telephone Service

South Central Bell

RECREATION

Local

Baker Park in Dixon includes a fishing lake and a little league field. Dixon Park features basketball and tennis courts, a baseball field, a picnic shelter, and concessions. A private developer is in the process of developing a nine-hole golf course in Dixon which will reach completion by May 1993. An additional 18-hole golf course is planned for the future as well as a resort area, a lodge, a meeting facility, and a residential resort community.

Westerfield Memorial Park in Providence contains picnic shelters and grills, a concession stand, restrooms, three baseball diamonds, two tennis courts, a basketball court, a track and a playground. The Legion park contains a baseball diamond, Christian Youth Center, horse show ring and is the location of the annual Coal Festival. Providence Golf and Country Club features a nine-hole golf course and a swimming pool.

The 30-acre Sebree Springs Park in Sebree features a swimming pool, two tennis courts, volleyball courts, a baseball diamond, a pee-wee baseball diamond, a basketball court, a pavilion, a picnic area, three shelter houses, a horse show ring and playground equipment. Sebree Elementary School offers a football field.

The Clay Community park in Clay is a ten-acre public park containing two lighted baseball fields with bleachers, playground equipment, two tennis courts, concession stands, barbecue pit, and a community building.

Area (Within 35 miles)

Just north of Henderson, 28 miles north of Dixon, is the John James Audubon State Park, a 692-acre park where the famed naturalist gathered material for his painting, "The Birds of America." Many paintings by Audubon and his sons, and 126 first-edition prints of his paintings are on display at the Audubon Memorial and Nature Museum which is the focal point of the park. Other park features include the Audubon woods, a bird sanctuary, and a 12-acre nature preserve lake. The park has cottages and camping sites. Recreational facilities include a 28-acre recreational lake, a beach and a bathhouse, rental rowboats and pedal boats, a dock, a nine-hole golf course, a tennis court, hiking trails, picnic shelters, planned recreation, and playgrounds. Organized recreation programs are offered during the summer.

Pennyrile Forest State Resort Park near Dawson Springs is located 33 miles south of Dixon. The 24-room lodge, 13 cottages, and 68 campsites nestled within the trees provide excellent accommodations. Other facilities and activities include a dining room, a gift shop, rental rowboats and pedal boats, a nine-hole golf course, miniature golf, hiking trails, horseback riding, picnicking, playgrounds, shuffleboard, swimming at the lodge pool and at the sand beach, and two tennis courts. Lake Beshear, only four miles from the lodge, sports good fishing.

COMMUNITY IMPROVEMENTS

Recent

Providence Municipal Utilities recently renovated and expanded its existing wastewater treatment plant. The \$3.5 million project involved an expansion from 450,000 gallons per day to 629,000 gallons per day.

The Webster County School System recently constructed an addition at the high school which included two new classrooms, a cafeteria, and an auditorium. Total cost was \$2.1 million.

The Providence Independent School System completed an addition at the elementary school which involved three new classrooms, a computer lab, and a gymnasium. Total cost was \$1.3 million.

Poole Development Corporation recently opened a community center in Poole which provides space for meetings and large gatherings.

Under Way

Webster County Economic Development Corporation is presently developing a county-wide economic development plan and a new industrial site in the county.

Sewer service and a sanitation district is presently being developed in Dixon. The Kentucky Infrastructure Authority is providing funding for the project. Several pumping stations will transport the sewage for treatment in Providence.

The Webster County Water District in accordance with its adopted ten-year plan, has several projects under way including construction of approximately 80 miles of distribution line, construction of a 300,000-gallon elevated water storage tank and a new pump station. These projects have an estimated cost of \$2.5 million and are scheduled for completion in September 1993.

Webster County is in the process of implementing the "911" emergency dispatch communications system. Eventually, the system will be upgraded to the enhanced version.

A private developer is in the process of developing a nine-hole golf course in Dixon which will reach completion by May 1993. An additional 18-hole golf course is planned for the future as well as a resort area, a lodge, a meeting facility, and a residential resort community.

Planned

The Webster County Water District plans to increase filter capacity and install two emergency portable generators by the end of 1993. Other projects are forthcoming.

A \$160,000 grant will help to rehabilitate low income rural housing in Webster County.