

1984

Industrial Resources: Adair County - Columbia

Kentucky Library Research Collections
Western Kentucky University, spcol@wku.edu

Follow this and additional works at: https://digitalcommons.wku.edu/adair_cty

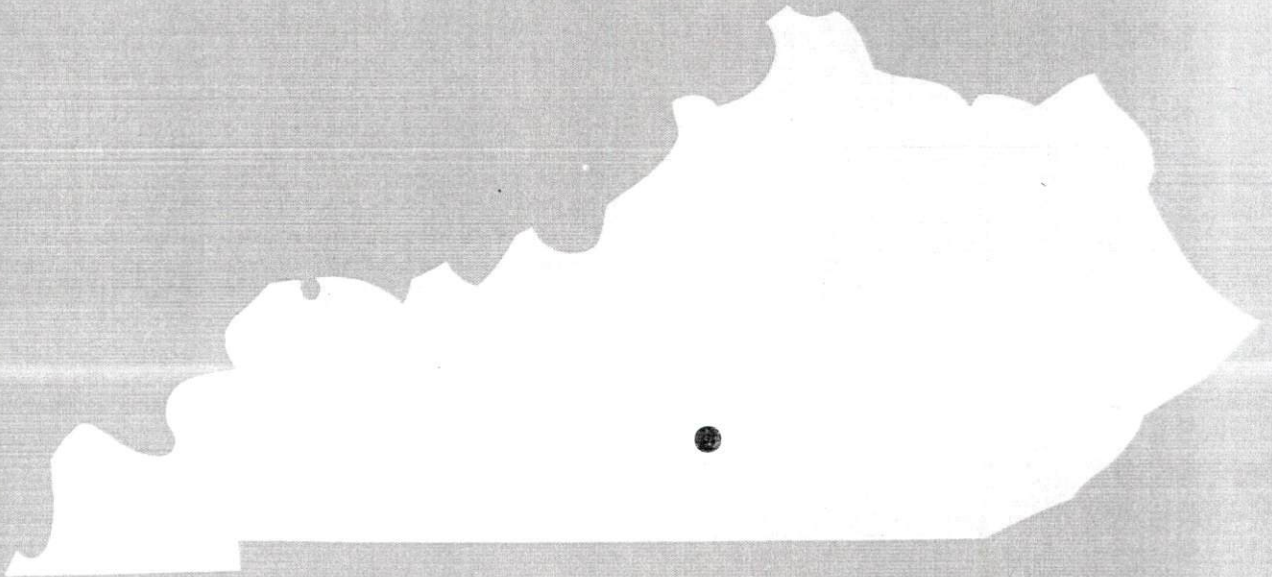
 Part of the [Business Administration, Management, and Operations Commons](#), [Growth and Development Commons](#), and the [Infrastructure Commons](#)

Recommended Citation

Kentucky Library Research Collections, "Industrial Resources: Adair County - Columbia" (1984). *Adair County*. Paper 14.
https://digitalcommons.wku.edu/adair_cty/14

This Report is brought to you for free and open access by TopSCHOLAR®. It has been accepted for inclusion in Adair County by an authorized administrator of TopSCHOLAR®. For more information, please contact topscholar@wku.edu.

1984
A comprehensive
report on
Columbia, Ky.



COLUMBIA, KENTUCKY --- Site 184 --- 62.75 Acres

For more information contact the Kentucky Department of Economic Development, Industrial Development & Marketing Division, Capital Plaza Tower, Frankfort, Kentucky 40601 (502-564-7140).



LOCATION: Within southwestern city limits
ZONING: Industrial
HIGHWAY ACCESS: Paved access road adjacent to northern boundary of site; Cumberland Parkway interchange approximately 0.6 mile away
RAILROAD: Not rail served
WATER: Columbia Utilities Commission
 Size Line: 8-inch line along northwest boundary of site
NATURAL GAS: Columbia Utilities Commission
 Size Line: 2-inch line along northwest boundary of site
ELECTRICITY: Taylor County RECC
SEWERAGE: Columbia Utilities Commission
 Size Line: 8-inch line approximately 100 feet north across paved access road
OWNERSHIP: Columbia-Adair County Chamber of Commerce

SCALE: 1 inch = 2000 feet
CONTOUR INTERVAL: 10 feet
BASE: USGS 7.5 minute series - 1973

UTILITIES
 - - - - - Water Line
 - - - - - Sewer Line

Existing Industries
A OshKosh B'Gosh, Inc.
B TransAmerica Delaval Inc.
C Ewing Mfg. Co.

A COMPREHENSIVE REPORT ON
COLUMBIA, KENTUCKY

Prepared by
The Kentucky Department of Economic Development
Division of Research and Planning
in cooperation with
The Columbia-Adair County Chamber of Commerce

1984

Program manager - Pamela Riley; research - Bill Morris; clerical - Bobbi Medley; graphics - Frank Ferrante, Tony Cecconi, Robert Owens; cartography - Site Evaluation Branch, Division of Industrial Development. Cost of printing paid from state funds.

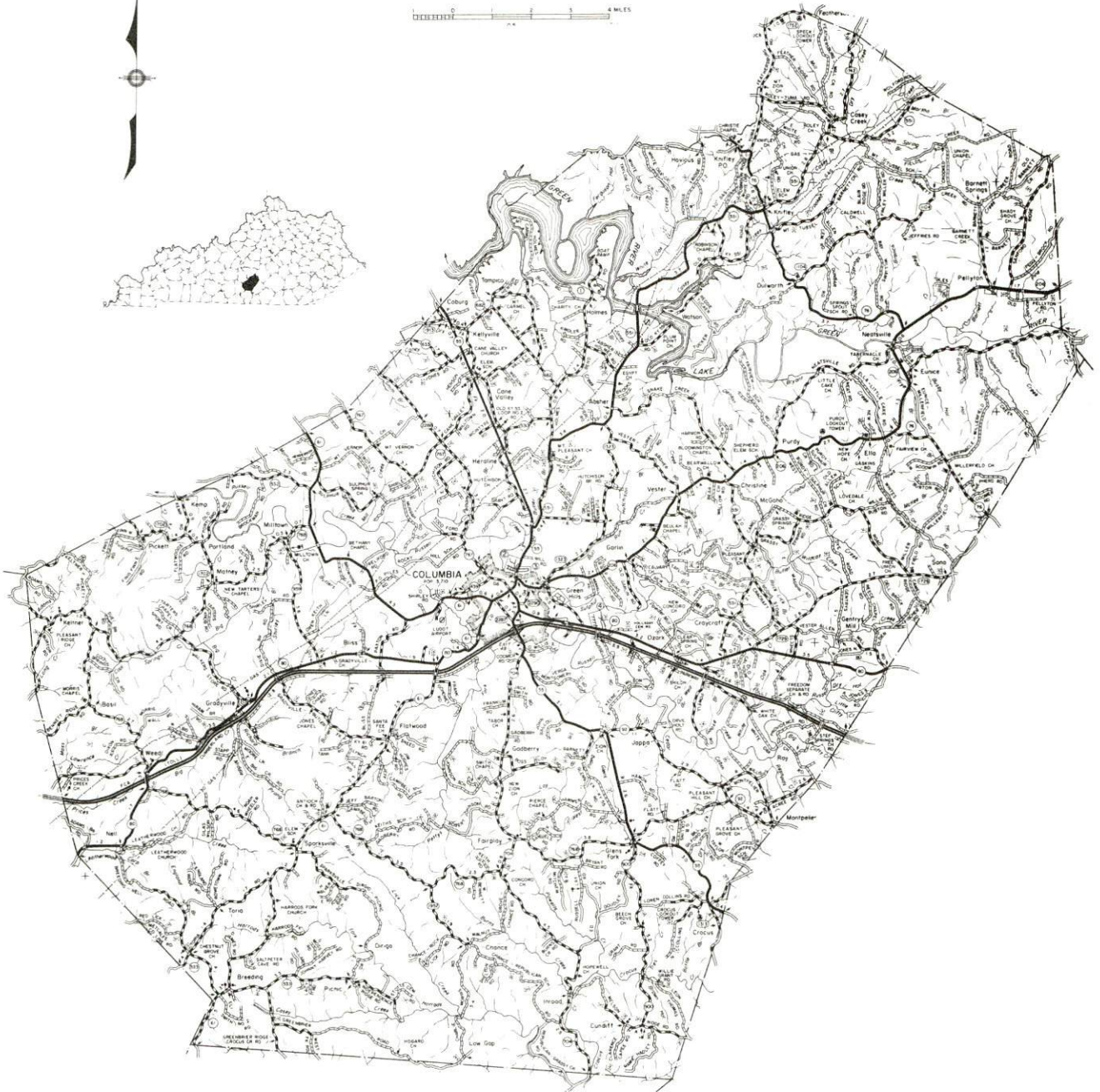
TABLE OF CONTENTS

<u>Chapter</u>	<u>Page</u>
INDUSTRIAL SITES	i
COLUMBIA, KENTUCKY - A RESOURCE PROFILE	1
THE LABOR MARKET AREA	3
Population	3
Labor Force Characteristics of Residents, 1982	3
Selected Components of Nonagricultural Employment, by Place of Work, 1982	4
Adair County Manufacturing Firms, Their Products and Employment	5
Labor Organizations in Manufacturing Firms	6
Industrial Services	7
Estimated Male Labor Supply	8
Estimated Female Labor Supply	9
Average Weekly Wages By Industry, by Place of Work, 1982	10
Per Capita Personal Income	12
TRANSPORTATION	13
Rail	13
Highways	13
Truck Service	13
Air	14
Bus	15
Taxi	15
Rental Services	15
Water	15
POWER AND FUEL	16
Electricity	16
Natural Gas	16
Other Fuels	17
WATER AND SEWERAGE	18
Public Water Supply	18
Raw Water	20
Sewerage	20
CLIMATE	21

<u>Chapter</u>	<u>Page</u>
LOCAL GOVERNMENT	22
City	22
County	22
Assessed Value of Property, 1983	22
Property Taxes	22
Combined State and Local Rates Per \$100 Valuation, 1983	23
Planning and Zoning	23
Safety	24
Police	24
Fire	24
Rescue Service	24
Refuse Collection and Disposal	24
EDUCATION	25
Public Schools	25
Area Colleges and Universities	26
Vocational Schools	27
HEALTH	29
Local Medical Personnel	29
Hospitals	29
Other Medical Facilities	29
Ambulance Service	29
Public Health	29
OTHER LOCAL FACILITIES	30
Communications	30
Library Services	31
Religious Institutions	31
Financial Institutions	32
Hotels and Motels	32
Clubs and Organizations	33
RECREATION	34
COMMUNITY IMPROVEMENTS	36

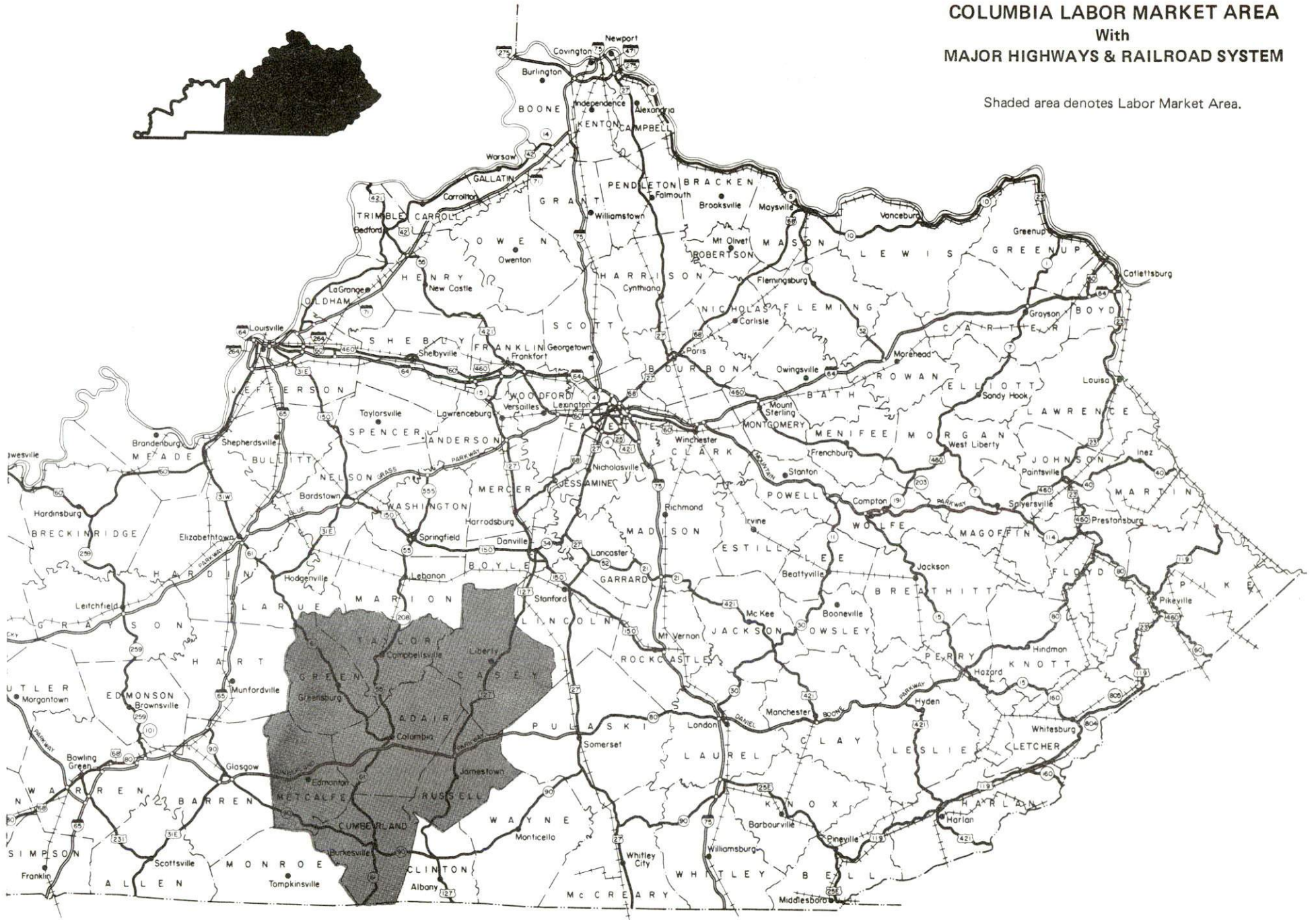
1984 EDITION
GENERAL HIGHWAY MAP
ADAIR COUNTY
KENTUCKY

PREPARED BY THE
KENTUCKY TRANSPORTATION CABINET
DEPARTMENT OF HIGHWAYS
DIVISION OF PLANNING
IN COOPERATION WITH THE
U.S. DEPARTMENT OF TRANSPORTATION
FEDERAL HIGHWAY ADMINISTRATION



COLUMBIA LABOR MARKET AREA With MAJOR HIGHWAYS & RAILROAD SYSTEM

Shaded area denotes Labor Market Area.



COLUMBIA, KENTUCKY - A RESOURCE PROFILE

Columbia, the county seat of Adair County, is located in south central Kentucky's Mississippian Plateaus Region, near Green River Lake. The city was named to the All Kentucky City Hall of Fame in 1980 by the Kentucky Chamber of Commerce. The 1980 census showed Columbia had a population of 3,710. Columbia is located 105 miles south of Louisville, Kentucky; 131 miles northeast of Nashville, Tennessee; and 348 miles southeast of St. Louis, Missouri.

Adair County, which covers a land area of 407 square miles, had a 1980 population of 15,233 persons.

The Economic Framework

The total number of Adair County residents employed in 1982 averaged 7,250 with nonagricultural jobs accounting for 6,095 workers. Manufacturing employers in the county reported 760 workers; wholesale and retail trade 460; state and local government 455; and 450 employees in service occupations. Manufacturing employment is greatest in apparel and related products, nonelectrical machinery, and lumber and wood products.

Per capita personal income in Adair County in 1981 was \$5,745. Between 1977 and 1981, per capita income increased by 57 percent.

The Columbia labor market area includes Adair County and the adjoining Kentucky counties of Casey, Cumberland, Green, Metcalfe, Russell and Taylor. The total number of residents of the labor market area employed in 1982 averaged 39,780 with nonagricultural jobs accounting for 34,010 workers. Manufacturing employers in this area reported 9,525 workers; wholesale and retail trade 3,395; state and local government 3,300; and 1,840 in service industries.

Resources for Growth

1. Labor Supply - There is a current labor supply of 5,750 men and 3,990 women available for industrial jobs in the labor market area. In addition, from 1984 through 1988, 3,865 young men and 3,850 young women in the area will become 18 years of age and potentially available for industrial jobs.

2. Transportation - The Seaboard System Railroad offers the nearest rail service at Campbellsville, 19 miles north of Columbia. The Cumberland Parkway serves Columbia and connects with Interstate 65, 50 miles west of Columbia. The city is also served by Kentucky Route 80 - a "AAA"-rated, 80,000-pound gross load limit, highway - and by Kentucky Route 55, which is "AAA"-rated, north of the city. Five common carrier trucking companies serve Columbia, and one maintains local terminal facilities. The nearest scheduled commercial airline service is at Lexington's Blue Grass Field, 96 miles northeast of Columbia. The Columbia-Adair County Airport has a 2,600-foot runway and offers charter services.

3. Power and Fuel - Kentucky Utilities Company provides electric power to Columbia and parts of Adair County. Taylor County Rural Electric Cooperative Corporation, whose source of power is East Kentucky Power Cooperative, serves most of Adair County. Columbia Utilities Commission, whose source of supply is Texas Eastern Transmission Corporation, provides natural gas service to the city. There are two propane distributors and three fuel oil dealers in Columbia.

4. Education - The Adair County Public School System enrolled 2,801 students in the fall of 1983. The overall student-teacher ratio was 18 to 1.

Lindsey Wilson College in Columbia is a two-year institution of higher learning offering an associate degree program. Six other institutions of higher learning are located within 70 miles of Columbia.

The Somerset State Vocational-Technical School, 42 miles east of Columbia, offers training in 17 course areas. The Russell County Area Vocational Education Center at Russell Springs, 13 miles east, offers training in 6 course areas.

THE LABOR MARKET AREA

The Columbia Labor Market Area includes Adair County and the adjoining Kentucky counties of Casey, Cumberland, Green, Metcalfe, Russell and Taylor.

POPULATION			
Area	1980	1970	Percent Nonwhite
Columbia	3,710	3,234	9.6
Labor Market Area	92,753	79,024	N/A
Adair County	15,233	13,037	3.6
Casey County	14,818	12,930	0.3
Cumberland County	7,289	6,850	5.4
Green County	11,043	10,350	3.5
Metcalfe County	9,484	8,177	3.0
Russell County	13,708	10,542	0.9
Taylor County	21,178	17,138	5.6

Note: The 1980 counts of population by race are provisional.

Sources: U.S. Department of Commerce, Bureau of the Census, 1980 Census of Population and Housing, March 1981; 1980 Census of Population, Number of Inhabitants. Population Research Unit, Urban Studies Center, University of Louisville, Kentucky Demographics: The 1980 Census of Kentucky, Characteristics of Population, Households, Housing, January 1982.

LABOR FORCE CHARACTERISTICS OF RESIDENTS, 1982

	Adair County	Labor Market Area
Civilian Labor Force	7,945	44,282
Employment	7,251	39,777
Agricultural	1,156	5,770
Nonagricultural	6,095	34,007
Unemployment	694	4,505
Rate of Unemployment (%)	8.7	10.2

Source: Kentucky Cabinet for Human Resources, Kentucky Labor Force Estimates, Annual Averages, 1982.

SELECTED COMPONENTS OF NONAGRICULTURAL EMPLOYMENT,
BY PLACE OF WORK, 1982

	<u>Adair County</u>	<u>Labor Market Area</u>
All Industries (total)	2,423	20,186
Manufacturing	757	9,525
Wholesale & Retail Trade	463	3,395
Services	454	1,842
State/Local Government	455	3,303
Contract Construction	46	496

Note: Excludes domestic workers, railway workers, certain nonprofit corporations, majority of federal government workers, and self-employed workers.

Source: Kentucky Cabinet for Human Resources, Average Monthly Workers Covered by Kentucky Unemployment Insurance Law, 1982.

ADAIR COUNTY MANUFACTURING FIRMS,
THEIR PRODUCTS AND EMPLOYMENT

Firm (Establishment date)	Product	Employment			Labor Unions
		Total	Male	Female	
Columbia					
Barnes Milling Company (1965)	Feed	7	5	2	
City Supply Company (1948)	Ready-mixed concrete, concrete stock tanks	14	12	2	
The Daily Statesman, Waggener-Walker Newspapers (1968)	Offset printing, newspaper publishing, job printing	70	18	52	
Day & Day Feed Mill (1960)	Feed	5	5	--	
J. Downey & Son Lumber (1975)	Furniture dimension stock, heading	30	29	1	
Ewing Manufacturing Company (1978)	Ladies' blouses	55	5	50	
R.E. Gaddie, Inc. (1938)	Plant mix asphalt	22	20	2	
Hancock Furniture Shop (1979)	Wood furniture	4	4	--	
Kentucky Tie & Lumber Company (1958)	Hardwood lumber, dimension material, pallet material	30	28	2	
M & W Milling Company, Inc. (1946)	Feed	7	6	1	
Morrison Lumber Company (1958)	Rough lumber, crossties, charcoal wood, pallet stock	16	15	1	
Old Craftsman Furniture & Cabinet Shop (1981)	Cherry reproduction furniture	8	--	--	

(Contd.)

<u>Firm</u> (Establishment date)	<u>Product</u>	<u>Employment</u>			<u>Labor Unions</u>
		<u>Total</u>	<u>Male</u>	<u>Female</u>	
Oshkosh B'Gosh, Inc. (1964)	Work clothing, casual clothing	500	--	--	Garment Workers*
Roach Manufacturing Company (1940)	Tobacco spears and knives, truck body hardware	3	3	0	
W.H. Sandusky & Son, Inc. (1940)	Lumber	19	18	1	
Shamrock Stone, Inc. (1978)	Crushed stone, agricultural lime	18	18	--	
South Central Printing, Inc. (1979)	Job printing calendars, book composing and printing, business forms	13	5	8	
Transamerica Delaval, Inc. (1973)	Hydraulic pumps	130	121	9	
Warner Fertilizer Company, Inc. (1973)	Fertilizer	3	--	--	
Whitney & Whitney (1952)	Hardwood lumber, crossties, pallet lumber	17	17	--	
Knifley					
Quality Furniture Shop (1958)	Cherry reproduction furniture	2	2	--	

* See Labor Organizations below.

Sources: Kentucky Department of Economic Development, 1984 Kentucky Directory of Manufacturers; Division of Research and Planning.

LABOR ORGANIZATIONS IN MANUFACTURING FIRMS

Union

United Garment Workers
of America, AFL-CIO

Representing workers at:

Oshkosh B'Gosh, Inc.

INDUSTRIAL SERVICES

<u>Types of Services</u>	<u>Location</u>	<u>Mileage from Columbia</u>
Custom Plastics Producers	Springfield	47
Electric Motor Repair	Glasgow	37
	Lebanon	39
	Somerset	42
Grinding, Precision & Tool	Lexington	101
	Louisville	105
Heat Treating Facilities	Lexington	101
	Louisville	105
Industrial Equipment & Supplies	Bowling Green	70
Industrial Gases	Campbellsville	19
Industrial Waste Removal	Somerset	42
Machine Shops, Tool & Die	Somerset	42
	Tompkinsville	45
	Springfield	47
Metal Finishers	Elizabethtown	90
	Lexington	101
	Louisville	105
Metal Service Centers	Bowling Green	70
Millwrights	Bowling Green	70

Sources: Kentucky Department of Economic Development, Kentucky Directory of Selected Industrial Services, 1983; Division of Research and Planning.

ESTIMATED MALE LABOR SUPPLY
COLUMBIA LABOR MARKET AREA

<u>Area</u>	<u>Current</u>			<u>Not in Labor Force</u>	<u>Future</u>
	<u>Total</u>	<u>Unemployed</u>	<u>Under- employed</u>		<u>Becoming 18 years of age 1984 thru 1988</u>
Labor Market					
Area*	5,750	2,975	1,940	835	3,865
Adair	716	427	289	0	660
Casey	912	514	325	73	666
Cumberland	602	289	313	0	272
Green	511	369	142	0	430
Metcalfe	433	286	147	0	410
Russell	1,542	511	269	762	570
Taylor	1,034	579	455	0	857

* Additional workers may be drawn from other nearby counties.

Note: Unemployed - persons unemployed and actively seeking work;
Underemployed - persons employed but working only 14 to 26 weeks per year;
Not in Labor Force - represents the number of persons who would enter the labor force if suitable employment were available (based on the assumption that persons in Kentucky would like to participate in the labor force in the same proportion that they do nationally).

Sources: Kentucky Cabinet for Human Resources, Kentucky Labor Supply Estimates by Area Development District and County, 1982. Kentucky Department of Economic Development, Future Labor Supply Becoming 18 Years of Age, 1984 thru 1988.

ESTIMATED FEMALE LABOR SUPPLY
COLUMBIA LABOR MARKET AREA

Area	Current			Not in Labor Force	Future
	Total	Unemployed	Under- employed		Becoming 18 years of age 1984 thru 1988
Labor Market					
Area*	3,989	1,530	1,477	982	3,853
Adair	451	267	184	0	646
Casey	1,109	260	256	593	662
Cumberland	251	126	125	0	303
Green	529	171	171	187	426
Metcalfe	538	243	93	202	416
Russell	510	258	252	0	572
Taylor	601	205	396	0	828

* Additional workers may be drawn from other nearby counties.

Note: Unemployed - persons unemployed and actively seeking work;
Underemployed - persons employed but working only 14 to 26 weeks per year;
Not in Labor Force - represents the number of persons who would enter the labor force if suitable employment were available (based on the assumption that persons in Kentucky would like to participate in the labor force in the same proportion that they do nationally).

Sources: Kentucky Cabinet for Human Resources, Kentucky Labor Supply Estimates by Area Development District and County, 1982. Kentucky Department of Economic Development, Future Labor Supply Becoming 18 Years of Age, 1984 thru 1988.

AVERAGE WEEKLY WAGES BY INDUSTRY,
BY PLACE OF WORK, 1982

	<u>Adair County</u>	<u>Casey County</u>	<u>Cumberland County</u>	<u>Green County</u>
All Industries	\$207.06	\$185.09	\$178.61	\$212.31
Mining & Quarrying	317.55	*	207.92	*
Contract Construction	239.30	220.34	174.68	219.94
Manufacturing	197.99	155.36	154.25	217.65
Transportation, Communications & Public Utilities	201.61	365.24	160.63	*
Wholesale & Retail Trade	151.73	147.23	207.37	152.10
Finance, Insurance & Real Estate	277.88	243.20	219.39	238.18
Services	173.14	142.71	156.89	138.00
State/Local Government	278.61	245.00	229.93	233.96
Other	119.21	*	*	*
	<u>Metcalfe County</u>	<u>Russell County</u>	<u>Taylor County</u>	
All Industries	\$174.74	\$179.58	\$229.11	
Mining & Quarrying	*	*	237.13	
Contract Construction	115.20	246.70	233.18	
Manufacturing	146.67	167.05	238.15	
Transportation, Communications & Public Utilities	315.90	*	382.88	
Wholesale & Retail Trade	154.64	142.49	159.93	
Finance, Insurance & Real Estate	191.72	188.89	249.92	
Services	185.01	156.53	182.87	
State/Local Government	222.10	221.22	239.26	
Other	*	138.45	200.07	

* Not disclosed.

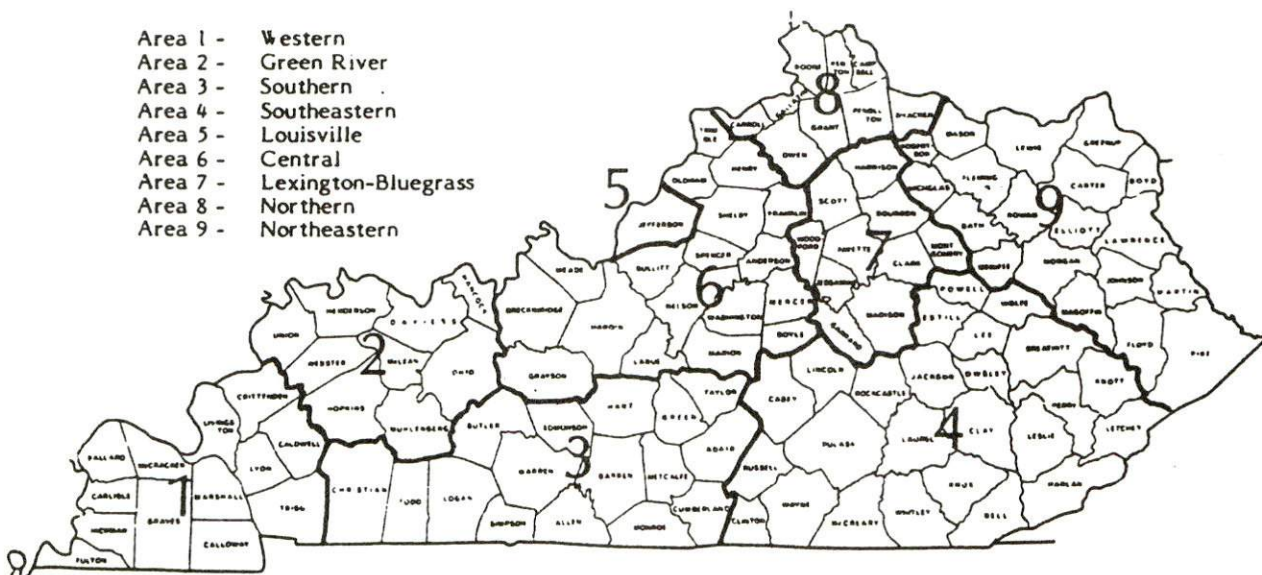
Note: Excludes domestic workers, railway workers, certain nonprofit corporations, majority of federal government workers, and self-employed workers.

Source: Kentucky Cabinet for Human Resources, Average Weekly Wages of Workers Covered by Kentucky Unemployment Insurance Law, 1982.

Occupational wage rates for specific industries are usually not available to most government agencies, and wage data furnished to state employment agencies by individual industrial employers are protected from disclosure by federal law. The most reliable up-to-date wage information can be obtained by direct contact with local employers.

Associated Industries of Kentucky, a voluntary organization of Kentucky businesses, regularly collects occupational wage rates and fringe benefits data from participating member firms. Data are compiled for over 127 clearly defined office, production, and service occupations. Tabulations are published for nine geographical areas of Kentucky, as shown on the map below. It should be noted that the data may be weighted by the preponderance of firms in the larger cities and may be somewhat higher than the rates paid in the smaller communities. Data from these tabulations are available, upon request, from the Kentucky Department of Economic Development, Frankfort, Kentucky 40601.

- Area 1 - Western
- Area 2 - Green River
- Area 3 - Southern
- Area 4 - Southeastern
- Area 5 - Louisville
- Area 6 - Central
- Area 7 - Lexington-Bluegrass
- Area 8 - Northern
- Area 9 - Northeastern



Associated Industries of Kentucky Area Wage Surveys

PER CAPITA PERSONAL INCOME

<u>Area</u>	<u>1977</u>	<u>1981</u>	<u>Percent Change</u>
Adair County	\$ 3,657	\$ 5,745	57.1
Labor Market Area Range	\$3,121 - 4,840	\$ 4,839 - 7,221	N/A
Kentucky	5,797	8,416	45.2
U. S.	6,984	10,495	50.3

Source: U. S. Bureau of Economic Analysis, Kentucky Economic Information System, May 1983.

TRANSPORTATION

Rail

The nearest rail service is provided by Seaboard System Railroad at Campbellsville, 19 miles north of Columbia.

Services at Campbellsville - Branch line; turnaround service one day each week; switching services; team track space for 10 cars; nearest piggyback facilities maintained by Southern Railway System in Danville, 63 miles northeast of Columbia

For details on routing, schedules, rates, and services, contact:

Manager of Industrial Development
Seaboard System Railroad
P.O. Box 32290
Louisville, Kentucky 40232
(502) 587-5228

Highways

The Cumberland Parkway serves Columbia with an interchange one mile south of the city. The Cumberland Parkway connects with Interstate 65 approximately 50 miles west of Columbia. Other highways serving Columbia include Kentucky Route 80, a "AAA"-rated (80,000-pound gross load limit) trucking highway; Kentucky 55, which is "AAA"-rated north of the city, and "AA"-rated (62,000-pound gross load limit) south of the city; and Kentucky 61, 206, and 551 - all "AA"-rated trucking highways.

Truck Service

<u>Company</u>	<u>Home Office</u>
American Freight System, Inc.*	9393 West 110th Street Overland Park, Kansas 66210
Central Motor Express, Inc.**(T)	Campbellsville, Kentucky 42718
Manning Motor Express, Inc.**	Glasgow, Kentucky 42141
Overnite Transportation Company*	1000 Semmes Avenue, P.O. Box 1216 Richmond, Virginia 23209
Smith's Transfer Corporation**	P.O. Box 1000 Staunton, Virginia 24401

(T) Local terminal.

* Interstate service only.

** Interstate and intrastate service.

Source: American Motor Carrier Directory, Spring 1984.

Other Freight ServicesNearest Office or Shipping Center

Emery	Lexington, 101 miles northeast; Louisville, 105 miles north
Federal Express	Lexington, 101 miles northeast; Louisville, 105 miles north
KATO Express, Inc. (air cargo service)	Elizabethtown, 90 miles northwest
Purolator Courier	Lexington, 101 miles northeast; Louisville, 105 miles north
United Parcel Service	Campbellsville, 19 miles north

**HIGHWAY MILES AND TRUCK TRANSIT TIME IN DAYS FROM
COLUMBIA, KENTUCKY, TO SELECTED MARKET CENTERS**

City	Highway Miles	Delivery	City	Highway Miles	Delivery
		Time TL			Time TL
Atlanta, Ga.	365	1	Los Angeles, Ca.	2,156	3
Baltimore, Md.	642	2	Louisville, Ky.	105	1
Birmingham, Ala.	327	1	Nashville, Tenn.	131	1
Chicago, Ill.	397	1	New Orleans, La.	648	2
Cincinnati, Ohio	185	1	New York, N. Y.	804	2
Cleveland, Ohio	418	1	Pittsburgh, Pa.	444	1
Detroit, Mich.	438	1	St. Louis, Mo.	348	1
Knoxville, Tenn.	172	1			

Note: Mileage computations are via the best interstate or primary highways, not necessarily the most direct route of travel.

Sources: Rand McNally Road Atlas, 1979. Official Kentucky Mileage Map, 1980.
Delivery time - Manning Motor Express, Inc., P.O. Box 14503, Louisville, Kentucky 40214.

AirLocal

Location:	Columbia-Adair County Airport*
Runways:	2.5 miles southwest of Columbia
Length:	1 paved
Traffic:	2,600 feet
Control:	Wind sock, tetrahedron
Lighting:	Rotating beacon, radio-activated MIRL
Services:	80 octane, taxi, visitors' parking, air charter and hangars
Air Freight Service:	Chartered air freight services must be arranged

(Cont'd)

* Construction of additional hangars is planned.

Nearest Scheduled Commercial Airline Service

Location: Blue Grass Field
5 miles west of Lexington, Kentucky;
96 miles northeast of Columbia

Runways: 2 paved
Length: 6,500 feet; 3,500 feet

Traffic Control: Tower

Lighting: Approach lighting system, beacon, runways and
obstructions lighted, VASI

Services: Delta, Frontier, Piedmont, United, USAir, Comair, Tennessee
Airways, Allegheny Commuter; fuel - 100LL and jet-A;
hangars, tie-downs; major A & P repairs, major Avionics
repairs; APU, charter, flight instruction, oxygen,
plane rentals, survival equipment; taxi, limousine,
car rentals, courtesy car; weather information;
restaurant, snack bar

Air Freight Service: Air freight terminal

Bus - Southern Greyhound Bus Lines

Taxi - One taxicab company provides 24-hour service, seven days per week, with two radio-dispatched taxicabs.

Rental Services - Auto rental and bus rental services are available. Truck and trailer rental services are available at Campbellsville, 19 miles north of Columbia.

Water

The nearest navigable waterway is the Kentucky River at Frankfort, 98 miles north of Columbia. A six-foot navigation channel is maintained on the Kentucky River beginning at Frankfort.

POWER AND FUEL

Electricity

Company serving **Columbia and parts of Adair County** - Kentucky Utilities Company

Source of power - Kentucky Utilities Company

Total generating capacity - 2,639,100 KW*

For industrial rates contact:

Industrial Development Department
Kentucky Utilities Company
One Quality Street
Lexington, Kentucky 40507
(606) 255-1461

Company serving major portion of **Adair County** - Taylor County Rural Electric Cooperative Corporation

Source of power - East Kentucky Power Cooperative

Total generating capacity - 1,304,000 KW**

For industrial rates contact:

Industrial Development Division
East Kentucky Power Cooperative
P.O. Box 707
Winchester, Kentucky 40391
(606) 744-4812

Natural Gas

Company serving **Columbia** - Columbia Utilities Commission

Source of supply - Texas Eastern Transmission Corporation

Size of transmission mains - 36 inches (supplier); 3 inches (distributor)

Distribution mains - 1 through 4 inches

Distribution pressure - 7 to 19 psi

Btu content - 1,000 per cubic foot

Specific gravity - 0.60

For rates and supplies contact:

Columbia Utilities Commission
City Hall
Columbia, Kentucky 42728
(502) 384-2006

* A new generating unit is under construction in Carroll County. Due to be completed in 1984, the unit will have a generating capacity of 511,000 KW.

** East Kentucky Power Cooperative's total generating capacity will be increased when a new 600,000 KW coal-fired generation plant is completed in southeast Clark County in 1992.

Other Fuels

Propane

Buckeye Gas Products Company
(bulk plant)
Russell Road
Columbia, Kentucky 42728

Shively's Sales & Service
(bulk plant)
Route 1, Box 527
Highway 55 North
Columbia, Kentucky 42728

Fuel oils

Distillate fuel oil -

Ashland Petroleum Company
(bulk plant)
P.O. Box 280
Russell Springs, Kentucky 42642

K.I. Riddle, Inc. (bulk plant)
706 Burkesville Street
P.O. Box 446
Columbia, Kentucky 42728

Hill Oil Company
802 East Highway 80
Columbia, Kentucky 42728

Sexton Oil Company
Sandusky Street
Columbia, Kentucky 42728

Residual fuel oil - Arrangements must be made with the refinery.

Low sulphur content coal - Available in Kentucky.

WATER AND SEWERAGE

Public Water Supply

Company serving **Columbia** - Columbia Utilities Commission
City Hall
Columbia, Kentucky 42728
(502) 384-2006

Source - Russell Creek
Treatment plant capacity - 1,000,000 gallons per day
Average daily consumption - 500,000 gallons
Peak daily consumption - 680,000 gallons
Type treatment - Sedimentation, filtration, coagulation, chlorination
Storage capacity - 839,000 gallons
Size lines - 2, 4, 6 and 8 inches
Average pressure - 30 psi
Average temperature - 55 degrees F.

MONTHLY WATER RATES

First	3,000 gallons	\$ 5.00 (Minimum)
Next	7,000 gallons	1.25 per M gallons
Next	10,000 gallons	1.15 per M gallons
Next	10,000 gallons	1.05 per M gallons
Next	10,000 gallons	1.00 per M gallons
Next	10,000 gallons	.85 per M gallons
All over	50,000 gallons	.65 per M gallons

Tap-on charge:	5/8- x 3/4-inch meter	\$150
	1-inch meter	200
	1 1/2-inch meter	300
	2-inch meter	400
	4-inch meter	800

Name of water district - Adair County Water District
101 Reed Street
Columbia, Kentucky 42728
(502) 384-4096

Area served - Adair County
Date when water district began operating - June 1975
Source of supply of treated water - Columbia Utilities Commission
Average amount of water used in a 24-hour period - 162,000 gallons
Peak amount of water used in a 24-hour period - 250,000 gallons
Storage capacity - 925,000 gallons
Average pressure - 45 psi
Average temperature - 45 degrees F.
Size lines - 6 and 8 inches

(Cont'd)

MONTHLY WATER RATES

5/8-inch x 3/4-inch meter

First	2,000 gallons	\$ 7.50 (Minimum)
Next	3,000 gallons	2.60 per M gallons
Next	5,000 gallons	2.30 per M gallons
Next	15,000 gallons	2.00 per M gallons
Over	25,000 gallons	1.30 per M gallons

3/4-inch meter

First	3,000 gallons	\$ 10.10 (Minimum)
Next	2,000 gallons	2.60 per M gallons
Next	5,000 gallons	2.30 per M gallons
Next	15,000 gallons	2.00 per M gallons
Over	25,000 gallons	1.30 per M gallons

1-inch meter

First	5,000 gallons	\$ 15.30 (Minimum)
Next	5,000 gallons	2.30 per M gallons
Next	15,000 gallons	2.00 per M gallons
Over	25,000 gallons	1.30 per M gallons

1 1/2-inch meter

First	10,000 gallons	\$ 26.80 (Minimum)
Next	15,000 gallons	2.00 per M gallons
Over	25,000 gallons	1.30 per M gallons

2-inch meter

First	16,000 gallons	\$ 38.80 (Minimum)
Next	9,000 gallons	2.00 per M gallons
Over	25,000 gallons	1.30 per M gallons

Tap-on charge:	5/8- x 3/4-inch meter	\$250
	3/4-inch meter	250
	1-inch meter	300
	1 1/2-inch meter	450
	2-inch meter	700

Raw Water

Surface water sources - Russell Creek, Green River Lake

Average discharge - Russell Creek near Columbia, 294 cfs, (43 years, USGS)

Expected ground water yield - 5 to 50 gpm across central Adair County; 5 gpm or less in northern portion of county and along southern and southwestern border of county

Sewerage

Company serving **Columbia** - Columbia Utilities Commission
City Hall
Columbia, Kentucky 42728
(502) 384-2006

Design capacity - 400,000 gallons per day

Average daily flow - 280,000 gallons

Type of treatment - Primary and secondary

Treatment processes - Aeration, clarifier, drying beds

Treated effluent discharged into - Russell Creek

Size of sanitary mains - 6, 8 and 10 inches

Size of storm mains - N/A

Monthly rates - First	3,000	gallons	\$ 6.23 (Minimum)
	Over	3,000	gallons 1.64 per M gallons

Tap-on charge: \$100

CLIMATE

Adair County

Temperature

Normal (30-year record)	59.70 degrees
Average annual 1982	59.00 degrees
Record highest, September 1954 (30-year record)	103.00 degrees
Record lowest, January 1966 (30-year record)	-9.00 degrees
Normal heating degree days (30-year record) (Heating degree day totals are the sums of negative departures of average daily temperatures from 65 degrees F.)	3,478

Precipitation

Normal (30-year record)	46.18 inches
Mean annual snowfall (41-year record)	12.50 inches
Total precipitation 1982	54.70 inches
Mean number days precipitation (.01 inch or more) (40-year record)	127
Mean number days thunderstorms (40-year record)	47

Prevailing Winds (14-year record)

Northeast

Relative Humidity (22-year record)

1 a.m.	80 percent
7 a.m.	85 percent
1 p.m.	59 percent
7 p.m.	63 percent

Source: U.S. Department of Commerce, Environmental Science Services Administration, Climatological Data, 1982. Station of record: Knoxville, Tennessee.

LOCAL GOVERNMENT

City

Structure - Mayor - 4-year term; 6 council members - 2-year terms
 Budget 1983-84 - General Fund \$ 581,865
 Water, Sewer, and
 Gas System 1,150,976
 Fees and licenses - Occupational license fees range from \$25 to \$200;
 manufacturing license - \$75; unloading license - \$30

County

Structure - County Judge/Executive - 4-year term; 7 magistrates - 4-year terms
 Budget 1983-84 - General Fund \$212,229; Road Fund \$415,600

Assessed Value of Property, 1983*

<u>Classes of Property</u>	Columbia	Adair County
Real Estate	\$43,158,180	\$146,877,869
Tangibles	10,232,271	26,955,810

Property Taxes

All property in Kentucky is assessed at 100 percent of fair cash value.

Land and buildings are taxed by the state and may be taxed by local jurisdictions. The state rate is \$0.221 per \$100 of assessed valuation.

Manufacturing machinery, raw materials inventories, pollution control equipment, and goods in the process of manufacture are not subject to local taxation. The state rate is \$0.15 per \$100.

Other tangible personal property owned by manufacturers (automobiles, trucks, finished goods, office furniture, office equipment) is taxed by the state at \$0.45 per \$100 and may be taxed by local jurisdictions.

Intangible personal property located in Kentucky (money in hand, shares of stock, notes, bonds, accounts receivable, and other credits) is taxed by the state at \$0.25 per \$100, and is not subject to local taxation.

Property stored in public warehouses in a transit status is not subject to local taxation. The state rate is only \$0.015 per \$100.

Private leaseholds in industrial facilities owned by cities or counties and financed by industrial revenue bonds are subject to a state tax of \$0.015 per \$100 of value (essentially the lessee's equity, adjusted for appreciation or depreciation). Local taxation is not permitted.

* Excludes Homestead Exemptions.

Combined State and Local Rates Per \$100 Valuation, 1983*
 (100% assessment)

	<u>Site Inside City of Columbia</u>	<u>Site Inside Unincorporated Adair County</u>
1. Land and buildings	\$0.984	\$0.674
2. Mfg. machinery, raw materials, goods in process, pollution control equipment	0.150	0.150
3. Finished goods, office equipment, vehicles, other tangibles	1.239	0.929
4. Intangibles (accounts rec., notes, bonds, etc.)	0.250	0.250
5. Property stored in public warehouses in a transit status	0.015	0.015
6. Leaseholds in industrial revenue bond financed plants	0.015	0.015

Planning and Zoning

City agency - Columbia Planning Commission

Zoning enforced - Within city of Columbia

Subdivision regulations enforced - Within city of Columbia

Local codes enforced - Building and housing

Mandatory state codes enforced - Kentucky Plumbing Code, National Electric Code, Kentucky Boiler Regulations and Standards, Kentucky Building Code (modeled after BOCA code)

Safety

Police	Columbia	Adair County
Total staff	5 full time 1 part time	3
Radio-patrol cars	2	3

The Bureau of State Police Post #15 is located at Columbia. The staff includes 27 road troopers, 6 supervisors, 6 detectives and 1 arson investigator.

Fire

Insurance Services Office, Public Protection Classification	7	10
Volunteers	20	20

Rescue Service

Adair County Unit of Disaster and Emergency Services, Kentucky Association of Rescue Squads:

Number of volunteers - 80

Equipment - 1 panel truck, 1 ambulance-personnel carrier, 1 heavy-duty truck, 3 four-wheel-drive vehicles, portable kitchen, air compressor, 3 boats, air pumps, scuba equipment for 7 people, two-way radio system, porta-power, cutting equipment for wood and metal, first aid supplies, resuscitators, winches, dragging equipment, ropes, axes, shovels, tools, stretchers, blankets, emergency lighting equipment, severe-weather shelter, other necessary rescue equipment, scanners set up with Lake Cumberland Control, personal paging systems for 15 members

Personnel training - Disaster and emergency training, first aid, Red Cross scuba diving certification class, cardiopulmonary resuscitation, hazardous materials training, nuclear training

Refuse Collection and Disposal

	Columbia
Type service	Municipal
Fee charged:	
residential	\$4.00 per month
business	By contract
industrial	By contract
Collection frequency:	
residential	Weekly
business	By contract
industrial	By contract
Trash pickup	Daily
Disposal method	Landfill

Private firms may be contracted to provide refuse disposal in Adair County.

EDUCATION

Public Schools

Adair County*

Total Enrollment (Fall, 1983)	2,801
Elementary	1,264
Middle School	716
High School	821
Student-Teacher Ratio	18-1
Elementary	17-1
Middle School	19-1
High School	17-1
Percent High School Graduates to College (1983)	49.1
Expenditures Per Pupil (1982-83)	\$ 1,518.20
Bonded Indebtedness (June 30, 1983)	\$879,000.00

* Construction of a new computer science building on the Adair County High School campus was completed in 1983. Planned improvements include the renovation of the original portion of the high school, and the construction of a building for vocational education.

Area Colleges and Universities

<u>Name</u>	<u>Location (Miles distant)</u>	<u>Enrollment (Fall, 1983)</u>	<u>Highest Degree Conferred</u>
Lindsey Wilson College	Columbia	465	Associate
Campbellsville College	Campbellsville (19)	701	Baccalaureate
Somerset Community College	Somerset (42)	1,079	Associate
St. Catharine College Elizabethtown	Springfield (47)	201	Associate
Elizabethtown Community College	Elizabethtown (60)	2,259	Associate
Centre College	Danville (63)	762	Baccalaureate
Western Kentucky University	Bowling Green (70)	12,666	Masters, Specialist*

Lindsey Wilson College

Lindsey Wilson College was established in Columbia in 1903, and through the years, the goals of the college have become well defined.

Lindsey Wilson strives to provide a thorough academic education, as well as purposeful Christian attitudes. It endeavors to bring young men and women together from various backgrounds and give them a college education at a moderate cost. A flexible curriculum is strived for which is consistent with the needs of students who plan to enter the job field after two years of college, as well as those who plan to transfer to a four-year college at the end of two years. Lindsey Wilson also wants to create a mutual awareness and appreciation between the college and the area it serves.

* Joint doctoral degree programs are offered in cooperation with the University of Kentucky, Lexington, and cooperative doctoral degree programs are offered with the University of Louisville. The degrees are issued by the University of Kentucky or the University of Louisville.

Vocational Schools

Both the state vocational-technical schools and the area vocational education centers are operated by the Kentucky Department of Education. The state vocational-technical schools enroll persons full time who are at least 16 years of age and not in school. These students attend classes for six hours each day. The area vocational education centers are designed to accommodate high school students who are at least 15 years of age. These students attend vocational school for three hours each day. The state vocational-technical schools and the area education centers offer evening courses to enable working adults to upgrade current job skills.

Nearest State School

Location	Somerset State Vocational- Technical School
Miles Distant	Somerset 42
Curriculum	Business and Office Accounting/Jr. Management Clerical Data Processing Secretarial Health and Personal Services Occupations Health Careers Licensed Practical Nursing Industrial Education Appliance Repair Auto Body Repair Auto Mechanics Aviation Maintenance Technician Diesel Mechanics Drafting (with CAD/CAM) Graphic Arts (Printing) Machine Shop Industrial Electronics Welding Computer Literacy Learning Resource Center

(Cont'd)

Nearest Area Education Center

Location	Russell County Area Vocational Education Center
Miles Distant	Russell Springs 13
Curriculum	Business and Office Health and Personal Services Occupations Health Careers Industrial Education Auto Mechanics Carpentry Residential Electricity Welding

Arrangements can be made to provide training in the specific production skills required by an industrial plant. Instruction may be conducted either in the vocational school or in the industrial plant, depending upon the desired arrangement and the availability of special equipment.

HEALTH

Local Medical Personnel

Physicians - 6 medical doctors full time, 2 part time; 4 surgeons; 2 ophthalmologists
Dentists - 5; 1 orthodontist part time
Chiropractors - 3

Hospitals

<u>General Hospital</u>	<u>Location</u>	<u>Beds</u>
Westlake Cumberland Hospital	Columbia	65

General hospital facilities - Operating room, delivery room, emergency rooms, nursery, X-ray, laboratory, pharmacy, cardiopulmonary services, dietetic services

Medical staff - 17 physicians on active staff representing general surgery, vascular surgery, internal medicine, family practice, endocrinology, obstetrics, pediatrics, radiology, pathology, dentistry, and oral surgery; consulting services in urology and orthopedics; 24 registered nurses, 14 licensed practical nurses

Other Medical Facilities

Lake Cumberland Comprehensive Care Center

Ambulance Service

Name - Adair County Ambulance Service

Staff - 14 emergency medical technicians full time (includes 1 licensed paramedic and 1 graduate paramedic); 2 emergency medical technicians part time

Service - 24-hour, county-wide service

Equipment - 3 fully equipped ambulances, 1 ambulance equipped with a "Jaws of Life" rescue apparatus and additional rescue equipment

Public Health

Facility - Adair County Health Center of Lake Cumberland District Health Department

Staff - 1 health environmentalist, 1 registered nurse, 1 community health worker, 2 clerks

OTHER LOCAL FACILITIES

Communications

Telephone - Services -	General Telephone Company Standard
Telegraph - Services -	Western Union Toll-free number, 1-800-325-5100
Postal - Class - Mail received - Mail dispatched -	U.S. Post Office First Once daily Once daily
Newspapers - Daily and circulation - Weekly and circulation - Other papers received from -	The Daily Statesman - 2,983 Adair County News - 3,193 Campbellsville, Lexington, Louisville, and Russell Springs, Kentucky
Radio - Stations received from -	WAIN-AM and FM Bowling Green, Lexington, and Louisville, Kentucky; Nashville, Tennessee
Television - Cable service Reception from -	Channel 34, WGRB (Green River Broadcasting) Bowling Green, Lexington, and Louisville, Kentucky; Nashville, Tennessee; Atlanta, Georgia; HBO
Kentucky Educational Television -	Elizabethtown transmitter, Channel 23

Library Services

The Lake Cumberland Regional Headquarters Library is located at the Adair County Public Library facility.

Public library - Adair County Public Library

Size collection - 30,951 volumes

Circulation, 1982-83 - 57,793

Services - Story hours; telephone reference services; services to shut-ins, blind, and handicapped; general reading lists (special subjects upon request); bookmobile; reading guidance and reference assistance; research center; audiovisual equipment, films, records, and filmstrips; community, state, and national interagency referral; special programs (summer reading and other programs); games; framed prints; special programs presented for organizations upon request; tours for groups; program planning based on community resources; service to local hospitals and convalescent homes; copying service (minimum fee); Interlibrary Loan

College library - Katie Murrell Library, Lindsey Wilson College

Size collection - 26,090 volumes

Services - Periodicals, books, and other publications such as catalogs; audio-visual equipment and materials; phonograph records; telephone reference services; reading guidance and reference assistance; general reading list; reference work; Interlibrary Loan; comprehensive document retrieval service; microforms; copy service

Special library - Dora Lee Eubank Wright Research Center

Size collection - 1,100 volumes

Services - Genealogical research service (minimum fee)

Religious Institutions

Denominations - Assembly of God
 Baptist
 Brethren in Christ
 Catholic
 Christian
 Church of Christ
 Church of God
 Episcopal
 Methodist
 Nazarene
 Presbyterian
 Seventh Day Adventist

Nearest Synagogues - Lexington, 101 miles northeast

Congregations - Adath Israel (reform)
 Ohavey Zion (traditional)

Financial Institutions

<u>Banks</u>	<u>Assets</u>	<u>Deposits</u>	<u>Statement Date</u>
Bank of Columbia	\$ 28,073,104.41	\$ 24,251,433.96	12/31/83
First National Bank	15,302,000.00	12,548,000.00	12/31/83
<u>Savings and Loan Associations</u>	<u>Assets</u>	<u>Savings Accounts</u>	<u>Statement Date</u>
First Federal Savings and Loan Association*	\$ 140,832,378.00	\$ 126,723,036.00	12/31/83

Hotels and Motels

Total number - 3
Total rooms - 50

* Represents total assets and savings accounts of First Federal Savings and Loan Association offices in Columbia, Campbellsville, Edmonton, Greensburg, Jamestown and Somerset.

Clubs and Organizations

Adair County Bell Pepper Festival
Committee
Adair County Council on Aging
Adair County Fair Board
Adair County Heritage Association
Adair County High Athletic Boosters
Adair County High Band Boosters
Adair County Historical Society
Adair County Ministerial Association
Adair County Purebred Livestock
Association
Adair County Red Cross
Adair County Volunteer Fire
Department
Agriculture Council
American Legion
American Legion Auxiliary
Beta Club
Boy Scouts
Business and Professional Women's
Club
Columbia-Adair County Chamber of
Commerce
Columbia-Adair County Jaycees
Columbia Baptist Youth Choir
Columbia Cares
Columbia Community Choir
Cub Scouts
Daughters of the American
Revolution
Dental Society
Dora Lee Eubank Wright Research
Center
Eastern Star
4-H
Friends of the Adair County
Public Library
Future Business Leaders of
America (FBLA)
Future Farmers of America (FFA)
Future Homemakers of America
(FHA)
Future Teachers of America
Gideons International
Girl Scouts
Homemakers
Independent Senior Citizens
Inter-Agency Council
Key Club
Kiwanis
Lindsey Wilson College Alumni
Association
Lions
Little League
Masonic Lodge
Medical Society
Miss Lake Cumberland Scholarship
Committee
National Association for the
Advancement of Colored People
(NAACP)
Pony League
Retail Merchants Association
Retired Teachers
Rotary
Sportsman Club
Veterans of Foreign Wars (VFW)
Westlake Cumberland Hospital Women's
Auxiliary
Woman's Club
Wonderland CB Club

RECREATION

Local

Columbia offers a variety of recreational facilities and activities. Public facilities available include a park, tennis courts, playgrounds, and four ball fields with a very active schedule of both softball and baseball leagues. There are also church leagues and open leagues for adults in softball and volleyball. Plans are being made for a new mini-park facility in Columbia. The fairgrounds offer a swimming pool, a wading pool, basketball courts, tennis courts, a baseball/softball field, a picnic area, croquet courts, a track, and a playground. A football field, softball field, and track are available at Adair County High School.

A private country club in Columbia provides a golf course and swimming pool to its members. Columbia also has an indoor movie theater, a drive-in movie theater, and an amphitheater at Lindsey Wilson College. Various dances, including square dances, are organized throughout the year by different groups.

The Christian Life Center was completed in 1980 and consists of facilities for baseball, softball, basketball, and many other outdoor and indoor sports and recreational activities. There are future plans for the construction of a swimming pool at the center.

The Bell Pepper Festival is held annually during the second week in September and recognizes the bell pepper growers of the area. The festival includes displays, parades, arts and crafts exhibits, games, a beauty pageant and a concert.

The largest volunteer activity in Adair County is the Miss Lake Cumberland Scholarship Pageant which is held in Columbia in April of each year. Over \$3,500 in scholarships was given at the 1984 pageant.

Columbia is also the home of the Adair County Fair; the Mark Twain Marching Band Festival; the June Dairy Day; the Fourth of July Celebration; the Lindsey Wilson College Madrigal Dinner; and the Buy, Swap, Sell, and Trade Day on Labor Day.

Another special attraction in Columbia is the Trabue-Russell House which is a historical preservation project of the Adair County Heritage Association. One of the largest rose garden memorials in Kentucky is located at the house.

Area (Within 50 miles)

Green River Lake State Park near Campbellsville, 16 miles north of Columbia, is made up of 1,300 acres surrounding an 8,200-acre lake. The park is open year-round and offers 96 campsites, a beach, boat docks, fishing, and a picnic area.

Lake Cumberland State Resort Park near Jamestown, 32 miles southeast of Columbia, is a 3,000-acre park located on the 50,000-acre Lake Cumberland, which sports excellent bass, bluegill, and crappie fishing. The park features a modern 48-room resort lodge perched on a high bluff above the lake. The lodge has a swimming pool, a dining room, a gift shop, and a multi-purpose activities center. Other park facilities include an additional swimming pool, riding stables, tennis courts, hiking trails, a 9-hole golf course, miniature golf, a picnic area, and a playground. A marina offers houseboats, and fishing boats and motors for rent plus year-round launching ramps.

Dale Hollow Lake State Park, 38 miles south of Columbia, is located alongside 48 square miles of surface water in southeastern Cumberland County. Park facilities include a marina, a picnic area, and 144 sites for tent and trailer camping. Dale Hollow Lake straddles the Kentucky-Tennessee state line. Several private recreation facilities are located near the lake.

Abraham Lincoln Birthplace National Historic Site, located 47 miles northwest of Columbia near Hodgenville, features the log cabin which was the birthplace of Abraham Lincoln, enclosed within a granite memorial shrine. The grounds include 116 acres of the original Thomas Lincoln farm and a visitors' center with audiovisual programs and exhibits on the Lincoln family.

Old Mulkey Meeting House State Shrine, 48 miles southwest of Columbia near Tompkinsville, offers picnic areas and playgrounds. The house was built in 1804, and is the oldest log meeting house in the state. Daniel Boone's sister is buried in the graveyard and authentic records written in pokeberry ink are on display.

Barren River Lake State Resort Park, 50 miles southwest of Columbia near Glasgow, is a full-facility resort park offering a 51-room resort lodge, a coffee shop, 12 cottages, a lodge pool, a beach, riding stables, nature trails, open and covered boat slips, a 9-hole golf course, lighted handball and tennis courts, shuffleboard, park camping with a service building, a restaurant, fishing and pleasure boat rentals, picnic areas, and a playground. Barren River Lake, which covers 10,000 acres, is a popular area for skiing, sailing, fishing, and swimming.

General Burnside State Park, 50 miles east of Columbia, is Kentucky's only island state park. Rising out of Lake Cumberland and surrounded by beautiful Kentucky mountains, the park offers excellent fishing, an 18-hole golf course which is open year-round, a picnic area, a 161-site camping area for tents and recreational vehicles, a marina on the mainland near the park, and recreation.

COMMUNITY IMPROVEMENTS

Recent

Oshkosh B'Gosh, Inc., completed a \$1,000,000 expansion project in early 1984. A 22,400-square-foot building was purchased to increase space for the children's casual clothing line being produced. The expansion project increased employment by 200 persons.

A radio-activated lighting system was added to the Columbia-Adair County Airport recently.

Lindsey Wilson College completed a new \$275,000 student union building in late 1983. The facility has recreational areas for students, a snack bar and dining area, a student life office, and offices for the athletic director and the campus radio program. Other projects completed by the college in 1983 include construction of a new \$125,000 wing for the men's dormitory, renovation of the college president's home, and the remodeling of the dining hall.

A new computer science building was constructed on the Adair County High School campus in 1983. The project was completed with volunteer labor and donated materials, and a \$20,000 education grant for furnishings.

Under Way

Oshkosh B'Gosh, Inc., began an expansion project at its original location in mid 1984. Approximately \$1,000,000 will be invested in new equipment and construction. Completion is scheduled for 1985.

A new shopping center is scheduled to open in 1984. The shopping center complex is being constructed on a 20-acre site.

Construction of a new 15,000-square-foot gymnasium at Lindsey Wilson College is scheduled to be completed in late 1984. Facilities will include an athletic complex with theater-type seating for 1,000 persons, dressing rooms, a laundry and a concession area. The college has also received a \$150,000 grant for the installation of an administrative computer system and the upgrading of the school's business curriculum.

Planned

Plans are being made to construct a new sewage treatment plant for Columbia. The present plant would be used as a pump station.

Construction of additional hangars is planned at the Columbia-Adair County Airport.

Among the projects planned by the Adair County School System are the renovation of the original portion of the high school and the construction of a new vocational education building.



THE UNIVERSITY OF CHICAGO PRESS
50 EAST LAKE STREET
CHICAGO, ILLINOIS 60607
TEL: 773-936-3636
WWW.UCHICAGO.PRESS.EDU