

1982

Industrial Resources: Anderson County - Lawrenceburg

Kentucky Library Research Collections
Western Kentucky University, spcol@wku.edu

Follow this and additional works at: https://digitalcommons.wku.edu/anderson_cty

 Part of the [Business Administration, Management, and Operations Commons](#), [Growth and Development Commons](#), and the [Infrastructure Commons](#)

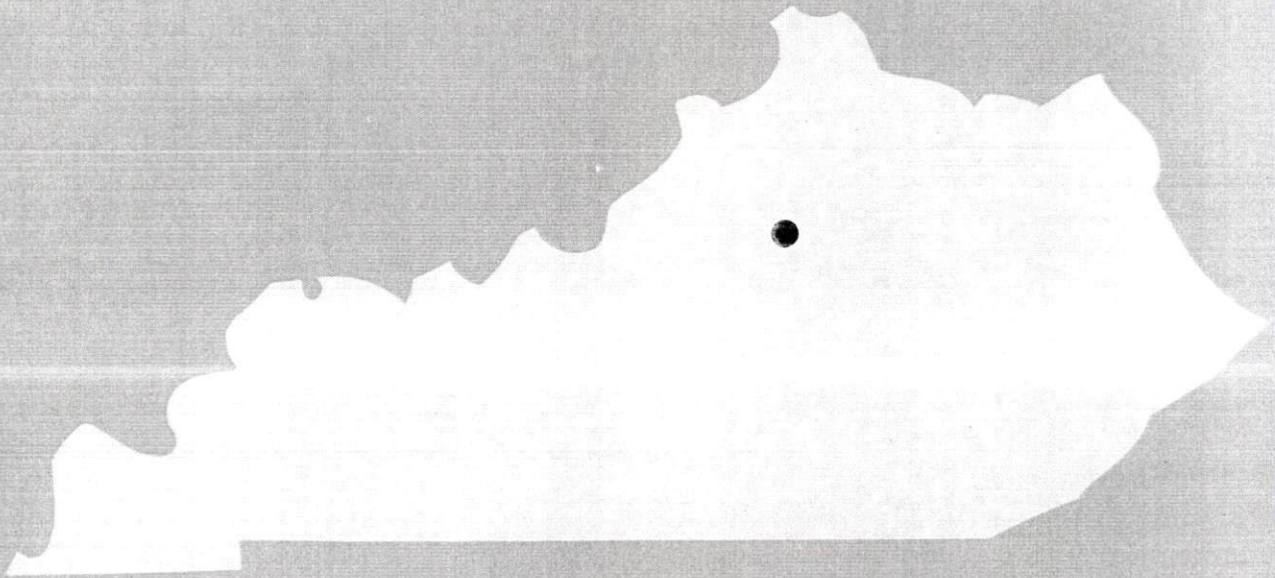
Recommended Citation

Kentucky Library Research Collections, "Industrial Resources: Anderson County - Lawrenceburg" (1982). *Anderson County*. Paper 15. https://digitalcommons.wku.edu/anderson_cty/15

This Report is brought to you for free and open access by TopSCHOLAR®. It has been accepted for inclusion in Anderson County by an authorized administrator of TopSCHOLAR®. For more information, please contact topscholar@wku.edu.

Anderson County

A comprehensive
report on
Lawrenceburg, Ky.



KENTUCKY & CO.
The state that's run like a business.

LAWRENCEBURG, KENTUCKY

Industrial Sites --- 1982

For more information contact the Department of Economic Development, Office of Business Development, Industrial Development Division, Capital Plaza Tower, Frankfort, Kentucky 40601 (502-564-7140).

Existing Industries

- A Florida Tile Industries
- B Reliance Electric Co. (Storage)
- C General Cable Co.
- D Edwards Sausage Co., Inc.
- E Kraft Inc.
- F Universal Fasteners Inc.

Site 182 - 100 Acres

Site 282 - 70 Acres

Site 382 - 220 Acres

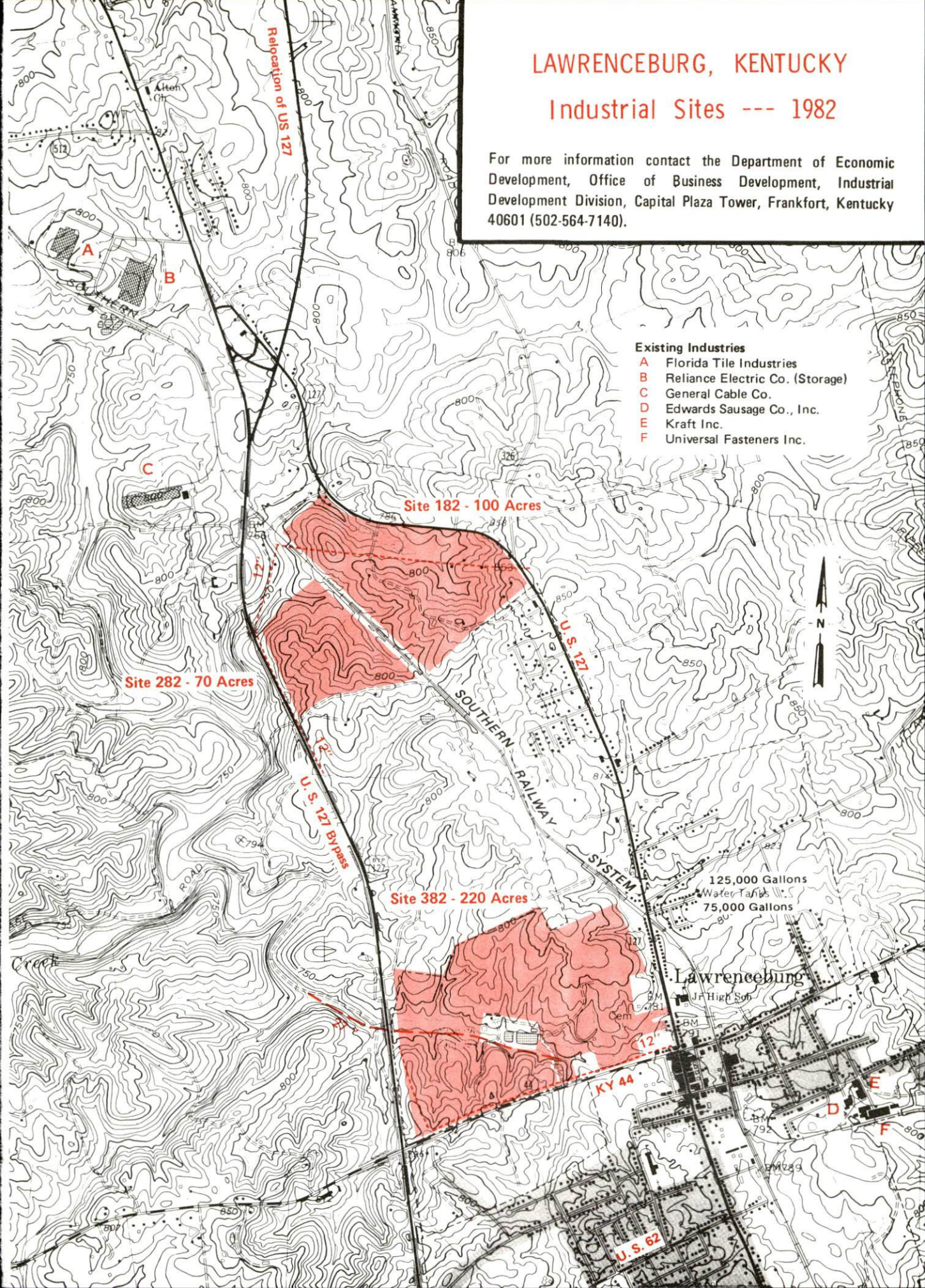
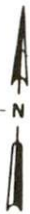
125,000 Gallons
Water Tanks
75,000 Gallons

Lawrenceburg

Jr High Sch

KY 44

U.S. 62



Site 182 - 100 Acres

PEACH INDUSTRIAL PARK (Planned Development)

LOCATION: Adjacent to northern city limits

ZONING: Industrial

HIGHWAY ACCESS: U. S. 127 adjacent to northern boundary

RAILROAD: Southern Railway System adjacent to southwest boundary

WATER: Lawrenceburg Water and Sewer Department

Size Line: 12-inch line serves the site

NATURAL GAS: Western Kentucky Gas Company

Size Line: 6-inch line approximately 700 feet west along west side of U. S. 127 Bypass

ELECTRICITY: Kentucky Utilities Company

SEWERAGE: Sewer service contingent upon construction of Alton sewage collection system and new Lawrenceburg municipal sewage treatment plant scheduled for completion by Fall 1983

OWNERSHIP: Harold Peach

Site 282 - 70 Acres

ANDERSON COUNTY INDUSTRIAL PARK (Planned Development)

LOCATION: Approximately 1000 feet from northern city limits

ZONING: Industrial

HIGHWAY ACCESS: U. S. 127 Bypass approximately 150 feet from southwest boundary

RAILROAD: Southern Railway System adjacent to northeast boundary

WATER: Lawrenceburg Water and Sewer Department

Size Line: 12-inch line adjacent to southwest boundary

NATURAL GAS: 6-inch line approximately 200 feet west along west side of U. S. 127 Bypass

ELECTRICITY: Kentucky Utilities Company

SEWERAGE: Sewer service contingent upon construction of Alton sewage collection system and new Lawrenceburg municipal sewage treatment plant scheduled for completion by Fall 1983

OWNERSHIP: Kay-Lorr Associates

Site 382 - 220 Acres

LOCATION: Partially within western city limits

ZONING: Industrial

HIGHWAY ACCESS: U. S. 127 Bypass approximately 200 feet from western boundary; KY 44 adjacent to southern boundary; access to U. S. 127 adjacent to eastern boundary

RAILROAD: Southern Railway System 150 feet from northeastern corner; Right-of-way has not been obtained

WATER: Lawrenceburg Water and Sewer Department

Size Line: 12-inch line along southern and western boundaries

NATURAL GAS: Western Kentucky Gas Company

Size Line: 6-inch line approximately 300 feet away along west side of U. S. 127 Bypass; 4-inch line along east side of U. S. 127

ELECTRICITY: Kentucky Utilities Company

SEWERAGE: Lawrenceburg Water and Sewer Department

Size Line: 27-inch line to be constructed through the site in conjunction with new sewage treatment plant scheduled for completion by Fall 1983

OWNERSHIP: Private

SCALE: 1 inch = 2000 feet

CONTOUR INTERVAL: 10 feet

BASE: USGS 7.5 minute series - 1967
Photorevised - 1978

UTILITIES

----- Water Line
----- Sewer Line

A COMPREHENSIVE REPORT ON
LAWRENCEBURG, KENTUCKY

Prepared by
The Kentucky Department of Economic Development
Division of Research and Planning
in cooperation with
The Anderson County Chamber of Commerce

1982

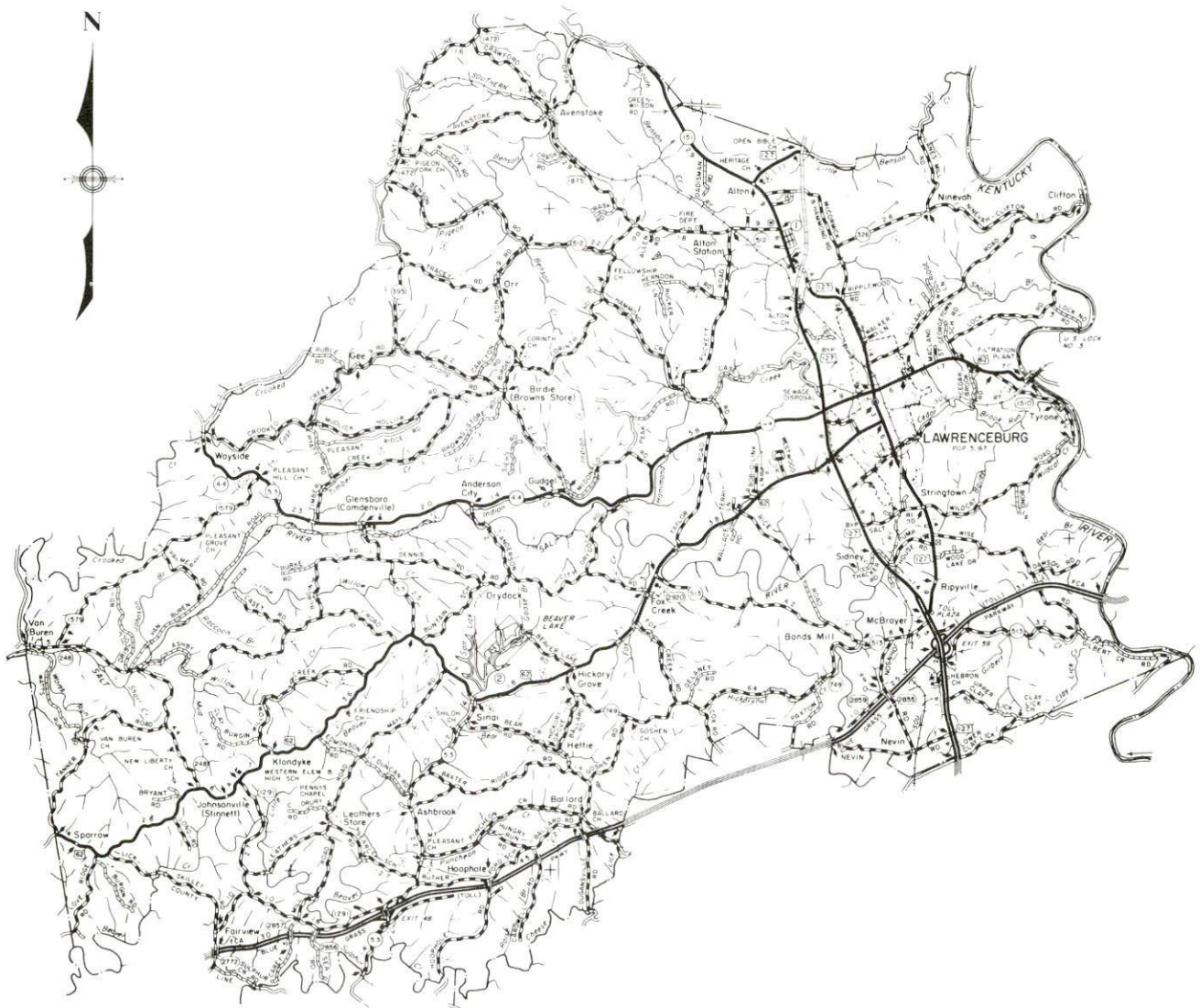
TABLE OF CONTENTS

<u>Chapter</u>	<u>Page</u>
INDUSTRIAL SITES	i
LAWRENCEBURG, KENTUCKY - A RESOURCE PROFILE	1
THE LABOR MARKET AREA	3
Population	3
Labor Force Characteristics of Residents, 1980	3
Estimated Male Labor Supply	4
Estimated Female Labor Supply	4
Lawrenceburg Manufacturing Firms, Their Products and Employment	5
Labor Organizations in Manufacturing Firms	7
Industrial Services	7
Average Weekly Wages by Industry, by Place of Work, 1980	8
Per Capita Personal Income	10
TRANSPORTATION	11
Rail	11
Highways	11
Truck Service	12
Air	15
Bus	15
Taxi	15
Rental Services	15
Water	15
POWER AND FUEL	16
Electricity	16
Natural Gas	17
Other Fuels	17
WATER AND SEWERAGE	18
Water	18
Raw Water	18
Sewerage	19
CLIMATE	20

<u>Chapter</u>	<u>Page</u>
LOCAL GOVERNMENT	21
City	21
County	21
Assessed Value of Property	21
Property Taxes	21
Combined State and Local Rates Per \$100 Valuation, 1981	22
Planning and Zoning	22
Safety	22
Police	22
Fire	22
Rescue Service	23
Refuse Collection and Disposal	23
EDUCATION	24
Public Schools	24
Area Colleges and Universities	25
Vocational Schools	26
HEALTH	29
Local Medical Personnel	29
Hospitals	29
Ambulance Service	29
Public Health	29
OTHER LOCAL FACILITIES	30
Communications	30
Library Services	30
Religious Institutions	31
Financial Institutions	31
Hotels and Motels	31
Clubs and Organizations	32
RECREATION	33

1982 EDITION
GENERAL HIGHWAY MAP
ANDERSON COUNTY
KENTUCKY

PREPARED BY THE
KENTUCKY DEPARTMENT OF TRANSPORTATION
BUREAU OF HIGHWAYS
DIVISION OF PROJECT DEVELOPMENT
IN COOPERATION WITH THE
U.S. DEPARTMENT OF TRANSPORTATION
FEDERAL HIGHWAY ADMINISTRATION

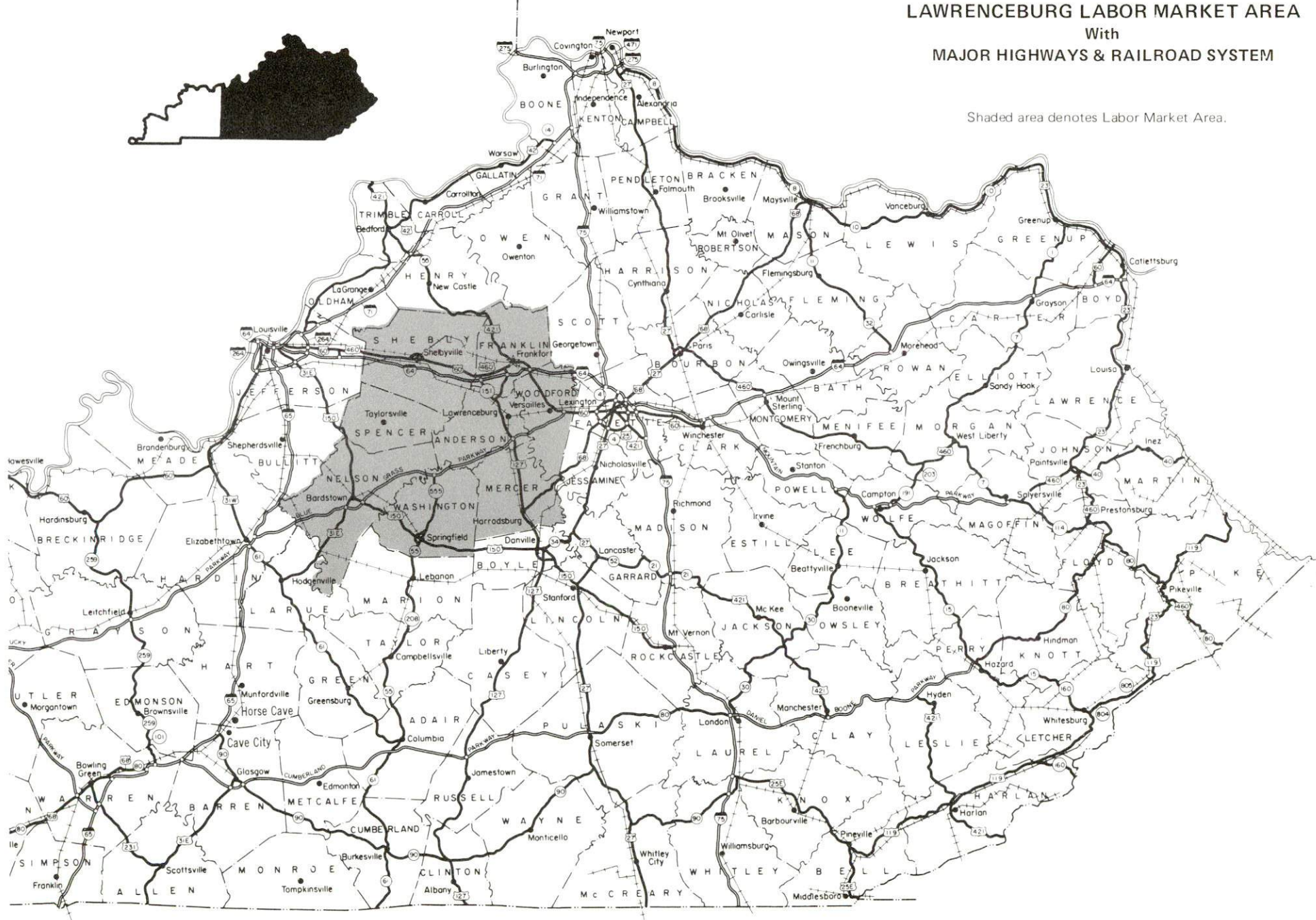
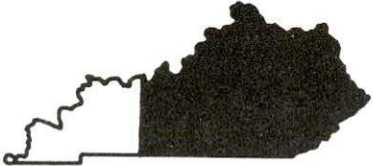




ANDERSON COUNTY COURTHOUSE

LAWRENCEBURG LABOR MARKET AREA
With
MAJOR HIGHWAYS & RAILROAD SYSTEM

Shaded area denotes Labor Market Area.



LAWRENCEBURG, KENTUCKY - A RESOURCE PROFILE

Lawrenceburg, county seat of Anderson County, is located in the Bluegrass Region of central Kentucky. Lawrenceburg is situated only 22 miles west of Lexington, Kentucky; 56 miles east of Louisville, Kentucky; and 100 miles south of Cincinnati, Ohio. In 1980 Anderson County had a population of 12,567 with 5,167 people residing within Lawrenceburg.

The Economic Framework

The total number of Anderson County residents employed in 1980 averaged 5,665, with nonagricultural jobs accounting for 5,270 workers. Manufacturing employers in the county reported 940 workers; construction firms 66; transportation, communications, and public utilities 149; wholesale and retail trade 404; finance, insurance, and real estate 63; and employees in the service industries 348. Manufacturing employment is greatest in the food and kindred products, stone, clay and glass products, and the primary metals industries.

Per capita personal income in the county in 1979 was \$7,284, or \$232 above the state average. Between 1975 and 1979 per capita income increased by 49 percent.

The Lawrenceburg labor market area includes Anderson and the seven adjoining counties. The total number of residents of the labor market area employed in 1980 averaged 70,401, with nonagricultural jobs accounting for 63,723 workers. Manufacturing employers in the area reported 12,738 workers; construction firms 2,065; transportation, communications, and public utilities 1,676; wholesale and retail trade 8,585; finance; insurance, and real estate 1,515; and 5,723 in the service industries.

Resources for Growth

1. Labor Supply - There is a current labor supply of 7,336 men and 5,025 women available for industrial jobs in the labor market area. In addition, 6,536 young men and 6,382 young women in the area will become 18 years of age before 1986 and potentially available for work.

2. Local transportation capability is excellent. The Southern Railway System provides rail service which includes eastbound and westbound freights which stop daily. Lawrenceburg is served directly by U. S. highways 62 and 127, both AAA rated, 80,000 pound gross load limit highways, and Kentucky 44, a AA rated, 62,000 pound gross load limit highway. The Blue Grass Parkway, a multilane, east-west toll road, is located 5 miles south of Lawrenceburg via U. S. 127. Access to I-64 is located 10 miles north, and access to I-75 is available 30 miles northeast of Lawrenceburg, both via AAA rated highways. Twenty-three common carriers have authority to serve Lawrenceburg. The nearest local airport is located in Frankfort, 14 miles to the north, and the nearest scheduled airline service is available near Lexington, 18 miles

to the east. Lawrenceburg is 14 miles from a point on the Kentucky River in Frankfort where a 6-foot navigation channel is maintained. Extensive riverport facilities are located on the Ohio River in Louisville, 56 miles distant.

3. Electric power is provided by the Kentucky Utilities Company and Fox Creek RECC. Natural gas service is provided by the Western Kentucky Gas Company. There are three distributors of propane and five distributors of distillate fuel oil located within 15 miles.

4. Education is an important growth asset for Lawrenceburg. The Anderson County School System serves over 2,600 students. There are 16 institutions of higher learning located within 60 miles.

The Central Kentucky State Vocational-Technical School, located 22 miles to the east in Lexington, offers training in 19 different courses. The Franklin County Area Vocational-Education Center, located 14 miles distant in Frankfort, offers seven different courses. In addition, the Harrodsburg Area Vocational-Education Center, 21 miles south, also offers seven courses.

THE LABOR MARKET AREA

The Lawrenceburg Labor Market Area includes Anderson County and the adjoining Kentucky counties of Franklin, Mercer, Nelson, Shelby, Spencer, Washington, and Woodford.

POPULATION			
Area	1980	1970	Percent Nonwhite
Lawrenceburg	5,167	3,579	8.0
Labor Market Area	158,791	132,925	N/A
Anderson County	12,567	9,358	3.9
Franklin County	41,830	34,481	8.7
Mercer County	19,011	15,960	4.6
Nelson County	27,584	23,477	6.6
Shelby County	23,328	18,999	11.4
Spencer County	5,929	5,488	2.7
Washington County	10,764	10,728	10.3
Woodford County	17,778	14,434	8.0

Note: The 1980 counts of population by race are provisional.

Sources: U.S. Department of Commerce, Bureau of the Census, 1980 Census of Population and Housing, March 1981. Population Research Unit, Urban Studies Center, University of Louisville, Kentucky Demographics: The 1980 Census of Kentucky, Characteristics of Population, Households, Housing, January 1982.

LABOR FORCE CHARACTERISTICS OF RESIDENTS, 1980

	Anderson County	Labor Market Area
Civilian Labor Force	6,064	75,578
Employment	5,665	70,401
Agricultural	395	6,678
Nonagricultural	5,270	63,723
Unemployment	399	5,177
Rate of Unemployment (%)	6.6	6.8

Source: Kentucky Department for Human Resources, Kentucky Labor Force Estimates, Annual Averages, 1980.

ESTIMATED MALE LABOR SUPPLY
LAWRENCEBURG LABOR MARKET AREA

Area	Current			Under- employed	Future
	Total	Not in Labor Force	Unemployed		Reaching 18 years of age before 1986
Labor Market Area*	7,336	1,343	3,439	2,554	6,536
Anderson	431	40	263	128	478
Franklin	1,429	0	746	683	1,515
Mercer	740	25	382	333	684
Nelson	1,937	552	947	438	1,327
Shelby	780	0	423	357	910
Spencer	599	381	135	83	303
Washington	781	345	309	127	576
Woodford	639	0	234	405	743

*Additional workers may be drawn from other nearby counties.

Note: Unemployed - persons unemployed and actively seeking work;
Underemployed - persons employed but working only 14 to 26 weeks per year; Not in Labor Force - represents the number of persons who would enter the labor force if suitable employment were available (based on the assumption that persons in Kentucky would like to participate in the labor force in the same proportion that they do nationally).

Sources: Kentucky Department for Human Resources, Kentucky Labor Supply Estimates by County, 1980. Kentucky Department of Economic Development, Future Labor Supply before 1986.

ESTIMATED FEMALE LABOR SUPPLY
LAWRENCEBURG LABOR MARKET AREA

Area	Current			Under- employed	Future
	Total	Not in Labor Force	Unemployed		Reaching 18 years of age before 1986
Labor Market Area*	5,025	282	1,738	3,005	6,382
Anderson	347	0	136	211	441
Franklin	1,262	0	387	875	1,502
Mercer	653	0	318	335	736
Nelson	957	0	396	561	1,343
Shelby	638	0	189	449	836
Spencer	378	268	61	49	253
Washington	293	14	130	149	522
Woodford	497	0	121	376	749

*Additional workers may be drawn from other nearby counties.

Note: Unemployed - persons unemployed and actively seeking work;
Underemployed - persons employed but working only 14 to 26 weeks per year; Not in Labor Force - represents the number of persons who would enter the labor force if suitable employment were available (based on the assumption that persons in Kentucky would like to participate in the labor force in the same proportion that they do nationally).

Sources: Kentucky Department for Human Resources, Kentucky Labor Supply Estimates by County, 1980. Kentucky Department of Economic Development, Future Labor Supply before 1986.

LAWRENCEBURG MANUFACTURING FIRMS,
THEIR PRODUCTS AND EMPLOYMENT

Firm (Establishment date)	Product	Employment			Labor Unions
		Total	Male	Female	
Anderson County Farm Service (1953)	Feed	7	7	0	
Anderson News (1877)	Newspaper	7	2	5	
Anderson Tool & Die (1974)	Tools, dies, molds, custom machines	6	6	0	
Austin Nichols and Company, Inc. (1855)	Distilled spirits	200	100	100	Distillery workers*
Belden Corporation, Cord Products Division (1981)	Electrical cord sets	30	-	-	
Cricketter Cutting Shop (1980)	Fabric cutting, men's suits	16	10	6	
Edwards Sausage Company, Inc. (1939)	Sausage, weiners, bologna	67	52	15	Food & Commercial Workers*
Farmers Service Center, Inc. (1955)	Feed	4	3	1	
Florida Tile Industries, Division of Florida Tile Industries, Inc. (1968)	Wall tile	259	154	105	
General Cable Company (1974)	Telephone cable	159	133	26	
The Kentucky Stone Company (1936)	Agricultural lime, railroad ballast	4	4	0	
Kentucky Wiring Devices (1981)	Electric harness assemblies, industrial sub-assemblies	20	3	17	

LAWRENCEBURG MANUFACTURING FIRMS,
THEIR PRODUCTS AND EMPLOYMENT

Firm (Establishment date)	Product	Employment			Labor Unions
		Total	Male	Female	
Kraft Inc. (1929)	Cheese, dried whey	103	-	-	
Lawrenceburg Supply Company (1907)	Lumber, ready mixed concrete	11	9	2	
Mago Construction Company Inc. (1970)	Bituminous concrete, surface mixes	15	15	0	
Joseph E. Seagram and Sons Inc. (1895)	Bourbon whiskey, dried feed	37	36	1	Distillery Workers* Fireman and Oilers*
Universal Fasteners Inc. (1955)	Metal buttons, snap fasteners, hooks and eyes, automatic attaching machines	197	148	49	Ladies Garment Workers* Machinists*

*See Labor Organizations below.

Source: Kentucky Department of Economic Development, Division of Research and Planning.

LABOR ORGANIZATIONS IN MANUFACTURING FIRMS

<u>Union</u>	<u>Representing workers at:</u>
Distillery, Wine and Allied Workers' International Union, AFL-CIO-CLC	Austin Nicholas and Company, Inc.; Joseph E. Seagram and Sons, Inc.
International Association of Machinists and Aerospace Workers, AFL-CIO	Universal Fasteners, Inc.
International Brotherhood of Firemen and Oilers, AFL-CIO	Joseph E. Seagram and Sons, Inc.
International Ladies' Garment Workers Union, AFL-CIO	Universal Fasteners, Inc.
United Food and Commercial Workers International Union, AFL-CIO	Edward Sausage Company, Inc.

INDUSTRIAL SERVICES

<u>Types of Services</u>	<u>Location</u>	<u>Mileage From Lawrenceburg</u>
Tool & Die, Machine & Pattern Shops	Lawrenceburg	-
Metal Service Centers	Lexington	22
Heat Treating	Georgetown	28
Metal Finishers	Lexington	22
Electric Motor Repair	Lexington	22

Sources: Kentucky Directory of Selected Industrial Services, 1981.
Kentucky Department of Economic Development, Division of Research
and Planning.

AVERAGE WEEKLY WAGES BY INDUSTRY,
BY PLACE OF WORK, 1980

	<u>Anderson County</u>	<u>Franklin County</u>	<u>Mercer County</u>	<u>Nelson County</u>
All Industries	\$217.69	\$243.73	\$214.26	\$225.65
Mining & Quarrying	*	*	*	364.59
Contract Construction	172.58	348.31	246.26	261.84
Manufacturing	280.48	263.99	267.22	301.31
Transportation, Communications & Public Utilities	384.70	331.43	314.26	326.19
Wholesale & Retail Trade	137.77	156.54	138.85	155.11
Finance, Insurance & Real Estate	189.62	251.29	232.48	187.12
Services	111.90	185.45	134.89	130.77
State/Local Government	194.37	255.42	210.52	200.57
Other	101.87	148.15	133.04	148.61

	<u>Shelby County</u>	<u>Spencer County</u>	<u>Washington County</u>	<u>Woodford County</u>
All Industries	\$194.63	\$178.29	\$175.18	\$238.84
Mining & Quarrying	0	*	*	0
Contract Construction	188.91	*	282.26	228.83
Manufacturing	229.99	*	201.04	286.81
Transportation, Communications & Public Utilities	293.94	175.40	201.08	338.10
Wholesale & Retail Trade	155.98	135.59	131.92	146.90
Finance, Insurance & Real Estate	220.18	*	206.74	190.71
Services	157.57	193.07	106.46	174.42
State/Local Government	217.53	178.82	170.08	226.32
Other	178.36	*	100.24	227.25

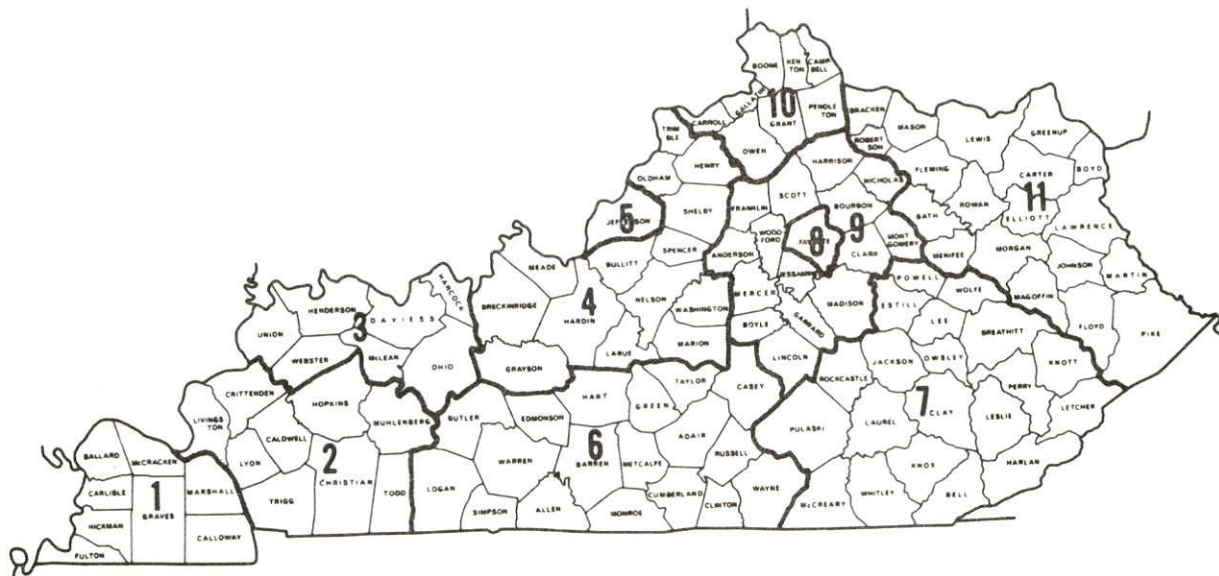
*Not disclosed.

Note: Excludes domestic workers, railway workers, certain nonprofit corporations, majority of federal government workers, and self-employed workers.

Source: Kentucky Department for Human Resources, Average Weekly Wages of Workers Covered by Kentucky Unemployment Insurance Law, 1980.

Occupational wage rates for specific industries are usually not available to most government agencies, and wage data furnished to state employment agencies by individual industrial employers is protected from disclosure by federal law. The most reliable up-to-date wage information can be obtained by direct contact with local employers.

Associated Industries of Kentucky, a voluntary organization of Kentucky businesses, regularly collects occupational wage rates and fringe benefits data from participating member firms. Data is compiled for over 127 clearly defined office, production, and service occupations. Tabulations are published for eleven regions of Kentucky, as shown on the map below. It should be noted that the data may be weighted by the preponderance of firms in the larger cities and may be somewhat higher than the rates paid in the smaller communities. Data from these tabulations are available, upon request, from the Kentucky Department of Economic Development, Frankfort, Kentucky 40601.



Associated Industries of Kentucky Area Wage Surveys

PER CAPITA PERSONAL INCOME

<u>Area</u>	<u>1979</u>	<u>1975</u>	<u>Percent Change</u>
Anderson County	\$7,284	\$4,883	49.2
Labor Market Area			
Range	\$5,290 - 9,537	\$3,556 - 5,688	N/A
Kentucky	7,052	4,882	44.4
U.S.	8,637	5,861	47.4

Source: U.S. Department of Commerce, Bureau of Economic Analysis,
 April 1981. U.S. Department of Commerce, Bureau of Economic Analysis,
 August 1981.

TRANSPORTATION

Rail

Line serving Lawrenceburg - Southern Railway System

Services - Freight - 1 westbound and 2 eastbound freights daily; local daily between Lawrenceburg and Lexington on branch line; local daily between Harrodsburg and Shelbyville with local work and switching at Lawrenceburg; 5 eastbound and 5 westbound scheduled through freights daily; switching facilities; team track with space for 10 cars plus siding space for 50 cars; nearest piggyback facilities at Danville, 30 miles to the south, or at Louisville, 56 miles to the west.

For detail on routing, schedules, rates, and services, contact:

District Sales Manager
Southern Railway System
1402 South 15th Street
Louisville, Kentucky 40210
(502) 647-7643

Highways

U. S. highways 127 and 62, both AAA rated, 80,000 pound gross load limit highways, and Kentucky Highway 44, a AA rated, 62,000 pound gross load limit highway, serve Lawrenceburg. The Blue Grass Parkway, a multilane, east-west tollroad, is located 5 miles south of Lawrenceburg via U. S. 127. Interstate 64 is located 10 miles to the north via U. S. Highway 127 and Kentucky Highway 151, both AAA rated. Located 30 miles northeast of the city via AAA rated roads is I-75, which provides easy transportation to the north and south.

Truck Service

<u>Company</u>	<u>Home Office</u>
Associated Truck Lines, Inc.*	200 Monroe Avenue Grand Rapids, Michigan 49503
Bronaugh Motor Express, Inc.*	1025 Nandino Boulevard Lexington, Kentucky 40511
Consolidated Freightways Corporation of Delaware*	175 Linfield Drive Menlo Park, California 94025
Cooper-Jarrett, Inc.**	Hanover Plaza Morristown, New Jersey 07960
General Highway Express, Inc.**	2280 Industrial Drive P.O. Box 727 Sidney, Ohio 45365
Helms Express*	12731 Route 30 P.O. Box 340 Irwin, Pennsylvania 15642
Hogan Storage & Transfer Company**(I)	Williamstown, West Virginia 25661
Interstate System**	110 Ionia N.W. Grand Rapids, Michigan 49503
Lawrenceburg Transfer Company, Inc.*(T)	Highway 127 P.O. Box 220 Lawrenceburg, Kentucky 40342
Leoni Motor Express, Inc.*	501 Ashland Avenue Chicago Heights, Illinois 60411
Maislin Transport Ltd.***	7401 Newman Boulevard Montreal, Que. CNH8N 1X4
Mason and Dixon Lines, Inc.*	P.O. Box 969 Kingsport, Tennessee 37662
McLean Trucking Company**	P.O. Box 213 Winston-Salem, North Carolina 27154
Mercury Motor Express, Inc.*	2511 N. Grady Avenue Tampa, Florida 33607
Middlewest Freightways, Inc.*	6810 Prescott Avenue St. Louis, Missouri 63147
O.K. Trucking Company*	3000 E. Crescentville Road Cincinnati, Ohio 45241
Overnite Transportation Company*	1000 Semmes Avenue P.O. Box 1216 Richmond, Virginia 23209
Pacific Intermountain Express*	25 North Via Monte Walnut Creek, California 94598
Roadway Express, Inc.*	1077 Gorge Boulevard Akron, Ohio 44309

Truck Service

<u>Company</u>	<u>Home Office</u>
Smith's Transfer Corporation**	P.O. Box 1000 Stauton, Virginia 24401
T.I.M.E. - D.C., Inc.*	P.O. Box 2550 Lubbock, Texas 79408
Thurston Motor Lines, Inc.*	600 Johnston Road Charlotte, North Carolina 28206
Transcon Lines*	101 Continental Boulevard El Segundo, California 90245
United Trucking Service, Inc.*	8505 W. Warren Dearborn, Michigan 48126

(T) Local terminal

(I) Irregular route common carrier

*Interstate and intrastate service.

**Interstate service only.

***Interstate service, truck local only.

Other Freight Services

Purolator Courier Corporation*
 United Parcel Service*
 Federal Express**

Nearest Shipping Center

Lexington, 22 miles distant
 Lexington, 22 miles distant
 Lexington, 22 miles distant

HIGHWAY MILES AND TRUCK TRANSIT TIME IN DAYS FROM
 LAWRENCEBURG, KENTUCKY, TO SELECTED MARKET CENTERS

City	Highway Miles	Delivery		City	Highway Miles	Delivery	
		Time TL				Time TL	
Atlanta, Ga.	384	next morning		Los Angeles, Ca.	2,164	5th morning	
Baltimore, Md.	563	2nd morning		Louisville, Ky.	56	next morning	
Birmingham, Ala.	420	next morning		Nashville, Tenn.	224	next morning	
Chicago, Ill.	348	next morning		New Orleans, La.	741	3rd morning	
Cincinnati, Ohio	100	next morning		New York, N. Y.	725	3rd morning	
Cleveland, Ohio	339	2nd morning		Pittsburgh, Pa.	365	2nd morning	
Detroit, Mich.	359	2nd morning		St. Louis, Mo.	319	2nd morning	
Knoxville, Tenn.	197	next morning					

Note: Mileage computations are via the best interstate or primary highways, not necessarily the most direct route of travel.

Sources: Rand McNally Road Atlas, 1979. Official Kentucky Mileage Map, 1979. Delivery time - Lawrenceburg Transfer Inc., Lawrenceburg, Kentucky 40342.

*For regular scheduled pickups or for occasional pickups, arrangements must be made with the Louisville office of Purolator Courier Corporation or United Parcel Service.

**For information on scheduling, rates, and services, contact the Federal Express shipping station at Lexington, Kentucky, or call the home office in Memphis, Tennessee, toll-free at 800-238-5355 (in Tennessee, call 800-542-5171).

Air

Local

Capital City Airport
Location: 1 mile west of Frankfort, 15 miles north
Lawrenceburg
Runways: 1 paved
Length: 5,000 feet
Traffic
Control: Wind tee
Lighting: Beacon, runway lights sundown to sunrise,
REILS and VASI R/W 6 and 24
Services: 80 and 100 octane, jet fuel; hangar; storage;
auto rental, taxi

Nearest Scheduled Airline Service

Blue Grass Field
Location: 4 miles west of Lexington, Kentucky; 18 miles
east of Lawrenceburg
Runways: 2 paved
Length: 6,500 feet; 3,500 feet
Traffic
Control: Tower
Lighting: Approach lighting system, beacon, runways and
obstructions lighted, VASI
Services: USAir, Delta, Piedmont, Frontier, Comair, Tennessee
Airways; fuel - 80, 100LL, jet-A; hangers, tie-downs;
major A & P repairs, major Avionics repairs; APU,
charter, flight instruction, oxygen, plane rentals,
survival equipment; taxi, limousine, car rentals,
courtesy car; weather information; restaurant,
snack bar

Air Freight
Service: Air freight terminal

Bus - Trailways Bus Lines

Rental Services - Car, truck and trailer rentals are available locally.

Water

Lawrenceburg is located 14 miles from a point on the Kentucky River in Frankfort where a 6-foot navigation channel is maintained. Unloading facilities for sand and gravel are located in Frankfort.

Lawrenceburg is 56 miles east of Louisville where the Louisville & Jefferson County Riverport Authority and the Port of Louisville are located on the Ohio River. The Louisville and Jefferson County Riverport Authority has been designated as a Foreign Trade Zone and offers complete U.S. customs services for exports and imports.

POWER AND FUEL

Electricity

Company serving Lawrenceburg and a portion of Anderson County - Kentucky
Utilities Company

Source of power - Kentucky Utilities Company

Total generating capacity - 2,639,100 KW

For industrial rates contact:

Industrial Development Department
Kentucky Utilities Company
One Quality Street
Lexington, Kentucky 40507
(606) 255-1461

Company serving Anderson County - Fox Creek Rural Electric Cooperative
Corporation

Source of power - East Kentucky Power Cooperative

Total generating capacity - 1,304,000 KW

For industrial rates contact:

Industrial Development Division
East Kentucky Power Cooperative
P.O. Box 707
Winchester, Kentucky 40391
(606) 744-4812

and/or

Fox Creek RECC
Highway 62 East
P.O. Box 211
Lawrenceburg, Kentucky 40342
(502) 839-3442

Natural Gas

Company serving Lawrenceburg - Western Kentucky Gas Company
Source of supply - Texas Gas Transmission Corporation
Size of transmission mains - 24 inch (supplier);
6 and 8 inch (distributor)
Distribution mains - 2, 4 and 6 inch
Distribution pressure - 50 to 55 psi
Btu content - 1,025 per cubic foot;
Specific gravity - .60
For rates and supplies contact:

Western Kentucky Gas Company
108 North Main Street
Lawrenceburg, Kentucky 40342
(502) 839-6243

Other Fuels (within 15 miles)

Propane

Buckeye Gas Products Company (Doxol Propane, bulk plant)
U.S. 127 Bypass
Lawrenceburg, Kentucky 40342

Burley Oil Company
Versailles Road
Frankfort, Kentucky 40601

Southern States Cooperative, Inc.
Jett Petroleum Service
Versailles Road
Frankfort, Kentucky 40601

Fuel Oils

Distillate fuel oil -

Anderson County Petroleum
U.S. 127 North
Lawrenceburg, Kentucky 40342

Rainbow Coal & Oil Company
Lexington Pike
Versailles, Kentucky 40383

Burley Oil Company (bulk plant)
Versailles Road
Frankfort, Kentucky 40601

Robinson's Oil Company
Versailles Road
Frankfort, Kentucky 40601

Phillips 66 (bulk plant)
Louisville Road
Frankfort, Kentucky 40601

Residual fuel oil - Arrangements must be made with the refinery.

Low sulphur content coal - Available in Kentucky.

WATER AND SEWERAGE

Water

Company serving Lawrenceburg - Lawrenceburg Water and Sewer Department
201 Court Street
Lawrenceburg, Kentucky 40342
(502) 839-5372

Source - Kentucky River

Treatment plant capacity - 2,250,000 gallons per day

Average daily consumption - 1,250,000 gallons

Peak daily consumption - 1,500,000 gallons

Type treatment - Prechlorination, coagulation, sedimentation, filtration, and fluoridation

Storage capacity - 1,225,000 gallons

Size lines - 4, 6, 8, 10 and 12 inch

Average pressure - approximately 45 psi

Average temperature - 61 degrees F

MONTHLY WATER RATES

First	3,000 gallons	\$4.50 Minimum
Next	7,000 gallons	1.20 per M gallons
Next	20,000 gallons	1.11 per M gallons
Next	30,000 gallons	.90 per M gallons
Next	40,000 gallons	.80 per M gallons
Next	100,000 gallons	.71 per M gallons
Next	300,000 gallons	.63 per M gallons
Next	500,000 gallons	.60 per M gallons

\$5.33 Minimum rate outside city limits

Tap-on charge: Residential - \$200
Commercial and industrial - Actual
cost of tap, material, and labor

Raw Water

Surface water sources - Kentucky River, Salt River and Beaver Creek

Average discharge - Kentucky River at Lock 6, near Salvisa,

6,812 cfs (55 years, unadjusted, USGS); Salt River, near

Van Buren, 254 cfs (42 years, USGS)

Expected ground water yield - 50 to 200 gpm in small portion of
central Anderson County; 5 to 50 gpm along Kentucky River along
eastern boundary; 5 gpm or less in remainder of county

Sewerage

Company serving Lawrenceburg* - Lawrenceburg Water & Sewer Department
201 Court Street
Lawrenceburg, Kentucky 40342
(502) 839-5372

Design capacity - 500,000 gallons per day

Average daily flow - At capacity

Treatment - Primary and secondary

Type treatment - Aeration, primary and secondary clarifier,
trickling filter

Treated effluent discharged into - Hammonds Creek

Size of sanitary mains - 6, 8, 10, 12, 18 and 21 inch

Size of storm mains - 6 through 36 inch

Rates:

First	2,000 gallons	\$6.00 Minimum
Next	8,000 gallons	2.40 per M gallons
Next	20,000 gallons	2.15 per M gallons
Next	30,000 gallons	1.90 per M gallons
Next	40,000 gallons	1.65 per M gallons
Next	100,000 gallons	1.45 per M gallons
Next	300,000 gallons	1.35 per M gallons
Next	500,000 gallons	1.25 per M gallons

Tap-on charge: Residential \$75
Commercial and industrial - actual cost
of labor and materials

*Construction of a new waste water treatment plant began in spring 1982.
The new plant will have a design capacity of 1,900,000 gallons per day
the project is scheduled for completion in fall 1983.

CLIMATE

Anderson County

Temperature

Normal (30-year record)	55.2 degrees
Average annual 1980	54.3 degrees
Record highest, September, 1954 (36-year record)	103.0 degrees
Record lowest, January, 1963 (36-year record)	-21.0 degrees
Normal heating degree days (30-year record)	4,729
(Heating degree day totals are the sums of negative departures of average daily temperatures from 65 degrees F.)	

Precipitation

Normal (30-year record)	44.49 inches
Mean annual snowfall (36-year record)	17.00 inches
Total precipitation 1980	34.69 inches
Mean number days precipitation (.01 inch or more) (36-year record)	131
Mean number days thunderstorms (36-year record)	47

Prevailing Winds (17-year record)

South

Relative Humidity

1 a.m.	77 percent (16-year record)
7 a.m.	81 percent (17-year record)
1 p.m.	60 percent (17-year record)
7 p.m.	64 percent (17-year record)

Source: U.S. Department of Commerce, Environmental Science
Services Administration, Climatological Data, 1980.
Station of record: Lexington, Kentucky.

LOCAL GOVERNMENT

City

Lawrenceburg

Structure - Mayor - 4-year term; 6 council members - 2-year terms

Budget 1981-82 - General Fund \$459,408

Water and Sewer Fund \$614,200

Fees and licenses - Occupational license fees range from \$25 to \$500 per year

County

Structure - County Judge/Executive - 4-year term;

6 magistrates - 4-year terms

Budget 1981-82 - General Fund \$440,700; Road Fund \$405,886

Assessed Value of Property, 1981*

<u>Classes of Property</u>	<u>Lawrenceburg</u>	<u>Anderson County</u>
Real Estate	\$58,209,699	\$159,629,441
Tangibles	12,685,541	49,028,400

Property Taxes

All property in Kentucky is assessed at 100 percent of fair cash value.

Land and buildings are taxed by the state and may be taxed by local jurisdictions. The state rate is \$0.229 per \$100 of assessed valuation.

Manufacturing machinery, raw materials inventories, pollution control equipment, and goods in the process of manufacture are not subject to local taxation. The state rate is \$0.15 per \$100.

Other tangible personal property owned by manufacturers (automobiles, trucks, finished goods, office furniture, office equipment) is taxed by the state at \$0.45 per \$100 and may be taxed by local jurisdictions.

Property stored in public warehouses in a transit status is not subject to local taxation. The state rate is only \$0.015 per \$100.

Intangible personal property located in Kentucky (money in hand, shares of stock, notes, bonds, accounts receivable, and other credits) is taxed by the state at \$0.25 per \$100, and is not subject to local taxation.

Private leaseholds in industrial facilities owned by cities or counties and financed by industrial revenue bonds are subject to a state tax of \$0.015 per \$100 of value (essentially the lessee's equity, adjusted for appreciation or depreciation). Local taxation is not permitted.

*Excludes Homestead Exemptions.

Combined State and Local Rates Per \$100 Valuation, 1981*
(100% assessment)

	<u>Inside City of Lawrenceburg</u>	<u>Outside City</u>
1. Land and buildings	\$0.8562	\$0.6262
2. Mfg. machinery, raw materials, goods in process, pollution control equipment	0.1500	0.1500
3. Finished goods, office equipment, vehicles, other tangibles	1.0772	0.8472
4. Intangibles (accounts receivable, notes, bonds, etc.)	0.2500	0.2500
5. Leaseholds in industrial revenue bond financed plants	0.0150	0.0150

Planning and Zoning

Joint agency - Lawrenceburg-Anderson County Planning and Zoning Commission
 Zoning enforced - within Lawrenceburg city limits only
 Subdivision regulations enforced - all areas
 Mandatory state codes enforced - Kentucky Plumbing Code, National Electric Code, Kentucky Boiler Regulations and Standards, Kentucky Building Code (modeled after BOCA code and applying to buildings with an occupancy of 100 or more persons)

Safety

<u>Police</u>	<u>Lawrenceburg</u>	<u>Anderson County</u>
Total staff	13 full-time 2 part-time	4
Radio-patrol cars	4	3
<u>Fire</u>		
American Insurance Association Fire Rating	7	**
Volunteers	20	-

*Kentucky Department of Economic Development

**Anderson County is served by four fire protection areas. The areas and their American Insurance Association Fire Rating are listed below:
 Alton F.P.A. - 10; Glensboro F.P.A. - 9 & 10; Stringtown Ruritan F.P.A. - 9 & 10; Western F.P.A. - 10

Rescue Service

Anderson County Rescue Squad:

Number of volunteers - 24

Equipment - 1 four-wheel drive truck, 1 jeep, 1 rescue vehicle equipped for light duty rescue, 2 recovery boats, 2 motors, 2 portable generators, light duty rescue equipment

Personnel training - Standard first aid, water rescue, basic field training; 2 members of the squad are emergency medical technicians.

Refuse Collection and Disposal

	<u>Lawrenceburg and Anderson County</u>
Type service	Private
Fee charged:	
residential	\$6 per month
business	Based on volume
Collection frequency:	
residential	Weekly
business	As needed
Trash pickup	On call
Disposal method	Landfill

Sanitation service is available to manufacturing plants located inside and outside the corporate limits through a private sanitation company. Cost of this service is based on volume and frequency of collection.

EDUCATION

Public Schools

Anderson County

Total Enrollment (January 1982)	2,608
Elementary	1,445
Middle School	438
High School	725
Student-Teacher Ratio	20-1
Elementary	22-1
Middle School	24-1
High School	16-1
Percent High School Graduates to College(1981)	45.7
Expenditures Per Pupil (1980-81)	\$1,275.12
Bonded Indebtedness (June 30, 1981)	\$3,096,000

Area Colleges and Universities

<u>Name</u>	<u>Location (Miles distant)</u>	<u>Enrollment (Fall, 1981)</u>	<u>Highest Degree Conferred</u>
Kentucky State University	Frankfort (14)	2,385	Masters
Midway College	Midway (15)	338	Associate
University of Kentucky	Lexington (22)	23,441	Doctorate, M.D., D.M.D., J.D.
Transylvania University	Lexington (22)	750	Baccalaureate/ Masters*
Lexington Technical Institute	Lexington (22)	2,302	Associate
Georgetown College	Georgetown (28)	1,263	Masters
Centre College	Danville (30)	635	Baccalaureate
Asbury College	Wilmore (36)	1,200	Baccalaureate
St. Catharine College	Springfield (37)	246	Associate
Eastern Kentucky University	Richmond (47)	13,394	Masters, Specialist/ Doctorate**
University of Louisville	Louisville (56)	20,302	Doctorate, M.D., D.M.D., J.D.
Bellarmino College	Louisville (56)	2,585	Masters
Spalding College	Louisville (56)	1,005	Masters
Jefferson Community College	Louisville (56)	5,116	Associate
Jefferson Community College Southwest	Louisville (56)	1,221	Associate
Berea College	Berea (60)	1,537	Baccalaureate

*Courses in the masters degree program are taught on the Transylvania campus by faculty members of Xavier University of Cincinnati. The degree is issued by Xavier University.

**Joint doctoral degree programs are offered in cooperation with the University of Kentucky, Lexington, and cooperative doctoral degree programs are offered with Michigan State University and the University of Maryland

Vocational Schools

Both the state vocational-technical schools and the area vocational education centers are operated by the Kentucky Department of Education. The state vocational-technical schools enroll persons full time who are at least 16 years of age and not in school. These students attend classes for six hours each day. The area vocational education centers are designed to accommodate high school students who are at least 15 years of age. These students attend vocational school for three hours each day. The state vocational-technical schools and the area education centers offer evening courses to enable working adults to upgrade current job skills.

Nearest State School

Location	Central Kentucky State Vocational-Technical School
Miles Distant	Lexington 22
Curriculum	Business and Office Clerical Secretarial Consumer and Home Economics Commercial Foods Health and Personal Services Occupations Cosmetology Dental Assistant Nurse's Aide Practical Nursing Surgical Technician Industrial Education Auto Body Repair Auto Mechanics Carpentry Drafting Electronics Graphic Arts Industrial Electricity Machine Shop Masonry Sheet Metal, Heating and Cooling Welding Learning Resource Center

The Lexington Technical Institute is a unit of Kentucky's community college system operating on the University of Kentucky campus. Courses parallel university offerings and are transferable to the Lexington U of K campus or to another 4-year institution either public or private. The Institute awards the Associate in Arts degree and the Associate in Applied Science degree.

The Associate in Applied Science Degree is awarded in the following programs: Accounting Technology; Architectural Technology; Civil Engineering Technology; Data Processing Technology (Business Option, Science Option); Dental hygiene: Dental Laboratory Technology; Electrical Engineering Technology (Electronics Option); Management Technology (Business Option); Mechanical Engineering Technology; Nursing; Radiologic Technology; Real Estate; Respiratory Therapy; Secretarial Administration; Transportation.

Nearest Area Education Centers

Location	Franklin County Area Vocational- Education Center
Miles Distant	Frankfort 14
Curriculum	Marketing and Retailing Industrial Education Auto Body Auto Mechanics Drafting Electricity Machine Shop Welding
Location	Harrodsburg Area Vocational Education Center
Miles Distant	Harrodsburg 21
Curriculum	Business and Office Clerical Secretarial Health and Personal Services Occupations Health Careers Industrial Education Auto Mechanics Carpentry Industrial Electricity Welding

Arrangements can be made to provide training in the specific production skills required by an industrial plant. Instruction may be conducted either in the vocational school or in the industrial plant, depending upon the desired arrangement and the availability of special equipment.

HEALTH

Local Medical Personnel

Physicians - 4
Dentists - 4

Hospitals

<u>General Hospital</u>	<u>Location</u>	<u>Beds</u>
Woodford Memorial Hospital	Versailles, 10 miles distant	71
King's Daughters' Memorial Hospital	Frankfort, 14 miles distant	157*

Woodford Memorial Hospital

General hospital facilities - surgery, intensive care/coronary care unit, obstetrics, physical therapy, respiratory therapy, pharmacy, laboratory, X-ray, ultrasound and emergency room with 24-hour physician coverage.

Medical staff - 210 employees plus 25 physicians on active staff, 22 physicians on courtesy staff and 8 on dental staff.

King's Daughters' Memorial Hospital

General hospital facilities - Five operating rooms, a recovery room, a laboratory, X-ray, CCU/ICU, an emergency room, a pharmacy, an OB section with nursery, neurology services including E.E.G., physical therapy, respiratory therapy, nuclear medicine, social services, outpatient surgery, and ultrasound

Medical staff - 47 medical doctors, 10 dentists, 100 registered nurses (63 full time, 37 part time), 20 licensed practical nurses, 80 nursing technicians

Ambulance Service

Name - Anderson Emergency Medical Service
Staff - 7 Emergency Medical Technicians
Service - 24-hour, 7 days per week, radio-dispatched, county-wide
Equipment - Three fully-equipped ambulances (ambulances are also equipped with rescue equipment)

Public Health

Facility - Anderson County Health Department
Staff - Full-time: health environmentalist, community health nurse, three community health workers, clerk; Part-time: administrative assistant, community health nurse, clinician, clerk

*A \$3.7 million expansion project, which is currently under way, will provide 33 additional beds to the existing facilities.

OTHER LOCAL FACILITIES

Communications

Telephone - South Central Bell
Services - Standard

Telegraph - Western Union
Services - Toll-free number, 1-800-325-5100

Postal - U.S. Post Office
Class - First
Mail received - Once daily
Mail dispatched - Once daily

Newspaper - Anderson News
Weekly and circulation - 4,396
Other papers
received from - Frankfort, Lexington and Louisville, Kentucky

Radio -
stations received from - Lexington and Louisville, Kentucky;
Cincinnati, Ohio

Television -
Cable service
Reception from - Lexington and Louisville, Kentucky;
Cincinnati, Ohio; Atlanta, Georgia
Kentucky Educational
Television - Lexington-Richmond transmitter - Channel 46
Louisville transmitter - Channel 68

Library Services

Public Library - Anderson Public Library
Size collection - 33,500 volumes
Circulation - 250 volumes per day
Services - Records, pictures, periodicals, newspapers, record player,
art by local artists, film strips and projector, movie projector and
screen, carousel projector, microfilm reader-printer, copy machine,
story hour, community meeting room, bookmobile, summer reading
program, local history and genealogy, overhead projector, microfiche,
notary public

Religious Institutions

Number of churches - 42
Denominations - Baptist
Catholic
Christian
Church of Christ
Church of God
Jehovah's Witnesses
Methodist
Pentecostal
Presbyterian
Assembly of God
Seventh Day Adventist

Nearest Synagogues - Lexington, 22 miles distant
Congregations - Ohavey Zion (traditional)
Adath Israel (reform)

Financial Institutions

<u>Banks</u>	<u>Assets</u>	<u>Deposits</u>	<u>Statement Date</u>
Anderson National Bank	\$29,575,298.91	\$25,618,659.11	12/31/81
Lawrenceburg National Bank	31,685,015.85	27,256,919.57	12/31/81
<u>Savings and Loan Associations</u>	<u>Assets</u>	<u>Savings Accounts</u>	<u>Statement Date</u>
Harrodsburg First Federal Savings and Loan Association	\$57,575,402.00	\$54,618,977.00	9/30/81

Hotels and Motels

Total number - 1
Total rooms - 11

Clubs and Organizations

American Cancer Society
Beta Club
Beta Sigma Phi Women's Club
Boy Scouts
Business & Professional Women
Career Girls
Co-Ed-Y
Coupon Club
Crafts Club
Eastern Star
Farm Bureau
Fellowship of Christian Athletes
French Club
Future Farmers of America (FFA)
Future Homemakers of America (FHA)
Garden Club
Girl Scouts
Good News Club
Homemakers
Humane Society
Lions Club
Masonic Lodge
P.T.A.
Red Cross
Rotary
Ruritan
Sportsmen
Student Action for Education
Welcome Wagon
Young Historians

RECREATION

Local

Lawrenceburg offers a variety of recreational facilities and supervised programs that include baseball, softball, basketball, track and tennis. Public facilities include two parks, three playgrounds, two swimming pools, one 18-hole golf course, tennis courts, baseball diamonds and football fields. Other featured activities include the Lawrenceburg Fair, the Horse Show, and the 4-H Fair. Fishing and boating are available at Beaver Lake, 10 miles southwest of town.

Area

Lawrenceburg is situated in an area that offers many recreational facilities and scenic sites. Located 14 miles to the north is Frankfort, the state capital, offering numerous historical sites, the State Capitol Building and various attractions.

Old Fort Harrod State Park, 21 miles south of Lawrenceburg, is a 28-acre park in Harrodsburg that features a full-scale reproduction of the original Fort Harrod. The park also contains the log cabin where Abraham Lincoln's parents were wed, the Mansion Museum which houses mementos associated with the great periods of Kentucky history, a pioneer cemetery, and a federal monument dedicated to pioneers. The "Legend of Daniel Boone," an outdoor drama which brings to life on stage the men and women who made Kentucky, is performed in the park amphitheatre during the summer months.

Lexington, 22 miles east of Lawrenceburg, offers a variety of cultural, sporting, and recreational activities. Thoroughbred and harness racing is presented at Keeneland Race Course and the Red Mile Harness Track during several meets each year. The University of Kentucky and Transylvania University offer a number of sporting events. The University of Kentucky basketball games are held at Rupp Arena, the world's largest basketball arena. Other attractions include Lexington Philharmonic Concerts, Lexington Children's Theatre, and plays performed by Broadway touring companies, all held in the recently renovated Opera House.

The Kentucky Horse Park, a park dedicated to horses and to man's love for horses, is located 22 miles east of Lawrenceburg in Lexington. The park, which contains more than 1,000 acres of Kentucky Bluegrass, features the International Museum of the Horse; the Man O'War Memorial; an antique carriage display; horseback and pony rides; walking farm tours; horse-drawn tours; planned recreation; a restaurant; a gift shop; and a campground area, which offers swimming, tennis, and planned activities. Numerous special events are held year-round and include various horse shows, steeplechasing, dressage, polo games, and three-day eventing.

Waveland State Shrine, 22 miles east of Lawrenceburg near Lexington, features a 1847 Greek Revival mansion depicting Kentucky lifestyles from the days of early settlers to the antebellum era of gentility and elegance as well as the Civil War and postwar periods. The shrine also includes the Kentucky Life Museum and a plantation village on 10 acres with many shops and displays.

Isaac Shelby State Shrine, 30 miles south of Lawrenceburg near Danville, is the burial site of Kentucky's first governor and one of the Commonwealth's foremost statesmen.

Constitution Square State Shrine, 30 miles south of Lawrenceburg in Danville, is a reproduction of Kentucky's first courthouse square, including the original 1792 post office which was the first in the west.

Perryville Battlefield State Shrine, 31 miles southwest of Lawrenceburg near Perryville, is the site of the largest Civil War battle in Kentucky. A museum, a picnic area, and a playground are located on the grounds.

Lincoln Homestead State Park, 37 miles southwest of Lawrenceburg near Springfield, is a 153-acre park on the original land settled by Abraham Lincoln's family. The actual building in which Nancy Hanks, mother of President Lincoln, lived during her courtship with Thomas Lincoln is preserved here as well as a replica of the 1782 cabin where Lincoln lived as a boy. The park also has a museum, a gift shop, a picnic area, and an 18-hole golf course.

My Old Kentucky Home State Park, approximately 40 miles west of Lawrenceburg in Bardstown, portrays an image of the South's gentle and leisurely home life before the Civil War. The restored Georgian Colonial mansion is where he was inspired to write "My Old Kentucky Home." One of the nation's most successful outdoor dramas, "The Stephen Foster Story," is presented in the park's amphitheatre mid-June until Labor Day. The park also offers a 40-site campground, a gift shop, a 9-hole golf course and pro shop, a picnic area, and planned recreation.

Program manager - Brenda Roberts; research - Andrew Dennis; clerical - Lisa Richards; graphics - Frank Ferrante, Tony Cecconi, Jimmy Thompson; cartography - Site Evaluation Section, Industrial Development Division. Cost of printing paid from state funds.



University of Vermont, College of Economic Development
100 South Main Street, Room 101, Burlington, VT 05405
Phone: (802) 241-2100 Fax: (802) 564-4270