

12-1967

Industrial Resources: Barren County - Glasgow

Kentucky Library Research Collections
Western Kentucky University, spcol@wku.edu

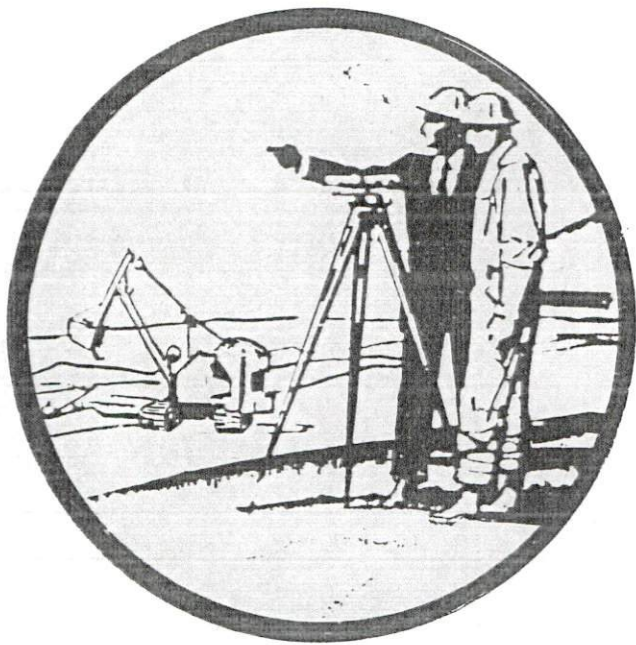
Follow this and additional works at: https://digitalcommons.wku.edu/barren_cty

 Part of the [Business Administration, Management, and Operations Commons](#), [Growth and Development Commons](#), and the [Infrastructure Commons](#)

Recommended Citation

Kentucky Library Research Collections, "Industrial Resources: Barren County - Glasgow" (1967). *Barren County*. Paper 21.
https://digitalcommons.wku.edu/barren_cty/21

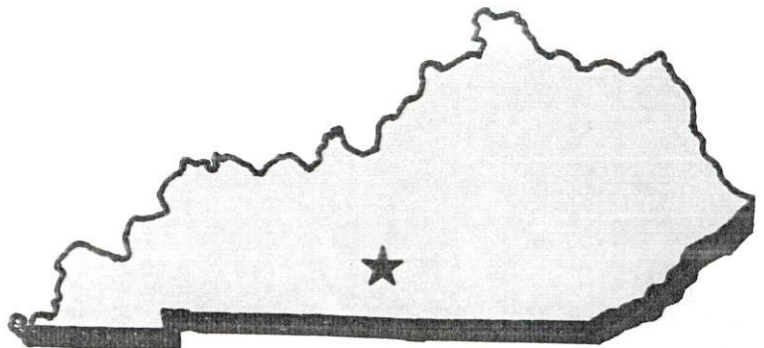
This Report is brought to you for free and open access by TopSCHOLAR®. It has been accepted for inclusion in Barren County by an authorized administrator of TopSCHOLAR®. For more information, please contact topscholar@wku.edu.



YOUR GUIDE TO A

KENTUCKY INDUSTRIAL SITE

GLASGOW
HAS THE
LOCATION



GLASGOW DEVELOPMENT CORPORATION

The Glasgow Development Corporation, a nonprofit organization, owns 89 acres in three sites located between U. S. 68 and U. S. 31E. Highway access is provided to both highways by an access road serving the center of the sites.

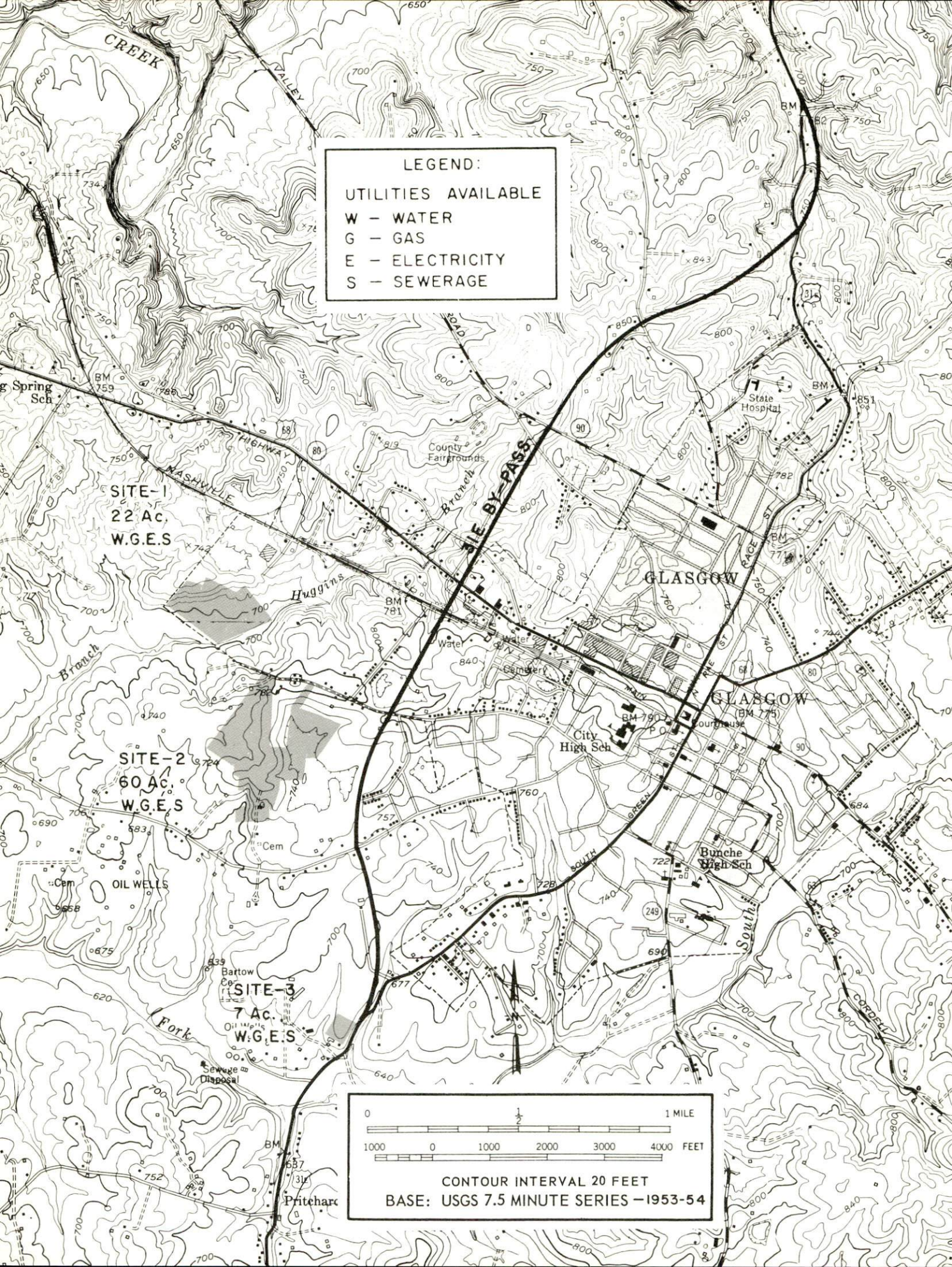
Site one, 22 acres, is served by the Louisville & Nashville Railroad with a turnout feasible almost anywhere on the site. This site is relatively level, in the city limits, and has a paved road leading to U. S. 68 and Kentucky Route 80. Electricity, natural gas, water and sewerage lines are available on the property.

Site two, 60 acres, is located near the western city limits. An L & N spur is located within one-fifth of a mile from the site. Adequate electricity, water, gas, and sewerage facilities are available. The site fronts Kentucky Route 1297.

Site three, 7 acres of level land, is located near the southern city limits. Rail is not available but highway access is by U. S. 31E by-pass. Electricity, gas, water, and sewerage facilities are all available at the site.

Plats for sites one and three are available through the Glasgow Development Corporation.

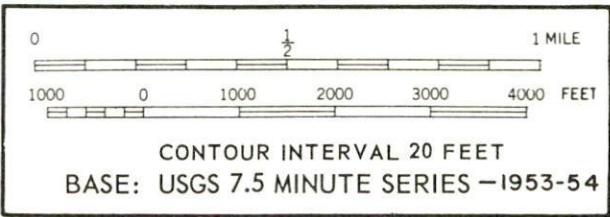
LEGEND:
 UTILITIES AVAILABLE
 W - WATER
 G - GAS
 E - ELECTRICITY
 S - SEWERAGE



SITE-1
 22 Ac.
 W.G.E.S.

SITE-2
 60 Ac.
 W.G.E.S.

SITE-3
 7 Ac.
 W.G.E.S.



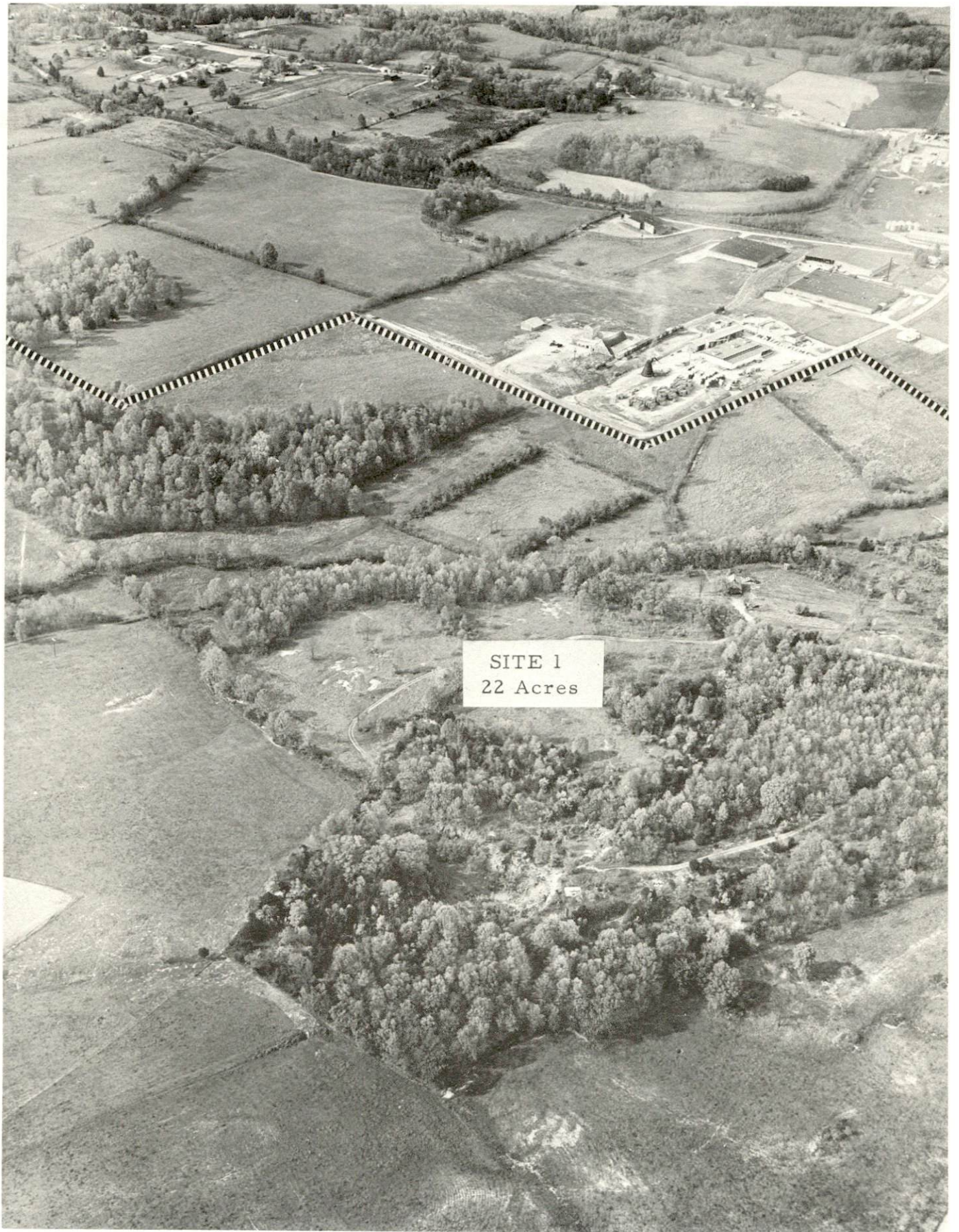


GLASGOW DEVELOPMENT CORPORATION

Scale 1" = 400'

Site 2

Contour Interval 2'



SITE 1
22 Acres

GLASGOW, KENTUCKY

LOCATION:

Glasgow is located in the southern portion of central Kentucky, 94 miles south of Louisville and 85 miles north of Nashville, Tennessee.

POPULATION:

1960:	Glasgow - 10,069	Barren County - 28,303
1967: (EST.)	Glasgow - 13,500	Barren County - 29,500

TRANSPORTATION:

Railroads: Glasgow is served by the Louisville & Nashville Railroad operating between Glasgow and Park City. There is one daily freight each way. There is an average of 30 outbound carloads per month consisting mainly of cheese, lumber, and bales of rags. Inbound carloads average about 180 per month. Piggyback and switching services are available in Glasgow.

Air: The nearest major airport is the Bowling Green-Warren County Municipal Airport, 32 miles distant. It is served by Eastern Air Lines. The Glasgow Municipal Airport, with a 3,000-foot paved strip, provides facilities for planes up to and including a DC 3.

Truck Lines: The following truck lines serve Glasgow with interstate and intrastate service:

Burkesville Transfer Co.	Burkesville, Ky.	Interstate- Intrastate
Dixie Highway Express, Inc.	Meridian, Miss.	Interstate- Intrastate
Dixie Ohio Express, Inc.	Akron, Ohio	Interstate
Johnson Freight Lines Co., Inc.	Nashville, Tenn.	Interstate
McLean Trucking Co.	Winston-Salem, N. C.	Interstate- Intrastate
Skaggs Transfer, Inc.	Louisville, Ky.	Interstate- Intrastate
Tompkinsville Transfer Co.	Tompkinsville, Ky.	Interstate

Bus Lines: Glasgow is served by Southern Greyhound Bus Lines, Inc., with one northbound and one southbound bus daily. Cardinal Bus Lines, operating between Glasgow and Cave City, provides four round-trip buses daily.

Highways: Glasgow is served by U. S. Routes 31E and 68, and Kentucky Routes 63, 80, 90, 249, 1297, and 1343. U. S. 31E by-pass, west of the city, is now complete. I-65, now under construction, will pass approximately 10 miles west of Glasgow.

UTILITIES:

Electricity: The Glasgow Electric Plant Board, whose source of supply is TVA, serves the city with a 69,000 volt transmission loop. The system serves 4,029 customers. Barren County is served by Farmers RECC and Warren RECC. Farmers RECC serves 10,090 customers.

Natural Gas: The Western Kentucky Gas Company, whose source of supply is the Texas Gas Transmission Corporation, serves Glasgow. One 6-inch high pressure transmission main maintains 300 psi. BTU content is 1,000 and specific gravity is .60. Customers served in the city number 3,168.

Water: Glasgow is served by the Glasgow Water and Sewerage Commission. Present storage facilities hold 2,000,000 gallons. The capacity of the old treatment plant is 2,500,000 gpd. Peak daily use has been 2,000,000 gallons while average daily use is 1,300,000 gallons. A new \$3,500,000 water treatment plant and pumping station has just been completed 12 miles south of Glasgow. This plant can furnish up to 6,000,000 gallons per day, with an average pressure of 60 psi.

Sewerage: The Glasgow Water and Sewerage Commission serves Glasgow. The sewerage system can serve a population of 20,000 people. Another sewerage treatment plant is on standby and can serve a population of 10,000. The maximum daily flow has been 2,000,000 gallons and the average flow is 1,000,000 gpd. Sanitary mains vary from 6 to 24 inches. Eighty percent of the city is served.

COMMUNICATION:

Telephone: Glasgow is served by General Telephone Company. There are 5,068 customers within the City of Glasgow. Barren County is served by South Central Rural Telephone Company with headquarters in Glasgow. This company serves over 8,500 customers in a seven-county area.

Postal Facilities: Glasgow has a first-class post office with 29 employees. Mail is received two times and dispatched three times daily via truck and train. There are six city routes and seven rural routes.

Newspapers: The Glasgow Daily Times, published Monday through Friday, has a circulation of 8,900. The Glasgow Republican, a weekly paper published on Wednesday, has a circulation of 8,350.

Radio:

<u>Station</u>	<u>Location</u>	<u>Watts</u>	<u>Kilocycles</u>	<u>Operating Hours</u>
WKAY	Glasgow	1000	1490	5 a.m. to 10 p.m.
WCDS	Glasgow	1000	1440	Dawn to Dusk
WGCC-FM	Glasgow	5000	95.1 (meg.)	5 a.m. to 10 p.m.

Television: Glasgow is served by Kentucky Cable Vision, but reception is also good with outside antennas. Reception is good from Louisville and Bowling Green, Kentucky; Nashville, Tennessee; and Evansville, Indiana. All three major networks are represented.

EDUCATION:

Graded Schools:

District - Glasgow Independent

Facilities - Four elementary schools, one junior high, one new high school, gymnasium, and athletic field

Enrollment - Elementary 1,491; Jr. High 442; High School 574

Student-Teacher Ratio - Elementary 26-1; Jr. High 26-1;
High School 19-1

Improvements - New 1 1/2 million dollar high school, gymnasium, and athletic field

District - Caverna Independent

Facilities - Two elementary schools, one high school

Enrollment - Elementary 575; High School 391

Student-Teacher Ratio - Elementary 26-1; High School 22-1

System - Barren County

Facilities - Six elementary and four high schools

Enrollment - Elementary 2,609; High School 949

Student-Teacher Ratio - Elementary 26-1; High School 19-1

Vocational Schools: The Glasgow Vocational School, which is an extension of the Western Area Vocational School in Bowling Green, is housed in a new \$165,000 building and is owned by the Glasgow School System. Courses are offered in drafting, auto mechanics, and building trades.

Colleges: Western Kentucky University is 32 miles from Glasgow in Bowling Green, Kentucky. This four-year, coeducational institution confers three undergraduate and two graduate degrees.

Other Kentucky institutions of higher learning in the Glasgow area include:

Murray State University, Murray, 152 miles
Brescia College, Owensboro, 106 miles
Kentucky Wesleyan College, Owensboro, 106 miles
Campbellsville College, Campbellsville, 52 miles
Centre College, Danville, 101 miles
University of Kentucky, Lexington, 136 miles
Transylvania College, Lexington, 136 miles
Lexington Theological Seminary, Lexington, 136 miles
Asbury College, Wilmore, 122 miles

HEALTH:

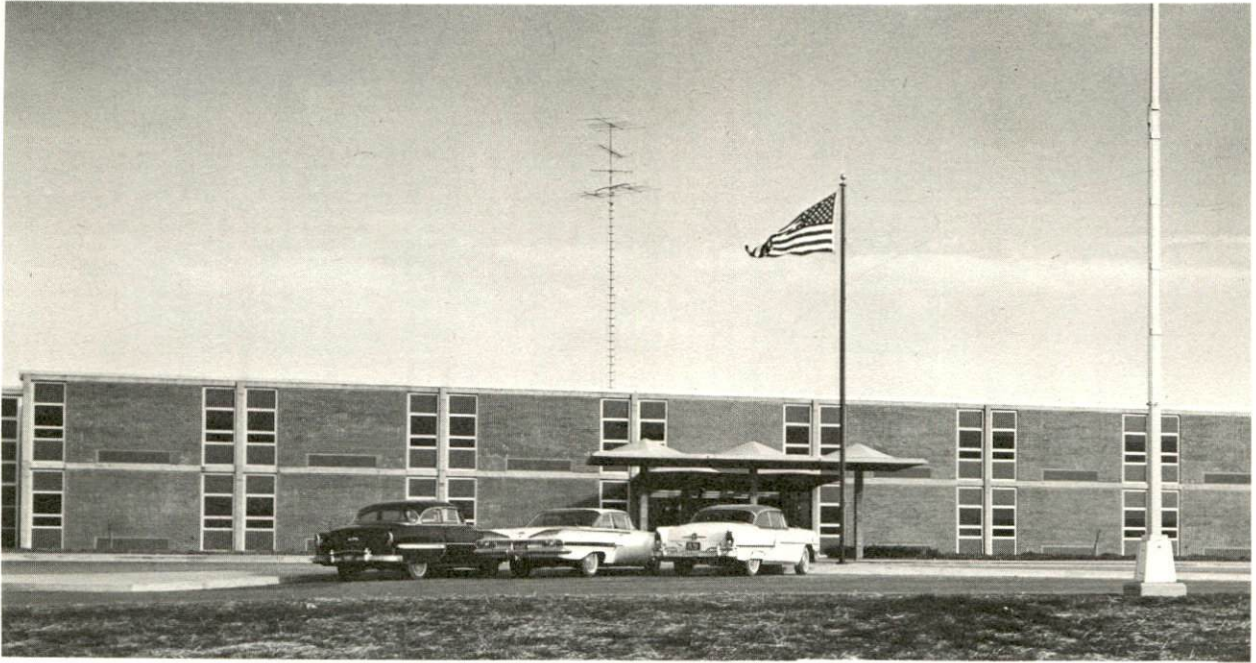
Hospitals: The T. J. Samson Community Hospital, located in Glasgow, has 170 beds and 24 bassinets. This general hospital is staffed by 30 medical doctors, 24 registered nurses, and 201 other employees and has facilities for major and minor surgery, X-ray, EKG, and laboratory services.

Also located in Glasgow is the Clinic Hospital with 40 beds and the District # 6 State Tuberculosis Hospital with 130 beds.

Parkhurst Nursing Home has 56 beds.

Construction of a new 70-room, 100-bed nursing home is planned for the near future.

Public Health: The Barren County Health Department is staffed by a full-time administrative assistant. The current program includes maternal and child care, preschool age program, dental and mental health, speech and physical therapy, communicable disease and chronic disease control.



GLASGOW HIGH SCHOOL AND GYMNASIUM



COMMUNITY HOSPITAL

RECREATION:

Local: Glasgow has a full-time recreation program with a full-time director. There are 2 city parks with a total of 90 acres. Included in these 2 parks are 3 lighted baseball diamonds, 2 tennis courts, picnic facilities, 2 shelters and restroom facilities, fishing, and a miniature golf course. The city has one indoor and one outdoor theater. There is one bowling alley. Two swimming pools are located in the city. There is also a 9-hole golf course at the Country Club.

Area: Recreation areas near Glasgow include: Mammoth Cave National Park, Kentucky Lake State Park, Lake Barkley State Park, Kentucky Dam Village State Park, Lincoln's Birthplace, Cumberland Lake, Dale Hollow Lake, and My Old Kentucky Home.

Barren River Reservoir is located 8 miles south of Glasgow and has more than 60 miles of shore line. There are recreational facilities for boating, water skiing, fishing, etc.

LABOR SUPPLY:

The Glasgow labor supply area includes Barren and the adjoining counties of Allen, Edmonson, Hart, Metcalfe, Monroe, and Warren. It is estimated that there are 6,750 men and 3,600 women in the seven-county area available for industrial employment. Barren County alone could furnish 1,300 men and 550 women of the above total.

The future labor supply will include 6,273 boys and 6,099 girls who will become 18 years of age by 1973.

ECONOMIC CHARACTERISTICS:

A large percent of the economy is based on agriculture. At the present time, the area has a total of approximately 18 million dollars in farm income, with 9 million from burley tobacco, 4.4 million from dairy and dairy products, 2.5 million from beef, one-half million from swine, one-half million from poultry, and approximately one million from other things such as hay, grain, timber, etc.

Barren County has 20,500 adult dairy cows which is the largest number of any county in the state of Kentucky. In 1966,

approximately 112 million pounds of whole milk were sold in Barren County.

Barren County ranks second in acres of burley tobacco and first in total dollars received in the state of Kentucky.

50 percent of the farms in Barren County have one or more members of the family working off the farm for added income.

Manufacturing is increasingly important to the area. There are approximately 2,923 employed in 23 industries in the Glasgow area; representing \$10,000,000 in annual income. Some of the products being manufactured are ladies suits, small automotive parts, tapered roller bearings, capacitors, men's work pants and shirts, fertilizer, feeds, cheese, raw milk products, lumber, mattresses, concrete products, brush handles, brushes and wood pulp.

In terms of retail growth, total yearly sales for 1966 were \$33,800,000. Glasgow has 100,000 plus trading area population.

Banking resources for 1966 have a combined total of \$43 million.

Total 1966 assessed valuation for Glasgow is \$52 million. Total 1966 assessed valuation for Barren County is \$135 million.

In 1966, approximately \$2,200,000 dollars was spent for general construction with 139 building permits being issued.

The estimated income per family in Glasgow for the year 1966 was approximately \$7,000.

Retail merchandising in Glasgow centers around both independent, nationwide chain and franchise operations. Customers are drawn regularly from all adjoining counties and from areas within a 35-mile radius.

EXISTING INDUSTRY:

Firm	Product	Employment		
		Male	Female	Total
Central Lumber Co.	Rough lumber	20	1	21
Cumberland Bedding Co., Inc.	Mattresses, box springs	8	3	11
Dickerson Lumber Co.	Lumber	25	1	26
Farm Service, Inc.	Feed	16	0	16

Firm	Product	Employment		
		Male	Female	Total
Furlong Iron Works, Inc.	Ornamental iron	3	1	4
Glasgow Chip Corp.	Lumber chips	(under construction)		
Glasgow Coca-Cola Bottling Works	Carbonated beverages	18	1	19
Glasgow Fertilizer Co., Inc.	Fertilizer	14	1	15
Glasgow Ice Plant	Ice	4	0	4
Glasgow Mfg. Co., Inc.	Ladies suits	53	300	353
Glasgow Publishing Corp.	Newspaper, offset printing	19	29	48
Sewell C. Harlan Lumber Co.	Hardwood lumber, pallets	17	1	18
Jones Printing Co.	Job printing, newspaper	12	4	16
Kentucky Pants Co., Inc.	Men's work pants, dress pants	70	385	455
Mallory Capacitor Co.	Electrolytic capacitors	285	505	790
McMurtrey Ready-Mix Concrete Co.	Ready mix concrete	13	0	13
National Wood Products Co.	Brush blocks	36	2	38
J. F. Pace Concrete Products, Inc.	Concrete blocks	15	0	15
P. Sorensen Mfg. Co., Inc.	Automotive parts	75	75	150
Supreme Mills	Feed, corn meal	22	2	24
Swift & Co.	Cheese	27	3	30
Ther-A-Pedic of Kentucky	Mattresses, box springs	24	6	30
Tyson Bearing Corp.	Roller bearings	145	10	155

For detailed information concerning Glasgow,
please request publication
"Industrial Resources, Glasgow, Kentucky."

This copy has been prepared by the Kentucky Department of Commerce,
Division of Research, and the cost of printing paid from state funds.