

1981

Industrial Resources: Bath County - Owingsville

Kentucky Library Research Collections
Western Kentucky University, spcol@wku.edu

Follow this and additional works at: https://digitalcommons.wku.edu/bath_cty

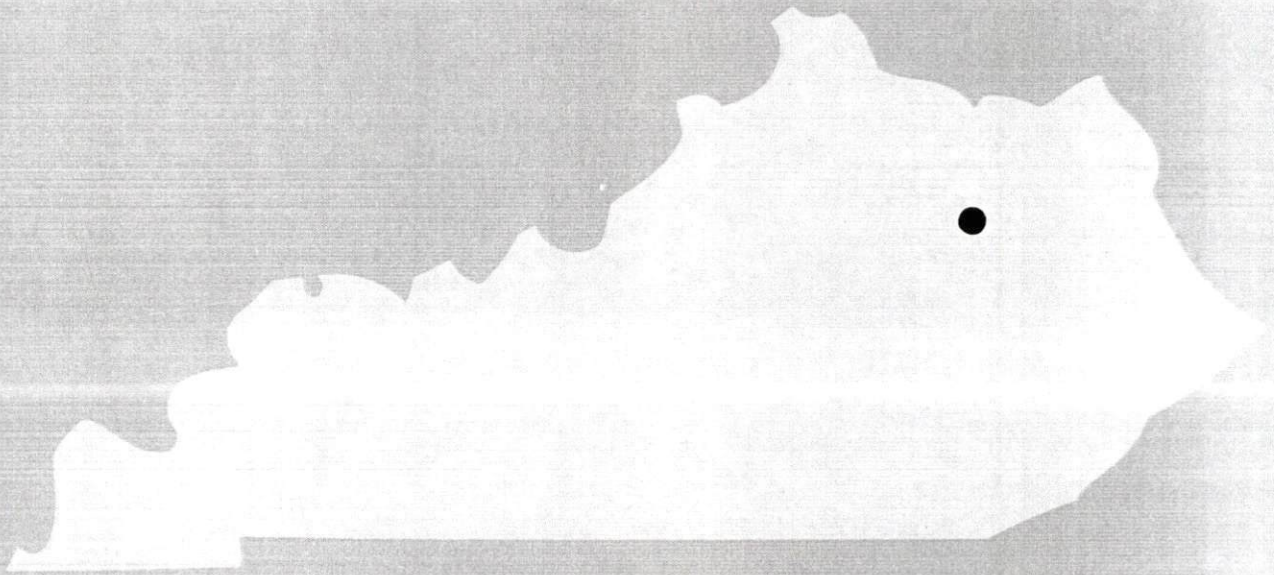
 Part of the [Business Administration, Management, and Operations Commons](#), [Growth and Development Commons](#), and the [Infrastructure Commons](#)

Recommended Citation

Kentucky Library Research Collections, "Industrial Resources: Bath County - Owingsville" (1981). *Bath County*. Paper 15.
https://digitalcommons.wku.edu/bath_cty/15

This Report is brought to you for free and open access by TopSCHOLAR®. It has been accepted for inclusion in Bath County by an authorized administrator of TopSCHOLAR®. For more information, please contact topscholar@wku.edu.

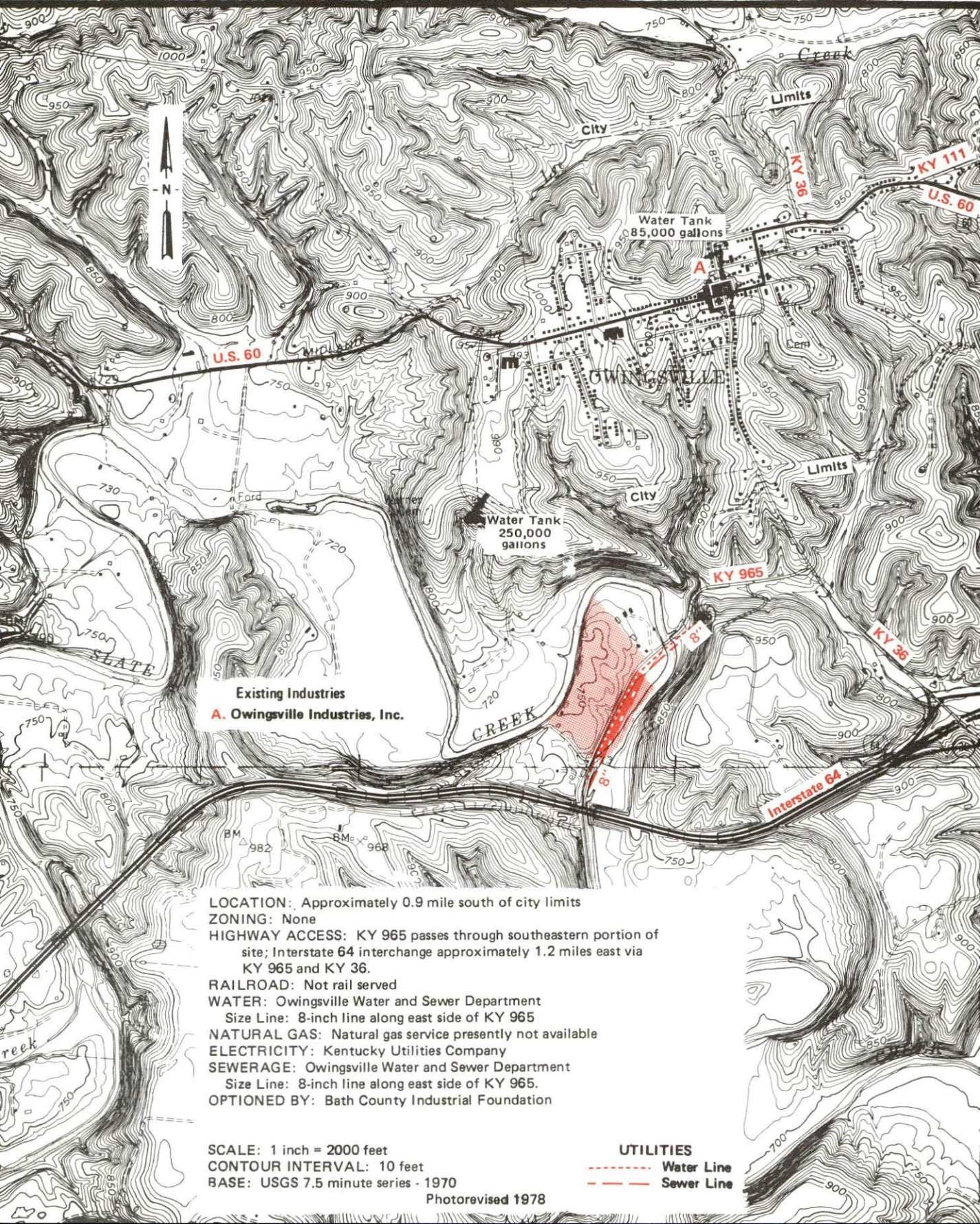
A comprehensive
report on
Owingsville, Ky.



KENTUCKY & CO.
The state that's run like a business.

OWINGSVILLE, KENTUCKY -- Site 181 -- 44 Acres

For more information contact Mr. John Wills, 122 West Main Street or Mr. Sherman Goodpaster, Chairman, Bath County Industrial Foundation, Farmers Bank, Owingsville, Kentucky 40360 or the Kentucky Commerce Cabinet, Office of Industrial Development, New Industry Division, Capital Plaza Tower, Frankfort, Kentucky 40601.



Existing Industries
A. Owingsville Industries, Inc.

- LOCATION:** Approximately 0.9 mile south of city limits
- ZONING:** None
- HIGHWAY ACCESS:** KY 965 passes through southeastern portion of site; Interstate 64 interchange approximately 1.2 miles east via KY 965 and KY 36.
- RAILROAD:** Not rail served
- WATER:** Owingsville Water and Sewer Department
Size Line: 8-inch line along east side of KY 965
- NATURAL GAS:** Natural gas service presently not available
- ELECTRICITY:** Kentucky Utilities Company
- SEWERAGE:** Owingsville Water and Sewer Department
Size Line: 8-inch line along east side of KY 965.
- OPTIONED BY:** Bath County Industrial Foundation

SCALE: 1 inch = 2000 feet
CONTOUR INTERVAL: 10 feet
BASE: USGS 7.5 minute series - 1970

Photorevised 1978

UTILITIES
- - - - - Water Line
- - - - - Sewer Line

A COMPREHENSIVE REPORT ON
OWINGSVILLE, KENTUCKY

Prepared by
The Kentucky Department of Commerce
Division of Research and Planning
in cooperation with
The Owingsville Chamber of Commerce

1981

Program manager - Brenda Roberts; research - John McMurray; clerical - Linda Fint; graphics - Frank Ferrante, Tony Cecconi, Jimmy Thompson; cartography - Site Evaluation Section, Division of New Industries. Cost of printing paid from state funds.

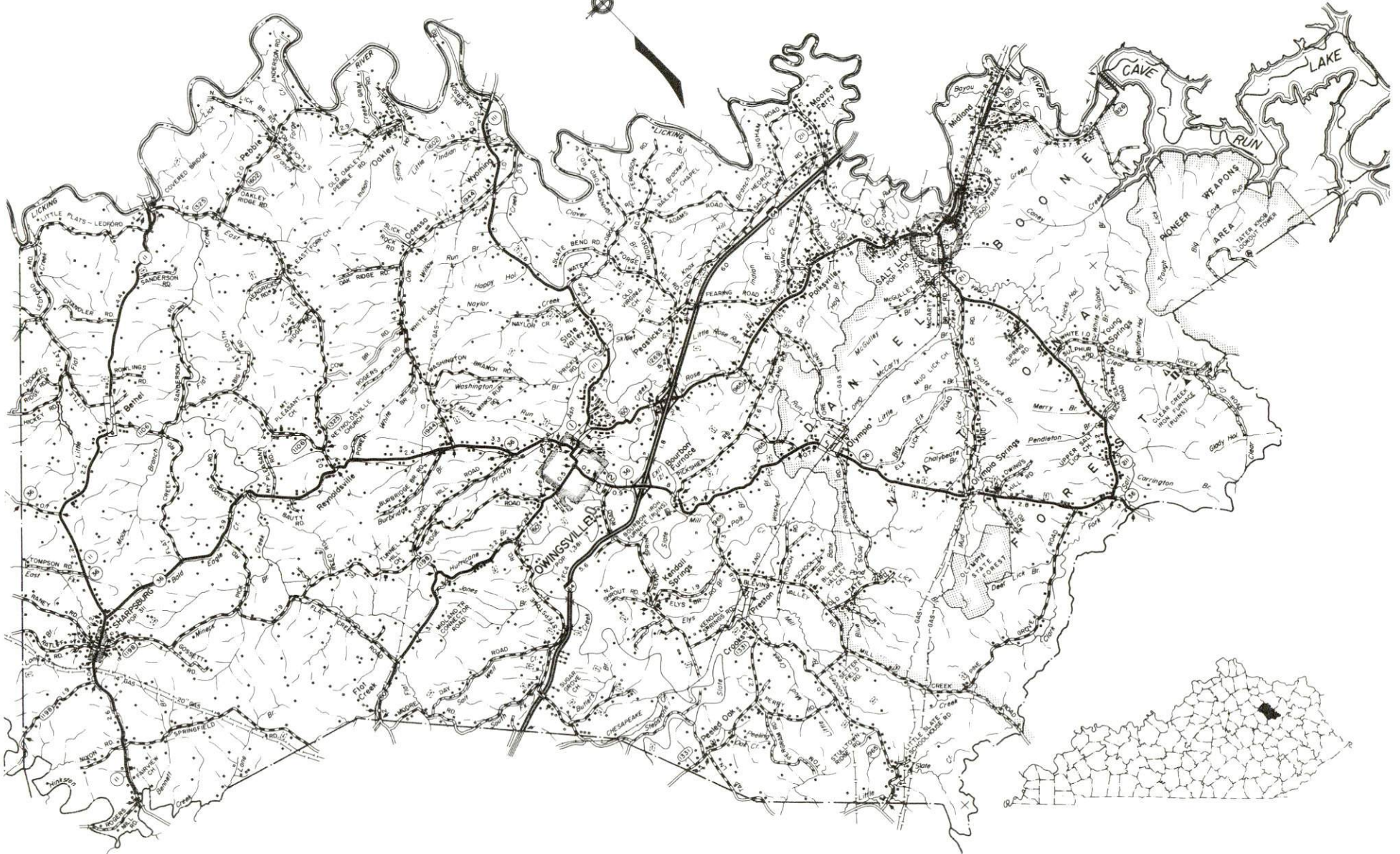
TABLE OF CONTENTS

<u>Chapter</u>	<u>Page</u>
INDUSTRIAL SITES	i
THE LABOR MARKET AREA	1
Population	1
Labor Force Characteristics of Residents, 1980	1
Estimated Male Labor Supply	2
Estimated Female Labor Supply	2
Owingsville Manufacturing Firms, Their Products and Employment	3
Labor Organizations in Manufacturing Firms	3
Industrial Services	3
Average Weekly Wages by Industry, by Place of Work, 1980	4
Per Capita Personal Income	6
TRANSPORTATION	7
Rail	7
Highways	7
Truck Service	8
Air	9
Bus	10
Rental Services	10
Water	10
POWER AND FUEL	11
Electricity	11
Natural Gas	12
Other Fuels	12
WATER AND SEWERAGE	13
Water	13
Raw Water	13
Sewerage	14
CLIMATE	15

<u>Chapter</u>	<u>Page</u>
LOCAL GOVERNMENT	16
City	16
County	16
Assessed Value of Property	16
Property Taxes	16
Combined State and Local Rates Per \$100 Valuation, 1980	17
Planning and Zoning	17
Safety	18
Police	18
Fire	18
Rescue Service	18
Refuse Collection and Disposal	18
EDUCATION	19
Public Schools	19
Area Colleges and Universities	20
Vocational Schools	21
HEALTH	23
Local Medical Personnel	23
Hospitals	23
Ambulance Service	24
Public Health	24
OTHER LOCAL FACILITIES	25
Communications	25
Library Services	25
Religious Institutions	26
Financial Institutions	26
Hotels and Motels	26
Clubs and Organizations	26
RECREATION	27

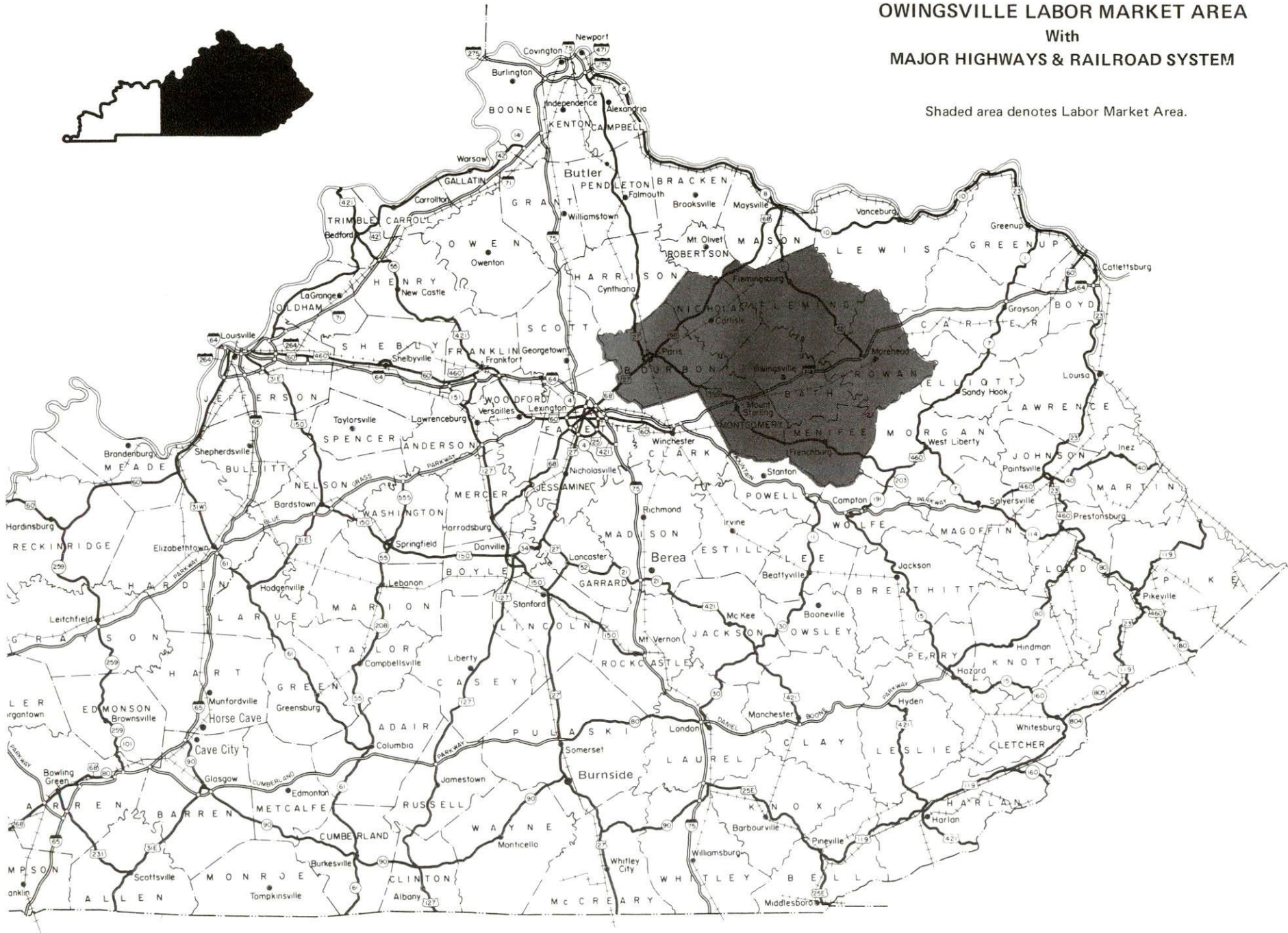
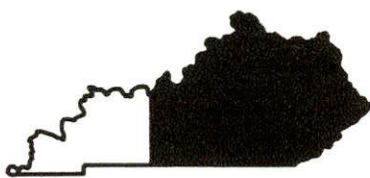
PREPARED BY THE
KENTUCKY DEPARTMENT OF TRANSPORTATION
OFFICE OF TRANSPORTATION PLANNING
DIVISION OF FACILITIES PLANNING
IN COOPERATION WITH THE
U.S. DEPARTMENT OF TRANSPORTATION
FEDERAL HIGHWAY ADMINISTRATION

1980 EDITION
GENERAL HIGHWAY MAP
BATH COUNTY
KENTUCKY



OWINGSVILLE LABOR MARKET AREA With MAJOR HIGHWAYS & RAILROAD SYSTEM

Shaded area denotes Labor Market Area.



THE LABOR MARKET AREA

The Owingsville Labor Market Area includes Bath County and the adjoining Kentucky counties of Bourbon, Fleming, Menifee, Montgomery, Nicholas, and Rowan.

Area	POPULATION		Percent Nonwhite
	1980	1970	
Owingsville	1,419	1,381	6.9
Labor Market Area	93,122	82,009	N/A
Bath County	10,025	9,235	3.3
Bourbon County	19,405	18,476	10.2
Fleming County	12,323	11,366	1.9
Menifee County	5,117	4,050	1.3
Montgomery County	20,046	15,364	5.4
Nicholas County	7,157	6,508	1.8
Rowan County	19,049	17,010	2.1

Note: The 1980 counts of population by race are provisional.

Source: U.S. Department of Commerce, Bureau of the Census, March 1981, as published in Special Report No. 8, State Data Center, Urban Studies Center, University of Louisville, March 1981.

LABOR FORCE CHARACTERISTICS OF RESIDENTS, 1980

	Bath County	Labor Market Area
Civilian Labor Force	3,728	41,824
Employment	3,155	38,094
Agricultural	681	4,751
Nonagricultural	2,474	33,343
Unemployment	573	3,730
Rate of Unemployment (%)	15.4	8.9

Source: Kentucky Department for Human Resources, Kentucky Labor Force Estimates, Annual Averages, 1980.

ESTIMATED MALE LABOR SUPPLY
OWINGSVILLE LABOR MARKET AREA

Area	Current			Future	
	Total	Not in Labor Force	Unemployed	Under-employed	Reaching 18 years of age before 1986
Labor Market Area*	3,939	582	1,237	2,120	3,828
Bath	428	66	182	180	428
Bourbon	610	132	208	270	893
Fleming	434	85	159	190	531
Menifee	174	33	81	60	226
Montgomery	795	121	284	390	791
Nicholas	215	49	76	90	309
Rowan	1,283	96	247	940	650

*Additional workers may be drawn from other nearby counties.

Note: Not in Labor Force - persons who would enter the labor force if suitable employment were available; Unemployed - persons unemployed and actively seeking work; Underemployed - persons employed but working only 14 to 26 weeks per year.

Sources: Kentucky Department for Human Resources, Kentucky Labor Supply Estimates by County, 1979. Kentucky Department of Commerce, Future Labor Supply before 1986.

ESTIMATED FEMALE LABOR SUPPLY
OWINGSVILLE LABOR MARKET AREA

Area	Current			Future	
	Total	Not in Labor Force	Unemployed	Under-employed	Reaching 18 years of age before 1986
Labor Market Area*	3,220	247	1,133	1,840	3,530
Bath	366	28	168	170	405
Bourbon	643	60	193	390	840
Fleming	353	36	147	170	528
Menifee	136	12	74	50	206
Montgomery	626	55	261	310	661
Nicholas	178	20	68	90	257
Rowan	918	36	222	660	633

*Additional workers may be drawn from other nearby counties.

Note: Not in Labor Force - persons who would enter the labor force if suitable employment were available; Unemployed - persons unemployed and actively seeking work; Underemployed - persons employed but working only 14 to 26 weeks per year.

Sources: Kentucky Department for Human Resources, Kentucky Labor Supply Estimates by County, 1979. Kentucky Department of Commerce, Future Labor Supply before 1986.

OWINGSVILLE MANUFACTURING FIRMS,
THEIR PRODUCTS AND EMPLOYMENT

<u>Firm (Establishment date)</u>	<u>Product</u>	<u>Employment</u>		
		<u>Total</u>	<u>Male</u>	<u>Female</u>
Bath County News Outlook (1879)	Newspaper	6	1	5
Kentucky Packing Company (1978)	Meat processing	2	2	0
Owingsville Industries, Inc. (1977)	Reamers, drills, cutting tools	13	12	1

Source: Kentucky Department of Commerce, Division of Research and Planning.

LABOR ORGANIZATIONS IN MANUFACTURING FIRMS

Currently, there are no labor unions representing manufacturing workers in Owingsville.

INDUSTRIAL SERVICES

<u>Type of Services</u>	<u>Location</u>	<u>Mileage from Owingsville</u>
Tool & Die, Machine & Pattern Shops	Mt. Sterling	14
Metal Service Centers	Lexington	48
Heat Treating	Georgetown	58
Metal Finishers	Lexington	48
Electric Motor Repair	Lexington	48

Source: Kentucky Directory of Selected Industrial Services, 1979.

AVERAGE WEEKLY WAGES BY INDUSTRY,
BY PLACE OF WORK, 1980

	Bath County	Bourbon County	Fleming County	Menifee County
All Industries	\$182.85	\$205.02	\$182.43	\$184.09
Mining & Quarrying	0	*	*	*
Contract Construction	249.16	272.28	233.45	*
Manufacturing	*	228.97	167.13	117.54
Transportation, Communications & Public Utilities	357.86	278.95	289.79	203.23
Wholesale & Retail Trade	125.71	175.30	157.11	151.92
Finance, Insurance & Real Estate	167.29	242.29	190.78	*
Services	112.37	135.07	166.50	98.27
State/Local Government	200.39	206.34	198.09	198.45
Other	*	199.97	58.03	0

	Montgomery County	Nicholas County	Rowan County
All Industries	\$187.02	\$214.30	\$208.43
Mining & Quarrying	0	0	423.21
Contract Construction	225.50	299.43	282.27
Manufacturing	206.66	*	193.56
Transportation, Communications & Public Utilities	248.24	348.48	303.24
Wholesale & Retail Trade	148.43	176.85	144.72
Finance, Insurance & Real Estate	205.03	204.77	261.80
Services	152.86	122.46	205.80
State/Local Government	215.22	181.81	240.37
Other	*	163.74	*

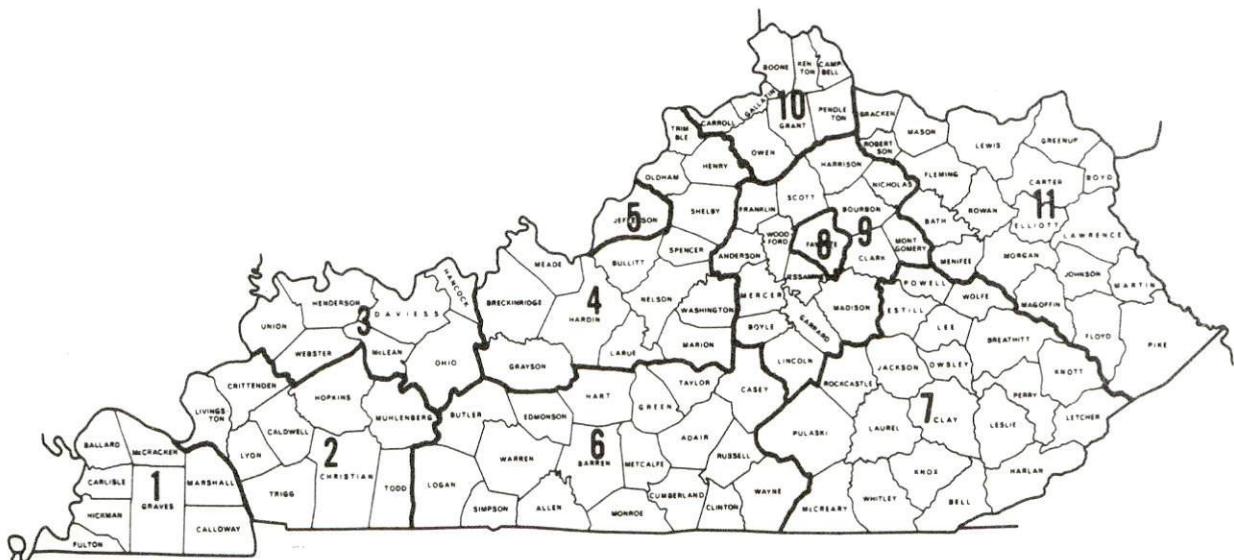
*Not disclosed.

Note: Excludes domestic workers, railway workers, certain nonprofit corporations, majority of federal government workers, and self-employed workers.

Source: Kentucky Department for Human Resources, Average Weekly Wages of Workers Covered by Kentucky Unemployment Insurance Law, 1980.

Occupational wage rates for specific industries are usually not available to most government agencies, and wage data furnished to state employment agencies by individual industrial employers is protected from disclosure by federal law. The most reliable up-to-date wage information can be obtained by direct contact with local employers.

Associated Industries of Kentucky, a voluntary organization of Kentucky businesses, regularly collects occupational wage rates and fringe benefits data from participating member firms. Data is compiled for over 127 clearly defined office, production, and service occupations. Tabulations are published for eleven regions of Kentucky, as shown on the map below. It should be noted that the data may be weighted by the preponderance of firms in the larger cities and may be somewhat higher than the rates paid in the smaller communities. Data from these tabulations are available, upon request, from the Kentucky Department of Commerce, Frankfort, Kentucky 40601.



Associated Industries of Kentucky Area Wage Surveys

PER CAPITA PERSONAL INCOME

<u>Area</u>	<u>1979</u>	<u>1975</u>	<u>Percent Change</u>
Bath County	\$5,358	\$3,823	40.2
Labor Market Area Range	\$4,303 - 7,053	\$2,779 - 4,894	N/A
Kentucky	7,052	4,882	44.4
U.S.	8,637	5,861	47.4

Source: U.S. Department of Commerce, Bureau of Economic Analysis, April 1981. U.S. Department of Commerce, Bureau of Economic Analysis, August 1981.

TRANSPORTATION

Rail

Line serving Owingsville - The Chessie System at Preston, six miles south of Owingsville

Services - Main line; one eastbound and one westbound freight stops daily; one eastbound and one westbound through freights daily; switching facilities; team track space for eight cars, pass siding space for 50 cars. Piggyback facilities are located at Huntington, West Virginia, 79 miles east of Owingsville.

For details on routing, schedules, rates, and services, contact:

The Chessie System
Real Estate and Industrial
Development Department
808 Dixie Terminal Building
Cincinnati, Ohio 45202
(513) 369-5258

Highways

Owingsville is served by Interstate 64, U.S. 60 and Kentucky Highways 36* and 111. Interstate 64, a major east-west highway, is routed through Bath County with an interchange 2 miles south of Owingsville and an interchange 3 miles east of the city. Interstate 64 connects with Interstate 75, 42 miles west of Owingsville.

*A \$750,000 project has been completed on a section of Highway 36 near Owingsville. A new bridge has been constructed and a sharp curve has been realigned.

Truck Service

<u>Company</u>	<u>Home Office</u>
Bronaugh Motor Express, Inc.*	1025 Nandino Boulevard Lexington, Kentucky 40511
Overnite Transportation Company**	1000 Semmes Avenue Richmond, Virginia 23209
Swinford Trucking**	P. O. Box 85 Cynthiana, Kentucky 41031
Smith's Transfer Corporation*	P. O. Box 1000 Staunton, Virginia 24401
<u>Other Freight Services</u>	<u>Nearest Shipping Center or Home Office</u>
Purolator Courier Corporation***	Lexington, 48 miles distant
United Parcel Service****	Clay City, 29 miles distant

HIGHWAY MILES AND TRUCK TRANSIT TIME IN DAYS FROM
OWINGSVILLE, KENTUCKY, TO SELECTED MARKET CENTERS

City	Delivery		City	Delivery	
	Highway Miles	Time TL		Highway Miles	Time TL
Atlanta, Ga.	410	2-3	Los Angeles, Ca.	2,228	7-8
Baltimore, Md.	510	3	Louisville, Ky.	120	1
Birmingham, Ala.	446	2	Nashville, Tenn.	258	1
Chicago, Ill.	400	3	New Orleans, La.	775	3
Cincinnati, Ohio	126	1	New York, N. Y.	682	4
Cleveland, Ohio	365	2-3	Pittsburgh, Pa.	342	3
Detroit, Mich.	385	3	St. Louis, Mo.	383	3
Knoxville, Tenn.	223	1			

Note: Mileage computations are via the best interstate or primary highways, not necessarily the most direct route of travel.

Sources: Rand McNally Road Atlas, 1979. Official Kentucky Mileage Map, 1979. Delivery time - Bronaugh Motor Express, Inc., 1025 Nandino Boulevard, Lexington, Kentucky 40511.

*Interstate service only.

**Interstate and intrastate service.

***For regular scheduled pickups or for occasional pickups, arrangements must be made with the Lexington office of Purolator Courier Corporation.

****For regular scheduled pickups or for occasional pickups, arrangements must be made with the Louisville office of United Parcel Service.

Air

Local Airports

Location: Mt. Sterling-Montgomery County Airport*
2 miles west of Mt. Sterling;
16 miles west of Owingsville

Runways: 1 paved
Length: 2,800 feet

Traffic Control: Wind sock and tetrahedron

Lighting: Sunrise to sunset, rotating beacon, VASI
and REIL, 100 octane gasoline, charter,
flight instruction, tie-down hangar,
major and minor A & E repairs

Air Freight Service: Chartered air freight services must
be arranged.

Location: Morehead-Rowan County Airport
5 miles southwest of Morehead;
17 miles east of Owingsville

Runways: 1 paved
Length: 2,600 feet

Traffic Control: Wind sock

Lighting: Runway lights, rotating beacon, lighted
wind sock

Services: 100 octane fuel, aircraft charter and
leasing, flight instruction, ground school

Air Freight Service: Chartered air freight services must
be arranged.

(Contd.)

*Recent improvements totaling \$200,000 have been completed. A paved parking ramp, a 1,400 foot parallel taxiway and a storage hangar were the main improvements. An application to provide funding for land purchase has been made. The \$350,000 project would permit the construction of a new 4,000 foot paved runway.

Nearest Scheduled Commercial Airline Service

Location: Blue Grass Field
4 miles west of Lexington, Kentucky;
52 miles west of Owingsville

Runways: 2 paved
Length: 6,500 feet; 3,500 feet

Traffic Control: Tower

Lighting: Approach lighting system, beacon,
runways and obstructions lighted, VASI

Services: Delta, Frontier, Piedmont, and USAir
airlines; Tennessee Airways commuter
air carrier; fuel - 24-hour service,
100, and jet fuel; repair service -
major A & E repairs, Certified
Avionics repair station; National
Weather Service; flight instructions;
charter service; storage; taxi,
limousine and car rentals; restaurant

Air Freight Service: Air freight terminal

Bus - Greyhound Bus Lines

Rental Services - Auto, truck, and trailer rentals are available in
Morehead, 20 miles distant.

Water

Owingsville is 63 miles from a point on the Ohio River at Maysville
where a 9-foot navigation channel is maintained. Public riverports
are being developed at Maysville and at Ashland, 73 miles east of
Owingsville.

POWER AND FUEL

Electricity

Company serving Owingsville and parts of Bath County - Kentucky
Utilities Company
Source of power - Kentucky Utilities Company
Total generating capacity - 2,383,767 KW
For industrial rates contact:

Industrial Development Department
Kentucky Utilities Company
One Quality Street
Lexington, Kentucky 40507
(606) 255-1461

Companies serving major portions of Bath County - Clark Rural
Electric Cooperative Corporation; Fleming-Mason Rural Electric
Cooperative Corporation
Source of power - East Kentucky Power Cooperative
Total generating capacity - 1,318,010 KW
For industrial rates contact:

Industrial Development Division
East Kentucky Power Cooperative
P. O. Box 707
Winchester, Kentucky 40391
(606) 744-4812

and/or

Clark RECC
P. O. Box 748
Winchester, Kentucky 40391
(606) 744-4251

and/or

Fleming-Mason RECC
P. O. Drawer 328
Flemingsburg, Kentucky 41041
(606) 845-2661

Natural Gas

Company serving Owingsville - Delta Natural Gas Company, Inc.
Source of supply - Columbia Gas Transmission Corporation
Size of transmission mains - 30 inch (supplier);
3 and 4 inches (distributor)
Distribution mains - 2 inches
Distribution pressure - 5 to 17 psi
Btu content - 1,000 per cubic foot
Specific gravity - 0.568
For rates and supplies contact:

Delta Natural Gas Company, Inc.
Route 1, Box 30-A
Winchester, Kentucky 40391
(606) 744-6171

Other Fuels

Propane

Miller LP Gas Company 133 West Main Street Owingsville, Kentucky 40360	Southern States Cooperative, Inc. Brooks Avenue Owingsville, Kentucky 40360
--	---

Fuel oils

Distillate fuel oil -

Smith Oil Service
(Marathon)
U.S. Highway 60
Owingsville, Kentucky 40360

Residual fuel oil - Arrangements must be made with the refinery.

Low sulphur content coal - Available in Kentucky.

WATER AND SEWERAGE

Water

Company serving Owingsville - Owingsville Water and Sewer Department
P. O. Box 323
Owingsville, Kentucky 40360
(606) 674-6361

Source - Slate Creek
Treatment plant capacity - 360,000 gallons per day
Average daily consumption - 125,000 to 150,000 gallons
Peak daily consumption - 200,000 gallons
Type treatment - Coagulation, settling, filtration, chlorination,
fluoridation
Storage capacity - 325,000 gallons
Size lines - 8, 6 and 4 inches
Average pressure - 50 psi
Average temperature - 55 degrees F.

MONTHLY WATER RATES

First	1,000 gallons	\$4.30 (Minimum)
Next	9,000 gallons	1.65 per M gallons
Next	10,000 gallons	1.30 per M gallons
All over	20,000 gallons	1.00 per M gallons

Tap-on charge: 5/8- and 3/4-inches \$ 300
2-inches
and larger 1,000

Raw Water

Surface water sources - Licking River and Cave Run Lake
Average discharge - Licking River at Farmers, Kentucky - 1,071 cfs
(USGS, 41 years, unadjusted); Cave Run Lake near Farmers,
Kentucky - maximum contents, 479,310 acre-feet (USGS)
Expected ground water yield - 5 gpm or less over most of the county;
5 to 50 gpm along the Licking River on the eastern boundary of the
county.

Sewerage

Company serving Owingsville - Owingsville Water and Sewer Department*

P. O. Box 323

Owingsville, Kentucky 40360

(606) 674-6361

Design capacity - 200,000 gallons per day

Average daily flow - 160,000 gallons (estimate)

Treatment - Primary and secondary

Type treatment - Drying beds, trickling filter, clarifier

Treated effluent discharged into - Dry Branch of Slate Creek

Size of sanitary mains - 8 inches

Rates - 50 percent of monthly water bill

Tap-on charge: \$200

*Step 1 of a 201 Facilities Plan has been completed. An SSES study is under way.

CLIMATE

Bath County

Temperature

Normal (30-year record)	55.2 degrees
Average annual 1980	54.3 degrees
Record highest, September 1954 (36-year record)	103.0 degrees
Record lowest, January 1963 (36-year record)	-21.0 degrees
Normal heating degree days (30-year record) (Heating degree day totals are the sums of negative departures of average daily temperatures from 65 degrees F.)	4,729

Precipitation

Normal (30-year record)	44.49 inches
Mean annual snowfall (36-year record)	17.00 inches
Total precipitation 1980	34.69 inches
Mean number days precipitation (.01 inch or more) (36-year record)	131
Mean number days thunderstorms (36-year record)	47

Prevailing Winds (17-year record)

South

Relative Humidity

1 a.m.	77 percent (16-year record)
7 a.m.	81 percent (17-year record)
1 p.m.	60 percent (17-year record)
7 p.m.	64 percent (17-year record)

Source: U.S. Department of Commerce, Environmental Science
Services Administration, Climatological Data, 1980.
Station of record: Lexington, Kentucky.

LOCAL GOVERNMENT

City

Structure - Mayor - 4-year term; 6 council members - 2-year terms
Budget 1981 - General Fund \$ 74,059.97
 Water and Sewer Fund 125,000.00
Fees and licenses - Occupational license fees range from \$5 to \$100
annually

County

Structure - County Judge/Executive - 4-year term;
3 commissioners - 4-year terms
Budget 1980-81 - General Fund \$338,140; Road Fund \$338,190

Assessed Value of Property, 1981

<u>Classes of Property</u>	<u>Owingsville</u>	<u>Bath County</u>
Real Estate	\$11,251,150	\$76,575,557
Tangibles	2,519,944	15,070,984

Property Taxes

All property in Kentucky is assessed at 100 percent of fair cash value.

Land and buildings are taxed by the state and may be taxed by local jurisdictions. The state rate is \$0.241 per \$100 of assessed valuation.

Manufacturing machinery, raw materials inventories, pollution control equipment, and goods in the process of manufacture are not subject to local taxation. The state rate is \$0.15 per \$100.

Other tangible personal property owned by manufacturers (automobiles, trucks, finished goods, office furniture, office equipment) is taxed by the state at \$0.45 per \$100 and may be taxed by local jurisdictions.

Property stored in public warehouses in a transit status is not subject to local taxation. The state rate is only \$0.015 per \$100.

Intangible personal property located in Kentucky (money in hand, shares of stock, notes, bonds, accounts receivable, and other credits) is taxed by the state at \$0.25 per \$100, and is not subject to local taxation.

Private leaseholds in industrial facilities owned by cities or counties and financed by industrial revenue bonds are subject to a state tax of \$0.015 per \$100 of value (essentially the lessee's equity, adjusted for appreciation or depreciation). Local taxation is not permitted.

Combined State and Local Rates Per \$100 Valuation, 1980*
(100% assessment)

	<u>Inside City of Owingsville</u>	<u>Outside City</u>
1. Land and buildings	\$0.935	\$0.635
2. Mfg. machinery, raw materials, goods in process, pollution control equipment	0.150	0.150
3. Finished goods, office equipment, vehicles, other tangibles	1.144	0.844
4. Intangibles (accounts receivable, notes, bonds, etc.)	0.250	0.250
5. Leaseholds in industrial revenue bond financed plants	0.015	0.015

Planning and Zoning

Joint agency - Bath County Planning Commission**

Zoning enforced - City of Owingsville

Subdivision regulations enforced - City of Owingsville

Mandatory state codes enforced - Kentucky Plumbing Code, National Electric Code, Kentucky Boiler Regulations and Standards, National Fire Protection Association Standards of Safety (for buildings with an occupancy of less than 100 persons), Kentucky Building Code (modeled after BOCA code and applying to buildings with an occupancy of 100 or more persons)

*Kentucky Department of Commerce.

**Includes the cities of Owingsville, Salt Lick and Sharpsburg. The Bath County Planning Commission is inactive at the present time.

Safety

	<u>Owingsville</u>	<u>Bath County</u>
Police		
Total staff	3	4
Radio-patrol cars	1	4
Fire		
American Insurance Association Fire Rating	7	10
Full-time staff	3	The Owingsville Fire Department provides service in the county.
Volunteers	30	

Rescue Service

Bath County Disaster Emergency Service Rescue Squad:
 Number of volunteers - 20
 Equipment - 3 rescue vehicles (1 pickup truck, 1 4 x 4 truck, 1 6 x 6 truck), 2 boats (1 equipped with an outboard motor), 2 generators, flood lights and assorted rescue equipment
 Personnel training - Members receive training in advanced first aid and rescue training techniques.

Refuse Collection and Disposal*

	<u>Owingsville</u>	<u>Bath County</u>
Type service	Private	Private
Fee charged:		
residential	\$6 per month	\$6 per month
business	Negotiable	Negotiable
industrial	Negotiable	Negotiable
Collection frequency:		
residential	Weekly	Weekly
business	Negotiable	Negotiable
industrial	Negotiable	Negotiable
Disposal method	Sanitary landfill	Sanitary landfill

*A transfer station is located at Owingsville where residents can deposit garbage and trash free of charge.

EDUCATION

Public Schools

Bath County*

Total Enrollment (December 1980)	1,970
Elementary	1,385
High School	576
Student-Teacher Ratio	19-1
Elementary	22-1
High School	15-1
Percent High School Graduates to College	41.3
Expenditures Per Pupil (1979-80)	\$1,188.42
Bonded Indebtedness (June 30, 1980)	\$563,000

*The Bath County School System has projects and improvements totaling \$1,340,000 under way. A new agriculture complex is under construction and is expected to be completed in 1982. The complex will contain a farm machinery shop, a wood shop, a green house, a head house, class rooms, a locker room equipped with showers, and a barn with a machinery and storage yard.

Area Colleges and Universities

<u>Name</u>	<u>Location (Miles distant)</u>	<u>Enrollment (Fall, 1980)</u>	<u>Highest Degree Conferred</u>
Morehead State University	Morehead (20)	7,163	Masters, Specialist*
Maysville Community College	Maysville (42)	513	Associate
Lexington Technical Institute	Lexington (48)	2,111	Associate
Transylvania University	Lexington (48)	810	Masters**
University of Kentucky	Lexington (48)	23,468	Doctorate, M.D., D.M.D., J.D.
Kentucky Christian College	Grayson (52)	495	Baccalaureate
Georgetown College	Georgetown (58)	1,270	Masters
Midway Junior College	Midway (59)	316	Associate
Asbury College	Wilmore (60)	1,222	Baccalaureate
Eastern Kentucky University	Richmond (64)	14,185	Masters, Specialist***

*Joint doctoral degree programs are offered in cooperation with the University of Kentucky, Lexington.

**Courses in the masters degree program are taught on the Transylvania campus by faculty members of Xavier University of Cincinnati. The degree is issued by Xavier University.

***Joint doctoral degree programs are offered in cooperation with the University of Kentucky, Lexington, and cooperative doctoral degree programs are offered with Michigan State University and the University of Maryland.

Vocational Schools

Both the state vocational-technical schools and the area vocational education centers are operated by the Kentucky Department of Education. The state vocational-technical schools enroll persons full time who are at least 16 years of age and not in school. These students attend classes for six hours each day. The area vocational education centers are designed to accommodate high school students who are at least 15 years of age. These students attend vocational school for three hours each day. The state vocational-technical schools and the area education centers offer evening courses to enable working adults to upgrade current job skills.

Nearest State School

Location	Central Kentucky State Vocational-Technical School
Miles Distant	Lexington 48 miles west of Owingsville
Curriculum	Business and Office Clerical Secretarial Consumer and Home Economics Commercial Foods Health and Personal Services Occupations Cosmetology Dental Assistant Nurse's Aide Practical Nursing Surgical Technician Industrial Education Auto Body Repair Auto Mechanics Carpentry Drafting Electronics Graphic Arts Industrial Electricity Machine Shop Masonry Sheet Metal, Heating and Cooling Welding Learning Resource Center

(Contd.)

The Lexington Technical Institute is a unit of Kentucky's community college system operating on the University of Kentucky campus. Courses parallel university offerings and are transferable to the Lexington U of K campus or to another 4-year institution either public or private. The Institute awards the Associate in Arts degree and the Associate in Applied Science degree.

The Associate in Applied Science Degree is awarded in the following programs: Accounting Technology; Architectural Technology; Civil Engineering Technology; Data Processing Technology (Business Option, Science Option); Dental Hygiene; Dental Laboratory Technology; Electrical Engineering Technology (Electronics Option; Management Technology (Business Option); Mechanical Engineering Technology; Nursing; Radiologic Technology; Real Estate; Respiratory Therapy; Secretarial Administration; Transportation.

Nearest Area Education Center

Location	Montgomery County Area Education Center
Miles Distant	Mt. Sterling 14 miles west of Owingsville
Curriculum	Business and Office Accounting/Jr. Management General Clerical Secretarial Industrial Education Auto Mechanics Carpentry Drafting Industrial Electricity

Arrangements can be made to provide training in the specific production skills required by an industrial plant. Instruction may be conducted either in the vocational school or in the industrial plant, depending upon the desired arrangement and the availability of special equipment.

HEALTH

Local Medical Personnel*

Physicians - 3
Dentists - 3

Hospitals

<u>General Hospital</u>	<u>Location</u>	<u>Beds</u>
Mary Chiles Hospital	Mt. Sterling, 14 miles distant	104
St. Claire Medical Center	Morehead, 20 miles distant	170

Mary Chiles Hospital

General hospital facilities and services - Operating rooms, including a three-bed recovery room and a 10-bed postoperative suite, emergency room (staffed 24 hours), physical therapy, urology department, X-ray department, a four-bed intensive care/cardiac care unit, laboratory, delivery room, pharmacy, dietary department, OB/GYN facilities, radiology, respiratory therapy and outpatient services

Medical staff - 12 doctors on staff plus 28 doctors from surrounding counties and 240 hospital support personnel

St. Claire Medical Center

General hospital facilities and services - Inpatient and outpatient services, 14-station emergency room, 4 operating rooms, 3 delivery rooms, 10-bed intensive/coronary care unit, physical therapy department, diagnostic radiology (ultrasound, nuclear medicine, special procedures), EKG laboratory, blood bank, pharmacy, respiratory therapy, clinical and histology laboratory, medical library, home health and homemaker services, speech pathology, mental health

Medical staff - 5 general surgeons, anesthesiologist, 2 urologists, 2 orthopedists, 3 pediatricians, 3 obstetricians, radiologist, 4 family medicine physicians, 5 internal medicine specialists, pathologist, 2 oral surgeons, EENT surgeon, psychiatrist, 40 registered nurses, 16 licensed practical nurses, 9 laboratory technicians, 7 X-ray technicians, 3 pharmacists, 2 physical therapists, 3 respiratory therapists

*Additional physicians and dentists for consultation are available in Mt. Sterling and Morehead.

Ambulance Service

Name - Keal Funeral Home

Staff - 3 drivers

Service - 24-hour service

Equipment - 3 ambulances (2 fully equipped, 1 standby)

Name - Richardson and Hunt Funeral Home

Staff - 3 emergency medical technicians, 4 drivers

Service - 24-hour service

Equipment - 2 ambulances, fully equipped

Public Health

Facility - Bath County Health Center

Staff - 1 registered nurse, 1 health environmentalist, 1 clerk,
2 community health workers, 1 CETA worker and 1 dental health
educator (part time)

Facility - Gateway District Health Department*

Staff - 57 total staff (including health center staffs in 5
counties), 1 physician, 11 registered nurses, 5 environmentalists,
6 community health workers, 1 dental aid, 2 nutritionists, 1
health planner, 3 health educators, 1 social worker, 1
administrator and 15 clerks

*Serves Bath, Menifee, Montgomery, Morgan and Rowan Counties.

OTHER LOCAL FACILITIES

Communications

Telephone - General Telephone Company
Services - Standard

Telegraph - Western Union
Services - Toll free number (800-325-5100)

Postal - U.S. Post Office
Class - Second
Mail received - Twice daily
Mail dispatched - Once daily

Newspapers - The Bath County News Outlook
Weekly and circulation - 3,100
Other papers
received from - Lexington, Louisville and Mt. Sterling, Kentucky

Radio -
Stations received from - Mt. Sterling, Morehead, Lexington and
Louisville, Kentucky; Cincinnati, Ohio

Television -
Reception from - Lexington, Kentucky; Huntington and Charleston,
West Virginia; Cincinnati, Ohio
Kentucky Educational
Television - Morehead transmitter, Channel 38

Library Services

Public library - Bath County Memorial Library
Size collection - 20,000 volumes
Circulation, 1979 - 17,877
Services - Newspapers, magazines, periodicals, records, record
players, slides, films and film strips, projectors, art, television
set, information file material, community reading room, photo
copy machine, bookmobile, microfilm reader-printer, Interlibrary
Loan

Religious Institutions

Number of churches - 9

Denominations - Baptist
Catholic
Christian
Church of Christ
Church of God
Grace Gospel Tabernacle
Methodist

Nearest Synagogues - Lexington, 48 miles distant

Congregations - Adath Israel (reform)
Ohavey Zion (traditional)

Financial Institutions

<u>Banks</u>	<u>Assets</u>	<u>Deposits</u>	<u>Statement Date</u>
Farmers Bank	\$13,381,084.17	\$12,065,067.05	12/31/80
Owingsville Banking Company	13,467,497.99	11,867,555.12	12/31/80

Hotels and Motels

Total number - 2
Total rooms - 14

Clubs and Organizations

American Legion	Eastern Star
American Legion Auxiliary	4-H Club
Bath County Farm Bureau	Future Farmers of America (FFA)
Bath County Fox Hunters Club	Future Homemakers of America (FHA)
Bath County Garden Club	Future Teachers of America (FTA)
Bath County Industrial Foundation	Girl Scouts
Bath County Sportsman Club	Homemakers
Boy Scouts	Lions Club
Brownies	Little League
CB Linear City	Masonic Lodge
Coon Hunters	Owingsville Chamber of Commerce
Cub Scouts	Veterans of Foreign Wars (VFW)
	Women's Club

RECREATION

Local

Public recreational facilities in Bath County include a park, two playgrounds, a swimming pool, a dance pavilion, three tennis courts, three baseball diamonds and a football field.

The Lions Club sponsors an annual Fourth of July horse show. The three night event, including art and craft displays, is held at the Lions Club Park, which has a horse show ring, barns, a building for club meetings and picnic facilities.

A popular tourist attraction, Owings Furnace (hence the name Owingsville), was a maker of Civil War cannon balls. A roadside park with picnic facilities is located on the grounds.

Many lectures, concerts and sporting events at Morehead State University, 20 miles distant, are open to the public.

Cave Run Lake, located 15 miles east of Owingsville, is an 8,270-acre lake extending into four adjoining counties. Facilities located at the lake are a marina, a boat ramp, boat rentals, fishing, a camping area and a restaurant.

Area (Within 50 miles)

Natural Bridge State Resort Park at Slade, 30 miles south of Owingsville, is a 1,899-acre park located in the Daniel Boone National Forest where cliffs and stone arches fill the landscape. The rugged awesomeness of the great Natural Bridge, the largest of 12 natural sandstone arches in the park, is the main attraction. The park has a 35-room resort lodge with a dining room and gift shop, efficiency and one-bedroom cottages, and 95 camping sites. Other facilities include a 54-acre lake, a swimming pool, picnic shelters and playgrounds, hiking trails, and a riding stable. A skylift going up to Natural Bridge is operated from April 15 to October 31 each year.

Red River Gorge is located near Slade, Kentucky, about 40 miles south of Owingsville in the Daniel Boone National Forest. The area includes 59 natural sandstone arches (12 in Natural Bridge State Resort Park) and 3 waterfalls in the gorge. The Red River Gorge Loop Drive is a 30-mile route on Kentucky 715 and 77 passing through an old railroad tunnel and along the Red River. The Daniel Boone National Forest Visitor Information Center is located on Kentucky 715 at Pine Ridge.

The spirit of Daniel Boone and his pioneers is reborn at Fort Boonesborough State Park in Boonesboro, 37 miles southwest of Owingsville. In the re-created fort 16 pioneer crafts of the eighteenth century are demonstrated by Kentuckians using functioning antiques from the frontier era. Cabins are furnished as they would have been in the days of Boone and documentary films are presented which depict the struggle of the first Kentuckians to make the Kentucky wilderness a home. A gift shop within the fort offers for sale all the handcrafted items made at the fort, along with a wide variety of handcrafts from throughout Kentucky. Other recreational facilities and activities of the park include the finest sand beach on the Kentucky River with a modern bathhouse, sun deck, and snack shop; a modern camping area with 187 sites; a central service building housing showers, restrooms, and laundry facilities for campers; a pavilion with a gift shop and grocery inside and a playground and basketball, volleyball, and shuffleboard courts on the grounds; and planned daily activities and special events under the guidance of a trained recreation director. Near the park is the dock of the Dixie Belle sternwheel excursion boat which operates one-hour trips daily on the Kentucky River leaving from the Fort Boonesborough boat dock.

Carter Caves State Resort Park, 40 miles northeast of Owingsville, provides a restful atmosphere with its mountain wildflowers, a rippling stream, the underground wonders of three caves, a lodge, a restaurant, and a gift shop. Recreational facilities available include something for the whole family with playgrounds, a swimming pool, tennis courts, shuffleboard, a 9-hole golf course, boating, fishing, horseback riding, picnicking, and cave tours.

Blue Licks Battlefield State Park is located near Mt. Olivet, 45 miles northwest of Owingsville. The 100-acre park is on the site of what is known as "The Last Battle of the Revolution" and the last major confrontation between the Indians and the pioneers. A museum features Indian and pioneer artifacts, an audio-visual program, and prehistoric bones from animals trapped at Blue Licks. Facilities include ten primitive campsites, a gift shop, picnic shelters and grills, a playground, a snack bar, and an Olympic-size swimming pool. Fishing is available at the Licking River which runs through the park.

The Kentucky Horse Park, a park dedicated to horses and to man's love for horses, is located 48 miles west of Owingsville in Lexington. The park, which contains more than 1,000 acres of Kentucky Bluegrass, features the International Museum of the Horse; the Man O'War Memorial; an antique carriage display; horseback and pony rides; walking farm tours; horse-drawn tours; planned recreation; a restaurant; a gift shop; and a campground area, which offers swimming, tennis, and planned activities. Numerous special events are held year-round and include various horse shows, steeplechasing, dressage, polo games, and three-day eventing.

Lexington is located 48 miles west of Owingsville. The University of Kentucky offers a variety of sporting events and educational activities which are open to the public. Thoroughbred and harness racing, tours of horse farms and tours of historic buildings are offered in the area.