

12-1999

Industrial Resources: Bourbon County - Paris

Kentucky Library Research Collections
Western Kentucky University, spcol@wku.edu

Follow this and additional works at: https://digitalcommons.wku.edu/bourbon_cty

 Part of the [Business Administration, Management, and Operations Commons](#), [Growth and Development Commons](#), and the [Infrastructure Commons](#)

Recommended Citation

Kentucky Library Research Collections, "Industrial Resources: Bourbon County - Paris" (1999). *Bourbon County*. Paper 2.
https://digitalcommons.wku.edu/bourbon_cty/2

This Report is brought to you for free and open access by TopSCHOLAR®. It has been accepted for inclusion in Bourbon County by an authorized administrator of TopSCHOLAR®. For more information, please contact topsolar@wku.edu.

IR
1100

Kentucky

Resources For Economic Development

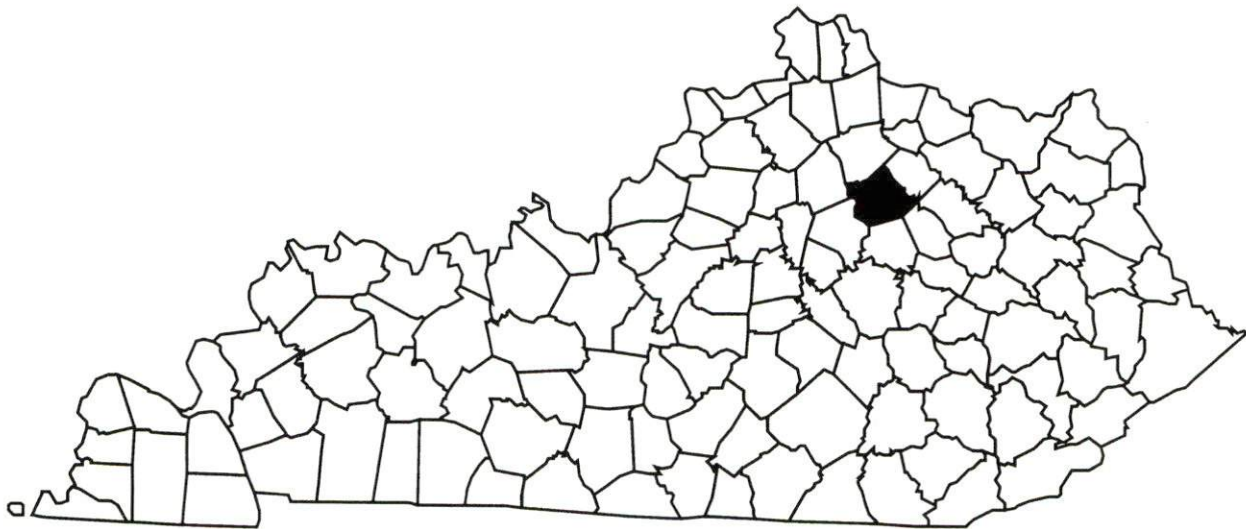
Albany
Barbourville
Ballard County
Bardstown • Booneville Berea
Bowling Green • Boyd & Greenup Counties
Bracken County • Brandenburg • Breckinridge
Brownsville • Bullitt County • Burkesville • Cadiz
Campbellsville • Campton • Carlisle • Carlisle County
Carrollton • Cave City • Clinton • Columbia • Corbin • Cynthiana
Danville • Dawson Springs • Edmonton • Elizabethtown • Estill County
Elliott County • Falmouth & Butler • Flemingsburg • Frankfort • Franklin
Frenchburg • Fulton County • Gallatin County • Georgetown • Grant County • Greensburg
Grayson & Olive Hill • Glasgow • Hancock County • Harlan County • Harrodsburg • Hart County
Hazard • Henderson • Henry County • Hodgenville • Hopkinsville-Christian County • Jackson County
Jackson • Knott County • LaGrange & Buckner • Lancaster • Lawrenceburg • Lebanon • Leitchfield-
Grayson County • Letcher County • Lexington • Liberty-Casey County • Logan County • Louisville
London • Louisa • Lyon County • Madisonville & Earlinton • Manchester • Marshall County • Mayfield
Maysville • McCreary County • Marion • McLean County • Middlesboro & Pineville • Monticello • Morehead
Morgantown • Mt. Sterling • Mt. Vernon • Muhlenberg County • Murray • Nicholasville • Northern Kentucky
Ohio County • Owensboro • Owenton • Owingsville • Paducah • Paintsville • Paris • Pike County • Powell
Prestonsburg • Princeton • Radcliff • Richmond • Russell County • Scottsville • Shelbyville • Somerset
Springfield • Stamping Ground • Stanford-Lincoln County • Tompkinsville & Gamaliel • Taylorsville
Todd County • Union County • Vanceburg • Versailles • Webster County • West Liberty • Williamsburg
Winchester, Kentucky

Kentucky

Resources For Economic Development

Paris (Bourbon County)

December 1999



Prepared by
Kentucky Cabinet for Economic Development
Division of Research
in cooperation with
Paris/Bourbon County Chamber of Commerce
525 High St., Suite 114
Paris, KY 40361
Phone: 606-987-3205 Fax: 606-987-4640
E-mail: chamber@kyk.net

Kentucky Cabinet for Economic Development
Division of Research
500 Mero Street
2300 Capital Plaza Tower
Frankfort, KY 40601
Telephone: (502) 564-4886
Fax: (502) 564-3256
Email: econdev@mail.state.ky.us

Cost of printing paid from state funds.

TABLE OF CONTENTS

	Page
PARIS, KENTUCKY – A RESOURCE PROFILE	1
LABOR MARKET STATISTICS	3
Population.....	3
Population Projections.....	3
Estimated Labor Supply.....	3
Labor Force Characteristics of Residents, 1998.....	4
Work Force Commuting Patterns (1990).....	4
Selected Components of Nonagricultural Employment by Place of Work, 1997.....	4
Per Capita Personal Income.....	6
Average Placement Wages.....	6
Average Weekly Wages by Industry by Place of Work, 1997.....	7
EXISTING INDUSTRY	8
Paris Manufacturing Firms, Their Products and Employment.....	8
Recent Industrial Developments.....	9
Major Paris Supportive/Service Employers.....	9
Labor Organizations in Bourbon County.....	9
Selected Industrial Services – Within 50 Miles of Paris.....	10
TRANSPORTATION	11
Highways.....	11
Truck Service.....	11
Rail.....	13
Air.....	13
UTILITIES	14
Electricity.....	14
Natural Gas.....	15
Public Water Supply.....	15
Sewerage.....	15
CLIMATE	16
LOCAL GOVERNMENT	17
Structure.....	17
Planning and Zoning.....	17
Local Fees and Licenses.....	17
Sales and Use Tax.....	17
State and Local Property Taxes.....	17
EDUCATION	19
Primary and Secondary Schools.....	19
Colleges and Technical Schools.....	19
OTHER LOCAL FACILITIES	23
RECREATION	24
APPENDIX - DEFINITIONS	25

PARIS, KENTUCKY – A RESOURCE PROFILE

Paris, the county seat of Bourbon County, is in central Kentucky's Bluegrass Region, an area famous for its many beautiful horse farms and gently-rolling topography. The city is 18 miles northeast of Lexington, Kentucky; 83 miles south of Cincinnati, Ohio; and 186 miles north of Knoxville, Tennessee. Paris had an estimated 1998 population of 8,898.

Bourbon County covers a land area of 291 square miles and had an estimated 1998 population of 19,368 persons.

The Economic Framework – Bourbon County firms employed 5,896 people in 1997. Contract construction firms provided 338 jobs; manufacturing firms in the county reported 1,300 employees; transportation and public utilities employed 162; wholesale and retail trade provided 1,392 jobs; finance, insurance, and real estate employed 199; 891 were employed in the service industry; and state and local government accounted for 929 jobs.

Labor Supply – There is a current estimated labor supply of 91,294 persons available for industrial jobs in the labor market area. In addition, from 1999 to 2003, approximately 24,498 young persons in the labor market area will become 18 years of age and potentially available for industrial jobs.

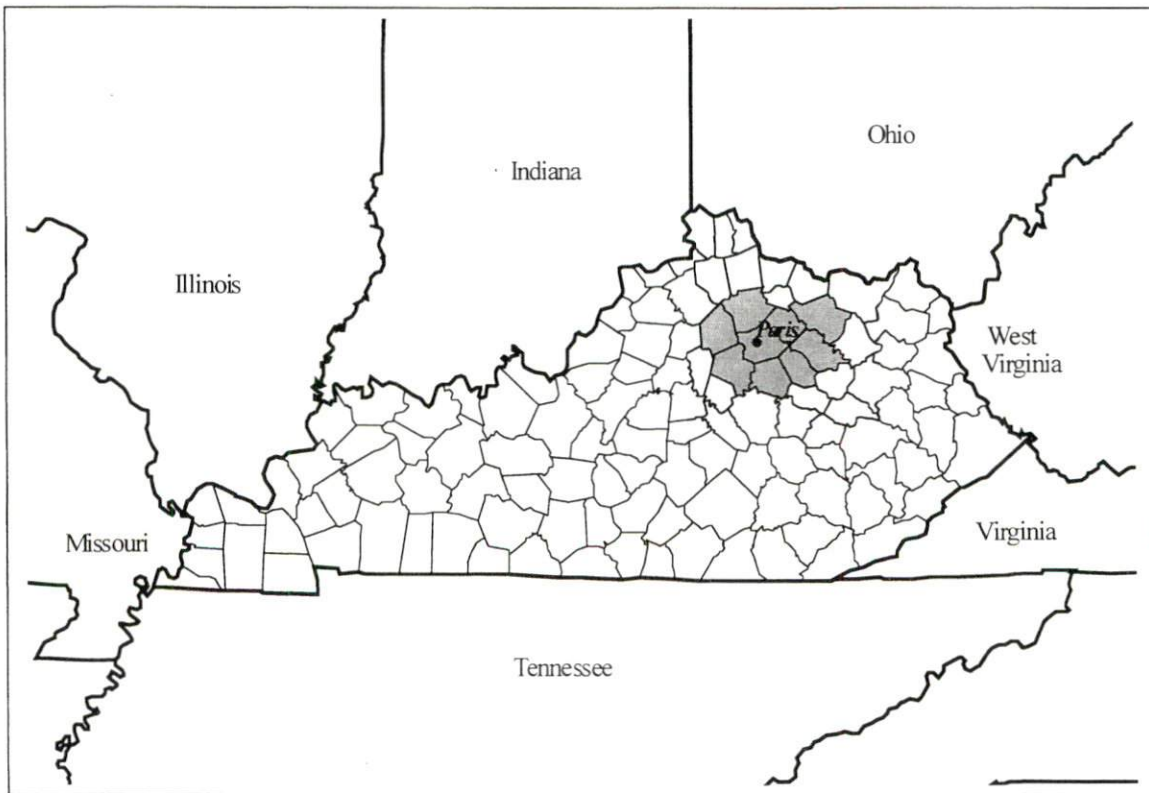
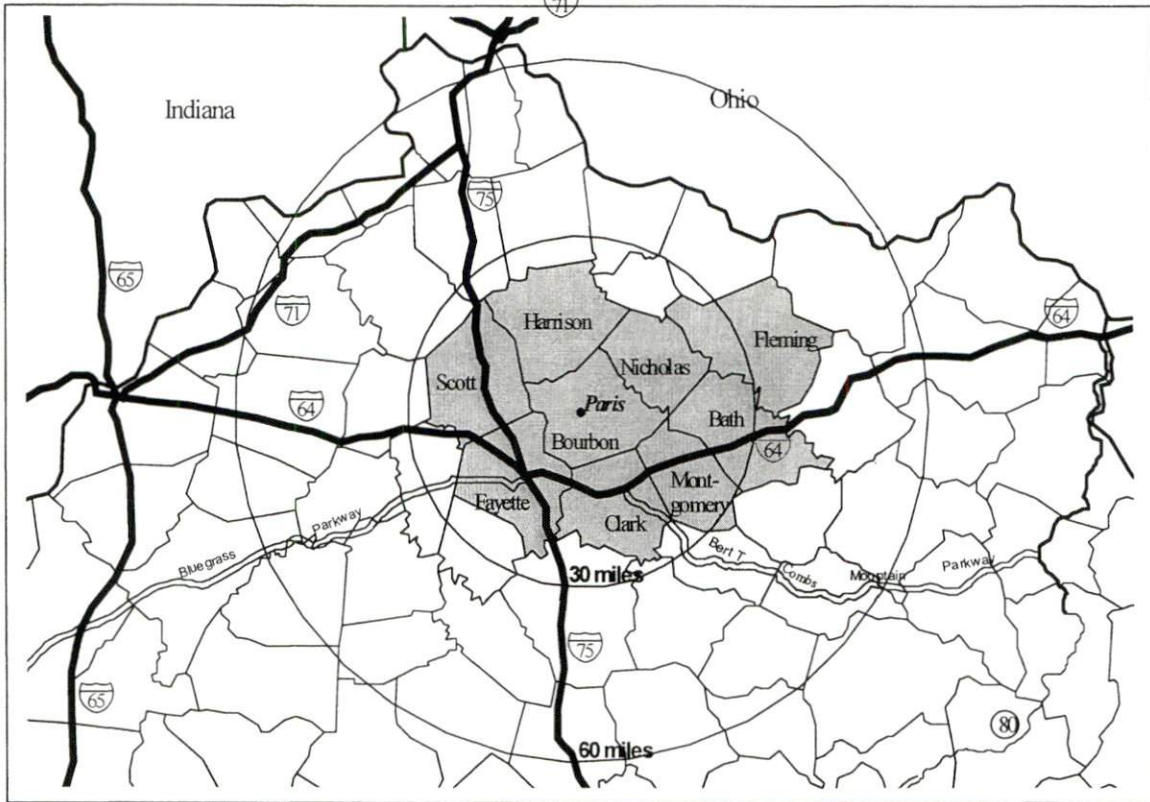
Transportation – Paris is served by U.S. Highways 27, 68, 460, and Kentucky Route 627, all of which are AAA-rated trucking highways. Twenty-nine trucking firms provide service to Paris. CSX Transportation and TransKentucky Transportation Railroad provide main line rail service. The Georgetown-Scott County Regional Airport, ten miles west of Paris, and the Cynthiana-Harrison County Airport, fourteen miles north, are the nearest small craft airports. The nearest scheduled commercial airline service is available at Blue Grass Airport near Lexington, Kentucky, 24 miles southwest of Paris.

Power and Fuel – Paris receives electric power from the City of Paris Combined Utilities Company and Kentucky Utilities (the two companies interchange electric power). Clark Energy Cooperative, Inc. and Harrison Rural Electric Cooperative Corporation provide electric power to Bourbon County. Natural gas service is provided to Paris by Columbia Gas of Kentucky.

Education – Primary and secondary education is provided by the Paris Independent School System and by the Bourbon County School System. Two non-public schools also operate in Bourbon County. There are fourteen institutions of higher learning within 60 miles of Paris.

The nearest area technology centers (ATC) providing secondary technical training are the Harrison County ATC in Cynthiana, 15 miles north of Paris, and the Clark County ATC in Winchester, 19 miles southeast of Paris. The nearest technical college providing postsecondary technical training is the Central Kentucky Technical College Lexington Campus, 18 miles southwest of Paris.

Labor Market Area Maps



Note: To obtain detailed topographical and general highway maps contact Maps and Publications at 502-564-4715, or for industrial site maps contact the Site Evaluation Division at 502-564-7140.

LABOR MARKET STATISTICS

The Paris labor market area includes Bourbon County and the following additional counties: Bath, Clark, Fayette, Fleming, Harrison, Montgomery, Nicholas, and Scott.

Population

	<u>1980</u>	<u>1990</u>	<u>1995*</u>	<u>1998*</u>
Labor Market Area	338,422	362,483	382,757	393,286
Paris	7,935	8,730	8,826	8,898
Bourbon County	19,405	19,236	19,241	19,368

Note: * Population estimates.

Source: U.S. Department of Commerce, Bureau of the Census.

Population Projections

	<u>2000</u>	<u>2010</u>	<u>2020</u>
Labor Market Area	397,301	416,111	426,928
Bourbon County	19,316	19,222	18,929

Note: Population projections are from High Growth Series forecast.

Source: University of Louisville, Urban Studies Center, State Data Center.

Estimated Labor Supply

	<u>Available Labor, 1998</u>			<u>Under-employed</u>	<u>Future Labor Becoming 18 years of age 1999 through 2003</u>
	<u>Total</u>	<u>Unemployed</u>	<u>Potential Labor Supply</u>		
Labor Market Area	91,294	5,630	5,520	80,145	24,498
Bourbon County	2,335	252	342	1,741	1,449

Note: Unemployed – people not working but actively seeking work. Potential Labor Supply – represents the number of persons not in the labor force, but would like a job (based on national estimates). Underemployed – people employed in wholesale/retail trade and non-professional services. See Appendix for further explanation.

Sources: U.S. Department of Labor, Bureau of Labor Statistics. U.S. Department of Commerce, Bureau of the Census. Kentucky Cabinet for Economic Development, Future Labor Supply Becoming 18 Years of Age, 1999 through 2003.

Labor Force Characteristics of Residents, 1998

	<u>Bourbon County</u>	<u>Labor Market Area</u>
Civilian Labor Force	10,016	219,029
Employed	9,764	213,399
Unemployed	252	5,630
Unemployment Rate (%)	2.5	3.2

Source: U.S. Department of Labor, Bureau of Labor Statistics.

Work Force Commuting Patterns (1990)

Workers commuting out of Bourbon County	3,704
Workers commuting into Bourbon County	1,983
Working and residing in Bourbon County	4,988

Source: University of Louisville, State Data Center.

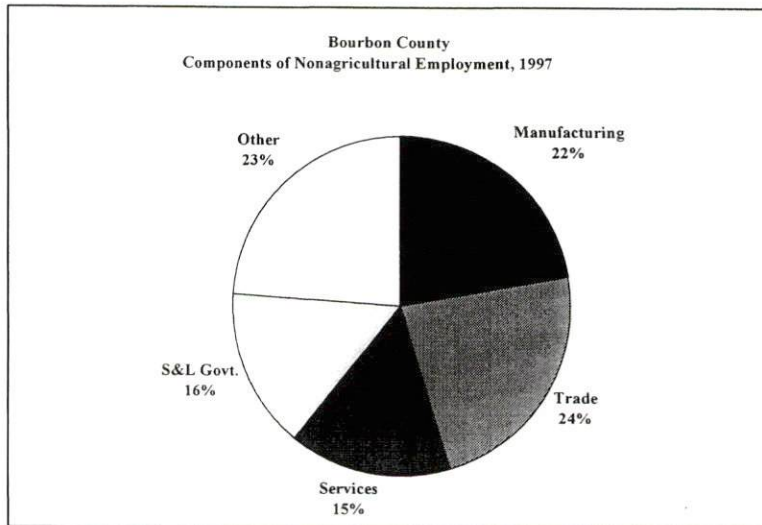
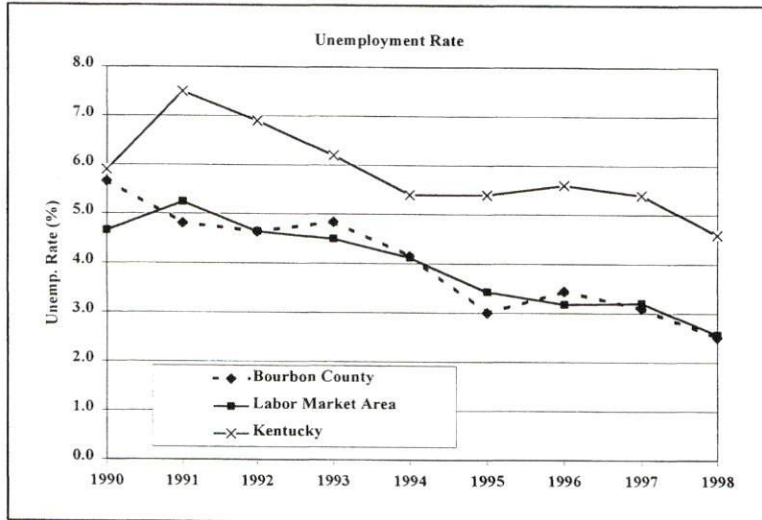
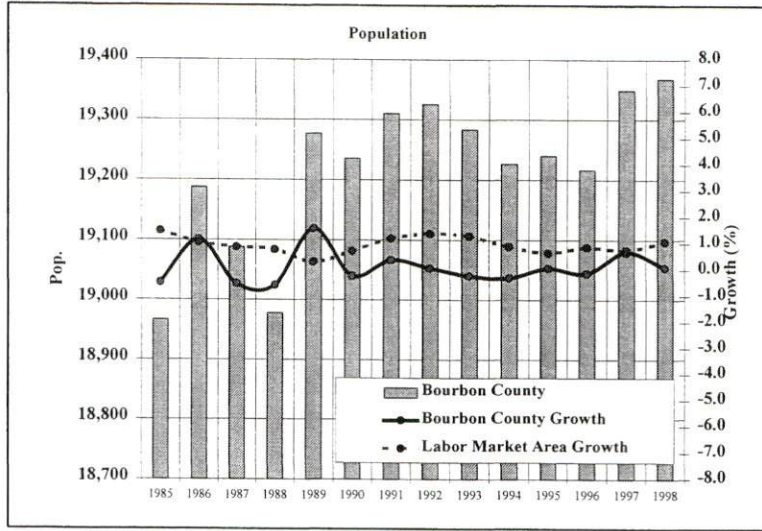
Selected Components of Nonagricultural Employment by Place of Work, 1997

	<u>Bourbon County</u>	<u>Labor Market Area</u>
All Industries	5,896	215,824
Mining & Quarrying	N/A	235
Contract Construction	338	10,802
Manufacturing	1,300	41,021
Transportation & Public Utilities	162	10,224
Wholesale & Retail Trade	1,392	53,398
Finance, Insurance, & Real Estate	199	9,065
Services	891	56,005
State & Local Government	929	30,912
Other	663	4,007

Note: Excludes domestic workers, railway workers, certain nonprofit corporations, majority of federal government workers, and self-employed workers. N/A – Data not available.

Source: Kentucky Workforce Development Cabinet, Average Monthly Workers Covered by Kentucky Unemployment Insurance Law, 1997.

Selected Charts



Per Capita Personal Income

	<u>1993</u>	<u>1997</u>	<u>Percent Change (1993-1997)</u>
Bourbon County	\$17,873	\$22,673	26.9
Labor Market Area Range	\$11,963 - \$22,931	\$14,876 - \$28,045	-
Kentucky	\$17,309	\$20,570	18.8
U. S.	\$21,368	\$25,288	18.3

Source: U.S. Department of Commerce, Bureau of Economic Analysis. 1998.

Average Placement Wages

Bourbon County is served by the Georgetown local office of the Kentucky Department for Employment Services. The focus of the following data is on job placements made by the Georgetown local office and may therefore be used as an indicator of the wages which employers in the area pay new employees. During the twelve months that ended on June 30, 1998, the local employment office filled Bourbon County job openings in various occupational categories. The average hourly wage for selected occupational categories were:

	<u>Number of Placements</u>	<u>Average Wage (\$)</u>
All Occupations	1,447	7.57
Professional, Technical & Managerial	10	10.01
Clerical	15	6.63
Sales	9	6.04
Domestic	1	2.00
Services (excluding domestic)	568	7.88
Agricultural, Fishery, Forestry, etc.	24	6.12
Processing	10	7.02
Machine Trades	120	8.19
Bench Work	359	8.65
Structural	238	4.65
Motor Freight & Transportation	9	7.79
Packaging & Materials Handling	81	8.80
Other	3	9.00

Note: Occupational categories are taken from the Dictionary of Occupational Titles published by the U.S. Department of Labor. The Georgetown local office serves Bourbon, Harrison, Nicholas, and Scott Counties.

Source: Kentucky Workforce Development Cabinet, Department for Employment Services.

Average Weekly Wages by Industry by Place of Work, 1997

	<u>Bourbon County</u>	<u>Kentucky (Statewide)</u>	<u>Tennessee</u>	<u>Virginia</u>
All Industries	\$441.89	\$488.00	\$521.00	\$555.00
Mining & Quarrying	N/A	790.00	839.00	772.00
Contract Construction	612.71	516.00	561.00	544.00
Manufacturing	586.68	644.00	621.00	644.00
Transportation & Public Utilities	665.38	648.00	653.00	761.00
Wholesale & Retail Trade	348.68	337.00	391.00	392.00
Finance, Insurance, & Real Estate	487.57	613.00	696.00	748.00
Services	319.76	440.00	495.00	580.00
State & Local Government	440.82	484.00	494.00	530.00
	<u>Indiana</u>	<u>Ohio</u>	<u>Illinois</u>	<u>U.S.</u>
All Industries	\$530.00	\$553.00	\$634.00	\$578.00
Mining & Quarrying	849.00	773.00	881.00	961.00
Contract Construction	604.00	619.00	765.00	610.00
Manufacturing	732.00	776.00	792.00	737.00
Transportation & Public Utilities	633.00	669.00	764.00	724.00
Wholesale & Retail Trade	351.00	384.00	452.00	411.00
Finance, Insurance, & Real Estate	624.00	682.00	938.00	863.00
Services	452.00	486.00	575.00	547.00
State & Local Government	510.00	567.00	615.00	576.00

Note: The average weekly wage for each category includes salaries and wages of all persons working for that type of business. For example, the manufacturing category includes both production workers and administrative personnel. Domestic workers, railway workers, certain nonprofit corporations, majority of federal government workers, and self-employed workers are excluded. Wages for U.S. and surrounding states rounded to nearest dollar. N/A – Data not available.

Sources: Kentucky Workforce Development Cabinet, Average Weekly Wages of Workers Covered by Kentucky Unemployment Insurance Law, 1997. U.S. Department of Labor, Bureau of Labor Statistics, Employment and Wages, Annual Averages, 1997, December 1998.

EXISTING INDUSTRY

Paris Manufacturing Firms, Their Products and Employment

<u>Firm</u>	<u>Product(s)</u>	<u>1999 Emp.</u>	<u>Date Established</u>
AdGraphics Printing	Offset & commercial printing, advertising specialties, computer typesetting, desktop publishing, staple binding	4	1994
Bluegrass Pharmaceuticals	Animal care products: salves & shampoos	10	1996
Bourbon County Packing Co.	Meat processing & packing	1	1992
Bourbon Graphics, Inc.	Comm. offset & letterpress printing & typesetting	3	1984
Bourbon Limestone Co.	Crushed & broken limestone	20	N/A
Bourbon Times	Newspaper publishing	8	1988
C.M.C./C.L.A.	Automotive & light truck wheels	360	1988
Citizen Advertiser, Inc.	Newspaper publishing & computer typesetting	9	1809
Davis Machine Shop	Machine shop: automotive parts rebuilding, drilling, boring, mill work & surface grinding	3	N/A
Easy Gardener	Fertilizer spikes	70	1972
Gresham, Mike Millwork	Custom & architectural millwork: stairways, household & office furniture	10	1994
Henson, W. M. Lightning Protection	Lightning cable & rod protection	1	1952
Hinkle Contracting Corp.	Asphaltic concrete, limestone & asphalt products	75	1942
Hunt, Harvey Servicenter	Machine shop: general machining, sheet metal fabricating, arc, gas, MIG & TIG welding	2	1966
I T W Ramset/Red Head	Power actuated fasteners, fastening systems, stud guns & expansion anchoring systems	75	1978
Irving Materials, Inc.	Ready-mixed concrete	10	1989
Kentucky Textiles, Inc.	Knit garments & swimwear	450	1948
Mallinckrodt Baker, Inc.	High purity chemicals	260	1978
Monessen Hearth Systems	Gas logs & fireplaces	100	N/A
Paris Machining Co., Inc.	Tractor trailer, truck axle & metal bars for printers	50	1971
Prime Finish	Customized finish for cell phones	24	1999
Quick Tek Mfg., Inc.	Machine shop: CNC machining, prototypes, lathe & millwork	14	N/A
Quillin Leather & Tack	Leather tack, halters, harnesses & saddlery; nameplate engraving	5	1979
Stephens Sign Shop	Painted & vinyl lettered signs	1	N/A
Thornberry, Jerry Welding, Inc.	Structural & ornamental steel fabricating; arc, gas, MIG, TIG & heliarc welding	3	N/A
T. S. Machining & Eng.	Mach. shop: gen. mach., surf. Grdng., mill & lathe	12	1988
W. B. Plastics Manufacturing	Custom injection, extruded & molded plastics & steel fabricating	5	N/A

Note: N/A - Data not available.

Sources: Kentucky Directory of Manufacturers published by Harris InfoSource in cooperation with the Kentucky Cabinet for Economic Development, Division of Research; Paris/Bourbon County Chamber of Commerce.

Recent Industrial Developments

Infrastructure development has been completed at the 80-acre Paris/Bourbon County Industrial Park. The park, a joint venture of the Paris and Bourbon County governments, houses three industries.

Major Paris Supportive/Service Employers

<u>Firm/Organization</u>	<u>Employment</u>
Bourbon Community Hospital	200
Bourbon County Schools	413
Claiborne Farm	133
Ken's New Market	125
Paris City Schools	160
Wal-Mart	112

Source: Paris/Bourbon County Chamber of Commerce.

Labor Organizations in Bourbon County

There are presently no labor organizations representing manufacturing workers in Paris.

Source: Kentucky Cabinet for Economic Development, Division of Research.

Selected Industrial Services – Within 50 Miles of Paris

Miles	City	Custom Plastics Producers	Electric Motor Repair	Heat Treating Facilities	Industrial Waste Removal	Machine Shops, Tool & Die	Metal Castings	Metal Finishers	Metal Service Centers	Mill- wrights & Riggers
-	Paris					X				
13	Cynthiana					X	X			
15	Winchester		X			X			X	
16	Georgetown	X		X		X				
16	Lexington	X	X		X	X		X		X
20	Mount Sterling					X		X		
23	Berry					X				
24	Stamping Ground					X				
28	Versailles					X				
29	Nicholasville	X			X	X				
30	Clay City					X				
32	Means					X				
32	Richmond	X		X		X		X		
33	Frankfort	X			X					
33	Stanton					X				
33	Waco				X					
34	Williamstown	X								
37	Lawrenceburg					X				
39	Maysville		X			X				
43	Berea				X	X				
44	Harrodsburg					X				
45	Morehead		X		X	X				
48	Danville	X	X		X	X				
49	Walton				X					

Note: Miles are calculated as the straight-line distance from city center to city center; not road miles.

Source: Kentucky Cabinet for Economic Development, Division of Research.

TRANSPORTATION

Highways

Paris is served by U.S. Highways 27, 68, 460, and Kentucky Route 627. All are AAA-rated (80,000-pound gross load limit) trucking highways. Kentucky Route 1940 a AA-rated (62,000-pound gross load limit) trucking highway also provides service to Paris. Interstate 75 can be accessed near Georgetown, sixteen miles west of Paris. Interstate 64 can be accessed near Lexington, fifteen miles southwest of Paris.

Highway Miles from Paris, Kentucky to Selected Market Centers

<u>City</u>	<u>Highway Miles</u>	<u>City</u>	<u>Highway Miles</u>
Atlanta, GA	395	Kansas City, MO	598
Baltimore, MD	525	Knoxville, TN	186
Birmingham, AL	422	Los Angeles, CA	2,175
Charleston, WV	162	Louisville, KY	88
Chicago, IL	372	Minneapolis, MN	784
Cincinnati, OH	83	Nashville, TN	231
Cleveland, OH	335	New Orleans, LA	763
Columbia, SC	446	New York, NY	692
Columbus, OH	191	Pittsburgh, PA	372
Dallas, TX	893	Raleigh, NC	479
Des Moines, IA	668	Richmond, VA	479
Detroit, MI	347	St. Louis, MO	348
Indianapolis, IN	191	Tallahassee, FL	666

Note: Mileage computations are via the best interstate or primary highways, not necessarily the most direct route of travel.

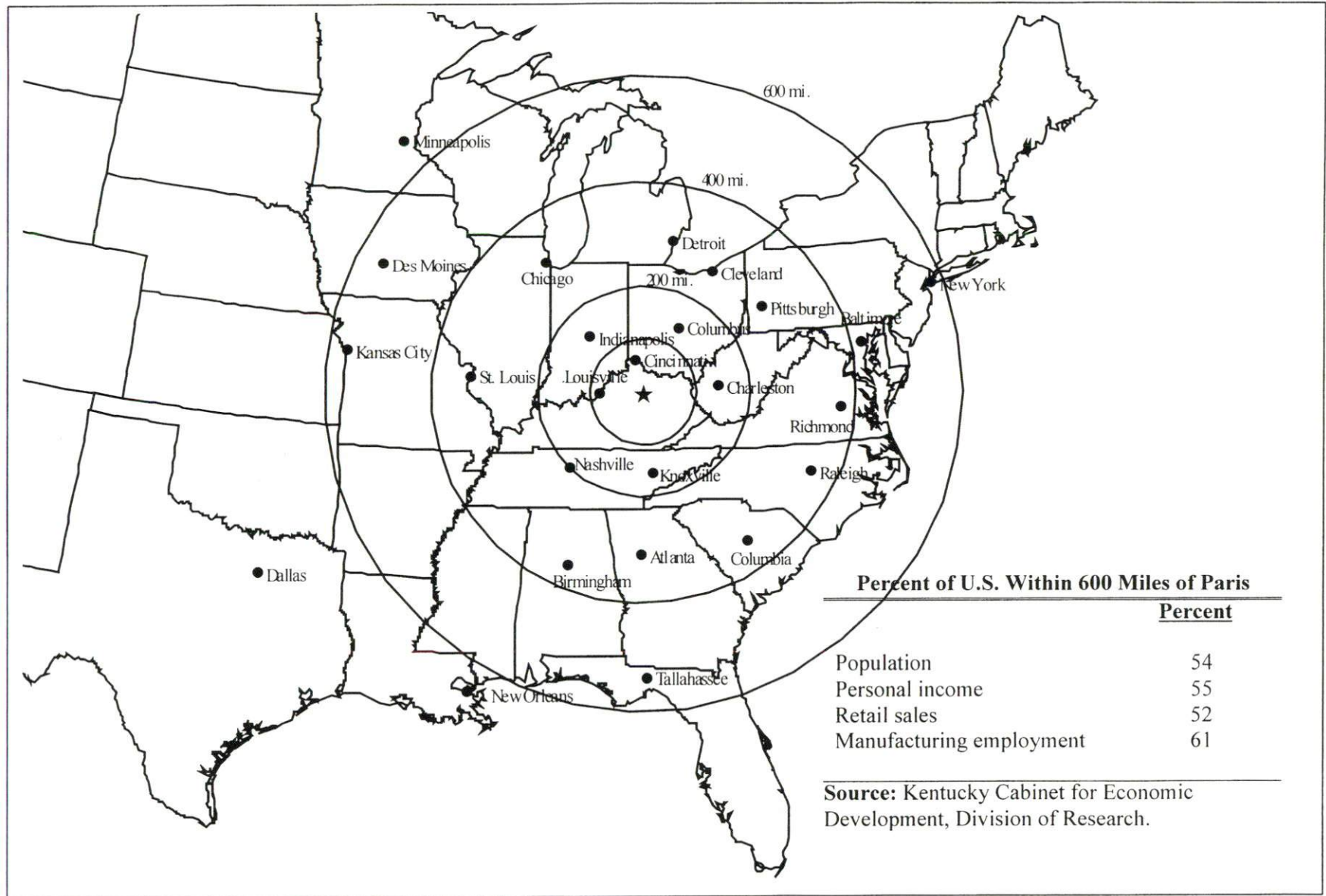
Source: AAA Map 'n' Go, DeLORME, 1998.

Truck Service

Twenty-nine common carrier trucking companies provide interstate and/or intrastate service to Paris. Roeder Cartage maintains a terminal and warehousing facility in Paris. The company specializes in hazardous waste hauling.

Source: American Motor Carrier Directory, Spring 1999.

Selected Market Centers Map



Rail

Main line rail service is provided to Paris by CSX Transportation and by TransKentucky Transportation Railroad, a connecting line extending from Paris to Maysville. The nearest intermodal facility is located at Georgetown, 18 miles west of Paris, and is operated by the Norfolk Southern Corporation.

For details on routing, schedules, rates, and services contact:

Manager
Industrial Development
CSX Transportation
9420 Bunsen Parkway
Suite 212
Louisville, Kentucky 40220
(502) 499-3025

and/or

President
TransKentucky Transportation Railroad (TTI)
105 Winchester Street
Paris, Kentucky 40631
(606) 987-1589

Air

Local

Georgetown-Scott Co. Regional Airport (Marshall Field)
Location: Georgetown, KY
Runway length: 4,000 feet (asphalt)
Phone: (502) 863-6320

Cynthiana-Harrison County Airport
Location: Cynthiana, KY
Runway length: 4,000 feet (paved)
Phone: (606) 234-8477

Commercial

Blue Grass Airport
Location: Lexington, Kentucky
24 miles southwest of Paris
Air service: ASA, Allegheny, CC Air, Comair, Continental Express, Delta, Northwest Airlink, Northwest Mesaba, TW Express, United Express, US Airways
Daily arrivals & departures: 300

UTILITIES

Electricity

Service area: **portions of Paris and Bourbon County**
Company: Kentucky Utilities Company
Source of power: Kentucky Utilities Company
For industrial rates contact:

Economic Development Department
Kentucky Utilities Company
One Quality Street
Lexington, KY 40507
(606) 255-2100

Service area: **portions of Bourbon County**
Company: Clark Energy Cooperative, Inc.
Source of power: East Kentucky Power Cooperative
For industrial rates contact:

Industrial Development Department
East Kentucky Power Cooperative
P.O. Box 707
Winchester, KY 40391
(606) 744-4812

and/or

Clark Energy Cooperative, Inc.
2640 Ironworks Road, P. O. Box 748
Winchester, KY 40392-0748
(606) 744-4251

Service area: **portions of Bourbon County**
Company: Harrison Rural Electric Cooperative Corporation
Source of power: East Kentucky Power Cooperative
For industrial rates contact:

Industrial Development Department
East Kentucky Power Cooperative
P.O. Box 707
Winchester, KY 40391
(606) 744-4812

and/or

Harrison Rural Electric Cooperative Corporation
Oddville Ave., P. O. Box 130
Cynthiana, KY 41031
(606) 234-3131

Natural Gas

Service area: **Paris**
Company: Columbia Gas of Kentucky
Source of supply: Columbia Gas Transmission Corporation
For rates and supplies contact:

Columbia Gas of Kentucky
2001 Mercer Rd., P. O. Box 14241
Lexington, KY 40512-4241
Frankfort, KY 40601
(606) 288-0227

Public Water Supply

Service area: **Paris**
Company: City of Paris Combined Utilities
525 High St.
Paris, KY 40361
(606) 987-2110

Treatment facilities information:
Source of raw water: Stoner Creek
Treatment plant capacity: 3,000,000 gallons per day
Average daily consumption: 1,400,000 gallons
Peak daily consumption: 2,000,000 gallons
Storage capacity: 3,000,000 gallons
Water pressure: 40 psi to 100 psi

Sewerage

Service area: **Paris**
Company: City of Paris Combined Utilities
525 High St.
Paris, KY 40361
(606) 987-2110

Design capacity: 2,200,000 gallons per day
Average daily flow: 1,700,000 gallons
Type of treatment: Secondary
Treated effluent discharged into: Stoner Creek

CLIMATE

Bourbon County

Temperature

Normal (115-year record)	55.10 degrees
Average annual, 1998	57.60 degrees
Record highest, July 1988 (54-year record)	103.00 degrees
Record lowest, January 1963 (54-year record)	-21.00 degrees
Normal heating degree days (30-year record)	4,783
Normal cooling degree days (30-year record)	1,140

Precipitation

Normal (30-year record)	44.55 inches
Mean annual snowfall 30-year record)	17.50 inches
Total precipitation, 1998	49.6 inches
Mean number days precipitation (0.01 inch or more) (30-year record)	129.10
Mean number days thunderstorms (54-year record)	43.80

Prevailing Winds (27-year record)

South

Relative Humidity (30-year record)

1 a.m.	77 percent
7 a.m.	82 percent
1 p.m.	60 percent
7 p.m.	64 percent

Notes: Heating degree day totals are the sums of negative departures of average daily temperatures from 65 degrees F. Cooling degree day totals are the sums of positive departures of average daily temperatures from 65 degrees F.

Source: U.S. Department of Commerce, National Climatic Data Center, Local Climatological Data, 1998.
Station of record: Lexington, Kentucky.

LOCAL GOVERNMENT

Structure

The City of Paris is served by a mayor, four commissioners, and a city manager. Bourbon County is served by a county judge/executive and seven magistrates.

Planning and Zoning

Joint agency – Paris/Bourbon County Joint Planning Commission

Participating cities - Paris, North Middletown, Millersburg, and Little Rock

Zoning enforced – Within corporate limits of Paris

Subdivision regulations enforced – Within corporate limits of Paris

Local codes enforced - Building and housing within corporate limits of Paris

Mandatory state codes enforced - Kentucky Plumbing Code, National Electric Code, Kentucky Boiler Regulations and Standards, Kentucky Building Code (modeled after BOCA code)

Local Fees and Licenses

The City of Paris levies an occupational license tax of one and one-half percent on gross salaries, wages, commissions, and other compensation earned by individuals for work done or services performed in the city and on net profits of all businesses. Annual business license fees ranging from \$25 to \$500 are assessed on businesses in Paris.

Bourbon County levies an occupational license tax of 0.75 percent on gross salaries, wages, commissions, and other compensation earned by individuals and on net profits of businesses.

Sales and Use Tax

A state sales and use tax is levied at the rate of 6.0% on the purchase or lease price of taxable goods and on utility services. Local sales taxes are not levied in Kentucky.

State and Local Property Taxes

The Kentucky Constitution requires the state to tax all classes of taxable property, and state statutes allow local jurisdictions to tax only a few classes. All locally taxed property is subject to county taxes and school district taxes (either a county school district or an independent school district). Property located inside the city limits may also be subject to city property taxes. Property assessments in Kentucky are at 100% fair cash value. Accounts receivable are taxed at 85% of face value. Special local taxing jurisdictions (fire protection districts, watershed districts, and sanitation districts) levy taxes within their operating areas (usually a small portion of community or county).

State Property Tax Rates Per \$100 Valuation

<u>Selected Classes of Property</u>	<u>State Rate, 1998</u>	<u>Local Taxation Permitted</u>
Real Estate	\$0.153	Yes
Manufacturing Machinery	0.150	No
Pollution Control Equipment	0.150	No
Inventories:		
Raw Materials	0.050	No
Goods in Process	0.050	No
Finished Goods	0.050	Yes
Motor Vehicles	0.450	Yes
Other Tangible Personal Property	0.450	Yes
Intangibles (Accounts Receivable, Money on Hand)	0.250	No

Source: Property Tax Rates 1998, Kentucky Revenue Cabinet, Department of Property Valuation.

Local Property Tax Rates Per \$100 Valuation, 1998

<u>Taxing Jurisdiction</u>	<u>Real Estate</u>	<u>Finished Goods & Tangibles</u>	<u>Motor Vehicles</u>
<u>County</u>			
Bourbon County	0.1974	0.1996	0.2310
<u>City</u>			
Paris	0.1300	0.1300	0.1700
<u>School Districts</u>			
Bourbon County	0.4330	0.4330	0.5470
Paris Independent School District	0.5470	0.5470	0.5530

Source: Property Tax Rates 1998, Kentucky Revenue Cabinet, Department of Property Valuation.

EDUCATION

Primary and Secondary Schools

Public School District Enrollments and Expenditures, 1996-1997

	<u>Total Enrollment</u>	<u>Expenditures Per Pupil</u>	<u>Pupil to Teacher Ratio</u>
Bourbon County	2,754	\$6,028	16.5 to 1
Paris Independent	839	\$7,008	15.3 to 1

Source: Kentucky Department of Education, Office of Curriculum, Assessment, and Accountability.

Transition to Adult Life of High School Graduates, 1996-1997

<u>County-wide</u>	<u>Number of Graduates</u>	<u>Percent of Total Graduates (%)</u>
Total High School Graduates	194	
To College	84	43.3
To Vocational/Technical School	6	3.1
To Workforce	74	38.1
To Work & School	7	3.6
To Military	9	4.6
Other	14	7.2

Source: Kentucky Department of Education, Office of Curriculum, Assessment, and Accountability.

Nonpublic Schools

	<u>Enrollment</u>	<u>Grades</u>
Millersburg Military Academy	60	6-12
St. Mary Elementary	70	1-6

Source: Kentucky Schools Directory 1997-98, Kentucky Department of Education.

Colleges and Technical Schools

Area Colleges and Universities Within 60 Miles of Paris

<u>Miles</u>	<u>Institution</u>	<u>Location</u>	<u>Enrollment (Fall 1997)</u>
16	Georgetown College	Georgetown	1,626
16	Lexington Community College	Lexington	5,558
16	Transylvania University	Lexington	1,021
16	University of Kentucky	Lexington	24,171
23	Midway College	Midway	968

<u>Miles</u>	<u>Institution</u>	<u>Location</u>	<u>Enrollment (Fall 1997)</u>
32	Eastern Kentucky University	Richmond	15,425
32	Asbury College	Wilmore	1,258
33	Kentucky State University	Frankfort	2,288
39	Maysville Community College	Maysville	1,294
43	Berea College	Berea	1,464
45	Morehead State University	Morehead	8,208
48	Centre College	Danville	1,001
58	Northern Kentucky University	Highland Heights	11,785
59	Thomas More College	Crestview Hills	1,322
Total Enrollment			77,389

Note: Miles are calculated as the straight-line distance from Paris, not road miles.

Source: Kentucky Council on Higher Education.

Technical Schools

<u>Miles</u>	<u>Institution</u>	<u>Location</u>	<u>Enrollment (1997-1998)</u>		
			<u>Sec</u>	<u>P/S</u>	<u>Total</u>
13	Harrison County ATC	Cynthiana	720	5	725
15	Clark County ATC	Winchester	207	2	209
16	Central KY Technical College Lexington Campus	Lexington	0	1,154	1,154
16	Eastside Center for Applied Technology	Lexington	345	0	345
16	Southside Center for Applied Technology	Lexington	261	0	261
20	Montgomery County ATC	Mt. Sterling	692	0	692
32	Madison County ATC	Richmond	799	0	799
33	Franklin County Area Vocational Education Center	Frankfort	178	0	178
37	Central KY Technical College Anderson Campus	Lawrenceburg	0	115	115
39	Mason County ATC	Maysville	185	33	218
44	Harrodsburg ATC	Harrodsburg	383	4	387
44	Garrard County ATC	Lancaster	199	0	199
45	Rowan County Technical College	Morehead	99	417	516
48	Central KY Technical College Danville Campus	Danville	107	125	232
52	C. E. McCormick ATC	Alexandria	241	1	242
53	Lee County ATC	Beattyville	429	21	450
53	Shelby County ATC	Shelbyville	539	46	585
58	Northern KY Technical College Edgewood Campus	Edgewood	0	248	248
58	Northern KY Technical College Highland Heights Campus	Highland Heights	30	212	242
58	Rockcastle County ATC	Mount Vernon	367	73	440

<u>Miles</u>	<u>Institution</u>	<u>Location</u>	<u>Enrollment (1997-1998)</u>		
			<u>Sec</u>	<u>P/S</u>	<u>Total</u>
58	Foster Mead Vocational Education Center	Vanceburg	215	0	215
58	Morgan County ATC	West Liberty	221	0	221
59	Carroll County ATC	Carrollton	429	21	450
59	Chapman Academic Vocational Education Center	Covington	147	0	147
59	Northern KY Technical College Covington Campus	Covington	7	473	480
60	J. D. Patton ATC	Fort Mitchell	185	0	185
60	Carter County Vocational School	Olive Hill	170	0	170
Total Enrollment			7,155	2,950	10,105

Notes: Kentucky Tech secondary schools (Sec), called area technology centers (ATC), are operated by the Cabinet for Workforce Development and the post-secondary schools (P/S), called technical colleges, are governed by the Kentucky Community and Technical College System (KCTCS). Adult courses may be offered at some secondary technical schools. Miles are calculated as the straight-line distance from Paris, not road miles.

Source: Kentucky Workforce Development Cabinet, KCTCS.

Customized Training

The Kentucky Tech system, through its training and development coordinators, will provide technical assistance and will identify and develop low-cost customized training programs and services for both established and prospective businesses. Businesses wanting to establish a customized training program should contact a Training and Development Coordinator at the Central Kentucky Technical College Lexington Campus.

Assessment Services

Kentucky Tech Career Connections offers business, education, and government agencies testing packages for evaluating job applicants, selecting employees for promotional consideration and developing training programs within the organization. The Career Connections Assessment Center serving the Paris area is located at the Central Kentucky Technical College Lexington Campus.

Adult Education Services

Adult education programs are available to adults who want to develop new academic skills, improve basic skills, or earn a high school equivalency diploma. In the Paris area, adult basic education and adult literacy classes are administered through the Bourbon County Board of Education.

Bluegrass State Skills Corporation

The Bluegrass State Skills Corporation (BSSC) was established in 1984 by the General Assembly of the Commonwealth of Kentucky as an independent, de jure corporation to stimulate economic development through customized business and industry specific skills training programs. The BSSC works with business and industry and Kentucky's educational institutions to establish programs of skills training. The BSSC is attached to the Cabinet for Economic Development for administrative purposes, in recognition of the relationship between economic development and skills training efforts.

The BSSC is comprised of two economic development tools, matching grants and the newly authorized Skills Training Investment Credit Act. The BSSC grant program is available to new, expanding and existing business and industry. Eligible training activities include pre-employment skills training and assessment; entry level, skills upgrade and occupational upgrade training; train-the-trainer travel; and capacity-building. The Skills Training Investment Credit Act provides tax credits to existing businesses for skills upgrade training.

OTHER LOCAL FACILITIES

Local Medical Personnel

Physicians - 26

Dentists - 11

Hospitals

<u>General Hospital</u>	<u>Location</u>	<u>Beds</u>
Bourbon Community Hospital	Paris	58

Medical staff - 26 active staff physicians, 25 courtesy staff physicians, 56 registered nurses, 2 licensed practical nurses

Other Medical Facilities and Services

Bluegrass Medical Clinic

Bourbon County Comprehensive Care Center

Bourbon County Health Department

Bourbon County Heights (nursing home)

Nurses Home Health Registry

Paris-Bourbon County Emergency Medical Service

Stoner Creek Centre

Banks and Savings & Loan Associations

Blue Grass Federal Savings and Loan Association

Fifth Third Bank

Kentucky Bank

Newspapers

The Bourbon County Citizen (weekly)

The Bourbon Times (weekly)

The Citizen Advertiser (weekly)

Telephone Service

BellSouth

RECREATION

A number of public recreational facilities are available in Paris. Bourbon Park, a 30-acre county park, contains lighted softball/baseball fields, a playground, track, tennis court, fairground facilities, pavilion, basketball/volleyball courts (one court can be flooded during winter months for ice skating), exercise stations, picnic areas, and horseshoe pits.

Garrard Park, operated by the city, features nine tennis courts, a lighted softball/baseball field, and a picnic pavilion. The city plans to add a basketball court in the near future. There are three additional limited facility parks located throughout the county and two soccer fields. Paris also sponsors Little League and Babe Ruth baseball programs.

Private recreational facilities include a country club, with a nine-hole golf course and swimming pool; a commercial nine-hole golf course; and a YMCA with an Olympic-size swimming pool and fitness center. Paris residents also benefit from a local bowling alley and drive-in theater. Houston Oaks Golf Course is a 18-hole championship course.

The Hopewell Museum is a combined local history and fine arts museum. The fine arts collection features paintings, pottery, porcelain, glass, and work on paper. The museum features continually changing exhibits on the history of Paris and Bourbon County and offers classes and programs for children and adults.

Area (within 65 miles)

Blue Licks Battlefield State Park
Daniel Boone National Forest
Fort Boonesborough State Park
Keeneland Race Course
Kentucky Horse Park
Kentucky State Capital
Kincaid Lake State Park
Red Mile Harness Track
Waveland State Historic Site
White Hall State Historic Site

APPENDIX - DEFINITIONS

Geographic definition of the labor market area

A county's labor market area is defined as the base county, adjacent counties, and any other major commuting counties. Adjacency is used to define the labor market area primarily because of the small size of Kentucky's counties. The major commuting counties are defined from the point of view of the base county. Major commuting counties are those counties that comprise 90% of the base county's total commuters. The source of the commuting patterns is the 1990 journey-to-work data available from the U.S. Department of Commerce, Bureau of Economic Analysis.

Example – Logan County

To determine the labor market area for Logan County the following steps are taken. First, the counties with workers commuting into Logan county are listed in ascending order (see the table below). The cumulative percent is calculated. Next, all counties that comprise up to 90% of the commuters are included in the labor market area (actually the cut-off will be the county that breaks the 90% threshold – Montgomery County, TN at 92.6% in this case). Although Robertson is not a major commuter county, it is included since it is adjacent. The Logan County labor market is then comprised of the seven bold-faced counties in the table below.

Labor Market Area Example – Logan County				
<u>Adjacent to Logan</u>	<u>Commuter County</u>	<u>Commuters into Logan</u>	<u>Percent of Total Commuters</u>	<u>Cumulative Percent</u>
Y	Todd	385	24.4%	24.4%
Y	Warren	377	23.9	48.4
Y	Muhlenberg	365	23.2	71.5
Y	Simpson	162	10.3	81.8
Y	Butler	116	7.4	89.1
	Montgomery, TN	55	3.5	92.6
	Christian	36	2.3	94.9
	Sumner, TN	35	2.2	97.1
Y	Robertson, TN	25	1.6	98.7
	Davidson, TN	20	1.3	100.0
	<i>Total Commuters into Logan County</i>		<i>1,576</i>	<i>100.0</i>

Source: U.S. Department of Commerce, Bureau of Economic Analysis. Regional Economic Information System, CD-ROM. August 1997.

Potential Labor Supply

The potential labor supply is an estimate of those persons not classified as in the labor force (not employed and not unemployed), but who want a job. The assumption is that people not in the labor force at the local level would like a job at the same rate as the nation. The U.S. Department of Labor, Bureau of Labor Statistics provides national, yearly estimates of the percent of the people not in the labor force who want a job. This percent is applied to the county-level number of people not in the labor force.

Underemployed

Wholesale/retail trade and non-professional services have historically paid low wages. The assumption is that workers in these industries would take higher paying jobs if they were available. Non-professional services excludes Miscellaneous Repair Services (SIC 7600), Health Services (SIC 8000), Legal Services (SIC 8100), and Engineering and Management Services (SIC 8700).

Total Available Labor

Total available labor is the sum of the number of unemployed, potential labor supply, and underemployed. Please note that the number of unemployed is the only generally accepted measure of labor availability. The other concepts are weaker measures and should be used with caution.