

1983

Industrial Resources: Butler County - Morgantown

Kentucky Library Research Collections
Western Kentucky University, spcol@wku.edu

Follow this and additional works at: https://digitalcommons.wku.edu/butler_cty

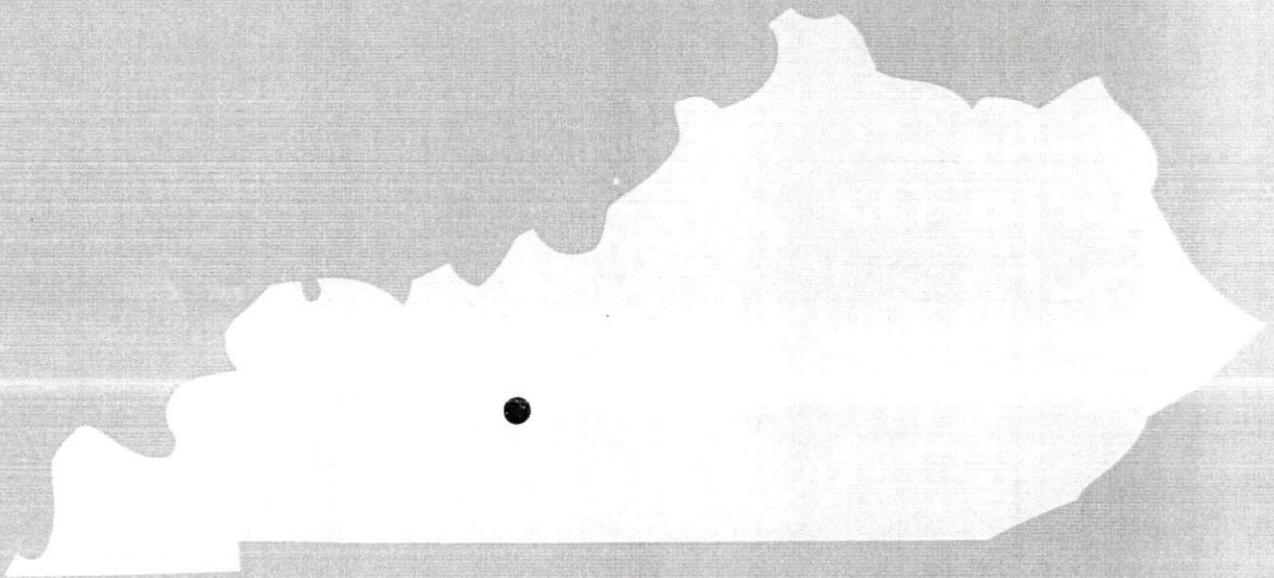
 Part of the [Business Administration, Management, and Operations Commons](#), [Growth and Development Commons](#), and the [Infrastructure Commons](#)

Recommended Citation

Kentucky Library Research Collections, "Industrial Resources: Butler County - Morgantown" (1983). *Butler County*. Paper 15.
https://digitalcommons.wku.edu/butler_cty/15

This Report is brought to you for free and open access by TopSCHOLAR®. It has been accepted for inclusion in Butler County by an authorized administrator of TopSCHOLAR®. For more information, please contact topscholar@wku.edu.

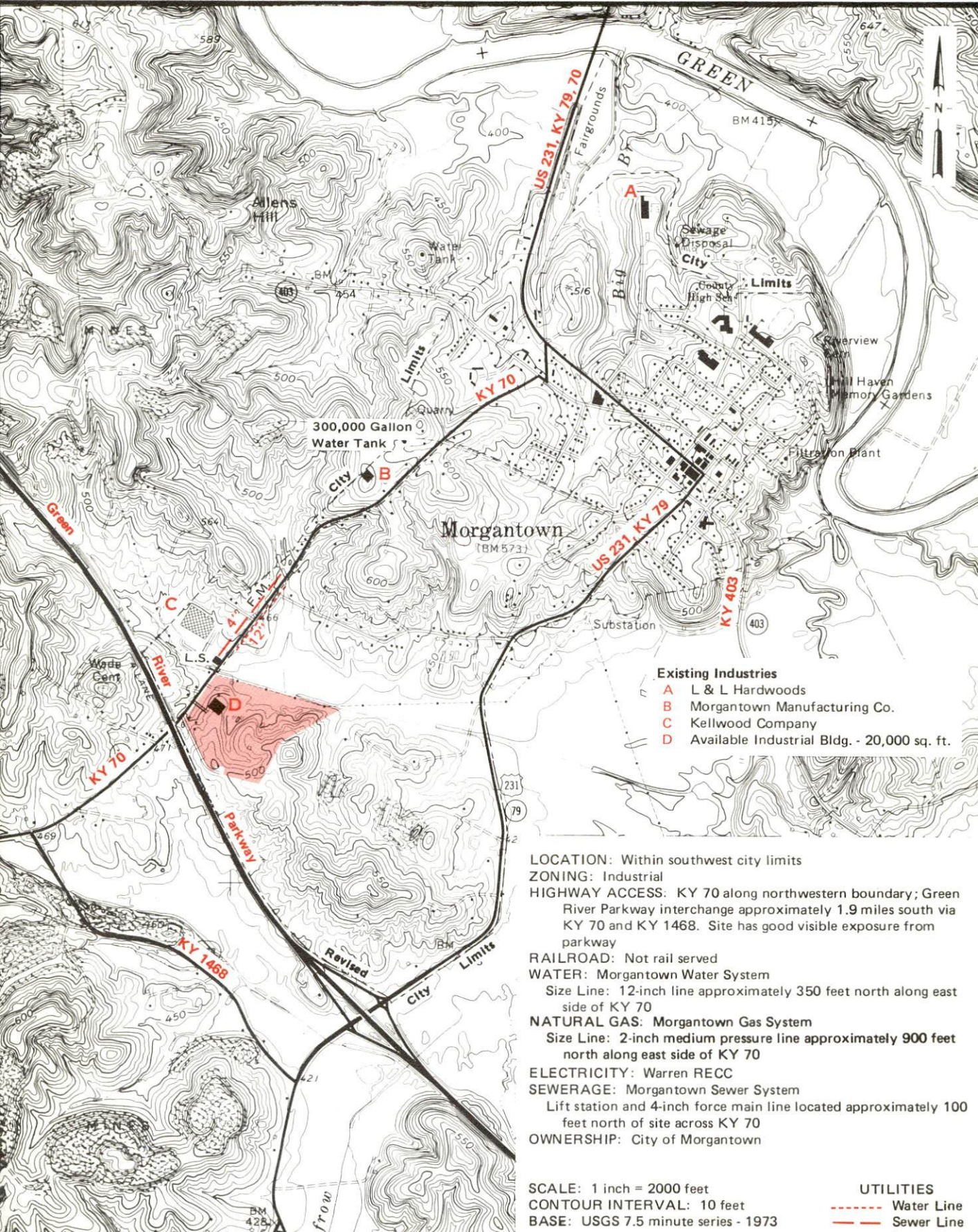
A comprehensive
report on
Morgantown, Ky.
1983



KENTUCKY & CO.
The state that's run like a business.

MORGANTOWN, KENTUCKY --- Site 183 --- 44 Acres

For more information contact the Department of Economic Development, Office of Business Development, Industrial Development Division, Capital Plaza Tower, Frankfort, Kentucky 40601 (502-564-7140).



A COMPREHENSIVE REPORT ON
MORGANTOWN, KENTUCKY

Prepared by
Kentucky Department of Economic Development
Division of Research and Planning
in cooperation with
The Morgantown/Butler County Chamber of Commerce

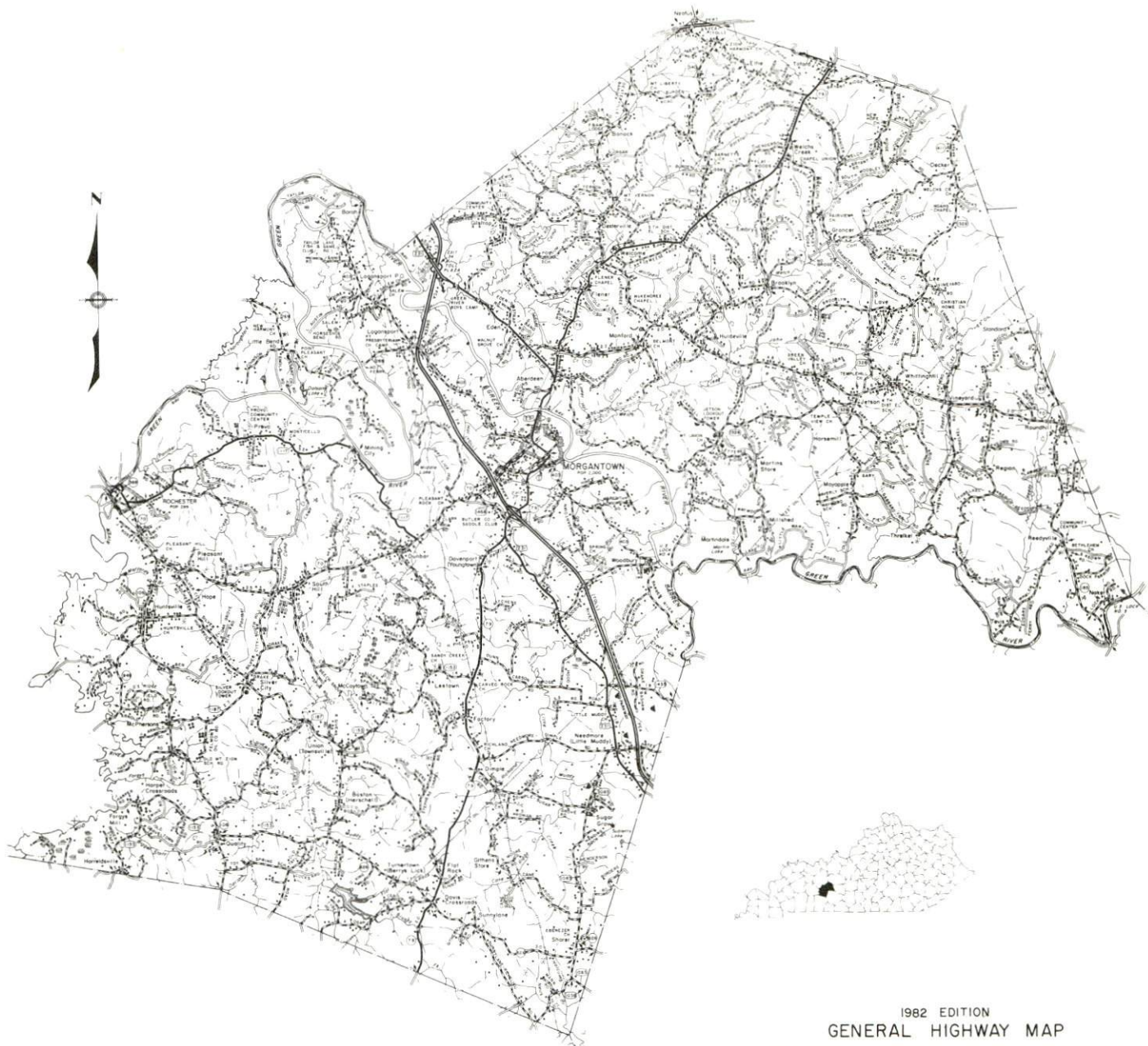
1983

Program manager - Pam Riley; research - James Thompson; clerical - Shirley Wood; graphics - Frank Ferrante, Tony Cecconi, Robert Owens; cartography - Site Evaluation Section, Division of New Industries. Cost of Printing paid from state funds.

TABLE OF CONTENTS

<u>Chapter</u>	<u>Page</u>
INDUSTRIAL SITES	i
MORGANTOWN, KENTUCKY - A RESOURCE PROFILE	1
THE LABOR MARKET AREA	3
Population	3
Labor Force Characteristics of Residents, 1981	3
Selected Components of Nonagricultural Employment, By Place of Work, 1981	4
Morgantown Manufacturing Firms, Their Products and Employment	4
Labor Organizations in Manufacturing Firms	5
Industrial Services	5
Estimated Male Labor Supply	6
Estimated Female Labor Supply	7
Average Weekly Wages by Industry, by Place of Work, 1981	8
Per Capita Personal Income	10
TRANSPORTATION	11
Rail	11
Highways	11
Truck Service	12
Air	13
Bus	14
Rental Services	14
Water	14
POWER AND FUEL	15
Electricity	15
Natural Gas	16
Other Fuels	16
WATER AND SEWERAGE	17
Public Water Supply	17
Raw Water	19
Sewerage	19
CLIMATE	20

<u>Chapter</u>	<u>Page</u>
LOCAL GOVERNMENT	21
City	21
County	21
Assessed Value of Property, 1982	21
Property Taxes	22
Combined State and Local Rates Per \$100 Valuation, 1982	22
Utilities Gross Receipts Tax for Schools	23
Planning and Zoning	23
Safety	23
Police	23
Fire	23
Rescue Service	23
Refuse Collection and Disposal	24
EDUCATION	25
Public Schools	25
Area Colleges and Universities	26
Vocational Schools	27
HEALTH	29
Local Medical Personnel	29
Hospitals	29
Other Medical Facilities	30
Ambulance Service	30
Public Health	30
OTHER LOCAL FACILITIES	31
Communications	31
Library Services	31
Religious Institutions	32
Financial Institutions	32
Hotels and Motels	32
Clubs and Organizations	32
RECREATION	33
COMMUNITY IMPROVEMENTS	35



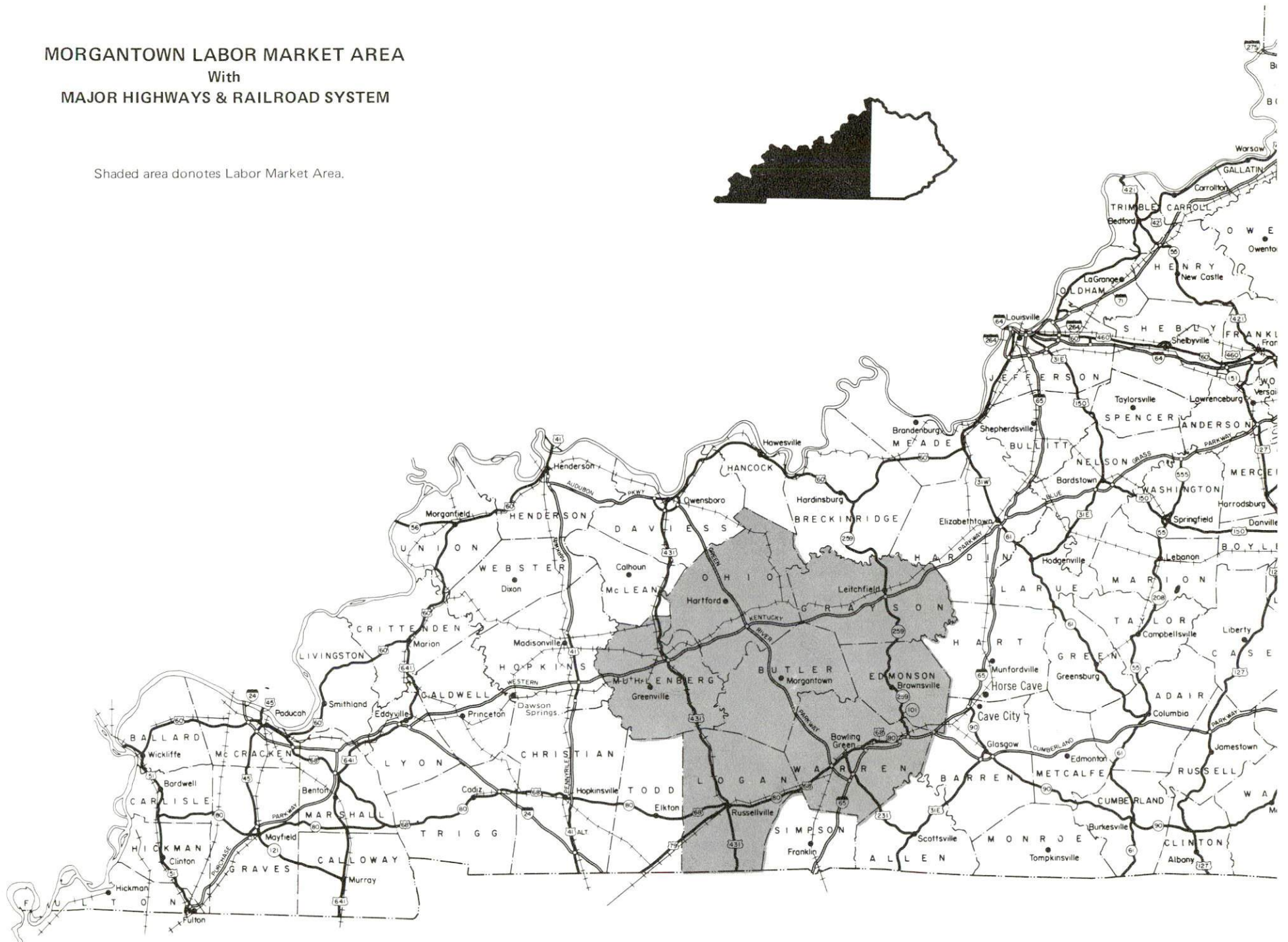
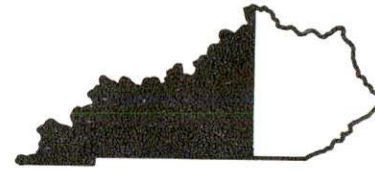
1982 EDITION
GENERAL HIGHWAY MAP
BUTLER COUNTY
KENTUCKY

PREPARED BY THE
KENTUCKY DEPARTMENT OF TRANSPORTATION
BUREAU OF HIGHWAYS
DIVISION OF PROJECT DEVELOPMENT
IN COOPERATION WITH THE
U.S. DEPARTMENT OF TRANSPORTATION
FEDERAL HIGHWAY ADMINISTRATION



MORGANTOWN LABOR MARKET AREA
With
MAJOR HIGHWAYS & RAILROAD SYSTEM

Shaded area donotes Labor Market Area.



MORGANTOWN, KENTUCKY - A RESOURCE PROFILE

Morgantown, the county seat of Butler County, is located in the central portion of Butler County. Morgantown, with a population of 2,000 in 1980, is located only 25 miles from Bowling Green, which provides the residents the advantages of a metropolitan area. Morgantown is 120 miles southwest of Louisville, Kentucky; 86 miles north of Nashville, Tennessee; and 255 miles southeast of St. Louis, Missouri.

Butler County, with a land area of 441 square miles, is located in southwestern Kentucky in the Western Coal Field. In 1980, Butler County had a population of 11,064.

The Economic Framework

The total number of Butler County residents employed in 1981 averaged 3,230, with nonagricultural jobs accounting for 2,840 workers. Manufacturing employers in the county reported 590 workers; mining and quarrying firms 190; construction firms 50; wholesale and retail trade 280; state and local government 380; and 200 employees in service occupations. Manufacturing employment is greatest in the apparel and related products industry.

Per capita personal income in Butler County in 1980 was \$5,292. Between 1976 and 1980 per capita income increased by 44.7 percent.

The Morgantown labor market area includes Butler and the six adjoining counties. The total number of residents of the labor market area employed in 1981 averaged 82,950, with nonagricultural jobs accounting for 77,970 workers. Manufacturing employers in the area reported 15,340 workers; mining and quarrying firms 3,820; construction firms 3,120; wholesale and retail trade 11,920; state and local government 8,510; and 7,690 in the service industries.

Resources for Growth

1. Labor Supply - There is a current labor supply of 13,100 men and 8,945 women available for industrial jobs in the labor market area. In addition, from 1983 through 1987, 7,640 young men and 7,350 young women in the area will become 18 years of age and potentially available for work.

2. Transportation - The Seaboard System Railroad provides main line service at Bowling Green, 25 miles from Morgantown, and the Illinois Central Gulf Railroad provides main line service at Beaver Dam, 18 miles from Morgantown. The Green River Parkway directly serves Morgantown, with the Western Kentucky Parkway located 14 miles to the northwest and Interstate 65 located 26 miles to the southeast. Morgantown is served by seven common carriers. A small craft airport is located 2 miles northwest of Morgantown. Scheduled commercial airline service is available at the Evansville Dress Regional Airport, 91 miles northwest, and at the Nashville Metropolitan Airport, 92 miles to the south.

3. Power and Fuel - Electric power is provided to Morgantown and Butler County by the Warren Rural Electric Cooperative Corporation. Butler County is also served by the Pennyrile Rural Electric Cooperative Corporation. Tennessee Valley Authority serves as the source of supply for both RECC's. Natural gas service is provided by the Morgantown Gas System which is supplied by the Midwestern Gas Transmission Company. Two distributors of propane and eight distributors of distillate fuel oil serve Morgantown.

4. Education - Primary and secondary education is provided by the Butler County School System which serves approximately 2,200 students.

There is one university, two senior colleges, and three community colleges located within 70 miles of Morgantown.

The Bowling Green State Vocational-Technical School, 25 miles away, offers training in 25 courses. There are four area vocational education centers located within a 35-mile radius of Morgantown.

THE LABOR MARKET AREA

The Morgantown Labor Market Area includes Butler County and the adjoining Kentucky counties of Edmonson, Grayson, Logan, Muhlenberg, Ohio and Warren.

POPULATION			
Area	1980	1970	Percent Nonwhite
Morgantown	2,000	1,394	1.6
Labor Market Area	191,849	160,923	N/A
Butler County	11,064	9,723	0.6
Edmonson County	9,962	8,751	1.9
Grayson County	20,854	16,445	0.6
Logan County	24,138	21,793	9.3
Muhlenberg County	32,238	27,537	5.3
Ohio County	21,765	18,790	1.4
Warren County	71,828	57,884	9.0

Note: The 1980 counts of population by race are provisional.

Sources: U. S. Department of Commerce, Bureau of the Census, 1980 Census of Population and Housing, March 1981; 1980 Census of Population, Number of Inhabitants. Population Research Unit, Urban Studies Center, University of Louisville, Kentucky Demographics: The 1980 Census of Kentucky, Characteristics of Population, Households, Housing, January 1982.

LABOR FORCE CHARACTERISTICS OF RESIDENTS, 1981

	Butler County	Labor Market Area
Civilian Labor Force	3,731	91,348
Employment	3,230	82,953
Agricultural	394	4,980
Nonagricultural	2,836	77,973
Unemployment	501	8,395
Rate of Unemployment (%)	13.4	9.2

Source: Kentucky Cabinet for Human Resources, Kentucky Labor Force Estimates, Annual Averages, 1981.

SELECTED COMPONENTS OF NONAGRICULTURAL EMPLOYMENT,
BY PLACE OF WORK, 1981

	<u>Butler County</u>	<u>Labor Market Area</u>
All Industries (total)	1,816	54,438
Manufacturing	586	15,342
Wholesale & Retail Trade	283	11,921
Services	196	7,691
State/Local Government	381	8,506
Contract Construction	46	3,120
Mining & Quarrying	192	3,816

Note: Excludes domestic workers, railway workers, certain nonprofit corporations, majority of federal government workers, and self-employed workers.

Source: Kentucky Cabinet for Human Resources, Average Monthly Workers Covered by Kentucky Unemployment Insurance Law, 1981.

MORGANTOWN MANUFACTURING FIRMS,
THEIR PRODUCTS AND EMPLOYMENT

<u>Firm</u> (Establishment date)	<u>Product</u>	<u>Employment</u>		
		<u>Total</u>	<u>Male</u>	<u>Female</u>
B & R Lumber Company, Inc. (1959)	Pallet crating lumber	44	42	2
Coleman-Martin Construction (1968)	Sectional homes	20	19	1
Green River Republican (1885)	Newspaper, job printing	3	1	2
Kane Industries, Inc. #3 (1953)	Men's & boys' sport and suit coats	196	13	183
Kellwood Company (1967)	All weather coats, rain- wear, women's blazers & shirts	326	55	271
Morgantown Feed Mill (1955)	Feed, fertilizer	13	11	2
Morgantown Manufacturing Company (1973)	Auto parts	19	14	5

Source: Kentucky Department of Economic Development, Division of Research and Planning.

LABOR ORGANIZATIONS IN MANUFACTURING FIRMS

There are no unions representing manufacturing workers in Morgantown at the present time.

INDUSTRIAL SERVICES

<u>Types of Services</u>	<u>Location</u>	<u>Mileage from Morgantown</u>
Tool & Die, Machine & Pattern Shops	McHenry, Kentucky	22
	Bowling Green, Kentucky	25
Metal Service Centers	Bowling Green, Kentucky	25
Heat Treating	Nashville, Tennessee	86
Metal Finishers	Hartford, Kentucky	22
Electric Motor Repair	Bowling Green, Kentucky	25

Source: Kentucky Department of Economic Development, Kentucky Directory of Selected Industrial Services, 1981; Division of Research and Planning.

ESTIMATED MALE LABOR SUPPLY
MORGANTOWN LABOR MARKET AREA

Area	Current			Under- employed	Future
	Total	Not in Labor Force	Unemployed		Becoming 18 years of age 1983 thru 1987
Labor Market					
Area*	13,100	3,703	5,191	4,206	7,643
Butler	1,600	1,091	273	236	483
Edmonson	1,336	881	328	127	417
Grayson	1,004	0	621	383	963
Logan	1,958	1,042	555	361	966
Muhlenberg	2,180	689	1,097	394	1,371
Ohio	1,042	0	706	336	915
Warren	3,980	0	1,611	2,369	2,528

*Additional workers may be drawn from other nearby counties.

Note: Not in Labor Force - represents the number of persons who would enter the labor force if suitable employment were available (based on the assumption that persons in Kentucky would like to participate in the labor force in the same proportion that they do nationally). Unemployed - persons unemployed and actively seeking work; Underemployed - persons employed but working only 14 to 26 weeks per year.

Sources: Kentucky Cabinet for Human Resources, Kentucky Labor Supply Estimates by Area Development District and County, 1981. Kentucky Department of Economic Development, Future Labor Supply Becoming 18 Years of Age, 1983 Thru 1987.

ESTIMATED FEMALE LABOR SUPPLY
MORGANTOWN LABOR MARKET AREA

Area	Current			Under- employed	Future
	Total	Not in Labor Force	Unemployed		Becoming 18 years of age 1983 thru 1987
Labor Market					
Area*	8,945	1,415	3,204	4,326	7,353
Butler	897	446	228	223	457
Edmonson	796	364	273	159	425
Grayson	600	0	260	340	886
Logan	1,018	182	462	374	960
Muhlenberg	1,225	423	414	388	1,235
Ohio	621	0	220	401	944
Warren	3,788	0	1,347	2,441	2,446

*Additional workers may be drawn from other nearby counties.

Note: Not in Labor Force - represents the number of persons who would enter the labor force if suitable employment were available (based on the assumption that persons in Kentucky would like to participate in the labor force in the same proportion that they do nationally). Unemployed - persons unemployed and actively seeking work; Underemployed - persons employed but working only 14 to 26 weeks per year.

Sources: Kentucky Cabinet for Human Resources, Kentucky Labor Supply Estimates by Area Development District and County, 1981. Kentucky Department of Economic Development, Future Labor Supply Becoming 18 Years of Age, 1983 Thru 1987.

AVERAGE WEEKLY WAGES BY INDUSTRY
BY PLACE OF WORK, 1981

	Butler County	Edmonson County	Grayson County	Logan County
All Industries	\$199.48	\$174.10	\$205.27	\$236.22
Mining & Quarrying	358.78	*	230.96	297.34
Contract Construction	163.56	210.26	217.34	350.53
Manufacturing	165.93	*	227.66	249.43
Transportation, Communications & Public Utilities	316.30	210.52	274.78	299.31
Wholesale & Retail Trade	176.61	155.98	167.73	168.47
Finance, Insurance & Real Estate	193.81	177.49	247.45	223.13
Services	145.18	191.35	157.99	167.11
State/Local Government	199.40	186.63	205.70	220.21
Other	*	*	164.39	190.47

	Muhlenberg County	Ohio County	Warren County
All Industries	\$322.65	\$300.63	\$255.64
Mining & Quarrying	558.89	537.38	246.72
Contract Construction	333.71	409.51	282.52
Manufacturing	195.14	217.74	330.88
Transportation, Communications & Public Utilities	362.47	283.98	326.80
Wholesale & Retail Trade	210.14	162.94	181.90
Finance, Insurance & Real Estate	239.24	237.27	256.98
Services	184.85	175.96	204.28
State/Local Government	230.93	185.74	268.15
Other	225.79	109.14	127.81

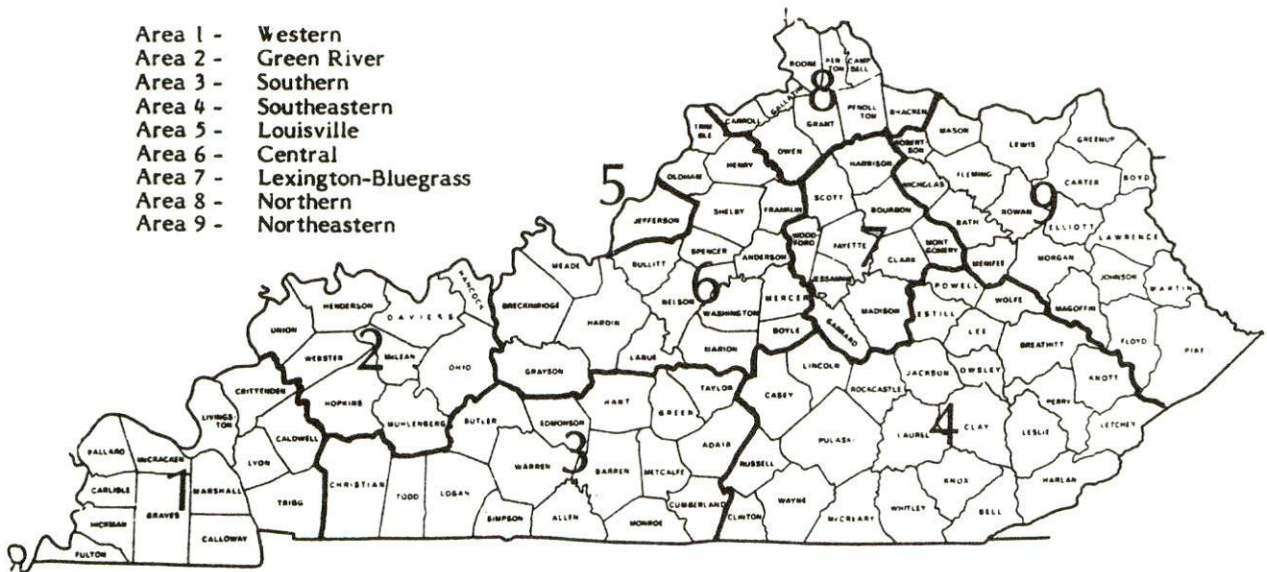
*Not disclosed.

Note: Excludes domestic workers, railway workers, certain nonprofit corporations, majority of federal government workers, and self-employed workers.

Source: Kentucky Cabinet for Human Resources, Average Weekly Wages of Workers Covered by Kentucky Unemployment Insurance Law, 1981.

Occupational wage rates for specific industries are usually not available to most government agencies, and wage data furnished to state employment agencies by individual industrial employers are protected from disclosure by federal law. The most reliable up-to-date wage information can be obtained by direct contact with local employers.

Associated Industries of Kentucky, a voluntary organization of Kentucky businesses, regularly collects occupational wage rates and fringe benefits data from participating member firms. Data are compiled for over 127 clearly defined office, production, and service occupations. Tabulations are published for nine geographical areas of Kentucky, as shown on the map below. It should be noted that the data may be weighted by the preponderance of firms in the larger cities and may be somewhat higher than the rates paid in the smaller communities. Data from these tabulations are available, upon request, from the Kentucky Department of Economic Development, Frankfort, Kentucky 40601.



Associated Industries of Kentucky Area Wage Surveys

Up-to-date occupational wage rates of the existing industries are maintained by South Kentucky Industrial Development Association, Post Office Box 726, Hopkinsville, Kentucky 42240.

PER CAPITA PERSONAL INCOME

<u>Area</u>	<u>1976</u>	<u>1980</u>	<u>Percent Change</u>
Butler County	\$ 3,658	\$ 5,292	44.7
Labor Market Area			
Range	\$3,221 - 5,760	\$4,520 - 8,254	N/A
Kentucky	5,263	7,662	45.6
U. S.	6,367	9,511	49.4

Source: U. S. Bureau of Economic Analysis, Kentucky Economic Information System, June 1982.

TRANSPORTATION

Rail

Morgantown is not directly served by a railroad. However, freight service is available within 25 miles of the city.

Line serving Bowling Green, 25 miles southeast of Morgantown -Seaboard System Railroad

Services - Main line; one northbound freight and one southbound freight stop daily - other stops scheduled when needed; local daily freights to Elizabethtown and Russellville, Kentucky, and Portland, Tennessee; 3 northbound and 3 southbound through freights daily; switching facilities; team track with space for 10 cars; siding space for 35 cars; piggyback facilities.

For details on routing, schedules, rates, and services, contact:

Manager of Industrial Development
Seaboard System Railroad
P. O. Box 32290
Louisville, Kentucky 40232
(502) 587-5228

Line serving Beaver Dam, 18 miles northwest of Morgantown - Illinois Central Gulf Railroad

Services - 1 local freight from Central City to Beaver Dam and return 6 days a week; 3 northbound and 3 southbound through freights daily; switching services provided by local freight; team track with space for 20 cars plus siding space for 20 cars; piggyback facilities available at Louisville, 111 miles northeast of Beaver Dam

For details on routing, schedules, rates, and services, contact:

Director of Industrial Development
Illinois Central Gulf Railroad
Central Region
Pet Plaza
400 South 4th Street
St. Louis, Missouri 63102
(314) 622-6430

Highways

Morgantown is directly served by the Green River Parkway, a multi-lane toll road; U. S. 231, a "AAA" rated trucking highway; Kentucky Highway 79, a "AA" rated trucking highway; and Kentucky Highway 70. The Green River Parkway intersects with the Western Kentucky Parkway, a multi-lane toll road, 14 miles northwest of Morgantown, and with Interstate 65, a major north-south highway, 26 miles southeast of Morgantown.

Truck Service

<u>Company</u>	<u>Home Office</u>
Majors Transit, Inc.*	P. O. Box 7 Caneyville, Kentucky 42721
McLean Trucking Company**	P. O. Box 213 Winston-Salem, North Carolina 27154
Overnite Transportation Company**	P. O. Box 1216 Richmond, Virginia 23209
Smith's Transfer Corporation**	P. O. Box 1000 Staunton, Virginia 24401
Thurston Motor Lines, Inc.**	600 Johnston Road Charlotte, North Carolina 28206
United Trucking Service, Inc.*	8505 West Warren Dearborn, Michigan 48126
Yellow Freight System, Inc.**	10990 Roe Avenue P. O. Box 7270 Overland Park, Kansas 66207

<u>Other Freight Services</u>	<u>Nearest Shipping Center or Home Office</u>
Purolator Courier Corporation***	Louisville, 120 miles distant
United Parcel Service***	Bowling Green, 25 miles distant
KATO Express, Inc. (air cargo service)****	Elizabethtown, 63 miles distant
Red Arrow Delivery Service (air cargo service)*****	Bowling Green, 25 miles distant

* Interstate and intrastate service.

** Interstate service only.

*** For regular scheduled pickups or for occasional pickups, arrangements must be made with the Louisville office of Purolator Courier Corporation or United Parcel Service.

**** Daily pickup and delivery service is available to and from Standiford Field in Louisville. Arrangements for service should be made through the home office in Elizabethtown.

***** Daily pickup and delivery service is available to and from Standiford Field in Louisville, Kentucky, and Nashville Metropolitan Airport in Nashville, Tennessee. Arrangements for service should be made through the shipping center in Bowling Green.

**HIGHWAY MILES AND TRUCK TRANSIT TIME IN DAYS FROM
MORGANTOWN, KENTUCKY, TO SELECTED MARKET CENTERS**

City	Highway Miles	Delivery		City	Highway Miles	Delivery	
		Time TL				Time TL	
Atlanta, Ga.	328	2		Los Angeles, Ca.	2,100	5	
Baltimore, Md.	699	3		Louisville, Ky.	120	1	
Birmingham, Ala.	282	2		Nashville, Tenn.	86	1	
Chicago, Ill.	379	1		New Orleans, La.	603	3	
Cincinnati, Ohio	221	1		New York, N. Y.	861	3	
Cleveland, Ohio	465	1		Pittsburgh, Pa.	501	3	
Detroit, Mich.	480	2		St. Louis, Mo.	255	1	
Knoxville, Tenn.	264	2					

Note: Mileage computations are via the best interstate or primary highways, not necessarily the most direct route of travel.

Sources: Rand McNally Interstate Road Atlas, 1981. Official Kentucky Mileage Map, 1980. Delivery time - Major Truck Transit, Inc., 1110 Wilson Avenue, Louisville, Kentucky.

Air

Local .

Location: Morgantown Municipal Airport*
 2 miles northwest of Morgantown
 Runways: 1 turf
 Length: 2,750 feet
 Traffic
 Control: Wind sock
 Lighting: None
 Services: Tie down

* The City of Morgantown has appointed a board of directors to run the Morgantown Municipal Airport. The construction of 1,500 feet of a 4,000-foot, \$120,000 concrete runway is to begin in the spring of 1983. An additional 1,500-foot will be constructed in the summer of 1983, with plans for the additional 1,000-foot to be completed when financing is available. There are also plans to set up an emergency lighting system and to build two hangars.

Nearest Scheduled Commercial Airline Service

Location: Evansville Dress Regional Airport
4 miles north of Evansville, Indiana; 91 miles
northwest of Morgantown

Runways: 3 paved
Length: 8,021 feet; 5,088 feet; 3,500 feet

Traffic Control: Tower

Lighting: Beacon, runway

Services: USAir, Eastern, Britt Airways, Comair; fuel - 80,
100LL; hangars, tie-downs; major A & P repairs,
major Avionics repairs; flight instruction, APU,
charter, oxygen, plane rental, survival equipment;
taxi, car rentals, courtesy car; weather information,
restaurant

Air Freight Service: Air freight terminal

Location: Nashville Metropolitan Airport
6 miles southeast of Nashville, Tennessee; 92 miles
south of Morgantown

Runways: 3 paved
Length: 8,000 feet; 7,700 feet; 4,320 feet

Traffic Control: Tower

Lighting: Beacon, runway

Services: American, Braniff, Delta, Eastern, Ozark, Piedmont
Republic, TWA, USAir, Allegheny Commuter, Skyways,
Sunbird, Tennessee Airways; fuel - 100LL, jet-A;
tie-downs, hangers; major A & P repairs, major
Avionics repairs; APU, charter, flight instruction,
oxygen, plane rental, survival equipment, U. S. Customs;
taxi, limousine, car rental, public transit; weather
information, restaurant, snack bar

Air Freight Service: Air freight terminal

Bus - The nearest bus service is in Bowling Green, 25 miles southeast of Morgantown, which is served by Greyhound Bus Lines and Tennessee Trailblazers.

Rental Services - Automobile, truck, and trailer rentals are available at Bowling Green, 25 miles southeast of Morgantown.

Water - Morgantown is located on the Green River. A 9-foot navigation channel is maintained on the Green River to Mile 103 which is northwest of Morgantown. A 5-foot to 5.5-foot navigation channel is privately maintained to Mile 149 at Woodbury which is just north of Morgantown.

POWER AND FUEL

Electricity

Company serving **Morgantown** and a major portion of **Butler County** - Warren Rural Electric Cooperative Corporation*
Source of power - Tennessee Valley Authority
Total generating capacity - 31,109,160 KW
For industrial rates contact:

South Kentucky Industrial Development
Association, Inc.
P. O. Box 726
Hopkinsville, Kentucky 42240
(502) 885-5392

and/or

Warren RECC
P. O. Box 1118
Bowling Green, Kentucky 42101
(502) 842-6541

Company serving western part of **Butler County** - Pennyrile Rural Electric Cooperative Corporation
Source of power - Tennessee Valley Authority
Total generating capacity - 31,109,160 KW
For industrial rates contact:

South Kentucky Industrial Development
Association, Inc.
P. O. Box 726
Hopkinsville, Kentucky 42240
(502) 885-5392

and/or

Pennyrile RECC
P. O. Box 551
Hopkinsville, Kentucky 42240
(502) 886-2555

* The Warren Rural Electric Cooperative Corporation recently completed construction of a new primary substation at Aberdeen, 3 miles north of Morgantown. The \$2 million project, which was completed in March of 1983, increased the primary voltage for the area from 69,000 to 161,000 volts. The old substation will be used as a backup system for the area.

Natural Gas

Company serving **Morgantown** - Morgantown Gas System
Source of supply - Midwestern Gas Transmission Company
Size of transmission mains - 30-inch (supplier); 4-inch (distributor)
Distribution mains - 1 1/2, 2 and 4 inches
Distribution pressure - 25 psi
Btu content - 1,023 per cubic foot
Specific gravity - .570
For rates and supplies contact:

Morgantown Gas System
Box 417
Morgantown, Kentucky 42261
(502) 526-3650

Other Fuels

Propane (Located in Bowling Green, 25 miles distant)

Miller's Bottled Gas, Inc.
110 East Campbell Lane
Bowling Green, Kentucky 42101

Southern States Bowling Green
Petroleum Cooperative
Emmett Drive
Bowling Green, Kentucky 42101

Fuel oils

Distillate fuel oil - (Located within 25 miles)

Browning Oil Company
Louisville Road
Bowling Green, Kentucky 42101

Ramsey Oil Company
(Phillips 66 Fuel Oils)
633 U. S. 31-W Bypass
Bowling Green, Kentucky 42101

Exxon Company U. S. A.
3170 Industrial Boulevard
Bowling Green, Kentucky 42101

Roe Oil Company
800 Power
Bowling Green, Kentucky 42101

Hildreth Oil Company
Jobber Chevron
316 Portage Railroad
Bowling Green, Kentucky 42101

Southern States Bowling Green
Petroleum Cooperative
Emmett Drive
Bowling Green, Kentucky 42101

Marathon Oil Distributor
Highway 231
Hartford, Kentucky 42347

Texaco Heating Oil
(R. C. McKinney Distributor)
110 Plain Avenue
Bowling Green, Kentucky 42101

Residual fuel oil - Arrangements must be made with the refinery.

Low sulphur content coal - Available in Kentucky.

WATER AND SEWERAGE

Public Water Supply

Company serving **Morgantown** - Morgantown Water System*
P. O. Box 417
Morgantown, Kentucky 42261
(502) 526-3623

Source - Green River
Treatment plant capacity - 972,000 gallons per day
Average daily consumption - 315,000 gallons
Peak daily consumption - 417,000 gallons
Type treatment - Coagulation, sedimentation, filtration, and chlorination
Storage capacity - 658,000 gallons including clearwells
Size lines - 2, 4, 6, 8, 10, and 12 inches
Average pressure - 50 psi
Average temperature - 60 degrees F.

MONTHLY WATER RATES

First	2,000 gallons	\$5.50 (Minimum)
Next	3,000 gallons	1.90 per M gallons
Next	5,000 gallons	1.30 per M gallons
Next	10,000 gallons	1.05 per M gallons
All over	20,000 gallons	.80 per M gallons

Tap-on charge: 3/4-inch meter (Residential) - \$150
Over 3/4-inch meter (Commercial) - \$150
plus materials.

* The Morgantown Water System recently completed a \$750,000 water plant expansion. The expansion increased the treatment plant capacity from 432,000 gallons per day. Included in the project was the building of a 118,000-gallon clearwell.

Name of water district - Butler County Water System, Inc.*
P. O. Box 1118
Bowling Green, Kentucky 42101
(502) 842-6541

Area served - **Butler County** (Aberdeen; Kentucky Highway 70 to Jetson;
Kentucky Highway 79 west to Brooklin Road; U. S. Highway 231 from
Ohio County line to Warren County line; Kentucky Highway 79 south to
Richland Church, Woodbury, and Leetown areas)

Date when water district began operating - April 1973

Source of supply of treated water - Morgantown Water System

Average amount of water used in a 24-hour period - 157,753 gallons

Peak amount of water used in a 24-hour period - 264,970 gallons

Storage capacity - 300,000 gallons

Average pressure - 50 psi

Average temperature - 71 degrees F.

Size lines - 2, 3, 4, 6, and 8 inches

MONTHLY WATER RATES

			<u>Logansport- Dunbar Project 2</u>
First	2,000 gallons	\$6.63	\$ 7.63
Next	3,000 gallons - per M gallons	2.69	2.69
Next	5,000 gallons - per M gallons	2.19	2.19
Next	10,000 gallons - per M gallons	1.94	1.94
All over	20,000 gallons - per M gallons	1.69	1.69

Minimum Monthly Bill

Meter Size

5/8-inch	First	2,000 gallons	\$ 6.63	\$ 7.63
3/4-inch	First	3,000 gallons	9.32	10.32
1-inch	First	5,000 gallons	14.70	15.70
1 1/2-inch	First	10,000 gallons	25.65	26.65
2-inch	First	16,000 gallons	37.29	38.29
3-inch	First	30,000 gallons	61.95	62.95
4-inch	First	50,000 gallons	95.75	96.75
6-inch	First	100,000 gallons	180.25	181.25

(Cont'd.)

* The Logansport-Dunbar Water System, Inc., was merged with the Butler County Water System, Inc., in 1978.

CONTRIBUTION IN AID OF CONSTRUCTION

5/8-inch meter (Residential)	\$ 250
3/4-inch meter	300
1-inch meter	350
2-inch meter	675
3-inch meter	950
4-inch meter	1,350
6-inch, or larger, meter	Actual cost

Raw Water

Surface water sources - Green River

Average discharge - Green River at Lock 4 at Woodbury - 8,353 cfs
(44-year record, unadjusted, USGS)

Expected ground water yield - 5 to 50 gpm and 50 to 200 gpm in bands running parallel through the central part of the county and along the eastern boundary of the county; 5 gpm or less in the northern and southern parts of the county.

Sewerage

Company serving **Morgantown** - Morgantown Sewer System

P. O. Box 417

Morgantown, Kentucky 42261

(502) 526-3623

Design capacity - 200,000 gallons per day

Average daily flow - 160,000 gallons

Treatment - Primary and secondary

Type treatment - Aeration, clarifier, and chlorination

Treated effluent discharged into - Green River

Size of sanitary mains - 6, 8, 10, and 12 inches

Size of storm mains - 18 and 24 inches

Rates - 60 percent of monthly water bill

Tap-on charge: 3/4-inch to 4-inch - \$150

6-inch and over - \$150 plus materials

* A 201 Facilities Study is under way. Initial plans include expansion of plant capacity to 400,000 gallons per day and the extension of lines to future development sites.

CLIMATE

Butler County

Temperature

Normal (30-year record)	56.00 degrees
Average annual 1981	56.00 degrees
Record highest, July 1954 (41-year record)	105.00 degrees
Record lowest, February 1951 (41-year record)	-23.00 degrees
Normal heating degree days (30-year record) (Heating degree day totals are the sums of negative departures of average daily temperatures from 65 degrees F.)	4,629

Precipitation

Normal (30-year record)	41.88 inches
Mean annual snowfall (41-year record)	14.10 inches
Total precipitation 1981	43.35 inches
Mean number days precipitation (.01 inch or more) (41-year record)	115
Mean number days thunderstorms (41-year record)	45

Prevailing Winds (14-year record)

South-southwest

Relative Humidity (20-year record)

Midnight	78 percent
6 a.m.	81 percent
Noon	59 percent
6 p.m.	62 percent

Source: U. S. Department of Commerce, Environmental Science
Services Administration, Climatological Data, 1981.
Station of record: Evansville, Indiana.

LOCAL GOVERNMENT

City

Structure - Mayor - 4-year term; 6 council members - 2-year terms

Budget 1982 -	General Fund	\$192,948.00
	Water and Sewer Fund	205,716.69
	City Gas Fund	248,876.49

Fees and licenses - Occupational license fees - one percent on wages and one percent on net profits of businesses; business license fees - \$25.50 per year

County

Structure - County Judge/Executive - 4-year term; 5 magistrates - 4-year terms

Budget 1982-83 - General Fund \$322,636; Road Fund \$420,000

Assessed Value of Property, 1982*

<u>Classes of Property</u>	<u>Morgantown</u>	<u>Butler County</u>
Real Estate	\$16,142,488	\$ 92,143,327
Tangibles	2,990,892	34,096,909

*Excludes Homestead Exemptions.

Property Taxes

All property in Kentucky is assessed at 100 percent of fair cash value.

Land and buildings are taxed by the state and may be taxed by local jurisdictions. The state rate is \$0.224 per \$100 of assessed valuation.

Manufacturing machinery, raw materials inventories, pollution control equipment, and goods in the process of manufacture are not subject to local taxation. The state rate is \$0.15 per \$100.

Other tangible personal property owned by manufacturers (automobiles, trucks, finished goods, office furniture, office equipment) is taxed by the state at \$0.45 per \$100, and may be taxed by local jurisdictions.

Intangible personal property located in Kentucky (money in hand, shares of stock, notes, bonds, accounts receivable, and other credits) is taxed by the state at \$0.25 per \$100, and is not subject to local taxation.

Property stored in public warehouses in a transit status is not subject to local taxation. The state rate is only \$0.015 per \$100.

Private leaseholds in industrial facilities owned by cities or counties and financed by industrial revenue bonds are subject to a state tax of \$0.015 per \$100 of value (essentially the lessee's equity, adjusted for appreciation or depreciation). Local taxation is not permitted.

Combined State and Local Rates Per \$100 Valuation, 1982* (100% assessment)

	<u>Site Inside City of Morgantown</u>	<u>Site Inside Unincorporated Butler County</u>
1. Land and buildings	\$0.747	\$0.519
2. Mfg. machinery, raw materials, goods in process, pollution control equipment	0.150	0.150
3. Finished goods, office equipment, vehicles, other tangibles	1.035	0.807
4. Intangibles (accounts rec., notes, bonds, etc.)	0.250	0.250
5. Property stored in public warehouses in a transit status	0.015	0.015
6. Leaseholds in industrial revenue bond financed plants	0.015	0.015

*Kentucky Department of Economic Development.

Utilities Gross Receipts Tax for Schools

A 3 percent tax is levied on utilities receipts for schools in Butler County. Tax is paid by all consumers of utilities as an add-on to the utilities bills. Exempted are receipts from utilities services that are resold and the receipts from the sale of energy or energy-producing fuels that exceed 3 percent of the cost of production in manufacturing, processing, mining or refining.

Planning and Zoning

City agency - Morgantown Planning and Zoning Commission
Zoning enforced - Within city limits only
Subdivision regulations enforced - Within city limits only
Local codes enforced - Building and Housing
Mandatory state codes enforced - Kentucky Plumbing Code, National Electric Code, Kentucky Boiler Regulations and Standards, Kentucky Building Code (modeled after BOCA code)

Safety

Police	<u>Morgantown</u>	<u>Butler County</u>
Total staff	5	2 full-time 2 part-time
Radio-patrol cars	2	2
Fire		
Insurance Services Office, Public Protection Classification	7	-
Volunteers	13	-

Rescue Service

Butler County Civil Defense Rescue Squad:

Number of volunteers - 16

Equipment - 2 vans, utility truck, pickup truck, jeep, 2 troop carriers;
2 boats, outboard motor, dragging equipment, scuba diving equipment;
two-way radios; 5 light generators; "Jaws of Life" rescue apparatus

Personnel training - Emergency medical technician training, cardio-pulmonary resuscitation training, first aid, radiological monitoring, and scuba diving

Refuse Collection and Disposal

	<u>Morgantown</u>	<u>Butler County</u>
Type service	Private	Private
Fee charged:		
residential	\$4 to \$5	\$4 to \$5
business	\$8 to \$10	\$8 to \$10
industrial	Varies according to volume collected	Varies according to volume collected
Collection frequency:		
residential	Once weekly	Once weekly
business	Twice weekly	Twice weekly
industrial	By contract	By contract
Trash pickup	As needed	As needed
Disposal method	Landfill	Landfill

Butler County residents are afforded free access to the Warren County sanitary landfill.

EDUCATION

Public Schools

Butler County

Total Enrollment (Fall 1982)	2,196
Elementary	1,572
High School	624
Student-Teacher Ratio	18-1
Elementary	18-1
High School	18-3
Percent High School Graduates to College (1982)	27.6
Expenditures Per Pupil (1982-83)	\$ 1,521.93
Bonded Indebtedness (June 30, 1981)	\$ 925,000

Area Colleges and Universities

<u>Name</u>	<u>Location (Miles distant)</u>	<u>Enrollment (Fall, 1982)</u>	<u>Highest Degree Conferred</u>
Western Kentucky University	Bowling Green (25)	12,855	Masters, Specialist*
Brescia College	Owensboro (48)	912	Baccalaureate**
Kentucky Wesleyan College	Owensboro (48)	923	Baccalaureate**
Madisonville Community College	Madisonville (62)	1,263	Associate
Elizabethtown Community College	Elizabethtown (63)	2,187	Associate
Hopkinsville Community College	Hopkinsville (67)	1,164	Associate

* Joint doctoral degree programs are offered in cooperation with the University of Kentucky, Lexington, and cooperative doctoral degree programs are offered with the University of Louisville. The degrees are issued by the University of Kentucky or the University of Louisville.

** Courses in masters degree programs are taught on campus by faculty members of the Western Kentucky University or Murray State University. The degrees are issued by Western Kentucky University or Murray State University.

Vocational Schools

Both the state vocational-technical schools and the area vocational education centers are operated by the Kentucky Department of Education. The state vocational-technical schools enroll persons full time who are at least 16 years of age and not in school. These students attend classes for six hours each day. The area vocational education centers are designed to accommodate high school students who are at least 15 years of age. These students attend vocational school for three hours each day. The state vocational-technical schools and the area education centers offer evening courses to enable working adults to upgrade current job skills.

Nearest State School

Location	Bowling Green State Vocational-Technical School
Miles distant	Bowling Green 25
Curriculum	Business and Office Accounting/Jr. Management Clerical Secretarial Consumer and Home Economics Commercial Foods Health and Personal Services Occupations Dental Assistant Health Careers Nurse Assistant Practical Nurse* Respiratory Therapy* Surgical Technician Industrial Education Auto Body Repair Auto Mechanics Carpentry Civil Highway Technology Electricity Electronics Servicing Occupations Electronics Technology Graphic Arts (Printing) Machine Shop Masonry Refrigeration and Air Conditioning Small Engine Repair Technical Drafting Tool and Die Making Welding

*These courses are taught at the T. J. Samson Community Hospital in Glasgow.

There are four area vocational education centers located within a 35-mile radius of Morgantown. The schools are located at Hartford, Russellville, Leitchfield and Greenville. Courses offered through one or more of the schools include the following:

- Agriculture
 - Adult and Young Farmer
- Business and Office
 - Accounting/Jr. Management
 - Clerical
 - Secretarial
- Health and Personal Services Occupations
 - Health Careers
- Industrial Education
 - Auto Mechanics
 - Carpentry
 - Drafting
 - Industrial Electricity
 - Industrial Electronics
 - Machine Shop
 - Welding

Arrangements can be made to provide training in the specific production skills required by an industrial plant. Instruction may be conducted either in the vocational school or in the industrial plant, depending upon the desired arrangement and the availability of special equipment.

HEALTH

Local Medical Personnel

Physicians - 3
Dentists - 2

Hospitals

<u>General Hospital</u>	<u>Location</u>	<u>Beds</u>
Greenview Hospital*	Bowling Green, 25 miles distant	211
The Medical Center at Bowling Green	Bowling Green, 25 miles distant	298 including 15 psychiatric

Greenview Hospital

General hospital facilities - Six operating rooms, organized outpatient services, 16-bed coronary/intensive care unit, physical therapy department, pathological laboratory, electroencephalography, nuclear medicine, diagnostic department, inhalation therapy, X-ray department, outpatient department, pharmacy, coffee shop

Medical staff - 110 physicians, 68 full-time and 76 part-time registered nurses, 17 full-time and eight part-time licensed practical nurses, and 260 other employees

The Medical Center at Bowling Green

General hospital facilities - Eight operating rooms, eight emergency rooms, 12-bed coronary care unit, 12-bed intensive care unit, physical therapy department, respiratory therapy department, 15-bed psychiatric unit, laboratory and pathology, electrocardiograph, electroencephalograph, two computerized tomography, xeroradiography, neonatal intensive care unit, X-ray facilities, ambulance service, social services, home health agency, pharmacy, coffee shop, ultrasound, nuclear medicine, diagnostic radioisotope laboratory, occupational therapy

Medical staff - 108 physicians, 171 registered nurses, 93 licensed practical nurses, and 500 other employees

* The Greenview Hospital recently completed the construction of an additional floor which increased the number of acute care beds to 211. The project was completed in the fall of 1982 at a cost of \$5.6 million.

Other Medical Facilities

Wan's Medical Clinic

Staff - 2 doctors, 1 physician assistant, 4 technicians, 11 staff employees;
consulting doctors available from Bowling Green

Facilities - Emergency room, X-ray, laboratory

Ambulance Service

Name - Butler County Ambulance Service

Staff - 11 emergency medical technicians

Service - 24-hour, county-wide

Equipment - 2 fully-equipped ambulances

Public Health

Facility - Barren River District Health Department
(Butler County Health Center)

Staff - 2 nurses, 2 clerks, 1 health environmentalist, 1 community
health worker

OTHER LOCAL FACILITIES

Communications

Telephone - Services -	South Central Bell Telephone Company Standard
Telegraph - Services -	Western Union Telegraph Service Toll-free number, 1-800-325-5100
Postal - Class - Mail received - Mail dispatched -	U. S. Post Office Second Once daily Once daily
Newspapers - Weekly and circulation - Other papers received from -	The Green River Republican 3,700 Louisville, Owensboro and Bowling Green, Kentucky
Radio - Stations received from -	WLBQ-AM Bowling Green, Central City, Greenville, Glasgow, Leitchfield, Hardinsburg, Russellville, Owensboro, and Louisville, Kentucky; Gallatin and Nashville, Tennessee
Television - Cable service Reception from -	Bowling Green, Louisville and Paducah, Kentucky; Evansville, Indiana; Nashville, Tennessee; Atlanta, Georgia; and Chicago, Illinois
Kentucky Educational Television -	Bowling Green transmitter, Channel 53

Library Services

Public library - Butler County Public Library
Size collection - 33,224 volumes
Circulation, 1981-82 - 55,922 (includes bookmobile)
Services - Bookmobile, story hour, community room, arts and crafts show, services to the retarded, participation in summer work program, off campus courses through Western Kentucky University, interlibrary loan, talking books, 8 and 16 mm film, film strips, slide projectors, microfilm, copy machine, newspapers, magazines, and nursing home services

Religious Institutions

Number of churches - 10
Denominations - Baptist
Independent Baptist
Catholic
Church of Christ
Holiness
Church of Jesus Christ of Latter Day Saints
Nazarene
Pentecostal
Presbyterian
United Methodist

Nearest synagogue - Owensboro, Kentucky, 48 miles from Morgantown
Congregations - Adath Israel (reform)

Financial Institutions

<u>Banks</u>	<u>Assets</u>	<u>Deposits</u>	<u>Statement Date</u>
Green River Bank	\$ 6,529,000.00	\$ 5,929,000.00	6/30/82
Morgantown Deposit Bank	44,289,583.73	38,826,231.45	6/30/82

Hotels and Motels

Excellent accommodations are located at Bowling Green, only 25 miles from Morgantown. A 25-unit motel is planned for Morgantown.

Clubs and Organizations

Boy Scouts
Daughters of the American Revolution
Eastern Star
Girl Scouts
Jaycees
Jaycettes
Lions
Lioness
Masons
Morgantown-Butler County Chamber of Commerce
Odd Fellows
Rebekah
Senior Citizens Organization
Shrine Club

RECREATION

Local

Work is continuing on the development of the 40-acre Morgantown Municipal Park. Currently the park consists of a swimming pool, bathhouse, 6 tennis courts, 2 picnic pavilions, lighted baseball and softball field, lighted little league field, bleachers, and an amphitheater. There are plans at a later date to build a community center and an outdoor basketball court. When completed, the park will have an estimated cost of \$1 million.

Morgantown's location on the Green River provides an opportunity for enjoying a full range of water sports.

Area (Within 70 miles)

Lake Malone State Park, located in southern Muhlenberg County, 34 miles southwest of Morgantown, offers camping facilities, swimming, fishing and boating on a 788-acre lake. Playground facilities and picnic shelters are located in a beautiful scenic cliff area. Located across from the entrance to the park is an inn featuring luxury rooms, a restaurant, a swimming lake, a beach, boating, fishing, tennis, and nature trails.

Noteworthy for its spaciousness and perfect grooming, Rough River Dam State Resort Park at Falls of Rough, is 41 miles northeast of Morgantown. The 377-acre park on Rough River Lake has a 40-room lodge with a dining room, a coffee shop, a gift shop, and a meeting room. Cottages and camping sites are also available. Recreational facilities include a launching ramp, a dock with open and covered slips, fishing and pleasure boat rentals, a 9-hole golf course, a swimming pool, a sand beach with a bathhouse complex, 3 tennis courts, an archery range, hiking trails, picnic and playground areas, and planned recreation. Cruise boat excursions on Rough River Lake are available on the "Lady of the Lake."

Ben Hawes State Park, 48 miles northwest of Morgantown near Owensboro, is a 300-acre park which is open year round. It contains a softball field, tennis courts, an archery range, hiking trails, a picnic area and shelters, and an 18-and 9-hole golf course.

Mammoth Cave National Park is located 50 miles east of Morgantown near Cave City. Beneath 51,000 park acres, Mammoth Cave is among the major tourist attractions of all times. It is one of the largest cave networks ever discovered, with at least 150 miles charted on five levels and vast areas not yet mapped. Some famous sights are Snowball Dining Room (267 feet below surface), Frozen Niagara, Crystal Lake, and Bottomless Pit. The park also features scenic boat trips on the Green River and nature and hiking trails. Park

accommodations include a hotel with distinctive gift shops featuring native Kentucky and Southern Highland handicrafts, a motor lodge, hotel cottages, woodland cottages, and a hotel annex with budget accommodations and craft shop featuring live exhibits of broom making and weaving. Other park facilities include the hotel dining room and coffee shop, a service center, group meeting facilities, a campground, a picnic area, and tennis and shuffleboard courts.

Nolin River Lake, 52 miles east of Morgantown, is just north of Mammoth Cave National Park. The lake has a surface area of 5,800 acres and offers facilities for camping, boating, and fishing.

Jefferson Davis Monument State Shrine is located 58 miles southwest of Morgantown at Fairview. The shrine is at the site of the birthplace of Jefferson Davis, a former U. S. Senator, Secretary of War, and the only president of the Confederate States of America. The 16-acre park contains a 351-foot obelisk with an elevator to the top for viewing, a museum, a gift shop, and a playground with picnic tables.

Barren River Lake State Resort Park, 63 miles southeast of Morgantown near Glasgow, is a full-facility resort park offering a resort lodge, a coffee shop, cottages, a lodge pool, a beach, riding stables, nature trails, open and covered boat slips, a 9-hole par-3 golf course, lighted handball and tennis courts, shuffleboard, park camping with a service building, a restaurant, fishing and pleasure boat rentals, picnic areas, and a playground. Barren River Lake, which covers 10,000 acres, is a popular area for skiing, sailing, fishing, and swimming.

COMMUNITY IMPROVEMENTS

Recent

The City of Morgantown is continuing the development of its industrial site. In the summer of 1982, additional acreage adjacent to the site was purchased and cleared for future development. In a joint effort, the City of Morgantown and the Tennessee Valley Authority constructed a 20,000-square foot building on the site which is available for industrial use. The \$165,000 building was completed in 1982.

A new office for the Morgantown-Butler County Chamber of Commerce was constructed in the fall of 1981.

The City of Morgantown purchased and remodeled an existing building to house City Hall. Completed in September of 1982, the total cost of the project was \$170,000.

In the spring of 1982, the City of Morgantown purchased two new police cars.

The City of Morgantown has planted trees along the streets to aid in the Clean Up the Town Campaign. The estimated cost of the project was \$5,000.

The Butler County School System air-conditioned two elementary schools at a cost of \$55,000; purchased a new \$50,000 bus garage; and purchased three new buses for a total cost of \$68,000.

The City of Morgantown has constructed a boat ramp on the Green River at a cost of \$17,000.

Under Way

The Warren Rural Electric Cooperative Corporation recently completed construction of a new primary substation at Aberdeen, three miles north of Morgantown. The \$2 million project, which was completed in March of 1983, increased the primary voltage for the area from 69,000 to 161,000 volts. The old substation will be used as a backup system for the area.

Work is continuing on the development of the 40-acre Morgantown Municipal Park. Currently the park consists of a swimming pool, bathhouse, six tennis courts, two picnic pavillions, lighted baseball and softball fields, lighted little league field, bleachers, and an amphitheater. There are plans to build a community center and an outdoor basketball court. When completed, the park will have an estimated cost of \$1 million.

Planned

The City of Morgantown has appointed a board of directors to run the Morgantown Municipal Airport. The construction of 1,500 feet of a 4,000-foot, \$120,000, concrete runway is to begin in the spring of 1983. An additional 1,500 feet will be constructed in the summer of 1983, with plans for the remaining 1,000 feet to be completed when financing is available. There are also plans to set up an emergency lighting system and to build two hangars.

The City of Morgantown and a group of local citizens plan to build a 9-hole golf course. The \$400,000 project is scheduled to begin in 1983.

The Butler County School System is currently being considered for accreditation with the Southern Association of Colleges and Schools. There are plans to institute a program for gifted and talented students and to add speech therapy to the special education program.

WLBQ-AM radio station, located in Morgantown, has applied for a license with the FCC to increase its wattage from 250 to 1,000 watts.

