

1990

Industrial Resources: Calloway County - Murray

Kentucky Library Research Collections
Western Kentucky University, spcol@wku.edu

Follow this and additional works at: https://digitalcommons.wku.edu/calloway_cty

 Part of the [Business Administration, Management, and Operations Commons](#), [Growth and Development Commons](#), and the [Infrastructure Commons](#)

Recommended Citation

Kentucky Library Research Collections, "Industrial Resources: Calloway County - Murray" (1990). *Calloway County*. Paper 4.
https://digitalcommons.wku.edu/calloway_cty/4

This Report is brought to you for free and open access by TopSCHOLAR®. It has been accepted for inclusion in Calloway County by an authorized administrator of TopSCHOLAR®. For more information, please contact topscholar@wku.edu.

IR 673 Calloway

Resources for Economic Development

Murray



KENTUCKY
Open for Business

RESOURCES FOR ECONOMIC DEVELOPMENT

MURRAY, KENTUCKY

Prepared by
The Kentucky Cabinet for Economic Development
Division of Research and Planning
in cooperation with
The Murray-Calloway County Chamber of Commerce

1990

Division Director - Pamela K. Riley; program manager - Keith Roberts; research - Scott Hourigan; clerical - Wanda Sharp; graphics - Robert Owens, Pat Coleman; cartography - Edwin Scott, Dave Clark. Cost of printing paid from state funds.

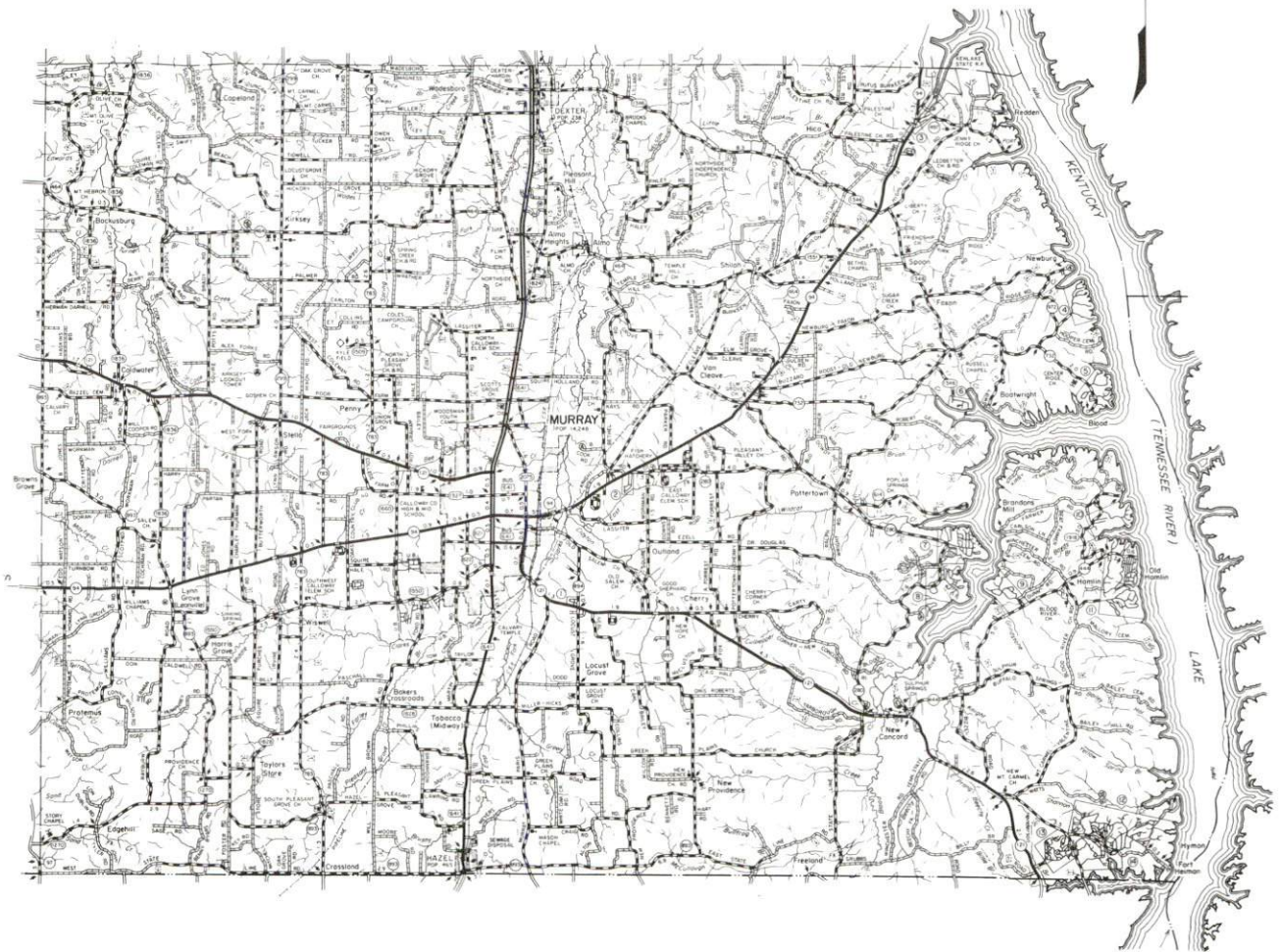
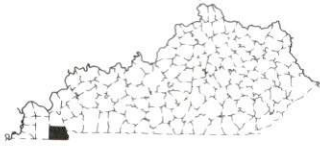
TABLE OF CONTENTS

<u>Chapter</u>	<u>Page</u>
MURRAY, KENTUCKY - A RESOURCE PROFILE	1
THE LABOR MARKET STATISTICS	2
Labor Market Area Map	2
Population	3
Population Projections.....	3
Estimated Labor Supply.....	3
Labor Force Characteristics of Residents, 1989.....	4
Selected Components of Nonagricultural Employment, by Place of Work, 1989	5
Per Capita Personal Income	6
Average Placement Wages	7
Average Weekly Wages of Workers Covered by Unemployment Insurance 1988 - Bar Chart	8
Average Weekly Wages by Industry, by Place of Work, 1988	9
EXISTING INDUSTRY	10
Murray Manufacturing Firms, Their Products and Employment	10
Labor Organizations in Manufacturing Firms.....	11
Selected Industrial Services	12
TRANSPORTATION.....	13
Highways	13
Truck Service	13
Selected Market Location Map.....	14
Rail.....	15
Air.....	15
Water	16
UTILITIES	17
Electricity	17
Natural Gas	17
Public Water Supply	18
Sewerage	18
CLIMATE.....	19

<u>Chapter</u>	<u>Page</u>
LOCAL GOVERNMENT.....	20
Structure	20
Planning and Zoning	20
Local Fees and Licenses	20
State and Local Property Taxes	21
Combined State and Local Rates Per \$100 Valuation, 1989.....	21
EDUCATION	22
Public Schools	22
Area Colleges and Universities	22
Vocational Training.....	24
OTHER LOCAL FACILITIES.....	25
Local Medical Personnel	25
Hospitals.....	25
Other Medical Facilities and Services.....	25
Banks and Savings & Loan Associations.....	25
Newspapers	25
Telephone Service.....	25
RECREATION	26
COMMUNITY IMPROVEMENTS.....	27

GENERAL HIGHWAY MAP
CALLOWAY COUNTY
KENTUCKY

PREPARED BY THE
KENTUCKY TRANSPORTATION CABINET
DEPARTMENT OF HIGHWAYS
DIVISION OF PLANNING
IN COOPERATION WITH THE
U.S. DEPARTMENT OF TRANSPORTATION
FEDERAL HIGHWAY ADMINISTRATION



MURRAY, KENTUCKY - A RESOURCE PROFILE

Murray, home of Murray State University, is located in extreme southwestern Kentucky. Murray, with a 1988 estimated population of 13,760, is the county seat of Calloway County.

Calloway County covers 386 square miles of gently rolling plain in Kentucky's Jackson Purchase Region. Kentucky Lake marks the eastern boundary of the county and the southern boundary is the Kentucky-Tennessee state line. The 1988 estimated population of Calloway County was 30,800.

Murray's location places the city 122 miles northwest of Nashville, Tennessee; 225 miles southwest of Louisville, Kentucky; and 214 miles southeast of St. Louis, Missouri.

The Economic Framework - The total number of Calloway County residents employed in 1989 averaged 15,029. Manufacturing firms in the county reported 2,368 employees; wholesale and retail trade provided 2,955 jobs; 1,138 people were employed in service occupations; state and local government accounted for 2,795 employees; and contract construction firms provided 556 jobs.

Labor Supply - There is a current estimated labor supply of 13,136 persons available for industrial jobs in the labor market area. In addition, from 1990 through 1994, 6,177 young persons in the area will become 18 years of age and potentially available for industrial jobs.

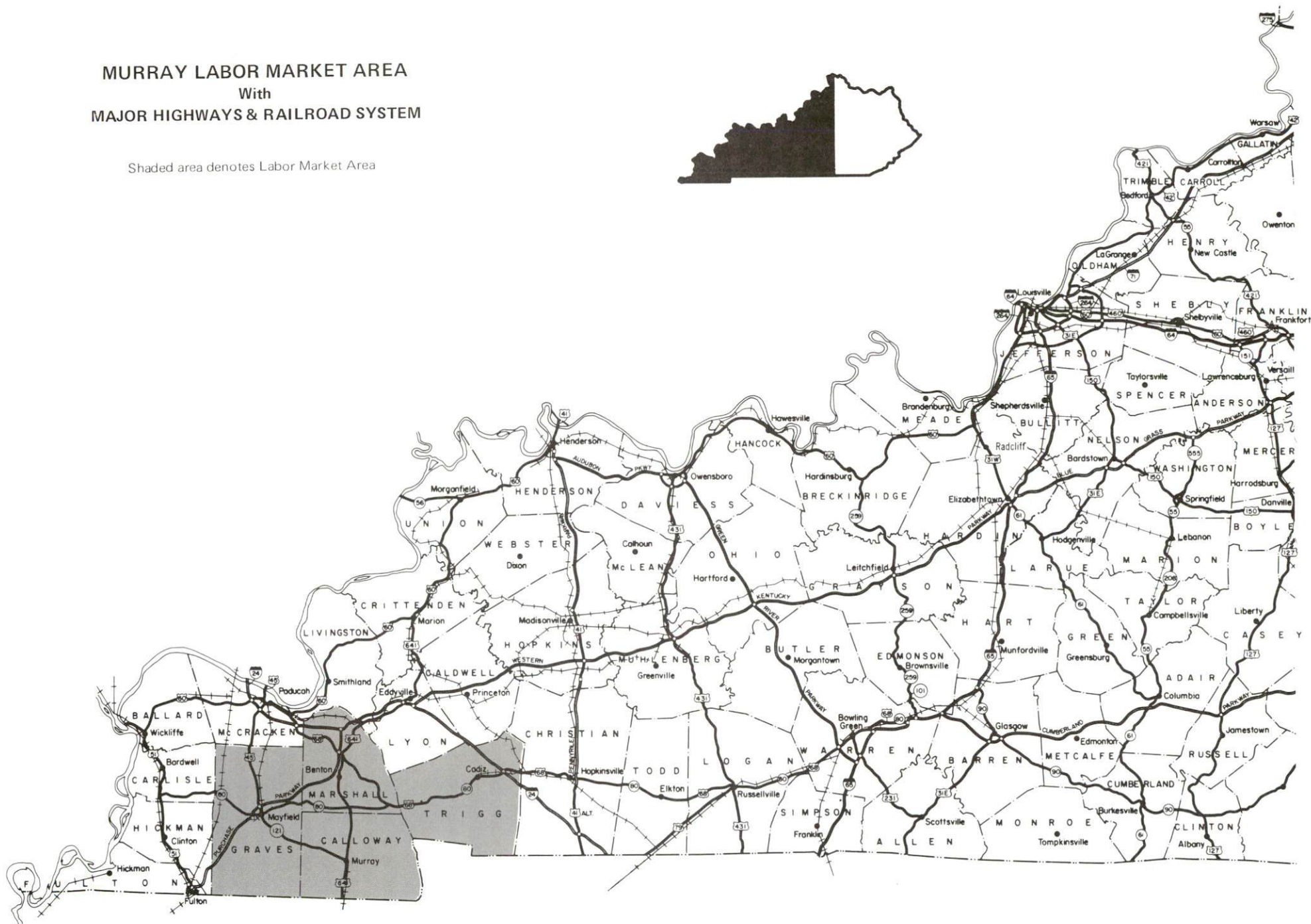
Transportation - Railroad service is provided to Murray by the K.W.T. Railway and the J & J Railroad. The primary highways serving Murray are U.S. Highway 641, and Kentucky Highways 94 and 121 (northeast of Murray), all "AAA"-rated (80,000-pound gross load limit) trucking highways. The Purchase Parkway, a multi-lane toll road, is accessible 19 miles north of Murray via U.S. 641. Interstate 24 is accessible 27 miles north of Murray via U.S. 641 and the Purchase Parkway. Truck service is provided to Murray by 23 common carriers which provide interstate and/or intrastate service. The Murray-Calloway County Airport, 5 miles northwest of the city, has a 5,000-foot paved runway. The nearest scheduled commercial airline service is available at Barkley Regional Airport in Paducah, 49 miles northwest of Murray. The Nashville Metropolitan Airport is 128 miles southeast of Murray.

Power and Fuel - The Murray Electric System provides electric service to Murray. West Kentucky RECC serves Calloway County. The source of supply for both distributors is Tennessee Valley Authority. Murray Natural Gas System provides natural gas to the city. The source of supply is Texas Gas Resources Corporation.

Education - Two public school systems serve Calloway County. The Murray Independent School System and the Calloway County School System are each accredited by the Southern Association of Colleges and Schools. Murray State University is a state-supported institution of higher education offering undergraduate, graduate, and professional programs in the fields of business and public affairs, creative expression, environmental sciences, human development and learning, humanistic studies, and industry technology. Vocational education is available at the Murray Area Vocational Education Center and at the West Kentucky State Vocational-Technical School in Paducah, 49 miles northwest of Murray.

MURRAY LABOR MARKET AREA With MAJOR HIGHWAYS & RAILROAD SYSTEM

Shaded area denotes Labor Market Area



LABOR MARKET STATISTICS

The Murray Labor Market Area includes Calloway County and the adjoining Kentucky counties of Graves, Marshall and Trigg. The southern boundary of Calloway County is formed by the Tennessee state line. Although not included in the statistics below, the Murray Labor Market Area also includes Henry County in Tennessee.

POPULATION			
	1988*	1980	1970
Labor Market Area	100,700	99,101	87,632
Murray	13,760	14,248	13,537
Calloway County	30,800	30,031	27,692

* Population estimates.

Sources: U.S. Department of Commerce, Bureau of the Census, August 1989; November 1989.

POPULATION PROJECTIONS				
	2000	2010	2020	2030
Labor Market Area	99,460	97,090	93,700	88,740
Calloway County	30,030	29,010	27,600	25,640

Source: University of Louisville, Urban Studies Center, State Data Center.

ESTIMATED LABOR SUPPLY					
	Current				Future
	Total	Unemployed	Employed Part-Time	Not in Labor Force	Becoming 18 years of age 1990 thru 1994
Labor Market Area*	13,136	3,011	5,478	4,647	6,177
Calloway County	2,994	720	2,274	0	1,612

* Additional workers may be drawn from other nearby counties.

Note: Unemployed - persons unemployed and actively seeking work; Employed Part-Time - persons employed but working only 14 to 26 weeks per year; Not in Labor Force - represents the number of persons who would enter the labor force if suitable employment were available (based on the assumption that persons in Kentucky would like to participate in the labor force in the same proportion that they do nationally).

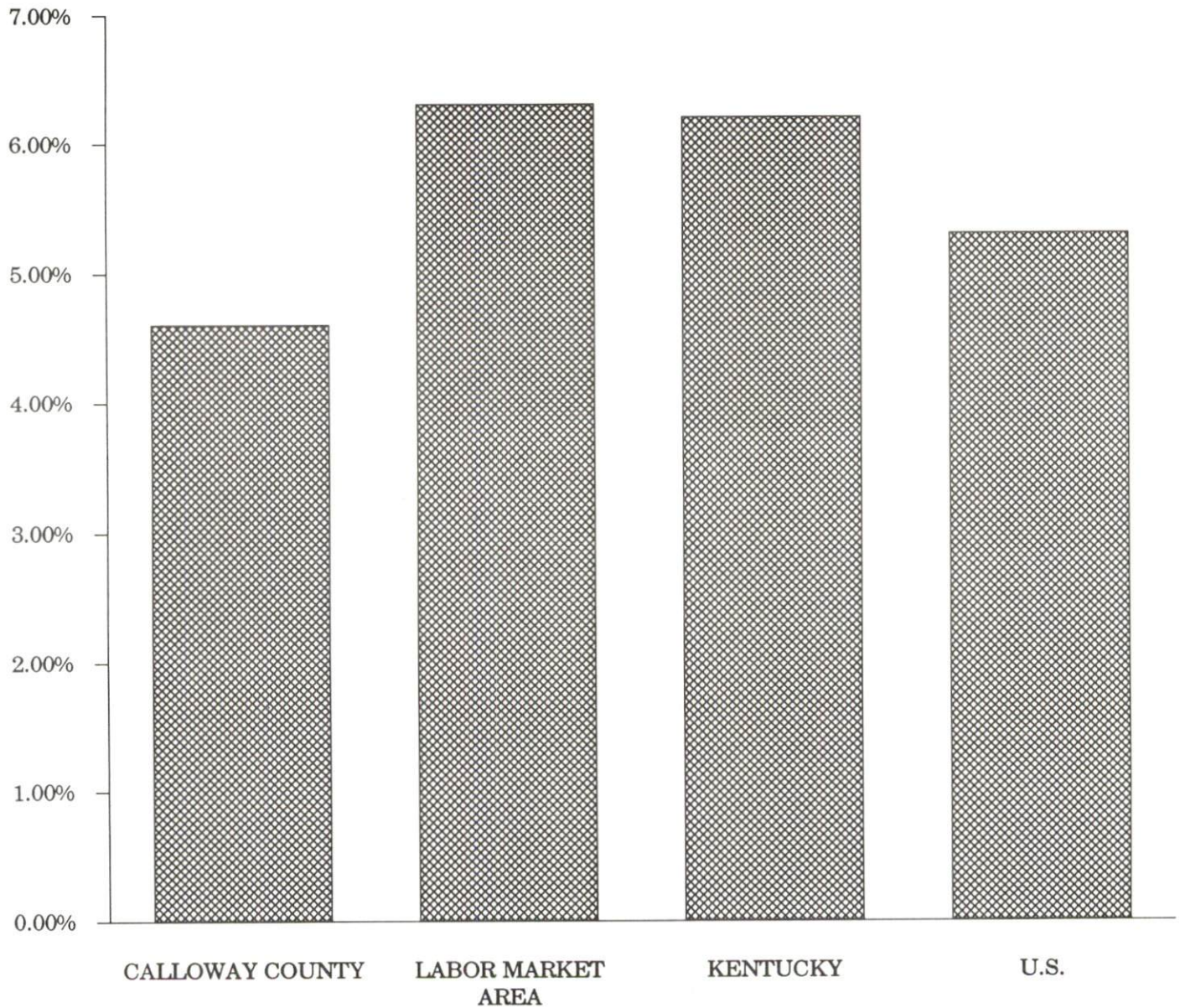
Sources: Kentucky Cabinet for Human Resources, Kentucky Labor Supply Estimates by County, 1989. Kentucky Cabinet for Economic Development, Future Labor Supply Becoming 18 Years of Age, 1990 thru 1994.

LABOR FORCE CHARACTERISTICS OF RESIDENTS, 1989

	Calloway County	Labor Market Area
Civilian Labor Force	15,749	47,766
Employment	15,029	44,755
Unemployment	720	3,011
Rate of Unemployment (%)	4.6	6.3

Source: Kentucky Cabinet for Human Resources, Kentucky Labor Force Estimates, Annual Averages, 1989.

UNEMPLOYMENT RATES
1989

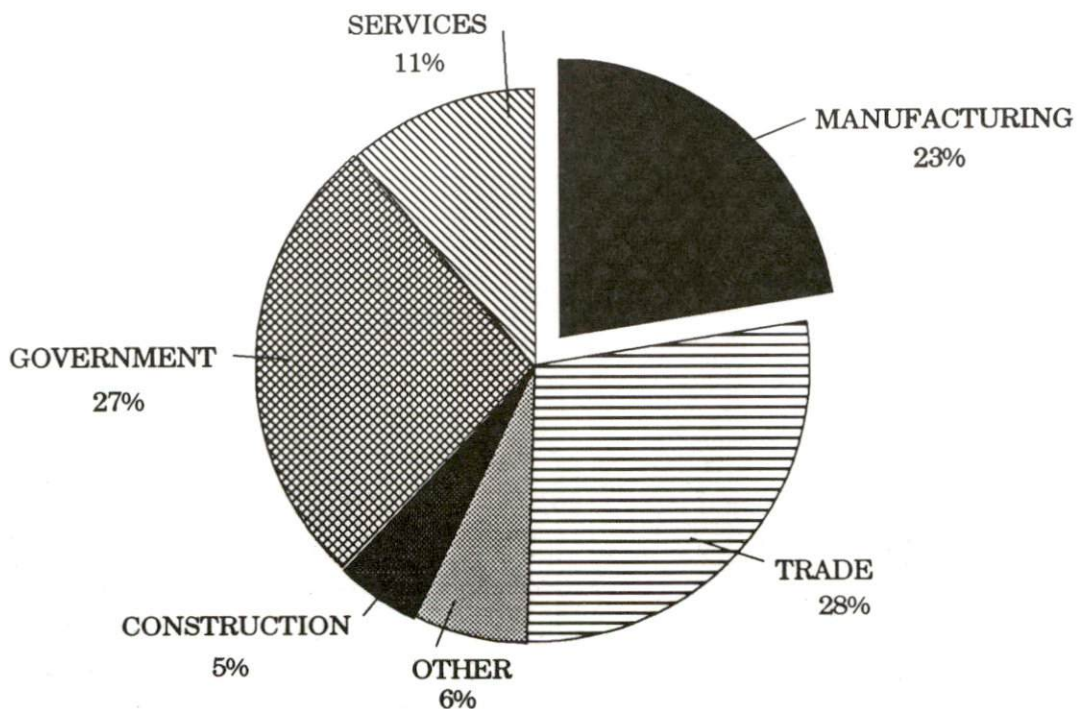


SELECTED COMPONENTS OF NONAGRICULTURAL EMPLOYMENT
BY PLACE OF WORK, 1989

	Calloway County	Labor Market Area
All Industries (total)	10,494	32,433
Manufacturing	2,368	10,308
Wholesale & Retail Trade	2,955	7,425
Services	1,138	3,896
State/Local Government	2,795	5,793
Contract Construction	556	2,078

Note: Excludes domestic workers, railway workers, certain nonprofit corporations, majority of federal government workers, and self-employed workers.
Source: Kentucky Cabinet for Human Resources, Average Monthly Workers Covered by Kentucky Unemployment Insurance Law, 1989.

CALLOWAY COUNTY

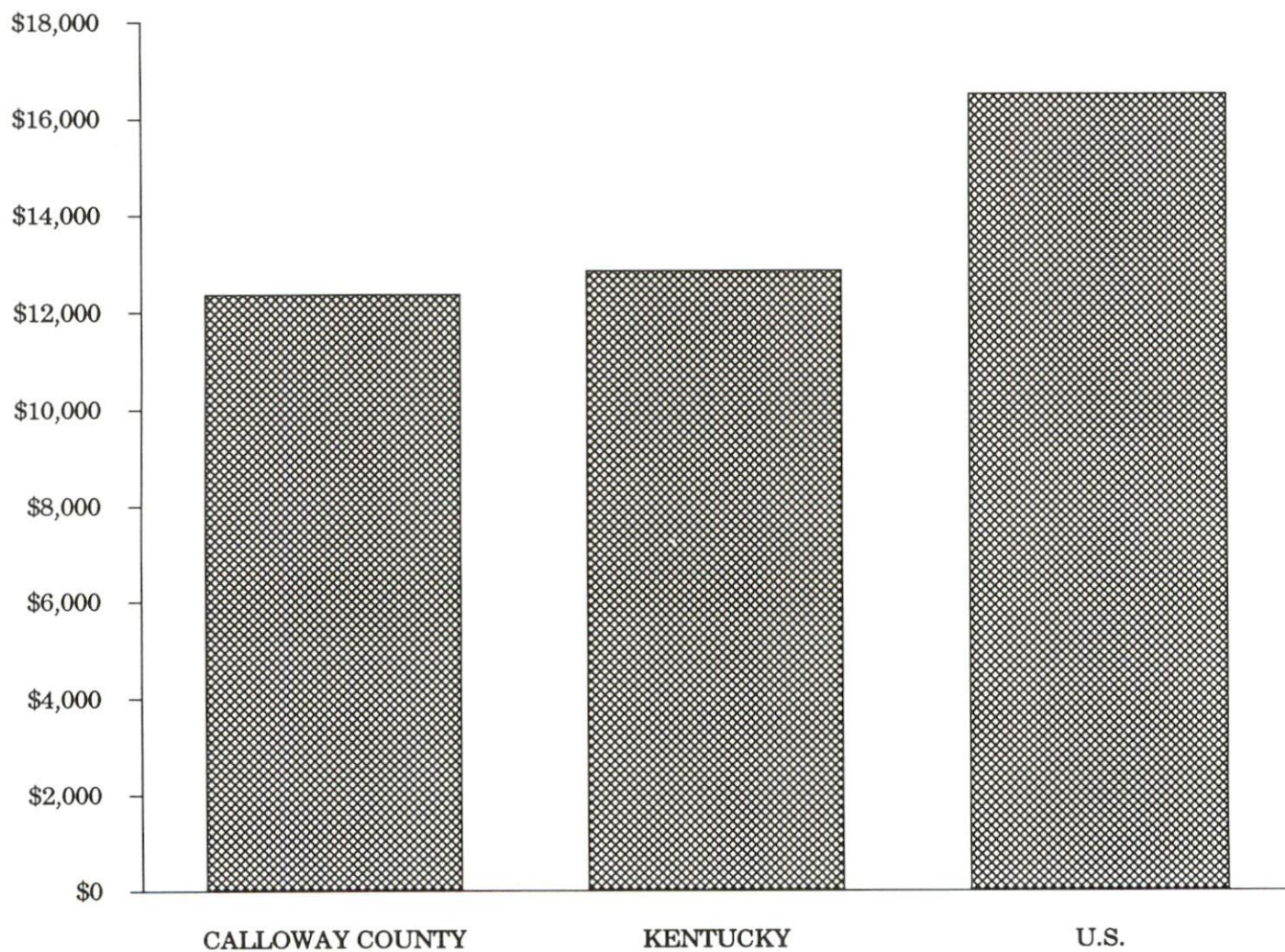


PER CAPITA PERSONAL INCOME

Area	1984	1988	Percent Change
Calloway County	\$9,961	\$12,343	23.9
Labor Market Area Range	\$9,961 - \$10,894	\$12,343 - \$12,997	-
Kentucky	\$10,411	\$12,830	23.2
U.S.	\$13,116	\$16,490	25.7

Sources: U.S. Bureau of Economic Analysis, Kentucky Economic Information System, April 1990.

PER CAPITA PERSONAL INCOME
1988



AVERAGE PLACEMENT WAGES

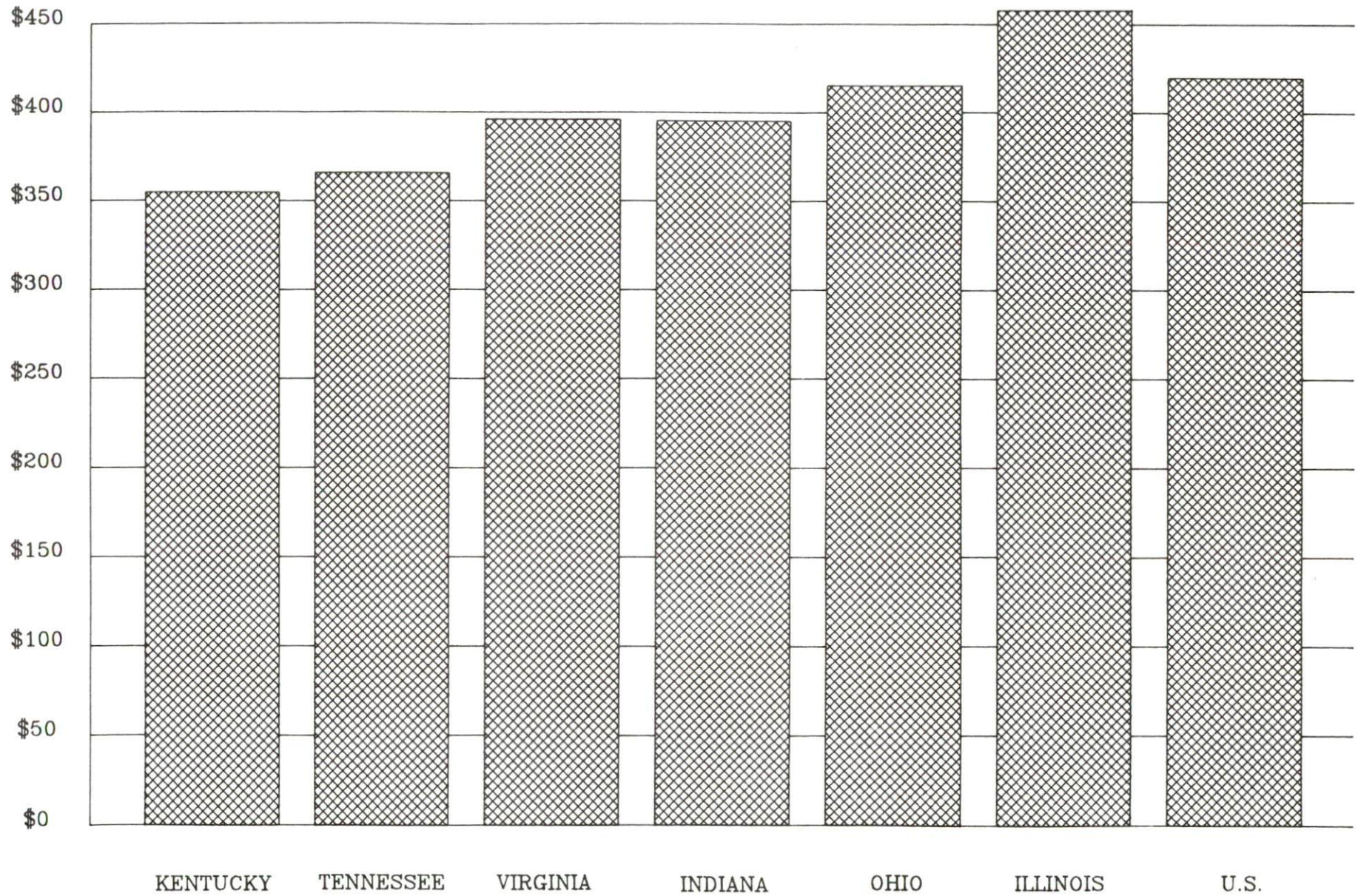
Calloway County is served by the Mayfield local office of the Kentucky Department for Employment Services. The focus of the following data is on job placements made by the Mayfield local office and may therefore be used as an indicator of the wages which employers in the area pay new employees. During the twelve months which ended on June 30, 1989, the local employment office filled 2,843 job openings in various occupational categories. The average hourly wage for selected occupational categories were:

<u>OCCUPATIONAL CATEGORY</u>	<u>NUMBER OF PLACEMENTS</u>	<u>AVERAGE WAGE(\$)</u>
All Occupations	2,843	4.48
Clerical	330	3.67
Sales	33	4.25
Services (excluding domestic)	326	3.43
Agricultural, Fishery, Forestry, etc.	18	4.32
Processing	75	6.04
Machine Trades	51	5.80
Bench Work	1,452	4.54
Structural	206	5.55
Motor Freight/ Transportation	36	5.04
Packaging and Materials Handling	246	4.35
Other	3	8.37

The Mayfield local office also serves Fulton, Graves, and Hickman Counties. The above occupational categories are taken from the Dictionary of Occupational Titles published by the U.S. Department of Labor.

Source: Kentucky Cabinet for Human Resources, Department for Employment Services.

AVERAGE WEEKLY WAGES OF WORKERS COVERED BY
UNEMPLOYMENT INSURANCE - 1988



AVERAGE WEEKLY WAGES BY INDUSTRY
BY PLACE OF WORK, 1988

	Calloway County	Kentucky (State- Wide)	Tennessee	Virginia
All Industries	\$302.02	\$352.31	\$363.12	\$392.56
Mining & Quarrying	0	603.27	495.85	596.88
Contract Construction	308.73	380.71	394.27	422.27
Manufacturing	330.99	464.92	416.73	452.60
Transportation, Communications & Public Utilities	430.97	468.17	485.13	554.17
Wholesale & Retail Trade	217.01	238.88	N/A	N/A
Finance, Insurance & Real Estate	288.36	401.17	269.27	466.23
Services	312.54	298.98	343.48	391.67
State/Local Government	349.10	377.81	403.21	457.00
	<u>Indiana</u>	<u>Ohio</u>	<u>Illinois</u>	<u>U. S.</u>
All Industries	\$392.63	\$411.08	\$454.10	\$416.33
Mining & Quarrying	635.77	579.73	674.62	660.40
Contract Construction	449.87	465.46	584.10	469.85
Manufacturing	532.06	569.98	555.83	517.62
Transportation, Communications & Public Utilities	502.69	519.17	584.83	542.33
Wholesale & Retail Trade	N/A	N/A	N/A	N/A
Finance, Insurance & Real Estate	406.58	444.33	579.88	532.52
Services	317.98	348.48	402.38	384.31
State/Local Government	395.31	428.10	453.12	442.71

N/A Not Available.

Note: The average weekly wage for each category includes the salaries and wages of all persons working for that type business. For example, the manufacturing category includes both production workers and administrative personnel. Excludes domestic workers, railway workers, certain nonprofit corporations, majority of federal government workers, and self-employed workers.

Source: Kentucky Cabinet for Human Resources, Average Weekly Wages of Workers Covered by Kentucky Unemployment Insurance Law, 1988. U.S. Department of Labor, Bureau of Labor Statistics, Average Annual Pay by State and Industry, August 29, 1989.

EXISTING INDUSTRY

MURRAY MANUFACTURING FIRMS,
THEIR PRODUCTS AND EMPLOYMENT

<u>Firm</u> <u>(Establishment date)</u>	<u>Product</u>	<u>1989</u> <u>Average Employment</u>
Briggs & Stratton Corporation (1985)	Lawn mower engines	530
Ellis Popcorn Company, Inc. (1950)	Popcorn	42
Falwell, Inc. (1977)	Wood furniture, millwork	2
Fisher Price (1973)	Toys	1,000
Fitts Block & Ready Mix Company, Inc. (1945)	Ready mix concrete, concrete block	19
Gibson Ham, Inc. (1946)	Country hams, fresh meats, frozen vegetables	5
Hutson Industries (1928)	Fertilizer blending	23
Inovative Printing and Graphics (1975)	Job printing	10
Interstate Filter Supply, Inc. (1967)	Cloth oil filter cartridges, oil filters	5
Jerry's Custom Kitchen Cabinets and Custom Woodworking (1989)	Kitchen cabinets	8
Kenlake Foods (1982)	Salted nut products, gelatin and pudding mixes, drink powders and concentrates	120
Lassiter Plaster Company, Inc. (1920)	Pre-fab wall panels	105
Murray Fabrics, Inc. (1955)	Knitted cuffs, surgical products, and tubing	19
The Murray Ledger & Times, Murray Newspapers, Inc. (1879)	Newspaper	38
Murray Mold & Die Company (1985)	Precision machining, aluminum die cast and plastic injection molds, metal stamping dies	5
Printing Services & Supplies (1964)	Commercial printing	16
Redmon Stake Company (1969)	Christmas tree stands, wood stakes	3
Ryan Milk Company (1929)	Yogurt, coffee creamers, sterile creams and sour cream	150

(Continued)

<u>Firm</u> <u>(Establishment date)</u>	<u>Product</u>	<u>1989</u> <u>Average Employment</u>
Safeguard America, Inc. (1965)	Safety apparel, gloves	75
Thornton Tile & Marble, Inc. (1971)	Cultured marble vanity tops, bathtubs, and thresholds	10
Vanderbilt Chemical Corporation (1969)	Industrial chemical additives	70
Jack Wallis Stained Glass & Doors (1971)	Stained glass, wood doors and entryways	6
York Spring Company (1970)	Metal springs	10

Sources: Kentucky Cabinet for Economic Development, Division of Research and Planning.

LABOR ORGANIZATIONS IN MANUFACTURING FIRMS

<u>Union</u>	<u>Representing works at:</u>
Oil, Chemical and Atomic Workers International Union, AFL-CIO	Vanderbilt Chemical Corporation
United Food and Commercial Workers International Union, AFL-CIO	Ryan Milk Company

SELECTED INDUSTRIAL SERVICES

<u>Types of Services</u>	<u>Location</u>	<u>Mileage from Murray</u>
Custom Data Processing	Paducah, Kentucky	49
Custom Plastics Producers	Fulton, Kentucky	35
Electric Motor Repair	Mayfield, Kentucky	21
Grinding, Precision & Tool	Mayfield, Kentucky	21
Heat Treating Facilities	Nashville, Tennessee	122
Industrial Equipment & Supplies	Mayfield, Kentucky	21
Industrial Gases	Paducah, Kentucky	49
Industrial Waste Removal	Paducah, Kentucky	49
Machine Shops, Tool & Die	Murray, Kentucky	-
Metal Castings	Elkton, Kentucky	77
Metal Finishers	Paducah, Kentucky	49
Metal Service Centers	Hopkinsville, Kentucky	57
Millwrights	Hopkinsville, Kentucky	57
Public Warehouse Facilities	Murray, Kentucky	-

Sources: Kentucky Cabinet for Economic Development, Kentucky Directory of Selected Industrial Services, 1987; Division of Research and Planning.

TRANSPORTATION

Highways

Murray is served directly by U.S. Highway 641 and Kentucky Highways 94 and 121. U.S. Highway 641, Kentucky Highway 121, and Kentucky Highway 94 (northeast of Murray) are "AAA"-rated (80,000-pound gross load limit) trucking highways. Kentucky Highway 94 (west of Murray) is a "AA"-rated (62,000-pound gross load limit) trucking highway.

The Purchase Parkway, a multi-lane toll road, is 19 miles north of Murray via U.S. Highway 641, or 23 miles northwest of Murray via Kentucky Highway 121.

Interstate 24, a major east-west highway, is 27 miles north of Murray via U.S. 641 and the Purchase Parkway.

HIGHWAY MILES FROM MURRAY, KENTUCKY, TO SELECTED MARKET CENTERS

City	Highway Miles	City	Highway Miles
Atlanta, GA	363	Los Angeles, CA	1,956
Baltimore, MD	797	Louisville, KY	225
Birmingham, AL	309	Nashville, TN	122
Chicago, IL	406	New Orleans, LA	547
Cincinnati, OH	326	New York, NY	976
Cleveland, OH	573	Pittsburgh, PA	604
Detroit, MI	584	St. Louis, MO	214
Knoxville, TN	300		

Note: Mileage computations are via the best interstate or primary highways, not necessarily the most direct route of travel.

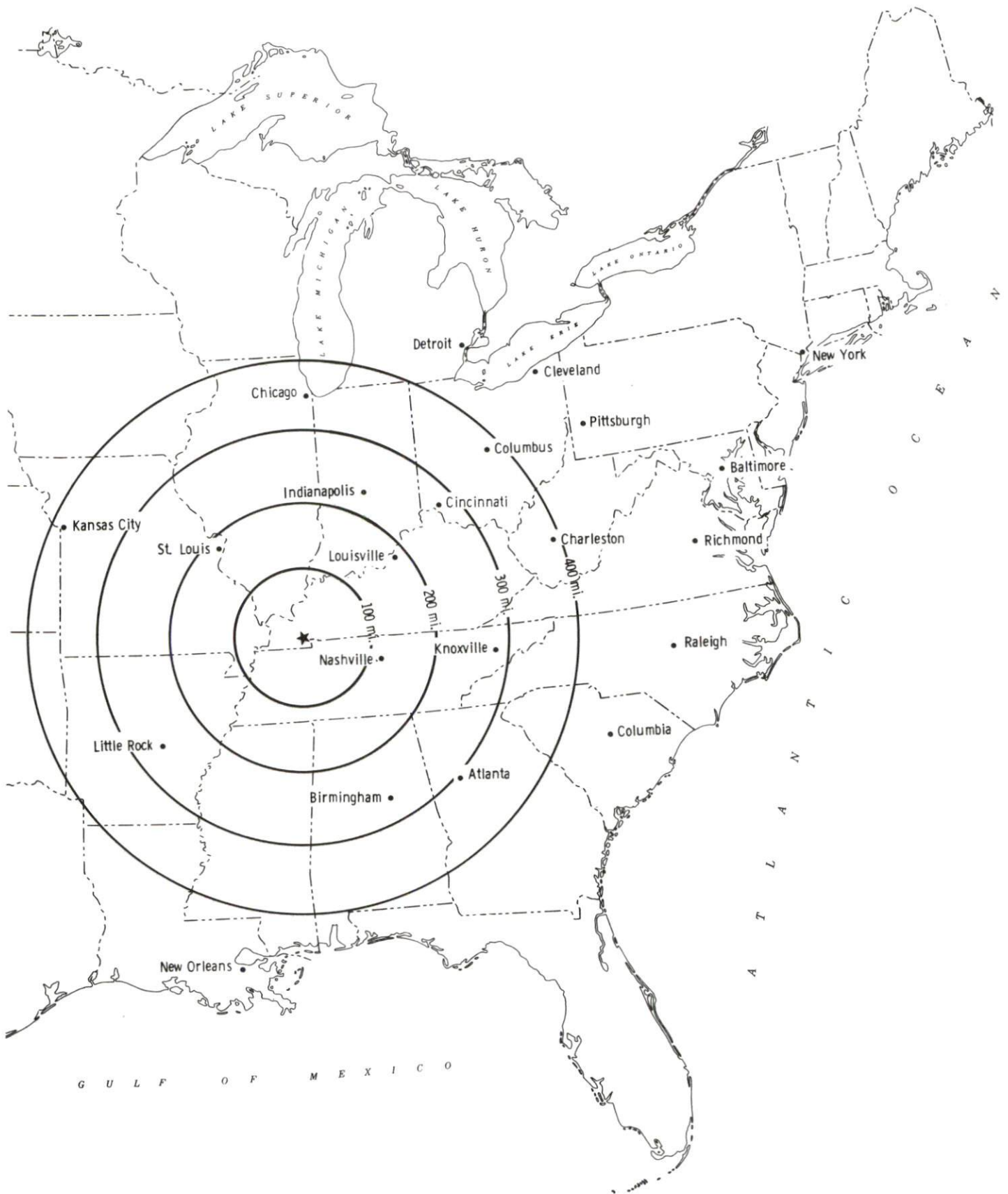
Sources: Rand McNally Deluxe Motor Carriers' Road Atlas, 1989. Official Kentucky Mileage Map, 1980.

Truck Service

There are currently twenty-three common carrier trucking companies that provide interstate and/or intrastate service to Murray.

Source: American Motor Carrier Directory, Fall 1990.

Selected Market Centers



Rail

K.W.T. Railway, Inc. provides branch line service to Murray. The nearest piggyback facilities are provided by Paducah and Louisville Railway at Paducah, 49 miles northeast of Murray.

For details on routing, schedules, rates, and services contact:

Manager
K.W.T. Railway, Inc.
908 Depot Street
Paris, Tennessee 38242
(901) 642-7942

The J & J Railroad is a locally-owned company which connects with K.W.T. Railway at Murray. J & J Railway operates one line approximately 11 miles in length between Murray and Hardin, Kentucky. For further information on the J & J Railroad contact:

J & J Railroad
Box 131
Hardin, Kentucky 42048
(502) 437-4102

Air

Local

Location:	Murray-Calloway County Airport (Kyle-Oakley Field) 5 miles northwest of Murray
Runways:	One paved
Length:	5,000 feet
Traffic Control:	Wind sock
Lighting:	Rotating beacon and radio control runway lighting system
Services:	80 and 100 octane and jet fuel, hangar, tie-down, charter service, agricultural service, flight instruction, maintenance and repair
Air Freight Service:	Charter air freight services must be arranged

The Murray-Calloway County Airport plans to install a localizer landing system and extend the runway length by at least 500 feet in 1991.

Nearest Scheduled Commercial Airline Service

Location: Nashville Metropolitan Airport
6 miles southeast of Nashville, Tennessee;
128 miles southeast of Murray

Air Service: American, Delta, Eastern, Northwest, PanAm, TWA,
Southwest, United, USAir, American Eagle,
ComAir

Daily Arrivals
& Departures: 470

Commuter air carrier service is provided by Northwest Air Link, TransWorld Express, and American Eagle at Barkley Regional Airport, which is located 6 miles west of Paducah, Kentucky; 49 miles northwest of Murray.

Water

The Port of Murray-Calloway County is located on Kentucky Lake, approximately 12 miles from Murray. This large, privately-owned port is owned by the Hutson Company, Inc., and Hutson Grain, Inc., and is operated by the Hutson Company and the Pillsbury Company. The port can accommodate the unloading of bulk commodities and the loading of grain simultaneously.

UTILITIES

Electricity

Company serving Murray and parts of Calloway County - Murray Electric System

Source of power - Tennessee Valley Authority
For industrial rates contact:

Murray Electric System
P.O. Box 1095
401 Olive Street
Murray, Kentucky 42071

and/or

South Kentucky Industrial Development
Association, Inc.
P.O. Box 726
Hopkinsville, Kentucky 42240
(502) 885-5392

Company serving majority of Calloway County - West Kentucky Rural Electric Cooperative Corporation

Source of power - Tennessee Valley Authority
For industrial rates contact:

South Kentucky Industrial Development
Association, Inc.
P.O. Box 726
Hopkinsville, Kentucky 42240
(502) 885-5392

and/or

West Kentucky Rural Electric
Cooperative Corporation
1218 West Broadway
P.O. Box 589
Mayfield, Kentucky 42066
(502) 247-1321

Natural Gas

Company serving Murray - Murray Natural Gas System

Source of supply - Texas Gas Resources Corporation
For rates and supplies contact:

Murray Natural Gas System
P.O. Box 466
Murray, Kentucky 42071
(502) 753-5631

Public Water Supply

Company serving Murray - Murray Water and Wastewater System
P.O. Box 6
Murray, Kentucky 42071
(502) 762-0330

Source - Five deep wells (pumping capacity of 3,000 gpm each)
Treatment plant capacity - 5,000,000 gallons per day
Average daily consumption - 3,131,000 gallons
Peak daily consumption - 4,120,000 gallons
Storage capacity - 3,250,000 gallons
Water pressure - 75 psi to 85 psi

The Murray Water System installed 24-inch transmission mains in the summer of 1989 at a cost of \$423,057. Future plans include construction of a 1,000,000 gallon storage tank in 1993 at a cost of \$500,000 and construction of a new water plant in 1995, costing \$5,000,000.

Raw Water

Surface water sources - Kentucky Lake, West Fork Clarks River and East Fork Clarks River
Average discharge - West Fork Clarks River near Brewers, Kentucky - 95.5 cfs (15 years, USGS)
Expected ground water yield - 5 to 50 gpm along the eastern edge of the county bordering Kentucky Lake, 500 to 1,000 gpm in the remainder of the county

Sewerage

Company serving Murray - Murray Water and Wastewater System
P.O. Box 6
Murray, Kentucky 42071
(502) 762-0330

Design capacity - 3,500,000 gallons per day
Average daily flow - 3,000,000 gallons
Type of treatment - Secondary
Treated effluent discharged into - Bee Creek

The Murray Wastewater System is in the middle of a sewer rehabilitation project. Phase one, consisting of rehabilitating 9,000 lineal feet of lines, was completed in Fall, 1988, costing \$204,000. Phase two will rehabilitate 10,000 lineal feet of lines and will be completed in 1991, costing \$250,000.

Plans are being made for wastewater plant improvements of a new oxidation ditch, clarifier, and more sludge handling capabilities in 1993 at a cost of \$4,000,000.

CLIMATE

Calloway County

Temperature

Normal (30-year record)	59.20 degrees
Average annual 1988	59.00 degrees
Record highest, July 1952 (49-year record)	107.00 degrees
Record lowest, January 1985 (49-year record)	-17.00 degrees
Normal heating degree days (30-year record) (Heating degree day totals are the sums of negative departures of average daily temperatures from 65 degrees F.)	3,756

Precipitation

Normal (30-year record)	48.49 inches
Mean annual snowfall (47-year record)	11.00 inches
Total precipitation 1988	31.41 inches
Mean number days precipitation (.01 inch or more) (47-year record)	118.50
Mean number days thunderstorms (47-year record)	53.40

Prevailing winds (through 1963)

South

Relative Humidity (23-year record)

Midnight	79 percent
6 a.m.	84 percent
Noon	57 percent
6 p.m.	61 percent

Source: U.S. Department of Commerce, Environmental Science Services Administration, Climatological Data, 1988. Station of record: Nashville, Tennessee.

LOCAL GOVERNMENT

Structure

The city of Murray is served by a mayor and 12 council members. The mayor is elected to a four-year term and the council members serve two-year terms. Calloway County is served by a county judge/executive and four magistrates. The judge/executive and magistrates are elected to four-year terms.

Planning and Zoning

City agency - Murray Planning Commission
Zoning enforced - Within city of Murray
Subdivision regulations enforced - Within city limits and 4 miles from the intersection of 12th and Main Streets
Local codes enforced - Building and housing
Mandatory state codes enforced - Kentucky Plumbing Code, National Electric Code, Kentucky Boiler Regulations and Standards, Kentucky Building Code (modeled after BOCA code)

Local Fees and Licenses

The city of Murray levies a business license fee ranging from \$16.50 to \$440 per year, depending on the type of business. The city also levies an annual vehicle sticker fee of \$35 for automobiles, \$10 for motorcycles, and \$20 for trucks over 1.5 tons. The city also levies an alarm monitoring fee on businesses of \$120 annually for each alarm.

State and Local Property Taxes

All property in Kentucky, except items exempted by the state constitution, is taxed by the state. Property which also may be taxed by local jurisdictions includes land and buildings, finished goods inventories, automobiles, trucks, office furniture and office equipment. Local taxing jurisdictions in Kentucky include counties, cities, and school districts.

All property in Kentucky is assessed at 100 percent of fair cash value.

COMBINED STATE AND LOCAL RATES PER \$100 VALUATION, 1989

	City of Murray/ Murray Independent School District	City of Murray/ Calloway County School District	Unincorporated Calloway County
Land and Buildings	\$1.0977	\$0.9217	\$0.5410
Manufacturing			
Machinery	0.1500	0.1500	0.1500
Pollution Control			
Equipment	0.1500	0.1500	0.1500
Inventories			
Raw Materials	0.0010	0.0010	0.0010
Goods in Process	0.0010	0.0010	0.0010
Finished Goods	0.9117	0.7357	0.3550
Automobiles & Trucks	1.3820	1.1840	0.8040
Other Tangible			
Personal Property	1.3607	1.1847	0.8040
Intangibles (Accounts receivable*, money in hand, stock, notes, bonds)	0.2500	0.2500	0.2500
Goods Stored in Public Warehouses in Transit Status	0.0010	0.0010	0.0010
Private Leaseholds in Industrial Revenue Bond Financed Facilities	0.0150	0.0150	0.0150

* Accounts receivable are taxed at 85 percent of face value, for an effective rate of \$0.2125 per \$100 valuation.

EDUCATION

Public Schools

	Murray Independent	Calloway County
Total Enrollment (Fall, 1989)	1,322	3,018
Accreditation	Southern Association of Colleges and Schools	Southern Association of Colleges and Schools
Pupil-Teacher Ratio (1988-89)	15.6-1	18.2-1
Percent High School Graduates to College (1988-89)	81.9	58.3
Expenditures Per Pupil (1988-89)	\$3,089.66	\$2,501.06

Area Colleges and Universities

<u>Name</u>	<u>Location (Miles distant)</u>	<u>Enrollment (Fall, 1989)</u>
Murray State University	Murray, Kentucky	8,013
Bethel College	McKenzie, Tennessee (38)	674
Paducah Community College	Paducah, Kentucky (49)	2,544
University of Tennessee at Martin	Martin, Tennessee (51)	5,088
Hopkinsville Community College	Hopkinsville, Kentucky (57)	1,877

Murray State University

Established in 1922, Murray State University is one of eight tax-assisted, co-educational state universities in Kentucky, with an enrollment of approximately 8,000 students and a teaching faculty of about 350. Some 135 undergraduate programs of study, and a number of graduate offerings, are available in six academic colleges -- Business and Public Affairs, Education, Fine Arts and Communication, Humanistic Studies, Industry and Technology, and Science.

Known as a student-centered university where cost is affordable and emphasis is on academic excellence, Murray State is accredited by the Southern Association of Colleges and Schools. In addition, 34 of its academic programs have earned accreditations from 11 different national accrediting agencies.

The academic strength of Murray State is also reflected in an Honors Program; the Presidential Scholars Program, which provides full, four-year scholarships based on academic achievement and leadership to 12 freshmen each year; and a rapidly-growing program of international studies, which now offers exchange opportunities with universities on five other continents and in Central America.

Through its Center for Continuing Education, Murray State continues to meet the needs of the adult or non-traditional students. A new bachelor of independent studies (BIS) degree program, the first of its kind in Kentucky, was introduced in 1986. Off-campus offerings, night and weekend classes and correspondence in television courses have also been expanded with the adult student in mind. The Small Business Development Center meets needs of businesses in the area with assistance in starting and strengthening new and existing businesses. Seminars and programs offered by the Center focus on improving managerial skills, enhancing supervisory skills and expanding computer skills.

Murray State was designated by the Kentucky Council on Higher Education in the spring of 1984 for both a Center of Excellence for Ecosystems Studies and an Endowed Chair for Applied Ecosystem Ecology. Construction was completed on the campus in November, 1990, for the \$12.5 million Martha Layne Collins Center for Industry and Technology. It houses several nationally-accredited engineering technology and related programs offered in the College of Industry and Technology.

Recognized as a cultural center for the region, Murray State University offers public opportunities to attend lectures, recitals, concerts, musical and theatrical productions, and art exhibits. The campus is the home of a National Public Radio-affiliated 100,000-watt FM station which has a listening audience in five states.

A major point of interest on the 232-acre main campus in residential Murray is the National Museum of the Boy Scouts of America, which is highlighted by a variety of participatory exhibits, historical scouting memorabilia and a collection of original oil paintings by Norman Rockwell. The oldest building on the campus houses the Wrather West Kentucky Museum, which reflects the cultural heritage of the geographic area surrounding Murray and Western Kentucky.

Vocational Training

Vocational training is available at both the state vocational-technical schools and the area vocational education centers. The state vocational-technical schools are post-secondary institutions. The area vocational education centers are designed to supplement the curriculum of high school students. Both the state vocational-technical schools and the area vocational education centers offer evening courses to enable working adults to upgrade current job skills.

Arrangements can be made to provide training in the specific production skills required by an industrial plant. Instruction may be conducted either in the vocational school or in the industrial plant, depending upon the desired arrangement and the availability of special equipment.

Bluegrass State Skills Corporation

The Bluegrass State Skills Corporation, an independent public corporation created and funded by the Kentucky General Assembly, provides programs of skills training to meet the needs of business and industry from entry level to advanced training, and from upgrading present employees to retraining experienced workers.

The Bluegrass State Skills Corporation is the primary source for skills training assistance for a new or existing company. The Corporation works in partnership with other employment and job training resources and programs, as well as Kentucky's economic development activities, to package a program customized to meet the specific needs of a company.

<u>Vocational School</u>	<u>Location (Miles distant)</u>	<u>Cumulative Enrollment 1988-1989</u>
West Kentucky State Vocational- Technical School	Paducah, Kentucky (49)	1,014
Murray Area Vocational Education Center	Murray, Kentucky	238

OTHER LOCAL FACILITIES

Local Medical Personnel

Physicians - 50
Dentists - 20

Hospitals

<u>General Hospital</u>	<u>Location</u>	<u>Beds</u>
Murray-Calloway County Hospital	Murray	216

Medical Staff - 43 physicians, 122 registered nurses, 74 licensed practical nurses

Other Medical Facilities and Services

Calloway County Health Department
Medical Arts Building
Murray-Calloway County Hospital
Ambulance Service
Calloway County Fire-Rescue, Inc.

Banks and Savings and Loan Associations

Bank of Murray
Peoples Bank of Murray
Hopkinsville Federal Savings Bank
Republic Savings Bank

Newspapers

The Murray Ledger and Times (Daily)
The Murray State News (Weekly)

Telephone Service

South Central Bell

RECREATION

Local

The city of Murray has a year-round supervised recreational program, with organized total-youth sports for children of the city and county. The city has a 100-acre park, a 20-acre park, two mini parks, three swimming pools (Olympic, training, and infant), tennis courts, nine ball fields, two soccer fields, six covered pavilions, picnic areas, bike and hiking trails, and playground equipment available for public use. A new golf course is available which is ranked as one of the finest in the country.

Recently, the Woodmen of the World Youth Camp, a private recreation club, purchased the Murray Tennis Center for utilization during their week-long camp. They hope to expand to a two-week program next year. This camp includes activities such as tennis, golf, and archery.

Among youth sports programs offered by the city of Murray are baseball, soccer, basketball, boxing, karate, football, and swimming. In addition, four soccer fields have been added.

Murray State University has 16 lighted tennis courts; six racquetball courts; a lighted recreation field for softball, soccer, etc.; three indoor basketball courts; weight rooms; an indoor jogging track; parcourse; outdoor track; gymnastic room; several open playing fields; bowling lanes; outdoor recreation equipment rentals; and an indoor swimming pool. The Murray State University Racers are perennial challengers for major honors in the eight men's and five women's NCAA Division I intercollegiate sports in the Ohio Valley Conference.

Murray State University's Miller Memorial Golf Course features a practice range, chipping green, putting green, a PGA Pro, and 18 memorable holes of golf at an affordable price. Murray State also provides instruction in tennis, golf, racquetball, bowling, swimming, aerobics, weight training, karate, canoeing, sailing, caving, backpacking, rappelling, and other activities.

A new nine-hole executive par-3 golf course with softball and baseball batting cages was recently opened.

Area (Within 50 miles)

Murray's location in the heart of Kentucky's Land of the Lakes region makes it an excellent recreation area. The city is located near two of the largest inland lakes in America - Kentucky Lake and Lake Barkley. The lakeland area offers numerous recreational facilities for water sports, fishing, boating and camping.

Located around this lakeland area are three of the state's finest resort parks - Kenlake State Resort Park, Lake Barkley State Resort Park, and Kentucky Dam Village Resort Park.

COMMUNITY IMPROVEMENTS

Recent

Murray re-certified as a Kentucky Certified City in 1989, and is distinguished as a gold award winner recognizing six consecutive years of certification. Re-certification is based on achievement in the following areas: existing industry assistance, small business assistance, educational resources, and community development factors of health care, public safety, arts and culture, recreation, governmental awareness and resources. The Certified Cities Program is sponsored by the Kentucky Chamber of Commerce.

A new 40-acre industrial park was opened in 1990. The park is served by all utilities.

Construction was completed on the campus of Murray State University in November, 1990, for the \$12.5 million Martha Layne Collins Center for Industry and Technology. It houses several nationally-accredited engineering technology and related programs offered in the College of Industry and Technology.

Kentucky Highway 121 east of Murray was recently upgraded to a "AAA"-rated (80,000-pound gross load limit) trucking highway.

The Murray Water System installed 24-inch transmission mains in the summer of 1989 at a cost of \$423,057. Future plans include construction of a 1,000,000 gallon storage tank in 1993 at a cost of \$500,000 and construction of a new water plant in 1995, costing \$5,000,000.

The Murray-Kentucky Lake area was recently chosen as the number one rated retirement community in the United States by Rand McNally in the book "Retirement Places Rated".

Under Way

The Murray Wastewater System is in the middle of a sewer rehabilitation project. Phase one, consisting of rehabilitating 9,000 lineal feet of lines, was completed in Fall, 1988, costing \$204,000. Phase two will rehabilitate 10,000 lineal feet of lines and will be completed in 1991, costing \$250,000. Plans are being made for wastewater plant improvements of a new oxidation ditch, clarifier, and more sludge handling capabilities in 1993 at a cost of \$4,000,000.

Paschall Truck Lines is constructing a new truck terminal in Murray. The three-building complex is located on 17 acres of land adjacent to the Murray Industrial Park. Paschall Truck Lines, which is locally owned and operated, provides both interstate and intrastate service.

Planned

A new special events building is planned for Murray State University. This multi-purpose building will have 10,000 seat auditorium for basketball games, shows, and concerts, and recreational facilities including a swimming pool and jogging track. This project is expected to cost \$14,500,000.

A \$3,500,000 general renovation project is planned for the Murray State University Fine Arts Center. This project is expected to be completed in 1991.

A new community center is planned for Calloway County. The building will have an auditorium and office space available for various community organizations and is expected to cost \$300,000.

The Murray-Calloway County Airport plans to install a localizer landing system and extend the runway length by a least 500 feet in 1991.



KENTUCKY
Open for Business

Cabinet for Economic Development • Capital Plaza Tower
Frankfort, Kentucky 40601 • (502) 564-7140