

7-2000

Industrial Resources: Crittenden County - Marion

Kentucky Library Research Collections
Western Kentucky University, spcol@wku.edu

Follow this and additional works at: https://digitalcommons.wku.edu/crittenden_cty

 Part of the [Business Administration, Management, and Operations Commons](#), [Growth and Development Commons](#), and the [Infrastructure Commons](#)

Recommended Citation

Kentucky Library Research Collections, "Industrial Resources: Crittenden County - Marion" (2000). *Crittenden County*. Paper 1.
https://digitalcommons.wku.edu/crittenden_cty/1

This Report is brought to you for free and open access by TopSCHOLAR®. It has been accepted for inclusion in Crittenden County by an authorized administrator of TopSCHOLAR®. For more information, please contact topscholar@wku.edu.

Kentucky

Resources For Economic Development

Marion (Crittenden County)

July 2000

Albany
Barbourville
Ballard County
Bardstown • Booneville Berea
Bowling Green • Boyd & Greenup Counties
Bracken County • Brandenburg • Breckinridge
Brownsville • Bullitt County • Burkesville • Cadiz
Campbellsville • Campton • Carlisle • Carlisle County
Carrollton • Cave City • Clinton • Columbia • Corbin • Cynthiana
Danville • Dawson Springs • Edmonton • Elizabethtown • Estill County
Elliott County • Falmouth & Butler • Flemingsburg • Frankfort • Franklin
Frenchburg • Fulton County • Gallatin County • Georgetown • Grant County • Greensburg
Grayson & Olive Hill • Glasgow • Hancock County • Harlan County • Harrodsburg • Hart County
Hazard • Henderson • Henry County • Hodgenville • Hopkinsville-Christian County • Jackson County
Jackson • Knott County • LaGrange & Buckner • Lancaster • Lawrenceburg • Lebanon • Leitchfield-
Grayson County • Letcher County • Lexington • Liberty-Casey County • Logan County • Louisville
London • Louisa • Lyon County • Madisonville & Earlington • Manchester • Marshall County • Mayfield
Maysville • McCreary County • Marion • McLean County • Middlesboro & Pineville • Monticello • Morehead
Morgantown • Mt. Sterling • Mt. Vernon • Muhlenberg County • Murray • Nicholasville • Northern Kentucky
Ohio County • Owensboro • Owenton • Owingsville • Paducah • Paintsville • Paris • Pike County • Powell
Prestonsburg • Princeton • Radcliff • Richmond • Russell County • Scottsville • Shelbyville • Somerset
Springfield • Stamping Ground • Stanford-Lincoln County • Tompkinsville & Gamaliel • Taylorsville
Todd County • Union County • Vanceburg • Versailles • Webster County • West Liberty • Williamsburg
Winchester, Kentucky

Kentucky

Resources For Economic Development

Marion (Crittenden County)

July 2000



Prepared by
Kentucky Cabinet for Economic Development
Division of Research
in cooperation with
Crittenden County Economic Development Corporation
P.O. Box 381
Marion, KY 42064
(270) 965-9294

Kentucky Cabinet for Economic Development
Division of Research
500 Mero Street
2300 Capital Plaza Tower
Frankfort, KY 40601
Telephone: (502) 564-4886
Fax: (502) 564-3256
Email: econdev@mail.state.ky.us

Cost of printing paid from state funds.

TABLE OF CONTENTS

	Page
MARION, KENTUCKY – A RESOURCE PROFILE	1
LABOR MARKET STATISTICS	3
Population.....	3
Population Projections.....	3
Estimated Labor Supply	3
Labor Force Characteristics of Residents, 1998	4
Work Force Commuting Patterns, 1990	4
Selected Components of Nonagricultural Employment by Place of Work, 1997.....	4
Per Capita Personal Income.....	6
Average Placement Wages	6
Average Weekly Wages by Industry by Place of Work, 1998	7
EXISTING INDUSTRY	8
Marion Manufacturing Firms, Their Products and Employment.....	8
Recent Industrial Developments.....	8
Major Marion Supportive/Service Employers.....	8
Labor Organizations in Crittenden County.....	8
Selected Industrial Services – Within 50 Miles of Marion.....	9
TRANSPORTATION	10
Highways.....	10
Truck Service	10
Rail	12
Air.....	12
Water	13
UTILITIES	14
Electricity	14
Natural Gas.....	14
Public Water Supply	14
Sewerage	15
CLIMATE	16
LOCAL GOVERNMENT	17
Structure	17
Planning and Zoning.....	17
Local Fees and Licenses	17
Sales and Use Tax	17
State and Local Property Taxes	17
EDUCATION	19
Primary and Secondary Schools	19
Colleges and Technical Schools	19
OTHER LOCAL FACILITIES	22
RECREATION	23
APPENDIX A - DEFINITIONS	24

MARION, KENTUCKY – A RESOURCE PROFILE

Marion is located in the Western Kentucky fluorspar district of the Mississippian Plateaus area of extreme western Kentucky. Marion is located 64 miles southwest of Evansville, Indiana; 125 miles northwest of Nashville, Tennessee; 191 miles southwest of Louisville, Kentucky; and 179 miles southeast of St. Louis, Missouri. Marion had an estimated population of 3,442 in 1998.

Crittenden County is a well-dissected upland characterized by a variety of irregularly-shaped, sandstone-capped hills and ridges. The Ohio River forms the northwestern boundary of Crittenden County. Crittenden County covers a land area of 362 square miles and had an estimated 1999 population of 9,556 persons.

The Economic Framework – Crittenden County firms employed 2,223 people in 1997. Contract construction firms provided 33 jobs; manufacturing firms in the county reported 516 employees; wholesale and retail trade provided 554 jobs; 558 were employed in the service industry; and state and local government accounted for 363 jobs.

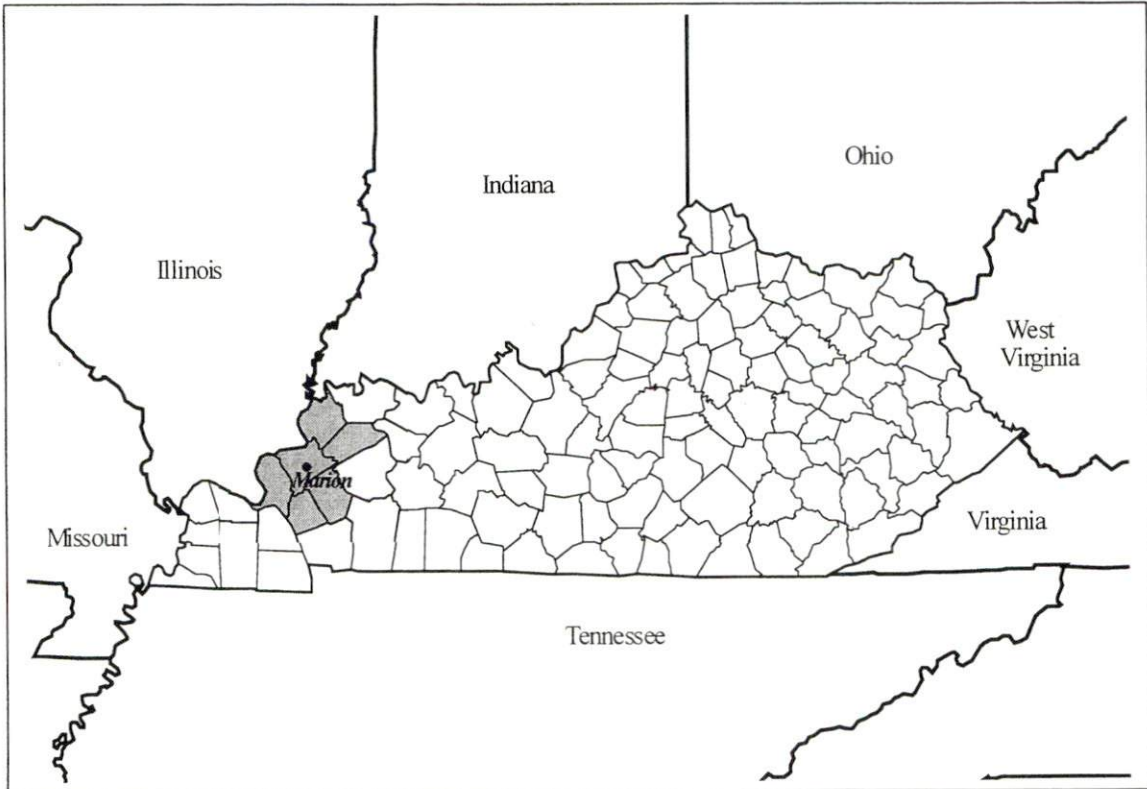
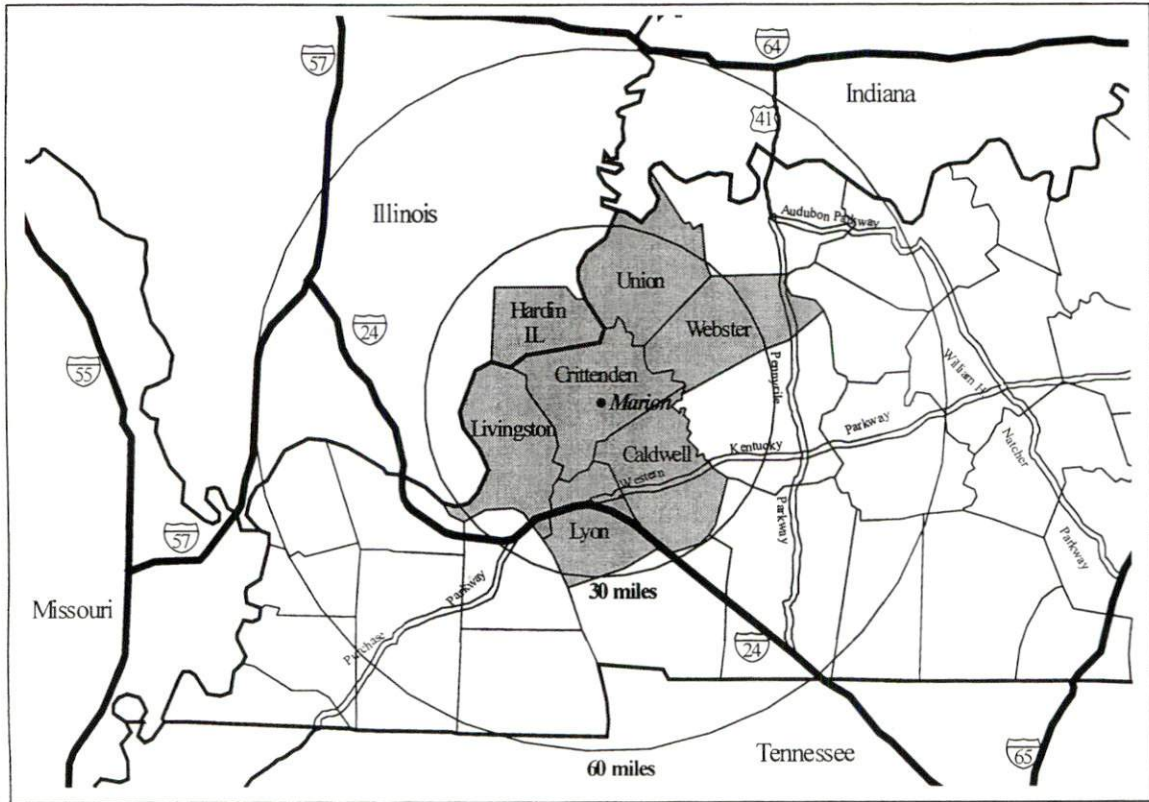
Labor Supply – There is a current estimated labor supply of 9,964 persons available for industrial jobs in the labor market area. In addition, from 2000 through 2004, approximately 5,468 young persons in the labor market area will become 18 years of age and potentially available for industrial jobs.

Transportation – Marion is served by U.S. 60 and 641, and Kentucky 91, all AAA-rated trucking highways. Interstate 24 is available 21 miles south of Marion via U.S. 641. Seventeen common carrier trucking companies provide interstate and/or intrastate service to Marion. The Marion Airport, two miles southwest of Marion, provides a 2,500-foot turf runway and the Sturgis Airport, 19 miles north of Marion, maintains two 5,000-foot paved runways. Scheduled commercial airline service is available at the Barkley Regional Airport near Paducah, 44 miles southwest; at Evansville Regional Airport in Evansville, Indiana, 68 miles northeast of Marion; and at Nashville International Airport, in Nashville, Tennessee 122 miles southeast of Marion.

Power and Fuel – Kentucky Utilities Company provides electric power to Marion and parts of Crittenden County. Crittenden County is also served by the Henderson-Union Electric Cooperative. Western Kentucky Gas Company provides natural gas service to Marion.

Education – Crittenden County School System provides primary and secondary education to Marion and Crittenden County. Three universities and four community colleges are located within 60 miles of Marion. Madisonville Community College offers several evening courses at Crittenden County High School. Madisonville Technical College in Madisonville, 39 miles east of Marion and Caldwell County Area Technology Center in Princeton, 22 miles southeast of Marion, each provide the nearest vocational training facilities.

Labor Market Area Maps



Note: To obtain detailed topographical and general highway maps contact Maps and Publications at 502-564-4715, or for industrial site maps contact the Site Evaluation Division at 502-564-7140.

LABOR MARKET STATISTICS

The Marion labor market area includes Crittenden County and the following additional counties: Caldwell; Livingston; Lyon; Union; Webster; and Hardin, IL.

Population

	<u>1980</u>	<u>1990</u>	<u>1998*</u>	<u>1999*</u>
Labor Market Area	76,425	73,815	75,386	75,329
Crittenden County	9,207	9,196	9,587	9,556
Marion	3,392	3,320	3,442	N/A

Note: * Population estimates. N/A – Data not available.

Source: U.S. Department of Commerce, Bureau of the Census.

Population Projections

	<u>2000</u>	<u>2010</u>	<u>2020</u>
Labor Market Area	75,981	77,295	77,869
Crittenden County	9,483	9,329	9,082

Source: University of Louisville, Urban Studies Center, State Data Center. Out-of-state counties within the labor market area computed by the Kentucky Cabinet for Economic Development.

Estimated Labor Supply

	<u>Available Labor, 1998</u>			<u>Under-employed</u>	<u>Future Labor Becoming 18 years of age 2000 through 2004</u>
	<u>Total</u>	<u>Unemployed</u>	<u>Potential Labor Supply</u>		
Labor Market Area	9,964	1,917	1,716	6,332	5,468
Crittenden County	1,161	267	235	660	670

Note: Unemployed – people not working but actively seeking work. Potential Labor Supply – represents the number of persons not in the labor force, but would like a job (based on national estimates). Underemployed – people employed in wholesale/retail trade and non-professional services. See Appendix for further explanation.

Sources: U.S. Department of Labor, Bureau of Labor Statistics. U.S. Department of Commerce, Bureau of the Census. Kentucky Cabinet for Economic Development, Future Labor Supply Becoming 18 Years of Age, 2000 through 2004.

Labor Force Characteristics of Residents, 1998

	<u>Crittenden County</u>	<u>Labor Market Area</u>
Civilian Labor Force	4,070	31,635
Employed	3,803	29,718
Unemployed	267	1,917
Unemployment Rate (%)	6.6	6.1

Source: U.S. Department of Labor, Bureau of Labor Statistics.

Work Force Commuting Patterns, 1990

Workers commuting into Crittenden County	389
Workers commuting out of Crittenden County	1,190
Workers residing and working in Crittenden County	2,280

Source: University of Louisville, State Data Center.

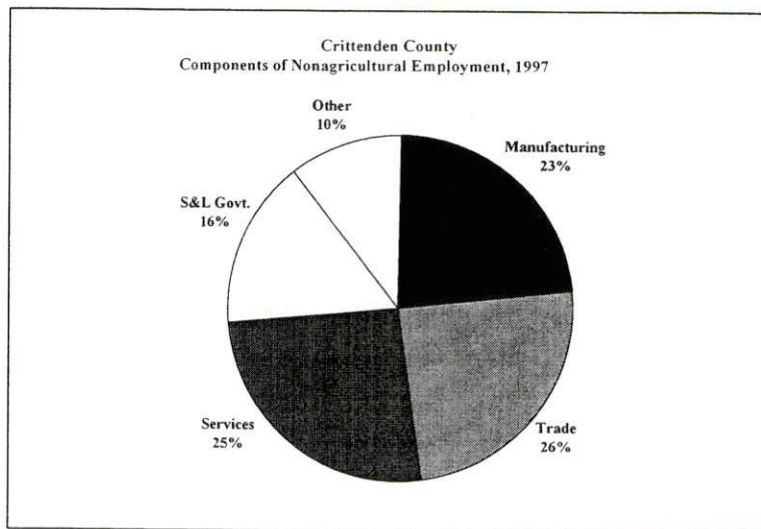
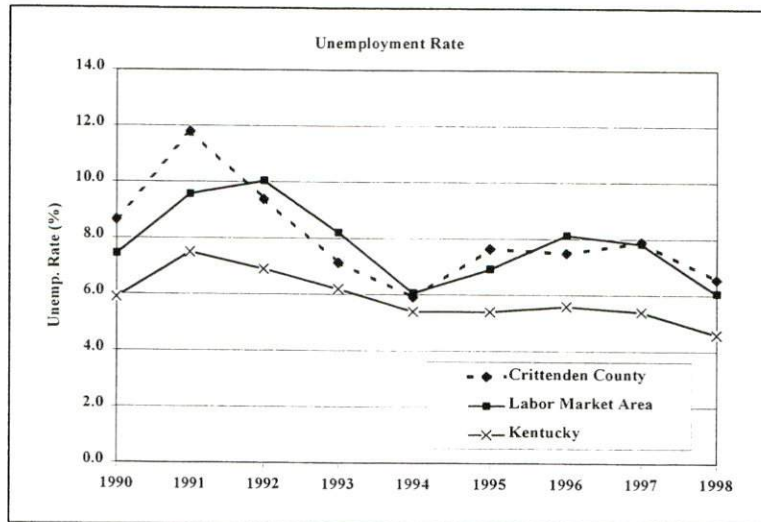
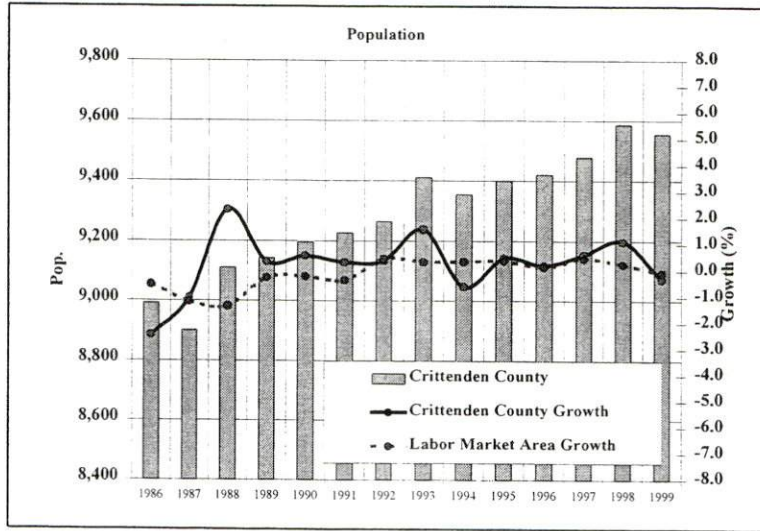
Selected Components of Nonagricultural Employment by Place of Work, 1997

	<u>Crittenden County</u>	<u>Labor Market Area</u>
All Industries	2,223	21,036
Mining & Quarrying	N/A	2,232
Contract Construction	33	781
Manufacturing	516	3,190
Transportation & Public Utilities	75	1,085
Wholesale & Retail Trade	554	4,670
Finance, Insurance, & Real Estate	83	692
Services	558	4,029
State & Local Government	363	3,517
Other	16	219

Note: Excludes domestic workers, railway workers, certain nonprofit corporations, majority of federal government workers, and self-employed workers. N/A – Data not available.

Source: Kentucky Workforce Development Cabinet, Average Monthly Workers Covered by Kentucky Unemployment Insurance Law, 1997. Out-of-state counties within the labor market area provided by the respective states' departments for employment services.

Selected Charts



Per Capita Personal Income

	<u>1993</u>	<u>1997</u>	<u>Percent Change (1993-1997)</u>
Crittenden County	\$13,782	\$15,553	12.9%
Kentucky	\$17,309	\$20,570	18.8%
U.S.	\$21,368	\$25,288	18.3%
Labor Market Area Range	\$12,190 - \$17,679	\$14,600 - \$20,708	-

Source: U.S. Department of Commerce, Bureau of Economic Analysis, 1998.

Average Placement Wages

The Kentucky Department for Employment Services local office in Madisonville serves Crittenden County. The focus of the following data is on job placements made by the Madisonville local office and may therefore be used as an indicator of the wages which employers in the area pay new employees. During the twelve months ended on June 30, 1999, the local employment office filled Crittenden County job openings in various occupational categories. The average hourly wage for selected occupational categories were:

	<u>Number of Placements</u>	<u>Average Wage (\$)</u>
All Occupations	2,732	6.13
Professional, Technical & Managerial	43	5.34
Clerical	330	5.79
Sales	73	5.43
Domestic	12	5.80
Services (excluding domestic)	549	5.32
Agricultural, Fishery, Forestry, etc.	61	5.76
Processing	1,138	6.71
Machine Trades	113	5.60
Bench Work	103	5.22
Structural	138	7.20
Motor Freight & Transportation	92	5.73
Packaging & Materials Handling	79	6.67
Other	1	6.50

Note: Occupational categories are taken from the Dictionary of Occupational Titles published by the U.S. Department of Labor. The Madisonville local office serves Crittenden, Hopkins, and Muhlenberg Counties.

Source: Kentucky Workforce Development Cabinet, Department for Employment Services.

Average Weekly Wages by Industry by Place of Work, 1998

	<u>Crittenden County</u>	<u>Kentucky (Statewide)</u>	<u>Tennessee</u>	<u>Virginia</u>
All Industries	\$407.75	\$512.00	\$546.00	\$595.00
Mining & Quarrying	521.60	808.00	896.00	799.00
Contract Construction	415.21	543.00	585.00	567.00
Manufacturing	679.01	666.00	641.00	670.00
Transportation & Public Utilities	511.06	686.00	674.00	842.00
Wholesale & Retail Trade	200.09	357.00	413.00	416.00
Finance, Insurance, & Real Estate Services	389.56 370.97	652.00 462.00	757.00 521.00	815.00 628.00
State & Local Government	398.42	494.00	511.00	551.00
	<u>Indiana</u>	<u>Ohio</u>	<u>Illinois</u>	<u>U.S.</u>
All Industries	\$566.00	\$579.00	\$668.00	\$610.00
Mining & Quarrying	883.00	813.00	910.00	1,000.00
Contract Construction	642.00	650.00	804.00	641.00
Manufacturing	772.00	801.00	816.00	770.00
Transportation & Public Utilities	662.00	698.00	798.00	756.00
Wholesale & Retail Trade	371.00	409.00	479.00	435.00
Finance, Insurance, & Real Estate Services	686.00 476.00	736.00 510.00	1,023.00 608.00	935.00 577.00
State & Local Government	529.00	586.00	638.00	598.00

Note: The average weekly wage for each category includes salaries and wages of all persons working for that type of business. For example, the manufacturing category includes both production workers and administrative personnel. Domestic workers, railway workers, certain nonprofit corporations, majority of federal government workers, and self-employed workers are excluded. Wages for U.S. and surrounding states rounded to nearest dollar. N/A – Data not available.

Sources: Kentucky Workforce Development Cabinet, Average Weekly Wages of Workers Covered by Kentucky Unemployment Insurance Law, 1998. U.S. Department of Labor, Bureau of Labor Statistics, Employment and Wages, Annual Averages, 1998, December 1999.

EXISTING INDUSTRY

Marion Manufacturing Firms, Their Products and Employment

<u>Firm</u>	<u>Product(s)</u>	<u>1999 Emp.</u>	<u>Date Established</u>
CeraTech Inc.	Industrial ceramic abrasives	32	1987
Crittenden Press Inc.	Newspaper publishing & offset printing	12	1876
Hanson Aggregates	Crushed limestone & asphalt	25	1946
Marion Mining Bolts Corp.	Underground mine roof support bolts	35	1987
Mattoon General Store	Magnetic signs; fabric screen printing	2	N/A
Ohio River Concrete Corp.	Ready-mixed concrete, sand & gravel	6	1964
Par 4 Plastics Inc.	Custom injection & molded plastic products	65	1990
Turner & Conyer Lumber Co. Inc.	Hardwood lumber	37	1958
Tyco Electronics Inc.	Electrical relays, circuit breakers & solenoids	315	1959
Whitmer Co. Inc.	Pharmaceutical products	1	1957

Note: N/A - Data not available.

Sources: Kentucky Directory of Manufacturers published by Harris InfoSource in cooperation with the Kentucky Cabinet for Economic Development, Division of Research; Crittenden Co. Economic Development Corp.

Recent Industrial Developments

1. Pamida Shopping Center is under construction with a Fall 2000 opening scheduled.
2. New tool and automation plant being considered for Industrial Park.
3. New Par 4 Plastics plant opened (Spring 2000) in Industrial Park.
4. Turner & Conyer Lumber Co. expansion is planned for the Winter 2000-01.

Major Marion Supportive/Service Employers

<u>Name of Business/Firm</u>	<u>Type of Business</u>	<u>Employment</u>
Farmers Bank & Trust Co.	Banking	25
The Peoples Bank	Banking	11
Fifth Third Bank	Banking	4

Source: Crittenden Co. Economic Development Corp.

Labor Organizations in Crittenden County

International Union of Operating Engineers, AFL-CIO
Laborers International Union of North America, AFL-CIO

Source: Kentucky Cabinet for Economic Development, Division of Research.

Selected Industrial Services – Within 50 Miles of Marion

Miles	City	Custom Plastics Producers	Electric Motor Repair	Heat Treating Facilities	Industrial Waste Removal	Machine Shops, Tool & Die	Metal Castings	Metal Finishers	Metal Service Centers	Mill- wrights & Riggers
-	Marion					X				
19	Princeton		X							
19	Providence					X				
24	Dawson Springs	X								
25	Dixon	X								
32	Madisonville				X	X		X		
35	Cadiz	X								
35	Corydon	X								
36	Paducah		X		X	X			X	
41	West Paducah					X				
44	Henderson	X				X	X			
46	Hopkinsville	X	X		X	X			X	
48	Kevil					X				
50	Greenville					X			X	

Note: Miles are calculated as the straight-line distance from city center to city center; not road miles.

Source: Kentucky Cabinet for Economic Development, Division of Research.

TRANSPORTATION

Highways

Major highways serving Marion include U.S. Highways 60 and 641. Both highways are AAA-rated (80,000-pound gross load limit) trucking highways. Other highways serving Marion include Kentucky Routes 91 and 120. Kentucky 91 is AAA-rated throughout Crittenden County.

Access to Interstate 24 is available 21 miles south of Marion near Eddyville. An interchange of the Western Kentucky Parkway, a multi-lane east-west highway, is also located 21 miles south of Marion. A bypass on U.S. Highway 60 has been proposed around the northwestern corner of Marion. The bypass is slated for completion in 2002. Also, the 4-laning of U.S. Highway 641 between Marion and the I-24 exit at Kuttawa will begin in 2001 with completion by 2004.

Highway Miles from Marion, Kentucky to Selected Market Centers

<u>City</u>	<u>Highway Miles</u>	<u>City</u>	<u>Highway Miles</u>
Atlanta, GA	367	Indianapolis, IN	305
Baltimore, MD	767	Kansas City, MO	426
Birmingham, AL	313	Knoxville, TN	303
Charleston, WV	403	Lexington, KY	232
Chicago, IL	348	Louisville, KY	191
Cincinnati, OH	289	Minneapolis, MN	727
Cleveland, OH	540	Nashville, TN	125
Columbia, SC	562	New Orleans, LA	606
Columbus, OH	396	New York, NY	932
Dallas, TX	684	Pittsburgh, PA	577
Des Moines, IA	569	Raleigh, NC	659
Detroit, MI	552	Richmond, VA	721
Evansville, IN	68	St. Louis, MO	176
Huntington, WV	354	Tallahassee, FL	620

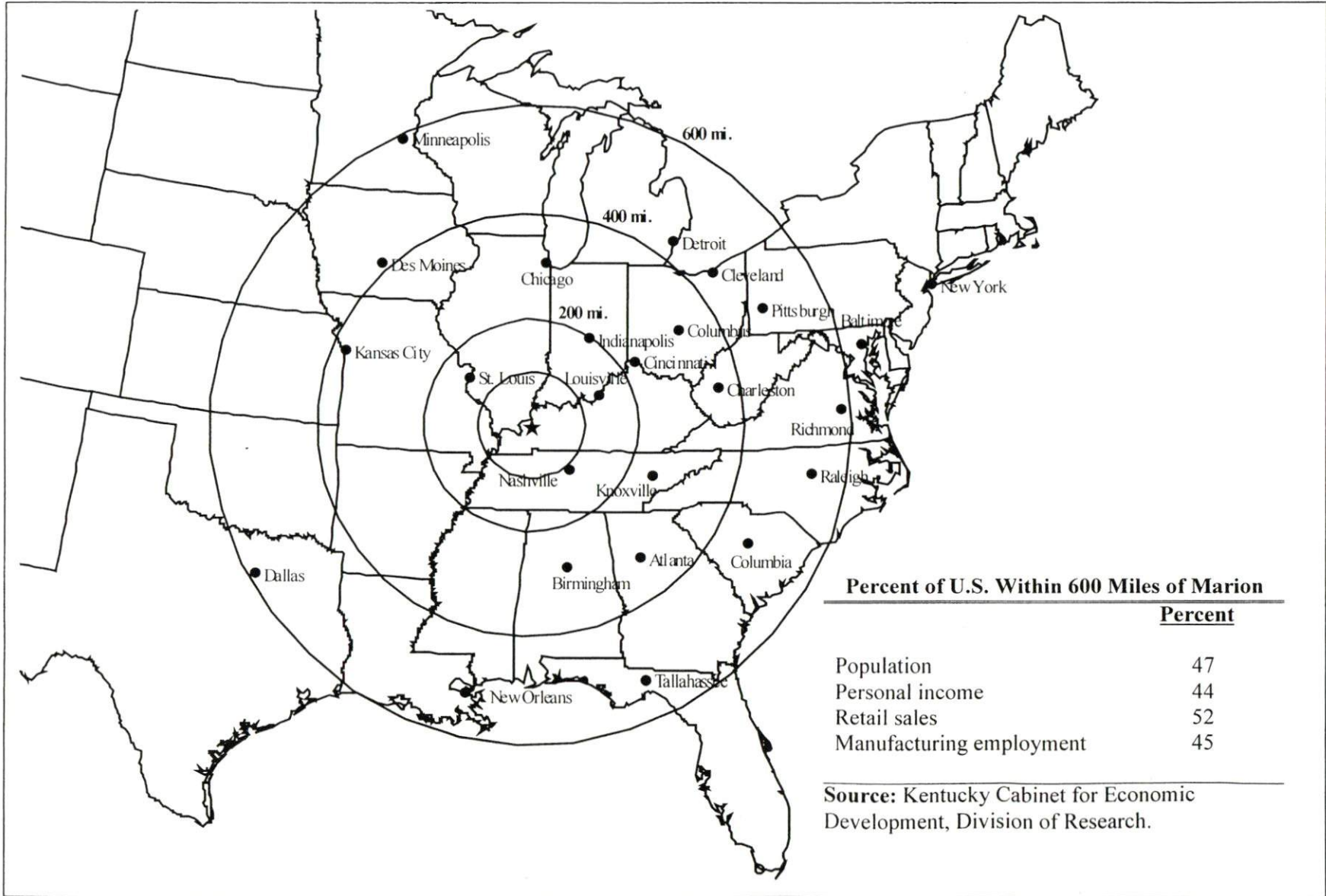
Note: Mileage computations are via the best interstate or primary highways, not necessarily the most direct route of travel.

Source: AAA Map 'n' Go, DeLORME, 1998.

Truck Service

Seventeen common carrier trucking companies provide interstate and/or intrastate service to Marion. American Motor Carrier Directory, 2000 Edition.

Selected Market Centers Map



Rail

Access to the Paducah and Louisville Railway is in Princeton, Kentucky, 19 miles southeast of Marion. The Paducah and Louisville Railway provides intermodal facilities in Paducah, Kentucky, 45 miles southwest of Marion.

For details on routing, schedules, rates, and services contact:

Vice President - Marketing and Sales
Paducah and Louisville Railway
1500 Kentucky Avenue
Paducah, KY 42001
(270) 444-4341

and/or

Western Kentucky Railway
P.O. Box 66
Sturgis, KY 42459
(270) 664-9938

Air

Local

	Marion-Crittenden county Airport
Location:	Marion, KY
Phone:	None
Number of runways:	1
Length and type of longest runway:	2,500 feet (turf)

	Sturgis Airport
Location:	Sturgis, KY
Distance from Marion:	19 miles north
Phone:	(270) 333-4487
Number of runways:	2
Length and type of longest runway:	5,000 feet

Commercial/International

	Barkley Regional Airport
Location:	Paducah, KY
Distance from Marion:	44 miles southwest
Phone:	(270) 744-0521
Air service:	Northwest Airlinck, TW Express
Daily arrivals & departures:	18

	Evansville Regional Airport
Location:	Evansville, IN
Distance from Marion:	68 miles northeast
Phone:	(812) 421-4401

Air service: ASA, Comair, American Eagle, Northwest Airlinck, TWA Express, US Airways Express
Daily arrivals & departures: 98

Nashville International Airport

Location: Nashville, TN
Distance from Marion: 122 miles southeast
Phone: (615) 275-1600
Air service: Air Canada, American, American Eagle, Comair, Continental, Corporate Express, Delta, Delta Express, Midway Connection, Northwest, Skyway, Southwest, TWA, United, US Airways, US Airways Express, Trans States
Daily arrivals & departures: 364

Water

Marion is located approximately ten miles from the Ohio River which forms the northwestern boundary of Crittenden County. A nine-foot navigation channel is maintained the entire length of the Ohio River.

Three public riverports are located within a 55-mile radius of Marion. The Lyon County Riverport is located on Lake Barkley, 24 miles south of Marion; the Paducah-McCracken County Riverport is located 47 miles southwest of Marion; and the Henderson County Riverport is located approximately 54 miles northeast of Marion.

Ferry

Kentucky and Illinois operate a free ferry between Crittenden County and Cave-In Rock, Illinois. The ferry operates 16 hours a day, 7 days a week. Each month an average of 15,000 cars cross the ferry. The ferry is located 9 miles north of Marion on Highway 91.

UTILITIES

Electricity

Service area: **majority of Crittenden County**
Company: Henderson Union Electric Cooperative
Source of power: Big Rivers Electric Corporation
For industrial rates contact:

Henderson Union Electric Cooperative
6402 Old Corydon Road
P.O. Box 18
Henderson, KY 42420
(270) 826-3991

and/or

Big Rivers Electric Corporation
Manager of Economic Development
201 Third Street, P.O. Box 24
Henderson, KY 42420
(270) 827-2561

Service area: **Marion and portions of southwestern Crittenden County**
Company: Kentucky Utilities Company
Source of power: Kentucky Utilities Company
For industrial rates contact:

Kentucky Utilities Company
Economic Development Department
One Quality Street
Lexington, KY 40507
(859) 255-2100

Natural Gas

Service area: **Marion**
Company: Western Kentucky Gas Company
Source of supply: Texas Gas Transmission Company
For rates and supplies contact:

Western Kentucky Gas Company
2401 New Hartford Road
P.O. Box 886
Owensboro, KY 42302-0866
(270) 685-8069

Public Water Supply

Service area: **Marion**
Company: City of Marion
108 East Bellville Street
Marion, KY 42064
(270) 965-2266

Treatment facilities information:

Source of raw water:	Two municipally owned lakes
Treatment plant capacity:	1,000,000 gallons
Average daily consumption:	527,995 gallons
Peak daily consumption:	896,200 gallons
Storage capacity:	1,200,000 gallons
Water pressure:	60 psi to 65 psi
Additional water source (maximum available for purchase):	Crittenden-Livingston Water District (100,000 gallons per day)

Raw Water

Surface water sources - Ohio and Tradewater Rivers

Average discharge - Ohio River at Evansville Indiana, 133,300 cfs (34 years, USGS, unadjusted);

Tradewater River at Olney, Kentucky - 335 cfs (54 years USGS)

Expected ground water yield - 500 to 1,000 gpm along Ohio River; 50 to 200 gpm along Tradewater River, west central and south central portions of Crittenden County; 5 to 50 gpm in central and western portions of county; 5 gpm or less along southeastern border of the county

Sewerage

Service area:	Marion
Company information:	City of Marion 108 East Bellville Street Marion, KY 42064 (270) 965-2266

Design capacity:	660,000 gallons per day
Average daily flow:	810,000 gallons
Type of treatment:	Secondary
Treated effluent discharged into:	Rush Creek

CLIMATE

Crittenden County

Temperature

Normal (16-year record)	50.0 degrees
Average annual, 1999	58.9 degrees
Record highest, August 1988 (16-year record)	104 degrees
Record lowest, January 1985 (16-year record)	-15 degrees
Normal heating degree days (30-year record)	4,279
Normal cooling degree days (30-year record)	1,475

Precipitation

Normal (30-year record)	49.31 inches
Mean annual snowfall (30-year record)	12.0 inches
Total precipitation, 1999	41.09 inches
Mean number days precipitation (0.01 inch or more) (30-year record)	107.9
Mean number days thunderstorms (17-year record)	55.3

Prevailing Winds (17-year record) South

Relative Humidity (30-year record)

12 midnight	77 percent
6 a.m.	80 percent
12 noon	62 percent
6 p.m.	67 percent

Notes: Heating degree day totals are the sums of negative departures of average daily temperatures from 65 degrees F. Cooling degree day totals are the sums of positive departures of average daily temperatures from 65 degrees F.

Source: U.S. Department of Commerce, National Climatic Data Center, Local Climatological Data, 1999.
Station of record: Paducah, Kentucky.

LOCAL GOVERNMENT

Structure

The city of Marion is governed by a mayor, six council members and a full-time city administrator. The mayor is elected to a four-year term while the council members each serve two-year terms. Crittenden County is governed by a county judge/executive and six magistrates. Each county official is elected to a four-year term.

Planning and Zoning

There are no active planning and zoning agencies in Marion or Crittenden County at the present time. Phase I of a comprehensive Master Plan for planning and zoning was recently completed and is being implemented.

Mandatory state codes enforced - Kentucky Plumbing Code, National Electric Code, Kentucky Boiler Regulations and Standards, Kentucky Building Code (modeled after BOCA code)

Local Fees and Licenses

The City of Marion levies an occupational license tax of 0.75 percent of all wages, salaries and commissions of individuals and on net profits of businesses. A \$25 business license fee is also levied on businesses within the city. The business license fee is credited toward the net profits tax. A municipal insurance premium tax of four percent is also levied by the City of Marion.

Sales and Use Tax

A state sales and use tax is levied at the rate of 6.0% on the purchase or lease price of taxable goods and on utility services. Local sales taxes are not levied in Kentucky.

State and Local Property Taxes

The Kentucky Constitution requires the state to tax all classes of taxable property, and state statutes allow local jurisdictions to tax only a few classes. All locally taxed property is subject to county taxes and school district taxes (either a county school district or an independent school district). Property located inside the city limits may also be subject to city property taxes. Property assessments in Kentucky are at 100% fair cash value. Accounts receivable are taxed at 85% of face value. Special local taxing jurisdictions (fire protection districts, watershed districts, and sanitation districts) levy taxes within their operating areas (usually a small portion of community or county).

State Property Tax Rates Per \$100 Valuation

<u>Selected Classes of Property</u>	<u>State Rate, 1999</u>	<u>Local Taxation Permitted</u>
Real Estate	\$0.148	Yes
Manufacturing Machinery	0.150	No
Pollution Control Equipment	0.150	No
Inventories:		
Raw Materials	0.050	No
Goods in Process	0.050	No
Finished Goods	0.050	Yes
Motor Vehicles	0.450	Yes
Other Tangible Personal Property	0.450	Yes
Intangibles (Accounts Receivable, Money on Hand)	0.250	No

Source: Property Tax Rates 1999, Kentucky Revenue Cabinet, Department of Property Valuation.

Local Property Tax Rates Per \$100 Valuation, 1999

<u>Taxing Jurisdiction</u>	<u>Real Estate</u>	<u>Finished Goods & Tangibles</u>	<u>Motor Vehicles</u>
<u>County</u>			
Crittenden County	0.1890	0.2045	0.1990
<u>Cities</u>			
Marion	0.2340	0.2800	0.2290
<u>School Districts</u>			
Crittenden County	0.3700	0.3700	0.5410

Source: Property Tax Rates 1999, Kentucky Revenue Cabinet, Department of Property Valuation.

EDUCATION

Primary and Secondary Schools

Public School District Enrollments and Expenditures, 1998-99

	<u>Total Enrollment</u>	<u>Expenditures Per Pupil</u>	<u>Pupil to Teacher Ratio</u>
Crittenden County	1,567	\$5,365	15.8

Source: Kentucky Department of Education, Office of Curriculum, Assessment, and Accountability.

Transition to Adult Life of High School Graduates, 1996-97

<u>County-wide</u>	<u>Number of Graduates</u>	<u>Percent of Total Graduates (%)</u>
Total High School Graduates	99	
To College	50	50.5
To Vocational/Technical School	6	6.1
To Workforce	27	27.3
To Work & School	9	9.1
To Military	1	1.0
Other	6	6.1

Source: Kentucky Department of Education, Office of Curriculum, Assessment, and Accountability.

Colleges and Technical Schools

Area Colleges and Universities Within 60 Miles of Marion

<u>Miles</u>	<u>Institution</u>	<u>Location</u>	<u>Enrollment (Fall 1999)</u>
32	Madisonville Community College	Madisonville	1,742
36	Paducah Community College	Paducah	2,933
44	Henderson Community College	Henderson	1,176
46	Hopkinsville Community College	Hopkinsville	2,449
51	Murray State University	Murray	8,914
54	University of Evansville	Evansville, IN	3,130
54	University of Southern Indiana	Evansville, IN	8,300
60	Brescia College	Owensboro	720
60	Kentucky Wesleyan College	Owensboro	748
60	Owensboro Community College	Owensboro	2,134
Total Enrollment			32,246

Note: Miles are calculated as the straight-line distance from Marion, not road miles.

Source: Kentucky Council on Higher Education.

Kentucky Technical Schools Within 60 Miles of Marion

<u>Miles</u>	<u>Institution</u>	<u>Location</u>	<u>Enrollment (1997-98)</u>		
			<u>Sec</u>	<u>P/S</u>	<u>Total</u>
19	Caldwell County ATC	Princeton	342	26	368
25	Webster County ATC	Dixon	409	1	410
32	Madisonville Technical College Madisonville Health Extension	Madisonville	0	372	372
32	Madisonville Technical College	Madisonville	74	128	202
36	Marshall County Area Vocational Education Center	Benton	348	0	348
36	Paducah ATC	Paducah	496	24	520
36	West KY Technical College	Paducah	21	1,113	1,134
44	Henderson County ATC	Henderson	701	2	703
46	Christian County ATC	Hopkinsville	241	28	269
50	Muhlenberg County ATC	Greenville	142	57	199
51	Murray ATC	Murray	237	23	260
52	Mayfield ATC	Mayfield	170	29	199
57	Ballard Vocational School	Barlow	254	0	254
60	Owensboro Technical College	Owensboro	109	365	474
60	Owensboro Technical College Daviess County Extension	Owensboro	225	150	375
Total Enrollment			3,769	2,318	6,087

Notes: Kentucky Tech secondary schools (Sec), called area technology centers (ATC), are operated by the Cabinet for Workforce Development and the post-secondary schools (P/S), called technical colleges, are governed by the Kentucky Community and Technical College System (KCTCS). Adult courses may be offered at some secondary technical schools. Miles are calculated as the straight-line distance from Marion, not road miles.

Source: Kentucky Workforce Development Cabinet, KCTCS.

Customized Training

The Kentucky Tech system, through its training and development coordinators, will provide technical assistance and will identify and develop low-cost customized training programs and services for both established and prospective businesses. Businesses wanting to establish a customized training program should contact a Training and Development Coordinator at the Madisonville Technical College (270) 824-7544.

Assessment Services

Kentucky Tech Career Connections offers business, education, and government agencies testing packages for evaluating job applicants, selecting employees for promotional consideration and developing training programs within the organization. The Career Connections Assessment Center serving the Marion area is located at the Madisonville Technical College (270) 825-5059.

Adult Education Services

Adult education programs are available to adults who want to develop new academic skills, improve basic skills, or earn a high school equivalency diploma. In the Marion area, adult basic education and adult literacy classes are administered through the Crittenden County Board of Education and the Crittenden County Literacy Project.

Bluegrass State Skills Corporation

The Bluegrass State Skills Corporation (BSSC) was established in 1984 by the General Assembly of the Commonwealth of Kentucky as an independent, de jure corporation to stimulate economic development through customized business and industry specific skills training programs. The BSSC works with business and industry and Kentucky's educational institutions to establish programs of skills training. The BSSC is attached to the Cabinet for Economic Development for administrative purposes, in recognition of the relationship between economic development and skills training efforts.

The BSSC is comprised of two economic development tools, matching grants and the newly authorized Skills Training Investment Credit Act. The BSSC grant program is available to new, expanding and existing business and industry. Eligible training activities include pre-employment skills training and assessment; entry level, skills upgrade and occupational upgrade training; train-the-trainer travel; and capacity-building. The Skills Training Investment Credit Act provides tax credits to existing businesses for skills upgrade training.

OTHER LOCAL FACILITIES

Local Medical Personnel

Physicians - 9

Dentists - 2

Hospitals

General Hospital	Location	Beds
Crittenden County Hospital	Marion	50

Medical staff - 7 active physicians, 13 courtesy physicians, 55 registered nurses, and 27 licensed practical nurses (excluding those in management).

Outpatient Clinics - Oncology, urology, podiatry, psychology, rehabilitation services, otorhinolaryngology and minor surgery.

Other Medical Facilities and Services

Crittenden County Convalescent Center

Crittenden County Health Center

Crittenden County Ambulance Service

Family Practice Clinic

Marion Home Health Agency

Marion Physicians Clinic

Springlake Nursing Home (Livingston County)

Banks and Savings & Loan Associations

Farmers Bank & Trust Company

Fifth Third Bank

The Peoples Bank

Newspapers

Crittenden Press (weekly)

Telephone Service

BellSouth

RECREATION

Public recreational facilities at Marion include two parks, two playgrounds, four tennis courts, five baseball/softball diamonds, two football fields, a fairground with an exhibition building, a livestock show barn and a horse show ring.

The Marion/Crittenden Park features four lighted baseball/softball diamonds, three lighted tennis courts, two lighted basketball courts, a volleyball court, a six-lane running track, a shuffleboard court, a shelterhouse, restrooms, concession stand, picnic areas with grills, and ample parking.

The Veterans Memorial Park provides excellent and well-maintained playground equipment and facilities for children age 12 and under.

Of special interest to residents and visitors to Marion is the Bob Wheeler Museum. This privately-owned museum contains the largest collection of hand tools and home utensils in western Kentucky. In addition to memorabilia, a circa 1800 loom is on display. In perfect working order, the loom is used in conjunction with the Crittenden County School System to teach students the art of weaving.

Fohs Hall Community Center is a restored school that provides facilities for community activities including symphony concerts and plays and contains a civic auditorium and art gallery. In addition, the Clement Mineral Museum is located adjacent to Fohs Hall. The museum contains one of the world's largest collections of minerals with more than 50,000 pieces.

Private facilities include a country club with a nine-hole golf course which recently underwent a \$200,000 upgrade, a swimming pool and clubhouse, and a racquet club.

Dam 50, located in northern Crittenden County and the site of the former lock and dam on the Ohio River, provides public space for primitive camping and a boat ramp.

Area (Within 60 miles)

Bluegrass Downs (quarter horse racing) (near Paducah)
John James Audubon State Park (Henderson)
Kenlake State Resort Park (Hardin)
Kentucky Dam Village State Resort Park (Gilbertsville)
Lake Barkley State Resort Park (Cadiz)
The Land Between the Lakes National Recreation Area (Lake Barkley, Kentucky Lake area)
Pennyrile Forest State Resort Park (Dawson Springs)

APPENDIX A - DEFINITIONS

Geographic definition of the labor market area

A county's labor market area is defined as the base county, adjacent counties, and any other major commuting counties. Adjacency is used to define the labor market area primarily because of the small size of Kentucky's counties. The major commuting counties are defined from the point of view of the base county. Major commuting counties are those counties that comprise 90% of the base county's total commuters. The source of the commuting patterns is the 1990 journey-to-work data available from the U.S. Department of Commerce, Bureau of Economic Analysis.

Example – Logan County

To determine the labor market area for Logan County the following steps are taken. First, the counties with workers commuting into Logan county are listed in ascending order (see the table below). The cumulative percent is calculated. Next, all counties that comprise up to 90% of the commuters are included in the labor market area (actually the cut-off will be the county that breaks the 90% threshold – Montgomery County, TN at 92.6% in this case). Although Robertson is not a major commuter county, it is included since it is adjacent. The Logan County labor market is then comprised of the seven bold-faced counties in the table below.

Labor Market Area – Logan County (Example Only)				
<u>Adjacent to Logan</u>	<u>Commuter County</u>	<u>Commuters into Logan</u>	<u>Percent of Total Commuters</u>	<u>Cumulative Percent</u>
Y	Todd	385	24.4%	24.4%
Y	Warren	377	23.9	48.4
Y	Muhlenberg	365	23.2	71.5
Y	Simpson	162	10.3	81.8
Y	Butler	116	7.4	89.1
	Montgomery, TN	55	3.5	92.6
	Christian	36	2.3	94.9
	Sumner, TN	35	2.2	97.1
Y	Robertson, TN	25	1.6	98.7
	Davidson, TN	20	1.3	100.0
	<i>Total Commuters into Logan County</i>	<i>1,576</i>	<i>100.0</i>	

Source: U.S. Department of Commerce, Bureau of Economic Analysis. Regional Economic Information System, CD-ROM. August 1997.

Potential Labor Supply

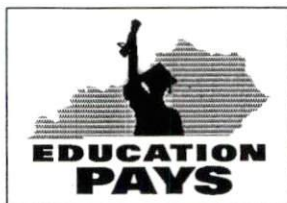
The potential labor supply is an estimate of those persons not classified as in the labor force (not employed and not unemployed), but who want a job. The assumption is that people not in the labor force at the local level would like a job at the same rate as the nation. The U.S. Department of Labor, Bureau of Labor Statistics provides national, yearly estimates of the percent of the people not in the labor force who want a job. This percent is applied to the county-level number of people not in the labor force.

Underemployed

Wholesale/retail trade and non-professional services have historically paid low wages. The assumption is that workers in these industries would take higher paying jobs if they were available. Non-professional services excludes Miscellaneous Repair Services (SIC 7600), Health Services (SIC 8000), Legal Services (SIC 8100), and Engineering and Management Services (SIC 8700).

Total Available Labor

Total available labor is the sum of the number of unemployed, potential labor supply, and underemployed. Please note that the number of unemployed is the only generally accepted measure of labor availability. The other concepts are weaker measures and should be used with caution.



Kentucky

Cabinet For Economic Development

2300 Capital Plaza Tower, 500 Mero Street, Frankfort, KY 40601, 502 • 564 • 7140



Printed on recycled paper.