

1983

# Industrial Resources: Estill County - Irvine and Ravenna

Kentucky Library Research Collections  
Western Kentucky University, [spcol@wku.edu](mailto:spcol@wku.edu)

Follow this and additional works at: [https://digitalcommons.wku.edu/estill\\_cty](https://digitalcommons.wku.edu/estill_cty)



Part of the [Business Administration, Management, and Operations Commons](#), [Growth and Development Commons](#), and the [Infrastructure Commons](#)

---

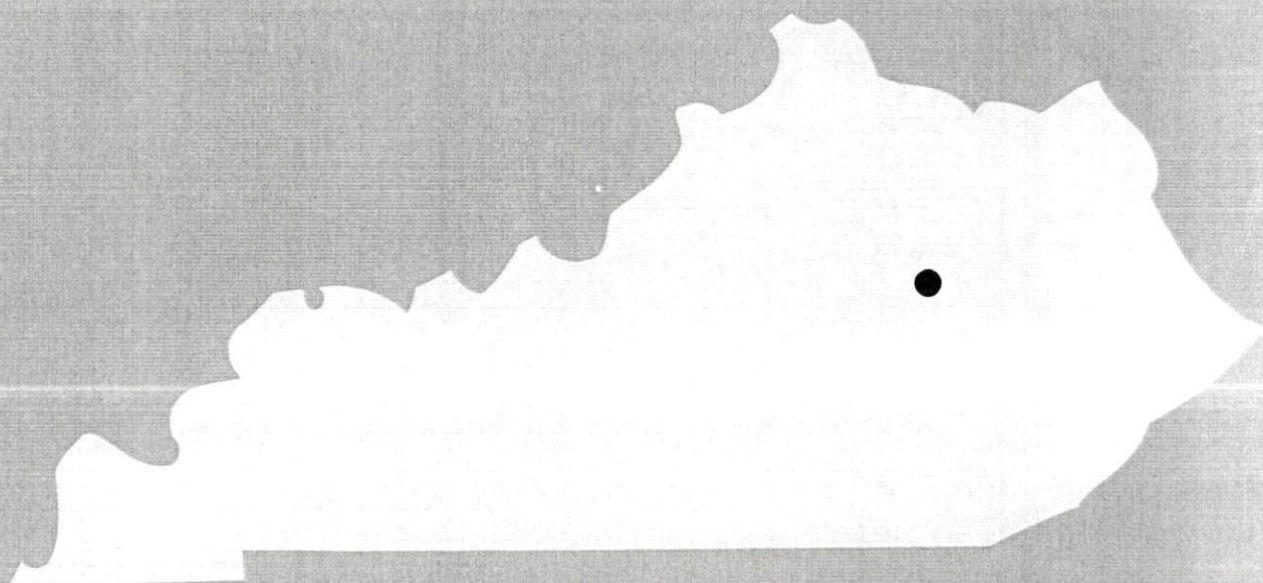
## Recommended Citation

Kentucky Library Research Collections, "Industrial Resources: Estill County - Irvine and Ravenna" (1983). *Estill County*. Paper 15.  
[https://digitalcommons.wku.edu/estill\\_cty/15](https://digitalcommons.wku.edu/estill_cty/15)

This Report is brought to you for free and open access by TopSCHOLAR®. It has been accepted for inclusion in Estill County by an authorized administrator of TopSCHOLAR®. For more information, please contact [topscholar@wku.edu](mailto:topscholar@wku.edu).

1983

A comprehensive  
report on  
**Irvine and  
Ravenna, Ky.**



**KENTUCKY & CO.**  
The state that's run like a business.

A COMPREHENSIVE REPORT ON  
IRVINE AND RAVENNA, KENTUCKY

Prepared by  
The Kentucky Department of Economic Development  
Division of Research and Planning  
in cooperation with  
Estill County and the Cities of Irvine and Ravenna

1983

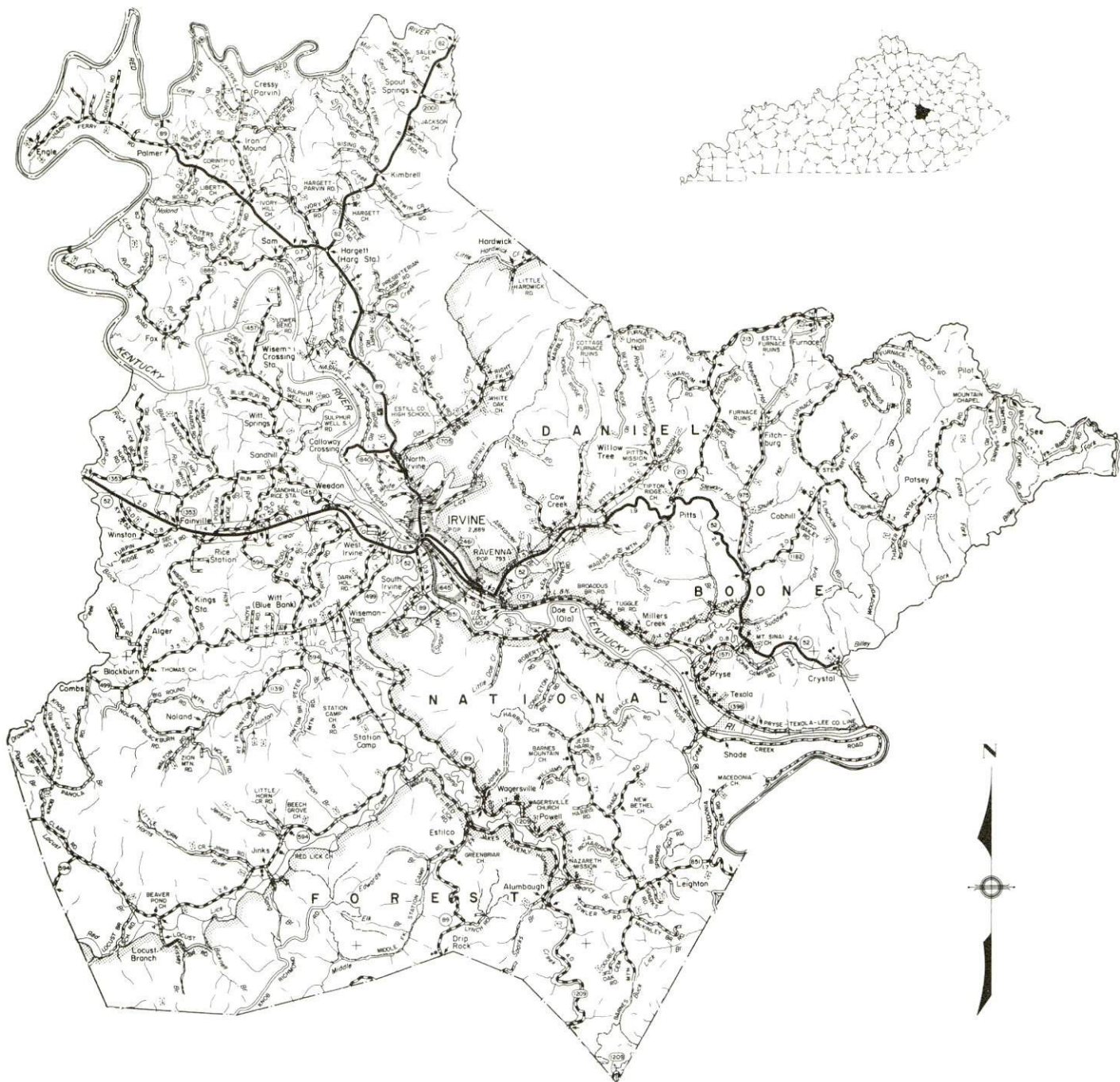
Program manager - Pamela Riley; research - Andrew Dennis; clerical - Shirley Wood; graphics - Frank Ferrante, Tony Cecconi, Robert Owens; cartography - Site Evaluation Branch, Division of Industrial Development. Cost of printing paid from state funds.



# TABLE OF CONTENTS

<u>Chapter</u>	<u>Page</u>
INDUSTRIAL SITES . . . . .	i
IRVINE AND RAVENNA, KENTUCKY - A RESOURCE PROFILE . . . . .	1
THE LABOR MARKET AREA . . . . .	3
Population . . . . .	3
Labor Force Characteristics of Residents, 1981 . . . . .	3
Selected Components of Nonagricultural Employment, by Place of Work, 1981 . . . . .	4
Estill County Manufacturing Firms, Their Products and Employment . . . . .	5
Labor Organizations in Manufacturing Firms . . . . .	6
Industrial Services . . . . .	6
Estimated Male Labor Supply . . . . .	7
Estimated Female Labor Supply . . . . .	7
Average Weekly Wages by Industry, by Place of Work, 1981 . . . . .	8
Per Capita Personal Income . . . . .	10
TRANSPORTATION . . . . .	11
Rail . . . . .	11
Highways . . . . .	11
Truck Service . . . . .	12
Air . . . . .	13
Bus . . . . .	13
Taxi . . . . .	13
Rental Services . . . . .	13
Water . . . . .	13
POWER AND FUEL . . . . .	14
Electricity . . . . .	14
Natural Gas . . . . .	15
Other Fuels . . . . .	15
WATER AND SEWERAGE . . . . .	16
Public Water Supply . . . . .	16
Raw Water . . . . .	17
Sewerage . . . . .	18
CLIMATE . . . . .	19

<u>Chapter</u>	<u>Page</u>
LOCAL GOVERNMENT . . . . .	20
City . . . . .	20
County . . . . .	20
Assessed Value of Property, 1982 . . . . .	20
Property Taxes . . . . .	21
Combined State and Local Rates Per \$100 Valuation, 1982 . . . . .	22
Planning and Zoning . . . . .	22
Safety . . . . .	23
Police . . . . .	23
Fire . . . . .	23
Rescue Service . . . . .	23
Refuse Collection and Disposal . . . . .	23
EDUCATION . . . . .	24
Public Schools . . . . .	24
Area Colleges and Universities . . . . .	25
Vocational Schools . . . . .	25
HEALTH . . . . .	28
Local Medical Personnel . . . . .	28
Hospitals . . . . .	28
Other Medical Facilities . . . . .	28
Ambulance Service . . . . .	28
Public Health . . . . .	28
OTHER LOCAL FACILITIES . . . . .	29
Communications . . . . .	29
Library Services . . . . .	30
Religious Institutions . . . . .	30
Financial Institutions . . . . .	30
Hotels and Motels . . . . .	30
Clubs and Organizations . . . . .	31
RECREATION . . . . .	32
COMMUNITY IMPROVEMENTS . . . . .	34



1982 EDITION  
 GENERAL HIGHWAY MAP  
**ESTILL COUNTY**  
**KENTUCKY**

PREPARED BY THE  
 KENTUCKY DEPARTMENT OF TRANSPORTATION  
 BUREAU OF HIGHWAYS  
 DIVISION OF PROJECT DEVELOPMENT  
 IN COOPERATION WITH THE  
 U.S. DEPARTMENT OF TRANSPORTATION  
 FEDERAL HIGHWAY ADMINISTRATION









## IRVINE AND RAVENNA, KENTUCKY - A RESOURCE PROFILE

Irvine, the county seat of Estill County, is situated on the Kentucky River in east central Kentucky. Irvine is 46 miles southeast of Lexington, Kentucky; 123 miles southeast of Louisville, Kentucky; 127 miles south of Cincinnati, Ohio; and 167 miles north of Knoxville, Tennessee. The city has a 1980 population of 2,889.

The city of Ravenna lies immediately adjacent to Irvine. Ravenna had a 1980 population of 793.

Estill County, which covers 256 square miles, is located in the Knobs physiographic region. Approximately half of the county falls within the Daniel Boone National Forest. Estill County had a 1980 population of 14,495.

### The Economic Framework

The total number of Estill County residents employed in 1981 averaged 5,510, with nonagricultural jobs accounting for 5,430 workers. Manufacturing employers in the county reported 470 workers; mining and quarrying firms 300; wholesale and retail trade 420; state and local government 460; and 150 employees in service occupations. Manufacturing employment is greatest in the apparel and related products industry.

Per capita income in Estill County in 1980 was \$5,936. Between 1976 and 1980 per capita income in the county increased by 40 percent.

The Irvine and Ravenna labor market area includes Estill and the five adjoining counties. The total number of residents of the labor market area employed in 1981 averaged 53,650, with nonagricultural jobs accounting for 50,800 workers. Manufacturing employers in the area reported 8,090 workers; mining and quarrying firms 690; wholesale and retail trade 6,890; state and local government 6,340; and 3,925 in service occupations.

### Resources for Growth

1. Labor Supply - There is a current labor supply of 9,480 men and 7,430 women available for industrial jobs in the labor market area. In addition, from 1983 through 1987, 5,475 young men and 5,180 young women in the area will become 18 years of age and potentially available for work.

2. Transportation - The Seaboard System Railroad provides Irvine and Ravenna with main line service and a terminal. Kentucky Route 52, a "AAA" rated trucking highway, serves both cities. The Mountain Parkway, a multi-lane toll road, is 14 miles north of Irvine via Kentucky 89, and Interstate 75 is 23 miles to the west via Kentucky 52. Three common carriers serve the cities. The nearest scheduled airline service is available at Lexington's Blue Grass Field, 50 miles northwest of Irvine.

3. Power and Fuel - Irvine, Ravenna and portions of Estill County are supplied electrical power by Kentucky Utilities Company. Electrical power is also provided to the county by Clark RECC and Jackson County RECC. Natural gas service is provided to Irvine and Ravenna by Columbia Gas of Kentucky, Inc., which is supplied by Columbia Gas Transmission Corporation. Six distributors of propane are within 21 miles of Irvine and three distributors of distillate fuel oil are in Irvine and Ravenna.

4. Education - Primary and secondary education is provided by the Estill County School System which serves over 3,200 students.

Three universities, one senior college, one junior college, and one technical school are located within 52 miles of Irvine.

The Central Kentucky State Vocational-Technical School, 46 miles northwest of Irvine in Lexington, offers vocational training in 19 different courses. The Madison County Area Vocational Education Center, 21 miles distant in Richmond, offers training in seven courses.

## THE LABOR MARKET AREA

The Irvine and Ravenna Labor Market Area includes Estill County and the adjoining Kentucky counties of Clark, Jackson, Lee, Madison and Powell.

### POPULATION

<u>Area</u>	<u>1980</u>	<u>1970</u>	<u>Percent Nonwhite</u>
Irvine	2,889	2,918	0.6
Ravenna	793	784	0.3
Labor Market Area	127,020	103,868	N/A
Estill County	14,495	12,752	0.2
Clark County	28,322	24,090	6.5
Jackson County	11,996	10,005	0.1
Lee County	7,754	6,587	0.5
Madison County	53,352	42,730	6.8
Powell County	11,101	7,704	1.2

Note: The 1980 counts of population by race are provisional.

Sources: U. S. Department of Commerce, Bureau of the Census, 1980 Census of Population and Housing, March 1981; 1980 Census of Population, Number of Inhabitants. Population Research Unit, Urban Studies Center, University of Louisville, Kentucky Demographics: The 1980 Census of Kentucky, Characteristics of Population, Households, Housing, January 1982.

### LABOR FORCE CHARACTERISTICS OF RESIDENTS, 1981

	<u>Estill County</u>	<u>Labor Market Area</u>
Civilian Labor Force	6,302	59,151
Employment	5,507	53,654
Agricultural	75	2,851
Nonagricultural	5,432	50,803
Unemployment	795	5,497
Rate of Unemployment (%)	12.6	9.3

Source: Kentucky Cabinet for Human Resources, Kentucky Labor Force Estimates, Annual Averages, 1981.



SELECTED COMPONENTS OF NONAGRICULTURAL EMPLOYMENT,  
BY PLACE OF WORK, 1981

	<u>Estill County</u>	<u>Labor Market Area</u>
All Industries (total)	1,989	29,949
Manufacturing	472	8,090
Wholesale & Retail Trade	421	6,893
Services	151	3,925
State/Local Government	460	6,341
Contract Construction	56	1,088
Mining & Quarrying	302	691

Source: Kentucky Cabinet for Human Resources, Average Monthly Workers Covered by Kentucky Unemployment Insurance Law, 1981.



ESTILL COUNTY MANUFACTURING FIRMS,  
THEIR PRODUCTS AND EMPLOYMENT

Firm (Establishment date)	Product	Employment			Labor Unions
		Total	Male	Female	
Irvine					
Carhartt Midwest, Inc., (1934)	Work clothing, men's outer- wear	314	62	252	Garment Workers*
Central Mold & Tool Company (1980)	Custom plas- tic molds	8	N/A	N/A	
Citizen Voice and Times (1886)	Newspaper	7	3	4	
Concrete Materials Corporation (1956)	Ready mix concrete, concrete septic tank	4	3	1	
Estill County Pallet Company (1970)	Wood pallets	11	10	1	
Estill Ice Company, Inc. (1919)	Ice	1	0	1	
Ravenna					
Hinkle Contracting Corporation (1969)	Asphalt mate- rial paving	3	3	0	
Smyth Lumber Company (1948)	Rough lumber, truck bodies, window and door frames	19	18	1	
Tipton Ridge Quarry (1959)	Crushed stone, agricultural lime	10	10	0	
Visumatic Industrial Products (1978)	Assemblies	41	4	37	

\*See Labor Organizations.

Source: Kentucky Department of Economic Development, 1982 Kentucky  
Directory of Manufacturers. Kentucky Department of Economic  
Development, Division of Research and Planning.

In addition to local manufacturers, a major employer in the area is Southeast Coal Company. The company has a coal cleaning facility in Irvine and also repairs mine equipment and rail cars. Southeast Coal Company maintains an average employment of approximately 150.

#### LABOR ORGANIZATIONS IN MANUFACTURING FIRMS

<u>Union</u>	<u>Representing workers at:</u>
United Garment Workers of America, AFL-CIO	Carhartt Midwest, Inc.

#### INDUSTRIAL SERVICES

<u>Types of Services</u>	<u>Location</u>	<u>Mileage from Irvine</u>
Tool & Die, Machine & Pattern Shops	Richmond	21
Metal Service Centers	Lexington	46
Heat Treating	Richmond	21
Metal Finishers	Richmond	21
Electric Motor Repair	Lexington	46

Source: Kentucky Department of Economic Development, Kentucky Directory of Selected Industrial Services, 1981.

ESTIMATED MALE LABOR SUPPLY  
IRVINE AND RAVENNA LABOR MARKET AREA

Area	Current			Future	
	Total	Unemployed	Under-employed	Not in Labor Force	Becoming 18 years of age 1983 thru 1987
Labor Market					
Area*	9,480	3,430	3,425	2,625	5,475
Estill	1,235	484	286	465	737
Clark	1,309	863	446	0	1,289
Jackson	1,351	380	181	790	585
Lee	1,311	221	202	888	379
Madison	3,222	1,078	2,144	0	1,882
Powell	1,052	404	166	482	603

\*Additional workers may be drawn from other nearby counties.

Note: Unemployed - persons unemployed and actively seeking work; Under-employed - persons employed but working only 14 to 26 weeks per year. Not in Labor Force - represents the number of persons who would enter the labor force if suitable employment were available (based on the assumption that persons in Kentucky would like to participate in the labor force in the same proportion that they do nationally).

Sources: Kentucky Cabinet for Human Resources, Kentucky Labor Supply Estimates by Area Development District and County, 1981. Kentucky Department of Economic Development, Future Labor Supply Becoming 18 Years of Age, 1983 Thru 1987.

ESTIMATED FEMALE LABOR SUPPLY  
IRVINE AND RAVENNA LABOR MARKET AREA

Area	Current			Future	
	Total	Unemployed	Under-employed	Not in Labor Force	Becoming 18 years of age 1983 thru 1987
Labor Market					
Area*	7,431	2,067	3,860	1,504	5,176
Estill	586	311	275	0	702
Clark	1,308	556	752	0	1,209
Jackson	1,065	186	187	692	562
Lee	1,000	59	129	812	369
Madison	2,989	694	2,295	0	1,840
Powell	483	261	222	0	494

\*Additional workers may be drawn from other nearby counties.

Note: Unemployed - persons unemployed and actively seeking work; Under-employed - persons employed but working only 14 to 26 weeks per year. Not in Labor Force - represents the number of persons who would enter the labor force if suitable employment were available (based on the assumption that persons in Kentucky would like to participate in the labor force in the same proportion that they do nationally).

Sources: Kentucky Cabinet for Human Resources, Kentucky Labor Supply Estimates by Area Development District and County, 1981. Kentucky Department of Economic Development, Future Labor Supply Becoming 18 Years of Age, 1983 Thru 1987.



AVERAGE WEEKLY WAGES BY INDUSTRY  
BY PLACE OF WORK, 1981

	<u>Estill County</u>	<u>Clark County</u>	<u>Jackson County</u>
All Industries	\$233.12	\$276.94	\$208.36
Mining & Quarrying	461.82	431.41	353.67
Contract Construction	155.99	348.27	208.00
Manufacturing	200.95	332.14	185.98
Transportation, Communications & Public Utilities	228.65	404.06	268.12
Wholesale & Retail Trade	160.63	172.94	159.35
Finance, Insurance & Real Estate	244.41	223.22	*
Services	145.85	177.64	160.07
State/Local Government	219.49	225.75	192.85
Other	*	153.34	*
	<u>Lee County</u>	<u>Madison County</u>	<u>Powell County</u>
All Industries	\$237.17	\$224.83	\$213.96
Mining & Quarrying	362.62	*	344.23
Contract Construction	178.15	255.06	287.48
Manufacturing	161.13	297.64	207.58
Transportation, Communications & Public Utilities	325.30	273.95	323.90
Wholesale & Retail Trade	189.85	160.92	134.92
Finance, Insurance & Real Estate	*	218.91	*
Services	148.44	180.61	195.42
State/Local Government	212.68	248.33	202.05
Other	*	108.14	0

\*Not disclosed.

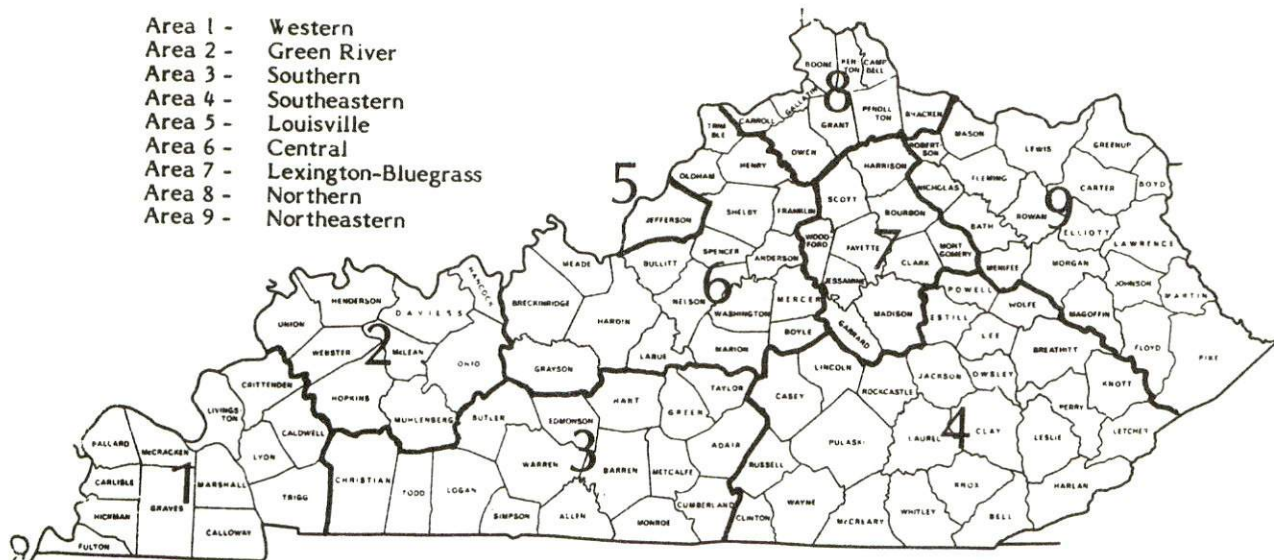
Note: Excludes domestic workers, railway workers, certain nonprofit corporations, majority of federal government workers, and self-employed workers.

Source: Kentucky Cabinet for Human Resources, Average Weekly Wages of Workers Covered by Kentucky Unemployment Insurance Law, 1981.



Occupational wage rates for specific industries are usually not available to most government agencies, and wage data furnished to state employment agencies by individual industrial employers are protected from disclosure by federal law. The most reliable up-to-date wage information can be obtained by direct contact with local employers.

Associated Industries of Kentucky, a voluntary organization of Kentucky businesses, regularly collects occupational wage rates and fringe benefits data from participating member firms. Data are compiled for over 127 clearly defined office, production, and service occupations. Tabulations are published for nine geographical areas of Kentucky, as shown on the map below. It should be noted that the data may be weighted by the preponderance of firms in the larger cities and may be somewhat higher than the rates paid in the smaller communities. Data from these tabulations are available, upon request, from the Kentucky Department of Economic Development, Frankfort, Kentucky 40601.



Associated Industries of Kentucky Area Wage Surveys

PER CAPITA PERSONAL INCOME

<u>Area</u>	<u>1976</u>	<u>1980</u>	<u>Percent Change</u>
Estill County	\$4,238	\$5,936	40.0
Labor Market Area			
Range	\$3,002 - 5,869	\$4,181 - 8,144	N/A
Kentucky	5,263	7,662	45.6
U. S.	6,367	9,511	49.4

Source: U. S. Bureau of Economic Analysis, Kentucky Economic Information System, June 1982.

## TRANSPORTATION

### Rail

Line serving Irvine and Ravenna - Seaboard System Railroad\*

Services - Main line; terminal; 6 northbound and 6 southbound freights make daily stops; switching facilities; team track space at Ravenna for 12 cars; unlimited siding space. Nearest piggyback facilities are operated by the Southern Railway System at Danville, 57 miles west of Irvine. Nearest Seaboard piggyback facilities are located at Frankfort, 73 miles northwest of Irvine.\*\*

For details on routing, schedules, rates, and services, contact:

Manager of Industrial Development  
Seaboard System Railroad  
P. O. Box 32290  
Louisville, Kentucky 40232  
(502) 587-5228

### Highways

Irvine and Ravenna are both served by Kentucky Route 52, a "AAA" rated, 80,000-pound gross load limit trucking highway. Irvine is also served by Kentucky Route 89.

The Mountain Parkway, a multi-lane toll road located 14 miles north of Irvine via Kentucky Routes 89 and 82, provides access to major east-west and north-south interstate and parkway systems. Kentucky Route 52 connects Irvine and Ravenna with Interstate 75, 23 miles west of Irvine near Richmond.

---

\*The Seaboard System Railroad has recently completed upgrading its yard and maintenance shop in Ravenna. The \$4 million dollar project also included a new car repair facility and the installation of a waste water treatment system to be used exclusively by the company.

\*\*The nearest piggyback service is available at Frankfort, 73 miles from Irvine and Ravenna. Seaboard provides piggyback service from Frankfort through the Louisville ramp with highway service substituted for rail between the two cities. Rates are charged from Frankfort.



## Truck Service

### Company

### Home Office

### Irvine and Ravenna

McLean Trucking Company\*

P. O. Box 213  
Winston-Salem, North Carolina 27102

Overnite Transportation  
Company\*\*

1000 Semmes Avenue  
P. O. Box 1216  
Richmond, Virginia 23209

Shepherd Truck Line, Inc.\*\* (T)

Winchester Road  
P. O. Box 117  
Irvine, Kentucky 40336

### Other Freight Services

### Nearest Shipping Center

Purolator Courier Corporation\*\*\*

Lexington, 46 miles distant

United Parcel Service\*\*\*\*

Clay City, 14 miles distant

## HIGHWAY MILES AND TRUCK TRANSIT TIME IN DAYS FROM IRVINE, KENTUCKY, TO SELECTED MARKET CENTERS

City	Highway Miles	Delivery		City	Highway Miles	Delivery	
		Time TL				Time TL	
Atlanta, Ga.	360	1		Los Angeles, Ca.	2,226	4	
Baltimore, Md.	552	2		Louisville, Ky	123	1	
Birmingham, Ala.	421	1		Nashville, Tenn.	256	1	
Chicago, Ill.	398	1		New Orleans, La.	763	2	
Cincinnati, Ohio	127	1		New York, N. Y.	724	N/A	
Cleveland, Ohio	363	1		Pittsburgh, Pa.	384	1	
Detroit, Mich.	383	N/A		St. Louis, Mo.	386	1	
Knoxville, Tenn.	167	1					

Note: Mileage computations are via the best interstate or primary highways, not necessarily the most direct route of travel.

Sources: Rand McNally Interstate Road Atlas, 1981. Official Kentucky Mileage Map, 1980. Delivery time: Overnite Transportation Company, P. O. Box 1216, Richmond, Virginia 23209.

(T) Terminal in Irvine.

\*Interstate service only.

\*\*Interstate and intrastate service.

\*\*\*For regular scheduled pickups or for occasional pickups, arrangements must be made with the Lexington office of Purolator Courier Corporation.

\*\*\*\*For regular scheduled pickups or for occasional pickups, arrangements must be made with the Louisville office of United Parcel Service.

## Air

### Nearest Small Craft\*

Stanton Airport  
Location: 1/2 mile east of Stanton, 20 miles northeast of Irvine  
Runways: One paved  
Length: 3,000 feet  
Traffic  
Control: Wind sock  
Lighting: Sunset to sunrise  
Services: 100 octane, hangar and tie down, 24-hour attended

### Nearest Scheduled Airline Service

Blue Grass Field  
Location: 4 1/2 miles west of Lexington, Kentucky; 50 miles northwest of Irvine  
Runways: 2 paved  
Length: 6,500 feet; 3,500 feet  
Traffic  
Control: Tower  
Lighting: Approach lighting system, beacon, runways and obstructions lighted, VASI  
Services: USAir, Delta, Piedmont, Frontier, Comair, Tennessee Airways; fuel - 80, 100LL, jet-A; hangars, tie-downs; major A & P repairs, major Avionics repairs; APU, charter, flight instruction, oxygen, plane rentals, survival equipment; taxi, limousine, car rentals, courtesy car; weather information; restaurant, snack bar

Air Freight  
Service: Air freight terminal

Bus - Nearest bus service is in Richmond, 21 miles west of Irvine, which is served by Greyhound Bus Lines.

Taxi - Two companies provide 24-hour service.

Rental Services - Nearest car, truck and trailer rentals are available in Richmond, 21 miles west of Irvine.

## Water

Irvine is located on the Kentucky River where a six-foot navigation channel is maintained. The nearest point on the Kentucky River which is navigable for commercial purposes is in Frankfort, 73 miles to the north-west.

\*The Southeast Coal Company maintains a private airport in Irvine. The airport has a 3,400-foot paved runway. The air strip is available to public use only when prior consent is arranged with Southeast Coal Company.

## POWER AND FUEL

### Electricity

Company serving Irvine, Ravenna and portions of Estill County -  
Kentucky Utilities Company

Source of power - Kentucky Utilities Company

Total generating capacity - 2,639,100 KW\*

For industrial rates contact:

Industrial Development Department  
Kentucky Utilities Company  
One Quality Street  
Lexington, Kentucky 40507  
(606) 255-1461

Companies serving Estill County - Jackson County Rural Electric Cooperative Corporation and Clark Rural Electric Cooperative Corporation

Source of power - East Kentucky Power Cooperative

Total generating capacity - 1,304,000 KW

For industrial rates contact:

Industrial Development Division  
East Kentucky Power Cooperative  
P. O. Box 707  
Winchester, Kentucky 40391  
(606) 744-4812

and/or

Jackson County RECC  
P. O. Box 307  
McKee, Kentucky 40447  
(606) 287-7161

and/or

Clark RECC  
P. O. Box 748  
Winchester, Kentucky 40391  
(606) 744-4251

\*A new generating unit is under construction in Carroll County. Due to be completed in 1984, the unit will have a generating capacity of 511,000 KW.



## Natural Gas

Company serving Irvine and Ravenna - Columbia Gas of Kentucky, Inc.

Source of supply - Columbia Gas Transmission Corporation

Size of transmission mains - 8-inch (supplier);  
4-inch (distributor)

Distribution mains - 2, 3, 4, 6 and 8 inches

Distribution pressure - 6 ounces

Btu content - 1,020 to 1,040 per cubic foot

Specific gravity - 0.6

For rates and supplies contact:

Columbia Gas of Kentucky, Inc.

P. O. Box 241

Lexington, Kentucky 40584

(606) 255-3612

## Other Fuels

### Propane (Within 21 miles)

Buckeye Gas Products  
Company (bulk plant)  
Edwards Avenue  
Richmond, Kentucky 40475

Home Furniture Company  
River Drive  
Irvine, Kentucky 40336

Crawford Gas and Appliances  
(bulk plant)  
Big Hill Avenue  
Richmond, Kentucky 40475

Southern States Cooperative  
(bulk plant)  
Irvine Road  
Richmond, Kentucky 40475

Hardy Gas  
Richmond Road  
Irvine, Kentucky 40336

Wards's Bottled Gas  
Edwards Avenue  
Richmond, Kentucky 40475

## Fuel oils

Distillate fuel oil -

Ashland Petroleum Company  
Main Street  
Ravenna, Kentucky 40472

West Tracy Oil Company, Inc.  
8th and Main  
Irvine, Kentucky 40336

Hardy Oil Company, Inc.  
(Texaco)  
River Drive  
Irvine, Kentucky 40336

Residual fuel oil - Arrangements must be made with the refinery.

Low sulphur content coal - Available locally.

## WATER AND SEWERAGE

### Public Water Supply

Company serving Irvine and Ravenna - Irvine Municipal Utilities\*  
239 Broadway  
Irvine, Kentucky 40336  
(606) 723-2197

Source - Kentucky River

Treatment plant capacity - 2,000,000 gallons per day

Average daily consumption - 850,000 gallons

Peak daily consumption - 1,106,000 gallons

Type treatment - Filtration, coagulation, sedimentation, and chlorination

Storage capacity - 1,200,000 gallons including clear well

Size lines - 2, 3, 4, 6, 8 and 10 inches

Average pressure - 45-50 psi

Average temperature - n/a

### MONTHLY WATER RATES

First	2,000 gallons	\$5.30 (Minimum)
Next	3,000 gallons	2.80 per M gallons
Next	5,000 gallons	2.50 per M gallons
Next	5,000 gallons	2.00 per M gallons
Next	10,000 gallons	1.70 per M gallons
All over	25,000 gallons	1.35 per M gallons

Tap-on charge: \$150

\*Irvine Municipal Utilities began operations of a new water treatment plant in March 1983. The new plant completely replaces the old plant. Also included in the \$1.9 million project was the construction of a new 500,000-gallon storage tank.

Name of water district - Estill County Water District # 1\*  
Rural Route 5  
Richmond Road  
Irvine, Kentucky 40336  
(606) 723-3795

Area served - Estill County, south of the Kentucky River

Date when water district began operating - 1964

Source of supply of treated water - Irvine Municipal Utilities

Average amount of water used in a 24-hour period - 235,000 gallons

Peak amount of water used in a 24-hour period - 250,000 gallons

Storage capacity - 355,000 gallons

Average pressure - 60 psi

Size lines - 2, 4, 6 and 8 inches

Monthly rates -

First	2,000 gallons	\$7.00 (Minimum)
Next	3,000 gallons	3.25 per M gallons
Next	5,000 gallons	3.15 per M gallons
All over	10,000 gallons	1.85 per M gallons

Tap on charge: \$250 for 5/8-inch or 3/4-inch meter

#### Raw Water

Surface water sources - Kentucky River

Average discharge - Kentucky River at Lock 14, at Heidelberg,

Kentucky, 3,646 cfs (49-years, unadjusted, USGS)

Expected ground water yield - 5 to 50 gpm in the central portion of Estill County adjacent to the Kentucky River and in the extreme northeast portion of the county; 5 gpm or less in the remainder of the county

\*During 1981 and 1982 approximately 2.5 miles of 2 and 4-inch line was added and enabled the water district to serve 40 additional homes. Tentative plans have been made to provide water service to Northern Estill County. This would include installing 17 miles of 2, 4 and 6-inch lines, a booster pump station and a 200,000 gallon storage tank. The planned project would cost an estimated \$800,000.



## Sewerage

Company serving Irvine and Ravenna - Irvine Municipal Utilities  
239 Broadway  
Irvine, Kentucky 40336  
(606) 723-2197

Design capacity - 600,000 gallons per day

Average daily flow - 350,000 gallons

Treatment - Primary

Type treatment - Aeration

Treated effluent discharged into - Kentucky River

Size of sanitary mains - 4, 6, 8, 10 and 12-inch

Rates - Based on monthly water usage

First	2,000 gallons	\$5.00 (Minimum)
Next	3,000 gallons	2.25 per M gallons
Next	5,000 gallons	1.90 per M gallons
Next	5,000 gallons	1.50 per M gallons
Next	10,000 gallons	1.12 per M gallons
Over	25,000 gallons	1.12 per M gallons

Tap-on charge: \$150

## CLIMATE

### Estill County

#### Temperature

Normal (30-year record)	55.2 degrees
Average annual 1981	54.2 degrees
Record highest, September 1954 (37-year record)	103.0 degrees
Record lowest, January 1963 (37-year record)	-21.0 degrees
Normal heating degree days (30-year record)	4,729
(Heating degree day totals are the sums of negative departures of average daily temperatures from 65 degrees F.)	

#### Precipitation

Normal (30-year record)	44.49 inches
Mean annual snowfall (37-year record)	16.70 inches
Total precipitation 1981	36.65 inches
Mean number days precipitation (.01 inch or more) (37-year record)	130
Mean number days thunderstorms (37-year record)	46

#### Prevailing Winds (17-year record)

South

#### Relative Humidity

1 a.m.	77 percent (17-year record)
7 a.m.	81 percent (18-year record)
1 p.m.	60 percent (18-year record)
7 p.m.	64 percent (18-year record)

Source: U. S. Department of Commerce, Environmental Science Services Administration, Climatological Data, 1981.  
Station of record: Lexington, Kentucky.

## LOCAL GOVERNMENT

### City

#### Irvine

Structure - Mayor - 4-year term; 6 council members - 2-year terms  
Budget 1982 - General Fund \$241,460  
                  Water and Sewer Fund 542,325  
Fees and licenses - Business licenses range from \$7 to \$200 per year  
                  with manufacturing firms - \$85 (exempt first five years)

#### Ravenna

Structure - Mayor - 4-year term; 6 council members - 2-year terms  
Budget 1982-83 - General Fund \$88,631  
Fees and licenses - Business licenses range from \$10 to \$300 per year

### County

Structure - County Judge/Executive - 4-year term;  
          3 magistrates - 4-year terms  
Budget 1982-83 - General Fund \$120,083; Road Fund \$287,908

### Assessed Value of Property, 1982\*

<u>Classes of Property</u>	<u>Irvine</u>	<u>Ravenna</u>	<u>Estill County</u>
Real Estate	\$20,061,620	\$3,678,920	\$99,203,094
Tangibles	6,599,941	1,500,490	33,189,909

\*Excludes Homstead Exemptions.



## Property Taxes

All property in Kentucky is assessed at 100 percent of fair cash value.

Land and buildings are taxed by the state and may be taxed by local jurisdictions. The state rate is \$0.224 per \$100 of assessed valuation.

Manufacturing machinery, raw materials inventories, pollution control equipment, and goods in the process of manufacture are not subject to local taxation. The state rate is \$0.15 per \$100.

Other tangible personal property owned by manufacturers (automobiles, trucks, finished goods, office furniture, office equipment) is taxed by the state at \$0.45 per \$100 and may be taxed by local jurisdictions.

Intangible personal property located in Kentucky (money in hand, shares of stock, notes, bonds, accounts receivable, and other credits) is taxed by the state at \$0.25 per \$100, and is not subject to local taxation.

Property stored in public warehouses in a transit status is not subject to local taxation. The state rate is only \$0.015 per \$100.

Private leaseholds in industrial facilities owned by cities or counties and financed by industrial revenue bonds are subject to a state tax of \$0.015 per \$100 of value (essentially the lessee's equity, adjusted for appreciation or depreciation). Local taxation is not permitted.

Combined State and Local Rates Per \$100 Valuation, 1982 \*  
(100% assessment)

	<u>Site Inside City of Irvine</u>	<u>Site Inside City of Ravenna</u>	<u>Site Inside Unincorporated Estill County</u>
1. Land and buildings	\$0.849	\$1.001	\$0.501
2. Mfg. machinery, raw materials, goods in process, pollution control equipment	0.150	0.150	0.150
3. Finished goods, office equipment, vehicles, other tangibles	1.103	1.255	0.755
4. Intangibles (accounts rec., notes, bonds, etc.)	0.250	0.250	0.250
5. Property stored in public warehouses in a transit status	0.015	0.015	0.015
6. Leaseholds in industrial revenue bond financed plants	0.015	0.015	0.015

Planning and Zoning

City agency - Irvine Planning and Zoning Commission  
 Zoning enforced - City of Irvine only  
 Subdivision regulations enforced - City of Irvine only  
 Local codes enforced - Building  
 Mandatory state codes enforced - Kentucky Plumbing Code, National Electric Code, Kentucky Boiler Regulations and Standards, Kentucky Building Code (modeled after BOCA code)

\*Kentucky Department of Economic Development.

## Safety

<u>Police</u>	<u>Irvine</u>	<u>Ravenna</u>	<u>Estill County</u>
Total staff	8	2	4
Radio-patrol cars	2	1	3

## Fire

### Insurance Services

Office, Public Protection Classification	7	7	9 and 10
Full-time staff	3 full-time	-	3
	2 part-time		
Volunteers	14	12	15

### Rescue Service\*

#### Estill County Rescue Squad:

Number of volunteers - 30

Equipment - Two 4x4 trucks, one van, two boats and motors, one generator, flood lights, grappling hooks and miscellaneous rescue equipment

Personnel training - Eight emergency medical technicians, other members are trained in basic first aid

## Refuse Collection and Disposal

	<u>Irvine</u>	<u>Ravenna</u>	<u>Estill County</u>
Type service	Municipal	Municipal	Private
Fee charged:			
residential	\$3 per month	\$3 per month	\$6 per month
business	Based on volume, \$5 minimum	\$4 per month	**
industrial	-	-	**
Collection frequency:			
residential	Once weekly	Once weekly	Once weekly
business	Based on volume	Twice weekly	Based on volume
industrial	-	-	Based on volume
Trash pickup	None	None	When needed (extra charge)
Disposal method	Landfill	Landfill	Landfill

\*An underwater rescue team is currently being formed in the Irvine and Ravenna area.

\*\*Most businesses and industries rent refuse dumpsters from local companies. The minimum charge is currently \$30 per month.



## EDUCATION

### Public Schools

#### Estill County

Total Enrollment (September 1982)	3,240
Elementary	1,715
Middle School	565
High School	960
Student-Teacher Ratio	21-1
Elementary	19-1
Middle School	20-1
High School	19-1
Percent High School Graduates to College (1982)	31.6
Expenditures Per Pupil (1981-82)	\$1,389.36
Bonded Indebtedness (June 30, 1981)	\$1,954,000

\*An expansion was completed in 1982 at the Estill County High School. Four additional classrooms were added at a cost of \$270,000. In addition, an outdoor physical education area which would include tennis courts, a football field and a track are tentatively planned for the high school.

### Area Colleges and Universities

<u>Name</u>	<u>Location (Miles distant from Irvine)</u>	<u>Enrollment (Fall, 1982)</u>	<u>Highest Degree Conferred</u>
Eastern Kentucky University	Richmond (21)	13,041	Masters, Specialist*
Berea College	Berea (33)	1,599	Baccalaureate
University of Kentucky	Lexington (46)	22,829	Doctorate, M.D., D.M.D., J.D.
Transylvania University	Lexington (46)	701	Baccalaureate**
Lexington Technical Institute	Lexington (46)	2,462	Associate
Lee Junior College	Jackson (52)	360	Associate

### Vocational Schools

Both the state vocational-technical schools and the area vocational education centers are operated by the Kentucky Department of Education. The state vocational-technical schools enroll persons full time who are at least 16 years of age and not in school. These students attend classes for six hours each day. The area vocational education centers are designed to accommodate high school students who are at least 15 years of age. These students attend vocational school for three hours each day. The state vocational-technical schools and the area education centers offer evening courses to enable working adults to upgrade current job skills.

(Contd.)

\*Joint doctoral degree programs are offered in cooperation with the University of Kentucky, Lexington. The degrees are issued by the University of Kentucky.

\*\*Courses in a masters degree program are taught on the Transylvania campus by faculty members of Xavier University of Cincinnati. The degree is issued by Xavier University.

Nearest State School

Location	Central Kentucky State Vocational- Technical School
Miles Distant	Lexington 46
Curriculum	Business and Office Clerical Secretarial Consumer and Home Economics Commerical Foods Health and Personal Services Occupations Cosmetology Dental Assistant Nurse's Aide Practical Nursing Surgical Technician Industrial Education Auto Body Repair Auto Mechanics Carpentry Drafting Electronics Graphic Arts Industrial Electricity Machine Shop Masonry Sheet Metal, Heating and Cooling Welding Learning Resource Center

The Lexington Technical Institute is a unit of Kentucky's community college system operating on the University of Kentucky campus. Courses parallel university offerings and are transferable to the Lexington U of K campus or to another 4-year institution either public or private. The Institute awards the Associate in Arts degree and the Associate in Applied Science degree.

The Associate in Applied Science Degree is awarded in the following programs: accounting technology; architectural technology; civil engineering technology; data processing technology (business option, science option); dental hygiene; dental laboratory technology; electrical engineering technology (electronics option); management technology (business option); mechanical engineering technology; nursing; radiologic technology; real estate; respiratory therapy; secretarial administration; transportation.



Nearest Area Education Center

	Madison County Area Vocational Education Center
Location	Richmond
Miles Distant	21 miles west of Irvine
Curriculum	Business and Office Clerical Secretarial Accounting/Management Industrial Education Auto Mechanics Drafting Machine Shop Welding

Arrangements can be made to provide training in the specific production skills required by an industrial plant. Instruction may be conducted either in the vocational school or in the industrial plant, depending upon the desired arrangement and the availability of special equipment.

## HEALTH

### Local Medical Personnel

Physicians - 5  
Dentists - 4

### Hospitals

<u>General Hospital</u>	<u>Location</u>	<u>Beds</u>
Marcum and Wallace Memorial Hospital	Irvine	26

General hospital facilities - Operating room, emergency room, diagnostic X-ray, OB section, laboratory, outpatient services, 8 bassinets, respiratory therapy, ultra sound, physical therapy and EKG

Medical staff - 5 doctors, 5 consulting doctors, 7 registered nurses, 3 licensed practical nurses, 2 X-ray technicians and 3 medical technologists

### Other Medical Facilities

The Estill Medical Clinic  
The Estill County Comprehensive Care Center

### Ambulance Service

Name - Estill County Ambulance Service  
Staff - 5 full-time EMT technicians  
Service - 24-hour service to all of Estill County  
Equipment - 2 full-equipped ambulances

### Public Health

Facility - Estill County Health Department  
Staff - 1 health environmentalist, 3 nurses (2 full-time, 1 part-time), 4 clerks (2 of whom are also outreach workers), 1 medical doctor (part-time), and 1 nutritionist

## OTHER LOCAL FACILITIES

<u>Communications</u>	<u>Irvine</u>	<u>Ravenna</u>
Telephone -	Continential Telephone Company of Kentucky	Continential Telephone Company of Kentucky
Services -	Standard	Standard
Telegraph -	Western Union	Western Union
Services -	Toll-free number, 1-800-325-5100	Toll-free number, 1-800-325-5100
Postal - U. S. Post Office		
Class -	First	Branch of Irvine Post Office
Mail recieved -	Once daily	
Mail dispatched	Once daily	
Newspapers -		
Weekly and circulation -	Citizen Voice and Times - 4,415 Estill County Tribune - 1,600	-
Other papers received from -	Lexington, Louisville, Richmond and Winchester	Lexington, Louisville, Richmond and Winchester
Radio -	WIRV-AM	
Stations received from -	Lexington, Louisville, Richmond and Winchester, Kentucky; Cincinnati, Ohio	Irvine, Lexington, Louisville, Richmond and Winchester, Kentucky; Cincinnati, Ohio
Television -		
Cable service		
Reception from -	Louisville and Lexington, Kentucky; Knoxville, Tennessee; Cincinnati, Ohio; Norton, Virginia; Atlanta, Georgia	Louisville and Lexington, Kentucky; Knoxville, Tennessee; Cincinnati, Ohio; Norton, Virginia; Atlanta, Georgia
Kentucky Educational Television -	Lexington-Richmond transmitter, Channel 46	Lexington-Richmond transmitter, Channel 46



## Library Services

Public Library - Estill County Public Library

Size collection - 23,343 volumes

Circulation, 1981-82 - 90,887

Services - Film strips, film programs, pictures, story hour, newspapers, magazines, microfilm, microfiche, reader-printer, records, meeting room, bookmobile services, talking books for the blind, reference services, hospital services, jail services, shut-in services, summer reading program, senior citizens programs, head start program, kindergarten material, community services, reference services, Interlibrary Loan, displays, audio-visual equipment

## Religious Institutions

### Irvine - Ravenna Area

Number of churches - Approximately 30  
Denominations - Catholic  
Christian  
Church of God  
Jehovah's Witnesses  
Methodist  
Nazarene  
Penecostal  
Primitive Baptist  
Southern Baptist

Nearest synagogues - Lexington, Kentucky, 46 miles northwest  
of Irvine  
Congregations - Adath Israel (reform)  
Ohavey Zion (traditional)

## Financial Institutions

<u>Banks</u>	<u>Assets</u>	<u>Deposits</u>	<u>Statement Date</u>
Citizens Guaranty Bank	\$13,080,000.00	\$11,579,000.00	12/31/81
Union Bank and Trust Company	29,913,188.33	25,466,184.01	6/30/82

<u>Savings and Loan Association</u>	<u>Assets</u>	<u>Savings Accounts</u>	<u>Statement Date</u>
Estill Federal Savings and Loan Association	\$11,072,664.37	\$10,430,370.39	6/30/82

## Hotels and Motels

### Estill County

Total number - 4  
Total rooms - 84

## Clubs and Organizations

American Legion  
Boy Scouts  
Colt League  
Daughters of the American Revolution  
Eastern Star  
Estill County Industrial Development Corporation  
Estill County Historical Society  
Estill County Rural Development Committee  
4-H  
Farm Bureau  
Future Farmers of America (FFA)  
Future Homemakers of America (FHA)  
Garden Club  
Girl Scouts  
Homemakers  
Kiwanis  
Little League  
Masons  
Pony League  
Veterans of Foreign Wars  
Women's Club

## RECREATION

### Local

Public recreational facilities in Irvine are provided at the Kiwanis Park. Facilities at this park include a tennis court, three baseball diamonds, a football field, and a public swimming pool. A public park in Ravenna contains a playground, a tennis court and three baseball diamonds. The Kentucky River provides opportunities for boating, fishing and swimming enthusiasts.

The Kiwanis Club opened a new park in Ravenna in 1981 which includes baseball fields and a picnic area.

Among private recreational facilities in the area are a country club with a 9-hole golf course, an indoor movie theater, a drive-in movie theater and a skating rink.

Some of the highlights of the county are the Estill County Fair, held annually in August; and the Kentucky River Folk Festival, an annual event held in September which features folk music, arts, crafts, entertainment booths, food and refreshments.

Estill County is located in an area that provides excellent recreational facilities. About half of the county's land is contained in the Daniel Boone National Forest. The Cottage Furnace Recreation Area and the Fitchburg Furnace, located in the northeastern part of the county, provide facilities for picnicking and camping as well as historical sites.

### Area (Within 55 miles)

At Bybee Pottery, located in Bybee, approximately 10 miles west of Irvine, craftsmen-potters have been creating unusual hand-made pottery for more than a century. Tours and retail sales are available

White Hall State Shrine, 28 miles west of Irvine near Richmond, one of the grand estate houses of post-Civil War Kentucky, is the Italianate mansion of Cassius Marcellus Clay, the early abolitionist and politician. Kentucky handcrafts are sold in the White Hall gift shop, only a short walk from the mansion.

Natural Bridge State Resort Park at Slade, approximately 30 miles east of Irvine, is a 1,899-acre park located in the Daniel Boone National Forest where cliffs and stone arches fill the landscape. The rugged awesomeness of the great Natural Bridge, the largest of 12 natural sandstone arches in the park, is the main attraction. The park has a 35-room resort lodge with a dining room and gift shop, efficiency and one-bedroom cottages, and 95 camping sites. Other facilities include a 54-acre lake, a swimming pool, picnic shelters and playgrounds, hiking trails, and a riding stable. A skylift going up to Natural Bridge is operated from April 15 to October 31 each year.



The spirit of Daniel Boone and his pioneers is reborn at Fort Boonesborough State Park in Boonesborough, 34 miles northwest of Irvine. In the re-created fort 16 pioneer crafts of the eighteenth century are demonstrated by Kentuckians using functioning antiques from the frontier era. Cabins are furnished as they would have been in the days of Boone and documentary films are presented which depict the struggle of the first Kentuckians to make the Kentucky wilderness a home. A gift shop within the fort offers for sale all the handcrafted items made at the fort, along with a wide variety of handcrafts from throughout Kentucky. Other recreational facilities and activities of the park include the finest sand beach on the Kentucky River with a modern bathhouse, sun deck, and snack shop; a modern camping area with 187 sites; a central service building housing showers, restrooms, and laundry facilities for campers; a pavilion with a gift shop and grocery inside and a playground and basketball, volleyball, and shuffleboard courts on the grounds; and planned daily activities and special events under the guidance of a trained recreation director. Near the park is the dock of the Dixie Belle sternwheel excursion boat which operates one-hour trips daily on the Kentucky River leaving from the Fort Boonesborough boat dock.

Lexington, 46 miles northwest of Irvine, offers a variety of cultural, sporting, and recreational activities. Thoroughbred and harness racing is presented at Keeneland Race Course and the Red Mile Harness Track during several meets each year. The University of Kentucky and Transylvania University offer a number of sporting events. The University of Kentucky basketball games are held at Rupp Arena, the world's largest basketball arena. Other attractions include Lexington Philharmonic Concerts, Lexington Children's Theatre, and plays performed by Broadway touring companies, all held in the recently renovated Opera House.

The Kentucky Horse Park, a park dedicated to horses and to man's love for horses, is located in Lexington. The park, which contains more than 1,000 acres of Kentucky Bluegrass, features the International Museum of the Horse; the Man O'War Memorial; an antique carriage display; horseback and pony rides; walking farm tours; horse-drawn tours; planned recreation; a restaurant; a gift shop; and a campground area, which offers swimming, tennis, and planned activities. Numerous special events are held year-round and include various horse shows, steeplechasing, dressage, polo games, and three-day eventing.

Waveland State Shrine, near Lexington, features an 1847 Greek Revival mansion depicting Kentucky lifestyles from the days of early settlers to the antebellum era of gentility and elegance as well as the Civil War and postwar periods. The shrine also includes the Kentucky Life Museum and a plantation village on ten acres with many shops and displays.

William Whitley House State Shrine, 53 miles southwest of Irvine near Stanford, is the first brick house west of the Allegheny Mountains, built 1787-94. Whitley laid out Kentucky's first race track here and started U. S. counterclockwise racing. The facility provides picnic and playground areas in a ten-acre park.

## COMMUNITY IMPROVEMENTS

The Seaboard System Railroad has recently completed upgrading its yard and maintenance shop in Ravenna. The \$4 million dollar project also included a new car repair facility and the installation of a waste water treatment system to be used exclusively by the company.

During 1981 and 1982, approximately 2.5 miles of 2 and 4-inch water line were added and enabled the Estill County Water District to serve 40 additional homes.

Tentative plans have been made by the Estill County Water District to provide water service to northern Estill County. This would include installing 17 miles of 2, 4 and 6-inch lines, a booster pump station and a 200,000-gallon storage tank. The planned project would cost an estimated \$800,000.

Irvine Municipal Utilities has completed a \$1.9 million project to expand and improve the water system serving Irvine and Ravenna. A new 2 million gallon per day water treatment plant was put into operation in March of 1983, replacing the existing plant. The project also included construction of a 400,000-gallon clear well and a 500,000-gallon water storage tank which increased total storage capacity to 1.2 million gallons.

An expansion was completed in 1982 at the Estill County High School. Four additional classrooms were added at a cost of \$270,000. In addition, an outdoor physical education area which would include tennis courts, a football field and a track are tentatively planned for the high school.

The Kiwanis Club has opened a new recreational park in Ravenna. The 40-acre park contains baseball fields and a picnic area.

A \$4.3 million housing project consisting of a 120-unit for low and moderate income families was completed in 1981.

A new weekly newspaper began publication in Estill County in July 1982. The new Estill County Tribune has a circulation of 1,600.

An underwater rescue team is currently being formed in Estill County.





Department of Economic Development

General Inquiries Bureau

100 East 100 South • Salt Lake City, Utah 84101 • Phone (801) 564-4270