

1994

Industrial Resources - Franklin County - Frankfort

Kentucky Library Research Collections
Western Kentucky University, spcol@wku.edu

Follow this and additional works at: https://digitalcommons.wku.edu/franklin_pty



Part of the [Business Administration, Management, and Operations Commons](#), [Growth and Development Commons](#), and the [Infrastructure Commons](#)

Recommended Citation

Kentucky Library Research Collections, "Industrial Resources - Franklin County - Frankfort" (1994). *Franklin County*. Paper 3.
https://digitalcommons.wku.edu/franklin_pty/3

This Report is brought to you for free and open access by TopSCHOLAR®. It has been accepted for inclusion in Franklin County by an authorized administrator of TopSCHOLAR®. For more information, please contact topscholar@wku.edu.

Franklin

Kentucky

Resources For Economic Development

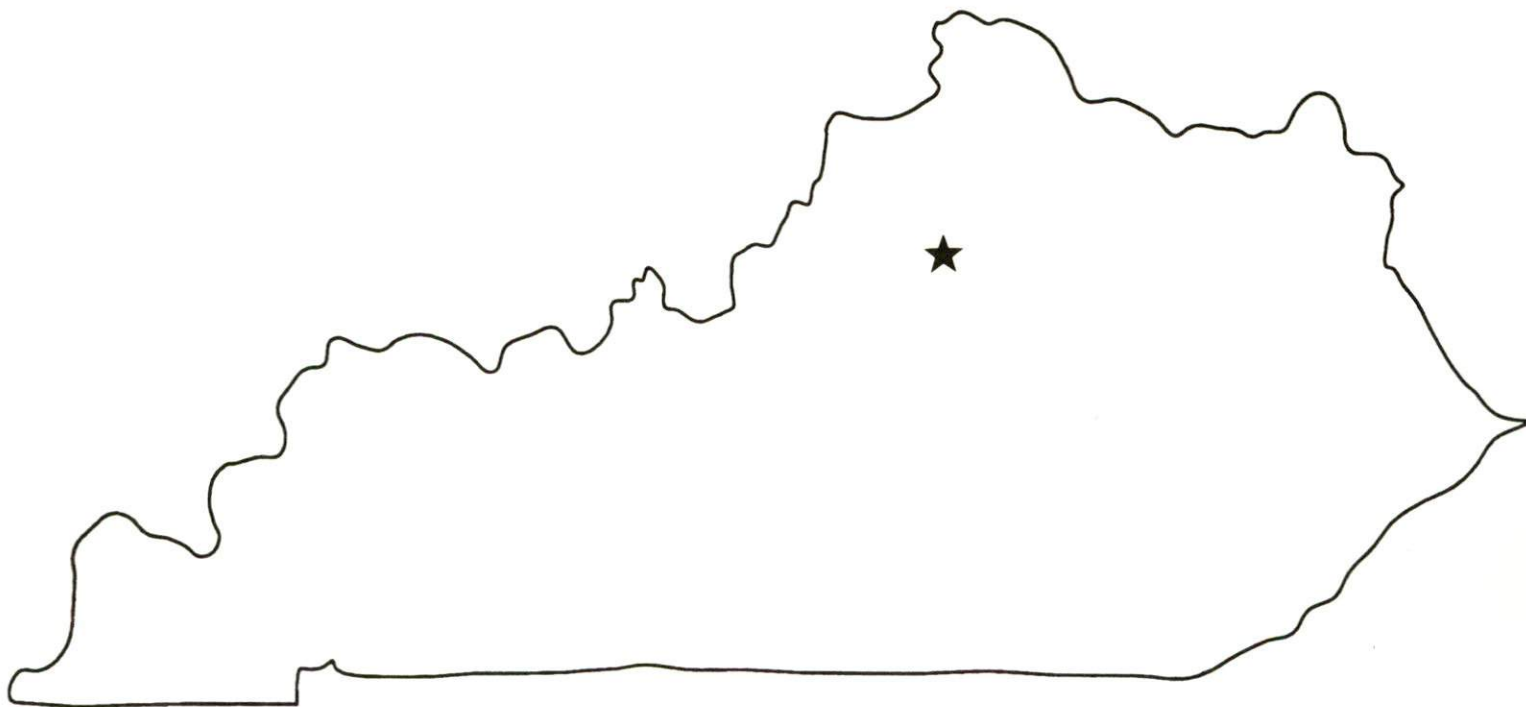
Frankfort

Albany
Barbourville
Ballard County
Bardstown • Booneville Berea
Bowling Green • Boyd & Greenup Counties
Bracken County • Brandenburg • Breckinridge
Brownsville • Bullitt County • Burkesville • Cadiz
Campbellsville • Campton • Carlisle • Carlisle County
Carrollton • Cave City • Clinton • Columbia • Corbin • Cynthiana
Danville • Dawson Springs • Edmonton • Elizabethtown • Estill County
Elliott County • Falmouth & Butler • Flemingsburg • Frankfort • Franklin
Frenchburg • Fulton County • Gallatin County • Georgetown • Grant County • Greensburg
Grayson & Olive Hill • Glasgow • Hancock County • Harlan County • Harrodsburg • Hart County
Hazard • Henderson • Henry County • Hodgenville • Hopkinsville-Christian County • Jackson County
Jackson • Knott County • LaGrange & Buckner • Lancaster • Lawrenceburg • Lebanon • Leitchfield-
Grayson County • Letcher County • Lexington • Liberty-Casey County • Logan County • Louisville
London • Louisa • Lyon County • Madisonville & Earlington • Manchester • Marshall County • Mayfield
Maysville • McCreary County • Marion • McLean County • Middlesboro & Pineville • Monticello • Morehead
Morgantown • Mt. Sterling • Mt. Vernon • Muhlenberg County • Murray • Nicholasville • Northern Kentucky
Ohio County • Owensboro • Owenton • Owingsville • Paducah • Paintsville • Paris • Pike County • Powell
Prestonsburg • Princeton • Radcliff • Richmond • Russell County • Scottsville • Shelbyville • Somerset
Springfield • Stamping Ground • Stanford-Lincoln County • Tompkinsville & Gamaliel • Taylorsville
Todd County • Union County • Vandenburg • Versailles • Webster County • West Liberty • Williamsburg
Winchester, Kentucky

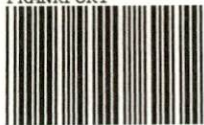
Kentucky

**Resources For
Economic Development**

Frankfort



FRANKFORT



CB34

Prepared by
The Kentucky Cabinet for Economic Development
Division of Research
in cooperation with
Frankfort Area Chamber of Commerce

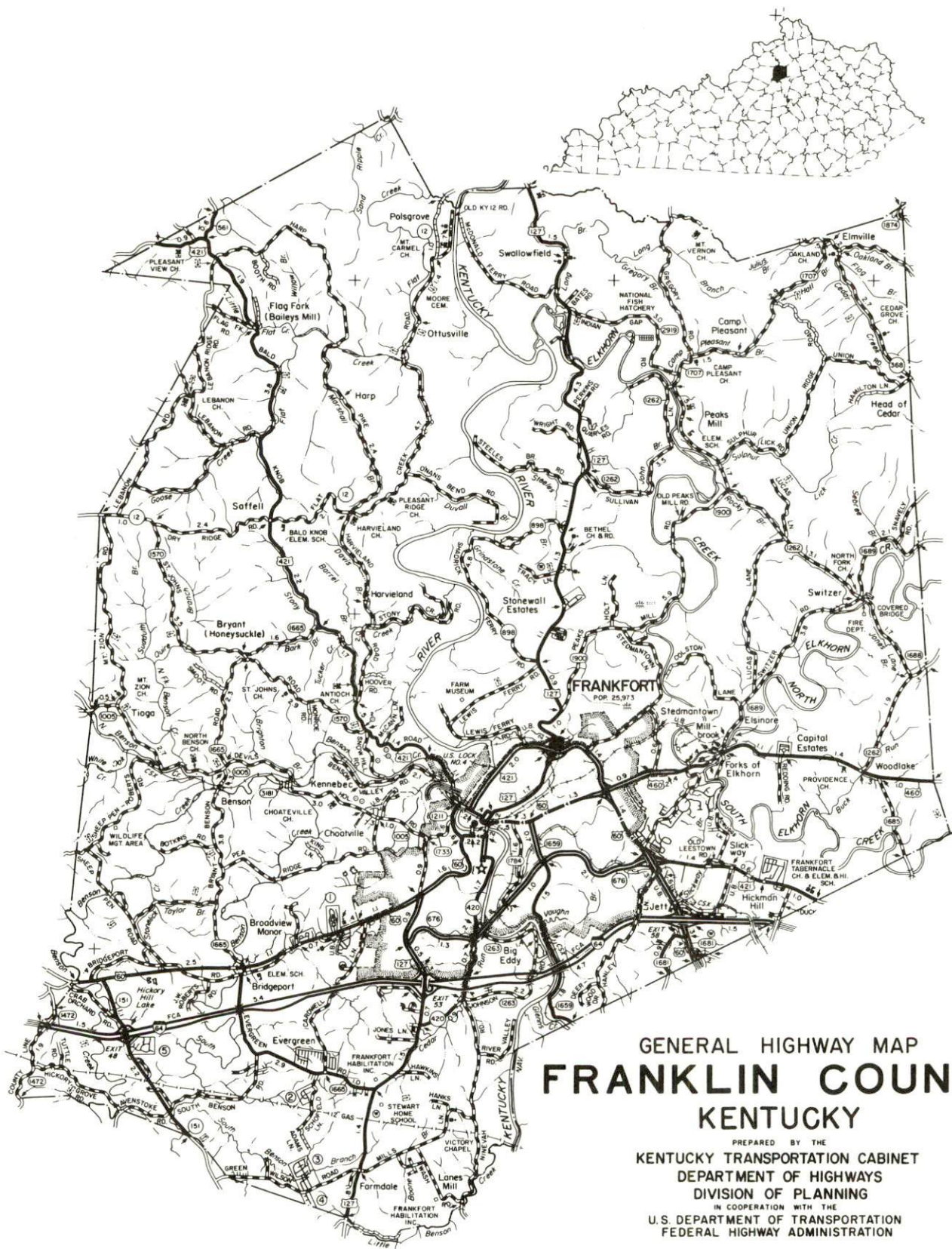
1994

Division Director - Pamela K. Riley; program manager - Keith Roberts; research - Keith Roberts; clerical - Wanda Sharp; graphics - Robert Owens. Cost of printing paid from state funds.

TABLE OF CONTENTS

<u>Chapter</u>	<u>Page</u>
FRANKFORT, KENTUCKY - A RESOURCE PROFILE	1
THE LABOR MARKET STATISTICS	2
Labor Market Area Map	2
Population.....	3
Population Projections	3
Estimated Labor Supply	3
Labor Force Characteristics of Residents, 1993.....	4
Selected Components of Nonagricultural Employment, by Place of Work, 1992.....	5
Per Capita Personal Income.....	6
Average Placement Wages.....	7
Average Weekly Wages of Workers Covered by Unemployment Insurance 1992 - Bar Chart	8
Average Weekly Wages by Industry, by Place of Work, 1992.....	9
EXISTING INDUSTRY.....	10
Frankfort Manufacturing Firms, Their Products and Employment	10
Recent Industrial Developments	11
Labor Organizations in Manufacturing Firms	11
Selected Industrial Services	12
TRANSPORTATION	13
Highways.....	13
Truck Service	13
Selected Market Location Map	14
Rail	15
Air	15
Water	16
UTILITIES	17
Electricity	17
Natural Gas	17
Public Water Supply	18
Sewerage.....	18
CLIMATE	19

<u>Chapter</u>	<u>Page</u>
LOCAL GOVERNMENT	20
Structure	20
Planning and Zoning	20
Local Fees and Licenses	20
State and Local Property Taxes	21
EDUCATION	22
Public Schools	22
Nonpublic Schools	22
Area Colleges and Universities	22
Vocational Training	24
OTHER LOCAL FACILITIES	26
Local Medical Personnel	26
Hospitals	26
Other Medical Facilities and Services	26
Banks and Savings & Loan Associations	26
Newspapers	26
Telephone Service	26
RECREATION	27



GENERAL HIGHWAY MAP
FRANKLIN COUNTY
KENTUCKY

PREPARED BY THE
KENTUCKY TRANSPORTATION CABINET
DEPARTMENT OF HIGHWAYS
DIVISION OF PLANNING
IN COOPERATION WITH THE
U.S. DEPARTMENT OF TRANSPORTATION
FEDERAL HIGHWAY ADMINISTRATION



FRANKFORT, KENTUCKY - A RESOURCE PROFILE

Frankfort, the capital of Kentucky and home of Kentucky State University, is located in central Kentucky's Bluegrass Region. Frankfort is the county seat of Franklin County and is located 28 miles west of Lexington, 54 miles east of Louisville; and 89 miles southwest of Cincinnati, Ohio. In 1992, Frankfort had an estimated population of 27,192.

Franklin County, with a rolling to hilly terrain, has a land area of 210 square miles. The Kentucky River traverses the center portion of the county, while Elkhorn Creek flows through eastern Franklin county. In 1992, Franklin County had an estimated population of 44,630.

The Economic Framework - The total number of Franklin County residents employed in 1993 averaged 23,442. In 1992, manufacturing firms in the county reported 3,657 employees; wholesale and retail trade provided 4,097 jobs; 3,424 people were employed in service occupations; state and local government accounted for 14,874 employees; and contract construction firms provided 877 jobs.

Labor Supply - There is a current estimated labor supply of 4,748 persons available for industrial jobs in the labor market area. In addition, from 1995 through 1999, 11,034 young persons in the area will become 18 years of age and potentially available for industrial jobs.

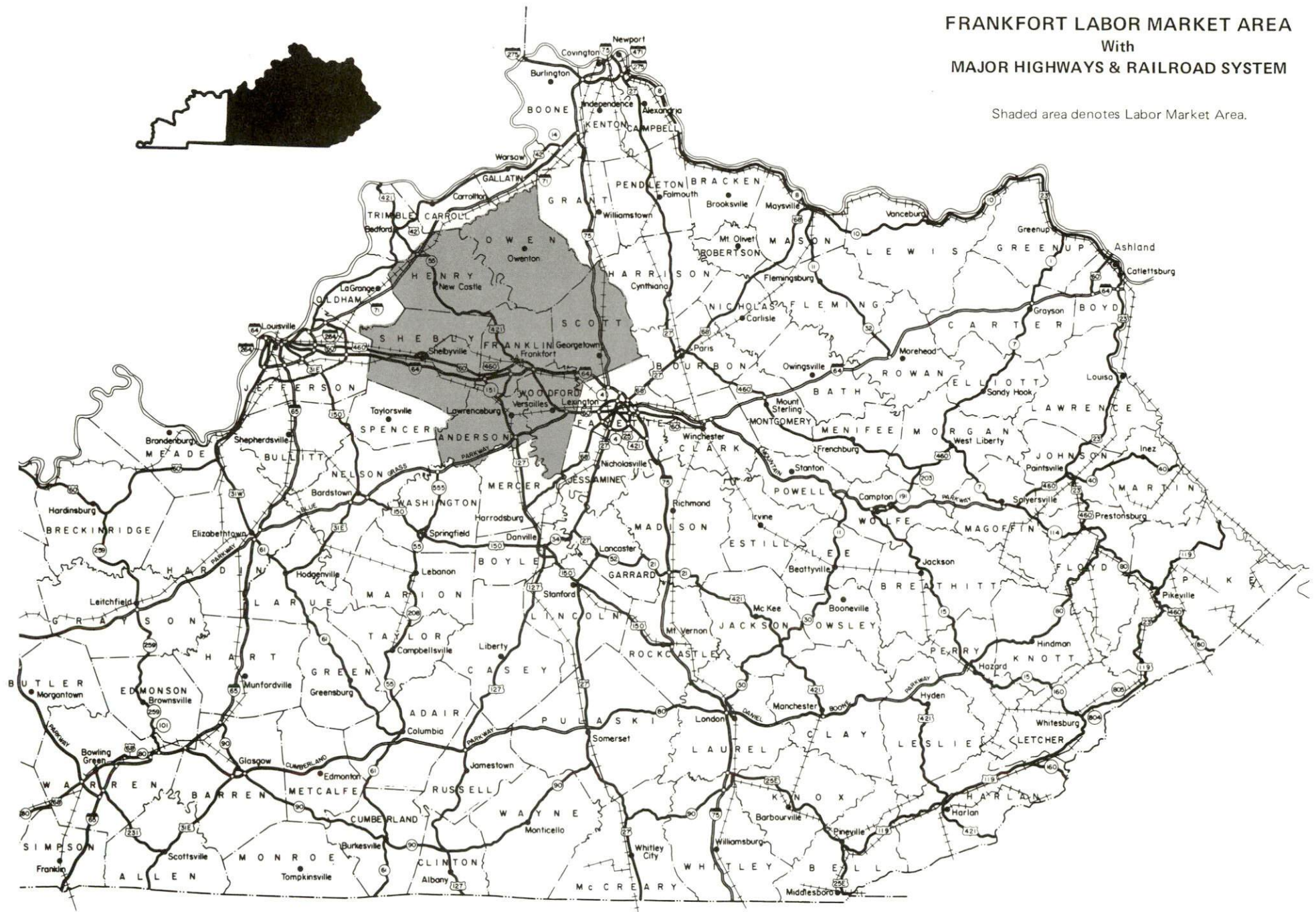
Transportation - Major highways serving Frankfort are Interstate 64; U.S. 60, U.S. 421, U.S. 127, U.S. 460; and Kentucky Highway 676, all of which are "AAA"-rated trucking highways. Thirty-six trucking companies provide interstate and/or intrastate service to Frankfort, while two trucking firms maintain terminals in Frankfort. Main line rail service is provided by CSX Transportation. The Capital City Airport maintains a 5,000-foot paved runway. The nearest scheduled commercial airline service is available at Blue Grass Airport, four miles west of Lexington and twenty-five miles east of Frankfort; and Standiford Field in Louisville, 54 miles west of Frankfort. Frankfort is located on the Kentucky River where a six-foot navigation channel is maintained.

Power and Fuel - The Frankfort Electric & Water Plant Board provides electric power, supplied by Kentucky Utilities Company, to Frankfort and portions of Franklin County. Franklin County is also served directly by Kentucky Utilities and by Fox Creek Rural Electric Cooperative Corporation, which is supplied by East Kentucky Power. Natural Gas is supplied to Frankfort by Columbia Gas of Kentucky, Inc.

Education - Primary and secondary education is provided by the Frankfort Independent School System and by the Franklin County School System. Both systems are accredited by the Southern Association of Colleges and Schools. There are three non-public schools in Franklin County. Kentucky State University, a small liberal studies oriented institution of higher learning, offers programs leading to two-year associate degrees, four-year baccalaureate degrees, and a masters program in public administration. There are thirteen additional colleges and universities within a 60-mile radius of Frankfort. Vocational training is provided by the Franklin County Area Vocational Education Center and the Central Kentucky State Vocational-Technical School in Lexington, 28 miles east of Frankfort.

FRANKFORT LABOR MARKET AREA With MAJOR HIGHWAYS & RAILROAD SYSTEM

Shaded area denotes Labor Market Area.



LABOR MARKET STATISTICS

The Frankfort Labor Market Area includes Franklin County and the adjoining Kentucky counties of Anderson, Henry, Owen, Scott, Shelby, and Woodford.

POPULATION				
	<u>1992*</u>	<u>1990</u>	<u>1980</u>	<u>1970</u>
Labor Market Area	155,053	149,218	138,980	113,600
Frankfort	27,192	26,535	25,973	21,902
Franklin County	44,630	44,143	41,830	34,481

* Population estimates.

Source: U.S. Department of Commerce, Bureau of the Census.

POPULATION PROJECTIONS				
	<u>1995</u>	<u>2000</u>	<u>2010</u>	<u>2020</u>
Labor Market Area	156,265	162,881	172,540	177,754
Franklin County	44,885	45,679	46,561	46,473

Note: Population projections are from Moderate Growth Series forecast.

Source: University of Louisville, Urban Studies Center, State Data Center.

ESTIMATED LABOR SUPPLY				
	Current		Not in Labor Force	Future
	<u>Total</u>	<u>Unemployed</u>		<u>Becoming 18 years of age 1995 thru 1999</u>
Labor Market Area*	4,748	3,588	1,160	11,034
Franklin County	1,040	1,040	0	2,971

* Additional workers may be drawn from other nearby counties.

Note: Unemployed - persons unemployed and actively seeking work; Not in Labor Force - represents the number of persons who would enter the labor force if suitable employment were available (based on the assumption that persons in Kentucky would like to participate in the labor force in the same proportion that they do nationally). Underemployed persons (employed only 14 to 26 weeks during the year) are no longer included in labor surplus estimates.

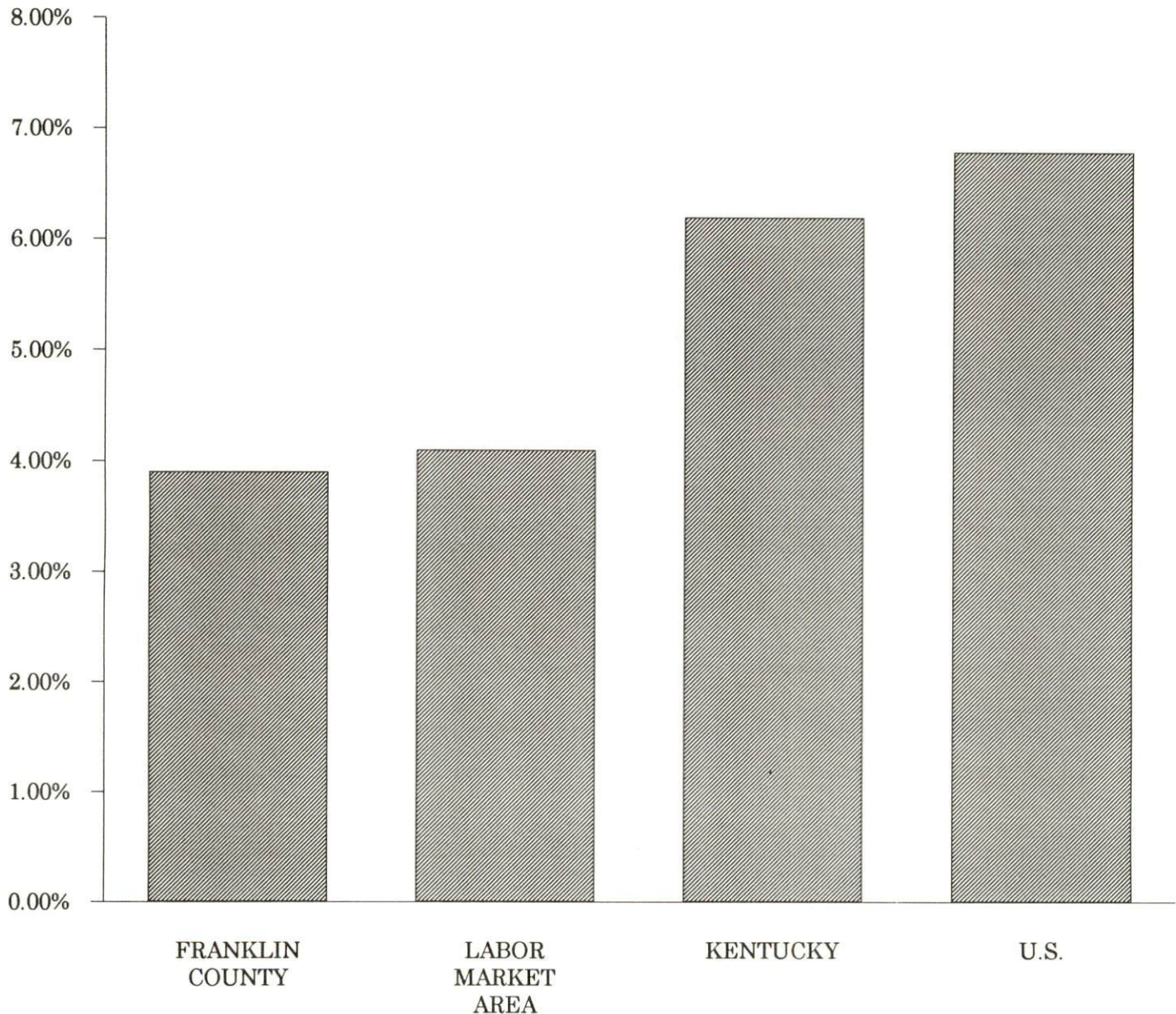
Sources: Kentucky Cabinet for Human Resources, Kentucky Labor Surplus Estimates by County, 1992. Kentucky Cabinet for Economic Development, Future Labor Supply Becoming 18 Years of Age, 1995 thru 1999.

LABOR FORCE CHARACTERISTICS OF RESIDENTS, 1993

	<u>Franklin County</u>	<u>Labor Market Area</u>
Civilian Labor Force	24,406	85,983
Employment	23,442	82,453
Unemployment	964	3,530
Rate of Unemployment (%)	3.9	4.1

Source: Kentucky Cabinet for Human Resources, Kentucky Labor Force Estimates, Annual Averages, 1993.

UNEMPLOYMENT RATES 1993

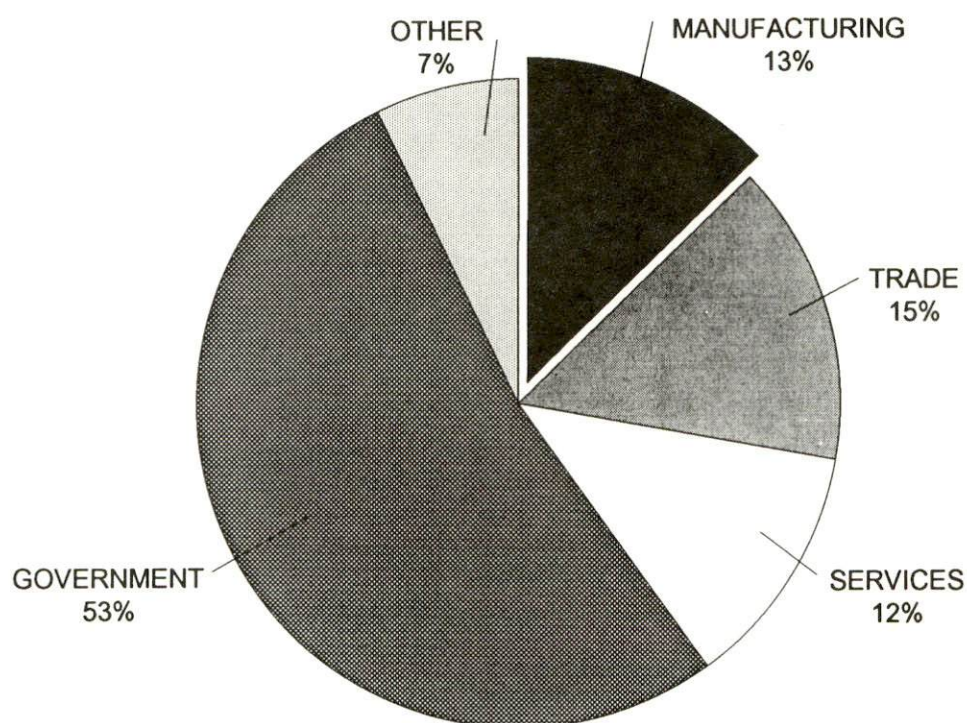


SELECTED COMPONENTS OF NONAGRICULTURAL EMPLOYMENT
BY PLACE OF WORK, 1992

	<u>Franklin County</u>	<u>Labor Market Area</u>
All Industries (total)	28,277	67,021
Manufacturing	3,657	19,377
Wholesale & Retail Trade	4,097	11,227
Services	3,424	9,351
State/Local Government	14,874	19,502
Contract Construction	877	2,241

Note: Excludes domestic workers, railway workers, certain nonprofit corporations, majority of federal government workers, and self-employed workers.
Source: Kentucky Cabinet for Human Resources, Average Monthly Workers Covered by Kentucky Unemployment Insurance Law, 1992.

FRANKLIN COUNTY

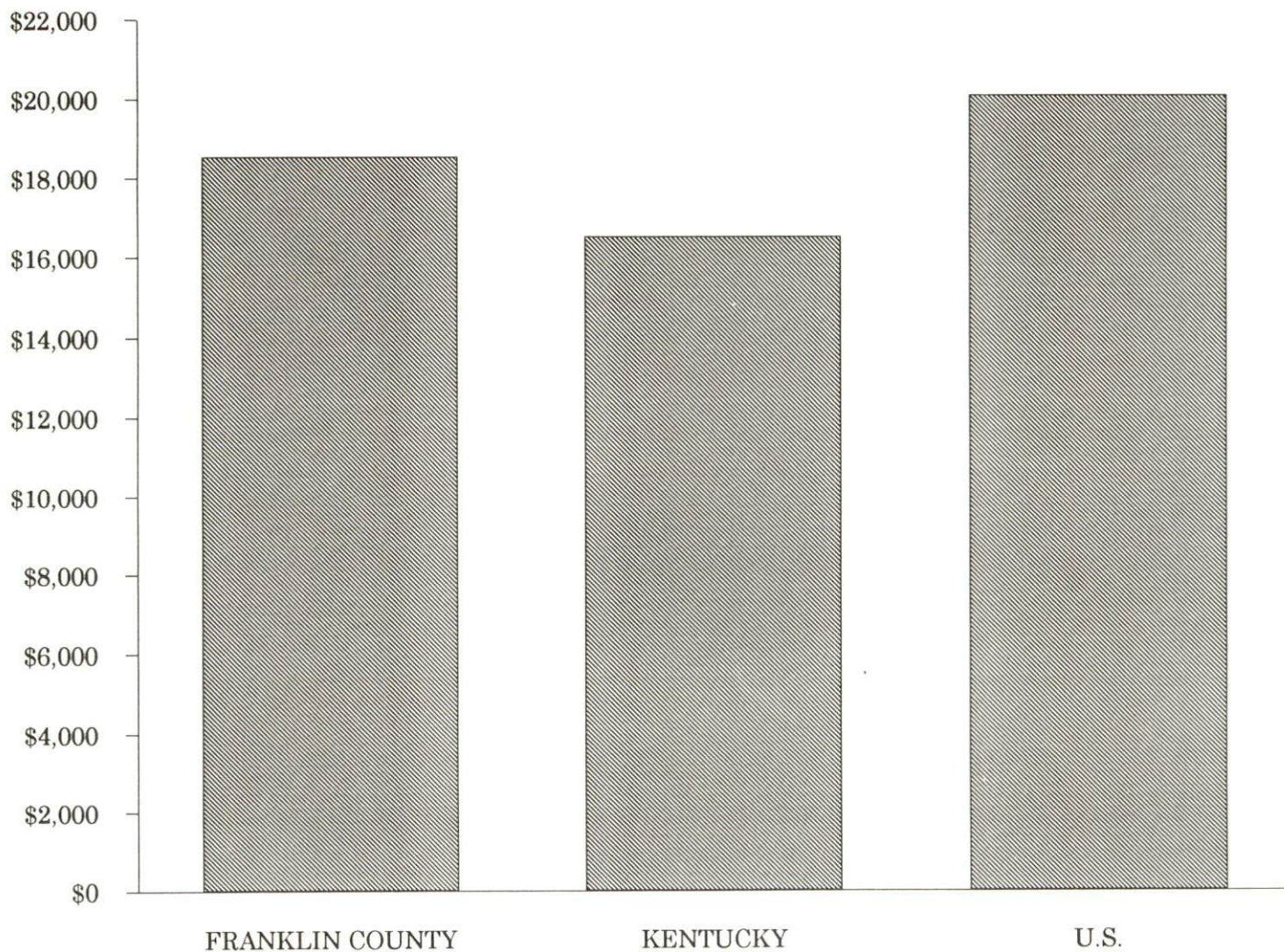


PER CAPITA PERSONAL INCOME

Area	1988	1992	Percent Change
Franklin County	\$14,458	\$18,539	28.2
Labor Market Area Range	\$9,629 - \$18,747	\$13,296 - \$21,219	-
Kentucky	\$12,751	\$16,528	29.6
U.S.	\$16,610	\$20,105	21.0

Source: U.S. Bureau of Economic Analysis, Regional Economic Information System, April 1994.

PER CAPITA PERSONAL INCOME
1992



AVERAGE PLACEMENT WAGES

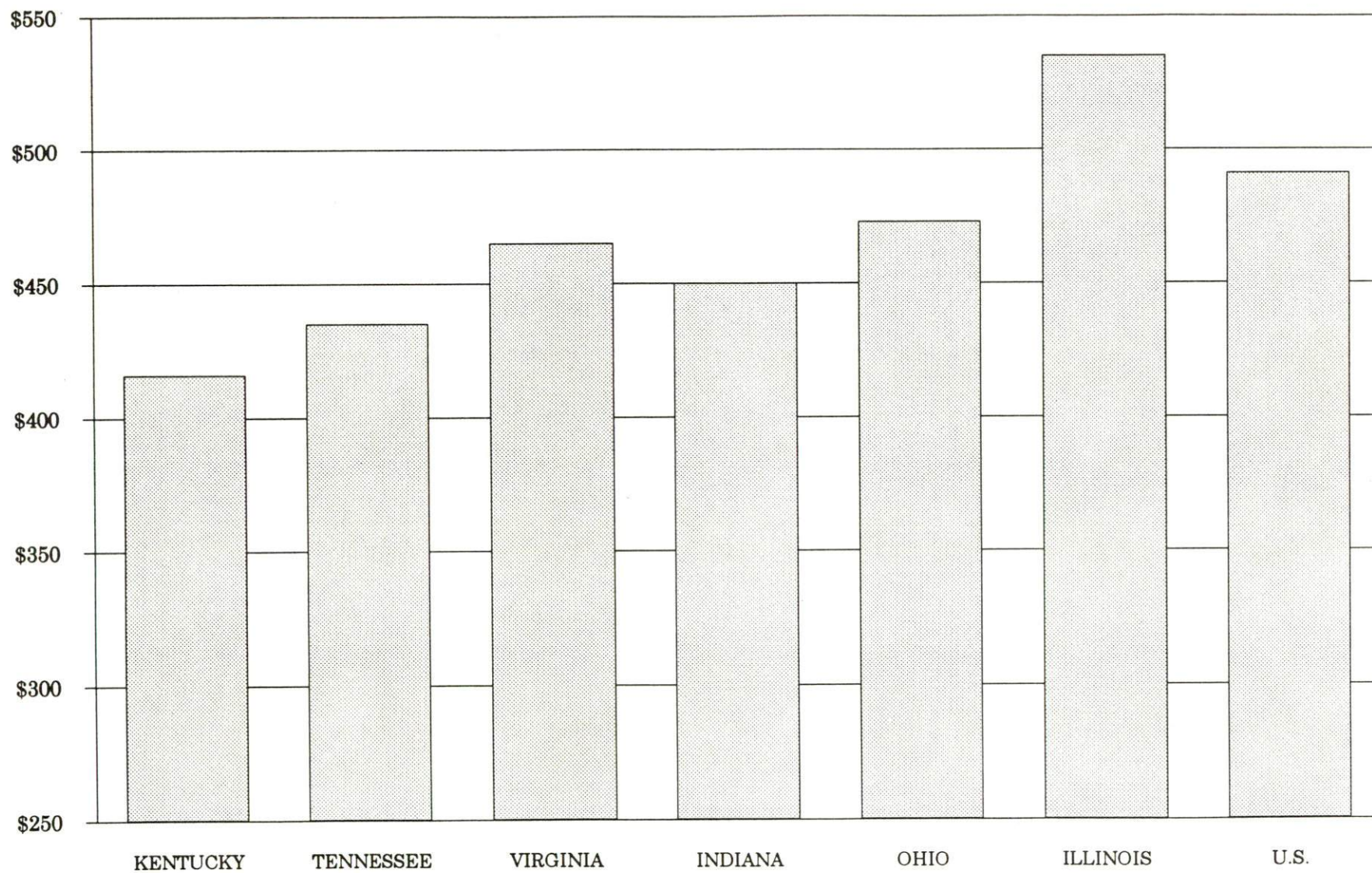
Franklin County is served by the Frankfort local office of the Kentucky Department for Employment Services. The focus of the following data is on job placements made by the Frankfort local office and may therefore be used as an indicator of the wages which employers in the area pay new employees. During the twelve months which ended on June 30, 1993, the local employment office filled 1,598 job openings in various occupational categories. The average hourly wage for selected occupational categories were:

<u>OCCUPATIONAL CATEGORY</u>	<u>NUMBER OF PLACEMENTS</u>	<u>AVERAGE WAGE(\$)</u>
All Occupations	1,598	5.55
Clerical	122	4.67
Sales	16	4.37
Services (excluding domestic)	246	4.58
Agricultural, Fishery, Forestry, etc.	31	6.96
Processing	38	7.71
Machine Trades	230	7.63
Bench Work	594	4.99
Structural	66	8.10
Motor Freight/ Transportation	18	5.65
Packaging and Materials Handling	177	5.30
Other	37	4.35

The Frankfort local office also serves Anderson and Woodford Counties. The above occupational categories are taken from the Dictionary of Occupational Titles published by the U.S. Department of Labor.

Source: Kentucky Cabinet for Human Resources, Department for Employment Services.

**AVERAGE WEEKLY WAGES OF WORKERS COVERED BY
UNEMPLOYMENT INSURANCE - 1992**



AVERAGE WEEKLY WAGES BY INDUSTRY
BY PLACE OF WORK, 1992*

	Franklin County	Kentucky (State- Wide)	Tennessee	Virginia
All Industries	\$433.33	\$415.94	\$435.00	\$465.00
Mining & Quarrying	0	685.48	564.00	690.00
Contract Construction	526.25	431.97	456.00	456.00
Manufacturing	463.78	535.73	510.00	535.00
Transportation, Communications & Public Utilities	616.94	560.84	561.00	637.00
Wholesale & Retail Trade	238.84	282.29	N/A	N/A
Finance, Insurance & Real Estate	408.66	493.68	548.00	576.00
Services	369.21	371.91	419.00	483.00
State/Local Government	486.56	434.01	N/A	N/A
	<u>Indiana</u>	<u>Ohio</u>	<u>Illinois</u>	<u>U. S.</u>
All Industries	\$450.00	\$473.00	\$535.00	\$491.00
Mining & Quarrying	731.00	639.00	787.00	799.00
Contract Construction	504.00	525.00	658.00	527.00
Manufacturing	609.00	653.00	652.00	612.00
Transportation, Communications & Public Utilities	548.00	590.00	674.00	632.00
Wholesale & Retail Trade	N/A	N/A	N/A	N/A
Finance, Insurance & Real Estate	511.00	545.00	728.00	670.00
Services	386.00	419.00	488.00	468.00
State/Local Government	N/A	N/A	N/A	N/A

* Wages for U.S. and surrounding states rounded to nearest dollar.

N/A Not Available.

Note: The average weekly wage for each category includes the salaries and wages of all persons working for that type business. For example, the manufacturing category includes both production workers and administrative personnel. Excludes domestic workers, railway workers, certain nonprofit corporations, majority of federal government workers, and self-employed workers.

Source: Kentucky Cabinet for Human Resources, Average Weekly Wages of Workers Covered by Kentucky Unemployment Insurance Law, 1992. U.S. Department of Labor, Bureau of Labor Statistics, Employment and Wages, Annual Averages, 1992, October 1993.

EXISTING INDUSTRY

FRANKFORT MANUFACTURING FIRMS, THEIR PRODUCTS AND EMPLOYMENT

<u>Firm</u> <u>(Establishment date)</u>	<u>Product</u>	<u>1993</u> <u>Average Employment</u>
Allied/Bendix Corporation (Heavy Vehicle Systems Group) (1967)	Air brake components	400
American Wire Products, Inc. (1990)	Roll forming, automotive wire products, metal stamping roll forming	150
Bottoms Engineering & Service, Inc. (1967)	Fabricated steel bridge grates, systems	8
Capital City Tool, Inc. (1973)	Plastic parts, machine shop	24
Frankfort Habilitation, Inc. (1972)	Pallets, wood furniture	100
Frankfort Materials Company (1964)	Bituminous concrete	7
Frankfort Plastics (1971)	Plastic parts, plastic compounds	328
Frankfort Publishing Company (1917)	Commercial printing, newspaper	42
Frankfort Tool & Die (1968)	Punch & press stamping, weldments, tool & fixtures	1
Fruit of the Loom, Inc. (1932)	Printed children's underwear, men's and boys' knit briefs and t-shirts	1,100
Goins Printing Services, Inc. (1972)	Offset printing	3
Harrod Concrete & Stone Company (1970)	Crushed stone, agricultural lime, ready-mixed concrete	130
Hulette Printing Company, Inc. (1962)	Commercial printing	5
Jim Beam Brands Company (1835)	Bottled distilled spirits	335
Lee Masonry Products (1964)	Precast concrete products, concrete block, hollow metal doors	25
Leestown Company, Inc. (1869)	Packaged beverages, distilled products, distillers dried grain	125
Lukjan Metal Products, Inc. (1972)	Sheet metal fabrication- duct, pipes, fittings	32
Metal Methods of Kentucky, Inc. (1980)	Specialty products, welding of thin metals, heat treating, brazing	21
Metal Werks (1992)	Custom metal fabricating	4
Mink Custom Woodworking (1989)	Custom woodworking, millwork	1

(Continued)

<u>Firm</u> <u>(Establishment date)</u>	<u>Product</u>	<u>1993</u> <u>Average Employment</u>
Ohi-America (1989)	Stamped automotive parts	425
Porritts & Spencer Western, Inc. (1983)	Papermakers wet felts	100
Rebecca Ruth Candy, Inc. (1929)	Candy, confectionery, gourmet chocolates	16
Rodgers Concrete Company, Inc. (1987)	Ready-mixed concrete	12
Topy Corporation (1985)	Automotive wheels (aluminum & steel)	460
Triangle Printing (1989)	Printed materials, rubber stamps	3
Trig, Inc. (1963)	Electric range components, emissions control components, thermal temp control devices	95
Webster Heating and Specialty Products, Inc. (1954)	Oil valves for heating industry, non-corrosive pumps, heating ignition transformers	120
Wise Industries, Inc. (1989)	Automotive metal components	50
World Wide Printing (1991)	Printed material	3

Sources: Kentucky Cabinet for Economic Development, Division of Research.

RECENT INDUSTRIAL DEVELOPMENT

A new Economic Development Authority was recently established to assist new and existing businesses and industry within Franklin County. The Authority is the result of a joint effort between city and county governments and private partnership. A full-time director is employed by the Authority to assist and recruit business and industry.

LABOR ORGANIZATIONS IN MANUFACTURING FIRMS

<u>Union</u>	<u>Representing workers at:</u>
Distillery, Wine, and Allied Workers' International Union, AFL-CIO-CLC	Jim Beam Brands Company; Leestown Company, Inc.
International Brotherhood of Firemen and Oilers, AFL-CIO	Jim Beam Brands Company; Leestown Company, Inc.
International Guards Union of America	Jim Beam Brands Company

(Continued)

UnionRepresenting workers at:

International Union, Allied
Industrial Workers of America,
AFL-CIO

Allied/Bendix Corporation;
Webster Heating and Specialty
Products, Inc.

International Association of
Machinists and Aerospace Workers,
AFL-CIO

Allied/Bendix Corporation;
Leestown Company, Inc.

United Association of Journeymen
and Apprentices of the Plumbing
and Pipe Fitting Industry of
the United States and Canada,
AFL-CIO

Jim Beam Brands Company

SELECTED INDUSTRIAL SERVICES

<u>Types of Services</u>	<u>Location</u>	<u>Mileage from Frankfort</u>
Custom Plastics Producers	Frankfort, Kentucky	-
Electric Motor Repair	Frankfort, Kentucky	-
Heat Treating Facilities	Frankfort, Kentucky	-
Industrial Waste Removal	Frankfort, Kentucky	-
Machine Shops, Tool & Die	Frankfort, Kentucky	-
Metal Castings	Cynthiana, Kentucky	39
Metal Finishers	Georgetown, Kentucky	18
	Lexington, Kentucky	28
Metal Service Centers	Lexington, Kentucky	28
Millwrights & Riggers	Lexington, Kentucky	28

Sources: Kentucky Cabinet for Economic Development, Division of Research.

TRANSPORTATION

Highways

Major "AAA"-rated (80,000-pound gross load limit) trucking highways serving Frankfort include Interstate 64, U.S. Highways 60, 127, 421, and 460; Kentucky Highway 676 and a portion of Kentucky Highway 1659. Interstate 64, a major east-west corridor, passes through Frankfort with interchanges southeast and southwest of the downtown area, and connects with Interstate 75, 22 miles east of Frankfort near Lexington. The Blue Grass Parkway is accessible 18 miles south of Frankfort via U.S. 127.

The reconstruction and widening (to four lanes) of U.S. 127, from Frankfort to the Blue Grass Parkway, has been completed.

HIGHWAY MILES FROM FRANKFORT, KENTUCKY, TO SELECTED MARKET CENTERS

City	Highway Miles	City	Highway Miles
Atlanta, GA	378	Los Angeles, CA	2,138
Baltimore, MD	555	Louisville, KY	54
Birmingham, AL	388	Nashville, TN	201
Chicago, IL	326	New Orleans, LA	723
Cincinnati, OH	89	New York, NY	733
Cleveland, OH	329	Pittsburgh, PA	361
Detroit, MI	342	St. Louis, MO	311
Knoxville, TN	193		

Note: Mileage computations are via the best interstate or primary highways, not necessarily the most direct route of travel.

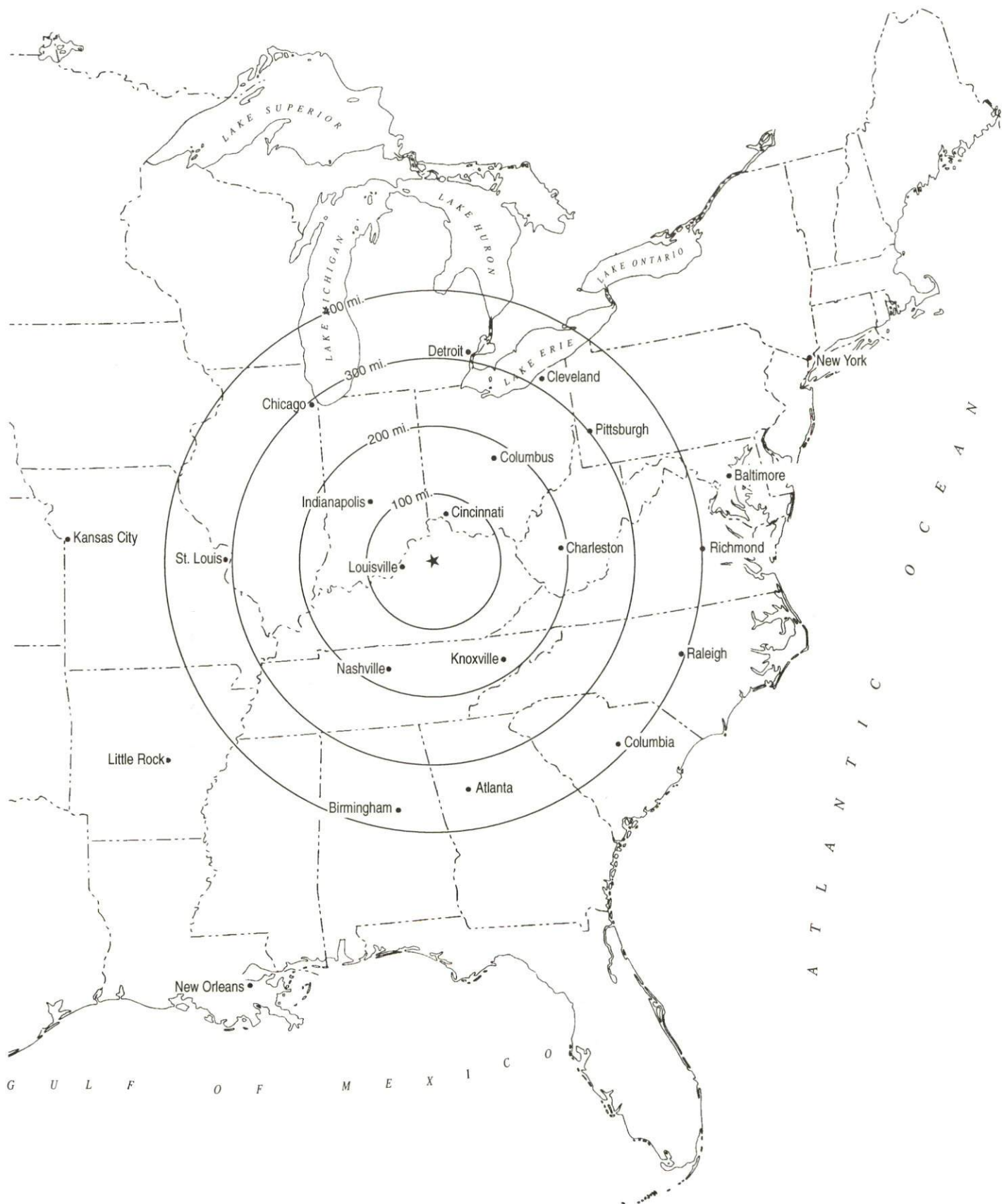
Sources: Rand McNally Standard Highway Mileage Guide, 1990. Official Kentucky Mileage Map, 1985.

Truck Service

Thirty-six common carrier trucking companies provide interstate and/or intrastate service to Frankfort. Two trucking companies maintain terminals in Frankfort.

Source: American Motor Carrier Directory, Spring 1994.

Selected Market Centers



Rail

CSX Transportation provides main line rail service to Frankfort. The nearest intermodal facility is provided by Norfolk Southern Corporation in Georgetown, 18 miles east of Frankfort.

For details on routing, schedules, rates, and services contact:

Manager
Industrial Development
CSX Transportation
9420 Bunsen Parkway
Suite 212
Louisville, Kentucky 40220
(502) 499-3025

Air

Local

Location:	Capital City Airport Frankfort
Runways:	One paved
Length:	5,000 feet (100 feet wide)
Traffic	
Control:	Wind sock
Lighting:	Beacon, runway lights sundown to sunrise, medium intensity runway lighting, REILS and VASI
Services:	100 octane and jet fuel, storage, major & minor A & P repairs, A.S.O.S., T-hangars, auto rental, taxi

Nearest Scheduled Commercial Airline Service

Location:	Blue Grass Airport 4 miles west of Lexington, Kentucky; 24 miles east of Frankfort
Air Service:	American Eagle, Atlantic Southeast, ComAir, Delta, Northwest Airlink, TW Express, United Express, USAir
Daily Arrivals & Departures:	120
Location:	Standiford Field 4 miles southeast of center of Louisville, Kentucky; 54 miles west of Frankfort
Air Service:	American, American West Express, American Eagle, ComAir, Continental, Continental Express, Midway, Midwest Express, Northwest, Northwest Airlink, Southwest, TWA, TW Express, United, USAir, USAir Express, Valujet
Daily Arrivals & Departures:	146

Water

A six-foot navigation channel is maintained on the Kentucky River at Frankfort. Frankfort is 54 miles from Louisville where the Louisville and Jefferson County Riverport Complex and Port of Louisville operate on the Ohio River.

UTILITIES

Electricity

Company serving **Frankfort and south central portion of Franklin County** - Frankfort Electric & Water Plant Board
Source of power - Kentucky Utilities Company
For industrial rates contact:

Frankfort Electric & Water Plant Board
315 West Second Street
P.O. Box 308
Frankfort, Kentucky 40602
(502) 223-3401

Company serving the **eastern portion of Franklin County** - Kentucky Utilities Company
Source of power - Kentucky Utilities Company
For industrial rates contact:

Economic Development Department
Kentucky Utilities Company
One Quality Street
Lexington, Kentucky 40507
(606) 255-2100

Company serving **western portion of Franklin County** - Fox Creek Rural Electric Cooperative Corporation
Source of power - East Kentucky Power
For industrial rates contact:

Industrial Development Department
East Kentucky Power
P.O. Box 707
Winchester, Kentucky 40392-0707
(606) 744-4812

and/or

Fox Creek Rural Electric Cooperative Corporation
P.O. Box 150
Lawrenceburg, Kentucky 40342
(502) 839-3442 or (800) 372-7160
Fax (502) 839-5051

Natural Gas

Company serving **Frankfort** - Columbia Gas of Kentucky, Inc.
Source of supply - Columbia Gas Transmission Corporation
For rates and supplies contact:

Economic Development Department
Columbia Gas of Kentucky
70 Fountain Place
Frankfort, Kentucky 40601
(502) 227-4998 Fax (502) 227-7645

Public Water Supply

Company serving Frankfort -	Frankfort Electric & Water Plant Board 315 West Second Street P.O. Box 308 Frankfort, Kentucky 40602 (502) 223-3401 Fax (502) 223-3887
Source -	Kentucky River
Treatment plant capacity -	18,000,000 gallons per day
Average daily consumption -	7,500,000 gallons
Peak daily consumption -	12,500,000 gallons
Storage capacity -	16,467,000 gallons
Water pressure -	30 psi to 140 psi

Sewerage

Company serving Frankfort -	City of Frankfort-Sewer Division 315 West Second Street P.O. Box 697 Frankfort, Kentucky 40602 (502) 875-8563 Fax (502) 875-8502
Design capacity -	6,600,000 gallons per day
Average daily flow -	5,850,000 gallons
Type of treatment -	Secondary
Treated effluent discharged into -	Kentucky River

The City of Frankfort-Sewer Division plans to expand the treatment capacity of the wastewater treatment plant to 9.9 million gallons per day. The \$4.0 million expansion is planned to begin in 1995 and be completed in the fall of 1996.

CLIMATE

Franklin County

Temperature

Normal (30-year record)	54.90 degrees
Average annual 1992	55.10 degrees
Record highest, July 1988 (48-year record)	103.00 degrees
Record lowest, January 1963 (48-year record)	-21.00 degrees
Normal heating degree days (30-year record)	4,814
(Heating degree day totals are the sums of negative departures of average daily temperatures from 65 degrees F.)	

Precipitation

Normal (30-year record)	45.68 inches
Mean annual snowfall (48-year record)	15.50 inches
Total precipitation 1992	49.09 inches
Mean number days precipitation (.01 inch or more) (48-year record)	129.80
Mean number days thunderstorms (48-year record)	44.70

Prevailing winds (through 1963)

South

Relative Humidity (29-year record, except 1 a.m. - 28-year record)

1 a.m.	77 percent
7 a.m.	82 percent
1 p.m.	60 percent
7 p.m.	64 percent

Source: U.S. Department of Commerce, Environmental Science Services Administration, Climatological Data, 1992. Station of record: Lexington, Kentucky.

LOCAL GOVERNMENT

Structure

Frankfort's municipal government is a council-manager form consisting of a mayor, who serves a four-year term; and four commissioners, who serve two-year terms; and a city manager. Franklin County is served by a county judge/executive and six magistrates, each serving a four-year term.

Planning and Zoning

Joint agency - Frankfort-Franklin County Planning Commission

Participating cities - Frankfort

Zoning enforced - All areas

Subdivision regulations enforced - All areas

Local codes enforced - Building (All areas) Housing (City only)

Mandatory state codes enforced - Kentucky Plumbing Code, National

Electric Code, Kentucky Boiler Regulations and Standards, Kentucky

Building Code (modeled after BOCA code)

Local Fees and Licenses

The City of Frankfort and Franklin County each levy an occupational license fee of one percent on all salaries, wages, commissions and other compensation earned by individuals in the city and county for work done or services rendered, and one percent on the net profits of all businesses, professions or other activities conducted in both the city and the county. The fee is payable to either the city or county, depending on whether employment or business is within city limits or unincorporated areas, but not subject to both.

Business license fees for businesses located within the City of Frankfort are \$10 annually. Some businesses are required to obtain an additional regulatory license. These licenses range from \$10 to \$500 annually.

PROPERTY TAXES

The Kentucky Constitution requires the state to tax all classes of taxable property, and state statutes allow local jurisdictions to tax only a few classes. All locally taxed property is subject to county taxes and school district taxes (either a county school district or an independent school district). Property located inside of city limits may also be subject to city property taxes.

Special local taxing jurisdictions (fire protection districts, watershed districts, and sanitation districts) levy taxes within their operating areas (usually a small portion of community or county).

Property assessments in Kentucky are at 100% fair cash value. Accounts receivable are taxed at 85% of face value.

STATE PROPERTY TAX RATES PER \$100 VALUATION

<u>Selected Classes of Property</u>	<u>1993 State Rate</u>	<u>Local Taxation Permitted</u>
Real Estate	\$0.180	YES
Manufacturing Machinery	0.150	NO
Pollution Control Equipment	0.150	NO
Inventories		
Raw Materials	0.050	NO
Goods in Process	0.050	NO
Finished Goods	0.050	YES
Motor Vehicles	0.450	YES
Other Tangible Personal Property	0.450	YES
Intangibles (Accounts Receivable, Money on Hand)	0.250	NO

LOCAL PROPERTY TAX RATES PER \$100 VALUATION, 1993

<u>Taxing Jurisdiction</u>	<u>Real Estate</u>	<u>Finished Goods & Tangibles</u>	<u>Motor Vehicles</u>
Franklin County	\$0.1913	\$0.2222	\$0.2280
School Districts:			
Franklin County	0.4340	0.4430	0.5100
Frankfort Independent	0.4200	0.4200	0.3840
Cities:			
Frankfort	0.2100	0.2100	0.2270

EDUCATION

Public Schools

	Frankfort Independent	Franklin County
Total Enrollment (Fall, 1993)	873	6,101
Pupil-Teacher Ratio (1991-92)	14.3-1	17.4-1
Percent High School Graduates to College (1991-92)	45.5	74.3
Expenditures Per Pupil (1991-92)	\$5,242.47	\$3,549.86

The Frankfort Independent School System plans to renovate and expand the high school. The expansion will include: four new classrooms, a cafeteria, home economics lab, new library facility, and vocational area.

Nonpublic Schools

<u>School</u>	<u>Enrollment</u>	<u>Grades</u>
Good Shepherd	288	K-8
Capital Day	185	P-8
Montessori	34	K-5

Area Colleges and Universities

<u>Name</u>	<u>Location (Miles distant)</u>	<u>Enrollment (Fall, 1993)</u>
Kentucky State University	Frankfort	2,487
Midway College	Midway (12)	932
Georgetown College	Georgetown (18)	1,383
Lexington Community College	Lexington (28)	5,046
Transylvania University	Lexington (28)	917
University of Kentucky	Lexington (28)	24,288
Asbury College	Wilmore (35)	1,155
Centre College	Danville (42)	949
Saint Catharine College	Springfield (50)	386
Eastern Kentucky University	Richmond (52)	16,391
Bellarmino College	Louisville (54)	2,943
Jefferson Community College	Louisville (54)	11,184
Spalding University	Louisville (54)	1,221
University of Louisville	Louisville (54)	21,826

Kentucky State University

Kentucky State University, located in Frankfort, is Kentucky's unique, small, liberal studies-oriented institution of higher learning. The University offers academic programs leading to two-year associate degrees, four-year baccalaureate degrees, and the masters degree in public administration. KSU provides pre-professional instruction, and Kentucky dentistry, medical, and law schools reserve a percentage of their admissions for KSU graduates. The first phase of a five-year engineering degree program is also offered in cooperation with the University of Kentucky, Vanderbilt University, the University of Maryland-College Park, and Florida A & M University. The Whitney Young College of Leadership Studies at KSU offers a unique program of study based upon the Great Books of the Western World. A continuing education program, evening and off-campus classes, credit for KET college telecourses, and other specialized programs are offered through the University's Community Programs to meet the varied needs and interests of the area. The University is the home of the Governmental Service Center, which develops, coordinates, and implements state government manager training programs. Kentucky State University has developed an excellent program in International Studies.

The Community Research Service conducts U.S. Department of Agriculture-sponsored research in agriculture and natural resources, human nutrition and home economics, plant and soil science, rural development and sociology, and agricultural marketing. The Cooperative Extension Program provides assistance to limited-resource farmers, homemakers, families, youth and communities in Franklin and 29 other Kentucky counties. An addition to the University's public service efforts is the Center of Excellence for Quality. The Center sponsors seminars and forums and other educational activities designed to assist public and private enterprises with developing quality services and products.

Kentucky State University has embarked on an ambitious mission to establish a research center to study the history and culture of Kentucky African Americans. Known as CESKAA, the Center will work to establish and develop major archival holdings on a variety of African diasporic materials. It will be research driven with the goal of generating published papers, monographs, journals, newsletters, and research grant proposals.

Kentucky State University has recently undertaken two major building projects totaling \$14.5 million. The Cooperative Extension building completed Fall 1993 is used in teaching better farming techniques. It has a demonstrating kitchen to assist in the preparation and preserving of food, and a high-tech communications center.

The Exum Building, under construction, is a 120,000 square-foot Health, Physical Education and Recreation facility which will feature an Olympic-size pool, three full-size basketball courts, gymnastics area, weight room, twelve classrooms and a 3,000-seat convocation assembly hall.

VOCATIONAL-TECHNICAL TRAINING

Kentucky Tech schools are operated by the Cabinet for Workforce Development and provide secondary (Sec) and postsecondary (P/S) vocational-technical training.

<u>Local Vocational Schools</u>	<u>Location (Mileage from Frankfort)</u>	<u>Number of Program Offerings</u>	<u>Cumulative Enrollment 1992-1993</u>	<u>Approximate Number Completing Programs Annually</u>
Franklin County Area Vocational Education Center	Frankfort	5	<u>Sec</u> 173 <u>P/S</u> 2	1

Kentucky Tech System

Central Kentucky State Vocational- Technical School	Lexington (28)	18	<u>P/S</u> 1,061	269
---	----------------	----	---------------------	-----

A five-million dollar expansion was completed at Kentucky Tech-Central in the fall of 1992. The expansion includes a new manufacturing technology building that houses manufacturing related programs such as machine tool technology, computer-aided drafting, electronics and industry electrical technology. A computer-integrated work cell laboratory in one room of the building links all the programs, simulating the operation of an actual manufacturing plant. Applied physics, hydraulics and quality control applications are integrated into the curriculum. Another room in the building can be used by business and industry for start-up and new production training.

Moving all manufacturing-related training into one building provided space for Kentucky Tech-Central to add health care programs as part of its expansion. These include medical imaging, medical assisting, bio-medical technician and laboratory technician programs.

Customized Training

The Kentucky Tech system, through its Training and Development Coordinators, will provide technical assistance and will identify and develop low-cost customized training programs and services for both established and prospective businesses. Businesses wanting to establish a customized training program should simply contact a Training and Development Coordinator located on the campus of Kentucky Tech Central SVTS.

Assessment Services

Kentucky Tech Career Connections offers to business, education, and government agencies customized assessment in career inventories, interest inventories, psychomotor skills and academic potential, as well as pre-hire assessment. A Career Connections Assessment Center is located on the campus of Tech Central Kentucky SVTS.

Tech Prep

Tech Prep is a combined secondary and postsecondary program of studies that leads to an associate degree or diploma in a vocational-technical field. The Franklin County School system is currently in the second-year implementation of its tech prep program in Home Economics, Technical Education and Business Education. Frankfort Independent Schools, as a member of the Bluegrass Tech Prep Consortium, is in the second-year implementation of a tech prep program in Business Education, Health Services, Engineering and Architecture.

Adult Education Services

Adult education programs are available to adults who want to develop new skills, improve basic skills or earn a high school equivalency diploma. In Frankfort, adult education and adult literacy are provided through the Thornhill Adult Learning Center.

Bluegrass State Skills Corporation

The Bluegrass State Skills Corporation, an independent public corporation created and funded by the Kentucky General Assembly, provides programs of skills training to meet the needs of business and industry from entry level to advanced training, and from upgrading present employees to retraining experienced workers.

The Bluegrass State Skills Corporation is a major source for skills training assistance for a new or existing company. The Corporation works in partnership with other employment and job training resources and programs, as well as Kentucky's economic development activities, to package a program customized to meet the specific needs of a company.

OTHER LOCAL FACILITIES

Local Medical Personnel

Physicians - 65
Dentists - 22

Hospitals

<u>General Hospital</u>	<u>Location</u>	<u>Beds</u>
Bluegrass Regional Medical Center	Frankfort	190

Medical staff - 45 active physicians, 22 physicians on courtesy staff,
129 registered nurses, 3 licensed practical nurses

In March of 1994, the Medical Center completed a \$3.3 million emergency room/outpatient area expansion/renovation (9,852 square feet new, 5,730 square feet renovated). This project added additional capabilities including a decontamination station, ER Trauma room, dedicated ER X-ray room, ER Orthopedic treatment room, ER Pediatric treatment room, Outpatient surgery staging area, dedicated mammography suite, consolidated registration area, and larger ER and outpatient waiting areas. Other 1994 construction projects include renovation and addition of endoscopic surgery suites.

Other Medical Facilities and Services

Capital Radiation Therapy Center
Capital Surgical Clinic
Comprehensive Care Center
Dialysis Clinic, Inc.
Frankfort Physical Therapy Clinic
Franklin County Health Department
Franklin County Home Health Agency
Franklin Medical Center

The Franklin County Health Department recently completed construction of an \$800,000 addition. The expansion doubled the size of the facility.

Banks and Savings & Loan Associations

The Cumberland
Farmers Bank and Capital Trust Company
First Federal Savings Bank of Frankfort
Republic Savings Bank
State National Bank

Newspapers

State Journal (daily)
Buyers Guide (weekly)

Telephone Service

South Central Bell

RECREATION

Local

The city of Frankfort provides excellent recreational facilities and organized programs for the youth, adults, and senior citizens of the community. A full-time staff organizes and promotes supervised sporting activities each year. The recreation department sponsors youth and adult softball leagues and Instructional, Minor, Little, Babe Ruth, and Senior Babe Ruth baseball leagues. In addition, there are tennis leagues, archery club, croquet club, volleyball leagues, and golf.

The recreation department also maintains three multi-facility parks. Juniper Hills Park has an 18-hole golf course, pro-shop, an Olympic-size swimming pool, a lighted softball field, four lighted tennis courts, two lighted volleyball courts, picnic facilities, two playgrounds, horseshoe pits, a basketball court, a tree arboretum, a shelter, and a gazebo.

East Frankfort Park has a swimming pool, four lighted tennis courts, lighted minor league and instructional league baseball fields, a lighted softball field, concrete and sand volleyball courts, nature trails, playground equipment, picnic facilities and two shelters. The park also includes a playground with therapeutic equipment.

The Capital View Park includes three lighted softball fields, volleyball courts, two basketball courts, picnic facilities, playground, a 6.2-mile running trail with seven exercise stations, nature trails, and two shelters.

South Frankfort Park has a concrete volleyball court, a playground, two basketball courts, picnic facilities and shelter.

In addition to the city park system, The State Department for Fish and Wildlife maintains a Game Farm in Frankfort. Visitors to the Game Farm can enjoy viewing many native Kentucky animals. A fishing lake and picnic area are also available. An auditorium/theatre is presently under construction at the facility.

Construction of a new county park (Lakeview Park) was recently completed. Facilities at the 133-acre park include five softball fields, seven soccer fields, two driving ranges (one indoor and one outdoor), four-mile walking/jogging track, horse-show arena, amphitheatre, two volleyball courts, four croquet courts, two pavilions, two barns, community center, and picnic areas. Construction of a nine-hole golf course is under way and is expected to be completed in the summer of 1995.

The Frankfort YMCA offers numerous programs for children and adults. The facility houses a swimming pool, racquetball courts, a handball court, weight lifting equipment, and fitness center. A successful soccer program is also administered by the YMCA. An expansion project is currently under way which will allow for expanded facilities.

Elkhorn Creek, located in the eastern part of Franklin County, provides an excellent area for kayaking and canoeing enthusiasts.

There are vast cultural opportunities available in Frankfort. In addition to the many museums and historic homes to visit, two art galleries are located in Frankfort. The community benefits from two theatre groups and cultural events sponsored by the Frankfort Arts Foundation.

Area (Within 50 miles)

Churchill Downs
Constitution Square State Historic Site
E.P. "Tom" Sawyer State Park
Headley-Whitney Museum
Herrington Lake
Keeneland Race Track
Kentucky Horse Park
Kentucky Kingdom (amusement park)
Lincoln Homestead State Park
Old Fort Harrod State Park
Perryville Battlefield State Historic Site
Red Mile Harness Track
Shaker Village of Pleasant Hill
Taylorsville Lake State Park
Waveland State Historic Site
White Hall State Historic Site

Kentucky

Cabinet For Economic Development

2300 Capital Plaza Tower, 500 Mero Street, Frankfort, KY 40601, 502 • 564 • 7140



Printed on recycled paper.